

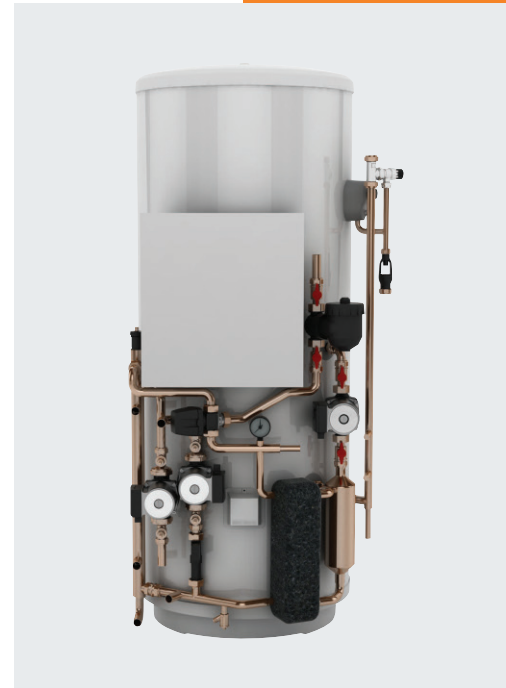
# Heating

## Product Information

**EHPT21-30X-UKHSCW**  
FTC5 Pre-plumbed Solar Cylinders  
for Ecodan Monobloc Units

Making a  
World of  
Difference

ecodan



The pre-plumbed solar cylinder comes complete with integrated hydraulic components and advanced controls.

Designed to integrate with the Ecodan monobloc air source heat pump range, the solar cylinder provides improved performance and faster heat up times through the use of plate heat exchanger technology. Fast commissioning via an SD card and energy monitoring functions are now included.

### Key Features

- Optional 2-zone energy efficient space heating control
- Pre-plumbed and wired for faster installation
- Hybrid function, for use with conventional boilers
- Energy monitoring as standard



Cooling | Heating | Ventilation | Controls



**ecodan**<sup>®</sup>  
Renewable Heating Technology

#### ADVANCED CONTROLLER – WITH ENERGY MONITORING

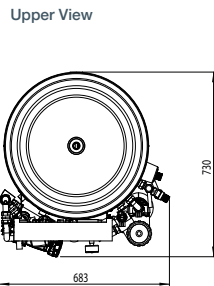
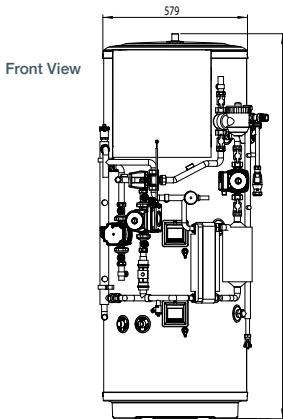


Mitsubishi Electric's fifth generation controller (FTC5) includes intelligent room temperature control as standard. This together with advanced weather compensation ensures the system delivers efficient, comfortable heating regardless of the season. FTC5 now also includes energy monitoring showing consumed and produced energy.

CYLINDER		EHPT21X-UKHSCW	EHPT25X-UKHSCW	EHPT30X-UKHSCW
NOMINAL HOT WATER VOLUME (LITRES)		210	250	300
ERP RATING		C	C	C
HEAT LOSS (kWh/24hrs)		1.56	1.63	1.84
HEAT LOSS (W)		65	68	77
WATER		Flow Rate (l/min) W50 - W85 - W112 - HW140		
		14.3 - 25.8 - 32.1 - 40.1		
		Primary Pump Grundfos UPMGEO 25 - 85		
		Secondary Circuit Pump Grundfos UPM3 25-70		
		Sanitary Hot Water Pump Grundfos UPSO 15-60 CIL2		
		Connection Size (mm) Heating / DHW (mm)		
		22		
		Primary Expansion Vessel (Litres)		
		18		
		Charge Pressure (MPa (Bar))		
		0.35 (3.5)		
WATER SAFETY DEVICES		Control Thermostat (°C)		
		1 - 80		
		Pressure Relief Valve (MPa (Bar))		
		0.3 (3)		
		Expansion Relief Valve (Cold)		
		0.8 (8)		
		Control Thermostat		
		40-70		
		High Limit Stat (°C)		
		Mechanical 80 (+/-5)		
		Temp and Pressure Relief Valve (°C) / (MPa (Bar))		
		90 / 1.0 (10)		
DIMENSIONS (mm)		Width		
		683		
		Depth		
		730		
		Height		
		1513		
WEIGHT EMPTY / FULL (kg)		74 / 284		
		82 / 332		
		92 / 392		
CYLINDER MATERIAL		Stainless Steel		
Cylinder Insulation		CFC / HCFC-free flame-retardant expanded Polyurethane		
		Insulation Type		
		60		
		Insulation Thickness (mm)		
		3.1		
		GWP of Insulation		
		0		
		ODP of Insulation		
		0		
ELECTRICAL DATA		Control Board		
		Electrical Supply		
		220-240v, 50Hz		
		Phase		
		Single		
		Fuse Rating - MCB Sizes (A) <sup>1</sup>		
		10		
		Immersion Heater		
		Electrical Supply		
		220-240v, 50Hz		
		Phase		
		Single		
		Capacity (kW)		
		3		
		Max Running Current (A)		
		13		
		Fuse Rating - MCB Sizes (A) <sup>1</sup>		
		16		
MECHANICAL ZONES		DHW and 1 Heating Zone <sup>2</sup>		
OPTIONAL SIMPLIFIED WIRELESS ROOM THERMOSTAT AND WIRELESS RECEIVER		PAR-WT50-E Controller and PAR-WR61-E Receiver		

Cylinder includes: Flow Temperature Controller (FTC5) with Main Controller and Temperature Sensors, Magnetic & Cyclonic Filter, Pumps & Valves for Zone 1 and DHW use, Flow Sensor, Plate Heat Exchanger, Scale Trap, 3kW Immersion Heater and Expansion Vessel.  
<sup>1</sup> MCB Sizes BS EN60898-2 & BS EN60947-2 <sup>2</sup> Optional 2 zone accessory pack available

#### DIMENSIONS



Model	Overall Height (A)
EHPT21X-UKHSCW	1513
EHPT25X-UKHSCW	1765
EHPT30X-UKHSCW	2081

\*All dimensions in mm



Telephone: 01707 282880  
 email: heating@meuk.mee.com  
 web: les.mitsubishielectric.co.uk

UNITED KINGDOM Mitsubishi Electric Europe Living Environment Systems Division  
 Travellers Lane, Hatfield, Hertfordshire, AL10 8XB, England General Enquiries Telephone: 01707 282880 Fax: 01707 278881

IRELAND Mitsubishi Electric Europe Westgate Business Park, Ballymount, Dublin 24, Ireland  
 Telephone: Dublin (01) 419 8800 Fax: Dublin (01) 419 8890 International code: (003531)

Country of origin: United Kingdom – Japan – Thailand – Malaysia. ©Mitsubishi Electric Europe 2018. Mitsubishi and Mitsubishi Electric are trademarks of Mitsubishi Electric Europe B.V. The company reserves the right to make any variation in technical specification to the equipment described, or to withdraw or replace products without prior notification or public announcement. Mitsubishi Electric is constantly developing and improving its products. All descriptions, illustrations, drawings and specifications in this publication present only general particulars and shall not form part of any contract. All goods are supplied subject to the Company's General Conditions of Sale, a copy of which is available on request. Third-party product and brand names may be trademarks or registered trademarks of their respective owners.

Note: The fuse rating is for guidance only. Please refer to the relevant databook for detailed specification. It is the responsibility of a qualified electrician/electrical engineer to select the correct cable size and fuse rating based on current regulation and site specific conditions. Mitsubishi Electric's air conditioning equipment and heat pump systems contain a fluorinated greenhouse gas, R410A (GWP:2088), R32 (GWP:675), R407C (GWP:1774) or R134a (GWP:1430). \*These GWP values are based on Regulation (EU) No 517/2014 from IPCC 4th edition. In case of Regulation (EU) No.626/2011 from IPCC 3rd edition, these are as follows: R410A (GWP:1975), R32 (GWP: 550), R407C (GWP:1650) or R134a (GWP:1300).



www.greengateway.mitsubishielectric.co.uk  
 Mitsubishi Electric UK's commitment to the environment

Follow us @meuk\_Jes  
 Follow us @green\_gateway

Mitsubishi Electric  
 Living Environmental Systems UK

mitsubishielectric2

thehub.mitsubishielectric.co.uk

Effective as of June 2018