

SERVICE PARTS LIST FOR MITSUBISHI ELECTRIC REFRIGERATION SYSTEMS:CHILLING UNIT

Series : EACV-P·YA(-N)(-BS)
EAHV-P·YA(-N)(-BS)
EAHV-P·YA-H(-N)(-BS)

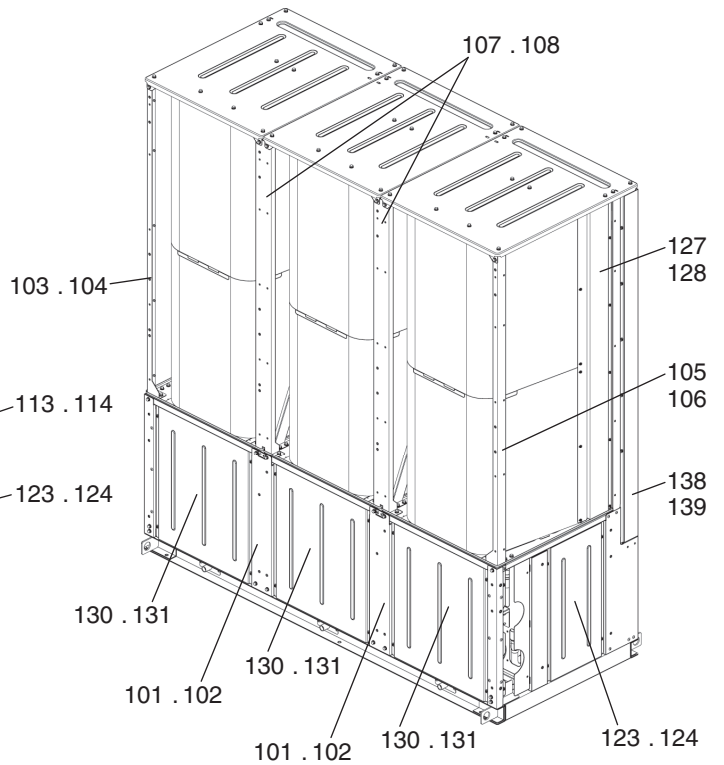
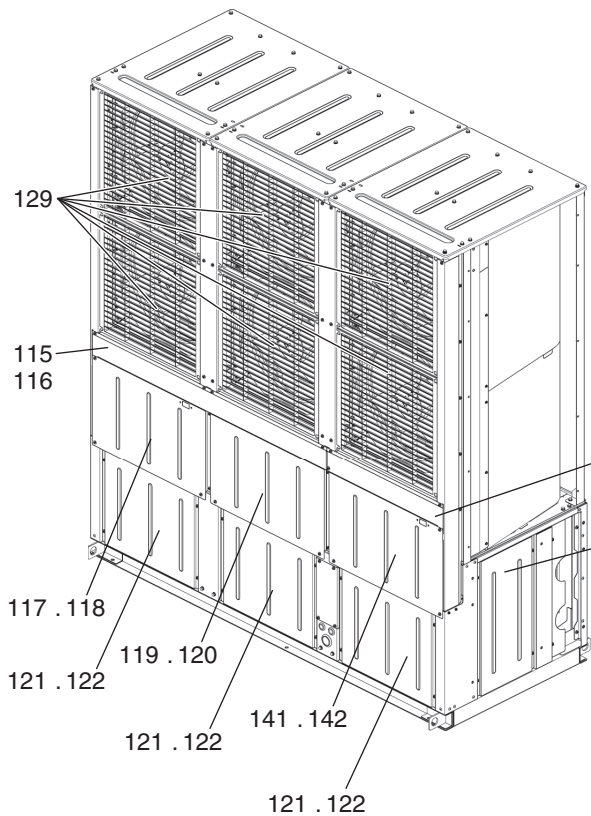
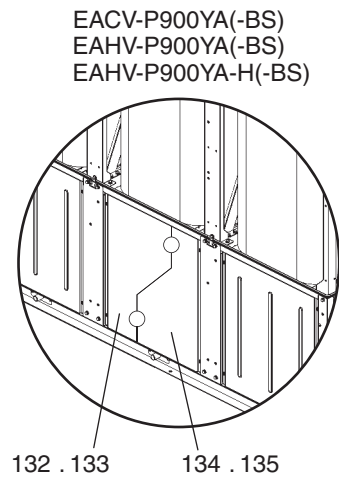
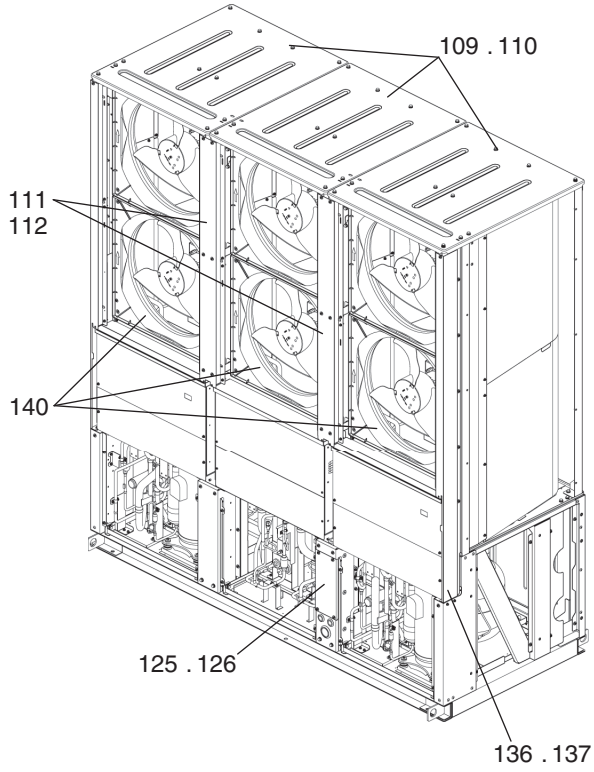
June 2015

BWE015160

INDEX
EACV-P900YA
EACV-P900YA-BS
EACV-P900YA-N
EACV-P900YA-N-BS
EAHV-P900YA
EAHV-P900YA-BS
EAHV-P900YA-N
EAHV-P900YA-N-BS
EAHV-P900YA-H
EAHV-P900YA-H-BS
EAHV-P900YA-H-N
EAHV-P900YA-H-N-BS

EACV-P900YA(-N)(-BS)
 EAHV-P900YA(-N)(-BS)
 EAHV-P900YA-H(-N)(-BS)

EXTERNAL PARTS



EACV-P900YA(-N)(-BS)
 EAHV-P900YA(-N)(-BS)
 EAHV-P900YA-H(-N)(-BS)

EXTERNAL PARTS

No.	Part No.	G : RoHS Apply Only W : RoHS Apply by Running Change		Spec.	EACV-P900YA	EACV-P900YA-BS	EACV-P900YA-N	EACV-P900YA-N-BS	EAHV-P900YA	EAHV-P900YA-BS	Dwg. No.	Notes for the models	Revision info.
		Part Name											
101	R15 001 626	G	Pillar MR		2		2		2		KC02L390G01		
102	R15 006 626	G	Pillar MR			2		2		2	KC02L390G03		
103	R15 002 626	G	Pillar R	For blower room	1		1		1		KC02B746G01		
104	R15 008 626	G	Pillar R	For blower room			1		1		KC02B746G05		
105	R15 003 626	G	Pillar R	For blower room	1		1		1		KC02B746G02		
106	R15 010 626	G	Pillar R	For blower room			1		1		KC02B746G06		
107	R15 004 626	G	Pillar assy R	For blower room	2		2		2		KC02L556G01		
108	R15 012 626	G	Pillar assy R	For blower room		2		2		2	KC02L556G03		
109	R15 001 661	G	Panel assy T		3		3		3		KC00B789G01		
110	R15 013 661	G	Panel assy T			3		3		3	KC00B789G03		
111	R15 004 661	G	Panel M	For blower room	2		2		2		KC02L560G01		
112	R15 019 661	G	Panel M	For blower room		2		2		2	KC02L560G03		
113	R15 063 661	G	Decorative panel SR		1		1		1		KC00R548G01		
114	R15 064 661	G	Decorative panel SR			1		1		1	KC00R548G02		
115	R15 065 661	G	Decorative panel SL		1		1		1		KC00R549G01		
116	R15 066 661	G	Decorative panel SL			1		1		1	KC00R549G02		
117	R15 067 661	G	Panel SL	For blower room	1		1		1		KC02T060G01		
118	R15 068 661	G	Panel SL	For blower room			1		1		KC02T060G02		
119	R15 006 661	G	Panel M	For blower room	1		1		1		KC02L565G01		
120	R15 041 661	G	Panel M	For blower room			1		1		KC02L565G03		
121	R15 007 661	G	Panel F	For machine room	3		3		3		KC86L628G01		
122	R15 024 661	G	Panel F	For machine room		3		3		3	KC86L628G03		
123	R15 008 661	G	Panel S 1	For machine room	2		2		2		KC02L312H01		
124	R15 026 661	G	Panel S 1	For machine room		2		2		2	KC02L312H03		
125	R15 001 011	G	Wiring window cover		1		1		1		KC02K498H01		
126	R15 003 011	G	Wiring window cover			1		1		1	KC02K498H03		
127	R15 008 310	G	Pillar cover SL		1		1		1		KC02J187G01		
128	R15 009 310	G	Pillar cover SL				1		1		KC02J187G02		
129	R15 001 016	G	Air guide		6	6	6	6	6	6	KC25B713H01		
130	R15 009 661	G	Rear panel		2		3		2		KC86L629G01		
131	R15 028 661	G	Rear panel			2		3		2	KC86L629G03		
132	R15 010 661	G	Rear panel		1				1		KC02L680H01		
133	R15 043 661	G	Rear panel			1				1	KC02L680H03		
134	R15 011 661	G	Rear panel		1				1		KC02L681G01		
135	R15 045 661	G	Rear panel			1				1	KC02L681G03		
136	R15 069 661	G	Panel S	For blower room	1		1		1		KC02J294G01		
137	R15 070 661	G	Panel S	For blower room			1		1		KC02J294G03		
138	R15 071 661	G	Panel S	For blower room	1		1		1		KC02J294G02		
139	R15 072 661	G	Panel S	For blower room			1		1		KC02J294G04		
140	R15 002 118	G	Bell mouth		6	6	6	6	6	6	KC25J046H01		
141	R15 073 661	G	Panel SR	For blower room	1		1		1		KC02T059G01		
142	R15 074 661	G	Panel SR	For blower room			1		1		KC02T059G02		

EACV-P900YA(-N)(-BS)
 EAHV-P900YA(-N)(-BS)
 EAHV-P900YA-H(-N)(-BS)

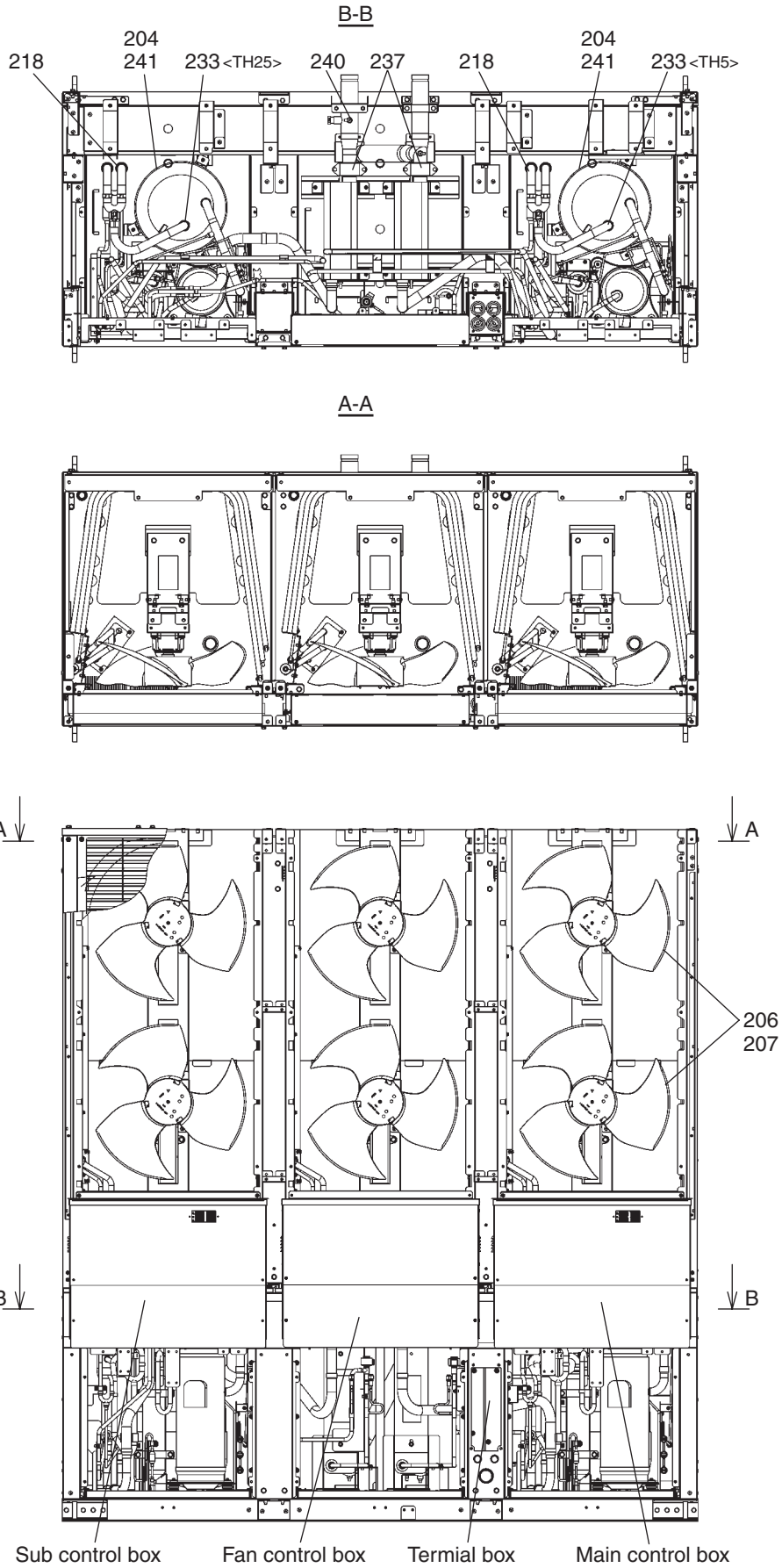
EXTERNAL PARTS

No.	Part No.	G : RoHS Apply Only W : RoHS Apply by Running Change		Spec.	EAHV-P900YA-N	EAHV-P900YA-N-BS	EAHV-P900YA-H	EAHV-P900YA-H-BS	EAHV-P900YA-H-N	EAHV-P900YA-H-NBS	Dwg. No.	Notes for the models	Revision info.
		Part Name											
101	R15 001 626	G	Pillar MR		2		2		2		KC02L390G01		
102	R15 006 626	G	Pillar MR			2		2		2	KC02L390G03		
103	R15 002 626	G	Pillar R	For blower room	1		1		1		KC02B746G01		
104	R15 008 626	G	Pillar R	For blower room			1		1		KC02B746G05		
105	R15 003 626	G	Pillar R	For blower room	1		1		1		KC02B746G02		
106	R15 010 626	G	Pillar R	For blower room			1		1		KC02B746G06		
107	R15 004 626	G	Pillar assy R	For blower room	2		2		2		KC02L556G01		
108	R15 012 626	G	Pillar assy R	For blower room		2		2		2	KC02L556G03		
109	R15 001 661	G	Panel assy T		3		3		3		KC00B789G01		
110	R15 013 661	G	Panel assy T			3		3		3	KC00B789G03		
111	R15 004 661	G	Panel M	For blower room	2		2		2		KC02L560G01		
112	R15 019 661	G	Panel M	For blower room		2		2		2	KC02L560G03		
113	R15 063 661	G	Decorative panel SR		1		1		1		KC00R548G01		
114	R15 064 661	G	Decorative panel SR			1		1		1	KC00R548G02		
115	R15 065 661	G	Decorative panel SL		1		1		1		KC00R549G01		
116	R15 066 661	G	Decorative panel SL			1		1		1	KC00R549G02		
117	R15 067 661	G	Panel SL	For blower room	1		1		1		KC02T060G01		
118	R15 068 661	G	Panel SL	For blower room			1		1		KC02T060G02		
119	R15 006 661	G	Panel M	For blower room	1		1		1		KC02L565G01		
120	R15 041 661	G	Panel M	For blower room			1		1		KC02L565G03		
121	R15 007 661	G	Panel F	For machine room	3		3		3		KC86L628G01		
122	R15 024 661	G	Panel F	For machine room		3		3		3	KC86L628G03		
123	R15 008 661	G	Panel S 1	For machine room	2		2		2		KC02L312H01		
124	R15 026 661	G	Panel S 1	For machine room		2		2		2	KC02L312H03		
125	R15 001 011	G	Wiring window cover		1		1		1		KC02K498H01		
126	R15 003 011	G	Wiring window cover			1		1		1	KC02K498H03		
127	R15 008 310	G	Pillar cover SL		1		1		1		KC02J187G01		
128	R15 009 310	G	Pillar cover SL				1		1		KC02J187G02		
129	R15 001 016	G	Air guide		6	6	6	6	6	6	KC25B713H01		
130	R15 009 661	G	Rear panel		3		2		3		KC86L629G01		
131	R15 028 661	G	Rear panel			3		2		3	KC86L629G03		
132	R15 010 661	G	Rear panel				1				KC02L680H01		
133	R15 043 661	G	Rear panel					1			KC02L680H03		
134	R15 011 661	G	Rear panel				1				KC02L681G01		
135	R15 045 661	G	Rear panel					1			KC02L681G03		
136	R15 069 661	G	Panel S	For blower room	1		1		1		KC02J294G01		
137	R15 070 661	G	Panel S	For blower room			1		1		KC02J294G03		
138	R15 071 661	G	Panel S	For blower room	1		1		1		KC02J294G02		
139	R15 072 661	G	Panel S	For blower room			1		1		KC02J294G04		
140	R15 002 118	G	Bell mouth		6	6	6	6	6	6	KC25J046H01		
141	R15 073 661	G	Panel SR	For blower room	1		1		1		KC02T059G01		
142	R15 074 661	G	Panel SR	For blower room			1		1		KC02T059G02		

EACV-P900YA(-N)(-BS)
 EAHV-P900YA(-N)(-BS)
 EAHV-P900YA-H(-N)(-BS)

FUNCTIONAL PARTS

EACV-P900YA(-BS)

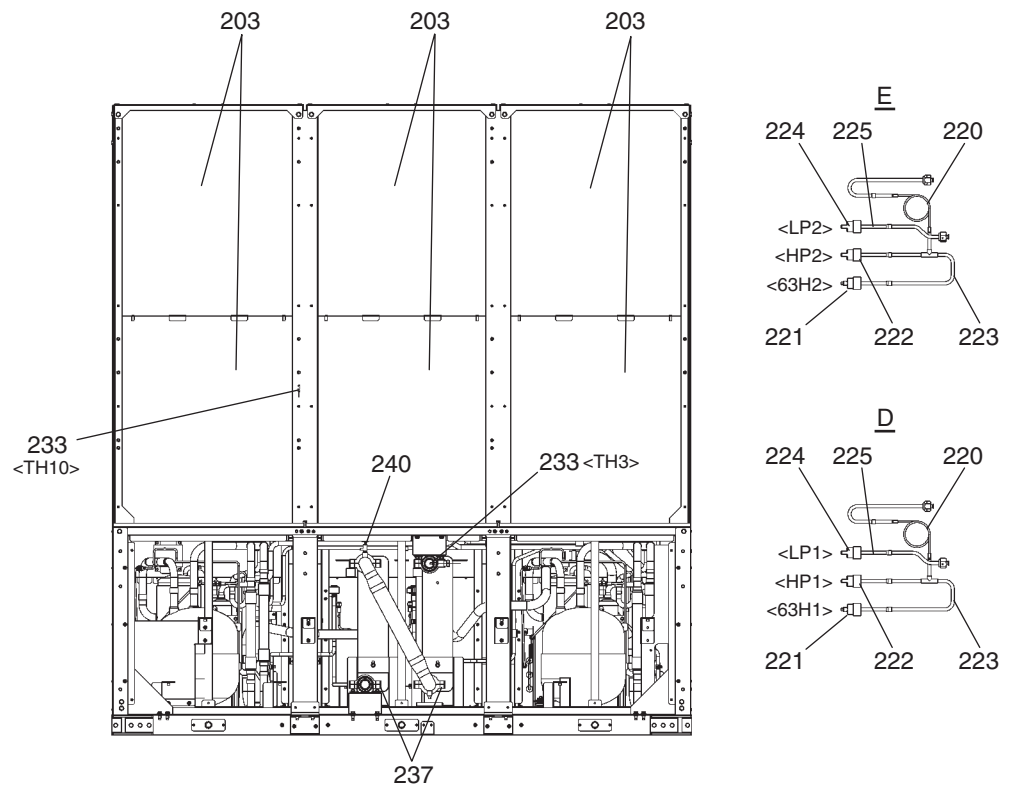
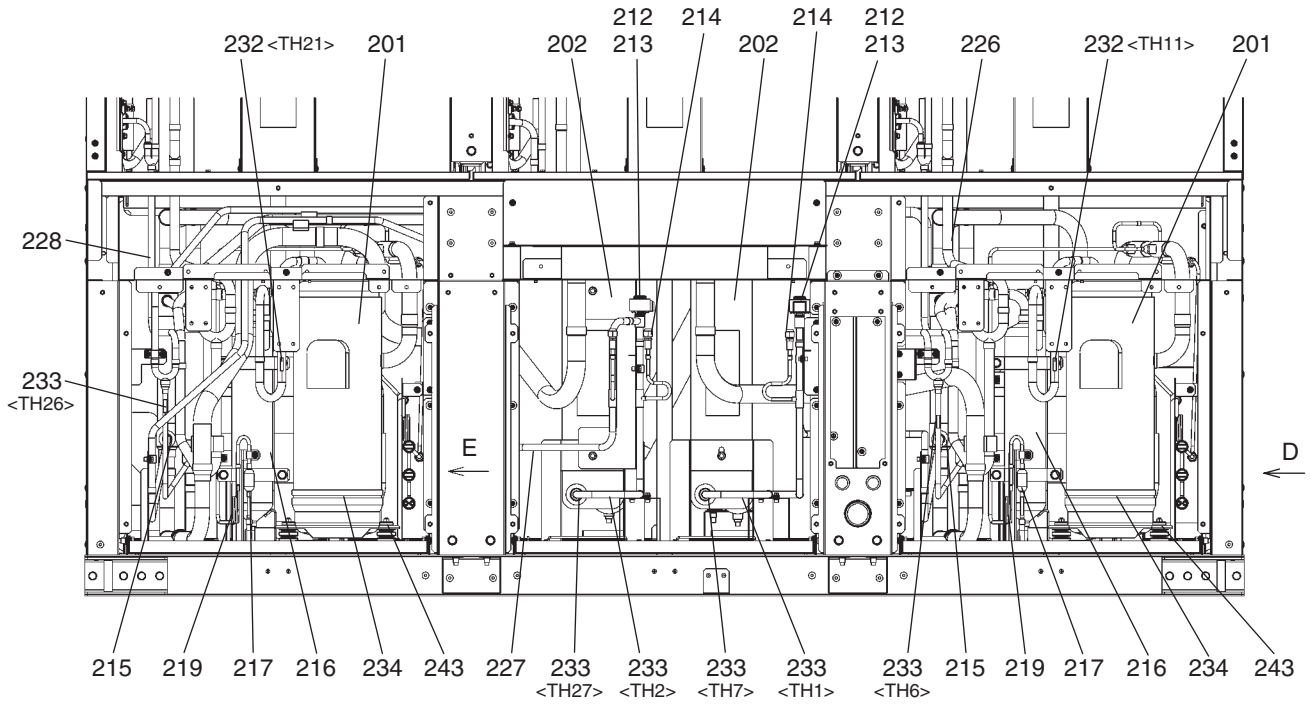


EACV-P900YA(-N)(-BS)
 EAHV-P900YA(-N)(-BS)
 EAHV-P900YA-H(-N)(-BS)

FUNCTIONAL PARTS

EACV-P900YA(-BS)

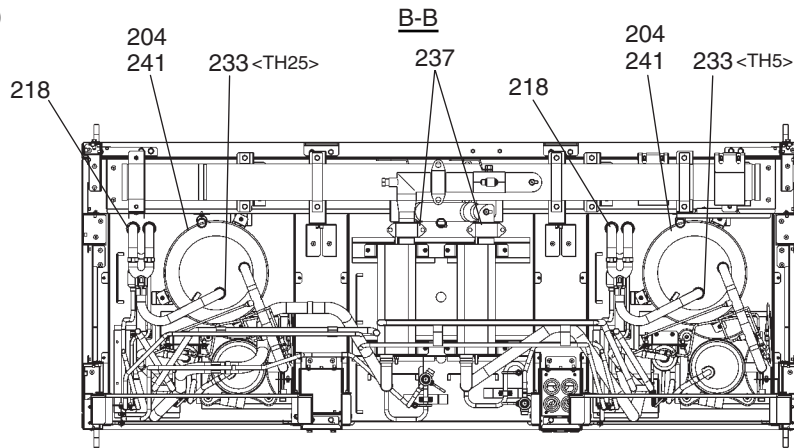
Machine room details



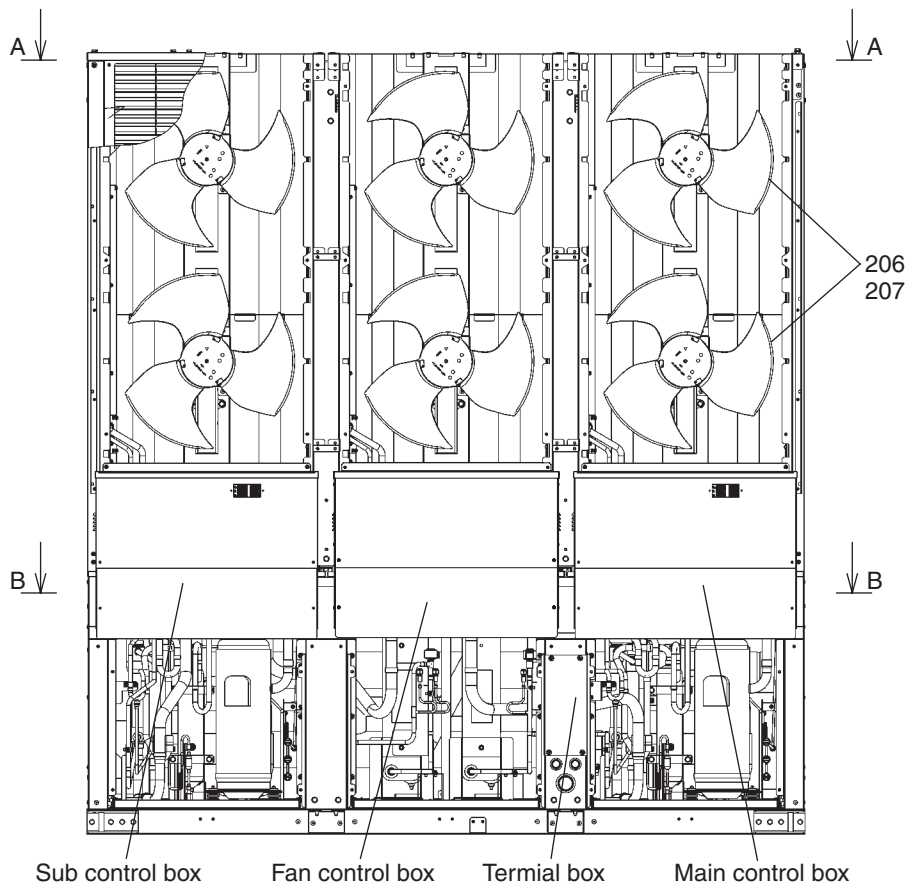
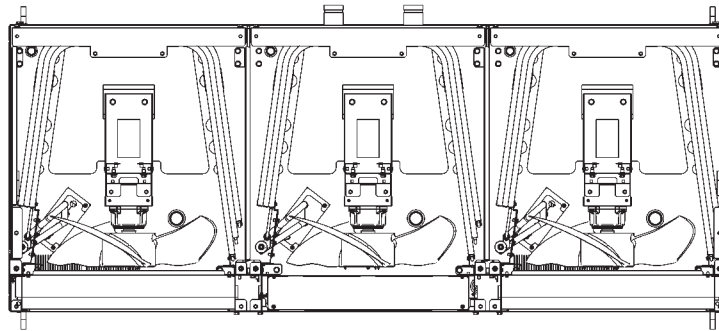
EACV-P900YA(-N)(-BS)
 EAHV-P900YA(-N)(-BS)
 EAHV-P900YA-H(-N)(-BS)

FUNCTIONAL PARTS

EACV-P900YA-N(-BS)



A-A

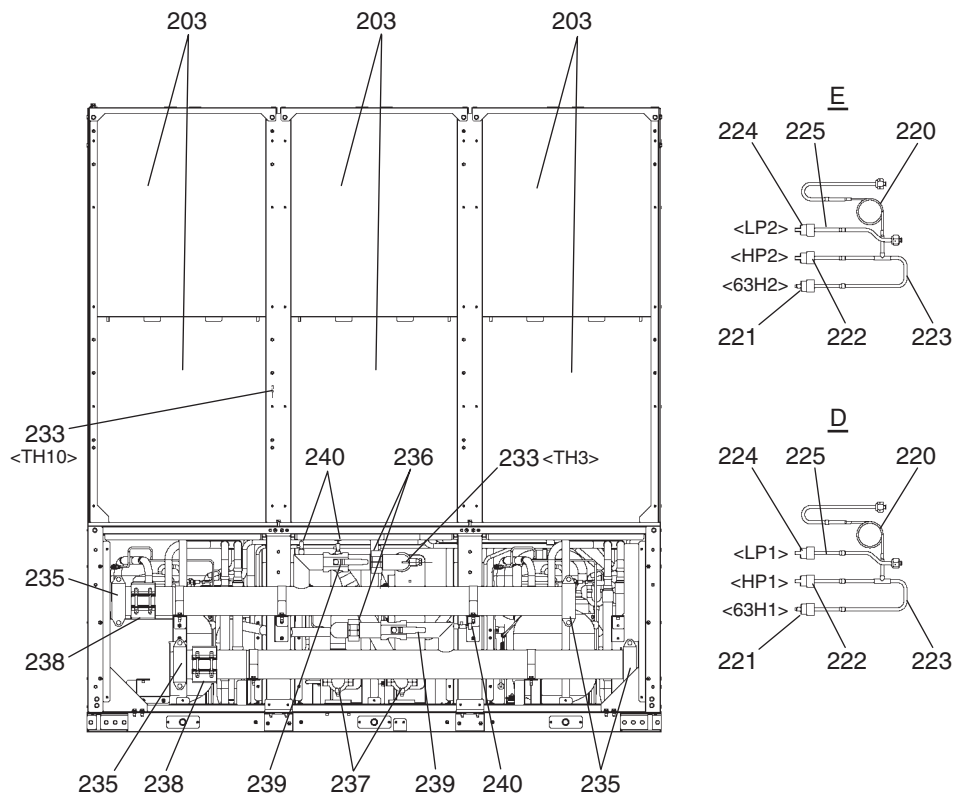
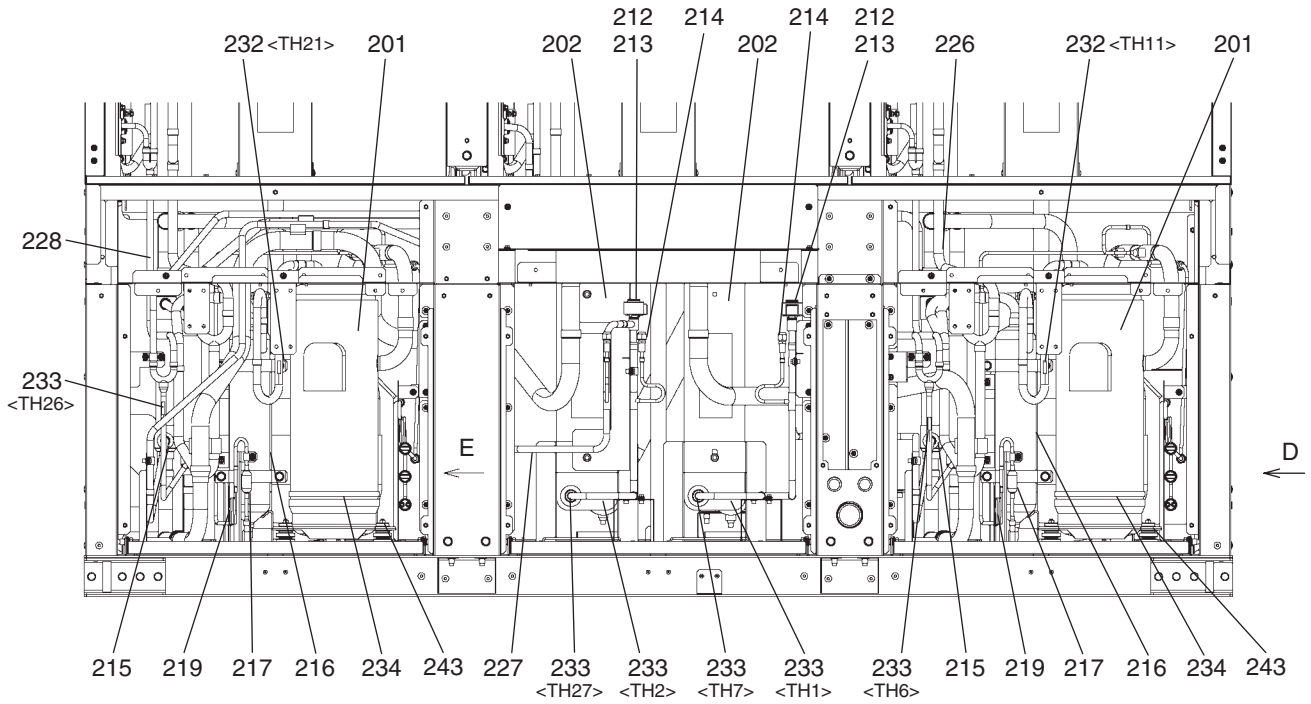


EACV-P900YA(-N)(-BS)
 EAHV-P900YA(-N)(-BS)
 EAHV-P900YA-H(-N)(-BS)

FUNCTIONAL PARTS

EACV-P900YA-N(-BS)

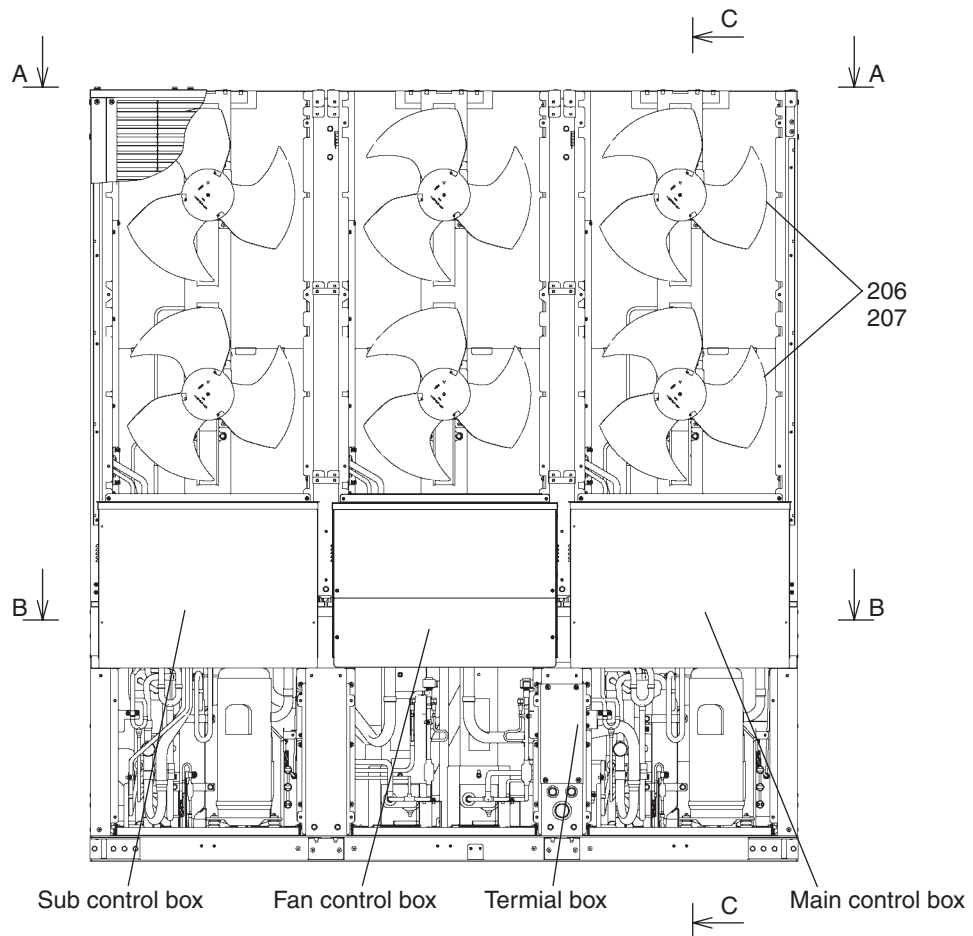
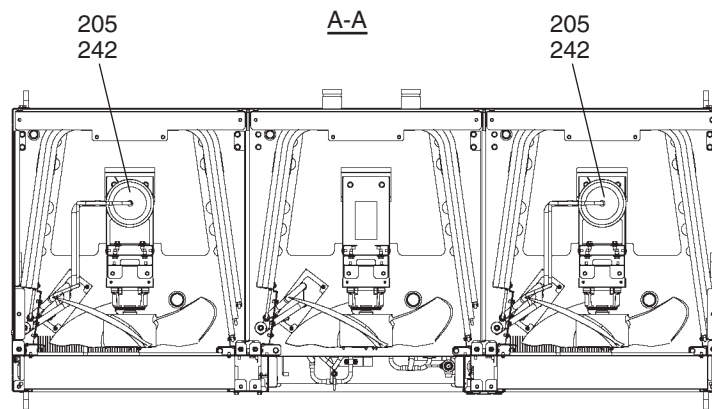
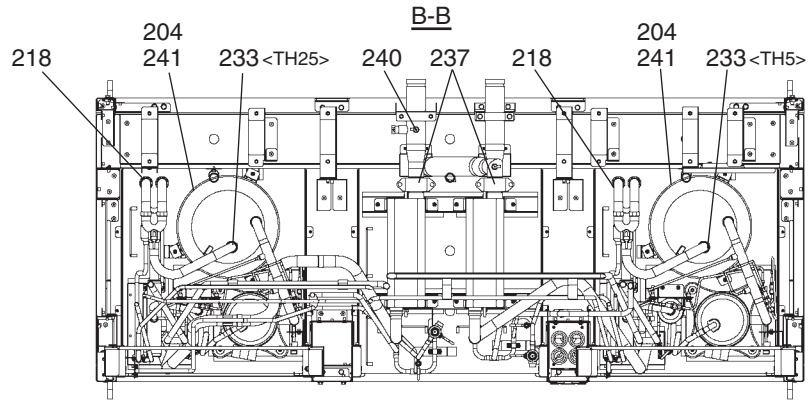
Machine room details



EACV-P900YA(-N)(-BS)
 EAHV-P900YA(-N)(-BS)
 EAHV-P900YA-H(-N)(-BS)

FUNCTIONAL PARTS

EAHV-P900YA(-H)(-BS)

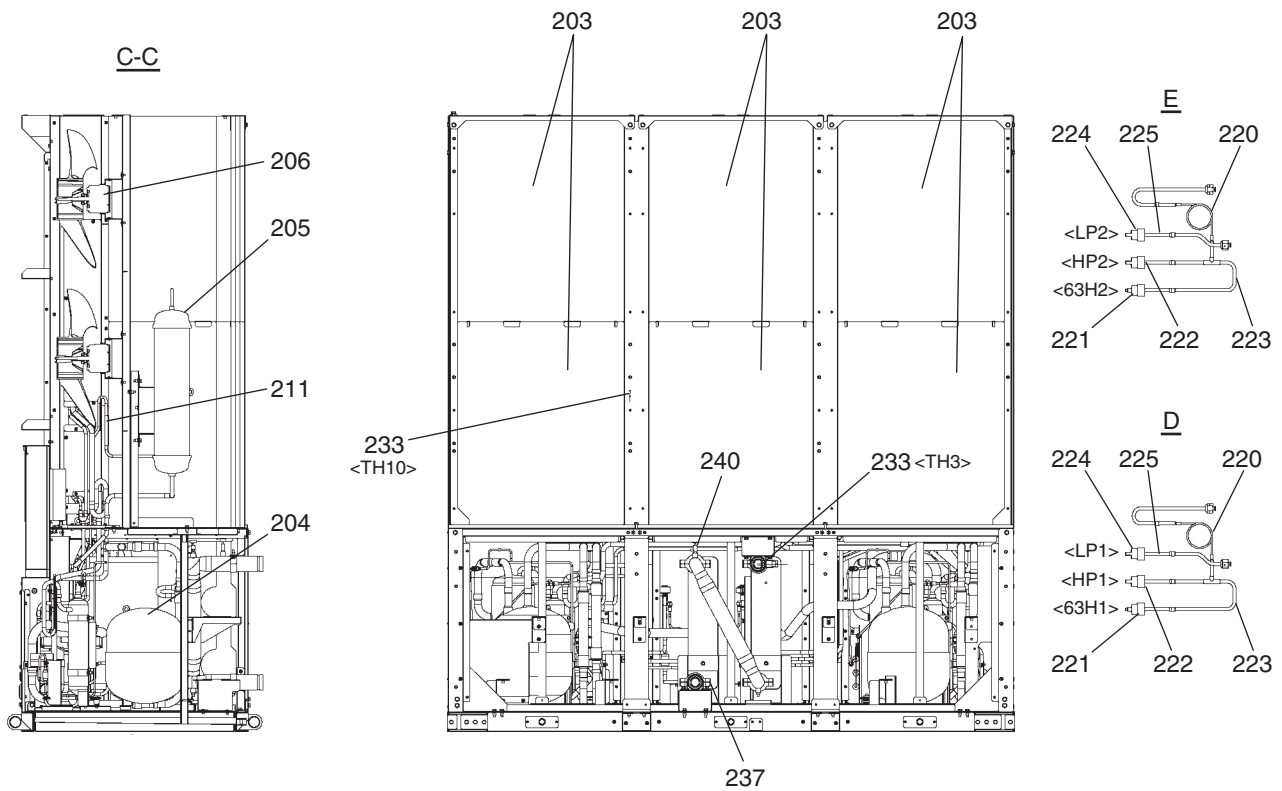
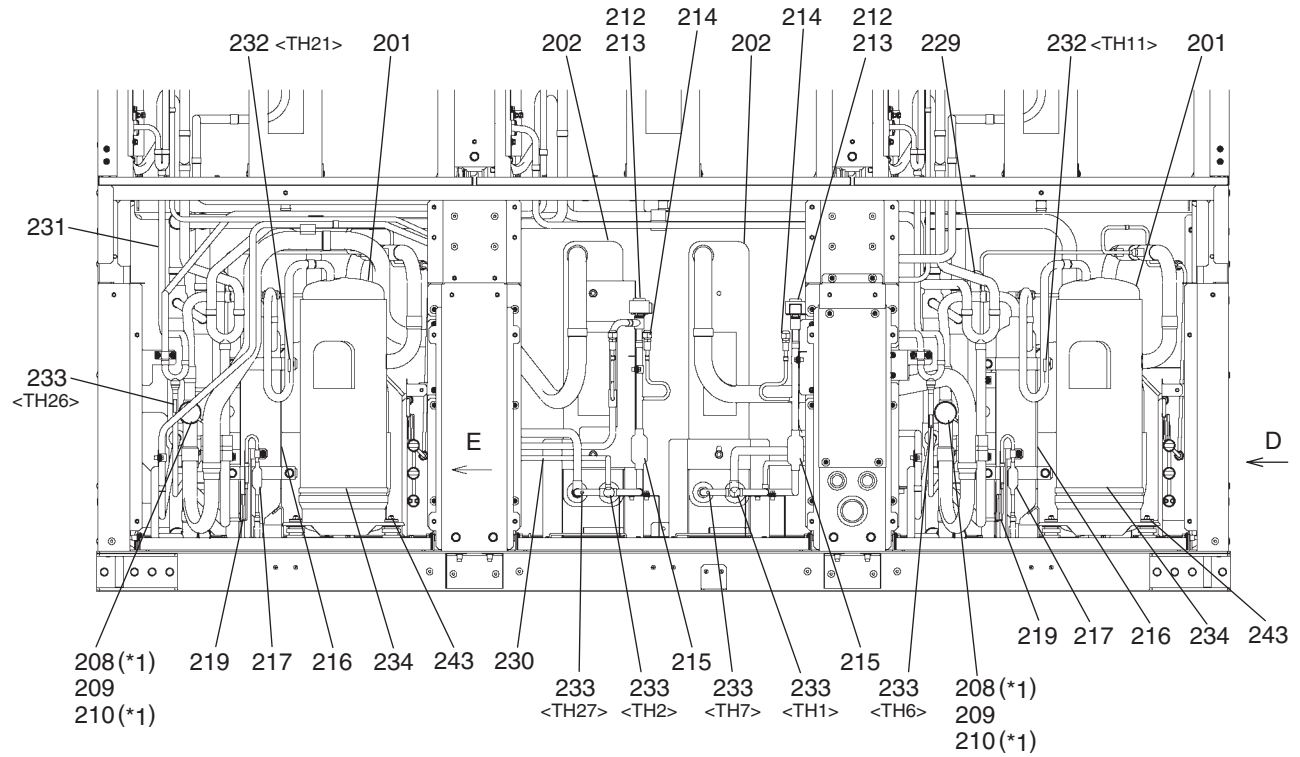


EACV-P900YA(-N)(-BS)
 EAHV-P900YA(-N)(-BS)
 EAHV-P900YA-H(-N)(-BS)

FUNCTIONAL PARTS

EAHV-P900YA(-H)(-BS)

Machine room details

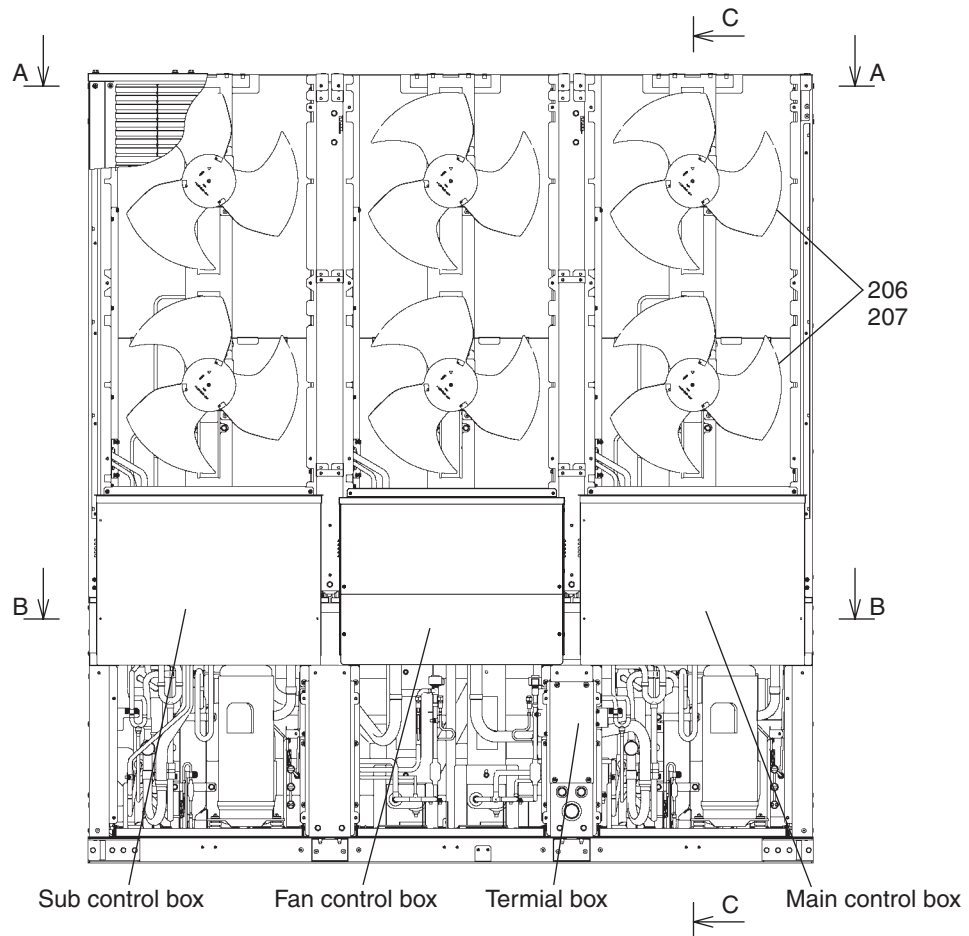
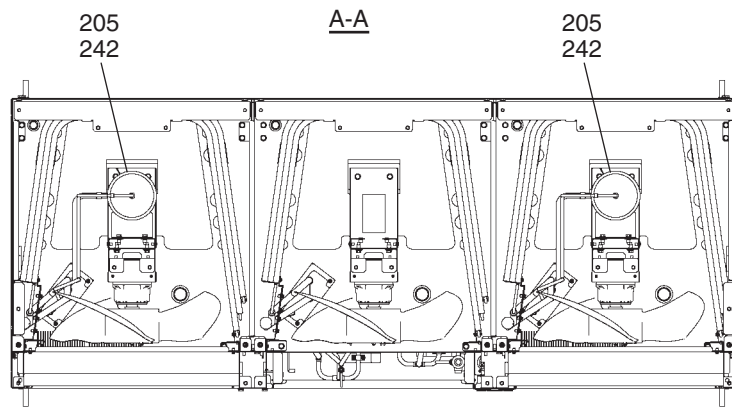
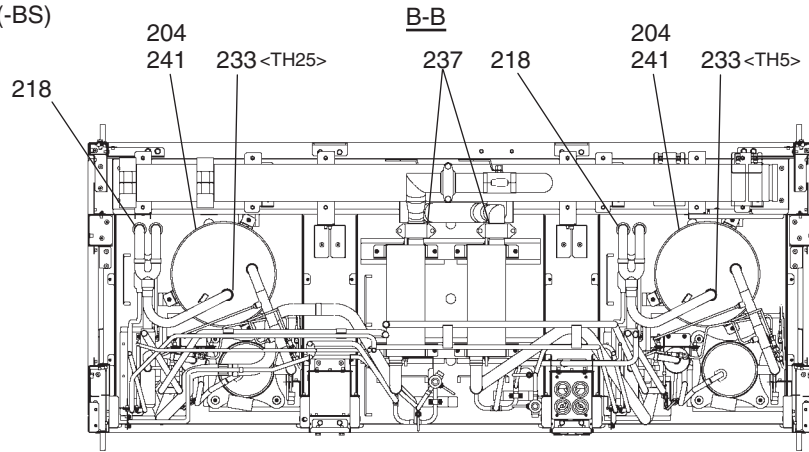


*1 Please use 210 , 211 the four way valve assembly if the piping processing of 208 four way valve is difficult at the local.

EACV-P900YA(-N)(-BS)
 EAHV-P900YA(-N)(-BS)
 EAHV-P900YA-H(-N)(-BS)

FUNCTIONAL PARTS

EAHV-P900YA(-H)-N(-BS)

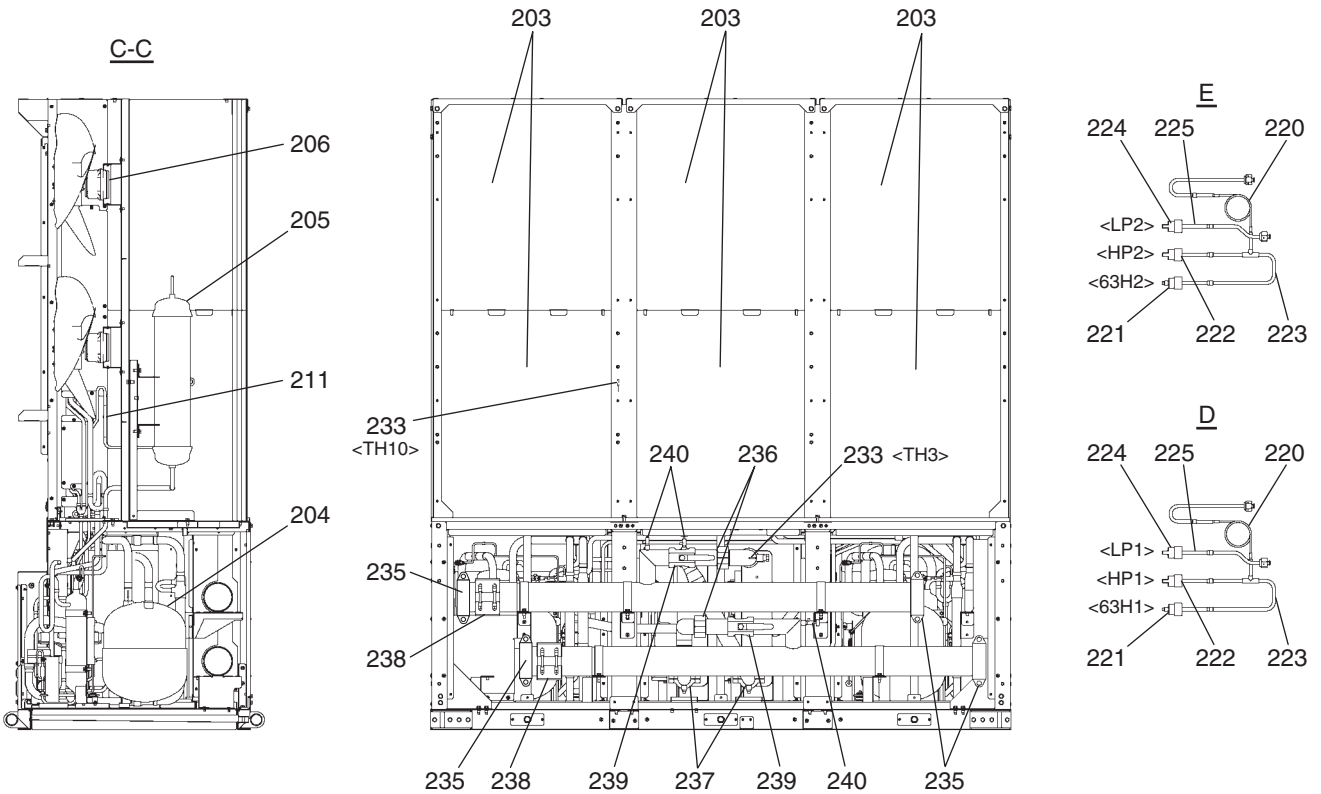
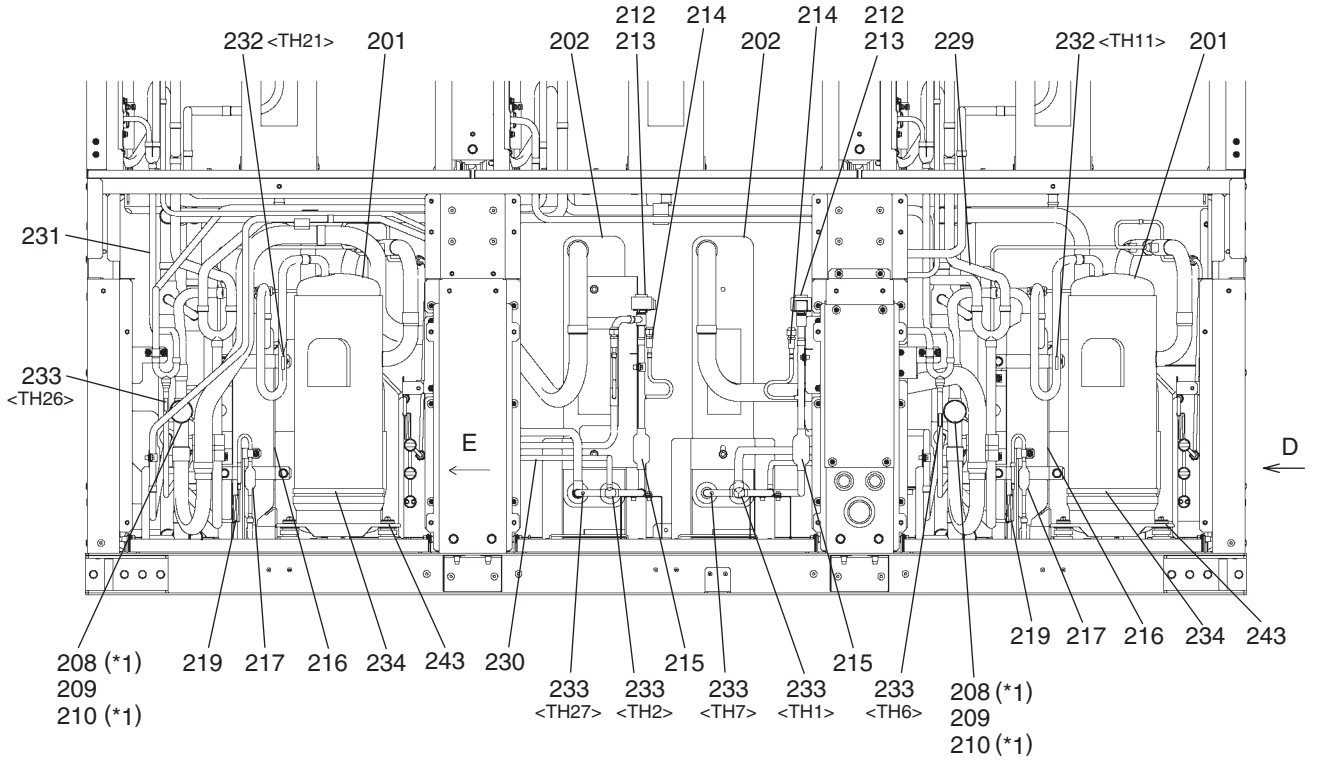


EACV-P900YA(-N)(-BS)
 EAHV-P900YA(-N)(-BS)
 EAHV-P900YA-H(-N)(-BS)

FUNCTIONAL PARTS

EAHV-P900YA(-H)-N(-BS)

Machine room details



*1 Please use 210 , 211 the four way valve assembly if the piping processing of 208 four way valve is difficult at the local.

EACV-P900YA(-N)(-BS)
 EAHV-P900YA(-N)(-BS)
 EAHV-P900YA-H(-N)(-BS)

FUNCTIONAL PARTS

No.	Part No.	G : RoHS Apply Only W : RoHS Apply by Running Change		Spec.	EACV-P900YA	EACV-P900YA-BS	EACV-P900YA-N	EACV-P900YA-N-BS	EAHV-P900YA	EAHV-P900YA-BS	Dwg. No.	Notes for the models	Revision info.
		Part Name											
201	R15 003 478	G		Scroll compressor	HNB83FA-YN	2	2	2	2	2	2	EP10136B07	
202	R63 001 105	G		Water side HEX assy	System1,2 Piping fixed	2	2	2	2	2	2	KC00L846G03	
203	R15 002 105	G		Heat exchanger		6	6	6	6	6	6	KC00K718G01	
204	R61 079 484	G		Accumulator		2			2			KB54B375G13	
205	R15 009 110	G		Tank assy	8.1L					2		KC54B665G05	
206	R15 003 941	G		Fan motor	400V	6	6	6	6	6	6	KC78R908G01	
207	R15 001 942	G		Fan	ø550	6	6	6	6	6	6	KC25B796H01	
208	R15 001 150	G		Four way valve	System1,2 STF-2011G					2	2	KC50L635H01	*1
209	R63 Y16 243	G		Solenoid coil						2	2	P472024X01	
210	R63 002 150	G		Four way valve assy	Piping fixed					2	2	KC00B870G01	*1
211	R63 983 904	G		Check valve	System1,2 BCV-603DY					2	2	P639065X01	
212	R63 045 401	G		Expansion valve	System1,2 PAM-10T	2	2	2	2	2	2	P632540X01	<LEV11,21>
213	R15 001 920	G		Solenoid coil	System1,2	2	2	2	2	2	2	KC50K787H01	<LEV11,21>
214	R15 001 904	G		Check joint		2	2	2	2	2	2	P666005X02	
215	R61 009 454	G		Strainer		2	2	2	2	4	4	W882826G02	
216	R15 001 486	G		Oil separator assy	System1,2	2	2	2	2	2	2	KC14B653G01	
217	R11 013 907	G		Oil separator strainer	System1,2	2	2	2	2	2	2	W882822G02	
218	R63 004 105	G		High and low HEX assy	System1,2 Piping fixed	2	2	2	2	2	2	KC00L883G01	
219	R15 001 980	G		Capillary		2	2	2	2	2	2	KC49K512G01	
220	R15 002 980	G		Capillary		2	2	2	2	2	2	KC49K513G02	
221	R15 001 935	G		High pressure switch	ACB-1UB129W	2	2	2	2	2	2	P426337X01	<63H1,2>
222	R15 001 936	G		High pressure sensor	NSK-BD042D	2	2	2	2	2	2	P426339X01	<HP1,2>
223	R15 002 935	G		Sensor, switch assy	Piping fixed	2	2	2	2	2	2	KC14L483G01	
224	R15 002 936	G		Low pressure sensor	NSK-BD017D	2	2	2	2	2	2	P426338X01	<LP1,2>
225	R15 003 936	G		Sensor assy	Piping fixed	2	2	2	2	2	2	KC14L484G02	
226	R15 001 675	G		Element pull piping kit	System1	1	1	1	1			KC00M056G02	
227	R15 002 675	G		Element pull piping kit	System2	1	1	1	1			KC00M057G02	
228	R15 003 675	G		Pull piping kit	Water side HEX	1	1	1	1			KC00M058G02	
229	R15 004 675	G		Element pull piping kit	System1					1	1	KC00M056G03	
230	R15 005 675	G		Element pull piping kit	System2					1	1	KC00M057G03	
231	R15 006 675	G		Pull piping kit	Water side HEX					1	1	KC00M058G03	
232	R63 911 202	G		Thermistor		2	2	2	2	2	2	P425416X02	<TH11,21> Discharge
233	R63 670 202	G		Thermistor	MDW103H	10	10	10	10	10	10	P425496X01	<TH1~3,5~7,10,25~27>
234	R63 Y07 237	G		Belt heater	240V 45W	2	2	2	2	2	2	P493781X02	Under shell
235	R15 001 040	G		Housing joint	100A G-0			4	4			KC16K752H01	
236	R15 002 040	G		Housing joint	50A G-0			2	2			KC16K751H01	
237	R15 003 040	G		Housing joint	40A G	4	4	4	4	4	4	KC16K750H01	
238	R15 004 040	G		Housing joint	100A			2	2			KC16L639H01	
239	R15 004 171	G		Ball valve	50A SUS			2	2			KC16K753H01	
240	R15 002 171	G		Air purge valve		2	2	3	3	2	2	KC11L644H01	
241	R61 080 484	G		Accumulator			2		2			KB54B375G14	
242	R15 010 110	G		Tank assy	8.1L						2	KC54B665G06	
243	R63 852 860	G		Rubber mount		8	8	8	8	8	8	W897574H01	

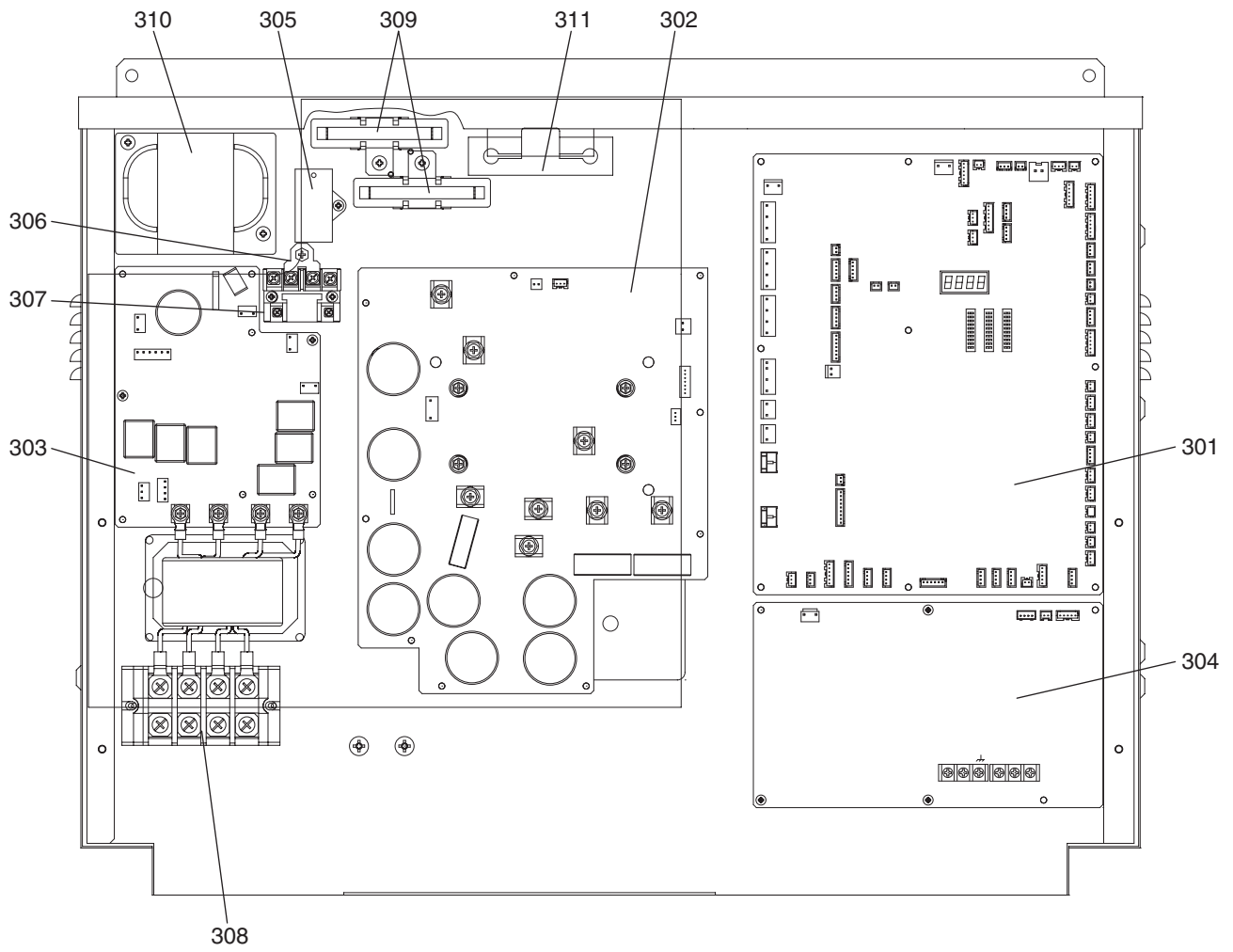
EACV-P900YA(-N)(-BS)
 EAHV-P900YA(-N)(-BS)
 EAHV-P900YA-H(-N)(-BS)

FUNCTIONAL PARTS

No.	Part No.	G : RoHS Apply Only W : RoHS Apply by Running Change		Spec.	EAHV-P900YA-N	EAHV-P900YA-N-BS	EAHV-P900YA-H	EAHV-P900YA-H-BS	EAHV-P900YA-H-N	EAHV-P900YA-H-BS	Dwg. No.	Notes for the models	Revision info.
		Part Name											
201	R15 003 478	G		Scroll compressor	HNB83FA-YN	2	2	2	2	2	2	EP10136B07	
202	R63 001 105	G		Water side HEX assy	System1,2 Piping fixed	2	2	2	2	2	2	KC00L846G03	
203	R15 002 105	G		Heat exchanger		6	6	6	6	6	6	KC00K718G01	
204	R61 079 484	G		Accumulator		2				2		KB54B375G13	
205	R15 009 110	G		Tank assy	8.1L	2				2		KC54B665G05	
206	R15 003 941	G		Fan motor	400V	6	6	6	6	6	6	KC78R908G01	
207	R15 001 942	G		Fan	ø550	6	6	6	6	6	6	KC25B796H01	
208	R15 001 150	G		Four way valve	System1,2 STF-2011G	2	2	2	2	2	2	KC50L635H01	*1
209	R63 Y16 243	G		Solenoid coil		2	2	2	2	2	2	P472024X01	
210	R63 002 150	G		Four way valve assy	Piping fixed	2	2	2	2	2	2	KC00B870G01	*1
211	R63 983 904	G		Check valve	System1,2 BCV-603DY	2	2	2	2	2	2	P639065X01	
212	R63 045 401	G		Expansion valve	System1,2 PAM-10T	2	2	2	2	2	2	P632540X01	<LEV11,21>
213	R15 001 920	G		Solenoid coil	System1,2	2	2	2	2	2	2	KC50K787H01	<LEV11,21>
214	R15 001 904	G		Check joint		2	2	2	2	2	2	P666005X02	
215	R61 009 454	G		Strainer		4	4	4	4	4	4	W882826G02	
216	R15 001 486	G		Oil separator assy	System1,2	2	2	2	2	2	2	KC14B653G01	
217	R11 013 907	G		Oil separator strainer	System1,2	2	2	2	2	2	2	W882822G02	
218	R63 004 105	G		High and low HEX assy	System1,2 Piping fixed	2	2	2	2	2	2	KC00L883G01	
219	R15 001 980	G		Capillary		2	2	2	2	2	2	KC49K512G01	
220	R15 002 980	G		Capillary		2	2	2	2	2	2	KC49K513G02	
221	R15 001 935	G		High pressure switch	ACB-1UB129W	2	2	2	2	2	2	P426337X01	<63H1,2>
222	R15 001 936	G		High pressure sensor	NSK-BD042D	2	2	2	2	2	2	P426339X01	<HP1,2>
223	R15 002 935	G		Sensor, switch assy	Piping fixed	2	2	2	2	2	2	KC14L483G01	
224	R15 002 936	G		Low pressure sensor	NSK-BD017D	2	2	2	2	2	2	P426338X01	<LP1,2>
225	R15 003 936	G		Sensor assy	Piping fixed	2	2	2	2	2	2	KC14L484G02	
226	R15 001 675	G		Element pull piping kit	System1							KC00M056G02	
227	R15 002 675	G		Element pull piping kit	System2							KC00M057G02	
228	R15 003 675	G		Pull piping kit	Water side HEX							KC00M058G02	
229	R15 004 675	G		Element pull piping kit	System1	1	1	1	1	1	1	KC00M056G03	
230	R15 005 675	G		Element pull piping kit	System2	1	1	1	1	1	1	KC00M057G03	
231	R15 006 675	G		Pull piping kit	Water side HEX	1	1	1	1	1	1	KC00M058G03	
232	R63 911 202	G		Thermistor		2	2	2	2	2	2	P425416X02	<TH11,21> Discharge
233	R63 670 202	G		Thermistor	MDW103H	10	10	10	10	10	10	P425496X01	<TH1~3,5~7,10,25~27>
234	R63 Y07 237	G		Belt heater	240V 45W	2	2	2	2	2	2	P493781X02	Under shell
235	R15 001 040	G		Housing joint	100A G-0	4	4			4	4	KC16K752H01	
236	R15 002 040	G		Housing joint	50A G-0	2	2			2	2	KC16K751H01	
237	R15 003 040	G		Housing joint	40A G	4	4	4	4	4	4	KC16K750H01	
238	R15 004 040	G		Housing joint	100A	2	2			2	2	KC16L639H01	
239	R15 004 171	G		Ball valve	50A SUS	2	2			2	2	KC16K753H01	
240	R15 002 171	G		Air purge valve		3	3	2	2	3	3	KC11L644H01	
241	R61 080 484	G		Accumulator						2		KB54B375G14	
242	R15 010 110	G		Tank assy	8.1L					2		KC54B665G06	
243	R63 852 860	G		Rubber mount		8	8	8	8	8	8	W897574H01	

EACV-P900YA(-N)(-BS)
EAHV-P900YA(-N)(-BS)
EAHV-P900YA-H(-N)(-BS)

MAIN CONTROL BOX PARTS



EACV-P900YA(-N)(-BS)
 EAHV-P900YA(-N)(-BS)
 EAHV-P900YA-H(-N)(-BS)

MAIN CONTROL BOX PARTS

No.	Part No.	G : RoHS Apply Only W : RoHS Apply by Running Change		Spec.	EACV-P900YA	EACV-P900YA-BS	EACV-P900YA-N	EACV-P900YA-N-BS	EAHV-P900YA	EAHV-P900YA-BS	Dwg. No.	Notes for the models	Revision info.
			Part Name										
301	R15 016 937	G	PCA board assy	CH10-MAIN	1	1	1	1	1	1	KE80C940G03		
302	R61 240 280	G	PCA board assy	INV20Y	1	1	1	1	1	1	KE80C154G14		
303	R15 017 937	G	Noise filter	30PYTST4C7-9	1	1	1	1	1	1	P417063X01		
304	R15 018 937	G	M-NET board	PCA DPSN-60EP D	1	1	1	1	1	1	P431040X04		
305	R12 001 360	G	Capacitor	CFSZ555J800LS	1	1	1	1	1	1	P412341X01		
306	R61 018 246	G	Short terminal relay		1	1	1	1	1	1	KE03D215H02		
307	R61 003 216	G	Relay	AHE 2231-K1	1	1	1	1	1	1	P421295X01		
308	R15 009 587	G	Terminal block	HP-T3011A104PL1S	1	1	1	1	1	1	S436005H19		
309	R61 001 234	G	Resistor	MFS40A220KI	2	2	2	2	2	2	P411151X01		
310	R61 017 259	G	Reactor	22.5A 4.23MH	1	1	1	1	1	1	P715458X01		
311	R15 003 310	G	Sheet		1	1	1	1	1	1	KC00K538G01		

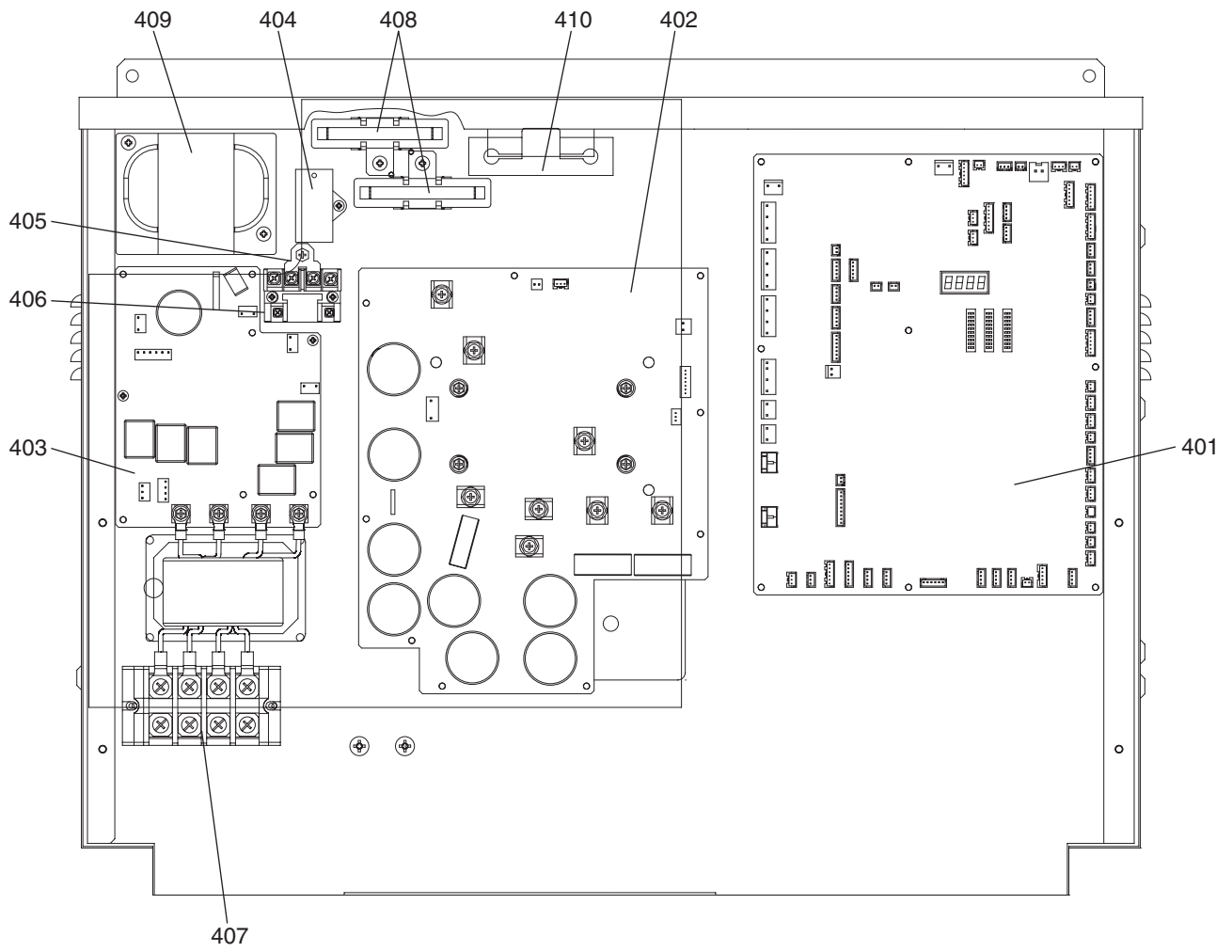
EACV-P900YA(-N)(-BS)
 EAHV-P900YA(-N)(-BS)
 EAHV-P900YA-H(-N)(-BS)

MAIN CONTROL BOX PARTS

No.	Part No.	G : RoHS Apply Only W : RoHS Apply by Running Change		Spec.	EAHV-P900YA-N	EAHV-P900YA-N-BS	EAHV-P900YA-H	EAHV-P900YA-H-BS	EAHV-P900YA-H-N	EAHV-P900YA-H-N-BS	Dwg. No.	Notes for the models	Revision info.
			Part Name										
301	R15 016 937	G	PCA board assy	CH10-MAIN	1	1	1	1	1	1	KE80C940G03		
302	R61 240 280	G	PCA board assy	INV20Y	1	1	1	1	1	1	KE80C154G14		
303	R15 017 937	G	Noise filter	30PYTST4C7-9	1	1	1	1	1	1	P417063X01		
304	R15 018 937	G	M-NET board	PCA DPSN-60EP D	1	1	1	1	1	1	P431040X04		
305	R12 001 360	G	Capacitor	CFSZ555J800LS	1	1	1	1	1	1	P412341X01		
306	R61 018 246	G	Short terminal relay		1	1	1	1	1	1	KE03D215H02		
307	R61 003 216	G	Relay	AHE 2231-K1	1	1	1	1	1	1	P421295X01		
308	R15 009 587	G	Terminal block	HP-T3011A104PL1S	1	1	1	1	1	1	S436005H19		
309	R61 001 234	G	Resistor	MFS40A220KI	2	2	2	2	2	2	P411151X01		
310	R61 017 259	G	Reactor	22.5A 4.23MH	1	1	1	1	1	1	P715458X01		
311	R15 003 310	G	Sheet		1	1	1	1	1	1	KC00K538G01		

EACV-P900YA(-N)(-BS)
EAHV-P900YA(-N)(-BS)
EAHV-P900YA-H(-N)(-BS)

SUB CONTROL BOX PARTS



EACV-P900YA(-N)(-BS)
 EAHV-P900YA(-N)(-BS)
 EAHV-P900YA-H(-N)(-BS)

SUB CONTROL BOX PARTS

No.	Part No.	G : RoHS Apply Only W : RoHS Apply by Running Change		Spec.	EACV-P900YA	EACV-P900YA-BS	EACV-P900YA-N	EACV-P900YA-N-BS	EAHV-P900YA	EAHV-P900YA-BS	Dwg. No.	Notes for the models	Revision info.
			Part Name										
401	R15 016 937	G	PCA board assy	CH10-MAIN	1	1	1	1	1	1	KE80C940G03		
402	R61 240 280	G	PCA board assy	INV20Y	1	1	1	1	1	1	KE80C154G14		
403	R15 017 937	G	Noise filter	30PYTST4C7-9	1	1	1	1	1	1	P417063X01		
404	R12 001 360	G	Capacitor	CFSZ555J800LS	1	1	1	1	1	1	P412341X01		
405	R61 018 246	G	Short terminal relay		1	1	1	1	1	1	KE03D215H02		
406	R61 003 216	G	Relay	AHE 2231-K1	1	1	1	1	1	1	P421295X01		
407	R15 009 587	G	Terminal block	HP-T3011A104PL1S	1	1	1	1	1	1	S436005H19		
408	R61 001 234	G	Resistor	MFS40A220KI	2	2	2	2	2	2	P411151X01		
409	R61 017 259	G	Reactor	22.5A 4.23MH	1	1	1	1	1	1	P715458X01		
410	R15 003 310	G	Sheet		1	1	1	1	1	1	KC00K538G01		

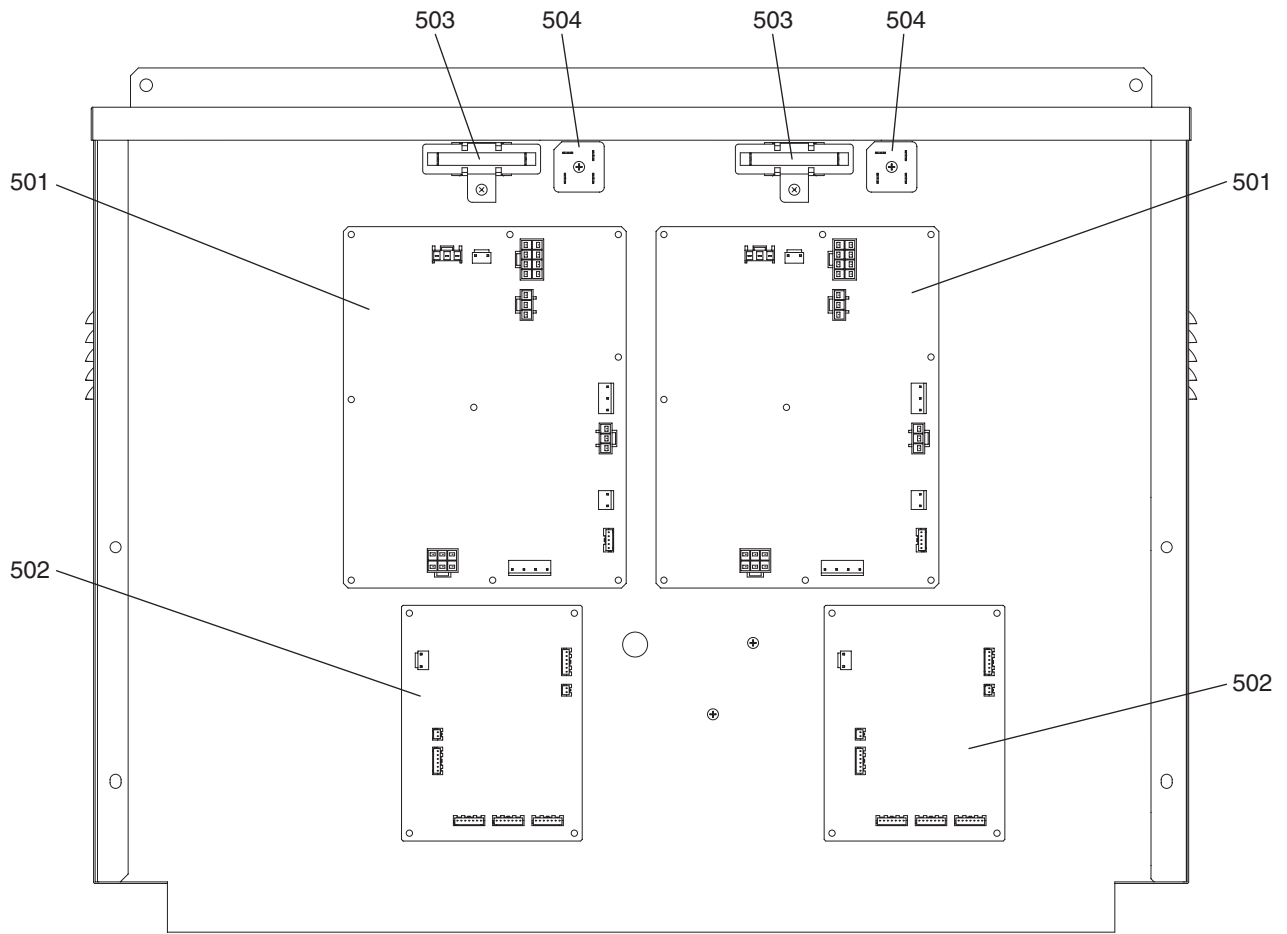
EACV-P900YA(-N)(-BS)
 EAHV-P900YA(-N)(-BS)
 EAHV-P900YA-H(-N)(-BS)

SUB CONTROL BOX PARTS

No.	Part No.	G : RoHS Apply Only W : RoHS Apply by Running Change	Part Name	Spec.	EAHV-P900YA-N	EAHV-P900YA-N-BS	EAHV-P900YA-H	EAHV-P900YA-H-BS	EAHV-P900YA-H-N	EAHV-P900YA-H-NBS	Dwg. No.	Notes for the models	Revision info.
401	R15 016 937	G	PCA board assy	CH10-MAIN	1	1	1	1	1	1	KE80C940G03		
402	R61 240 280	G	PCA board assy	INV20Y	1	1	1	1	1	1	KE80C154G14		
403	R15 017 937	G	Noise filter	30PYTST4C7-9	1	1	1	1	1	1	P417063X01		
404	R12 001 360	G	Capacitor	CFSZ555J800LS	1	1	1	1	1	1	P412341X01		
405	R61 018 246	G	Short terminal relay		1	1	1	1	1	1	KE03D215H02		
406	R61 003 216	G	Relay	AHE 2231-K1	1	1	1	1	1	1	P421295X01		
407	R15 009 587	G	Terminal block	HP-T3011A104PL1S	1	1	1	1	1	1	S436005H19		
408	R61 001 234	G	Resistor	MFS40A220KI	2	2	2	2	2	2	P411151X01		
409	R61 017 259	G	Reactor	22.5A 4.23MH	1	1	1	1	1	1	P715458X01		
410	R15 003 310	G	Sheet		1	1	1	1	1	1	KC00K538G01		

EACV-P900YA(-N)(-BS)
EAHV-P900YA(-N)(-BS)
EAHV-P900YA-H(-N)(-BS)

FAN CONTROL BOX PARTS



EACV-P900YA(-N)(-BS)
 EAHV-P900YA(-N)(-BS)
 EAHV-P900YA-H(-N)(-BS)

FAN CONTROL BOX PARTS

No.	Part No.	G : RoHS Apply Only W : RoHS Apply by Running Change	Part Name	Spec.	EACV-P900YA	EACV-P900YA-BS	EACV-P900YA-N	EACV-P900YA-N-BS	EAHV-P900YA	EAHV-P900YA-BS	Dwg. No.	Notes for the models	Revision info.
501	R63 139 280	G	PCA board assy	BS09SNF	2	2	2	2	2	2	KE80C403G01		
502	R15 019 937	G	PCA board assy	FAN-CONT	2	2	2	2	2	2	KE80G112G01		
503	R63 670 234	G	Resistor	MFS30A220KI	2	2	2	2	2	2	P411113X01		
504	R61 002 320	G	Diode bridge	S25VB60	2	2	2	2	2	2	S414003H64		

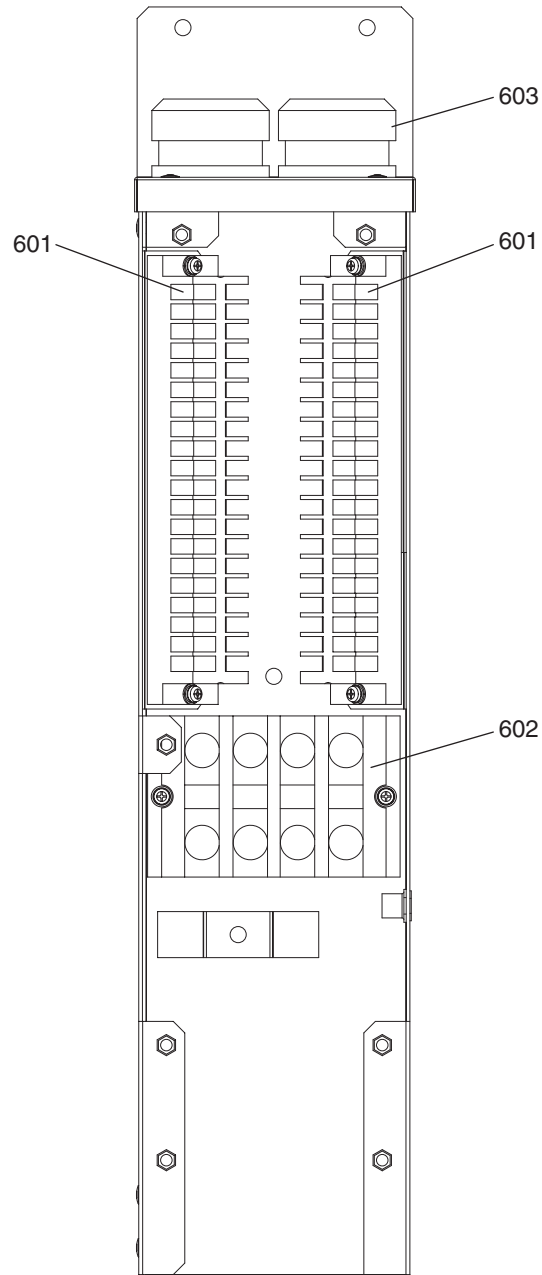
EACV-P900YA(-N)(-BS)
 EAHV-P900YA(-N)(-BS)
 EAHV-P900YA-H(-N)(-BS)

FAN CONTROL BOX PARTS

No.	Part No.	G : RoHS Apply Only W : RoHS Apply by Running Change		Spec.	EAHV-P900YA-N	EAHV-P900YA-N-BS	EAHV-P900YA-H	EAHV-P900YA-H-BS	EAHV-P900YA-H-N	EAHV-P900YA-H-BS	Dwg. No.	Notes for the models	Revision info.
			Part Name										
501	R63 139 280	G	PCA board assy	BS09SNF	2	2	2	2	2	2	KE80C403G01		
502	R15 019 937	G	PCA board assy	FAN-CONT	2	2	2	2	2	2	KE80G112G01		
503	R63 670 234	G	Resistor	MFS30A220KI	2	2	2	2	2	2	P411113X01		
504	R61 002 320	G	Diode bridge	S25VB60	2	2	2	2	2	2	S414003H64		

EACV-P900YA(-N)(-BS)
EAHV-P900YA(-N)(-BS)
EAHV-P900YA-H(-N)(-BS)

TERMINAL BOX PARTS



EACV-P900YA(-N)(-BS)
 EAHV-P900YA(-N)(-BS)
 EAHV-P900YA-H(-N)(-BS)

TERMINAL BOX PARTS

No.	Part No.	G : RoHS Apply Only W : RoHS Apply by Running Change		Spec.	EACV-P900YA	EACV-P900YA-BS	EACV-P900YA-N	EACV-P900YA-N-BS	EAHV-P900YA	EAHV-P900YA-BS	Dwg. No.	Notes for the models	Revision info.
			Part Name										
601	R15 001 587	G	Terminal block	BTB15C20	2	2	2	2	2	2	P436186X01		
602	R15 009 587	G	Terminal block	HP-T3011A104PL1S	1	1	1	1	1	1	S436005H19		
603	R15 001 052	G	SC lock	SCL-B30B	3	3	3	3	3	3	KC32K792H01		

EACV-P900YA(-N)(-BS)
 EAHV-P900YA(-N)(-BS)
 EAHV-P900YA-H(-N)(-BS)

TERMINAL BOX PARTS

No.	Part No.	G : RoHS Apply Only W : RoHS Apply by Running Change		Spec.	EACV-P900YA-N	EAHV-P900YA-N-BS	EAHV-P900YA-H	EAHV-P900YA-H-BS	EAHV-P900YA-H-N	EAHV-P900YA-H-NBS	Dwg. No.	Notes for the models	Revision info.
			Part Name										
601	R15 001 587	G	Terminal block	BTB15C20	2	2	2	2	2	2	P436186X01		
602	R15 009 587	G	Terminal block	HP-T3011A104PL1S	1	1	1	1	1	1	S436005H19		
603	R15 001 052	G	SC lock	SCL-B30B	3	3	3	3	3	3	KC32K792H01		

mitsubishi electric corporation

BWE015160 (20150630)