

OUTDOOR UNIT

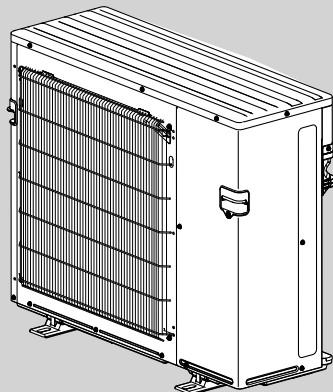
No. OBB723

PARTS CATALOG

Models

MXZ-4E83VA - E1, ET1

MXZ-5E102VA - E1, ET1



NOTE:

RoHS compliant products have <G> mark on the spec name plate.

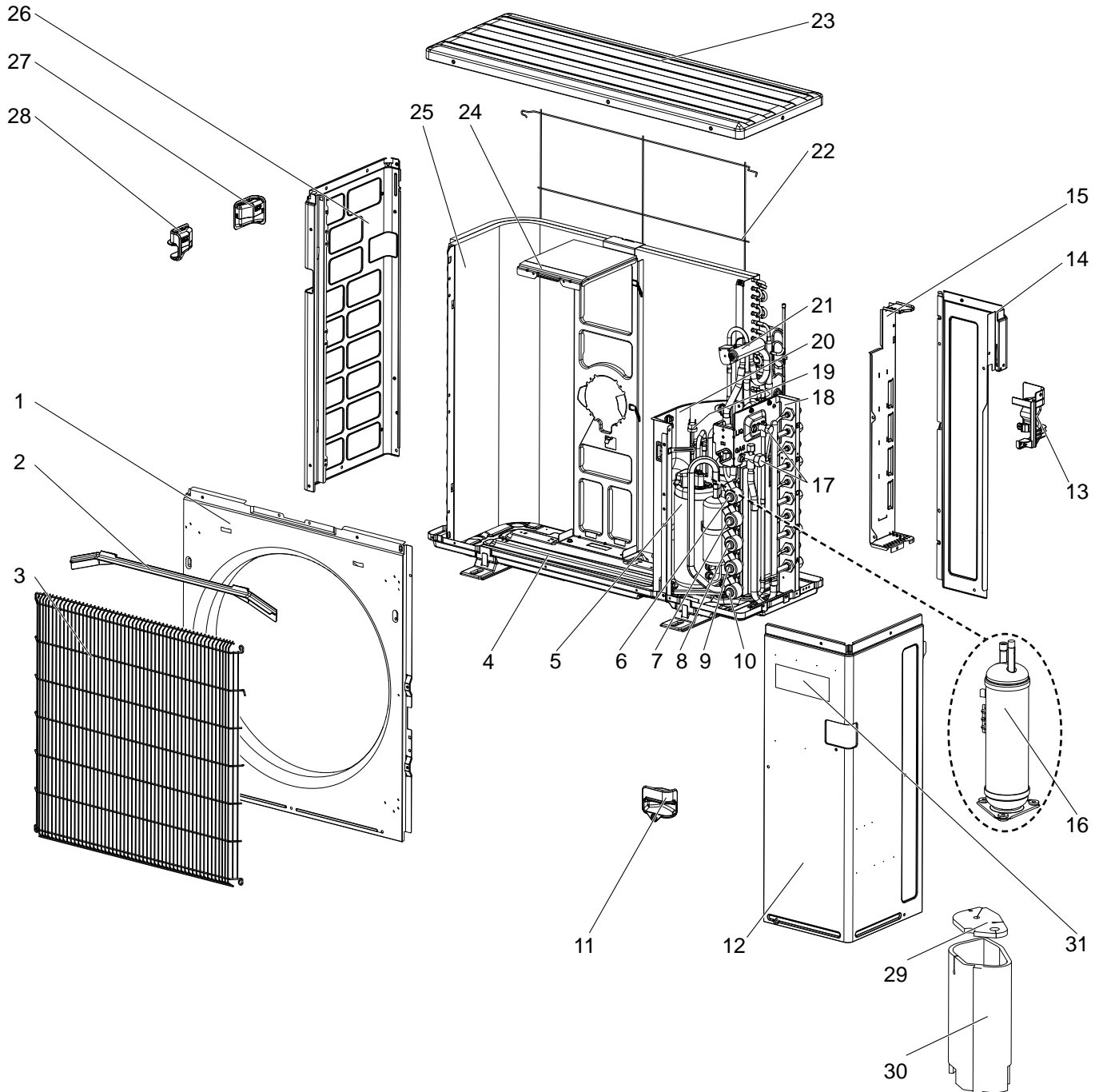
CONTENTS

1. RoHS PARTS LIST.....	2
2. OPTIONAL PARTS.....	6

SERVICE MANUAL (OBH723)

MXZ-4E83VA MXZ-5E102VA

1-1. OUTDOOR UNIT STRUCTURAL PARTS AND FUNCTIONAL PARTS



RoHS PARTS LIST (RoHS compliant)

MXZ-4E83VA MXZ-5E102VA

1-1. OUTDOOR UNIT STRUCTURAL PARTS AND FUNCTIONAL PARTS

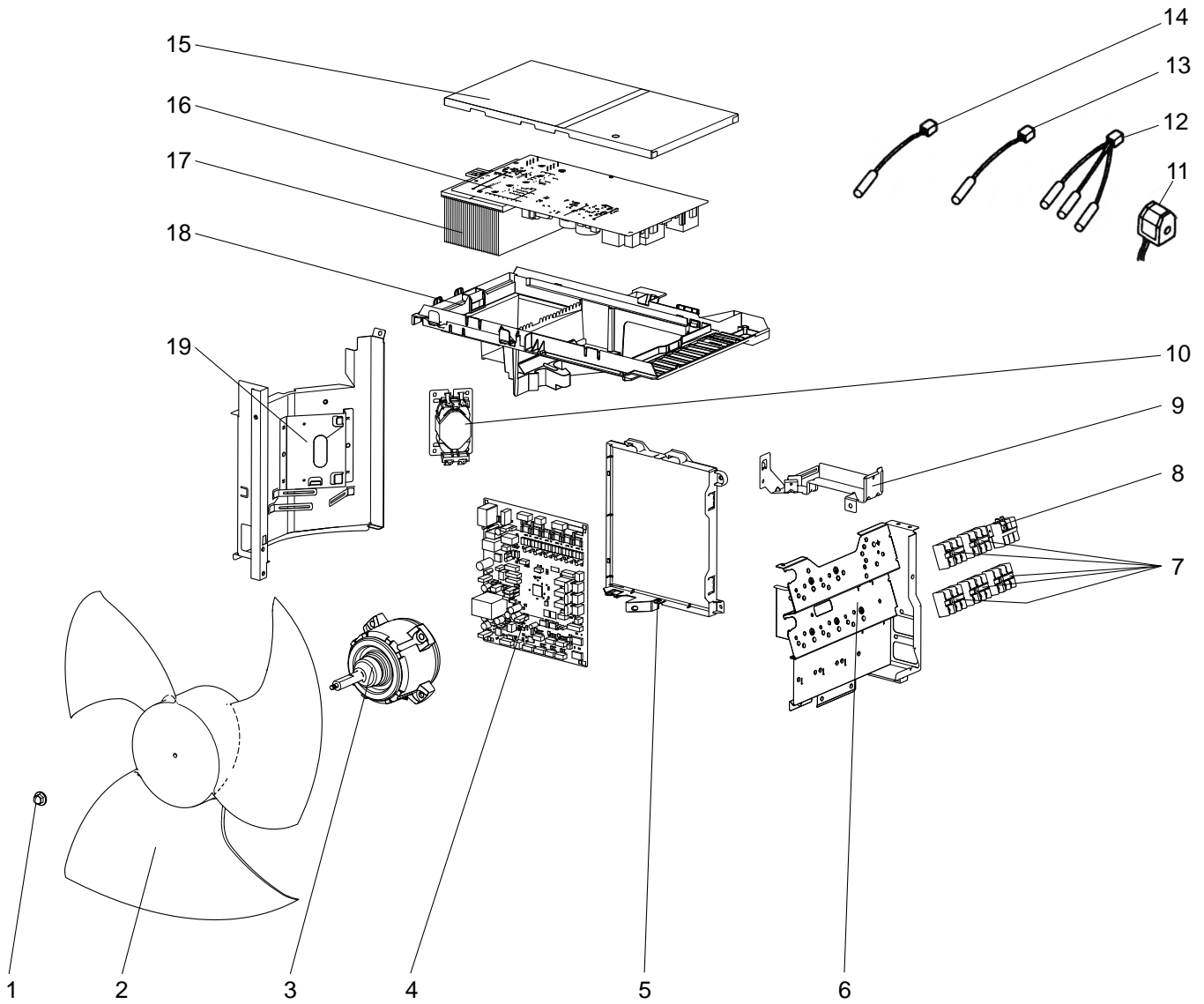
Part number that is circled is not shown in the illustration.

No.	RoHS	Parts No.	Parts Name	Symbol in Wiring Diagram	Q'ty/unit				Remarks
					MXZ-				
					4E83VA- E1	4E83VA- ET1	5E102VA- E1	5E102VA- ET1	
1	G	T7W E23 668	FRONT PANEL		1	1	1	1	
2	G	R01 E02 631	ICE GUARD		1	1	1	1	
3	G	T7W E09 691	WIRE GRILLE		1	1	1	1	
4	G	T7W E24 686	BASE ASSEMBLY		1	1	1	1	
5	G	T97 420 607	COMPRESSOR	MC	1	1	1	1	SNB220FAGMC Including RUBBER MOUNTS
6	G	T7W E60 401	EXPANSION VALVE ASSEMBLY				1	1	E room, Including UNION AND CAPILLARY TUBE
	G	T7W E82 242	LEV COIL	LEV E			1	1	E room, Connector: BLACK
7	G	T7W E59 401	EXPANSION VALVE ASSEMBLY		1	1	1	1	D room, Including UNION AND CAPILLARY TUBE
	G	T7W E81 242	LEV COIL	LEV D	1	1	1	1	D room, Connector: YELLOW
8	G	T7W E58 401	EXPANSION VALVE ASSEMBLY		1	1	1	1	C room, Including UNION AND CAPILLARY TUBE
	G	T7W E80 242	LEV COIL	LEV C	1	1	1	1	C room Connector: BLUE
9	G	T7W E57 401	EXPANSION VALVE ASSEMBLY		1	1	1	1	B room, Including UNION AND CAPILLARY TUBE
	G	T7W E79 242	LEV COIL	LEV B	1	1	1	1	B room, Connector: RED
10	G	T7W E56 401	EXPANSION VALVE ASSEMBLY		1	1	1	1	A room, Including UNION AND CAPILLARY TUBE
	G	T7W E78 242	LEV COIL	LEV A	1	1	1	1	A room, Connector: WHITE
11	G	T7W A02 655	HANDLE (R FRONT)		1	1	1	1	
12	G	T7W E22 667	SERVICE PANEL		1	1	1	1	
13	G	T7W A04 655	HANDLE (R REAR)		1	1	1	1	
14	G	T7W E10 682	REAR PANEL		1	1	1	1	
15	G	T7W E39 661	BACK PILLAR		1	1	1	1	
16	G	T7W E27 440	ACCUMULATOR		1	1	1	1	
17	G	T7W E07 410	STOP VALVE ASSEMBLY		1	1	1	1	Including both VALVES
18	G	-	UNION BED		1	1			DWG. No. WQ02A059G14
	G	-	UNION BED				1	1	DWG. No. WQ02A059G12
19	G	T7W E01 208	HIGH PRESSURE SWITCH	HPS	1	1	1	1	4.8 MPa
20	G	-	SEPARATOR		1	1	1	1	DWG. No. WQ00C142G02
21	G	T7W E06 403	4-WAY VALVE		1	1	1	1	
22	G	T7W E06 698	REAR GUARD		1	1	1	1	
23	G	T7W E12 641	TOP PANEL		1	1	1	1	
24	G	T7W E17 130	MOTOR SUPPORT		1	1	1	1	
25	G	T7W E75 408	OUTDOOR HEAT EXCHANGER		1	1	1	1	Including CAPILLARY TUBES AND DISTRIBUTOR
26	G	T7W E10 662	SIDE PANEL (L)		1	1	1	1	
27	G	T7W A01 655	HANDLE (REAR)		1	1	1	1	
28	G	T7W A00 655	HANDLE (FRONT)		1	1	1	1	
29	G	T7W A01 602	COMPRESSOR FELT (TOP)		1	1	1	1	
30	G	T7W A00 602	COMPRESSOR FELT (BODY)		1	1	1	1	
31	G	T7W A01 005	BRAND LABEL		1	1	1	1	
32	G	T7W A00 508	DAMPER SET		1	1			2 PCS SET 95 x 250 T2 (mm)
	G	T7W A01 508	DAMPER SET				1	1	2 PCS SET 95 x 320 T2 (mm)

RoHS PARTS LIST (RoHS compliant)

MXZ-4E83VA MXZ-5E102VA

1-2. OUTDOOR UNIT FUNCTIONAL PARTS AND ELECTRICAL PARTS



RoHS PARTS LIST (RoHS compliant)

MXZ-4E83VA MXZ-5E102VA

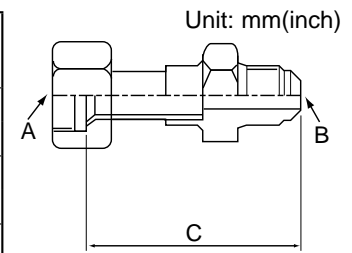
1-2. OUTDOOR UNIT FUNCTIONAL PARTS AND ELECTRICAL PARTS

Part number that is circled is not shown in the illustration.

No.	RoHS	Parts No.	Parts Name	Symbol in Wiring Diagram	Q'ty/unit				Remarks
					MXZ-				
					4E83VA- E1	4E83VA- ET1	5E102VA- E1	5E102VA- ET1	
1	G	R01 E09 097	PROPELLER FAN NUT		1	1	1	1	
2	G	T7W A00 115	PROPELLER FAN		1	1	1	1	
3	G	T7W A02 221	OUTDOOR FAN MOTOR	MF	1	1	1	1	
4	G	T7W GP0 315	OUTDOOR CONTROL P.C. BOARD		1	1			
	G	T7W GR0 315	OUTDOOR CONTROL P.C. BOARD				1	1	
5	G	T7W A01 327	CB HOLDER		1	1	1	1	
6	G	-	ELECTRICAL PARTS BOX RIGHT		1	1	1	1	DWG. No. WM00B522G07
7	G	T7W E13 716	TERMINAL BLOCK	TB2,3,4,5,(6)	4	4	5	5	INDOOR UNIT CONNECTING 3P (S1, S2, S3)
8	G	T7W E65 716	TERMINAL BLOCK	TB1	1	1	1	1	POWER SUPPLY 3P (L, N, ⊕)
9	G	-	UNDER FRAME		1	1	1	1	DWG. No. WM00C604G01
10	G	T7W E25 259	REACTOR	L	1	1	1	1	
11	G	T7W E83 242	R.V. COIL	21S4	1	1	1	1	
12	G	T7W E71 202	THERMISTOR	RT61,62,68	1	1	1	1	DEFROST, DISCHARGE, OUTDOOR HEAT EXCHANGER
13	G	T7W E72 202	THERMISTOR	RT65	1	1	1	1	AMBIENT
14	G	R01 E99 202	THERMISTOR	RT64	1	1	1	1	FIN (HEAT SINK)
15	G	T7W A00 325	PB COVER		1	1	1	1	
16	G	T7W AW0 323	OUTDOOR POWER P.C. BOARD		1	1	1	1	
17	G	T7W A03 371	HEAT SINK		1	1	1	1	
18	G	T7W A00 327	PB HOLDER		1	1	1	1	
19	G	-	ELECTRICAL PARTS BOX LEFT		1	1	1	1	DWG. No. WM00B521G06
⑳	G	T7W A00 510	COMPRESSOR LEAD ASSEMBLY SET		1	1	1	1	

2-1. DIFFERENT-DIAMETER PIPE

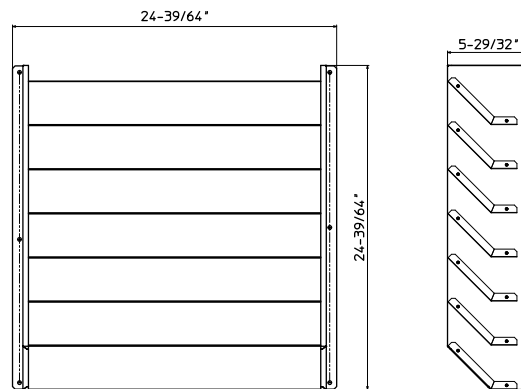
MXZ-4E83VA MXZ-5E102VA	Model name	Connected pipes diameter	Diameter A	Diameter B	Length C
For different diameter pipes	MAC-A454JP-E	φ9.52 — φ12.7 (3/8) (1/2)	φ9.52 (3/8)	φ12.7 (1/2)	69
	MAC-A455JP-E	φ12.7 — φ9.52 (1/2) (3/8)	φ12.7 (1/2)	φ9.52 (3/8)	65
	MAC-A456JP-E	φ12.7 — φ15.88 (1/2) (5/8)	φ12.7 (1/2)	φ15.88 (5/8)	66.5
	PAC-493PI	φ6.35 — φ9.52 (1/4) (3/8)	φ6.35 (1/4)	φ9.52 (3/8)	60.5
	PAC-SG76RJ-E	φ9.52 — φ15.88 (3/8) (5/8)	φ9.52 (3/8)	φ15.88 (5/8)	101.5



2-2. OUTLET GUIDE

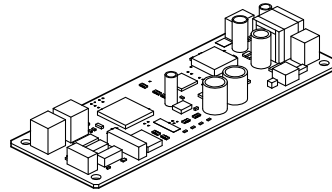
Changes air discharge direction.

Applied unit	Model name	Model code
MXZ-4E83VA MXZ-5E102VA	PAC-SH96SG-E	7H2N19



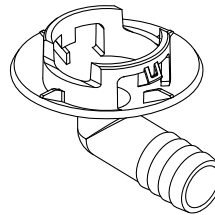
2-3. M-NET ADAPTER

Applied unit	Model name	Model code
MXZ-4E83VA MXZ-5E102VA	PAC-IF01MNT-E	7H2N34



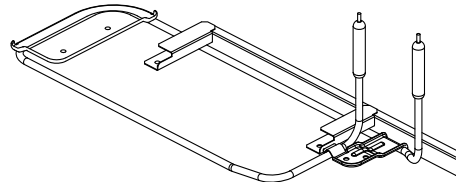
2-4. DRAIN SOCKET

Applied unit	Model name	Model code
MXZ-4E83VA MXZ-5E102VA	PAC-SG60DS-E	7H2N24



2-5. BASE HEATER

Applied unit	Model name	Model code
MXZ-4E83VA MXZ-5E102VA	PAC-645BH-E	7H2590



Components

① Base heater	1	④ Base heater support (2)	1	⑦ Cable tie	2
② Heater guard	1	⑤ Clamp	1	⑧ Fastener	2
③ Base heater support (1)	1	⑥ Screw	8	⑨ Spec label	1

MITSUBISHI ELECTRIC CORPORATION

HEAD OFFICE: TOKYO BLDG., 2-7-3, MARUNOUCHI, CHIYODA-KU, TOKYO 100-8310, JAPAN