



At the heart of both the R2 and WR2 Series, the BC controller makes simultaneous heating and cooling possible. It has the inherent 'intelligence' to be the system's decision-maker.

Key Features

- Transferring energy around the system
- Drawing on energy from the heat source units/outdoor units
- Directing energy as requested by the individual indoor units
- Instructs the heat source unit/outdoor unit on the amount of refrigerant (liquid or gas) that is required to achieve the requested cooling or heating requirements
- Allows unique 2-pipe heat recovery application
- HIC Circuit for improved efficiency
- Brazed connections



Air Conditioning

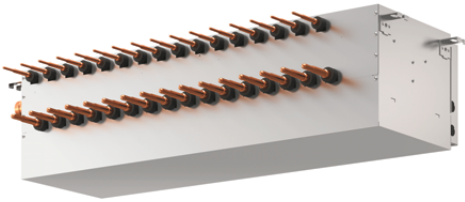
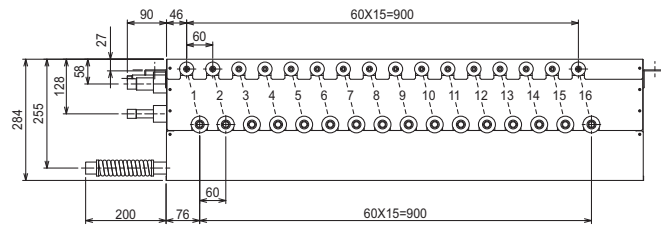
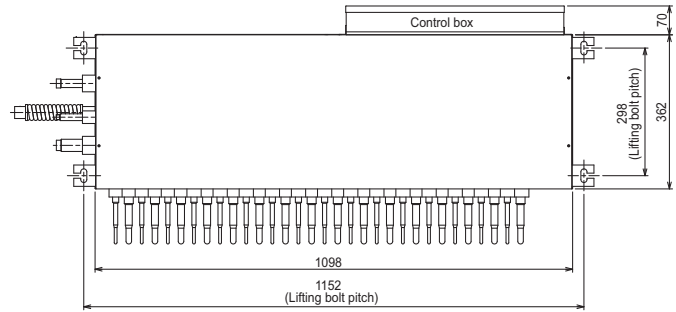
Product Information

CMB-P1016V-HB1 Slave BC Controller

Making a
World of
Difference

SLAVE BC CONTROLLER		CMB-P1016V-HB1
NUMBER OF CONNECTIONS		16
WEIGHT (kg)		55
DIMENSIONS (mm)	Width	1098
	Depth	432
	Height	284
ELECTRICAL SUPPLY		220-240v, 50Hz
PHASE		Single
POWER INPUT (kW)		0.301
RUNNING CURRENT (A)		1.26
FUSE RATING (BS88) – HRC (A)		6
MAINS CABLE NO. CORES		3

DIMENSIONS



Telephone: 01707 282880

email: air.conditioning@meuk.mee.com web: www.airconditioning.mitsubishielectric.co.uk

UNITED KINGDOM Mitsubishi Electric Europe Living Environmental Systems Division
Travellers Lane, Hatfield, Hertfordshire, AL10 8XB, England General Enquiries Telephone: 01707 282880 Fax: 01707 278881

IRELAND Mitsubishi Electric Europe Westgate Business Park, Ballymount, Dublin 24, Ireland
Telephone: Dublin (01) 419 8800 Fax: Dublin (01) 419 8890 International code: (003531)

Country of origin: United Kingdom – Japan – Thailand – Malaysia. ©Mitsubishi Electric Europe 2015. Mitsubishi and Mitsubishi Electric are trademarks of Mitsubishi Electric Europe B.V. The company reserves the right to make any variation in technical specification to the equipment described, or to withdraw or replace products without prior notification or public announcement. Mitsubishi Electric is constantly developing and improving its products. All descriptions, illustrations, drawings and specifications in this publication present only general particulars and shall not form part of any contract. All goods are supplied subject to the Company's General Conditions of Sale, a copy of which is available on request. Third-party product and brand names may be trademarks or registered trademarks of their respective owners.



Note: The fuse rating is for guidance only. Please refer to the relevant databook for detailed specification. It is the responsibility of a qualified electrician/electrical engineer to select the correct cable size and fuse rating based on current regulation and site specific conditions. Mitsubishi Electric's air conditioning and heat pump systems contain fluorinated greenhouse gases R410A, R407C and R134a.



www.greengateway.mitsubishielectric.co.uk

Mitsubishi Electric UK's commitment
to the environment

Follow us @meuk_les
Follow us @green_gateway

Mitsubishi Electric
Living Environmental Systems UK

mitsubishielectric2

Effective as of April 2015