



At the heart of both the R2 and WR2 Series, the BC controller makes simultaneous heating and cooling possible. It has the inherent 'intelligence' to be the system's decision-maker.

#### Key Features

- Transferring energy around the system
- Drawing on energy from the heat source units/outdoor units
- Directing energy as requested by the individual indoor units
- Instructs the heat source unit/outdoor unit on the amount of refrigerant (liquid or gas) that is required to achieve the requested cooling or heating requirements
- Allows unique 2-pipe heat recovery application
- HIC Circuit for improved efficiency
- Brazed connections



# Air Conditioning

## Product Information

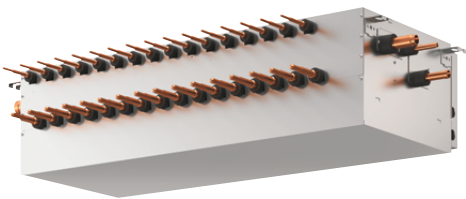
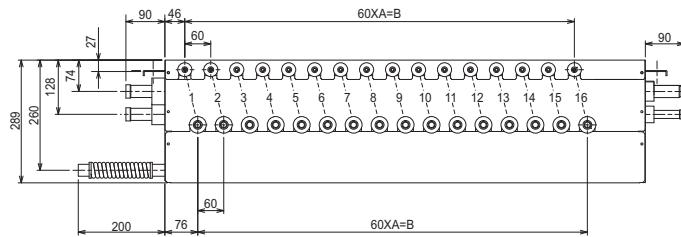
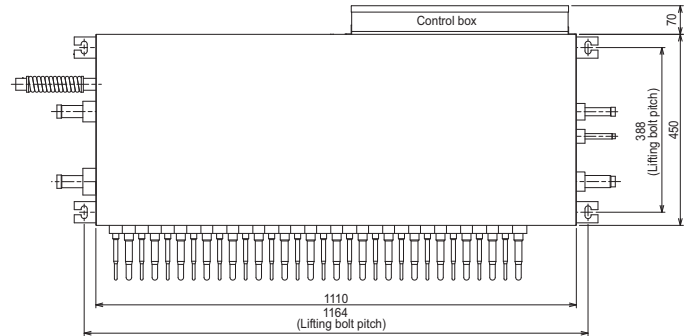
### CMB-P108V-GA1 Master BC Controller

Making a  
World of  
Difference

MASTER BC CONTROLLER		CMB-P108V-GA1
NUMBER OF CONNECTIONS		8
WEIGHT (kg)		43
DIMENSIONS (mm)		
Width		1110
Depth		520
Height		289
ELECTRICAL SUPPLY		220-240v, 50Hz
PHASE		Single
POWER INPUT (kW)		0.161
RUNNING CURRENT (A)		0.68
FUSE RATING (BS88) – HRC (A)		6
MAINS CABLE NO. CORES		3

Notes: CMB-P-V-GA1 units are for use with PURY-P200-650Y(S)LM-A1, PURY-EP200-650Y(S)LM-A1 & PORY-P200-600Y(S)HM-A units only.

## DIMENSIONS



	A	B
CMB-P108V-GA1	7	420
CMB-P1010V-GA1	9	540
CMB-P1013V-GA1	12	720
CMB-P1016V-GA1/HA1	15	900



Telephone: 01707 282880

email: [air.conditioning@meuk.mee.com](mailto:air.conditioning@meuk.mee.com) web: [www.airconditioning.mitsubishielectric.co.uk](http://www.airconditioning.mitsubishielectric.co.uk)

UNITED KINGDOM Mitsubishi Electric Europe Living Environmental Systems Division  
Travellers Lane, Hatfield, Hertfordshire, AL10 8XB, England General Enquiries Telephone: 01707 282880 Fax: 01707 278881

IRELAND Mitsubishi Electric Europe Westgate Business Park, Ballymount, Dublin 24, Ireland  
Telephone: Dublin (01) 419 8800 Fax: Dublin (01) 419 8890 International code: (003531)

Country of origin: United Kingdom – Japan – Thailand – Malaysia. ©Mitsubishi Electric Europe 2015. Mitsubishi and Mitsubishi Electric are trademarks of Mitsubishi Electric Europe B.V. The company reserves the right to make any variation in technical specification to the equipment described, or to withdraw or replace products without prior notification or public announcement. Mitsubishi Electric is constantly developing and improving its products. All descriptions, illustrations, drawings and specifications in this publication present only general particulars and shall not form part of any contract. All goods are supplied subject to the Company's General Conditions of Sale, a copy of which is available on request. Third-party product and brand names may be trademarks or registered trademarks of their respective owners.



Note: The fuse rating is for guidance only. Please refer to the relevant databook for detailed specification. It is the responsibility of a qualified electrician/electrical engineer to select the correct cable size and fuse rating based on current regulation and site specific conditions. Mitsubishi Electric's air conditioning and heat pump systems contain fluorinated greenhouse gases R410A, R407C and R134a.



[www.greengateway.mitsubishielectric.co.uk](http://www.greengateway.mitsubishielectric.co.uk)

Mitsubishi Electric UK's commitment  
to the environment

Follow us @meuk\_les  
Follow us @green\_gateway

Mitsubishi Electric  
Living Environmental Systems UK

mitsubishielectric2

Effective as of April 2015