

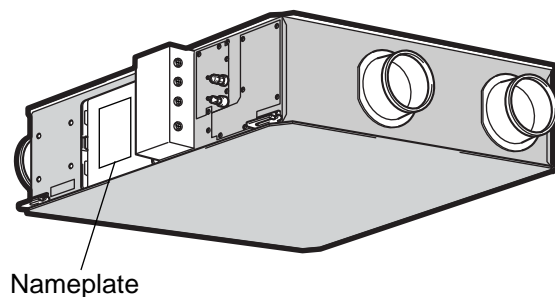
FRESH MASTER

HAND BOOK

FOR DEALERS

Model: GUF-50RD3 ①
 GUF-50RD3 ②
 GUF-50RD3 ③
 GUF-50RD3 ④

Humidifier function is not available.













Repair work should be performed by the manufacturer, its service agent or similarly qualified person in order to avoid hazards.

Contents

1. Safety precautions	3-4
2. Modifications	4
3. Specifications	5
4. Outside dimensions	5
5. Electrical wiring diagram	6
6. Overhaul procedure.....	7-14
7. Parts catalog	15-39
GUF-50RD3 ①	16-21
GUF-50RD3 ②	22-27
GUF-50RD3 ③	28-33
GUF-50RD3 ④	34-39

1. Safety precautions

- Please be sure to read the following precautions thoroughly before commencing with the maintenance work, and conduct the inspection and repair of the product in a safe manner.
- The types and levels of danger that may arise if the product is handled incorrectly are described by using the warning symbols shown below.

 Warning		Incorrect handling of the product may result in serious injury or death.	
<p>◇ Electric shock</p> <p>If you must inspect the circuitry while the power is on, do not touch the live parts.</p> <p>(Failure to heed this warning may result in electric shock.)</p> <div style="text-align: right;">  <p>Caution against electric shock</p> </div>	<p>◇ Turn off the power supply</p> <p>Be sure to shut off the ground fault circuit interrupter before disassembling the unit for repair.</p> <p>(Failure to heed this warning may result in electric shock.)</p> <div style="text-align: right;">  <p>Be sure to follow this instruction.</p> </div>		
<p>◇ Modification is prohibited</p> <p>Do not modify the unit.</p> <p>(Failure to heed this warning may result in electric shock, fire and/or bodily injury.)</p> <div style="text-align: right;">  <p>Prohibited</p> </div>	<p>◇ Use proper parts and tools</p> <p>For repair, be sure to use the parts listed in the service parts list of the applicable model and use the proper tools.</p> <p>(Failure to heed this warning may result in electric shock, fire and/or bodily injury.)</p> <div style="text-align: right;">  <p>Be sure to follow this instruction.</p> </div>		
<p>◇ Do not mix anything other than the specified coolant of the same type used in the outdoor unit.</p> <p>Do not charge any coolant different from the coolant used in the outdoor unit.</p> <p>(Failure to heed this warning may cause the pressure inside the freezing cycle to become abnormally high, leading to bodily injury or other damage.)</p> <div style="text-align: right;">  <p>Prohibited</p> </div>	<p>◇ Proper electric work</p> <p>Use the electric wires designated for electric work, and conduct electric work in accordance with the "Electric Installation Engineering Standard", the "Indoor Wiring Regulations", and the Installation Work Guide.</p> <p>(Incomplete connection or wiring installation may result in electric shock and/or fire.)</p> <div style="text-align: right;">  <p>Be sure to follow this instruction.</p> </div>		
<p>◇ Toxic gas generation</p> <ul style="list-style-type: none"> • Be careful that the coolant (R407C, R410A, R22) does not leak in a flammable environment. • Conduct welding operation in an open room. • If the coolant gas leaks, open the windows while servicing. • Be sure to completely repair the leak. Close the service valve if the repair work is temporarily suspended. <p>(If the coolant gas comes into contact with flames such as open fire, sparks and a heater, it may generate toxic gas.)</p> <div style="text-align: right;">  <p>Be sure to follow this instruction.</p> </div>	<p>◇ Replace damaged and/or degraded parts</p> <p>Be sure to replace the power-supply cord and lead wires in the event that they are damaged and/or degraded.</p> <p>(Failure to heed this warning may result in electric shock and/or fire.)</p> <div style="text-align: right;">  <p>Be sure to follow this instruction.</p> </div>		
	<p>◇ Check insulation</p> <p>Be sure to measure the insulation resistance once the repair work is complete, and turn on the power supply after verifying that an insulation resistance of at least 10MΩ is obtained.</p> <p>(If an insulation problem exists, it may result in electric shock.)</p> <div style="text-align: right;">  <p>Be sure to follow this instruction.</p> </div>		



Caution

Incorrect handling of the product may result in serious injury or damage to properties including buildings and equipment.

◇ Caution for bodily injury

Do not conduct any work at a location where you do not have a sure footing.

(Failure to heed this caution may result in a fall.)



Prohibited

◇ Wear gloves

Wear gloves when conducting work.

(Failure to heed this caution may result in injury to your hands from sharp metal or other edges.)



Be sure to follow this instruction.

◇ Prevent water leakage

- Before removing any of the water-related parts, completely drain the residual water from the piping.
- After the repair is complete, be sure to check the drainage of the indoor unit and that no water leaks from any of the piping connections.

(Water leakage may cause buildings to soil, leading to secondary failure of other parts.)

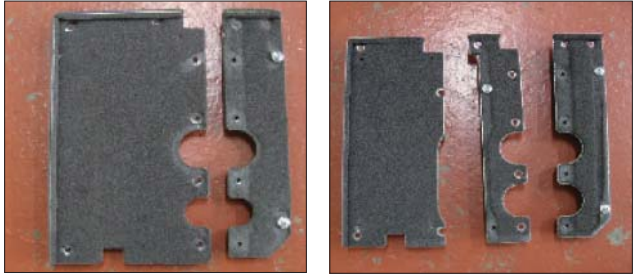


Be sure to follow this instruction.

Request for repair

- Inspect the grounding, and repair it if incomplete. Make sure that a ground fault circuit interrupter or an over-load protection device is being installed. If not, recommend the dealer to install one.
- Make sure that the product operates properly upon completion of repair. Clean the product as well as the surrounding area, and then notify the customer of the completion of repair.

2. Modifications

Model	Comparative model	Modified parts
GUF-50RD ₃ ①	GUF-50RD ₃	Lossnay core material (Change to new parts)
GUF-50RD ₃ ②	GUF-50RD ₃ ①	Circuit board (Change to new parts)
GUF-50RD ₃ ③	GUF-50RD ₃ ②	Drain pan (Unavailable as a service part)
GUF-50RD ₃ ④	GUF-50RD ₃ ③	Heat exchanger's cover (Use the appropriate cover type (previous/latest))
		
		(Previous) (Latest)

3. Specifications

Model	Power supply (V)	Frequency (Hz)	Current (A)	Power consumption (W)	Air volume		External air load heat processing capability (kw)		Noise (dB)	Weight (kg)	Equivalent indoor unit capability
					m³/h	L/S	Cooling capability	Heating capability			
GUF-50RD3 ① GUF-50RD3 ② GUF-50RD3 ③ GUF-50RD3 ④	Single-phase 220-240	50	1.15	235-265	500	139	5.29 (1.66)	6.42 (2.25)	33.5-34.5	54	P32

- The values given in the table for the noise level reflect the levels measured at a position 1.5 meters immediately below the unit in an anechoic chamber.
 - The noise at the air outlets (at a 45° angle, 1.5 meters in front) is about 5-6 dB (A) higher than the values given in the table.
 - The above values apply during Lossnay ventilation when the fan speed is set to high speed.
- * Capability in () is heat recovery capability by Lossnay core.

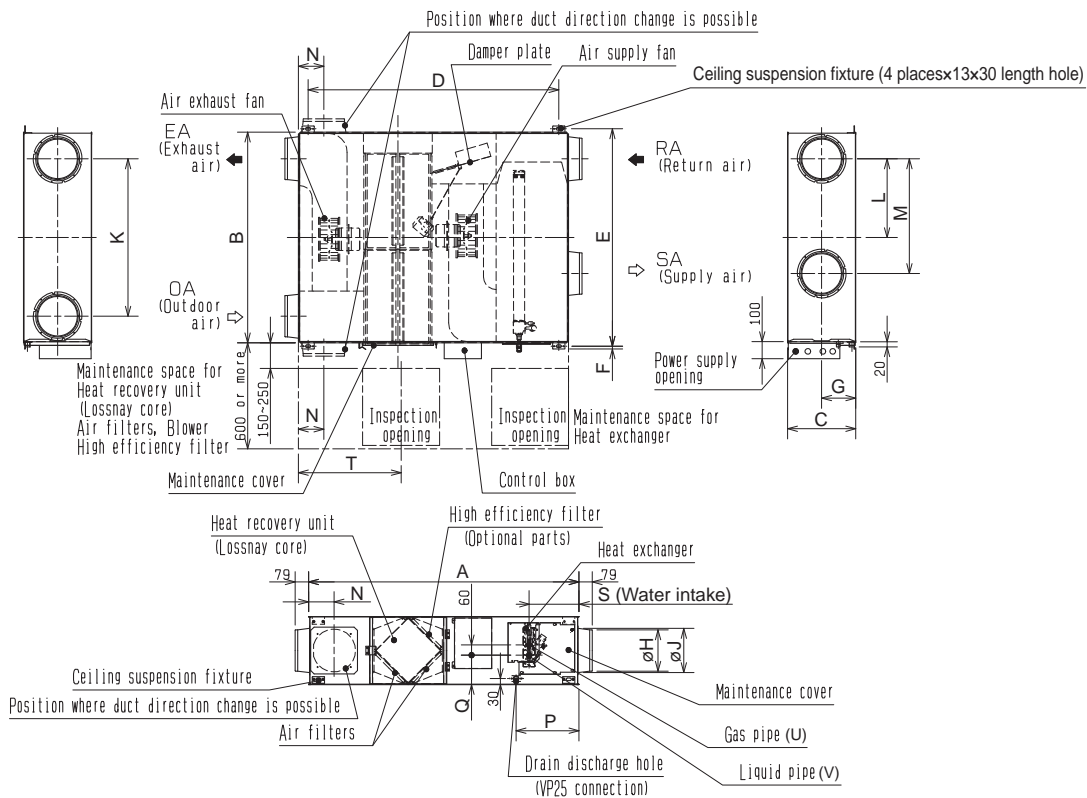
Cooling/Heating capability indicates the maximum value at operation under the following condition.

Cooling: Indoor: 27°C DB/19.5°C WB Outdoor: 35°C DB/24°C WB

Heating: Indoor: 21°C DB/14.6°C WB Outdoor: 7°C DB/6°C WB

4. Outside dimensions

GUF-50RD3 ① , GUF-50RD3 ② , GUF-50RD3 ③ , GUF-50RD3 ④

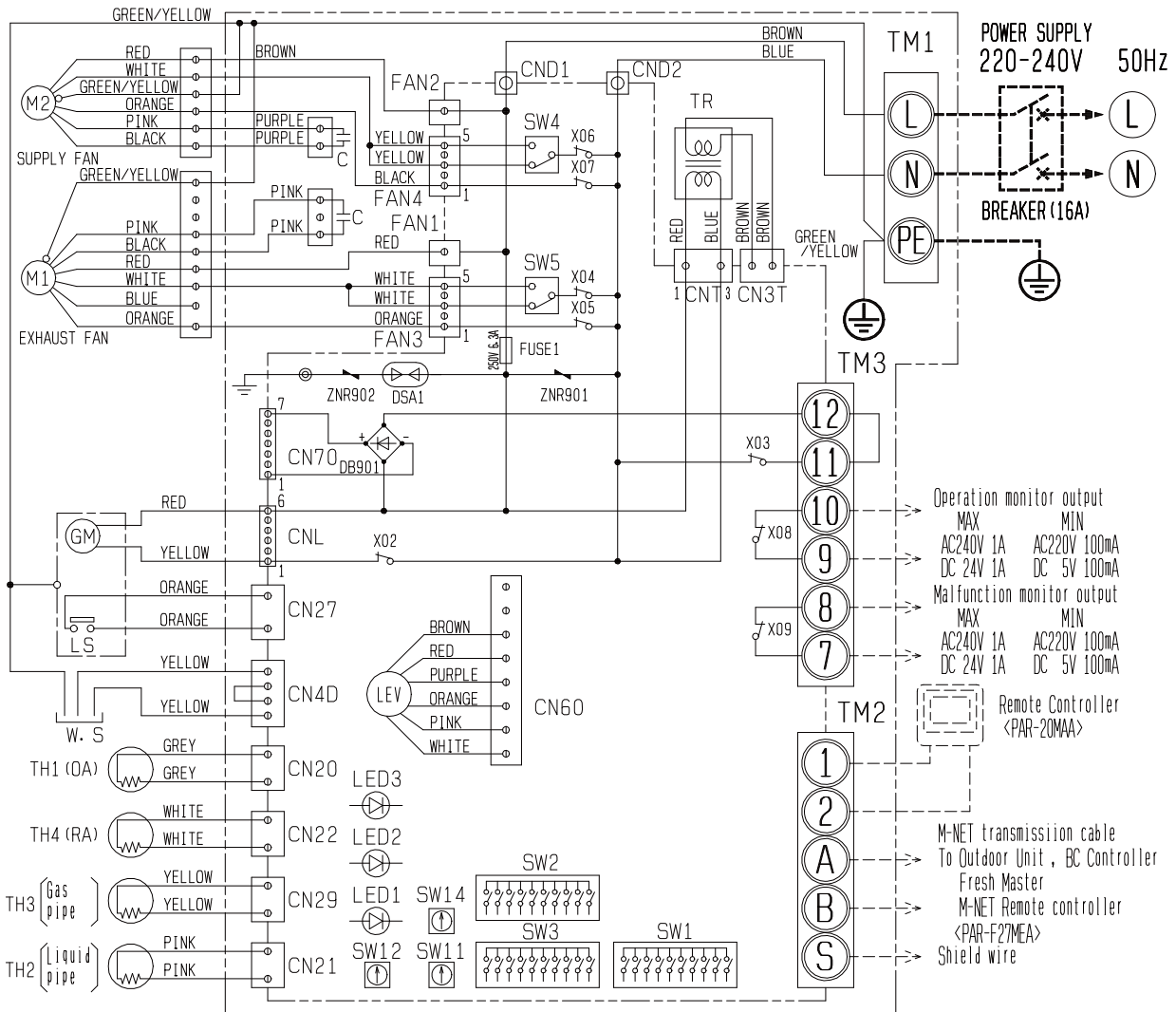


Model	External dimension			Ceiling suspension fixture pitch			Duct connection flange			Duct pitch				Humidification			Inspection opening	Flare		
	A	B	C	D	E	F	Nominal diameter	G	H	J	K	L	M	N	P	Q		S	T	U
GUF-50RD3 ① GUF-50RD3 ② GUF-50RD3 ③ GUF-50RD3 ④	1288	1016	317	1185	1048	22	200	158.5	192	208	745	372.5	435	124	347	135	266	450	ø12.7	ø6.35

Unit (mm)

5. Electrical wiring diagram

GUF-50RD3 ①, GUF-50RD3 ②, GUF-50RD3 ③, GUF-50RD3 ④



- NOTE
1. TM1, TM2, TM3 shown in dotted lines are field work.
 2. Be sure to connect the grounding wire.
 3. Breakers should be provided by the customer.
 4. MARK :indicates terminal block, :connector
 :board insertion connector or fastening connector of control board.

■Warning
 Before obtaining access to terminals, all supply circuits must be disconnected.

■Symbol explanation

Symbol	Name	Symbol	Name	Symbol	Name
M1	Fan motor(exhaust)	TM1	Terminal block(power supply)	1, 2	Remote controller terminal
M2	Fan motor(supply)	TM2	Terminal block(transmission)	A, B	M-NET transmission terminal
C	Capacitor	TM3	Terminal block(humidistat, monitor)	S	Shield
W. S	Water sensor	SW1	Switch(function selection)	CND1, CND2	Connector(power supply)
TH1	Thermistor(outdoor air temp. detection)	SW2	Switch(capacity code setting)	X02-X09	Relay
TH2	Thermistor(pipe temp. detection/liquid)	SW3	Switch(function selection)	TR	Transformer
TH3	Thermistor(pipe temp. detection/gas)	SW4	Switch	GM	Damper motor
TH4	Thermistor(room air temp. detection)	SW5	Switch	LS	Limit switch
LEV	Electronic linear expansion valve	SW11	Switch(1st digit address set)	LED1	Power supply monitor
		SW12	Switch(2nd digit address set)	LED2	MA remote controller
		SW14	Switch(branch NO. set)	LED3	M-NET Power supply monitor

6. Overhaul procedure

■ Work precautions

- When touching the electric components such as circuit boards and fan motors, do not touch the components for more than 5 minutes after power-off, and then start working.
- When servicing, always keep proper footing.
- When servicing, make sure that the power cord is pulled out of the outlet, or the ground fault circuit interrupter is off if no mains connector is built in the product, so as no electrical shock or injury to occur. Pay sufficient attention when working on the product.
- Always connect the power wire properly.
- After completing repairs, confirm that the main unit operates properly.
- Always wear gloves when servicing.

* Part names used in the following text correspond to those listed in the parts catalog.

(1) Turning Power Off

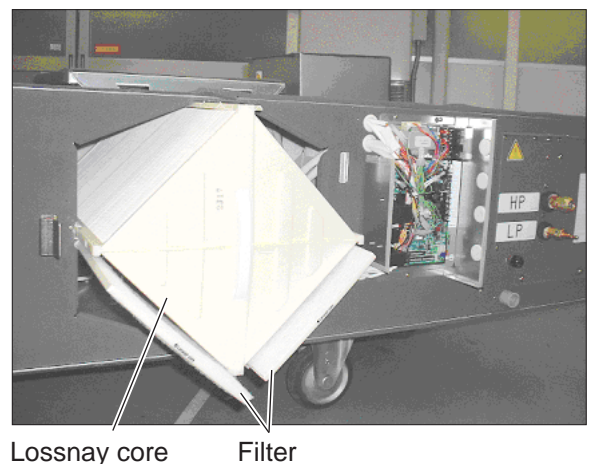
- ① Shut down the unit.
- ② Turn off the ground fault circuit interrupter on the distribution board.

(2) Fan Section

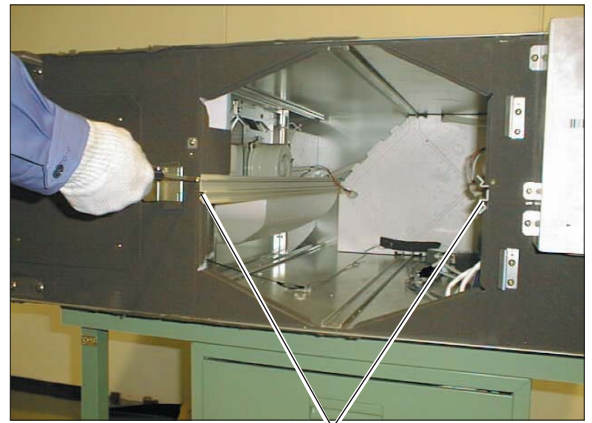
- ① Remove the cover fixing special screw.
- ② Pull back the hinge. Open the maintenance cover and lift it off of the fix piece.



- ③ Remove the filters from the unit.
- ④ Remove the Lossnay cores from the unit.



- ⑤ Remove the screws from the core guides, and remove the core guides.



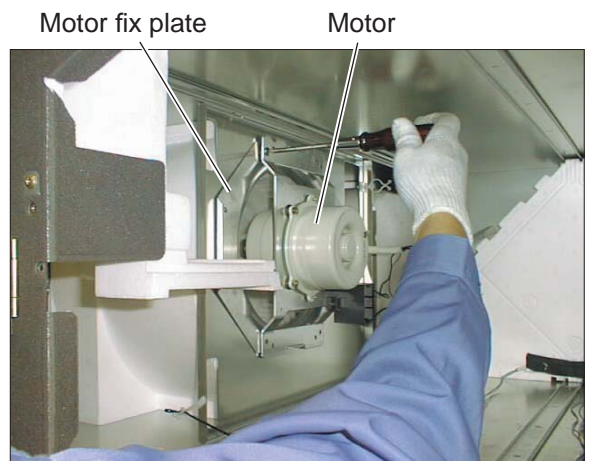
Core guide

- ⑥ Remove the separators from the fan parts.
⑦ Disconnect the connections for the motor lead wire.



Separator

- ⑧ Remove the screws from the motor fix plate.



Motor fix plate

Motor

- ⑨ Remove the fan assembly.



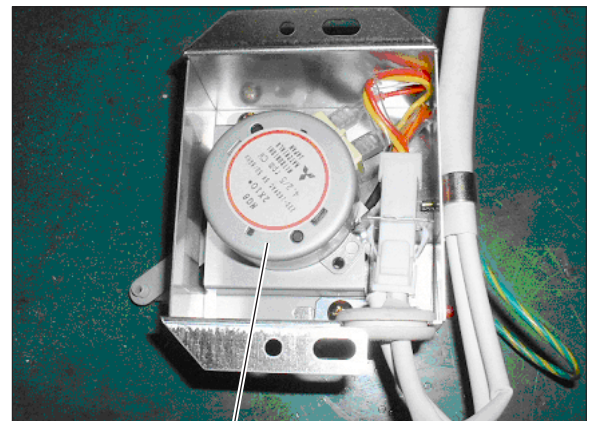
Fan assembly

(3) Damper Motor Section

- ① Remove the two screws out from the damper motor cover.

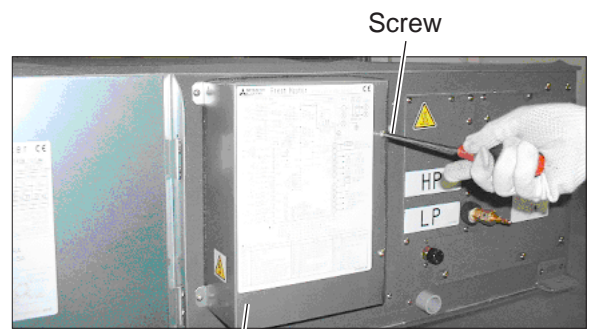


- ② Take the damper motor out of the cover.

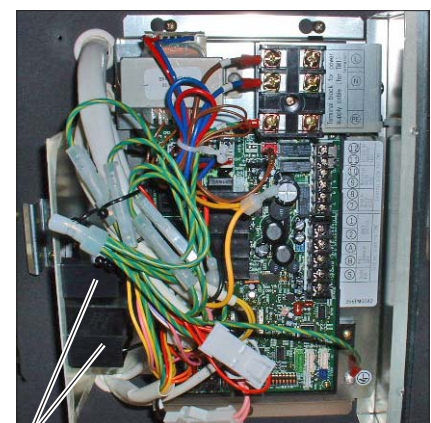


(4) Circuit Board Section

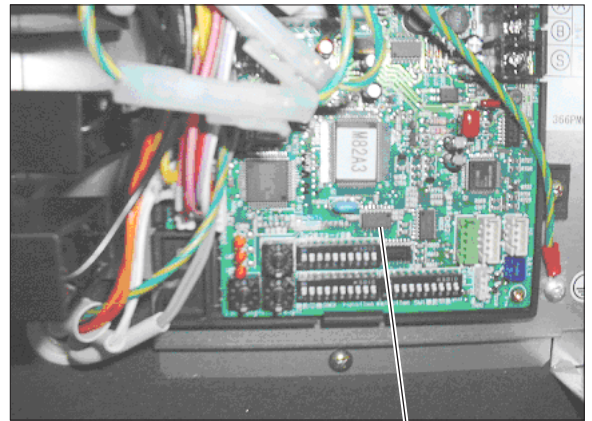
- ① Remove the four screws from the control cover.



- ② Remove the two screws from the capacitors.



- ③ Remove all lead wires connected to the circuit board.
- ④ Take the circuit board out.



Circuit board

(5) Humidifier Section

* Humidifier function is not available. This product is not equipped with the humidifying elements.

- ① Remove the six screws to remove the humidifier cover.



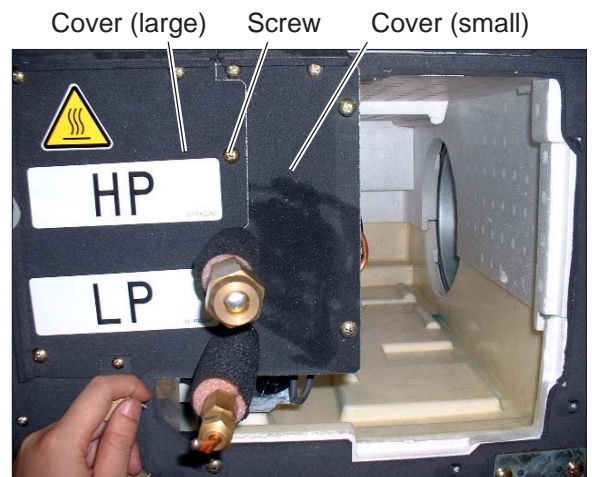
- ② Remove the humidifier cover (IN).



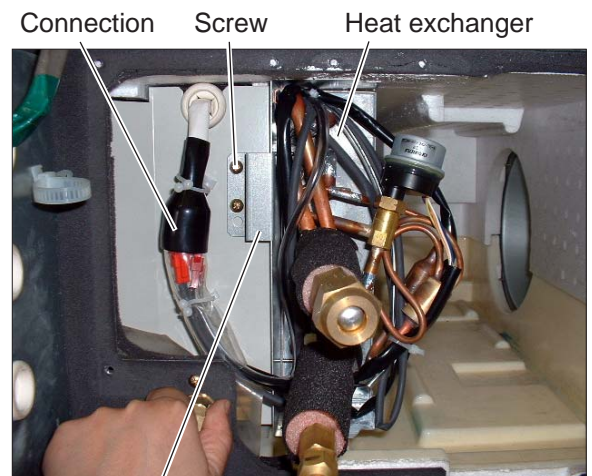
(6) Water Sensor Section

* This product is not equipped with the solenoid valve and the water supply pipe.

- ① Remove the nine screws to remove the cover (large) and cover (small).

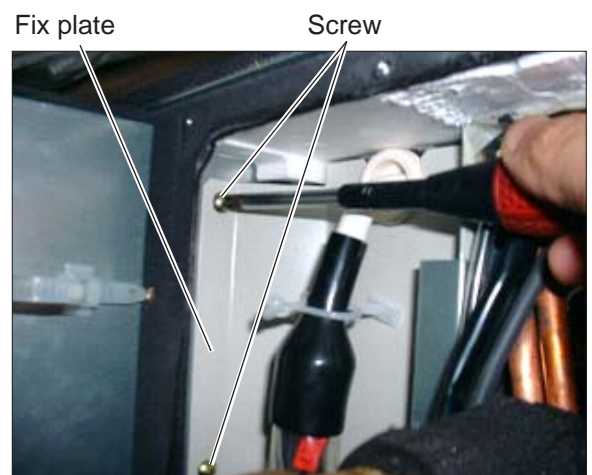


- ② Disconnect the connections for the thermistor lead wires and linear expansion valve lead wire.
- ③ Remove the two screws to remove the heat exchanger fixing plate.
- ④ Remove the heat exchanger from the unit.

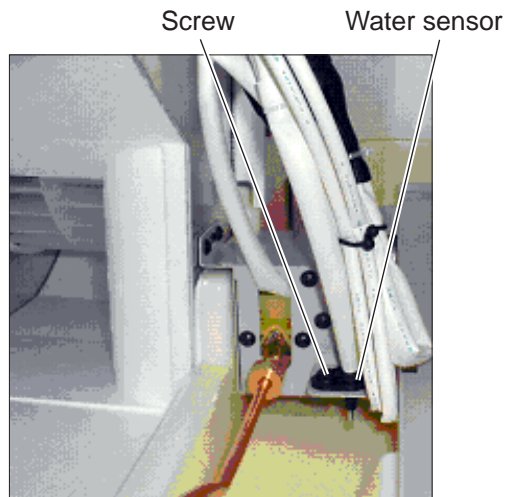


Heat exchanger fixing plate

- ⑤ Remove the two screws to remove the fix plate.



⑥ Remove the screws to remove the water sensors.



The hole at the fixing position of the water sensor plate is no longer visible.

Except for GUF-50RD3 ④

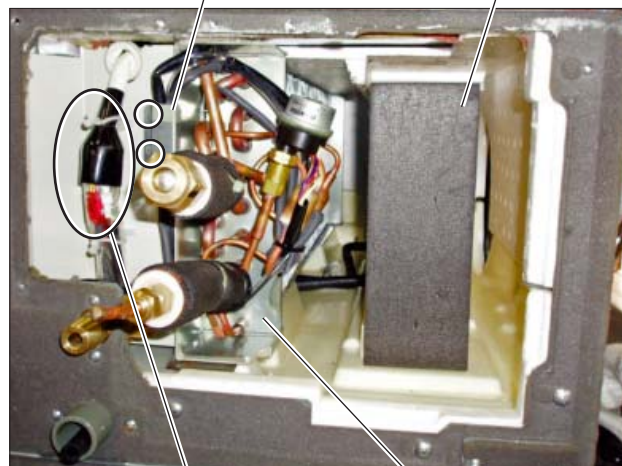
* When replacing the heat exchanger, replace the covers (large, and small) with the supplied maintenance covers (side, left, and right) as follows.

(7) Heat Exchanger (for coolant) Section

- ① Remove the covers (large, and small) and the humidifier cover. Then, remove the humidifier cover (IN).
- ② Disconnect the lead wire connections from the heat exchanger.
(Lead wire for the linear expansion valve (LEV), and lead wires for the thermistors of liquid and gas pipes)
- ③ Remove the screws (two PTT screws 4x8: ○). Remove the heat exchanger fixing plate, and then replace the heat exchanger.

* Humidifier function is not available. This product is not equipped with the humidifying elements.

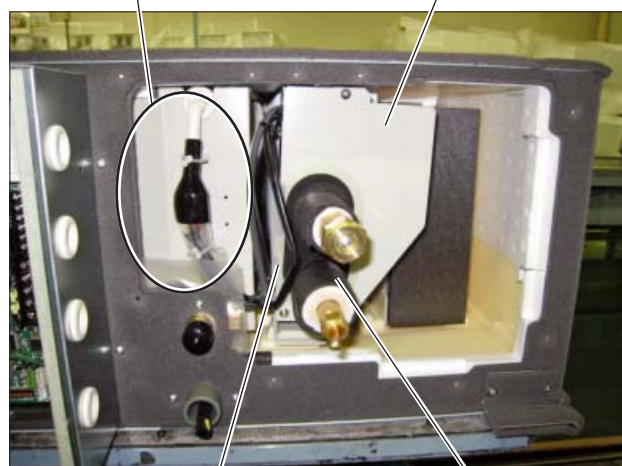
Heat exchanger fixing plate * Humidifying element



Lead wire connection Heat exchanger

- ④ After inserting the new heat exchanger in the unit, connect the lead wire connections for the linear expansion valve (LEV), and for the thermistors of liquid and gas pipes (removed as shown in (7) ②).

Lead wire connection Water stop (steel plate)



Water stop (resin) Heat exchanger

- ⑤ Hold the water stop (resin) with your fingers, and hold the lead wires by the heat exchanger fixing plate (removed as shown in (7) ③). Hook the heat exchanger fixing plate on the slit of the heat exchanger. Tighten the screws (two PTT screws 4x8), and secure the heat exchanger to the unit. Set the lead wires u-shaped as shown in the following picture, and secure the lead wires with the lead clips so as not to move the lead wires toward the maintenance cover side.

Assembly precaution

If the lead wires are not secured, condensed water may run down the read wires, and result in water leak.



- ⑥ Tighten the screws (two PTT screws 5x10) to attach the maintenance cover (right).
 ⑦ Tighten the screws (three PTT screws 5x10) to attach the maintenance cover (left).
 ⑧ Tighten the screws (four PTT screws 5x10) to attach the maintenance cover (side).



⑨ Attach the humidifier cover (IN).



Humidifier cover (IN)

⑩ Tighten the screws (six PTT screws 5x10: ○) to attach the humidifier cover.



Humidifier cover

* When assembling

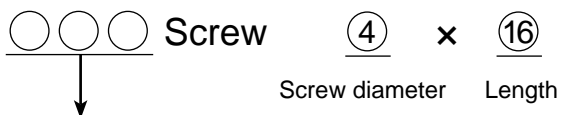
- When reassembling the unit, assemble it in the reverse order of disassembly.
- Always make sure that the unit works properly when reassembled.

7. Parts catalog

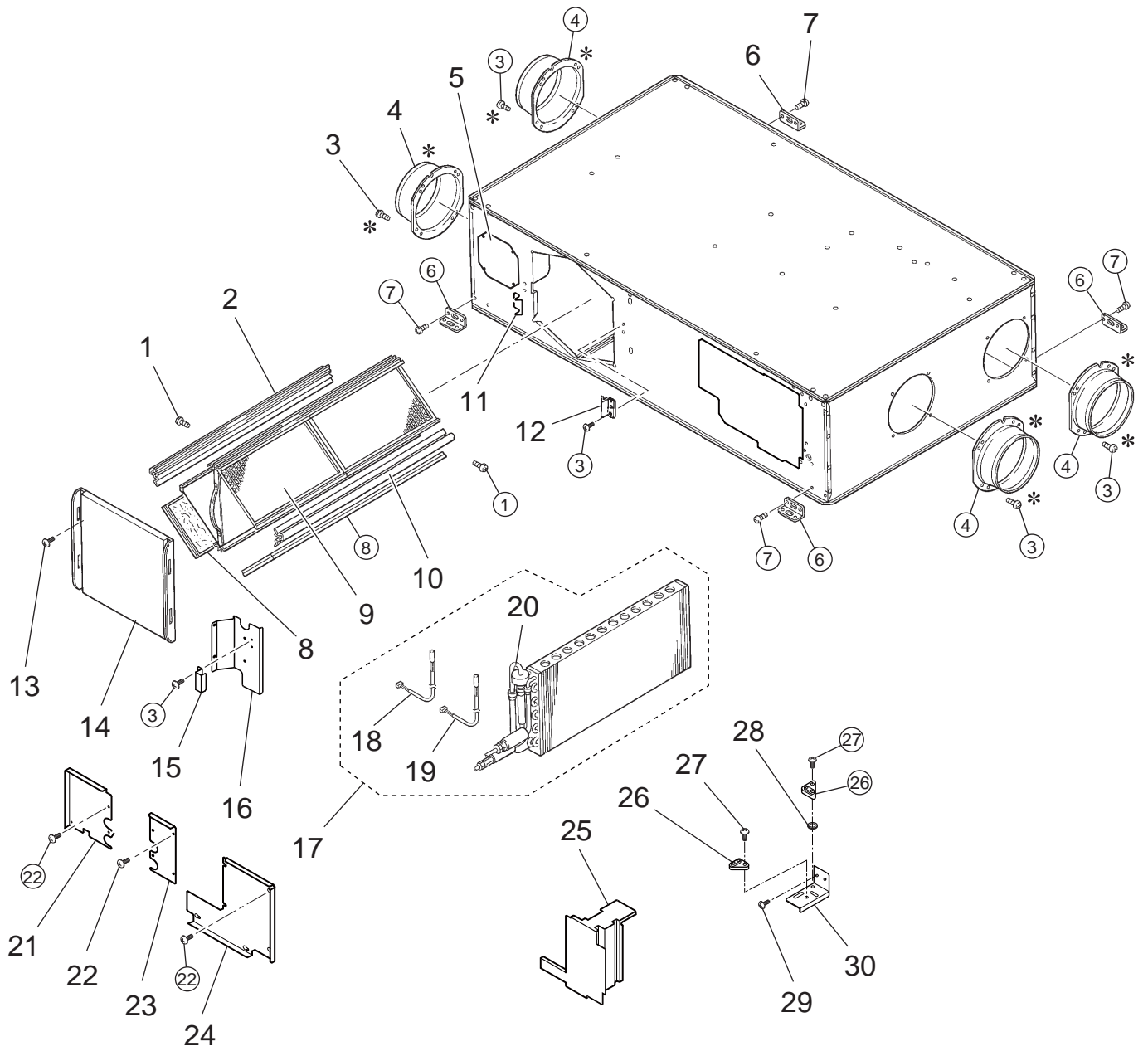
Please note the following when using the parts catalog.

1. When ordering parts, always indicate the part number, part name, and the number of parts required.
2. Parts are not always available, and it may take time for you to receive them.
3. There may be specification improvements.
4. Specifications are correct as of May 2010.
5. Parts marked Δ are critical for safety. To maintain safety and performance, always replace these parts with the parts prescribed.
6. The numbers that are circled in the exploded view are the same as the reference number for the part being indicated.

Description of screw abbreviations



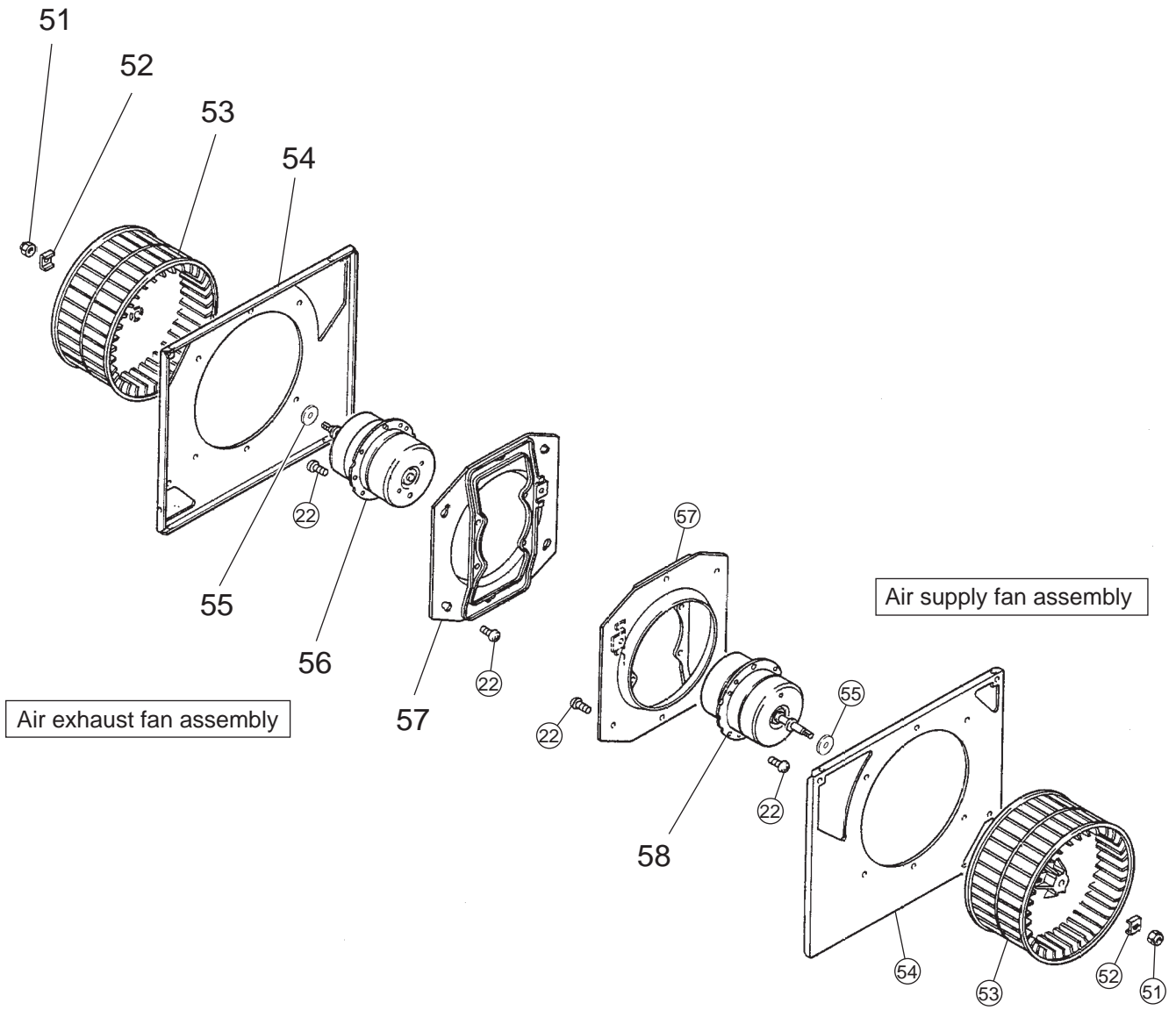
Abbreviation	Description
PC screw	Cross recess flat head machine screw
PRC screw	Cross recess oval head machine screw
PP screw	Cross recess pan head machine screw
SW · PP screw	Cross recess pan head screw with spring washer
PPT screw	Cross recess tapping screw
PCT screw	Cross recess flat head tapping screw
PTT screw	Cross recess truss head tapping screw
PT screw	Cross recess truss head machine screw
SET screw	Slotted head stop screw
SQ · SET screw	Square head stop screw
P · SET screw	Pan head stop screw
PMT screw	Primer truss head screw
HS · SET screw	Hexagon head stop screw
P · R · W screw	Cross recess round wood screw
P · C · W screw	Cross recess flat head wood screw
P · R · C · W screw	Cross recess round and flat wood screw
R · W screw	Slotted round wood screw
PW · PP screw	Cross recess pan head screw with small washer
SW-PW · PP screw	Cross recess pan head machine screw with spring washer and flat washer



* shows accessory parts.

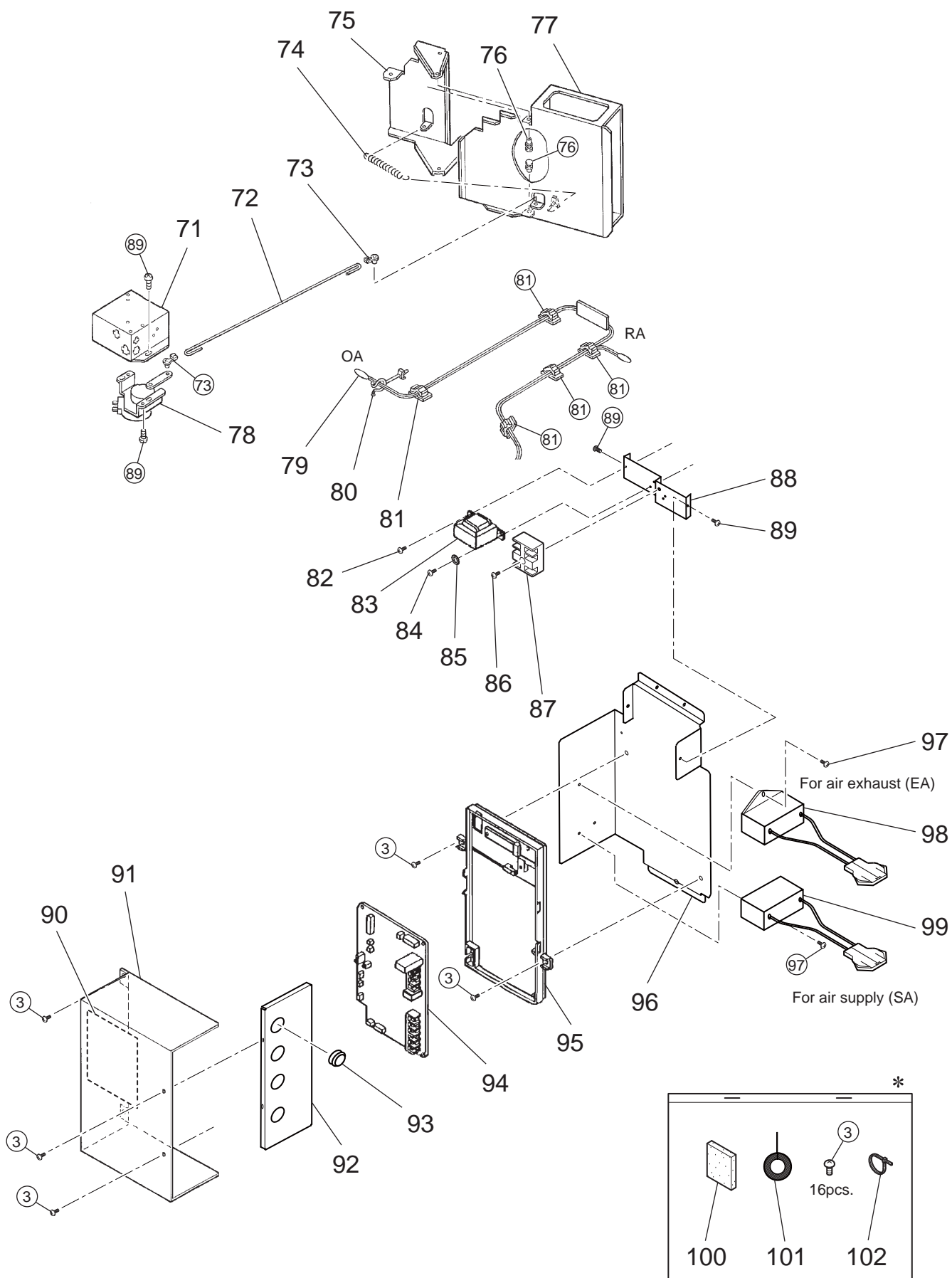
Model GUF-50RD3 

No.	Parts No.	Name of part	Q'ty pcs/unit	Critical for safety	Remarks	Price
1.	H00 000 488	PTT screw 4×12	2			
2.	R50 216 381	Core guide	1			
3.	H00 000 487	PTT screw 4×8	49			
4.	R50 028 610	Flange	4			
5.	R50 351 708	Cover	2			
6.	R50 095 380	Hanger	4			
7.	H00 000 244	PT screw 6×12	15			
8.	Y50 062 718	Filter	2		▲	
9.	R50 478 711	Lossnay core	2		▲	
10.	R50 478 382	Core guide	1			
11.	R50 466 344	Hinge	1			
12.	Y50 029 712	Fix piece	1			
13.	M34 074 017	Special screw 4×11	1			
14.	X50 002 707	Maintenance cover	1			
15.	R50 429 700	Fix piece	1			
16.	R50 429 699	Fix plate	1			
17.	R50 472 699	Heat exchanger	1		▲	
18.	R40 632 936	Thermistor	1		▲	
19.	R40 647 340	Thermistor	1		▲	
20.	R50 474 737	Linear expansion valve	1		▲	
21.	R50 429 691	Cover(large)	1			
22.	H00 189 007	PTT screw 5×10	31			
23.	R50 429 697	Cover(small)	1			
24.	R50 429 698	Humidifier cover	1			
25.	R50 429 486	Humidifier cover(IN)	1			
26.	M45 280 707	Water sensor	2		▲	
27.	M35 282 045	Special screw 4×12	2			
28.	K81 602 035	Special washer	1			
29.	H00 260 045	PTT screw 4×8	5			
30.	Y55 007 692	Water sensor plate	1			



Model GUF-50RD3 1

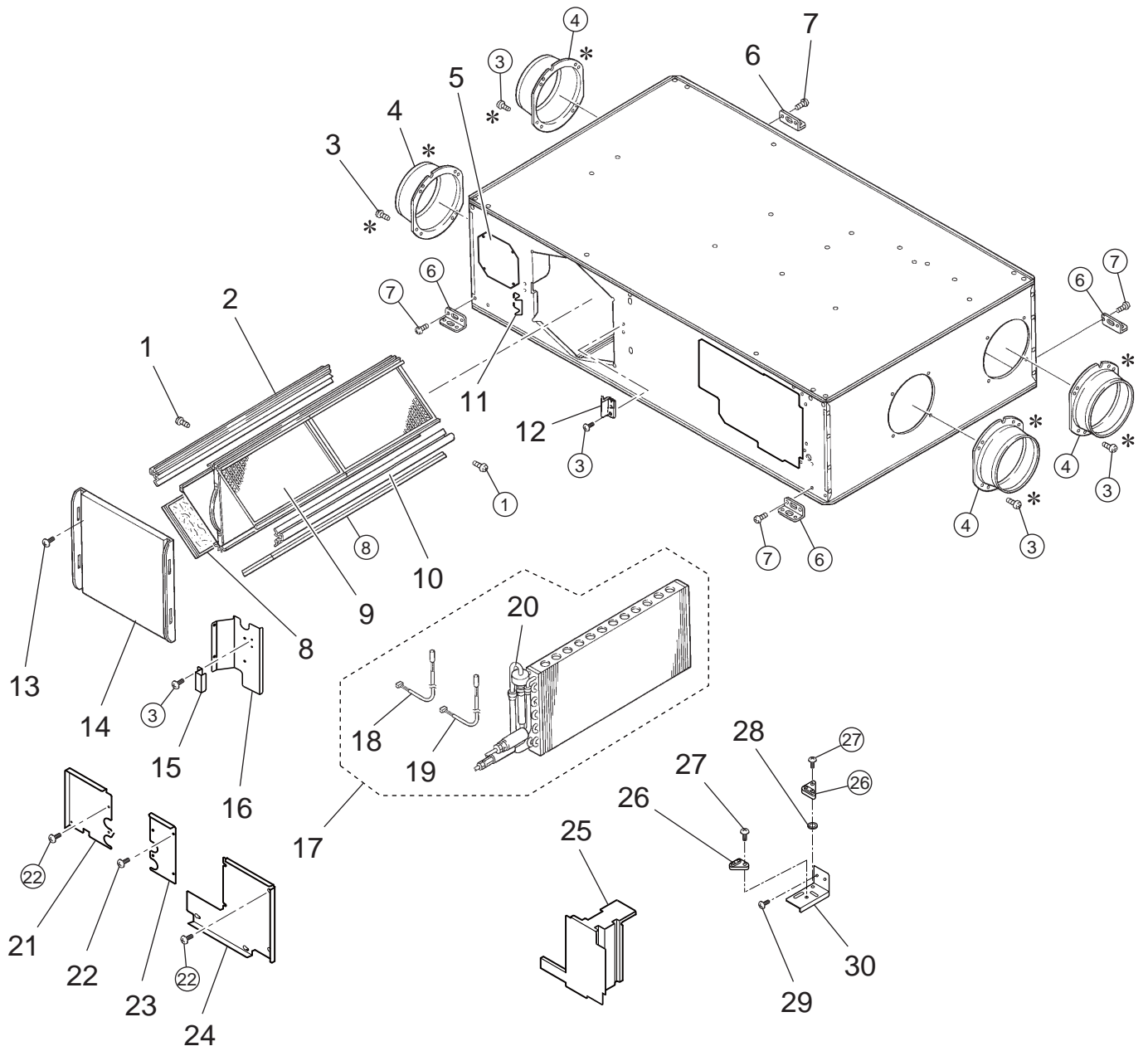
No.	Parts No.	Name of part	Q'ty pcs/unit	Critical for safety	Remarks	Price
51.	R50 331 067	Special nut(8)	2		Left-handed	
52.	M34 398 077	Tab washer	2			
53.	R50 351 480	Centrifugal fan	2	▲	φ 220	
54.	R50 478 707	Fan base	2			
55.	M34 706 465	Special washer	2		φ 10	
56.	Y50 062 454	Motor	1	▲		
57.	R50 351 713	Motor fix plate	2			
58.	Y55 003 452	Motor	1	▲		



* shows accessory parts.

Model GUF-50RD3 1

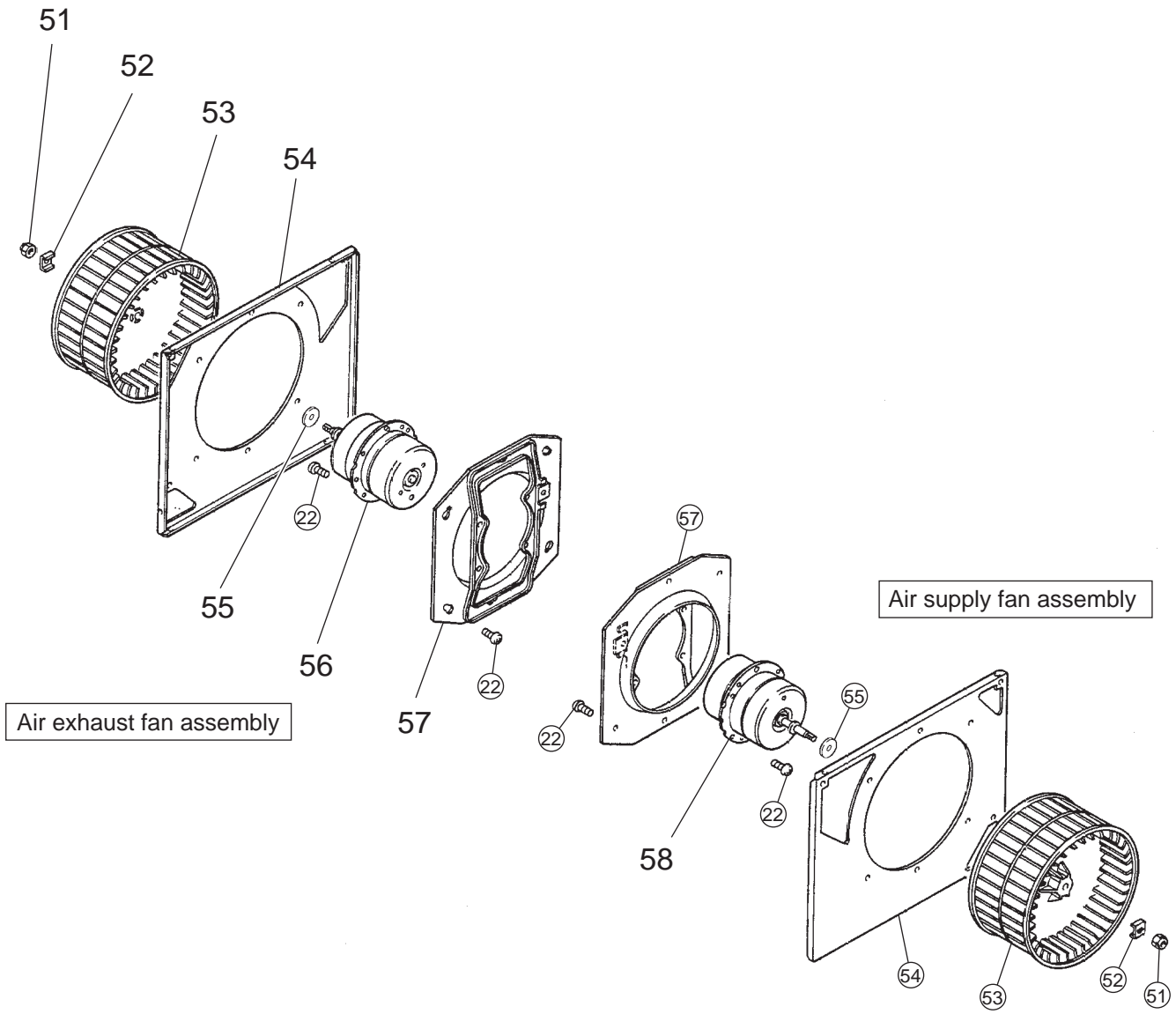
No.	Parts No.	Name of part	Q'ty pcs/unit	Critical for safety	Remarks	Price
71.	Y50 061 693	Damper motor cover	1			
72.	R50 232 150	Rod	1			
73.	R50 054 225	Special bush	2			
74.	R50 069 156	Pull spring	1			
75.	R50 472 716	Damper support	1			
76.	M31 234 089	Special bush	2			
77.	R50 472 715	Damper	1			
78.	Y50 061 260	Damper motor (GM)	1	▲	AC220·240V	
79.	Y55 003 216	Thermistor	1	▲		
80.	D41 093 224	Cord clamper	1			
81.	R50 399 224	Cord clip	5			
82.	H00 000 349	PT screw 4×8	1			
83.	Y55 001 217	Transformer	1	▲		
84.	H00 011 008	PT screw 4×8(BS)	3			
85.	H00 013 076	Lock washer(4)	3			
86.	H00 141 005	PPT screw 4×20	1			
87.	M13 100 242	Terminal block	1	▲	3P	
88.	R50 429 701	Terminal fix plate	1			
89.	H00 312 007	PTT screw 4×6	36			
90.	Y55 009 367	Wiring diagram	1			
91.	R50 429 693	Control cover	1			
92.	R50 430 693	Side plate	1			
93.	R50 351 225	Cord bush	4			
94.	R50 472 171	Circuit board	1	▲	FU-M05-D1	
95.	R50 327 730	Circuit fix plate(upper)	1			
96.	R50 429 695	Circuit fix plate(lower)	1			
97.	H00 000 332	PTT screw 4×10	6			
98.	Y55 007 235	Capacitor	1	▲	4.0 μF·440VAC	
99.	Y55 003 235	Capacitor	1	▲	4.0 μF·440VAC	
100.	R50 530 699	Separator	2			
101.	R50 530 700	Separator	2			
102.	R50 530 228	Cord band	6			



* shows accessory parts.

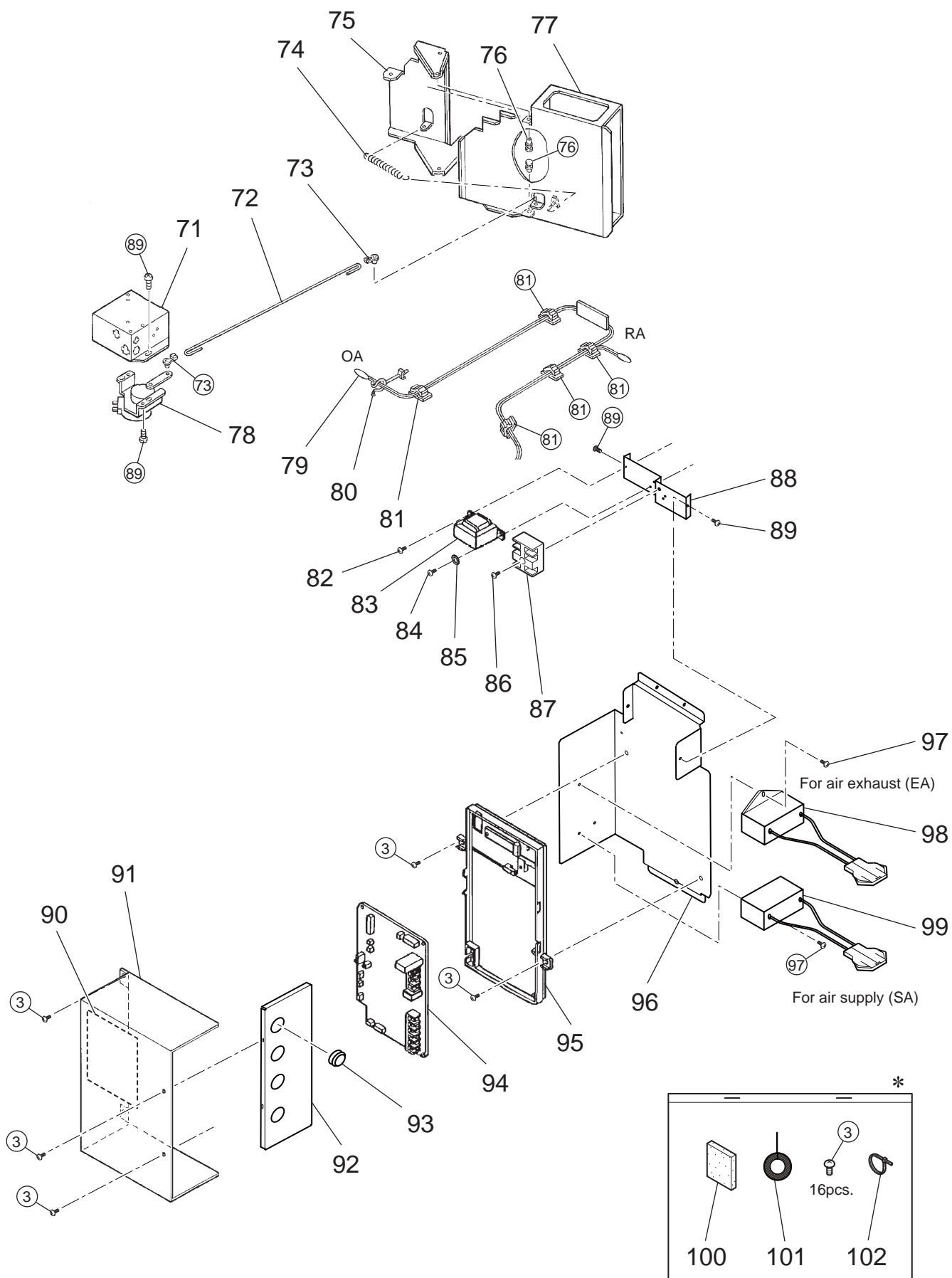
Model GUF-50RD3②

No.	Parts No.	Name of part	Q'ty pcs/unit	Critical for safety	Remarks	Price
1.	H00 000 488	PTT screw 4×12	2			
2.	R50 216 381	Core guide	1			
3.	H00 000 487	PTT screw 4×8	49			
4.	R50 028 610	Flange	4			
5.	R50 351 708	Cover	2			
6.	R50 095 380	Hanger	4			
7.	H00 000 244	PT screw 6×12	15			
8.	Y50 062 718	Filter	2		▲	
9.	R50 478 711	Lossnay core	2		▲	
10.	R50 478 382	Core guide	1			
11.	R50 466 344	Hinge	1			
12.	Y50 029 712	Fix piece	1			
13.	M34 074 017	Special screw 4×11	1			
14.	X50 002 707	Maintenance cover	1			
15.	R50 429 700	Fix piece	1			
16.	R50 429 699	Fix plate	1			
17.	R50 472 699	Heat exchanger	1		▲	
18.	R40 632 936	Thermistor	1		▲	
19.	R40 647 340	Thermistor	1		▲	
20.	R50 474 737	Linear expansion valve	1		▲	
21.	R50 429 691	Cover(large)	1			
22.	H00 189 007	PTT screw 5×10	31			
23.	R50 429 697	Cover(small)	1			
24.	R50 429 698	Humidifier cover	1			
25.	R50 429 486	Humidifier cover(IN)	1			
26.	M45 280 707	Water sensor	2		▲	
27.	M35 282 045	Special screw 4×12	2			
28.	K81 602 035	Special washer	1			
29.	H00 260 045	PTT screw 4×8	5			
30.	Y55 007 692	Water sensor plate	1			



Model GUF-50RD3 ②

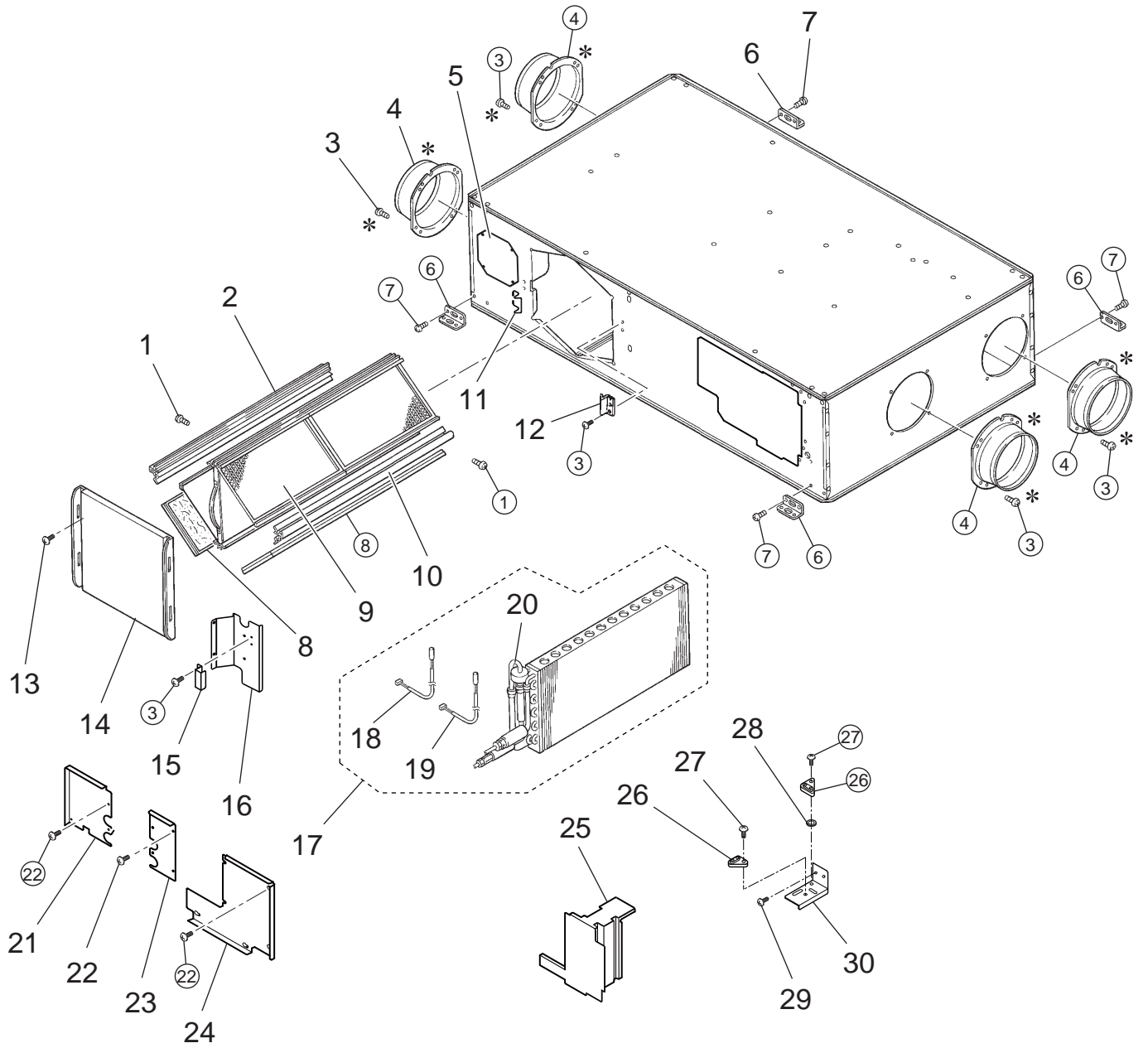
No.	Parts No.	Name of part	Q'ty pcs/unit	Critical for safety	Remarks	Price
51.	R50 331 067	Special nut(8)	2		Left-handed	
52.	M34 398 077	Tab washer	2			
53.	R50 351 480	Centrifugal fan	2	▲	φ 220	
54.	R50 478 707	Fan base	2			
55.	M34 706 465	Special washer	2		φ 10	
56.	Y50 062 454	Motor	1	▲		
57.	R50 351 713	Motor fix plate	2			
58.	Y55 003 452	Motor	1	▲		



* shows accessory parts.








Model GUF-50RD3②

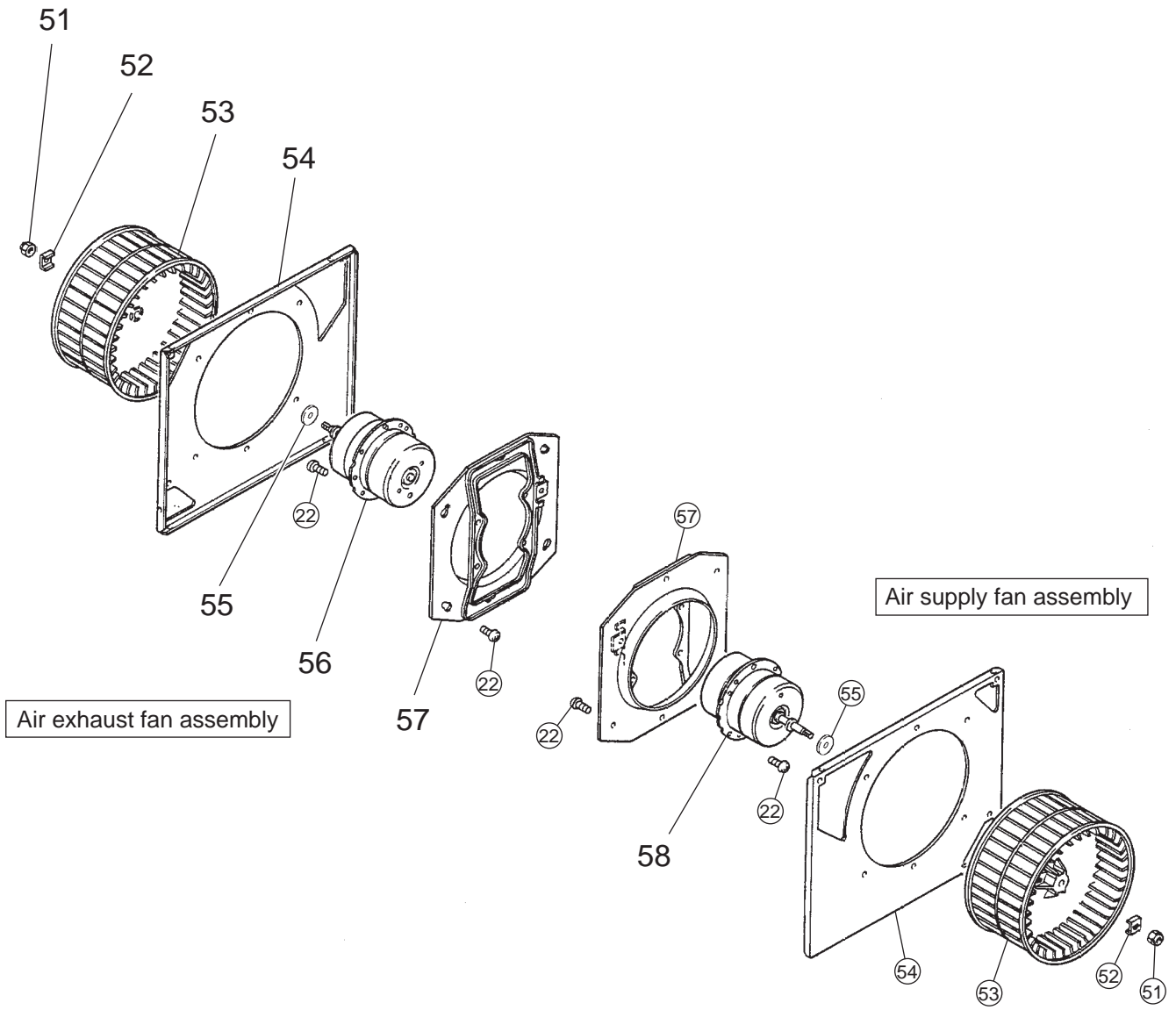
No.	Parts No.	Name of part	Q'ty pcs/unit	Critical for safety	Remarks	Price
71.	Y50 061 693	Damper motor cover	1			
72.	R50 232 150	Rod	1			
73.	R50 054 225	Special bush	2			
74.	R50 069 156	Pull spring	1			
75.	R50 472 716	Damper support	1			
76.	M31 234 089	Special bush	2			
77.	R50 472 715	Damper	1			
78.	Y50 061 260	Damper motor (GM)	1	▲	AC220·240V	
79.	Y55 003 216	Thermistor	1	▲		
80.	D41 093 224	Cord clamper	1			
81.	R50 399 224	Cord clip	5			
82.	H00 000 349	PT screw 4×8	1			
83.	Y55 001 217	Transformer	1	▲		
84.	H00 011 008	PT screw 4×8(BS)	3			
85.	H00 013 076	Lock washer(4)	3			
86.	H00 141 005	PPT screw 4×20	1			
87.	M13 100 242	Terminal block	1	▲	3P	
88.	R50 429 701	Terminal fix plate	1			
89.	H00 312 007	PTT screw 4×6	36			
90.	Y55 009 367	Wiring diagram	1			
91.	R50 429 693	Control cover	1			
92.	R50 430 693	Side plate	1			
93.	R50 351 225	Cord bush	4			
94.	R50 472 171	Circuit board	1	▲	FU-M05-D1	
95.	R50 327 730	Circuit fix plate(upper)	1			
96.	R50 429 695	Circuit fix plate(lower)	1			
97.	H00 000 332	PTT screw 4×10	6			
98.	Y55 007 235	Capacitor	1	▲	4.0 μF·440VAC	
99.	Y55 003 235	Capacitor	1	▲	4.0 μF·440VAC	
100.	R50 530 699	Separator	2			
101.	R50 530 700	Separator	2			
102.	R50 530 228	Cord band	6			



* shows accessory parts.

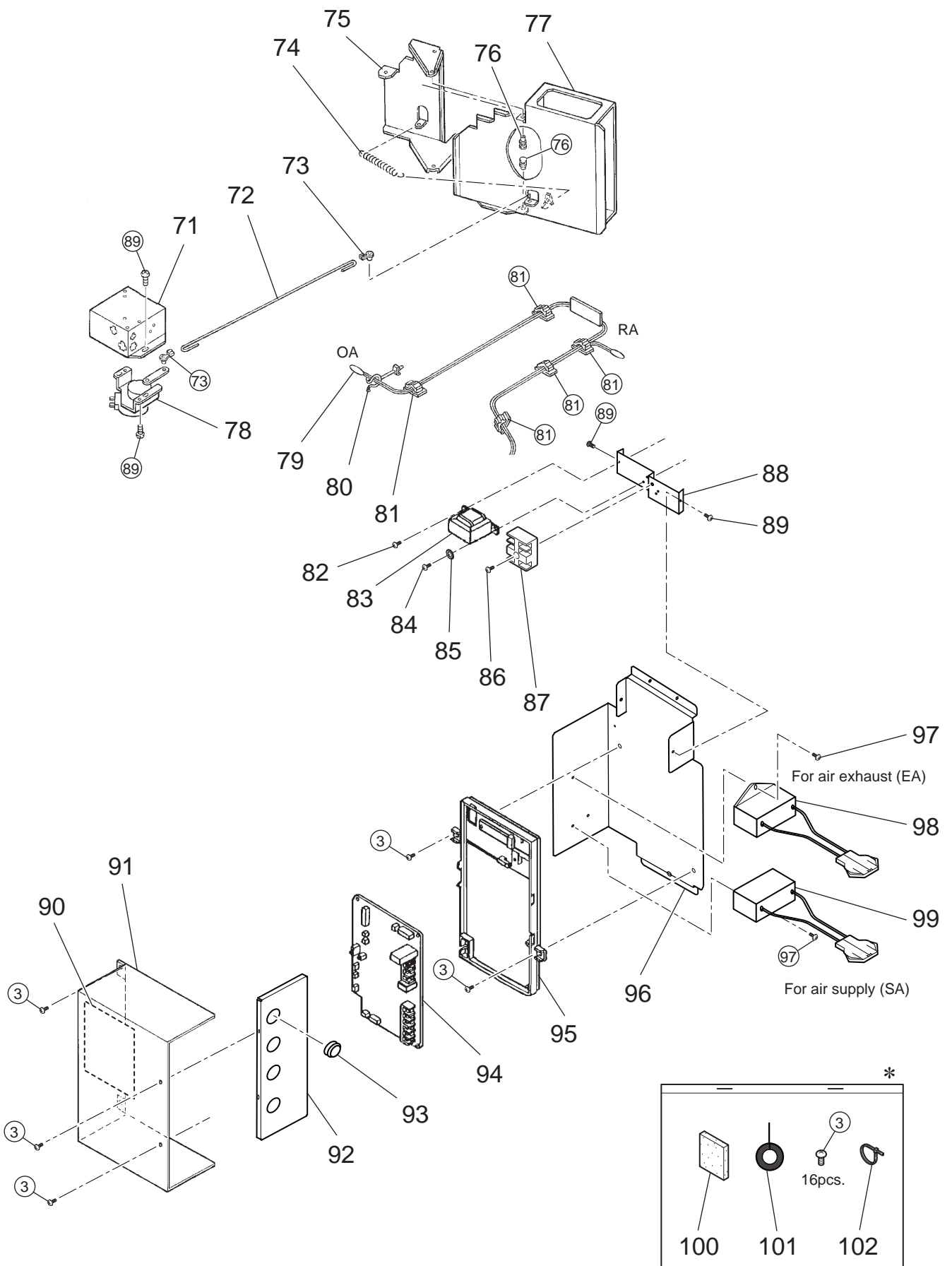
Model GUF-50RD3 

No.	Parts No.	Name of part	Q'ty pcs/unit	Critical for safety	Remarks	Price
1.	H00 000 488	PTT screw 4×12	2			
2.	R50 216 381	Core guide	1			
3.	H00 000 487	PTT screw 4×8	49			
4.	R50 028 610	Flange	4			
5.	R50 351 708	Cover	2			
6.	R50 095 380	Hanger	4			
7.	H00 000 244	PT screw 6×12	15			
8.	Y50 062 718	Filter	2			
9.	R50 478 711	Lossnay core	2			
10.	R50 478 382	Core guide	1			
11.	R50 466 344	Hinge	1			
12.	Y50 029 712	Fix piece	1			
13.	M34 074 017	Special screw 4×11	1			
14.	X50 002 707	Maintenance cover	1			
15.	R50 429 700	Fix piece	1			
16.	R50 429 699	Fix plate	1			
17.	R50 472 699	Heat exchanger	1			
18.	R40 632 936	Thermistor	1			
19.	R40 647 340	Thermistor	1			
20.	R50 474 737	Linear expansion valve	1			
21.	R50 429 691	Cover(large)	1			
22.	H00 189 007	PTT screw 5×10	31			
23.	R50 429 697	Cover(small)	1			
24.	R50 429 698	Humidifier cover	1			
25.	R50 429 486	Humidifier cover(IN)	1			
26.	M45 280 707	Water sensor	2			
27.	M35 282 045	Special screw 4×12	2			
28.	K81 602 035	Special washer	1			
29.	H00 260 045	PTT screw 4×8	5			
30.	Y55 007 692	Water sensor plate	1			



Model GUF-50RD3 ③

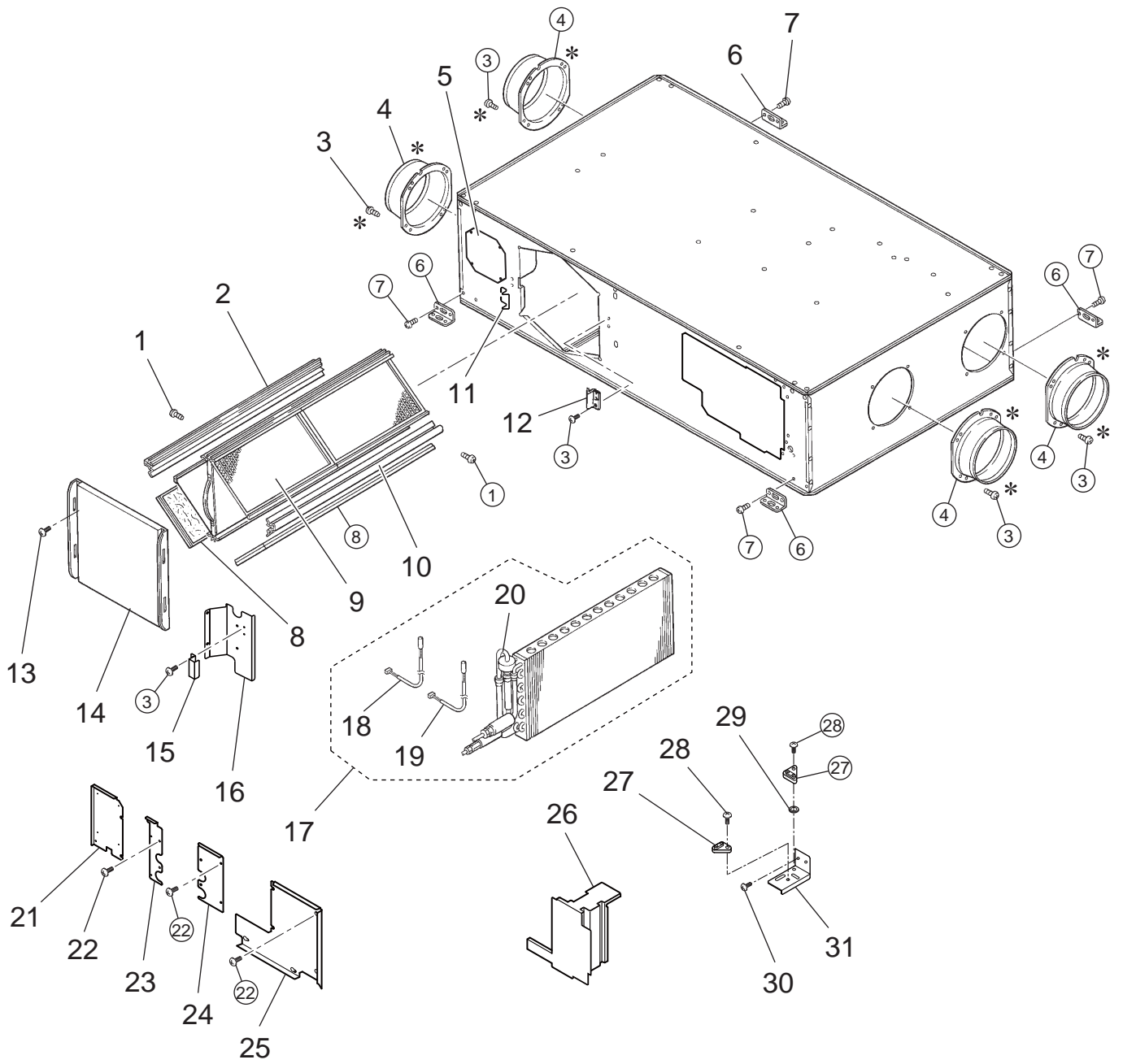
No.	Parts No.	Name of part	Q'ty pcs/unit	Critical for safety	Remarks	Price
51.	R50 331 067	Special nut(8)	2		Left-handed	
52.	M34 398 077	Tab washer	2			
53.	R50 351 480	Centrifugal fan	2	▲	φ 220	
54.	R50 478 707	Fan base	2			
55.	M34 706 465	Special washer	2		φ 10	
56.	Y50 062 454	Motor	1	▲		
57.	R50 351 713	Motor fix plate	2			
58.	Y55 003 452	Motor	1	▲		



* shows accessory parts.

Model GUF-50RD3 

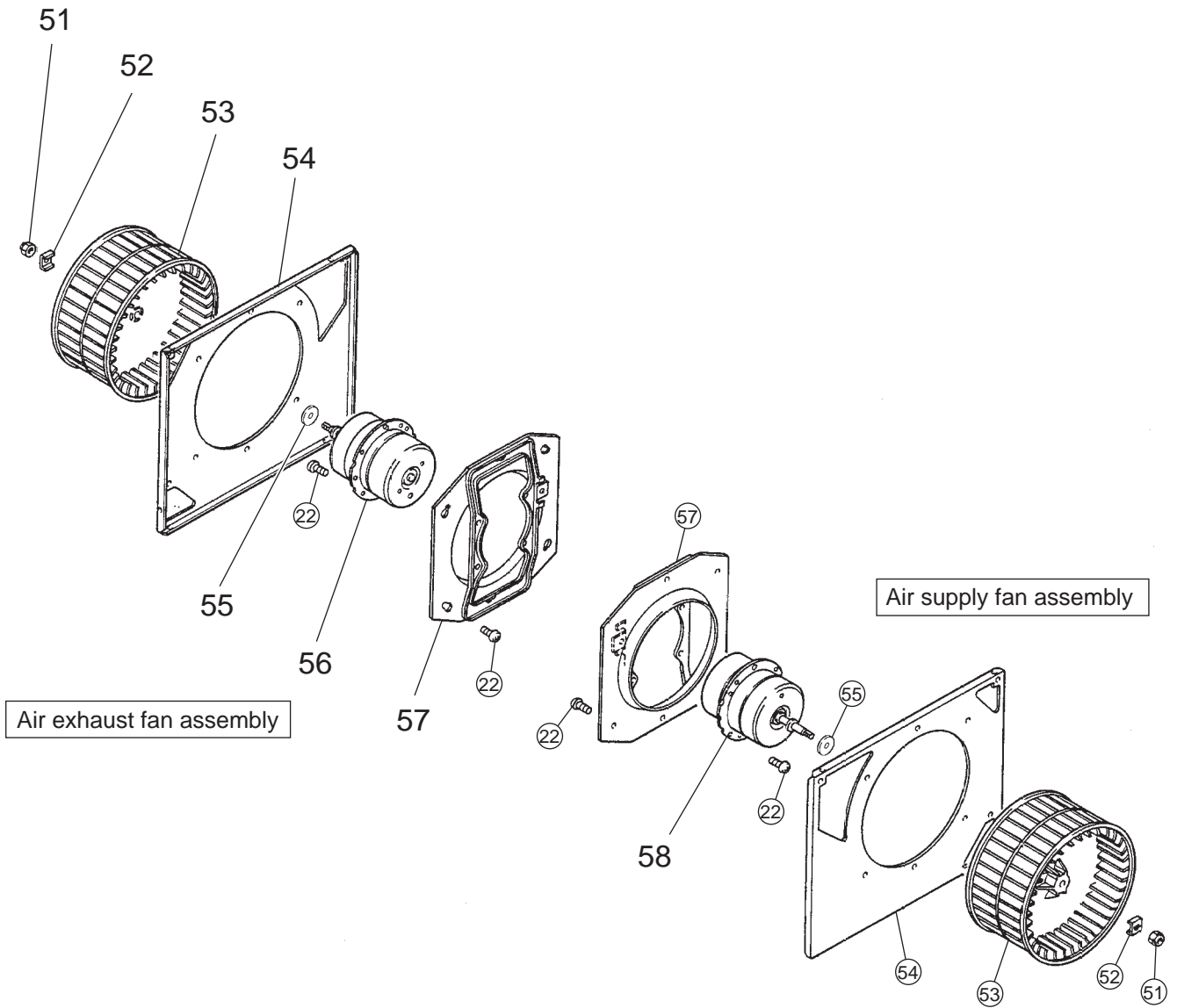
No.	Parts No.	Name of part	Q'ty pcs/unit	Critical for safety	Remarks	Price
71.	Y50 061 693	Damper motor cover	1			
72.	R50 232 150	Rod	1			
73.	R50 054 225	Special bush	2			
74.	R50 069 156	Pull spring	1			
75.	R50 472 716	Damper support	1			
76.	M31 234 089	Special bush	2			
77.	R50 472 715	Damper	1			
78.	Y50 061 260	Damper motor (GM)	1	▲	AC220·240V	
79.	Y55 003 216	Thermistor	1	▲		
80.	D41 093 224	Cord clamper	1			
81.	R50 399 224	Cord clip	5			
82.	H00 000 349	PT screw 4×8	1			
83.	Y55 001 217	Transformer	1	▲		
84.	H00 011 008	PT screw 4×8(BS)	3			
85.	H00 013 076	Lock washer(4)	3			
86.	H00 141 005	PPT screw 4×20	1			
87.	M13 100 242	Terminal block	1	▲	3P	
88.	R50 429 701	Terminal fix plate	1			
89.	H00 312 007	PTT screw 4×6	36			
90.	Y55 009 367	Wiring diagram	1			
91.	R50 429 693	Control cover	1			
92.	R50 430 693	Side plate	1			
93.	R50 351 225	Cord bush	4			
94.	R50 472 171	Circuit board	1	▲	FU-M05-D1	
95.	R50 327 730	Circuit fix plate(upper)	1			
96.	R50 429 695	Circuit fix plate(lower)	1			
97.	H00 000 332	PTT screw 4×10	6			
98.	Y55 007 235	Capacitor	1	▲	4.0 μF·440VAC	
99.	Y55 003 235	Capacitor	1	▲	4.0 μF·440VAC	
100.	R50 530 699	Separator	2			
101.	R50 530 700	Separator	2			
102.	R50 530 228	Cord band	6			



* shows accessory parts.

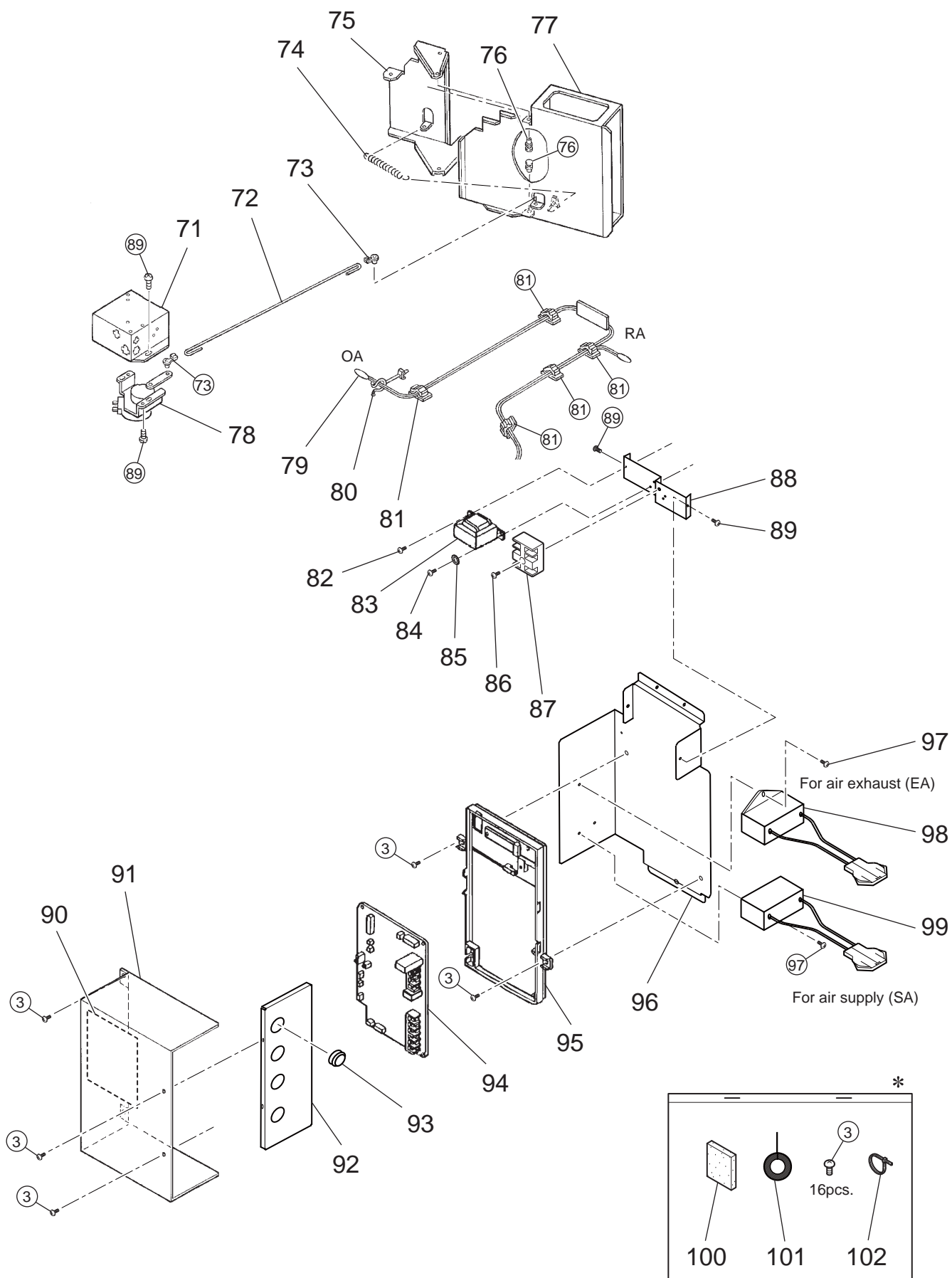
Model GUF-50RD3 

No.	Parts No.	Name of part	Q'ty pcs/unit	Critical for safety	Remarks	Price
1.	H00 000 488	PTT screw 4×12	2			
2.	R50 216 381	Core guide	1			
3.	H00 000 487	PTT screw 4×8	49			
4.	R50 028 610	Flange	4			
5.	R50 351 708	Cover	2			
6.	R50 095 380	Hanger	4			
7.	H00 000 244	PT screw 6×12	15			
8.	Y50 062 718	Filter	2	▲		
9.	R50 478 711	Lossnay core	2	▲		
10.	R50 478 382	Core guide	1			
11.	R50 466 344	Hinge	1			
12.	Y50 029 712	Fix piece	1			
13.	M34 074 017	Special screw 4×11	1			
14.	X50 002 707	Maintenance cover	1			
15.	R50 429 700	Fix piece	1			
16.	R50 429 699	Fix plate	1			
17.	R50 472 699	Heat exchanger	1	▲		
18.	R40 632 936	Thermistor	1	▲		
19.	R40 647 340	Thermistor	1	▲		
20.	R50 474 737	Linear expansion valve	1	▲		
21.	R50 530 691	Maintenance cover(side)	1		for coolant	
22.	H00 189 007	PTT screw 5×10	31			
23.	R50 530 692	Maintenance cover(left)	1		for coolant	
24.	R50 530 694	Maintenance cover(right)	1		for coolant	
25.	R50 429 698	Humidifier cover	1			
26.	R50 429 486	Humidifier cover(IN)	1			
27.	M45 280 707	Water sensor	2	▲		
28.	M35 282 045	Special screw 4×12	2			
29.	K81 602 035	Special washer	1			
30.	H00 260 045	PTT screw 4×8	5			
31.	Y55 007 692	Water sensor plate	1			



Model GUF-50RD3 4

No.	Parts No.	Name of part	Q'ty pcs/unit	Critical for safety	Remarks	Price
51.	R50 331 067	Special nut(8)	2		Left-handed	
52.	M34 398 077	Tab washer	2			
53.	R50 351 480	Centrifugal fan	2	▲	φ 220	
54.	R50 478 707	Fan base	2			
55.	M34 706 465	Special washer	2		φ 10	
56.	Y50 062 454	Motor	1	▲		
57.	R50 351 713	Motor fix plate	2			
58.	Y55 003 452	Motor	1	▲		



* shows accessory parts.

Model GUF-50RD3④

No.	Parts No.	Name of part	Q'ty pcs/unit	Critical for safety	Remarks	Price
71.	Y50 061 693	Damper motor cover	1			
72.	R50 232 150	Rod	1			
73.	R50 054 225	Special bush	2			
74.	R50 069 156	Pull spring	1			
75.	R50 472 716	Damper support	1			
76.	M31 234 089	Special bush	2			
77.	R50 472 715	Damper	1			
78.	Y50 061 260	Damper motor (GM)	1	▲	AC220·240V	
79.	Y55 003 216	Thermistor	1	▲		
80.	D41 093 224	Cord clamper	1			
81.	R50 399 224	Cord clip	5			
82.	H00 000 349	PT screw 4×8	1			
83.	Y55 001 217	Transformer	1	▲		
84.	H00 011 008	PT screw 4×8(BS)	3			
85.	H00 013 076	Lock washer(4)	3			
86.	H00 141 005	PPT screw 4×20	1			
87.	M13 100 242	Terminal block	1	▲	3P	
88.	R50 429 701	Terminal fix plate	1			
89.	H00 312 007	PTT screw 4×6	36			
90.	Y55 009 367	Wiring diagram	1			
91.	R50 429 693	Control cover	1			
92.	R50 430 693	Side plate	1			
93.	R50 351 225	Cord bush	4			
94.	R50 472 171	Circuit board	1	▲	FU-M05-D1	
95.	R50 327 730	Circuit fix plate(upper)	1			
96.	R50 429 695	Circuit fix plate(lower)	1			
97.	H00 000 332	PTT screw 4×10	6			
98.	Y55 007 235	Capacitor	1	▲	4.0 μF·440VAC	
99.	Y55 003 235	Capacitor	1	▲	4.0 μF·440VAC	
100.	R50 530 699	Separator	2			
101.	R50 530 700	Separator	2			
102.	R50 530 228	Cord band	6			