



The PAC-MK-BC allows the connection of M Series and Mr Slim indoor unit models to the City Multi PUMY-P112, 125 and 140(V)YKM outdoor units, enabling them to be utilised as Multi-splits. The configuration also allows City Multi indoor units on the same system.

Key Features

- Compatible with M Series and Mr Slim indoor units
- Compact size and flexible connection
- Combine splits and VRF indoor units in one PUMY-P system



Air Conditioning

Product Information

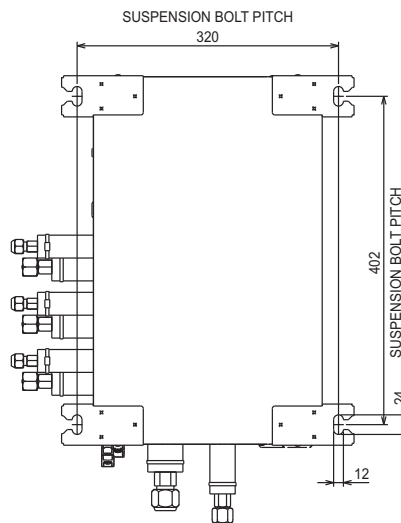
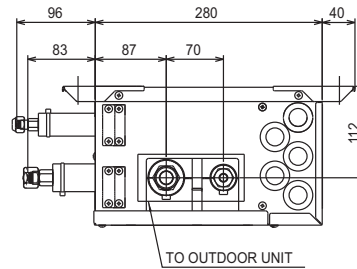
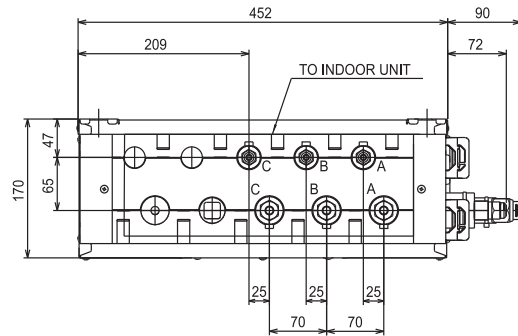
PAC-MK30BC Branch Box

Making a
World of
Difference

BOX REFERENCE		PAC-MK30BC
MAX NO. OF CONNECTABLE INDOOR UNITS		3
COMPATIBLE OUTDOOR UNITS		PUMY-P112/125/140(V)YKM1
COMPATIBLE INDOOR UNITS*		MSZ, MFZ, PLA, PCA, PEAD, PKA, PSA, SEZ, SLZ
PIPE SIZE mm (in)	Gas	15.88 (5/8")
	Liquid	9.52 (3/8")
WEIGHT (kg)		6.7
DIMENSIONS (mm)	Width	450
	Depth	280
	Height	170
ELECTRICAL SUPPLY		220-240v, 50Hz
PHASE		Single
FUSE RATING (BS88) - HRC (A)		6

Notes: * City Multi indoor units can be used in conjunction with PAC-MK-BC, M Series and Mr Slim indoor units. Some limitations apply, please consult your sales office for application of this model.

DIMENSIONS



Telephone: 01707 282880

email: air.conditioning@meuk.mee.com web: www.airconditioning.mitsubishielectric.co.uk

UNITED KINGDOM Mitsubishi Electric Europe Living Environmental Systems Division
Travellers Lane, Hatfield, Hertfordshire, AL10 8XB, England General Enquiries Telephone: 01707 282880 Fax: 01707 278881

IRELAND Mitsubishi Electric Europe Westgate Business Park, Ballymount, Dublin 24, Ireland
Telephone: Dublin (01) 419 8800 Fax: Dublin (01) 419 8890 International code: (003531)

Country of origin: United Kingdom - Japan - Thailand - Malaysia. ©Mitsubishi Electric Europe 2015. Mitsubishi and Mitsubishi Electric are trademarks of Mitsubishi Electric Europe B.V. The company reserves the right to make any variation in technical specification to the equipment described, or to withdraw or replace products without prior notification or public announcement. Mitsubishi Electric is constantly developing and improving its products. All descriptions, illustrations, drawings and specifications in this publication present only general particulars and shall not form part of any contract. All goods are supplied subject to the Company's General Conditions of Sale, a copy of which is available on request. Third-party product and brand names may be trademarks or registered trademarks of their respective owners.



Note: The fuse rating is for guidance only. Please refer to the relevant databook for detailed specification. It is the responsibility of a qualified electrician/electrical engineer to select the correct cable size and fuse rating based on current regulation and site specific conditions. Mitsubishi Electric's air conditioning and heat pump systems contain fluorinated greenhouse gases R410A, R407C and R134a.



www.greengateway.mitsubishielectric.co.uk

Mitsubishi Electric UK's commitment
to the environment

Follow us @meuk_les
Follow us @green_gateway

Mitsubishi Electric
Living Environmental Systems UK

mitsubishielectric2

Effective as of April 2015