

SERVICE PARTS LIST FOR MITSUBISHI ELECTRIC PACKAGED AIR-CONDITIONERS

Series : PFD-P•VM-E

For use with the R410A

REVISED

Mar. 2016

BWE0609D

INDEX

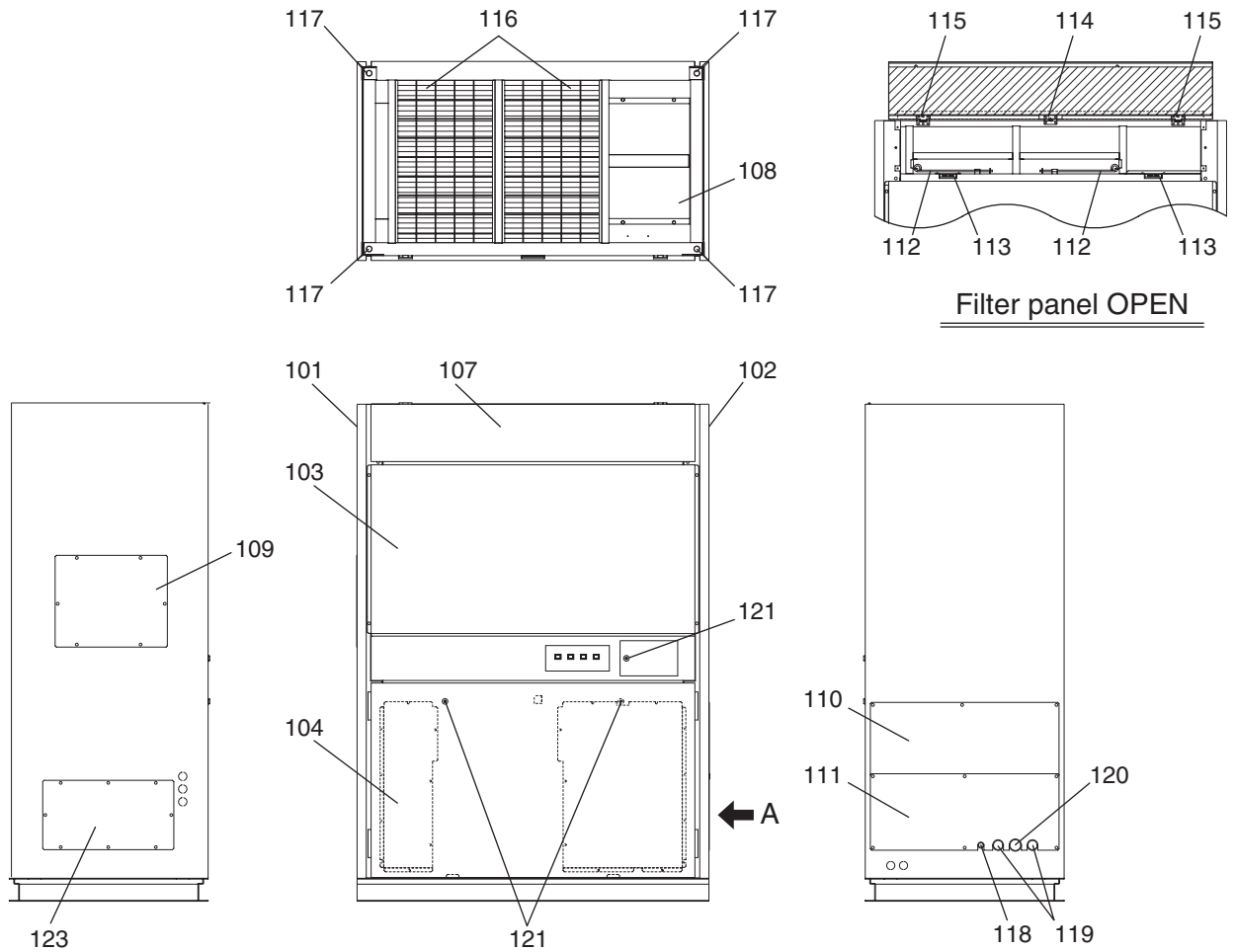
PFD-P250VM-E

PFD-P500VM-E

Part information update day : **2016/03/07**

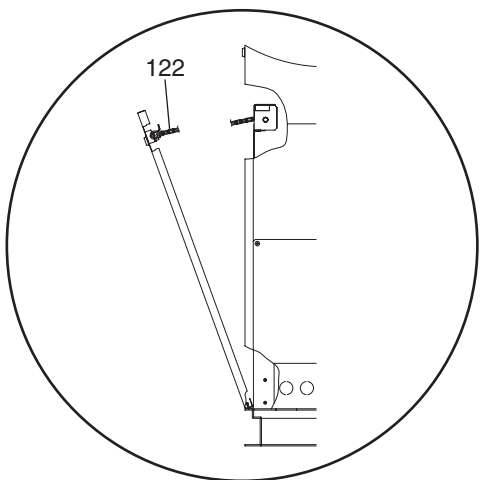
Please change the old catalog (issued July 2007, No.BWE0609C) to this new catalog.
Content of revision : Some of parts are changed.



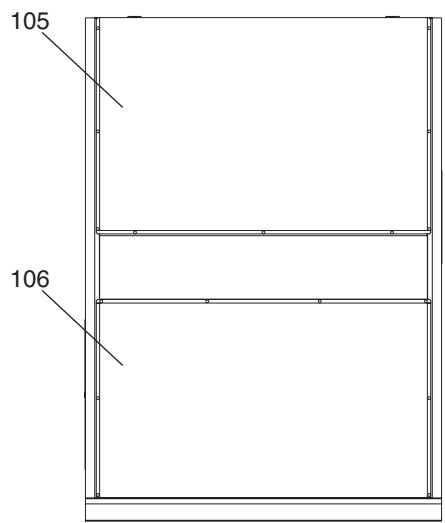


Filter panel OPEN

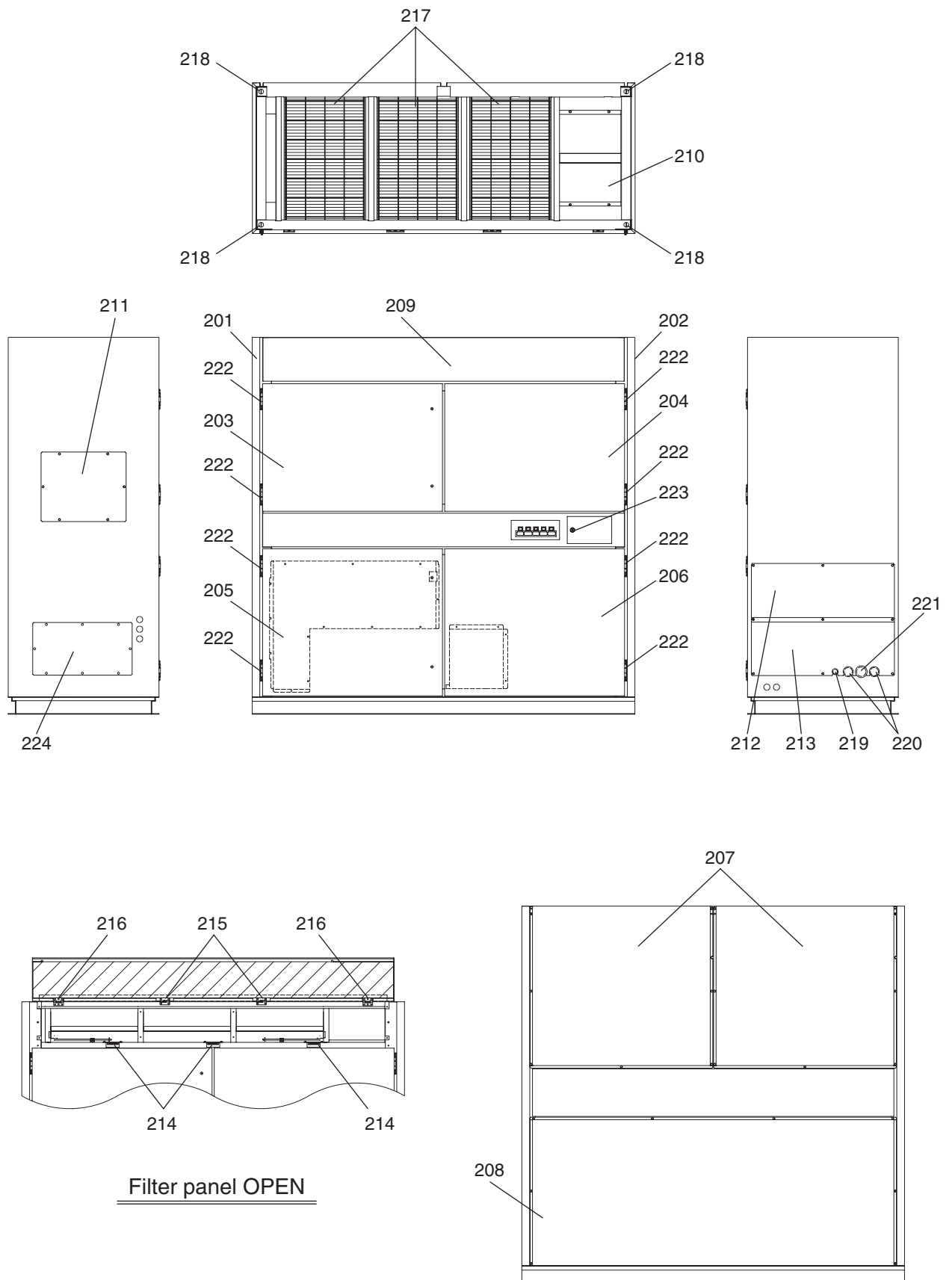
← A



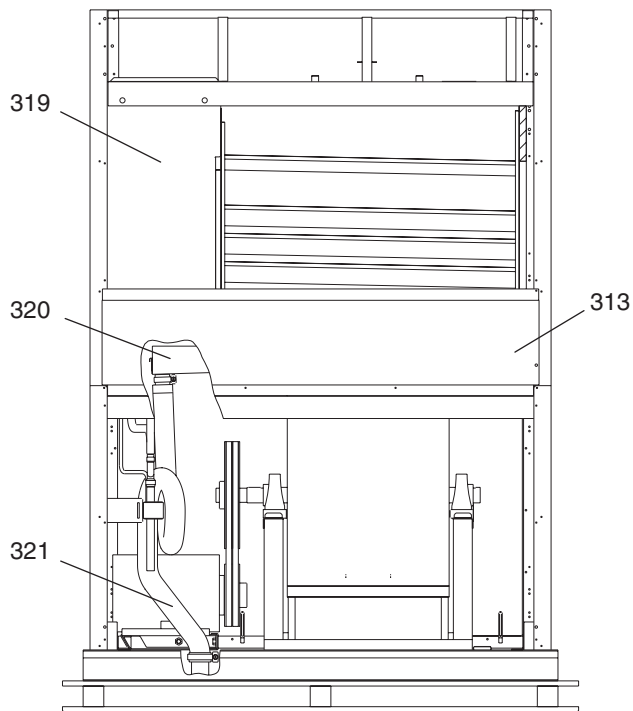
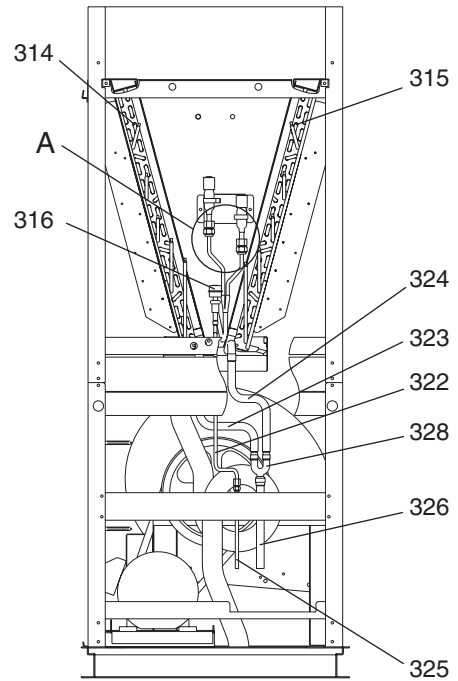
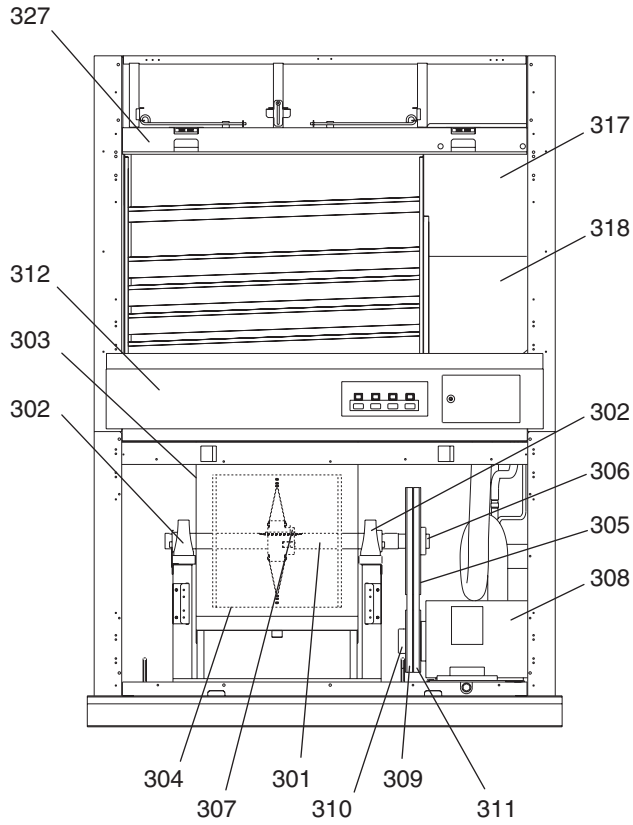
Viewed from point A
in the direction of the arrow



No.	Part No.	G : RoHS Apply Only W : RoHS Apply by Running Change		Spec.	PFD-P250VM-E					Dwg. No.	Notes for the models	Revision info.
			Part Name									
101	R63 Y05 031	G	Side panel assy L		1					W664153G24		Chg.
102	R63 Y06 031	G	Side panel assy R		1					KG00L477G08		Chg.
103	R63 Y10 646	G	Front panel assy U		1					KG00L487G06		Chg.
104	R63 Y11 646	G	Front panel assy L		1					KG00L485G05		Chg.
105	R63 Y42 652	G	Panel assy BU		1					KG00L489G04		Chg.
106	R63 Y43 652	G	Panel assy BL		1					KG00L491G04		Chg.
107	R63 Y46 652	G	Filter panel assy		1					KG00L892G05		Chg.
108	R63 2H2 690	G	Cover assy		1					KG00M249G02		Chg.
109	R63 Y17 667	G	Panel cover assy L	Upper	1					W915872G08		Chg.
110	R63 Y18 667	G	Panel cover assy R1		1					W915873G02		
111	R63 Y19 667	G	Panel cover assy R2		1					W915874G02		
112	R63 2H2 643	G	Attachment		2					W664113G01		
113	R63 5G0 011	G	Plate magnet		2					W915323G02		
114	R61 001 053	G	Hinge	TH-10SUS-L	1					P687131X01		
115	R63 5G0 053	G	Hinge	TH-20	2					P687129X01		
116	R63 2H2 500	G	Filter		2					P781381X02		Chg.
117	R63 L42 086	G	Cap	CP-30-BC-20	4					P655059X01		
118	R63 5G0 104	G	Rubber bush	24D	1					S695007H24		
119	R63 R22 104	G	Rubber bush	42D	2					S695007H42		
120	R63 N86 104	G	Rubber bush	SG-52A-UK	1					S695002H07		
121	R63 M29 060	G	Hexagonal lock		3					P687120X01		
122	R63 G85 631	G	Chain		1					W858977H02		
123	R63 Y20 667	G	Panel cover assy L	Under	1					W916570G08		Chg.



No.	Part No.	G : RoHS Apply Only W : RoHS Apply by Running Change		Spec.	PFD-P500VM-E					Dwg. No.	Notes for the models	Revision info.
			Part Name									
201	R63 Y05 031	G	Side panel assy L		1					W664153G24		Chg.
202	R63 Y06 031	G	Side panel assy R		1					KG00L477G08		Chg.
203	R63 Y12 646	G	Front panel assy UL		1					KG00D577G03		Chg.
204	R63 Y13 646	G	Front panel assy UR		1					W914880G20		Chg.
205	R63 Y14 646	G	Front panel assy LL		1					KG00D576G01		
206	R63 Y15 646	G	Front panel assy LR		1					W914878G04		
207	R63 Y44 652	G	Panel assy BU		2					KG00L482G05		Chg.
208	R63 Y45 652	G	Panel assy BL		1					W662681G08		Chg.
209	R63 Y47 652	G	Filter panel assy		1					W662693G19		Chg.
210	R63 5G0 690	G	Cover assy		1					W915321G03		
211	R63 Y17 667	G	Panel cover assy L	Upper	1					W915872G08		Chg.
212	R63 Y18 667	G	Panel cover assy R1		1					W915873G02		
213	R63 Y19 667	G	Panel cover assy R2		1					W915874G02		
214	R63 5G0 011	G	Plate magnet		3					W915323G02		
215	R61 001 053	G	Hinge	TH-10SUS-L	2					P687131X01		
216	R63 5G0 053	G	Hinge	TH-20	2					P687129X01		
217	R63 5G0 500	G	Filter		3					P781382X02		Chg.
218	R63 L42 086	G	Cap	CP-30-BC-20	4					P655059X01		
219	R63 5G0 104	G	Rubber bush	24D	1					S695007H24		
220	R63 R22 104	G	Rubber bush	42D	2					S695007H42		
221	R63 N86 104	G	Rubber bush	SG-52A-UL	1					S695002H07		
222	R63 5G0 054	G	Hinge		8					P687128X01		
223	R63 M29 060	G	Hexagonal lock		1					P687120X01		
224	R63 Y20 667	G	Panel cover assy L	Under	1					W916570G08		Chg.



Note :

When installing Liquid-pipe assy. No.316, apply Locktight (No.125) to the screw at the Heat-exchanger joint.

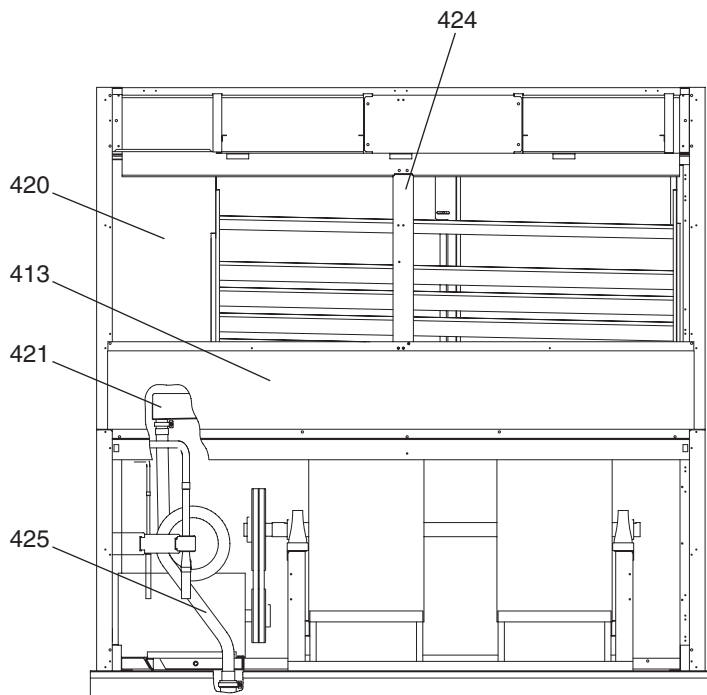
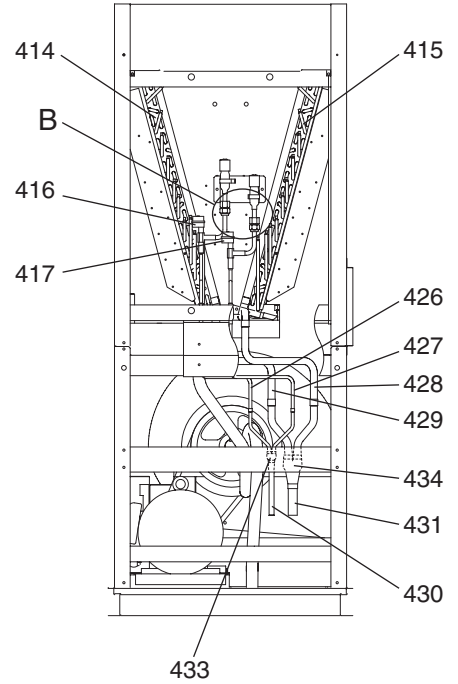
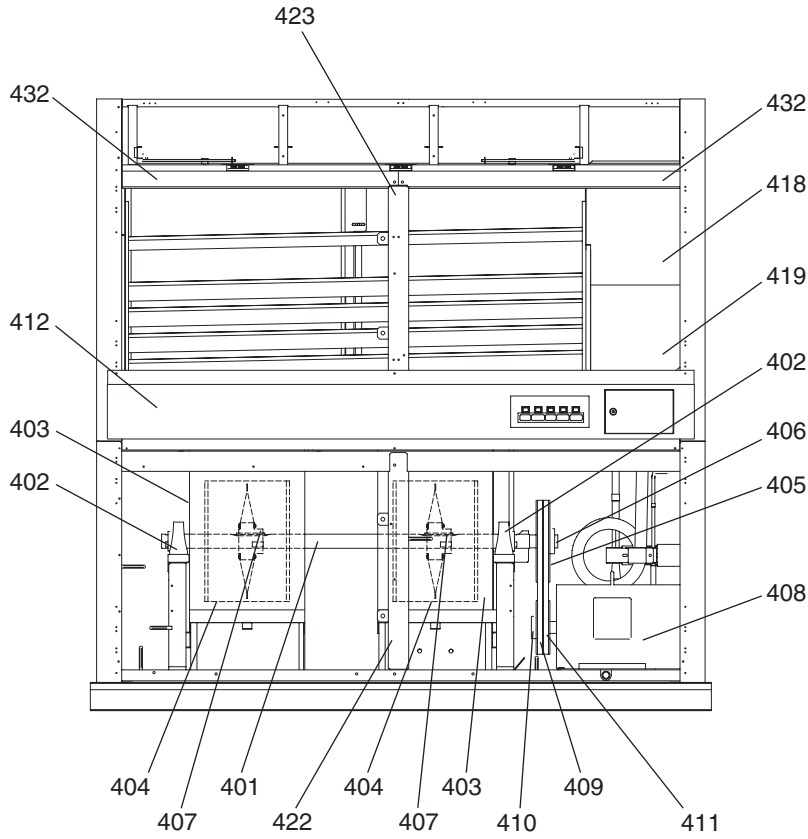
After tightening the flare nut by hand, tighten it further with a torque wrench.

After tightening the flare nut, apply Locktight No.125 to the outside of flare nut and flare nut space as shown below with the arrows.

*Tightening Torque $54 \pm 10\% \text{N}\cdot\text{m}$

Detailed View of Section A

No.	Part No.	G : RoHS Apply Only W : RoHS Apply by Running Change		Spec.	PFD-P250VM-E						Dwg. No.	Notes for the models	Revision info.
			Part Name										
301	R63 2H2 100	G	Shaft		1						W664197H03		Chg.
302	R61 L42 103	G	Ball bearing unit		2						W494665H04		
303	R63 Y01 109	G	Fan case	39-38	1						P713097X01		
304	R63 N80 114	G	Fan	39-38-45-R	1						P712271X01		
305	R63 2H2 107	G	V-pulley	280-B2-42	1						P613248X01		Chg.
306	R63 K03 138	G	Key	12 × 8 × 70	1						S596111H06		
307	R61 618 137	G	Key	12 × 8 × 90	1						S596111H12		
308	R61 314 220	G	Motor	SF-PR 3-phase 400V 3.7kW 4P	1						S711015H27		Chg.
309	R61 N80 107	G	V-pulley	170-B-2 3.7kW	1						P613243X01		Chg.
310	R63 N61 137	G	Key	8 × 7 × 50	1						W893033H01		
311	R63 127 130	G	V-belt	B54 RED	2						S614004H89		
312	R63 Y21 667	G	Lamp cover assy		1						W664172G21		Chg.
313	R63 Y48 652	G	Panel assy BM		1						W664168G08		Chg.
314	R63 2H2 481	G	Heat exchanger assy F		1						W278992G05		Chg.
315	R63 2H2 408	G	Heat exchanger assy B		1						W278993G05		Chg.
316	R63 2H2 532	G	Liquid pipe assy		1						W917358G23		Chg.
317	R63 2H2 667	G	Partition board U-F		1						KG00D402G01		
318	R63 2H3 667	G	Partition board D-F		1						KG00D403G01		
319	R63 2H2 657	G	Partition board B		1						KG00C689G01		
320	R63 2H2 546	G	Drain pan assy		1						W915842G04		Chg.
321	R63 5G0 525	G	Drain hose assy		1						KG00M699G01		Chg.
322	R63 2H2 077	G	Pipe cover		1						S226110H40	Liquid	
323	R63 2H3 668	G	Pipe cover		1						S226123K12	No.1 Gas	
324	R63 2H3 690	G	Pipe cover		1						S226123K05	No.2 Gas	
325	R63 2H3 077	G	Pipe cover		1						S226110K06	Liquid	
326	R63 2H3 694	G	Pipe cover		1						S226123H44	Gas	
327	R63 2H2 503	G	Sealing		2						W915879H09	Filter frame	
328	R63 5G2 697	G	Pipe cover		1						W887239H22	Divider gas	



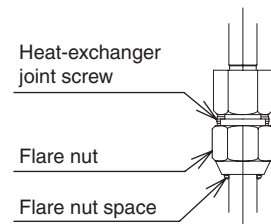
Note :

When installing Liquid-pipe assy. No.416 and No.417, apply Locktight (No.125) to the screw at the Heat-exchanger joint.

After tightening the flare nut by hand, tighten it further with a torque wrench.

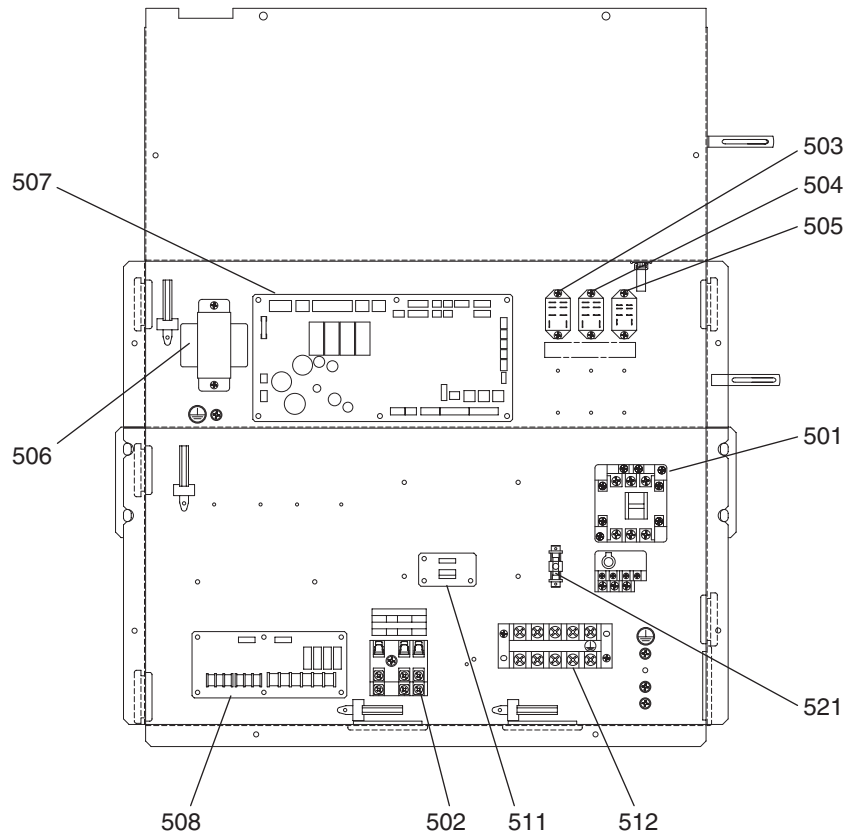
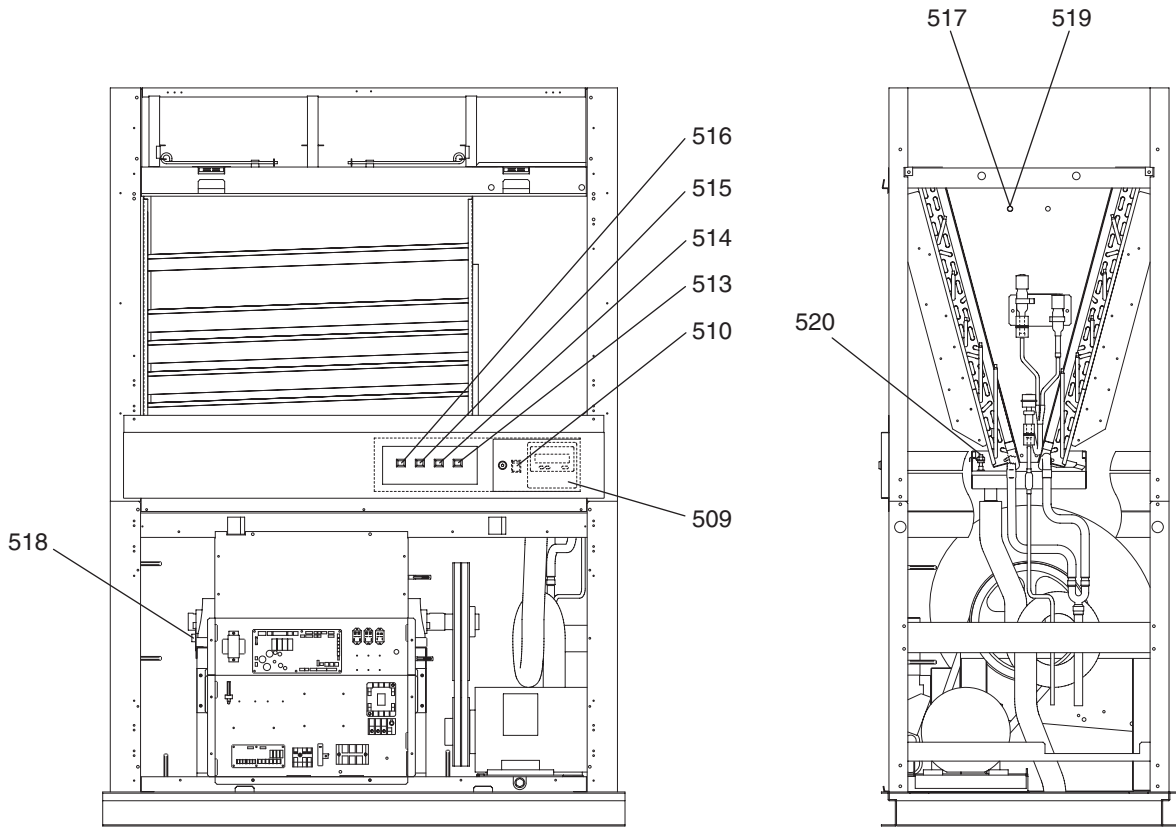
After tightening the flare nut, apply Locktight No.125 to the outside of flare nut and flare nut space as shown below with the arrows.

*Tightening Torque $54 \pm 10\% \text{N}\cdot\text{m}$

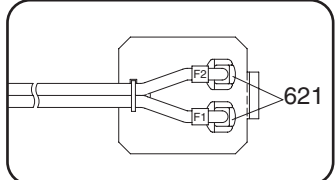
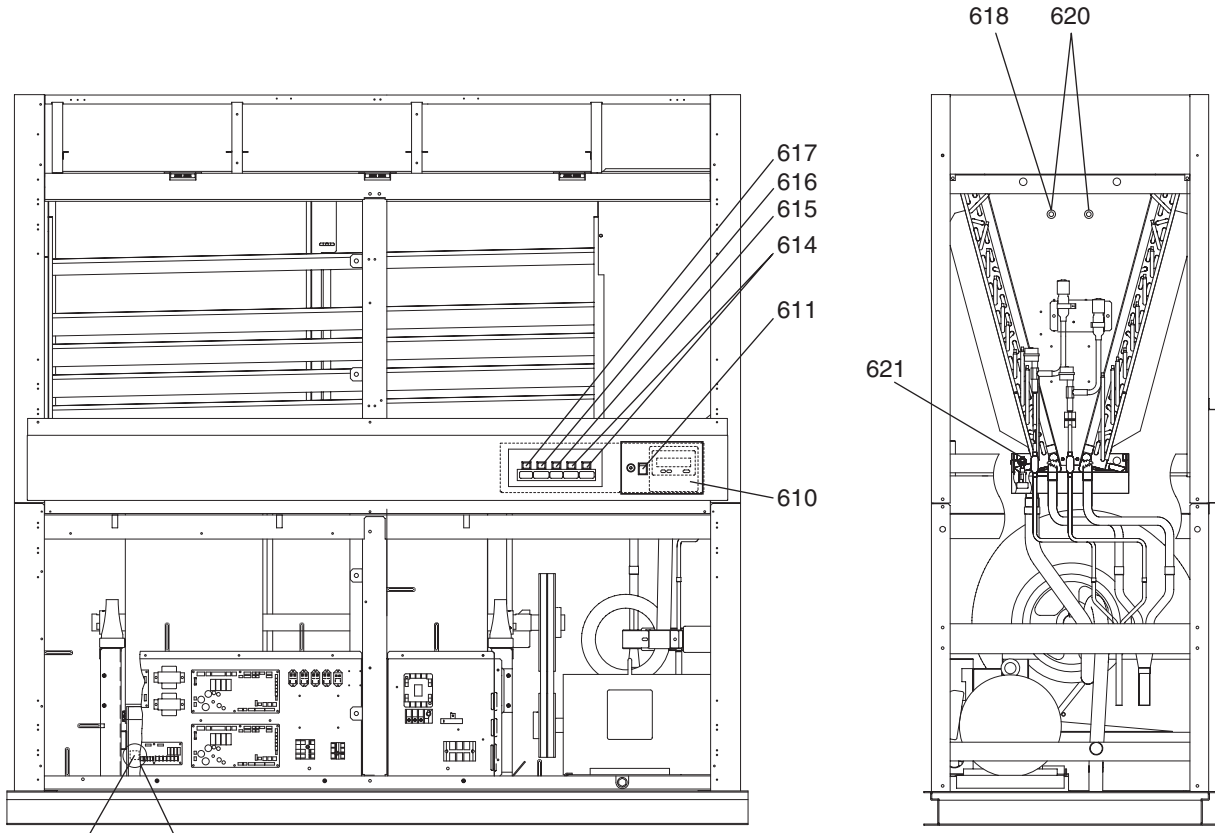


Detailed View of Section B

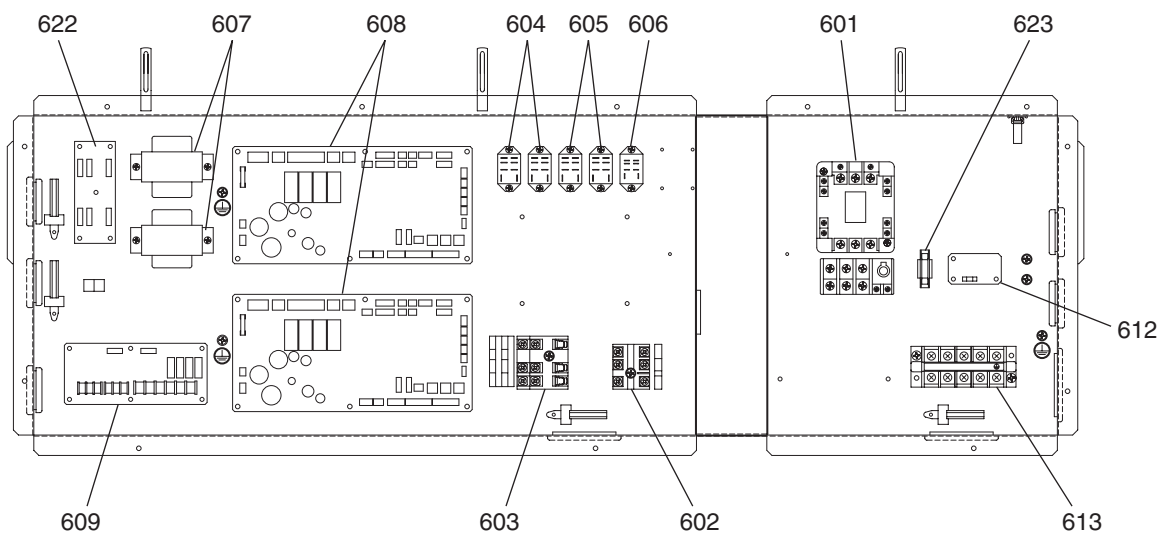
No.	Part No.	G : RoHS Apply Only W : RoHS Apply by Running Change		Spec.	PFD-P500VM-E					Dwg. No.	Notes for the models	Revision info.
			Part Name									
401	R63 5G0 100	G	Shaft		1					W662655H02		Chg.
402	R61 L42 103	G	Ball bearing unit		2					W494665H04		
403	R63 Y02 109	G	Fan case	39-27	2					P713095X01		
404	R63 N61 114	G	Fan	39-27-45-R	2					P712256X01		
405	R61 N63 108	G	V-pulley	250-B-2-42	1					P613257X01		Chg.
406	R63 K03 138	G	Key	12 x 8 x 70	1					S596111H06		
407	R61 618 137	G	Key	12 x 8 x 90	2					S596111H12		
408	R63 4H0 220	G	Motor	SF-JR 3-phase 400V 5.5kW 4P	1					S711009H08		
409	R61 N63 107	G	V-pulley	160-B-2-38	1					P613256X01		Chg.
410	R63 K03 137	G	Key	10 x 8 x 55	1					S596111H10		
411	R63 5G1 778	G	V-belt	B50 RED	2					S614004H51		
412	R63 Y22 667	G	Lamp cover assy		1					W663055G35		Chg.
413	R63 Y49 652	G	Panel assy BM		1					W662694G18		Chg.
414	R63 5G1 409	G	Heat exchanger assy F		1					W663076G21		Chg.
415	R63 5G1 408	G	Heat exchanger assy B		1					W663078G21		Chg.
416	R63 5G0 532	G	Liquid pipe assy	LEV1	1					W917358G21		Chg.
417	R63 5G0 533	G	Liquid pipe assy	LEV2	1					W917358G22		Chg.
418	R63 2H2 667	G	Partition board U-F		1					KG00D402G01		
419	R63 2H3 667	G	Partition board D-F		1					KG00D403G01		
420	R63 2H2 657	G	Partition board B		1					KG00C689G01		
421	R63 5G0 546	G	Drain pan assy		1					W915842G03		Chg.
422	R63 Y15 125	G	Beam assy UC		1					KG00D430G01		
423	R63 Y16 125	G	Beam assy TC		1					KG00D429G01		
424	R63 5G0 633	G	Beam assy TC		1					W914827G04		
425	R63 5G0 525	G	Drain hose assy		1					KG00M699G01		Chg.
426	R63 5G1 694	G	Pipe cover		1					W915837G07	No.1 Liquid	
427	R63 5G2 694	G	Pipe cover		1					W915837G08	No.2 Liquid	
428	R63 5G2 690	G	Pipe cover		1					W915837G09	No.1 Gas	
429	R63 5G1 697	G	Pipe cover		1					W915837G10	No.2 Gas	
430	R63 5G3 667	G	Pipe cover		1					W887239H42	Liquid	
431	R63 5G3 690	G	Pipe cover		1					W887239H43	Gas	
432	R63 5G2 503	G	Sealing		2					W915879H07	Filter frame	
433	R63 5G3 694	G	Pipe cover		1					W887239H29	Divider Liquid	
434	R63 5G2 697	G	Pipe cover		1					W887239H22	Divider gas	



No.	Part No.	G : RoHS Apply Only W : RoHS Apply by Running Change		Spec.	PFD-P250VM-E					Dwg. No.	Notes for the models	Revision info.
		Part Name										
501	R63 Y34 225	G	Contactor	PAK-21JTC	1					S427026H56		
502	R63 336 246	G	Terminal block		1					P436114X03		
503	R63 925 963	G	Relay	LY2F	1					S421003H06		
504	R63 Y07 215	G	Relay	LY2F	1					P421807X01		
505	R63 Y08 215	G	Relay	LY2ZF	1					P421289X01		
506	R61 004 260	G	Transformer		1					P715419X01		
507	R63 Y76 281	G	Control board		1					PP00100B08		Chg.
508	R61 224 280	G	Indicator board	YU-80HK	1					KE00D142G01		Chg.
509	R63 Y21 304	G	Controller	PAR-20MAA	1					W267102G61		
510	R63 G95 206	G	Switch	LLK35C59	1					S422003H04		
511	R63 Y22 280	G	DSA board		1					W849072G13		
512	R63 Y05 246	G	Terminal block		1					P436151X01		
513	R63 Y10 217	G	LED	240V RED	1					P413072X02		Chg.
514	R63 Y11 217	G	LED	240V ORANGE	1					P413071X02		Chg.
515	R63 Y12 217	G	LED	240V GREEN	1					P413070X02		Chg.
516	R63 Y13 217	G	LED	240V WHITE	1					P413069X02		Chg.
517	R63 2H2 202	G	Thermistor assy		1					KG00D513G01		
518	R63 5G0 203	G	Thermistor assy F		1					W887895G05		
519	R63 729 104	G	Cord bush	KR-51	1					P459023X01		
520	R63 2H2 541	G	Float switch assy		1					W915897G07		Chg.
521	R63 Y02 241	G	Fuse		1					S423001H14		



Detailed View of Section A



No.	Part No.	G : RoHS Apply Only W : RoHS Apply by Running Change	Part Name	Spec.	PFD-P500VM-E							Dwg. No.	Notes for the models	Revision info.
602	R63 Y08 715	G	Terminal block		1							P436239X01		Chg.
603	R63 336 246	G	Terminal block		1							P436114X03		
604	R63 925 963	G	Relay	LY2F	2							S421003H06		
605	R63 Y07 215	G	Relay	LY2F	2							P421807X01		
606	R63 Y08 215	G	Relay	LY2ZF	1							P421289X01		
607	R61 004 260	G	Transformer		2							P715419X01		
608	R63 Y76 281	G	Control board		2							PP00100B08		Chg.
609	R61 224 280	G	Indicator board	YU-80HK	1							KE00D142G01		Chg.
610	R63 Y21 304	G	Controller	PAR-20MAA	1							W267102G61		
611	R63 G95 206	G	Switch	LLK35C59	1							S422003H04		
612	R63 Y22 280	G	DSA board		1							W849072G13		
613	R63 Y05 246	G	Terminal block		1							P436151X01		
614	R63 Y10 217	G	LED	240V RED	2							P413072X02		Chg.
615	R63 Y11 217	G	LED	240V ORANGE	1							P413071X02		Chg.
616	R63 Y12 217	G	LED	240V GREEN	1							P413070X02		Chg.
617	R63 Y13 217	G	LED	240V WHITE	1							P413069X02		Chg.
618	R63 5G0 201	G	Thermistor assy 1		1							KG00D470G01		
619	R63 5G0 203	G	Thermistor assy F		1							W887895G05		
620	R63 729 104	G	Cord bush	KR-51	4							P459023X01		
621	R63 5G0 541	G	Float switch assy		1							W915897G02		
622	R63 6E3 281	G	LEV adaptor board		1							W896059G04		
623	R63 Y02 241	G	Fuse		1							S423001H14		

mitsubishi
MITSUBISHI ELECTRIC CORPORATION

BWE0609D (20160331)