

PARTS CATALOG

Series SLZ Ceiling Cassettes R410A

Indoor unit
[Model Name]

[Service Ref.]

SLZ-KF25VA2

SLZ-KF25VA2.TH
SLZ-KF25VA2.TH-ER

SLZ-KF35VA2

SLZ-KF35VA2.TH
SLZ-KF35VA2.TH-ER

SLZ-KF50VA2

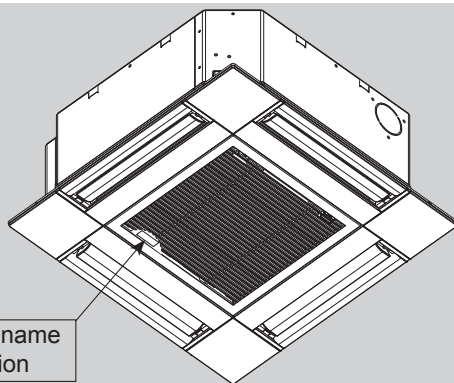
SLZ-KF50VA2.TH
SLZ-KF50VA2.TH-ER

SLZ-KF60VA2

SLZ-KF60VA2.TH
SLZ-KF60VA2.TH-ER

Note:

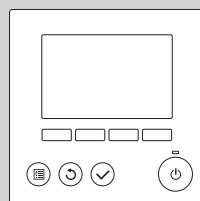
- RoHS compliant products have <G> mark on the spec name plate.



INDOOR UNIT



WIRELESS REMOTE
CONTROLLER
(Option)



WIRED REMOTE CONTROLLER
(Option)

CONTENTS

1. RoHS PARTS LIST..... 2

SERVICE MANUAL (OCH616)

1

RoHS PARTS LIST

PANEL PARTS

SLP-2FA (Standard)

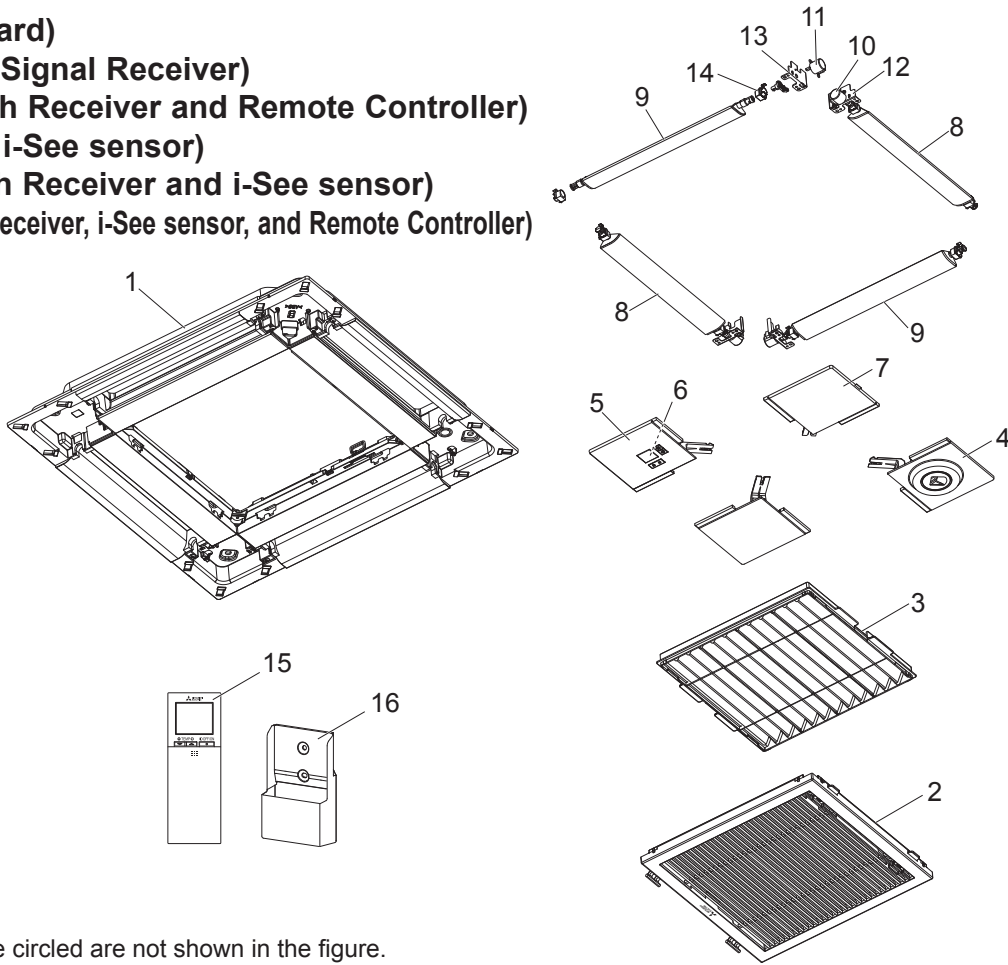
SLP-2FAL (with Signal Receiver)

SLP-2FALM (with Receiver and Remote Controller)

SLP-2FAE (with i-See sensor)

SLP-2FALE (with Receiver and i-See sensor)

SLP-2FALME (with Receiver, i-See sensor, and Remote Controller)



Parts numbers that are circled are not shown in the figure.

No.	RoHS	Parts No.	Parts Name	Specification	Q'ty/unit						Wiring Diagram Symbol
					SLP-2FA	SLP-2FAL	SLP-2FALM	SLP-2FAE	SLP-2FALE	SLP-2FALME	
1	G	E17 C26 003	AIR OUTLET GRILLE		1	1	1	1	1	1	
2	G	E17 C26 010	INTAKE GRILLE		1	1	1	1	1	1	
3	G	E17 C26 100	AIR FILTER		1	1	1	1	1	1	
4	G	E17 C29 975	CORNER PANEL (i-See sensor)					1	1	1	
5	G	E17 C28 975	CORNER PANEL (Signal Receiver)			1	1		1	1	
6	G	E17 C27 317	WIRELESS REMOTE CONTROLLER BOARD			1	1		1	1	W.B
7	G	E17 C26 975	CORNER PANEL	with safety strap	4	3	3	3	2	2	
8	G	E17 C26 037	AUTO VANE -1	GREEN	2	2	2	2	2	2	
9	G	E17 C27 037	AUTO VANE -2	BLUE	2	2	2	2	2	2	
10	G	E17 C26 303	VANE MOTOR-1	GREEN	2	2	2	2	2	2	
11	G	E17 C27 303	VANE MOTOR-2	BLUE	2	2	2	2	2	2	
12	G	E17 C26 946	COUPLING-1	GREEN	2	2	2	2	2	2	
13	G	E17 C27 946	COUPLING-2	BLUE	2	2	2	2	2	2	
14	G	E17 C26 044	VANE BUSH		8	8	8	8	8	8	
15	G	E17 D44 426	WIRELESS REMOTE CONTROLLER				1			1	
16	G	E17 D44 083	HOLDER				1			1	
17	G	E17 C26 033	WIRE HOOK		2	2	2	2	2	2	
18	G	E17 C28 087	JUNCTION CABLE (Signal Receiver)			1	1		1	1	
19	G	E17 C27 087	JUNCTION CABLE (i-See sensor)					1	1	1	

RoHS PARTS LIST

ELECTRICAL PARTS

SLZ-KF25VA2.TH

SLZ-KF35VA2.TH

SLZ-KF50VA2.TH

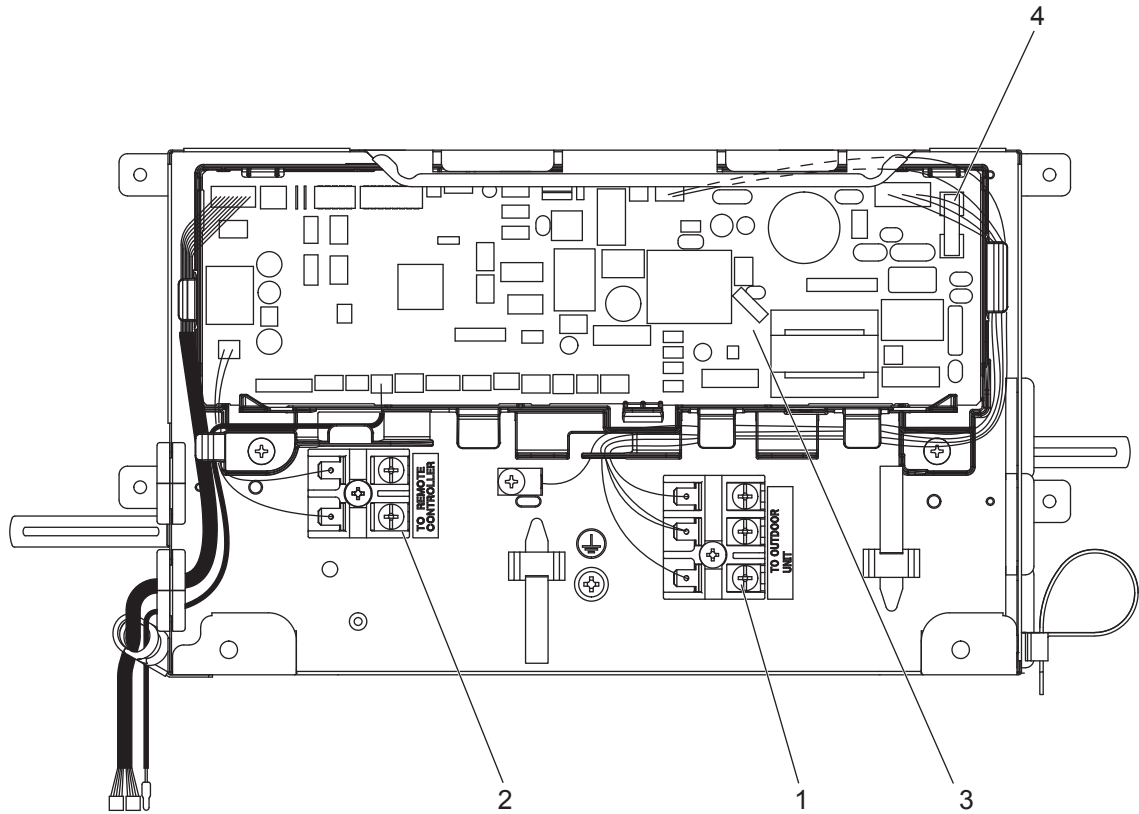
SLZ-KF60VA2.TH

SLZ-KF25VA2.TH-ER

SLZ-KF35VA2.TH-ER

SLZ-KF50VA2.TH-ER

SLZ-KF60VA2.TH-ER

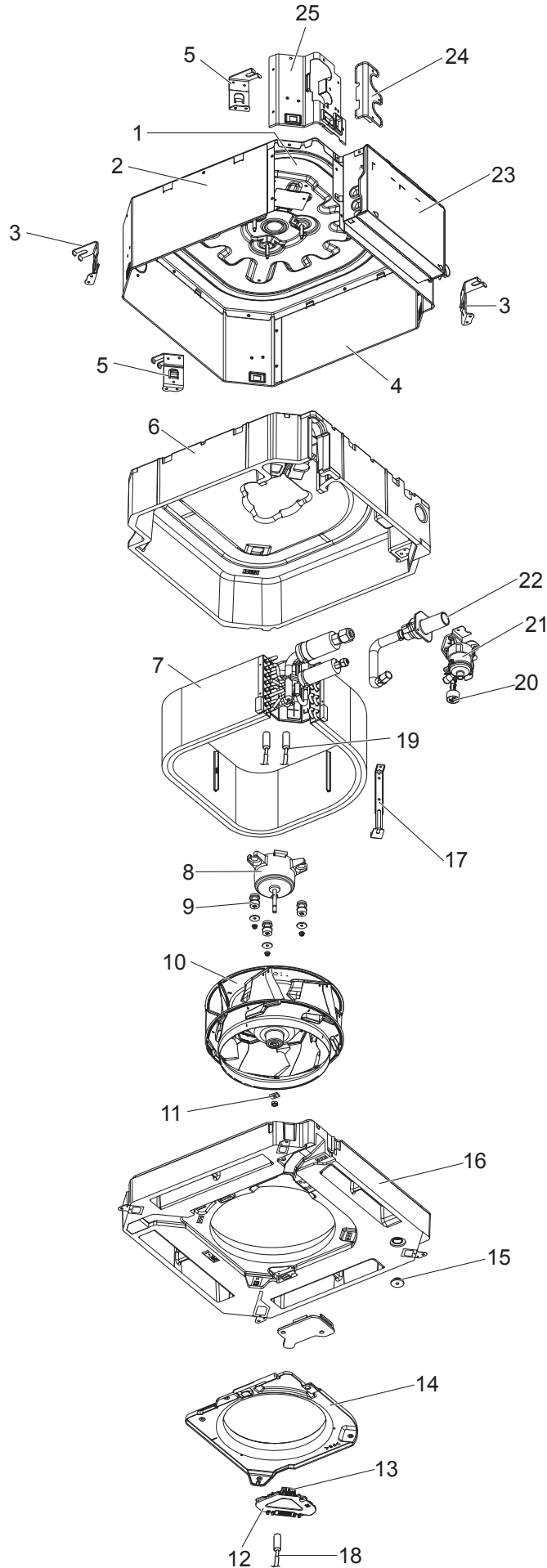


No.	RoHS	Parts No.	Parts Name	Specification	Q'ty/unit				Remarks (Drawing No.)	Wiring Diagram Symbol
					SLZ-KF25VA2.TH(-ER)	SLZ-KF35VA2.TH(-ER)	SLZ-KF50VA2.TH(-ER)	SLZ-KF60VA2.TH(-ER)		
1	G	E17 162 375	TERMINAL BLOCK		1	1	1	1		TB4
2	G	E17 156 375	TERMINAL BLOCK		1	1	1	1		TB5
3	G	E17 C93 447	INDOOR CONTROLLER BOARD		1	1	1	1		I.B
4	G	E17 648 382	FUSE	FSL 250V/6.3A	1	1	1	1		F1

RoHS PARTS LIST

ELECTRICAL PARTS

SLZ-KF25VA2.TH
SLZ-KF35VA2.TH
SLZ-KF50VA2.TH
SLZ-KF60VA2.TH
SLZ-KF25VA2.TH-ER
SLZ-KF35VA2.TH-ER
SLZ-KF50VA2.TH-ER
SLZ-KF60VA2.TH-ER



RoHS PARTS LIST

FUNCTIONAL PARTS

No.	RoHS	Parts No.	Parts Name	Specification	Q'ty/unit				Remarks (Drawing No.)	Wiring Diagram Symbol
					SLZ-KF25VA2.TH(-ER)	SLZ-KF35VA2.TH(-ER)	SLZ-KF50VA2.TH(-ER)	SLZ-KF60VA2.TH(-ER)		
1	G	E17 C12 290	BASE		1	1	1	1		
2	G	E17 C13 124	DRUM-B		1	1	1	1		
3	G	E17 C12 808	LEG-1		2	2	2	2		
4	G	E17 C12 124	DRUM-A		1	1	1	1		
5	G	E17 C12 809	LEG-2		2	2	2	2		
6	G	E17 C12 092	INNER COVER ASSY		1	1	1	1		
7	G	E17 C12 620	INDOOR HEAT EXCHANGER		1	1				
	G	E17 C14 620	INDOOR HEAT EXCHANGER				1			
	G	E17 C15 620	INDOOR HEAT EXCHANGER					1		
8	G	E17 C12 300	INDOOR FAN MOTOR		1	1	1	1		MF
9	G	E17 C12 105	MOTOR MOUNT		3	3	3	3		
10	G	E17 C12 502	TURBO FAN		1	1	1	1		
11	G	E17 766 097	SPL WASHER		1	1	1	1		
12	G	E17 C12 091	CONNECTOR COVER		1	1	1	1		
13	G	E17 C12 090	CONNECTOR BOX		1	1	1	1		
14	G	E17 C12 509	BELL MOUTH		1	1	1	1		
15	G	E17 436 524	DRAIN PLUG		1	1	1	1		
16	G	E17 C12 700	DRAIN PAN		1	1	1	1		
17	G	E17 C12 648	COIL SUPPORT		1	1	1	1		
18	G	E17 C12 308	ROOM TEMP.DETECTION THERMISTOR		1	1	1	1		TH1
19	G	E17 C12 307	PIPE TEMP. THERMISTOR/LIQUID/GAS		1	1	1	1		TH2,TH5
20	G	E17 C12 145	FLOAT SWITCH ASSY		1	1	1	1		FS
21	G	E17 C12 355	DRAIN PUMP		1	1	1	1		DP
22	G	E17 C12 702	DRAIN HOSE		1	1	1	1		
23	G	E17 C12 088	CONTROL BOX COVER		1	1	1	1		
24	G	E17 C13 006	COVER (DRUM-U)		1	1	1	1		
25	G	E17 C12 006	COVER (DRUM)		1	1	1	1		

Mr. SLIM

mitsubishi electric corporation

HEAD OFFICE : TOKYO BLDG., 2-7-3, MARUNOUCHI, CHIYODA-KU, TOKYO 100-8310, JAPAN
