

OUTDOOR UNIT

No. OBB767

PARTS CATALOG

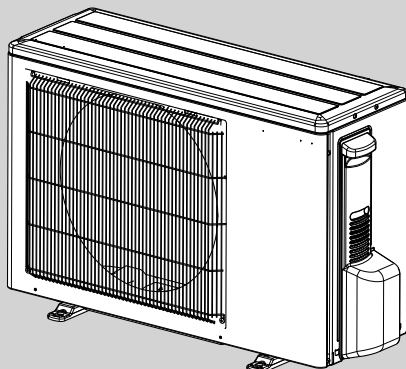
Models

MUZ-LN25VG - E1, ER1, ET1

MUZ-LN35VG - E1, ER1, ET1

MUZ-LN50VG - E1, ER1, ET1

MUZ-LN60VG - E1, ER1, ET1



MUZ-LN25VG
MUZ-LN35VG

CONTENTS

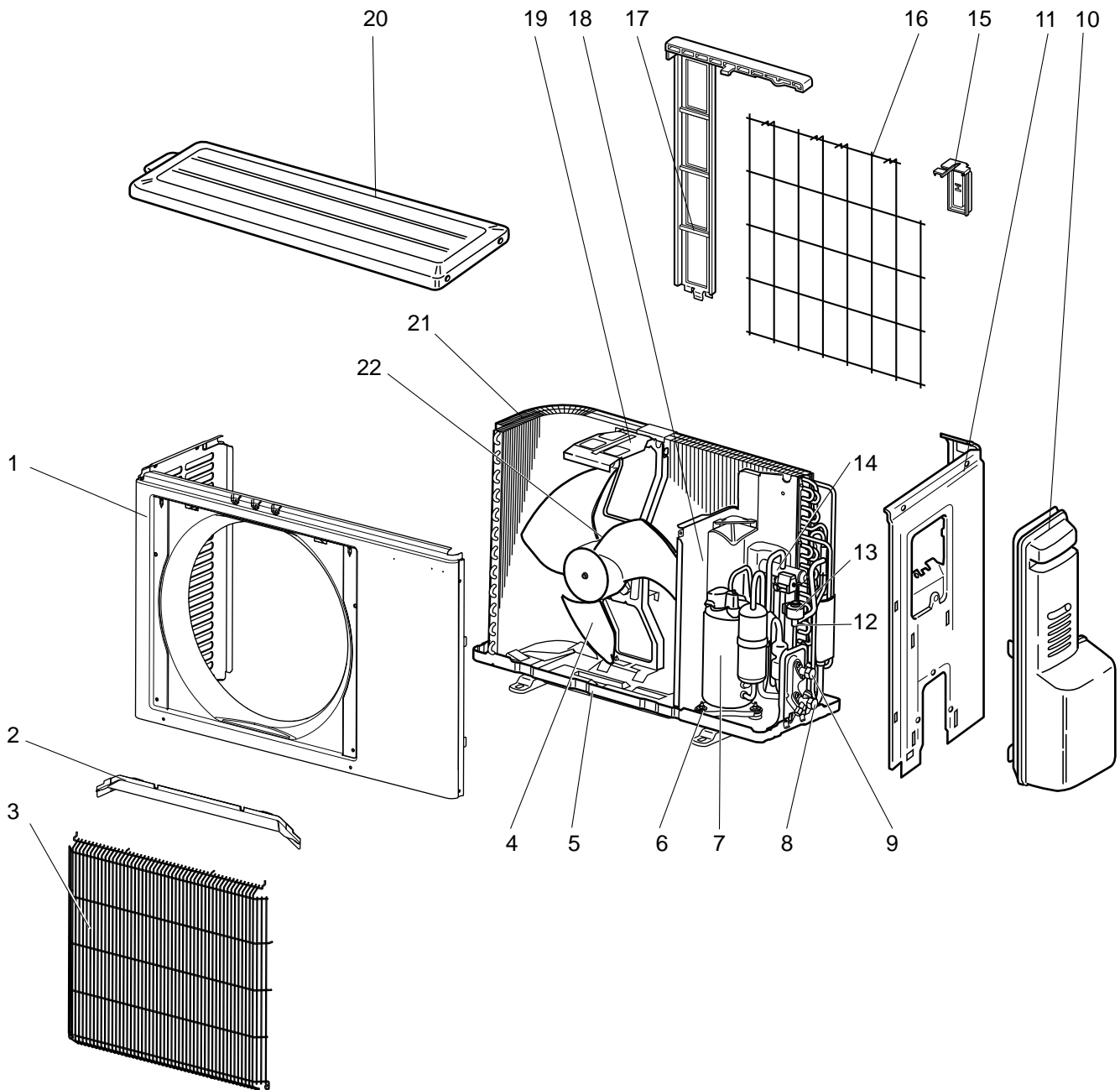
1. RoHS PARTS LIST 2

SERVICE MANUAL (OBH767)

NOTE:
RoHS compliant products have <G> mark on the spec name plate.

MUZ-LN25VG

1-1. OUTDOOR UNIT STRUCTURAL PARTS AND FUNCTIONAL PARTS



RoHS PARTS LIST

1-1. OUTDOOR UNIT STRUCTURAL PARTS AND FUNCTIONAL PARTS

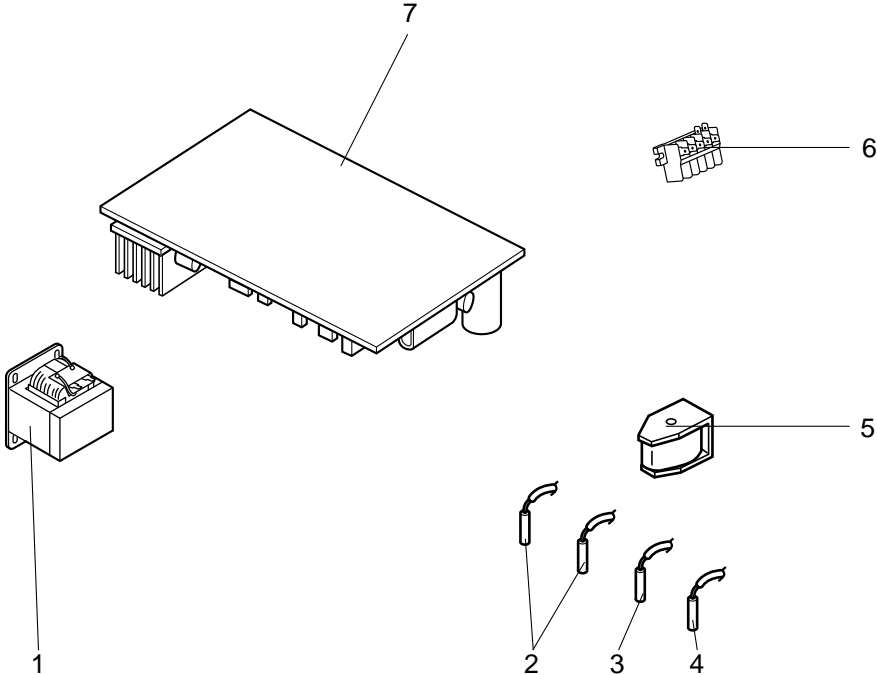
Part numbers that are circled are not shown in the illustration.

No.	RoHS	Part No.	Part Name	Symbol in Wiring Diagram	Q'ty/unit			Remarks
					MUZ-LN25			
					VG- ^[E1]	VG- ^[ER1]	VG- ^[ET1]	
1	G	E12 J63 232	CABINET		1	1	1	
2	G	E12 J63 531	ICE GUARD		1	1	1	
3	G	E12 Y84 521	GRILLE		1	1	1	
4	G	E12 927 501	PROPELLER FAN		1	1	1	
5	G	E12 Y84 290	BASE		1	1	1	
6	G	E12 065 506	COMPRESSOR RUBBER SET		3	3	3	3 RUBBERS/SET
7	G	E12 R81 900	COMPRESSOR	MC	1	1	1	KVB073FYXMC
8	G	E12 T66 661	STOP VALVE (GAS)		1	1	1	ø9.52
9	G	E12 T66 662	STOP VALVE (LIQUID)		1	1	1	ø6.35
10	G	E12 L59 245	SERVICE PANEL		1	1	1	
11	G	E12 G11 233	BACK PANEL		1	1	1	
12	G	E12 Y84 640	EXPANSION VALVE		1	1	1	
13	G	E12 Y84 493	EXPANSION VALVE COIL	LEV	1	1	1	
14	G	E12 R81 961	4-WAY VALVE		1	1	1	
15	G	E12 930 079	THERMO HOLDER		1	1	1	
16	G	E12 930 525	CONDENSER WIRE NET		1	1	1	
17	G	E12 930 523	CONDENSER NET		1	1	1	
18	G	E12 G11 293	SEPARATOR		1	1	1	
19	G	E12 929 515	MOTOR SUPPORT		1	1	1	
20	G	E12 L85 297	TOP PANEL		1	1	1	
21	G	E12 Y84 630	OUTDOOR HEAT EXCHANGER		1	1	1	
22	G	E12 Y84 301	OUTDOOR FAN MOTOR	MF	1	1	1	RC0J50-□□
⑳	G	E12 J47 936	CAPILLARY TUBE		1	1	1	ø4.0×ø2.4×240
㉑	G	E12 838 704	DRAIN SOCKET		1	1	1	

RoHS PARTS LIST

MUZ-LN25VG

1-2. OUTDOOR UNIT ELECTRICAL PARTS



RoHS PARTS LIST

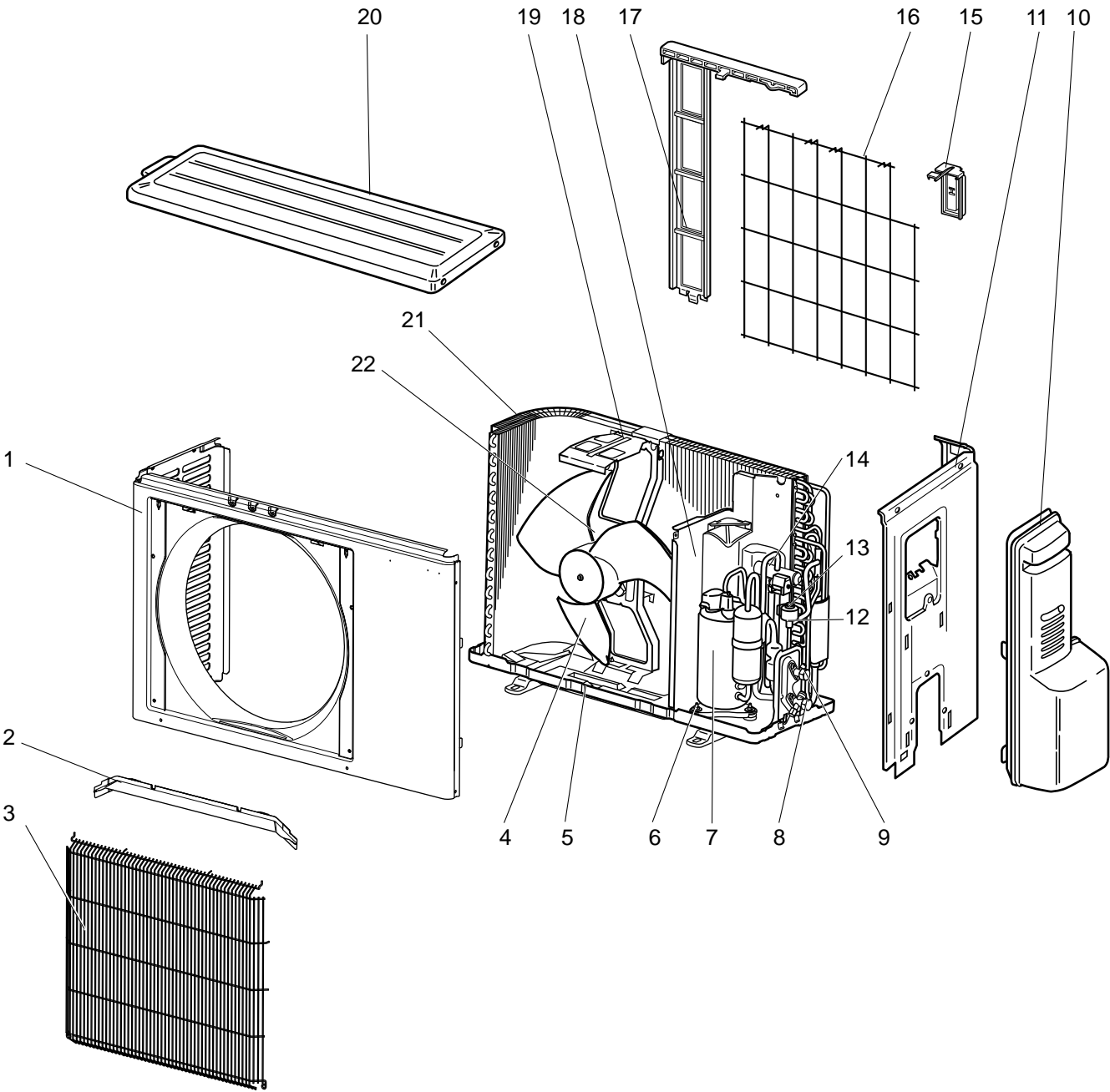
1-2. OUTDOOR UNIT ELECTRICAL PARTS

No.	RoHS	Part No.	Part Name	Symbol in Wiring Diagram	Q'ty/unit			Remarks
					MUZ-LN25			
					VG- [E1]	VG- [ER1]	VG- [ET1]	
1	G	E12 G11 337	REACTOR	L61	1	1	1	
2	G	E12 R81 306	THERMISTOR SET	RT61, RT62	1	1	1	DEFROST, DISCHARGE
3	G	E12 927 308	AMBIENT TEMPERATURE THERMISTOR	RT65	1	1	1	
4	G	E12 P72 307	OUTDOOR HEAT EXCHANGER TEMPERATURE THERMISTOR	RT68	1	1	1	
5	G	E12 R81 490	R.V. COIL	21S4	1	1	1	
6	G	E12 T95 374	TERMINAL BLOCK	TB1	1	1	1	5 P
7	G	E12 Y84 451	INVERTER P.C. BOARD		1	1	1	Including heat sink and RT64

RoHS PARTS LIST

MUZ-LN35VG

1-3. OUTDOOR UNIT STRUCTURAL PARTS AND FUNCTIONAL PARTS



RoHS PARTS LIST

1-3. OUTDOOR UNIT STRUCTURAL PARTS AND FUNCTIONAL PARTS

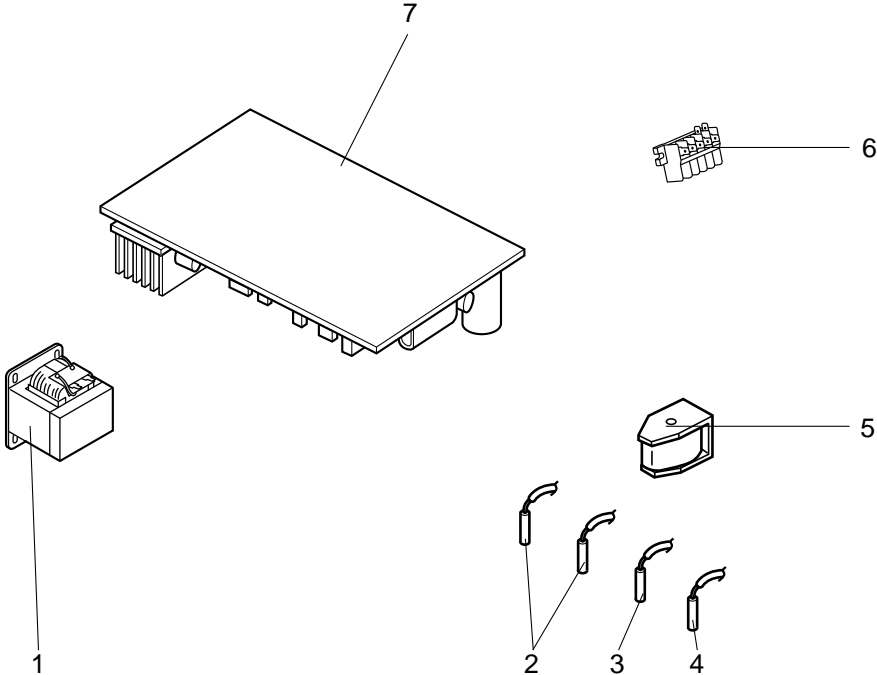
Part numbers that are circled are not shown in the illustration.

No.	RoHS	Part No.	Part Name	Symbol in Wiring Diagram	Q'ty/unit			Remarks
					MUZ-LN35			
					VG- <small>E1</small>	VG- <small>ER1</small>	VG- <small>ET1</small>	
1	G	E12 J63 232	CABINET		1	1	1	
2	G	E12 J63 531	ICE GUARD		1	1	1	
3	G	E12 Y84 521	GRILLE		1	1	1	
4	G	E12 927 501	PROPELLER FAN		1	1	1	
5	G	E12 Y84 290	BASE		1	1	1	
6	G	E12 C34 506	COMPRESSOR RUBBER SET		3	3	3	3 RUBBERS/SET
7	G	E12 Y85 900	COMPRESSOR	MC	1	1	1	SVB092FBAMT
8	G	E12 T66 661	STOP VALVE (GAS)		1	1	1	ø9.52
9	G	E12 T66 662	STOP VALVE (LIQUID)		1	1	1	ø6.35
10	G	E12 L59 245	SERVICE PANEL		1	1	1	
11	G	E12 G15 233	BACK PANEL		1	1	1	
12	G	E12 Y84 640	EXPANSION VALVE		1	1	1	
13	G	E12 Y84 493	EXPANSION VALVE COIL	LEV	1	1	1	
14	G	E12 R81 961	4-WAY VALVE		1	1	1	
15	G	E12 930 079	THERMO HOLDER		1	1	1	
16	G	E12 930 525	CONDENSER WIRE NET		1	1	1	
17	G	E12 930 523	CONDENSER NET		1	1	1	
18	G	E12 G11 293	SEPARATOR		1	1	1	
19	G	E12 929 515	MOTOR SUPPORT		1	1	1	
20	G	E12 L85 297	TOP PANEL		1	1	1	
21	G	E12 Y84 630	OUTDOOR HEAT EXCHANGER		1	1	1	
22	G	E12 Y84 301	OUTDOOR FAN MOTOR	MF	1	1	1	RC0J50-□□
⑳	G	E12 J47 936	CAPILLARY TUBE		1	1	1	ø4.0×ø2.4×240
㉑	G	E12 838 704	DRAIN SOCKET		1	1	1	

RoHS PARTS LIST

MUZ-LN35VG

1-4. OUTDOOR UNIT ELECTRICAL PARTS



RoHS PARTS LIST

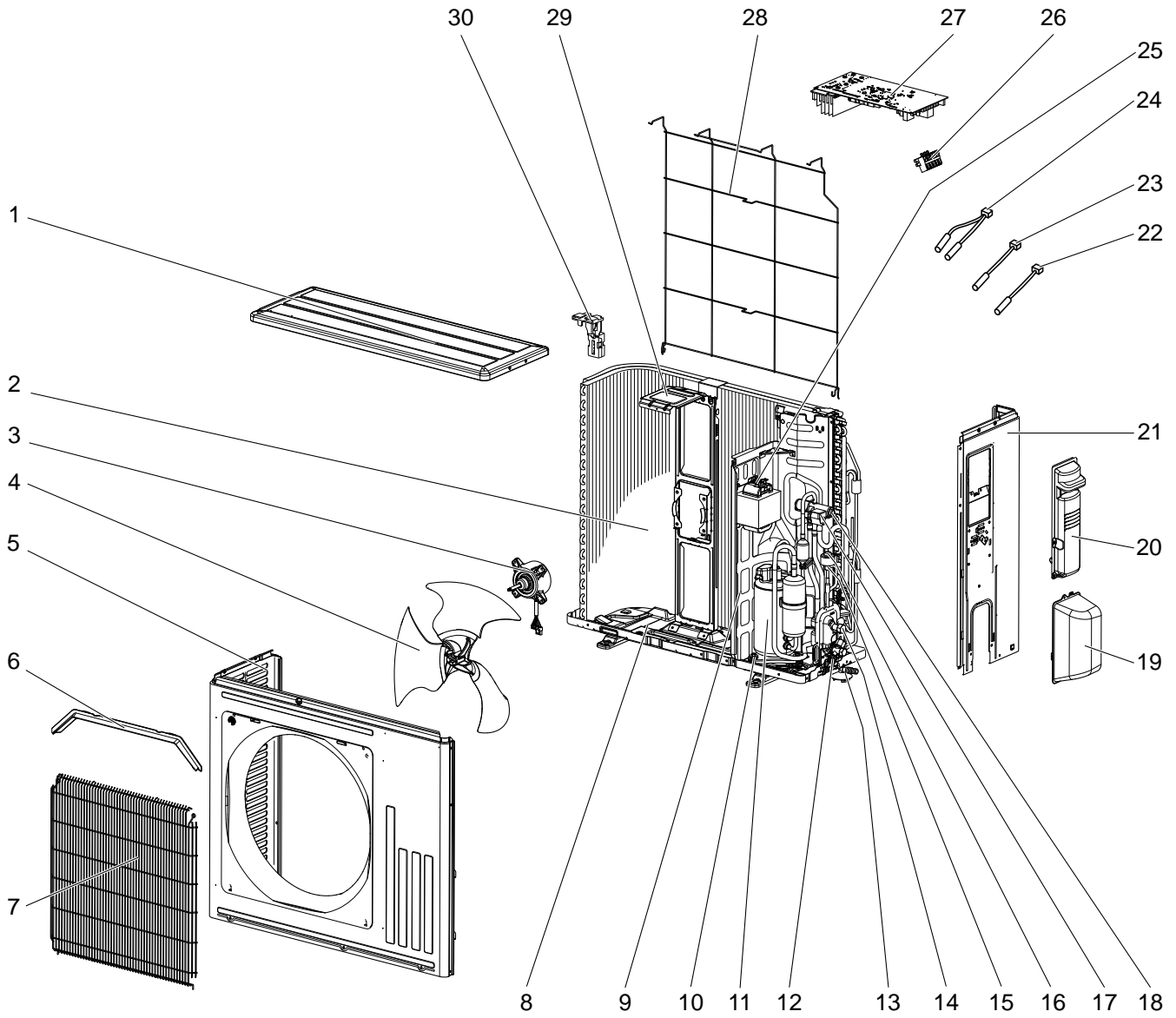
1-4. OUTDOOR UNIT ELECTRICAL PARTS

No.	RoHS	Part No.	Part Name	Symbol in Wiring Diagram	Q'ty/unit			Remarks
					MUZ-LN35			
					VG- [E1]	VG- [ER1]	VG- [ET1]	
1	G	E12 G11 337	REACTOR	L61	1	1	1	
2	G	E12 R81 306	THERMISTOR SET	RT61, RT62	1	1	1	DEFROST, DISCHARGE
3	G	E12 927 308	AMBIENT TEMPERATURE THERMISTOR	RT65	1	1	1	
4	G	E12 P72 307	OUTDOOR HEAT EXCHANGER TEMPERATURE THERMISTOR	RT68	1	1	1	
5	G	E12 R81 490	R.V. COIL	21S4	1	1	1	
6	G	E12 T95 374	TERMINAL BLOCK	TB1	1	1	1	5 P
7	G	E12 Y85 451	INVERTER P.C. BOARD		1	1	1	Including heat sink and RT64

RoHS PARTS LIST

MUZ-LN50VG

1-5. OUTDOOR UNIT STRUCTURAL PARTS, ELECTRICAL PARTS AND FUNCTIONAL PARTS



RoHS PARTS LIST

1-5. OUTDOOR UNIT STRUCTURAL PARTS, ELECTRICAL PARTS AND FUNCTIONAL PARTS

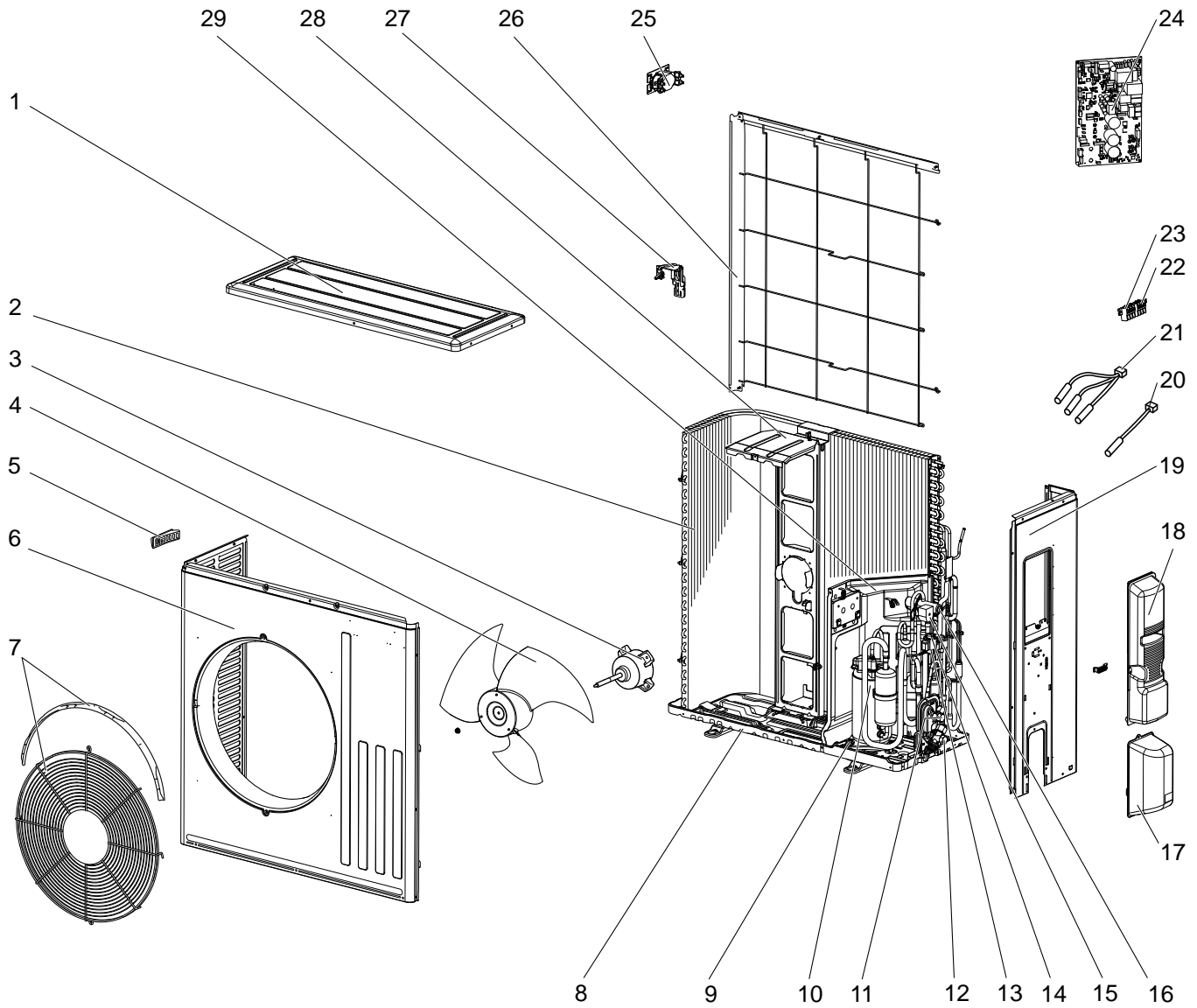
Part numbers that are circled are not shown in the illustration.

No.	RoHS	Part No.	Part Name	Symbol in Wiring Diagram	Q'ty/unit			Remarks
					MUZ-LN50			
					VG- [E1]	VG- [ER1]	VG- [ET1]	
1	G	E12 Y86 297	TOP PANEL		1	1	1	
2	G	E12 Y86 630	OUTDOOR HEAT EXCHANGER		1	1	1	
3	G	E12 Y86 301	OUTDOOR FAN MOTOR	MF	1	1	1	RC0J50-□□
4	G	E12 Y86 501	PROPELLER FAN		1	1	1	
5	G	E12 Y86 232	CABINET		1	1	1	
6	G	E12 Y86 531	ICE GUARD		1	1	1	
7	G	E12 Y86 521	GRILLE		1	1	1	
8	G	E12 Y84 290	BASE		1	1	1	
9	G	E12 Y86 293	SEPARATOR		1	1	1	
10	G	E12 C34 506	COMPRESSOR RUBBER SET		3	3	3	3 RUBBERS/SET
11	G	E12 R83 900	COMPRESSOR	MC	1	1	1	SVB130FBBMT
12	G	E12 Y86 661	STOP VALVE (GAS)		1	1	1	ø9.52
13	G	E12 838 704	DRAIN SOCKET		1	1	1	
14	G	E12 Y86 662	STOP VALVE (LIQUID)		1	1	1	ø6.35
15	G	E12 Y84 640	EXPANSION VALVE		1	1	1	
16	G	E12 Y84 493	EXPANSION VALVE COIL	LEV	1	1	1	
17	G	E12 Y86 490	R.V. COIL	21S4	1	1	1	
18	G	E12 J44 961	4-WAY VALVE		1	1	1	
19	G	E12 Y86 650	VALVE COVER		1	1	1	
20	G	E12 Y86 245	SERVICE PANEL		1	1	1	
21	G	E12 Y86 233	BACK PANEL (OUT)		1	1	1	
22	G	E12 Y86 309	AMBIENT TEMPERATURE THERMISTOR	RT65	1	1	1	
23	G	E12 C34 307	OUTDOOR HEAT EXCHANGER TEMPERATURE THERMISTOR	RT68	1	1	1	
24	G	E12 Y86 306	THERMISTOR SET	RT61, RT62	1	1	1	DEFROST, DISCHARGE
25	G	E12 H21 337	REACTOR	L61	1	1	1	
26	G	E12 T95 374	TERMINAL BLOCK	TB1	1	1	1	5 P
27	G	E12 Y86 451	INVERTER P.C. BOARD		1	1	1	Including heat sink and RT64
28	G	E12 Y86 525	CONDENSER WIRE NET		1	1	1	
29	G	E12 Y86 515	MOTOR SUPPORT		1	1	1	
30	G	E12 22A 079	THERMO HOLDER		1	1	1	
③1	G	E12 J47 936	CAPILLARY TUBE		1	1	1	ø4.0 × ø2.4 × 240
③2	G	E12 F35 936	CAPILLARY TUBE		2	2	2	ø3.0 × ø2.0 × 210

RoHS PARTS LIST

MUZ-LN60VG

1-6. OUTDOOR UNIT STRUCTURAL PARTS, ELECTRICAL PARTS AND FUNCTIONAL PARTS



RoHS PARTS LIST

1-6. OUTDOOR UNIT STRUCTURAL PARTS, ELECTRICAL PARTS AND FUNCTIONAL PARTS

Part numbers that are circled are not shown in the illustration.

No.	RoHS	Part No.	Part Name	Symbol in Wiring Diagram	Q'ty/unit			Remarks
					MUZ-LN60			
					VG- [E1]	VG- [ERT]	VG- [ET1]	
1	G	E12 L87 297	TOP PANEL		1	1	1	
2	G	E12 Y87 630	OUTDOOR HEAT EXCHANGER		1	1	1	
3	G	E12 F28 301	OUTDOOR FAN MOTOR	MF	1	1	1	RC0J60-□□
4	G	E12 F28 501	PROPELLER FAN		1	1	1	
5	G	E12 817 009	HANDLE		1	1	1	
6	G	E12 R13 232	CABINET		1	1	1	
7	G	E12 Y87 521	FAN GUARD		1	1	1	Including ice guard
8	G	E12 F28 290	BASE		1	1	1	
9	G	E12 C34 506	COMPRESSOR RUBBER SET		3	3	3	3 RUBBERS/SET
10	G	E12 R86 900	COMPRESSOR	MC	1	1	1	SVB172FCKMT
11	G	E12 G16 662	STOP VALVE (LIQUID)		1	1	1	ø6.35
12	G	E12 G16 661	STOP VALVE (GAS)		1	1	1	ø12.7
13	G	E12 Y84 640	EXPANSION VALVE		1	1	1	
14	G	E12 Y87 493	EXPANSION VALVE COIL	LEV	1	1	1	
15	G	E12 R84 490	R.V. COIL	21S4	1	1	1	
16	G	E12 J44 961	4-WAY VALVE		1	1	1	
17	G	E12 F28 650	VALVE COVER		1	1	1	
18	G	E12 Y87 245	SERVICE PANEL		1	1	1	
19	G	E12 J52 233	BACK PANEL (OUT)		1	1	1	
20	G	E12 G16 309	AMBIENT TEMPERATURE THERMISTOR	RT65	1	1	1	
21	G	E12 R84 308	THERMISTOR SET	RT61,RT62, RT68	1	1	1	DEFROST, DISCHARGE, OUTDOOR HEAT EXCHANGER TEMPERATURE
22	G	E12 F29 374	TERMINAL BLOCK	TB1	1	1	1	3 P
23	G	E12 T16 374	TERMINAL BLOCK	TB2	1	1	1	3 P
24	G	E12 Y87 451	INVERTER P.C. BOARD		1	1	1	Including heat sink and RT64
25	G	E12 R84 337	REACTOR	L	1	1	1	
26	G	E12 L87 523	CONDENSER NET		1	1	1	
27	G	E12 F28 079	THERMO HOLDER		1	1	1	
28	G	E12 F28 515	MOTOR SUPPORT		1	1	1	
29	G	E12 R86 293	SEPARATOR		1	1	1	
30	G	E12 527 936	CAPILLARY TUBE		1	1	1	ø4.0 × ø2.4 × 100
31	G	E12 F28 704	DRAIN SOCKET		1	1	1	

mitsubishi MITSUBISHI ELECTRIC CORPORATION

HEAD OFFICE: TOKYO BUILDING, 2-7-3, MARUNOUCHI, CHIYODA-KU, TOKYO 100-8310, JAPAN

© Copyright 2016 MITSUBISHI ELECTRIC CORPORATION

Published: Dec. 2016. No. OBB767

Made in Japan

Specifications are subject to change without notice.