

# SERVICE PARTS LIST FOR MITSUBISHI ELECTRIC PACKAGED AIR-CONDITIONERS

Series : PUHY-EP•Y(S)LM-A1(-BS)

For use with the R410A

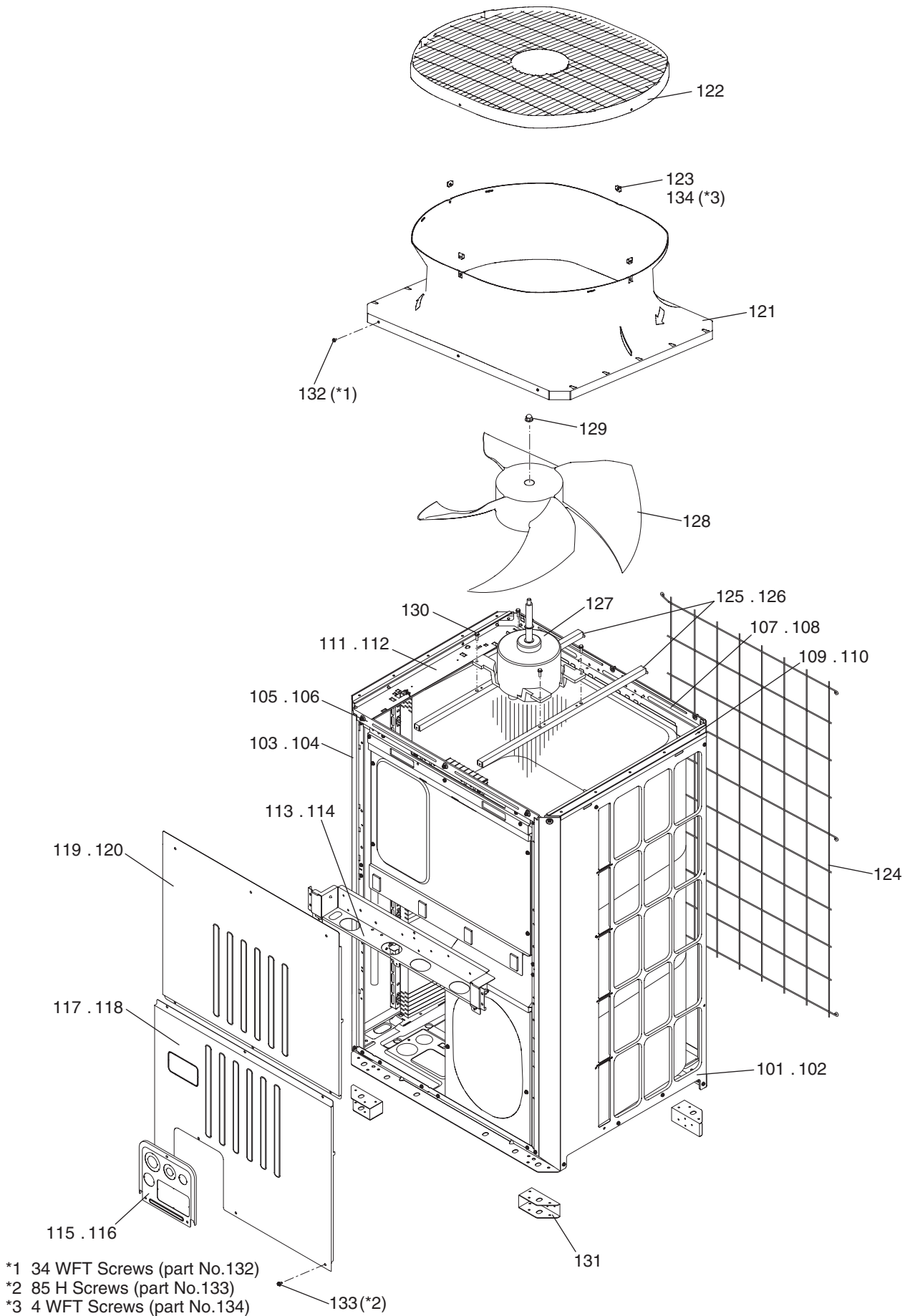
May 2015  
BWE015090

INDEX
PUHY-EP200YLM-A1
PUHY-EP200YLM-A1-BS
PUHY-EP250YLM-A1
PUHY-EP250YLM-A1-BS
PUHY-EP300YLM-A1
PUHY-EP300YLM-A1-BS
PUHY-EP350YLM-A1
PUHY-EP350YLM-A1-BS
PUHY-EP400YLM-A1
PUHY-EP400YLM-A1-BS
PUHY-EP450YLM-A1
PUHY-EP450YLM-A1-BS
PUHY-EP500YLM-A1
PUHY-EP500YLM-A1-BS

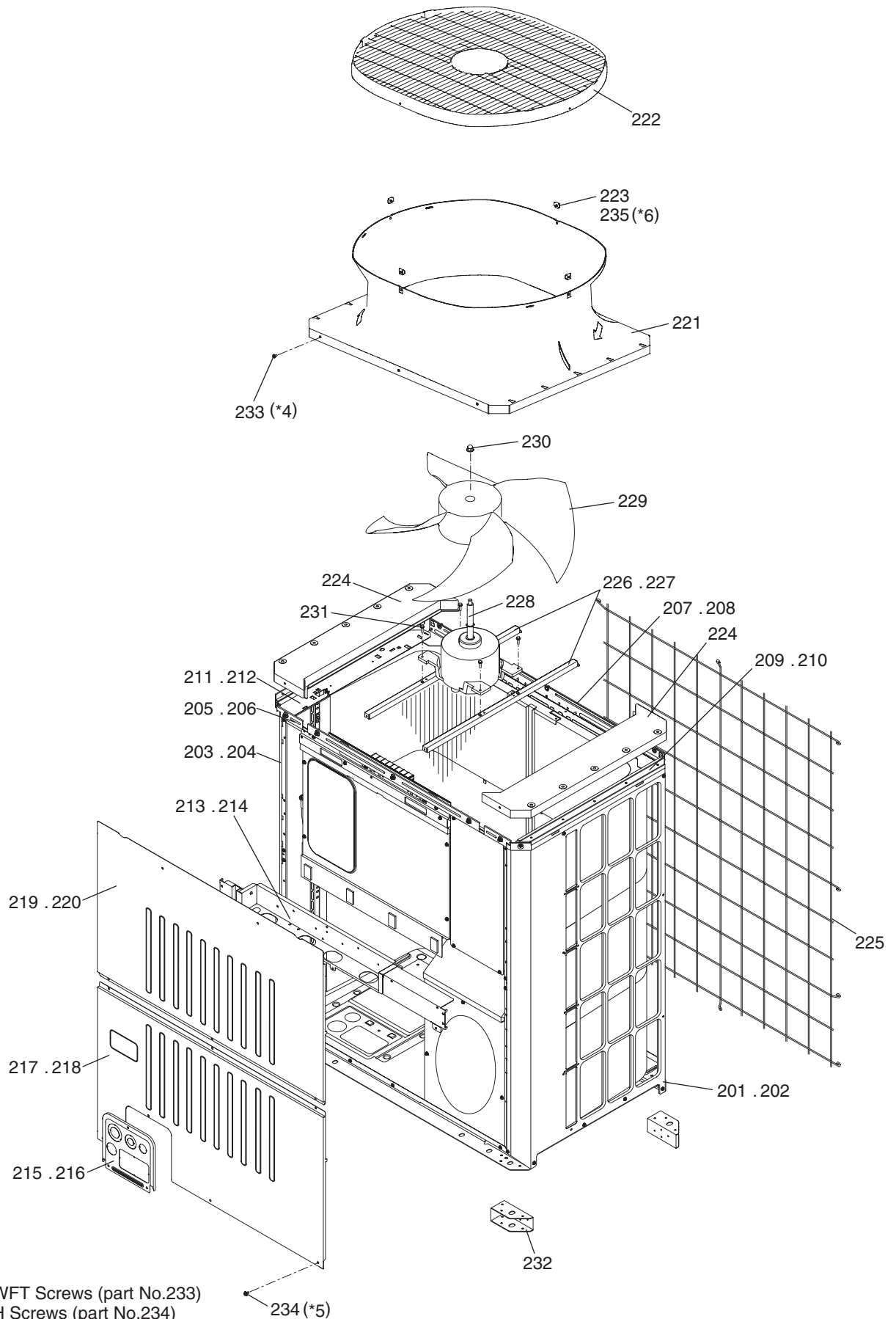
Refer to the next page for the package names.

## The Package name list

<b>PUHY-EP500YSLM-A1(-BS)</b>	[PUHY-EP250YLM-A1 (-BS) +PUHY-EP250YLM-A1 (-BS)]
<b>PUHY-EP550YSLM-A1(-BS)</b>	[PUHY-EP250YLM-A1 (-BS) +PUHY-EP300YLM-A1 (-BS)]
<b>PUHY-EP600YSLM-A1(-BS)</b>	[PUHY-EP300YLM-A1 (-BS) +PUHY-EP300YLM-A1 (-BS)]
<b>PUHY-EP650YSLM-A1(-BS)</b>	[PUHY-EP200YLM-A1 (-BS) +PUHY-EP200YLM-A1 (-BS) +PUHY-EP250YLM-A1 (-BS)]
<b>PUHY-EP700YSLM-A1(-BS)</b>	[PUHY-EP200YLM-A1 (-BS) +PUHY-EP200YLM-A1 (-BS) +PUHY-EP300YLM-A1 (-BS)]
<b>PUHY-EP750YSLM-A1(-BS)</b>	[PUHY-EP200YLM-A1 (-BS) +PUHY-EP250YLM-A1 (-BS) +PUHY-EP300YLM-A1 (-BS)]
<b>PUHY-EP800YSLM-A1(-BS)</b>	[PUHY-EP200YLM-A1 (-BS) +PUHY-EP300YLM-A1 (-BS) +PUHY-EP300YLM-A1 (-BS)]
<b>PUHY-EP850YSLM-A1(-BS)</b>	[PUHY-EP250YLM-A1 (-BS) +PUHY-EP300YLM-A1 (-BS) +PUHY-EP300YLM-A1 (-BS)]
<b>PUHY-EP900YSLM-A1(-BS)</b>	[PUHY-EP300YLM-A1 (-BS) +PUHY-EP300YLM-A1 (-BS) +PUHY-EP300YLM-A1 (-BS)]
<b>PUHY-EP950YSLM-A1(-BS)</b>	[PUHY-EP300YLM-A1 (-BS) +PUHY-EP300YLM-A1 (-BS) +PUHY-EP350YLM-A1 (-BS)]
<b>PUHY-EP1000YSLM-A1(-BS)</b>	[PUHY-EP300YLM-A1 (-BS) +PUHY-EP300YLM-A1 (-BS) +PUHY-EP400YLM-A1 (-BS)]
<b>PUHY-EP1050YSLM-A1(-BS)</b>	[PUHY-EP300YLM-A1 (-BS) +PUHY-EP350YLM-A1 (-BS) +PUHY-EP400YLM-A1 (-BS)]
<b>PUHY-EP1100YSLM-A1(-BS)</b>	[PUHY-EP350YLM-A1 (-BS) +PUHY-EP350YLM-A1 (-BS) +PUHY-EP400YLM-A1 (-BS)]
<b>PUHY-EP1150YSLM-A1(-BS)</b>	[PUHY-EP350YLM-A1 (-BS) +PUHY-EP350YLM-A1 (-BS) +PUHY-EP450YLM-A1 (-BS)]
<b>PUHY-EP1200YSLM-A1(-BS)</b>	[PUHY-EP350YLM-A1 (-BS) +PUHY-EP400YLM-A1 (-BS) +PUHY-EP450YLM-A1 (-BS)]
<b>PUHY-EP1250YSLM-A1(-BS)</b>	[PUHY-EP350YLM-A1 (-BS) +PUHY-EP450YLM-A1 (-BS) +PUHY-EP450YLM-A1 (-BS)]
<b>PUHY-EP1300YSLM-A1(-BS)</b>	[PUHY-EP400YLM-A1 (-BS) +PUHY-EP450YLM-A1 (-BS) +PUHY-EP450YLM-A1 (-BS)]
<b>PUHY-EP1350YSLM-A1(-BS)</b>	[PUHY-EP450YLM-A1 (-BS) +PUHY-EP450YLM-A1 (-BS) +PUHY-EP450YLM-A1 (-BS)]



No.	Part No.	G : RoHS Apply Only W : RoHS Apply by Running Change	Part Name	Spec.	PUHY-EP200YLM-A1	PUHY-EP200YLM-A1-BS	PUHY-EP250YLM-A1	PUHY-EP250YLM-A1-BS	Dwg. No.	Notes for the models	Revision info.
101	R63 052 652	G	Panel R		1		1		KB02A370G05		
102	R63 053 652	G	Panel R	BS		1		1	KB02A370G06		
103	R63 050 652	G	Panel L		1		1		KB02A369G07		
104	R63 051 652	G	Panel L	BS		1		1	KB02A369G08		
105	R61 001 161	G	Frame F		1		1		KD02G738H02		
106	R61 005 161	G	Frame F	BS		1		1	KD02G738G07		
107	R61 014 160	G	Frame assy B		1		1		KJ00L534G01		
108	R61 015 160	G	Frame assy B	BS		1		1	KJ00L534G02		
109	R61 105 162	G	Frame assy LR		1		1		KJ00L538G01		
110	R61 106 162	G	Frame assy LR	BS		1		1	KJ00L538G02		
111	R61 016 160	G	Frame assy L		1		1		KJ00L537G01		
112	R61 017 160	G	Frame assy L	BS		1		1	KJ00L537G02		
113	R63 077 162	G	Frame assy M		1		1		KD00L159G07		
114	R63 080 162	G	Frame assy M	BS		1		1	KD00L159G08		
115	R61 095 690	G	Piping cover		1		1		KB02L001G07		
116	R61 094 690	G	Piping cover	BS		1		1	KB02L001G08		
117	R61 208 651	G	Panel FB		1		1		KB02J835H06		
118	R61 209 651	G	Panel FB	BS		1		1	KB02J835G10		
119	R61 177 651	G	Panel FU		1		1		KB02J839H01		
120	R61 178 651	G	Panel FU	BS		1		1	KB02J839G02		
121	R61 004 119	G	Bell mouth		1	1	1	1	KB25A368H03		
122	R11 003 009	G	Fan guard		1	1	1	1	KB25V019H01		
123	R61 009 669	G	Plate fan guard		4	4	4	4	KD02D205H02		
124	R63 008 611	G	Fin guard B		1	1	1	1	KB07N273G01		
125	R61 016 140	G	Base fan		2		2		KD02D026H01		
126	R61 017 140	G	Base fan	BS		2		2	KD02D026G04		
127	R61 167 220	G	Motor	L-MW-920-B4-1	1	1	1	1	P780225X02		
128	R63 4H6 300	G	Fan		1	1	1	1	KB25A009H04		
129	R63 4H6 122	G	Box nut	M12 CH	1	1	1	1	P552000X01		
130	R61 028 087	G	Upset screw	M6 x 22	4	4	4	4	P516049X01		
131	R61 016 130	G	Attachment leg		4	4	4	4	KD02T773G01		
132	R63 006 087	G	WFT screw	M5 x 12 (30pcs)	2	2	2	2	KB00H418G01	*1	
133	R63 007 087	G	H screw	M5 x 10 KNURLED (30pcs)	3	3	3	3	KB00H418G14	*2	
134	R63 029 087	G	WFT screw	M5 x 16 (10pcs)	1	1	1	1	KD00H026G01	*3	

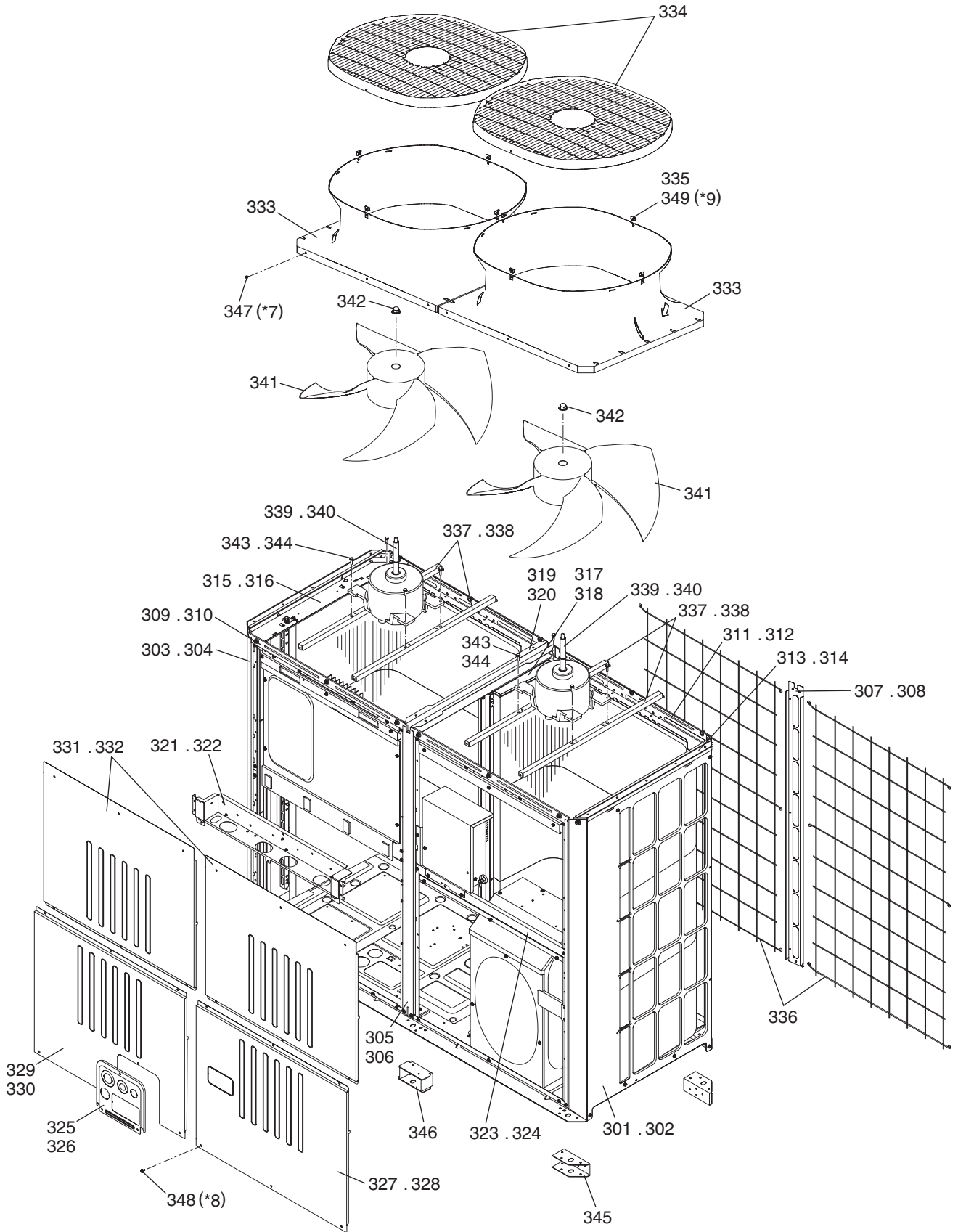


- \*4 42 WFT Screws (part No.233)
- \*5 89 H Screws (part No.234)
- \*6 4 WFT Screws (part No.235)

No.	Part No.	G : RoHS Apply Only W : RoHS Apply by Running Change	Part Name	Spec.							Dwg. No.	Notes for the models	Revision info.
201	R63 052 652	G	Panel R			1	1				KB02A370G05		
202	R63 053 652	G	Panel R	BS			1	1			KB02A370G06		
203	R63 050 652	G	Panel L			1	1				KB02A369G07		
204	R63 051 652	G	Panel L	BS			1	1			KB02A369G08		
205	R61 003 161	G	Frame F			1	1				KD02G739H02		
206	R61 006 161	G	Frame F	BS			1	1			KD02G739G07		
207	R61 018 160	G	Frame assy B			1	1				KJ00L535G01		
208	R61 019 160	G	Frame assy B	BS			1	1			KJ00L535G02		
209	R61 105 162	G	Frame assy LR			1	1				KJ00L538G01		
210	R61 106 162	G	Frame assy LR	BS			1	1			KJ00L538G02		
211	R61 016 160	G	Frame assy L			1	1				KJ00L537G01		
212	R61 017 160	G	Frame assy L	BS			1	1			KJ00L537G02		
213	R61 083 162	G	Frame assy M			1	1				KD00L235G04		
214	R61 084 162	G	Frame assy M	BS			1	1			KD00L235G05		
215	R61 095 690	G	Piping cover			1	1				KB02L001G07		
216	R61 094 690	G	Piping cover	BS			1	1			KB02L001G08		
217	R61 210 651	G	Panel FB			1	1				KB02J836H03		
218	R61 211 651	G	Panel FB	BS			1	1			KB02J836G05		
219	R61 185 651	G	Panel FU			1	1				KB02J840H01		
220	R61 186 651	G	Panel FU	BS			1	1			KB02J840G02		
221	R61 004 119	G	Bell mouth			1	1	1	1		KB25A368H03		
222	R11 003 009	G	Fan guard			1	1	1	1		KB25V019H01		
223	R61 009 669	G	Plate fan guard			4	4	4	4		KD02D205H02		
224	R61 008 118	G	Fan guard cover			2	2	2	2		KB25J827H03		
225	R61 009 611	G	Fin guard B			1	1	1	1		KB07N274G01		
226	R61 016 140	G	Base fan			2	2				KD02D026H01		
227	R61 017 140	G	Base fan	BS			2	2			KD02D026G04		
228	R61 167 220	G	Motor	L-MW-920-B4-1		1	1	1	1		P780225X02		
229	R63 4H6 300	G	Fan			1	1	1	1		KB25A009H04		
230	R63 4H6 122	G	Box nut	M12 CH		1	1	1	1		P552000X01		
231	R61 028 087	G	Upset screw	M6 x 22		4	4	4	4		P516049X01		
232	R61 016 130	G	Attachment leg			4	4	4	4		KD02T773G01		
233	R63 006 087	G	WFT Screw	M5 x 12 (30pcs)		2	2	2	2		KB00H418G01	*4	
234	R63 007 087	G	H Screw	M5 x 10 KNURLED (30pcs)		3	3	3	3		KB00H418G14	*5	
235	R63 029 087	G	WFT Screw	M5 x 16 (10pcs)		1	1	1	1		KD00H026G01	*6	

PUHY-EP400YLM-A1(-BS)  
 PUHY-EP450YLM-A1(-BS)  
 PUHY-EP500YLM-A1(-BS)

EXTERNAL PARTS & BLOWER PARTS (3)



\*7 68 WFT Screws (part No.347)

\*8 123H Screws (part No.348)

\*9 8 WFT Screws (part No.349)

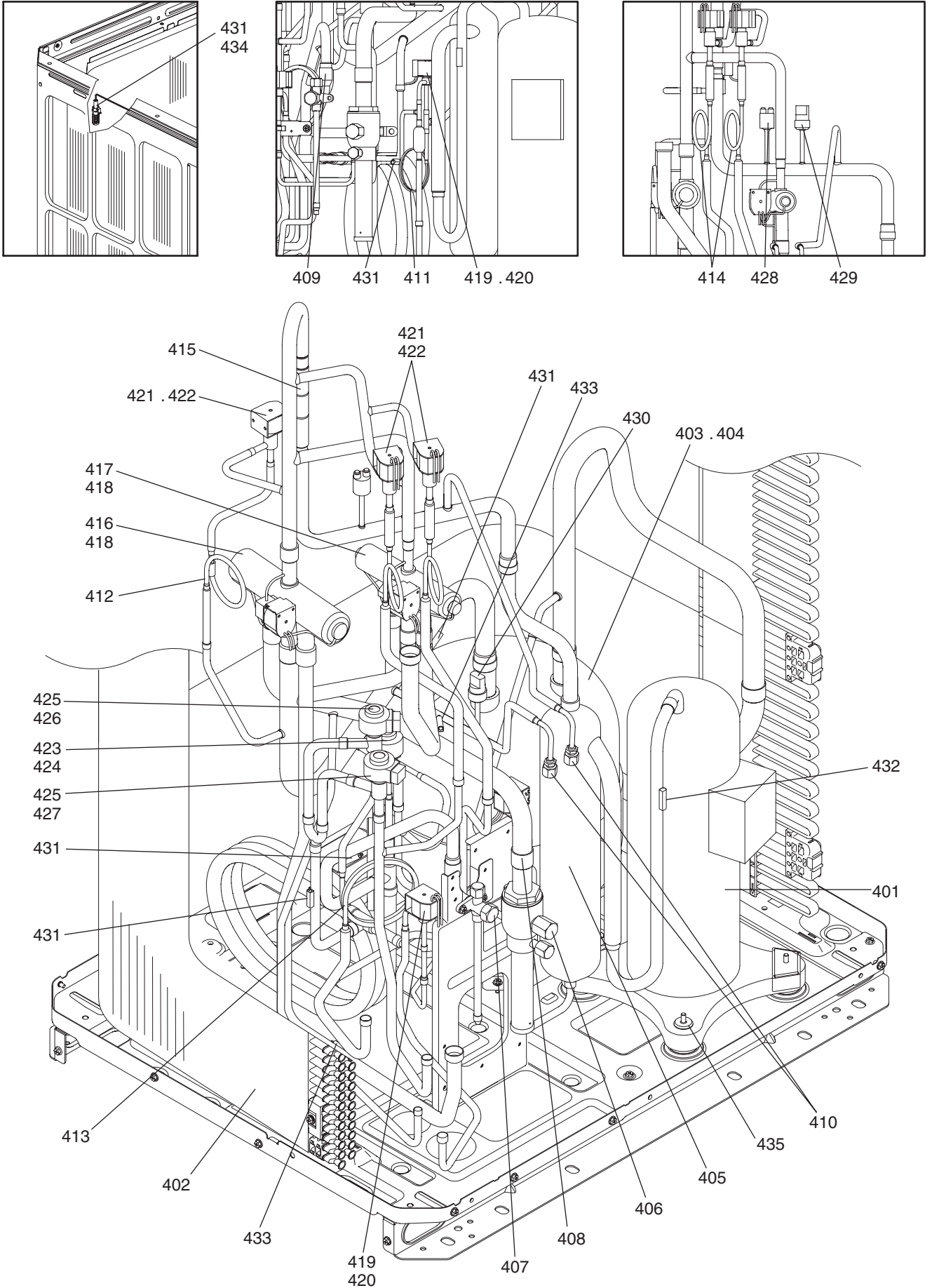
PUHY-EP400YLM-A1(-BS)  
 PUHY-EP450YLM-A1(-BS)  
 PUHY-EP500YLM-A1(-BS)

EXTERNAL PARTS & BLOWER PARTS (3)

No.	Part No.	G : RoHS Apply Only W : RoHS Apply by Running Change	Part Name	Spec.	PUHY-EP400YLM-A1	PUHY-EP400YLM-A1-BS	PUHY-EP450YLM-A1	PUHY-EP450YLM-A1-BS	PUHY-EP500YLM-A1	PUHY-EP500YLM-A1-BS	Dwg. No.	Notes for the models	Revision info.
301	R63 052 652	G	Panel R		1		1		1		KB02A370G05		
302	R63 053 652	G	Panel R	BS		1		1		1	KB02A370G06		
303	R63 050 652	G	Panel L		1		1		1		KB02A369G07		
304	R63 051 652	G	Panel L	BS		1		1		1	KB02A369G08		
305	R61 022 626	G	Pillar assy MF		1		1		1		KD00R845G09		
306	R61 023 626	G	Pillar assy MF	BS		1		1		1	KD00R845G10		
307	R61 030 626	G	Pillar assy MB		1		1		1		KD02M109G01		
308	R61 031 626	G	Pillar assy MB	BS		1		1		1	KD02M109G02		
309	R61 061 162	G	Frame assy F		1		1		1		KD00L182G03		
310	R61 094 162	G	Frame assy F	BS		1		1		1	KD00L182G07		
311	R61 020 160	G	Frame assy B		1		1		1		KJ00L536G01		
312	R61 021 160	G	Frame assy B	BS		1		1		1	KJ00L536G02		
313	R61 105 162	G	Frame assy LR		1		1		1		KJ00L538G01		
314	R61 106 162	G	Frame assy LR	BS		1		1		1	KJ00L538G02		
315	R61 016 160	G	Frame assy L		1		1		1		KJ00L537G01		
316	R61 017 160	G	Frame assy L	BS		1		1		1	KJ00L537G02		
317	R61 014 499	G	Plate HEX assy		1		1		1		KJ00L539G01		
318	R61 015 499	G	Plate HEX assy	BS		1		1		1	KJ00L539G02		
319	R61 072 162	G	Frame MT		1		1		1		KB02J833H01		
320	R61 073 162	G	Frame MT	BS		1		1		1	KB02J833G01		
321	R63 087 162	G	Frame assy M		1		1		1		KD00L159G09		
322	R63 088 162	G	Frame assy M	BS		1		1		1	KD00L159G10		
323	R61 058 162	G	Frame MR		1		1		1		KD02G743H04		
324	R61 059 162	G	Frame MR	BS		1		1		1	KD02G743G02		
325	R61 095 690	G	Piping cover		1		1		1		KB02L001G07		
326	R61 094 690	G	Piping cover	BS		1		1		1	KB02L001G08		
327	R61 212 651	G	Panel FBR		1		1		1		KB02J838H04		
328	R61 213 651	G	Panel FBR	BS		1		1		1	KB02J838G06		
329	R61 182 651	G	Panel FBL		1		1		1		KB02J837H02		
330	R61 183 651	G	Panel FBL	BS		1		1		1	KB02J837G04		
331	R61 177 651	G	Panel FU		2		2		2		KB02J839H01		
332	R61 178 651	G	Panel FU	BS		2		2		2	KB02J839G02		
333	R61 005 119	G	Bell mouth		2	2	2	2	2	2	KB25A367H03		
334	R11 003 009	G	Fan guard		2	2	2	2	2	2	KB25V019H01		
335	R61 009 669	G	Plate Fan guard		8	8	8	8	8	8	KD02D205H02		
336	R61 010 611	G	Fin guard B		2	2	2	2	2	2	KB07N272G01		
337	R61 016 140	G	Base fan		4		4		4		KD02D026H01		
338	R61 017 140	G	Base fan	BS		4		4		4	KD02D026G04		
339	R61 167 220	G	Motor	L-MW-920-B4-1	2	2	2	2			P780225X02		
340	R61 204 220	G	Motor	920W Y 415V					2	2	KB61A639G02		
341	R63 4H6 300	G	Fan		2	2	2	2	2	2	KB25A009H04		
342	R63 4H6 122	G	Box nut	M12 CH	2	2	2	2	2	2	P552000X01		
343	R61 028 087	G	Upset Screw	M6 x 22	8	8	8	8			P516049X01		
344	R63 014 087	G	Upset Screw	M6 x 10					8	8	P516047X01		
345	R61 016 130	G	Attachment leg		4	4	4	4	4	4	KD02T773G01		



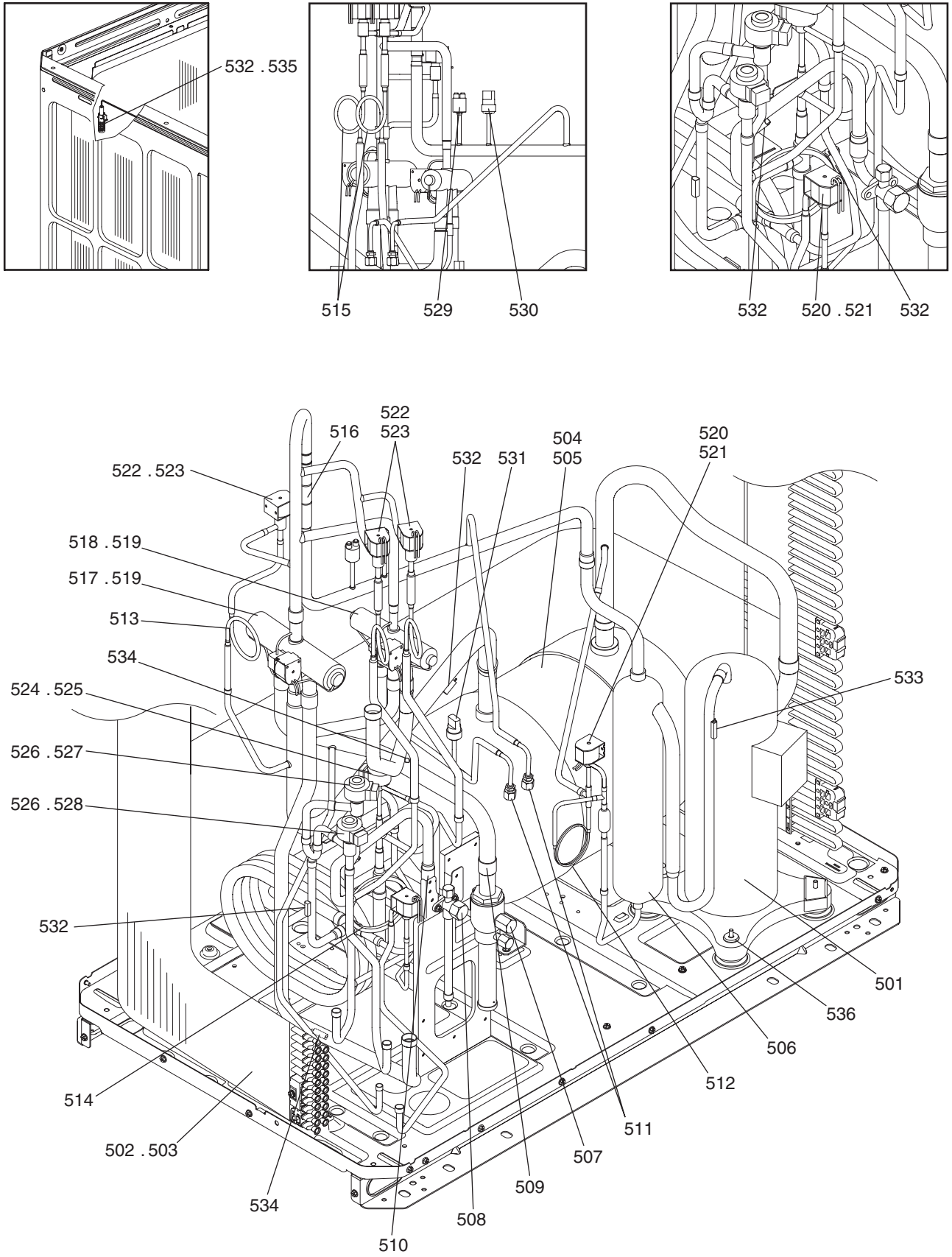




PUHY-EP200YLM-A1(-BS)  
 PUHY-EP250YLM-A1(-BS)

FUNCTIONAL PARTS (1)

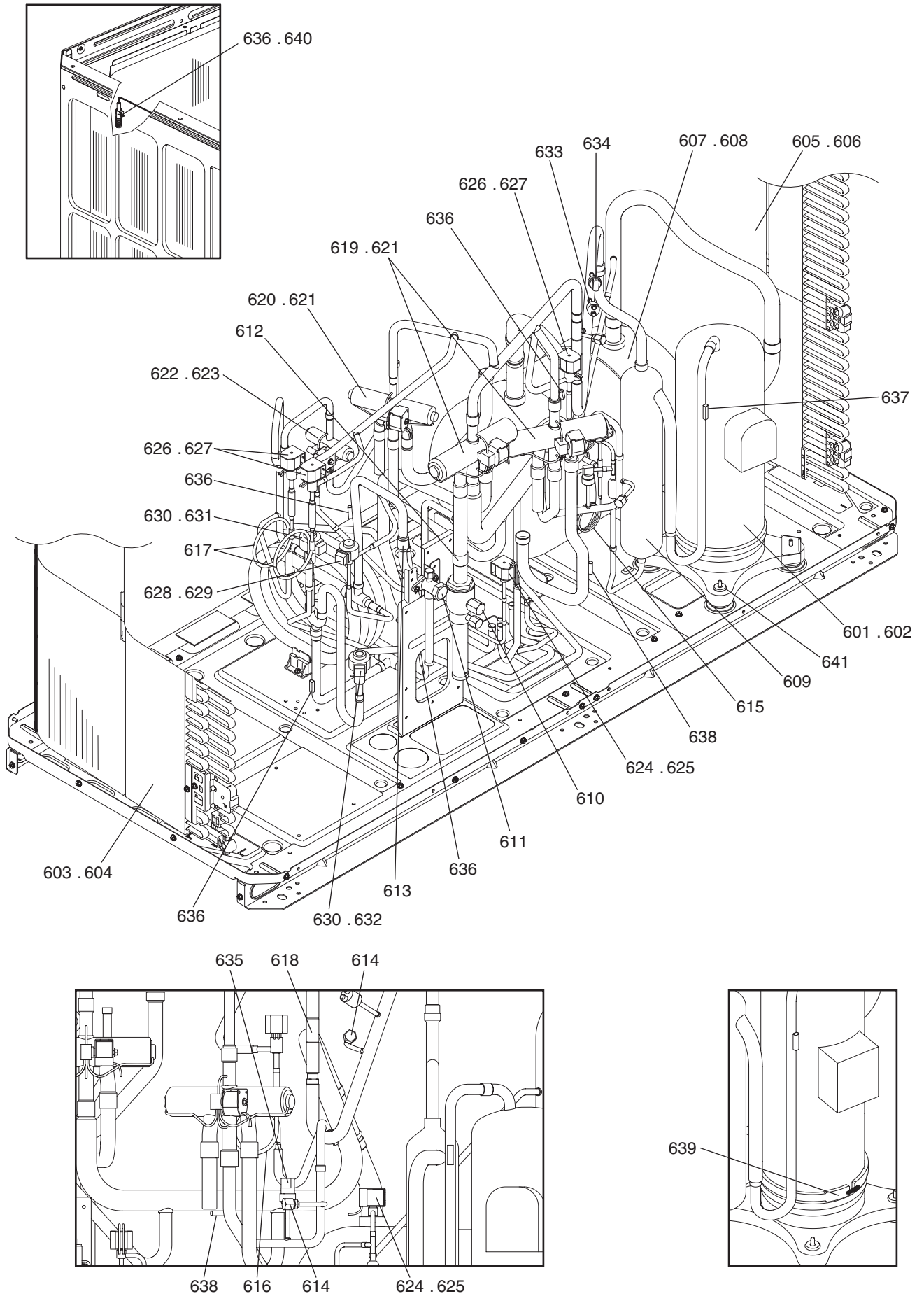
No.	Part No.	G : RoHS Apply Only W : RoHS Apply by Running Change	Part Name	Spec.	PUHY-EP200YLM-A1	PUHY-EP200YLM-A1-BS	PUHY-EP250YLM-A1	PUHY-EP250YLM-A1-BS	Dwg. No.	Notes for the models	Revision info.
401	R69 103 478	G	Scroll compressor	ENB62FB-YE	1	1	1	1	EP10132B04		
402	R61 929 480	G	Heat exchanger	S	1	1	1	1	KD00U693G01		
403	R61 075 484	G	Accumulator assy		1		1		KB54B478G13		
404	R61 076 484	G	Accumulator assy	BS		1		1	KB54B478G14		
405	R61 044 487	G	Oil separator assy		1	1	1	1	KJ00L830G02		
406	R61 009 410	G	Ball valve	SBV-JA10YGME-3	1	1	1	1	P636358X01	<BV1>	
407	R61 003 540	G	Valve	VSAMH3SSCM-LA1	1	1	1	1	P636346X01	<BV2>	
408	R61 008 454	G	Strainer	25.4D	1	1	1	1	KB48K250G01	<ST1>	
409	R63 Y03 454	G	Strainer	17.6D	1	1	1	1	W893281G01	<ST2>	
410	R61 004 413	G	Check joint L		2	2	2	2	P666013X01	<(HP)CJ1,(LP)CJ2>	
411	R63 002 425	G	Capillary tube assy		1	1	1	1	KB49F229G01	<CP1>	
412	R63 021 425	G	Capillary tube		1	1	1	1	KD49D414G01	<CP2>	
413	R61 025 425	G	Capillary tube assy		1	1	1	1	KD49M754G01	<CP3>	
414	R61 013 425	G	Capillary tube assy		2	2	2	2	KB49K872G01	<CP4,CP5>	
415	R61 005 418	G	Check valve	YAV-P11Y5HMD-1	1	1	1	1	P633133X01	<CV1>	
416	R61 013 403	G	Four way valve	STF-H0731	1	1	1	1	P633130X01	<21S4a>	
417	R61 014 403	G	Four way valve	STF-H0421	1	1	1	1	P633131X01	<21S4b>	
418	R61 009 242	G	Four way valve coil	STF-H01AJ1737A1	2	2	2	2	P472092X01	<21S4a,21S4b>	
419	R63 046 232	G	Solenoid valve	FDFA277	2	2	2	2	P631312X01	<SV1,SV9>	
420	R63 032 243	G	Solenoid valve coil	FQ-G625	2	2	2	2	P472070X01	<SV1,SV9>	
421	R63 001 921	G	Solenoid valve	VPV-603DQ3	3	3	3	3	P631295X01	<SV2,SV10,SV11>	
422	R61 015 243	G	Solenoid valve coil	VPV-MOAJ512B1	3	3	3	3	P472048X01	<SV2,SV10,SV11>	
423	R63 R34 401	G	Linear expansion valve	CAM-B35YGMD-2	1	1	1	1	P632416X01	<LEV1>	
424	R63 011 401	G	Solenoid valve coil	CAM-MD12MD-123	1	1	1	1	P472059X02	<LEV1>	
425	R61 036 401	G	Linear expansion valve	PAM-BBOYGMD-1	2	2	2	2	P632504X01	<LEV2a,LEV2b>	
426	R61 022 243	G	Solenoid valve coil	PAM-MD12MD-3	1	1	1	1	P472061X02	<LEV2a>	
427	R61 093 401	G	Solenoid valve coil	PAM-MD12MD-9	1	1	1	1	P472091X01	<LEV2b>	
428	R63 Y11 208	G	Pressure switch	ACB-1UB28W	1	1	1	1	P426320X01	<63H1>	
429	R63 049 288	G	Pressure sensor	HP	1	1	1	1	KB00H904G20	<63HS1>	
430	R63 050 288	G	Pressure sensor	LP	1	1	1	1	KB00H904G21	<63LS>	
431	R61 060 200	G	Thermistor		5	5	5	5	P418065X01	<TH2,TH3,TH5,TH6,TH7>	
432	R63 911 202	G	Thermistor		1	1	1	1	P425416X02	<TH4>	
433	R11 073 936	G	Thermistor		2	2	2	2	P425473X01	<TH9,TH11>	
434	R61 001 310	G	Sensor holder		1	1	1	1	KB25B471H03		
435	R63 852 860	G	Rubber mount		4	4	4	4	W897574H01	For compressor	



No.	Part No.	G : RoHS Apply Only W : RoHS Apply by Running Change	Part Name	Spec.	PUHY-EP300YLM-A1	PUHY-EP300YLM-A1-BS	PUHY-EP350YLM-A1	PUHY-EP350YLM-A1-BS	Dwg. No.	Notes for the models	Revision info.
501	R69 104 478	G	Scroll compressor	HNB83FB-YE	1	1	1	1	EP10136B03		
502	R61 930 480	G	Heat exchanger	L	1	1			KD00U694G01		
503	R61 936 480	G	Heat exchanger	L			1	1	KD00U827G01		
504	R61 118 484	G	Accumulator assy		1		1		KB54B479G33		
505	R61 119 484	G	Accumulator assy	BS		1		1	KB54B479G34		
506	R61 044 487	G	Oil separator assy		1	1	1	1	KJ00L830G02		
507	R61 009 410	G	Ball valve	SBV-JA10YGME-3	1	1	1	1	P636358X01	<BV1>	
508	R61 004 540	G	Valve	VSAMH4SSCM-LA1	1	1	1	1	P636345X01	<BV2>	
509	R61 008 454	G	Strainer	25.4D	1	1	1	1	KB48K250G01	<ST1>	
510	R63 Y03 454	G	Strainer	17.6D	1	1	1	1	W893281G01	<ST2>	
511	R61 004 413	G	Check joint L		2	2	2	2	P666013X01	<(HP)CJ1,(LP)CJ2>	
512	R63 R34 425	G	Capillary tube assy		1	1	1	1	W905625G02	<CP1>	
513	R63 021 425	G	Capillary tube		1	1	1	1	KD49D414G01	<CP2>	
514	R61 025 425	G	Capillary tube assy		1	1			KD49M754G01	<CP3>	
515	R61 026 425	G	Capillary tube assy		2	2	2	2	KD49P040G01	<CP4,CP5>	
516	R61 005 418	G	Check valve	YAV-P11Y5HMD-1	1	1	1	1	P633133X01	<CV1>	
517	R61 013 403	G	Four way valve	STF-H0731	1	1	1	1	P633130X01	<21S4a>	
518	R61 014 403	G	Four way valve	STF-H0421	1	1	1	1	P633131X01	<21S4b>	
519	R61 009 242	G	Four way valve coil	STF-H01AJ1737A1	2	2	2	2	P472092X01	<21S4a,21S4b>	
520	R63 046 232	G	Solenoid valve	FD2A77	2	2	2	2	P631312X01	<SV1,SV9>	
521	R63 032 243	G	Solenoid valve coil	FQ-G625	2	2	2	2	P472070X01	<SV1,SV9>	
522	R63 001 921	G	Solenoid valve	VPV-603DQ3	3	3	3	3	P631295X01	<SV2,SV10,SV11>	
523	R61 015 243	G	Solenoid valve coil	VPV-MOAJ512B1	3	3	3	3	P472048X01	<SV2,SV10,SV11>	
524	R63 R34 401	G	Linear expansion valve	CAM-B35YGMD-2	1	1	1	1	P632416X01	<LEV1>	
525	R63 011 401	G	Solenoid valve coil	CAM-MD12MD-123	1	1	1	1	P472059X02	<LEV1>	
526	R61 036 401	G	Linear expansion valve	PAM-BBOYGMD-1	2	2	2	2	P632504X01	<LEV2a,LEV2b>	
527	R61 022 243	G	Solenoid valve coil	PAM-MD12MD-3	1	1	1	1	P472061X02	<LEV2a>	
528	R61 093 401	G	Solenoid valve coil	PAM-MD12MD-9	1	1	1	1	P472091X01	<LEV2b>	
529	R63 Y11 208	G	Pressure switch	ACB-1UB28W	1	1	1	1	P426320X01	<63H1>	
530	R63 049 288	G	Pressure sensor	HP	1	1	1	1	KB00H904G20	<63HS1>	
531	R63 050 288	G	Pressure sensor	LP	1	1	1	1	KB00H904G21	<63LS>	
532	R61 060 200	G	Thermistor		5	5	5	5	P418065X01	<TH2,TH3,TH5,TH6,TH7>	
533	R63 911 202	G	Thermistor		1	1	1	1	P425416X02	<TH4>	
534	R11 073 936	G	Thermistor		2	2	2	2	P425473X01	<TH9,TH11>	
535	R61 001 310	G	Sensor holder		1	1	1	1	KB25B471H03		
536	R63 852 860	G	Rubber mount		4	4	4	4	W897574H01		

PUHY-EP400YLM-A1(-BS)  
PUHY-EP450YLM-A1(-BS)  
PUHY-EP500YLM-A1(-BS)

### FUNCTIONAL PARTS (3)



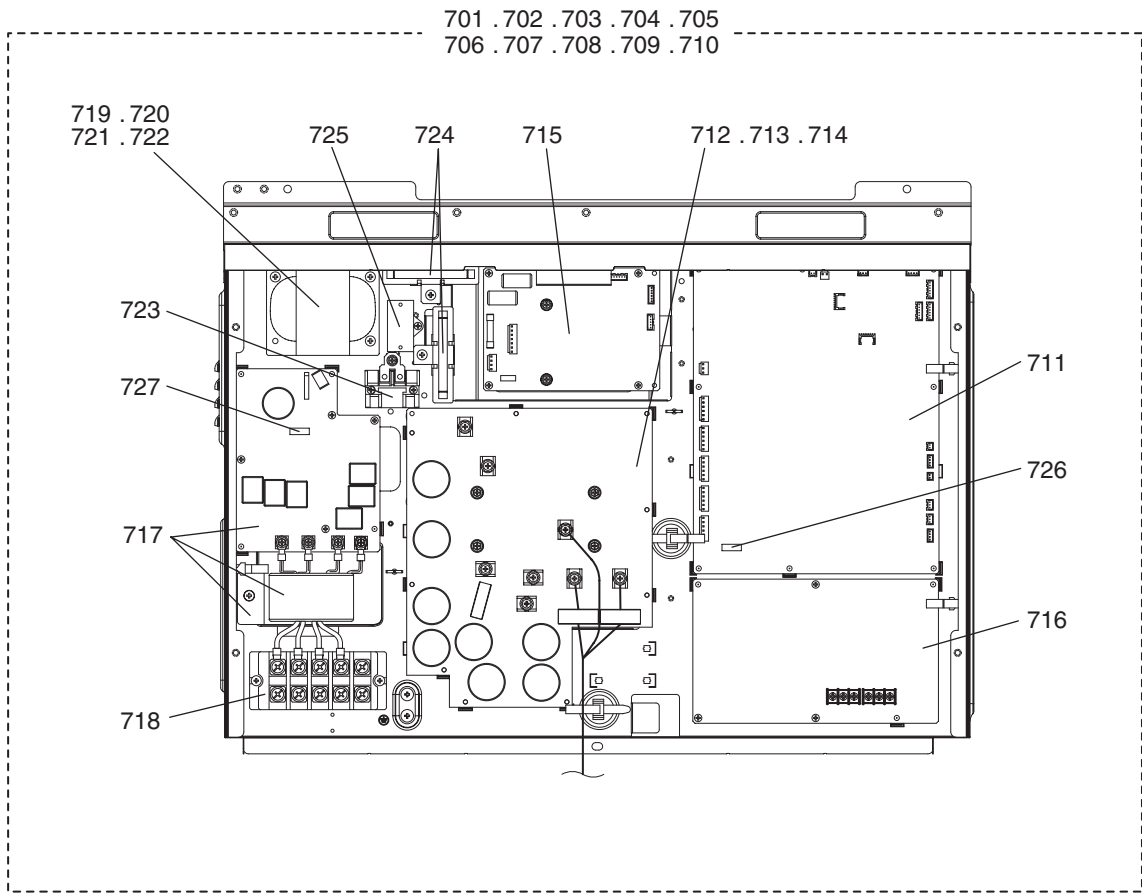
PUHY-EP400YLM-A1(-BS)  
 PUHY-EP450YLM-A1(-BS)  
 PUHY-EP500YLM-A1(-BS)

FUNCTIONAL PARTS (3)

No.	Part No.	G : RoHS Apply Only W : RoHS Apply by Running Change	Part Name	Spec.	PUHY-EP400YLM-A1	PUHY-EP400YLM-A1-BS	PUHY-EP450YLM-A1	PUHY-EP450YLM-A1-BS	PUHY-EP500YLM-A1	PUHY-EP500YLM-A1-BS	Dwg. No.	Notes for the models	Revision info.
601	R69 118 478	G	Scroll compressor	HNB84FC-YE	1	1	1	1			EP10126B04		
602	R69 119 478	G	Scroll compressor	HNB84FD-YE					1	1	EP10126B05		
603	R61 931 480	G	Heat exchanger L	XL	1		1		1		KD00U696G01		
604	R61 932 480	G	Heat exchanger L	XL BS		1		1		1	KD00U696G02		
605	R61 933 480	G	Heat exchanger R	XL	1		1		1		KD00U695G01		
606	R61 934 480	G	Heat exchanger R	XL BS		1		1		1	KD00U695G02		
607	R61 120 484	G	Accumulator assy		1		1		1		KB54B479G35		
608	R61 121 484	G	Accumulator assy	BS		1		1		1	KB54B479G36		
609	R61 044 487	G	Oil separator assy		1	1	1	1	1	1	KJ00L830G02		
610	R61 009 410	G	Ball valve	SBV-JA10YGME-3	1	1	1	1	1	1	P636358X01	<BV1>	
611	R61 005 540	G	Valve	VSAMH5SSCM-LA1	1	1	1	1	1	1	P636344X01	<BV2>	
612	R61 008 454	G	Strainer	25.4D	1	1	1	1	1	1	KB48K250G01	<ST1>	
613	R63 Y03 454	G	Strainer	17.6D	1	1	1	1	1	1	W893281G01	<ST2>	
614	R63 R34 413	G	Check joint L		2	2	2	2	2	2	P666004X02	<(HP)CJ1,(LP)CJ2>	
615	R61 014 425	G	Capillary tube assy		1	1	1	1	1	1	KB49M503G01	<CP1>	
616	R63 021 425	G	Capillary tube		1	1	1	1	1	1	KD49D414G01	<CP2>	
617	R61 028 425	G	Capillary tube		2	2	2	2	2	2	KD49U037G01	<CP4,CP5>	
618	R61 005 418	G	Check valve	YAV-P11Y5HMD-1	1	1	1	1	1	1	P633133X01	<CV1>	
619	R61 013 403	G	Four way valve	STF-H0731	2	2	2	2	2	2	P633130X01	<21S4a,21S4c>	
620	R61 014 403	G	Four way valve	STF-H0421	1	1	1	1	1	1	P633131X01	<21S4b>	
621	R61 009 242	G	Four way valve coil	STF-H01AJ1737A1	3	3	3	3	3	3	P472092X01	<21S4a,21S4b,21S4c>	
622	R63 004 421	G	Two way valve	VR43202	1	1	1	1	1	1	P633129X02	<SV5b>	
623	R63 031 243	G	Two way valve coil	SQ-A2522G-000309	1	1	1	1	1	1	P472085X01	<SV5b>	
624	R63 046 232	G	Solenoid valve	FDFA277	2	2	2	2	2	2	P631312X01	<SV1,SV9>	
625	R63 032 243	G	Solenoid valve coil	FQ-G625	2	2	2	2	2	2	P472070X01	<SV1,SV9>	
626	R63 001 921	G	Solenoid valve	VPV-603DQ3	3	3	3	3	3	3	P631295X01	<SV2,SV10,SV11>	
627	R61 015 243	G	Solenoid valve coil	VPV-MOAJ512B1	3	3	3	3	3	3	P472048X01	<SV2,SV10,SV11>	
628	R63 R34 401	G	Linear expansion valve	CAM-B35YGMD-2	1	1	1	1	1	1	P632416X01	<LEV1>	
629	R63 011 401	G	Solenoid valve coil	CAM-MD12MD-123	1	1	1	1	1	1	P472059X02	<LEV1>	
630	R61 036 401	G	Linear expansion valve	PAM-BBOYGMD-1	2	2	2	2	2	2	P632504X01	<LEV2a,LEV2b>	
631	R61 022 243	G	Solenoid valve coil	PAM-MD12MD-3	1	1	1	1	1	1	P472061X02	<LEV2a>	
632	R61 093 401	G	Solenoid valve coil	PAM-MD12MD-9	1	1	1	1	1	1	P472091X01	<LEV2b>	
633	R63 Y11 208	G	Pressure switch	ACB-1UB28W	1	1	1	1	1	1	P426320X01	<63H1>	
634	R63 051 288	G	Pressure sensor	HP	1	1	1	1	1	1	KB00F899G33	<63HS1>	
635	R61 069 288	G	Pressure sensor	LP	1	1	1	1	1	1	KB00F899G45	<63LS>	
636	R61 060 200	G	Thermistor		5	5	5	5	5	5	P418065X01	<TH2,TH3,TH5,TH6,TH7>	
637	R63 911 202	G	Thermistor		1	1	1	1	1	1	P425416X02	<TH4>	
638	R11 073 936	G	Thermistor		2	2	2	2	2	2	P425473X01	<TH9,TH11>	
639	R63 Y07 237	G	Belt heater	SP 4689F-X					1	1	P493781X02	<CH11>	
640	R61 001 310	G	Sensor holder		1	1	1	1	1	1	KB25B471H03		
641	R63 852 860	G	Rubber mount		4	4	4	4	4	4	W897574H01		

PUHY-EP200,EP250YLM-A1(-BS)  
PUHY-EP300,EP350YLM-A1(-BS)  
PUHY-EP400,EP450YLM-A1(-BS)

### CONTROL BOX PARTS (1)





PUHY-EP200,EP250YLM-A1(-BS)  
 PUHY-EP300,EP350YLM-A1(-BS)  
 PUHY-EP400,EP450YLM-A1(-BS)

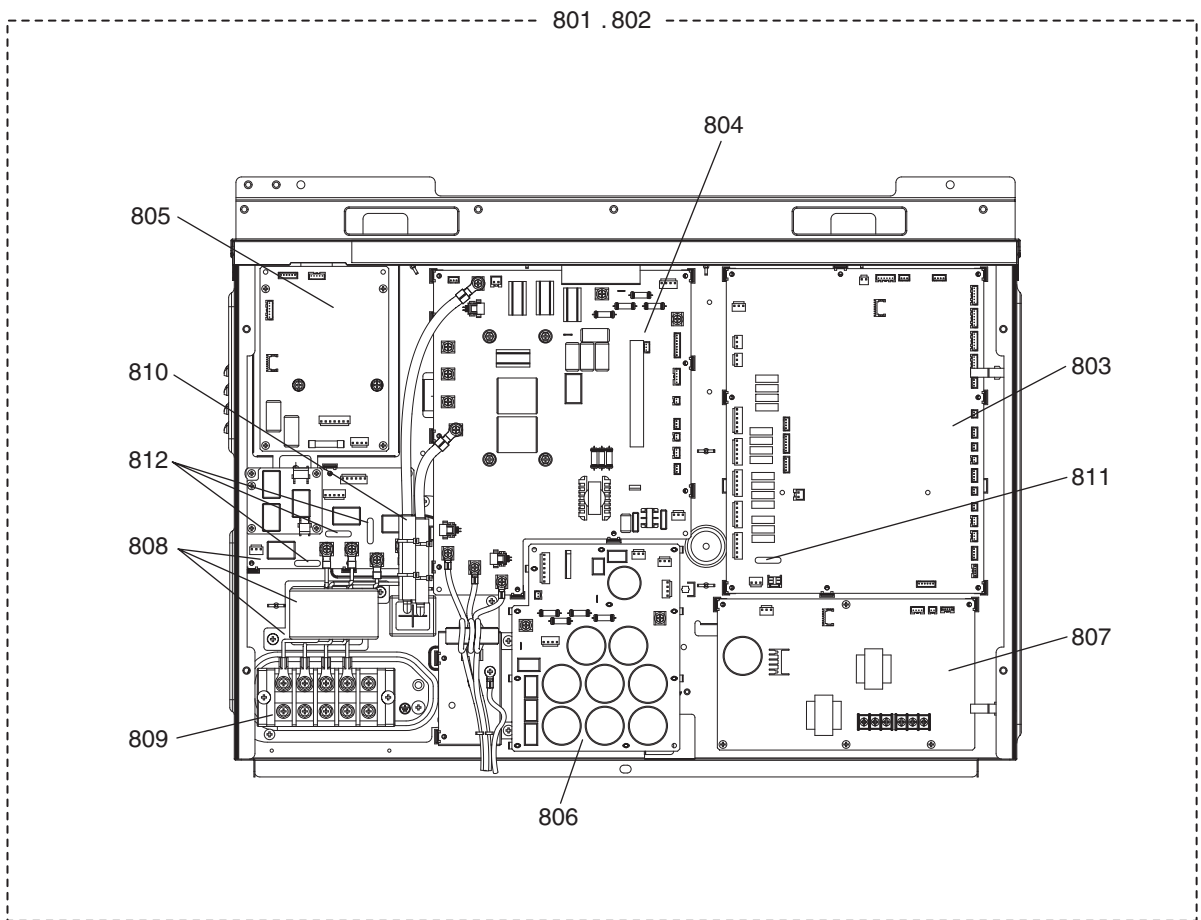
CONTROL BOX PARTS (1)

No.	Part No.	G : RoHS Apply Only W : RoHS Apply by Running Change	Part Name	Spec.	PUHY-EP200YLM-A1	PUHY-EP200YLM-A1-BS	PUHY-EP250YLM-A1	PUHY-EP250YLM-A1-BS	PUHY-EP300YLM-A1	PUHY-EP300YLM-A1-BS	Dwg. No.	Notes for the models	Revision info.
701	R61 692 305	G	Control box	Y-EP200	1						KE80G095G85		
702	R61 693 305	G	Control box	Y-EP200 BS		1					KE80G095G86		
703	R61 694 305	G	Control box	Y-EP250			1				KE80G095G87		
704	R61 695 305	G	Control box	Y-EP250 BS				1			KE80G095G88		
705	R61 696 305	G	Control box	Y-EP300					1		KE80G095G89		
706	R61 697 305	G	Control box	Y-EP300 BS						1	KE80G095G90		
707	R61 698 305	G	Control box	Y-EP350							KE80G095G91		
708	R61 699 305	G	Control box	Y-EP350 BS							KE80G095G92		
709	R61 700 305	G	Control box	Y-EP400							KE80G095G93		
710	R61 701 305	G	Control box	Y-EP400 BS							KE80G095G94		
711	R61 298 280	G	Control board		1	1	1	1	1	1	KE80C836G04	<MAIN09>	
712	R61 299 280	G	INV board		1	1	1	1			KE80C154G15	<INV20Y>	
713	R61 302 280	G	INV board						1	1	KE80C154G16	<INV20Y>	
714	R61 303 280	G	INV board								KE80C154G17	<INV20Y>	
715	R61 304 280	G	Fan board		1	1	1	1	1	1	W652171G18	<INV/S12Y>	
716	R63 187 280	G	M-NET board		1	1	1	1	1	1	KE80C055G06	<PS-MNET-Y>	
717	R61 028 293	G	Noise filter	board,coil,plate	1	1	1	1	1	1	KE80C727G03		
718	R61 007 246	G	Terminal block		1	1	1	1	1	1	S436005H12	<TB1>	
719	R61 017 259	G	Reactor		1	1					P715458X01	<DCL>	
720	R61 027 259	G	Reactor				1	1			P715476X02	<DCL>	
721	R61 028 259	G	Reactor						1	1	P715475X02	<DCL>	
722	R61 012 259	G	Reactor								P715441X02	<DCL>	
723	R61 003 216	G	Relay		1	1	1	1	1	1	P421295X01	<72C>	
724	R61 001 234	G	Resistor		2	2	2	2	2	2	P411151X01	<R1,R5>	
725	R61 001 255	G	Capacitor assy		1	1	1	1	1	1	KE00D263G01	<C100>	
726	R61 018 239	G	Fuse	3.15A AC250V T	1	1	1	1	1	1	YE81D827H02		
727	R61 006 239	G	Fuse	6.3A AC250V T	1	1	1	1	1	1	S423001H42		

PUHY-EP200,EP250YLM-A1(-BS)  
 PUHY-EP300,EP350YLM-A1(-BS)  
 PUHY-EP400,EP450YLM-A1(-BS)

CONTROL BOX PARTS (1)

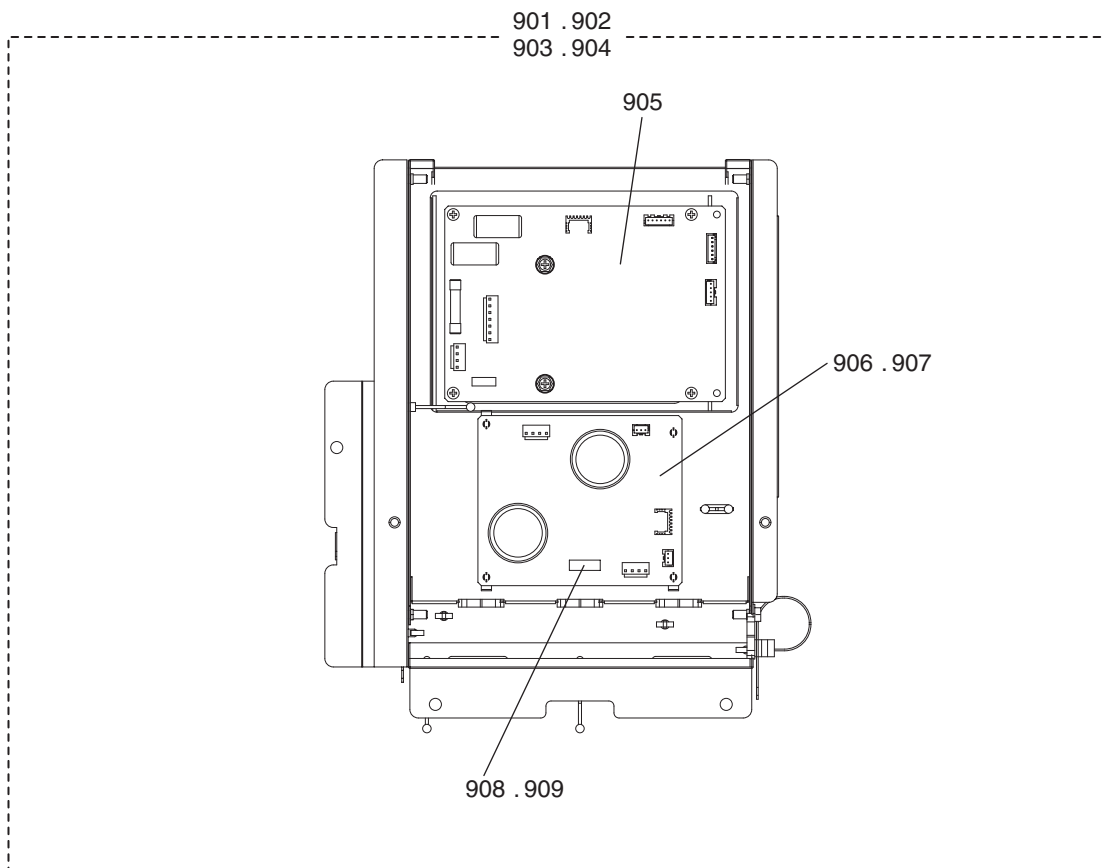
No.	Part No.	G : RoHS Apply Only W : RoHS Apply by Running Change	Part Name	Spec.	PUHY-EP300YLM-A1	PUHY-EP350YLM-A1-BS	PUHY-EP400YLM-A1	PUHY-EP450YLM-A1-BS	PUHY-EP450YLM-A1	PUHY-EP450YLM-A1-BS	Dwg. No.	Notes for the models	Revision info.
701	R61 692 305	G	Control box	Y-EP200							KE80G095G85		
702	R61 693 305	G	Control box	Y-EP200 BS							KE80G095G86		
703	R61 694 305	G	Control box	Y-EP250							KE80G095G87		
704	R61 695 305	G	Control box	Y-EP250 BS							KE80G095G88		
705	R61 696 305	G	Control box	Y-EP300							KE80G095G89		
706	R61 697 305	G	Control box	Y-EP300 BS							KE80G095G90		
707	R61 698 305	G	Control box	Y-EP350	1						KE80G095G91		
708	R61 699 305	G	Control box	Y-EP350 BS		1					KE80G095G92		
709	R61 700 305	G	Control box	Y-EP400			1		1		KE80G095G93		
710	R61 701 305	G	Control box	Y-EP400 BS				1		1	KE80G095G94		
711	R61 298 280	G	Control board		1	1	1	1	1	1	KE80C836G04	<MAIN09>	
712	R61 299 280	G	INV board								KE80C154G15	<INV20Y>	
713	R61 302 280	G	INV board		1	1					KE80C154G16	<INV20Y>	
714	R61 303 280	G	INV board				1	1	1	1	KE80C154G17	<INV20Y>	
715	R61 304 280	G	Fan board		1	1	1	1	1	1	W652171G18	<INV/S12Y>	
716	R63 187 280	G	M-NET board		1	1	1	1	1	1	KE80C055G06	<PS-MNET-Y>	
717	R61 028 293	G	Noise filter	board,coil,plate	1	1	1	1	1	1	KE80C727G03		
718	R61 007 246	G	Terminal block		1	1	1	1	1	1	S436005H12	<TB1>	
719	R61 017 259	G	Reactor								P715458X01	<DCL>	
720	R61 027 259	G	Reactor								P715476X02	<DCL>	
721	R61 028 259	G	Reactor								P715475X02	<DCL>	
722	R61 012 259	G	Reactor		1	1	1	1	1	1	P715441X02	<DCL>	
723	R61 003 216	G	Relay		1	1	1	1	1	1	P421295X01	<72C>	
724	R61 001 234	G	Resistor		2	2	2	2	2	2	P411151X01	<R1,R5>	
725	R61 001 255	G	Capacitor assy		1	1	1	1	1	1	KE00D263G01	<C100>	
726	R61 018 239	G	Fuse	3.15A AC250V T	1	1	1	1	1	1	YE81D827H02		
727	R61 006 239	G	Fuse	6.3A AC250V T	1	1	1	1	1	1	S423001H42		



No.	Part No.	G : RoHS Apply Only W : RoHS Apply by Running Change	Part Name	Spec.	PUHY-EP500YLM-A1	PUHY-EP500YLM-A1-BS							Dwg. No.	Notes for the models	Revision info.
802	R61 703 305	G	<b>Control box</b>	<b>Y-EP500 BS</b>		1							KE80C890G20		
803	R61 298 280	G	<b>Control board</b>		1	1							KE80C836G04	<MAIN09>	
804	R61 305 280	G	<b>INV board</b>		1	1							KE80C988G01	<INV30YC>	
805	R61 304 280	G	<b>Fan board</b>		1	1							W652171G18	<INV/S12Y>	
806	R61 306 280	G	<b>Capacitor board</b>		1	1							KE80G001G01		
807	R63 187 280	G	<b>M-NET board</b>		1	1							KE80C055G06	<PS-MNET-Y>	
808	R61 033 293	G	<b>Noise filter</b>	<b>board,coil,plate</b>	1	1							KE80C892G02		
809	R61 007 246	G	<b>Terminal block</b>		1	1							S436005H12	<TB1>	
810	R61 044 259	G	<b>Reactor</b>		1	1							KE80C893G03	<DCL>	
811	R61 018 239	G	<b>Fuse</b>	<b>3.15A AC250V T</b>	1	1							YE81D827H02		
812	R61 006 239	G	<b>Fuse</b>	<b>6.3A AC250V T</b>	3	3							S423001H42		

PUHY-EP400YLM-A1(-BS)  
PUHY-EP450YLM-A1(-BS)  
PUHY-EP500YLM-A1(-BS)

## FAN BOX PARTS



PUHY-EP400YLM-A1(-BS)  
 PUHY-EP450YLM-A1(-BS)  
 PUHY-EP500YLM-A1(-BS)

FAN BOX PARTS

No.	Part No.	G : RoHS Apply Only W : RoHS Apply by Running Change		Spec.	PUHY-EP400YLM-A1	PUHY-EP450YLM-A1-BS	PUHY-EP450YLM-A1	PUHY-EP400YLM-A1-BS	PUHY-EP500YLM-A1	PUHY-EP500YLM-A1-BS	Dwg. No.	Notes for the models	Revision info.
		Part Name											
901	R61 580 305	G	Fan box		1		1				KE80C721G11		
902	R61 581 305	G	Fan box			1	1				KE80C721G12		
903	R61 582 305	G	Fan box						1		KE80C721G13		
904	R61 583 305	G	Fan box							1	KE80C721G14		
905	R61 304 280	G	Fan board		1	1	1	1	1	1	W652171G18	<INV/S12Y>	
906	R63 194 280	G	Connect board		1	1	1	1			KE80C725G02	<CONNECT01>	
907	R61 307 280	G	Connect board						1	1	KE80C725G03	<CONNECT01YC>	
908	R12 001 964	G	Fuse	4A DC700V T	1	1	1	1			S423001H40		
909	R61 016 239	G	Fuse	10A AC/DC400V T					1	1	S423001H36		

**mitsubishi**  
**electric**  
**corporation**

---

BWE015090 (20150531)