

Air-conditioner Network System

Centralized Controller

AG-150A

AG-150A-A

GB-50ADA-A

GB-50ADA-J

Instruction Book (Web browser for User)

Contents

1 Introduction.....	1
1-1 Terms Used in This Manual.....	1
1-2 Computer Requirements	1
2 Setting the Operating Environment	2
2-1 Setting the PC IP Address.....	2
2-2 Setting the Web Browser	4
2-3 Setting the Java Execution Environment.....	6
3 Performing Operations	7
3-1 Logging in on the AG-150A	7
3-2 Checking the Operation Condition.....	10
3-3 Performing the Operations	12

Before using the controller, please read this Instruction Book carefully to ensure proper operation.
Retain this manual for future reference.

1 Introduction

Special features of Mitsubishi Electric Corporation's "Centralized Controller AG-150A," "Centralized Controller AG-150A-A," "Centralized Controller GB-50ADA-A," and "Centralized Controller GB-50ADA-J" are that a PC connected to a LAN can be used to monitor the operation condition of air conditioners and perform air conditioner operations.

The document explains the procedures to monitor the status of and to operate the centralized controller on the Web browser are described.

Hereinafter, Centralized controller AG-150A, AG-150A-A, GB-50ADA-A, and GB-50ADA-J, unless otherwise specified, will be called "AG-150A".

Note: License of "Web Monitor" or "Basic License Pack" is necessary to use the web browser (to operate or monitor the air conditioners). Some licenses are necessary depending on the functions to be used. Register the license key on the LCD screen or on the registration screen.

Note: A one-day license key can be registered on the LCD screen that allows the user to use the "Web Monitor" only on the day of the registration (not applicable to GB-50ADA-A and GB-50ADA-J). Use this license key to use the initial setting browser, or in any other situations when a temporary license key "Web Monitor" is necessary.

Note: Use a security device such as a VPN router when connecting the AG-150A to the Internet to prevent unauthorized access.

Note: "Booster unit" and "Water HEX unit" are referred to as "Air To Water (PWFY)".

Note: GB-50ADA-A and GB-50ADA-J cannot be connected to the Expansion Controller (PAC-YG50ECA). Settings or displays of the Expansion Controller cannot be made on the GB-50ADA-A and GB-50ADA-J.

1-1 Terms Used in this Manual

- "Click" refers to the action of positioning the mouse cursor on the object (such as button or folder), pressing down, and releasing the left mouse button once.
- Unless otherwise specified, the example screen images used in this manual are Windows® XP and Internet Explorer 6.0 screen images.

Note: Windows is a registered trademark or trademark of Microsoft Corporation USA in the United States and other countries.

1-2 Computer Requirements

To monitor and operate air conditioners by web browser, computer must include the following requirements.

Table 1-1 Computer Requirements

Item		Requirement
CPU		Pentium 300MHz or faster
Memory		64M Bytes or more (128M Bytes or more recommended)
Screen resolution		1024 x 768 or higher recommended
Compatible browser	Windows	Microsoft® Internet Explorer 6.0 Microsoft® Internet Explorer 7.0 Microsoft® Internet Explorer 8.0 Note: You must have a Java execution environment. (Sun Microsystems® Java Plug-in Ver.1.6.0.02 or later). Note: You can check the Sun Microsystems® Java Plug-in version in "Java" in a control panel. Note: Install Sun Microsystems® Java Plug-in that is appropriate for your operating system. When using 64-bit Internet Explorer, install 64-bit Java Plug-in. Note: When using Sun Microsystems® Java Plug-in Ver. 1.6.0.10 or later, set the Java execution environment according to the instructions in section 2-3 "Setting the Java Execution Environment."
	Macintosh	Safari (with Mac OS X) Note: You must have a Java execution environment. (Sun Microsystems Java Plug-in Ver.1.4.2 or later). You can download from Apple Computer's homepage. Note: You can check the Sun Microsystems Java Plug-in version at the [Help]-[Installed Plug-ins] on the Safari browser. Note: When using Sun Microsystems® Java Plug-in Ver.1.6.0_10 or later, set the Java execution environment according to the instructions in section 2-3 "Setting the Java Execution Environment."
On-board LAN port or LAN card		One connector (100BASE-TX)
Other		Pointing device such as a mouse

Note: Microsoft is a registered trademark or trademark of Microsoft Corporation USA in the United States and other countries.

Sun Microsystems and Java are trademarks or registered trademarks of Sun Microsystems Inc. in the United States and/or other countries.

2 Setting the Operating Environment

PC settings and web browser settings required for using a web browser to monitor air conditioner units and perform operations are explained in the following pages.

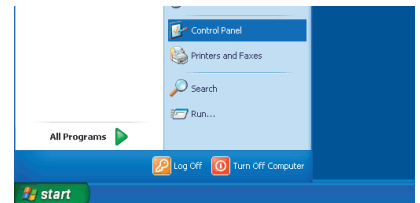
2-1 Setting the PC IP Address

Set an IP address on the PC that enables AG-150A to connect via a web browser. For instance, if the AG-150A IP address is [192.168.1.1], the PC IP address will need to belong to the same system [192.168.1.101].

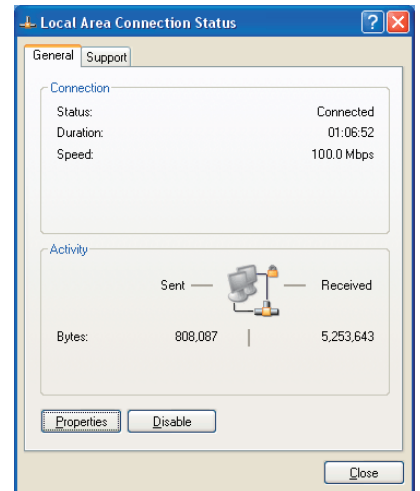
If the AG-150A is connected to an existing LAN, ask the LAN administrator to decide what PC IP address to use.

Note: When using a AG-150A dedicated LAN, it is recommended that the AG-150A main unit be given an IP address within the range [192.168.1.1] - [192.168.1.40] and the PCs that will be connected to the AG-150A be given an IP address within the range [192.168.1.101] - [192.168.1.150]

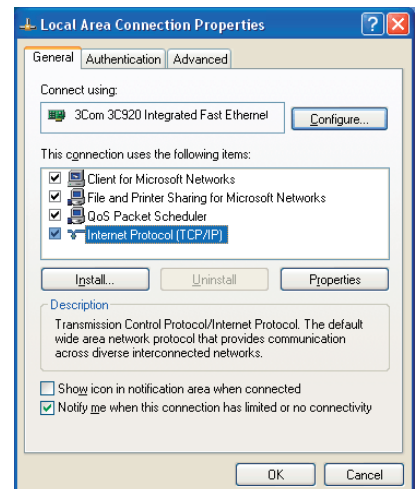
(1) Click on [Control Panel] under [Start] to open the Control Panel.



(2) In the Control Panel window, double click [Network and Dial-up Connections] and the Network and Dial-up Connections window will open. Double click on [Local Area Setting] and the [Local Area Connection Status] dialog will open. Click [Properties].



(3) In the [Local Area Connection Properties] dialog, click [Internet Protocol] to select it and click the [Properties] button.

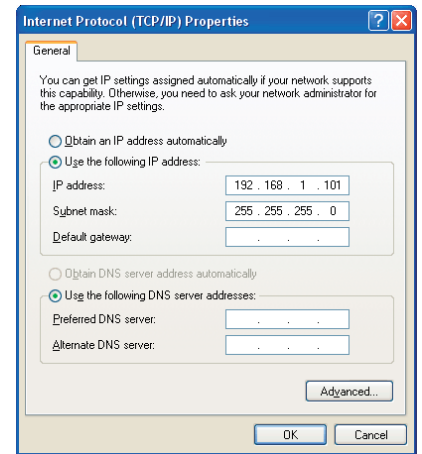


(4) In the [Internet Protocol (TCP/IP) Properties] dialog, click [Use the following IP address] and enter the IP address (for example, “192.168.1.101”) that you want to set in the IP address field.

You normally set [255.255.255.0] as the subnet mask.

Note: Ask your LAN administrator to provide the IP addresses and subnet mask.

(5) Click the [OK] button to close this dialog, and then close the other open dialogs to complete the network setting.



2-2 Setting the Web Browser

Use a security device such as a VPN router when connecting the AG-150A to the Internet to prevent unauthorized access.

If no security devices are installed, the operation settings may be changed by an unauthorized person without the knowledge of the user.

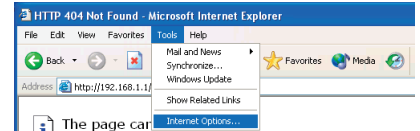
Necessary web browser settings must be performed to enable the web browser to connect to the AG-150A.

Note: The settings and screen images used as examples in this manual are based on Internet Explorer 6.0.

2-2-1 No Internet Connection

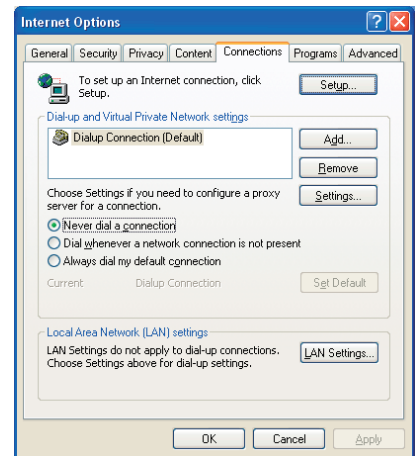
Follow the instructions below to make the web browser environment settings when using the PC with no Internet connection for monitoring and operating the air conditioners.

- (1) Click the web browser menu item [Tools] and then click [Internet Options...]



- (2) In the [Internet Options] tabbed dialog, click the [Connections] tab to display.

- (3) Select [Never dial a connection] in the Dial-up settings section and click the [OK] button to close the dialog.

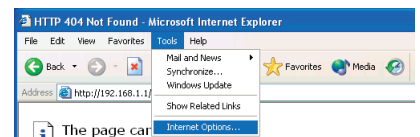


2-2-2 Internet Connection Using a Dial-Up

If the PC you use for monitoring air conditioners and performing operations is going to connect to the Internet via a dial-up connection, use the procedure given below to set the web browser environment settings.

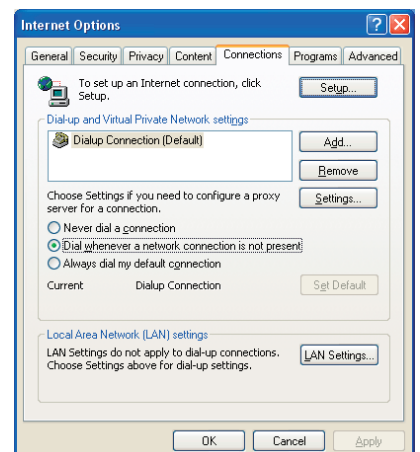
By performing these settings, a message will appear asking whether or not to use a dial-up connection when an Internet connection is necessary. When connecting to the Internet, follow the directions below.

- (1) Click the web browser menu item [Tools] and then click [Internet Options...]



- (2) In the [Internet Options] tabbed dialog, click the [Connections] tab to display.

- (3) Select [Dial whenever a network connection is not present] in the Dial-up settings section and click the [OK] button to close the dialog.

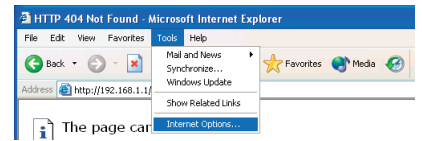


2-2-3 Connecting to the Internet using a proxy server (Using an existing LAN)

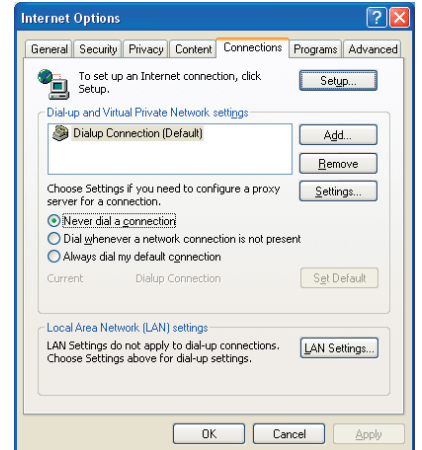
If the PC you use for monitoring air conditioners and performing operations is going to access the Internet via proxy server by connecting to an existing LAN such as a LAN within your company, use the procedure given below to set the web browser environment settings.

By performing these settings, your PC will connect to a proxy server only when connecting to the Internet.

- (1) Click the web browser menu item [Tools] and then click [Internet Options...]



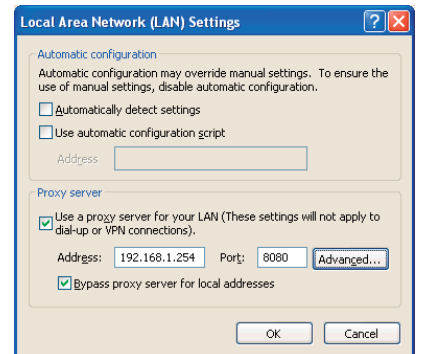
- (2) In the [Internet Options] tabbed dialog, click the [Connections] tab to display.



- (3) Select [Never dial a connection] in the Dial-up setting section.

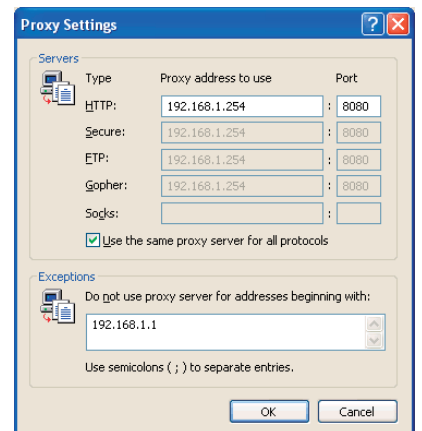
- (4) Click the [LAN Setting ...] button in the Local Area Network (LAN) settings section to display the Local Area Network (LAN) Settings dialog.

- (5) In the Local Area Network (LAN) Settings dialog, check [Bypass proxy server for local addresses] and click the [Advanced...] button.



- (6) Enter the IP address for the AG-150A (e.g. 192.168.1.1) in the Exceptions field of the Proxy Setting dialog and click the [OK] button to close the dialog and then close the other open dialogs to complete the setting.

Note: If connecting to more than one AG-150A, you can specify multiple IP addresses like [192.168.1.1; 192.168.1.2], however, it is also possible to use the asterisk (*) and specify [192.168.1*].



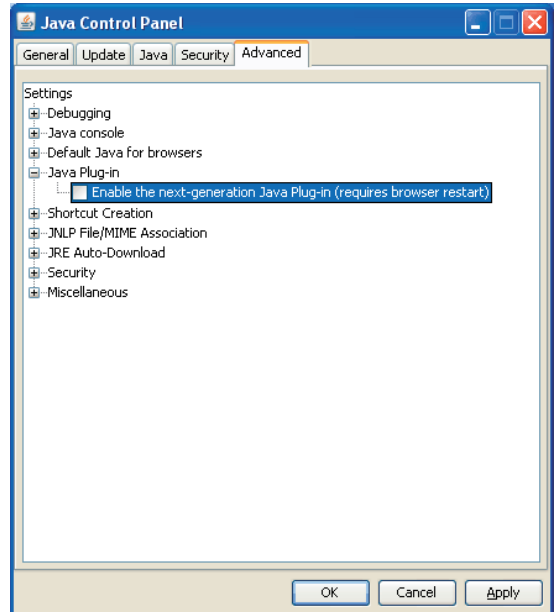
2-3 Setting the Java Execution Environment

When using Java Plug-in version 1.6.0_10 or later, make the following environment settings (not required for version 1.6.0_09 or earlier).

Note: The setting samples and screenshots used in this manual are those of Java Plug-in version 1.6.0_11.

2-3-1 Disabling the next-generation Java Plug-in

- (1) Open Java Control Panel by double-clicking Java in the Control Panel.
- (2) In the [Advanced] tab under the [Java Control Panel] screen, click the plus next to [Java Plug-in] to expand the list, and uncheck the checkbox next to [Enable the next-generation Java Plug-in (requires browser restart)].



3 Performing Operations

Text below explains how to connect to the AG-150A and how to monitor and adjust the operation condition of air conditioners. Follow the directions given here when performing operations.

Note: If the AG-150A is restarted due to a power interruption etc., wait until the screen on the AG-150A main unit displays the normal operation screen (it takes several minutes before the normal operation screen is displayed) before using a web browser to access the AG-150A. If access is attempted while the AG-150A is still starting up, the most recent data might not be displayed or communication errors could occur.

Note: Default IP address of AG-150A is "192.168.1.1". (Factory setting)

3-1 Logging in on the AG-150A

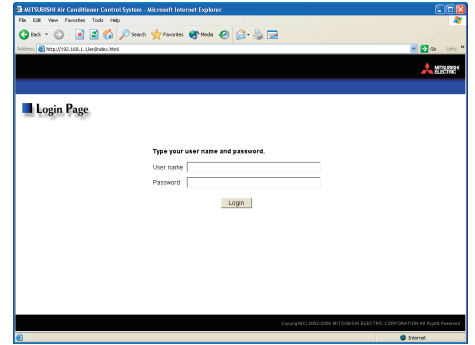
3-1-1 Logging in on the AG-150A

- (1) Enter the web page address in the address field of the web browser as follows:

http://[IP address of the AG-150A]/index.html

Press the [Enter] key on the keyboard. A screen appears for login.

Note: For example, type "http://192.168.1.1/index.html" if the AG-150A IP address is [192.168.1.1].



*If the login screen does not appear then take the steps below to delete the temporary files as it may help with the problem.

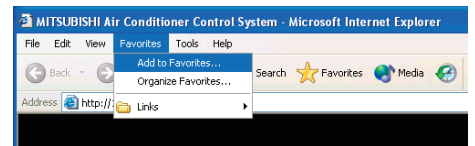
<Internet Explorer>

- 1. Open Internet Explorer and click on Tools.
- 2. Click on Internet Options.
- 3. On the General Tab, in the middle of the screen, click on Delete Files.

<Java>

- 1. Click Start > Control Panel.
- 2. Double-click the Java icon in the control panel to launch the Java Control Panel.
- 3. On the General Tab, click on Settings under Temporary Internet Files.
- 4. Click on Delete Files.

- (2) To make connection easier for the next time, click the web browser menu item [Favorites], click [Add to Favorites], then add the address to the Favorites folder. Once this address is added to the Favorites folder, it is not necessary to input the address of (1). Simply select it from the Favorites folder and the AG-150A page will appear.



- (3) Enter the user name and the password in the login screen, and click the [Login] button. The screen for monitoring the operation condition will appear. An explanation on how to perform operations in the normal operation screen begins from the next page.

Note: Consult your administrator for your user name and password.

Note: The Web page is displayed in the same language as the computer uses and it is also possible to display the Web page in other languages by entering the following Web page addresses.

Chinese	: http://[IP address of the AG-150A]/zh/index.html
English	: http://[IP address of the AG-150A]/en/index.html
French	: http://[IP address of the AG-150A]/fr/index.html
German	: http://[IP address of the AG-150A]/de/index.html
Italian	: http://[IP address of the AG-150A]/it/index.html
Japanese	: http://[IP address of the AG-150A]/ja/index.html
Portuguese	: http://[IP address of the AG-150A]/pt/index.html
Russian	: http://[IP address of the AG-150A]/ru/index.html
Spanish	: http://[IP address of the AG-150A]/es/index.html

3-1-2 Encrypting the communication data and login on the AG-150A

AG-150A can encrypt communication data using HTTPS (SSL).

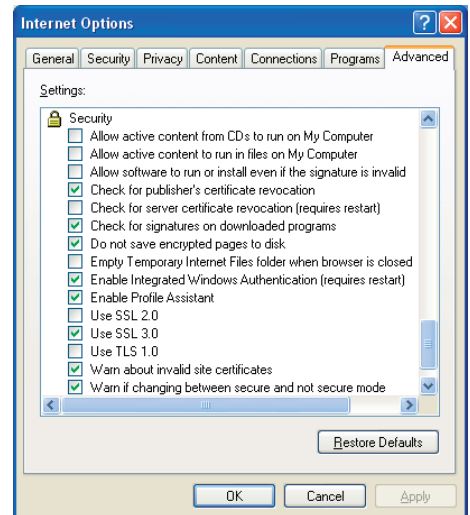
When connecting the AG-150A to the LAN that can be accessed by the general public, it is recommended that the following settings be made so that the units are monitored and controlled on the encrypted Web page.

Note: Depending on the operating system or the version of Java, HTTPS encrypted messages may not be handled correctly. If this happens, use a HTTP connection to monitor and control the units as noted in the section above.

- (1) Go to [Tools]->[Internet Options]->[Advanced], and make the following settings.

Item	Checkbox setting
Use SSL 2.0	Uncheck the box.
Use SSL 3.0	Check the box.
Use TLS 1.0	Uncheck the box.
Do not save encrypted pages to disk	Check the box.

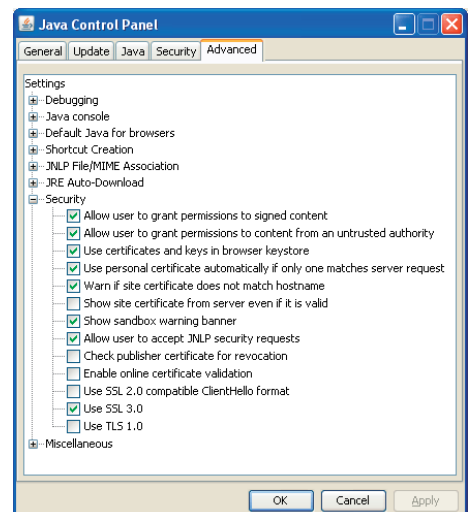
Note: Some of the settings may have different names depending on the Web browser version.



- (2) Click on [Java] in the Control Panel, and make the settings for the items under [Security] in the [Advanced] tab.

Item	Checkbox setting
Use SSL 2.0 compatible Client Hello format	Uncheck the box.
Use SSL 3.0	Check the box.
Use TLS 1.0	Uncheck the box.

Note: Some of the settings may have different names depending on the Java version.

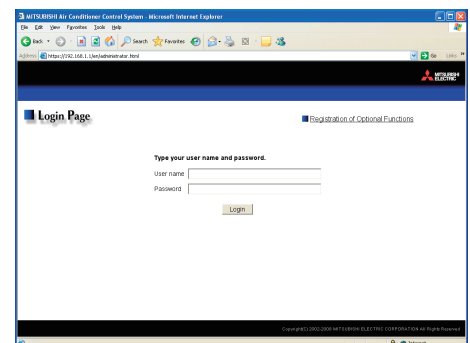


- (3) Prefix the Web address with [https], enter the address, and hit the [Enter] (Return) key on the keyboard.

https://[IP Address of the AG-150A]/index.html

Note: For example, type "https://192.168.1.1/index.html" if the AG-150A IP address is [192.168.1.1].

If the security alert is disabled as described in the note in the following and the subsequent sections, encrypted data communication will begin, and the Login screen will appear. If the security alert has not been disabled, take the following procedures.



- (4) If the security alert has not been disabled, after entering the web address and hitting the Enter (Return) key, a security alert message will alert asking if you want to proceed. This is because the AG-150A uses the self-authentication system. Click [Yes] and proceed.

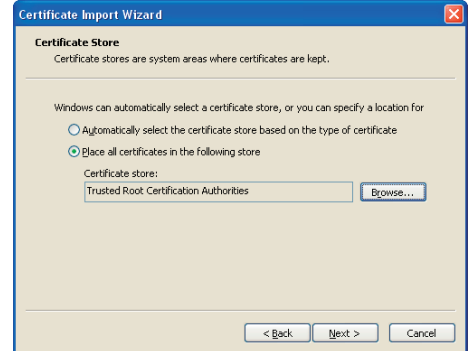
Note: Disable the security alert that appears every time the browser is opened, take the following two steps:

- 1) Register the security certificate and
- 2) Change the Web browser's option settings

To register the security certificate, click the [View Certificate] button on the security alert window to display the certificate, click on the [Install Certificate] button, and add the certificate to the Trusted Root Certification Authorities store. Just follow the prompts of the Import Wizard.

Go to [Tools]->[Internet Options]->[Advanced], and make the following settings for the Web browser.

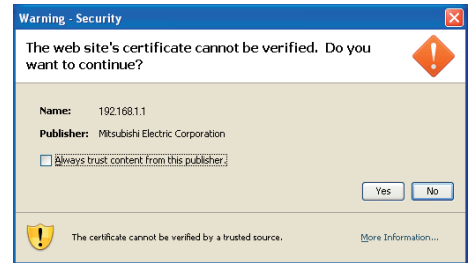
Item	Checkbox setting
Warn about invalid site certificates	Uncheck the box.



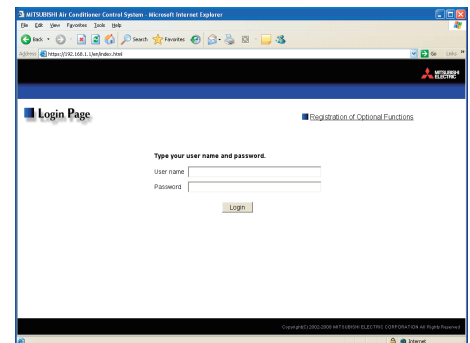
- (5) A Java security alert message will appear after you click [Yes] in step (4) above, click [Yes] again to proceed.

Note: To disable the security alert message that appears every time the browser is opened, check the check box next to [Always trust content from this publisher], and click [Yes]. The browser may need to be restarted to reflect the change.

Note: If the window shown on the right does not appear and connection fails, the certificate needs to be added to the Java certificate list. Click the [View Certificate] button on the screen in step (4) to display the certificate, click on the [Copy to File] on the [Details] page, and save the certificate in any desired location in the DER format. Open [Java] in the Control Panel, click on the [Certificates] button on the [Security] page to bring up the certificate registration screen. On the screen, select [Secure Site], click on the [Import] button, change the File of type to [All Files], and select the saved certificate. Now the certificate has been added to the Java certificate list.



- (6) If a connection is successfully made, the login window will appear. All communication with the AG-150A will be encrypted. The Web addresses for general users and in each language will have the web address in the previous section with "http" changed to "https".



3-2 Checking the Operation Condition

When you login correctly using the Login Screen, the screen used to monitor the operation conditions of air conditioner, ventilator (LOSSNAY), Air To Water (PWFY) groups, and general equipment will appear. If you wish to operate, click the group icon to switch to the operation screen.

Note: The operation condition display will not update automatically. If you wish to view the very latest condition, click [Update] on each screen.

Batch operation
Click to perform an operation on all groups at once.

Update to most recent condition
Click to update the screen so that the most recent condition is shown.

Group name
Group names are displayed.

Group icons
These icons are used to indicate the operation condition of an air conditioner or a general equipment group. Switch to the operation screen by clicking the icon.

Set temperature display
The set temperature is displayed here.

Room temperature display
The temperature of the indoor unit's intake is displayed here.

Operation mode display
The operation mode is displayed here.

Item	Description																								
Update to most recent condition	Click [Update] to ensure the displayed items reflect the most recent operation condition.																								
Batch Operation	Click [Batch Operations] if you want to perform an operation on all groups at once.																								
Group name	Group names are displayed.																								
Group icon	<p>The operation condition is indicated by the icon that is displayed. When you point to a group icon with the mouse cursor, the group name is displayed. To switch to the operation screen, click on the icon. The icons used to indicate the operation condition are shown below.</p> <p>(1) Air conditioner group operation condition</p> <table border="1"> <thead> <tr> <th>ON</th> <th>OFF</th> <th>Error</th> <th>Filter sign</th> </tr> </thead> <tbody> <tr> <td></td> <td></td> <td></td> <td></td> </tr> <tr> <td>Interlocked ventilator ON</td> <td>Interlocked ventilator OFF</td> <td>Schedule set</td> <td>Energy saving</td> </tr> <tr> <td></td> <td></td> <td></td> <td></td> </tr> <tr> <td>Setback ON</td> <td>Unknown (during initial startup)</td> <td>The room temperature</td> <td></td> </tr> <tr> <td></td> <td></td> <td></td> <td></td> </tr> </tbody> </table> <p>Note: Other than 4-airflow icons, 2-airflow or ceiling-suspended icons are also available. Select the icon type on Initial Setting Web.</p> <p>Note: If a given LOSSNAY unit is interlocked with multiple indoor unit groups, the LOSSNAY unit may be in operation even when the display shows that the unit is stopped.</p> <p>Note: When setting ventilation interlock with Mr. Slim units, the air conditioning and interlocked ventilation icon will display ON even when the interlocked LOSSNAY is operating by itself. (This will occur when used with the following M-NET adapter: PAC-SF48/50/60/70/80/81MA-E)</p> <p>Note: When connecting multiple AG-150A controllers by connecting an Expansion Controller to the system, "Schedule set," "Energy saving," and "Setback ON" will be displayed only on the AG-150A controller that is executing these functions.</p>	ON	OFF	Error	Filter sign					Interlocked ventilator ON	Interlocked ventilator OFF	Schedule set	Energy saving					Setback ON	Unknown (during initial startup)	The room temperature					
ON	OFF	Error	Filter sign																						
Interlocked ventilator ON	Interlocked ventilator OFF	Schedule set	Energy saving																						
Setback ON	Unknown (during initial startup)	The room temperature																							

Item	Description																
Group icon	<p>(2) Ventilator (Lossnay) group operation condition</p> <table border="1" data-bbox="491 226 1390 479"> <thead> <tr> <th data-bbox="491 226 716 259">ON</th> <th data-bbox="716 226 941 259">OFF</th> <th data-bbox="941 226 1166 259">Error</th> <th data-bbox="1166 226 1390 259">Filter sign</th> </tr> </thead> <tbody> <tr> <td data-bbox="491 259 716 349"></td> <td data-bbox="716 259 941 349"></td> <td data-bbox="941 259 1166 349"></td> <td data-bbox="1166 259 1390 349"></td> </tr> <tr> <th data-bbox="491 349 716 383">Schedule set</th> <th data-bbox="716 349 941 383">Energy saving</th> <td colspan="2"></td> </tr> <tr> <td data-bbox="491 383 716 479"></td> <td data-bbox="716 383 941 479"></td> <td colspan="2"></td> </tr> </tbody> </table> <p data-bbox="491 501 1426 577">Note: When connecting multiple AG-150A controllers by connecting an Expansion Controller to the system, "Schedule set" and "Energy saving" will be displayed only on the AG-150A controller that is executing these functions.</p>	ON	OFF	Error	Filter sign					Schedule set	Energy saving						
	ON	OFF	Error	Filter sign													
	Schedule set	Energy saving															
<p>(3) Air To Water (PWFY) group operation condition</p> <table border="1" data-bbox="491 645 1390 913"> <thead> <tr> <th data-bbox="491 645 716 678">ON</th> <th data-bbox="716 645 941 678">OFF</th> <th data-bbox="941 645 1166 678">Error</th> <th data-bbox="1166 645 1390 678">Check water</th> </tr> </thead> <tbody> <tr> <td data-bbox="491 678 716 768"></td> <td data-bbox="716 678 941 768"></td> <td data-bbox="941 678 1166 768"></td> <td data-bbox="1166 678 1390 768"></td> </tr> <tr> <th data-bbox="491 768 716 801">Schedule set</th> <th data-bbox="716 768 941 801">Energy saving</th> <td colspan="2"></td> </tr> <tr> <td data-bbox="491 801 716 913"></td> <td data-bbox="716 801 941 913"></td> <td colspan="2"></td> </tr> </tbody> </table> <p data-bbox="491 936 1426 1012">Note: When connecting multiple AG-150A controllers by connecting an Expansion Controller to the system, "Schedule set" and "Energy saving" will be displayed only on the AG-150A controller that is executing these functions.</p>	ON	OFF	Error	Check water					Schedule set	Energy saving							
ON	OFF	Error	Check water														
Schedule set	Energy saving																
<p>(4) General equipment group operation condition</p> <table border="1" data-bbox="491 1077 1390 1211"> <thead> <tr> <th data-bbox="491 1077 716 1111">ON</th> <th data-bbox="716 1077 941 1111">OFF</th> <th data-bbox="941 1077 1166 1111">Error</th> <th data-bbox="1166 1077 1390 1111">Schedule set</th> </tr> </thead> <tbody> <tr> <td data-bbox="491 1111 716 1200"></td> <td data-bbox="716 1111 941 1200"></td> <td data-bbox="941 1111 1166 1200"></td> <td data-bbox="1166 1111 1390 1200"></td> </tr> </tbody> </table> <p data-bbox="491 1223 1222 1249">Note: Other than lighting icons, pump or card key icons are also available.</p> <p data-bbox="491 1249 1458 1326">Note: When connecting multiple AG-150A controllers by connecting an Expansion Controller to the system, "Schedule set" will be displayed only on the AG-150A controller that is executing these functions.</p>	ON	OFF	Error	Schedule set													
ON	OFF	Error	Schedule set														
Operation mode display	The operation mode is displayed here.																
Set temperature display	<p>The set temperature is displayed here.</p> <p>Note: The water temperature setting will be displayed for the Air To Water (PWFY) group.</p> <p>Note: The temperature display can be in either Celsius (°C) or Fahrenheit (°F) depending on the setting.</p>																
Room temperature display	<p>The temperature of the indoor unit's intake is displayed here.</p> <p>Note: Because the temperature displayed here is of the indoor unit's intake, it could be different from the actual room temperature.</p> <p>Note: The current water temperature will be displayed for the Air To Water (PWFY) group.</p> <p>Note: The temperature display can be in either Celsius (°C) or Fahrenheit (°F) depending on the setting.</p>																

3-3 Performing the Operations

Text below explains how to perform air conditioner, ventilator (LOSSNAY), Air To Water (PWFY), or general equipment operations.

3-3-1 Performing the operations that target one group

When you click on a group icon in the operation condition monitoring screen, the operation screen for that group will appear. The items shown in this screen are the current operation conditions. Modify the items you want to change and click [OK] to confirm the operation details. Click [Cancel] to return to the previous screen without making any changes.

Block name
The name of the block is displayed here.

ON/OFF
Click to switch to ON or OFF.

Operation prohibition mark
If the prohibit setting has been set for an operation, the prohibition mark will be displayed.

Operation mode
Click to switch the operation mode.

Set temperature
Click to adjust the set temperature.

Air direction
Click to adjust the air direction.

Filter sign
Click to reset the filter sign.

Cancel button
Click to cancel all operations.

Group name
The name of the group is displayed here.

Central control mark
This is displayed when the units are centrally controlled.




Interlocked ventilator ON/OFF
Click to switch interlocked ventilator ON or OFF.

Fan speed of interlocked ventilator
Click to adjust the fan speed of the interlocked ventilator.

Fan speed
Click to adjust the fan speed.

OK button
Click to confirm the operation details. You must press the OK button for the operation to take effect.

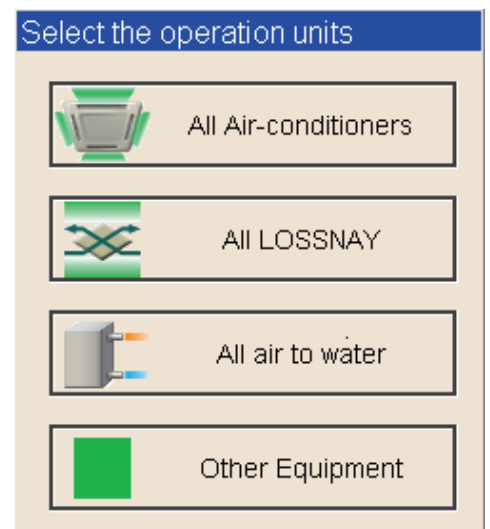
Item	Description		
ON/OFF *1	Click [ON] or [OFF] to switch to ON or OFF. Note: Ventilation units that are interlocked with a given group of indoor units will turn on and off when this switch is turned on and off. To switch on/off the interlocked ventilation units only, use the "Ventilation ON/OFF" button.		
Operation mode	Click [Cool], [Dry], [Fan], [Heat] or [Auto] to switch the operation mode. Note: This item will not appear if the operation mode switching function is not available. Note: Some unit models do not support certain operation modes. Unsupported operation modes are not displayed. Note: For K control models, all modes are displayed, however, choose only the modes that can be operated. Note: If it is a ventilator group, select [Bypass], [Heat Recovery] or [Auto]. Note: When making the settings for the Air To Water (PWFY) group, elect from [Heating], [Heating ECO], [Hot Water], [Anti-freeze], and [Cooling].		
Set temperature	Click to adjust the set temperature. For [Cool] and [Dry], the setting range is 19 ~ 30°C/67 ~ 87°F, for [Heat] it is 17 ~ 28°C/63 ~ 83°F, and for [Auto] it is 19 ~ 28°C/67 ~ 83°F. Note: This item will not appear if the temperature setting function is not available. Note: The temperature setting range varies depending on the unit model. Note: If the setting range for set temperature is restricted, the temperature setting range will be smaller. Note: The temperature setting range for the Air To Water (PWFY) group is as follows: <table border="0" style="width: 100%;"> <tr> <td style="width: 50%; vertical-align: top;"> [Booster unit] Heating: 30°C ~ 50°C / 87°F ~ 122°F Heating ECO: 30°C ~ 45°C / 87°F ~ 113°F Hot Water: 30°C ~ 70°C / 87°F ~ 158°F Anti-freeze: 10°C ~ 45°C / 50°F ~ 113°F Cooling: Invalid </td> <td style="width: 50%; vertical-align: top;"> [Water HEX unit] Heating: 30°C ~ 45°C / 87°F ~ 113°F Heating ECO: 30°C ~ 45°C / 87°F ~ 113°F Hot Water: Invalid Anti-freeze: 10°C ~ 45°C / 50°F ~ 113°F Cooling: 10°C ~ 30°C / 50°F ~ 87°F </td> </tr> </table> Note: The temperature display can be set to display in either Celsius (°C) or Fahrenheit (°F).	[Booster unit] Heating: 30°C ~ 50°C / 87°F ~ 122°F Heating ECO: 30°C ~ 45°C / 87°F ~ 113°F Hot Water: 30°C ~ 70°C / 87°F ~ 158°F Anti-freeze: 10°C ~ 45°C / 50°F ~ 113°F Cooling: Invalid	[Water HEX unit] Heating: 30°C ~ 45°C / 87°F ~ 113°F Heating ECO: 30°C ~ 45°C / 87°F ~ 113°F Hot Water: Invalid Anti-freeze: 10°C ~ 45°C / 50°F ~ 113°F Cooling: 10°C ~ 30°C / 50°F ~ 87°F
[Booster unit] Heating: 30°C ~ 50°C / 87°F ~ 122°F Heating ECO: 30°C ~ 45°C / 87°F ~ 113°F Hot Water: 30°C ~ 70°C / 87°F ~ 158°F Anti-freeze: 10°C ~ 45°C / 50°F ~ 113°F Cooling: Invalid	[Water HEX unit] Heating: 30°C ~ 45°C / 87°F ~ 113°F Heating ECO: 30°C ~ 45°C / 87°F ~ 113°F Hot Water: Invalid Anti-freeze: 10°C ~ 45°C / 50°F ~ 113°F Cooling: 10°C ~ 30°C / 50°F ~ 87°F		
Air direction	Click to adjust the air direction. Note: If it is a model that does not support air direction adjustment, this item is not displayed. Note: Available functions vary depending on the unit model.		
Fan speed	Click to adjust the fan speed. Note: If it is a model that does not support fan speed adjustment, this item is not displayed. Note: Available functions vary depending on the unit model.		
Filter sign	Click [Reset] to specify whether to reset the filter sign. It is set to reset when a green indicator is displayed on the left of Reset ([Reset]). Note: If filter signs are not triggered in the group, then this item is not displayed.		

Item	Description
Interlocked ventilator ON/OFF *1	Click [ON] or [OFF] to switch interlocked ventilator ON or OFF. Note: For groups that are not connected to an interlocked ventilator, the items related to interlocked ventilators are not displayed.
Fan speed of interlocked ventilator	Click   to adjust the fan speed of the interlocked ventilator. Note: For groups that are not connected to an interlocked ventilator, the items related to interlocked ventilators are not displayed.
Operation Prohibition mark	When air conditioners are centrally controlled, a mark that indicates so will be displayed, and if the prohibit setting has been set for any operations, the operation prohibition mark [] will be displayed next to those operation items. If the prohibit setting has been set for an item, it is not possible to operate that item.

*1: The change on the interlock setting between the indoor and LOSSNAY units made on the indoor unit side will not be reflected on the LOSSNAY unit side on the screen until the OK is pressed and the change is saved. The actual interlock setting, however, is immediately effective, so as soon as the interlock setting on the indoor unit side is set to ON, the LOSSNAY unit will go into operation when one or more indoor units go into operation regardless of the display on the screen.

3-3-2 Adjusting the operation conditions that target all groups

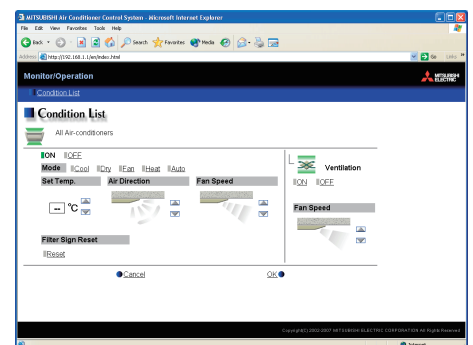
- (1) Click [Batch Operation] from the operation condition monitoring screen that displays all groups in a list. When air conditioner groups, ventilator (LOSSNAY) groups, and general equipment groups exist together in the List, a new screen will appear to select the group. Click one of the [All Air-conditioners], [All LOSSNAY], [All Air To Water], or [Other Equipment] and the screen to set the batch operation will appear.
- If there are only air conditioner groups or only LOSSNAY groups or only Air To Water (PWFY) groups or only general equipment groups, this selection screen will not appear.



- (2) After you have made the settings on the screen for batch operation, click [OK] and only the items for which operation was performed will be sent to all the air conditioner, ventilator (LOSSNAY) groups, Air To Water (PWFY) groups or general equipment groups.
- To return to the previous screen without performing any operations, click [Cancel].

Note: If the setting range for set temperature is restricted, the temperature setting range will be smaller.

Note: If operation of an item has been prohibited, then operation is not possible for that item.



This product is designed and intended for use in the residential,
commercial and light-industrial environment.

The product at hand is
based on the following
EU regulations:

- Low Voltage Directive 2006/95/EC
- Electromagnetic Compatibility Directive
2004/108/EC

Please be sure to put the contact address/telephone number on
this manual before handing it to the customer.

MITSUBISHI ELECTRIC CORPORATION
HEAD OFFICE: TOKYO BLDG., 2-7-3, MARUNOUCHI, CHIYODA-KU, TOKYO 100-8310, JAPAN