

PARTS CATALOG

R32

**Outdoor unit
[Model Name]**

[Service Ref.]

PUZ-ZM100VKA

PUZ-ZM100VKA.UK

PUZ-ZM125VKA

PUZ-ZM125VKA.UK

PUZ-ZM140VKA

PUZ-ZM140VKA.UK

PUZ-ZM100YKA

PUZ-ZM100YKA.UK

PUZ-ZM125YKA

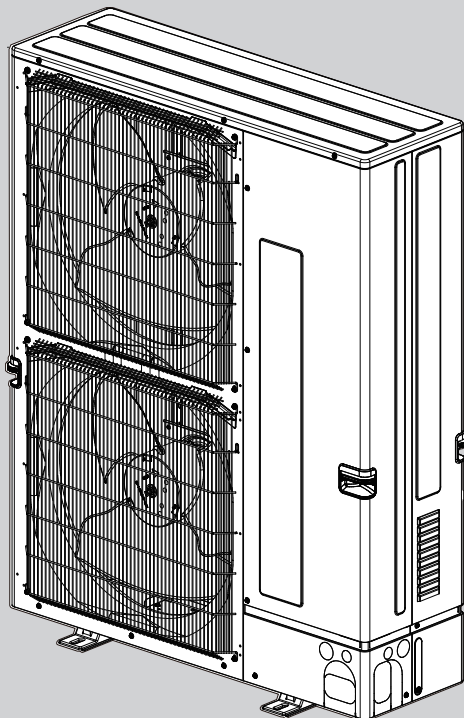
PUZ-ZM125YKA.UK

PUZ-ZM140YKA

PUZ-ZM140YKA.UK

Note:

- RoHS compliant products have <G> mark on the spec name plate.



CONTENTS

1. RoHS PARTS LIST 2

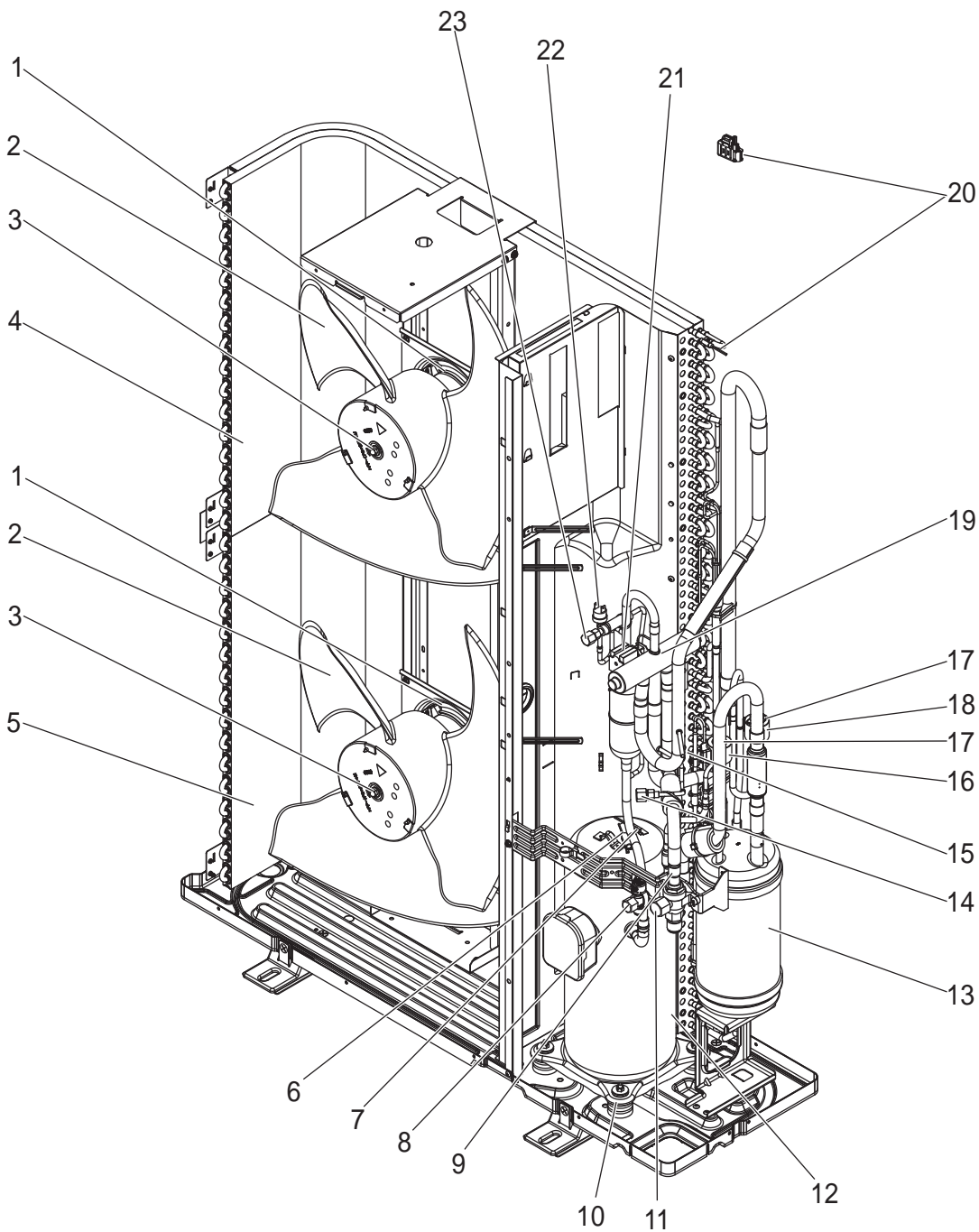
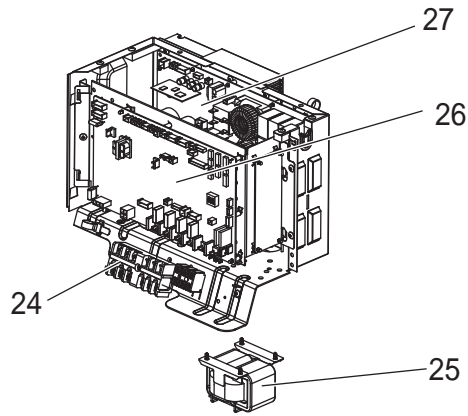
SERVICE MANUAL (OCH654)

Mr. SLIM

FUNCTIONAL AND ELECTRICAL PARTS

PUZ-ZM100VKA.UK

PUZ-ZM125VKA.UK

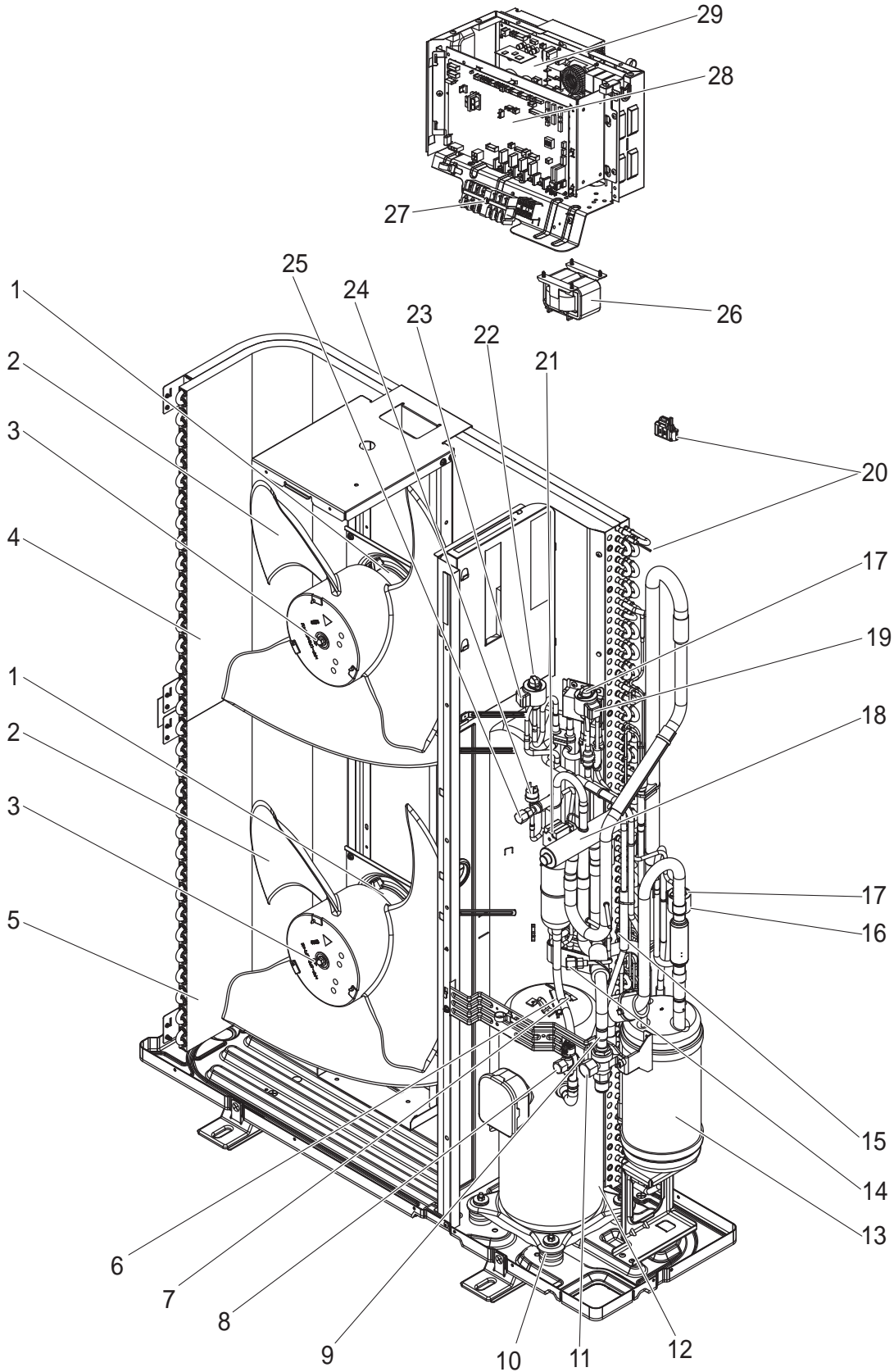


RoHS PARTS LIST

No.	RoHS	Parts No.	Parts Name	Specification	Q'ty/unit		Remarks (Drawing No.)	Wiring Diagram Symbol
					PUZ-ZM100VKA.UK	PUZ-ZM125VKA.UK		
1	G	S70 E95 763	FAN MOTOR		2	2		MF1,2
2	G	S70 E50 115	PROPELLER FAN		2	2		
3	G	S70 K01 097	NUT		2	2		
4	G	S70 E30 408	HEAT EXCHANGER (TOP)		1	1		
5	G	S70 E35 408	HEAT EXCHANGER (UNDER)		1	1		
6	G	S70 E57 202	THERMISTOR	Discharge	1	1		TH4
7	G	S70 E71 202	THERMISTOR	Comp. surface	1	1		TH33
8	G	S70 600 418	STOP VALVE (LIQUID)	3/8	1	1		
9	G	S70 36L 450	STRAINER	50#	1	1		
10	G	S70 E02 004	RUBBER MOUNT	1PC/ SET	4	4		
11	G	S70 E09 411	BALL VALVE (GAS)	5/8	1	1		
12	G	S70 E35 400	COMPRESSOR	AVB33FADMT	1	1		MC
13	G	S70 E14 440	POWER RECEIVER		1	1		
14	G	S70 E02 413	CHARGE PLUG		1	1		
15	G	S70 E58 202	THERMISTOR	Liquid	1	1		TH3
16	G	S70 E60 402	LEV COIL	UKV-A296	1	1	CONNECTOR: RED	LEV-B
17	G	S70 E96 401	EXPANSION VALVE	UKV-25D251	2	2	LEV A & B	
18	G	S70 E50 402	LEV COIL	UKV-A295	1	1	CONNECTOR: WHITE	LEV-A
19	G	S70 E07 403	4-WAY VALVE		1	1		
20	G	S70 E31 202	THERMISTOR	Ambient, 2-phase pipe	1	1		TH6,7
21	G	S70 E88 242	SOLENOID COIL <4-WAY VALVE>		1	1		21S4
22	G	S70 E10 208	HIGH PRESSURE SWITCH	OFF 4.14 MPA	1	1		63H
23	G	S70 E03 413	CHARGE PLUG		1	1		
24	G	S70 E11 716	TERMINAL BLOCK	6P (L,N,⊕,S1,S2,S3)	1	1		TB1
25	G	S70 K21 259	REACTOR	0.5 MH	1	1		DCL
26	G	S70 E44 315	CONTROLLER CIRCUIT BOARD		1	1		C.B.
27	G	S70 E46 313	POWER CIRCUIT BOARD		1	1		P.B.

RoHS PARTS LIST

FUNCTIONAL AND ELECTRICAL PARTS PUZ-ZM140VKA.UK

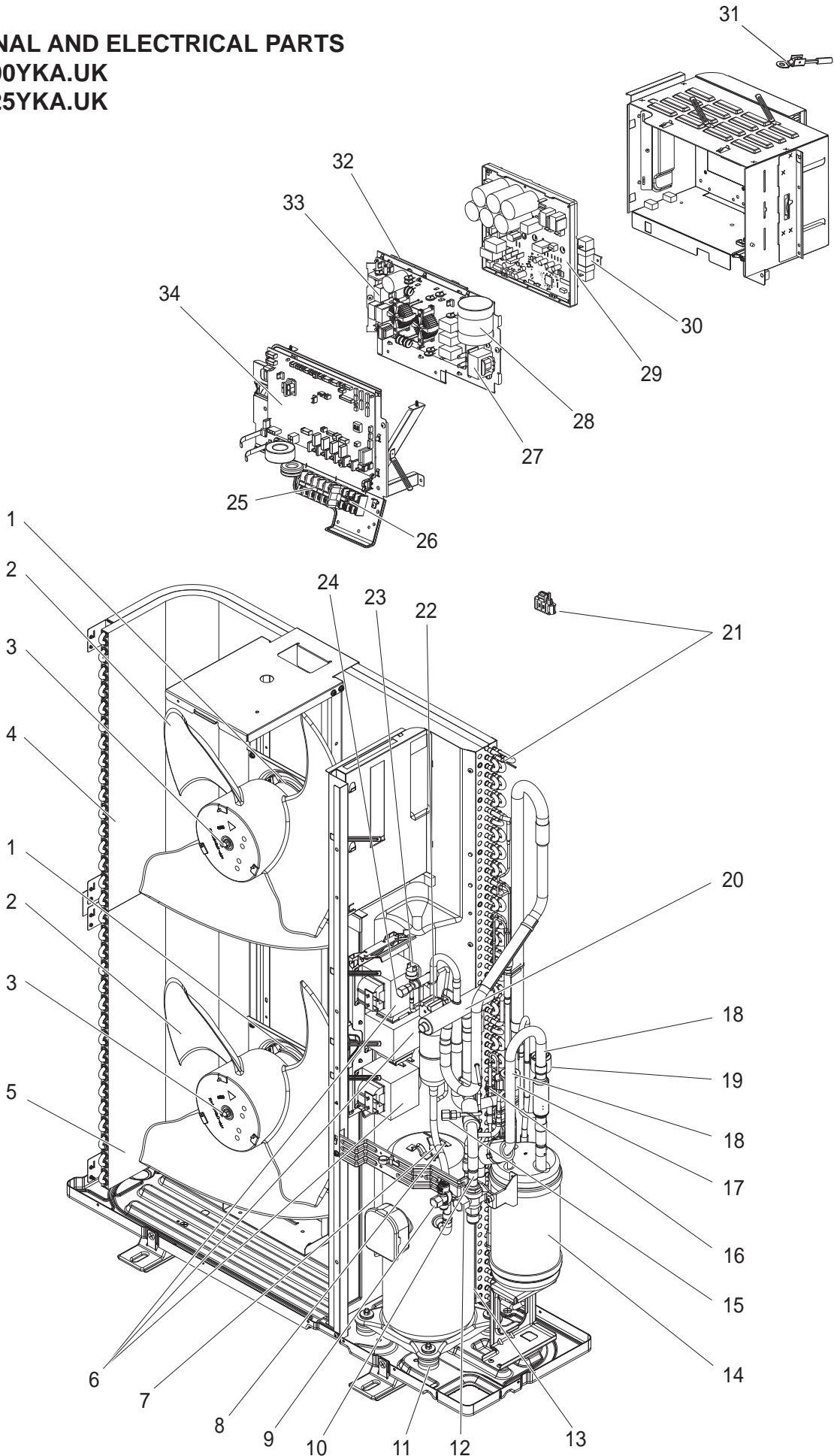


RoHS PARTS LIST

No.	RoHS	Parts No.	Parts Name	Specification	Q'ty/unit	Remarks (Drawing No.)	Wiring Diagram Symbol
					PUZ-ZM140VKA.UK		
1	G	S70 E95 763	FAN MOTOR		2		MF1,2
2	G	S70 E50 115	PROPELLER FAN		2		
3	G	S70 K01 097	NUT		2		
4	G	S70 E30 408	HEAT EXCHANGER (TOP)		1		
5	G	S70 E35 408	HEAT EXCHANGER (UNDER)		1		
6	G	S70 E57 202	THERMISTOR	Discharge	1		TH4
7	G	S70 E71 202	THERMISTOR	Comp. surface	1		TH33
8	G	S70 600 418	STOP VALVE (LIQUID)	3/8	1		
9	G	S70 36L 450	STRAINER	50#	1		
10	G	S70 E02 004	RUBBER MOUNT	1PC/ SET	4		
11	G	S70 E09 411	BALL VALVE (GAS)	5/8	1		
12	G	S70 E35 400	COMPRESSOR	AVB33FADMT	1		MC
13	G	S70 E14 440	POWER RECEIVER		1		
14	G	S70 E02 413	CHARGE PLUG		1		
15	G	S70 E58 202	THERMISTOR	Liquid	1		TH3
16	G	S70 E50 402	LEV COIL	UKV-A295	1	CONNECTOR: WHITE	LEV-A
17	G	S70 E96 401	EXPANSION VALVE	UKV-25D251	2	LEV A & B	
18	G	S70 E07 403	4-WAY VALVE		1		
19	G	S70 E60 402	LEV COIL	UKV-A296	1	CONNECTOR: RED	LEV-B
20	G	S70 E31 202	THERMISTOR	Ambient, 2-phase pipe	1		TH6,7
21	G	S70 E88 242	SOLENOID COIL <4-WAY VALVE>		1		21S4
22	G	S70 E95 401	EXPANSION VALVE	UKV-18D124	1		
23	G	S70 E77 402	LEV COIL	UK-A213	1	CONNECTOR: BLUE	LEV-C
24	G	S70 E10 208	HIGH PRESSURE SWITCH	OFF 4.14 MPA	1		63H
25	G	S70 E03 413	CHARGE PLUG		1		
26	G	S70 E11 716	TERMINAL BLOCK	6P (L,N,⊕,S1,S2,S3)	1		TB1
27	G	S70 K21 259	REACTOR	0.5 MH	1		DCL
28	G	S70 E44 315	CONTROLLER CIRCUIT BOARD		1		C.B.
29	G	S70 E46 313	POWER CIRCUIT BOARD		1		P.B.

RoHS PARTS LIST

FUNCTIONAL AND ELECTRICAL PARTS
PUZ-ZM100YKA.UK
PUZ-ZM125YKA.UK

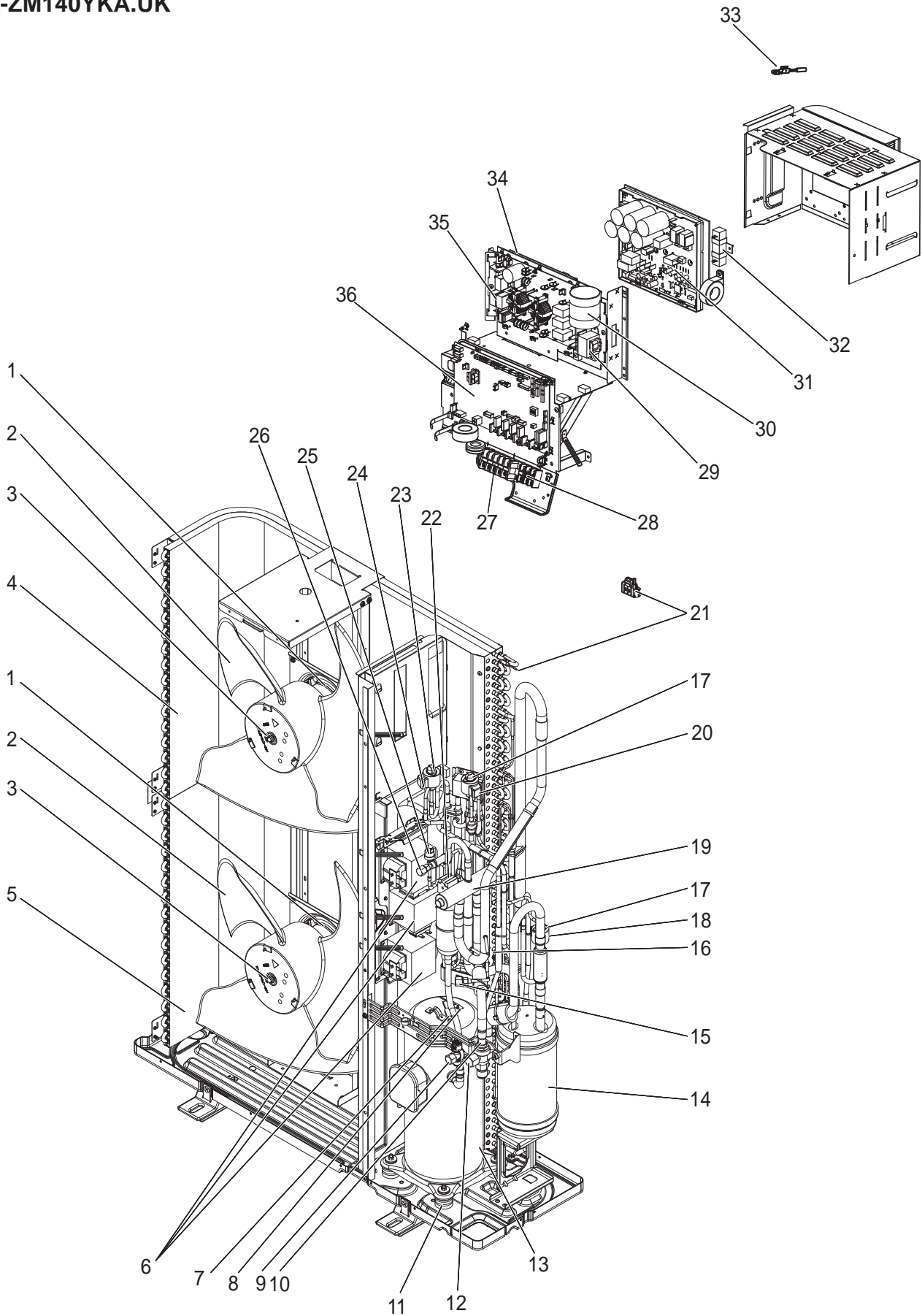


RoHS PARTS LIST

No.	RoHS	Parts No.	Parts Name	Specification	Q'ty/unit		Remarks (Drawing No.)	Wiring Diagram Symbol
					PUZ-ZM100YKA.UK	PUZ-ZM125YKA.UK		
1	G	S70 E95 763	FAN MOTOR		2	2		MF1,2
2	G	S70 E50 115	PROPELLER FAN		2	2		
3	G	S70 K01 097	NUT		2	2		
4	G	S70 E30 408	HEAT EXCHANGER (TOP)		1	1		
5	G	S70 E35 408	HEAT EXCHANGER (UNDER)		1	1		
6	G	S70 K70 259	REACTOR		3			ACL1, 2, 3
	G	S70 K75 259	REACTOR			3		ACL1, 2, 3
7	G	S70 E59 202	THERMISTOR	Discharge	1	1		TH4
8	G	S70 E72 202	THERMISTOR	Comp. surface	1	1		TH33
9	G	S70 600 418	STOP VALVE (LIQUID)	3/8	1	1		
10	G	S70 36L 450	STRAINER	50#	1	1		
11	G	S70 E02 004	RUBBER MOUNT	1PC/ SET	4	4		
12	G	S70 E09 411	BALL VALVE (GAS)	5/8	1	1		
13	G	S70 E36 400	COMPRESSOR	AVB33FACMT	1	1		MC
14	G	S70 E14 440	POWER RECEIVER		1	1		
15	G	S70 E02 413	CHARGE PLUG		1	1		
16	G	S70 E37 202	THERMISTOR	Liquid	1	1		TH3
17	G	S70 E60 402	LEV COIL	UKV-A296	1	1	CONNECTOR: RED	LEV-B
18	G	S70 E96 401	EXPANSION VALVE	UKV-25D251	2	2	LEV A & B	
19	G	S70 E50 402	LEV COIL	UKV-A295	1	1	CONNECTOR: WHITE	LEV-A
20	G	S70 E07 403	4-WAY VALVE		1	1		
21	G	S70 E60 202	THERMISTOR	Ambient, 2-phase pipe	1	1		TH6,7
22	G	S70 E88 242	SOLENOID COIL <4-WAY VALVE>		1	1		21S4
23	G	S70 E10 208	HIGH PRESSURE SWITCH	OFF 4.1 4 MPA	1	1		63H
24	G	S70 E03 413	CHARGE PLUG		1	1		
25	G	S70 E09 716	TERMINAL BLOCK	5P (L1, L2, L3, N,Ⓢ)	1	1		TB1
26	G	S70 E08 716	TERMINAL BLOCK	3P (S1,S2,S3)	1	1		TB2
27	G	S70 K25 259	REACTOR		1	1		ACL4
28	G	S70 E71 255	CAPACITOR		1	1		CK
29	G	S70 E44 313	POWER CIRCUIT BOARD		1	1		P.B.
30	G	S70 E20 234	RESISTOR		1	1		RS
31	G	S70 E55 202	THERMISTOR (HEAT SINK)		1	1		TH8
32	G	S70 E75 313	CONVERTER CIRCUIT BOARD		1	1		CONV.B.
33	G	S70 E54 346	NOISE FILTER CIRCUIT BOARD		1	1		N.F.
34	G	S70 E44 315	CONTROLLER CIRCUIT BOARD		1	1		C.B.

RoHS PARTS LIST

FUNCTIONAL AND ELECTRICAL PARTS PUZ-ZM140YKA.UK



RoHS PARTS LIST

No.	RoHS	Parts No.	Parts Name	Specification	Q'ty/unit	Remarks (Drawing No.)	Wiring Diagram Symbol
					PUZ-ZM140YKA.UK		
1	G	S70 E95 763	FAN MOTOR		2		MF1,2
2	G	S70 E50 115	PROPELLER FAN		2		
3	G	S70 K01 097	NUT		2		
4	G	S70 E30 408	HEAT EXCHANGER (TOP)		1		
5	G	S70 E35 408	HEAT EXCHANGER (UNDER)		1		
6	G	S70 K80 259	REACTOR		3		ACL1, 2, 3
7	G	S70 E59 202	THERMISTOR	Discharge	1		TH4
8	G	S70 E72 202	THERMISTOR	Comp. surface	1		TH33
9	G	S70 600 418	STOP VALVE (LIQUID)	3/8	1		
10	G	S70 36L 450	STRAINER	50#	1		
11	G	S70 E02 004	RUBBER MOUNT	1PC/ SET	4		
12	G	S70 E09 411	BALL VALVE (GAS)	5/8	1		
13	G	S70 E36 400	COMPRESSOR	AVB33FACMT	1		MC
14	G	S70 E14 440	POWER RECEIVER		1		
15	G	S70 E02 413	CHARGE PLUG		1		
16	G	S70 E37 202	THERMISTOR	Liquid	1		TH3
17	G	S70 E96 401	EXPANSION VALVE	UKV-25D251	2	LEV A & B	
18	G	S70 E50 402	LEV COIL	UKV-A295	1	CONNECTOR: WHITE	LEV-A
19	G	S70 E07 403	4-WAY VALVE		1		
20	G	S70 E60 402	LEV COIL	UKV-A296	1	CONNECTOR: RED	LEV-B
21	G	S70 E60 202	THERMISTOR	Ambient, 2-phase pipe	1		TH6,7
22	G	S70 E88 242	SOLENOID COIL <4-WAY VALVE>		1		21S4
23	G	S70 E95 401	EXPANSION VALVE	UKV-18D124	1		
24	G	S70 E77 402	LEV COIL		1	CONNECTOR: BLUE	LEV-C
25	G	S70 E10 208	HIGH PRESSURE SWITCH	OFF 4.14 MPA	1		63H
26	G	S70 E03 413	CHARGE PLUG		1		
27	G	S70 E09 716	TERMINAL BLOCK	5P (L1, L2, L3, N,⊕)	1		TB1
28	G	S70 E08 716	TERMINAL BLOCK	3P (S1,S2,S3)	1		TB2
29	G	S70 K25 259	REACTOR		1		ACL4
30	G	S70 E71 255	CAPACITOR		1		CK
31	G	S70 E44 313	POWER CIRCUIT BOARD		1		P.B.
32	G	S70 E20 234	RESISTOR		1		RS
33	G	S70 E55 202	THERMISTOR	Heat sink	1		TH8
34	G	S70 E75 313	CONVERTER CIRCUIT BOARD		1		CONV.B.
35	G	S70 E54 346	NOISE FILTER CIRCUIT BOARD		1		N.F.
36	G	S70 E44 315	CONTROLLER CIRCUIT BOARD		1		C.B.

RoHS PARTS LIST

STRUCTURAL PARTS

PUZ-ZM100VKA.UK

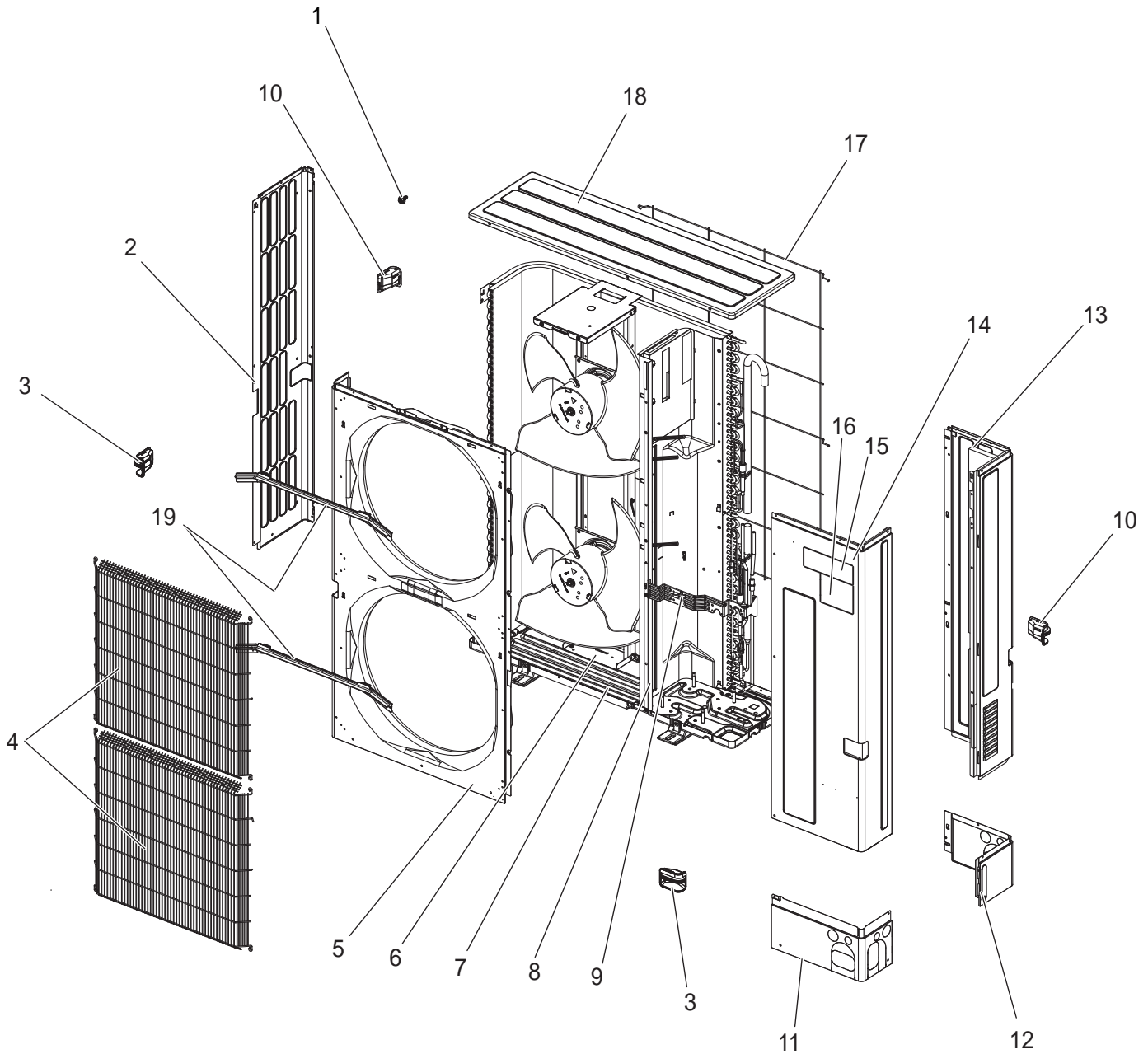
PUZ-ZM125VKA.UK

PUZ-ZM140VKA.UK

PUZ-ZM100YKA.UK

PUZ-ZM125YKA.UK

PUZ-ZM140YKA.UK



RoHS PARTS LIST

No.	RoHS	Parts No.	Parts Name	Specifi- cation	Q'ty/unit						Remarks (Drawing No.)
					PUZ-ZM100YKA.UK	PUZ-ZM125YKA.UK	PUZ-ZM140YKA.UK	PUZ-ZM100YKA.UK	PUZ-ZM125YKA.UK	PUZ-ZM140YKA.UK	
1	G	—	F.ST SCREW	(5x12)	45	45	45	45	45	45	(DG12F536H12)
2	G	S70 E17 662	SIDE PANEL (L)		1	1	1	1	1	1	
3	G	S70 E20 655	HANDLE (FRONT)		2	2	2	2	2	2	
4	G	S70 E40 675	FAN GRILLE		2	2	2	2	2	2	
5	G	S70 E61 668	FRONT PANEL		1	1	1	1	1	1	
6	G	S70 E90 130	MOTOR SUPPORT		1	1	1	1	1	1	
7	G	S70 E91 686	BASE ASSY		1	1	1	1	1	1	
8	G	—	SEPARATOR		1	1					(BK00N021G56)
	G	—	SEPARATOR				1				(BK00N021G62)
	G	—	SEPARATOR					1	1		(BK00N021G58)
	G	—	SEPARATOR							1	(BK00N021G63)
9	G	—	VALVE BED ASSY		1	1	1	1	1	1	(BK00R803G04)
10	G	S70 E30 655	HANDLE (REAR)		2	2	2	2	2	2	
11	G	S70 E55 658	COVER PANEL (FRONT)		1	1	1	1	1	1	
12	G	S70 E65 658	COVER PANEL (REAR)		1	1	1	1	1	1	
13	G	S70 E97 662	SIDE PANEL (R)		1	1	1	1	1	1	
14	G	S70 E47 661	SERVICE PANEL		1	1	1	1	1	1	
15	G	S70 E90 699	LABEL (BRAND)		1	1	1	1	1	1	
16	G	S70 E65 699	LABEL (MITSUBISHI)		1	1	1	1	1	1	
17	G	S70 E30 698	REAR GUARD		1	1	1	1	1	1	
18	G	S70 E60 641	TOP PANEL		1	1	1	1	1	1	
19	G	S70 E10 631	ICE GUARD		2	2	2	2	2	2	

Mr. SLIM

mitsubishi electric corporation

HEAD OFFICE : TOKYO BUILDING, 2-7-3, MARUNOUCHI, CHIYODA-KU, TOKYO 100-8310, JAPAN