

LGH-RVXT-E

Commercial Series



The Commercial Lossnay (LGH) Mechanical Ventilation Heat Recovery (MVHR) systems are designed to supply clean, fresh air into commercial buildings, whilst simultaneously extracting stale air.

The **RVXT** units offer a significantly reduced height whilst maintaining a large airflow, allowing easy installation in ceiling voids.

Key Features & Benefits:

- Fresh air ventilation for improved air quality
- Mitsubishi Electric pioneered heat exchanger enables maximised latent heat exchange, resulting in cost and carbon savings
- Lightweight structure ideal for ceiling installation
- No condensate drain requirement
- Unit height of 500mm for ease of application
- Compatible with Mr Slim and City Multi air conditioning systems for a complete and highly effective system operation
- Optional high efficiency filters available





MODEL		LGH-150RVXT-E	LGH-200RVXT-E	LGH-250RVXT-E	
Electrical Power Supply		220-240V, 50Hz	220-240V, 50Hz	220-240V, 50Hz	
Running Current (A)	SP1	0.36	0.39	0.57	
	SP2	1.10	1.10	1.40	
	SP3	2.40	2.70	3.60	
	SP4	4.30	5.40	7.60	
Input Power (W)	SP1	48	56	82	
	SP2	176	197	244	
	SP3	421	494	687	
	SP4	792	1000	1446	
Airflow (m ³ /h)*2	SP1	375	500	625	
	SP2	750	1000	1250	
	SP3	1125	1500	1875	
	SP4	1500	2000	2500	
Airflow (l/s)*2	SP1	104	139	174	
	SP2	208	278	347	
	SP3	313	417	521	
	SP4	417	556	694	
Specific Fan power (W/(l/s))	SP1	0.46	0.40	0.47	
	SP2	0.85	0.71	0.70	
	SP3	1.35	1.18	1.32	
	SP4	1.90	1.80	2.08	
External Static Pressure (Pa)	SP1	11	11	11	
	SP2	44	44	44	
	SP3	98	98	98	
	SP4	175	175	175	
Sound Pressure Level (dBA)	SP1	22	22	24	
	SP2	29.5	28	32	
	SP3	35.5	35.5	39	
	SP4	39.5	39.5	43	
Temperature Exchange Efficiency (%)	SP1	81.5	84	82.5	
Enthalpy Exchange Efficiency (%)	Heating	SP1	75	83	79
		SP2	73	77	74
	Cooling	SP3	71	73.5	71.5
		SP4	70	72.5	68
Weight (kg)	SP1	74	80.5	76.5	
	SP2	72	74.5	71.5	
	SP3	70	71	69	
	SP4	69	70	65.5	
Dimensions (mm)	Width x Depth x Height	1980 x 1500 x 500	1980 x 1500 x 500	1980 x 1500 x 500	
Duct Size (mm)		250 x 750	250 x 750	250 x 750	
Standard Filter*1		EU-G3	EU-G3	EU-G3	
Fuse Rating (BS88) – HRC (A)		10	10	10	

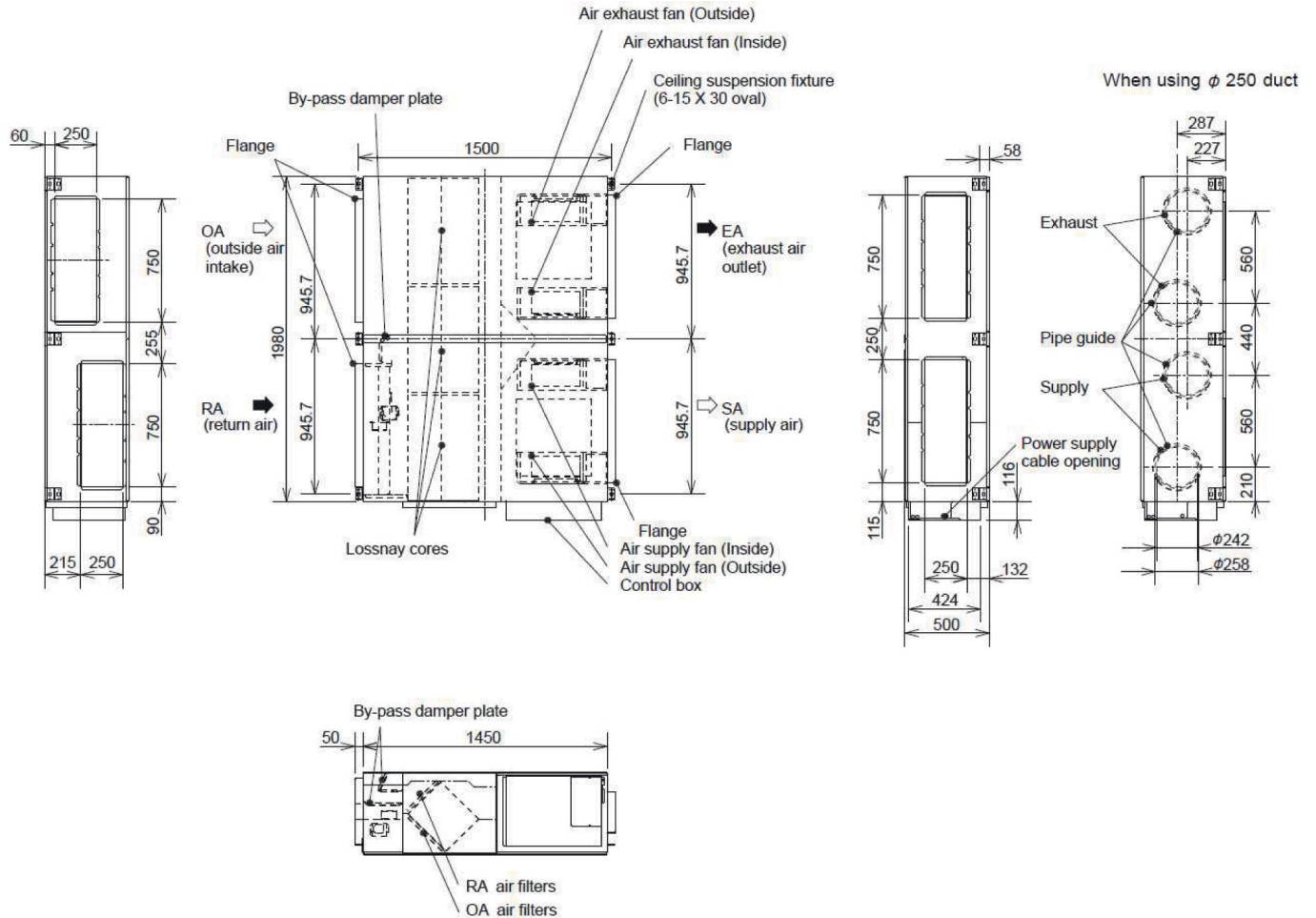
Notes: -Running Current, Input Power and Recovery Efficiency are based on the above airflow rate, power supply 240v, 50Hz. Sound Pressure Level measured at 1.5m under the centre of panel.

*1: M6 medium efficiency filter and F8 high efficiency filter available as optional parts. *2: Airflow tested to Japan industrial standard JIS B 8628. SP1, SP2, SP3 & SP4 relate to the fan speeds of the Lossnay RVXT units i.e. fanspeed 1, 2, 3 & 4.

ACCESSORIES		LGH-150RVXT-E	LGH-200RVXT-E	LGH-250RVXT-E
Remote Controller			PZ-62DR-EB	
Filters	ePM ₁₀ 75% / M6 filter		PZ-M6RTFM-E	
	ePM ₁ 65% / F8 filter		PZ-F8RTFM-E	



LGH-150/200/250RVXT-E DIMENSIONS



Telephone: 01 707 282880
email: air.conditioning@meuk.mee.com
les.mitsubishielectric.co.uk



@meuk_les
@green_gateway



Mitsubishi Electric Living
Environmental Systems UK



Mitsubishi Electric
Cooling and Heating UK



[mitsubishielectricuk_les](https://www.instagram.com/mitsubishielectricuk_les)



Mitsubishi Electric Living
Environmental Systems UK



thehub.mitsubishielectric.co.uk

UNITED KINGDOM Mitsubishi Electric Europe Living Environment Systems Division, Travellers Lane, Hatfield, Hertfordshire, AL10 8XB, England. Telephone: 01707 282880 Fax: 01707 278881
IRELAND Mitsubishi Electric Europe, Westgate Business Park, Ballymount, Dublin 24, Ireland. Telephone: (01) 419 8800 Fax: (01) 419 8890 International code: (003531)

Country of origin: United Kingdom - Italy - Turkey - Japan - Thailand - Malaysia. ©Mitsubishi Electric Europe 2022. Mitsubishi and Mitsubishi Electric are trademarks of Mitsubishi Electric Europe B.V. The company reserves the right to make any variation in technical specification to the equipment described, or to withdraw or replace products without prior notification or public announcement. Mitsubishi Electric is constantly developing and improving its products. All descriptions, illustrations, drawings and specifications in this publication present only general particulars and shall not form part of any contract. All goods are supplied subject to the Company's General Conditions of Sale, a copy of which is available on request. Third-party product and brand names may be trademarks or registered trademarks of their respective owners.

Note: Refer to 'Installation Manual' and 'Instruction Book' for further 'Technical Information'. The fuse rating is for guidance only and please refer to the relevant databook for detailed specification. It is the responsibility of a qualified electrician/electrical engineer to select the correct cable size and fuse rating based on current regulation and site specific conditions. Mitsubishi Electric's air conditioning equipment and heat pump systems contain a fluorinated greenhouse gas, R410A (GWP:2088), R32 (GWP:675), R407C (GWP:1774), R134a (GWP:1430), R513A (GWP:631), R454B (GWP:466), R1234ze (GWP:7) or R1234yf (GWP:4). *These GWP values are based on Regulation (EU) No 517/2014 from IPCC 4th edition. In case of Regulation (EU) No.626/2011 from IPCC 3rd edition, these are as follows. R410A (GWP:1975), R32 (GWP:550), R407C (GWP:1650) or R134a (GWP:1300).

Effective as of August 2022

