

Air Conditioning

Product Information

PFFY-P-VKM-E
Floor Standing Exposed
Indoor Unit

Making a
World of
Difference

CITY MULTI



The **PFFY-P-VKM-E** series is extremely versatile and is designed for wall attached installation at floor level. The auto swing vane provides a more natural and comfortable airflow throughout the room and the lightweight, compact design makes installation easy.

Key Features

- Pure white, slimline design
- Upper and lower vanes for optimum, powerful and efficient air distribution



Cooling | Heating | Ventilation | Controls

Air Conditioning

Product Information

PFFY-P-VKM-E
Floor Standing Exposed
Indoor Unit

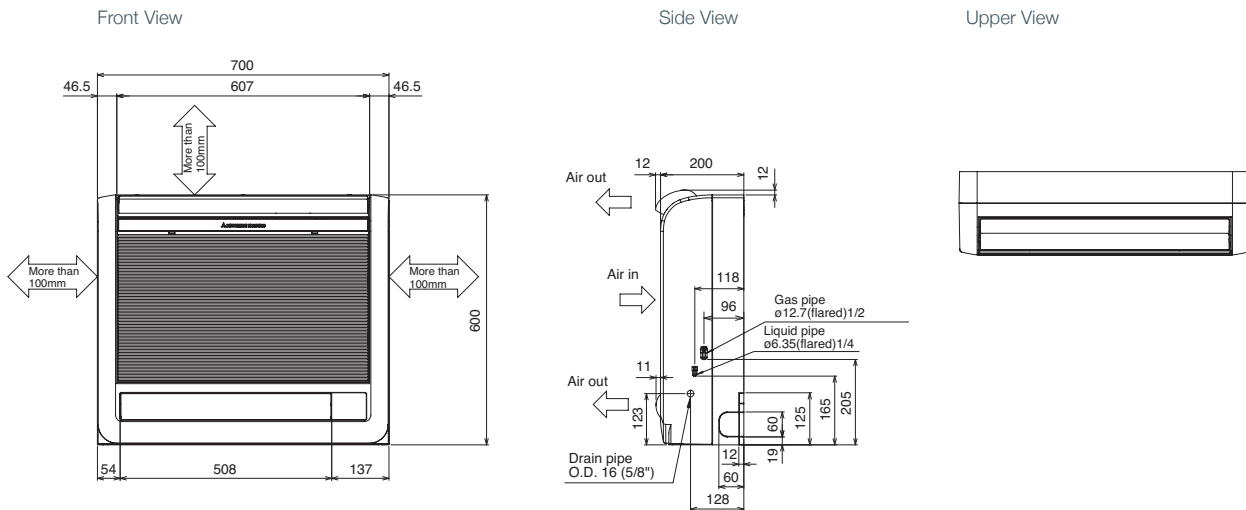
Making a
World of
Difference



INDOOR UNITS		PFFY-P20VKM-E	PFFY-P25VKM-E	PFFY-P32VKM-E	PFFY-P40VKM-E
CAPACITY (kW)	Heating (nominal)	2.5	3.2	4.0	5.0
	Cooling (nominal)	2.2	2.8	3.6	4.5
	UK Heating	2.5	3.2	4.0	5.0
	UK Total Cooling - Hi (Sensible)	2.00 (1.60)	2.50 (1.90)	3.20 (2.30)	4.10 (2.90)
	UK Total Cooling - Mi2	1.94	2.42	3.10	3.98
	UK Total Cooling - Mi1	1.86	2.31	2.96	3.92
POWER INPUT (kW)	UK Total Cooling - Lo	1.75	2.17	2.78	3.74
	Heating (nominal)	0.025	0.025	0.025	0.028
	Cooling (nominal)	0.025	0.025	0.025	0.028
AIRFLOW (l/s)	Lo-Mi1-Mi2-Hi	98-113-127-145	102-117-133-152	102-117-133-152	133-150-158-178
SOUND PRESSURE LEVEL (dBA)	Lo-Mi1-Mi2-Hi	27-31-34-37	28-32-35-38	28-32-35-38	35-38-42-44
WEIGHT (kg)		15	15	15	15
DIMENSIONS (mm)	Width	700	700	700	700
	Depth	200	200	200	200
	Height	600	600	600	600
ELECTRICAL SUPPLY		220-240v, 50Hz	220-240v, 50Hz	220-240v, 50Hz	220-240v, 50Hz
PHASE		Single	Single	Single	Single
RUNNING CURRENT (A)	Heating / Cooling	0.20 / 0.20	0.20 / 0.20	0.20 / 0.20	0.24 / 0.24
FUSE RATING (BS88) - HRC (A)		6	6	6	6
MAINS CABLE No. Cores		3	3	3	3

PRODUCT DIMENSIONS

PFFY-P20/25/32/40VKM-E



Telephone: 01707 282880
email: air.conditioning@meuk.mee.com
web: airconditioning.mitsubishielectric.co.uk

UNITED KINGDOM Mitsubishi Electric Europe Living Environment Systems Division
Travellers Lane, Hatfield, Hertfordshire, AL10 8XB, England General Enquiries Telephone: 01707 282880 Fax: 01707 278881

IRELAND Mitsubishi Electric Europe Westgate Business Park, Ballymount, Dublin 24, Ireland
Telephone: Dublin (01) 419 8800 Fax: Dublin (01) 419 8890 International code: (003531)

Country of origin: United Kingdom – Japan – Thailand – Malaysia. ©Mitsubishi Electric Europe 2017. Mitsubishi and Mitsubishi Electric are trademarks of Mitsubishi Electric Europe B.V. The company reserves the right to make any variation in technical specification to the equipment described, or to withdraw or replace products without prior notification or public announcement. Mitsubishi Electric is constantly developing and improving its products. All descriptions, illustrations, drawings and specifications in this publication present only general particulars and shall not form part of any contract. All goods are supplied subject to the Company's General Conditions of Sale, a copy of which is available on request. Third-party product and brand names may be trademarks or registered trademarks of their respective owners.

Note: The fuse rating is for guidance only. Please refer to the relevant databook for detailed specification. It is the responsibility of a qualified electrician/electrical engineer to select the correct cable size and fuse rating based on current regulation and site specific conditions. Mitsubishi Electric's air conditioning equipment and heat pump systems contain a fluorinated greenhouse gas, R410A (GWP:2088), R32 (GWP:675), R407C (GWP:1774) or R134a (GWP:1430). *These GWP values are based on Regulation (EU) No 517/2014 from IPCC 4th edition. In case of Regulation (EU) No.626/2011 from IPCC 3rd edition, these are as follows: R410A (GWP:1975), R32 (GWP: 550), R407C (GWP:1650) or R134a (GWP:1300).



www.greengateway.mitsubishielectric.co.uk

Mitsubishi Electric UK's commitment
to the environment

Follow us @meuk_Jes
Follow us @green_gateway

Mitsubishi Electric
Living Environmental Systems UK

mitsubishielectric2

thehub.mitsubishielectric.co.uk

Effective as of September 2017