



A compact concealed unit providing simple, effective air conditioning in perimeter zones. The unit is easy to install and at only 220mm deep offers an unobtrusive method of delivering highly efficient air-conditioning performance.

### Key Features

- Reduced noise levels
- 3 static pressure settings - 20/40/60Pa ideal for ducting in the perimeter zone
- Concealed unit for hidden installation. The unit can be hidden behind a wardrobe in a hotel, then ducted above and below the wardrobe doors - this offers lower noise, less disruption and a low visual impact

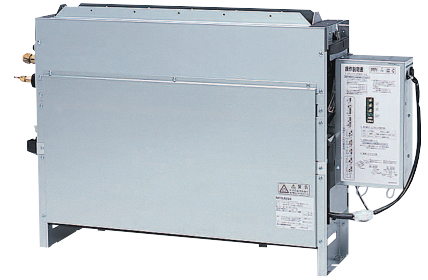


# Air Conditioning

## Product Information

### PFFY-WP-VLRMM-E (HVRF) Floor Standing Concealed Indoor Unit

Making a  
World of  
Difference



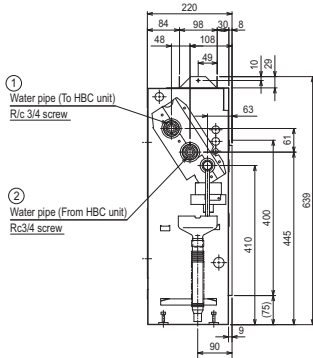
INDOOR UNITS		PFFY-WP20VLRMM-E	PFFY-WP25VLRMM-E	PFFY-WP32VLRMM-E	PFFY-WP40VLRMM-E	PFFY-WP50VLRMM-E
CAPACITY (kW)	Heating (nominal)	2.5	3.2	4.0	5.0	6.3
	Cooling (nominal)	2.2	2.8	3.6	4.5	5.6
	UK Heating	2.5	3.2	4.0	5.0	6.3
	UK Total Cooling - Hi (Sensible)	2.00 (1.50)	2.50 (2.00)	3.20 (2.50)	4.00 (3.10)	5.00 (3.90)
	UK Total Cooling - Mi2	-	-	-	-	-
	UK Total Cooling - Mi1	1.96	2.42	3.07	3.86	4.82
	UK Total Cooling - Lo	1.83	2.29	2.86	3.53	4.43
POWER INPUT (kW)	Heating (nominal)	0.04	0.04	0.05	0.05	0.07
	Cooling (nominal)	0.04	0.04	0.05	0.05	0.07
AIRFLOW (l/s)	Lo-Mi-Hi	75-83-100	100-117-133	125-150-175	133-167-192	175-217-250
EXTERNAL STATIC PRESSURE (Pa)		20-40-60	20-40-60	20-40-60	20-40-60	20-40-60
SOUND PRESSURE LEVEL (dBA) (20Pa)	Lo-Mi-Hi	31-33-38	31-33-38	31-35-38	34-37-40	37-42-45
WEIGHT (kg)		22	25	25	29	29
DIMENSIONS (mm)	Width	886	1006	1006	1246	1246
	Depth	220	220	220	220	220
	Height	639	639	639	639	639
ELECTRICAL SUPPLY		220-240v, 50Hz	220-240v, 50Hz	220-240v, 50Hz	220-240v, 50Hz	220-240v, 50Hz
PHASE		Single	Single	Single	Single	Single
RUNNING CURRENT (A)	Heating / Cooling	0.35 / 0.35	0.35 / 0.35	0.47 / 0.47	0.47 / 0.47	0.65 / 0.65
FUSE RATING (BS88) - HRC (A)		6	6	6	6	6
MAINS CABLE No. Cores		3	3	3	3	3
WATER PIPE CONNECTION		3/4" BSP SCREW	3/4" BSP SCREW	3/4" BSP SCREW	3/4" BSP SCREW	3/4" BSP SCREW

Notes: HVRF indoor units can only be configured with the CMB-WP HBC (HVRF) and PURY-(E)P YLM-A or PORY-P YLM-A outdoor units. Indoor unit water connections 3/4" BSP screw.

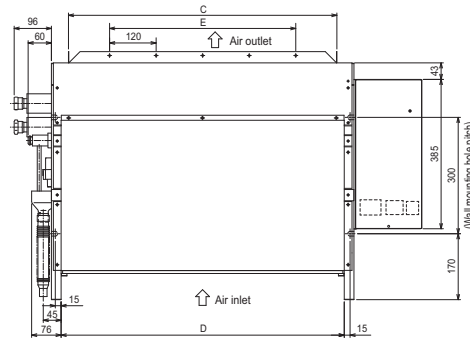
#### PRODUCT DIMENSIONS

#### PFFY-WP20/25/32/40/50VLRMM-E (HVRF)

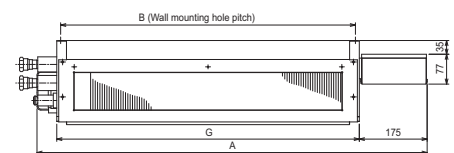
Side View



Front View



Upper View



Dimensions

Model	A	B	C	D	E	F	G	① Water pipe (To HBC unit)	② Water pipe (From HBC unit)
PFFY-WP20VLRMM-E	886	640	572	610	360	4	660	Rc3/4 screw	
PFFY-WP25VLRMM-E	1006	780	692	730	480	5	780		
PFFY-WP32VLRMM-E									
PFFY-WP40VLRMM-E									
PFFY-WP50VLRMM-E	1246	1000	932	970	720	7	1020		



Telephone: 01707 282880  
email: [air.conditioning@meuk.mee.com](mailto:air.conditioning@meuk.mee.com)  
web: [airconditioning.mitsubishielectric.co.uk](http://airconditioning.mitsubishielectric.co.uk)

UNITED KINGDOM Mitsubishi Electric Europe Living Environment Systems Division  
Travellers Lane, Hatfield, Hertfordshire, AL10 8XB, England General Enquiries Telephone: 01707 282880 Fax: 01707 278881

IRELAND Mitsubishi Electric Europe Westgate Business Park, Ballymount, Dublin 24, Ireland  
Telephone: Dublin (01) 419 8800 Fax: Dublin (01) 419 8890 International code: (003531)

Country of origin: United Kingdom – Japan – Thailand – Malaysia. ©Mitsubishi Electric Europe 2017. Mitsubishi and Mitsubishi Electric are trademarks of Mitsubishi Electric Europe B.V. The company reserves the right to make any variation in technical specification to the equipment described, or to withdraw or replace products without prior notification or public announcement. Mitsubishi Electric is constantly developing and improving its products. All descriptions, illustrations, drawings and specifications in this publication present only general particulars and shall not form part of any contract. All goods are supplied subject to the Company's General Conditions of Sale, a copy of which is available on request. Third-party product and brand names may be trademarks or registered trademarks of their respective owners.

Note: The fuse rating is for guidance only. Please refer to the relevant databook for detailed specification. It is the responsibility of a qualified electrician/electrical engineer to select the correct cable size and fuse rating based on current regulation and site specific conditions. Mitsubishi Electric's air conditioning equipment and heat pump systems contain a fluorinated greenhouse gas, R410A (GWP:2088), R32 (GWP:675), R407C (GWP:1774) or R134a (GWP:1430). \*These GWP values are based on Regulation (EU) No 517/2014 from IPCC 4th edition. In case of Regulation (EU) No.626/2011 from IPCC 3rd edition, these are as follows: R410A (GWP:1975), R32 (GWP: 550), R407C (GWP:1650) or R134a (GWP:1300).



[www.greengateway.mitsubishielectric.co.uk](http://www.greengateway.mitsubishielectric.co.uk)

Mitsubishi Electric UK's commitment to the environment

Follow us @meuk\_Jes  
Follow us @green\_gateway

Mitsubishi Electric  
Living Environmental Systems UK

mitsubishielectric2

thehub.mitsubishielectric.co.uk

Effective as of September 2017