

Air Conditioning

Product Information

VRF HP DXE
Heat Pump Air Curtain

Making a
World of
Difference

CITY MULTI



In collaboration with Thermoscreens®, Mitsubishi Electric have developed a range of heat pump air curtains that are able to be connected to our City Multi VRF systems, as opposed to the more traditional direct electric method associated with air curtains.

Key Features

- Reduced CO₂ emissions and run costs
- Allows open door policy in retail outlets whilst being energy efficient
- Clean environment - protection from dust, fumes etc
- Heat recovery possible, optimising energy use



thermoscreens®



Cooling | Heating | Ventilation | Controls

Air Conditioning

Product Information

VRF HP DXE Heat Pump Air Curtain

Making a
World of
Difference



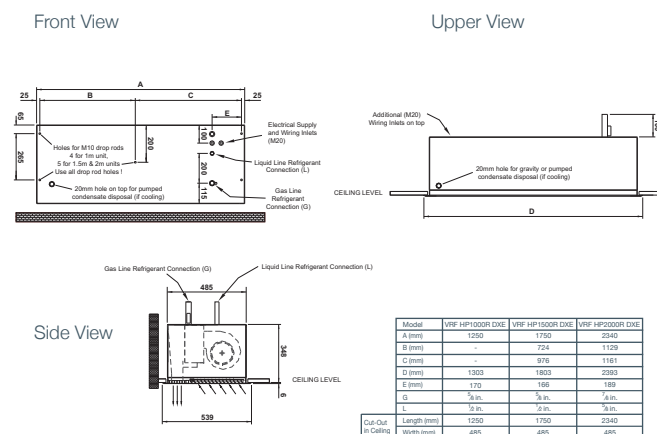
VRF HP DXE - RECESSED		VRF HP1000R DXE	VRF HP1500R DXE	VRF HP2000R DXE	VRF HP2000R DXE HO ³
CAPACITY (kW)	Heating (nominal) Cooling (nominal)	8.3 7.4	13.2 11.8	15.7 14.0	21.0 16.8
AIRFLOW MAX (l/s)		364	575	720	720
SOUND PRESSURE LEVEL AT 3m (dBA) Lo-Mi-Hi		50-55-58	49-54-58	50-55-58	50-55-58
WEIGHT (kg)		52	75	93	93
DIMENSIONS (mm)	Width Depth Height	1250 348 539	1750 348 539	2340 348 539	2340 348 539
ELECTRICAL SUPPLY ^{*1}		220-240v, 50Hz	220-240v, 50Hz	220-240v, 50Hz	220-240v, 50Hz
PHASE ^{*1}		Single	Single	Single	Single
RUNNING CURRENT (A) ^{*1}		0.8	1.2	1.4	1.4
MAINS CABLE No. Cores ^{*1}		3	3	3	3
UNIFORMITY AT OUTLET (%) ^{*2}		90	92	90	90
UNIT SIZE (Index)		P71	P125	P140	P200
MAX MOUNTING HEIGHT (m)		3.2	3.2	3.2	3.2
COMPATIBLE OUTDOOR UNITS		PUHY / PURY / PQHY / PQRY	PUHY / PURY / PQHY / PQRY	PUHY / PURY / PQHY / PQRY	PUHY / PURY / PQHY / PQRY

VRF HP DXE - FREE STANDING		VRF HP1000 DXE	VRF HP1500 DXE	VRF HP2000 DXE	VRF HP2000 DXE HO ³
CAPACITY (kW)	Heating (nominal) Cooling (nominal)	8.3 7.4	13.2 11.8	15.7 14	21.0 16.8
AIRFLOW MAX (l/s)		364	575	720	720
SOUND PRESSURE LEVEL AT 3m (dBA) Lo-Mi-Hi		50-55-58	49-54-58	50-55-58	50-55-58
WEIGHT (kg)		46	67	84	84
DIMENSIONS (mm)	Width Depth Height	1300 468 306	1825 468 306	2350 468 306	2350 468 306
ELECTRICAL SUPPLY ^{*1}		220-240v, 50Hz	220-240v, 50Hz	220-240v, 50Hz	220-240v, 50Hz
PHASE ^{*1}		Single	Single	Single	Single
RUNNING CURRENT (A) ^{*1}		0.8	1.2	1.4	1.4
MAINS CABLE No. Cores ^{*1}		3	3	3	3
UNIFORMITY AT OUTLET (%) ^{*2}		90	92	90	90
UNIT SIZE (Index)		P71	P125	P140	P200
MAX MOUNTING HEIGHT (m)		3.2	3.2	3.2	3.2
COMPATIBLE OUTDOOR UNITS		PUHY / PURY / PQHY / PQRY	PUHY / PURY / PQHY / PQRY	PUHY / PURY / PQHY / PQRY	PUHY / PURY / PQHY / PQRY

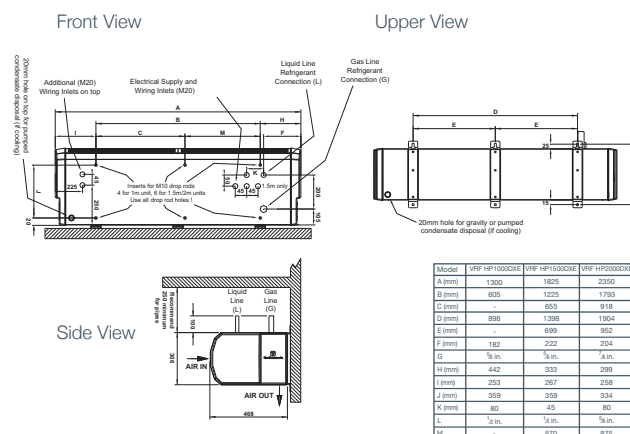
Notes: *1 For indoor units with electric defrost heaters enabled, 3ph, 380-415V power supply (7.3A HP1000, 12.1A HP1500, 14.4A HP2000). *2 Tested to ISO27327. *3 Includes twin LEV kit for installation with the air curtain.

PRODUCT DIMENSIONS

VRF HP1000/1500/2000R DXE (HO)



VRF HP1000/1500/2000 DXE (HO)



Telephone: 01707 282880

email: air.conditioning@meuk.mee.com

web: airconditioning.mitsubishielectric.co.uk

UNITED KINGDOM Mitsubishi Electric Europe Living Environment Systems Division

Travellers Lane, Hatfield, Hertfordshire, AL10 8XB, England General Enquiries Telephone: 01707 282880 Fax: 01707 278881

IRELAND Mitsubishi Electric Europe Westgate Business Park, Ballymount, Dublin 24, Ireland

Telephone: Dublin (01) 419 8800 Fax: Dublin (01) 419 8890 International code: (003531)

Country of origin: United Kingdom – Japan – Thailand – Malaysia. ©Mitsubishi Electric Europe 2017. Mitsubishi and Mitsubishi Electric are trademarks of Mitsubishi Electric Europe B.V. The company reserves the right to make any variation in technical specification to the equipment described, or to withdraw or replace products without prior notification or public announcement. Mitsubishi Electric is constantly developing and improving its products. All descriptions, illustrations, drawings and specifications in this publication present only general particulars and shall not form part of any contract. All goods are supplied subject to the Company's General Conditions of Sale, a copy of which is available on request. Third-party product and brand names may be trademarks or registered trademarks of their respective owners.

Notes: The fuse rating is for guidance only. Please refer to the relevant databook for detailed specification. It is the responsibility of a qualified electrician/electrical engineer to select the correct cable size and fuse rating based on current regulation and site specific conditions. Mitsubishi Electric's air conditioning equipment and heat pump systems contain a fluorinated greenhouse gas, R410A (GWP:2088), R32 (GWP:675), R407C (GWP:1774) or R134a (GWP:1430). *These GWP values are based on Regulation (EU) No 517/2014 from IPCC 4th edition. In case of Regulation (EU) No.626/2011 from IPCC 3rd edition, these are as follows: R410A (GWP:1975), R32 (GWP: 550), R407C (GWP:1650) or R134a (GWP:1300).



www.greengateway.mitsubishielectric.co.uk

Mitsubishi Electric UK's commitment to the environment

Follow us @meuk_Jes
Follow us @green_gateway

Mitsubishi Electric
Living Environment Systems UK

YouTube
mitsubishielectric2

BLOG
thehub.mitsubishielectric.co.uk

Effective as of September 2017