

PARTS CATALOG

<Outdoor unit>
MAIN UNIT
[Model Name]
[Service Ref.]

PUMY-SP112VKM	PUMY-SP112VKM.TH	PUMY-SP112VKMR1.TH
PUMY-SP125VKM	PUMY-SP125VKM.TH	PUMY-SP125VKMR1.TH
PUMY-SP140VKM	PUMY-SP140VKM.TH	PUMY-SP140VKMR1.TH
PUMY-SP112YKM	PUMY-SP112YKM.TH	PUMY-SP112YKMR1.TH
PUMY-SP125YKM	PUMY-SP125YKM.TH	PUMY-SP125YKMR1.TH
PUMY-SP140YKM	PUMY-SP140YKM.TH	PUMY-SP140YKMR1.TH

Revision:

- Added
PUMY-SP112VKMR1.TH,
PUMY-SP125VKMR1.TH,
PUMY-SP140VKMR1.TH,
PUMY-SP112YKMR1.TH,
PUMY-SP125YKMR1.TH and
PUMY-SP140YKMR1.TH
in REVISED EDITION-B.
- Some other descriptions
have been also modified.

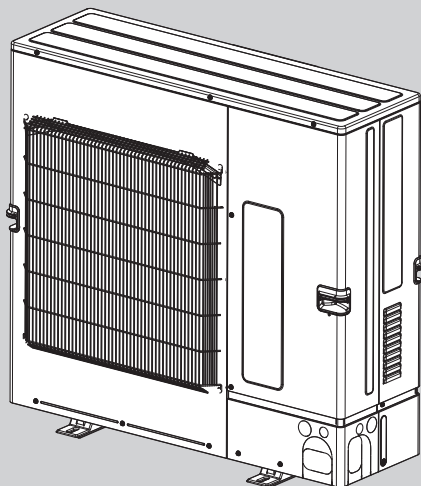
 OCB668 REVISED
 EDITION-A is void.

Salt proof model

PUMY-SP112VKM-BS	PUMY-SP112VKM.TH-BS	PUMY-SP112VKMR1.TH-BS
PUMY-SP125VKM-BS	PUMY-SP125VKM.TH-BS	PUMY-SP125VKMR1.TH-BS
PUMY-SP140VKM-BS	PUMY-SP140VKM.TH-BS	PUMY-SP140VKMR1.TH-BS
PUMY-SP112YKM-BS	PUMY-SP112YKM.TH-BS	PUMY-SP112YKMR1.TH-BS
PUMY-SP125YKM-BS	PUMY-SP125YKM.TH-BS	PUMY-SP125YKMR1.TH-BS
PUMY-SP140YKM-BS	PUMY-SP140YKM.TH-BS	PUMY-SP140YKMR1.TH-BS

Note:

- ROHS compliant products
have <G> mark on spec name
plate.


OUTDOOR UNIT
CONTENTS

1. SERVICE PARTS LIST(RoHS) 2
2. OPTIONAL PARTS 8

SERVICE MANUAL (OCH668)

1-1. STRUCTURAL PARTS

PUMY-SP112VKM(R1).TH

PUMY-SP125VKM(R1).TH

PUMY-SP140VKM(R1).TH

PUMY-SP112YKM(R1).TH

PUMY-SP125YKM(R1).TH

PUMY-SP140YKM(R1).TH

PUMY-SP112VKM(R1).TH-BS

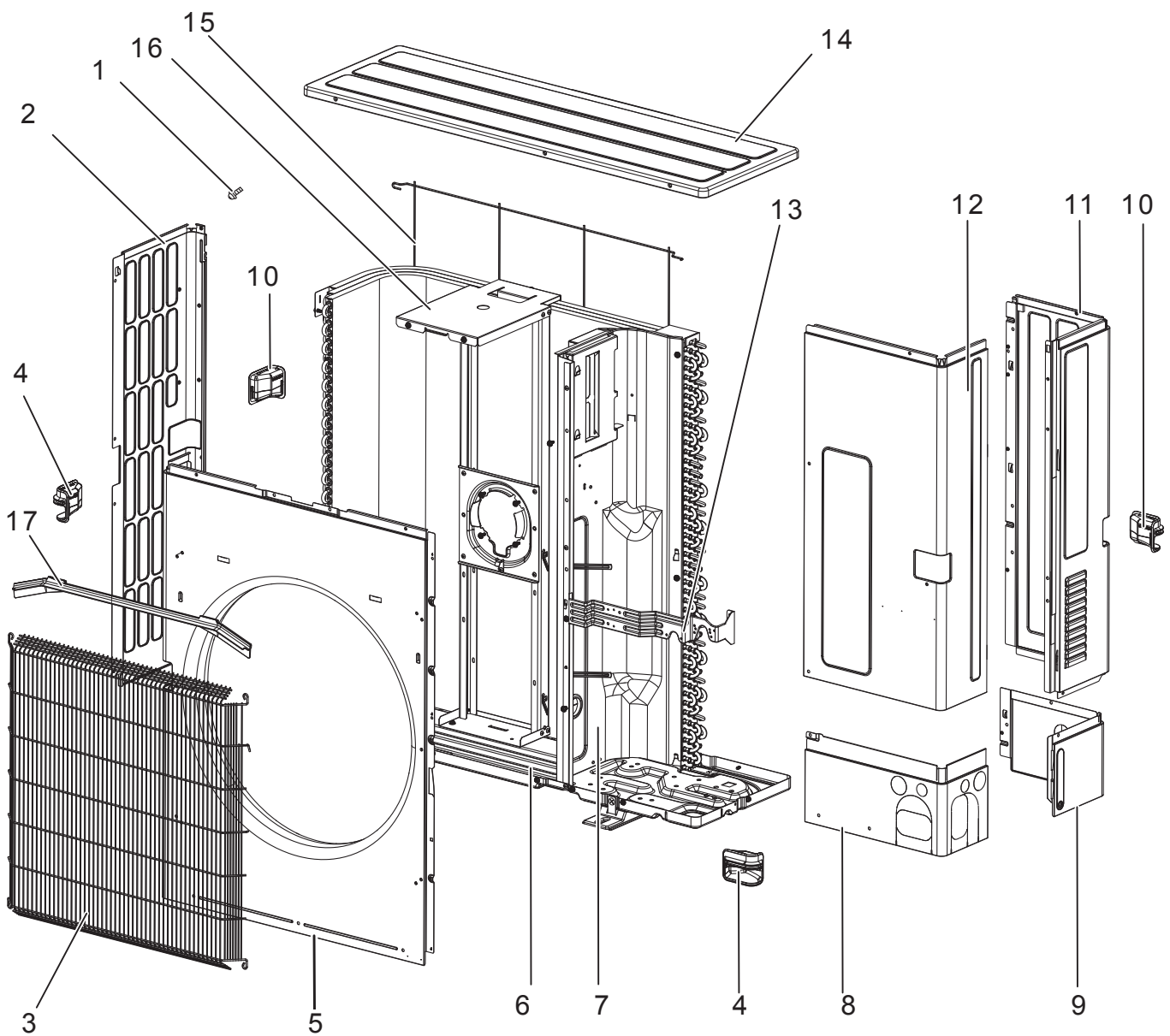
PUMY-SP125VKM(R1).TH-BS

PUMY-SP140VKM(R1).TH-BS

PUMY-SP112YKM(R1).TH-BS

PUMY-SP125YKM(R1).TH-BS

PUMY-SP140YKM(R1).TH-BS



SERVICE PARTS LIST (RoHS)

No.	RoHS	Parts No.	Parts Name	Specification	Q'ty/unit						Remarks (Drawing No.)	Wiring Diagram Symbol
					PUMY-SP112VKM(R1).TH	PUMY-SP125VKM(R1).TH	PUMY-SP140VKM(R1).TH	PUMY-SP112YKM(R1).TH	PUMY-SP125YKM(R1).TH	PUMY-SP140YKM(R1).TH		
1	G	E 17 942 250	F. ST SCREW	(5x12)	40	40	40	40	40	40		
2	G	E 17 E33 086	SIDE PANEL (L)		1	1	1	1	1	1		
3	G	E 17 H93 521	FAN GRILLE		1	1	1	1	1	1		
4	G	E 17 942 009	HANDLE (FRONT)		2	2	2	2	2	2	1PC/SET	
5	G	E 17 H93 232	FRONT PANEL		1	1	1	1	1	1		
6	G	E 17 E33 290	BASE ASSY		1	1	1	1	1	1		
7	G	E 17 H93 293	SEPARATOR		1	1	1	1	1	1		
8	G	E 17 E33 006	COVER PANEL (FRONT)		1	1	1	1	1	1		
9	G	E 17 E34 006	COVER PANEL (REAR)		1	1	1	1	1	1		
10	G	E 17 943 009	HANDLE (REAR)		2	2	2	2	2	2	1PC/SET	
11	G	E 17 E33 085	SIDE PANEL (R)		1	1	1	1	1	1		
12	G	E 17 H93 245	SERVICE PANEL		1	1	1	1	1	1		
13	G	—	STOP VALVE BED		1	1	1	1	1	1	(RK00B378G01)	
14	G	E 17 E33 297	TOP PANEL		1	1	1	1	1	1		
15	G	E 17 E33 523	REAR GUARD		1	1	1	1	1	1		
16	G	E 17 H93 515	MOTOR SUPPORT		1	1	1	1	1	1		
17	G	E 17 A15 531	ICE GUARD		1	1	1	1	1	1		

No.	RoHS	Parts No.	Parts Name	Specification	Q'ty/unit						Remarks (Drawing No.)	Wiring Diagram Symbol
					PUMY-SP112VKM(R1).TH-BS	PUMY-SP125VKM(R1).TH-BS	PUMY-SP140VKM(R1).TH-BS	PUMY-SP112YKM(R1).TH-BS	PUMY-SP125YKM(R1).TH-BS	PUMY-SP140YKM(R1).TH-BS		
1	G	E 17 942 250	F. ST SCREW	(5x12)	40	40	40	40	40	40		
2	G	E 17 H10 086	SIDE PANEL (L)		1	1	1	1	1	1		
3	G	E 17 H93 521	FAN GRILLE		1	1	1	1	1	1		
4	G	E 17 942 009	HANDLE (FRONT)		2	2	2	2	2	2	1PC/SET	
5	G	E 17 H99 232	FRONT PANEL		1	1	1	1	1	1		
6	G	E 17 H10 290	BASE ASSY		1	1	1	1	1	1		
7	G	E 17 H99 293	SEPARATOR		1	1	1	1	1	1		
8	G	E 17 H10 006	COVER PANEL (FRONT)		1	1	1	1	1	1		
9	G	E 17 H11 006	COVER PANEL (REAR)		1	1	1	1	1	1		
10	G	E 17 943 009	HANDLE(REAR)		2	2	2	2	2	2	1PC/SET	
11	G	E 17 H10 085	SIDE PANEL (R)		1	1	1	1	1	1		
12	G	E 17 H99 245	SERVICE PANEL		1	1	1	1	1	1		
13	G	—	STOP VALVE BED		1	1	1	1	1	1	(RK00B378G02)	
14	G	E 17 H10 297	TOP PANEL		1	1	1	1	1	1		
15	G	E 17 E33 523	REAR GUARD		1	1	1	1	1	1		
16	G	E 17 H99 515	MOTOR SUPPORT		1	1	1	1	1	1		
17	G	E 17 A15 531	ICE GUARD		1	1	1	1	1	1		

SERVICE PARTS LIST (RoHS)

1-2. FUNCTIONAL PARTS

PUMY-SP112VKM(R1).TH

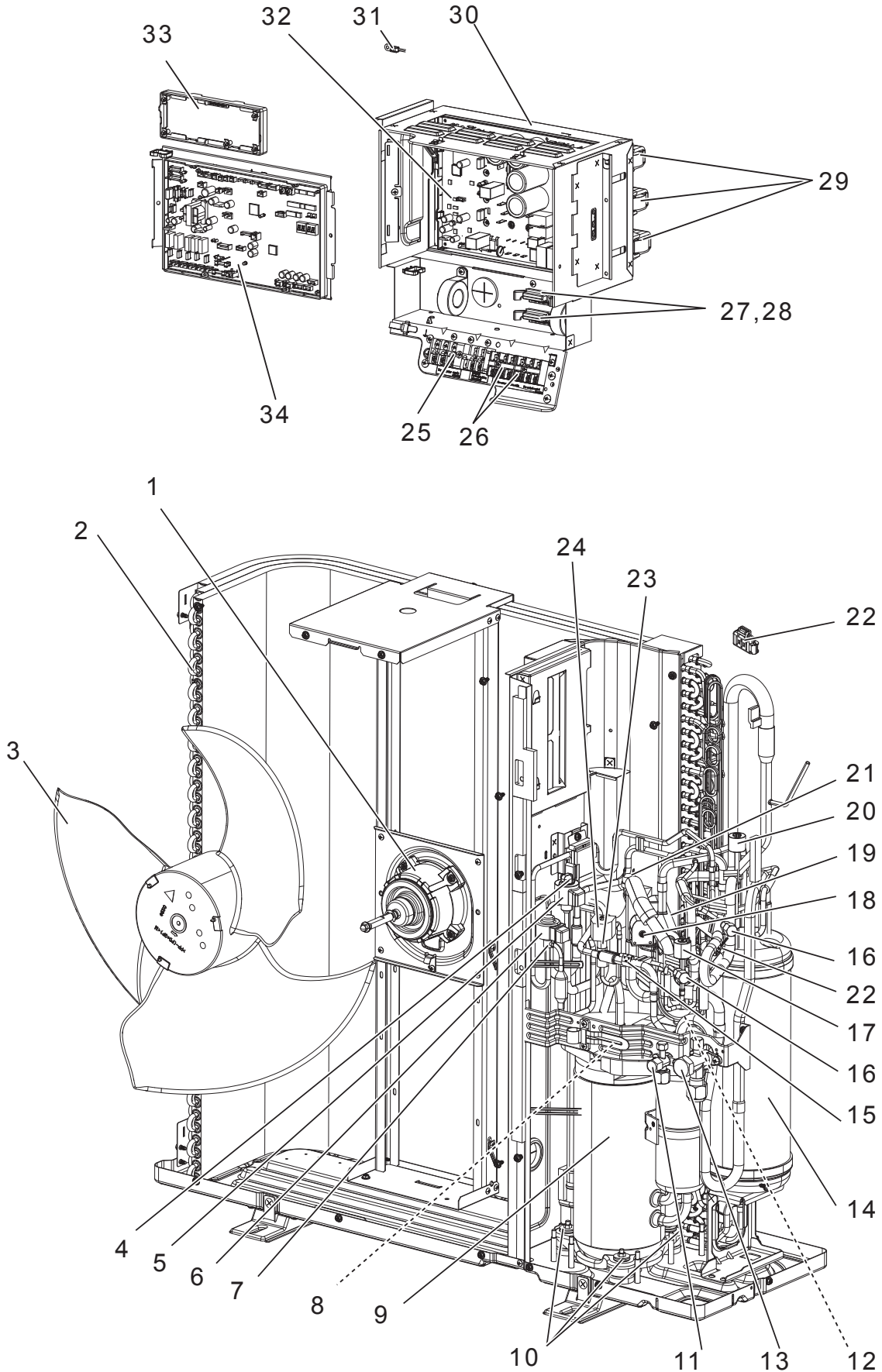
PUMY-SP125VKM(R1).TH

PUMY-SP140VKM(R1).TH

PUMY-SP112VKM(R1).TH-BS

PUMY-SP125VKM(R1).TH-BS

PUMY-SP140VKM(R1).TH-BS



SERVICE PARTS LIST (RoHS)

Parts numbers that are circled are not shown in the figures.

No.	RoHS	Parts No.	Parts Name	Specification	Q'ty/unit						Remarks (Drawing No.)	Wiring Diagram Symbol
					PUMY-SP112VKM(R1).TH	PUMY-SP125VKM(R1).TH	PUMY-SP140VKM(R1).TH	PUMY-SP112VKM(R1).TH-BS	PUMY-SP125VKM(R1).TH-BS	PUMY-SP140VKM(R1).TH-BS		
1	G	E17 F03 301	OUTDOOR FAN MOTOR		1	1	1	1	1	1		MF1
2	G	E17 H93 630	OUTDOOR HEAT EXCHANGER		1	1	1	1	1	1		
3	G	E17 942 501	PROPELLER FAN		1	1	1	1	1	1		
4	G	E17 H93 640	LINEAR EXPANTION VALVE		1	1	1	1	1	1		LEV-A
5	G	E17 H93 493	LINEAR EXPANTION VALVE COIL		1	1	1	1	1	1		LEV-A
6	G	E17 F03 493	LINEAR EXPANSION VALVE COIL		1	1	1	1	1	1		LEV-B
7	G	E17 F03 640	LINEAR EXPANTION VALVE		1	1	1	1	1	1		LEV-B
8	G	E17 F03 307	THERMISTOR	SHELL	1	1	1	1	1	1		TH4
9	G	E17 F93 900	COMPRESSOR	MNB V	1	1	1	1	1	1		MC
10	G	E12 267 506	COMPRESSOR RUBBER SET		3	3	3	3	3	3	3PCS/SET	
11	G	E17 942 661	STOP VALVE (LIQUID)	3/8	1	1	1	1	1	1		
12	G	E17 F03 299	OIL SEPARATOR		1	1	1	1	1	1		
13	G	E17 F03 661	STOP VALVE (GAS)	5/8	1	1	1	1	1	1		
14	G	E17 H93 932	ACCUMULATOR		1	1	1	1	1	1		
15	G	E17 F04 307	THERMISTOR	HIC	1	1	1	1	1	1		TH2
16	G	E17 942 641	CHARGE PLUG		2	2	2	2	2	2		
17	G	E17 F03 647	LOW PRESSURE SENSOR		1	1	1	1	1	1		63LS
18	G	E17 H93 490	R.V. COIL		1	1	1	1	1	1		21S4
19	G	E12 R55 961	4-WAY VALVE		1	1	1	1	1	1		
20	G	E17 F03 646	HIGH PRESSURE SENSOR		1	1	1	1	1	1		63HS
21	G	E17 942 646	HIGH PRESSURE SWITCH	4.14MPA	1	1	1	1	1	1		63H
22	G	E17 F05 307	THERMISTOR	Suction Pipe, Ambient	1	1	1	1	1	1		TH6, TH7
23	G	E17 F03 492	SOLENOID VALVE		1	1	1	1	1	1		
24	G	E17 A16 490	SOLENOID VALVE COIL		1	1	1	1	1	1		SV1
25	G	E17 F08 374	TERMINAL BLOCK	5P(L, N, E, B1, B2)	1	1	1	1	1	1		TB1
26	G	E17 704 375	TERMINAL BLOCK	3P(M1, M2, S)	2	2	2	2	2	2		TB3, TB7
27	G	E12 735 382	FUSE		2	2	2	2	2	2		FUSE1, FUSE2
28	G	E12 735 241	FUSE HOLDER		2	2	2	2	2	2		
29	G	E17 E45 337	REACTOR SET		3	3	3	3	3	3	3PCS/SET	DCL1, DCL2 DCL3
30	G	—	ELECTRICAL BOX		1	1	1	1	1	1	(BK00N051G30)	
31	G	E17 E45 307	THERMISTOR	Heat sink	1	1	1	1	1	1		TH8
32	G	E17 H93 440	POWER BOARD		1	1	1	1	1	1		P.B.
33	G	E17 A15 456	M-NET POWER BOARD		1	1	1	1	1	1		M-NET P.B.
34	G	E17 H93 450	MULTI CONTROLLER BOARD		1	1	1	1	1	1		MULTI.B.
35	G	E17 944 307	THERMISTOR	Outdoor Liquid Pipe	1	1	1	1	1	1		TH3

SERVICE PARTS LIST (RoHS)

1-2. FUNCTIONAL PARTS

PUMY-SP112YKM(R1).TH

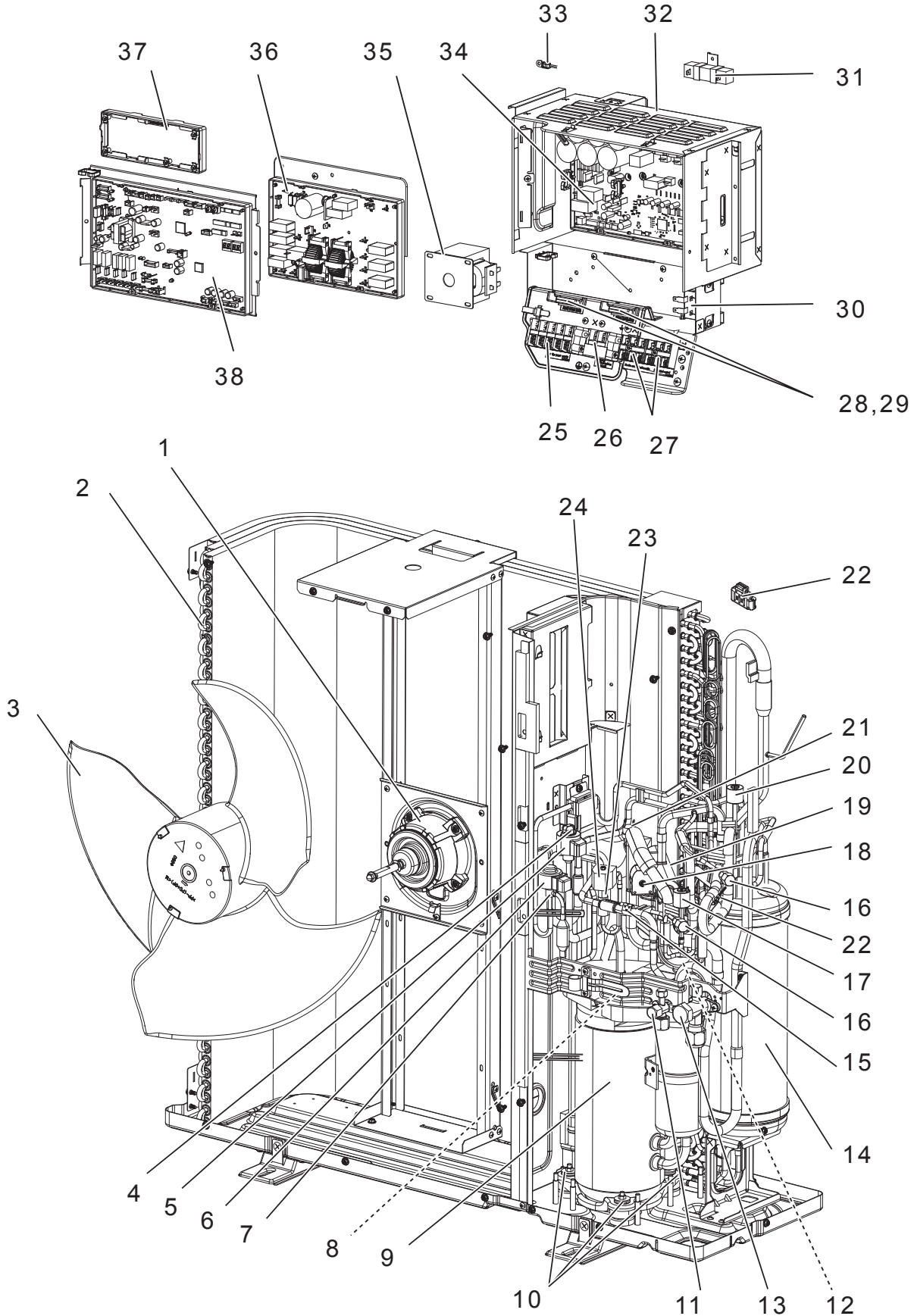
PUMY-SP125YKM(R1).TH

PUMY-SP140YKM(R1).TH

PUMY-SP112YKM(R1).TH-BS

PUMY-SP125YKM(R1).TH-BS

PUMY-SP140YKM(R1).TH-BS



SERVICE PARTS LIST (RoHS)

Parts numbers that are circled are not shown in the figures.

No.	RoHS	Parts No.	Parts Name	Specification	Q'ty/unit						Remarks (Drawing No.)	Wiring Diagram Symbol
					PUMY-SP112YKM(R1).TH	PUMY-SP125YKM(R1).TH	PUMY-SP140YKM(R1).TH	PUMY-SP112YKM(R1).TH+BS	PUMY-SP125YKM(R1).TH+BS	PUMY-SP140YKM(R1).TH+BS		
1	G	E17 F03 301	OUTDOOR FAN MOTOR		1	1	1	1	1	1		MF1
2	G	E17 H93 630	OUTDOOR HEAT EXCHANGER		1	1	1	1	1	1		
3	G	E17 942 501	PROPELLER FAN		1	1	1	1	1	1		
4	G	E17 H93 640	LINEAR EXPANTION VALVE		1	1	1	1	1	1		LEV-A
5	G	E17 H93 493	LINEAR EXPANTION VALVE COIL		1	1	1	1	1	1		LEV-A
6	G	E17 F03 493	LINEAR EXPANSION VALVE COIL		1	1	1	1	1	1		LEV-B
7	G	E17 F03 640	LINEAR EXPANTION VALVE		1	1	1	1	1	1		LEV-B
8	G	E17 F03 307	THERMISTOR	SHELL	1	1	1	1	1	1		TH4
9	G	E17 F03 900	COMPRESSOR	MNB Y	1	1	1	1	1	1		MC
10	G	E12 267 506	COMPRESSOR RUBBER SET		3	3	3	3	3	3	3PCS/SET	
11	G	E17 942 661	STOP VALVE (LIQUID)	3/8	1	1	1	1	1	1		
12	G	E17 F03 299	OIL SEPARATOR		1	1	1	1	1	1		
13	G	E17 F03 661	STOP VALVE (GAS)	5/8	1	1	1	1	1	1		
14	G	E17 H93 932	ACCUMULATOR		1	1	1	1	1	1		
15	G	E17 F04 307	THERMISTOR	HIC	1	1	1	1	1	1		TH2
16	G	E17 942 641	CHARGE PLUG		2	2	2	2	2	2		
17	G	E17 F03 647	LOW PRESSURE SENSOR		1	1	1	1	1	1		63LS
18	G	E17 H93 490	R.V. COIL		1	1	1	1	1	1		21S4
19	G	E12 R55 961	4-WAY VALVE		1	1	1	1	1	1		
20	G	E17 F03 646	HIGH PRESSURE SENSOR		1	1	1	1	1	1		63HS
21	G	E17 942 646	HIGH PRESSURE SWITCH	4.14MPA	1	1	1	1	1	1		63H
22	G	E17 F05 307	THERMISTOR	Suction Pipe, Ambient	1	1	1	1	1	1		TH6, TH7
23	G	E17 F03 492	SOLENOID VALVE		1	1	1	1	1	1		SV1
24	G	E17 A16 490	SOLENOID VALVE COIL		1	1	1	1	1	1		SV1
25	G	E17 943 374	TERMINAL BLOCK	5P (L1, L2, L3, N, ⊕)	1	1	1	1	1	1		TB1
26	G	E17 C47 374	TERMINAL BLOCK	2P (B1, B2)	1	1	1	1	1	1		TB1B
27	G	E17 704 375	TERMINAL BLOCK	3P(M1, M2, S)	2	2	2	2	2	2		TB3, TB7
28	G	E12 735 382	FUSE		2	2	2	2	2	2		FUSE1, FUSE2
29	G	E12 735 241	FUSE HOLDER		2	2	2	2	2	2		
30	G	E17 943 337	REACTOR		1	1	1	1	1	1		ACL4
31	G	E17 E33 360	RESISTOR		1	1	1	1	1	1		RS
32	G	—	ELECTRICAL BOX		1	1	1	1	1	1	(BK00N051G33)	
33	G	E17 E35 307	THERMISTOR	Heat sink	1	1	1	1	1	1		TH8
34	G	E17 E33 440	POWER BOARD		1	1	1	1	1	1		P.B.
35	G	E17 945 337	REACTOR		1	1	1	1	1	1		DCL
36	G	E17 H96 444	NOISE FILTER P.C. BOARD		1	1	1	1	1	1		N.F.
37	G	E17 A15 456	M-POWER BOARD		1	1	1	1	1	1		M-NET P.B.
38	G	E17 L55 450	MULTI CONTROLLER BOARD		1	1	1	1	1	1		MULTI. B.
39	G	E17 944 307	THERMISTOR	Outdoor Liquid Pipe	1	1	1	1	1	1		TH3

2

OPTIONAL PARTS

2-1. FOR OUTDOOR UNIT

DRAIN SOCKET

Parts No.	PAC-SG61DS-E
-----------	--------------

AIR OUTLET GUIDE

Parts No.	PAC-SH96SG-E
-----------	--------------

AIR PROTECT GUIDE

Parts No.	PAC-SH95AG-E
-----------	--------------

DRAIN PAN

Parts No.	PAC-SH97DP-E
-----------	--------------

BRANCH PIPE (Joint)

Parts No.	NUMBER OF BRANCHING POINTS
CMY-Y62-G-E	2
CMY-Y64-G-E	4
CMY-Y68-G-E	8

LEV-KIT

Parts No.	PAC-LV11M-J
-----------	-------------

BRANCH BOX

Parts No.	PAC-MK31BC (Flare)
	PAC-MK51BC (Flare)
	PAC-MK31BCB(Brazing)
	PAC-MK51BCB(Brazing)
	PAC-MK33BC(Flare)
	PAC-MK53BC(Flare)
	PAC-MK33BCB(Brazing)
	PAC-MK53BCB(Brazing)

Note: PUMY-SP·VKM.TH(-BS),PUMY-SP·YKM.TH(-BS) cannot connect 52/ 32 series.
 PUMY-SP·VKMR1.TH(-BS),PUMY-SP·YKMR1.TH(-BS) cannot connect 31/32/51/52 series.

BASE HEATER

Parts No.	PAC-SJ10BH-E
-----------	--------------

2-2. FOR BRANCH BOX

BRANCH BOX OUTER COVER (for outdoor installation)

Parts No.	PAC-AK350CVR-E
-----------	----------------

DIFFERENT-DIAMETER JOINT

Different-diameter joint (optional parts) (Fig.2-1)

Model name	Connected pipes diameter	Diameter A	Diameter B
	mm	mm	mm
MAC-A454JP	$\phi 9.52 \rightarrow \phi 12.7$	$\phi 9.52$	$\phi 12.7$
MAC-A455JP	$\phi 12.7 \rightarrow \phi 9.52$	$\phi 12.7$	$\phi 9.52$
MAC-A456JP	$\phi 12.7 \rightarrow \phi 15.88$	$\phi 12.7$	$\phi 15.88$
PAC-493PI	$\phi 6.35 \rightarrow \phi 9.52$	$\phi 6.35$	$\phi 9.52$
PAC-SG76RJ-E	$\phi 9.52 \rightarrow \phi 15.88$	$\phi 9.52$	$\phi 15.88$

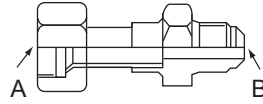


Fig.2-1

Conversion formula

1/4 inch	$\phi 6.35\text{mm}$
3/8 inch	$\phi 9.52\text{mm}$
1/2 inch	$\phi 12.7\text{mm}$
5/8 inch	$\phi 15.88\text{mm}$
3/4 inch	$\phi 19.05\text{mm}$

Different-diameter joint (optional parts for brazing model) (Fig.2-2)

Model name	Connected pipes diameter	Diameter A	Diameter B
	mm	mm	mm
PAC-SG78RJB-E	$\phi 9.52 \rightarrow \phi 12.7$	$\phi 9.52$	$\phi 12.7$
PAC-SG79RJB-E	$\phi 12.7 \rightarrow \phi 9.52$	$\phi 12.7$	$\phi 9.52$
PAC-SG80RJB-E	$\phi 12.7 \rightarrow \phi 15.88$	$\phi 12.7$	$\phi 15.88$
PAC-SG77RJB-E	$\phi 6.35 \rightarrow \phi 9.52$	$\phi 6.35$	$\phi 9.52$
PAC-SG76RJB-E	$\phi 9.52 \rightarrow \phi 15.88$	$\phi 9.52$	$\phi 15.88$



Fig.2-2

CITY MULTI

MITSUBISHI ELECTRIC CORPORATION

HEAD OFFICE : TOKYO BUILDING, 2-7-3, MARUNOUCHI, CHIYODA-KU, TOKYO 100-8310, JAPAN
