



PARTS CATALOG

R410A

Outdoor unit
[Model Name]

SUZ-SA71VA3

SUZ-SA100VA2

[Service Ref.]

SUZ-SA71VA3.TH

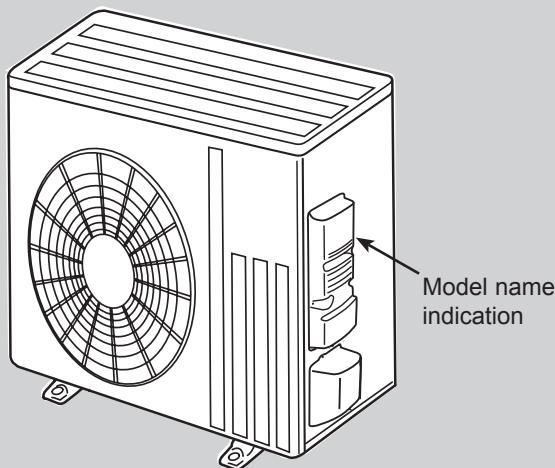
SUZ-SA100VA2.TH

Notes:

- RoHS compliant products have <G> mark on the spec name plate.
- For servicing of RoHS compliant products, refer to the RoHS Parts List.

CONTENTS

1. RoHS PARTS LIST..... 2

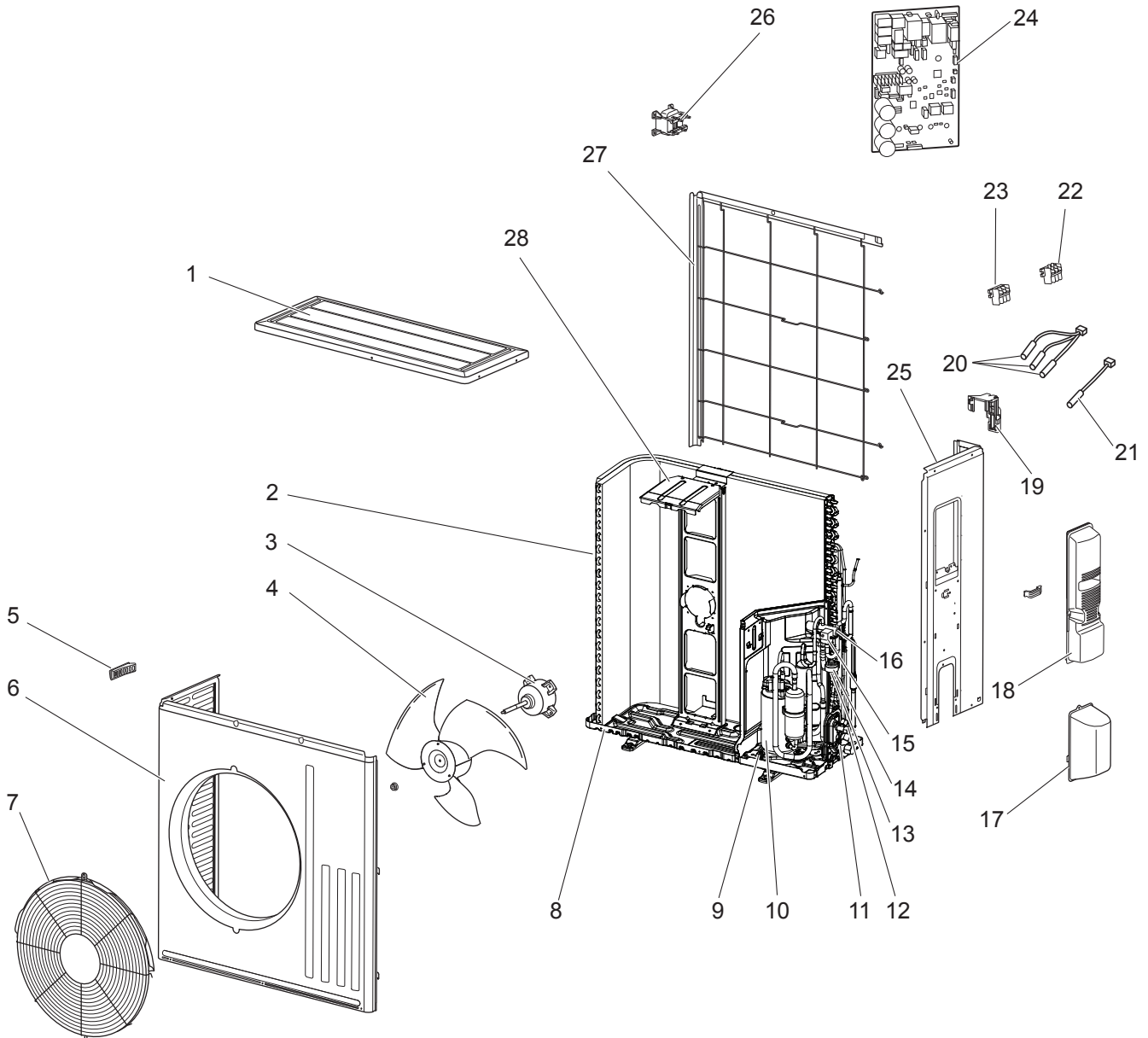


SERVICE MANUAL (TCH030)

SUZ-SA71VA3.TH

SUZ-SA100VA2.TH

OUTDOOR UNIT STRUCTURAL PARTS, ELECTRICAL PARTS AND FUNCTIONAL PARTS



RoHS PARTS LIST

Parts numbers that are circled are not shown in the illustration.

No.	RoHS	Parts No.	Parts Name	Symbol in Wiring Diagram	Q'ty/unit		Remarks
					SUZ-SA71VA3.TH	SUZ-SA100VA2.TH	
1	G	E12 L87 297	TOP PANEL		1	1	
2	G	E12 J61 630	OUTDOOR HEAT EXCHANGER		1		
	G	E12 J62 630	OUTDOOR HEAT EXCHANGER			1	
3	G	E12 F28 301	OUTDOOR FAN MOTOR	MF	1	1	
4	G	E12 F28 501	PROPELLER FAN		1	1	
5	G	E12 817 009	HANDLE		1	1	
6	G	E12 R13 232	CABINET		1	1	
7	G	E12 F73 521	FAN GUARD		1	1	
8	G	E12 F28 290	BASE		1	1	
9	G	E12 C34 506	COMPRESSOR RUBBER SET		3	3	3 RUBBERS/SET
10	G	E17 B31 900	COMPRESSOR	MC	1		SNB140FRKMT
	G	E17 L41 900	COMPRESSOR	MC		1	SNB220FBGM1T
11	G	E12 F28 661	STOP VALVE(GAS)		1	1	φ15.88
12	G	E12 F29 662	STOP VALVE(LIQUID)		1	1	φ9.52
13	G	E12 853 640	EXPANSION VALVE		1	1	
14	G	E12 F28 493	EXPANSION VALVE COIL	LEV	1	1	
15	G	E12 J61 490	R.V.COIL	21S4	1	1	
16	G	E12 J61 961	4-WAY VALVE		1	1	
17	G	E12 F28 650	VALVE COVER		1	1	
18	G	E12 J61 245	SERVICE PANEL		1	1	
19	G	E12 F28 079	THERMO HOLDER		1	1	
20	G	E12 F28 308	THERMISTOR SET	RT61 RT62 RT68	1	1	DEFROST, DISCHARGE OUTDOOR HEAT EXCHANGER TEMPERATURE
21	G	E12 J61 309	AMBIENT TEMP. THERMISTOR	RT65	1	1	
22	G	E12 F28 374	TERMINAL BLOCK	TB1	1		3P (L, N, ⊕)
	G	E12 E11 374	TERMINAL BLOCK	TB1		1	3P (L, N, ⊕)
23	G	E12 F29 374	TERMINAL BLOCK	TB2	1	1	3P (S1, S2, S3)
24	G	E17 L53 451	INVERTER P.C.BOARD		1		Including heat sink and RT64
	G	E17 L54 451	INVERTER P.C.BOARD			1	
25	G	E12 J52 233	BACK PANEL (OUT)		1	1	
26	G	E12 F28 337	REACTOR		1	1	
27	G	E12 L87 523	CONDENSER NET		1	1	
28	G	E12 F28 515	MOTOR SUPPORT		1	1	
29	G	E12 527 936	CAPILLARY TUBE		1	1	φ4.0 × φ2.4 × 100
	G	E12 838 936	CAPILLARY TUBE		2	3	φ3.0 × φ2.0 × 200
30	G	E12 F28 704	DRAIN SOCKET		1	1	
31	G	E17 B32 351	CAPACITOR ASSY	CX1, CX2		1	

Mr. SLIM

mitsubishi electric corporation

HEAD OFFICE: TOKYO BLDG., 2-7-3, MARUNOUCHI, CHIYODA-KU, TOKYO100-8310, JAPAN

mitsubishi electric consumer products (thailand) co., ltd.

AMATA NAKORN INDUSTRIAL ESTATE

700/406 MOO 7, TAMBON DON HUA ROH,

AMPHUR MUANG, CHONBURI 20000 THAILAND

Made in Thailand

New publication, effective Jan. 2018

Specifications are subject to change without notice.