

INDOOR UNIT PARTS CATALOG

No. OBB788

Models

MSZ-AP25VG - E1, EN1

MSZ-AP35VG - E1, EN1

MSZ-AP42VG - E1, EN1

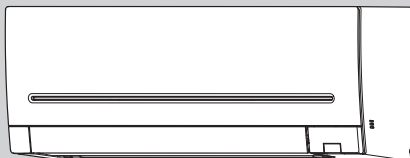
MSZ-AP50VG - E1, EN1

MSZ-AP25VGK - E1, EN1

MSZ-AP35VGK - E1, EN1

MSZ-AP42VGK - E1, EN1

MSZ-AP50VGK - E1, EN1



CONTENTS

1. RoHS PARTS LIST.....	2
2. OPTIONAL PARTS.....	10

SERVICE MANUAL (OBH788)

NOTE:

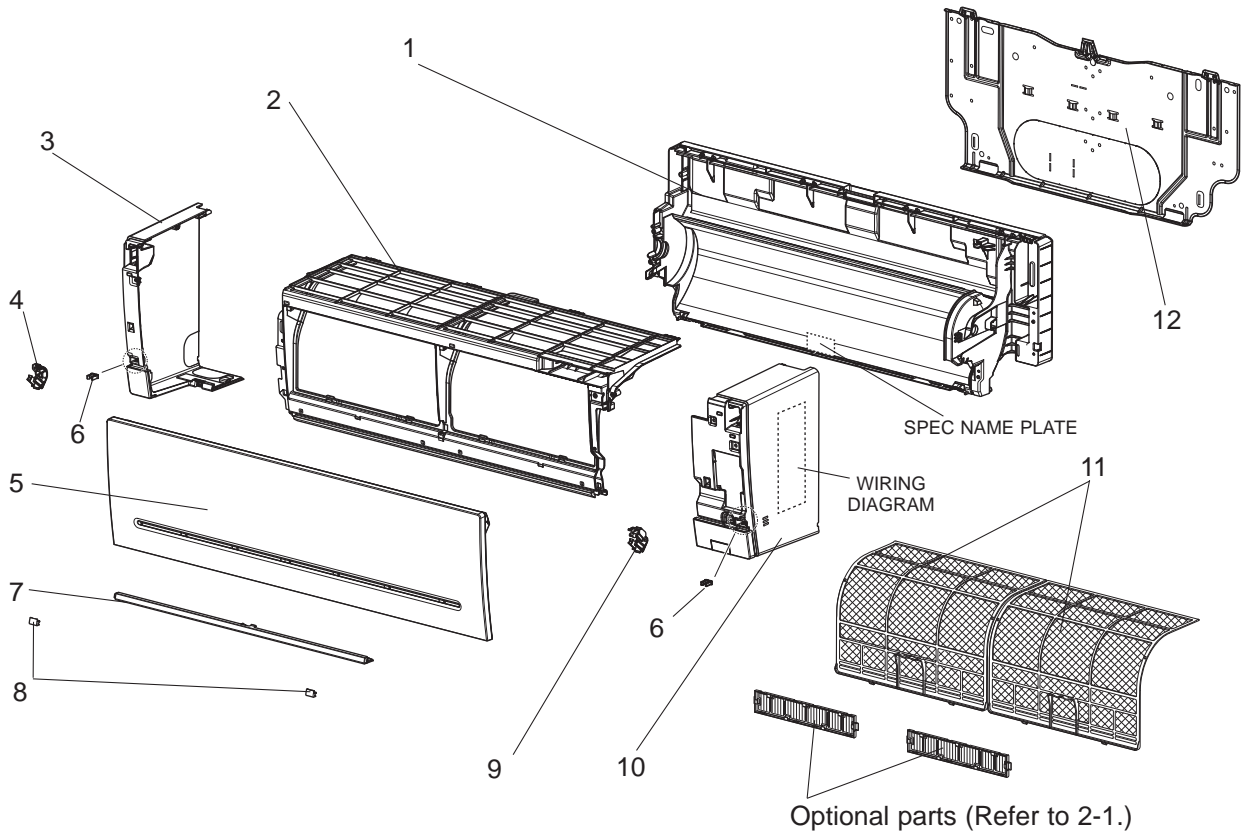
RoHS compliant products have <G> mark on the spec name plate.

1

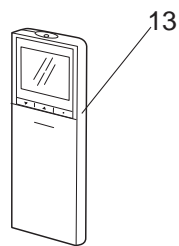
RoHS PARTS LIST

MSZ-AP25VG- E1, EN1 MSZ-AP35VG- E1, EN1
MSZ-AP42VG- E1, EN1 MSZ-AP50VG- E1, EN1

1-1. INDOOR UNIT STRUCTURAL PARTS



1-2. ACCESSORY AND REMOTE CONTROLLER



RoHS PARTS LIST

1-1. INDOOR UNIT STRUCTURAL PARTS

No.	RoHS	Part No.	Part name	Symbol in Wiring Diagram	Q'ty/unit								Remarks
					MSZ-AP								
					25		35		42		50		
					VG -E1	VG -EN1	VG -E1	VG -EN1	VG -E1	VG -EN1	VG -E1	VG -EN1	
1	G	G2W 001 026	BOX ASSEMBLY		1	1	1	1	1	1	1	1	Not including SPEC NAME PLATE
2	G	G2W 001 003	PANEL (FRONT) ASSEMBLY		1	1	1	1	1	1	1	1	
3	G	G2W 001 020	PANEL (LEFT) ASSEMBLY		1	1	1	1	1	1	1	1	Including No. 4,6
4	G	G2W 001 120	ARM HOLDER (LEFT)		1	1	1	1	1	1	1	1	
5	G	G2W 001 010	FRONT PANEL		1	1	1	1	1	1	1	1	
6	G	G2W 001 118	CATCH		2	2	2	2	2	2	2	2	
7	G	G2W 001 006	PANEL (UNDER) ASSEMBLY		1	1	1	1	1	1	1	1	
8	G	G2W 001 023	SCREW CAP		2	2	2	2	2	2	2	2	
9	G	G2W 002 120	ARM HOLDER (RIGHT)		1	1	1	1	1	1	1	1	
10	G	G2W 001 014	PANEL (RIGHT) ASSEMBLY		1	1	1	1	1	1	1	1	Including No. 6,9 Not including WIRING DIAGRAM
11	G	G2W 001 100	AIR FILTER		2	2	2	2	2	2	2	2	1 PC/SET
12	G	G2W 001 115	INSTALLATION PLATE		1	1	1	1	1	1	1	1	

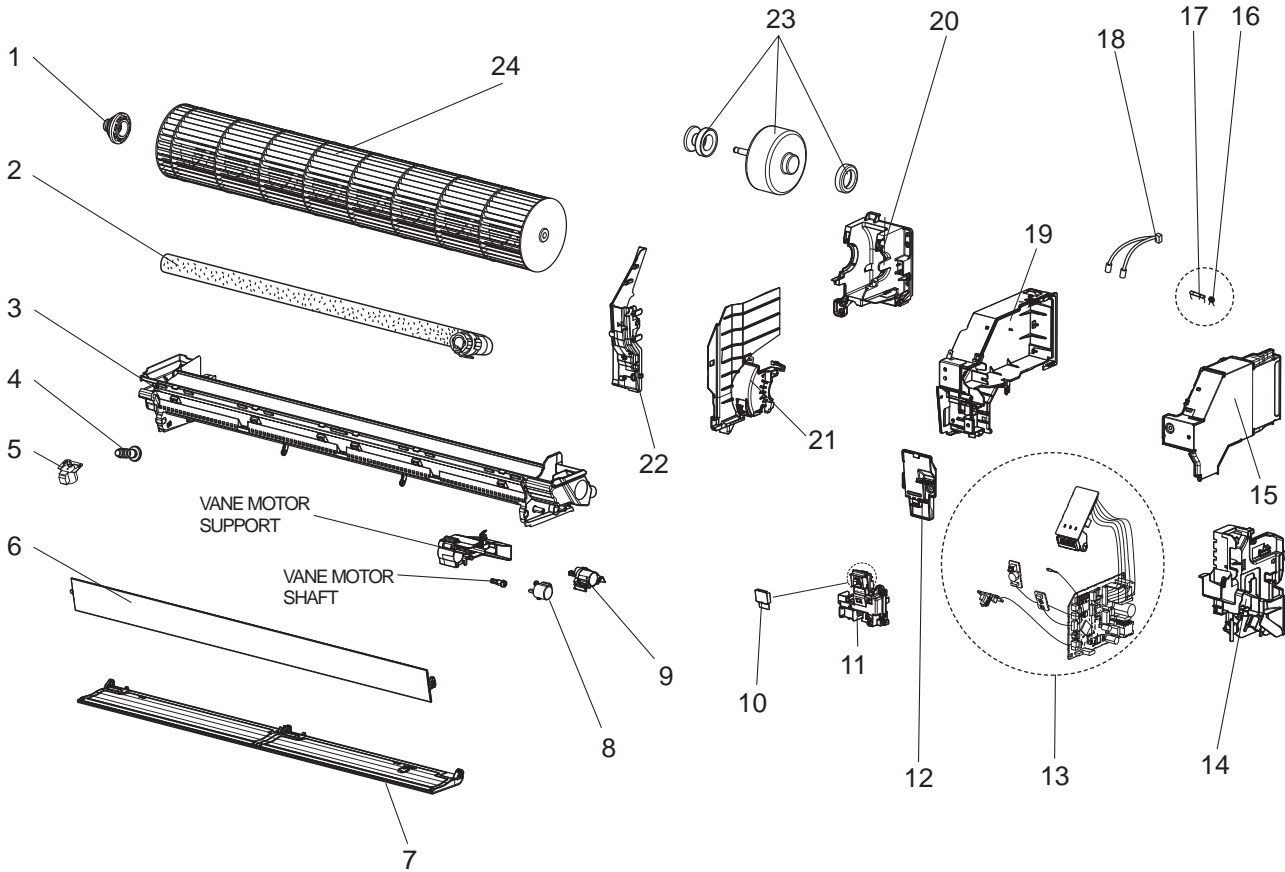
1-2. ACCESSORY AND REMOTE CONTROLLER

No.	RoHS	Part No.	Part name	Symbol in Wiring Diagram	Q'ty/unit								Remarks
					MSZ-AP								
					25		35		42		50		
					VG -E1	VG -EN1	VG -E1	VG -EN1	VG -E1	VG -EN1	VG -E1	VG -EN1	
13	G	G2W 001 400	REMOTE CONTROLLER		1	1	1	1	1	1	1	1	SG17B

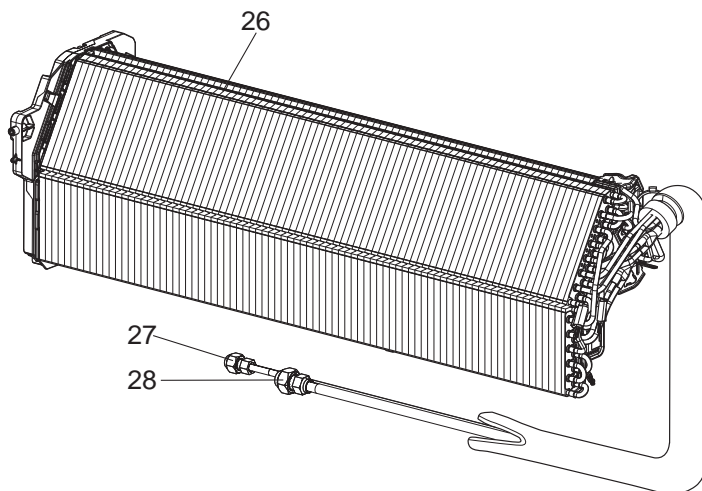
RoHS PARTS LIST

MSZ-AP25VG- E1, EN1 MSZ-AP35VG- E1, EN1
 MSZ-AP42VG- E1, EN1 MSZ-AP50VG- E1, EN1

1-3. INDOOR UNIT ELECTRICAL PARTS AND FUNCTIONAL PARTS



1-4. INDOOR UNIT HEAT EXCHANGER



RoHS PARTS LIST

1-3. INDOOR UNIT ELECTRICAL PARTS AND FUNCTIONAL PARTS

Part number that is circled is not shown in the illustration.

No.	RoHS	Part No.	Part name	Symbol in Wiring Diagram	Q'ty/unit								Remarks
					MSZ-AP								
					25		35		42		50		
VG -E1	VG -EN1	VG -E1	VG -EN1	VG -E1	VG -EN1	VG -E1	VG -EN1	VG -E1	VG -EN1				
1	G	G2W 001 520	BEARING MOUNT ASSEMBLY		1	1	1	1	1	1	1	1	Including sleeve bearing
2	G	G2W 001 110	DRAIN HOSE ASSEMBLY (SHORT)		1		1		1		1		520 mm
	G	G2W 002 110	DRAIN HOSE ASSEMBLY (LONG)			1		1		1		1	670 mm
3	G	G2W 001 030	NOZZLE ASSEMBLY		1	1	1	1	1	1	1	1	
4	G	G2W 001 708	DRAIN CAP		1	1	1	1	1	1	1	1	
5	G	G2W 001 320	VANE MOTOR (VERTICAL)	MV3	1	1	1	1	1	1	1	1	RIGHT & LEFT
6	G	G2W 001 017	HORIZONTAL VANE (UPPER) ASSEMBLY		1	1	1	1	1	1	1	1	Including shaft
7	G	G2W 002 017	HORIZONTAL VANE (LOWER) ASSEMBLY		1	1	1	1	1	1	1	1	Including shaft
8	G	G2W 001 315	VANE MOTOR (HORIZONTAL) (UPPER)	MV1	1	1	1	1	1	1	1	1	UP & DOWN
9	G	G2W 002 315	VANE MOTOR (HORIZONTAL) (LOWER)	MV2	1	1	1	1	1	1	1	1	UP & DOWN
10	G	-	SWITCH SHEET		1	1	1	1	1	1	1	1	DY79D306H01
11	G	-	DISPLAY AND RECEIVER P.C. BOARD HOLDER ASSEMBLY		1	1	1	1	1	1	1	1	DY25A812G02
12	G	-	V.A. CLAMP ASSEMBLY		1	1	1	1	1	1	1	1	DK00G212G01
13	G	G2W 004 410	ELECTRONIC CONTROL P.C. BOARD ※1		1	1							
	G	G2W 003 410					1	1					
	G	G2W 002 410							1	1			
	G	G2W 001 410									1	1	
14	G	-	CABLE GUIDE		1	1	1	1	1	1	1	1	DY25A811G02
15	G	-	PB-COVER (RIGHT)		1	1	1	1	1	1	1	1	DK00G213G01
16	G	G2W 001 425	VARISTOR	NR11	1	1	1	1	1	1	1	1	
17	G	G2W 001 422	FUSE	F11	1	1	1	1	1	1	1	1	T3.15AL250V
18	G	G2W 002 310	INDOOR COIL	RT12 RT13					1	1	1	1	
		G2W 001 310	THERMISTOR		1	1	1	1					
19	G	-	PB-COVER (LEFT)		1	1	1	1	1	1	1	1	DK00G223G02
20	G	-	MOTOR BED		1	1	1	1	1	1	1	1	SQ00C989G03
21	G	G2W 001 103	MOTOR BAND		1	1	1	1	1	1	1	1	
22	G	-	WATER COVER		1	1	1	1	1	1	1	1	SQ25Y723G02
23	G	G2W 001 300	INDOOR FAN MOTOR ※2	MF	1	1	1	1	1	1	1	1	RC0J30□□
24	G	G2W 001 500	LINE FLOW FAN		1	1	1	1	1	1	1	1	
25	G	-	LEAD WIRE ※3		1	1	1	1	1	1	1	1	SM00C948G02

※1 Including RECEIVER P.C. BOARD, DISPLAY P.C. BOARD, SWITCH/BUZZER P.C. BOARD, TERMINAL P.C. BOARD and ROOM TEMPERATURE THERMISTOR (RT11)

※2 Including FAN MOTOR RUBBER MOUNT (2 PCS/SET)

※3 Between CN151 on ELECTRONIC CONTROL P.C. BOARD and VANE MOTOR

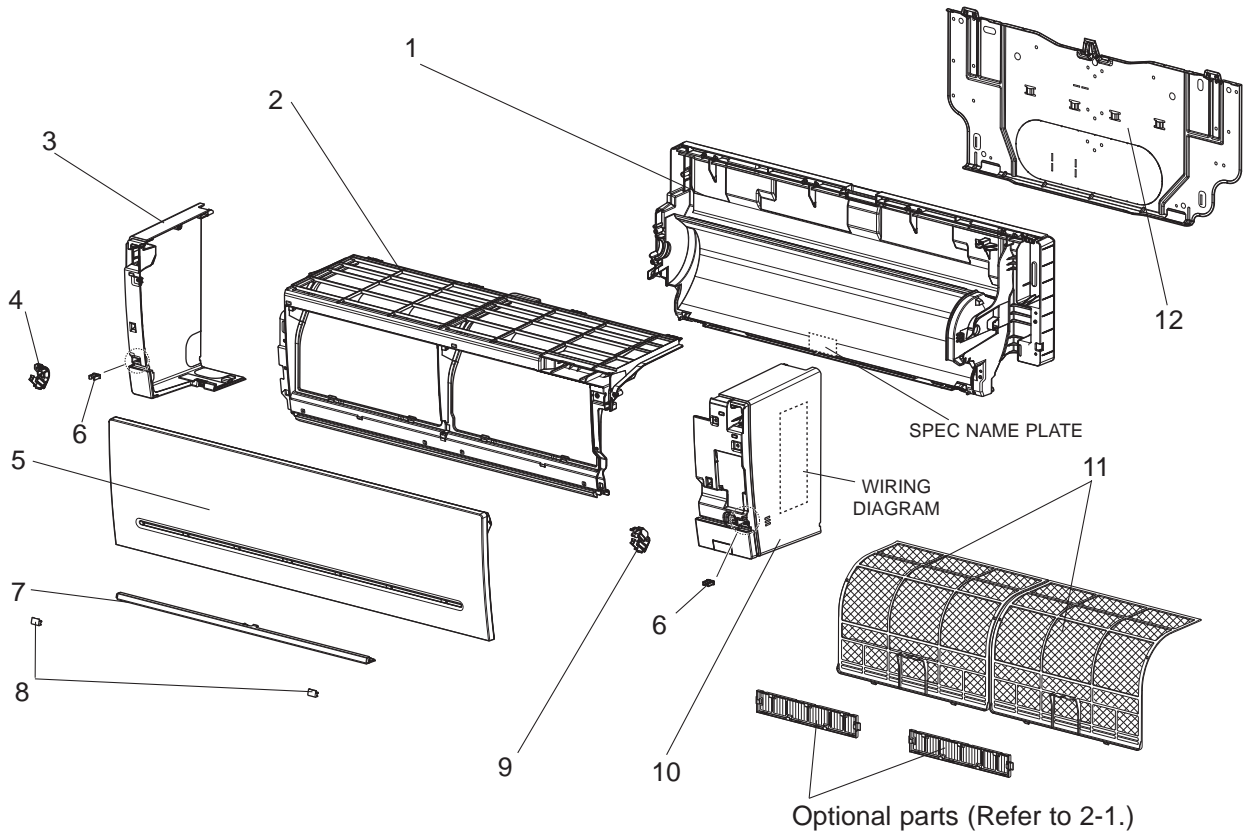
1-4. INDOOR UNIT HEAT EXCHANGER

No.	RoHS	Part No.	Part name	Symbol in Wiring Diagram	Q'ty/unit								Remarks
					MSZ-AP								
					25		35		42		50		
VG -E1	VG -EN1	VG -E1	VG -EN1	VG -E1	VG -EN1	VG -E1	VG -EN1	VG -E1	VG -EN1				
26	G	G2W 001 600	INDOOR HEAT EXCHANGER		1		1						Including No. 27, 28
	G	G2W 002 600					1		1				
	G	G2W 003 600			1		1						
	G	G2W 004 600							1		1		
27	G	G2W 001 605	UNION (LIQUID)		1	1	1	1	1	1	1	1	ø6.35
28	G	G2W 002 605	UNION (GAS)		1	1	1	1	1	1	1	1	ø9.52

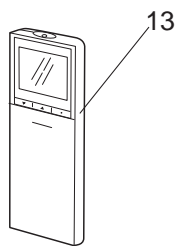
RoHS PARTS LIST

MSZ-AP25VGK- E1, EN1 MSZ-AP35VGK- E1, EN1
MSZ-AP42VGK- E1, EN1 MSZ-AP50VGK- E1, EN1

1-5. INDOOR UNIT STRUCTURAL PARTS



1-6. ACCESSORY AND REMOTE CONTROLLER



RoHS PARTS LIST

1-5. INDOOR UNIT STRUCTURAL PARTS

No.	RoHS	Part No.	Part name	Symbol in Wiring Diagram	Q'ty/unit								Remarks
					MSZ-AP								
					25		35		42		50		
VGK -E1	VGK -EN1	VGK -E1	VGK -EN1	VGK -E1	VGK -EN1	VGK -E1	VGK -EN1						
1	G	G2W 001 026	BOX ASSEMBLY		1	1	1	1	1	1	1	1	Not including SPEC NAME PLATE
2	G	G2W 001 003	PANEL (FRONT) ASSEMBLY		1	1	1	1	1	1	1	1	
3	G	G2W 001 020	PANEL (LEFT) ASSEMBLY		1	1	1	1	1	1	1	1	Including No. 4,6
4	G	G2W 001 120	ARM HOLDER (LEFT)		1	1	1	1	1	1	1	1	
5	G	G2W 001 010	FRONT PANEL		1	1	1	1	1	1	1	1	
6	G	G2W 001 118	CATCH		2	2	2	2	2	2	2	2	
7	G	G2W 001 006	PANEL (UNDER) ASSEMBLY		1	1	1	1	1	1	1	1	
8	G	G2W 001 023	SCREW CAP		2	2	2	2	2	2	2	2	
9	G	G2W 002 120	ARM HOLDER (RIGHT)		1	1	1	1	1	1	1	1	
10	G	G2W 001 014	PANEL (RIGHT) ASSEMBLY		1	1	1	1	1	1	1	1	Including No. 6,9 Not including WIRING DIAGRAM
11	G	G2W 001 100	AIR FILTER		2	2	2	2	2	2	2	2	1 PC/SET
12	G	G2W 001 115	INSTALLATION PLATE		1	1	1	1	1	1	1	1	

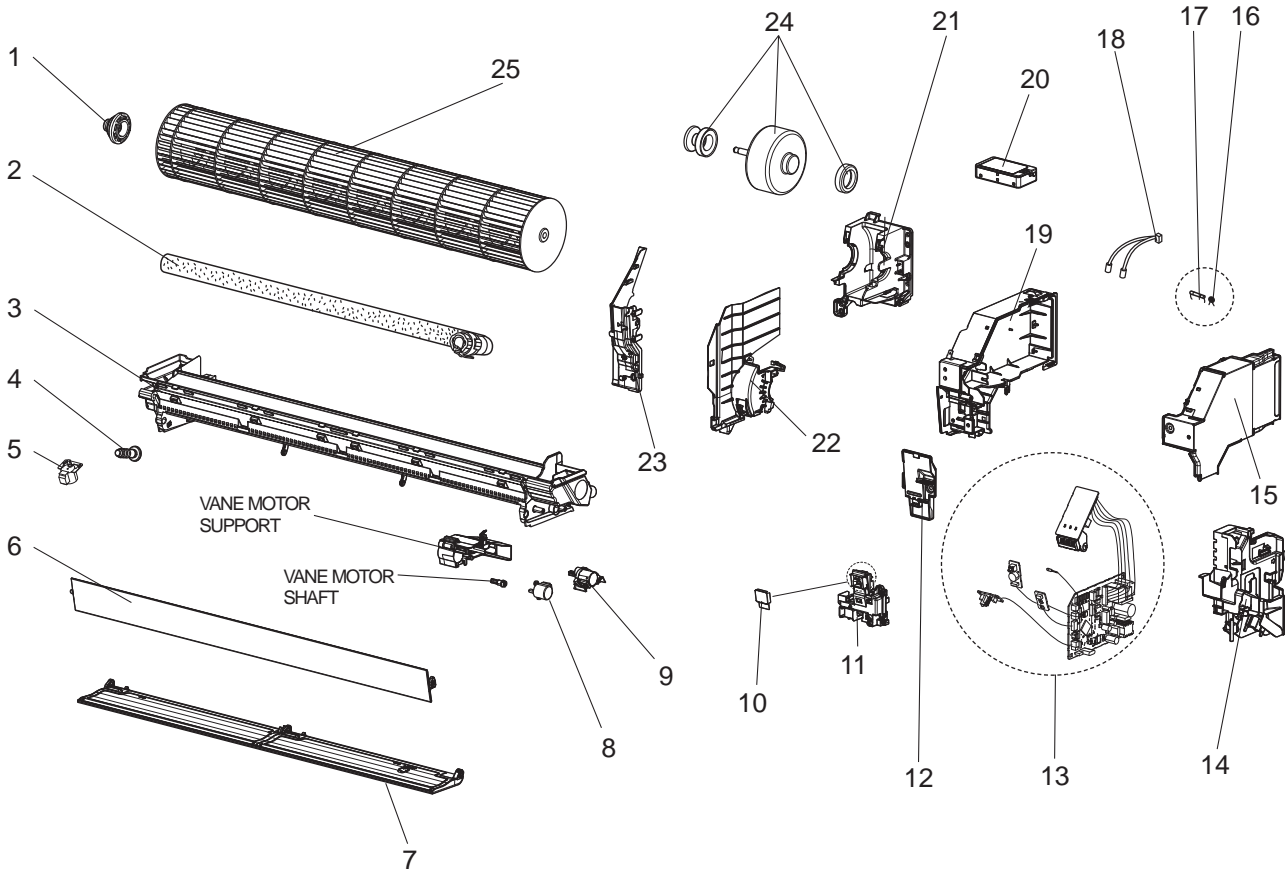
1-6. ACCESSORY AND REMOTE CONTROLLER

No.	RoHS	Part No.	Part name	Symbol in Wiring Diagram	Q'ty/unit								Remarks
					MSZ-AP								
					25		35		42		50		
VGK -E1	VGK -EN1	VGK -E1	VGK -EN1	VGK -E1	VGK -EN1	VGK -E1	VGK -EN1						
13	G	G2W 001 400	REMOTE CONTROLLER		1	1	1	1	1	1	1	1	SG17B

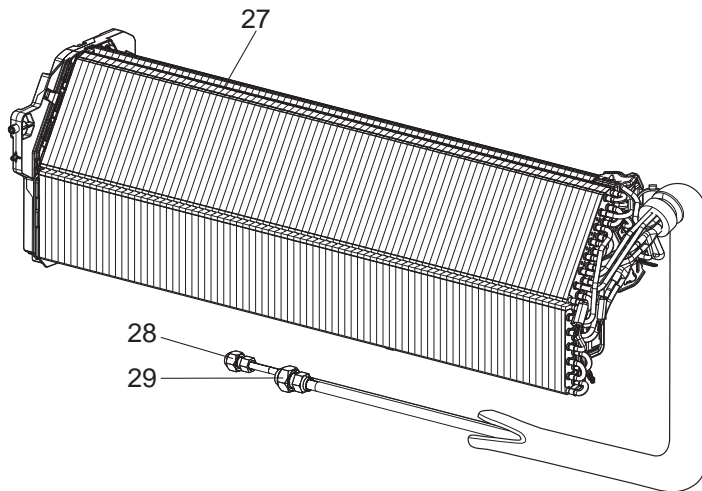
RoHS PARTS LIST

MSZ-AP25VGK- E1, EN1 MSZ-AP35VGK- E1, EN1
MSZ-AP42VGK- E1, EN1 MSZ-AP50VGK- E1, EN1

1-7. INDOOR UNIT ELECTRICAL PARTS AND FUNCTIONAL PARTS



1-8. INDOOR UNIT HEAT EXCHANGER



RoHS PARTS LIST

1-7. INDOOR UNIT ELECTRICAL PARTS AND FUNCTIONAL PARTS

Part number that is circled is not shown in the illustration.

No.	RoHS	Part No.	Part name	Symbol in Wiring Diagram	Q'ty/unit								Remarks	
					MSZ-AP									
					25		35		42		50			
VGK -E1	VGK -EN1	VGK -E1	VGK -EN1	VGK -E1	VGK -EN1	VGK -E1	VGK -EN1	VGK -E1	VGK -EN1					
1	G	G2W 001 520	BEARING MOUNT ASSEMBLY		1	1	1	1	1	1	1	1	1	Including sleeve bearing
2	G	G2W 001 110	DRAIN HOSE ASSEMBLY (SHORT)		1		1		1		1			520 mm
	G	G2W 002 110	DRAIN HOSE ASSEMBLY (LONG)			1		1		1			1	670 mm
3	G	G2W 001 030	NOZZLE ASSEMBLY		1	1	1	1	1	1	1	1	1	
4	G	G2W 001 708	DRAIN CAP		1	1	1	1	1	1	1	1	1	
5	G	G2W 001 320	VANE MOTOR (VERTICAL)	MV3	1	1	1	1	1	1	1	1	1	RIGHT & LEFT
6	G	G2W 001 017	HORIZONTAL VANE (UPPER) ASSEMBLY		1	1	1	1	1	1	1	1	1	Including shaft
7	G	G2W 002 017	HORIZONTAL VANE (LOWER) ASSEMBLY		1	1	1	1	1	1	1	1	1	Including shaft
8	G	G2W 001 315	VANE MOTOR (HORIZONTAL) (UPPER)	MV1	1	1	1	1	1	1	1	1	1	UP & DOWN
9	G	G2W 002 315	VANE MOTOR (HORIZONTAL) (LOWER)	MV2	1	1	1	1	1	1	1	1	1	UP & DOWN
10	G	-	SWITCH SHEET		1	1	1	1	1	1	1	1	1	DY79D306H01
11	G	-	DISPLAY AND RECEIVER P.C. BOARD HOLDER ASSEMBLY		1	1	1	1	1	1	1	1	1	DY25A812G02
12	G	-	V.A. CLAMP ASSEMBLY		1	1	1	1	1	1	1	1	1	DK00G212G01
13	G	G2W 004 410	ELECTRONIC CONTROL P.C. BOARD ※1		1	1								
	G	G2W 003 410					1	1						
	G	G2W 002 410							1	1				
	G	G2W 001 410									1	1		
14	G	-	CABLE GUIDE		1	1	1	1	1	1	1	1	1	DY25A811G02
15	G	-	PB-COVER (RIGHT)		1	1	1	1	1	1	1	1	1	DK00G213G01
16	G	G2W 001 425	VARISTOR	NR11	1	1	1	1	1	1	1	1	1	
17	G	G2W 001 422	FUSE	F11	1	1	1	1	1	1	1	1	1	T3.15AL250V
18	G	G2W 002 310	INDOOR COIL	RT12 RT13					1	1	1	1		
		G2W 001 310	THERMISTOR		1	1	1	1						
19	G	-	PB-COVER (LEFT)		1	1	1	1	1	1	1	1	1	DK00G223G02
20	G	G2W 001 405	Wi-Fi INTERFACE MAC-566IFB-E		1	1	1	1	1	1	1	1	1	MAC-566IFB-E
21	G	-	MOTOR BED		1	1	1	1	1	1	1	1	1	SQ00C989G03
22	G	G2W 001 103	MOTOR BAND		1	1	1	1	1	1	1	1	1	
23	G	-	WATER COVER		1	1	1	1	1	1	1	1	1	SQ25Y723G02
24	G	G2W 001 300	INDOOR FAN MOTOR ※2	MF	1	1	1	1	1	1	1	1	1	RC0J30□□
25	G	G2W 001 500	LINE FLOW FAN		1	1	1	1	1	1	1	1	1	
26	G	-	LEAD WIRE ※3		1	1	1	1	1	1	1	1	1	SM00C948G02

※1 Including RECEIVER P.C. BOARD, DISPLAY P.C. BOARD, SWITCH/BUZZER P.C. BOARD, TERMINAL P.C. BOARD and ROOM TEMPERATURE THERMISTOR (RT11)

※2 Including FAN MOTOR RUBBER MOUNT (2 PCS/SET)

※3 Between CN151 on ELECTRONIC CONTROL P.C. BOARD and VANE MOTOR

1-8. INDOOR UNIT HEAT EXCHANGER

No.	RoHS	Part No.	Part name	Symbol in Wiring Diagram	Q'ty/unit								Remarks	
					MSZ-AP									
					25		35		42		50			
VGK -E1	VGK -EN1	VGK -E1	VGK -EN1	VGK -E1	VGK -EN1	VGK -E1	VGK -EN1	VGK -E1	VGK -EN1					
27	G	G2W 001 600	INDOOR HEAT EXCHANGER		1		1							Including No.28,29
	G	G2W 002 600					1		1					
	G	G2W 003 600			1		1							
	G	G2W 004 600							1		1			
28	G	G2W 001 605	UNION (LIQUID)		1	1	1	1	1	1	1	1	1	ø6.35
29	G	G2W 002 605	UNION (GAS)		1	1	1	1	1	1	1	1	1	ø9.52

2-1. AIR CLEANING FILTER (SILVER-IONIZED AIR PURIFIER FILTER)

Every 3 months:

- Remove dirt by a vacuum cleaner.

When dirt cannot be removed by vacuum cleaning:

- Soak the filter and its frame in lukewarm water before rinsing it.
- After washing, dry it well in shade. Install all tabs of the air filter.

Every year:

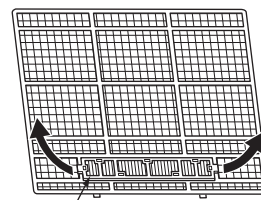
- Replace it with a new air cleaning filter for best performance.

NOTE 1: Clean the filters regularly for best performance and to reduce power consumption.

NOTE 2: Dirty filters cause condensation in the air conditioner which will contribute to the growth of fungi such as mold. It is therefore recommended to clean air filters every 2 weeks.

Model	Part No.
MSZ-AP25VG	MAC-2370FT-E
MSZ-AP35VG	
MSZ-AP42VG	
MSZ-AP50VG	
MSZ-AP25VGK	
MSZ-AP35VGK	
MSZ-AP42VGK	
MSZ-AP50VGK	

Pull to remove from the air filter



Air cleaning filter
(Silver-ionized air purifier filter)

MITSUBISHI ELECTRIC CORPORATION

HEAD OFFICE: TOKYO BUILDING, 2-7-3, MARUNOUCHI, CHIYODA-KU, TOKYO 100-8310, JAPAN

© Copyright 2017 MITSUBISHI ELECTRIC CORPORATION

Published: Dec. 2017. No. OBB788

Made in Japan

Specifications are subject to change without notice.