

OUTDOOR UNIT

No. OBB789

PARTS CATALOG

Models

MUZ-AP25VG - E1, ET1

MUZ-AP35VG - E1, ET1

MUZ-AP42VG - E1, ET1

MUZ-AP50VG - E1, ET1

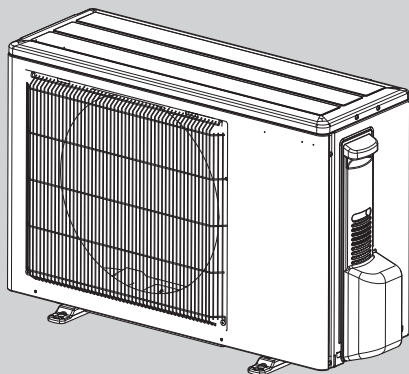
MUZ-AP25VGH - E1

MUZ-AP35VGH - E1

MUZ-AP42VGH - E1

MUZ-AP50VGH - E1

MUZ-AP25VG MUZ-AP25VGH
 MUZ-AP35VG MUZ-AP35VGH
 MUZ-AP42VG MUZ-AP42VGH



CONTENTS

1. RoHS PARTS LIST..... 2

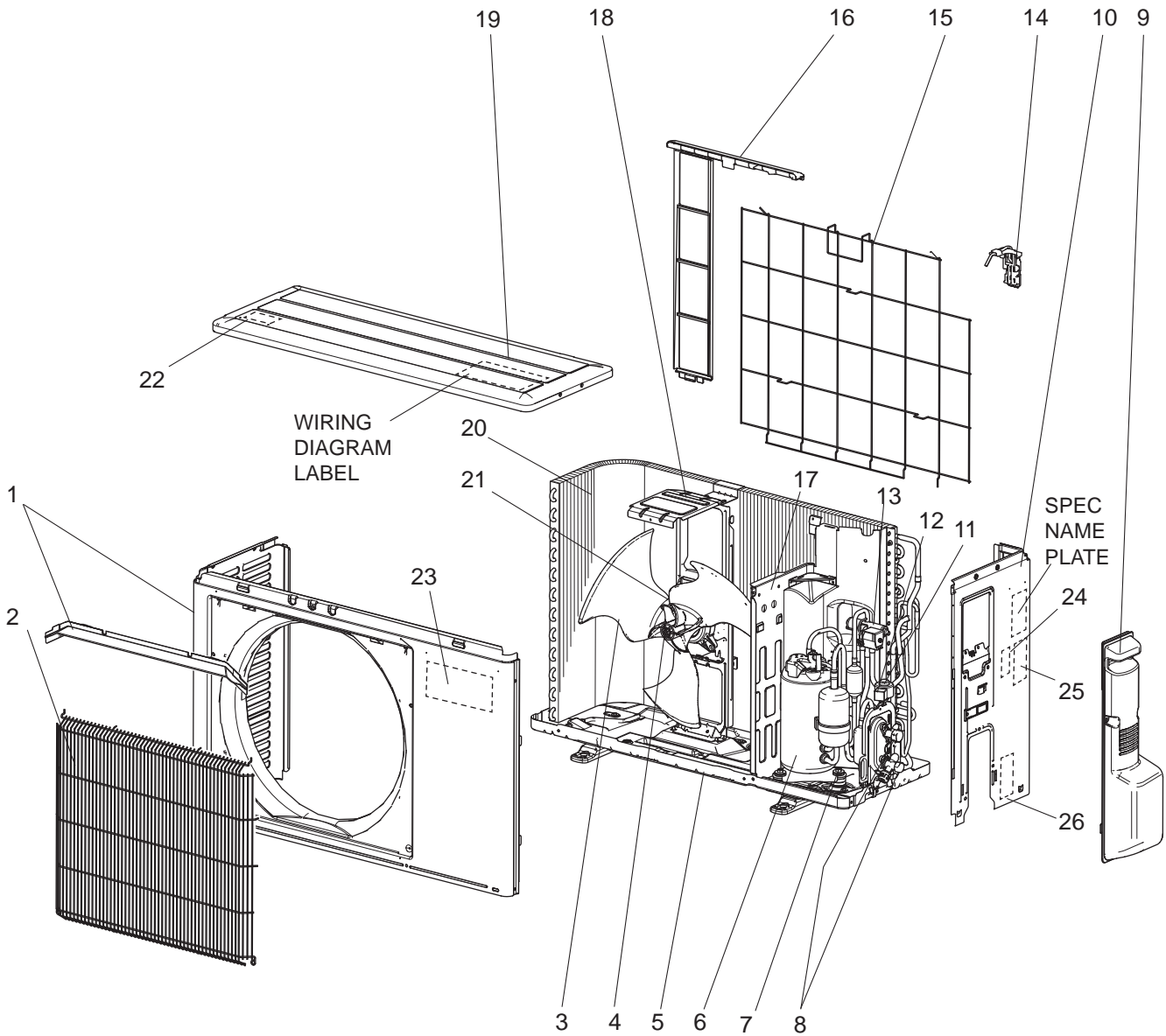
SERVICE MANUAL (OBH789)

NOTE:

RoHS compliant products have <G> mark on the spec name plate.

MUZ-AP25VG MUZ-AP35VG

1-1. OUTDOOR UNIT STRUCTURAL PARTS AND FUNCTIONAL PARTS



RoHS PARTS LIST

1-1. OUTDOOR UNIT STRUCTURAL PARTS AND FUNCTIONAL PARTS

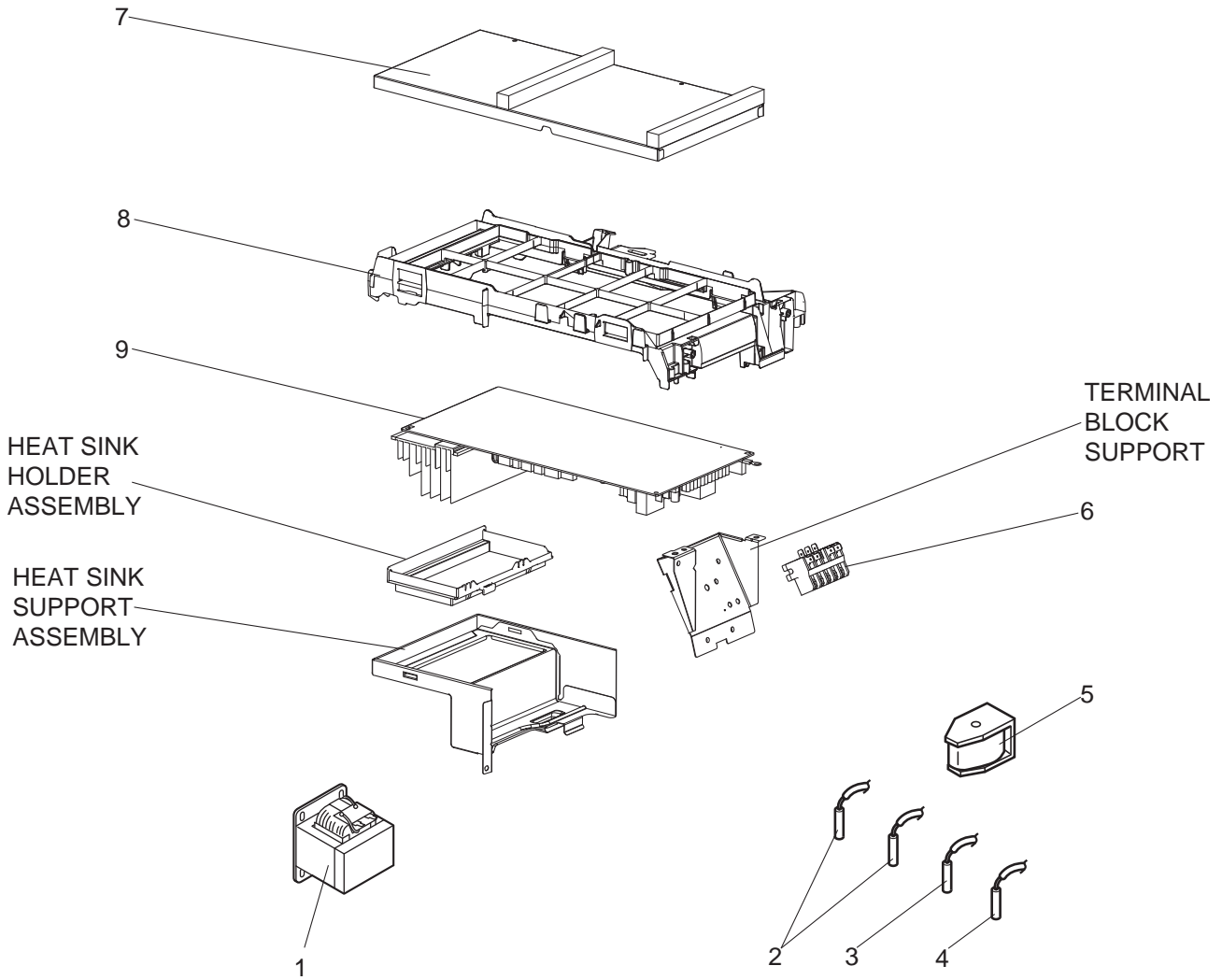
Part numbers that are circled are not shown in the illustration.

No.	RoHS	Part No.	Part Name	Symbol in Wiring Diagram	Q'ty/unit				Remarks
					MUZ-AP				
					25VG-		35VG-		
					E1	E1	E1	E1	
1	G	G2W 001 050	CABINET		1	1	1	1	Including ice guard, Not including No. 23
2	G	G2W 001 063	WIRE GRILLE		1	1	1	1	
3	G	G2W 001 550	PROPELLER FAN		1	1	1	1	
4	G	G2W 001 753	PROPELLER FAN NUT		1	1	1	1	
5	G	G2W 001 055	BASE ASSEMBLY		1	1	1	1	
6	G	G2W 001 650	COMPRESSOR	MC	1	1	1	1	KVB073FYXMC
7	G	G2W 001 773	COMPRESSOR RUBBER SET		3	3	3	3	3 RUBBERS/SET
8	G	G2W 001 655	STOP VALVE ASSEMBLY		1	1	1	1	Gas: ø9.52 Liq: ø6.35 Including pipes
9	G	G2W 001 053	SERVICE PANEL ASSEMBLY		1	1	1	1	
10	G	G2W 001 060	BACK PANEL ASSEMBLY		1	1	1	1	Not including SPEC NAME PLATE or No. 24 to 26
11	G	G2W 001 668	EXPANSION VALVE ASSEMBLY		1	1	1	1	Including capillary tube ø4.0xø2.4x240
12	G	G2W 001 362	EXPANSION VALVE COIL	LEV	1	1	1	1	
13	G	G2W 001 665	4-WAY VALVE		1	1	1	1	
14	G	————	THERMO HOLDER (AMBIENT)		1	1	1	1	DK25A972G03
15	G	G2W 001 067	CONDENSER WIRE NET ASSEMBLY		1	1	1	1	
16	G	G2W 002 065	CONDENSER NET		1	1	1	1	
17	G	G2W 001 150	SEPARATOR		1	1	1	1	
18	G	G2W 001 154	MOTOR SUPPORT		1	1	1	1	
19	G	G2W 001 057	TOP PANEL ASSEMBLY		1	1	1	1	Not including WIRING DIAGRAM LABEL or No. 22
20	G	G2W 001 660	OUTDOOR HEAT EXCHANGER		1	1	1	1	
21	G	G2W 001 350	OUTDOOR FAN MOTOR	MF	1	1	1	1	RC0J50-□□
22	G	————	LABEL		1	1	1	1	JG79R840H01
23	G	————	TRADE MARK		1	1	1	1	DK79G220H01
24	G	————	LABEL		1	1	1	1	JG79B901H01
25	G	————	LABEL		1	1	1	1	JG79R837H01
26	G	————	LABEL		1	1	1	1	DG79T472H01
⑳	G	G2W 001 371	COMPRESSOR LEAD WIRE ASSEMBLY		1	1	1	1	
㉑	G	G2W 001 765	DRAIN SOCKET		1	1	1	1	

RoHS PARTS LIST

MUZ-AP25VG MUZ-AP35VG

1-2. OUTDOOR UNIT ELECTRICAL PARTS



RoHS PARTS LIST

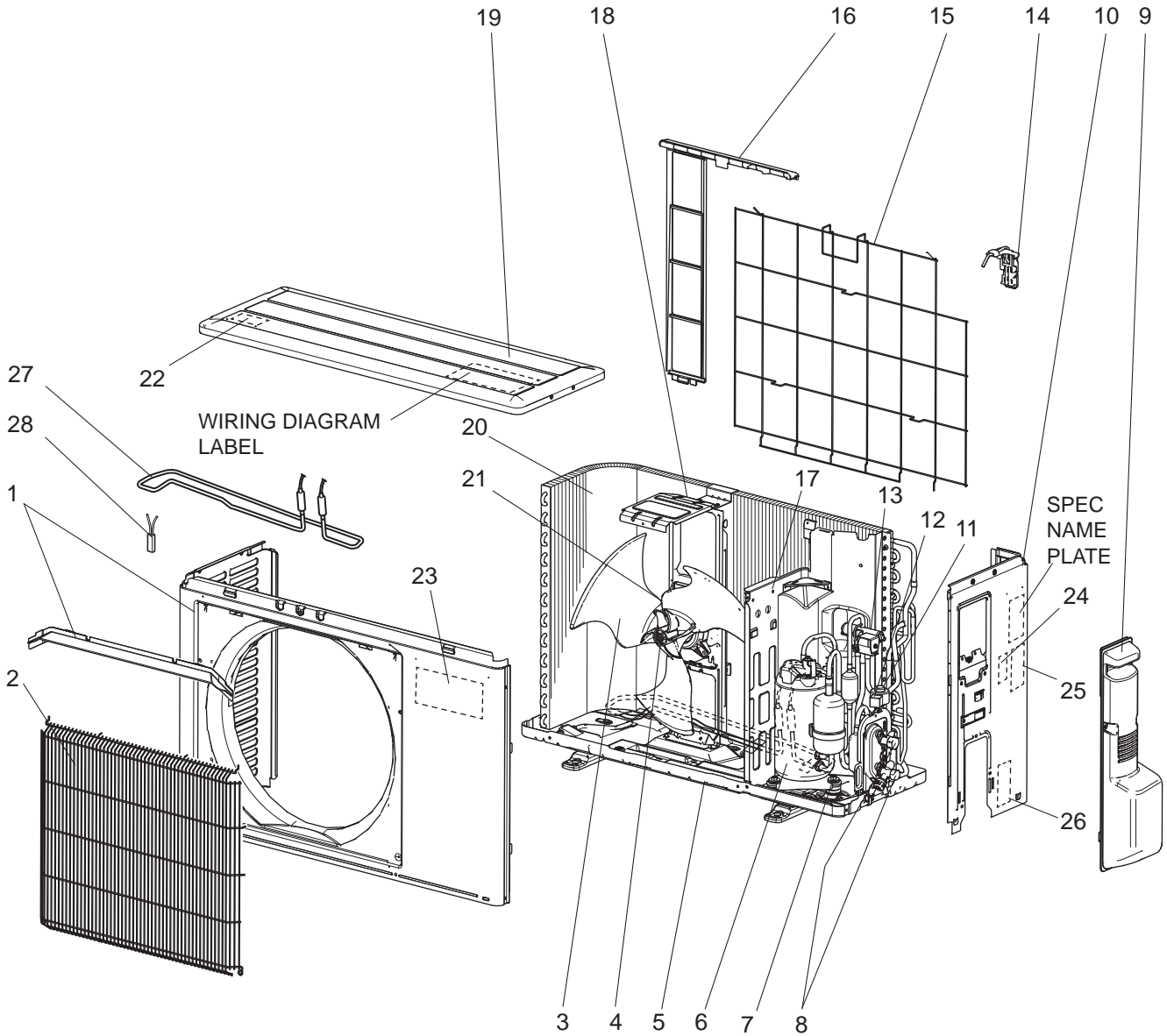
1-2. OUTDOOR UNIT ELECTRICAL PARTS

No.	RoHS	Part No.	Part Name	Symbol in Wiring Diagram	Q'ty/unit				Remarks
					MUZ-AP				
					25VG-		35VG-		
					[E1]	[E1]	[E1]	[E1]	
1	G	G2W 001 359	REACTOR	L61	1	1			
	G	G2W 002 359					1	1	
2	G	G2W 001 353	THERMISTOR SET	RT61, RT62	1	1	1	1	DEFROST, DISCHARGE
3	G	G2W 001 355	AMBIENT TEMPERATURE THERMISTOR	RT65	1	1	1	1	
4	G	G2W 001 357	OUTDOOR HEAT EXCHANGER TEMPERATURE THERMISTOR	RT68	1	1	1	1	
5	G	G2W 001 365	R.V. COIL ASSEMBLY	21S4	1	1	1	1	
6	G	G2W 001 373	TERMINAL BLOCK	TB1	1	1	1	1	5P (S1, S2, S3, L, N)
7	G	_____	P.C. BOARD COVER		1	1	1	1	DY02B869G01, SQ33C889H05 (2 PCS)
8	G	_____	P.C. BOARD SUPPORT		1	1	1	1	DY25A804G02
9	G	G2W 006 460	INVERTER P.C. BOARD ASSEMBLY		1	1			
	G	G2W 005 460					1	1	

RoHS PARTS LIST

MUZ-AP25VGH MUZ-AP35VGH

1-3. OUTDOOR UNIT STRUCTURAL PARTS AND FUNCTIONAL PARTS



RoHS PARTS LIST

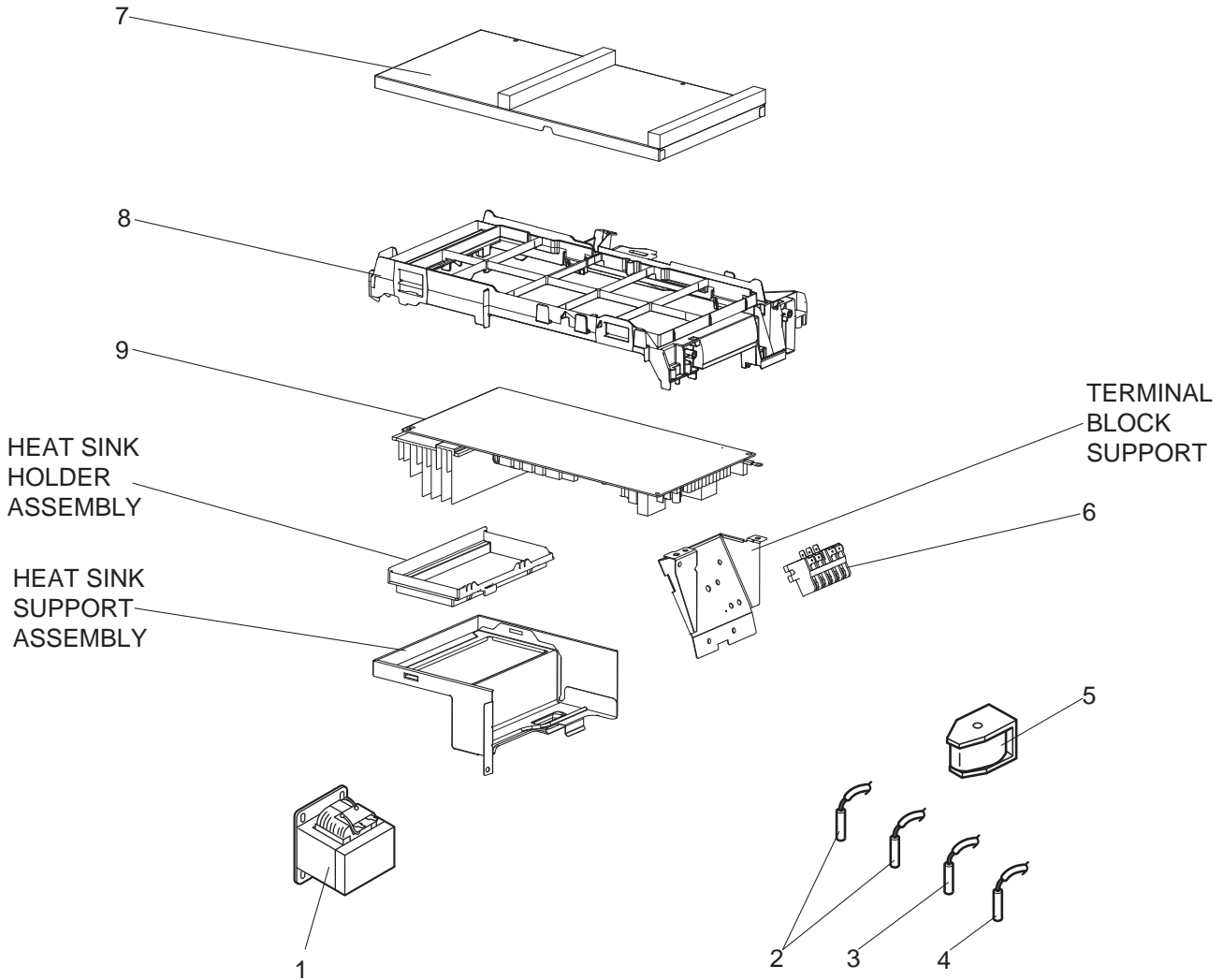
1-3. OUTDOOR UNIT STRUCTURAL PARTS AND FUNCTIONAL PARTS

Part number that is circled is not shown in the illustration.

No.	RoHS	Part No.	Part Name	Symbol in Wiring Diagram	Q'ty/unit		Remarks
					MUZ-AP		
					25VGH- [E1]	35VGH- [E1]	
1	G	G2W 001 050	CABINET		1	1	Including ice guard, Not including No. 23
2	G	G2W 001 063	WIRE GRILLE		1	1	
3	G	G2W 001 550	PROPELLER FAN		1	1	
4	G	G2W 001 753	PROPELLER FAN NUT		1	1	
5	G	G2W 002 055	BASE ASSEMBLY		1	1	
6	G	G2W 001 650	COMPRESSOR	MC	1	1	KVB073FYXMC
7	G	G2W 001 773	COMPRESSOR RUBBER SET		3	3	3 RUBBERS/SET
8	G	G2W 001 655	STOP VALVE ASSEMBLY		1	1	Gas: ø9.52 Liq: ø6.35 Including pipes
9	G	G2W 001 053	SERVICE PANEL ASSEMBLY		1	1	
10	G	G2W 001 060	BACK PANEL ASSEMBLY		1	1	Not including SPEC NAME PLATE or No. 24 to 26
11	G	G2W 001 668	EXPANSION VALVE ASSEMBLY		1	1	Including capillary tube ø4.0xø2.4x240
12	G	G2W 001 362	EXPANSION VALVE COIL	LEV	1	1	
13	G	G2W 001 665	4-WAY VALVE		1	1	
14	G	————	THERMO HOLDER (AMBIENT)		1	1	DK25A972G03
15	G	G2W 001 067	CONDENSER WIRE NET ASSEMBLY		1	1	
16	G	G2W 002 065	CONDENSER NET		1	1	
17	G	G2W 002 150	SEPARATOR		1	1	
18	G	G2W 001 154	MOTOR SUPPORT		1	1	
19	G	G2W 001 057	TOP PANEL ASSEMBLY		1	1	Not including WIRING DIAGRAM LABEL or No. 22
20	G	G2W 001 660	OUTDOOR HEAT EXCHANGER		1	1	
21	G	G2W 001 350	OUTDOOR FAN MOTOR	MF	1	1	RC0J50-□□
22	G	————	LABEL		1	1	JG79R840H01
23	G	————	TRADE MARK		1	1	DK79G220H01
24	G	————	LABEL		1	1	JG79B901H01
25	G	————	LABEL		1	1	JG79R837H01
26	G	————	LABEL		1	1	DG79T472H01
27	G	G2W 001 368	DEFROST HEATER	H	1	1	
28	G	G2W 001 377	HEATER PROTECTOR ASSEMBLY	26H	1	1	
②9	G	G2W 001 371	COMPRESSOR LEAD WIRE ASSEMBLY		1	1	

RoHS PARTS LIST

MUZ-AP25VGH MUZ-AP35VGH 1-4. OUTDOOR UNIT ELECTRICAL PARTS



RoHS PARTS LIST

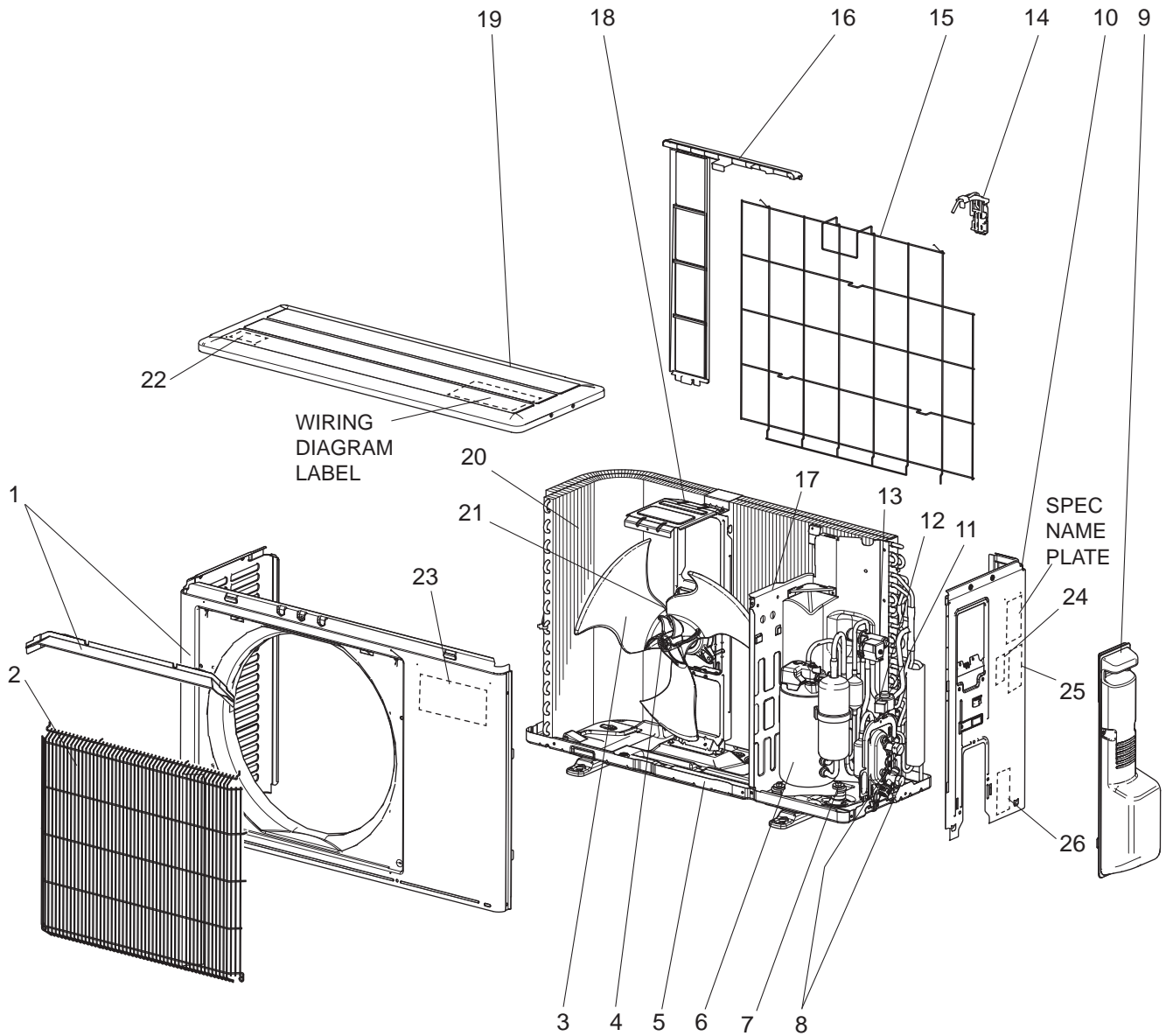
1-4. OUTDOOR UNIT ELECTRICAL PARTS

No.	RoHS	Part No.	Part Name	Symbol in Wiring Diagram	Q'ty/unit		Remarks
					MUZ-AP		
					25VGH-	35VGH-	
1	G	G2W 001 359	REACTOR	L61	E1		
	G	G2W 002 359				E1	
2	G	G2W 001 353	THERMISTOR SET	RT61, RT62	1	1	DEFROST, DISCHARGE
3	G	G2W 001 355	AMBIENT TEMPERATURE THERMISTOR	RT65	1	1	
4	G	G2W 001 357	OUTDOOR HEAT EXCHANGER TEMPERATURE THERMISTOR	RT68	1	1	
5	G	G2W 001 365	R.V. COIL ASSEMBLY	21S4	1	1	
6	G	G2W 001 373	TERMINAL BLOCK	TB1	1	1	5P (S1, S2, S3, L, N)
7	G	_____	P.C. BOARD COVER		1	1	DY02B869G01, SQ33C889H05 (2 PCS)
8	G	_____	P.C. BOARD SUPPORT		1	1	DY25A804G02
9	G	G2W 003 460	INVERTER P.C. BOARD ASSEMBLY		1		
	G	G2W 002 460				E1	

RoHS PARTS LIST

MUZ-AP42VG

1-5. OUTDOOR UNIT STRUCTURAL PARTS AND FUNCTIONAL PARTS



RoHS PARTS LIST

1-5. OUTDOOR UNIT STRUCTURAL PARTS AND FUNCTIONAL PARTS

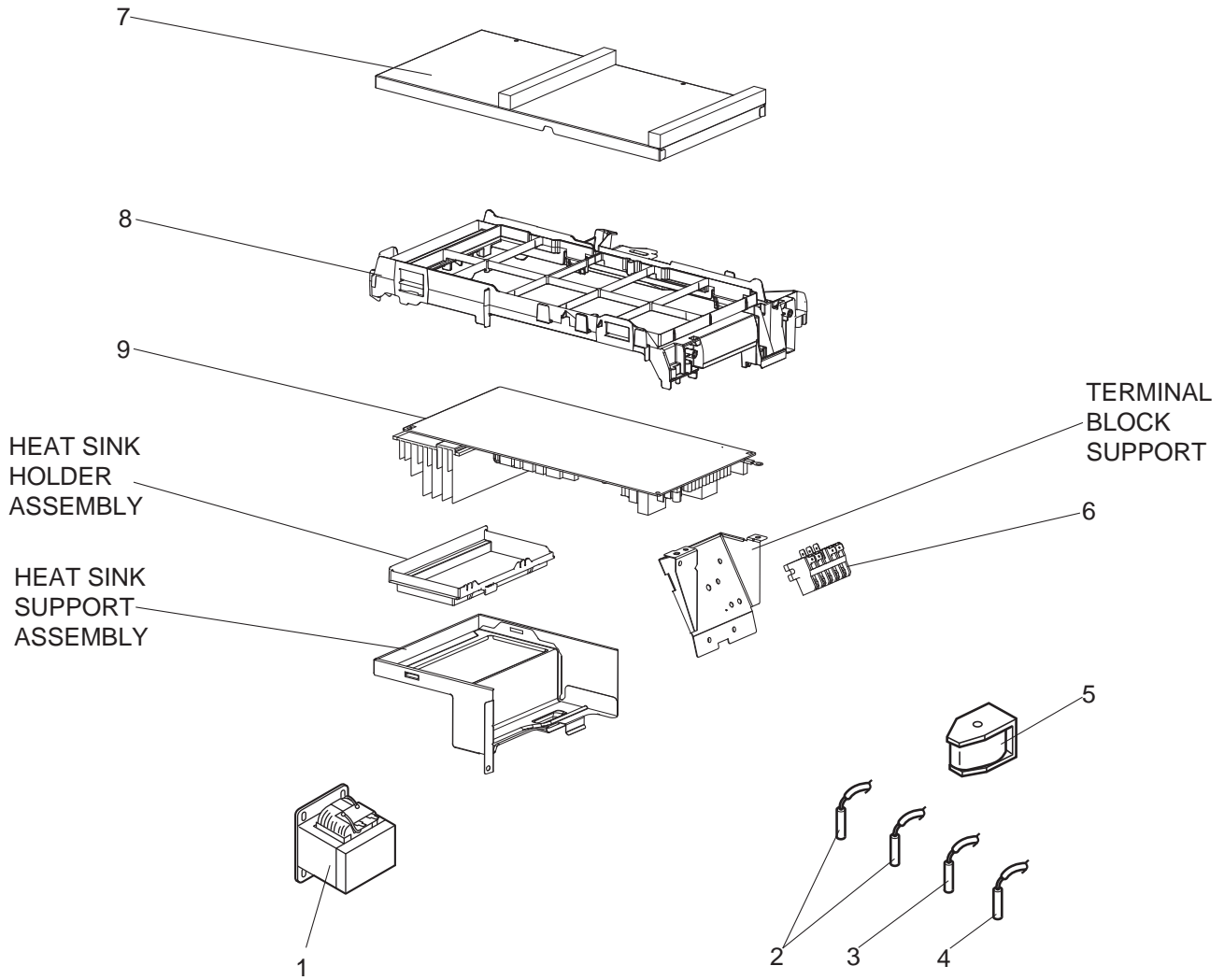
Part numbers that are circled are not shown in the illustration.

No.	RoHS	Part No.	Part Name	Symbol in Wiring Diagram	Q'ty/unit		Remarks
					MUZ-AP		
					42VG-		
					E1	E1	
1	G	G2W 001 050	CABINET		1	1	Including ice guard, Not including No. 23
2	G	G2W 001 063	WIRE GRILLE		1	1	
3	G	G2W 001 550	PROPELLER FAN		1	1	
4	G	G2W 001 753	PROPELLER FAN NUT		1	1	
5	G	G2W 001 055	BASE ASSEMBLY		1	1	
6	G	G2W 002 650	COMPRESSOR	MC	1	1	SVB130FBBMC
7	G	G2W 002 773	COMPRESSOR RUBBER SET		3	3	3 RUBBERS/SET
8	G	G2W 001 655	STOP VALVE ASSEMBLY		1	1	Gas: ø9.52 Liq: ø6.35 Including pipes
9	G	G2W 001 053	SERVICE PANEL ASSEMBLY		1	1	
10	G	G2W 001 060	BACK PANEL ASSEMBLY		1	1	Not including SPEC NAME PLATE or No. 24 to 26
11	G	G2W 001 668	EXPANSION VALVE ASSEMBLY		1	1	Including capillary tube ø4.0xø2.4x240
12	G	G2W 001 362	EXPANSION VALVE COIL	LEV	1	1	
13	G	G2W 001 665	4-WAY VALVE		1	1	
14	G	————	THERMO HOLDER (AMBIENT)		1	1	DK25A972G04
15	G	G2W 002 067	CONDENSER WIRE NET ASSEMBLY		1	1	
16	G	G2W 001 065	CONDENSER NET		1	1	
17	G	G2W 003 150	SEPARATOR		1	1	
18	G	G2W 002 154	MOTOR SUPPORT		1	1	
19	G	G2W 001 057	TOP PANEL ASSEMBLY		1	1	Not including WIRING DIAGRAM LABEL or No. 22
20	G	G2W 002 660	OUTDOOR HEAT EXCHANGER		1	1	Including No. 28
21	G	G2W 001 350	OUTDOOR FAN MOTOR	MF	1	1	RC0J50-□□
22	G	————	LABEL		1	1	JG79R840H01
23	G	————	TRADE MARK		1	1	DK79G220H01
24	G	————	LABEL		1	1	JG79B901H01
25	G	————	LABEL		1	1	JG79R837H01
26	G	————	LABEL		1	1	DG79T472H01
⑳	G	G2W 002 371	COMPRESSOR LEAD WIRE ASSEMBLY		1	1	
㉑	G	G2W 001 672	CT_PIPE ASSEMBLY		1	1	Including capillary tube ø3.0xø1.8x600 (x2)
㉒	G	G2W 001 765	DRAIN SOCKET		1	1	

RoHS PARTS LIST

MUZ-AP42VG

1-6. OUTDOOR UNIT ELECTRICAL PARTS



RoHS PARTS LIST

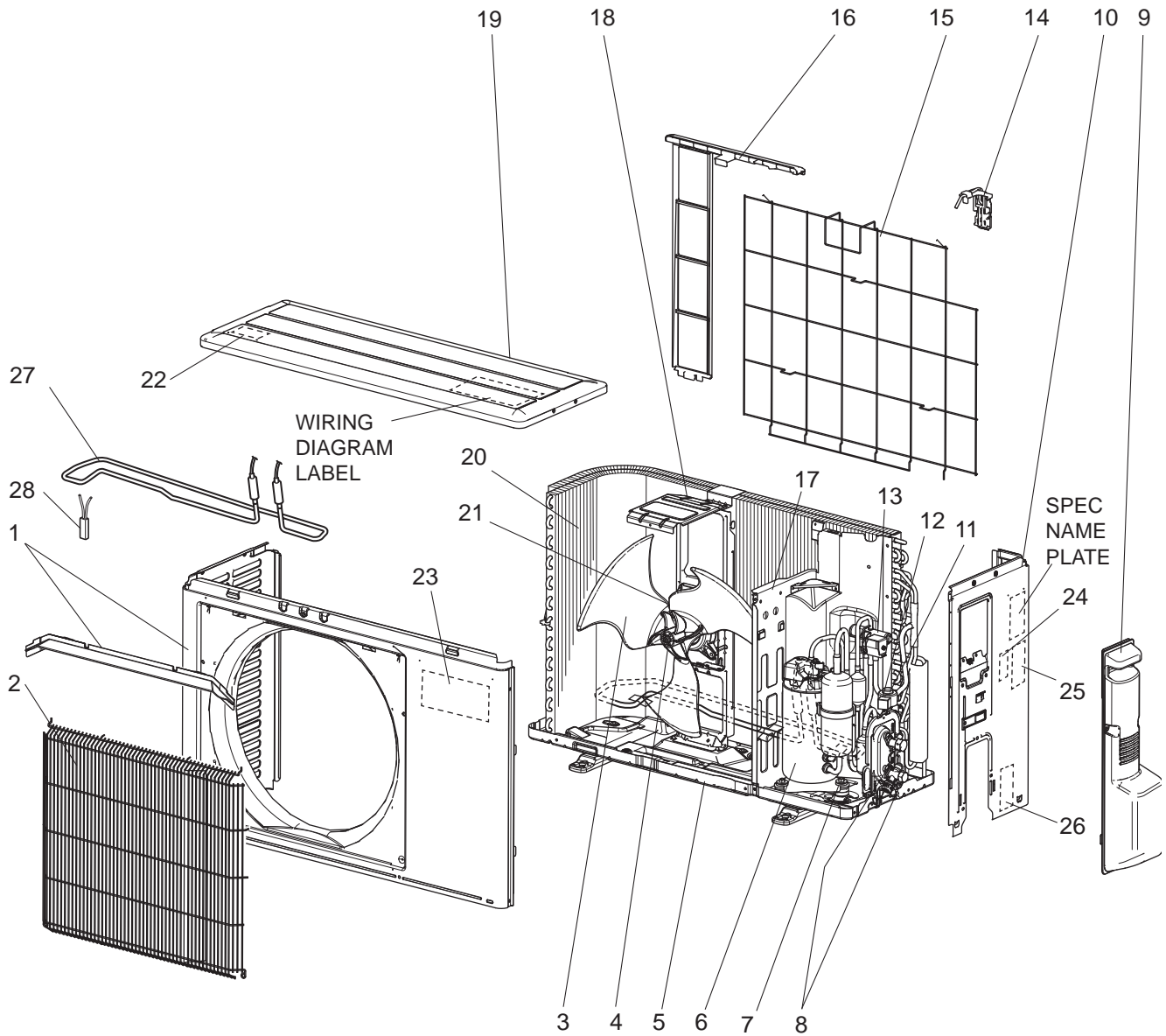
1-6. OUTDOOR UNIT ELECTRICAL PARTS

No.	RoHS	Part No.	Part Name	Symbol in Wiring Diagram	Q'ty/unit		Remarks
					MUZ-AP		
					42VG-		
					[E1]	[E1]	
1	G	G2W 002 359	REACTOR	L61	1	1	
2	G	G2W 001 353	THERMISTOR SET	RT61, RT62	1	1	DEFROST, DISCHARGE
3	G	G2W 001 355	AMBIENT TEMPERATURE THERMISTOR	RT65	1	1	
4	G	G2W 001 357	OUTDOOR HEAT EXCHANGER TEMPERATURE THERMISTOR	RT68	1	1	
5	G	G2W 001 365	R.V. COIL ASSEMBLY	21S4	1	1	
6	G	G2W 001 373	TERMINAL BLOCK	TB1	1	1	5P (S1, S2, S3, L, N)
7	G	_____	P.C. BOARD COVER		1	1	DY02B869G01, SQ33C889H05 (2 PCS)
8	G	_____	P.C. BOARD SUPPORT		1	1	DY25A804G02
9	G	G2W 004 460	INVERTER P.C. BOARD ASSEMBLY		1	1	

RoHS PARTS LIST

MUZ-AP42VGH

1-7. OUTDOOR UNIT STRUCTURAL PARTS AND FUNCTIONAL PARTS



RoHS PARTS LIST

1-7. OUTDOOR UNIT STRUCTURAL PARTS AND FUNCTIONAL PARTS

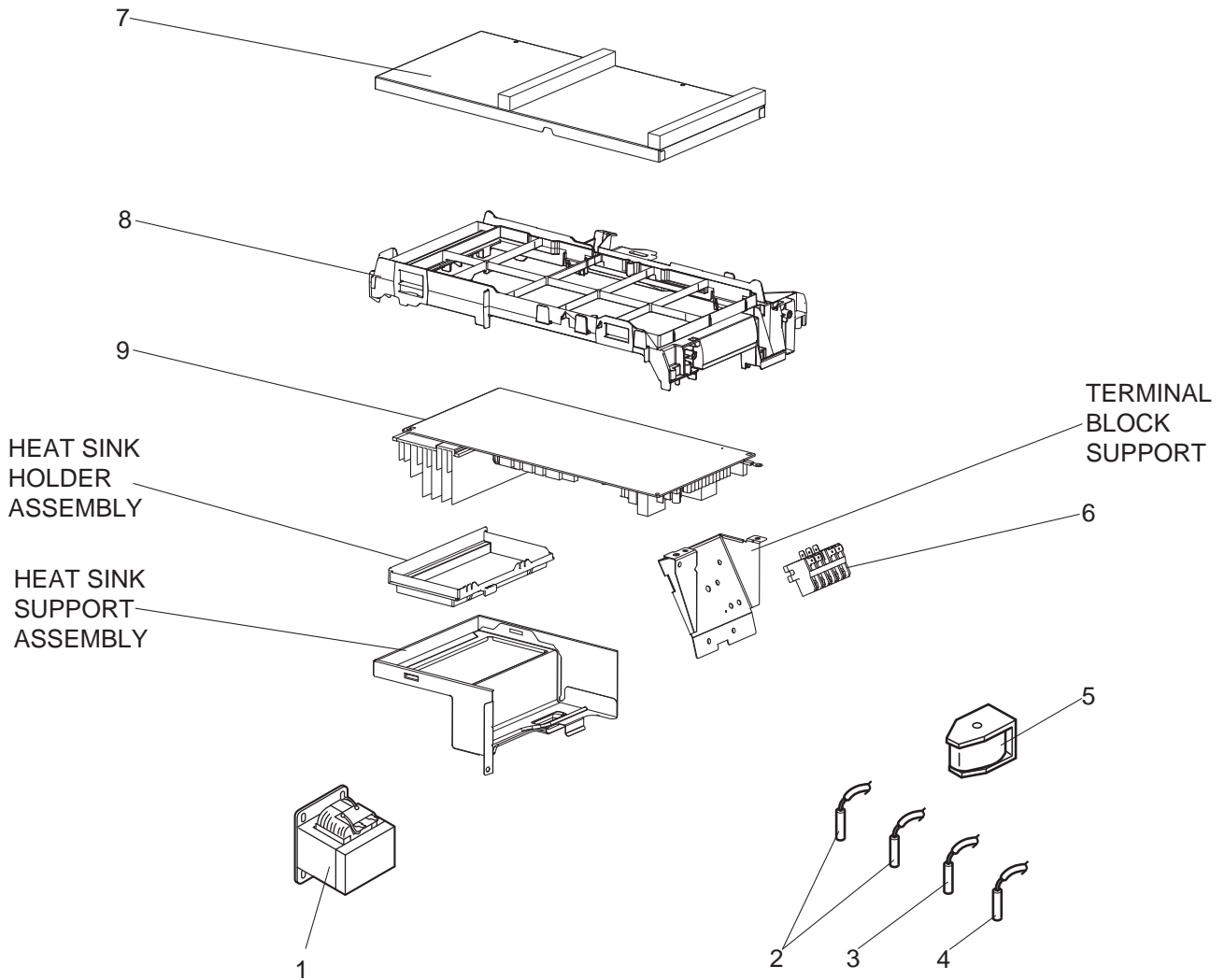
Part numbers that are circled are not shown in the illustration.

No.	RoHS	Part No.	Part Name	Symbol in Wiring Diagram	Q'ty/unit	Remarks
					MUZ-AP42VGH- E1	
1	G	G2W 001 050	CABINET		1	Including ice guard, Not including No. 23
2	G	G2W 001 063	WIRE GRILLE		1	
3	G	G2W 001 550	PROPELLER FAN		1	
4	G	G2W 001 753	PROPELLER FAN NUT		1	
5	G	G2W 002 055	BASE ASSEMBLY		1	
6	G	G2W 002 650	COMPRESSOR	MC	1	SVB130FBBMC
7	G	G2W 002 773	COMPRESSOR RUBBER SET		3	3 RUBBERS/SET
8	G	G2W 001 655	STOP VALVE ASSEMBLY		1	Gas: ø9.52 Liq: ø6.35 Including pipes
9	G	G2W 001 053	SERVICE PANEL ASSEMBLY		1	
10	G	G2W 001 060	BACK PANEL ASSEMBLY		1	Not including SPEC NAME PLATE or No. 24 to 26
11	G	G2W 001 668	EXPANSION VALVE ASSEMBLY		1	Including capillary tube ø4.0xø2.4x240
12	G	G2W 001 362	EXPANSION VALVE COIL	LEV	1	
13	G	G2W 001 665	4-WAY VALVE		1	
14	G	————	THERMO HOLDER (AMBIENT)		1	DK25A972G04
15	G	G2W 002 067	CONDENSER WIRE NET ASSEMBLY		1	
16	G	G2W 001 065	CONDENSER NET		1	
17	G	G2W 004 150	SEPARATOR		1	
18	G	G2W 002 154	MOTOR SUPPORT		1	
19	G	G2W 001 057	TOP PANEL ASSEMBLY		1	Not including WIRING DIAGRAM LABEL or No. 22
20	G	G2W 002 660	OUTDOOR HEAT EXCHANGER		1	Including No. 30
21	G	G2W 001 350	OUTDOOR FAN MOTOR	MF	1	RC0J50-□□
22	G	————	LABEL		1	JG79R840H01
23	G	————	TRADE MARK		1	DK79G220H01
24	G	————	LABEL		1	JG79B901H01
25	G	————	LABEL		1	JG79R837H01
26	G	————	LABEL		1	DG79T472H01
27	G	G2W 001 368	DEFROST HEATER	H	1	
28	G	G2W 001 377	HEATER PROTECTOR ASSEMBLY	26H	1	
②9	G	G2W 002 371	COMPRESSOR LEAD WIRE ASSEMBLY		1	
③0	G	G2W 001 672	CT_PIPE ASSEMBLY		1	Including capillary tube ø3.0xø1.8x600 (x2)

RoHS PARTS LIST

MUZ-AP42VGH

1-8. OUTDOOR UNIT ELECTRICAL PARTS



RoHS PARTS LIST

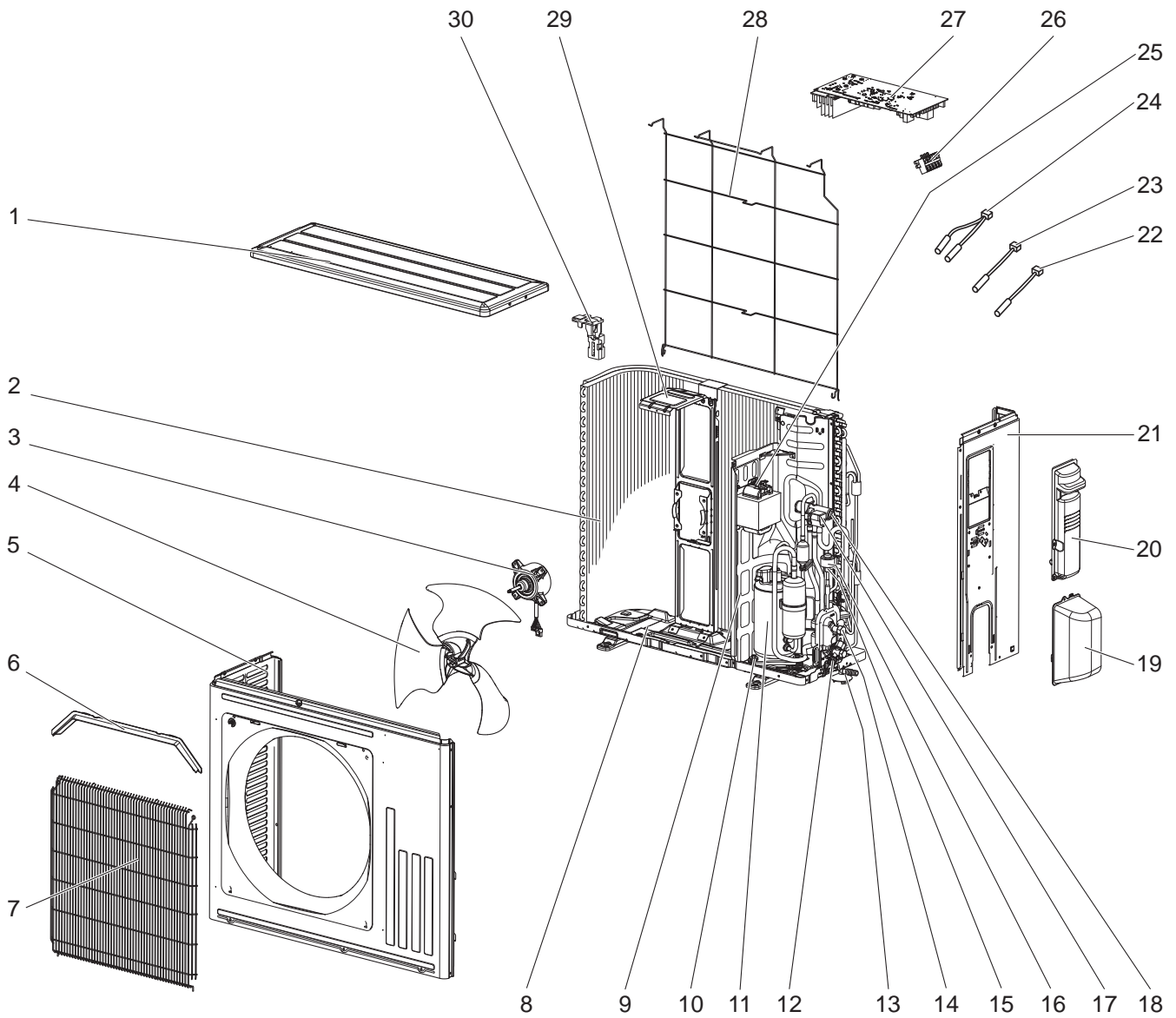
1-8. OUTDOOR UNIT ELECTRICAL PARTS

No.	RoHS	Part No.	Part Name	Symbol in Wiring Diagram	Q'ty/unit	Remarks
					MUZ-AP42VGH- E1	
1	G	G2W 002 359	REACTOR	L61	1	
2	G	G2W 001 353	THERMISTOR SET	RT61, RT62	1	DEFROST, DISCHARGE
3	G	G2W 001 355	AMBIENT TEMPERATURE THERMISTOR	RT65	1	
4	G	G2W 001 357	OUTDOOR HEAT EXCHANGER TEMPERATURE THERMISTOR	RT68	1	
5	G	G2W 001 365	R.V. COIL ASSEMBLY	21S4	1	
6	G	G2W 001 373	TERMINAL BLOCK	TB1	1	5P (S1, S2, S3, L, N)
7	G	————	P.C. BOARD COVER		1	DY02B869G01, SQ33C889H05 (2 PCS)
8	G	————	P.C. BOARD SUPPORT		1	DY25A804G02
9	G	G2W 001 460	INVERTER P.C. BOARD ASSEMBLY		1	

RoHS PARTS LIST

MUZ-AP50VG

1-9. OUTDOOR UNIT STRUCTURAL PARTS, ELECTRICAL PARTS AND FUNCTIONAL PARTS



RoHS PARTS LIST

1-9. OUTDOOR UNIT STRUCTURAL PARTS, ELECTRICAL PARTS AND FUNCTIONAL PARTS

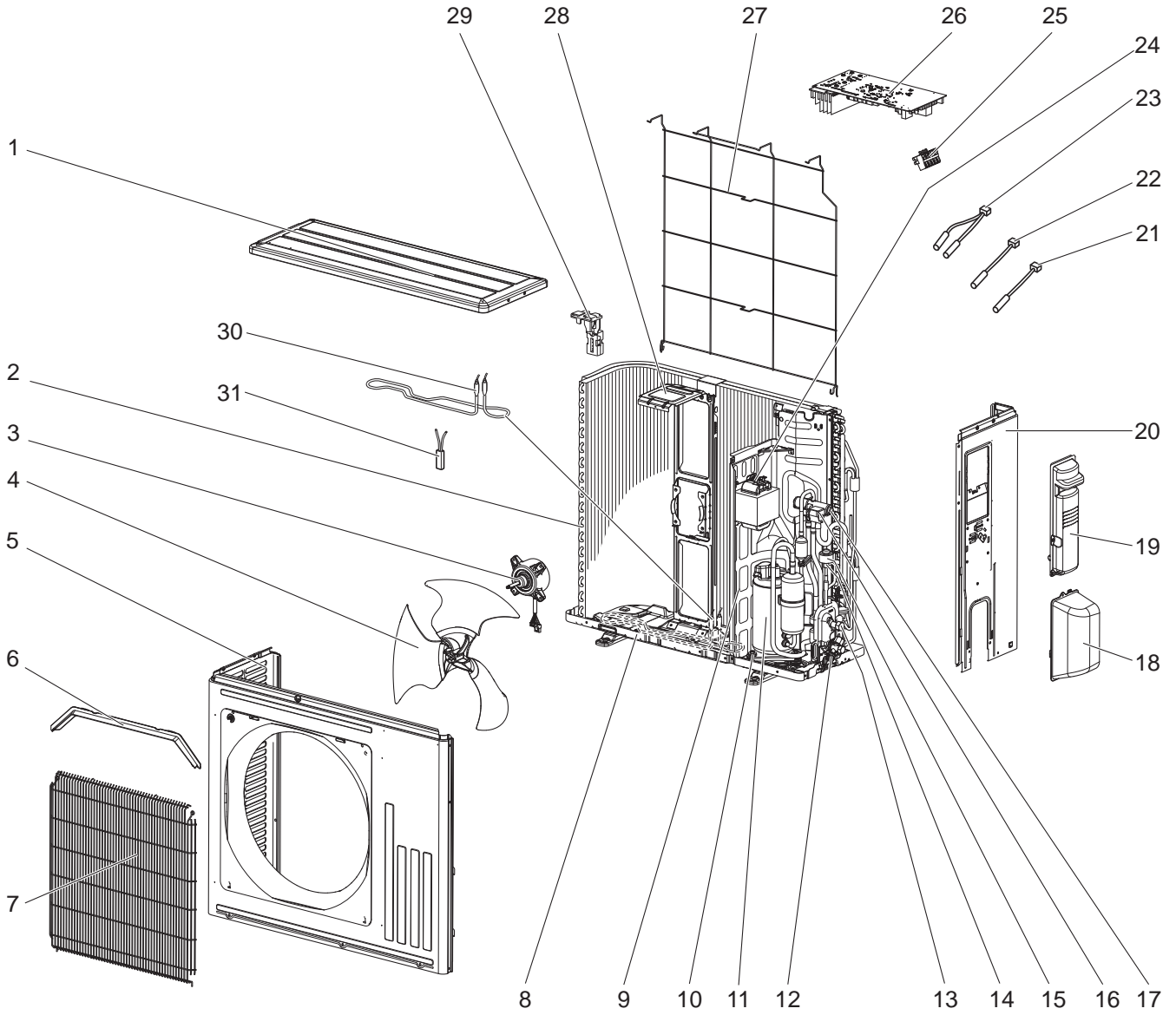
Part numbers that are circled are not shown in the illustration.

No.	RoHS	Part No.	Part Name	Symbol in Wiring Diagram	Q'ty/unit		Remarks
					MUZ-AP50VG-		
					E1	E1	
1	G	E12 Y86 297	TOP PANEL		1	1	
2	G	E12 Y86 630	OUTDOOR HEAT EXCHANGER		1	1	
3	G	E12 Y86 301	OUTDOOR FAN MOTOR	MF	1	1	RC0J50-□□
4	G	E12 Y86 501	PROPELLER FAN		1	1	
5	G	E12 Y86 232	CABINET		1	1	
6	G	E12 Y86 531	ICE GUARD		1	1	
7	G	E12 Y86 521	GRILLE		1	1	
8	G	E12 Y84 290	BASE		1	1	
9	G	E12 Y86 293	SEPARATOR		1	1	
10	G	E12 C34 506	COMPRESSOR RUBBER SET		3	3	3 RUBBERS/SET
11	G	E12 R83 900	COMPRESSOR	MC	1	1	SVB130FBBMT
12	G	E12 Y86 661	STOP VALVE (GAS)		1	1	∅9.52
13	G	E12 838 704	DRAIN SOCKET		1	1	
14	G	E12 Y86 662	STOP VALVE (LIQUID)		1	1	∅6.35
15	G	E12 Y84 640	EXPANSION VALVE		1	1	
16	G	E12 Y84 493	EXPANSION VALVE COIL	LEV	1	1	
17	G	E12 Y86 490	R.V. COIL	21S4	1	1	
18	G	E12 J44 961	4-WAY VALVE		1	1	
19	G	E12 Y86 650	VALVE COVER		1	1	
20	G	E12 Y86 245	SERVICE PANEL		1	1	
21	G	E12 Y86 233	BACK PANEL (OUT)		1	1	
22	G	E12 Y86 309	AMBIENT TEMPERATURE THERMISTOR	RT65	1	1	
23	G	E12 C34 307	OUTDOOR HEAT EXCHANGER TEMPERATURE THERMISTOR	RT68	1	1	
24	G	E12 Y86 306	THERMISTOR SET	RT61, RT62	1	1	DEFROST, DISCHARGE
25	G	E12 H21 337	REACTOR	L61	1	1	
26	G	E12 T95 374	TERMINAL BLOCK	TB1	1	1	5 P
27	G	E12 02B 451	INVERTER P.C. BOARD		1	1	Including heat sink and RT64
28	G	E12 Y86 525	CONDENSER WIRE NET		1	1	
29	G	E12 Y86 515	MOTOR SUPPORT		1	1	
30	G	E12 22A 079	THERMO HOLDER		1	1	
①	G	E12 P72 936	CAPILLARY TUBE		1	1	∅4.0 × ∅2.4 × 240
②	G	E12 F35 936	CAPILLARY TUBE		2	2	∅3.0 × ∅2.0 × 210

RoHS PARTS LIST

MUZ-AP50VGH

1-10. OUTDOOR UNIT STRUCTURAL PARTS, ELECTRICAL PARTS AND FUNCTIONAL PARTS



RoHS PARTS LIST

1-10. OUTDOOR UNIT STRUCTURAL PARTS, ELECTRICAL PARTS AND FUNCTIONAL PARTS

Part numbers that are circled are not shown in the illustration.

No.	RoHS	Part No.	Part Name	Symbol in Wiring Diagram	Q'ty/unit	Remarks
					MUZ-AP50VGH- [E1]	
1	G	E12 Y86 297	TOP PANEL		1	
2	G	E12 Y86 630	OUTDOOR HEAT EXCHANGER		1	
3	G	E12 Y86 301	OUTDOOR FAN MOTOR	MF	1	RC0J50-□□
4	G	E12 Y86 501	PROPELLER FAN		1	
5	G	E12 Y86 232	CABINET		1	
6	G	E12 Y86 531	ICE GUARD		1	
7	G	E12 Y86 521	GRILLE		1	
8	G	E12 Y96 290	BASE		1	
9	G	E12 Y86 293	SEPARATOR		1	
10	G	E12 C34 506	COMPRESSOR RUBBER SET		3	3 RUBBERS/SET
11	G	E12 R83 900	COMPRESSOR	MC	1	SVB130FBBMT
12	G	E12 Y86 661	STOP VALVE (GAS)		1	ø9.52
13	G	E12 Y86 662	STOP VALVE (LIQUID)		1	ø6.35
14	G	E12 Y84 640	EXPANSION VALVE		1	
15	G	E12 Y84 493	EXPANSION VALVE COIL	LEV	1	
16	G	E12 Y86 490	R.V. COIL	21S4	1	
17	G	E12 J44 961	4-WAY VALVE		1	
18	G	E12 Y86 650	VALVE COVER		1	
19	G	E12 Y86 245	SERVICE PANEL		1	
20	G	E12 Y86 233	BACK PANEL (OUT)		1	
21	G	E12 Y86 309	AMBIENT TEMPERATURE THERMISTOR	RT65	1	
22	G	E12 C34 307	OUTDOOR HEAT EXCHANGER TEMPERATURE THERMISTOR	RT68	1	
23	G	E12 Y86 306	THERMISTOR SET	RT61, RT62	1	DEFROST, DISCHARGE
24	G	E12 H21 337	REACTOR	L61	1	
25	G	E12 T95 374	TERMINAL BLOCK	TB1	1	5 P
26	G	E12 03B 451	INVERTER P.C. BOARD		1	Including heat sink and RT64
27	G	E12 Y86 525	CONDENSER WIRE NET		1	
28	G	E12 Y86 515	MOTOR SUPPORT		1	
29	G	E12 22A 079	THERMO HOLDER		1	
30	G	E12 03B 526	DEFROST HEATER	H	1	
31	G	E12 03B 381	HEATER PROTECTOR	26H	1	
32	G	E12 P72 936	CAPILLARY TUBE		1	ø4.0 × ø2.4 × 240
33	G	E12 F35 936	CAPILLARY TUBE		2	ø3.0 × ø2.0 × 210

mitsubishi electric corporation

HEAD OFFICE: TOKYO BUILDING, 2-7-3, MARUNOUCHI, CHIYODA-KU, TOKYO 100-8310, JAPAN

© Copyright 2017 MITSUBISHI ELECTRIC CORPORATION

Published: Dec. 2017. No. OBB789

Made in Japan

Specifications are subject to change without notice.