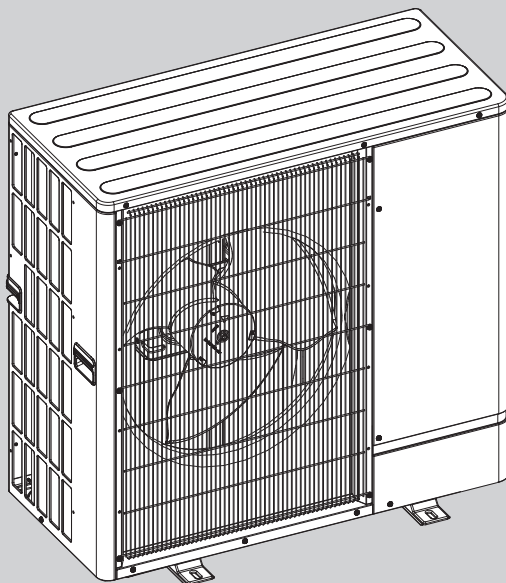


PARTS CATALOG R410A

[Model Name]	[Service Ref.]
PUHZ-W85VAA	PUHZ-W85VAA.UK
PUHZ-W112VAA	PUHZ-W112VAA.UK
PUHZ-W85YAA	PUHZ-W85YAA.UK
PUHZ-W112YAA	PUHZ-W112YAA.UK

Note:
• RoHS compliant products
have <G> mark on spec
name plate.

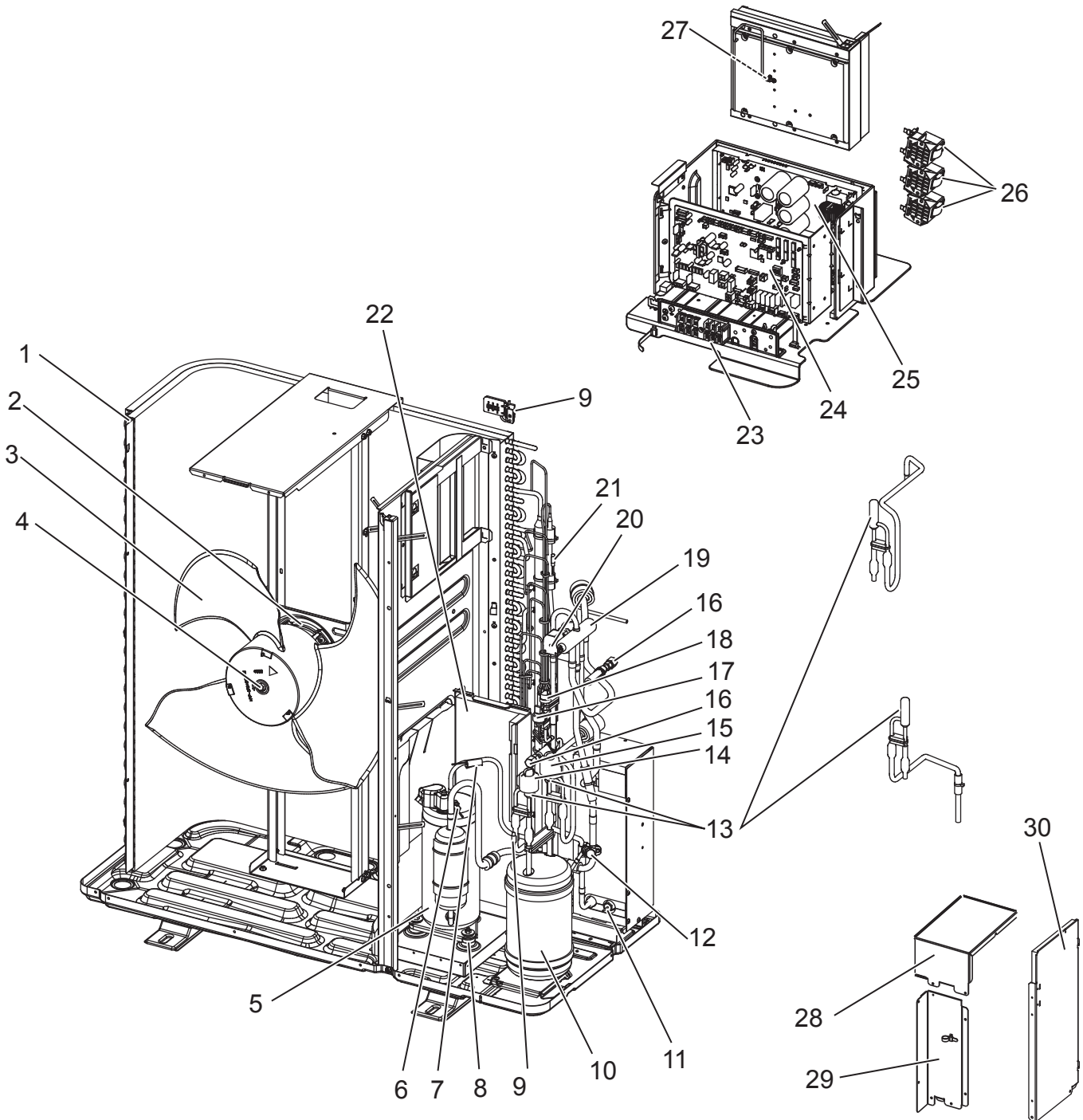


CONTENTS

- 1. SERVICE PARTS LIST (RoHS)2
- 2. OPTIONAL PARTS..... 14

SERVICE MANUAL (OCH681)

**FUNCTIONAL AND ELECTRICAL PARTS
PUHZ-W85VAA.UK**

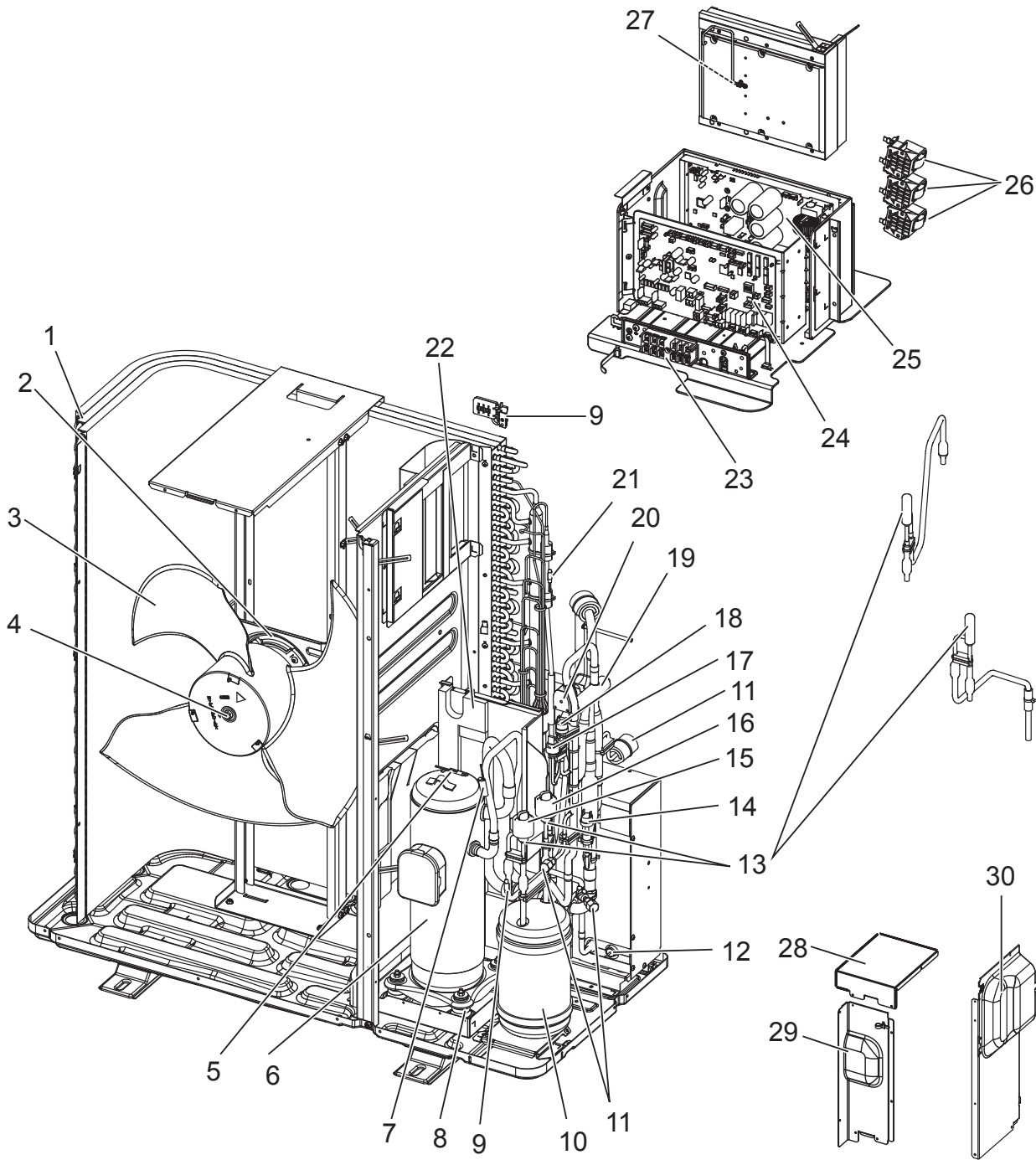


SERVICE PARTS LIST (RoHS)

No.	RoHS	Parts No.	Parts Name	Specification	Q'ty/ unit	Remarks (Drawing No.)	Wiring Diagram Symbol
					PUHZ-W85VAA.UK		
1	G	S70 E43 408	HEAT EXCHANGER		1		
2	G	S70 E95 763	FAN MOTOR		1		MF1
3	G	S70 E50 115	PROPELLER FAN		1		
4	G	S70 K01 097	NUT		1		
5	G	S70 E37 400	COMPRESSOR	SNB220FEGMC-L1	1		MC
6	G	S70 E73 202	THERMISTOR (COMP. SURFACE)		1		TH33
7	G	S70 E77 202	THERMISTOR (DISCHARGE)		1		TH4
8	G	S70 E03 004	RUBBER MOUNT		3		
9	G	S70 E81 202	THERMISTOR-W (PLATE HEX LIQUID, AMBIENT)	1150/1150	1		TH6/7
10	G	S70 E20 440	RECEIVER		1		
11	G	S70 E80 202	THERMISTOR (WATER TEMP)		1		TH34
12	G	S70 E04 413	CHARGE PLUG		1		
13	G	S70 E80 401	EXPANSION VALVE	UKV-18D35	2		
14	G	S70 E87 402	LINEAR EXPANSION VALVE COIL	UKV-A211	1		LEV-B
15	G	S70 E88 402	LINEAR EXPANSION VALVE COIL	UKV-A212	1		LEV-A
16	G	S70 E05 413	CHARGE PLUG		2		
17	G	S70 E11 208	HIGH PRESSURE SENSOR		1		63HS
18	G	S70 E10 208	HIGH PRESSURE SWITCH	OFF 4.14MPA	1		63H
19	G	S70 E04 403	REVERSING VALVE		1		
20	G	S70 E15 242	SOLENOID COIL <4WAY COIL>		1		21S4
21	G	S70 E47 202	THERMISTOR-H (LIQUID)	1050 XAP	1		TH3
22	G	S70 E06 005	COMP CASE BACK		1		
23	G	S70 E11 716	TERMINAL BLOCK	6P(L,N,E + S1,S2,S3)	1		TB1
24	G	S70 E26 315	CONTROLLER CIRCUIT BOARD		1		C.B.
25	G	S70 E50 313	POWER CIRCUIT BOARD		1		P.B.
26	G	S70 K95 259	REACTOR	18mH	3		DCL1,2,3
27	G	S70 E76 202	THERMISTOR (HEAT SINK)		1		TH8
28	G	S70 E06 008	COMP CASE TOP		1		
29	G	S70 E06 006	COMP CASE FRONT		1		
30	G	S70 E06 007	COMP CASE SIDE		1		

SERVICE PARTS LIST (RoHS)

FUNCTIONAL AND ELECTRICAL PARTS
PUHZ-W112VAA.UK

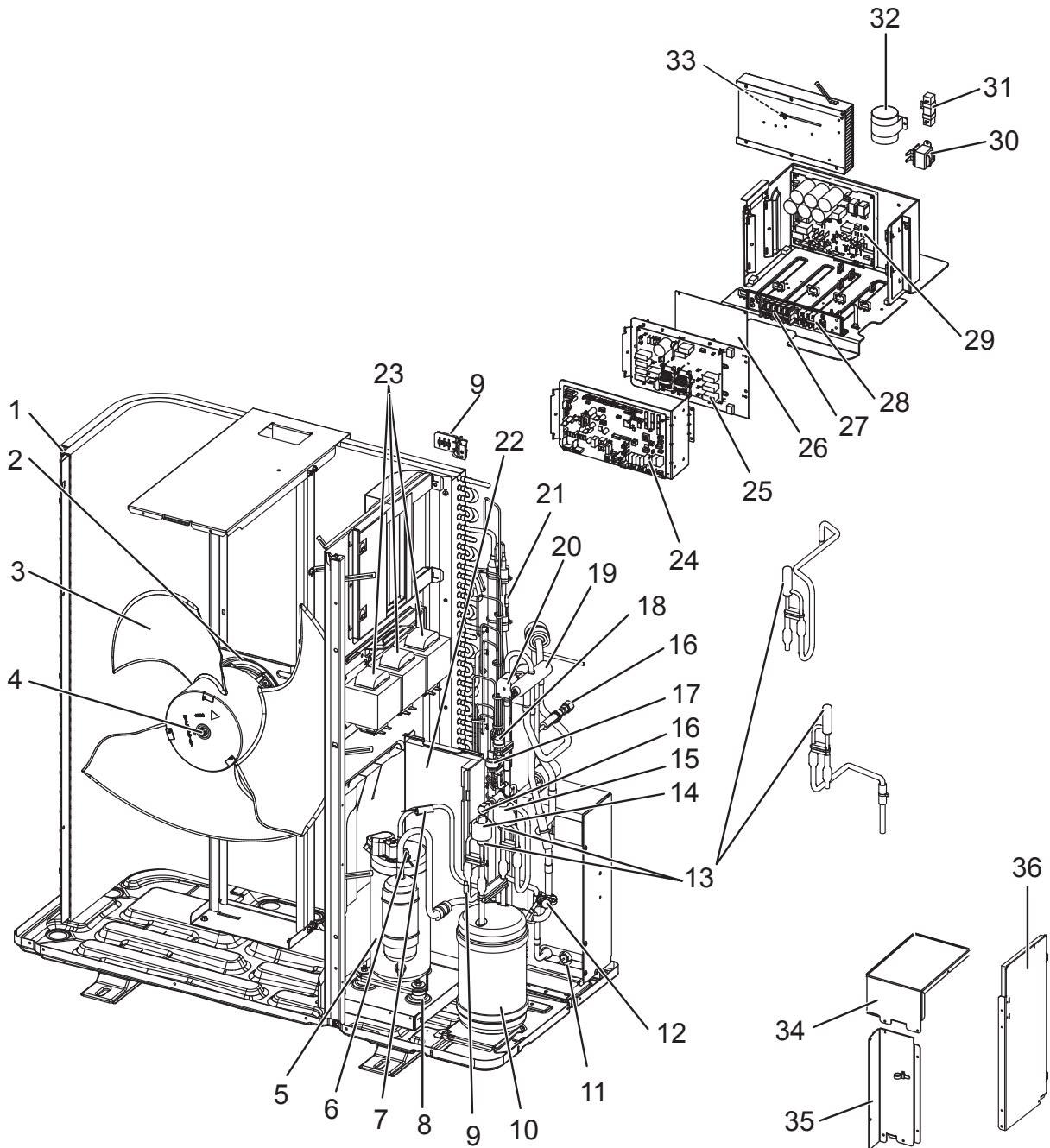


SERVICE PARTS LIST (RoHS)

No.	RoHS	Parts No.	Parts Name	Specification	Q'ty/ unit	Remarks (Drawing No.)	Wiring Diagram Symbol
					PUHZ-W112VAA.UK		
1	G	S70 E42 408	HEAT EXCHANGER		1		
2	G	S70 E96 763	FAN MOTOR		1		MF1
3	G	S70 E50 115	PROPELLER FAN		1		
4	G	S70 K01 097	NUT		1		
5	G	S70 E74 202	THERMISTOR (COMP. SURFACE)		1		TH33
6	G	S70 E39 400	COMPRESSOR	DNB28FBAMT	1		MC
7	G	S70 E78 202	THERMISTOR (DISCHARGE)		1		TH4
8	G	S70 E04 004	RUBBER MOUNT		4		
9	G	S70 E81 202	THERMISTOR-W (PLATE HEX LIQUID, AMBIENT)	1150/1150	1		TH6/7
10	G	S70 E20 440	RECEIVER		1		
11	G	S70 E04 413	CHARGE PLUG		3		
12	G	S70 E80 202	THERMISTOR (WATER TEMP)		1		TH34
13	G	S70 E96 401	EXPANSION VALVE	UKV-25D251	2		
14	G	S70 H20 209	LOW PRESSURE SWITCH		1		63L
15	G	S70 E87 402	LINEAR EXPANSION VALVE COIL	UKV-A211	1		LEV-B
16	G	S70 E88 402	LINEAR EXPANSION VALVE COIL	UKV-A212	1		LEV-A
17	G	S70 E11 208	HIGH PRESSURE SENSOR		1		63HS
18	G	S70 E10 208	HIGH PRESSURE SWITCH	OFF 4.14MPA	1		63H
19	G	S70 E08 403	REVERSING VALVE		1		
20	G	S70 E20 242	SOLENOID COIL <4WAY COIL>		1		21S4
21	G	S70 E47 202	THERMISTOR-H (LIQUID)	1050 XAP	1		TH3
22	G	S70 E07 005	COMP CASE BACK		1		
23	G	S70 E11 716	TERMINAL BLOCK	6P(L,N,E + S1,S2,S3)	1		TB1
24	G	S70 E26 315	CONTROLLER CIRCUIT BOARD		1		C.B.
25	G	S70 E51 313	POWER CIRCUIT BOARD		1		P.B.
26	G	S70 K95 259	REACTOR	18mH	3		DCL1,2,3
27	G	S70 E76 202	THERMISTOR (HEAT SINK)		1		TH8
28	G	S70 E07 008	COMP CASE TOP		1		
29	G	S70 E07 006	COMP CASE FRONT		1		
30	G	S70 E05 007	COMP CASE SIDE		1		

SERVICE PARTS LIST (RoHS)

FUNCTIONAL AND ELECTRICAL PARTS
PUHZ-W85YAA.UK

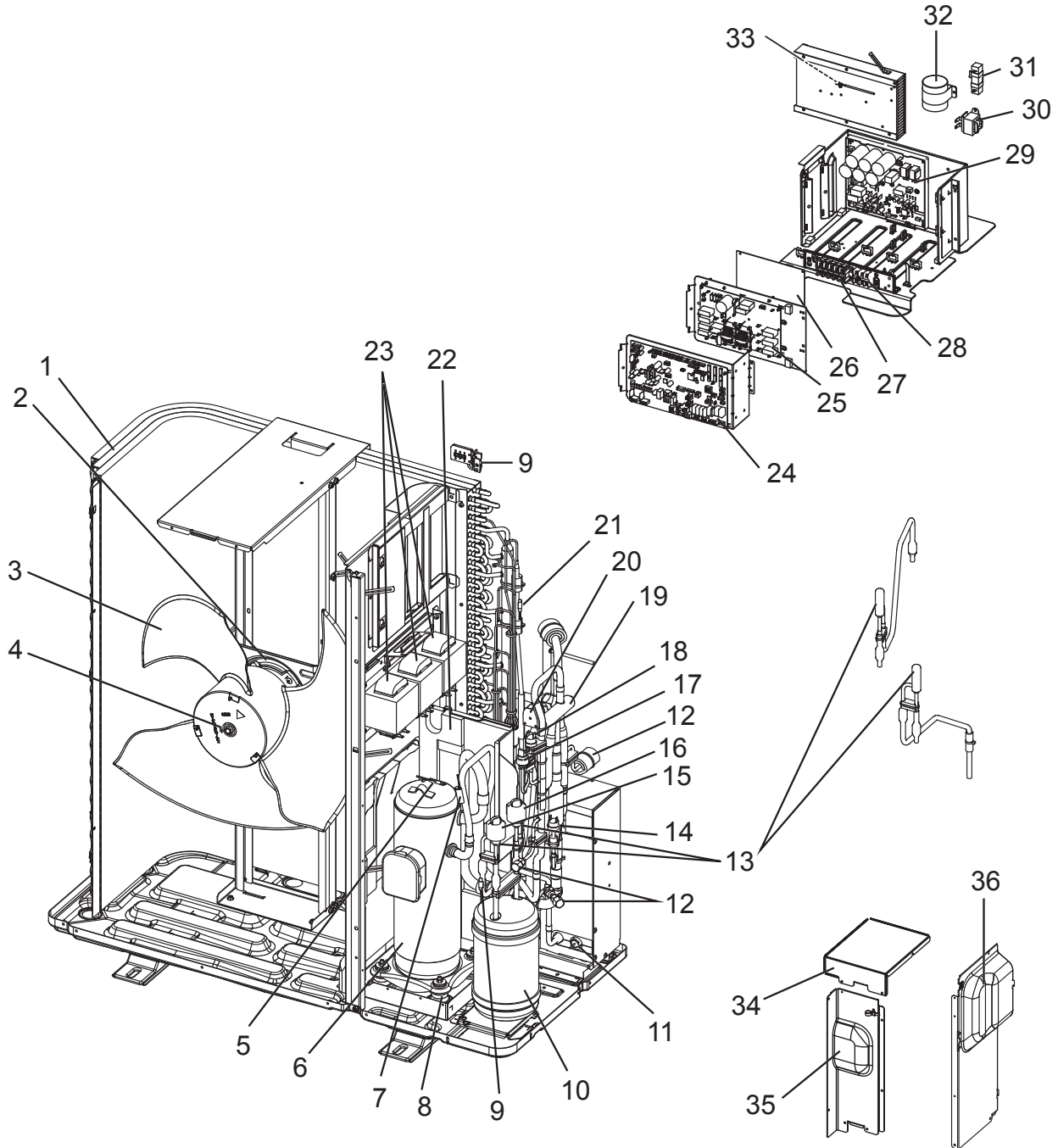


SERVICE PARTS LIST (RoHS)

No.	RoHS	Parts No.	Parts Name	Specification	Q'ty/ unit	Remarks (Drawing No.)	Wiring Diagram Symbol
					PUHZ-W85YAA.UK		
1	G	S70 E43 408	HEAT EXCHANGER		1		
2	G	S70 E95 763	FAN MOTOR		1		MF1
3	G	S70 E50 115	PROPELLER FAN		1		
4	G	S70 K01 097	NUT		1		
5	G	S70 E38 400	COMPRESSOR	SNB220FEAMC-L1	1		MC
6	G	S70 E73 202	THERMISTOR (COMP. SURFACE)		1		TH33
7	G	S70 E77 202	THERMISTOR (DISCHARGE)		1		TH4
8	G	S70 E03 004	RUBBER MOUNT		3		
9	G	S70 E81 202	THERMISTOR-W (PLATE HEX LIQUID, AMBIENT)	1150/1150	1		TH6/7
10	G	S70 E20 440	RECEIVER		1		
11	G	S70 E80 202	THERMISTOR (WATER TEMP)		1		TH34
12	G	S70 E04 413	CHARGE PLUG		1		
13	G	S70 E80 401	EXPANSION VALVE	UKV-18D35	2		
14	G	S70 E87 402	LINEAR EXPANSION VALVE COIL	UKV-A211	1		LEV-B
15	G	S70 E88 402	LINEAR EXPANSION VALVE COIL	UKV-A212	1		LEV-A
16	G	S70 E05 413	CHARGE PLUG		2		
17	G	S70 E11 208	HIGH PRESSURE SENSOR		1		63HS
18	G	S70 E10 208	HIGH PRESSURE SWITCH	OFF 4.14MPA	1		63H
19	G	S70 E04 403	REVERSING VALVE		1		
20	G	S70 E15 242	SOLENOID COIL <4WAY COIL>		1		21S4
21	G	S70 E47 202	THERMISTOR-H (LIQUID)	1050 XAP	1		TH3
22	G	S70 E06 005	COMP CASE BACK		1		
23	G	S70 K80 259	REACTOR		3		ACL1,2,3
24	G	S70 E26 315	CONTROLLER CIRCUIT BOARD		1		C.B.
25	G	S70 E85 346	NOISE FILTER CIRCUIT BOARD		1		N.F.
26	G	S70 E75 313	CONVERTOR CIRCUIT BOARD		1		CONV.B.
27	G	S70 E09 716	TERMINAL BLOCK	5P(L1,L2,L3,N,E)	1		TB1
28	G	S70 E08 716	TERMINAL BLOCK	3P(S1/S2/S3)	1		TB2
29	G	S70 E52 313	POWER CIRCUIT BOARD		1		P.B.
30	G	S70 K90 259	REACTOR		1		ACL4
31	G	S70 E20 234	RESISTOR		1		RS
32	G	S70 E81 255	CAPACITOR	30uF	1		CK
33	G	S70 E55 202	THERMISTOR (HEAT SINK)		1		TH8
34	G	S70 E06 008	COMP CASE TOP		1		
35	G	S70 E06 006	COMP CASE FRONT		1		
36	G	S70 E06 007	COMP CASE SIDE		1		

SERVICE PARTS LIST (RoHS)

FUNCTIONAL AND ELECTRICAL PARTS
PUHZ-W112YAA.UK

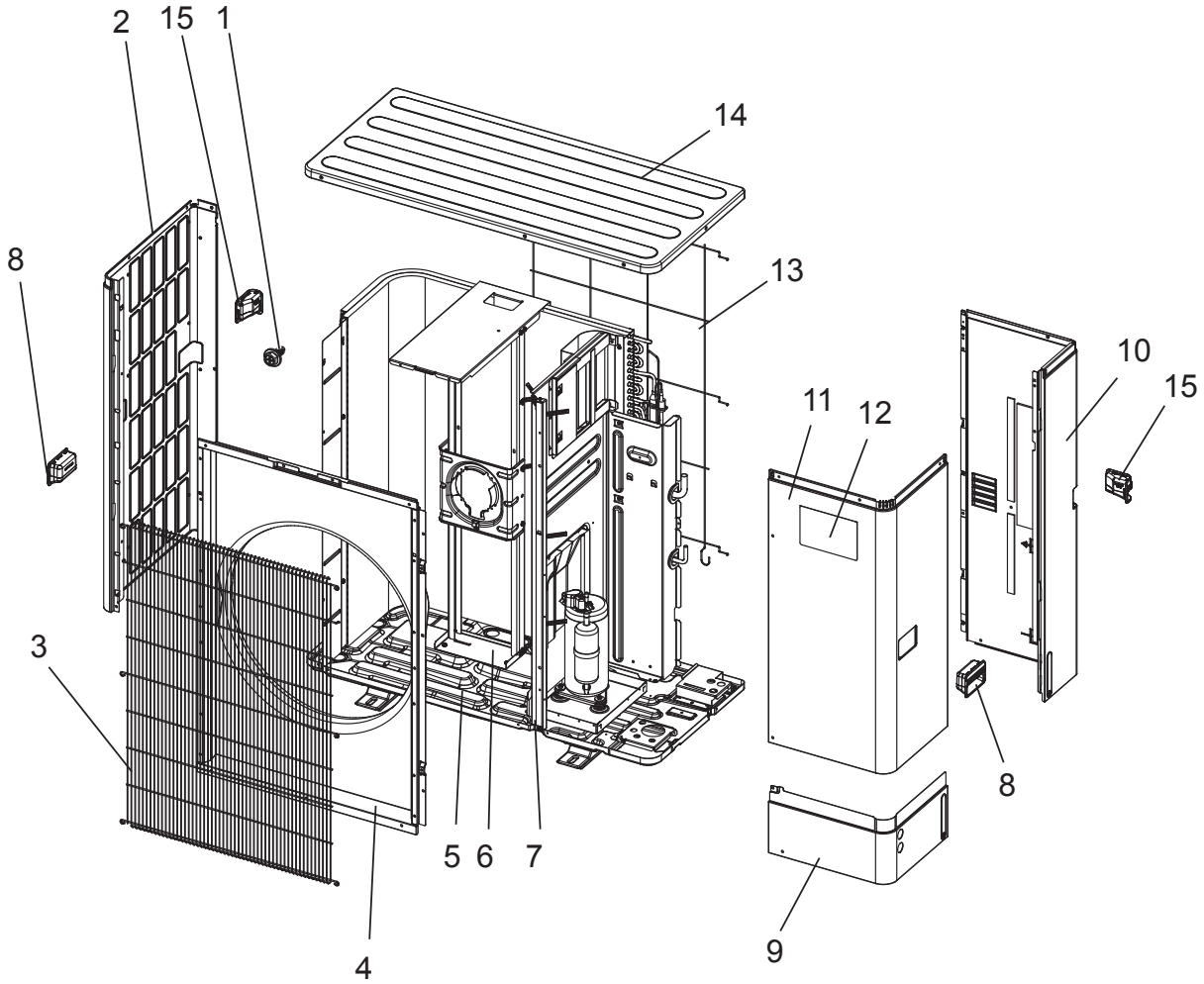


SERVICE PARTS LIST (RoHS)

No.	RoHS	Parts No.	Parts Name	Specification	Q'ty/ unit	Remarks (Drawing No.)	Wiring Diagram Symbol
					PUHZ-W112YAA.UK		
1	G	S70 E42 408	HEAT EXCHANGER		1		
2	G	S70 E96 763	FAN MOTOR		1		MF1
3	G	S70 E50 115	PROPELLER FAN		1		
4	G	S70 K01 097	NUT		1		
5	G	S70 E74 202	THERMISTOR (COMP. SURFACE)		1		TH33
6	G	S70 E23 400	COMPRESSOR	DNB28FBBMT	1		MC
7	G	S70 E78 202	THERMISTOR (DISCHARGE)		1		TH4
8	G	S70 E04 004	RUBBER MOUNT		4		
9	G	S70 E81 202	THERMISTOR-W (PLATE HEX LIQUID, AMBIENT)	1150/1150	1		TH6/7
10	G	S70 E20 440	RECEIVER		1		
11	G	S70 E80 202	THERMISTOR (WATER TEMP)		1		TH34
12	G	S70 E04 413	CHARGE PLUG		3		
13	G	S70 E96 401	EXPANSION VALVE	UKV-25D251	2		
14	G	S70 H20 209	LOW PRESSURE SWITCH		1		63L
15	G	S70 E87 402	LINEAR EXPANSION VALVE COIL	UKV-A211	1		LEV-B
16	G	S70 E88 402	LINEAR EXPANSION VALVE COIL	UKV-A212	1		LEV-A
17	G	S70 E11 208	HIGH PRESSURE SENSOR		1		63HS
18	G	S70 E10 208	HIGH PRESSURE SWITCH	OFF 4.14MPA	1		63H
19	G	S70 E08 403	REVERSING VALVE		1		
20	G	S70 E20 242	SOLENOID COIL <4WAY COIL>		1		21S4
21	G	S70 E47 202	THERMISTOR-H (LIQUID)	1050 XAP	1		TH3
22	G	S70 E07 005	COMP CASE BACK		1		
23	G	S70 K80 259	REACTOR		3		ACL1,2,3
24	G	S70 E26 315	CONTROLLER CIRCUIT BOARD		1		C.B.
25	G	S70 E85 346	NOISE FILTER CIRCUIT BOARD		1		N.F.
26	G	S70 E75 313	CONVERTOR CIRCUIT BOARD		1		CONV.B.
27	G	S70 E09 716	TERMINAL BLOCK	5P(L1,L2,L3,N,E)	1		TB1
28	G	S70 E08 716	TERMINAL BLOCK	3P(S1/S2/S3)	1		TB2
29	G	S70 E53 313	POWER CIRCUIT BOARD		1		P.B.
30	G	S70 K90 259	REACTOR		1		ACL4
31	G	S70 E20 234	RESISTOR		1		RS
32	G	S70 E81 255	CAPACITOR	30uF	1		CK
33	G	S70 E55 202	THERMISTOR (HEAT SINK)		1		TH8
34	G	S70 E07 008	COMP CASE TOP		1		
35	G	S70 E07 006	COMP CASE FRONT		1		
36	G	S70 E05 007	COMP CASE SIDE		1		

SERVICE PARTS LIST (RoHS)

STRUCTURAL PARTS
PUHZ-W85VAA.UK
PUHZ-W85YAA.UK

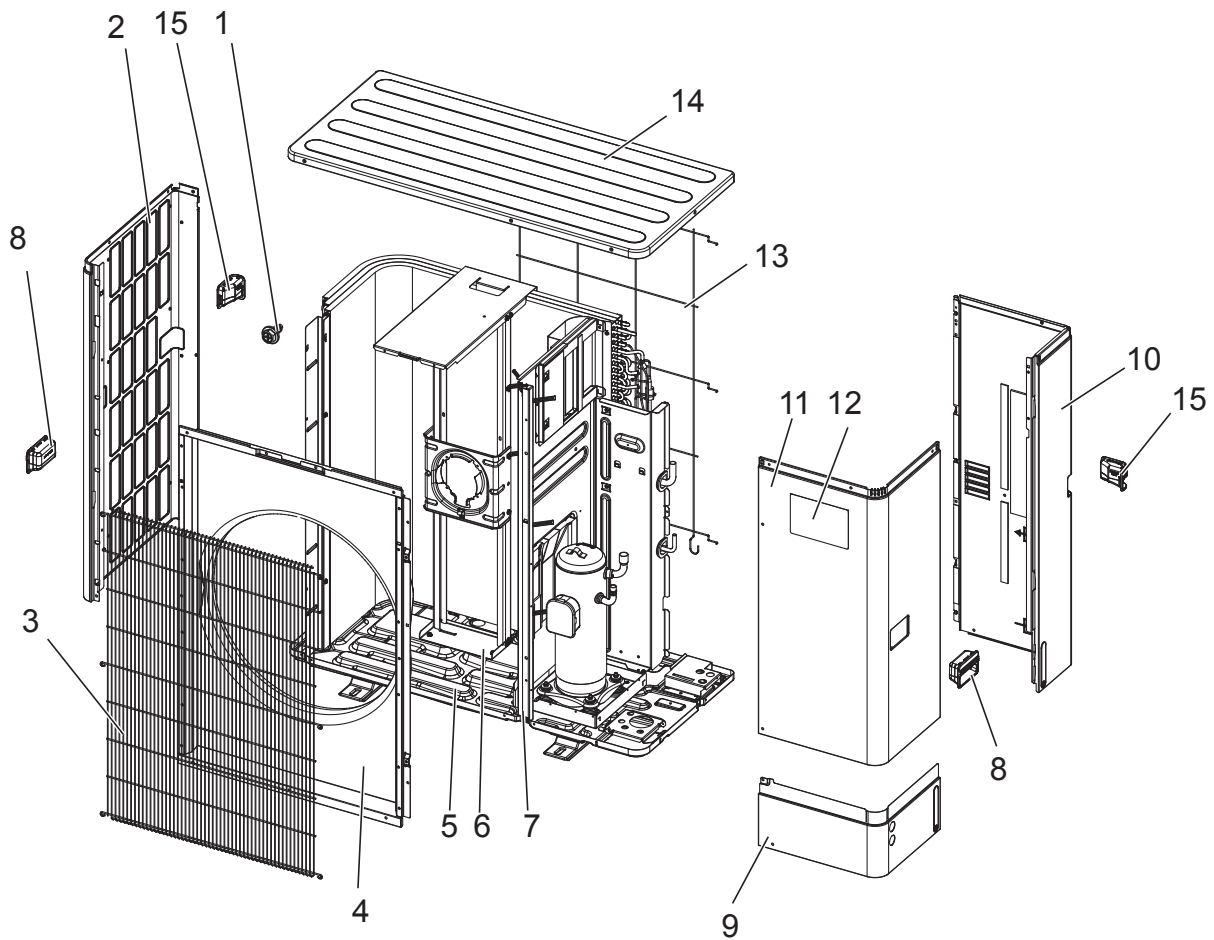


SERVICE PARTS LIST (RoHS)

No.	RoHS	Parts No.	Parts Name	Specification	Q'ty/unit		Remarks (Drawing No.)
					PUHZ-W85VAA.UK	PUHZ-W85YAA.UK	
1	G	—	F.ST SCREW	(5×12)	57	57	(DG12F536H12)
2	G	S70 E22 662	SIDE PANEL (L)		1	1	
3	G	S70 E04 675	WIRE GRILLE		1	1	
4	G	S70 E73 668	FRONT PANEL		1	1	
5	G	S70 E53 686	BASE ASSY		1	1	
6	G	S70 E76 130	MOTOR SUPPORT		1	1	
7	G	—	SEPARATOR		1		(BK00V807G17)
	G	—	SEPARATOR			1	(BK00V807G29)
8	G	S70 E40 655	HANDLE (FRONT)		2	2	
9	G	S70 E75 658	COVER PANEL (FRONT)		1	1	
10	G	S70 E75 662	SIDE PANEL(R)/COVER PANEL(R)		1	1	
11	G	S70 E91 661	SERVICE PANEL		1	1	
12	G	S70 E95 699	BRAND LABEL (ECODAN)		1	1	
13	G	S70 E40 698	REAR GUARD		1	1	
14	G	S70 E70 641	TOP PANEL		1	1	
15	G	S70 E50 655	HANDLE (REAR)		2	2	

SERVICE PARTS LIST (RoHS)

STRUCTURAL PARTS
PUHZ-W112VAA.UK
PUHZ-W112YAA.UK



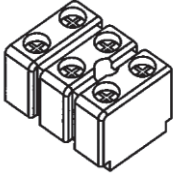

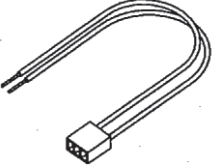
SERVICE PARTS LIST (RoHS)

No.	RoHS	Parts No.	Parts Name	Specification	Q'ty/unit		Remarks (Drawing No.)
					PUHZ-W112VAA.UK	PUHZ-W112YAA.UK	
1	G	—	F.ST SCREW	(5×12)	57	57	(DG12F536H12)
2	G	S70 E22 662	SIDE PANEL (L)		1	1	
3	G	S70 E04 675	WIRE GRILLE		1	1	
4	G	S70 E73 668	FRONT PANEL		1	1	
5	G	S70 E60 686	BASE ASSY		1	1	
6	G	S70 E78 130	MOTOR SUPPORT		1	1	
7	G	—	SEPARATOR		1		(BK00V807G21)
	G	—	SEPARATOR			1	(BK00V807G31)
8	G	S70 E40 655	HANDLE (FRONT)		2	2	
9	G	S70 E75 658	COVER PANEL (FRONT)		1	1	
10	G	S70 E75 662	SIDE PANEL(R)/COVER PANEL (REAR)		1	1	
11	G	S70 E91 661	SERVICE PANEL		1	1	
12	G	S70 E95 699	BRAND LABEL (ECODAN)		1	1	
13	G	S70 E40 698	REAR GUARD		1	1	
14	G	S70 E70 641	TOP PANEL		1	1	
15	G	S70 E50 655	HANDLE (REAR)		2	2	

CONNECTOR FOR DRAIN HOSE HEATER

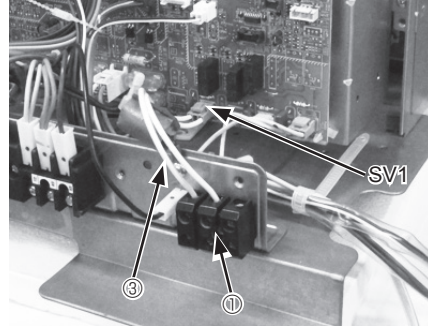
Parts No.	PAC-SE60RA-E
-----------	--------------

Contents

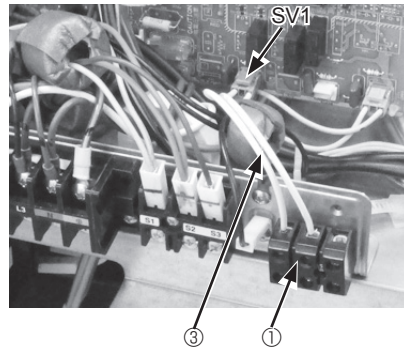
① Terminal block	×1
	
② Screw	×1
	
③ Lead wire with connector	×1
	

Installation

● PUAZ-***VAA models

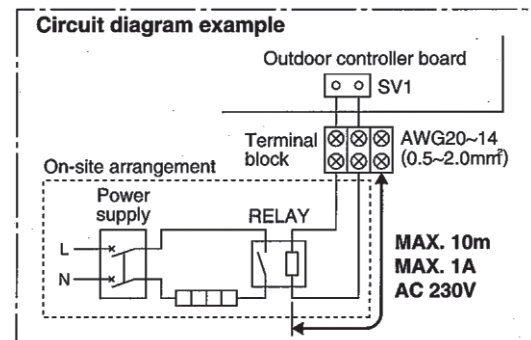


● PUAZ-***YAA models



1. Attach the terminal block ①, with the screw ②.
2. Connect the lead wire ③ connector side to SV1 port on the outdoor controller board.
3. Connect the lead wire ③ to the terminal block ①.
4. Wire local cables for a drain hose heater RELAY to the terminal block ①.

- Drain hose heater RELAY connection only
- MAX current 1A



SV1 on the controller board
→ Drain hose heater signal output
With PAC-SE60RA-E
From defrost start
For 15 min. ON signal provided

AIR DISCHARGE GUIDE

Parts No.	PAC-SH95AG-E
-----------	--------------

AIR PROTECTION GUIDE

Parts No.	PAC-SH96SG-E
-----------	--------------

ATTACHMENT (AIR DISCHARGE GUIDE/AIR PROTECTION GUIDE)

Parts No.	PAC-SJ82AT-E
-----------	--------------

DRAIN SOCKET

Parts No.	PAC-SG61DS-E
-----------	--------------

CENTRALISED DRAIN PAN

Parts No.	PAC-SJ83DP-E
-----------	--------------

SNOW GUARD FRONT

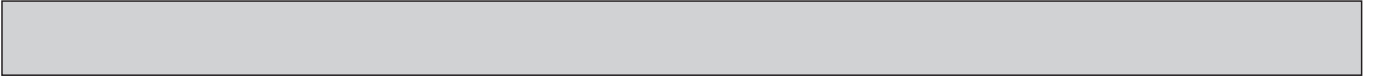
Parts No.	PAC-SNH11AF-E
-----------	---------------

SNOW GUARD SIDE

Parts No.	PAC-SNH11AS-E
-----------	---------------

SNOW GUARD BACK

Parts No.	PAC-SNH11AB-E
-----------	---------------



mitsubishi electric corporation

HEAD OFFICE : TOKYO BUILDING, 2-7-3, MARUNOUCHI, CHIYODA-KU, TOKYO 100-8310, JAPAN
