

INDOOR UNIT

No. OBB822

PARTS CATALOG

Models

MSZ-HR25VF - E1, ER1, ET1

MSZ-HR35VF - E1, ER1, ET1

MSZ-HR42VF - E1, ER1, ET1

MSZ-HR50VF - E1, ER1, ET1



MSZ-HR25VF



CONTENTS

1. SERVICE PARTS LIST.....	2
2. OPTIONAL PARTS.....	10

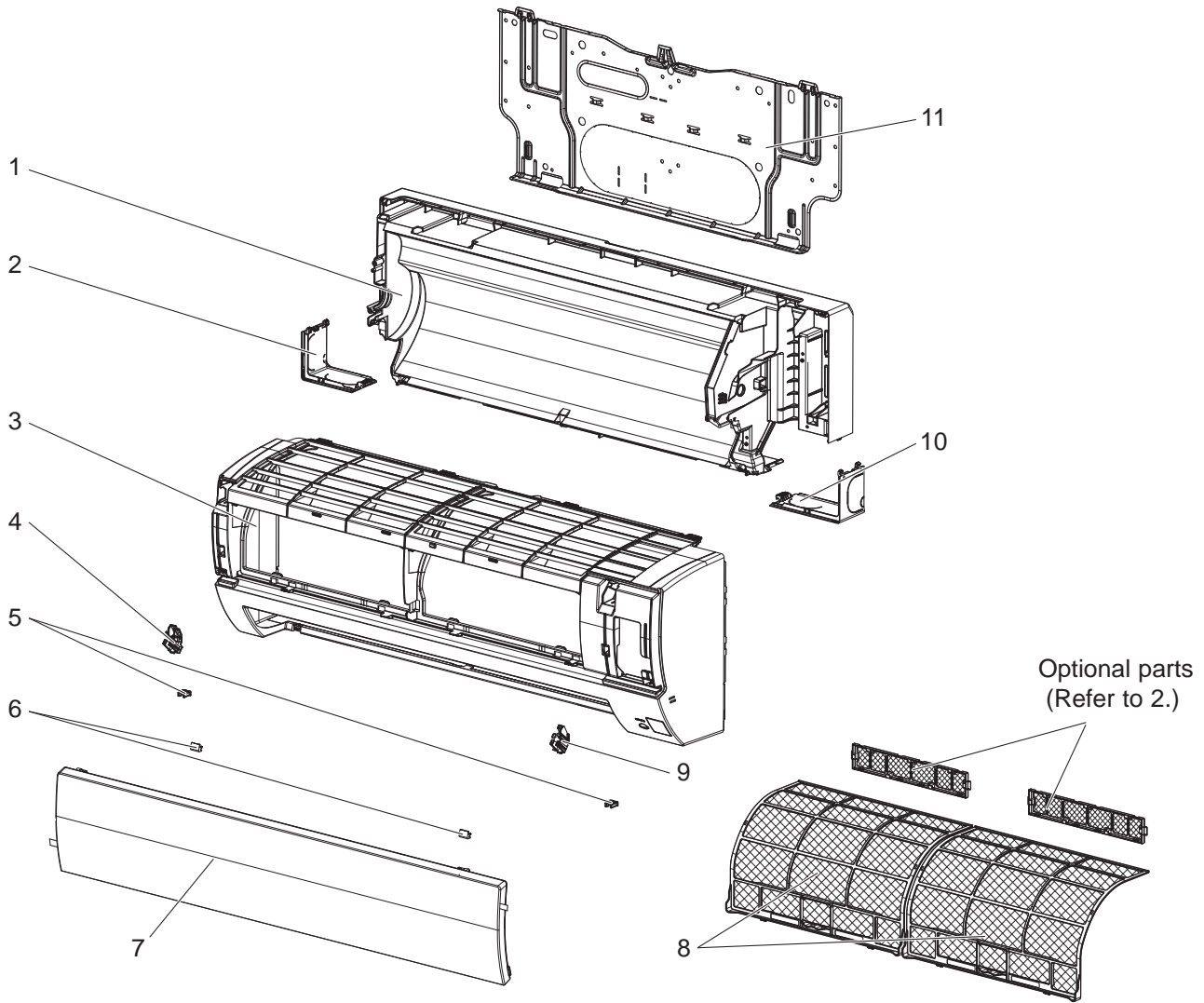
SERVICE MANUAL (OBH822)

1

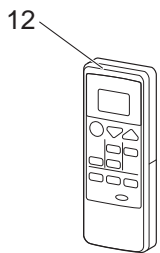
SERVICE PARTS LIST

MSZ-HR25VF MSZ-HR35VF

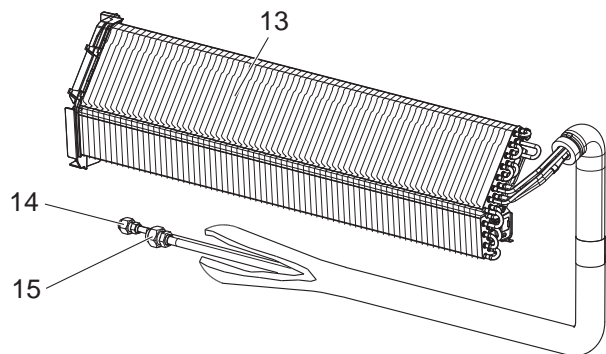
1-1. INDOOR UNIT STRUCTURAL PARTS



1-2. ACCESSORY AND REMOTE CONTROLLER



1-3. INDOOR UNIT HEAT EXCHANGER



1-1. INDOOR UNIT STRUCTURAL PARTS

No.	Part No.	Part name	Symbol in Wiring Diagram	Q'ty/unit						Remarks
				MSZ-HR						
				25VF			35VF			
				E1	ER1	ET1	E1	ER1	ET1	
1	G2W 002 026	BOX ASSEMBLY		1	1	1	1	1	1	
2	G2W 001 035	CORNER BOX LEFT		1	1	1	1	1	1	
3	G2W 001 000	PANEL ASSEMBLY		1			1			Including No. 4,5,7,9
	G2W 002 000				1		1			
	G2W 003 000					1		1		
4	G2W 004 120	ARM HOLDER (LEFT)		1	1	1	1	1	1	
5	G2W 001 118	CATCH		2	2	2	2	2	2	1 PC/SET
6	G2W 001 023	SCREW CAP		2	2	2	2	2	2	1 PC/SET
7	G2W 002 010	FRONT PANEL		1	1	1	1	1	1	
8	G2W 002 100	AIR FILTER		2	2	2	2	2	2	1 PC/SET
9	G2W 003 120	ARM HOLDER (RIGHT)		1	1	1	1	1	1	
10	G2W 001 033	CORNER BOX RIGHT		1	1	1	1	1	1	
11	G2W 002 115	INSTALLATION PLATE		1	1	1	1	1	1	

1-2. ACCESSORY AND REMOTE CONTROLLER

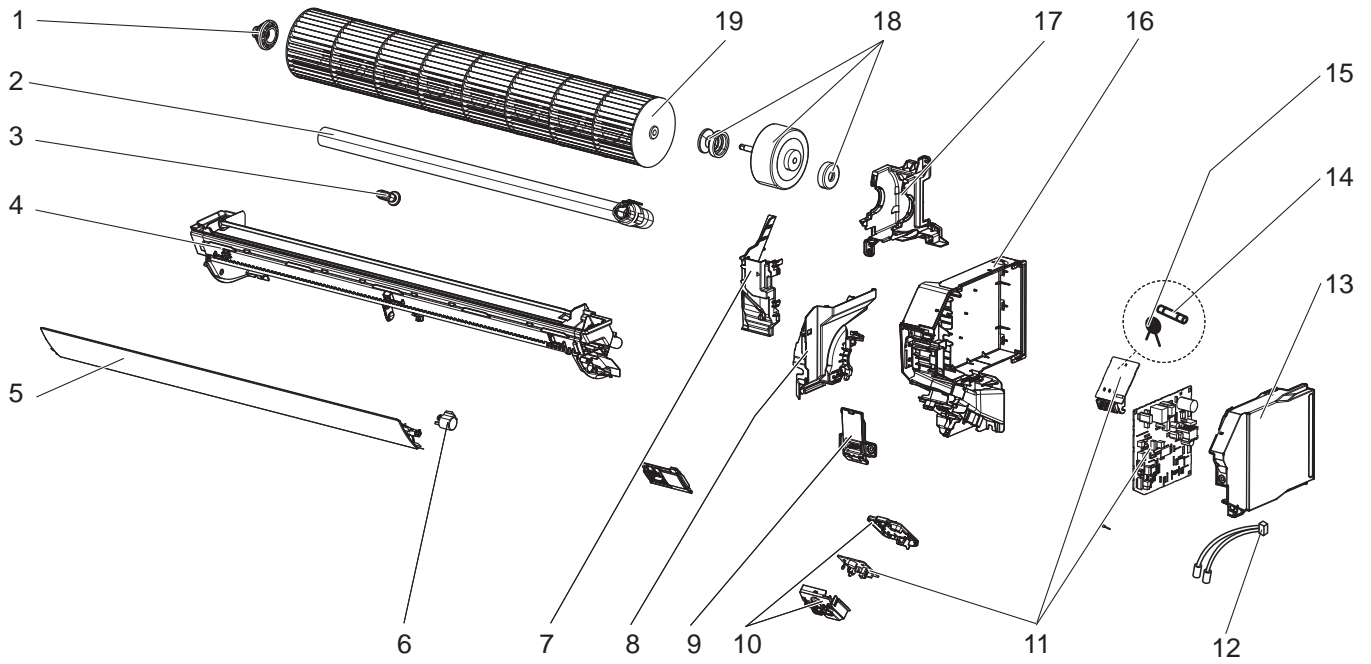
No.	Part No.	Part name	Symbol in Wiring Diagram	Q'ty/unit						Remarks
				MSZ-HR						
				25VF			35VF			
				E1	ER1	ET1	E1	ER1	ET1	
12	G2W 002 400	REMOTE CONTROLLER		1		1	1		1	RH18A
	G2W 003 400				1		1			

1-3. INDOOR UNIT HEAT EXCHANGER

No.	Part No.	Part name	Symbol in Wiring Diagram	Q'ty/unit						Remarks
				MSZ-HR						
				25VF			35VF			
				E1	ER1	ET1	E1	ER1	ET1	
13	G2W 005 600	INDOOR HEAT EXCHANGER		1	1	1				
	G2W 006 600						1	1	1	
14	G2W 001 605	UNION (LIQUID)		1	1	1	1	1	1	ø6.35
15	G2W 002 605	UNION (GAS)		1	1	1	1	1	1	ø9.52

MSZ-HR25VF MSZ-HR35VF

1-4. INDOOR UNIT ELECTRICAL PARTS AND FUNCTIONAL PARTS



1-4. INDOOR UNIT ELECTRICAL PARTS AND FUNCTIONAL PARTS

Part number that is circled is not shown in the illustration.

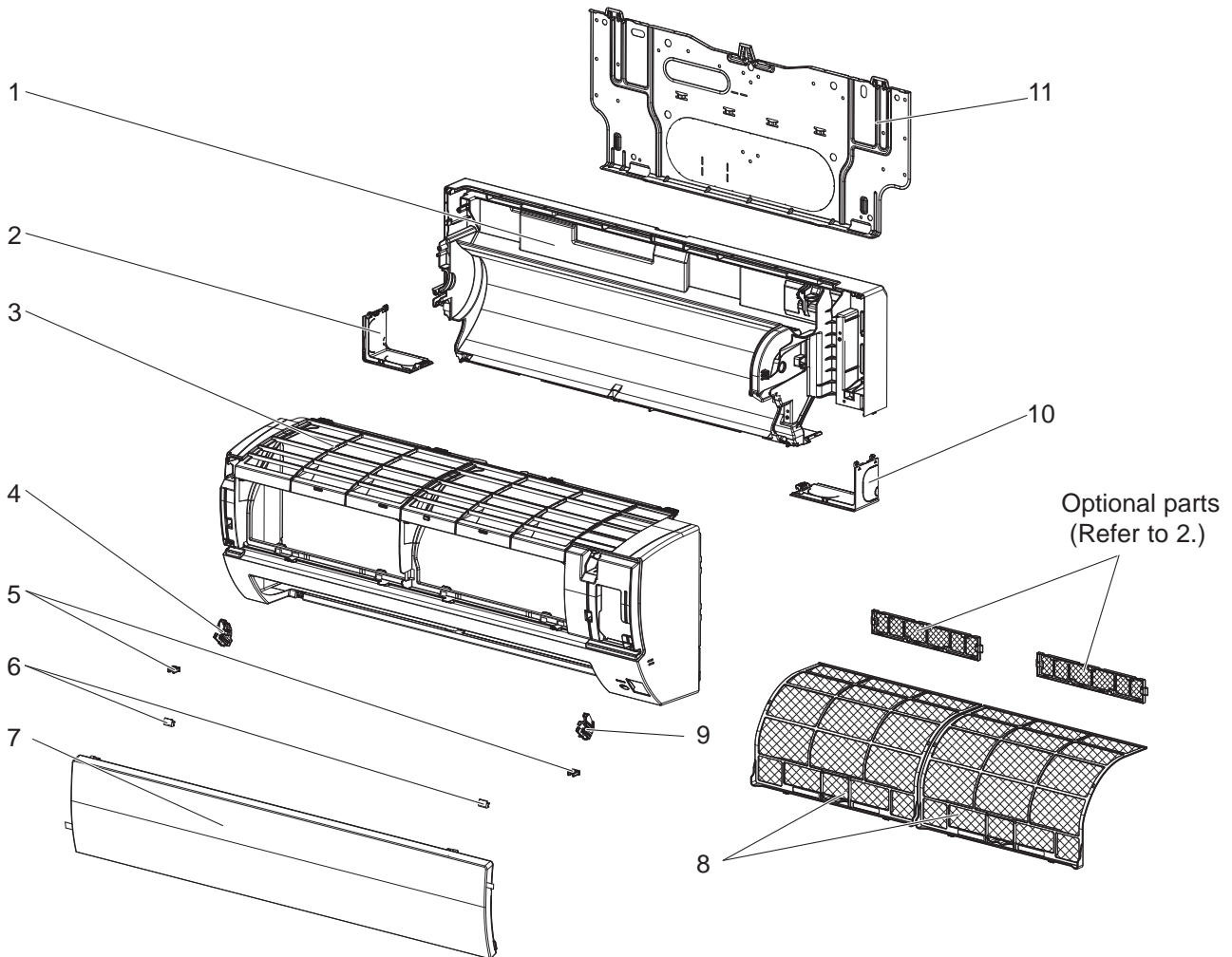
No.	Part No.	Part name	Symbol in Wiring Diagram	Q'ty/unit						Remarks
				MSZ-HR						
				25VF			35VF			
				E1	ER1	ET1	E1	ER1	ET1	
1	G2W 001 520	BEARING MOUNT ASSEMBLY		1	1	1	1	1	1	
2	G2W 001 110	DRAIN HOSE		1	1	1	1	1	1	
3	G2W 001 708	DRAIN CAP		1	1	1	1	1	1	
4	G2W 002 030	NOZZLE ASSEMBLY		1	1	1	1	1	1	
5	G2W 003 017	HORIZONTAL VANE		1	1	1	1	1	1	
6	G2W 003 315	VANE MOTOR	MV	1	1	1	1	1	1	UP & DOWN
7	-	WATER COVER		1	1	1	1	1	1	JQ25A311G02
8	G2W 002 103	MOTOR BAND		1	1	1	1	1	1	
9	-	V.A. CLAMP		1	1	1	1	1	1	DK00G275G02
10	-	DISPLAY P.C. BOARD HOLDER		1	1	1	1	1	1	DY25B881G02
11	G2W 008 410	ELECTRONIC CONTROL P.C. BOARD ※1		1	1	1				
						1	1	1		
12	G2W 003 310	INDOOR COIL THERMISTOR	RT12,RT13	1	1	1				
	G2W 004 310						1	1	1	
13	-	PB-COVER (RIGHT)		1	1	1	1	1	1	DK00G276G02
14	G2W 002 422	FUSE	F11	1	1	1	1	1	1	
15	G2W 001 425	VARISTOR	NR11	1	1	1	1	1	1	
16	-	PB-COVER (LEFT)		1	1	1	1	1	1	DY00C502G04
17	-	MOTOR BED		1	1	1	1	1	1	SQ00G233G04
18	G2W 001 300	INDOOR FAN MOTOR ※2	MF	1	1	1	1	1	1	RC0J30-□□
19	G2W 001 500	LINE FLOW FAN		1	1	1	1	1	1	
⑳	-	LEAD-WIRE ※3		1	1	1	1	1	1	DM00R422G18

※1 Including ROOM TEMPERATURE THERMISTOR (RT11), Terminal P.C. board and power monitor receiver SW P.C. board.

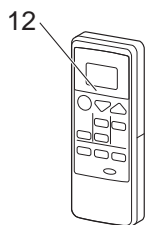
※2 Including FAN MOTOR RUBBER MOUNT (2 PCS/SET)

※3 Between CN151 on ELECTRONIC CONTROL P.C. BOARD and VANE MOTOR

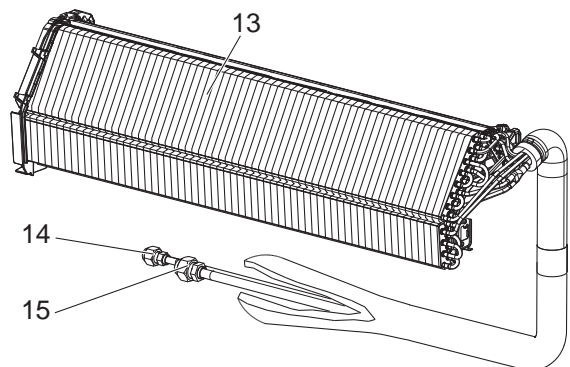
MSZ-HR42VF MSZ-HR50VF
1-5. INDOOR UNIT STRUCTURAL PARTS

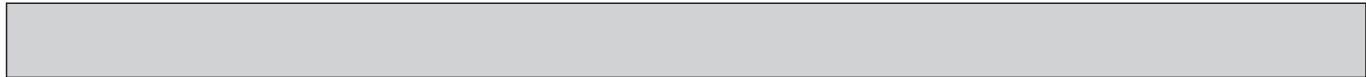


1-6. ACCESSORY AND REMOTE CONTROLLER



1-7. INDOOR UNIT HEAT EXCHANGER





1-5. INDOOR UNIT STRUCTURAL PARTS

No.	Part No.	Part name	Symbol in Wiring Diagram	Q'ty/unit						Remarks
				MSZ-HR						
				42VF			50VF			
				E1	ER1	ET1	E1	ER1	ET1	
1	G2W 003 026	BOX ASSEMBLY		1	1	1	1	1	1	
2	G2W 001 035	CORNER BOX LEFT		1	1	1	1	1	1	
3	G2W 001 000	PANEL ASSEMBLY		1			1			Including No. 4,5,7,9
	G2W 002 000				1		1			
	G2W 003 000					1		1		
4	G2W 004 120	ARM HOLDER (LEFT)		1	1	1	1	1	1	
5	G2W 001 118	CATCH		2	2	2	2	2	2	1 PC/SET
6	G2W 001 023	SCREW CAP		2	2	2	2	2	2	1 PC/SET
7	G2W 002 010	FRONT PANEL		1	1	1	1	1	1	
8	G2W 002 100	AIR FILTER		2	2	2	2	2	2	1 PC/SET
9	G2W 003 120	ARM HOLDER (RIGHT)		1	1	1	1	1	1	
10	G2W 001 033	CORNER BOX RIGHT		1	1	1	1	1	1	
11	G2W 002 115	INSTALLATION PLATE		1	1	1	1	1	1	

1-6. ACCESSORY AND REMOTE CONTROLLER

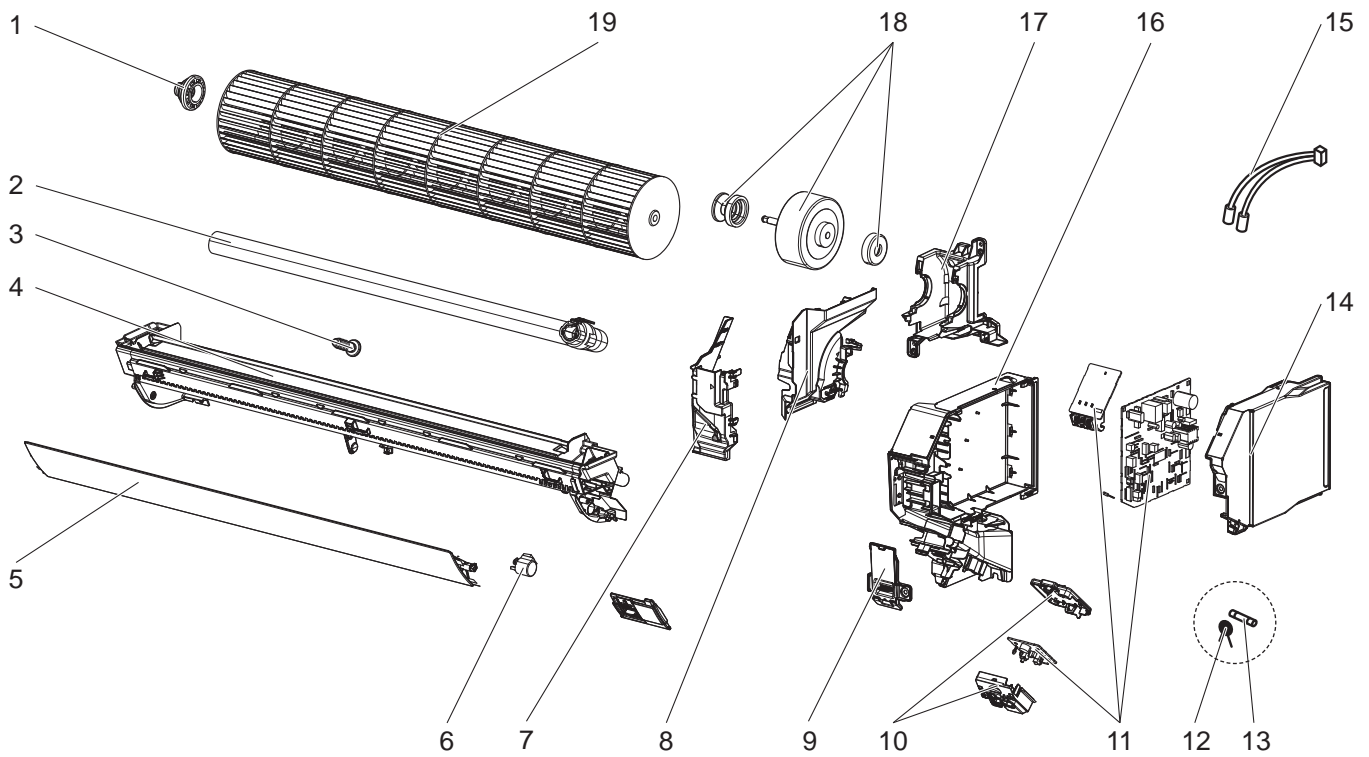
No.	Part No.	Part name	Symbol in Wiring Diagram	Q'ty/unit						Remarks
				MSZ-HR						
				42VF			50VF			
				E1	ER1	ET1	E1	ER1	ET1	
12	G2W 002 400	REMOTE CONTROLLER		1		1	1		1	RH18A
	G2W 003 400				1		1			

1-7. INDOOR UNIT HEAT EXCHANGER

No.	Part No.	Part name	Symbol in Wiring Diagram	Q'ty/unit						Remarks
				MSZ-HR						
				42VF			50VF			
				E1	ER1	ET1	E1	ER1	ET1	
13	G2W 007 600	INDOOR HEAT EXCHANGER		1	1	1	1	1	1	
14	G2W 001 605	UNION (LIQUID)		1	1	1	1	1	1	ø6.35
15	G2W 002 605	UNION (GAS)		1	1	1	1	1	1	ø9.52

MSZ-HR42VF MSZ-HR50VF

1-8. INDOOR UNIT ELECTRICAL PARTS AND FUNCTIONAL PARTS



1-8. INDOOR UNIT ELECTRICAL PARTS AND FUNCTIONAL PARTS

Part number that is circled is not shown in the illustration.

No.	Part No.	Part name	Symbol in Wiring Diagram	Q'ty/unit						Remarks
				MSZ-HR						
				42VF			50VF			
				E1	ER1	ET1	E1	ER1	ET1	
1	G2W 001 520	BEARING MOUNT ASSEMBLY		1	1	1	1	1	1	
2	G2W 001 110	DRAIN HOSE		1	1	1	1	1	1	
3	G2W 001 708	DRAIN CAP		1	1	1	1	1	1	
4	G2W 002 030	NOZZLE ASSEMBLY		1	1	1	1	1	1	
5	G2W 003 017	HORIZONTAL VANE		1	1	1	1	1	1	
6	G2W 003 315	VANE MOTOR	MV	1	1	1	1	1	1	UP & DOWN
7	-	WATER COVER		1	1	1	1	1	1	JQ25A311G02
8	G2W 002 103	MOTOR BAND		1	1	1	1	1	1	
9	-	V.A. CLAMP		1	1	1	1	1	1	DK00G275G02
10	-	DISPLAY P.C. BOARD HOLDER		1	1	1	1	1	1	DY25B881G02
11	G2W 006 410	ELECTRONIC CONTROL P.C. BOARD ※1		1	1	1				
						1	1	1		
12	G2W 001 425	VARISTOR	NR11	1	1	1	1	1	1	
13	G2W 002 422	FUSE	F11	1	1	1	1	1	1	
14	-	PB-COVER (RIGHT)		1	1	1	1	1	1	DK00G276G02
15	G2W 005 310	INDOOR COIL THERMISTOR	RT12,RT13	1	1	1	1	1	1	
16	-	PB-COVER (LEFT)		1	1	1	1	1	1	DY00C502G04
17	-	MOTOR BED		1	1	1	1	1	1	SQ00G233G04
18	G2W 001 300	INDOOR FAN MOTOR ※2	MF	1	1	1	1	1	1	RC0J30-□□
19	G2W 001 500	LINE FLOW FAN		1	1	1	1	1	1	
20	-	LEAD-WIRE ※3		1	1	1	1	1	1	DM00R422G18

※1 Including ROOM TEMPERATURE THERMISTOR (RT11), Terminal P.C. board and power monitor receiver SW P.C. board.

※2 Including FAN MOTOR RUBBER MOUNT (2 PCS/SET)

※3 Between CN151 on ELECTRONIC CONTROL P.C. BOARD and VANE MOTOR

2-1. AIR CLEANING FILTER (SILVER-IONIZED AIR PURIFIER FILTER)

Model	Part No.
MSZ-HR25VF MSZ-HR35VF MSZ-HR42VF MSZ-HR50VF	MAC-2370FT

Every 3 months:

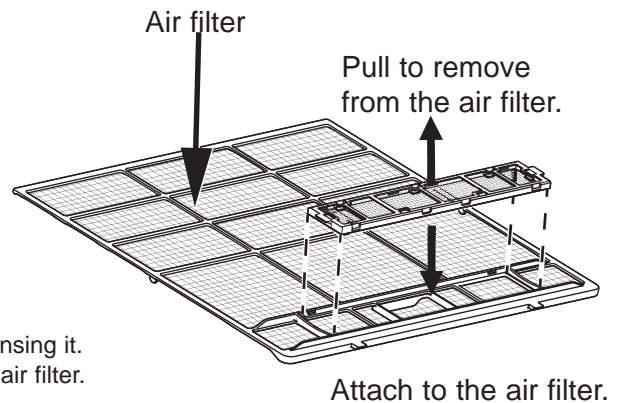
- Remove dirt by a vacuum cleaner.

When dirt cannot be removed by vacuum cleaning:

- Soak the filter and its frame in lukewarm water before rinsing it.
- After washing, dry it well in shade. Install all tabs of the air filter.

Every year:

- Replace it with a new air cleaning filter for best performance.



MITSUBISHI ELECTRIC CORPORATION

HEAD OFFICE: TOKYO BUILDING, 2-7-3, MARUNOUCHI, CHIYODA-KU, TOKYO 100-8310, JAPAN

© Copyright 2018 MITSUBISHI ELECTRIC CORPORATION

Published: Oct. 2018. No. OBB822

Made in Japan

Specifications are subject to change without notice.