

OUTDOOR UNIT

PARTS CATALOG



No. OBB823

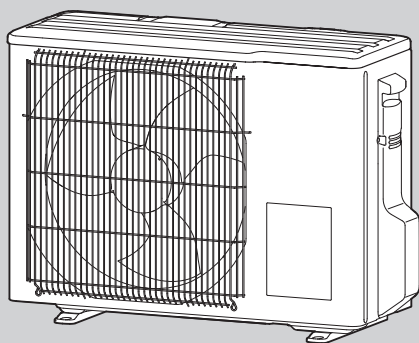
Models

MUZ-HR25VF - **E1**, **ER1**, **ET1**

MUZ-HR35VF - **E1**, **ER1**, **ET1**

MUZ-HR42VF - **E1**, **ER1**, **ET1**

MUZ-HR50VF - **E1**, **ER1**, **ET1**



CONTENTS

1. SERVICE PARTS LIST..... 2

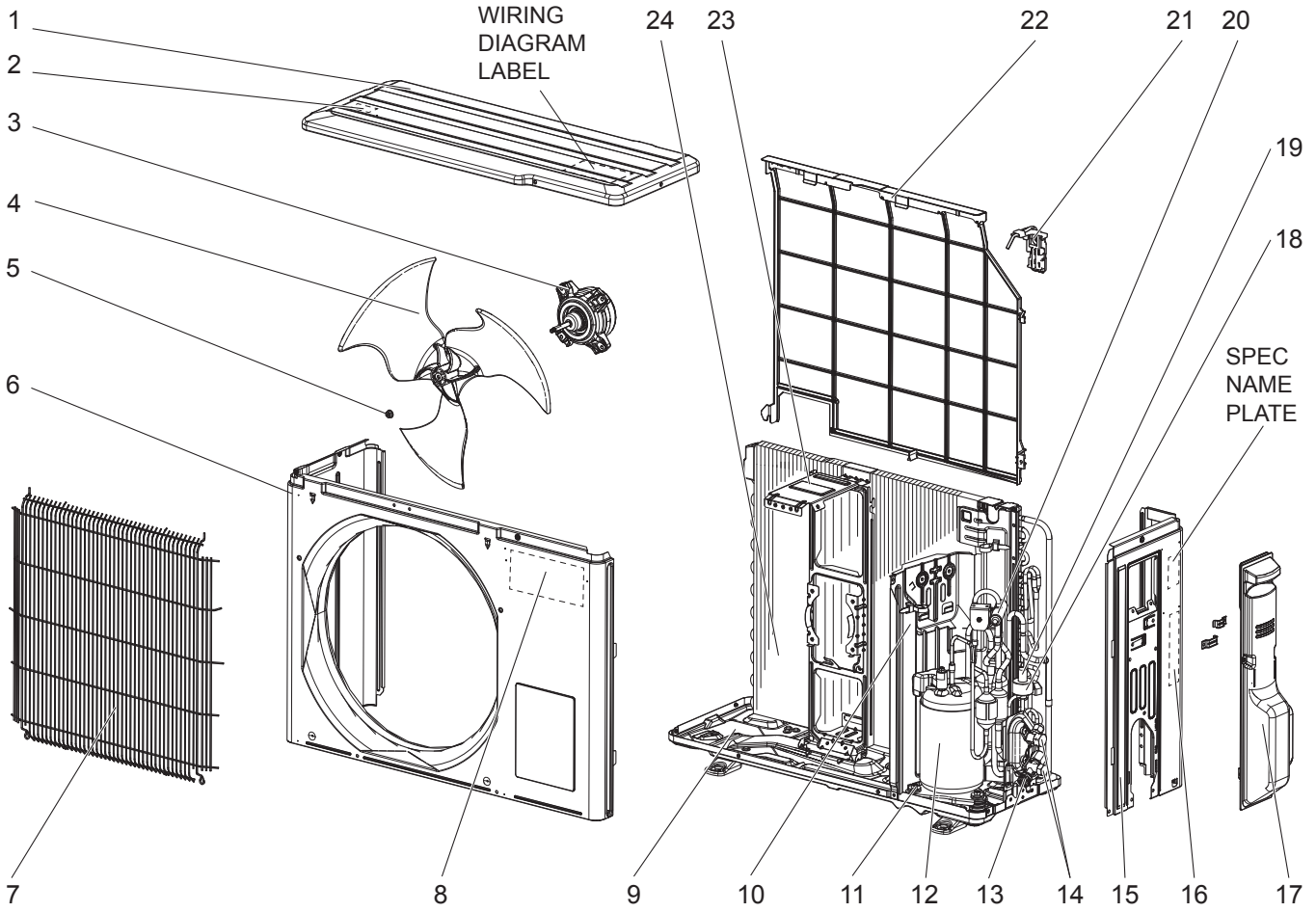
SERVICE MANUAL (OBH823)

1

SERVICE PARTS LIST

MUZ-HR25VF

1-1. OUTDOOR UNIT STRUCTURAL PARTS AND FUNCTIONAL PARTS



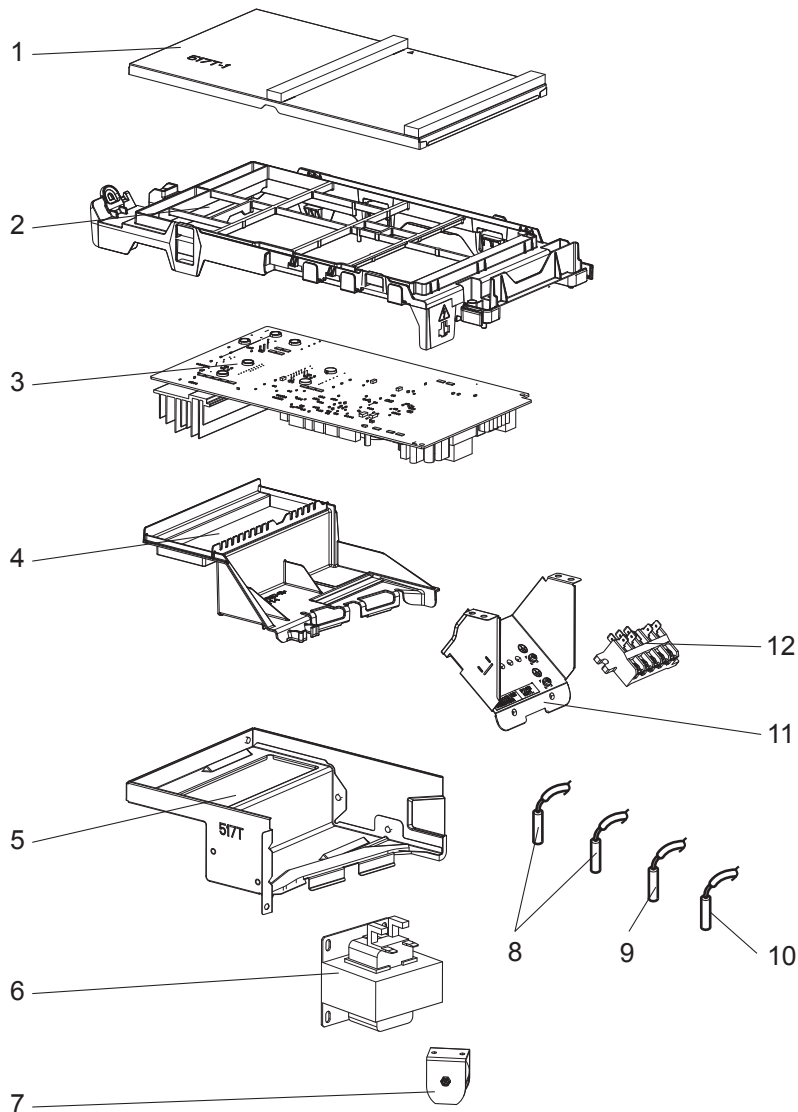
1-1. OUTDOOR UNIT STRUCTURAL PARTS AND FUNCTIONAL PARTS

Part number that is circled is not shown in the illustration.

No.	Part No.	Part Name	Symbol in Wiring Diagram	Q'ty/unit			Remarks
				MUZ-HR			
				25VF- <u>E1</u>	25VF- <u>ER1</u>	25VF- <u>ET1</u>	
1	G2W 002 057	TOP PANEL ASSEMBLY		1	1	1	
2	-	LABEL		1	1	1	JG79R840H02
3	G2W 002 350	OUTDOOR FAN MOTOR	MF	1	1	1	RC0J55-□□
4	G2W 002 550	PROPELLER FAN		1	1	1	
5	G2W 001 753	PROPELLER FAN NUT		1	1	1	
6	G2W 002 050	CABINET		1	1	1	Not including No. 8
7	G2W 002 063	GRILLE		1	1	1	
8	-	TRADE MARK		1	1	1	DK79G220H01
9	G2W 003 055	BASE		1	1	1	
10	G2W 005 150	SEPARATOR		1	1	1	
11	G2W 001 773	COMPRESSOR RUBBER SET		3	3	3	3 RUBBERS/SET
12	G2W 003 650	COMPRESSOR	MC	1	1	1	KVB059FTMMC
13	-	PORT CAP		1	1	1	DQ26T763H04
14	G2W 002 655	STOP VALVE ASSEMBLY		1	1	1	Gas: ø9.52 Liq: ø6.35 Including pipes
15	G2W 002 060	BACK PANEL		1	1	1	Not including SPEC NAME PLATE or No. 16
16	-	LABEL		1	1		DG79T490H01
	-					1	DG79T490H02
17	G2W 002 053	SERVICE PANEL		1	1	1	
18	G2W 002 362	EXPANSION VALVE COIL	LEV	1	1	1	
19	G2W 002 668	EXPANSION VALVE ASSEMBLY		1	1	1	Including capillary tube ø3.0 × ø2.0 × 260
20	G2W 002 665	4-WAY VALVE		1	1	1	
21	-	THERMO HOLDER (AMBIENT)		1	1	1	JQ25A222G01
22	G2W 003 065	CONDENSER WIRE NET		1	1	1	
23	G2W 003 154	MOTOR SUPPORT		1	1	1	
24	G2W 003 660	OUTDOOR HEAT EXCHANGER		1	1	1	
②5	G2W 003 371	COMPRESSOR LEAD WIRE ASSEMBLY		1	1	1	

MUZ-HR25VF

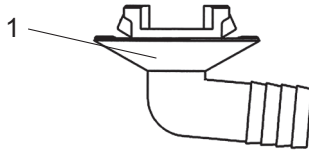
1-2. OUTDOOR UNIT ELECTRICAL PARTS



No.	Part No.	Part Name	Symbol in Wiring Diagram	Q'ty/unit			Remarks
				MUZ-HR			
				25VF- <u>E1</u>	25VF- <u>ER1</u>	25VF- <u>ET1</u>	
1	-	P.C. BOARD COVER		1	1	1	DY02A874G01, SQ33C889H24 (2 PCS)
2	-	P.C. BOARD SUPPORT		1	1	1	DY25A872G01
3	G2W 007 460	INVERTER P.C. BOARD		1	1	1	Including heat sink and RT64
4	-	HEAT SINK HOLDER ASSEMBLY		1	1	1	DY25A873G02
5	-	HEAT SINK SUPPORT ASSEMBLY		1	1	1	DY00B913G02
6	G2W 001 359	REACTOR	L61	1	1	1	
7	G2W 002 365	R.V. COIL	21S4	1	1	1	
8	G2W 002 353	THERMISTOR SET	RT61, RT62	1	1	1	DEFROST, DISCHARGE
9	G2W 001 357	OUTDOOR HEAT EXCHANGER THERMISTOR	RT68	1	1	1	
10	G2W 002 355	AMBIENT TEMPERATURE THERMISTOR	RT65	1	1	1	
11	-	TERMINAL BLOCK SUPPORT		1	1	1	DY00B917G02
12	G2W 001 373	TERMINAL BLOCK	TB1	1	1	1	5 P(S1,S2, S3, L, N)



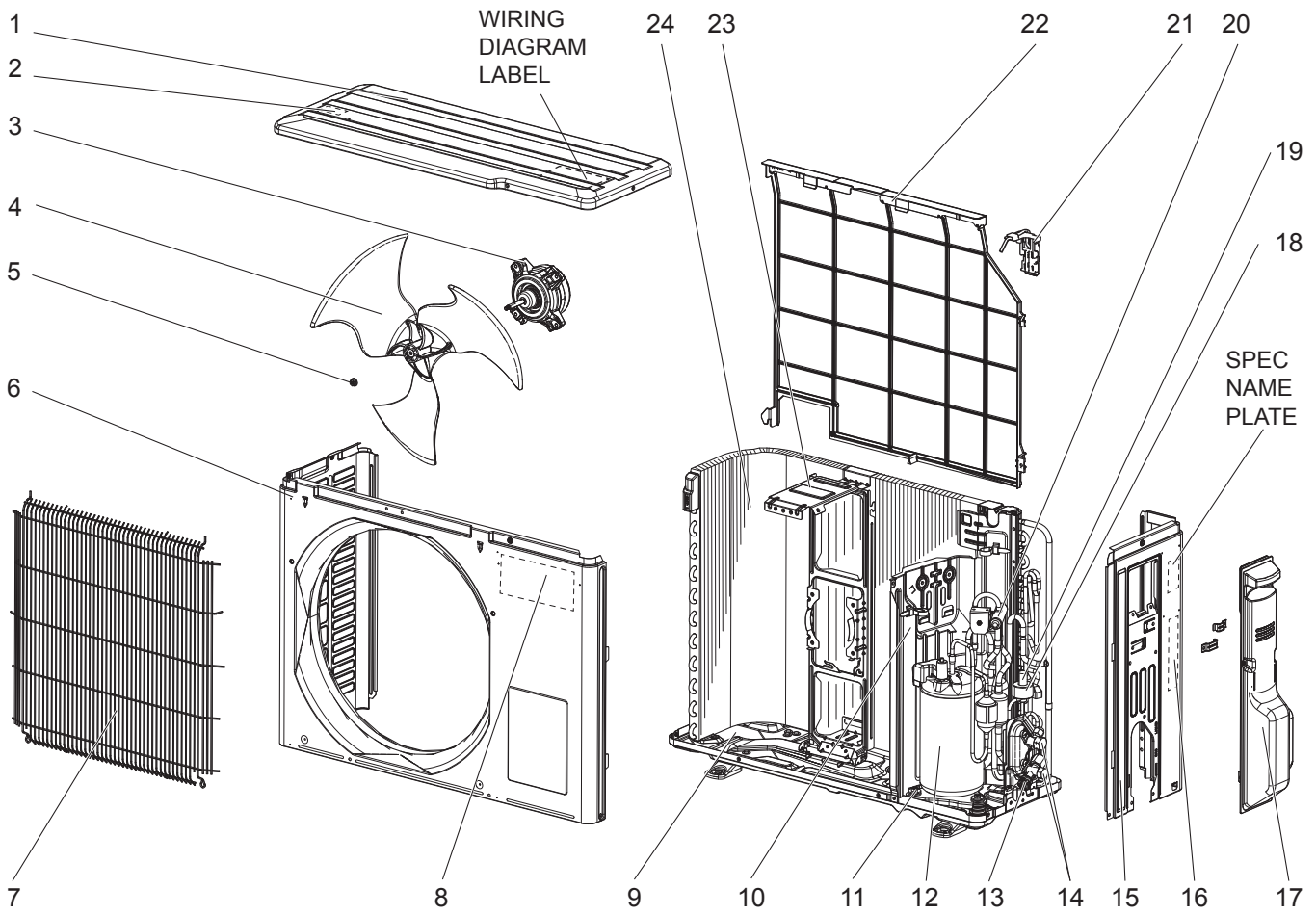
MUZ-HR25VF
1-3. DRAIN SOCKET



No.	Part No.	Part Name	Symbol in Wiring Diagram	Q'ty/unit			Remarks
				MUZ-HR			
				25VF- E1	25VF- ER1	25VF- ET1	
1	G2W 001 765	DRAIN SOCKET		1	1	1	

MUZ-HR35VF

1-4. OUTDOOR UNIT STRUCTURAL PARTS AND FUNCTIONAL PARTS



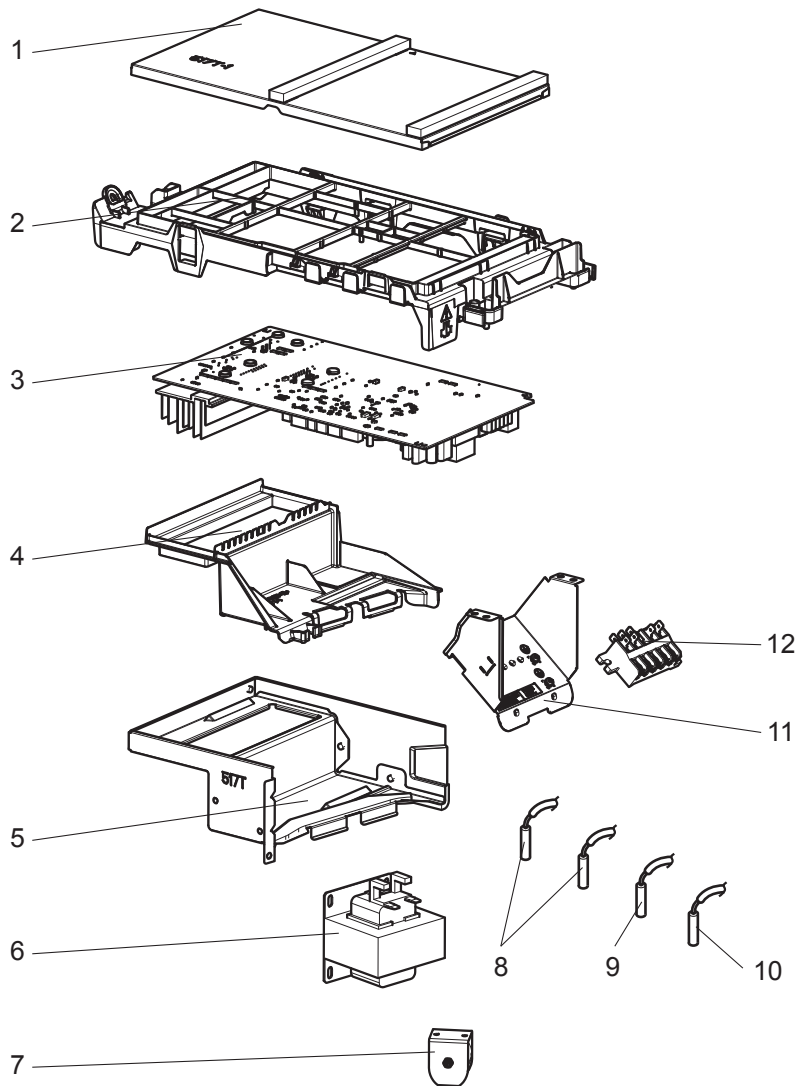
1-4. OUTDOOR UNIT STRUCTURAL PARTS AND FUNCTIONAL PARTS

Part number that is circled is not shown in the illustration.

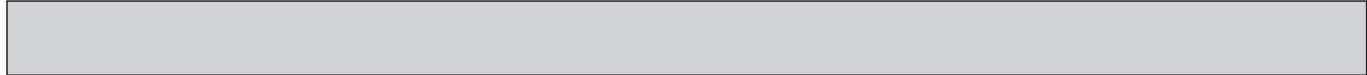
No.	Part No.	Part Name	Symbol in Wiring Diagram	Q'ty/unit			Remarks
				MUZ-HR			
				35VF- <u>E1</u>	35VF- <u>ER1</u>	35VF- <u>ET1</u>	
1	G2W 002 057	TOP PANEL ASSEMBLY		1	1	1	
2	-	LABEL		1	1	1	JG79R840H02
3	G2W 002 350	OUTDOOR FAN MOTOR	MF	1	1	1	RC0J55-□□
4	G2W 002 550	PROPELLER FAN		1	1	1	
5	G2W 001 753	PROPELLER FAN NUT		1	1	1	
6	G2W 003 050	CABINET		1	1	1	Not including No. 8
7	G2W 002 063	GRILLE		1	1	1	
8	-	TRADE MARK		1	1	1	DK79G220H01
9	G2W 003 055	BASE ASSEMBLY		1	1	1	
10	G2W 005 150	SEPARATOR		1	1	1	
11	G2W 001 773	COMPRESSOR RUBBER SET		3	3	3	3 RUBBERS/SET
12	G2W 004 650	COMPRESSOR	MC	1	1	1	KVB073FUXMC
13	-	PORT CAP		1	1	1	DQ26T763H04
14	G2W 002 655	STOP VALVE ASSEMBLY		1	1	1	Gas: ø9.52 Liq: ø6.35 Including pipes
15	G2W 002 060	BACK PANEL		1	1	1	Not including SPEC NAME PLATE or No. 16
16	-	LABEL		1	1		DG79T490H01
	-					1	DG79T490H02
17	G2W 002 053	SERVICE PANEL		1	1	1	
18	G2W 002 362	EXPANSION VALVE COIL	LEV	1	1	1	
19	G2W 002 668	EXPANSION VALVE ASSEMBLY		1	1	1	Including capillary tube ø3.0 × ø2.0 × 260
20	G2W 002 665	4-WAY VALVE		1	1	1	
21	-	THERMO HOLDER (AMBIENT)		1	1	1	JQ25A222G01
22	G2W 003 065	CONDENSER WIRE NET		1	1	1	
23	G2W 003 154	MOTOR SUPPORT		1	1	1	
24	G2W 004 660	OUTDOOR HEAT EXCHANGER		1	1	1	
②5	G2W 003 371	COMPRESSOR LEAD WIRE ASSEMBLY		1	1	1	

MUZ-HR35VF

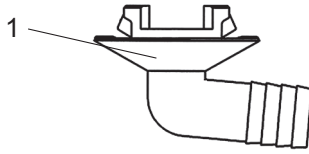
1-5. OUTDOOR UNIT ELECTRICAL PARTS



No.	Part No.	Part Name	Symbol in Wiring Diagram	Q'ty/unit			Remarks
				MUZ-HR			
				35VF- <u>E1</u>	35VF- <u>ER1</u>	35VF- <u>ET1</u>	
1	-	P.C. BOARD COVER		1	1	1	DY02A874G01, SQ33C889H24 (2 PCS)
2	-	P.C. BOARD SUPPORT		1	1	1	DY25A872G01
3	G2W 008 460	INVERTER P.C. BOARD		1	1	1	Including heat sink and RT64
4	-	HEAT SINK HOLDER ASSEMBLY		1	1	1	DY25A873G02
5	-	HEAT SINK SUPPORT ASSEMBLY		1	1	1	DY00B913G02
6	G2W 001 359	REACTOR	L61	1	1	1	
7	G2W 002 365	R.V. COIL	21S4	1	1	1	
8	G2W 002 353	THERMISTOR SET	RT61, RT62	1	1	1	DEFROST, DISCHARGE
9	G2W 001 357	OUTDOOR HEAT EXCHANGER THERMISTOR	RT68	1	1	1	
10	G2W 002 355	AMBIENT TEMPERATURE THERMISTOR	RT65	1	1	1	
11	-	TERMINAL BLOCK SUPPORT		1	1	1	DY00B917G02
12	G2W 001 373	TERMINAL BLOCK	TB1	1	1	1	5 P(S1,S2, S3, L, N)



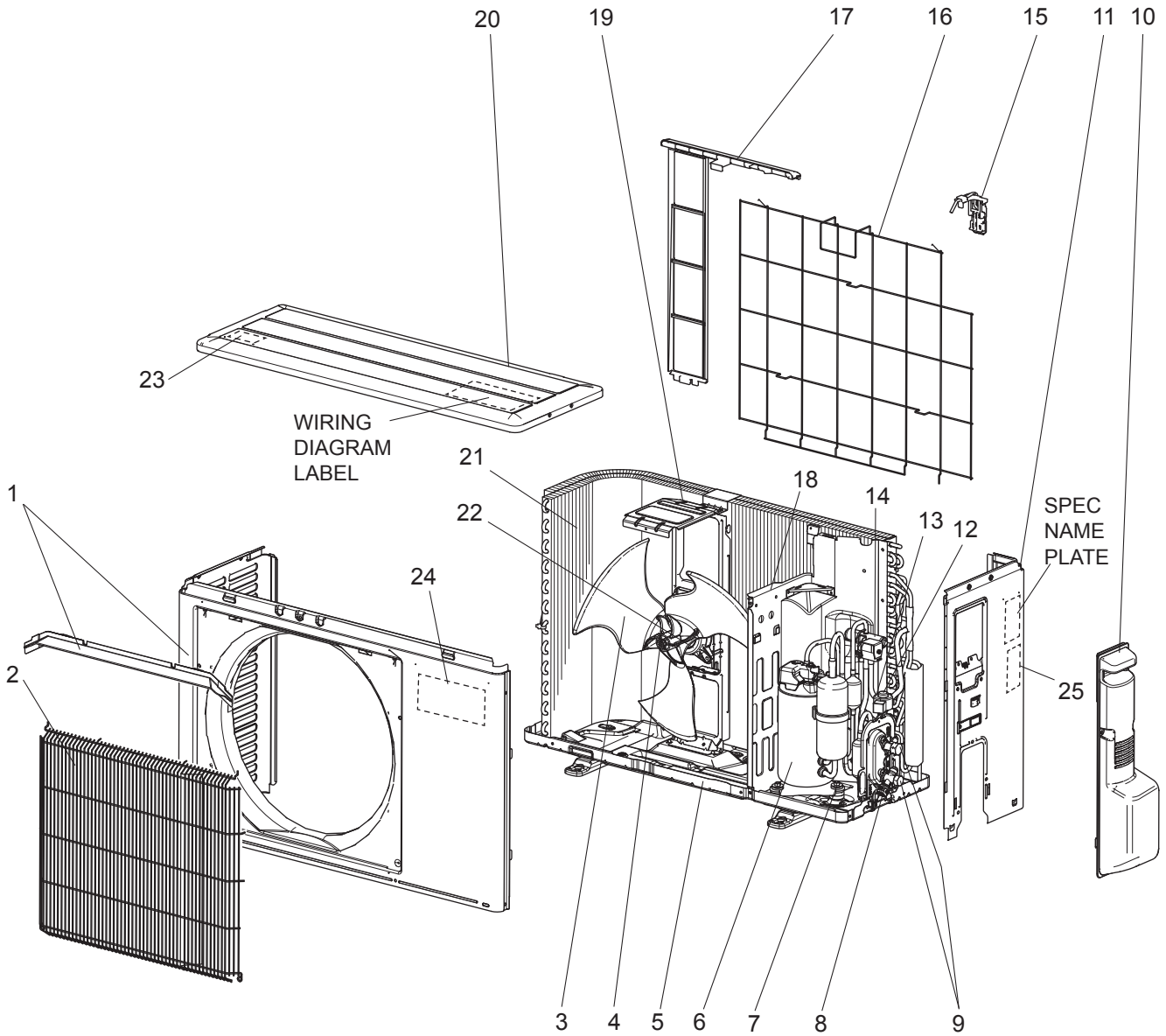
MUZ-HR35VF
1-6. DRAIN SOCKET



No.	Part No.	Part Name	Symbol in Wiring Diagram	Q'ty/unit			Remarks
				MUZ-HR			
				35VF- E1	35VF- ER1	35VF- ET1	
1	G2W 001 765	DRAIN SOCKET		1	1	1	

MUZ-HR42VF MUZ-HR50VF

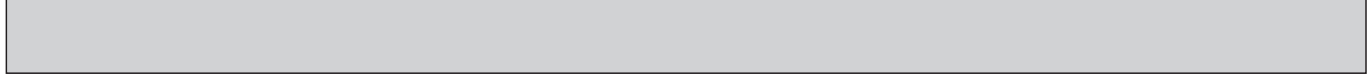
1-7. OUTDOOR UNIT STRUCTURAL PARTS AND FUNCTIONAL PARTS



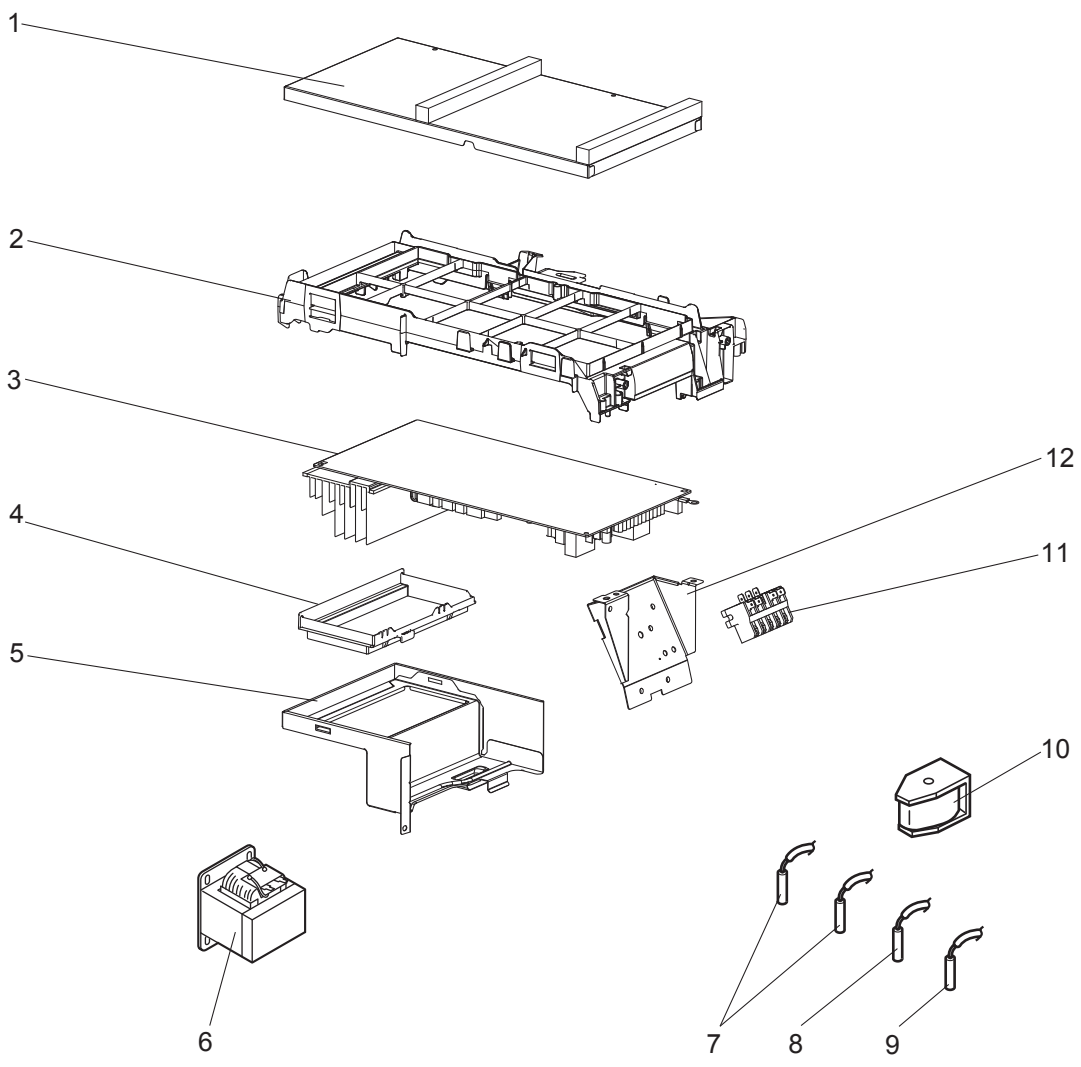
1-7. OUTDOOR UNIT STRUCTURAL PARTS AND FUNCTIONAL PARTS

Part numbers that are circled are not shown in the illustration.

No.	RoHS	Part No.	Part Name	Symbol in Wiring Diagram	Q'ty/unit						Remarks
					MUZ-HR						
					42VF-			50VF-			
					E1	ER1	ET1	E1	ER1	ET1	
1	G	G2W 001 050	CABINET		1	1	1	1	1	1	Including ice guard, Not including No. 24
2	G	G2W 001 063	WIRE GRILLE		1	1	1	1	1	1	
3	G	G2W 001 550	PROPELLER FAN		1	1	1	1	1	1	
4	G	G2W 001 753	PROPELLER FAN NUT		1	1	1	1	1	1	
5	G	G2W 001 055	BASE ASSEMBLY		1	1	1	1	1	1	
6	G	G2W 005 650	COMPRESSOR	MC	1	1	1				KVB092FYAMC
	G	G2W 002 650						1	1	1	SVB130FBBMC
7	G	G2W 001 773	COMPRESSOR RUBBER SET		3	3	3				3 RUBBERS/SET
	G	G2W 002 773					3	3	3		
8	G	–	PORT CAP		1	1	1	1	1	1	DQ26T763H04
9	G	G2W 001 655	STOP VALVE ASSEMBLY		1	1	1	1	1	1	Gas: ø9.52 Liq: ø6.35 Including pipes
10	G	G2W 001 053	SERVICE PANEL ASSEMBLY		1	1	1	1	1	1	
11	G	G2W 001 060	BACK PANEL ASSEMBLY		1	1	1	1	1	1	Not including SPEC NAME PLATE or No. 25
12	G	G2W 001 668	EXPANSION VALVE ASSEMBLY		1	1	1	1	1	1	Including capillary tube ø4.0×ø2.4×240
13	G	G2W 001 362	EXPANSION VALVE COIL	LEV	1	1	1	1	1	1	
14	G	G2W 001 665	4-WAY VALVE		1	1	1	1	1	1	
15	G	–	THERMO HOLDER (AMBIENT)		1	1	1	1	1	1	DK25A972G04
16	G	G2W 002 067	CONDENSER WIRE NET ASSEMBLY		1	1	1	1	1	1	
17	G	G2W 001 065	CONDENSER NET		1	1	1	1	1	1	
18	G	G2W 003 150	SEPARATOR		1	1	1	1	1	1	
19	G	G2W 002 154	MOTOR SUPPORT		1	1	1	1	1	1	
20	G	G2W 001 057	TOP PANEL ASSEMBLY		1	1	1	1	1	1	Not including WIRING DIAGRAM LABEL or No. 23
21	G	G2W 002 660	OUTDOOR HEAT EXCHANGER		1	1	1	1	1	1	Including No. 28
22	G	G2W 002 350	OUTDOOR FAN MOTOR	MF	1	1	1	1	1	1	RC0J55-□□
23	G	–	LABEL		1	1	1	1	1	1	JG79R840H02
24	G	–	TRADE MARK		1	1	1	1	1	1	DK79G220H01
25	G	–	LABEL		1	1		1	1		DG79T490H01
	G	–					1			1	DG79T490H02
26	G	G2W 001 371	COMPRESSOR LEAD WIRE ASSEMBLY		1	1	1				
	G	G2W 002 371						1	1	1	
27	G	G2W 001 672	CT_PIPE ASSEMBLY		1	1	1	1	1	1	Including capillary tube ø3.0×ø1.8×600 (×2)
28	G	G2W 001 765	DRAIN SOCKET		1	1	1	1	1	1	



MUZ-HR42VF MUZ-HR50VF
1-8. OUTDOOR UNIT ELECTRICAL PARTS





1-8. OUTDOOR UNIT ELECTRICAL PARTS

No.	Part No.	Part Name	Symbol in Wiring Diagram	Q'ty/unit						Remarks
				MUZ-HR						
				42VF-			50VF-			
				E1	ER1	ET1	E1	ER1	ET1	
1	-	P.C. BOARD COVER		1	1	1	1	1	1	DY02B869G01, SQ33C889H05 (2 PCS)
2	-	P.C. BOARD SUPPORT		1	1	1	1	1	1	DY25A804G02
3	G2W 009 460	INVERTER P.C. BOARD ASSEMBLY		1	1	1				
	G2W 010 460						1	1	1	
4	-	HEAT SINK HOLDER ASSEMBLY		1	1	1	1	1	1	DY00C493G02
5	-	HEAT SINK SUPPORT ASSEMBLY		1	1	1	1	1	1	DY00B872G03
6	G2W 002 359	REACTOR	L61	1	1	1	1	1	1	
7	G2W 001 353	THERMISTOR SET	RT61, RT62	1	1	1	1	1	1	DEFROST, DISCHARGE
8	G2W 001 355	AMBIENT TEMPERATURE THERMISTOR	RT65	1	1	1	1	1	1	
9	G2W 001 357	OUTDOOR HEAT EXCHANGER TEMPERATURE THERMISTOR	RT68	1	1	1	1	1	1	
10	G2W 001 365	R.V. COIL ASSEMBLY	21S4	1	1	1	1	1	1	
11	G2W 001 373	TERMINAL BLOCK	TB1	1	1	1	1	1	1	5P (S1, S2, S3, L, N)
12	-	TERMINAL BLOCK SUPPORT		1	1	1	1	1	1	DY00B879G03

mitsubishi electric corporation

HEAD OFFICE: TOKYO BUILDING, 2-7-3, MARUNOUCHI, CHIYODA-KU, TOKYO 100-8310, JAPAN

© Copyright 2018 MITSUBISHI ELECTRIC CORPORATION

Published: Oct. 2018. No. OBB823

Made in Japan

Specifications are subject to change without notice.