

INDOOR UNIT

PARTS CATALOG

No. OBB831

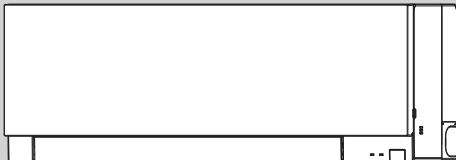
Models

- MSZ-EF18VGW/B/S** - E1
- MSZ-EF22VGW/B/S** - E1, ET1
- MSZ-EF25VGW/B/S** - E1, ET1
- MSZ-EF35VGW/B/S** - E1, ET1
- MSZ-EF42VGW/B/S** - E1, ET1
- MSZ-EF50VGW/B/S** - E1, ET1

CONTENTS

- 1. SERVICE PARTS LIST..... 2
- 2. OPTIONAL PARTS.....11

SERVICE MANUAL (OBH831)



MSZ-EF·VGW
MSZ-EF·VGB
MSZ-EF·VGS

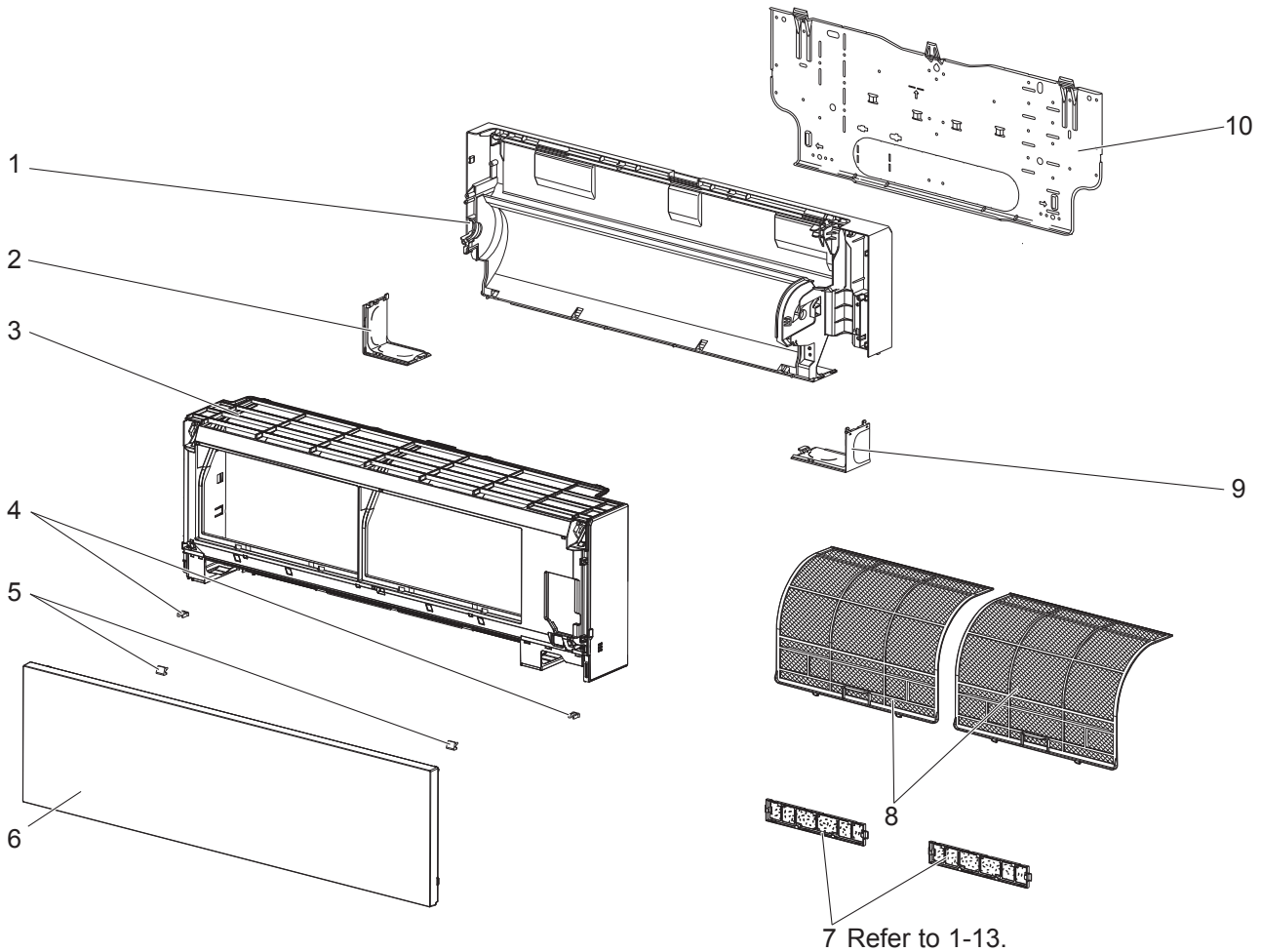


1

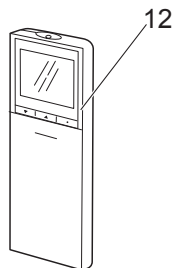
SERVICE PARTS LIST

MSZ-EF18VGW - E1 MSZ-EF18VGB - E1 MSZ-EF18VGS - E1
MSZ-EF22VGW - E1 MSZ-EF22VGB - E1 MSZ-EF22VGS - E1
MSZ-EF25VGW - E1 MSZ-EF25VGB - E1 MSZ-EF25VGS - E1
MSZ-EF35VGW - E1 MSZ-EF35VGB - E1 MSZ-EF35VGS - E1
MSZ-EF42VGW - E1 MSZ-EF42VGB - E1 MSZ-EF42VGS - E1
MSZ-EF50VGW - E1 MSZ-EF50VGB - E1 MSZ-EF50VGS - E1

1-1. INDOOR UNIT STRUCTURAL PARTS



1-2. ACCESSORY AND REMOTE CONTROLLER



1-1. INDOOR UNIT STRUCTURAL PARTS

Part number that is circled is not shown in the illustration.

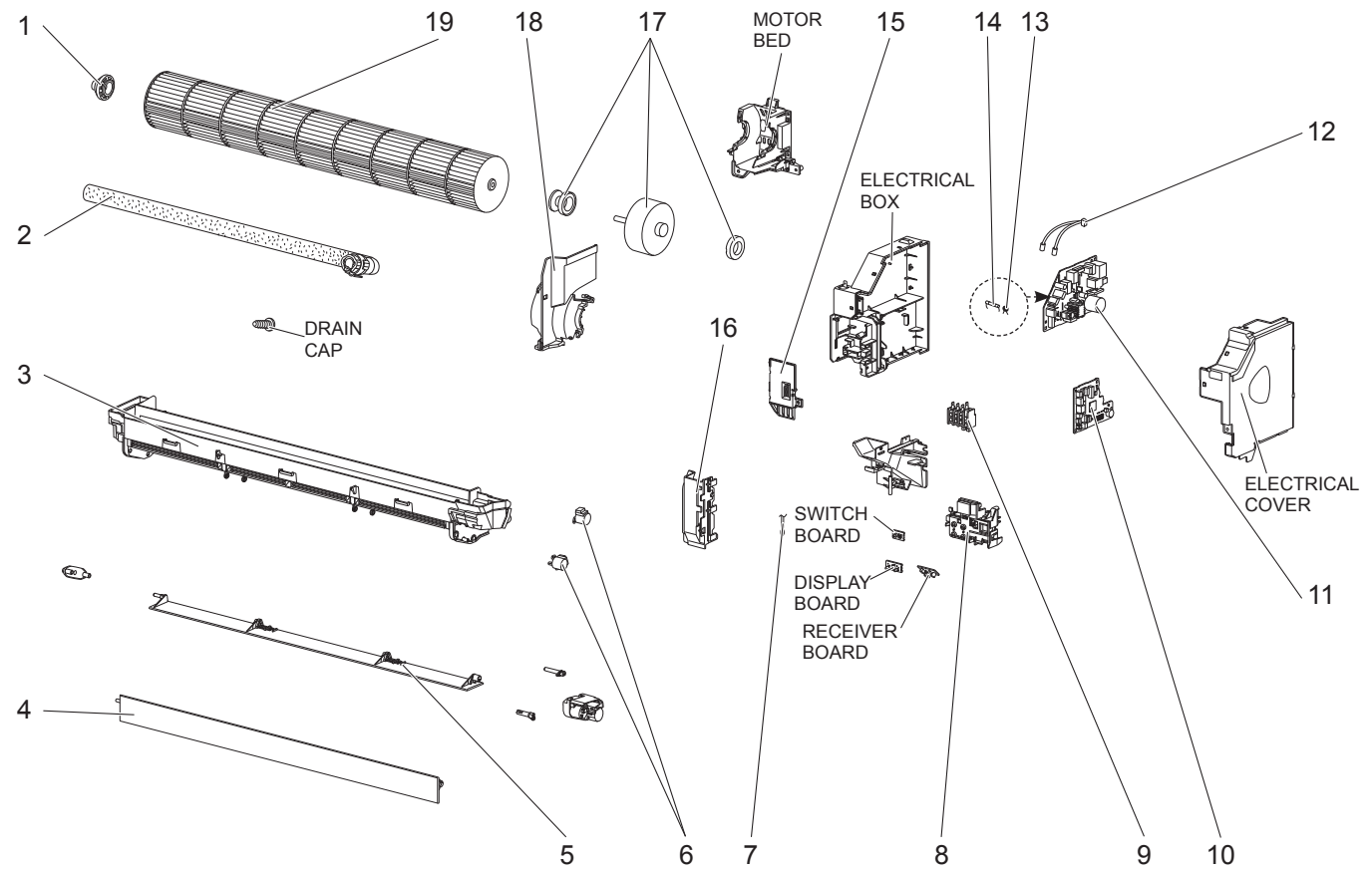
No.	Part No.	Part name	Symbol in Wiring Diagram	Q'ty/unit															Remarks				
				MSZ-EF																			
				18			22			25			35			42				50			
VGW -E1	VGB -E1	VGS -E1	VGW -E1	VGB -E1	VGS -E1	VGW -E1	VGB -E1	VGS -E1	VGW -E1	VGB -E1	VGS -E1	VGW -E1	VGB -E1	VGS -E1	VGW -E1	VGB -E1	VGS -E1						
1	E22 16H 234	BOX ASSEMBLY		1			1			1			1			1			1				
	E22 G21 234				1			1			1			1			1						
	E22 G26 234					1			1			1			1			1					
2	E22 16H 976	CORNER BOX LEFT		1			1			1			1			1			1				
	E22 G21 976				1			1			1			1			1						
	E22 G26 976					1			1			1			1			1					
3	E22 16H 000	PANEL ASSEMBLY		1			1			1			1			1			1			Includes No. 4, 6	
	E22 14H 000				1			1			1			1			1			1			Includes No. 4, 6
	E22 15H 000					1			1			1			1			1			1		
4	E22 F95 142	CATCH		2	2	2	2	2	2	2	2	2	2	2	2	2	2	2	2	2	2	2 PCS/SET	
5	E22 16H 067	SCREW CAP		2			2			2			2			2			2			2 PCS/SET	
	E22 G21 067				2			2			2			2			2			2			2 PCS/SET
	E22 G26 067					2			2			2			2			2			2		
6	E22 16H 010	FRONT PANEL		1			1			1			1			1			1				
	E22 T25 010				1			1			1			1			1			1			
	E22 T29 010					1			1			1			1			1			1		
7	—	AIR CLEANING FILTER (SILVER-IONIZED AIR PURIFIER FILTER)		2	2	2	2	2	2	2	2	2	2	2	2	2	2	2	2	2	2	1 PC/SET	
8	E22 16H 100	AIR FILTER (AIR PURIFYING FILTER)		2	2	2	2	2	2	2	2	2	2	2	2	2	2	2	2	2	2	1 PC/SET	
9	E22 16H 975	CORNER BOX RIGHT		1			1			1			1			1			1				
	E22 G21 975				1			1			1			1			1			1			
	E22 G26 975					1			1			1			1			1			1		
10	E22 F95 970	INSTALLATION PLATE		1	1	1	1	1	1	1	1	1	1	1	1	1	1	1	1	1	1		
⑪	—	SOFT DRY CLOTH			1			1			1			1			1			1		MAC- 1001CL-E	

1-2. ACCESSORY AND REMOTE CONTROLLER

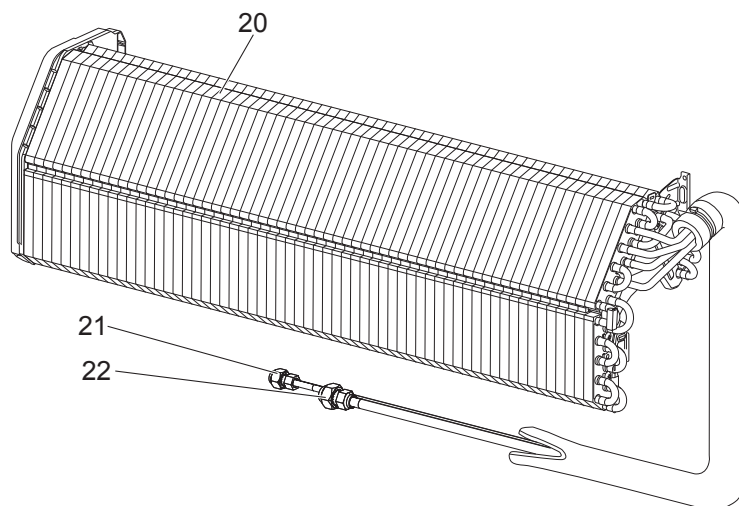
No.	Part No.	Part name	Symbol in Wiring Diagram	Q'ty/unit															Remarks			
				MSZ-EF																		
				18			22			25			35			42				50		
VGW -E1	VGB -E1	VGS -E1	VGW -E1	VGB -E1	VGS -E1	VGW -E1	VGB -E1	VGS -E1	VGW -E1	VGB -E1	VGS -E1	VGW -E1	VGB -E1	VGS -E1	VGW -E1	VGB -E1	VGS -E1					
12	E22 16H 426	REMOTE CONTROLLER		1			1			1			1			1			1			SG19A
	E22 14H 426				1	1		1	1		1	1		1	1		1	1		1	1	

MSZ-EF18VGW - E1 MSZ-EF18VGB - E1 MSZ-EF18VGS - E1
MSZ-EF22VGW - E1 MSZ-EF22VGB - E1 MSZ-EF22VGS - E1
MSZ-EF25VGW - E1 MSZ-EF25VGB - E1 MSZ-EF25VGS - E1
MSZ-EF35VGW - E1 MSZ-EF35VGB - E1 MSZ-EF35VGS - E1
MSZ-EF42VGW - E1 MSZ-EF42VGB - E1 MSZ-EF42VGS - E1
MSZ-EF50VGW - E1 MSZ-EF50VGB - E1 MSZ-EF50VGS - E1

1-3. INDOOR UNIT ELECTRICAL PARTS AND FUNCTIONAL PARTS



1-4. INDOOR UNIT HEAT EXCHANGER



1-3. INDOOR UNIT ELECTRICAL PARTS AND FUNCTIONAL PARTS

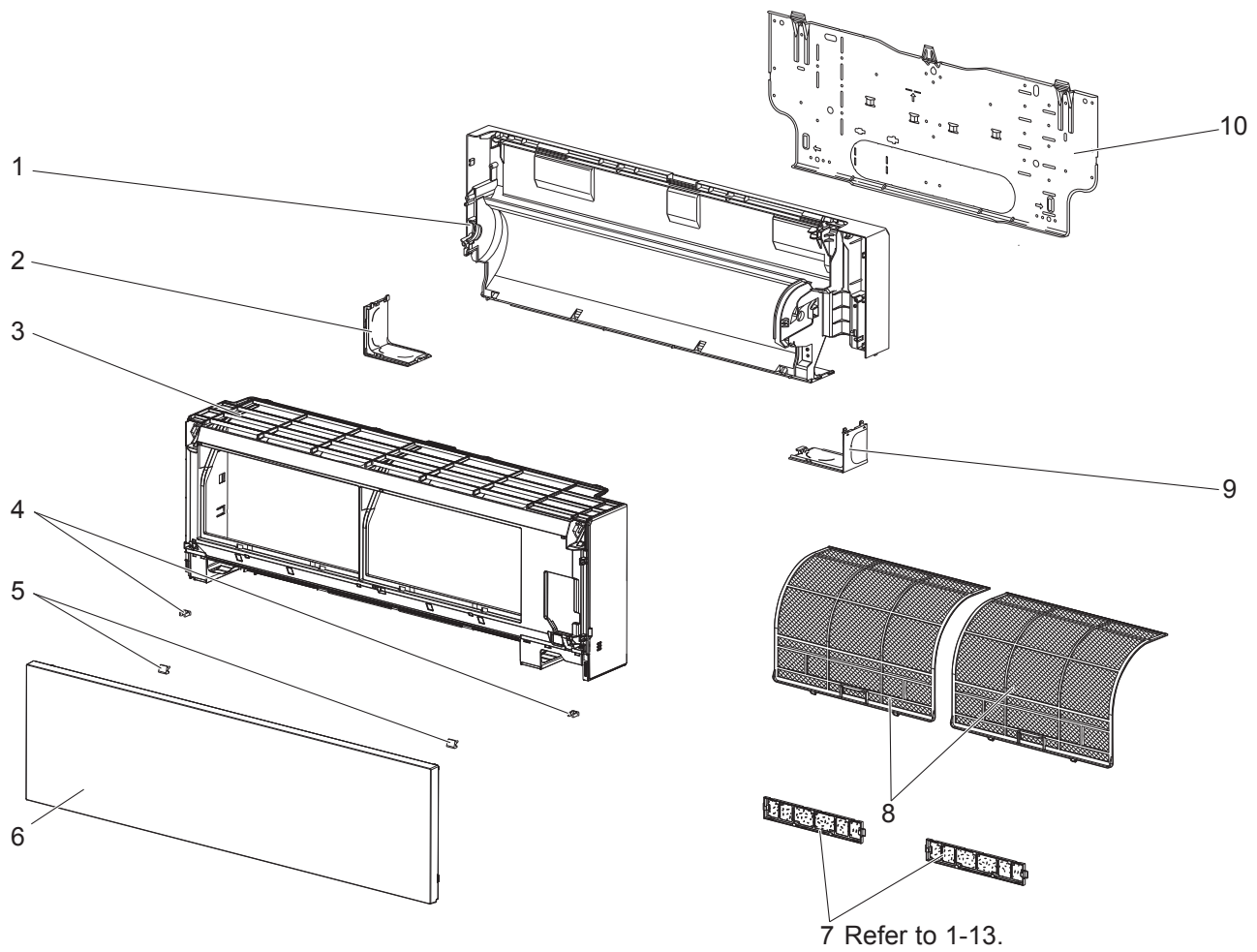
No.	Part No.	Part name	Symbol in Wiring Diagram	Q'ty/unit																		Remarks
				MSZ-EF																		
				18			22			25			35			42			50			
VGW	VGB	VGS	VGW	VGB	VGS	VGW	VGB	VGS	VGW	VGB	VGS	VGW	VGB	VGS	VGW	VGB	VGS					
·E1	·E1	·E1	·E1	·E1	·E1	·E1	·E1	·E1	·E1	·E1	·E1	·E1	·E1	·E1	·E1	·E1	·E1					
1	E22 A89 509	BEARING MOUNT		1	1	1	1	1	1	1	1	1	1	1	1	1	1	1	Includes Sleeve bearing			
2	E22 P72 702	DRAIN HOSE		1	1	1	1	1	1	1	1	1	1	1	1	1	1	1				
3	E22 16H 235	NOZZLE ASSEMBLY		1			1			1			1			1						
	E22 G21 235				1			1			1			1			1					
	E22 G26 235					1			1			1			1			1				
4	E22 16H 040	VANE UPPER		1			1			1			1			1						
	E22 G21 040				1			1			1			1			1					
	E22 G26 040					1			1			1			1			1				
5	E22 16H 041	VANE LOWER		1			1			1			1			1						
	E22 G21 041				1			1			1			1			1					
	E22 G26 041					1			1			1			1			1				
6	E22 A89 303	VANE MOTOR	MV	2	2	2	2	2	2	2	2	2	2	2	2	2	2	2	UP & DOWN, 1 PC/SET			
7	E22 F95 308	ROOM TEMPERATURE THERMISTOR	RT11	1	1	1	1	1	1	1	1	1	1	1	1	1	1	1				
8	E22 F95 095	DISPLAY P.C. BOARD HOLDER		1	1	1	1	1	1	1	1	1	1	1	1	1	1	1				
9	E22 T21 375	TERMINAL BLOCK	TB	1	1	1	1	1	1	1	1	1	1	1	1	1	1	1				
10	E22 17H 452	ELECTRONIC CONTROL P.C. BOARD		1	1	1	1	1	1										Includes RECEIVER BOARD, DISPLAY BOARD and SWITCH BOARD.			
	E22 22H 452									1	1	1										
	E22 25H 452												1	1	1							
	E22 28H 452															1	1	1				
	E22 31H 452																	1				
11	E22 17H 440	POWER P.C. BOARD		1	1	1	1	1	1	1	1	1	1	1	1	1	1	1				
12	E22 F95 307	INDOOR COIL THERMISTOR	RT12,RT13	1	1	1	1	1	1	1	1	1	1	1	1	1	1	1				
13	E22 B75 385	VARISTOR	NR11	1	1	1	1	1	1	1	1	1	1	1	1	1	1	1				
14	E22 A49 382	FUSE	F11	1	1	1	1	1	1	1	1	1	1	1	1	1	1	1	T3.15AL250V			
15	E22 F95 784	V.A. CLAMP		1	1	1	1	1	1	1	1	1	1	1	1	1	1	1				
16	E22 F95 541	WATER CUT		1	1	1	1	1	1	1	1	1	1	1	1	1	1	1				
17	E22 16H 300	INDOOR FAN MOTOR	MF	1	1	1	1	1	1	1	1	1	1	1	1	1	1	1	RC0J40-□□ Includes FAN MOTOR RUBBER MOUNT (2 PCS/SET)			
18	E22 F95 333	MOTOR BAND		1	1	1	1	1	1	1	1	1	1	1	1	1	1	1				
19	E22 F95 302	LINE FLOW FAN		1	1	1	1	1	1	1	1	1	1	1	1	1	1	1				

1-4. INDOOR UNIT HEAT EXCHANGER

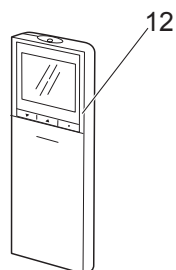
No.	Part No.	Part name	Symbol in Wiring Diagram	Q'ty/unit																		Remarks
				MSZ-EF																		
				18			22			25			35			42			50			
VGW	VGB	VGS	VGW	VGB	VGS	VGW	VGB	VGS	VGW	VGB	VGS	VGW	VGB	VGS	VGW	VGB	VGS					
·E1	·E1	·E1	·E1	·E1	·E1	·E1	·E1	·E1	·E1	·E1	·E1	·E1	·E1	·E1	·E1	·E1	·E1					
20	E22 F95 620	INDOOR HEAT EXCHANGER		1	1	1	1	1	1	1	1	1	1	1	1	1	1	1				
21	E22 151 667	UNION (LIQUID)		1	1	1	1	1	1	1	1	1	1	1	1	1	1	1	ø6.35			
22	E22 815 666	UNION (GAS)		1	1	1	1	1	1	1	1	1	1	1	1	1	1	1	ø9.52			

MSZ-EF22VGW -[ET1] MSZ-EF22VGB -[ET1] MSZ-EF22VGS -[ET1]
MSZ-EF25VGW -[ET1] MSZ-EF25VGB -[ET1] MSZ-EF25VGS -[ET1]
MSZ-EF35VGW -[ET1] MSZ-EF35VGB -[ET1] MSZ-EF35VGS -[ET1]
MSZ-EF42VGW -[ET1] MSZ-EF42VGB -[ET1] MSZ-EF42VGS -[ET1]
MSZ-EF50VGW -[ET1] MSZ-EF50VGB -[ET1] MSZ-EF50VGS -[ET1]

1-5. INDOOR UNIT STRUCTURAL PARTS



1-6. ACCESSORY AND REMOTE CONTROLLER



1-5. INDOOR UNIT STRUCTURAL PARTS

Part numbers that is circled is not shown in the illustration.

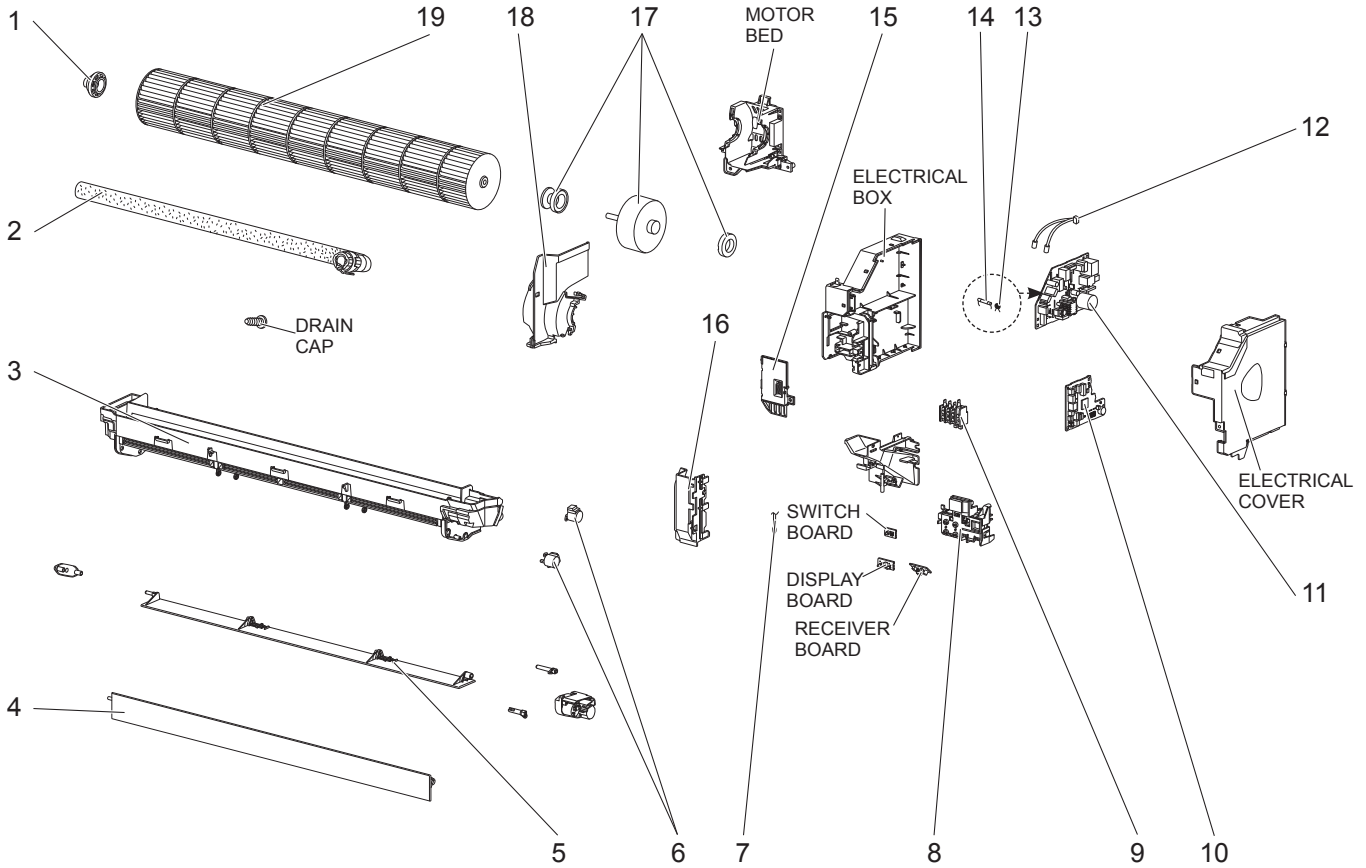
No.	Part No.	Part name	Symbol in Wiring Diagram	Q'ty/unit															Remarks
				MSZ-EF															
				22			25			35			42			50			
VGW	VGB	VGS	VGW	VGB	VGS	VGW	VGB	VGS	VGW	VGB	VGS	VGW	VGB	VGS					
ET1			ET1			ET1			ET1			ET1							
1	E22 16H 234	BOX ASSEMBLY		1		1			1			1			1				
	E22 G21 234			1			1			1			1			1			
	E22 G26 234					1			1			1			1			1	
2	E22 16H 976	CORNER BOX LEFT		1		1			1			1			1				
	E22 G21 976			1			1			1			1			1			
	E22 G26 976					1			1			1			1			1	
3	E22 34H 000	PANEL ASSEMBLY		1		1			1			1			1			Includes No. 4, 6	
	E22 32H 000			1			1			1			1			1		Includes No. 4, 6	
	E22 33H 000					1			1			1			1			1	Includes No. 4, 6
4	E22 F95 142	CATCH		2	2	2	2	2	2	2	2	2	2	2	2	2	2	2	2 PCS/SET
5	E22 16H 067	SCREW CAP		2			2			2			2			2			2 PCS/SET
	E22 G21 067			2			2			2			2			2			2 PCS/SET
	E22 G26 067					2			2			2			2			2	2 PCS/SET
6	E22 16H 010	FRONT PANEL		1		1			1			1			1				
	E22 T25 010			1			1			1			1			1			
	E22 T29 010					1			1			1			1			1	
7	—	AIR CLEANING FILTER (SILVER-IONIZED AIR PURIFIER FILTER)		2	2	2	2	2	2	2	2	2	2	2	2	2	2	2	1 PC/SET
8	E22 16H 100	AIR FILTER (AIR PURIFYING FILTER)		2	2	2	2	2	2	2	2	2	2	2	2	2	2	2	1 PC/SET
9	E22 16H 975	CORNER BOX RIGHT		1		1			1			1			1				
	E22 G21 975			1			1			1			1			1			
	E22 G26 975					1			1			1			1			1	
10	E22 F95 970	INSTALLATION PLATE		1	1	1	1	1	1	1	1	1	1	1	1	1	1	1	
⑪	—	SOFT DRY CLOTH				1			1			1			1			MAC-1001CL-E	

1-6. ACCESSORY AND REMOTE CONTROLLER

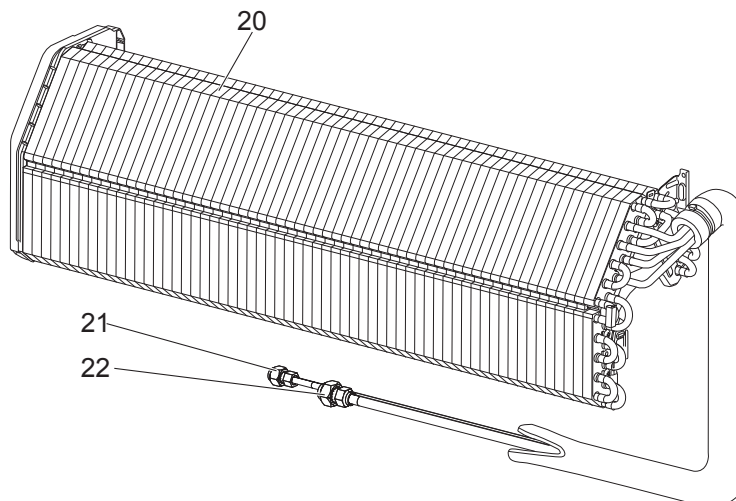
No.	Part No.	Part name	Symbol in Wiring Diagram	Q'ty/unit															Remarks
				MSZ-EF															
				22			25			35			42			50			
VGW	VGB	VGS	VGW	VGB	VGS	VGW	VGB	VGS	VGW	VGB	VGS	VGW	VGB	VGS					
ET1			ET1			ET1			ET1			ET1							
12	E22 16H 426	REMOTE CONTROLLER		1		1			1			1			1			SG19A	
	E22 14H 426			1	1		1	1		1	1		1	1		1	1	SG19B	

MSZ-EF22VGW -[ET1] MSZ-EF22VGB -[ET1] MSZ-EF22VGS -[ET1]
MSZ-EF25VGW -[ET1] MSZ-EF25VGB -[ET1] MSZ-EF25VGS -[ET1]
MSZ-EF35VGW -[ET1] MSZ-EF35VGB -[ET1] MSZ-EF35VGS -[ET1]
MSZ-EF42VGW -[ET1] MSZ-EF42VGB -[ET1] MSZ-EF42VGS -[ET1]
MSZ-EF50VGW -[ET1] MSZ-EF50VGB -[ET1] MSZ-EF50VGS -[ET1]

1-7. INDOOR UNIT ELECTRICAL PARTS AND FUNCTIONAL PARTS



1-8. INDOOR UNIT HEAT EXCHANGER



1-7. INDOOR UNIT ELECTRICAL PARTS AND FUNCTIONAL PARTS

No.	Part No.	Part name	Symbol in Wiring Diagram	Q'ty/unit															Remarks
				MSZ-EF															
				22			25			35			42			50			
				VGW	VGB	VGS	VGW	VGB	VGS	VGW	VGB	VGS	VGW	VGB	VGS	VGW	VGB	VGS	
1	E22 A89 509	BEARING MOUNT		1	1	1	1	1	1	1	1	1	1	1	1	1	1	1	Includes Sleeve bearing
2	E22 P72 702	DRAIN HOSE		1	1	1	1	1	1	1	1	1	1	1	1	1	1	1	
3	E22 16H 235	NOZZLE ASSEMBLY		1			1			1			1			1			
	E22 G21 235				1			1			1			1			1		
	E22 G26 235					1			1			1			1			1	
4	E22 16H 040	VANE UPPER		1			1			1			1			1			
	E22 G21 040				1			1			1			1			1		
	E22 G26 040					1			1			1			1			1	
5	E22 16H 041	VANE LOWER		1			1			1			1			1			
	E22 G21 041				1			1			1			1			1		
	E22 G26 041					1			1			1			1			1	
6	E22 A89 303	VANE MOTOR	MV	2	2	2	2	2	2	2	2	2	2	2	2	2	2	2	UP & DOWN, 1 PC/SET
7	E22 F95 308	ROOM TEMPERATURE THERMISTOR	RT11	1	1	1	1	1	1	1	1	1	1	1	1	1	1	1	
8	E22 F95 095	DISPLAY P.C. BOARD HOLDER		1	1	1	1	1	1	1	1	1	1	1	1	1	1	1	
9	E22 T21 375	TERMINAL BLOCK	TB	1	1	1	1	1	1	1	1	1	1	1	1	1	1	1	
10	E22 17H 452	ELECTRONIC CONTROL P.C. BOARD		1	1	1													Includes RECEIVER BOARD, DISPLAY BOARD and SWITCH BOARD.
	E22 22H 452					1	1	1											
	E22 25H 452								1	1	1								
	E22 28H 452											1	1	1					
	E22 31H 452														1	1	1		
11	E22 17H 440	POWER P.C. BOARD		1	1	1	1	1	1	1	1	1	1	1	1	1	1	1	
12	E22 F95 307	INDOOR COIL THERMISTOR	RT12,RT13	1	1	1	1	1	1	1	1	1	1	1	1	1	1	1	
13	E22 B75 385	VARIATOR	NR11	1	1	1	1	1	1	1	1	1	1	1	1	1	1	1	
14	E22 A49 382	FUSE	F11	1	1	1	1	1	1	1	1	1	1	1	1	1	1	1	T3.15AL250V
15	E22 F95 784	V.A. CLAMP		1	1	1	1	1	1	1	1	1	1	1	1	1	1	1	
16	E22 F95 541	WATER CUT		1	1	1	1	1	1	1	1	1	1	1	1	1	1	1	
17	E22 16H 300	INDOOR FAN MOTOR	MF	1	1	1	1	1	1	1	1	1	1	1	1	1	1	1	RC0J40-□□ Includes FAN MOTOR RUBBER MOUNT (2 PCS/SET)
18	E22 F95 333	MOTOR BAND		1	1	1	1	1	1	1	1	1	1	1	1	1	1	1	
19	E22 F95 302	LINE FLOW FAN		1	1	1	1	1	1	1	1	1	1	1	1	1	1	1	

1-8. INDOOR UNIT HEAT EXCHANGER

No.	Part No.	Part name	Symbol in Wiring Diagram	Q'ty/unit															Remarks
				MSZ-EF															
				22			25			35			42			50			
				VGW	VGB	VGS	VGW	VGB	VGS	VGW	VGB	VGS	VGW	VGB	VGS	VGW	VGB	VGS	
20	E22 F95 620	INDOOR HEAT EXCHANGER		1	1	1	1	1	1	1	1	1	1	1	1	1	1	1	
21	E22 151 667	UNION (LIQUID)		1	1	1	1	1	1	1	1	1	1	1	1	1	1	1	ø6.35
22	E22 815 666	UNION (GAS)		1	1	1	1	1	1	1	1	1	1	1	1	1	1	1	ø9.52

1-9. AIR CLEANING FILTER (Silver-ionized air purifier filter)

Every 3 months:

- Remove dirt by a vacuum cleaner.

When dirt cannot be removed by vacuum cleaning:

- Soak the filter and its frame in lukewarm water before rinsing it.
- After washing, dry it well in shade. Install all tabs of the air filter.

Every year:

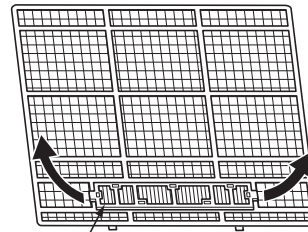
- Replace it with a new air cleaning filter for best performance.

NOTE 1: Clean the filters regularly for best performance and to reduce power consumption.

NOTE 2: Dirty filters cause condensation in the air conditioner which will contribute to the growth of fungi such as mold. It is therefore recommended to clean air filters every 2 weeks.

Model		Part No.
MSZ-EF18VGW	MSZ-EF35VGW	MAC-2370FT-E
MSZ-EF18VGB	MSZ-EF35VGB	
MSZ-EF18VGS	MSZ-EF35VGS	
MSZ-EF22VGW	MSZ-EF42VGW	
MSZ-EF22VGB	MSZ-EF42VGB	
MSZ-EF22VGS	MSZ-EF42VGS	
MSZ-EF25VGW	MSZ-EF50VGW	
MSZ-EF25VGB	MSZ-EF50VGB	
MSZ-EF25VGS	MSZ-EF50VGS	

Pull to remove from the air filter



Air cleaning filter
(Silver-ionized air purifier filter)

2**OPTIONAL PARTS****2-1. SOFT DRY CLOTH**

- Clean the panel with the soft dry cloth when it is dirty.

Model		Part No.
MSZ-EF18VGW	MSZ-EF35VGW	MAC-1001CL-E
MSZ-EF18VGS	MSZ-EF35VGS	
MSZ-EF22VGW	MSZ-EF42VGW	
MSZ-EF22VGS	MSZ-EF42VGS	
MSZ-EF25VGW	MSZ-EF50VGW	
MSZ-EF25VGS	MSZ-EF50VGS	

mitsubishi electric corporation

HEAD OFFICE: TOKYO BUILDING, 2-7-3, MARUNOUCHI, CHIYODA-KU, TOKYO 100-8310, JAPAN

© Copyright 2019 MITSUBISHI ELECTRIC CORPORATION

Published: Mar. 2019. No. OBB831

Made in Japan

Specifications are subject to change without notice.