

OUTDOOR UNIT

No. OBB832

PARTS CATALOG

Models

MUZ-EF25VG - E1, ET1

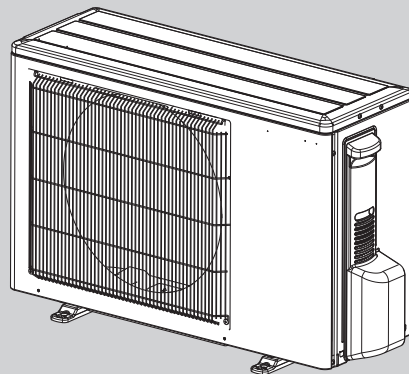
MUZ-EF35VG - E1, ET1

MUZ-EF42VG - E1, ET1

MUZ-EF50VG - E1, ET1

MUZ-EF25VGH - E1

MUZ-EF35VGH - E1



**MUZ-EF25VG
MUZ-EF35VG
MUZ-EF42VG**

CONTENTS

1. SERVICE PARTS LIST..... 2

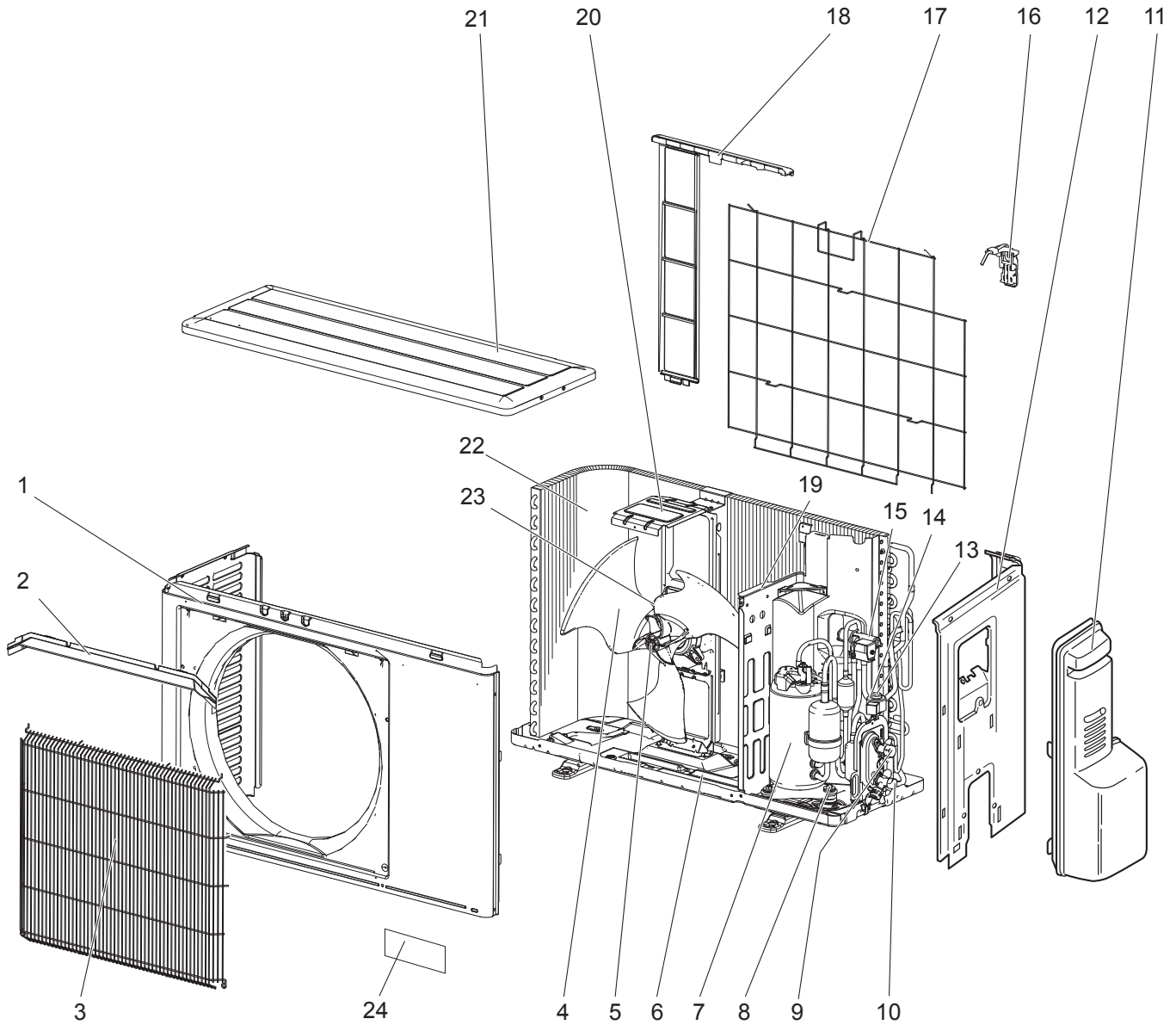
SERVICE MANUAL (OBH832)

1

SERVICE PARTS LIST

MUZ-EF25VG - **E1**, **ET1** MUZ-EF35VG - **E1**, **ET1**

1-1. OUTDOOR UNIT STRUCTURAL PARTS AND FUNCTIONAL PARTS

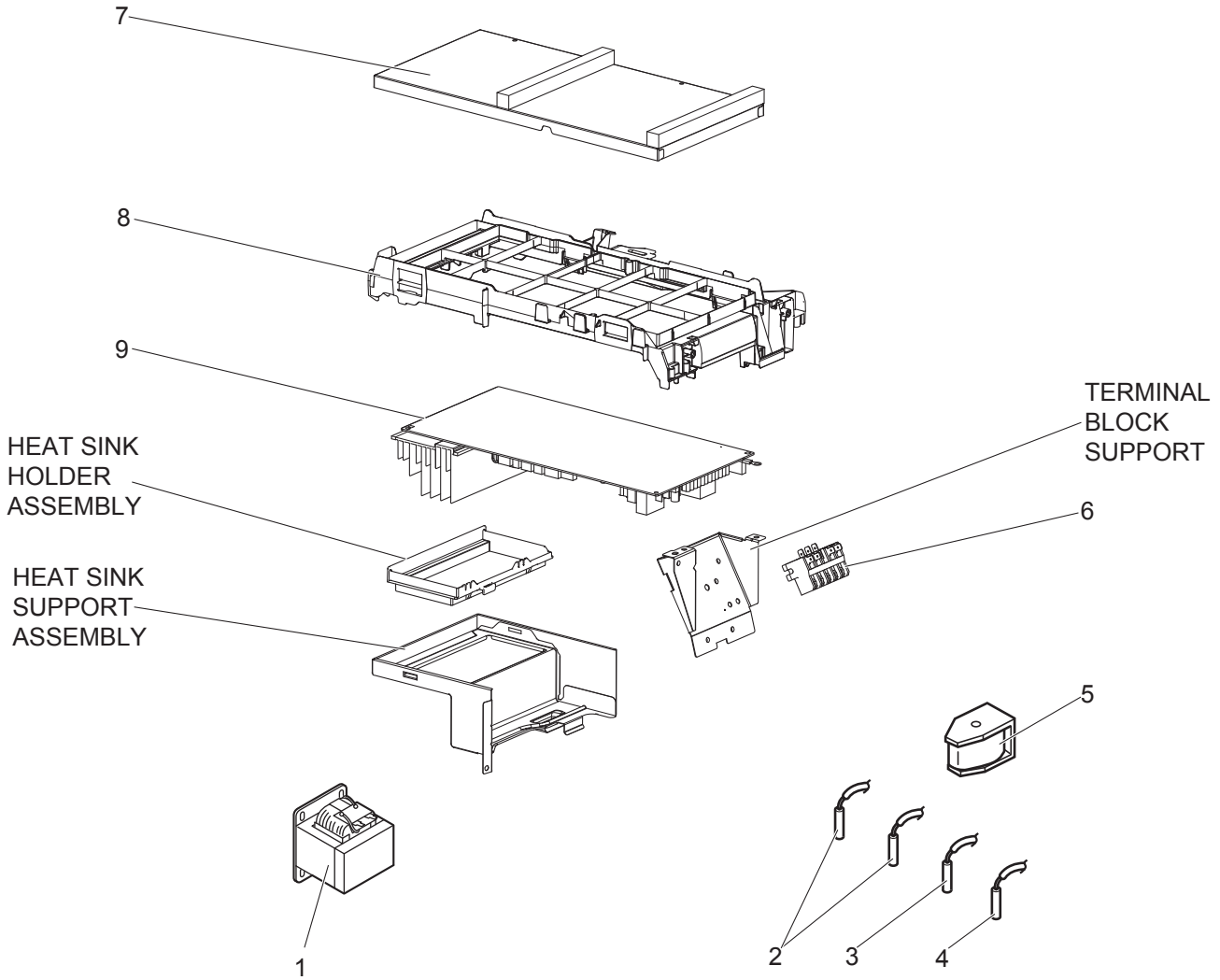


1-1. OUTDOOR UNIT STRUCTURAL PARTS AND FUNCTIONAL PARTS

Part numbers that are circled are not shown in the illustration.

No.	Part No.	Part Name	Symbol in Wiring Diagram	Q'ty/unit				Remarks
				MUZ-EF				
				25VG		35VG		
				E1	ET1	E1	ET1	
1	E22 J63 232	CABINET		1	1	1	1	
2	E22 J63 531	ICE GUARD		1	1	1	1	
3	E22 Y84 521	WIRE GRILLE		1	1	1	1	
4	E22 95B 501	PROPELLER FAN		1	1	1	1	
5	————	PROPELLER FAN NUT		1	1	1	1	SG12D375H03
6	E22 Y84 290	BASE ASSEMBLY		1	1	1	1	
7	E22 R81 900	COMPRESSOR	MC	1	1	1	1	KVB073FYXMC
8	E22 065 506	COMPRESSOR RUBBER SET		3	3	3	3	3 RUBBERS/SET
9	E22 T66 662	STOP VALVE		1	1	1	1	Liq: ø6.35
10	E22 T66 661	STOP VALVE		1	1	1	1	GAS: ø9.52
11	E22 L59 245	SERVICE PANEL ASSEMBLY		1	1	1	1	
12	E22 G11 233	BACK PANEL ASSEMBLY		1	1	1	1	
13	E22 47H 645	EXPANSION VALVE ASSEMBLY		1	1			Includes LEV body, capillary tube ø4.0×ø2.4×240, ø3.0×ø2.0×100
	E22 21G 645				1	1		Includes LEV body, capillary tube ø4.0×ø2.4×240
14	E22 Y84 493	EXPANSION VALVE COIL	LEV	1	1	1	1	
15	E22 R81 961	4-WAY VALVE		1	1	1	1	
16	E22 928 079	THERMO HOLDER (AMBIENT)		1	1			
	E22 930 079				1	1		
17	E22 47H 525	CONDENSER WIRE NET ASSEMBLY		1	1			
	E22 930 525				1	1		
18	E22 928 523	CONDENSER NET		1	1			
	E22 930 523				1	1		
19	E22 G10 293	SEPARATOR		1	1			
	E22 G11 293				1	1		
20	E22 97B 515	MOTOR SUPPORT		1	1			
	E22 47H 515				1	1		
21	E22 L85 297	TOP PANEL ASSEMBLY		1	1	1	1	
22	E22 47H 630	OUTDOOR HEAT EXCHANGER		1	1			
	E22 Y84 630				1	1		
23	E22 97B 301	OUTDOOR FAN MOTOR	MF	1	1	1	1	RC0J50-□□
24	————	TRADE MARK		1	1	1	1	DK79G041H02
25	E22 Y84 640	EXPANSION VALVE ASSEMBLY		1	1	1	1	
26	————	COMPRESSOR LEAD WIRE ASSEMBLY		1	1			DM78R027G06
						1	1	DM78R027G15
27	E22 838 704	DRAIN SOCKET		1	1	1	1	
28	————	THERMO HOLDER COVER		1	1	1	1	SG25J917G05
29	————	COMPRESSOR FELT (TOP)		1	1	1	1	SQ33J347H01
30	————	COMPRESSOR FELT (BODY)		1	1	1	1	JU33Y270H05
31	————	COMPRESSOR FELT (OUTER)		1	1	1	1	SG33V226H04

MUZ-EF25VG - [E1, ET1] MUZ-EF35VG - [E1, ET1]
1-2. OUTDOOR UNIT ELECTRICAL PARTS

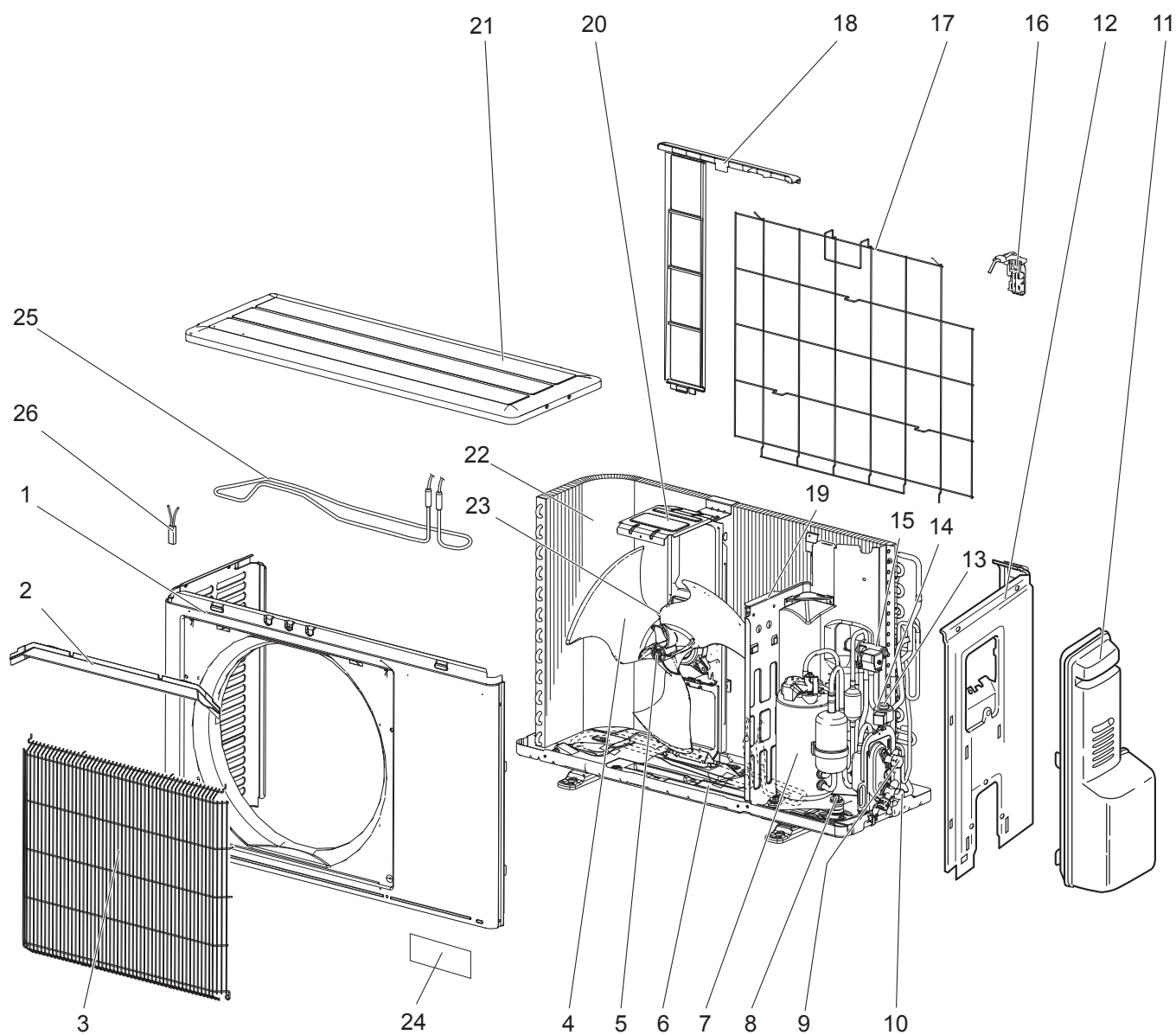


1-2. OUTDOOR UNIT ELECTRICAL PARTS

No.	Part No.	Part Name	Symbol in Wiring Diagram	Q'ty/unit				Remarks
				MUZ-EF				
				25VG		35VG		
E1	ET1	E1	ET1					
1	E22 11C 337	REACTOR	L61	1	1			
	E22 G11 337					1	1	
2	E22 C34 306	THERMISTOR SET	RT61, RT62	1	1			DEFROST, DISCHARGE
	E22 R81 306					1	1	
3	E22 927 308	AMBIENT TEMPERATURE THERMISTOR	RT65	1	1	1	1	
4	E22 88F 307	OUTDOOR HEAT EXCHANGER TEMPERATURE THERMISTOR	RT68	1	1			
	E22 P72 307					1	1	
5	E22 J47 490	R.V. COIL ASSEMBLY	21S4	1	1			
	E22 R81 490					1	1	
6	E22 T95 374	TERMINAL BLOCK	TB1	1	1	1	1	5P (S1, S2, S3, L, N)
7	————	P.C. BOARD COVER		1	1	1	1	DY02B444G02, DU33N535H56, DU33N535HA7, DM33T569H01 (4 PCS)
8	————	P.C. BOARD SUPPORT		1	1	1	1	RK00A867G01
9	E22 47H 451	INVERTER P.C. BOARD ASSEMBLY		1				Includes heat sink and RT64
	E22 53H 451				1			
	E22 48H 451					1		
	E22 54H 451						1	

MUZ-EF25VGH - E1 MUZ-EF35VGH - E1

1-3. OUTDOOR UNIT STRUCTURAL PARTS AND FUNCTIONAL PARTS

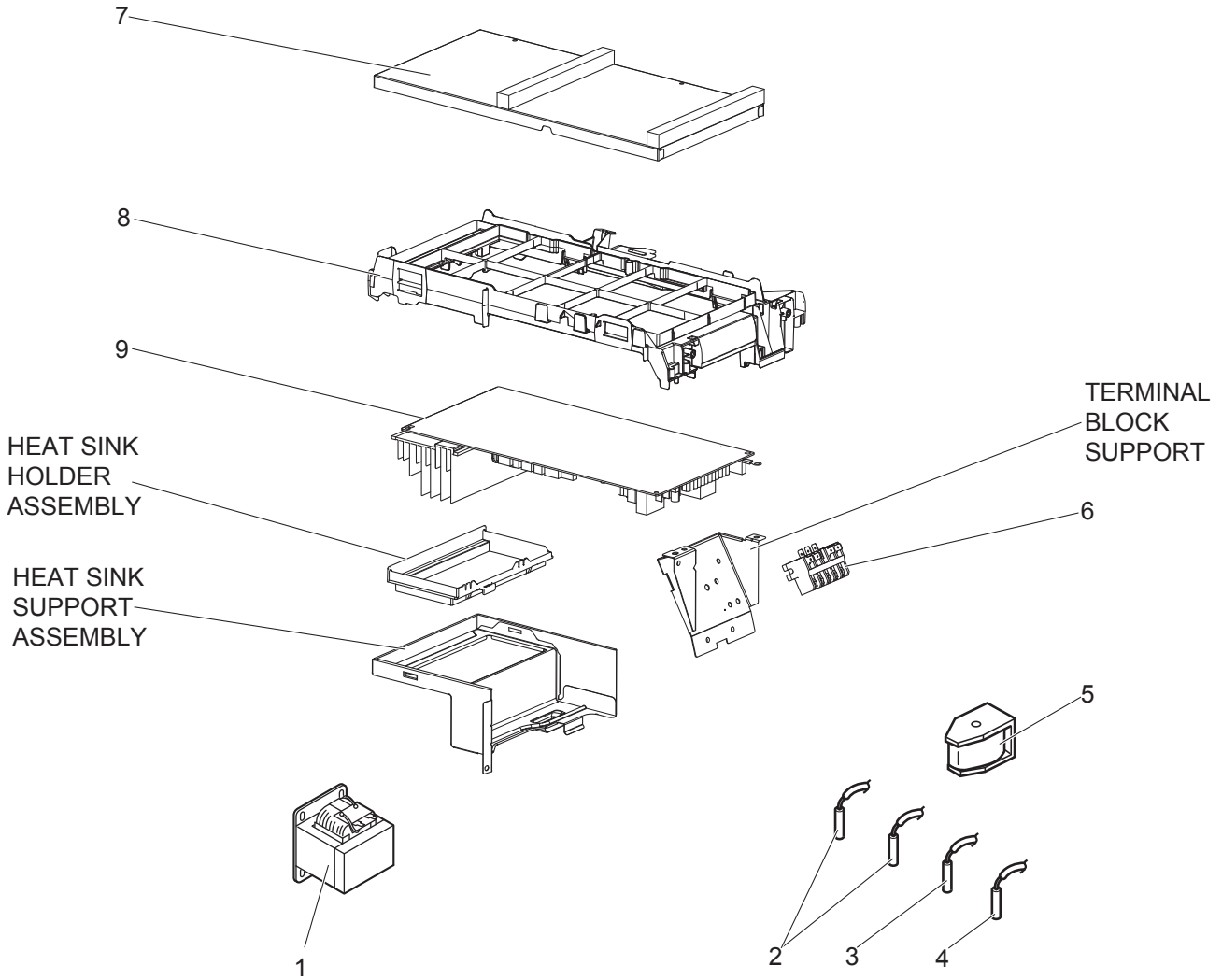


1-3. OUTDOOR UNIT STRUCTURAL PARTS AND FUNCTIONAL PARTS

Part numbers that are circled are not shown in the illustration.

No.	Part No.	Part Name	Symbol in Wiring Diagram	Q'ty/unit		Remarks
				MUZ-EF		
				25VGH	35VGH	
				E1	E1	
1	E22 J63 232	CABINET		1	1	
2	E22 J63 531	ICE GUARD		1	1	
3	E22 Y84 521	WIRE GRILLE		1	1	
4	E22 95B 501	PROPELLER FAN		1	1	
5	————	PROPELLER FAN NUT		1	1	SG12D375H03
6	E22 Y96 290	BASE ASSEMBLY		1	1	
7	E22 R81 900	COMPRESSOR	MC	1	1	KVB073FYXMC
8	E22 065 506	COMPRESSOR RUBBER SET		3	3	3 RUBBERS/SET
9	E22 T66 662	STOP VALVE		1		Liq: ø6.35
10	E22 T66 661	STOP VALVE			1	Gas: ø9.52
11	E22 L59 245	SERVICE PANEL ASSEMBLY		1	1	
12	E22 G13 233	BACK PANEL ASSEMBLY		1	1	
13	E22 47H 645	EXPANSION VALVE ASSEMBLY		1		Includes LEV body, capillary tube ø4.0×ø2.4×240, ø3.0×ø2.0×100
	E22 21G 645				1	Includes LEV body, capillary tube ø4.0×ø2.4×240
14	E22 Y84 493	EXPANSION VALVE COIL	LEV	1	1	
15	E22 R81 961	4-WAY VALVE		1	1	
16	E22 928 079	THERMO HOLDER (AMBIENT)		1		
	E22 930 079				1	
17	E22 47H 525	CONDENSER WIRE NET ASSEMBLY		1		
	E22 930 525				1	
18	E22 928 523	CONDENSER NET		1		
	E22 930 523				1	
19	E22 G13 293	SEPARATOR		1		
	E22 G14 293				1	
20	E22 97B 515	MOTOR SUPPORT		1		
	E22 47H 515				1	
21	E22 L85 297	TOP PANEL ASSEMBLY		1	1	
22	E22 47H 630	OUTDOOR HEAT EXCHANGER		1		
	E22 Y84 630				1	
23	E22 97B 301	OUTDOOR FAN MOTOR	MF	1	1	RC0J50-□□
24	————	TRADE MARK		1	1	DK79G041H02
25	E22 Y96 526	DEFROST HEATER	H	1	1	
26	E22 D65 381	HEATER PROTECTOR ASSEMBLY	26H	1	1	
27	E22 Y84 640	EXPANSION VALVE		1	1	
28	————	COMPRESSOR LEAD WIRE ASSEMBLY		1		DM78R027G06
					1	DM78R027G15
29	————	THERMO HOLDER COVER		1	1	SG25J917G05
30	————	COMPRESSOR FELT (TOP)		1	1	SQ33J347H01
31	————	COMPRESSOR FELT (BODY)		1	1	JU33Y270H15
32	————	COMPRESSOR FELT (OUTER)		1	1	SG33V226H04

MUZ-EF25VGH - E1 MUZ-EF35VGH - E1
1-4. OUTDOOR UNIT ELECTRICAL PARTS



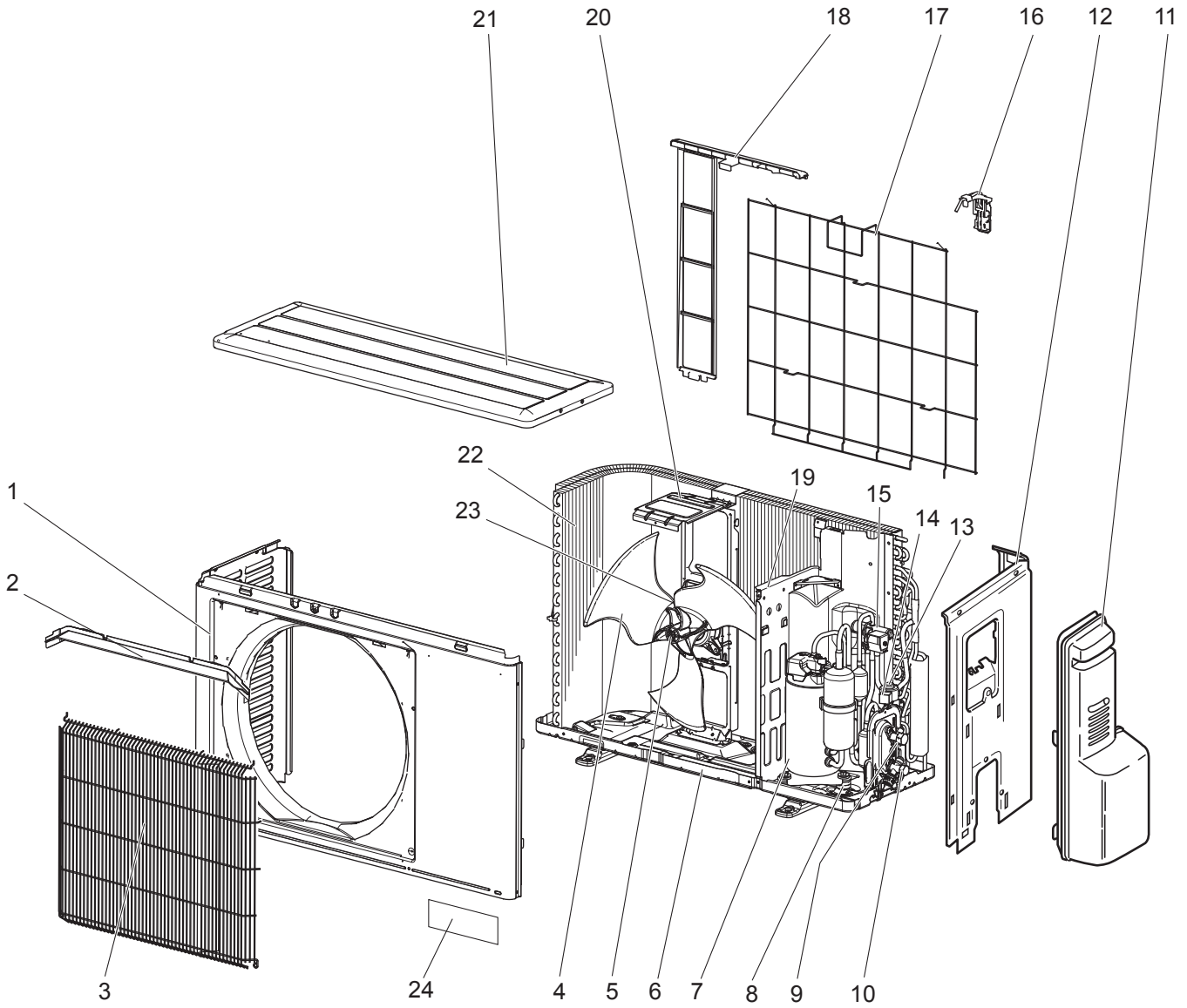


1-4. OUTDOOR UNIT ELECTRICAL PARTS

No.	Part No.	Part Name	Symbol in Wiring Diagram	Q'ty/unit		Remarks
				MUZ-EF		
				25VGH	35VGH	
				E1	E1	
1	E22 11C 337 E22 G11 337	REACTOR	L61	1		
2	E22 C34 306 E22 R81 306	THERMISTOR SET	RT61, RT62	1		DEFROST, DISCHARGE
3	E22 927 308	AMBIENT TEMPERATURE THERMISTOR	RT65	1	1	
4	E22 88F 307 E22 P72 307	OUTDOOR HEAT EXCHANGER TEMPERATURE THERMISTOR	RT68	1		
5	E22 J47 490 E22 R81 490	R.V. COIL ASSEMBLY	21S4	1		
6	E22 T95 374	TERMINAL BLOCK	TB1	1	1	5P (S1, S2, S3, L, N)
7	————	P.C. BOARD COVER		1	1	DY02B444G02, DU33N535H56, DU33N535HA7, DM33T569H01 (4 PCS)
8	————	P.C. BOARD SUPPORT		1	1	RK00A867G01
9	E22 51H 451 E22 52H 451	INVERTER P.C. BOARD ASSEMBLY		1		Includes heat sink and RT64
					1	

MUZ-EF42VG - [E1, ET1]

1-5. OUTDOOR UNIT STRUCTURAL PARTS AND FUNCTIONAL PARTS



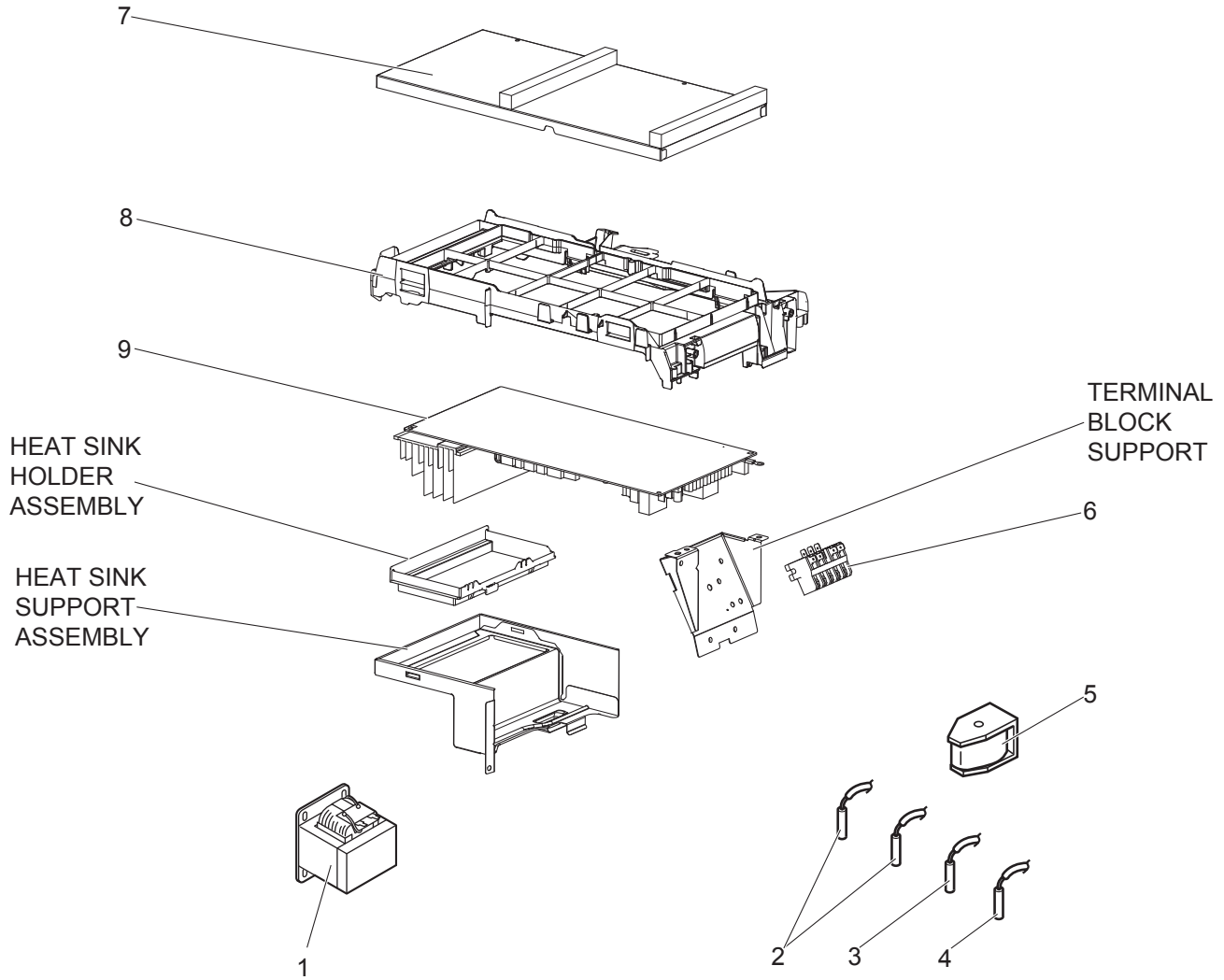
1-5. OUTDOOR UNIT STRUCTURAL PARTS AND FUNCTIONAL PARTS

Part numbers that are circled are not shown in the illustration.

No.	Part No.	Part Name	Symbol in Wiring Diagram	Q'ty/unit		Remarks
				MUZ-EF42VG		
				E1	ET1	
1	E22 J63 232	CABINET		1	1	
2	E22 J63 531	ICE GUARD		1	1	
3	E22 Y84 521	WIRE GRILLE		1	1	
4	E22 95B 501	PROPELLER FAN		1	1	
5	————	PROPELLER FAN NUT		1	1	SG12D375H03
6	E22 Y84 290	BASE ASSEMBLY		1	1	
7	E22 R83 900	COMPRESSOR	MC	1	1	SVB130FBBMT
8	E22 C34 506	COMPRESSOR RUBBER SET		3	3	3 RUBBERS/SET
9	E22 T66 662	STOP VALVE (LIQUID)		1	1	Liq: ø6.35
10	E22 T66 661	STOP VALVE (GAS)		1	1	Gas: ø9.52
11	E22 L59 245	SERVICE PANEL ASSEMBLY		1	1	
12	E22 G15 233	BACK PANEL ASSEMBLY		1	1	
13	E22 21G 645	EXPANSION VALVE ASSEMBLY		1	1	Includes LEV body, capillary tube ø4.0×ø2.4×240
14	E22 Y84 493	EXPANSION VALVE COIL	LEV	1	1	
15	E22 R81 961	4-WAY VALVE		1	1	
16	E22 930 079	THERMO HOLDER (AMBIENT)		1	1	
17	E22 930 525	CONDENSER WIRE NET ASSEMBLY		1	1	
18	E22 930 523	CONDENSER NET		1	1	
19	E22 G11 293	SEPARATOR		1	1	
20	E22 47H 515	MOTOR SUPPORT		1	1	
21	E22 L85 297	TOP PANEL ASSEMBLY		1	1	
22	E22 Y84 630	OUTDOOR HEAT EXCHANGER		1	1	Includes No. 27
23	E22 97B 301	OUTDOOR FAN MOTOR	MF	1	1	RC0J50-□□
24	————	TRADE MARK		1	1	DK79G041H02
②⑤	E22 Y84 640	EXPANSION VALVE		1	1	
②⑥	————	COMPRESSOR LEAD WIRE ASSEMBLY		1	1	DM78R027G16
②⑦	E22 838 704	DRAIN SOCKET		1	1	
②⑧	————	THERMO HOLDER COVER		1	1	SG25J917G05
②⑨	————	COMPRESSOR FELT (TOP)		1	1	SQ33J347H02
③⑩	————	COMPRESSOR FELT (BODY)		1	1	JU33Y270H15
③①	————	COMPRESSOR FELT (OUTER)		1	1	SG33V226H04

MUZ-EF42VG - E1, ET1

1-6. OUTDOOR UNIT ELECTRICAL PARTS



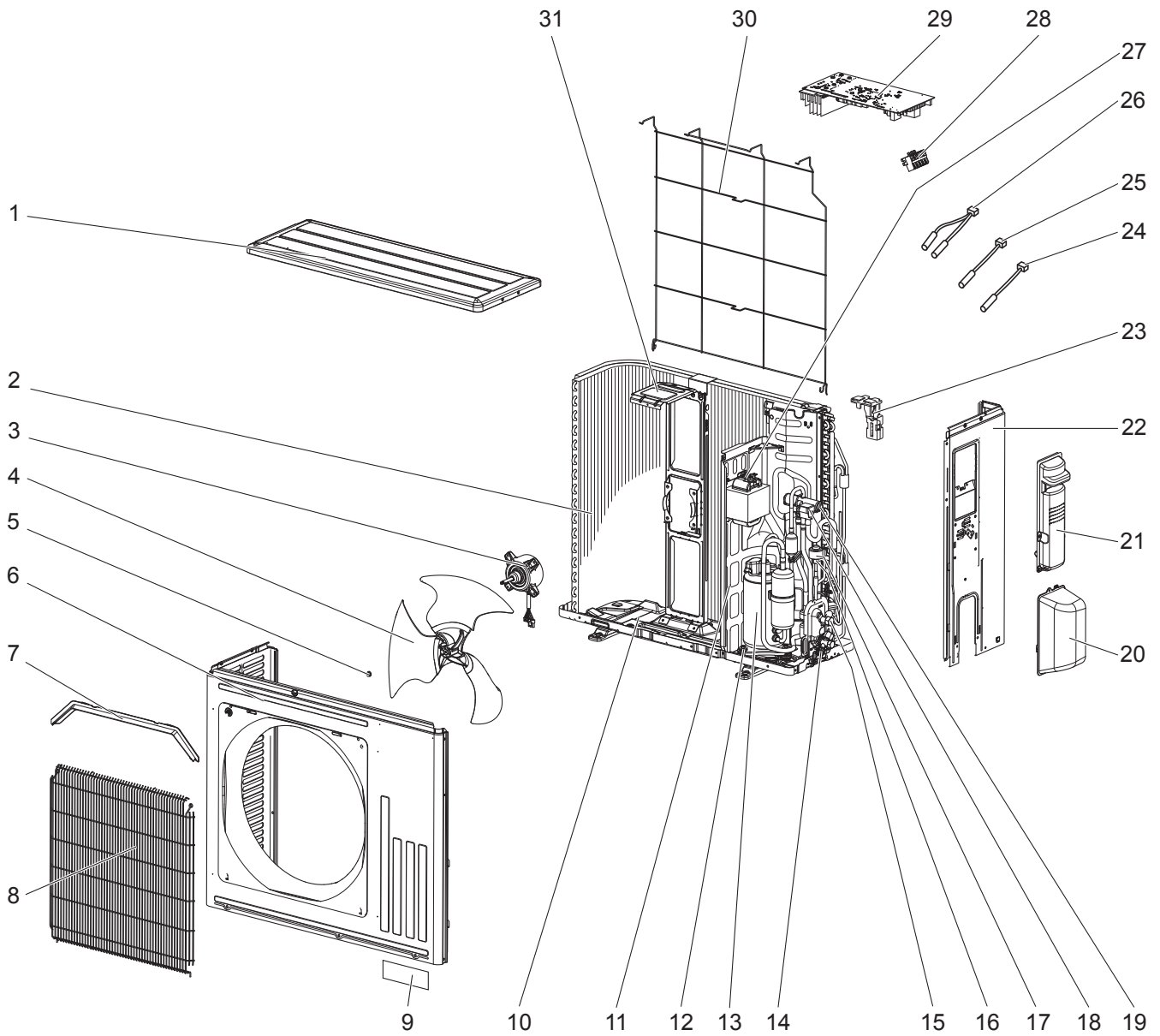


1-6. OUTDOOR UNIT ELECTRICAL PARTS

No.	Part No.	Part Name	Symbol in Wiring Diagram	Q'ty/unit		Remarks
				MUZ-EF42VG		
				E1	ET1	
1	E22 G11 337	REACTOR	L61	1	1	
2	E22 R81 306	THERMISTOR SET	RT61, RT62	1	1	DEFROST, DISCHARGE
3	E22 927 308	AMBIENT TEMPERATURE THERMISTOR	RT65	1	1	
4	E22 P72 307	OUTDOOR HEAT EXCHANGER TEMPERATURE THERMISTOR	RT68	1	1	
5	E22 R81 490	R.V. COIL ASSEMBLY	21S4	1	1	
6	E22 T95 374	TERMINAL BLOCK	TB1	1	1	5P (S1, S2, S3, L, N)
7	_____	P.C. BOARD COVER		1	1	DY02B444G02, DU33N535H56, DU33N535HA7, DM33T569H01 (4 PCS)
8	_____	P.C. BOARD SUPPORT		1	1	RK00A867G01
9	E22 49H 451	INVERTER P.C. BOARD ASSEMBLY		1		Includes heat sink and RT64
	E22 55H 451				1	

MUZ-EF50VG - [E1], [ET1]

1-7. OUTDOOR UNIT STRUCTURAL PARTS, ELECTRICAL PARTS AND FUNCTIONAL PARTS



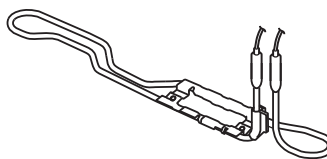
1-7. OUTDOOR UNIT STRUCTURAL PARTS, ELECTRICAL PARTS AND FUNCTIONAL PARTS

Part numbers that are circled are not shown in the illustration.

No.	Part No.	Part Name	Symbol in Wiring Diagram	Q'ty/unit		Remarks
				MUZ-EF50VG		
				E1	ET1	
1	E22 Y86 297	TOP PANEL		1	1	
2	E22 Y86 630	OUTDOOR HEAT EXCHANGER		1	1	
3	E22 Y86 301	OUTDOOR FAN MOTOR	MF	1	1	RC0J50-□□
4	E22 Y86 501	PROPELLER FAN		1	1	
5	—————	PROPELLER FAN NUT		1	1	SG12D375H03
6	E22 Y86 232	CABINET		1	1	
7	E22 Y86 531	ICE GUARD		1	1	
8	E22 Y86 521	GRILLE		1	1	
9	—————	TRADE MARK		1	1	DK79G041H02
10	E22 Y84 290	BASE		1	1	
11	E22 Y86 293	SEPARATOR		1	1	
12	E22 C34 506	COMPRESSOR RUBBER SET		3	3	3 RUBBERS/SET
13	E22 R83 900	COMPRESSOR	MC	1	1	SVB130FBBMT
14	E22 Y86 661	STOP VALVE (GAS)		1	1	ø9.52
15	E22 Y86 662	STOP VALVE (LIQUID)		1	1	ø6.35
16	E22 41G 645	EXPANSION VALVE		1	1	Includes LEV body, capillary tube
17	E22 Y84 493	EXPANSION VALVE COIL	LEV	1	1	
18	E22 Y86 490	R.V. COIL	21S4	1	1	
19	E22 J44 961	4-WAY VALVE		1	1	
20	E22 Y86 650	VALVE COVER		1	1	
21	E22 Y86 245	SERVICE PANEL		1	1	
22	E22 Y86 233	BACK PANEL (OUT)		1	1	
23	E22 22A 079	THERMO HOLDER		1	1	
24	E22 Y86 309	AMBIENT TEMPERATURE THERMISTOR	RT65	1	1	
25	E22 C34 307	OUTDOOR HEAT EXCHANGER TEMPERATURE THERMISTOR	RT68	1	1	
26	E22 Y86 306	THERMISTOR SET	RT61, RT62	1	1	DEFROST, DISCHARGE
27	E22 H21 337	REACTOR	L61	1	1	
28	E22 T95 374	TERMINAL BLOCK	TB1	1	1	5 P
29	E22 50H 451	INVERTER P.C. BOARD		1		Includes heat sink and RT64
	E22 56H 451				1	
30	E22 Y86 525	CONDENSER WIRE NET		1	1	
31	E22 Y86 515	MOTOR SUPPORT		1	1	
32	E22 838 704	DRAIN SOCKET		1	1	
33	E22 Y84 640	EXPANSION VALVE		1	1	LEV body
34	E22 J47 936	CAPILLARY TUBE		1	1	ø4.0 × ø2.4 × 240
35	E22 F35 936	CAPILLARY TUBE		2	2	ø3.0 × ø2.0 × 210
36	—————	PB SUPPORT		1	1	RK00A627G01
37	—————	PB COVER		1	1	DY00B947G02
38	—————	COMPRESSOR LEAD WIRE ASSEMBLY		1	1	DY78C464G02
39	—————	COMPRESSOR FELT (TOP)		1	1	SQ33J842H03
40	—————	COMPRESSOR FELT (BODY)		1	1	SQ33Y585H02
41	—————	COMPRESSOR FELT (OUTER)		1	1	SG33V226H04

2-1. DEFROST HEATER

Model	Parts No.
MUZ-EF42VG	MAC-643BH-E
MUZ-EF50VG	MAC-646BH-E

**NOTE:**

- Attaching the Freeze-prevention heater "MAC-643BH-E Anti-Freeze Heater" (for drain pan) to MUZ-EF25/35VG requires installation of the INVERTER P.C. BOARD for MUZ-EF25/35VGH. Order the INVERTER P.C. BOARD for MUZ-EF25/35VGH as needed.
- Refer to the installation manual for the installation.

MITSUBISHI ELECTRIC CORPORATION

HEAD OFFICE: TOKYO BUILDING, 2-7-3, MARUNOUCHI, CHIYODA-KU, TOKYO 100-8310, JAPAN

© Copyright 2019 MITSUBISHI ELECTRIC CORPORATION

Published: Mar. 2019. No. OBB832

Made in Japan

Specifications are subject to change without notice.