

**Revision B:**

• MSZ-AP25/35/42VG(K)- [ER1] and MSZ-AP60/71VG(K)- [E1], [ET1] have been added.

OBB788 REVISED EDITION-A is void.

# INDOOR UNIT PARTS CATALOG

**No. OBB788  
REVISED EDITION-B**

## Models

**MSZ-AP25VG** - [E1], [EN1], [ET1], [ER1]

**MSZ-AP35VG** - [E1], [EN1], [ET1], [ER1]

**MSZ-AP42VG** - [E1], [EN1], [ET1], [ER1]

**MSZ-AP50VG** - [E1], [EN1], [ET1]

**MSZ-AP60VG** - [E1], [ET1]

**MSZ-AP71VG** - [E1], [ET1]

**MSZ-AP25VGK** - [E1], [EN1], [ET1], [ER1]

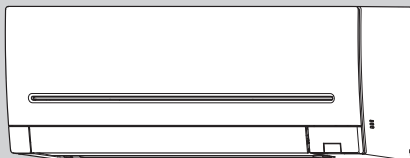
**MSZ-AP35VGK** - [E1], [EN1], [ET1], [ER1]

**MSZ-AP42VGK** - [E1], [EN1], [ET1], [ER1]

**MSZ-AP50VGK** - [E1], [EN1], [ET1]

**MSZ-AP60VGK** - [E1], [ET1]

**MSZ-AP71VGK** - [E1], [ET1]



**MSZ-AP25VG**   **MSZ-AP25VGK**  
**MSZ-AP35VG**   **MSZ-AP35VGK**  
**MSZ-AP42VG**   **MSZ-AP42VGK**  
**MSZ-AP50VG**   **MSZ-AP50VGK**

## CONTENTS

1. SERVICE PARTS LIST..... 2
2. OPTIONAL PARTS..... 26

**SERVICE MANUAL (OBH788)**

**Revision A:**

• MSZ-AP25/35/42/50VG(K)- [ET1] have been added.

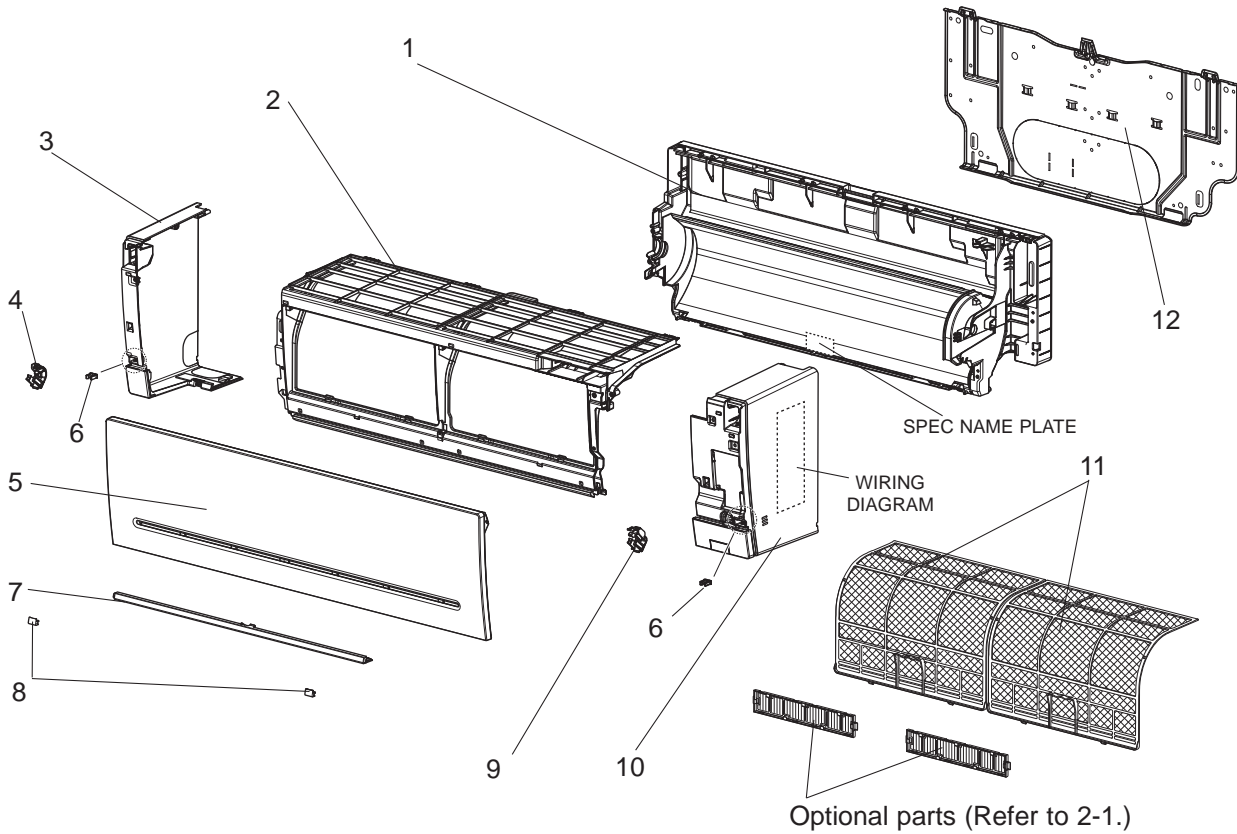
**Revision B:**

• MSZ-AP25/35/42VG(K)- [ER1] and MSZ-AP60/71VG(K)- [E1], [ET1] have been added.

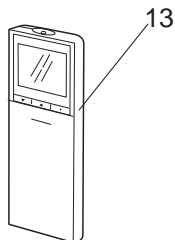
# 1 SERVICE PARTS LIST

**MSZ-AP25VG-** [E1], [EN1], [ET1]    **MSZ-AP35VG-** [E1], [EN1], [ET1]  
**MSZ-AP42VG-** [E1], [EN1], [ET1]    **MSZ-AP50VG-** [E1], [EN1], [ET1]

## 1-1. INDOOR UNIT STRUCTURAL PARTS



## 1-2. ACCESSORY AND REMOTE CONTROLLER





**1-1. INDOOR UNIT STRUCTURAL PARTS**

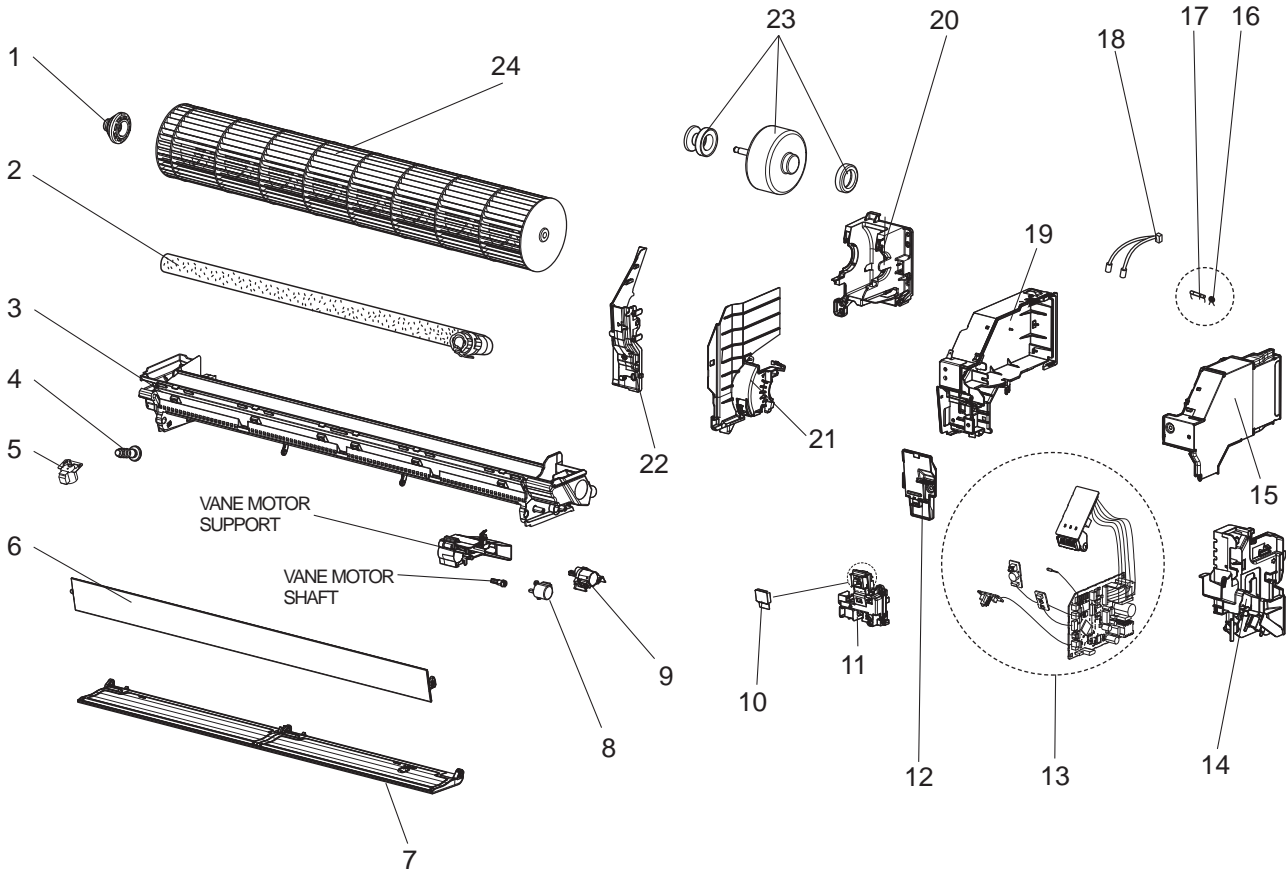
No.	Part No.	Part name	Symbol in Wiring Diagram	Q'ty/unit												Remarks
				MSZ-AP												
				25			35			42			50			
				VG	VG	VG	VG	VG	VG	VG	VG	VG	VG	VG	VG	
-E1	-EN1	-ET1	-E1	-EN1	-ET1	-E1	-EN1	-ET1	-E1	-EN1	-ET1					
1	G2W 001 026	BOX ASSEMBLY		1	1	1	1	1	1	1	1	1	1	1	1	Not including SPEC NAME PLATE
2	G2W 001 003	PANEL (FRONT) ASSEMBLY		1	1	1	1	1	1	1	1	1	1	1	1	
3	G2W 001 020	PANEL (LEFT) ASSEMBLY		1	1	1	1	1	1	1	1	1	1	1	1	Includes No. 4, 6
4	G2W 001 120	ARM HOLDER (LEFT)		1	1	1	1	1	1	1	1	1	1	1	1	
5	G2W 001 010	FRONT PANEL		1	1	1	1	1	1	1	1	1	1	1	1	
6	G2W 001 118	CATCH		2	2	2	2	2	2	2	2	2	2	2	2	
7	G2W 001 006	PANEL (UNDER) ASSEMBLY		1	1	1	1	1	1	1	1	1	1	1	1	
8	G2W 001 023	SCREW CAP		2	2	2	2	2	2	2	2	2	2	2	2	
9	G2W 002 120	ARM HOLDER (RIGHT)		1	1	1	1	1	1	1	1	1	1	1	1	
10	G2W 001 014	PANEL (RIGHT) ASSEMBLY		1	1	1	1	1	1	1	1	1	1	1	1	Includes No. 6, 9 Not including WIRING DIAGRAM
11	G2W 001 100	AIR FILTER		2	2	2	2	2	2	2	2	2	2	2	2	1 PC/SET
12	G2W 001 115	INSTALLATION PLATE		1	1	1	1	1	1	1	1	1	1	1	1	

**1-2. ACCESSORY AND REMOTE CONTROLLER**

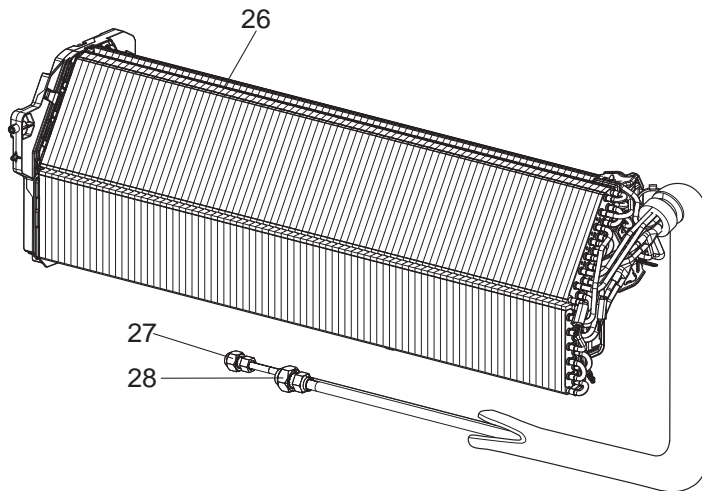
No.	Part No.	Part name	Symbol in Wiring Diagram	Q'ty/unit												Remarks
				MSZ-AP												
				25			35			42			50			
				VG	VG	VG	VG	VG	VG	VG	VG	VG	VG	VG	VG	
-E1	-EN1	-ET1	-E1	-EN1	-ET1	-E1	-EN1	-ET1	-E1	-EN1	-ET1					
13	G2W 001 400	REMOTE CONTROLLER		1	1	1	1	1	1	1	1	1	1	1	1	SG17B

MSZ-AP25VG- E1, EN1, ET1    MSZ-AP35VG- E1, EN1, ET1  
 MSZ-AP42VG- E1, EN1, ET1    MSZ-AP50VG- E1, EN1, ET1

**1-3. INDOOR UNIT ELECTRICAL PARTS AND FUNCTIONAL PARTS**



**1-4. INDOOR UNIT HEAT EXCHANGER**



### 1-3. INDOOR UNIT ELECTRICAL PARTS AND FUNCTIONAL PARTS

Part number that is circled is not shown in the illustration.

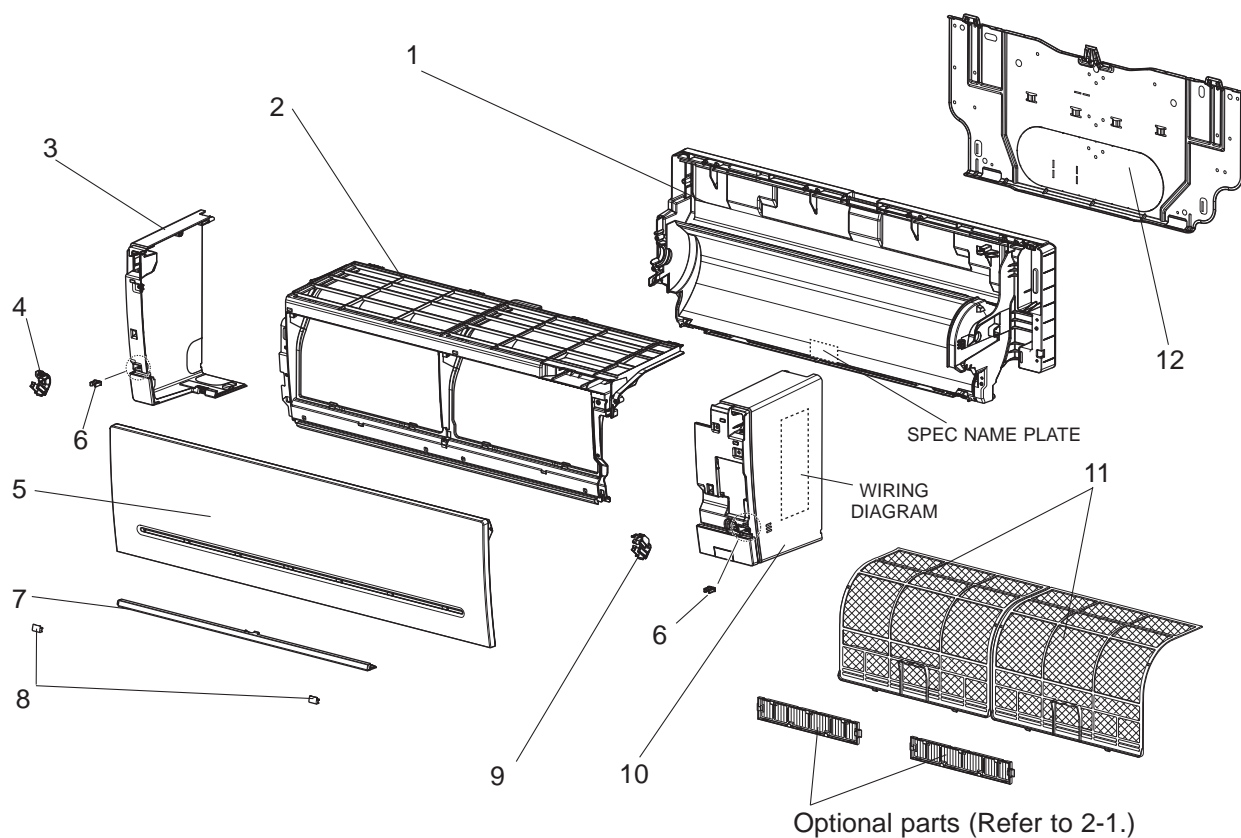
No.	Part No.	Part name	Symbol in Wiring Diagram	Q'ty/unit												Remarks
				MSZ-AP												
				25			35			42			50			
				VG	VG	VG	VG	VG	VG	VG	VG	VG	VG	VG	VG	
<del>E1</del>			<del>E1</del>			<del>E1</del>			<del>E1</del>							
1	G2W 002 520	BEARING MOUNT ASSEMBLY		1	1	1	1	1	1	1	1	1	1	1	1	Includes sleeve bearing
2	G2W 001 110	DRAIN HOSE ASSEMBLY (SHORT)		1		1	1	1		1	1		1		1	520 mm
	G2W 002 110	DRAIN HOSE ASSEMBLY (LONG)			1			1			1			1		670 mm
3	G2W 001 030	NOZZLE ASSEMBLY		1	1	1	1	1	1	1	1	1	1	1	1	
4	G2W 001 708	DRAIN CAP		1	1	1	1	1	1	1	1	1	1	1	1	
5	G2W 001 320	VANE MOTOR (VERTICAL)	MV3	1	1	1	1	1	1	1	1	1	1	1	1	RIGHT & LEFT
6	G2W 001 017	HORIZONTAL VANE (UPPER) ASSEMBLY		1	1	1	1	1	1	1	1	1	1	1	1	Includes shaft
7	G2W 002 017	HORIZONTAL VANE (LOWER) ASSEMBLY		1	1	1	1	1	1	1	1	1	1	1	1	Includes shaft
8	G2W 001 315	VANE MOTOR (HORIZONTAL) (UPPER)	MV1	1	1	1	1	1	1	1	1	1	1	1	1	UP & DOWN
9	G2W 002 315	VANE MOTOR (HORIZONTAL) (LOWER)	MV2	1	1	1	1	1	1	1	1	1	1	1	1	UP & DOWN
10	—	SWITCH SHEET		1	1	1	1	1	1	1	1	1	1	1	1	DY79D318H01
11	—	DISPLAY AND RECEIVER P.C. BOARD HOLDER ASSEMBLY		1	1	1	1	1	1	1	1	1	1	1	1	DY25A812G02
12	—	V.A. CLAMP ASSEMBLY		1	1	1	1	1	1	1	1	1	1	1	1	DK00G212G01
13	G2W 004 410	ELECTRONIC CONTROL P.C. BOARD		1	1	1										Includes RECEIVER P.C. BOARD, DISPLAY P.C. BOARD, SWITCH/BUZZER P.C. BOARD, TERMINAL P.C. BOARD and ROOM TEMPERATURE THERMISTOR (RT11)
	G2W 003 410					1	1	1								
	G2W 002 410								1	1	1					
	G2W 001 410										1	1	1			
14	—	CABLE GUIDE		1	1	1	1	1	1	1	1	1	1	1	1	DY25A811G02
15	—	PB-COVER (RIGHT)		1	1	1	1	1	1	1	1	1	1	1	1	DK00G213G01
16	G2W 001 425	VARISTOR	NR11	1	1	1	1	1	1	1	1	1	1	1	1	
17	G2W 001 422	FUSE	F11	1	1	1	1	1	1	1	1	1	1	1	1	T3.15AL250V
18	G2W 002 310	INDOOR COIL THERMISTOR	RT12						1	1	1	1	1	1		
	G2W 001 310		RT13	1	1	1	1	1	1							
19	—	PB-COVER (LEFT)		1	1	1	1	1	1	1	1	1	1	1	1	DK00G223G03
20	—	MOTOR BED		1	1	1	1	1	1	1	1	1	1	1	1	SQ00C989G04
21	G2W 001 103	MOTOR BAND		1	1	1	1	1	1	1	1	1	1	1	1	
22	—	WATER COVER		1	1	1	1	1	1	1	1	1	1	1	1	SQ25Y723G02
23	G2W 001 300	INDOOR FAN MOTOR	MF	1	1	1	1	1	1	1	1	1	1	1	1	RC0J30-□□ Includes FAN MOTOR RUBBER MOUNT (2 PCS/SET)
24	G2W 001 500	LINE FLOW FAN		1	1	1	1	1	1	1	1	1	1	1	1	
(25)	—	LEAD WIRE		1	1	1	1	1	1	1	1	1	1	1	1	SM00C948G02 Between CN151 on ELECTRONIC CONTROL P.C. BOARD and VANE MOTOR

### 1-4. INDOOR UNIT HEAT EXCHANGER

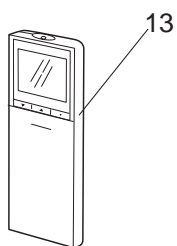
No.	Part No.	Part name	Symbol in Wiring Diagram	Q'ty/unit												Remarks
				MSZ-AP												
				25			35			42			50			
				VG	VG	VG	VG	VG	VG	VG	VG	VG	VG	VG	VG	
<del>E1</del>			<del>E1</del>			<del>E1</del>			<del>E1</del>							
26	G2W 001 600	INDOOR HEAT EXCHANGER		1		1	1									Includes No. 27, 28
	G2W 002 600								1	1	1		1			
	G2W 003 600			1		1										
	G2W 004 600								1				1			
27	G2W 001 605	UNION (LIQUID)		1	1	1	1	1	1	1	1	1	1	1	1	ø6.35
28	G2W 002 605	UNION (GAS)		1	1	1	1	1	1	1	1	1	1	1	1	ø9.52

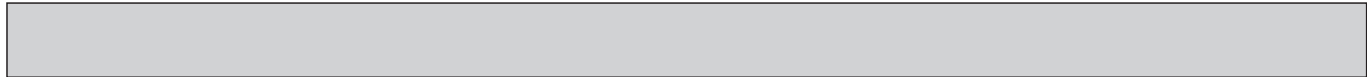
MSZ-AP25VG-ER1 MSZ-AP35VG-ER1 MSZ-AP42VG-ER1

### 1-5. INDOOR UNIT STRUCTURAL PARTS



### 1-6. ACCESSORY AND REMOTE CONTROLLER





### 1-5. INDOOR UNIT STRUCTURAL PARTS

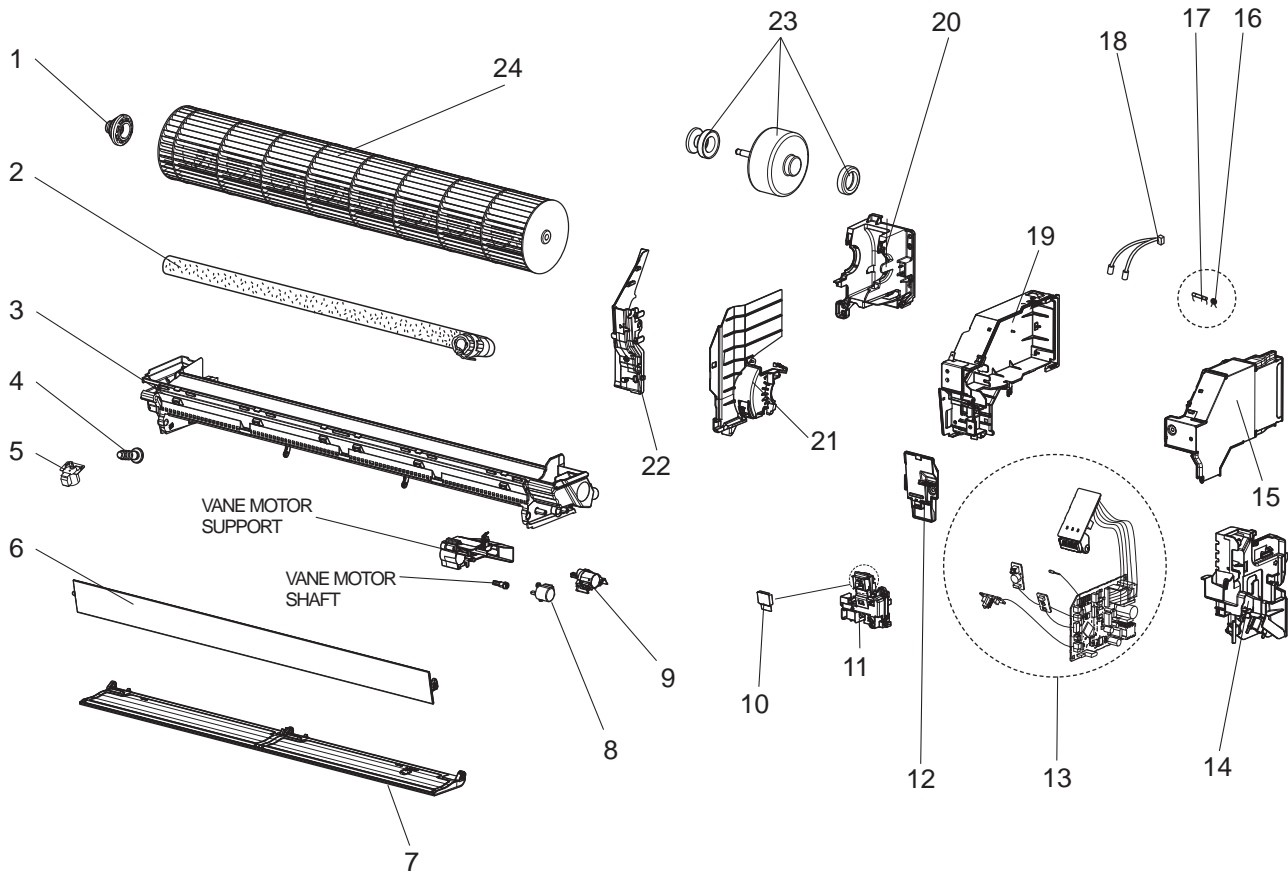
No.	Part No.	Part name	Symbol in Wiring Diagram	Q'ty/unit			Remarks
				MSZ-AP			
				25	35	42	
				VG-ER1	VG-ER1	VG-ER1	
1	G2W 001 026	BOX ASSEMBLY		1	1	1	Not including SPEC NAME PLATE
2	G2W 001 003	PANEL (FRONT) ASSEMBLY		1	1	1	
3	G2W 001 020	PANEL (LEFT) ASSEMBLY		1	1	1	Includes No. 4, 6
4	G2W 001 120	ARM HOLDER (LEFT)		1	1	1	
5	G2W 001 010	FRONT PANEL		1	1	1	
6	G2W 001 118	CATCH		2	2	2	
7	G2W 001 006	PANEL (UNDER) ASSEMBLY		1	1	1	
8	G2W 001 023	SCREW CAP		2	2	2	
9	G2W 002 120	ARM HOLDER (RIGHT)		1	1	1	
10	G2W 002 014	PANEL (RIGHT)ASSEMBLY		1	1	1	Includes No. 6, 9 Not including WIRING DIAGRAM
11	G2W 001 100	AIR FILTER		2	2	2	1 PC/SET
12	G2W 001 115	INSTALLATION PLATE		1	1	1	

### 1-6. ACCESSORY AND REMOTE CONTROLLER

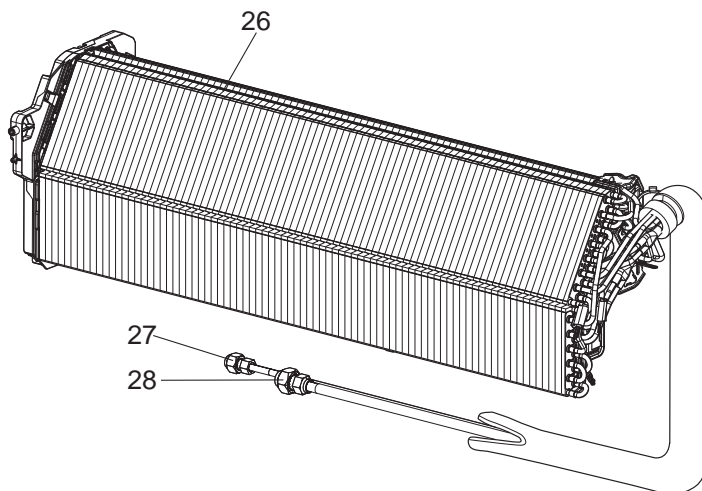
No.	Part No.	Part name	Symbol in Wiring Diagram	Q'ty/unit			Remarks
				MSZ-AP			
				25	35	42	
				VG-ER1	VG-ER1	VG-ER1	
13	G2W 004 400	REMOTE CONTROLLER		1	1	1	SG17B

MSZ-AP25VG-ER1 MSZ-AP35VG-ER1 MSZ-AP42VG-ER1

1-7. INDOOR UNIT ELECTRICAL PARTS AND FUNCTIONAL PARTS



1-8. INDOOR UNIT HEAT EXCHANGER





## 1-7. INDOOR UNIT ELECTRICAL PARTS AND FUNCTIONAL PARTS

Part number that is circled is not shown in the illustration.

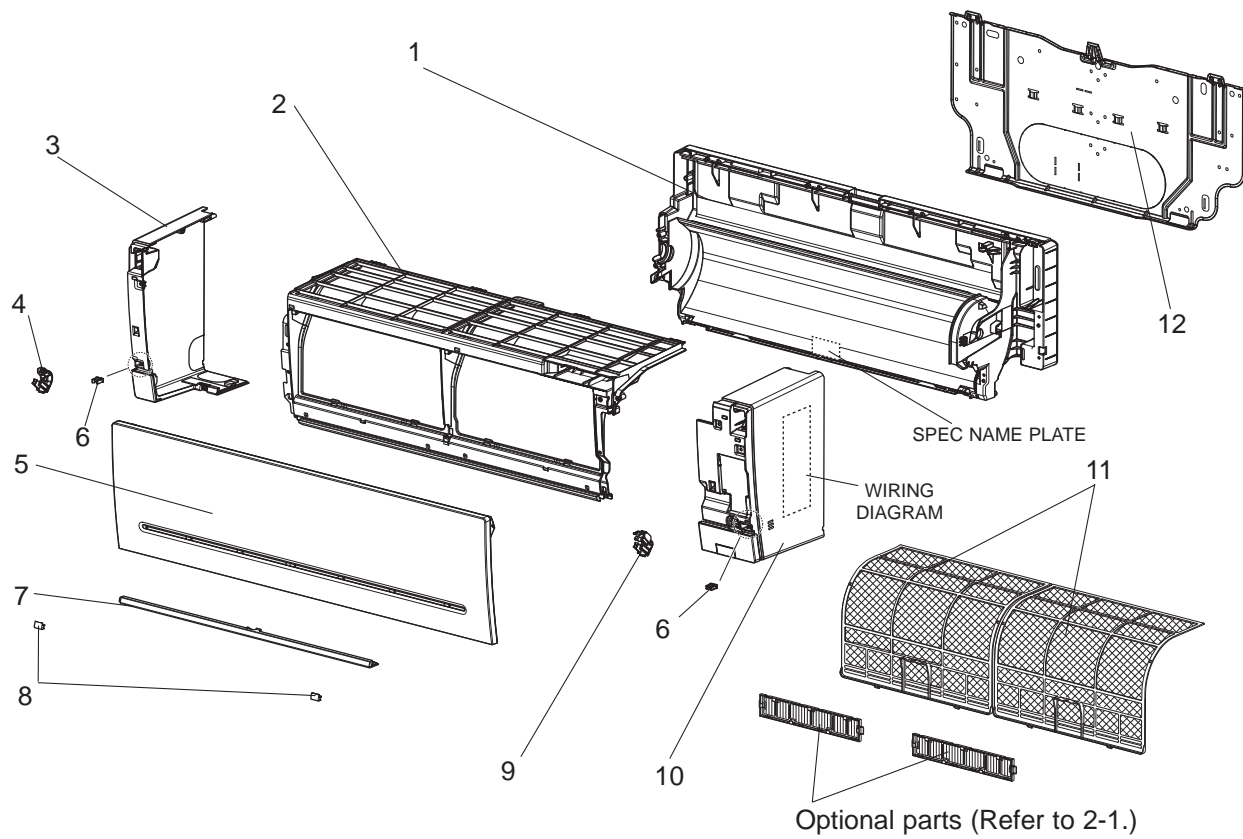
No.	Part No.	Part name	Symbol in Wiring Diagram	Q'ty/unit			Remarks
				MSZ-AP			
				25	35	42	
			VG-ER1	VG-ER1	VG-ER1		
1	G2W 002 520	BEARING MOUNT ASSEMBLY		1	1	1	Includes sleeve bearing
2	G2W 001 110	DRAIN HOSE ASSEMBLY		1	1	1	520 mm
3	G2W 001 030	NOZZLE ASSEMBLY		1	1	1	
4	G2W 001 708	DRAIN CAP		1	1	1	
5	G2W 001 320	VANE MOTOR (VERTICAL)	MV3	1	1	1	RIGHT & LEFT
6	G2W 001 017	HORIZONTAL VANE (UPPER) ASSEMBLY		1	1	1	Includes shaft
7	G2W 002 017	HORIZONTAL VANE (LOWER) ASSEMBLY		1	1	1	Includes shaft
8	G2W 001 315	VANE MOTOR (HORIZONTAL) (UPPER)	MV1	1	1	1	UP & DOWN
9	G2W 002 315	VANE MOTOR (HORIZONTAL) (LOWER)	MV2	1	1	1	UP & DOWN
10	—	SWITCH SHEET		1	1	1	DY79D318H01
11	—	DISPLAY AND RECEIVER P.C. BOARD HOLDER ASSEMBLY		1	1	1	DY25A812G02
12	—	V.A. CLAMP ASSEMBLY		1	1	1	DK00G212G01
13	G2W 004 410	ELECTRONIC CONTROL P.C. BOARD		1			Includes RECEIVER P.C. BOARD, DISPLAY P.C. BOARD, SWITCH/BUZZER P.C. BOARD, TERMINAL P.C. BOARD and ROOM TEMPERATURE THERMISTOR (RT11)
				1			
					1		
14	—	CABLE GUIDE		1	1	1	DY25A811G02
15	—	PB-COVER (RIGHT)		1	1	1	DK00G213G01
16	G2W 001 425	VARISTOR	NR11	1	1	1	
17	G2W 001 422	FUSE	F11	1	1	1	T3.15AL250V
18	G2W 002 310	INDOOR COIL THERMISTOR	RT12 RT13			1	
	G2W 001 310			1	1		
19	—	PB-COVER (LEFT)		1	1	1	DK00G223G03
20	—	MOTOR BED		1	1	1	SQ00C989G04
21	G2W 001 103	MOTOR BAND		1	1	1	
22	—	WATER COVER		1	1	1	SQ25Y723G02
23	G2W 001 300	INDOOR FAN MOTOR	MF	1	1	1	RC0J30-□□ Includes FAN MOTOR RUBBER MOUNT (2 PCS/SET)
24	G2W 001 500	LINE FLOW FAN		1	1	1	
②5	—	LEAD WIRE		1	1	1	SM00C948G02 Between CN151 on ELECTRONIC CONTROL P.C. BOARD and VANE MOTOR

## 1-8. INDOOR UNIT HEAT EXCHANGER

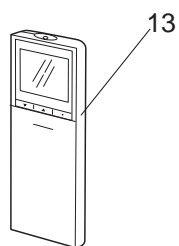
No.	Part No.	Part name	Symbol in Wiring Diagram	Q'ty/unit			Remarks
				MSZ-AP			
				25	35	42	
			VG-ER1	VG-ER1	VG-ER1		
26	G2W 001 600	INDOOR HEAT EXCHANGER		1	1		Includes No. 27, 28
	G2W 002 600					1	
27	G2W 001 605	UNION (LIQUID)		1	1	1	ø6.35
28	G2W 002 605	UNION (GAS)		1	1	1	ø9.52

MSZ-AP25VGK- E1, EN1, ET1      MSZ-AP35VGK- E1, EN1, ET1  
 MSZ-AP42VGK- E1, EN1, ET1      MSZ-AP50VGK- E1, EN1, ET1

**1-9. INDOOR UNIT STRUCTURAL PARTS**



**1-10. ACCESSORY AND REMOTE CONTROLLER**





**1-9. INDOOR UNIT STRUCTURAL PARTS**

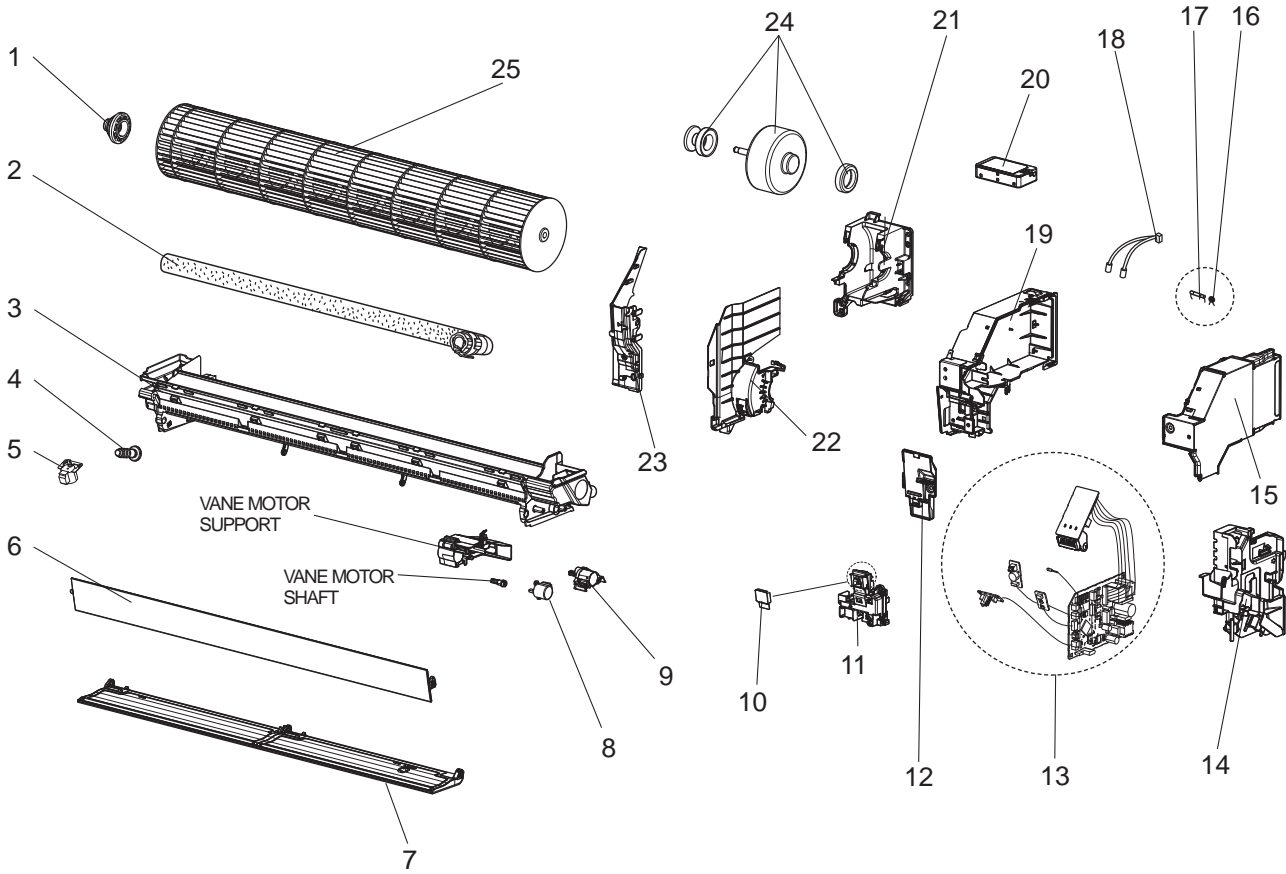
No.	Part No.	Part name	Symbol in Wiring Diagram	Q'ty/unit												Remarks
				MSZ-AP												
				25			35			42			50			
				VGK -E1	VGK -EN1	VGK -ET1	VGK -E1	VGK -EN1	VGK -ET1	VGK -E1	VGK -EN1	VGK -ET1	VGK -E1	VGK -EN1	VGK -ET1	
1	G2W 001 026	BOX ASSEMBLY		1	1	1	1	1	1	1	1	1	1	1	1	Not including SPEC NAME PLATE
2	G2W 001 003	PANEL (FRONT) ASSEMBLY		1	1	1	1	1	1	1	1	1	1	1	1	
3	G2W 001 020	PANEL (LEFT) ASSEMBLY		1	1	1	1	1	1	1	1	1	1	1	1	Includes No. 4, 6
4	G2W 001 120	ARM HOLDER (LEFT)		1	1	1	1	1	1	1	1	1	1	1	1	
5	G2W 001 010	FRONT PANEL		1	1	1	1	1	1	1	1	1	1	1	1	
6	G2W 001 118	CATCH		2	2	2	2	2	2	2	2	2	2	2	2	
7	G2W 001 006	PANEL (UNDER) ASSEMBLY		1	1	1	1	1	1	1	1	1	1	1	1	
8	G2W 001 023	SCREW CAP		2	2	2	2	2	2	2	2	2	2	2	2	
9	G2W 002 120	ARM HOLDER (RIGHT)		1	1	1	1	1	1	1	1	1	1	1	1	
10	G2W 001 014	PANEL (RIGHT) ASSEMBLY		1	1	1	1	1	1	1	1	1	1	1	1	Includes No. 6, 9 Not including WIRING DIAGRAM
11	G2W 001 100	AIR FILTER		2	2	2	2	2	2	2	2	2	2	2	2	1 PC/SET
12	G2W 001 115	INSTALLATION PLATE		1	1	1	1	1	1	1	1	1	1	1	1	

**1-10. ACCESSORY AND REMOTE CONTROLLER**

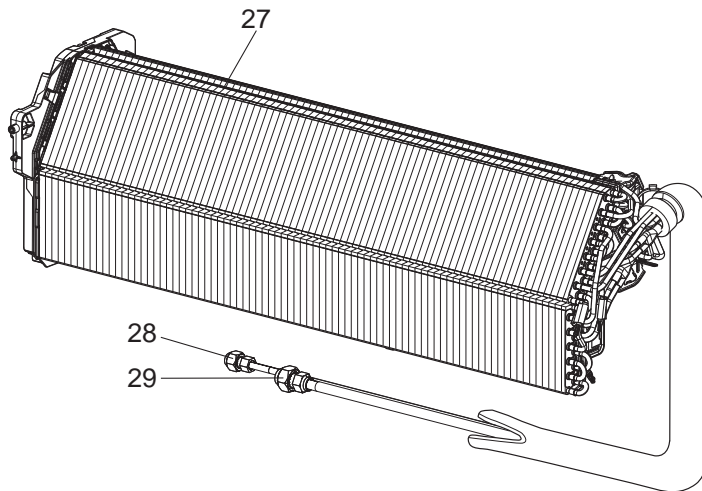
No.	Part No.	Part name	Symbol in Wiring Diagram	Q'ty/unit												Remarks
				MSZ-AP												
				25			35			42			50			
				VGK -E1	VGK -EN1	VGK -ET1	VGK -E1	VGK -EN1	VGK -ET1	VGK -E1	VGK -EN1	VGK -ET1	VGK -E1	VGK -EN1	VGK -ET1	
13	G2W 001 400	REMOTE CONTROLLER		1	1	1	1	1	1	1	1	1	1	1	1	SG17B

MSZ-AP25VGK- E1, EN1, ET1 MSZ-AP35VGK- E1, EN1, ET1  
 MSZ-AP42VGK- E1, EN1, ET1 MSZ-AP50VGK- E1, EN1, ET1

1-11. INDOOR UNIT ELECTRICAL PARTS AND FUNCTIONAL PARTS



1-12. INDOOR UNIT HEAT EXCHANGER



## 1-11. INDOOR UNIT ELECTRICAL PARTS AND FUNCTIONAL PARTS

Part number that is circled is not shown in the illustration.

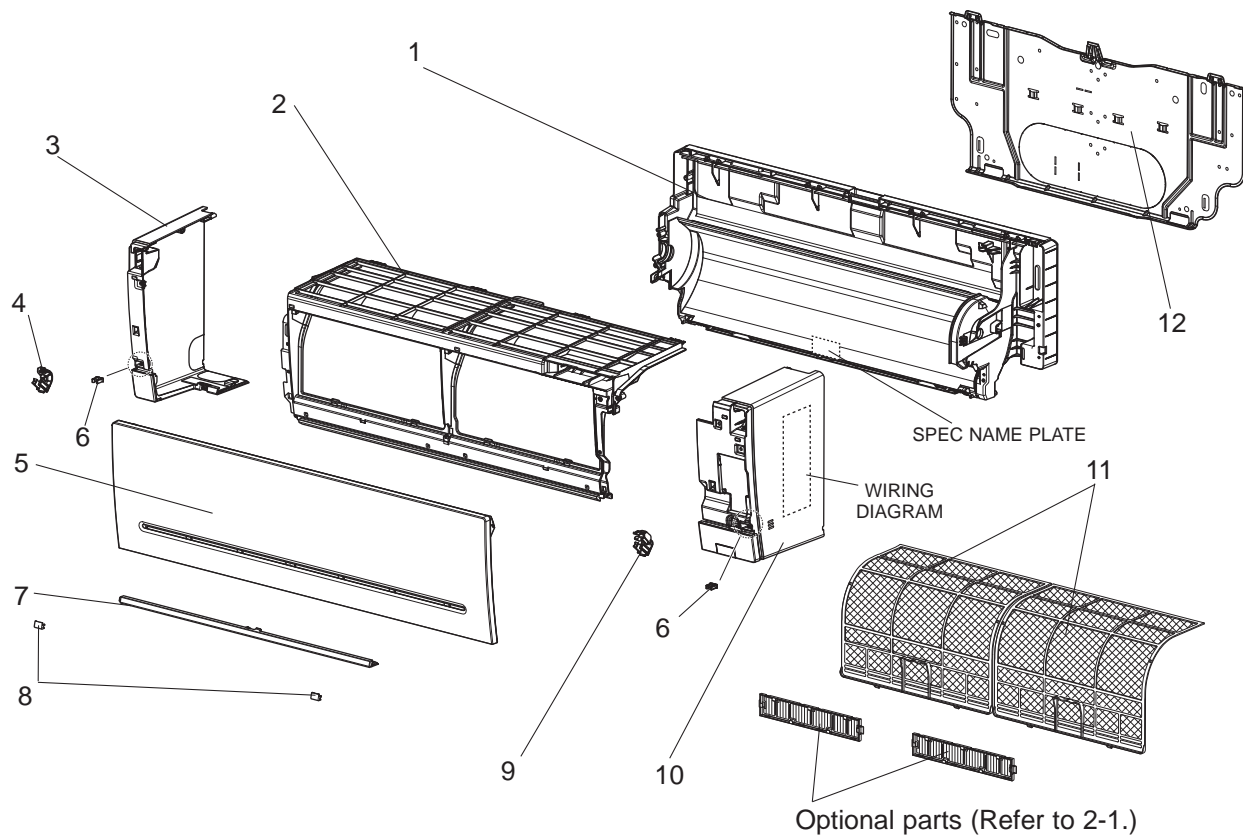
No.	Part No.	Part name	Symbol in Wiring Diagram	Q'ty/unit												Remarks
				MSZ-AP												
				25			35			42			50			
VGK	VGK	VGK	VGK	VGK	VGK	VGK	VGK	VGK	VGK	VGK	VGK	-E1	-EN1	-ET1		
1	G2W 002 520	BEARING MOUNT ASSEMBLY		1	1	1	1	1	1	1	1	1	1	1	1	Includes sleeve bearing
2	G2W 001 110	DRAIN HOSE ASSEMBLY (SHORT)		1		1	1	1		1	1		1	1		520 mm
	G2W 002 110	DRAIN HOSE ASSEMBLY (LONG)			1		1			1				1		670 mm
3	G2W 001 030	NOZZLE ASSEMBLY		1	1	1	1	1	1	1	1	1	1	1	1	
4	G2W 001 708	DRAIN CAP		1	1	1	1	1	1	1	1	1	1	1	1	
5	G2W 001 320	VANE MOTOR (VERTICAL)	MV3	1	1	1	1	1	1	1	1	1	1	1	1	RIGHT & LEFT
6	G2W 001 017	HORIZONTAL VANE (UPPER) ASSEMBLY		1	1	1	1	1	1	1	1	1	1	1	1	Includes shaft
7	G2W 002 017	HORIZONTAL VANE (LOWER) ASSEMBLY		1	1	1	1	1	1	1	1	1	1	1	1	Includes shaft
8	G2W 001 315	VANE MOTOR (HORIZONTAL) (UPPER)	MV1	1	1	1	1	1	1	1	1	1	1	1	1	UP & DOWN
9	G2W 002 315	VANE MOTOR (HORIZONTAL) (LOWER)	MV2	1	1	1	1	1	1	1	1	1	1	1	1	UP & DOWN
10	—	SWITCH SHEET		1	1	1	1	1	1	1	1	1	1	1	1	DY79D318H01
11	—	DISPLAY AND RECEIVER P.C. BOARD HOLDER ASSEMBLY		1	1	1	1	1	1	1	1	1	1	1	1	DY25A812G02
12	—	V.A. CLAMP ASSEMBLY		1	1	1	1	1	1	1	1	1	1	1	1	DK00G212G01
13	G2W 004 410	ELECTRONIC CONTROL P.C. BOARD		1	1	1										Includes RECEIVER P.C. BOARD, DISPLAY P.C. BOARD, SWITCH/ BUZZER P.C. BOARD, TERMINAL P.C. BOARD and ROOM TEM- PERATURE THERMISTOR (RT11)
	G2W 003 410					1	1	1								
	G2W 002 410								1	1	1					
	G2W 001 410										1	1	1			
14	—	CABLE GUIDE		1	1	1	1	1	1	1	1	1	1	1	1	DY25A811G02
15	—	PB-COVER (RIGHT)		1	1	1	1	1	1	1	1	1	1	1	1	DK00G213G01
16	G2W 001 425	VARISTOR	NR11	1	1	1	1	1	1	1	1	1	1	1	1	
17	G2W 001 422	FUSE	F11	1	1	1	1	1	1	1	1	1	1	1	1	T3.15AL250V
18	G2W 002 310	INDOOR COIL	RT12 RT13							1	1	1	1	1	1	
	G2W 001 310	THERMISTOR		1	1	1	1	1	1							
19	—	PB-COVER (LEFT)		1	1	1	1	1	1	1	1	1	1	1	1	DK00G223G03
20	G2W 001 405	Wi-Fi INTERFACE MAC-566IFB-E		1	1	1	1	1	1	1	1	1	1	1	1	MAC-566IFB-E
21	—	MOTOR BED		1	1	1	1	1	1	1	1	1	1	1	1	SQ00C989G04
22	G2W 001 103	MOTOR BAND		1	1	1	1	1	1	1	1	1	1	1	1	
23	—	WATER COVER		1	1	1	1	1	1	1	1	1	1	1	1	SQ25Y723G02
24	G2W 001 300	INDOOR FAN MOTOR	MF	1	1	1	1	1	1	1	1	1	1	1	1	RC0J30-□□ Includes FAN MOTOR RUBBER MOUNT (2 PCS/SET)
25	G2W 001 500	LINE FLOW FAN		1	1	1	1	1	1	1	1	1	1	1	1	
②6	—	LEAD WIRE		1	1	1	1	1	1	1	1	1	1	1	1	SM00C948G02 Between CN151 on ELECTRONIC CON- TROL P.C. BOARD and VANE MOTOR

## 1-12. INDOOR UNIT HEAT EXCHANGER

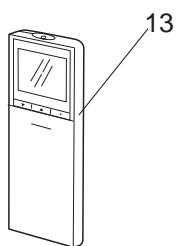
No.	Part No.	Part name	Symbol in Wiring Diagram	Q'ty/unit												Remarks
				MSZ-AP												
				25			35			42			50			
VGK	VGK	VGK	VGK	VGK	VGK	VGK	VGK	VGK	VGK	VGK	VGK	-E1	-EN1	-ET1		
27	G2W 001 600	INDOOR HEAT EXCHANGER		1		1	1									Includes No. 28, 29
	G2W 002 600							1	1	1		1				
	G2W 003 600			1		1										
	G2W 004 600								1			1				
28	G2W 001 605	UNION (LIQUID)		1	1	1	1	1	1	1	1	1	1	1	1	ø6.35
29	G2W 002 605	UNION (GAS)		1	1	1	1	1	1	1	1	1	1	1	1	ø9.52

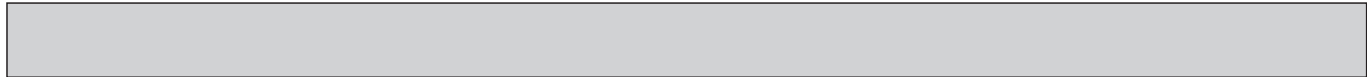
**MSZ-AP25VGK-ER1 MSZ-AP35VGK-ER1 MSZ-AP42VGK-ER1**

**1-13. INDOOR UNIT STRUCTURAL PARTS**



**1-14. ACCESSORY AND REMOTE CONTROLLER**



**1-13. INDOOR UNIT STRUCTURAL PARTS**

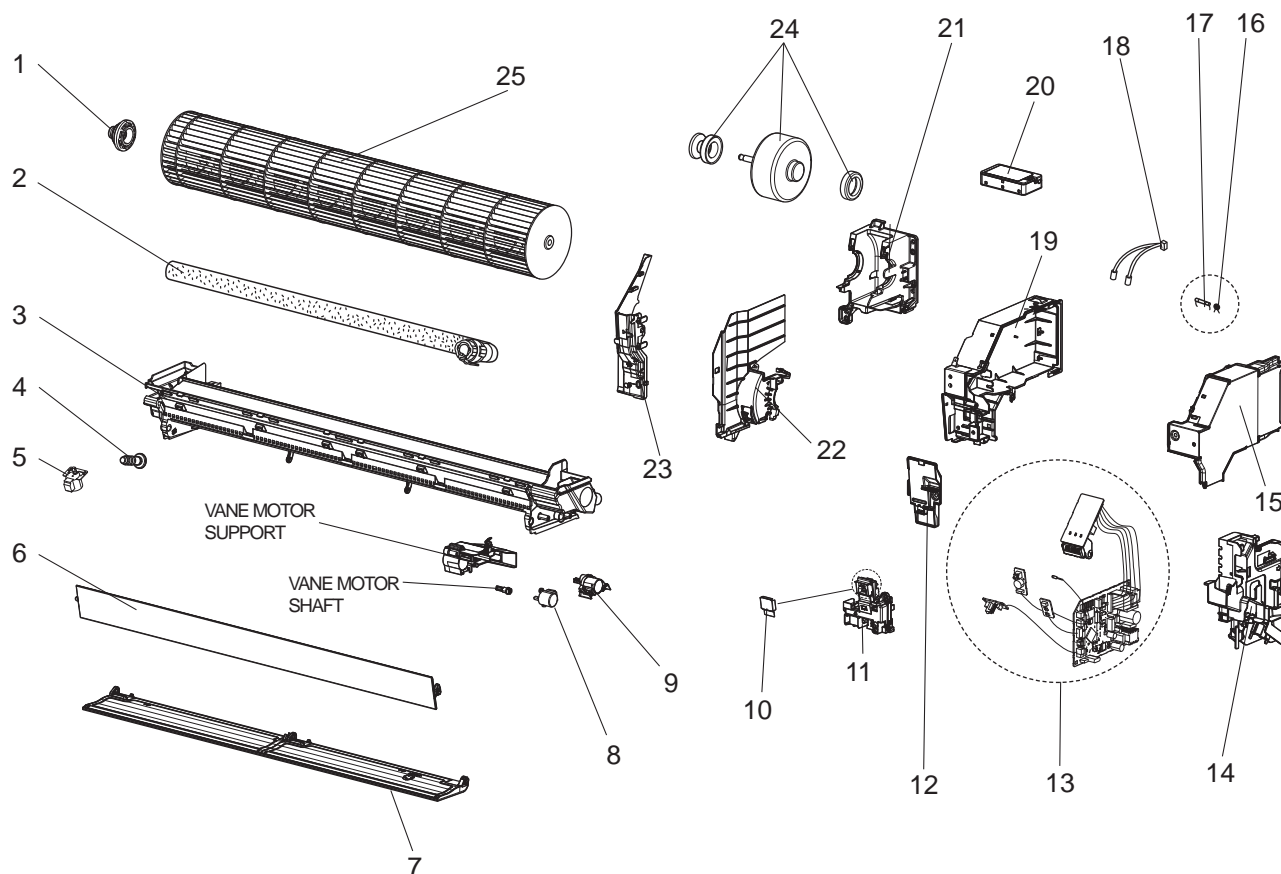
No.	Part No.	Part name	Symbol in Wiring Diagram	Q'ty/unit			Remarks
				MSZ-AP			
				25	35	42	
				VGK- <small>ER1</small>	VGK- <small>ER1</small>	VGK- <small>ER1</small>	
1	G2W 001 026	BOX ASSEMBLY		1	1	1	Not including SPEC NAME PLATE
2	G2W 001 003	PANEL (FRONT) ASSEMBLY		1	1	1	
3	G2W 001 020	PANEL (LEFT) ASSEMBLY		1	1	1	Includes No. 4,6
4	G2W 001 120	ARM HOLDER (LEFT)		1	1	1	
5	G2W 001 010	FRONT PANEL		1	1	1	
6	G2W 001 118	CATCH		2	2	2	
7	G2W 001 006	PANEL (UNDER) ASSEMBLY		1	1	1	
8	G2W 001 023	SCREW CAP		2	2	2	
9	G2W 002 120	ARM HOLDER (RIGHT)		1	1	1	
10	G2W 002 014	PANEL (RIGHT) ASSEMBLY		1	1	1	Includes No. 6,9 Not including WIRING DIAGRAM
11	G2W 001 100	AIR FILTER		2	2	2	1 PC/SET
12	G2W 001 115	INSTALLATION PLATE		1	1	1	

**1-14. ACCESSORY AND REMOTE CONTROLLER**

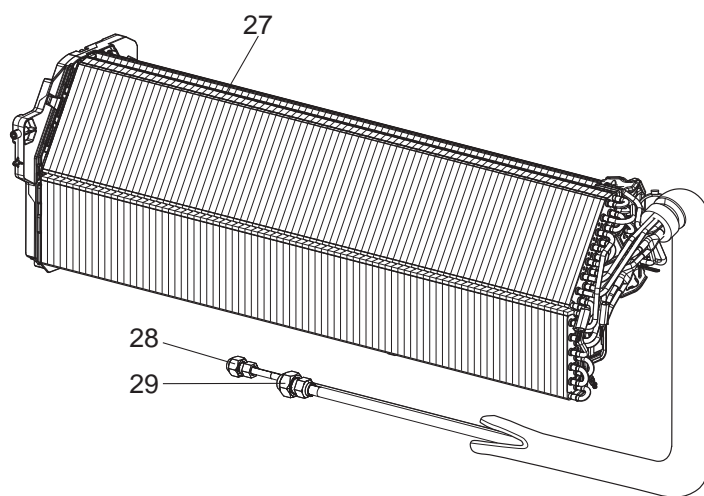
No.	Part No.	Part name	Symbol in Wiring Diagram	Q'ty/unit			Remarks
				MSZ-AP			
				25	35	42	
				VGK- <small>ER1</small>	VGK- <small>ER1</small>	VGK- <small>ER1</small>	
13	G2W 004 400	REMOTE CONTROLLER		1	1	1	SG17B

MSZ-AP25VGK-ER1 MSZ-AP35VGK-ER1 MSZ-AP42VGK-ER1

1-15. INDOOR UNIT ELECTRICAL PARTS AND FUNCTIONAL PARTS



1-16. INDOOR UNIT HEAT EXCHANGER





## 1-15. INDOOR UNIT ELECTRICAL PARTS AND FUNCTIONAL PARTS

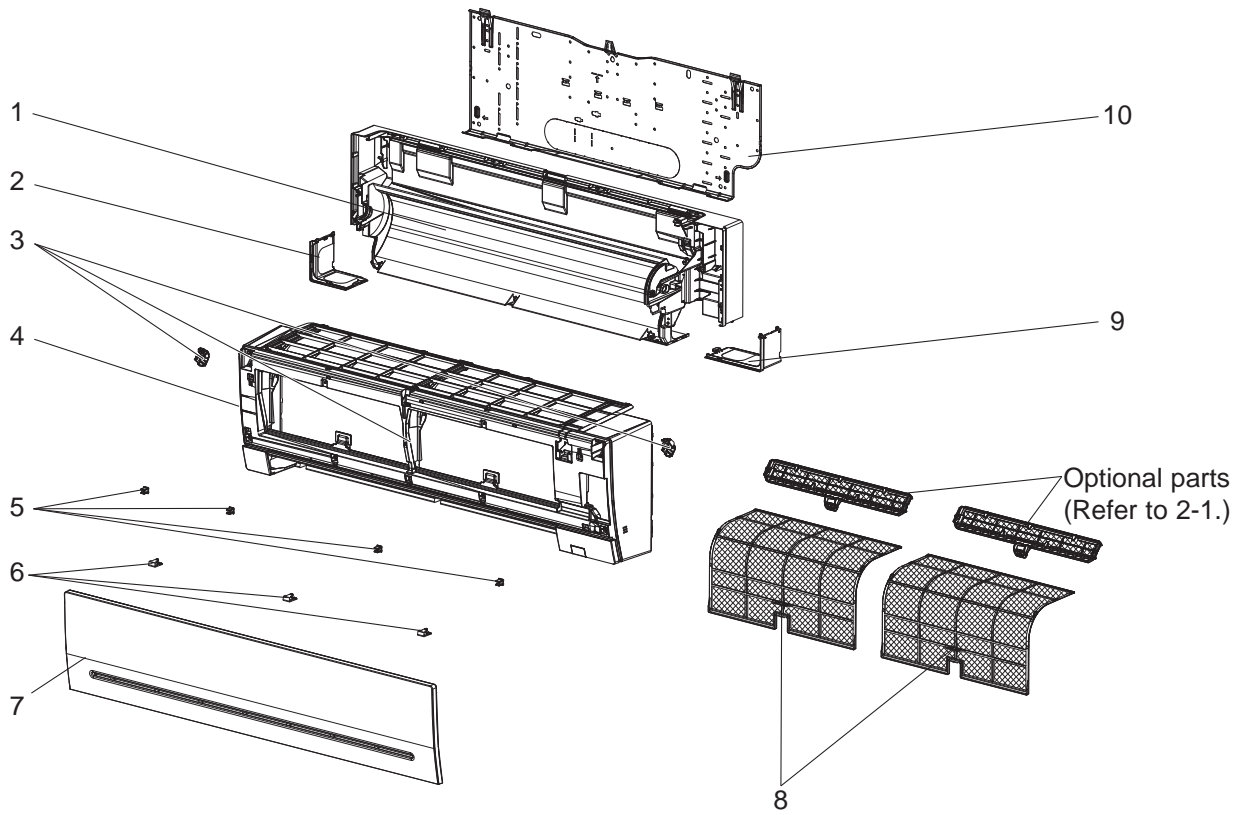
Part number that is circled is not shown in the illustration.

No.	Part No.	Part name	Symbol in Wiring Diagram	Q'ty/unit			Remarks
				MSZ-AP			
				25	35	42	
				VGK- <small>ER1</small>	VGK- <small>ER1</small>	VGK- <small>ER1</small>	
1	G2W 002 520	BEARING MOUNT ASSEMBLY		1	1	1	Includes sleeve bearing
2	G2W 001 110	DRAIN HOSE ASSEMBLY		1	1	1	520 mm
3	G2W 001 030	NOZZLE ASSEMBLY		1	1	1	
4	G2W 001 708	DRAIN CAP		1	1	1	
5	G2W 001 320	VANE MOTOR (VERTICAL)	MV3	1	1	1	RIGHT & LEFT
6	G2W 001 017	HORIZONTAL VANE (UPPER) ASSEMBLY		1	1	1	Includes shaft
7	G2W 002 017	HORIZONTAL VANE (LOWER) ASSEMBLY		1	1	1	Includes shaft
8	G2W 001 315	VANE MOTOR (HORIZONTAL) (UPPER)	MV1	1	1	1	UP & DOWN
9	G2W 002 315	VANE MOTOR (HORIZONTAL) (LOWER)	MV2	1	1	1	UP & DOWN
10	-	SWITCH SHEET		1	1	1	DY79D318H01
11	-	DISPLAY AND RECEIVER P.C. BOARD HOLDER ASSEMBLY		1	1	1	DY25A812G02
12	-	V.A. CLAMP ASSEMBLY		1	1	1	DK00G212G01
13	G2W 004 410	ELECTRONIC CONTROL P.C. BOARD		1			Includes RECEIVER P.C. BOARD, DISPLAY P.C. BOARD, SWITCH/BUZZER P.C. BOARD, TERMINAL P.C. BOARD and ROOM TEMPERATURE THERMISTOR (RT11)
	G2W 003 410				1		
	G2W 002 410					1	
14	-	CABLE GUIDE		1	1	1	DY25A811G02
15	-	PB-COVER (RIGHT)		1	1	1	DK00G213G01
16	G2W 001 425	VARISTOR	NR11	1	1	1	
17	G2W 001 422	FUSE	F11	1	1	1	T3.15AL250V
18	G2W 002 310	INDOOR COIL THERMISTOR	RT12 RT13			1	
	G2W 001 310			1	1		
19	-	PB-COVER (LEFT)		1	1	1	DK00G223G03
20	G2W 001 405	Wi-Fi INTERFACE MAC-566IFB-E		1	1	1	MAC-566IFB-E
21	-	MOTOR BED		1	1	1	SQ00C989G04
22	G2W 001 103	MOTOR BAND		1	1	1	
23	-	WATER COVER		1	1	1	SQ25Y723G02
24	G2W 001 300	INDOOR FAN MOTOR	MF	1	1	1	RC0J30-□□ Includes FAN MOTOR RUBBER MOUNT (2 PCS/SET)
25	G2W 001 500	LINE FLOW FAN		1	1	1	
②6	-	LEAD WIRE		1	1	1	SM00C948G02 Between CN151 on ELECTRONIC CONTROL P.C. BOARD and VANE MOTOR

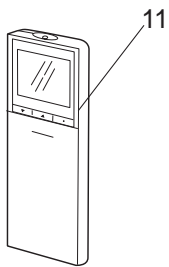
## 1-16. INDOOR UNIT HEAT EXCHANGER

No.	Part No.	Part name	Symbol in Wiring Diagram	Q'ty/unit			Remarks
				MSZ-AP			
				25	35	42	
				VGK- <small>ER1</small>	VGK- <small>ER1</small>	VGK- <small>ER1</small>	
27	G2W 001 600	INDOOR HEAT EXCHANGER		1	1		Includes No. 28, 29
	G2W 002 600					1	
28	G2W 001 605	UNION (LIQUID)		1	1	1	ø6.35
29	G2W 002 605	UNION (GAS)		1	1	1	ø9.52

**MSZ-AP60VG- E1, ET1 MSZ-AP71VG- E1, ET1**  
**1-17. INDOOR UNIT STRUCTURAL PARTS**



**1-18. ACCESSORY AND REMOTE CONTROLLER**





### 1-17. INDOOR UNIT STRUCTURAL PARTS

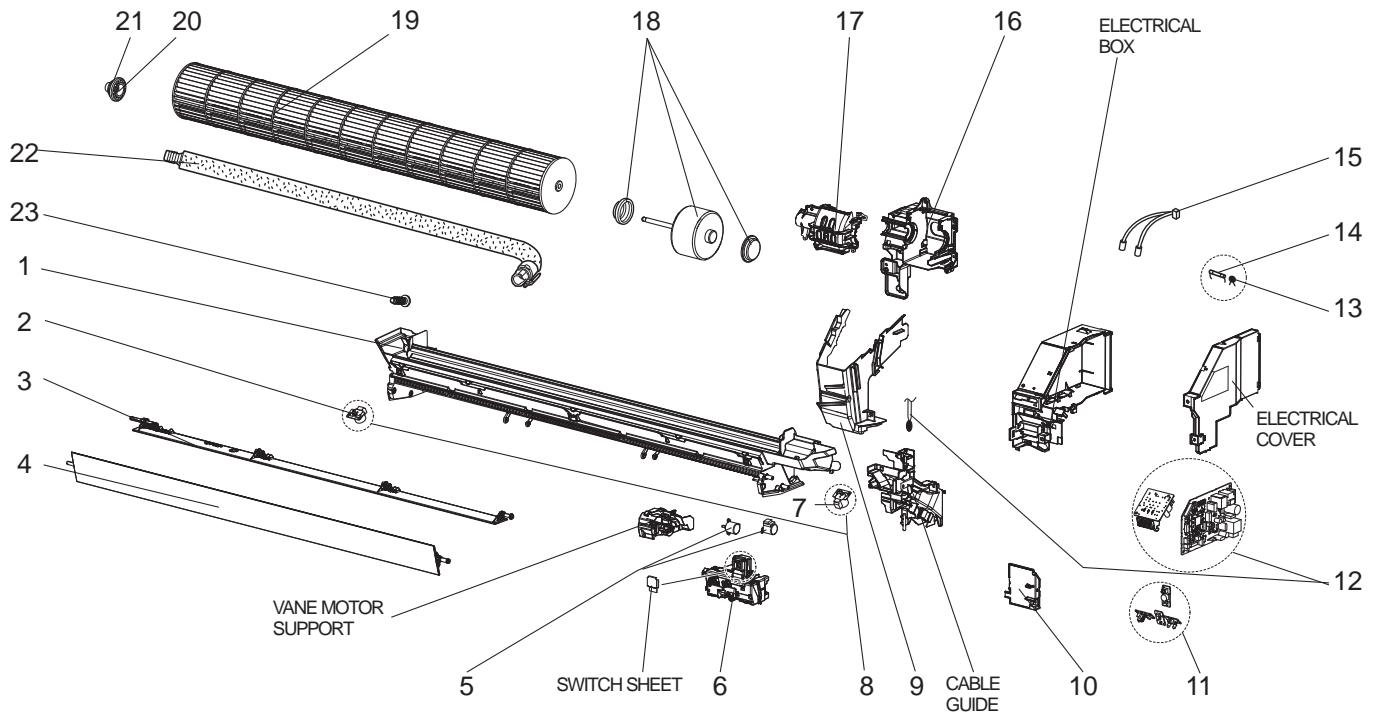
No.	Part No.	Part name	Symbol in Wiring Diagram	Q'ty/unit				Remarks
				MSZ-AP				
				60VG-		71VG-		
				E1	ET1	E1	ET1	
1	E22 61H 234	BOX ASSEMBLY		1	1	1	1	
2	E22 41G 976	CORNER BOX (LEFT)		1	1	1	1	
3	E22 61H 000	PANEL ASSEMBLY		1		1		Includes No. 4, 5, 6
	E22 63H 000				1		1	Includes No. 4, 5, 6
4	E22 62H 000	PANEL ASSEMBLY (F)		1	1	1	1	
5	E22 408 142	CATCH		4	4	4	4	4 PCS/SET
6	E22 89F 067	SCREW CAP		3	3	3	3	3 PCS/SET
7	E22 41G 010	FRONT PANEL		1	1	1	1	
8	E22 61H 100	AIR FILTER		2	2	2	2	1 PC/SET
9	E22 41G 975	CORNER BOX (RIGHT)		1	1	1	1	
10	E22 89F 970	INSTALLATION PLATE		1	1	1	1	

### 1-18. ACCESSORY AND REMOTE CONTROLLER

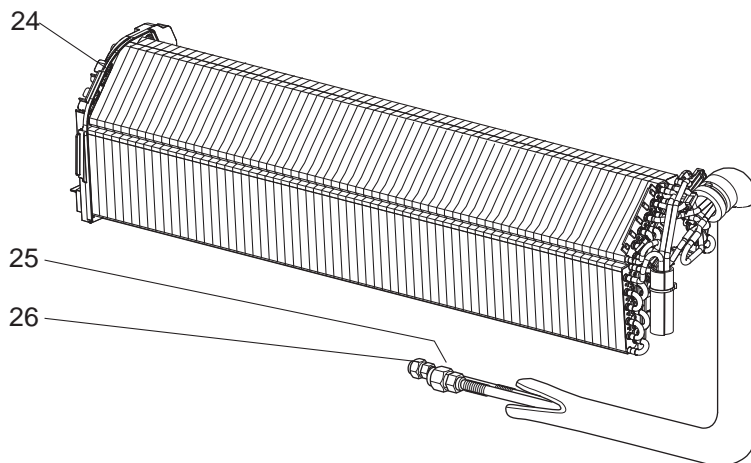
No.	Part No.	Part name	Symbol in Wiring Diagram	Q'ty/unit				Remarks
				MSZ-AP				
				60VG-		71VG-		
				E1	ET1	E1	ET1	
11	E22 41G 426	REMOTE CONTROLLER		1	1	1	1	SG18D

**MSZ-AP60VG- [E1, ET1] MSZ-AP71VG- [E1, ET1]**

**1-19. INDOOR UNIT ELECTRICAL PARTS AND FUNCTIONAL PARTS**



**1-20. INDOOR UNIT HEAT EXCHANGER**



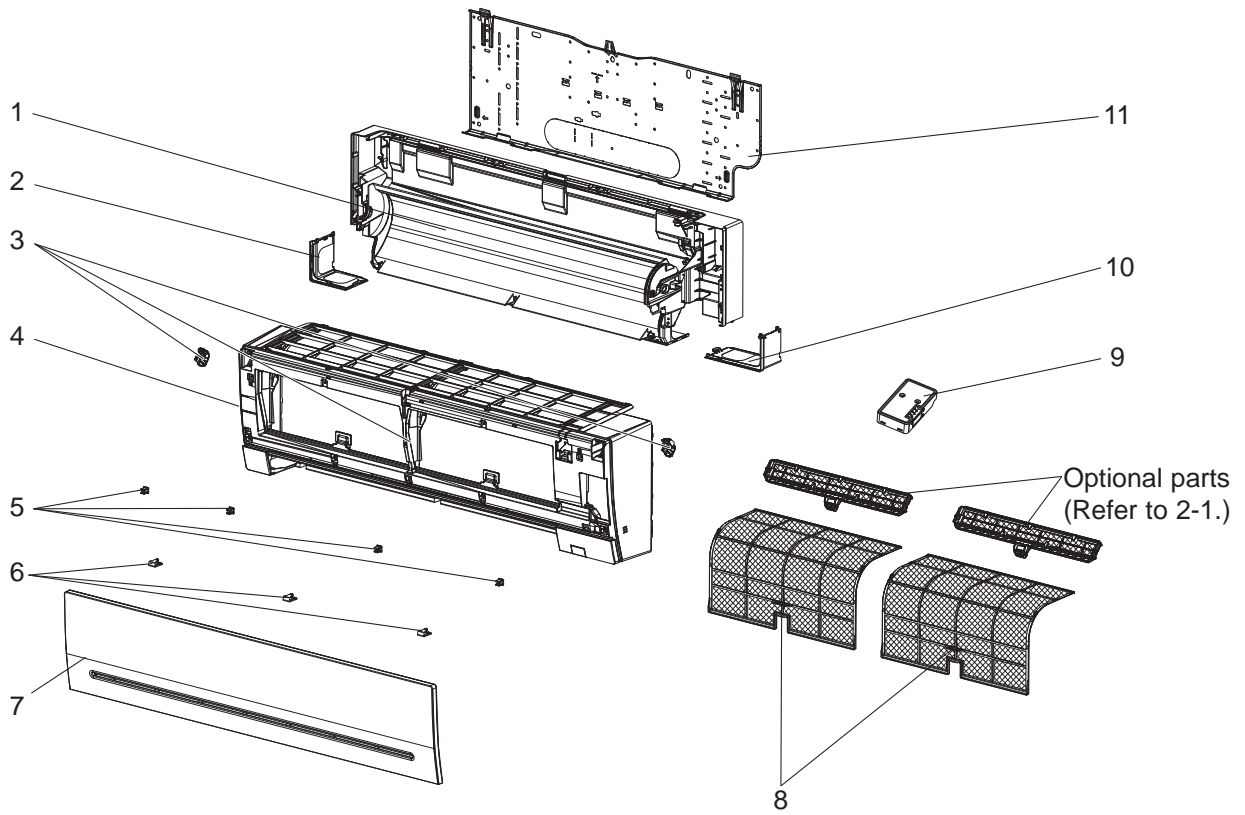
## 1-19. INDOOR UNIT ELECTRICAL PARTS AND FUNCTIONAL PARTS

No.	Part No.	Part name	Symbol in Wiring Diagram	Q'ty/unit				Remarks
				MSZ-AP				
				60VG-		71VG-		
E1	ET1	E1	ET1					
1	E22 89F 235	NOZZLE ASSEMBLY		1	1	1	1	
2	E22 82F 303	VANE MOTOR UNIT LEFT (VERTICAL)		1	1	1	1	Includes MV2
3	E22 89F 041	VANE (LOWER)		1	1	1	1	
4	E22 89F 040	VANE (UPPER)		1	1	1	1	
5	E22 A89 303	VANE MOTOR (HORIZONTAL)	MV1	2	2	2	2	UP & DOWN
6	E22 89F 095	DISPLAY AND RECEIVER P.C. BOARD HOLDER		1	1	1	1	
7	E22 84F 303	VANE MOTOR UNIT RIGHT (VERTICAL)		1	1	1	1	Includes MV2
8	E22 C32 303	VANE MOTOR (VERTICAL)	MV2	2	2	2	2	RIGHT & LEFT
9	E22 89F 541	WATER CUT		1	1			
	E22 42G 541					1	1	
10	E22 F28 784	V.A. CLAMP		1	1	1	1	
11	E22 41G 329	DISPLAY P.C. BOARD		1	1	1	1	Includes RECEIVER P.C. BOARD and SWITCH/ BUZZER P.C. BOARD
12	E22 61H 452	ELECTRONIC CONTROL P.C. BOARD		1	1			Includes TERMINAL P.C. BOARD with TERMINAL BLOCK and ROOM TEMPERATURE THERMISTOR(RT11)
	E22 67H 452					1	1	
13	E22 K90 385	VARISTOR	NR11	1	1	1	1	
14	E22 A49 382	FUSE	F11	1	1	1	1	T3.15AL250V
15	E22 41G 307	INDOOR COIL THERMISTOR	RT12,RT13	1	1			
	E22 R86 307					1	1	
16	E22 90F 333	MOTOR BED		1	1	1	1	
17	E22 89F 333	MOTOR BAND		1	1	1	1	
18	E22 89F 300	INDOOR FAN MOTOR	MF	1	1	1	1	RC0J56-□□ Includes FAN MOTOR RUBBER MOUNT (2 PCS/SET)
19	E22 F28 302	LINE FLOW FAN		1	1	1	1	
20	E22 001 504	SLEEVE BEARING		1	1	1	1	
21	E22 751 509	BEARING MOUNT ASSEMBLY		1	1	1	1	
22	E22 T20 702	DRAIN HOSE		1	1	1	1	
23	—	DRAIN CAP		1	1	1	1	SU26R611H01

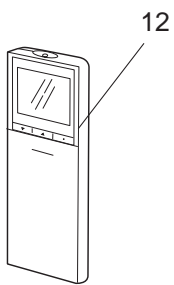
## 1-20. INDOOR UNIT HEAT EXCHANGER

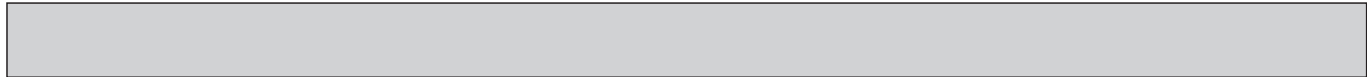
No.	Part No.	Part name	Symbol in Wiring Diagram	Q'ty/unit				Remarks
				MSZ-AP				
				60VG-		71VG-		
E1	ET1	E1	ET1					
24	E22 61H 620	INDOOR HEAT EXCHANGER		1	1			
	E22 67H 620					1	1	
25	E22 151 667	UNION (GAS)		1	1	1	1	ø6.35
26	E22 155 666	UNION (LIQUID)		1	1	1	1	ø12.7

**MSZ-AP60VGK- [E1], [ET1] MSZ-AP71VGK- [E1], [ET1]**  
**1-21. INDOOR UNIT STRUCTURAL PARTS**



**1-22. ACCESSORY AND REMOTE CONTROLLER**





### 1-21. INDOOR UNIT STRUCTURAL PARTS

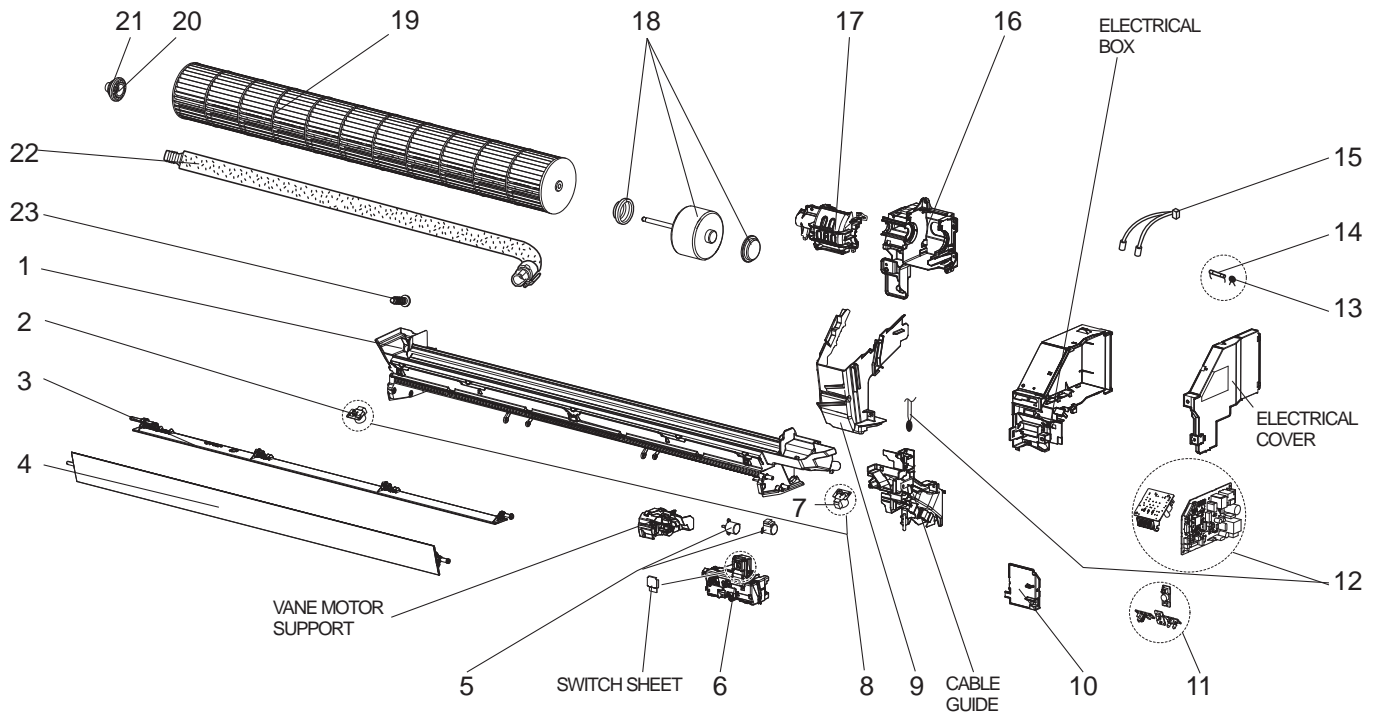
No.	Part No.	Part name	Symbol in Wiring Diagram	Q'ty/unit				Remarks
				MSZ-AP				
				60VGK-		71VGK-		
E1	ET1	E1	ET1					
1	E22 61H 234	BOX ASSEMBLY		1	1	1	1	
2	E22 41G 976	CORNER BOX (LEFT)		1	1	1	1	
3	E22 61H 000	PANEL ASSEMBLY		1		1		Includes No. 4, 5, 6
	E22 63H 000				1		1	Includes No. 4, 5, 6
4	E22 62H 000	PANEL ASSEMBLY (F)		1	1	1	1	
5	E22 408 142	CATCH		4	4	4	4	4 PCS/SET
6	E22 89F 067	SCREW CAP		3	3	3	3	3 PCS/SET
7	E22 41G 010	FRONT PANEL		1	1	1	1	
8	E22 61H 100	AIR FILTER		2	2	2	2	1 PC/SET
9	E22 61H 457	Wi-Fi INTERFACE		1	1	1	1	MAC-568IFB2_516
10	E22 41G 975	CORNER BOX (RIGHT)		1	1	1	1	
11	E22 89F 970	INSTALLATION PLATE		1	1	1	1	

### 1-22. ACCESSORY AND REMOTE CONTROLLER

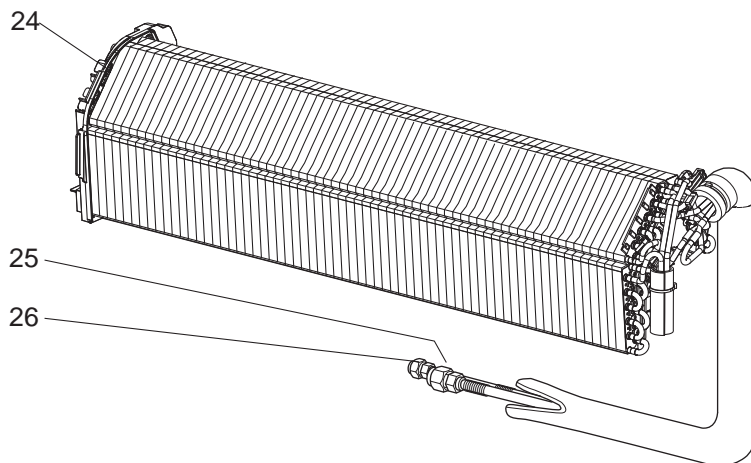
No.	Part No.	Part name	Symbol in Wiring Diagram	Q'ty/unit				Remarks
				MSZ-AP				
				60VGK-		71VGK-		
E1	ET1	E1	ET1					
12	E22 41G 426	REMOTE CONTROLLER		1	1	1	1	SG18D

**MSZ-AP60VGK- [E1, ET1] MSZ-AP71VGK- [E1, ET1]**

**1-23. INDOOR UNIT ELECTRICAL PARTS AND FUNCTIONAL PARTS**



**1-24. INDOOR UNIT HEAT EXCHANGER**





### 1-23. INDOOR UNIT ELECTRICAL PARTS AND FUNCTIONAL PARTS

No.	Part No.	Part name	Symbol in Wiring Diagram	Q'ty/unit				Remarks
				MSZ-AP				
				60VGK-		71VGK-		
E1	ET1	E1	ET1					
1	E22 89F 235	NOZZLE ASSEMBLY		1	1	1	1	
2	E22 82F 303	VANE MOTOR UNIT LEFT (VERTICAL)		1	1	1	1	Includes MV2
3	E22 89F 041	VANE (LOWER)		1	1	1	1	
4	E22 89F 040	VANE (UPPER)		1	1	1	1	
5	E22 A89 303	VANE MOTOR (HORIZONTAL)	MV1	2	2	2	2	UP & DOWN
6	E22 89F 095	DISPLAY AND RECEIVER P.C. BOARD HOLDER		1	1	1	1	
7	E22 84F 303	VANE MOTOR UNIT RIGHT (VERTICAL)		1	1	1	1	Includes MV2
8	E22 C32 303	VANE MOTOR (VERTICAL)	MV2	2	2	2	2	RIGHT & LEFT
9	E22 89F 541	WATER CUT		1	1			
	E22 42G 541					1	1	
10	E22 F28 784	V.A. CLAMP		1	1	1	1	
11	E22 41G 329	DISPLAY P.C. BOARD		1	1	1	1	Includes RECEIVER P.C. BOARD and SWITCH/ BUZZER P.C. BOARD
12	E22 61H 452	ELECTRONIC CONTROL P.C. BOARD		1	1			Includes TERMINAL P.C. BOARD with TERMINAL BLOCK and ROOM TEMPERATURE THERMISTOR(RT11)
	E22 67H 452					1	1	
13	E22 K90 385	VARISTOR	NR11	1	1	1	1	
14	E22 A49 382	FUSE	F11	1	1	1	1	T3.15AL250V
15	E22 41G 307	INDOOR COIL THERMISTOR	RT12,RT13	1	1			
	E22 R86 307					1	1	
16	E22 90F 333	MOTOR BED		1	1	1	1	
17	E22 89F 333	MOTOR BAND		1	1	1	1	
18	E22 89F 300	INDOOR FAN MOTOR	MF	1	1	1	1	RC0J56-□□ Includes FAN MOTOR RUBBER MOUNT (2 PCS/SET)
19	E22 F28 302	LINE FLOW FAN		1	1	1	1	
20	E22 001 504	SLEEVE BEARING		1	1	1	1	
21	E22 751 509	BEARING MOUNT ASSEMBLY		1	1	1	1	
22	E22 T20 702	DRAIN HOSE		1	1	1	1	
23	—	DRAIN CAP		1	1	1	1	SU26R611H01

### 1-24. INDOOR UNIT HEAT EXCHANGER

No.	Part No.	Part name	Symbol in Wiring Diagram	Q'ty/unit				Remarks
				MSZ-AP				
				60VGK-		71VGK-		
E1	ET1	E1	ET1					
24	E22 61H 620	INDOOR HEAT EXCHANGER		1	1			
	E22 67H 620					1	1	
25	E22 151 667	UNION (GAS)		1	1	1	1	ø6.35
26	E22 155 666	UNION (LIQUID)		1	1	1	1	ø12.7

## 2-1. AIR CLEANING FILTER (SILVER-IONIZED AIR PURIFIER FILTER)

Every 3 months:

- Remove dirt by a vacuum cleaner.

**When dirt cannot be removed by vacuum cleaning:**

- Soak the filter and its frame in lukewarm water before rinsing it.
- After washing, dry it well in shade. Install all tabs of the air filter.

Every year:

- Replace it with a new air cleaning filter for best performance.

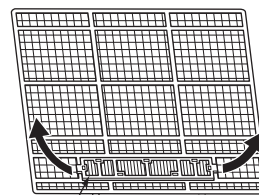
**NOTE 1:** Clean the filters regularly for best performance and to reduce power consumption.

**NOTE 2:** Dirty filters cause condensation in the air conditioner which will contribute to the growth of fungi such as mold. It is therefore recommended to clean air filters every 2 weeks.

Model	Part No.
MSZ-AP25VG MSZ-AP35VG MSZ-AP42VG MSZ-AP50VG MSZ-AP25VGK MSZ-AP35VGK MSZ-AP42VGK MSZ-AP50VGK	MAC-2370FT-E
MSZ-AP60VG MSZ-AP71VG MSZ-AP60VGK MSZ-AP71VGK	MAC-2360FT-E

### MSZ-AP25/35/42/50VG(K)

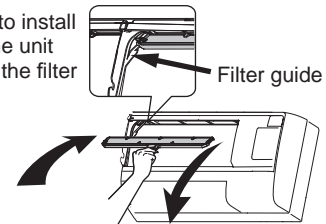
Pull to remove from the air filter



Air cleaning filter  
(Silver-ionized air purifier filter)

### MSZ-AP60/71VG(K)

Push to install  
into the unit  
along the filter  
guide.



Pull to remove from the unit.

# MITSUBISHI ELECTRIC CORPORATION

HEAD OFFICE: TOKYO BUILDING, 2-7-3, MARUNOUCHI, CHIYODA-KU, TOKYO 100-8310, JAPAN

© Copyright 2017 MITSUBISHI ELECTRIC CORPORATION

Issued: Mar. 2019. No. OBB788 REVISED EDITION-B

Issued: May 2018. No. OBB788 REVISED EDITION-A

Published: Dec. 2017. No. OBB788

Made in Japan

Specifications are subject to change without notice.