

**Revision A:**

• MUZ-AP25/35/42VG- [E2], [ET2], [ER2],  
MUZ-AP25/35/42VGH- [E2] and MUZ-  
AP60/71VG- [E1], [ET1] have been  
added.

OBB789 is void.

## OUTDOOR UNIT

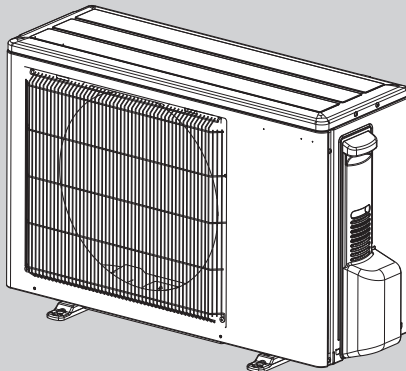
**No. OBB789**  
**REVISED EDITION-A**

# PARTS CATALOG

### Models

<b>MUZ-AP25VG</b> - [E1], [ET1], [E2], [ET2], [ER2]	<b>MUZ-AP25VGH</b> - [E1], [E2]
<b>MUZ-AP35VG</b> - [E1], [ET1], [E2], [ET2], [ER2]	<b>MUZ-AP35VGH</b> - [E1], [E2]
<b>MUZ-AP42VG</b> - [E1], [ET1], [E2], [ET2], [ER2]	<b>MUZ-AP42VGH</b> - [E1], [E2]
<b>MUZ-AP50VG</b> - [E1], [ET1]	<b>MUZ-AP50VGH</b> - [E1]
<b>MUZ-AP60VG</b> - [E1], [ET1]	
<b>MUZ-AP71VG</b> - [E1], [ET1]	

MUZ-AP25VG MUZ-AP25VGH  
MUZ-AP35VG MUZ-AP35VGH  
MUZ-AP42VG MUZ-AP42VGH



### CONTENTS

1. SERVICE PARTS LIST..... 2

**SERVICE MANUAL (OBH789)**

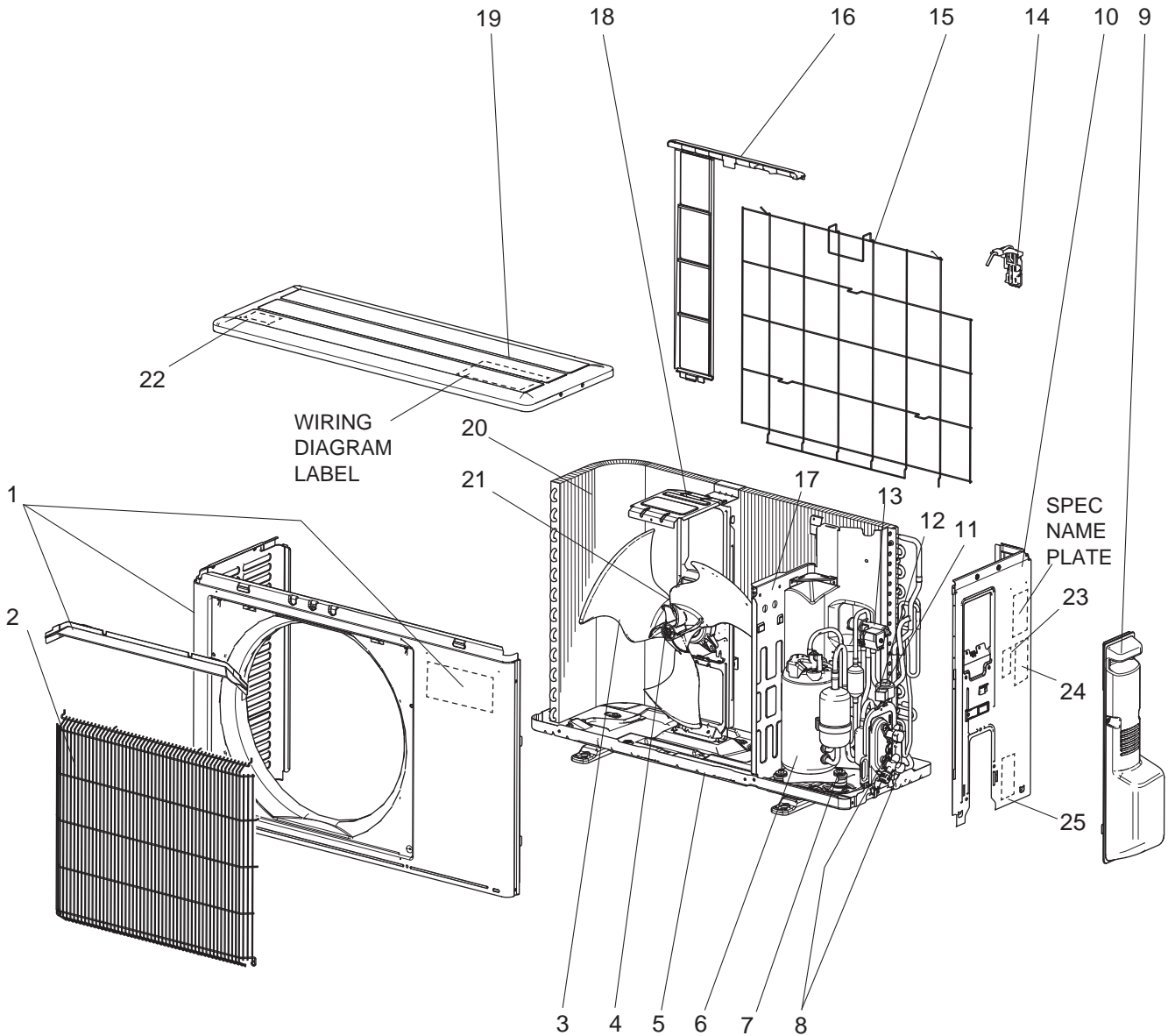
**Revision A:**

• MUZ-AP25/35/42VG- [E2], [ET2], [ER2], MUZ-AP25/35/42VGH- [E2] and MUZ-AP60/71VG- [E1], [ET1] have been added.

# 1 SERVICE PARTS LIST

MUZ-AP25VG -[E1], [ET1] MUZ-AP35VG -[E1], [ET1]

## 1-1. OUTDOOR UNIT STRUCTURAL PARTS AND FUNCTIONAL PARTS

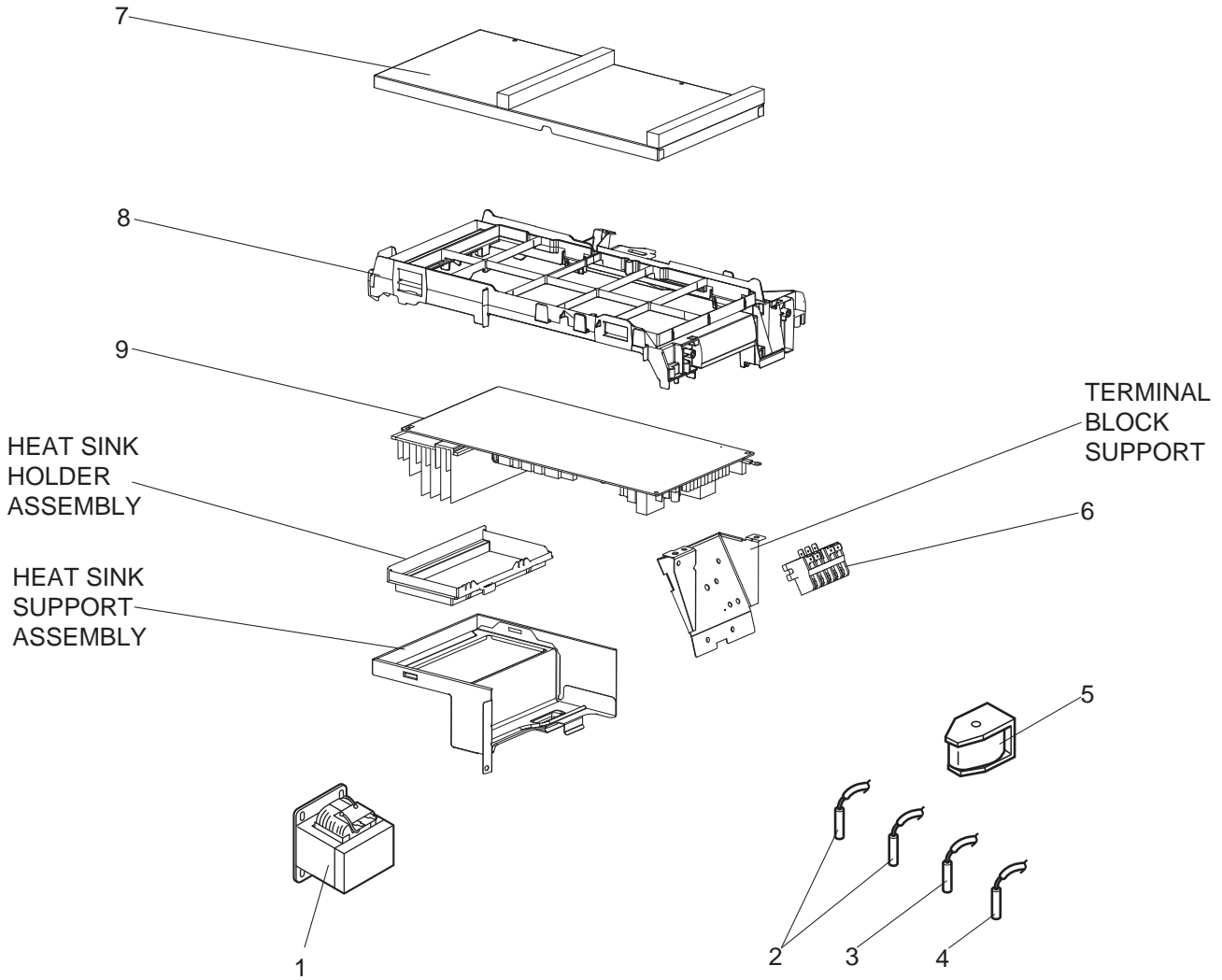


## 1-1. OUTDOOR UNIT STRUCTURAL PARTS AND FUNCTIONAL PARTS

Part numbers that are circled are not shown in the illustration.

No.	Part No.	Part Name	Symbol in Wiring Diagram	Q'ty/unit				Remarks
				MUZ-AP				
				25VG-		35VG-		
				E1	ET1	E1	ET1	
1	G2W 004 050	CABINET		1	1	1	1	Includes ice guard, trade mark
2	G2W 001 063	WIRE GRILLE		1	1	1	1	
3	G2W 001 550	PROPELLER FAN		1	1	1	1	
4	G2W 001 753	PROPELLER FAN NUT		1	1	1	1	
5	G2W 001 055	BASE ASSEMBLY		1	1	1	1	
6	G2W 001 650	COMPRESSOR	MC	1	1	1	1	KVB073FYXMC
7	G2W 001 773	COMPRESSOR RUBBER SET		3	3	3	3	3 RUBBERS/SET
8	G2W 001 655	STOP VALVE ASSEMBLY		1	1	1	1	Gas: ø9.52 Liquid: ø6.35 Includes pipes
9	G2W 001 053	SERVICE PANEL ASSEMBLY		1	1	1	1	
10	G2W 001 060	BACK PANEL ASSEMBLY		1	1	1	1	Not including SPEC NAME PLATE or No. 23 to 25
11	G2W 001 668	EXPANSION VALVE ASSEMBLY		1	1	1	1	Includes capillary tube ø4.0xø2.4x240
12	G2W 001 362	EXPANSION VALVE COIL	LEV	1	1	1	1	
13	G2W 001 665	4-WAY VALVE		1	1	1	1	
14	————	THERMO HOLDER (AMBIENT)		1	1	1	1	DK25A972G03
15	G2W 001 067	CONDENSER WIRE NET ASSEMBLY		1	1	1	1	
16	G2W 002 065	CONDENSER NET		1	1	1	1	
17	G2W 001 150	SEPARATOR		1	1	1	1	
18	G2W 001 154	MOTOR SUPPORT		1	1	1	1	
19	G2W 001 057	TOP PANEL ASSEMBLY		1	1	1	1	Not including WIRING DIAGRAM LABEL or No. 22
20	G2W 005 660	OUTDOOR HEAT EXCHANGER		1	1			
	G2W 001 660				1	1		
21	G2W 001 350	OUTDOOR FAN MOTOR	MF	1	1	1	1	RC0J50-□□
22	————	LABEL		1	1	1	1	JG79R840H02
23	————	LABEL		1	1	1	1	JG79B901H01
24	————	LABEL		1	1	1	1	JG79R837H01
25	————	LABEL		1	1	1	1	DG79T472H01
②6	G2W 001 371	COMPRESSOR LEAD WIRE ASSEMBLY		1	1	1	1	
②7	G2W 001 765	DRAIN SOCKET		1	1	1	1	

**MUZ-AP25VG -E1, ET1 MUZ-AP35VG -E1, ET1**  
**1-2. OUTDOOR UNIT ELECTRICAL PARTS**



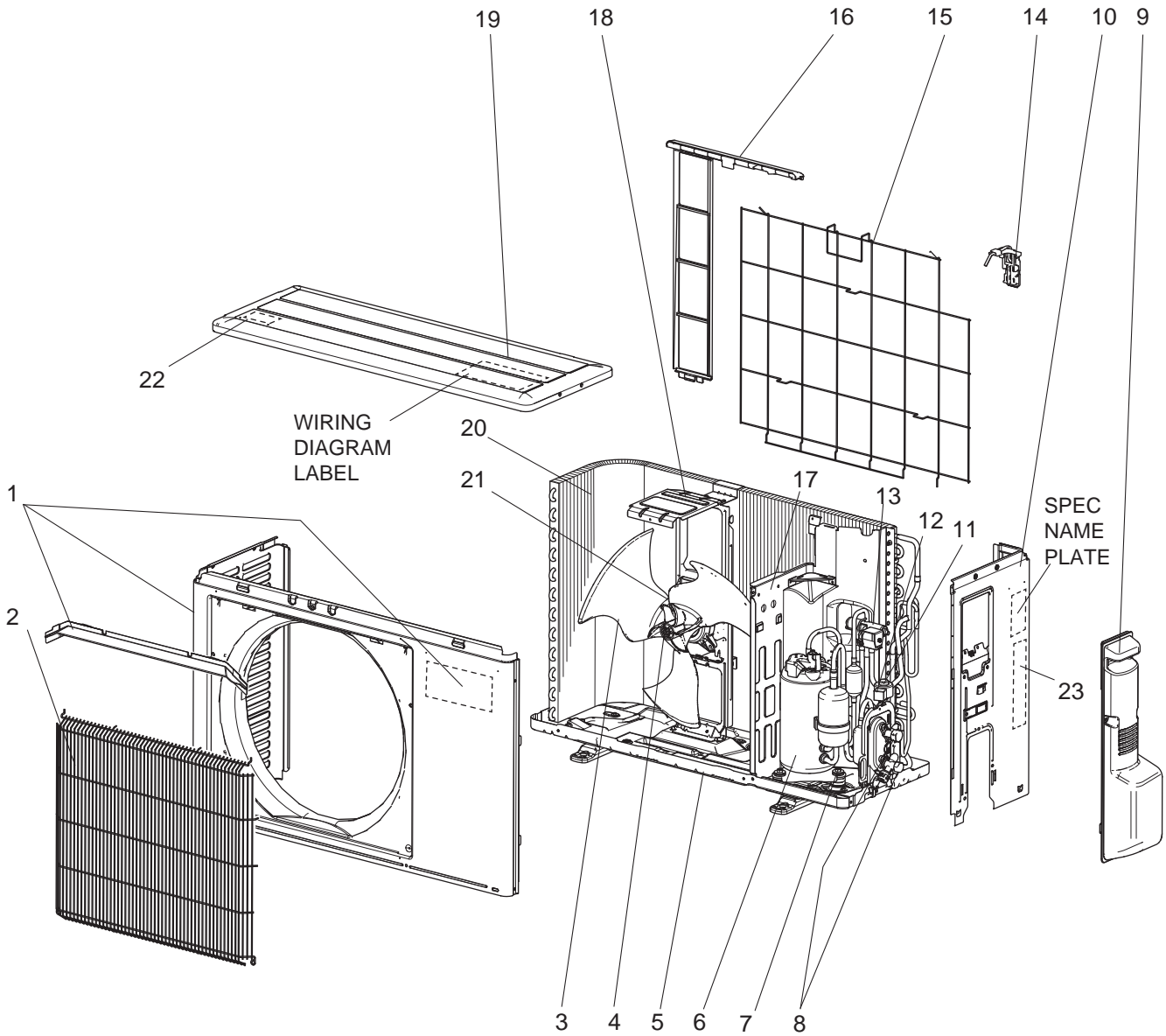


### 1-2. OUTDOOR UNIT ELECTRICAL PARTS

No.	Part No.	Part Name	Symbol in Wiring Diagram	Q'ty/unit				Remarks
				MUZ-AP				
				25VG-		35VG-		
				E1	ET1	E1	ET1	
1	G2W 001 359	REACTOR	L61	1	1			
	G2W 002 359					1	1	
2	G2W 001 353	THERMISTOR SET	RT61, RT62	1	1	1	1	DEFROST, DISCHARGE
3	G2W 001 355	AMBIENT TEMPERATURE THERMISTOR	RT65	1	1	1	1	
4	G2W 001 357	OUTDOOR HEAT EXCHANGER TEMPERATURE THERMISTOR	RT68	1	1	1	1	
5	G2W 001 365	R.V. COIL ASSEMBLY	21S4	1	1	1	1	
6	G2W 001 373	TERMINAL BLOCK	TB1	1	1	1	1	5P (S1, S2, S3, L, N)
7	_____	P.C. BOARD COVER		1	1	1	1	DY02B869G01, SQ33C889H05 (2 PCS)
8	_____	P.C. BOARD SUPPORT		1	1	1	1	DY25A804G02
9	G2W 006 460	INVERTER P.C. BOARD ASSEMBLY		1	1			Includes heat sink and RT64
	G2W 005 460					1	1	

MUZ-AP25VG -E2, ET2, ER2 MUZ-AP35VG -E2, ET2, ER2

1-3. OUTDOOR UNIT STRUCTURAL PARTS AND FUNCTIONAL PARTS

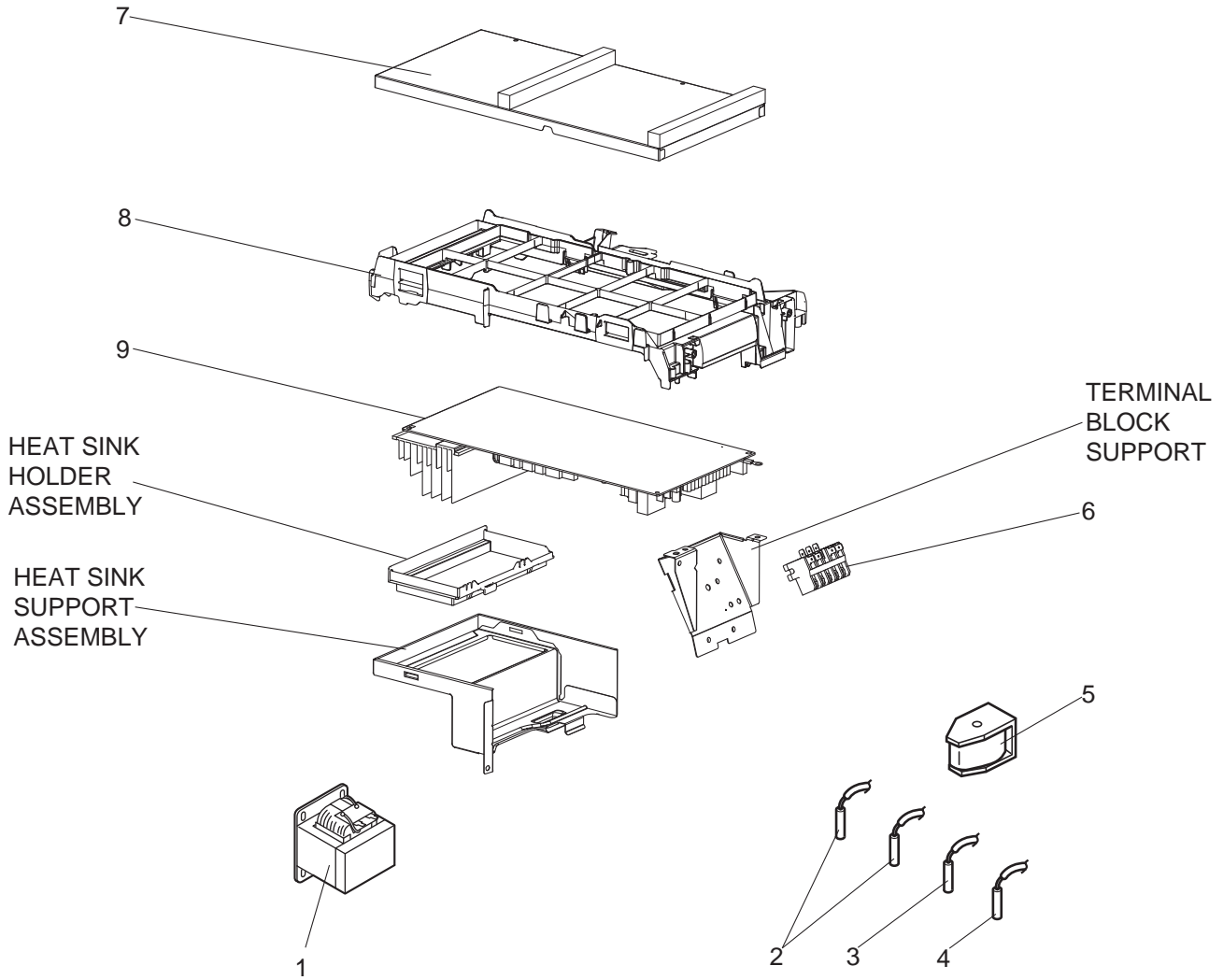


### 1-3. OUTDOOR UNIT STRUCTURAL PARTS AND FUNCTIONAL PARTS

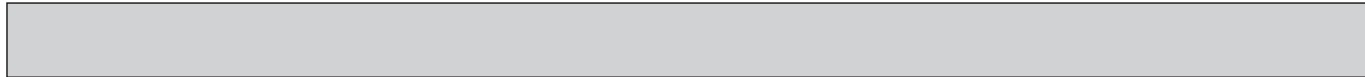
Part numbers that are circled are not shown in the illustration.

No.	Part No.	Part Name	Symbol in Wiring Diagram	Q'ty/unit						Remarks
				MUZ-AP						
				25VG-			35VG-			
				E2	ET2	ER2	E2	ET2	ER2	
1	G2W 004 050	CABINET		1	1	1	1	1	1	Includes ice guard, trade mark
2	G2W 001 063	WIRE GRILLE		1	1	1	1	1	1	
3	G2W 001 550	PROPELLER FAN		1	1	1	1	1	1	
4	G2W 001 753	PROPELLER FAN NUT		1	1	1	1	1	1	
5	G2W 001 055	BASE ASSEMBLY		1	1	1	1	1	1	
6	G2W 001 650	COMPRESSOR	MC	1	1	1	1	1	1	KVB073FYXMC
7	G2W 001 773	COMPRESSOR RUBBER SET		3	3	3	3	3	3	3 RUBBERS/SET
8	G2W 001 655	STOP VALVE ASSEMBLY		1	1	1	1	1	1	Gas: ø9.52 Liquid: ø6.35 Includes pipes
9	G2W 001 053	SERVICE PANEL ASSEMBLY		1	1	1	1	1	1	
10	G2W 001 060	BACK PANEL ASSEMBLY		1	1	1	1	1	1	Not including SPEC NAME PLATE or No. 23
11	G2W 001 668	EXPANSION VALVE ASSEMBLY		1	1	1	1	1	1	Includes capillary tube ø4.0xø2.4x240
12	G2W 001 362	EXPANSION VALVE COIL	LEV	1	1	1	1	1	1	
13	G2W 002 665	4-WAY VALVE		1	1	1	1	1	1	
14	————	THERMO HOLDER (AMBIENT)		1	1	1	1	1	1	DK25A972G03
15	G2W 001 067	CONDENSER WIRE NET ASSEMBLY		1	1	1	1	1	1	
16	G2W 002 065	CONDENSER NET		1	1	1	1	1	1	
17	G2W 001 150	SEPARATOR		1	1	1	1	1	1	
18	G2W 001 154	MOTOR SUPPORT		1	1	1	1	1	1	
19	G2W 001 057	TOP PANEL ASSEMBLY		1	1	1	1	1	1	Not including WIRING DIAGRAM LABEL or No. 22
20	G2W 005 660 G2W 001 660	OUTDOOR HEAT EXCHANGER		1	1	1				
21	G2W 002 350	OUTDOOR FAN MOTOR	MF	1	1	1	1	1	1	RC0J55-□□
22	————	LABEL		1	1	1	1	1	1	JG79R840H02
23	————	LABEL		1		1	1		1	DG79T490H01
					1			1		DG79T490H02
②④	G2W 001 371	COMPRESSOR LEAD WIRE ASSEMBLY		1	1	1	1	1	1	
②⑤	G2W 001 765	DRAIN SOCKET		1	1	1	1	1	1	

**MUZ-AP25VG - [E2], [ET2], [ER2] MUZ-AP35VG - [E2], [ET2], [ER2]**  
**1-4. OUTDOOR UNIT ELECTRICAL PARTS**





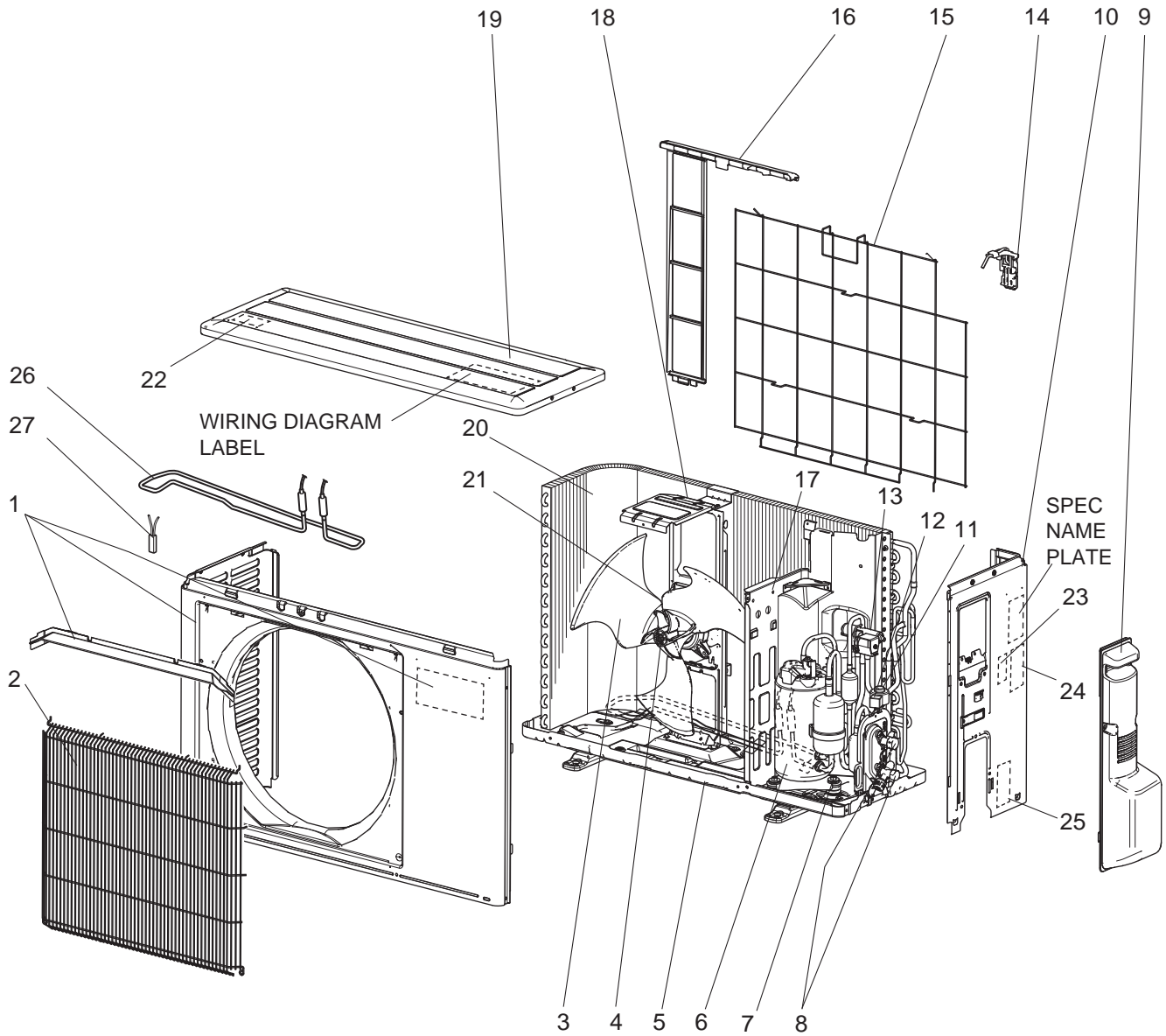


**1-4. OUTDOOR UNIT ELECTRICAL PARTS**

No.	Part No.	Part Name	Symbol in Wiring Diagram	Q'ty/unit						Remarks
				MUZ-AP						
				25VG-			35VG-			
				E2	ET2	ER2	E2	ET2	ER2	
1	G2W 001 359	REACTOR	L61	1	1	1				
	G2W 002 359						1	1	1	
2	G2W 001 353	THERMISTOR SET	RT61, RT62	1	1	1	1	1	1	DEFROST, DISCHARGE
3	G2W 001 355	AMBIENT TEMPERATURE THERMISTOR	RT65	1	1	1	1	1	1	
4	G2W 001 357	OUTDOOR HEAT EXCHANGER TEMPERATURE THERMISTOR	RT68	1	1	1	1	1	1	
5	G2W 003 365	R.V. COIL ASSEMBLY	21S4	1	1	1	1	1	1	
6	G2W 001 373	TERMINAL BLOCK	TB1	1	1	1	1	1	1	5P (S1, S2, S3, L, N)
7	_____	P.C. BOARD COVER		1	1	1	1	1	1	DY02B869G01, SQ33C889H05 (2 PCS)
8	_____	P.C. BOARD SUPPORT		1	1	1	1	1	1	DY25A804G02
9	G2W 012 460	INVERTER P.C. BOARD ASSEMBLY		1	1	1				Includes heat sink and RT64
	G2W 014 460						1	1	1	

MUZ-AP25VGH -E1 MUZ-AP35VGH -E1

1-5. OUTDOOR UNIT STRUCTURAL PARTS AND FUNCTIONAL PARTS

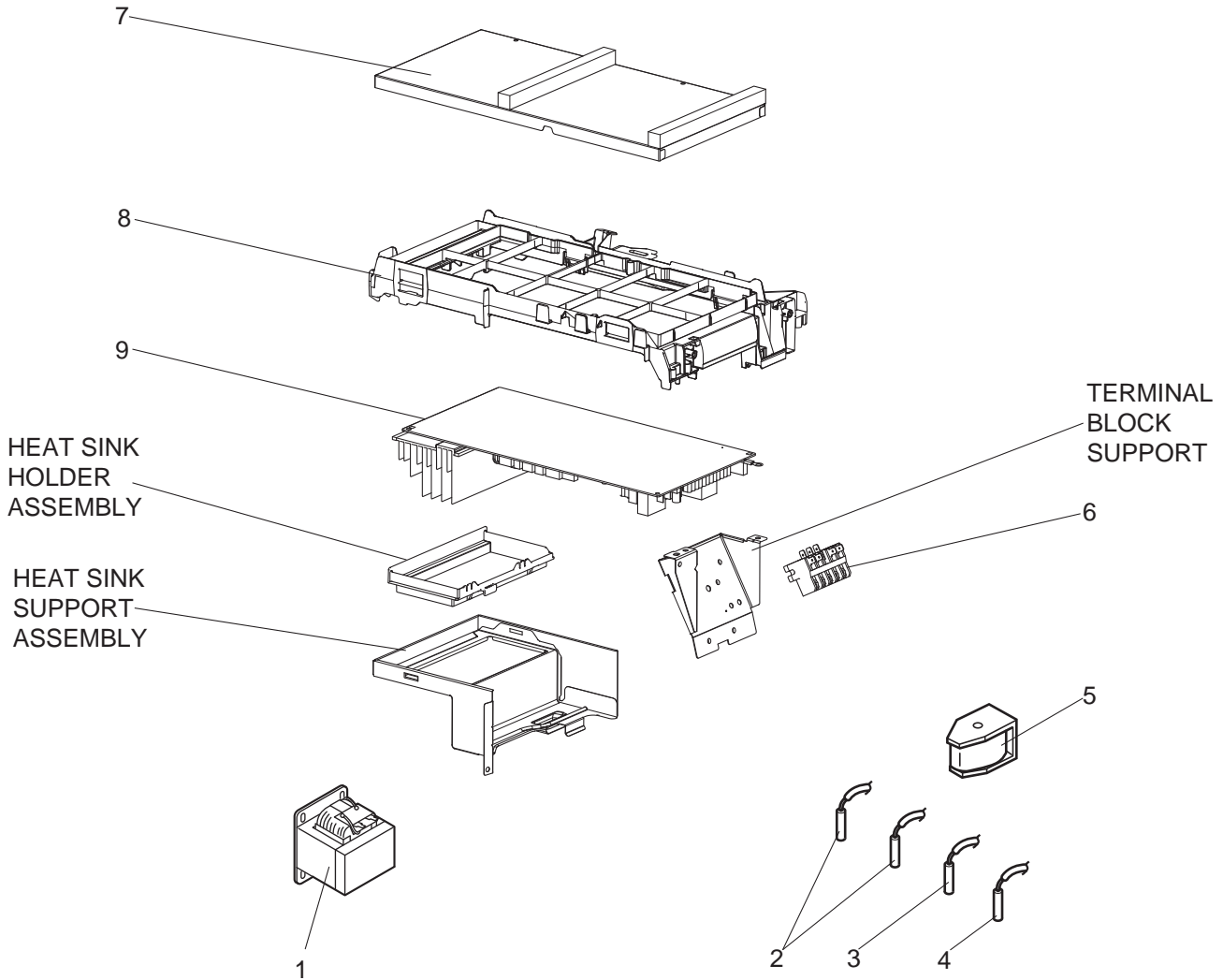


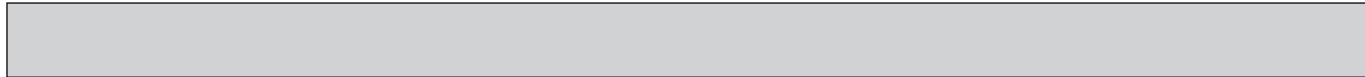
## 1-5. OUTDOOR UNIT STRUCTURAL PARTS AND FUNCTIONAL PARTS

Part number that is circled is not shown in the illustration.

No.	Part No.	Part Name	Symbol in Wiring Diagram	Q'ty/unit		Remarks
				MUZ-AP		
				25VGH- E1	35VGH- E1	
1	G2W 004 050	CABINET		1	1	Includes ice guard, trade mark
2	G2W 001 063	WIRE GRILLE		1	1	
3	G2W 001 550	PROPELLER FAN		1	1	
4	G2W 001 753	PROPELLER FAN NUT		1	1	
5	G2W 002 055	BASE ASSEMBLY		1	1	
6	G2W 001 650	COMPRESSOR	MC	1	1	KVB073FYXMC
7	G2W 001 773	COMPRESSOR RUBBER SET		3	3	3 RUBBERS/SET
8	G2W 001 655	STOP VALVE ASSEMBLY		1	1	Gas: ø9.52 Liquid: ø6.35 Includes pipes
9	G2W 001 053	SERVICE PANEL ASSEMBLY		1	1	
10	G2W 001 060	BACK PANEL ASSEMBLY		1	1	Not including SPEC NAME PLATE or No. 23 to 25
11	G2W 001 668	EXPANSION VALVE ASSEMBLY		1	1	Includes capillary tube ø4.0xø2.4x240
12	G2W 001 362	EXPANSION VALVE COIL	LEV	1	1	
13	G2W 001 665	4-WAY VALVE		1	1	
14	————	THERMO HOLDER (AMBIENT)		1	1	DK25A972G03
15	G2W 001 067	CONDENSER WIRE NET ASSEMBLY		1	1	
16	G2W 002 065	CONDENSER NET		1	1	
17	G2W 002 150	SEPARATOR		1	1	
18	G2W 001 154	MOTOR SUPPORT		1	1	
19	G2W 001 057	TOP PANEL ASSEMBLY		1	1	Not including WIRING DIAGRAM LABEL or No. 22
20	G2W 005 660	OUTDOOR HEAT EXCHANGER		1		
	G2W 001 660				1	
21	G2W 001 350	OUTDOOR FAN MOTOR	MF	1	1	RC0J50-□□
22	————	LABEL		1	1	JG79R840H02
23	————	LABEL		1	1	JG79B901H01
24	————	LABEL		1	1	JG79R837H01
25	————	LABEL		1	1	DG79T472H01
26	G2W 001 368	DEFROST HEATER	H	1	1	
27	G2W 001 377	HEATER PROTECTOR ASSEMBLY	26H	1	1	
②8	G2W 001 371	COMPRESSOR LEAD WIRE ASSEMBLY		1	1	

**MUZ-AP25VGH -E1 MUZ-AP35VGH -E1**  
**1-6. OUTDOOR UNIT ELECTRICAL PARTS**



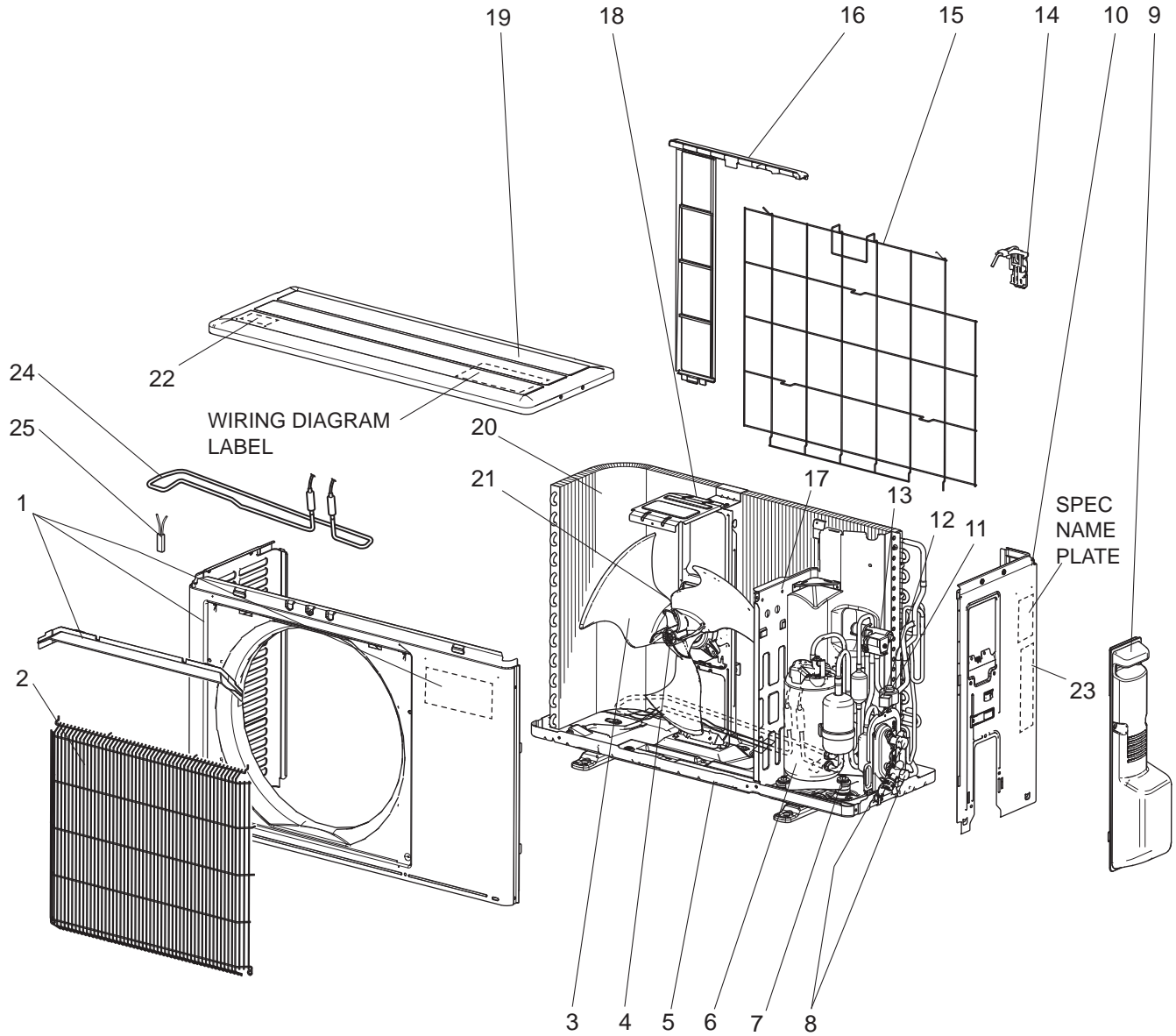


**1-6. OUTDOOR UNIT ELECTRICAL PARTS**

No.	Part No.	Part Name	Symbol in Wiring Diagram	Q'ty/unit		Remarks
				MUZ-AP		
				25VGH- [E1]	35VGH- [E1]	
1	G2W 001 359	REACTOR	L61	1		
	G2W 002 359				1	
2	G2W 001 353	THERMISTOR SET	RT61, RT62	1	1	DEFROST, DISCHARGE
3	G2W 001 355	AMBIENT TEMPERATURE THERMISTOR	RT65	1	1	
4	G2W 001 357	OUTDOOR HEAT EXCHANGER TEMPERATURE THERMISTOR	RT68	1	1	
5	G2W 001 365	R.V. COIL ASSEMBLY	21S4	1	1	
6	G2W 001 373	TERMINAL BLOCK	TB1	1	1	5P (S1, S2, S3, L, N)
7	_____	P.C. BOARD COVER		1	1	DY02B869G01, SQ33C889H05 (2 PCS)
8	_____	P.C. BOARD SUPPORT		1	1	DY25A804G02
9	G2W 003 460	INVERTER P.C. BOARD ASSEMBLY		1		Includes heat sink and RT64
	G2W 002 460				1	

MUZ-AP25VGH -E2 MUZ-AP35VGH -E2

1-7. OUTDOOR UNIT STRUCTURAL PARTS AND FUNCTIONAL PARTS

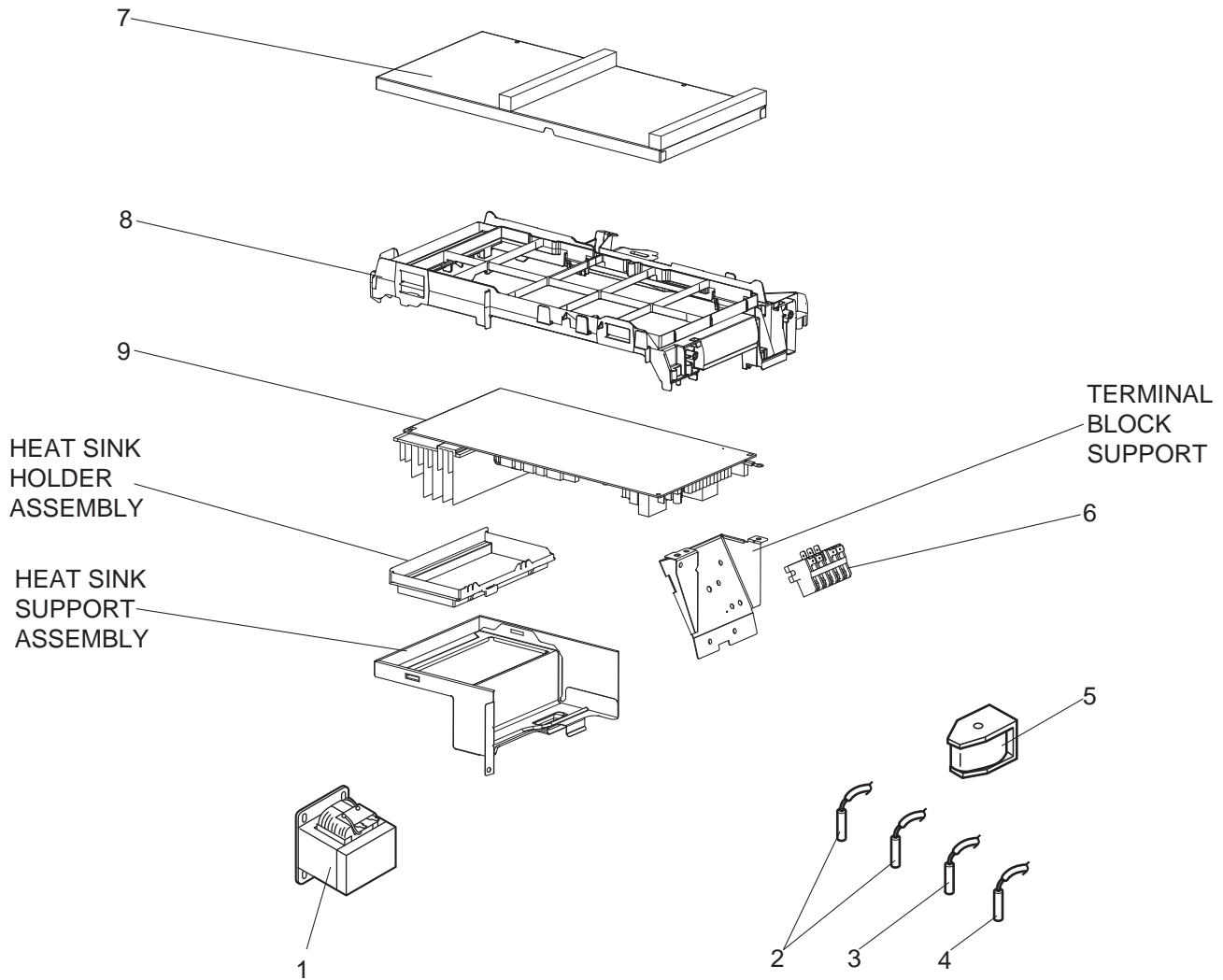


## 1-7. OUTDOOR UNIT STRUCTURAL PARTS AND FUNCTIONAL PARTS

Part number that is circled is not shown in the illustration.

No.	Part No.	Part Name	Symbol in Wiring Diagram	Q'ty/unit		Remarks
				MUZ-AP		
				25VGH- E2	35VGH- E2	
1	G2W 004 050	CABINET		1	1	Includes ice guard, trade mark
2	G2W 001 063	WIRE GRILLE		1	1	
3	G2W 001 550	PROPELLER FAN		1	1	
4	G2W 001 753	PROPELLER FAN NUT		1	1	
5	G2W 002 055	BASE ASSEMBLY		1	1	
6	G2W 001 650	COMPRESSOR	MC	1	1	KVB073FYXMC
7	G2W 001 773	COMPRESSOR RUBBER SET		3	3	3 RUBBERS/SET
8	G2W 001 655	STOP VALVE ASSEMBLY		1	1	Gas: ø9.52 Liquid: ø6.35 Includes pipes
9	G2W 001 053	SERVICE PANEL ASSEMBLY		1	1	
10	G2W 001 060	BACK PANEL ASSEMBLY		1	1	Not including SPEC NAME PLATE or No. 23
11	G2W 001 668	EXPANSION VALVE ASSEMBLY		1	1	Includes capillary tube ø4.0xø2.4x240
12	G2W 001 362	EXPANSION VALVE COIL	LEV	1	1	
13	G2W 002 665	4-WAY VALVE		1	1	
14	————	THERMO HOLDER (AMBIENT)		1	1	DK25A972G03
15	G2W 001 067	CONDENSER WIRE NET ASSEMBLY		1	1	
16	G2W 002 065	CONDENSER NET		1	1	
17	G2W 002 150	SEPARATOR		1	1	
18	G2W 001 154	MOTOR SUPPORT		1	1	
19	G2W 001 057	TOP PANEL ASSEMBLY		1	1	Not including WIRING DIAGRAM LABEL or No. 22
20	G2W 005 660	OUTDOOR HEAT EXCHANGER		1		
	G2W 001 660				1	
21	G2W 002 350	OUTDOOR FAN MOTOR	MF	1	1	RC0J55-□□
22	————	LABEL		1	1	JG79R840H02
23	————	LABEL		1	1	DG79T490H01
24	G2W 001 368	DEFROST HEATER	H	1	1	
25	G2W 001 377	HEATER PROTECTOR ASSEMBLY	26H	1	1	
②6	G2W 001 371	COMPRESSOR LEAD WIRE ASSEMBLY		1	1	

**MUZ-AP25VGH -E2 MUZ-AP35VGH -E2**  
**1-8. OUTDOOR UNIT ELECTRICAL PARTS**





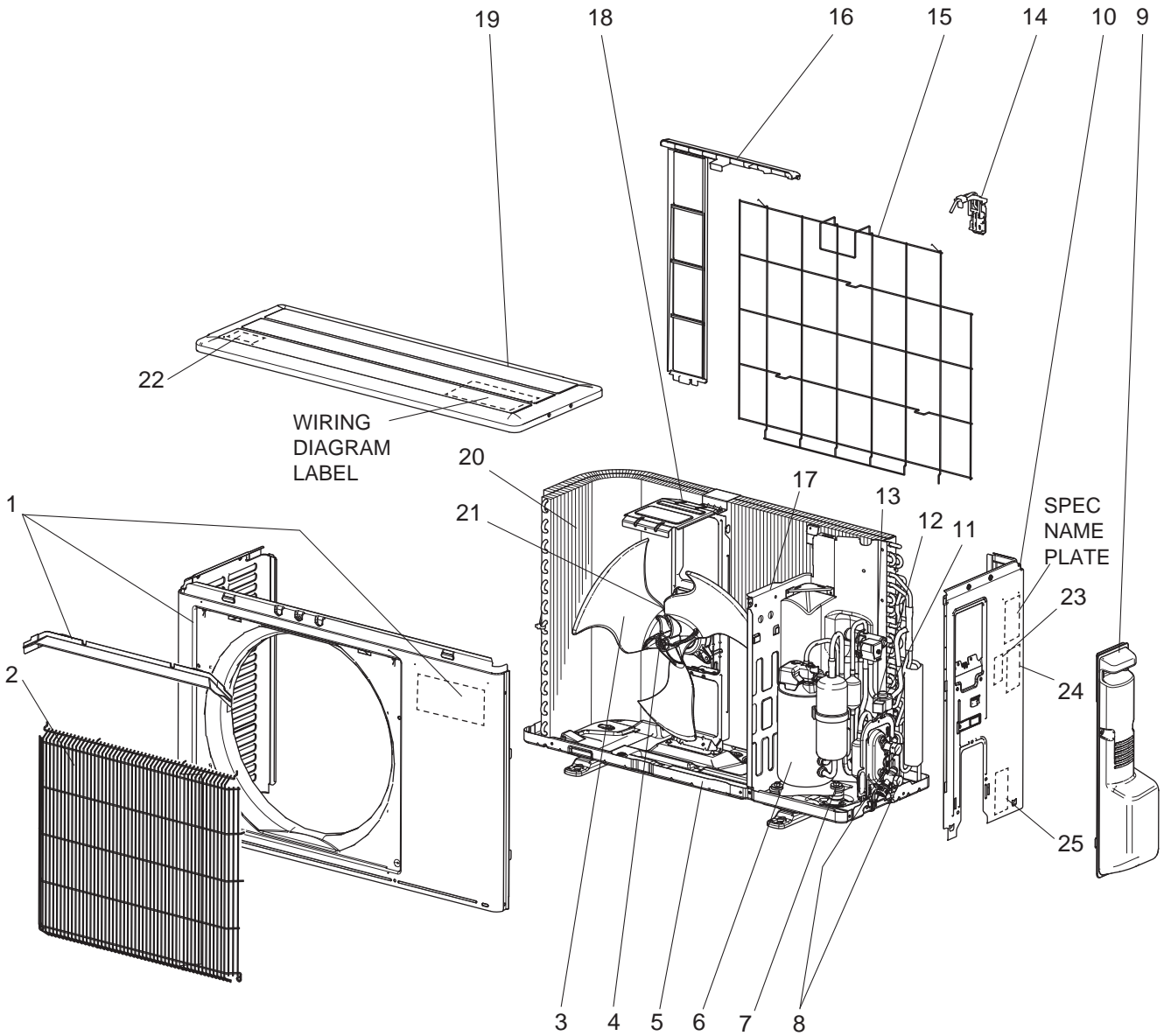


### 1-8. OUTDOOR UNIT ELECTRICAL PARTS

No.	Part No.	Part Name	Symbol in Wiring Diagram	Q'ty/unit		Remarks
				MUZ-AP		
				25VGH- E2	35VGH- E2	
1	G2W 001 359	REACTOR	L61	1		
	G2W 002 359				1	
2	G2W 001 353	THERMISTOR SET	RT61, RT62	1	1	DEFROST, DISCHARGE
3	G2W 001 355	AMBIENT TEMPERATURE THERMISTOR	RT65	1	1	
4	G2W 001 357	OUTDOOR HEAT EXCHANGER TEMPERATURE THERMISTOR	RT68	1	1	
5	G2W 003 365	R.V. COIL ASSEMBLY	21S4	1	1	
6	G2W 001 373	TERMINAL BLOCK	TB1	1	1	5P (S1, S2, S3, L, N)
7	_____	P.C. BOARD COVER		1	1	DY02B869G01, SQ33C889H05 (2 PCS)
8	_____	P.C. BOARD SUPPORT		1	1	DY25A804G02
9	G2W 013 460	INVERTER P.C. BOARD ASSEMBLY		1		Includes heat sink and RT64
	G2W 015 460				1	

MUZ-AP42VG -E1, ET1

1-9. OUTDOOR UNIT STRUCTURAL PARTS AND FUNCTIONAL PARTS



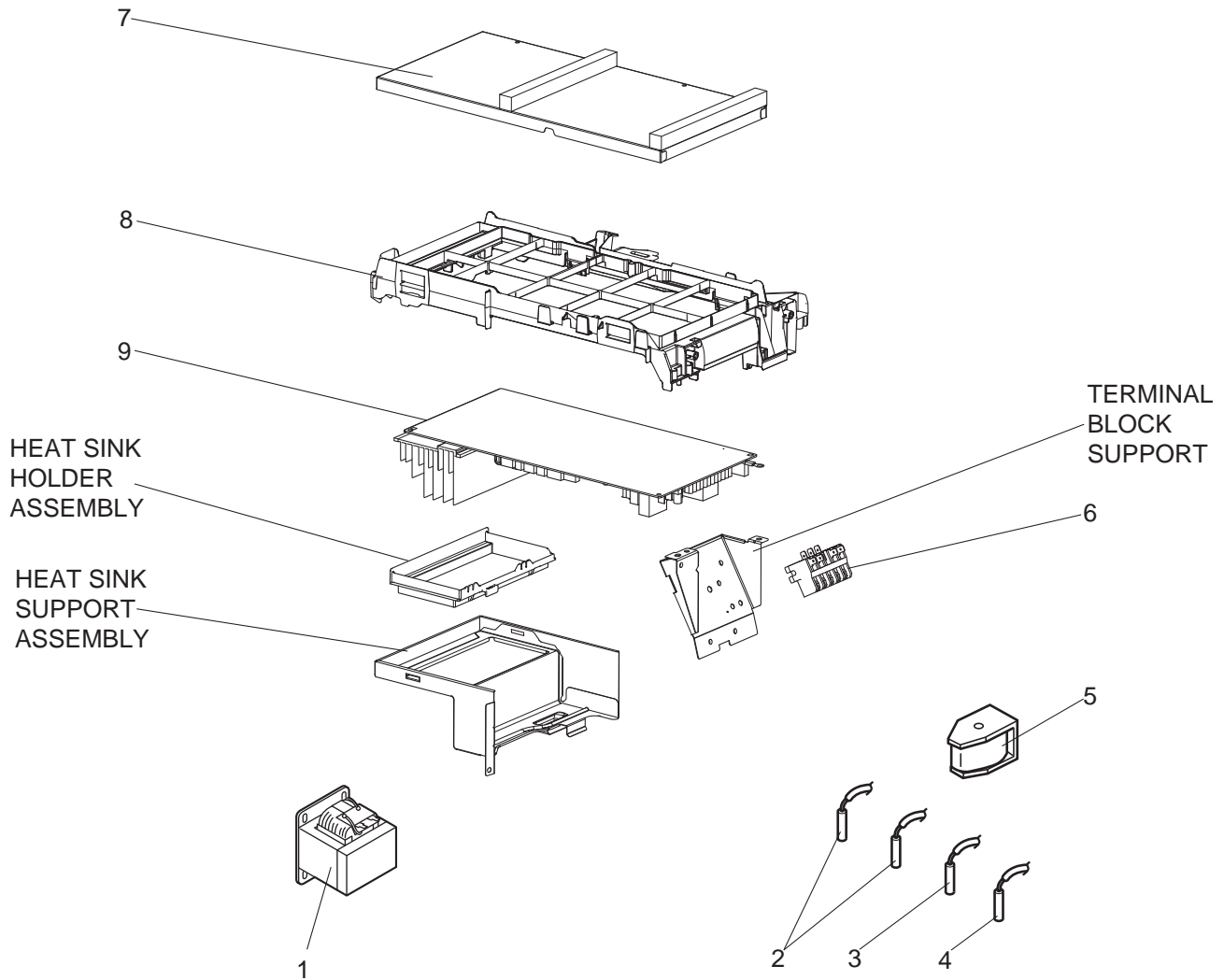
## 1-9. OUTDOOR UNIT STRUCTURAL PARTS AND FUNCTIONAL PARTS

Part numbers that are circled are not shown in the illustration.

No.	Part No.	Part Name	Symbol in Wiring Diagram	Q'ty/unit		Remarks
				MUZ-AP		
				42VG-		
				E1	E1	
1	G2W 004 050	CABINET		1	1	Includes ice guard, trade mark
2	G2W 001 063	WIRE GRILLE		1	1	
3	G2W 001 550	PROPELLER FAN		1	1	
4	G2W 001 753	PROPELLER FAN NUT		1	1	
5	G2W 001 055	BASE ASSEMBLY		1	1	
6	G2W 002 650	COMPRESSOR	MC	1	1	SVB130FBBMC
7	G2W 002 773	COMPRESSOR RUBBER SET		3	3	3 RUBBERS/SET
8	G2W 001 655	STOP VALVE ASSEMBLY		1	1	Gas: ø9.52 Liquid: ø6.35 Includes pipes
9	G2W 001 053	SERVICE PANEL ASSEMBLY		1	1	
10	G2W 001 060	BACK PANEL ASSEMBLY		1	1	Not including SPEC NAME PLATE or No. 23 to 25
11	G2W 001 668	EXPANSION VALVE ASSEMBLY		1	1	Includes capillary tube ø4.0xø2.4x240
12	G2W 001 362	EXPANSION VALVE COIL	LEV	1	1	
13	G2W 001 665	4-WAY VALVE		1	1	
14	————	THERMO HOLDER (AMBIENT)		1	1	DK25A972G04
15	G2W 002 067	CONDENSER WIRE NET ASSEMBLY		1	1	
16	G2W 001 065	CONDENSER NET		1	1	
17	G2W 003 150	SEPARATOR		1	1	
18	G2W 002 154	MOTOR SUPPORT		1	1	
19	G2W 001 057	TOP PANEL ASSEMBLY		1	1	Not including WIRING DIA- GRAM LABEL or No. 22
20	G2W 006 660	OUTDOOR HEAT EXCHANGER		1	1	Includes No. 27
21	G2W 001 350	OUTDOOR FAN MOTOR	MF	1	1	RC0J50-□□
22	————	LABEL		1	1	JG79R840H02
23	————	LABEL		1	1	JG79B901H01
24	————	LABEL		1	1	JG79R837H01
25	————	LABEL		1	1	DG79T472H01
②⑥	G2W 002 371	COMPRESSOR LEAD WIRE ASSEMBLY		1	1	
②⑦	G2W 001 672	CAPILLARY TUBE PIPE ASSEMBLY		1	1	Includes capillary tube ø3.0xø1.8x600 (x2)
②⑧	G2W 001 765	DRAIN SOCKET		1	1	

MUZ-AP42VG -E1, ET1

1-10. OUTDOOR UNIT ELECTRICAL PARTS



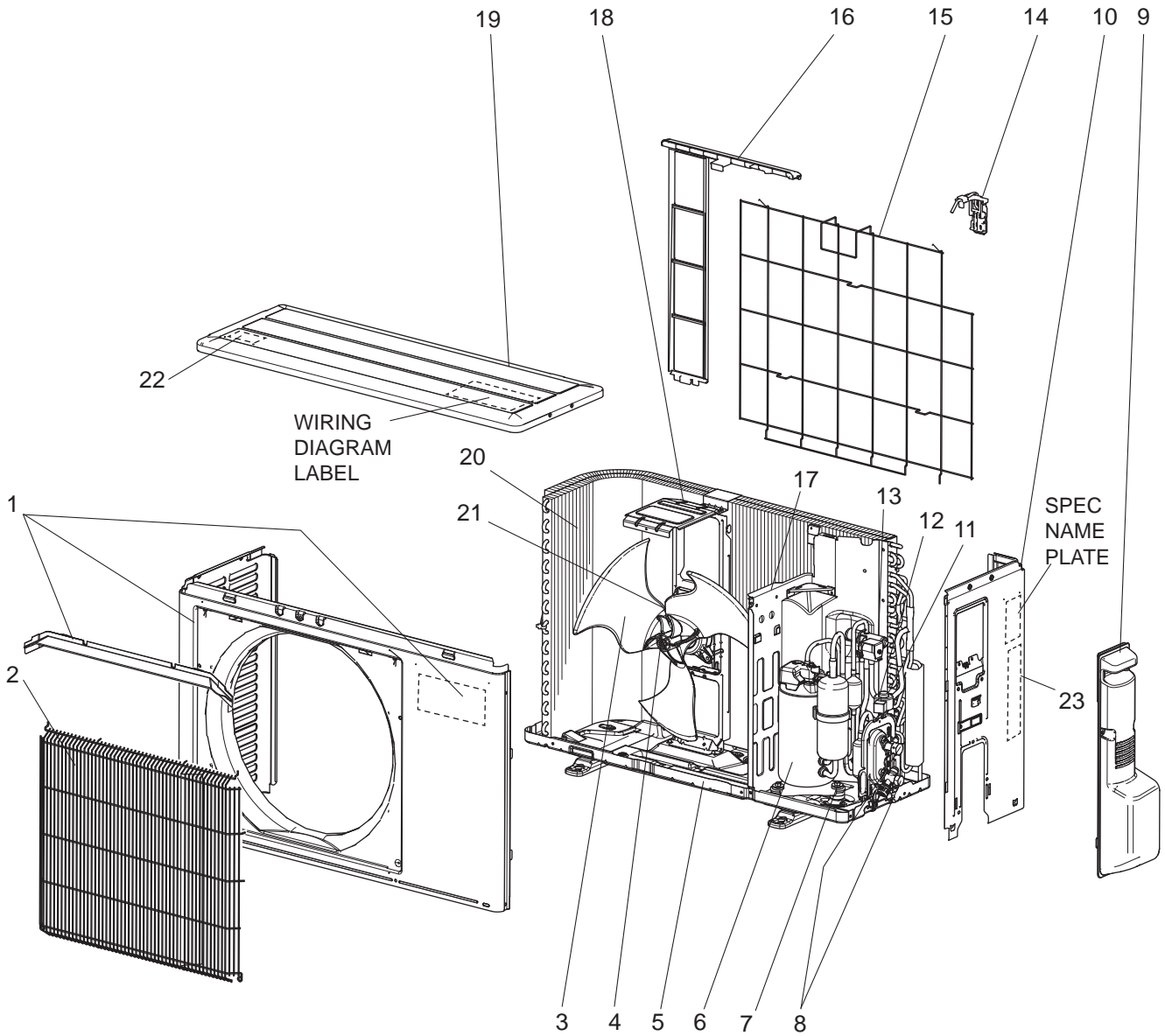


### 1-10. OUTDOOR UNIT ELECTRICAL PARTS

No.	Part No.	Part Name	Symbol in Wiring Diagram	Q'ty/unit		Remarks
				MUZ-AP		
				42VG-		
				[E1]	[ET]	
1	G2W 002 359	REACTOR	L61	1	1	
2	G2W 001 353	THERMISTOR SET	RT61, RT62	1	1	DEFROST, DISCHARGE
3	G2W 001 355	AMBIENT TEMPERATURE THERMISTOR	RT65	1	1	
4	G2W 001 357	OUTDOOR HEAT EXCHANGER TEMPERATURE THERMISTOR	RT68	1	1	
5	G2W 001 365	R.V. COIL ASSEMBLY	21S4	1	1	
6	G2W 001 373	TERMINAL BLOCK	TB1	1	1	5P (S1, S2, S3, L, N)
7	————	P.C. BOARD COVER		1	1	DY02B869G01, SQ33C889H05 (2 PCS)
8	————	P.C. BOARD SUPPORT		1	1	DY25A804G02
9	G2W 004 460	INVERTER P.C. BOARD ASSEMBLY		1	1	Includes heat sink and RT64

MUZ-AP42VG - **E2**, **ET2**, **ER2**

1-11. OUTDOOR UNIT STRUCTURAL PARTS AND FUNCTIONAL PARTS



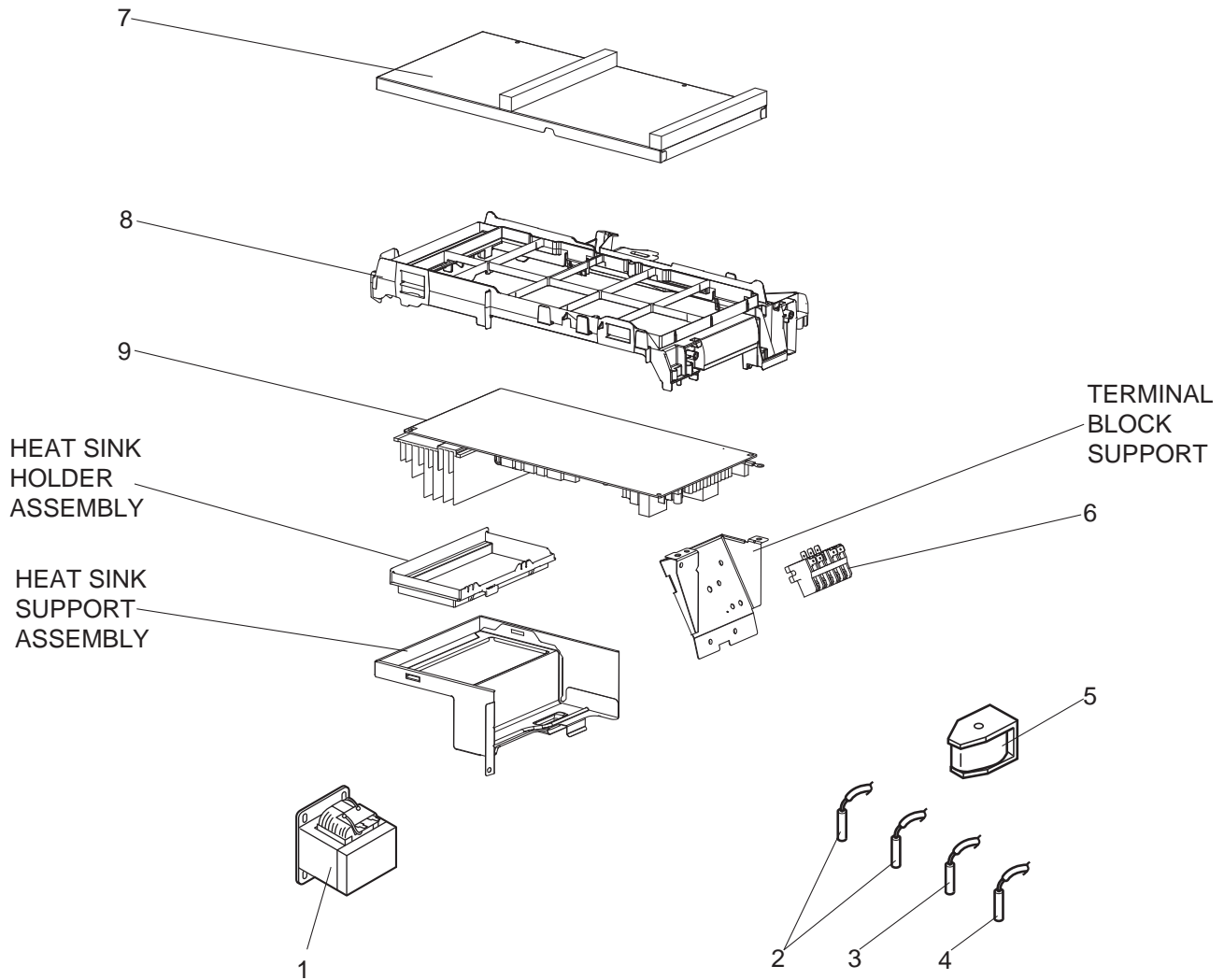
## 1-11. OUTDOOR UNIT STRUCTURAL PARTS AND FUNCTIONAL PARTS

Part numbers that are circled are not shown in the illustration.

No.	Part No.	Part Name	Symbol in Wiring Diagram	Q'ty/unit			Remarks
				MUZ-AP			
				42VG-			
				E2	ET2	ER2	
1	G2W 004 050	CABINET		1	1	1	Includes ice guard, trade mark
2	G2W 001 063	WIRE GRILLE		1	1	1	
3	G2W 001 550	PROPELLER FAN		1	1	1	
4	G2W 001 753	PROPELLER FAN NUT		1	1	1	
5	G2W 001 055	BASE ASSEMBLY		1	1	1	
6	G2W 002 650	COMPRESSOR	MC	1	1	1	SVB130FBBMC
7	G2W 002 773	COMPRESSOR RUBBER SET		3	3	3	3 RUBBERS/SET
8	G2W 001 655	STOP VALVE ASSEMBLY		1	1	1	Gas: ø9.52 Liquid: ø6.35 Includes pipes
9	G2W 001 053	SERVICE PANEL ASSEMBLY		1	1	1	
10	G2W 001 060	BACK PANEL ASSEMBLY		1	1	1	Not including SPEC NAME PLATE or No. 23
11	G2W 001 668	EXPANSION VALVE ASSEMBLY		1	1	1	Includes capillary tube ø4.0xø2.4x240
12	G2W 001 362	EXPANSION VALVE COIL	LEV	1	1	1	
13	G2W 002 665	4-WAY VALVE		1	1	1	
14	————	THERMO HOLDER (AMBIENT)		1	1	1	DK25A972G04
15	G2W 002 067	CONDENSER WIRE NET ASSEMBLY		1	1	1	
16	G2W 001 065	CONDENSER NET		1	1	1	
17	G2W 003 150	SEPARATOR		1	1	1	
18	G2W 002 154	MOTOR SUPPORT		1	1	1	
19	G2W 001 057	TOP PANEL ASSEMBLY		1	1	1	Not including WIRING DIA- GRAM LABEL or No. 22
20	G2W 006 660	OUTDOOR HEAT EXCHANGER		1	1	1	Includes No. 25
21	G2W 002 350	OUTDOOR FAN MOTOR	MF	1	1	1	RC0J55-□□
22	————	LABEL		1	1	1	JG79R840H02
23	————	LABEL		1	1	1	DG79T490H01
					1		DG79T490H02
②④	G2W 002 371	COMPRESSOR LEAD WIRE ASSEMBLY		1	1	1	
②⑤	G2W 001 672	CAPILLARY TUBE PIPE ASSEMBLY		1	1	1	Includes capillary tube ø3.0xø1.8x600 (x2)
②⑥	G2W 001 765	DRAIN SOCKET		1	1	1	

MUZ-AP42VG - E2, ET2, ER2

1-12. OUTDOOR UNIT ELECTRICAL PARTS





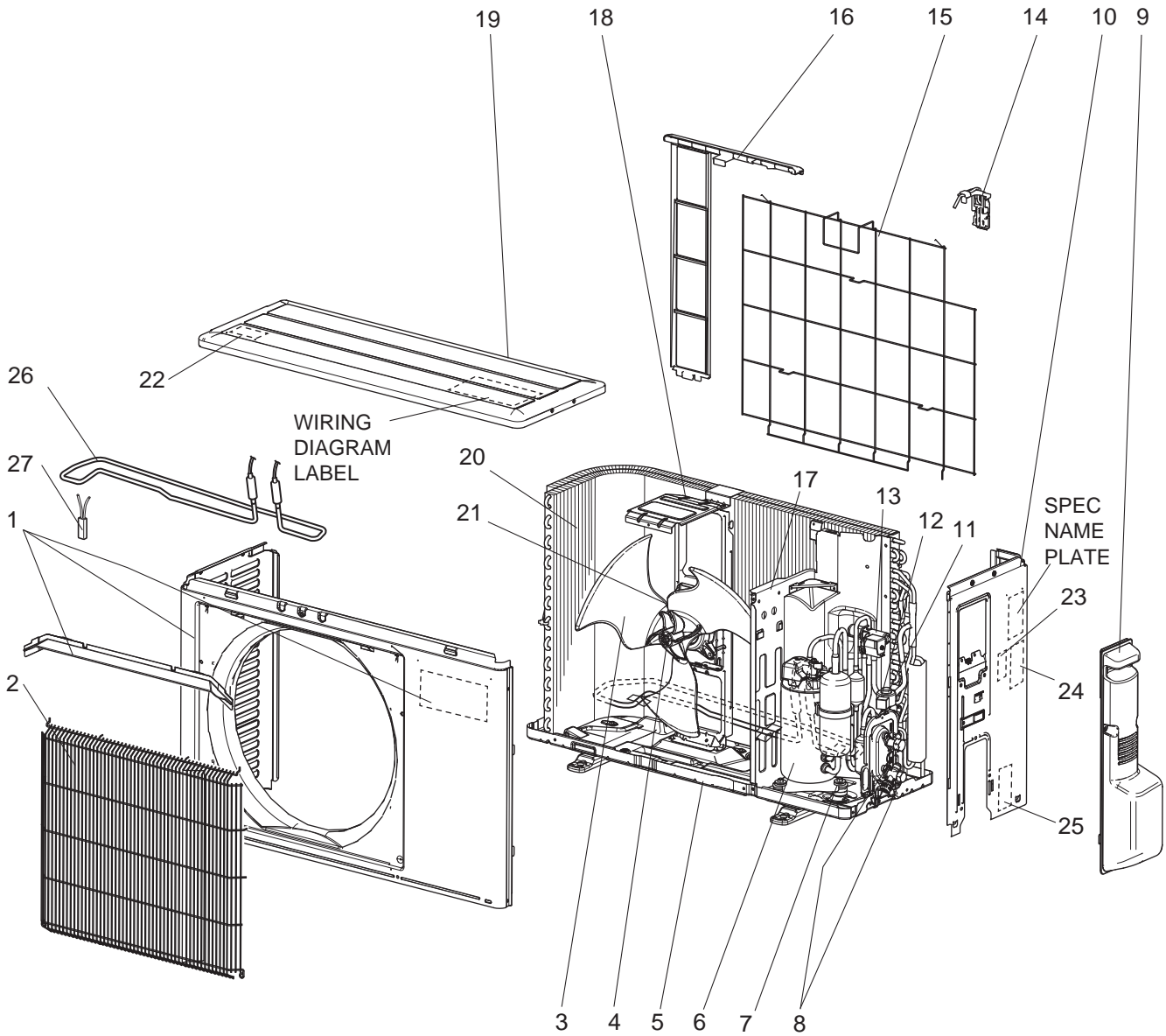


### 1-12. OUTDOOR UNIT ELECTRICAL PARTS

No.	Part No.	Part Name	Symbol in Wiring Diagram	Q'ty/unit			Remarks
				MUZ-AP			
				42VG-			
				E2	ET2	ER2	
1	G2W 002 359	REACTOR	L61	1	1	1	
2	G2W 001 353	THERMISTOR SET	RT61, RT62	1	1	1	DEFROST, DISCHARGE
3	G2W 001 355	AMBIENT TEMPERATURE THERMISTOR	RT65	1	1	1	
4	G2W 001 357	OUTDOOR HEAT EXCHANGER TEMPERATURE THERMISTOR	RT68	1	1	1	
5	G2W 003 365	R.V. COIL ASSEMBLY	21S4	1	1	1	
6	G2W 001 373	TERMINAL BLOCK	TB1	1	1	1	5P (S1, S2, S3, L, N)
7	————	P.C. BOARD COVER		1	1	1	DY02B869G01, SQ33C889H05 (2 PCS)
8	————	P.C. BOARD SUPPORT		1	1	1	DY25A804G02
9	G2W 016 460	INVERTER P.C. BOARD ASSEMBLY		1	1	1	Includes heat sink and RT64

MUZ-AP42VGH -E1

1-13. OUTDOOR UNIT STRUCTURAL PARTS AND FUNCTIONAL PARTS

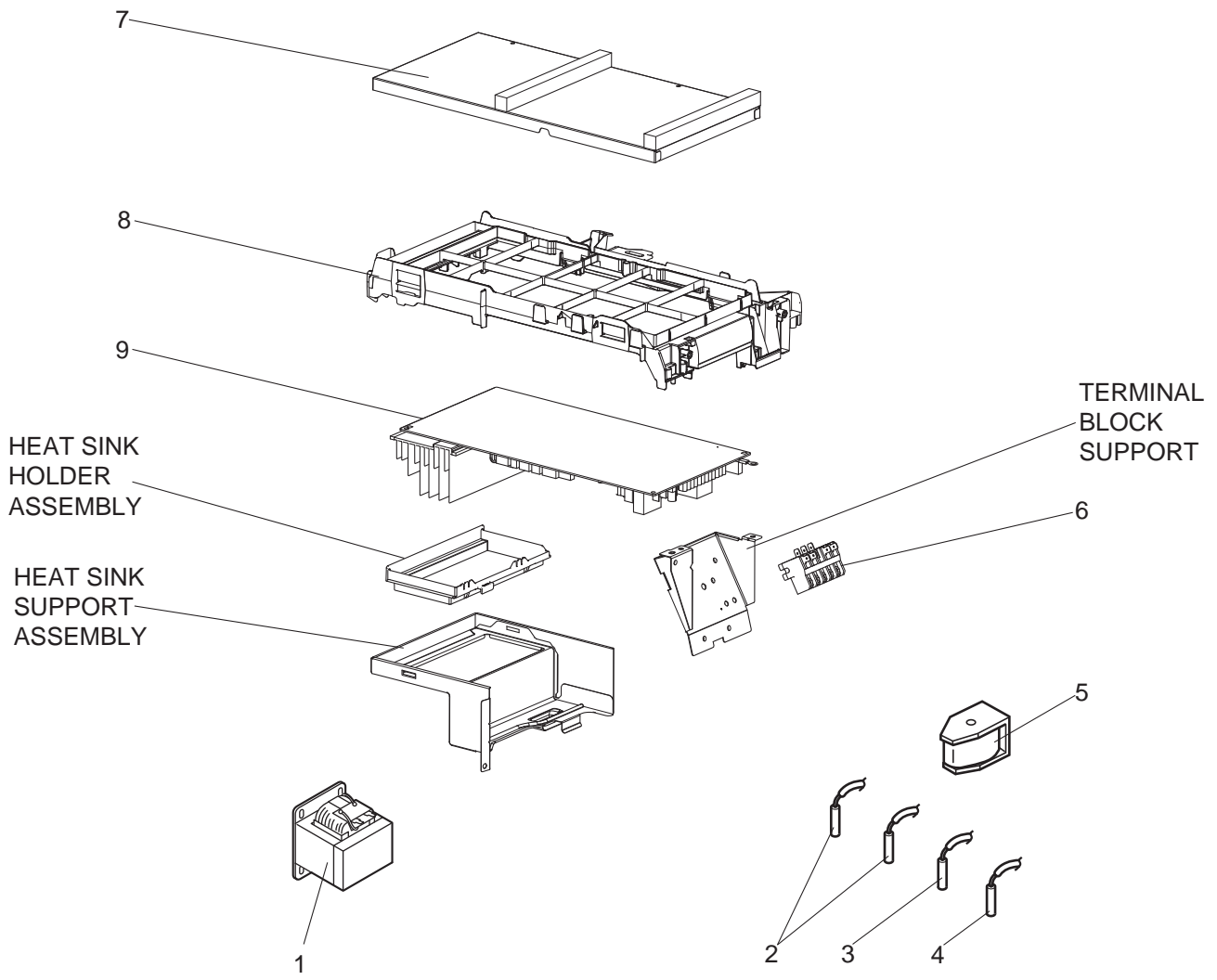


## 1-13. OUTDOOR UNIT STRUCTURAL PARTS AND FUNCTIONAL PARTS

Part numbers that are circled are not shown in the illustration.

No.	Part No.	Part Name	Symbol in Wiring Diagram	Q'ty/unit	Remarks
				MUZ-AP42VGH- [E1]	
1	G2W 004 050	CABINET		1	Includes ice guard, trade mark
2	G2W 001 063	WIRE GRILLE		1	
3	G2W 001 550	PROPELLER FAN		1	
4	G2W 001 753	PROPELLER FAN NUT		1	
5	G2W 002 055	BASE ASSEMBLY		1	
6	G2W 002 650	COMPRESSOR	MC	1	SVB130FBBMC
7	G2W 002 773	COMPRESSOR RUBBER SET		3	3 RUBBERS/SET
8	G2W 001 655	STOP VALVE ASSEMBLY		1	Gas: ø9.52 Liquid: ø6.35 Includes pipes
9	G2W 001 053	SERVICE PANEL ASSEMBLY		1	
10	G2W 001 060	BACK PANEL ASSEMBLY		1	Not including SPEC NAME PLATE or No. 23 to 25
11	G2W 001 668	EXPANSION VALVE ASSEMBLY		1	Includes capillary tube ø4.0xø2.4x240
12	G2W 001 362	EXPANSION VALVE COIL	LEV	1	
13	G2W 001 665	4-WAY VALVE		1	
14	————	THERMO HOLDER (AMBIENT)		1	DK25A972G04
15	G2W 002 067	CONDENSER WIRE NET ASSEMBLY		1	
16	G2W 001 065	CONDENSER NET		1	
17	G2W 004 150	SEPARATOR		1	
18	G2W 002 154	MOTOR SUPPORT		1	
19	G2W 001 057	TOP PANEL ASSEMBLY		1	Not including WIRING DIAGRAM LABEL or No. 22
20	G2W 006 660	OUTDOOR HEAT EXCHANGER		1	Includes No. 29
21	G2W 001 350	OUTDOOR FAN MOTOR	MF	1	RC0J50-□□
22	————	LABEL		1	JG79R840H02
23	————	LABEL		1	JG79B901H01
24	————	LABEL		1	JG79R837H01
25	————	LABEL		1	DG79T472H01
26	G2W 001 368	DEFROST HEATER	H	1	
27	G2W 001 377	HEATER PROTECTOR ASSEMBLY	26H	1	
⑳	G2W 002 371	COMPRESSOR LEAD WIRE ASSEMBLY		1	
㉑	G2W 001 672	CAPILLARY TUBE PIPE ASSEM- BLY		1	Includes capillary tube ø3.0xø1.8x600 (x2)

**MUZ-AP42VGH -E1**  
**1-14 OUTDOOR UNIT ELECTRICAL PARTS**



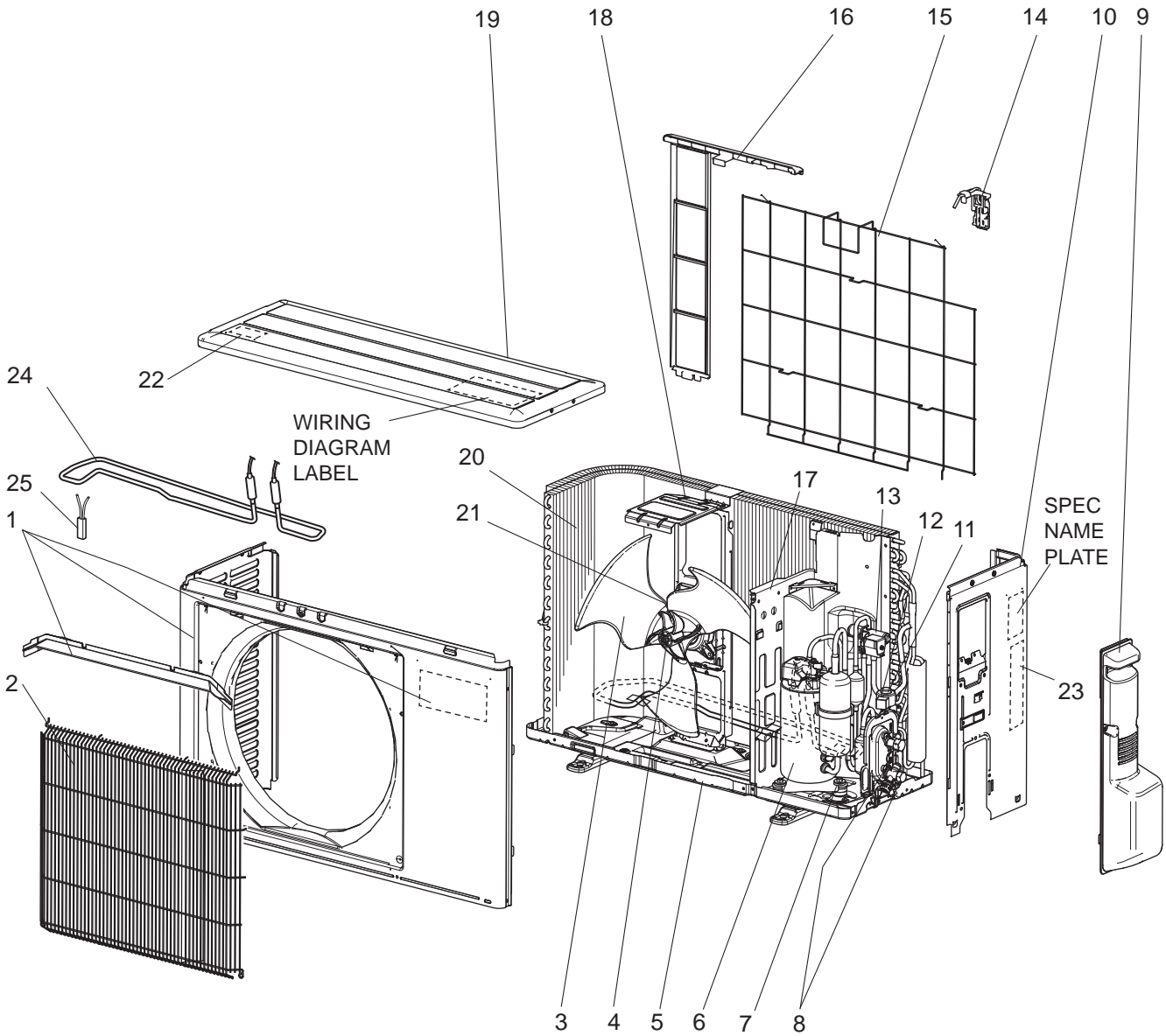


### 1-14. OUTDOOR UNIT ELECTRICAL PARTS

No.	Part No.	Part Name	Symbol in Wiring Diagram	Q'ty/unit	Remarks
				MUZ-AP42VGH- [E1]	
1	G2W 002 359	REACTOR	L61	1	
2	G2W 001 353	THERMISTOR SET	RT61, RT62	1	DEFROST, DISCHARGE
3	G2W 001 355	AMBIENT TEMPERATURE THERMISTOR	RT65	1	
4	G2W 001 357	OUTDOOR HEAT EXCHANGER TEMPERATURE THERMISTOR	RT68	1	
5	G2W 001 365	R.V. COIL ASSEMBLY	21S4	1	
6	G2W 001 373	TERMINAL BLOCK	TB1	1	5P (S1, S2, S3, L, N)
7	_____	P.C. BOARD COVER		1	DY02B869G01, SQ33C889H05 (2 PCS)
8	_____	P.C. BOARD SUPPORT		1	DY25A804G02
9	G2W 001 460	INVERTER P.C. BOARD ASSEMBLY		1	Includes heat sink and RT64

MUZ-AP42VGH - [E2]

1-15. OUTDOOR UNIT STRUCTURAL PARTS AND FUNCTIONAL PARTS



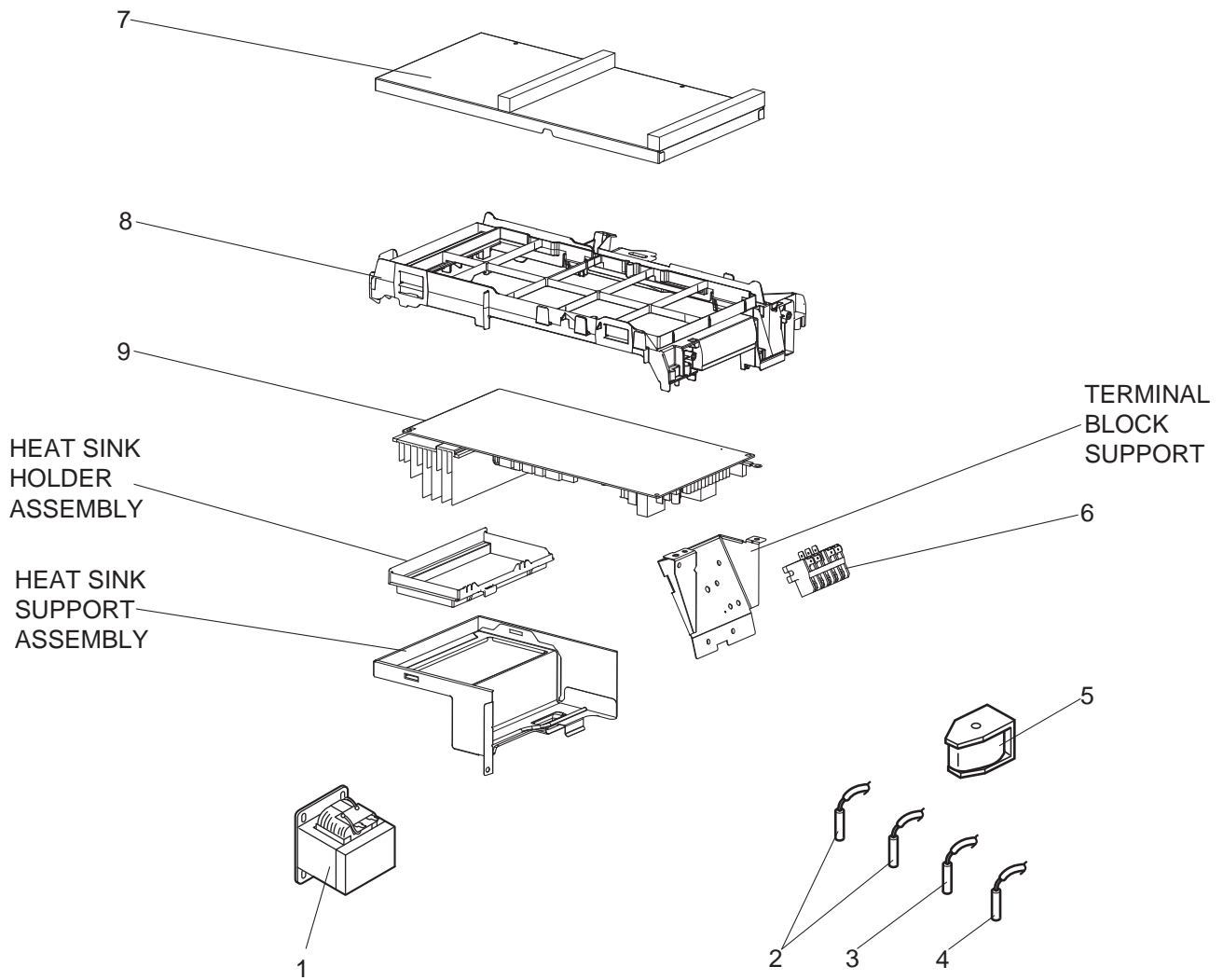
## 1-15. OUTDOOR UNIT STRUCTURAL PARTS AND FUNCTIONAL PARTS

Part numbers that are circled are not shown in the illustration.

No.	Part No.	Part Name	Symbol in Wiring Diagram	Q'ty/unit	Remarks
				MUZ-AP42VGH- [E2]	
1	G2W 004 050	CABINET		1	Includes ice guard, trade mark
2	G2W 001 063	WIRE GRILLE		1	
3	G2W 001 550	PROPELLER FAN		1	
4	G2W 001 753	PROPELLER FAN NUT		1	
5	G2W 002 055	BASE ASSEMBLY		1	
6	G2W 002 650	COMPRESSOR	MC	1	SVB130FBBMC
7	G2W 002 773	COMPRESSOR RUBBER SET		3	3 RUBBERS/SET
8	G2W 001 655	STOP VALVE ASSEMBLY		1	Gas: ø9.52 Liquid: ø6.35 Includes pipes
9	G2W 001 053	SERVICE PANEL ASSEMBLY		1	
10	G2W 001 060	BACK PANEL ASSEMBLY		1	Not including SPEC NAME PLATE or No. 23
11	G2W 001 668	EXPANSION VALVE ASSEMBLY		1	Includes capillary tube ø4.0xø2.4x240
12	G2W 001 362	EXPANSION VALVE COIL	LEV	1	
13	G2W 002 665	4-WAY VALVE		1	
14	————	THERMO HOLDER (AMBIENT)		1	DK25A972G04
15	G2W 002 067	CONDENSER WIRE NET ASSEMBLY		1	
16	G2W 001 065	CONDENSER NET		1	
17	G2W 004 150	SEPARATOR		1	
18	G2W 002 154	MOTOR SUPPORT		1	
19	G2W 001 057	TOP PANEL ASSEMBLY		1	Not including WIRING DIAGRAM LABEL or No. 22
20	G2W 006 660	OUTDOOR HEAT EXCHANGER		1	Includes No. 27
21	G2W 002 350	OUTDOOR FAN MOTOR	MF	1	RC0J55-□□
22	————	LABEL		1	JG79R840H02
23	————	LABEL		1	DG79T490H01
24	G2W 001 368	DEFROST HEATER	H	1	
25	G2W 001 377	HEATER PROTECTOR ASSEMBLY	26H	1	
②⑥	G2W 002 371	COMPRESSOR LEAD WIRE ASSEMBLY		1	
②⑦	G2W 001 672	CAPILLARY TUBE PIPE ASSEM- BLY		1	Includes capillary tube ø3.0xø1.8x600 (x2)

MUZ-AP42VGH - [E2]

1-16. OUTDOOR UNIT ELECTRICAL PARTS





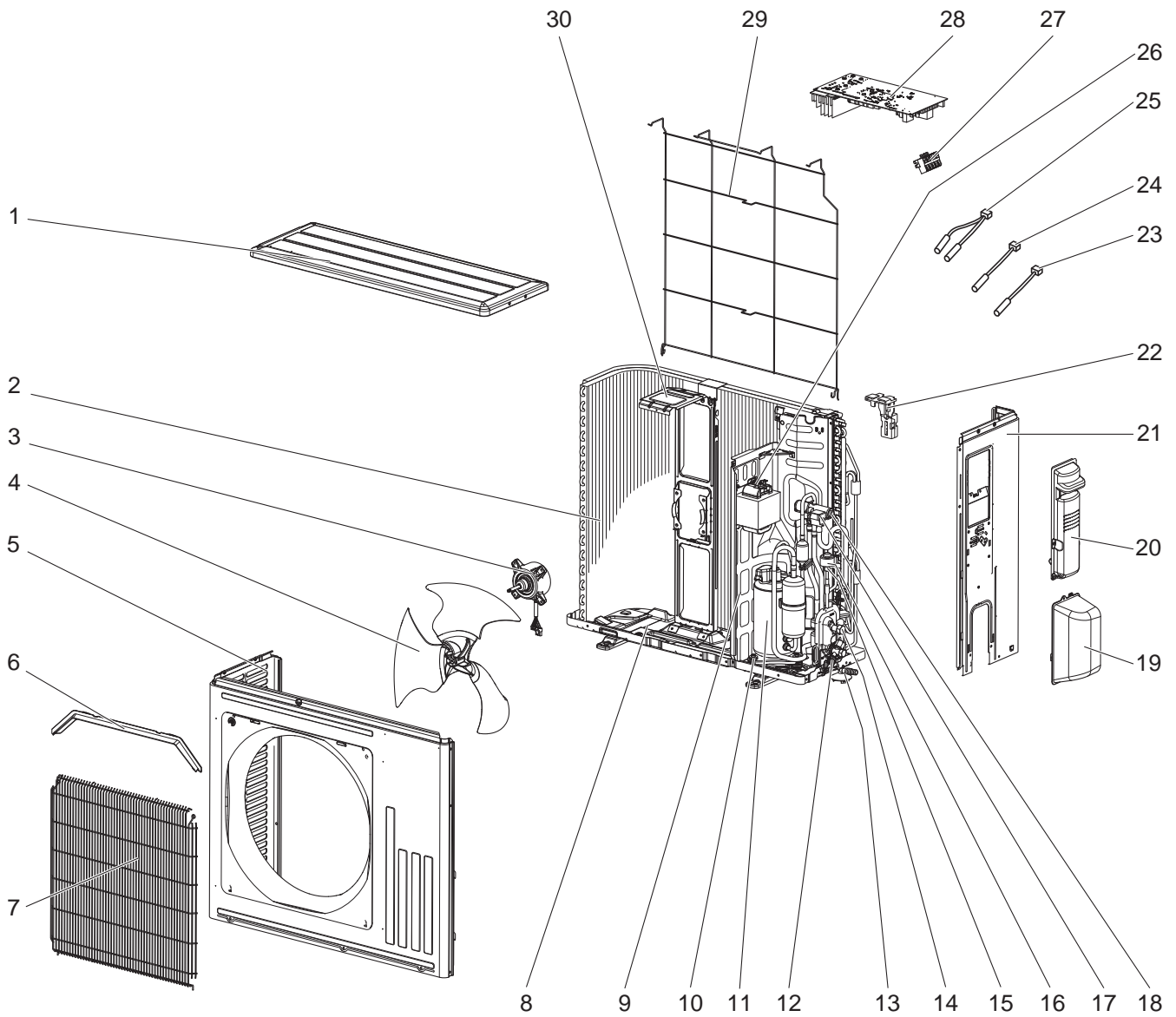


### 1-16. OUTDOOR UNIT ELECTRICAL PARTS

No.	Part No.	Part Name	Symbol in Wiring Diagram	Q'ty/unit	Remarks
				MUZ-AP42VGH- [E2]	
1	G2W 002 359	REACTOR	L61	1	
2	G2W 001 353	THERMISTOR SET	RT61, RT62	1	DEFROST, DISCHARGE
3	G2W 001 355	AMBIENT TEMPERATURE THERMISTOR	RT65	1	
4	G2W 001 357	OUTDOOR HEAT EXCHANGER TEMPERATURE THERMISTOR	RT68	1	
5	G2W 003 365	R.V. COIL ASSEMBLY	21S4	1	
6	G2W 001 373	TERMINAL BLOCK	TB1	1	5P (S1, S2, S3, L, N)
7	_____	P.C. BOARD COVER		1	DY02B869G01, SQ33C889H05 (2 PCS)
8	_____	P.C. BOARD SUPPORT		1	DY25A804G02
9	G2W 017 460	INVERTER P.C. BOARD ASSEMBLY		1	Includes heat sink and RT64

**MUZ-AP50VG -E1, ET1**

**1-17. OUTDOOR UNIT STRUCTURAL PARTS, ELECTRICAL PARTS AND FUNCTIONAL PARTS**



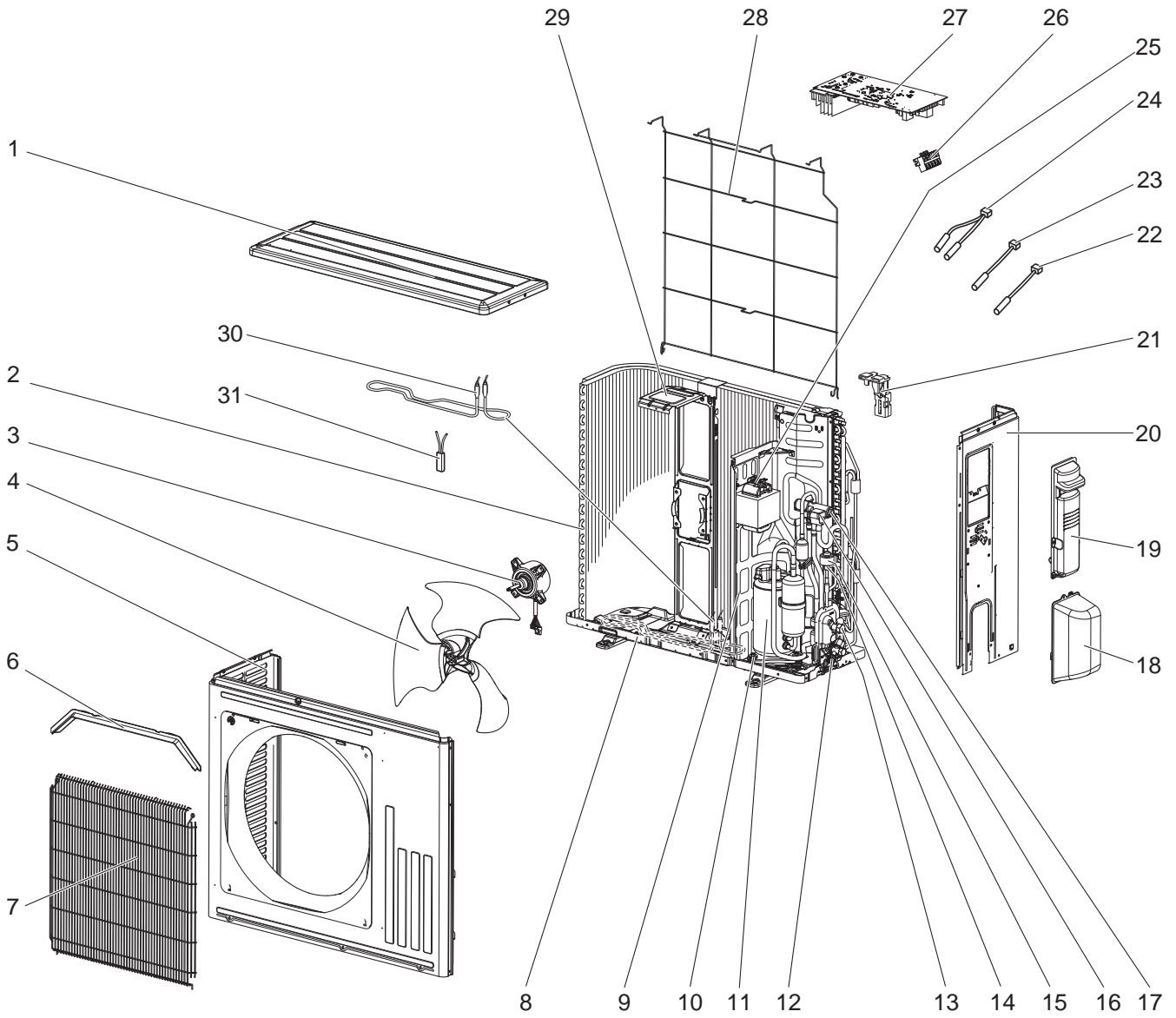
## 1-17. OUTDOOR UNIT STRUCTURAL PARTS, ELECTRICAL PARTS AND FUNCTIONAL PARTS

Part numbers that are circled are not shown in the illustration.

No.	Part No.	Part Name	Symbol in Wiring Diagram	Q'ty/unit		Remarks
				MUZ-AP50VG-		
				E1	ET1	
1	E12 Y86 297	TOP PANEL		1	1	
2	E12 Y86 630	OUTDOOR HEAT EXCHANGER		1	1	
3	E12 Y86 301	OUTDOOR FAN MOTOR	MF	1	1	RC0J50-□□
4	E12 Y86 501	PROPELLER FAN		1	1	
5	E12 Y86 232	CABINET		1	1	
6	E12 Y86 531	ICE GUARD		1	1	
7	E12 Y86 521	GRILLE		1	1	
8	E12 Y84 290	BASE		1	1	
9	E12 Y86 293	SEPARATOR		1	1	
10	E12 C34 506	COMPRESSOR RUBBER SET		3	3	3 RUBBERS/SET
11	E12 R83 900	COMPRESSOR	MC	1	1	SVB130FBBMT
12	E12 Y86 661	STOP VALVE (GAS)		1	1	∅9.52
13	E12 838 704	DRAIN SOCKET		1	1	
14	E12 Y86 662	STOP VALVE (LIQUID)		1	1	∅6.35
15	E12 Y84 640	EXPANSION VALVE		1	1	
16	E12 Y84 493	EXPANSION VALVE COIL	LEV	1	1	
17	E12 Y86 490	R.V. COIL	21S4	1	1	
18	E12 J44 961	4-WAY VALVE		1	1	
19	E12 Y86 650	VALVE COVER		1	1	
20	E12 Y86 245	SERVICE PANEL		1	1	
21	E12 Y86 233	BACK PANEL (OUT)		1	1	
22	E12 22A 079	THERMO HOLDER		1	1	
23	E12 Y86 309	AMBIENT TEMPERATURE THERMISTOR	RT65	1	1	
24	E12 C34 307	OUTDOOR HEAT EXCHANGER TEMPERATURE THERMISTOR	RT68	1	1	
25	E12 Y86 306	THERMISTOR SET	RT61, RT62	1	1	DEFROST, DISCHARGE
26	E12 H21 337	REACTOR	L61	1	1	
27	E12 T95 374	TERMINAL BLOCK	TB1	1	1	5 P
28	E12 02B 451	INVERTER P.C. BOARD		1	1	Includes heat sink and RT64
29	E12 Y86 525	CONDENSER WIRE NET		1	1	
30	E12 Y86 515	MOTOR SUPPORT		1	1	
①	E12 P72 936	CAPILLARY TUBE		1	1	∅4.0 × ∅2.4 × 240
②	E12 F35 936	CAPILLARY TUBE		2	2	∅3.0 × ∅2.0 × 210

**MUZ-AP50VGH -E1**

**1-18. OUTDOOR UNIT STRUCTURAL PARTS, ELECTRICAL PARTS AND FUNCTIONAL PARTS**



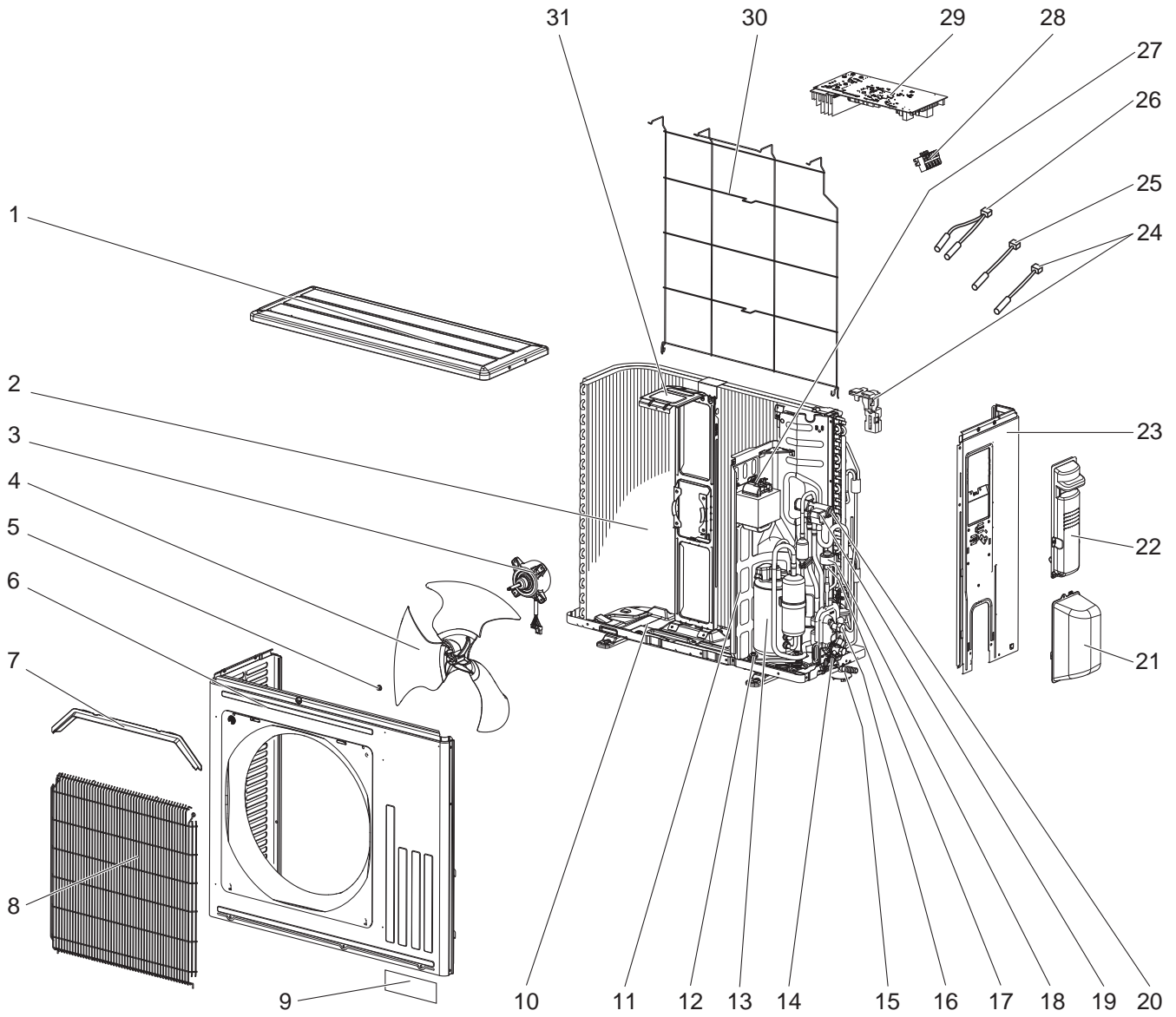
## 1-18. OUTDOOR UNIT STRUCTURAL PARTS, ELECTRICAL PARTS AND FUNCTIONAL PARTS

Part numbers that are circled are not shown in the illustration.

No.	Part No.	Part Name	Symbol in Wiring Diagram	Q'ty/unit	Remarks
				MUZ-AP50VGH- [E1]	
1	E12 Y86 297	TOP PANEL		1	
2	E12 Y86 630	OUTDOOR HEAT EXCHANGER		1	
3	E12 Y86 301	OUTDOOR FAN MOTOR	MF	1	RC0J50-□□
4	E12 Y86 501	PROPELLER FAN		1	
5	E12 Y86 232	CABINET		1	
6	E12 Y86 531	ICE GUARD		1	
7	E12 Y86 521	GRILLE		1	
8	E12 Y96 290	BASE		1	
9	E12 Y86 293	SEPARATOR		1	
10	E12 C34 506	COMPRESSOR RUBBER SET		3	3 RUBBERS/SET
11	E12 R83 900	COMPRESSOR	MC	1	SVB130FBBMT
12	E12 Y86 661	STOP VALVE (GAS)		1	ø9.52
13	E12 Y86 662	STOP VALVE (LIQUID)		1	ø6.35
14	E12 Y84 640	EXPANSION VALVE		1	
15	E12 Y84 493	EXPANSION VALVE COIL	LEV	1	
16	E12 Y86 490	R.V. COIL	21S4	1	
17	E12 J44 961	4-WAY VALVE		1	
18	E12 Y86 650	VALVE COVER		1	
19	E12 Y86 245	SERVICE PANEL		1	
20	E12 Y86 233	BACK PANEL (OUT)		1	
21	E12 22A 079	THERMO HOLDER		1	
22	E12 Y86 309	AMBIENT TEMPERATURE THERMISTOR	RT65	1	
23	E12 C34 307	OUTDOOR HEAT EXCHANGER TEMPERATURE THERMISTOR	RT68	1	
24	E12 Y86 306	THERMISTOR SET	RT61, RT62	1	DEFROST, DISCHARGE
25	E12 H21 337	REACTOR	L61	1	
26	E12 T95 374	TERMINAL BLOCK	TB1	1	5 P
27	E12 03B 451	INVERTER P.C. BOARD		1	Includes heat sink and RT64
28	E12 Y86 525	CONDENSER WIRE NET		1	
29	E12 Y86 515	MOTOR SUPPORT		1	
30	E12 03B 526	DEFROST HEATER	H	1	
31	E12 03B 381	HEATER PROTECTOR	26H	1	
③②	E12 P72 936	CAPILLARY TUBE		1	ø4.0 × ø2.4 × 240
③③	E12 F35 936	CAPILLARY TUBE		2	ø3.0 × ø2.0 × 210

**MUZ-AP60VG -E1, ET1**

**1-19. OUTDOOR UNIT STRUCTURAL PARTS, ELECTRICAL PARTS AND FUNCTIONAL PARTS**



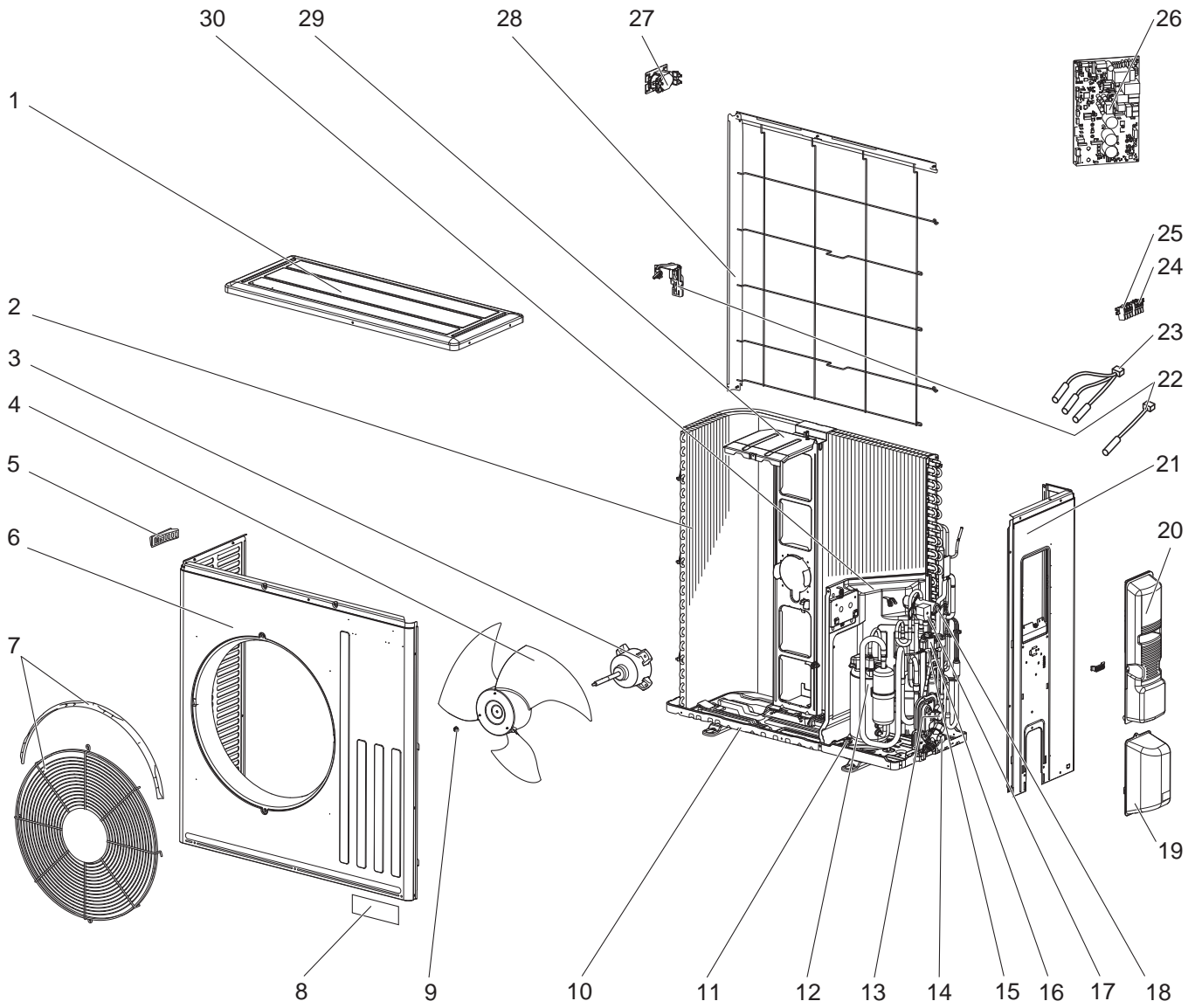
## 1-19. OUTDOOR UNIT STRUCTURAL PARTS, ELECTRICAL PARTS AND FUNCTIONAL PARTS

Part numbers that are circled are not shown in the illustration.

No.	Part No.	Part Name	Symbol in Wiring Diagram	Q'ty/unit		Remarks
				MUZ-AP		
				60VG- E1	60VG- ET1	
1	E22 Y86 297	TOP PANEL		1	1	
2	E22 Y86 630	OUTDOOR HEAT EXCHANGER		1	1	
3	E22 Y86 301	OUTDOOR FAN MOTOR	MF	1	1	RC0J50-□□
4	E22 Y86 501	PROPELLER FAN		1	1	
5	E27 L05 508	PROPELLER FAN NUT		1	1	
6	E22 Y86 232	CABINET		1	1	
7	E22 Y86 531	ICE GUARD		1	1	
8	E22 Y86 521	GRILLE		1	1	
9	—	BRAND LABEL		1	1	DK79G041H02
10	E22 Y84 290	BASE		1	1	
11	E22 Y86 293	SEPARATOR		1	1	
12	E22 C34 506	COMPRESSOR RUBBER SET		3	3	3 RUBBERS/SET
13	E22 R83 900	COMPRESSOR	MC	1	1	SVB130FBBMT
14	E22 22A 661	STOP VALVE (GAS)		1	1	ø12.7
15	E22 838 704	DRAIN SOCKET		1	1	
16	E22 Y86 662	STOP VALVE (LIQUID)		1	1	ø6.35
17	E22 41G 645	EXPANSION VALVE ASSEMBLY		1	1	SQ00J870G06 Includes LEV body, Capillary tube (ø4.0 x ø2.4 x 240)
18	E22 Y84 493	EXPANSION VALVE COIL	LEV	1	1	
19	E22 Y86 490	R.V. COIL	21S4	1	1	
20	E22 J44 961	4-WAY VALVE		1	1	
21	E22 Y86 650	VALVE COVER		1	1	
22	E22 Y86 245	SERVICE PANEL		1	1	
23	E22 Y86 233	BACK PANEL		1	1	
24	E22 Y86 309	AMBIENT TEMPERATURE THERMISTOR	RT65	1	1	Includes thermo holder
25	E22 C34 307	OUTDOOR HEAT EXCHANGER TEMPERATURE THERMISTOR	RT68	1	1	
26	E22 Y86 306	THERMISTOR SET	RT61, RT62	1	1	DEFROST, DISCHARGE
27	E22 H21 337	REACTOR	L61	1	1	
28	E22 T95 374	TERMINAL BLOCK	TB1	1	1	5 P
29	E22 61H 451	INVERTER P.C. BOARD		1	1	Includes heat sink and RT64
30	E22 Y86 525	CONDENSER WIRE NET		1	1	
31	E22 Y86 515	MOTOR SUPPORT		1	1	
32	—	PB SUPPORT		1	1	RK00A627G01
33	—	PB COVER		1	1	DY00B947G02
34	—	COMPRESSOR LEAD WIRE		1	1	DY78C464G02
35	—	COMPRESSOR FELT (TOP)		1	1	SQ33J842H03
36	—	COMPRESSOR FELT (BODY)		1	1	SQ33Y585H02
37	—	COMPRESSOR FELT (OUTER)		1	1	SG33V226H04

**MUZ-AP71VG -E1, ET1**

**1-20. OUTDOOR UNIT STRUCTURAL PARTS, ELECTRICAL PARTS AND FUNCTIONAL PARTS**





## 1-20. OUTDOOR UNIT STRUCTURAL PARTS, ELECTRICAL PARTS AND FUNCTIONAL PARTS

Part numbers that are circled are not shown in the illustration.

No.	Part No.	Part Name	Symbol in Wiring Diagram	Q'ty/unit		Remarks
				MUZ-AP		
				71VG- [E1]	71VG- [ET1]	
1	E22 L87 297	TOP PANEL		1	1	
2	E22 67H 630	OUTDOOR HEAT EXCHANGER		1	1	
3	E22 42G 301	OUTDOOR FAN MOTOR	MF	1	1	RC0J77-□□
4	E22 F28 501	PROPELLER FAN		1	1	
5	E22 817 009	HANDLE		1	1	
6	E22 R13 232	CABINET		1	1	
7	E22 Y87 521	FAN GUARD		1	1	Includes ice guard
8	—	BLAND LABEL		1	1	DK79G041H02
9	E27 L05 508	PROPELLER FAN NUT		1	1	
10	E22 F28 290	BASE		1	1	
11	E22 C34 506	COMPRESSOR RUBBER SET		3	3	3 RUBBERS/SET
12	E22 R86 900	COMPRESSOR	MC	1	1	SVB172FCKMT
13	E22 G16 662	STOP VALVE (LIQUID)		1	1	ø6.35
14	E22 G16 661	STOP VALVE (GAS)		1	1	ø12.7
15	E27 M74 645	EXPANSION VALVE ASSEMBLY		1	1	SQ00J608G06 Includes LEV body, Capillary tube (ø4.0 x ø2.4 x 100)
16	E22 Y87 493	EXPANSION VALVE COIL	LEV	1	1	
17	E22 R84 490	R.V. COIL	21S4	1	1	
18	E22 J44 961	4-WAY VALVE		1	1	
19	E22 F28 650	VALVE COVER		1	1	
20	E22 Y87 245	SERVICE PANEL		1	1	
21	E22 J52 233	BACK PANEL		1	1	
22	E22 29F 309	AMBIENT TEMPERATURE THERMISTOR	RT65	1	1	Includes thermo holder
23	E22 R84 308	THERMISTOR SET	RT61, RT62, RT68	1	1	DEFROST, DISCHARGE, OUTDOOR HEAT EXCHANGER TEMPERATURE
24	E22 F29 374	TERMINAL BLOCK	TB1	1	1	3 P
25	E22 T16 374	TERMINAL BLOCK	TB2	1	1	3 P
26	E22 67H 451	INVERTER P.C. BOARD		1	1	Includes heat sink and RT64
27	E22 R84 337	REACTOR	L	1	1	
28	E22 L87 523	CONDENSER NET		1	1	
29	E22 F28 515	MOTOR SUPPORT		1	1	
30	E27 K72 293	SEPARATOR		1	1	
31	E22 F28 704	DRAIN SOCKET		1	1	
32	—	ELECTRICAL PARTS BOX		1	1	SQ00J359G18
33	—	COMPRESSOR LEAD ASSEMBLY		1	1	VM00C604G05
34	—	COMPRESSOR FELT (TOP)		1	1	DQ33N559H03
35	—	COMPRESSOR FELT (BODY)		1	1	SU33V325H03

# **MITSUBISHI ELECTRIC CORPORATION**

HEAD OFFICE: TOKYO BUILDING, 2-7-3, MARUNOUCHI, CHIYODA-KU, TOKYO 100-8310, JAPAN

© Copyright 2017 MITSUBISHI ELECTRIC CORPORATION

Issued: Mar. 2019. No. OBB789 REVISED EDITION-A

Published: Dec. 2017. No. OBB789

Made in Japan

Specifications are subject to change without notice.