



PARTS CATALOG

R32

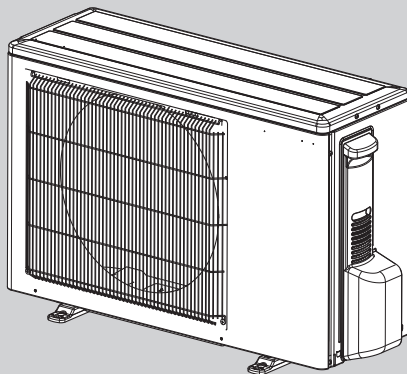
[Model Name]	[Service Ref.]
SUZ-M25VA	SUZ-M25VA.TH
SUZ-M25VA-ET	SUZ-M25VA-ET.TH
SUZ-M35VA	SUZ-M35VA.TH
SUZ-M35VA-ET	SUZ-M35VA-ET.TH
SUZ-M50VA	SUZ-M50VA.TH
SUZ-M50VA-ET	SUZ-M50VA-ET.TH
SUZ-M60VA	SUZ-M60VA.TH
SUZ-M60VA-ET	SUZ-M60VA-ET.TH
SUZ-M71VA	SUZ-M71VA.TH
SUZ-M71VA-ET	SUZ-M71VA-ET.TH

Revision:
• Some descriptions have been modified in REVISED EDITION-A.

OCB684 is void.

CONTENTS

1. SERVICE PARTS LIST..... 2

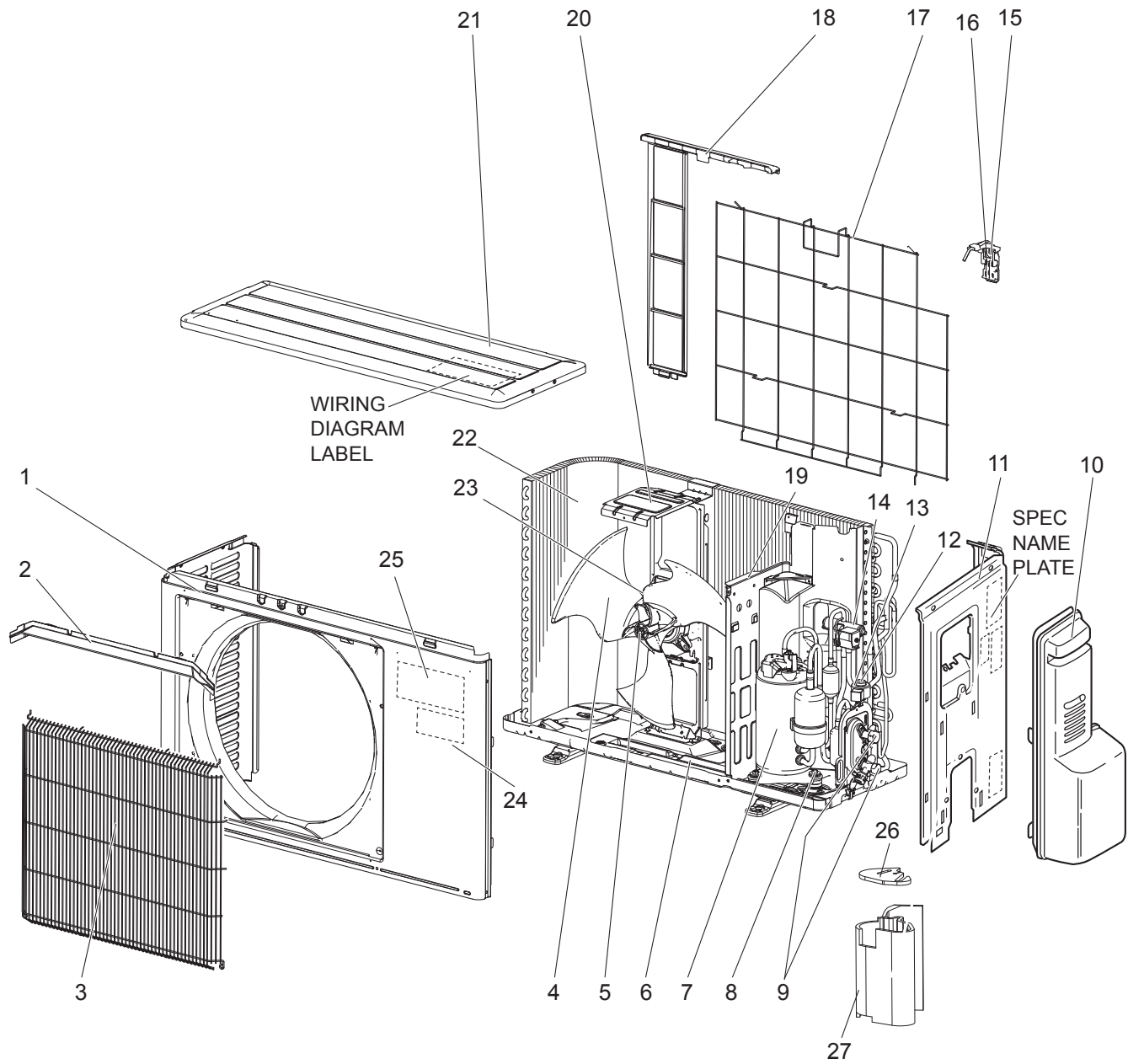


SUZ-M25VA.TH
SUZ-M35VA.TH

SERVICE MANUAL (OCH684)

SUZ-M25VA.TH SUZ-M25VA-ET.TH

1-1. OUTDOOR UNIT STRUCTURAL PARTS AND FUNCTIONAL PARTS

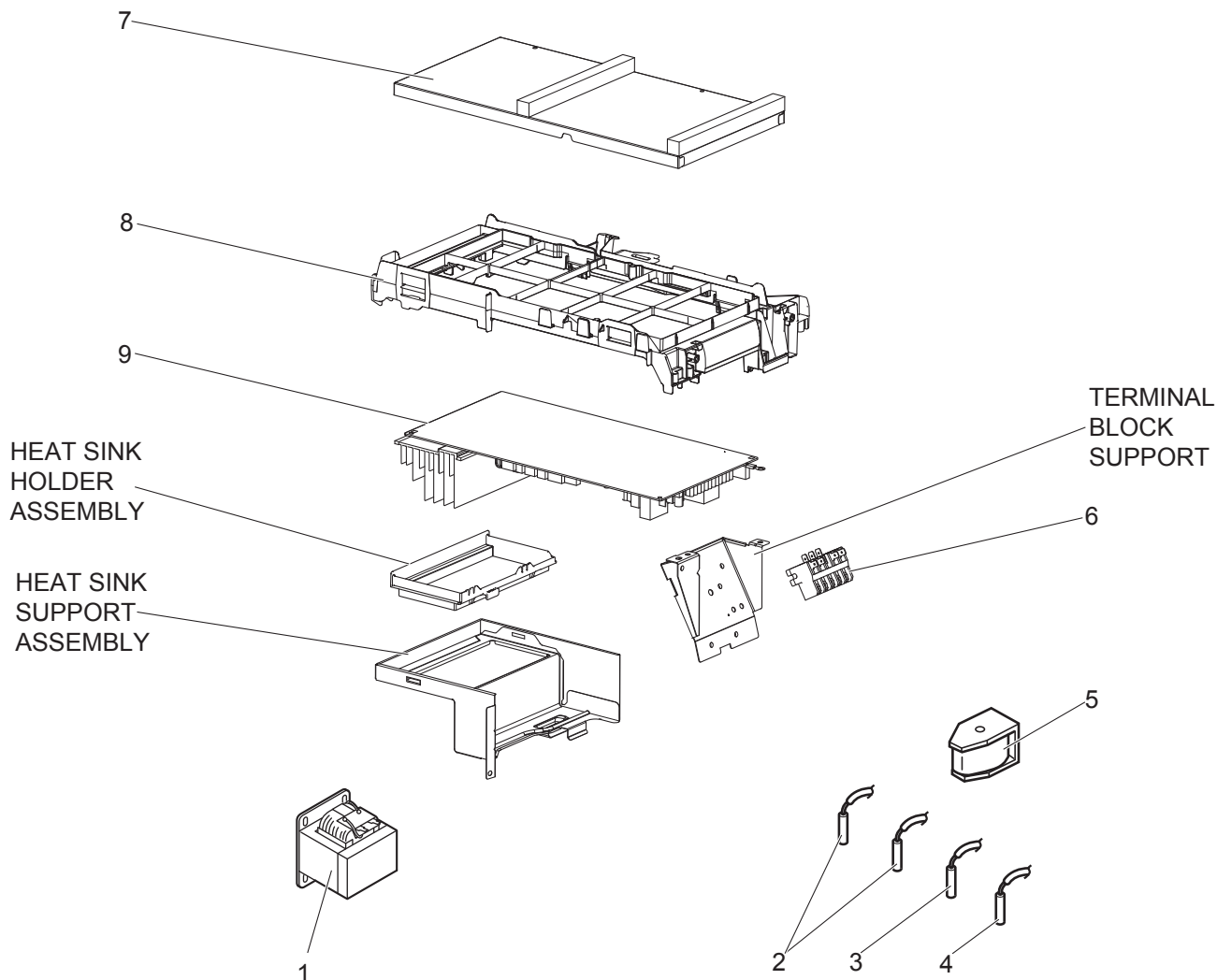


1-1. OUTDOOR UNIT STRUCTURAL PARTS AND FUNCTIONAL PARTS

Part numbers that are circled are not shown in the illustration.

No.	Part No.	Part Name	Symbol in Wiring Diagram	Q'ty/unit	Remarks
				SUZ-M25VA.TH SUZ-M25VA-ET.TH	
1	E27 M71 232	CABINET		1	
2	E22 J63 531	ICE GUARD		1	
3	E22 Y84 521	GRILLE (OUT)		1	
4	E22 95B 501	PROPELLER FAN		1	
5	E27 L05 508	PROPELLER FAN NUT		1	
6	E22 Y84 290	BASE		1	
7	E22 R81 900	COMPRESSOR	MC	1	KVB073FYXMC
8	E22 065 506	COMPRESSOR RUBBER MOUNT		3	3 pcs/SET
9	E27 M71 663	STOP VALVE ASSY		1	Includes STOP VALVES (LIQ, GAS)
10	E22 L59 245	SERVICE PANEL		1	
11	E22 G11 233	BACK PANEL (OUT)		1	
12	E27 M71 645	EXPANSION VALVE ASSY		1	Includes LEV body, Capillary tube
13	E22 Y87 493	EXPANSION VALVE COIL	LEV	1	
14	E22 R81 961	4-WAY VALVE		1	
15	E22 928 079	THERMO HOLDER		1	For RT65
16	E27 M71 078	THERMO COVER		1	For RT65
17	E27 M71 525	CONDENSER WIRE NET		1	
18	E22 928 523	CONDENSER NET		1	
19	E22 G10 293	SEPARATOR		1	
20	E22 97B 515	MOTOR SUPPORT		1	
21	E22 L85 297	TOP PANEL		1	
22	E27 M71 630	OUTDOOR HEAT EXCHANGER		1	
23	E22 97B 301	OUTDOOR FAN MOTOR	MF	1	
24	————	BRAND LABEL		1	BT79L209H01
25	————	BRAND LABEL		1	DK79G041H02
26	————	COMP FELT (TOP)		1	RK33J744H01
27	————	COMP FELT (BODY)		1	RK33J460H01
28	————	COMP FELT (OUTER)		1	SG33V226H04
29	————	LEAD ASSY COMP		1	BT78L315G01
30	E22 838 704	DRAIN SOCKET		1	
31	E27 N04 250	T.ST SCREW		19	

SUZ-M25VA.TH SUZ-M25VA-ET.TH
1-2. OUTDOOR UNIT ELECTRICAL PARTS



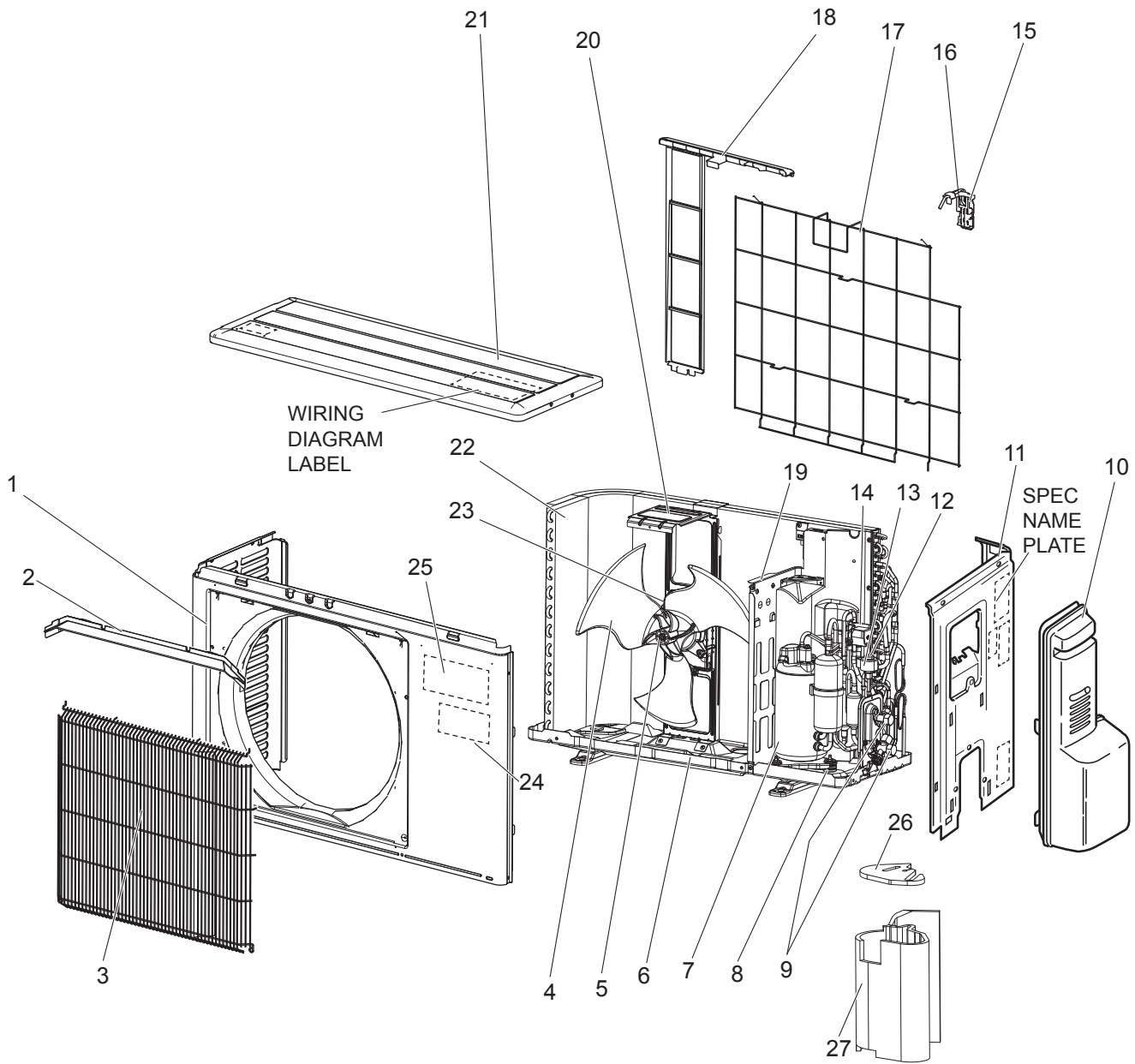
No.	Part No.	Part Name	Symbol in Wiring Diagram	Q'ty/unit		Remarks
				SUZ-M25VA.TH	SUZ-M25VA-ET.TH	
1	E22 11C 337	REACTOR	L61	1		
2	E22 C34 306	THERMISTOR-W	RT61, RT62	1		
3	E22 927 308	THERMISTOR	RT65	1		
4	E22 M71 307	THERMISTOR	RT68	1		
5	E22 J47 490	SOLENOID COIL	21S4	1		
6	E22 T95 374	TERMINAL BLOCK	TB1	1		
7	—	PB COVER		1		RK00L116G02
8	—	PB SUPPORT		1		RK00A867G01
9	E27 M71 451	INVERTER P.C. BOARD		1		Includes HEAT SINK and RT64



This page is intentionally left blank to make double-page spread.

SUZ-M35VA.TH SUZ-M35VA-ET.TH

1-3. OUTDOOR UNIT STRUCTURAL PARTS AND FUNCTIONAL PARTS

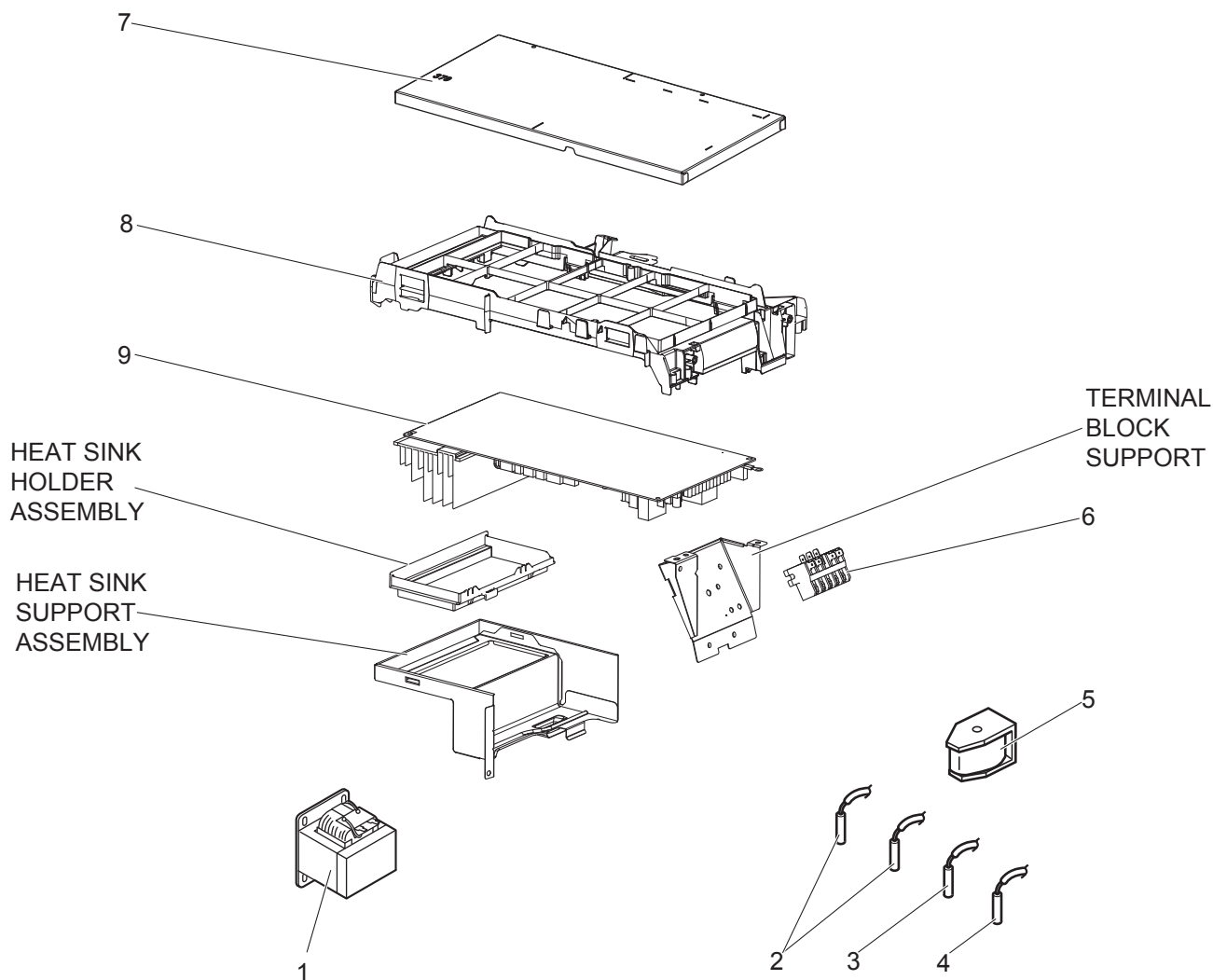


1-3. OUTDOOR UNIT STRUCTURAL PARTS AND FUNCTIONAL PARTS

Part numbers that are circled are not shown in the illustration.

No.	Part No.	Part Name	Symbol in Wiring Diagram	Q'ty/unit	Remarks
				SUZ-M35VA.TH SUZ-M35VA-ET.TH	
1	E27 M71 232	CABINET		1	
2	E22 J63 531	ICE GUARD		1	
3	E22 Y84 521	GRILLE (OUT)		1	
4	E22 95B 501	PROPELLER FAN		1	
5	E27 L05 508	PROPELLER FAN NUT		1	
6	E22 Y84 290	BASE		1	
7	E22 Y85 900	COMPRESSOR	MC	1	SVB092FBAMT
8	E22 C34 506	COMPRESSOR RUBBER MOUNT		3	3 pcs/SET
9	E27 M72 663	STOP VALVE ASSY		1	Includes STOP VALVES (LIQ, GAS)
10	E22 L59 245	SERVICE PANEL		1	
11	E22 G15 233	BACK PANEL (OUT)		1	
12	E27 M72 645	EXPANSION VALVE ASSY		1	Includes LEV body, Capillary tube
13	E22 Y87 493	EXPANSION VALVE COIL	LEV	1	
14	E22 R81 961	4-WAY VALVE		1	
15	E22 930 079	THERMO HOLDER		1	For RT65
16	E27 M71 078	THERMO COVER		1	For RT65
17	E22 930 525	CONDENSER WIRE NET		1	
18	E22 930 523	CONDENSER NET		1	
19	E22 G11 293	SEPARATOR		1	
20	E22 14F 515	MOTOR SUPPORT		1	
21	E22 L85 297	TOP PANEL		1	
22	E27 M72 630	OUTDOOR HEAT EXCHANGER		1	
23	E22 97B 301	OUTDOOR FAN MOTOR	MF	1	
24	————	BRAND LABEL		1	BT79L209H01
25	————	BRAND LABEL		1	DK79G041H02
26	————	COMP FELT (TOP)		1	RK33J459H01
27	————	COMP FELT (BODY)		1	RK33J460H01
28	————	COMP FELT (OUTER)		1	SG33V226H04
29	————	LEAD ASSY COMP		1	BT78L459G01
30	E22 838 704	DRAIN SOCKET		1	
31	E27 N04 250	T.ST SCREW		19	

SUZ-M35VA.TH SUZ-M35VA-ET.TH
1-4. OUTDOOR UNIT ELECTRICAL PARTS

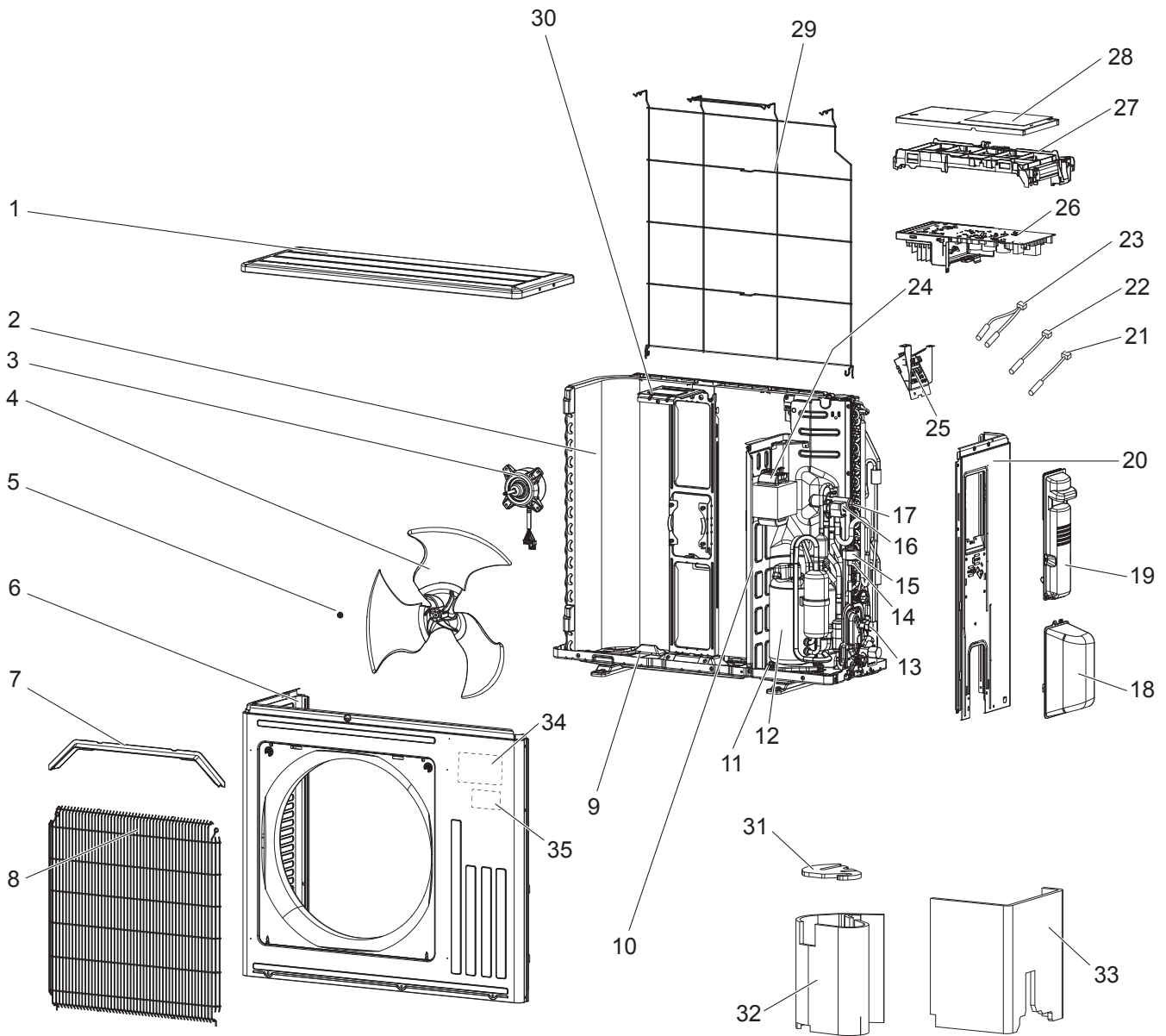


No.	Part No.	Part Name	Symbol in Wiring Diagram	Q'ty/unit		Remarks
				SUZ-M35VA.TH	SUZ-M35VA-ET.TH	
1	E22 G11 337	REACTOR	L61	1		
2	E22 C34 306	THERMISTOR-W	RT61, RT62	1		
3	E22 927 308	THERMISTOR	RT65	1		
4	E22 C34 307	THERMISTOR	RT68	1		
5	E22 J47 490	SOLENOID COIL	21S4	1		
6	E22 T95 374	TERMINAL BLOCK	TB1	1		
7	—	PB COVER		1		RK00L116G02
8	—	PB SUPPORT		1		RK00A867G01
9	E27 M72 451	INVERTER P.C. BOARD		1		Includes HEAT SINK and RT64



This page is intentionally left blank to make double-page spread.

SUZ-M50VA.TH SUZ-M50VA-ET.TH
1-5. OUTDOOR UNIT STRUCTURAL PARTS, ELECTRICAL PARTS AND FUNCTIONAL PARTS



1-5. OUTDOOR UNIT STRUCTURAL PARTS, ELECTRICAL PARTS AND FUNCTIONAL PARTS

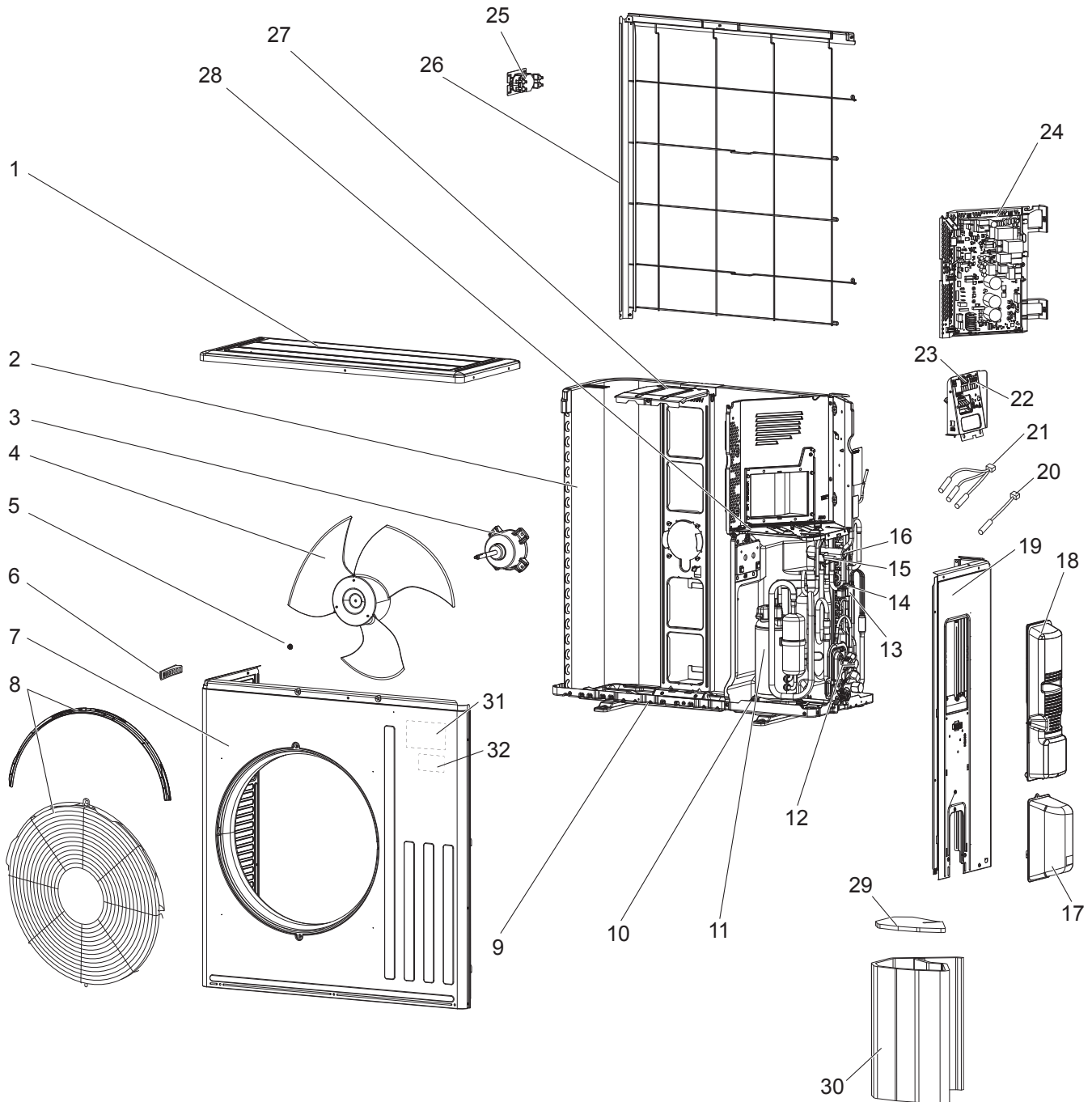
Part numbers that are circled are not shown in the illustration.

No.	Part No.	Part Name	Symbol in Wiring Diagram	Q'ty/unit	
				SUZ-M50VA.TH	SUZ-M50VA-ET.TH
1	E22 Y86 297	TOP PANEL		1	
2	E22 Y86 630	OUTDOOR HEAT EXCHANGER		1	
3	E22 Y86 301	OUTDOOR FAN MOTOR	MF	1	
4	E22 Y86 501	PROPELLER FAN		1	
5	E27 L05 508	PROPELLER FAN NUT		1	
6	E22 Y86 232	CABINET		1	
7	E22 Y86 531	ICE GUARD		1	
8	E22 Y86 521	GRILLE (OUT)		1	
9	E22 Y84 290	BASE		1	
10	E22 Y86 293	SEPARATOR		1	
11	E22 C34 506	COMPRESSOR RUBBER MOUNT		3	3 pcs/set
12	E22 R83 900	COMPRESSOR	MC	1	SVB130FBBMT
13	E27 M73 663	STOP VALVE ASSY		1	Includes STOP VALVES(LIQ, GAS)
14	E27 M73 645	EXPANSION VALVE ASSY		1	Includes LEV body, Capillary tube
15	E12 Y84 493	EXPANSION VALVE COIL	LEV	1	
16	E22 Y86 490	SOLENOID COIL	21S4	1	
17	E22 J44 961	4-WAY VALVE		1	
18	E22 Y86 650	VALVE COVER		1	
19	E22 Y86 245	SERVICE PANEL		1	
20	E22 Y86 233	BACK PANEL (OUT)		1	
21	E27 M73 309	THERMISTOR ASSY AMB	RT65	1	
22	E22 C34 307	THERMISTOR	RT68	1	
23	E22 Y86 306	THERMISTOR-W	RT61, RT62	1	
24	E22 H21 337	REACTOR	L61	1	
25	E22 T95 374	TERMINAL BLOCK	TB1	1	5 P
26	E27 M73 451	INVERTER P.C. BOARD		1	Includes heat sink and RT64
27	————	PB SUPPORT		1	RK00A627G01
28	————	PB COVER		1	RK00L116G02
29	E22 Y86 525	CONDENSER WIRE NET		1	
30	E22 Y86 515	MOTOR SUPPORT		1	
31	————	COMP FELT(TOP)		1	RK33J826H02
32	————	COMP FELT(BODY)		1	RK33J823H01
33	————	COMP FELT(OUTER)		1	SG33V226H04
34	————	BRAND LABEL		1	DK79G041H02
35	————	BRAND LABEL		1	BT79L209H01
③⑥	E22 838 704	DRAIN SOCKET		1	
③⑦	————	LEAD ASSY COMP		1	BT78L235G01
③⑧	E27 N04 250	T.ST SCREW		27	

SUZ-M60VA.TH
SUZ-M71VA.TH

SUZ-M60VA-ET.TH
SUZ-M71VA-ET.TH

1-6. OUTDOOR UNIT STRUCTURAL PARTS, ELECTRICAL PARTS AND FUNCTIONAL PARTS



1-6. OUTDOOR UNIT STRUCTURAL PARTS, ELECTRICAL PARTS AND FUNCTIONAL PARTS

Part numbers that are circled are not shown in the illustration.

No.	Part No.	Part Name	Symbol in Wiring Diagram	Q'ty/unit		Remarks
				SUZ-M60VA.TH SUZ-M60VA-ET.TH	SUZ-M71VA.TH SUZ-M71VA-ET.TH	
1	E27 L07 297	TOP PANEL		1	1	
2	E27 M74 630	OUTDOOR HEAT EXCHANGER		1	1	
3	E22 F28 301	OUTDOOR FAN MOTOR	MF	1	1	
4	E22 F28 501	PROPELLER FAN		1	1	
5	E27 L05 508	PROPELLER FAN NUT		1	1	
6	E22 817 009	HANDLE		1	1	
7	E22 R13 232	CABINET		1	1	
8	E22 Y87 521	FAN GUARD		1	1	
9	E22 F28 290	BASE		1	1	
10	E22 C34 506	COMPRESSOR RUBBER MOUNT		3	3	3pcs/set
11	E22 R83 900	COMPRESSOR	MC	1		SVB130FBBMT
	E22 R86 900				1	SVB172FCKMT
12	E27 M74 663	STOP VALVE ASSY		1		Includes STOP VALVES(LIQ, GAS)
	E27 M75 663				1	
13	E27 M74 645	EXPANSION VALVE ASSY		1	1	Includes LEV body, Capillary tube
14	E27 M74 493	EXPANSION VALVE COIL	LEV	1	1	
15	E22 R84 490	SOLENOID COIL	21S4	1	1	
16	E22 J44 961	4-WAY VALVE		1	1	
17	E22 F28 650	VALVE COVER		1	1	
18	E22 Y87 245	SERVICE PANEL		1	1	
19	E22 J52 233	BACK PANEL(OUT)		1	1	
20	E22 29F 309	THERMISTOR ASSY AMB	RT65	1	1	
21	E22 R84 308	THERMISTOR-T	RT61,RT62, RT68	1	1	
22	E22 F29 374	TERMINAL BLOCK	TB1	1	1	
23	E22 T16 374	TERMINAL BLOCK	TB2	1	1	
24	E27 M74 451	INVERTER P.C. BOARD		1		Includes HEAT SINK and RT64
	E27 M75 451				1	
25	E22 R84 337	REACTOR	L	1	1	
26	E22 L87 523	CONDENSER NET		1	1	
27	E22 F28 515	MOTOR SUPPORT		1	1	
28	E27 M74 293	SEPARATOR		1	1	
29	————	COMP FELT(TOP)		1	1	RK33J795H01
30	————	COMP FELT(BODY)		1	1	RK33J456H01
31	————	BRAND LABEL		1	1	DK79G041H02
32	————	BRAND LABEL		1	1	BT79L209H01
③③	————	ELECTRICAL PARTS BOX		1	1	SQ00J359G18
③④	————	LEAD ASSY COMP		1	1	BT78L236G01
③⑤	E22 F28 704	DRAIN SOCKET		1	1	
③⑥	E27 N04 250	T.ST SCREW		30	30	

Mr. SLIM

mitsubishi electric corporation

HEAD OFFICE: TOKYO BUILDING., 2-7-3, MARUNOUCHI, CHIYODA-KU, TOKYO100-8310, JAPAN