

PARTS CATALOG

R32

Outdoor unit
[Model Name]

[Service Ref.]

PUZ-ZM35VKA

PUZ-ZM35VKA

PUZ-ZM35VKA-ER

PUZ-ZM35VKA-ET

PUZ-ZM35VKA-ER

PUZ-ZM50VKA

PUZ-ZM50VKA

PUZ-ZM50VKA-ER

PUZ-ZM50VKA-ET

PUZ-ZM50VKA-ER

PUZ-ZM60VHA

PUZ-ZM60VHA

PUZ-ZM60VHA-ER

PUZ-ZM60VHA-ET

PUZ-ZM60VHA-ER

PUZ-ZM71VHA

PUZ-ZM71VHA

PUZ-ZM71VHAR1

PUZ-ZM71VHA-ET

PUZ-ZM71VHAR1-ET

PUZ-ZM71VHA-ER

PUZ-ZM71VHA-ER

Revision:

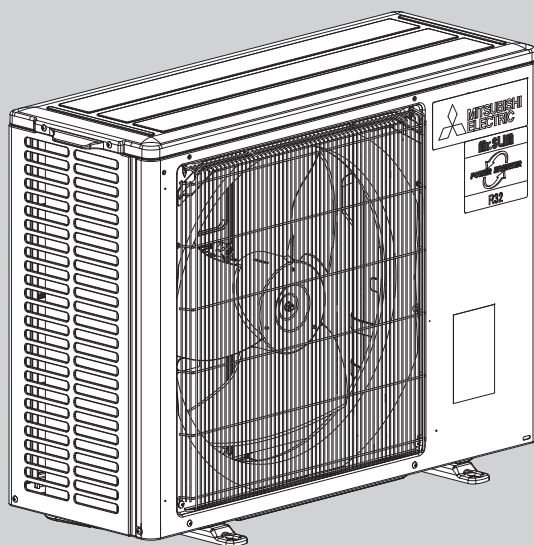
•Added

PUZ-ZM71VHAR1 and

PUZ-ZM71VHA-ET

in REVISED EDITION-C.

OCB653 REVISED EDITION-B
is void.



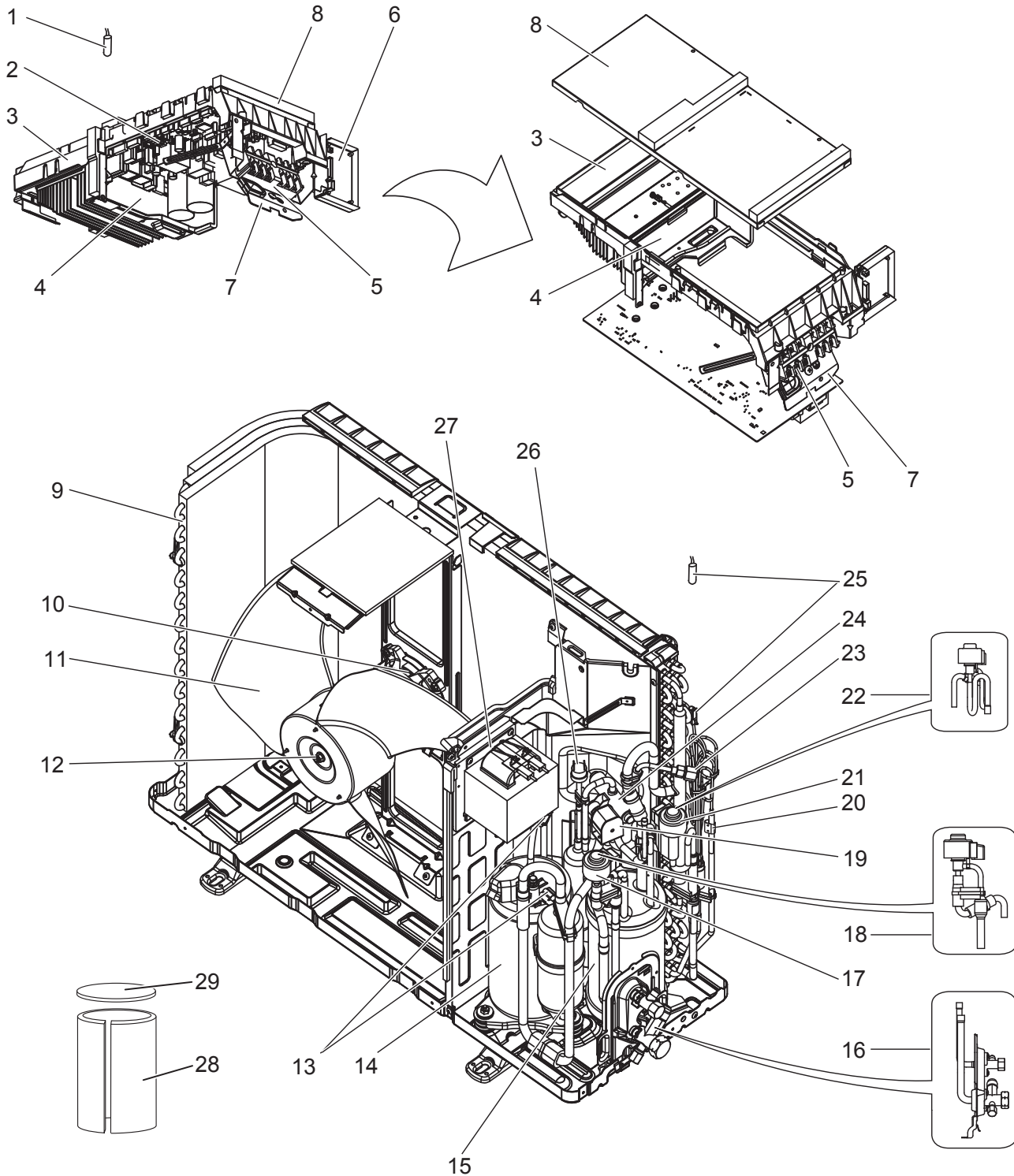
PUZ-ZM35VKA(-ET/-ER)
PUZ-ZM50VKA(-ET/-ER)

CONTENTS

1. SERVICE PARTS LIST..... 2

SERVICE MANUAL (OCH653)

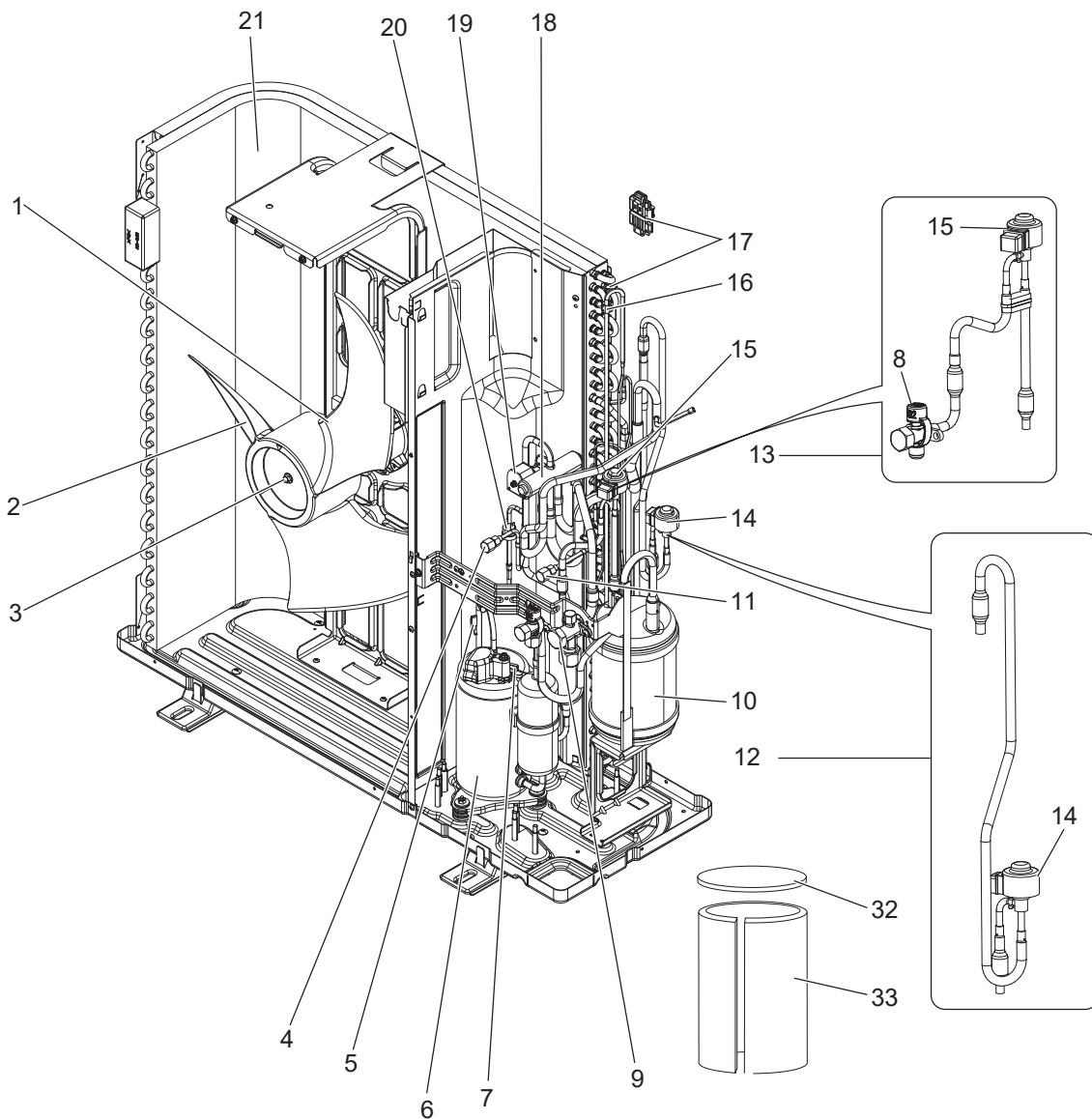
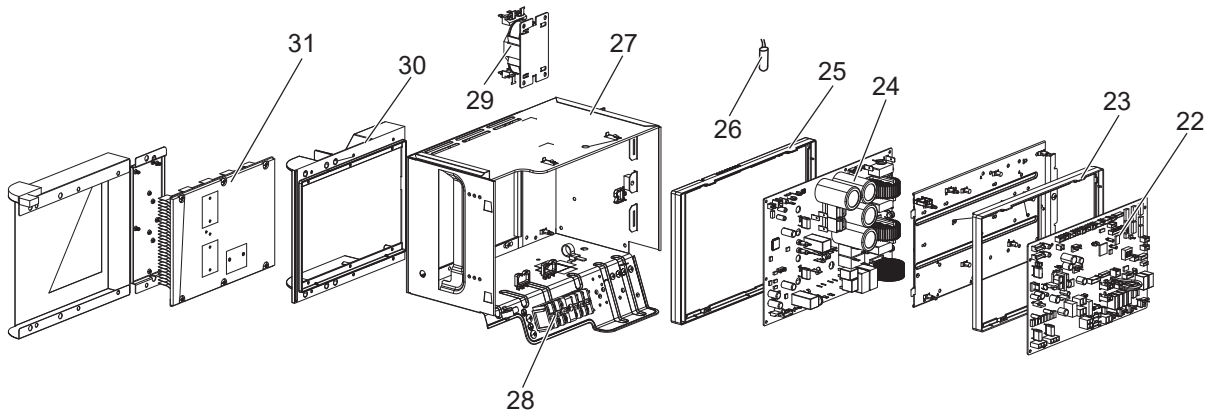
**FUNCTIONAL AND ELECTRICAL PARTS
PUZ-ZM35VKA(-ET/-ER) PUZ-ZM50VKA(-ET/-ER)**



Parts numbers that are circled are not shown in the figure.

No.	Parts No.	Parts Name	Specification	Q'ty/unit		Remarks (Drawing No.)	Wiring Diagram Symbol
				PUZ-ZM35VKA(-ET/-ER)	PUZ-ZM50VKA(-ET/-ER)		
1	R01 M17 202	THERMISTOR(HS)	Heat Sink	1	1		TH8
2	T7W HH0 315	CONTROLLER BOARD		1	1		C.B.
3	R01 E00 327	P.B. SUPPORT		1	1		
4	R01 E01 327	H.S. SUPPORT		1	1		
5	T7W E71 716	T.B./LNE.S1.S2.S3	6P (L,N,⊕,S1,S2,S3)	1	1		TB1
6	R01 E00 316	SWITCH BOARD		1	1		S.B.
7	—	T.B. SUPPORT		1	1	(BK00L098G07)	
8	R01 E00 325	P.B. COVER		1	1		
9	R01 H50 408	HEAT EXCHANGER		1	1		
10	R01 E55 221	FAN MOTOR		1	1		MF1
11	R01 E11 115	PROPELLER FAN		1	1		
12	R01 E03 097	NUT M6-L		1	1		
13	R01 M09 202	THERMISTOR DS	Discharge, Comp. surface	1	1		TH4,TH33
14	T97 425 607	COMPRESSOR	SVB140FFSM	1	1	Includes RUBBER MOUNT	MC
15	T7W H30 440	POWER RECEIVER		1	1		
16	T7W E10 410	STOP VALVE ASSY		1	1	Includes STRAINER	
17	R01 H38 242	COIL (LEV)/XAP-5P RED		1	1		LEV-B
18	R01 R90 401	LEV ASSY-B/REC-V		1	1	Includes coil for LEV-B	LEV-B
19	T7W H01 242	SOLENOID COIL (21S4)	4-WAY VALVE	1	1		21S4
20	R01 N25 202	THERMISTOR	Liquid	1	1		TH3
21	R01 H37 242	COIL (LEV)/XAP-5P WH		1	1		LEV-A
22	R01 R15 401	LEV ASSY-A/C-REC		1	1	Includes coil for LEV-A	LEV-A
23	R01 E24 413	CHARGE PLUG/LB90		1	1		
24	R01 E41 403	4-WAY VALVE		1	1		21S4
25	R01 H83 202	THERMISTOR W	2-Phase Pipe, Ambient	1	1		TH6,TH7
26	R01 H06 208	HIGH PRESSURE SWITCH		1	1		63H
27	R01 E46 259	REACTOR		1	1		ACL
28	R01 A52 602	COMP FELT (BODY)		1	1		
29	R01 A53 602	COMP FELT (TOP)		1	1		
30	R01 E21 239	FUSE 10A 250V	10A 250V	2	2		F1,F2
31	R01 E17 239	FUSE 3.15A 250V	3.15A 250V	2	2		F3,F4
32	R01 E11 510	LEAD ASSY COMP		1	1		

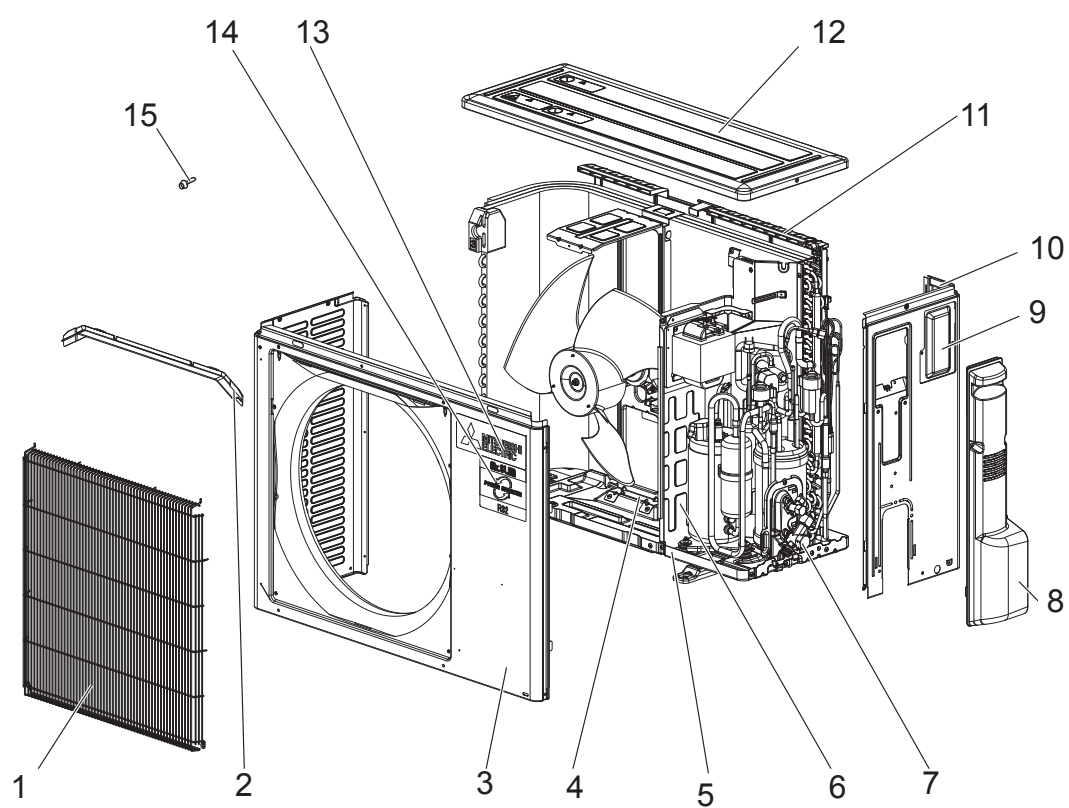
FUNCTIONAL AND ELECTRICAL PARTS
PUZ-ZM60VHA(-ET/-ER) PUZ-ZM71VHA(-ET/-ER)
PUZ-ZM71VHAR1(-ET)



Parts numbers that are circled are not shown in the figure.

No.	Parts No.	Parts Name	Specification	Q'ty/unit			Remarks (Drawing No.)	Wiring Diagram Symbol
				PUZ-ZM60VHA(-ET/-ER)	PUZ-ZM71VHA(-ET/-ER)	PUZ-ZM71VHAR1(-ET)		
1	R01 E72 221	FAN MOTOR		1	1	1		MF1
2	R01 E12 115	PROPELLER FAN		1	1	1		
3	R01 E16 097	CAP NUT(MEC) M6		1	1	1		
4	R01 E24 413	CHARGE PLUG/LB90		1	1	1		
5	R01 E34 201	THERMISTOR(DIS)	Discharge	1	1	1		TH4
6	T97 437 607	COMPRESSOR	SNB172FFUM1	1	1	1	Includes RUBBER MOUNT	MC
7	R01 E45 201	THERMISTOR(SHELL)	Comp. surface	1	1	1		TH33
8	R01 E25 410	STOP VALVE 3/8F	3/8F	1	1	1		
9	R01 E30 410	STOP VALVE 5/8F	5/8F	1	1	1	Includes STRAINER	
10	R01 H79 440	POWER RECEIVER		1	1	1		
11	R01 E18 413	CHARGE PLUG/ST		1	1	1		
12	R01 K16 401	LEV ASSY-A/C-REC		1	1	1	Includes coil for LEV-A	LEV-A
13	R01 R17 401	LEV ASSY-B/REC-V		1	1	1	Includes coil for LEV-B & STV	LEV-B
14	R01 L00 242	COIL (LEV)/XAP-5P WH		1	1	1		LEV-A
15	R01 H32 242	COIL (LEV)/XAP-5P RED		1	1	1		LEV-B
16	R01 H87 202	THERMISTOR	Liquid	1	1	1		TH3
17	R01 M18 202	THERMISTOR W	2-Phase Pipe, Ambient	1	1	1		TH6, 7
18	R01 E42 403	4-WAY VALVE		1	1	1		21S4
19	T7W E89 242	SOLENOID COIL (21S4)	4-WAY VALVE	1	1	1		21S4
20	R01 H06 208	HIGH PRESSURE SWITCH		1	1	1		63H
21	R01 R63 408	HEAT EXCHANGER		1	1	1		
22	T7W HJ0 315	CONTROLLER BOARD		1	1			C.B.
	T7W S07 315	CONTROLLER BOARD				1		C.B.
23	—	BOARD CASE CONT		1	1	1	(BK25J874G02)	
24	T7W B70 323	POWER BOARD		1	1	1		P.B.
25	—	BOARD CASE POWER		1	1	1	(BK25V224G01)	
26	R01 M15 202	THERMISTOR (HS)	Heat Sink	1	1	1		TH8
27	—	ELECTRICAL PARTS BOX		1	1	1	(BK00B472G75)	
28	T7W E71 716	T.B./LNE.S1.S2.S3	6P (L,N,Ⓢ,S1,S2,S3)	1	1	1		TB1
29	T7W E27 259	REACTOR		1	1	1		DCL
30	—	HEAT SINK CASE		1	1	1	(BK00T163G02)	
31	T7W A04 371	HEAT SINK		1	1	1	Includes SCREWS	
32	R01 A59 602	COMP FELT (TOP)		1	1	1		
33	T7W A10 602	COMP FELT (BODY)		1	1	1		
34	R01 E14 239	FUSE 6.3A 250V	6.3A 250V	2	2	2		F3,F4
35	R01 E21 239	FUSE 10A 250V	10A 250V	2	2	2		F1,F2
36	T7W A10 510	LEAD ASSY COMP		1	1	1		

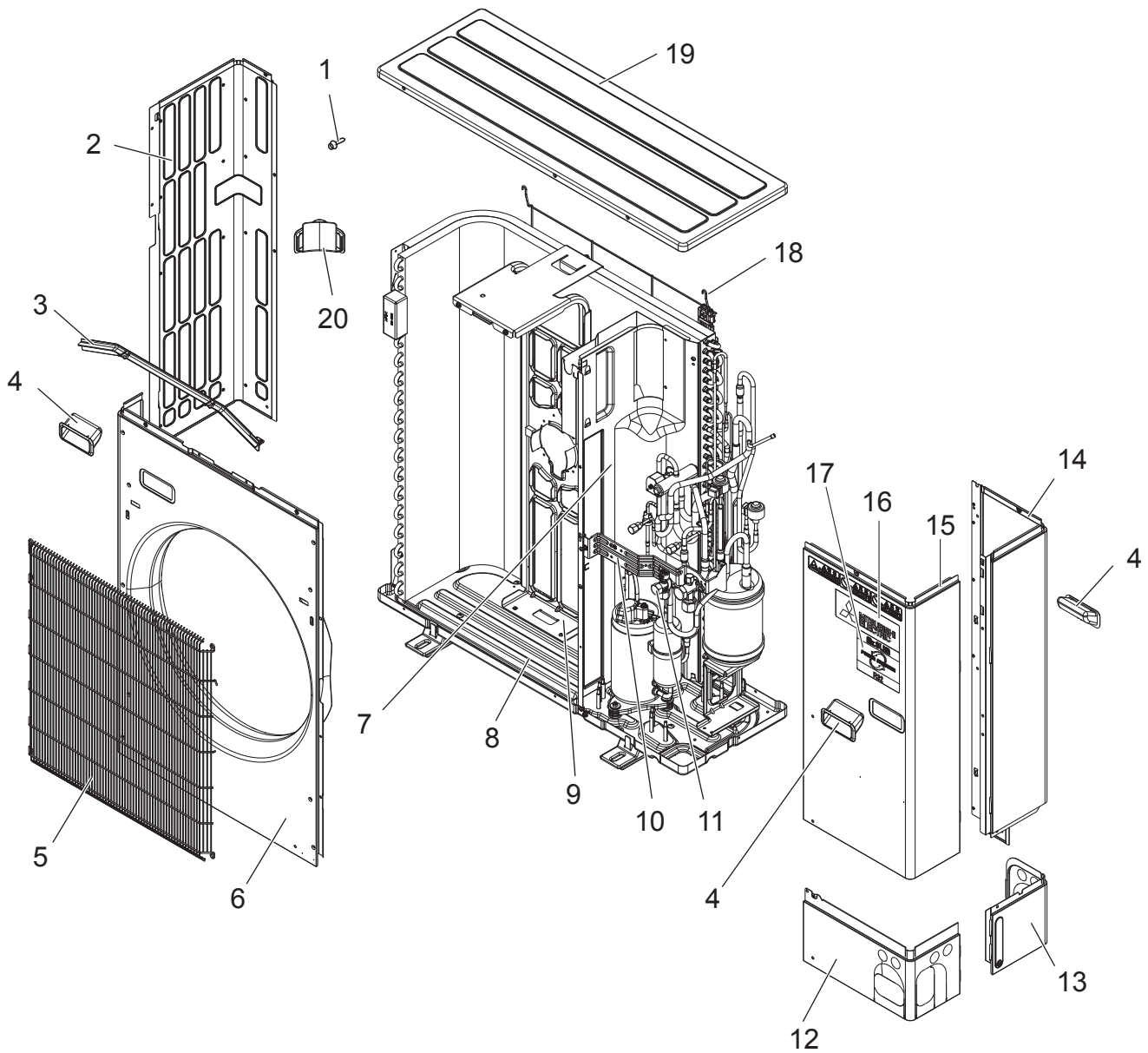
STRUCTURAL PARTS
PUZ-ZM35VKA(-ET/-ER) PUZ-ZM50VKA(-ET/-ER)





No.	Parts No.	Parts Name	Specification	Q'ty/unit		Remarks (Drawing No.)
				PUZ-ZM35VKA(-ET/-ER)	PUZ-ZM50VKA(-ET/-ER)	
1	T7W E11 691	WIRE GRILLE		1	1	
2	R01 E00 631	ICE GUARD		1	1	
3	R01 E21 668	FRONT PANEL		1	1	
4	R01 E46 130	MOTOR SUPPORT		1	1	
5	R01 E43 686	BASE ASSY		1	1	
6	—	SEPARATOR		1	1	(BK00J192G26)
7	T7W A00 455	PORT CAP (R32)		1	1	
8	R01 E28 667	SERVICE PANEL		1	1	
9	R01 E03 633	SERVICE PLATE		1	1	
10	T7W H13 682	BACK PANEL		1	1	Includes SERVICE PLATE
11	R01 E05 684	REAR GUARD		1	1	
12	T7W E15 641	TOP PANEL		1	1	
13	T7W A00 005	BRAND LABEL (ME)		1	1	
14	T7W A12 005	BRAND LABEL (MR. SLIM)		1	1	
15	—	TS.ST SCREW	(4×10)	17	17	(Z504K189H37)

STRUCTURAL PARTS
PUZ-ZM60VHA(-ET/-ER) PUZ-ZM71VHA(-ET/-ER)
PUZ-ZM71VHAR1(-ET)



No.	Parts No.	Parts Name	Specification	Q'ty/unit			Remarks (Drawing No.)
				PUZ-ZM60VHA(-ET/-ER)	PUZ-ZM71VHA(-ET/-ER)	PUZ-ZM71VHAR1(-ET)	
1	—	F.ST SCREW	(5×12)	31	31	31	(BT12L041H12)
2	R 0 1 E 1 9 6 6 2	SIDE PANEL (L)		1	1	1	
3	R 0 1 E 0 1 6 3 1	ICE GUARD		1	1		
	—	ICE GUARD				1	(BK00L153G05)
4	R 0 1 E 0 1 6 5 5	HANDLE		3	3	3	
5	T 7 W E 1 2 6 9 1	WIRE GRILLE		1	1	1	
6	R 0 1 E 2 2 6 6 8	FRONT PANEL		1	1	1	
7	—	SEPARATOR		1	1	1	(BK00C374GY2)
8	R 0 1 E 5 6 6 8 6	BASE ASSY		1	1	1	
9	T 7 W E 2 0 1 3 0	MOTOR SUPPORT		1	1	1	
10	—	VALVE BED		1	1	1	(BK00C375G64)
11	T 7 W A 0 0 4 5 5	PORT CAP (R32)		1	1		
	—	PORT CAP (R32)				1	(DQ26T763H03)
12	R 0 1 E 4 0 6 5 8	COVER PANEL (FRONT)		1	1	1	
13	R 0 1 E 2 4 6 5 8	COVER PANEL (REAR)		1	1	1	
14	T 7 W E 4 1 6 6 1	SIDE PANEL (R)		1	1	1	
15	T 7 W E 1 0 6 6 7	SERVICE PANEL		1	1	1	
16	T 7 W A 0 0 0 0 5	BRAND LABEL (ME)		1	1	1	
17	T 7 W A 1 2 0 0 5	BRAND LABEL (MR. SLIM)		1	1	1	
18	R 0 1 E 0 6 6 9 8	REAR GUARD		1	1	1	
19	R 0 1 E 2 7 6 4 1	TOP PANEL		1	1	1	
20	R 0 1 E 0 2 6 5 5	HANDLE		1	1	1	

Mr. SLIM

MITSUBISHI ELECTRIC CORPORATION

HEAD OFFICE: TOKYO BUILDING, 2-7-3, MARUNOUCHI, CHIYODA-KU, TOKYO 100-8310, JAPAN

©Copyright 2017 MITSUBISHI ELECTRIC CORPORATION
Issued: Sep. 2019 No. OCB653 REVISED EDITION-C
Issued: Nov. 2018 No. OCB653 REVISED EDITION-B
Issued: Feb. 2018 No. OCB653 REVISED EDITION-A
Published: Apr. 2017 No. OCB653
Made in Japan

Specifications are subject to change without notice.