

PARTS CATALOG

R410A
[Model Name]

EHST20C-VM2C
 EHST20C-VM6C
 EHST20C-YM9C
 EHST20C-TM9C
 EHST20C-VM2EC
 EHST20C-VM6EC
 EHST20C-YM9EC
 EHST20C-MHCW
 EHST20C-MEC
 EHST20D-VM2C
 EHST20D-VM2EC
 EHST20D-YM9C
 EHST20D-MHCW
 EHST20D-MEC
 EHST20D-MHC

EHPT20X-VM2C
 EHPT20X-VM6C
 EHPT20X-YM9C
 EHPT20X-TM9C
 EHPT20X-MHCW
 ERST20C-VM2C
 ERST20C-MEC
 ERST20D-VM2C
 ERST20D-MEC
 EHST20D-VM2C2
 ERST20D-VM2C2
 EHPT20X-VM2C2

Revision:

- Some descriptions have been modified in REVISED EDITION-H.

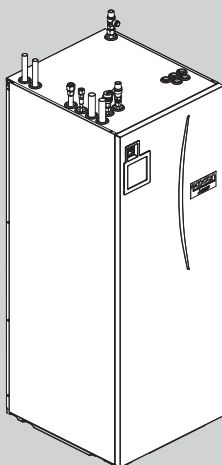
OCB570 REVISED EDITION-G is void.

[Service Ref.]

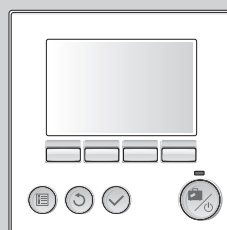
Refer to page 2.

CONTENTS

1. SERVICE PARTS LIST 4
2. OPTIONAL PARTS 52

SERVICE MANUAL (OCH570)


CYLINDER UNIT


 MAIN REMOTE
CONTROLLER

[Service Ref.]

**EHST20C-VM2C.UK
EHST20C-VM6C.UK
EHST20C-YM9C.UK
EHST20C-TM9C.UK
EHST20C-VM2EC.UK
EHST20C-VM6EC.UK
EHST20C-YM9EC.UK
EHST20C-MHCW.UK
EHST20C-MEC.UK
EHST20D-VM2C.UK
EHST20D-VM2EC.UK
EHST20D-YM9C.UK
EHST20D-MHCW.UK
EHST20D-MEC.UK
EHST20D-MHC.UK
EHPT20X-VM2C.UK
EHPT20X-VM6C.UK
EHPT20X-YM9C.UK
EHPT20X-TM9C.UK
EHPT20X-MHCW.UK
ERST20C-VM2C.UK
ERST20C-MEC.UK
ERST20D-VM2C.UK
ERST20D-MEC.UK**

**EHST20C-VM2CR1.UK
EHST20C-VM6CR1.UK
EHST20C-YM9CR1.UK
EHST20C-TM9CR1.UK
EHST20C-VM2ECR1.UK
EHST20C-VM6ECR1.UK
EHST20C-YM9ECR1.UK
EHST20C-MHCWR1.UK
EHST20C-MECR1.UK
EHST20D-VM2CR1.UK
EHST20D-VM2ECR1.UK
EHST20D-YM9CR1.UK
EHST20D-MHCWR1.UK
EHST20D-MECR1.UK
EHST20D-MHCR1.UK
EHPT20X-VM2CR1.UK
EHPT20X-VM6CR1.UK
EHPT20X-YM9CR1.UK
EHPT20X-TM9CR1.UK
EHPT20X-MHCWR1.UK
ERST20C-VM2CR1.UK
ERST20C-MECR1.UK
ERST20D-VM2CR1.UK
ERST20D-MECR1.UK**

**EHST20C-VM2CR2.UK
EHST20C-VM6CR2.UK
EHST20C-YM9CR2.UK
EHST20C-TM9CR2.UK
EHST20C-VM2ECR2.UK
EHST20C-VM6ECR2.UK
EHST20C-YM9ECR2.UK
EHST20C-MHCWR2.UK
EHST20C-MECR2.UK
EHST20D-VM2CR2.UK
EHST20D-VM2ECR2.UK
EHST20D-YM9CR2.UK
EHST20D-MHCWR2.UK
EHST20D-MECR2.UK
EHST20D-MHCR2.UK
EHPT20X-VM2CR2.UK
EHPT20X-VM6CR2.UK
EHPT20X-YM9CR2.UK
EHPT20X-TM9CR2.UK
EHPT20X-MHCWR2.UK
ERST20C-VM2CR2.UK
ERST20C-MECR2.UK
ERST20D-VM2CR2.UK
ERST20D-MECR2.UK**

**EHST20D-VM2C2R2.UK
ERST20D-VM2C2R2.UK
EHPT20X-VM2C2R2.UK**

This page is intentionally left blank.

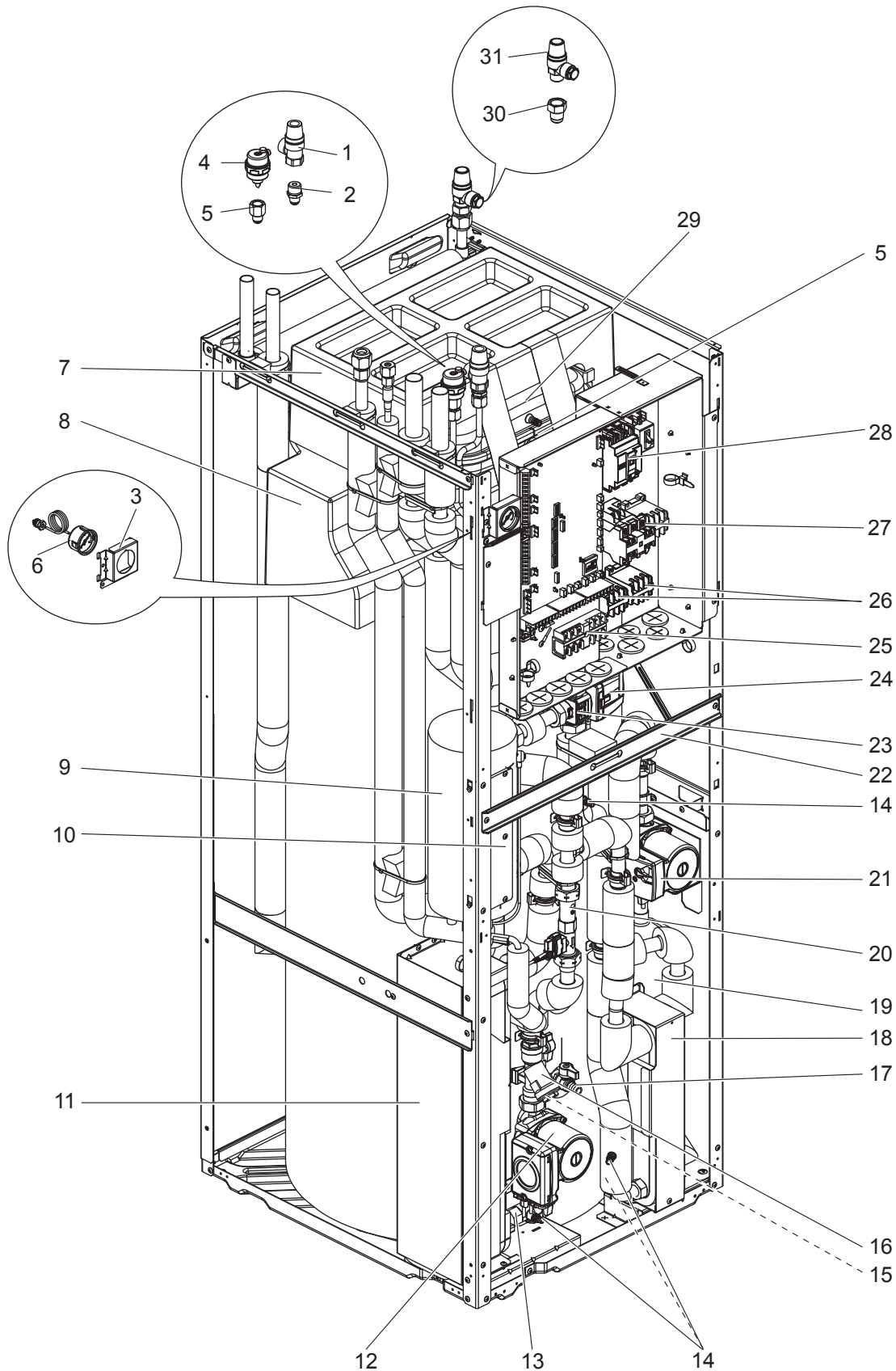
1

SERVICE PARTS LIST

EHST20C-VM2C.UK
EHST20C-VM2CR1.UK
EHST20C-TM9C.UK
EHST20C-TM9CR1.UK

EHST20C-VM6C.UK
EHST20C-VM6CR1.UK
ERST20C-VM2C.UK
ERST20C-VM2CR1.UK

EHST20C-YM9C.UK
EHST20C-YM9CR1.UK



1. The part quantity below indicates the required number of pieces per unit.
2. The circled No. indicates that the part is not shown in the figure.

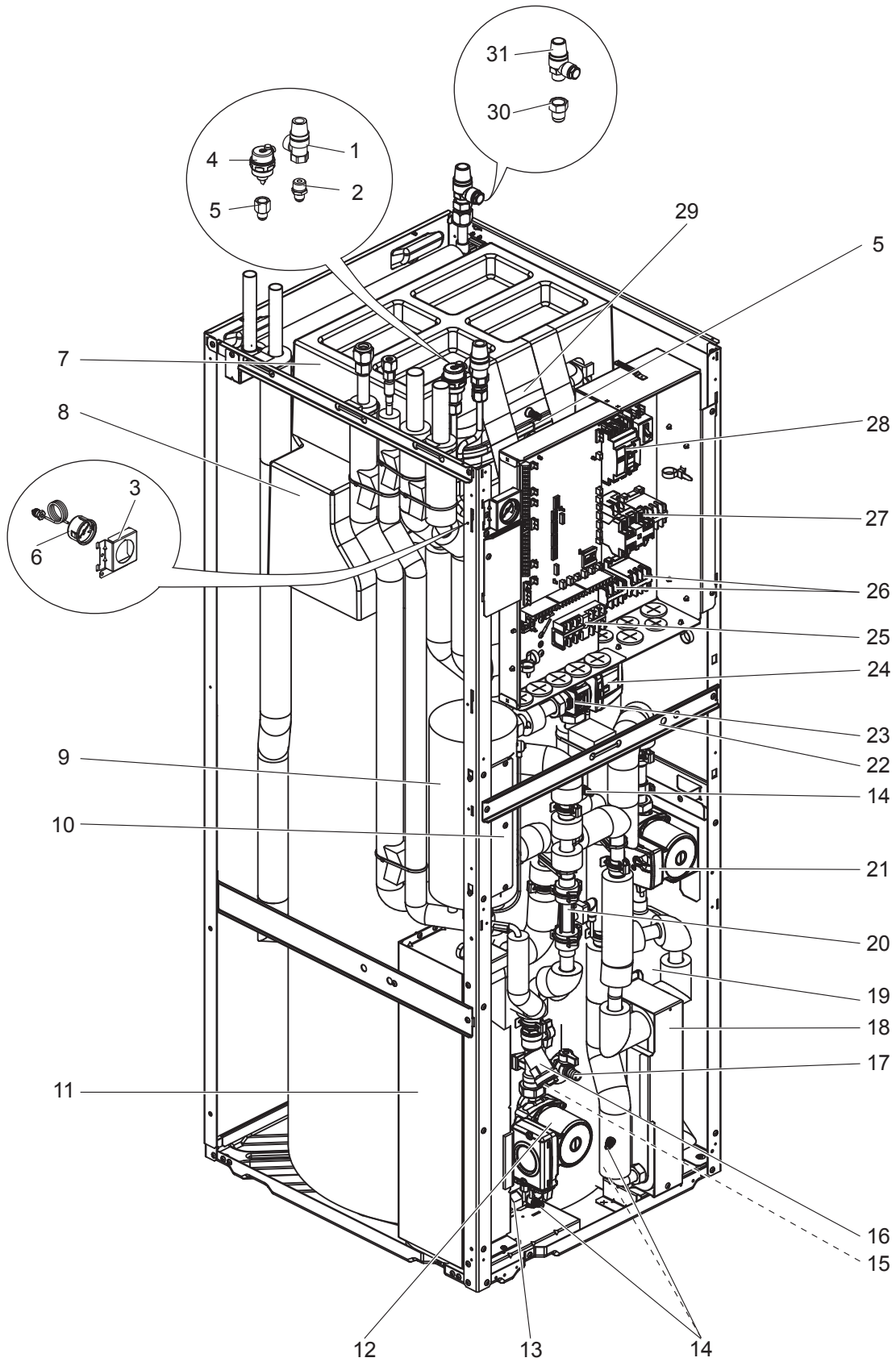
No.	Parts No.	Parts name						Wiring diagram symbol	Remarks [Drawing No.]
			EHST20C-VM2C(R1).UK	EHST20C-VM6C(R1).UK	EHST20C-VM9C(R1).UK	EHST20C-TM9C(R1).UK	ERST20C-VM2C(R1).UK		
1	S70 C21 404	PRESSURE RELIEF VALVE	1	1	1	1	1		3 bar/ 6 years
2	S70 C60 096	FLARE JOINT	1	1	1	1	1		3/8F-R1/2
3	S70 C50 206	MANOMETER STAY	1	1	1	1	1		
4	S70 C17 150	AIR VENT (AUTOMATIC)	1	1	1	1	1		6 years
5	S70 C50 096	FLARE JOINT	2	2	2	2	2		3/8F-G3/8
6	S70 C20 205	MANOMETER	1	1	1	1	1		6 years
7	—	EXPANSION VESSEL CUSHION ASSY	1	1	1	1	1		[BK00T056G02]
8	—	TANK CUSHION TOP ASSY	1	1	1	1	1		[BK00T055G03]
9	S70 C11 441	BOOSTER HEATER	1				1	BH1	1 ϕ 230 V 2 kW
9	S70 C12 441	BOOSTER HEATER		1				BH1, BH2	1 ϕ 230 V 6 kW
9	S70 C13 441	BOOSTER HEATER			1			BH1, BH2	3 ϕ 400 V 9 kW
9	S70 C14 441	BOOSTER HEATER				1		BH1, BH2	3 ϕ 230 V 9 kW
10	—	HEATER STAY	1	1	1	1	1		[BK00R873G02]
11	S70 C70 408	WATER COIL ASSY (5HP)	1	1	1	1	1		MWA2/ REFRIGERANT-WATER
12	S70 C06 355	WATER PUMP	1	1	1	1		MP1	FOR PRIMARY CIRCUIT/ 20,000 hrs (3 years)(*)
12	S70 C09 355	WATER PUMP					1		
13	S70 C20 356	PUMP VALVE	1	1	1	1	1		
14	S70 C10 358	DRAIN COCK/AIR VENT (WATER CAP ASSY 320)	4	4	4	4	4		FOR PRIMARY/SANITARY CIRCUIT 6 years
15	S70 C28 460	STRAINER PACKING	1	1	1	1	1		FOR STRAINER
16	S70 C20 452	STRAINER VALVE	1	1	1	1	1		
17	S70 C15 357	DRAIN COCK	1	1	1	1	1		FOR TANK
18	S70 C80 408	WATER COIL ASSY (W)	1	1	1	1	1		CB18-24H/ WATER-WATER
19	S70 C50 357	SCALE TRAP	1	1	1	1	1		
20	S70 C45 266	FLOW SENSOR (BODY & CABLE)	1	1	1	1	1		
21	S70 C05 355	WATER PUMP	1	1	1	1	1	MP4	FOR SANITARY CIRCUIT
22	—	DIV FRAME H DWG	1	1	1	1	1		[BK00T057G01]
23	S70 C24 406	3WAY VALVE (DIVERTING VALVE)	1	1	1	1	1		
24	S70 C25 762	3WAY VALVE (DIVERTING MOTOR)	1	1	1	1	1	3WV	
25	S70 C20 515	TERMINAL BED	1	1	1	1	1		6P (#250LNE+S123)
26	S70 C39 708	CONTACTOR	1	2	2	2	1	BHC1, BHC2	30 A
27	S70 C49 708	CONTACTOR	1	1	1	1	1	BHCP	32 A
28	S70 C20 239	EARTH LEAKAGE BREAKER	1				1	ECB1	1 ϕ 20 A
28	S70 C60 239	EARTH LEAKAGE BREAKER		1				ECB1	1 ϕ 40 A
28	S70 C70 239	EARTH LEAKAGE BREAKER			1	1		ECB1	3 ϕ 30 A
29	S70 C15 402	EXPANSION VESSEL	1	1	1	1	1		12 L
30	S70 C70 096	FLARE JOINT	1	1	1	1	1		5/8F-R1/2
31	S70 C30 404	PRESSURE RELIEF VALVE	1	1	1	1	1		10 bar
32	S70 C23 460	O-RING	12	12	12	12	12		BLACK
33	S70 C10 465	FASTENER	10	10	10	10	10		
34	S70 C01 800	GREASE	10*	10*	10*	10*	10*		100 g

Do not reuse the O-ring or strainer packing that was once removed, but be sure to replace with a new one.
* Apply grease appropriately on the O-ring for the quick connection in the unit.

EHST20C-VM2CR2.UK
EHST20C-TM9CR2.UK

EHST20C-VM6CR2.UK
ERST20C-VM2CR2.UK

EHST20C-YM9CR2.UK



1. The part quantity below indicates the required number of pieces per unit.
2. The circled No. indicates that the part is not shown in the figure.

No.	Parts No.	Parts name						Wiring diagram symbol	Remarks [Drawing No.]
			EHST20C-VM2CR2.UK	EHST20C-VM6CR2.UK	EHST20C-VM9CR2.UK	EHST20C-TM9CR2.UK	ERST20C-VM2CR2.UK		
1	S70 C21 404	PRESSURE RELIEF VALVE	1	1	1	1	1		3 bar/ 6 years
2	S70 C60 096	FLARE JOINT	1	1	1	1	1		3/8F-R1/2
3	S70 C70 206	MANOMETER STAY	1	1	1	1	1		
4	S70 C17 150	AIR VENT (AUTOMATIC)	1	1	1	1	1		6 years
5	S70 C50 096	FLARE JOINT	2	2	2	2	2		3/8F-G3/8
6	S70 C20 205	MANOMETER	1	1	1	1	1		6 years
7	—	EXPANSION VESSEL CUSHION ASSY	1	1	1	1	1		[BK00T056G02]
8	—	TANK CUSHION TOP ASSY	1	1	1	1	1		[BK00T055G03]
9	S70 C11 441	BOOSTER HEATER	1				1	BH1	1 ϕ 230 V 2 kW
9	S70 C12 441	BOOSTER HEATER		1				BH1, BH2	1 ϕ 230 V 6 kW
9	S70 C13 441	BOOSTER HEATER			1			BH1, BH2	3 ϕ 400 V 9 kW
9	S70 C14 441	BOOSTER HEATER				1		BH1, BH2	3 ϕ 230 V 9 kW
10	—	HEATER STAY	1	1	1	1	1		[BK00R873G02]
11	S70 C70 408	WATER COIL ASSY (5HP)	1	1	1	1	1		MWA2/ REFRIGERANT-WATER
12	S70 C06 355	WATER PUMP	1	1	1	1		MP1	FOR PRIMARY CIRCUIT/ 20,000 hrs (3 years)(*)
12	S70 C09 355	WATER PUMP					1		
13	S70 C20 356	PUMP VALVE	1	1	1	1	1		
14	S70 C10 358	DRAIN COCK/AIR VENT (WATER CAP ASSY 320)	4	4	4	4	4		FOR PRIMARY/SANITARY CIRCUIT 6 years
15	S70 C28 460	STRAINER PACKING	1	1	1	1	1		FOR STRAINER
16	S70 C20 452	STRAINER VALVE	1	1	1	1	1		
17	S70 C15 357	DRAIN COCK	1	1	1	1	1		FOR TANK
18	S70 C80 408	WATER COIL ASSY (W)	1	1	1	1	1		CB18-24H/ WATER-WATER
19	S70 C50 357	SCALE TRAP	1	1	1	1	1		
20	S70 C74 266	FLOW SENSOR (BODY & CABLE)	1	1	1	1	1		
21	S70 C05 355	WATER PUMP	1	1	1	1	1	MP4	FOR SANITARY CIRCUIT
22	—	DIV FRAME H DWG	1	1	1	1	1		[BK02N520G03]
23	S70 C24 406	3WAY VALVE (DIVERTING VALVE)	1	1	1	1	1		
24	S70 C25 762	3WAY VALVE (DIVERTING MOTOR)	1	1	1	1	1	3WV	
25	S70 C20 515	TERMINAL BED	1	1	1	1	1		6P (#250LNE+S123)
26	S70 C39 708	CONTACTOR	1	2	2	2	1	BHC1, BHC2	30 A
27	S70 C49 708	CONTACTOR	1	1	1	1	1	BHCP	32 A
28	S70 C20 239	EARTH LEAKAGE BREAKER	1				1	ECB1	1 ϕ 20 A
28	S70 C60 239	EARTH LEAKAGE BREAKER		1				ECB1	1 ϕ 40 A
28	S70 C70 239	EARTH LEAKAGE BREAKER			1	1		ECB1	3 ϕ 30 A
29	S70 C15 402	EXPANSION VESSEL	1	1	1	1	1		12 L
30	S70 C70 096	FLARE JOINT	1	1	1	1	1		5/8F-R1/2
31	S70 C30 404	PRESSURE RELIEF VALVE	1	1	1	1	1		10 bar/ FOR SANITARY SIDE
32	S70 C23 460	O-RING	10	10	10	10	10		BLACK
33	S70 C26 460	O-RING	2	2	2	2	2		BLACK/ FOR FLOW SENSOR
34	S70 C10 465	FASTENER	10	10	10	10	10		FOR QUICK CONNECTION
35	S70 C20 465	FASTENER	2	2	2	2	2		FOR FLOW SENSOR
36	S70 C01 800	GREASE	12*	12*	12*	12*	12*		100 g / FOR QUICK CONNECTION

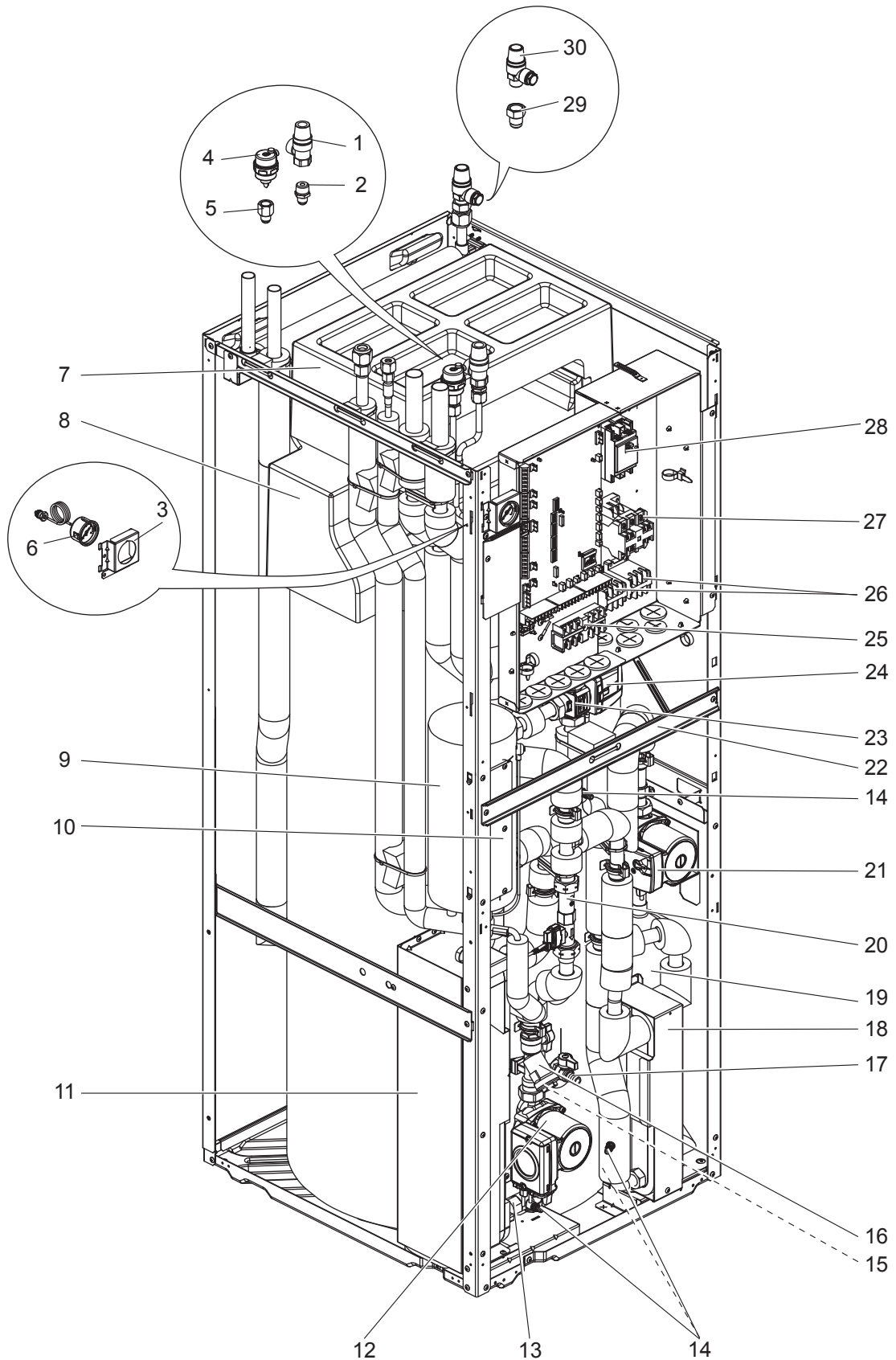
Do not reuse the O-ring or strainer packing that was once removed, but be sure to replace with a new one.

* Apply grease appropriately on the O-ring for the quick connection in the unit.

EHST20C-VM2EC.UK
EHST20C-VM2ECR1.UK
EHST20C-MEC.UK
EHST20C-MECR1.UK

EHST20C-VM6EC.UK
EHST20C-VM6ECR1.UK
ERST20C-MEC.UK
ERST20C-MECR1.UK

EHST20C-YM9EC.UK
EHST20C-YM9ECR1.UK



1. The part quantity below indicates the required number of pieces per unit.
 2. The circled No. indicates that the part is not shown in the figure.

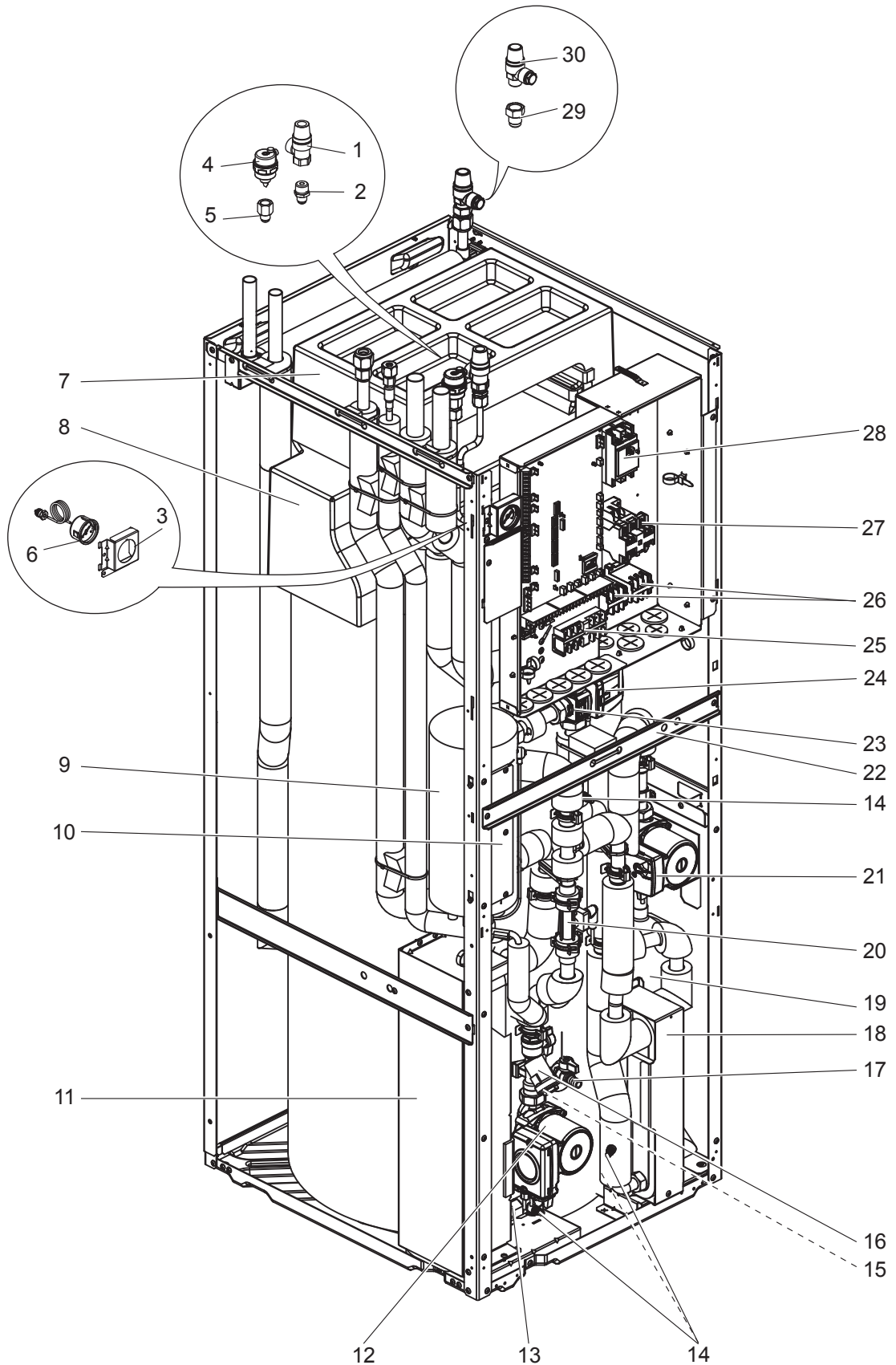
No.	Parts No.	Parts name	EHST20C-VM2EC(R1).UK	EHST20C-VM6EC(R1).UK	EHST20C-VM9EC(R1).UK	EHST20C-MEC(R1).UK	ERST20C-MEC(R1).UK	Wiring diagram symbol	Remarks [Drawing No.]
1	S70 C21 404	PRESSURE RELIEF VALVE	1	1	1	1	1		3 bar/ 6 years
2	S70 C60 096	FLARE JOINT	1	1	1	1	1		3/8F-R1/2
3	S70 C50 206	MANOMETER STAY	1	1	1	1	1		
4	S70 C17 150	AIR VENT (AUTOMATIC)	1	1	1	1	1		6 years
5	S70 C50 096	FLARE JOINT	1	1	1	1	1		3/8F-G3/8
6	S70 C20 205	MANOMETER	1	1	1	1	1		6 years
7	—	EXPANSION VESSEL CUSHION	1	1	1	1	1		[BK25Y363G02]
8	—	TANK CUSHION TOP	1	1	1	1	1		[BK25Y362G02]
9	S70 C11 441	BOOSTER HEATER	1					BH1	1 ϕ 230 V 2 kW
9	S70 C12 441	BOOSTER HEATER		1				BH1, BH2	1 ϕ 230 V 6 kW
9	S70 C13 441	BOOSTER HEATER			1			BH1, BH2	3 ϕ 400 V 9 kW
9	S70 C15 441	BOOSTER HEATER				1	1		0 kW
10	—	HEATER STAY	1	1	1	1	1		[BK00R873G02]
11	S70 C70 408	WATER COIL ASSY (5HP)	1	1	1	1	1		REFRIGERANT-WATER/ MWA2
12	S70 C06 355	WATER PUMP	1	1	1	1		MP1	FOR PRIMARY CIRCUIT 20,000 hrs (3 years)(*)
12	S70 C09 355	WATER PUMP					1		
13	S70 C20 356	PUMP VALVE	1	1	1	1	1		
14	S70 C10 358	DRAIN COCK/AIR VENT (WATER CAP ASSY 320)	4	4	4	4	4		FOR PRIMARY/SANITARY CIRCUIT 6 years
15	S70 C28 460	STRAINER PACKING	1	1	1	1	1		FOR STRAINER
16	S70 C20 452	STRAINER VALVE	1	1	1	1	1		
17	S70 C15 357	DRAIN COCK	1	1	1	1	1		FOR TANK
18	S70 C80 408	WATER COIL ASSY (W)	1	1	1	1	1		WATER-WATER/ CB18-24H
19	S70 C50 357	SCALE TRAP	1	1	1	1	1		
20	S70 C45 266	FLOW SENSOR (BODY & CABLE)	1	1	1	1	1		
21	S70 C05 355	WATER PUMP	1	1	1	1	1	MP4	FOR SANITARY CIRCUIT
22	—	DIV FRAME H DWG	1	1	1	1	1		[BK00T057G01]
23	S70 C24 406	3WAY VALVE (DIVERTING VALVE)	1	1	1	1	1		
24	S70 C25 762	3WAY VALVE (DIVERTING MOTOR)	1	1	1	1	1	3WV	
25	S70 C20 515	TERMINAL BED	1	1	1	1	1		6P (#250LNE+S123)
26	S70 C39 708	CONTACTOR	1	2	2			BHC1, BHC2	30 A
27	S70 C49 708	CONTACTOR	1	1	1	1	1	BHCP	32 A
28	S70 C20 239	EARTH LEAKAGE BREAKER	1					ECB1	1 ϕ 20 A
28	S70 C60 239	EARTH LEAKAGE BREAKER		1				ECB1	1 ϕ 40 A
28	S70 C70 239	EARTH LEAKAGE BREAKER			1			ECB1	3 ϕ 30 A
29	S70 C70 096	FLARE JOINT	1	1	1	1	1		5/8F-R1/2
30	S70 C30 404	PRESSURE RELIEF VALVE	1	1	1	1	1		FOR SANITARY SIDE/ 10 bar
③1	S70 C23 460	O-RING	12	12	12	12	12		BLACK
③2	S70 C10 465	FASTENER	10	10	10	10	10		FOR QUICK CONNECTION
③3	S70 C01 800	GREASE	10*	10*	10*	10*	10*		100 g / FOR QUICK CONNECTION

Do not reuse the O-ring or strainer packing that was once removed, but be sure to replace with a new one.
 * Apply grease appropriately on the O-ring for the quick connection in the unit.

EHST20C-VM2ECR2.UK
EHST20C-MECR2.UK

EHST20C-VM6ECR2.UK
ERST20C-MECR2.UK

EHST20C-YM9ECR2.UK



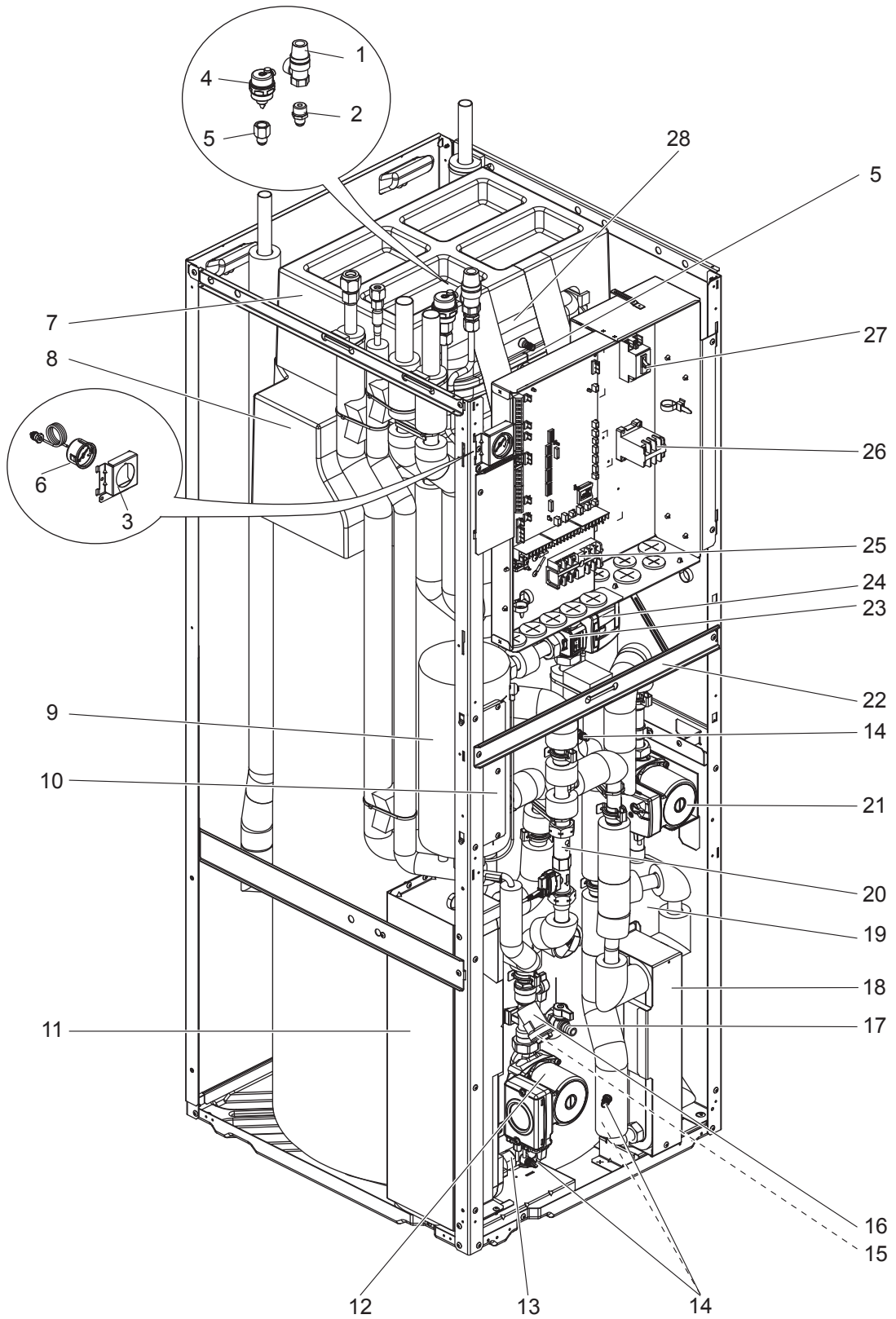
1. The part quantity below indicates the required number of pieces per unit.
2. The circled No. indicates that the part is not shown in the figure.

No.	Parts No.	Parts name	EHST20C-VM2ECR2.UK	EHST20C-VM6ECR2.UK	EHST20C-VM9ECR2.UK	EHST20C-MECCR2.UK	ERST20C-MECCR2.UK	Wiring diagram symbol	Remarks [Drawing No.]
1	S70 C21 404	PRESSURE RELIEF VALVE	1	1	1	1	1		3 bar/ 6 years
2	S70 C60 096	FLARE JOINT	1	1	1	1	1		3/8F-R1/2
3	S70 C70 206	MANOMETER STAY	1	1	1	1	1		
4	S70 C17 150	AIR VENT (AUTOMATIC)	1	1	1	1	1		6 years
5	S70 C50 096	FLARE JOINT	1	1	1	1	1		3/8F-G3/8
6	S70 C20 205	MANOMETER	1	1	1	1	1		6 years
7	—	EXPANSION VESSEL CUSHION	1	1	1	1	1		[BK25Y363G02]
8	—	TANK CUSHION TOP	1	1	1	1	1		[BK25Y362G02]
9	S70 C11 441	BOOSTER HEATER	1					BH1	1 ϕ 230 V 2 kW
9	S70 C12 441	BOOSTER HEATER		1				BH1, BH2	1 ϕ 230 V 6 kW
9	S70 C13 441	BOOSTER HEATER			1			BH1, BH2	3 ϕ 400 V 9 kW
9	S70 C15 441	BOOSTER HEATER				1	1		0 kW
10	—	HEATER STAY	1	1	1	1	1		[BK00R873G02]
11	S70 C70 408	WATER COIL ASSY (5HP)	1	1	1	1	1		MWA2/ REFRIGERANT-WATER
12	S70 C06 355	WATER PUMP	1	1	1	1		MP1	FOR PRIMARY CIRCUIT/ 20,000 hrs (3 years)(*)
12	S70 C09 355	WATER PUMP					1		
13	S70 C20 356	PUMP VALVE	1	1	1	1	1		
14	S70 C10 358	DRAIN COCK/AIR VENT (WATER CAP ASSY 320)	4	4	4	4	4		FOR PRIMARY/SANITARY CIRCUIT 6 years
15	S70 C28 460	STRAINER PACKING	1	1	1	1	1		FOR STRAINER
16	S70 C20 452	STRAINER VALVE	1	1	1	1	1		
17	S70 C15 357	DRAIN COCK	1	1	1	1	1		FOR TANK
18	S70 C80 408	WATER COIL ASSY (W)	1	1	1	1	1		CB18-24H/ WATER-WATER
19	S70 C50 357	SCALE TRAP	1	1	1	1	1		
20	S70 C74 266	FLOW SENSOR (BODY & CABLE)	1	1	1	1	1		
21	S70 C05 355	WATER PUMP	1	1	1	1	1	MP4	FOR SANITARY CIRCUIT
22	—	DIV FRAME H DWG	1	1	1	1	1		[BK02N520G03]
23	S70 C24 406	3WAY VALVE (DIVERTING VALVE)	1	1	1	1	1		
24	S70 C25 762	3WAY VALVE (DIVERTING MOTOR)	1	1	1	1	1	3WV	
25	S70 C20 515	TERMINAL BED	1	1	1	1	1		6P (#250LNE+S123)
26	S70 C39 708	CONTACTOR	1	2	2			BHC1, BHC2	30 A
27	S70 C49 708	CONTACTOR	1	1	1	1	1	BHCP	32 A
28	S70 C20 239	EARTH LEAKAGE BREAKER	1					ECB1	1 ϕ 20 A
28	S70 C60 239	EARTH LEAKAGE BREAKER		1				ECB1	1 ϕ 40 A
28	S70 C70 239	EARTH LEAKAGE BREAKER			1			ECB1	3 ϕ 30 A
29	S70 C70 096	FLARE JOINT	1	1	1	1	1		5/8F-R1/2
30	S70 C30 404	PRESSURE RELIEF VALVE	1	1	1	1	1		10 bar/ FOR SANITARY SIDE
(31)	S70 C23 460	O-RING	10	10	10	10	10		BLACK
(32)	S70 C26 460	O-RING	2	2	2	2	2		BLACK/ FOR FLOW SENSOR
(33)	S70 C10 465	FASTENER	10	10	10	10	10		FOR QUICK CONNECTION
(34)	S70 C20 465	FASTENER	2	2	2	2	2		FOR FLOW SENSOR
(35)	S70 C01 800	GREASE	12*	12*	12*	12*	12*		100 g / FOR QUICK CONNECTION

Do not reuse the O-ring or strainer packing that was once removed, but be sure to replace with a new one.

* Apply grease appropriately on the O-ring for the quick connection in the unit.

EHST20C-MHCW.UK
EHST20C-MHCWR1.UK



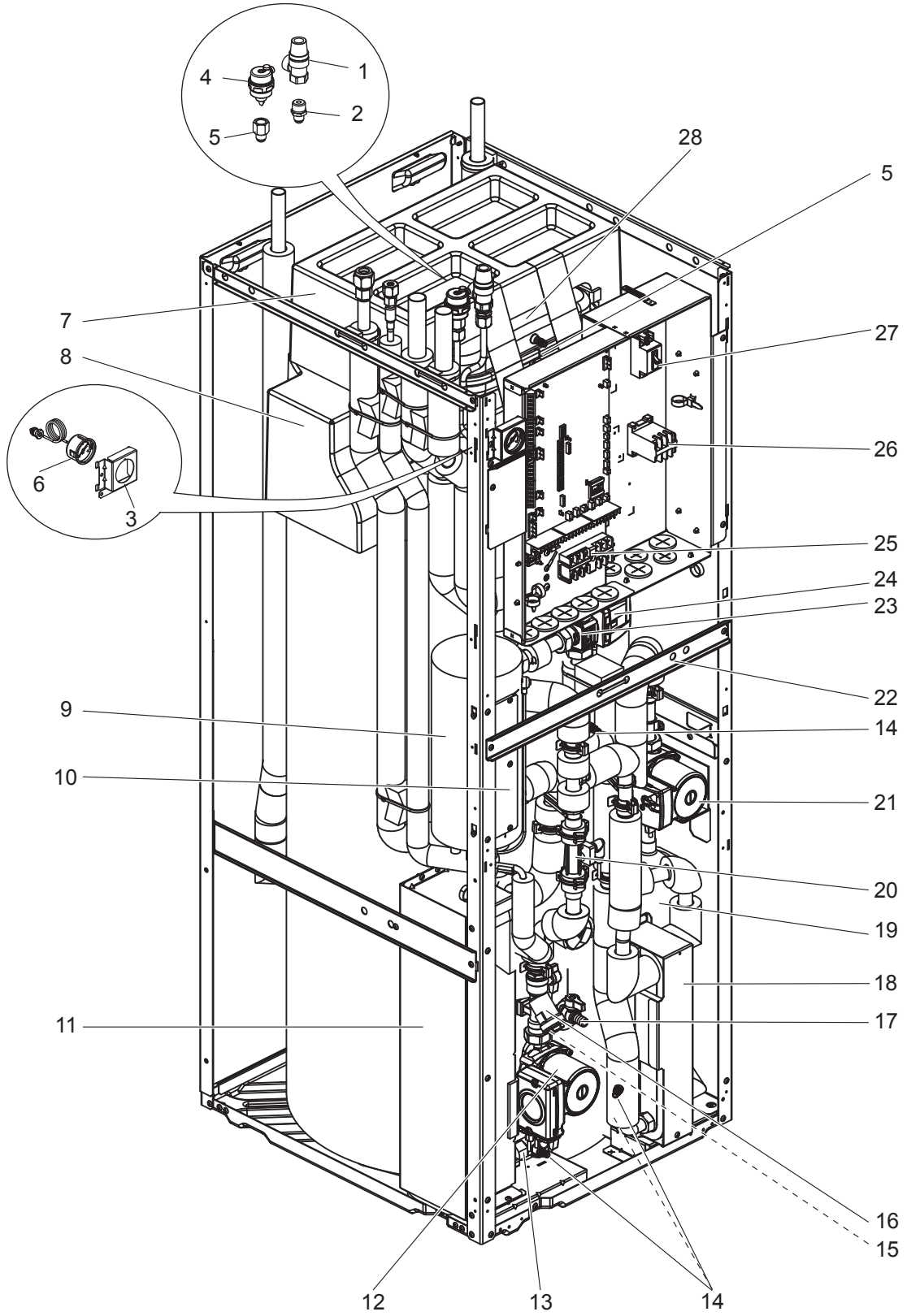
1. The part quantity below indicates the required number of pieces per unit.
2. The circled No. indicates that the part is not shown in the figure.

No.	Parts No.	Parts name	EHST20C-MHCW(R1).UK	Wiring diagram symbol	Remarks [Drawing No.]
1	S 7 0 C 2 1 4 0 4	PRESSURE RELIEF VALVE	1		3 bar/ 6 years
2	S 7 0 C 6 0 0 9 6	FLARE JOINT	1		3/8F-R1/2
3	S 7 0 C 5 0 2 0 6	MANOMETER STAY	1		
4	S 7 0 C 1 7 1 5 0	AIR VENT (AUTOMATIC)	1		6 years
5	S 7 0 C 5 0 0 9 6	FLARE JOINT	2		3/8F-G3/8
6	S 7 0 C 2 0 2 0 5	MANOMETER	1		6 years
7	—	EXPANSION VESSEL CUSHION ASSY	1		[BK00T056G02]
8	—	TANK CUSHION TOP ASSY	1		[BK00T055G03]
9	S 7 0 C 1 5 4 4 1	BOOSTER HEATER	1		0 kW
10	—	HEATER STAY	1		[BK00R873G02]
11	S 7 0 C 7 0 4 0 8	WATER COIL ASSY (5HP)	1		MWA2/ REFRIGERANT-WATER
12	S 7 0 C 0 6 3 5 5	WATER PUMP	1	MP1	FOR PRIMARY CIRCUIT 20,000 hrs (3 years)(*)
13	S 7 0 C 2 0 3 5 6	PUMP VALVE	1		
14	S 7 0 C 1 0 3 5 8	DRAIN COCK/AIR VENT (WATER CAP ASSY 320)	4		FOR PRIMARY/SANITARY CIRCUIT 6 years
15	S 7 0 C 2 8 4 6 0	STRAINER PACKING	1		FOR STRAINER
16	S 7 0 C 2 0 4 5 2	STRAINER VALVE	1		
17	S 7 0 C 1 5 3 5 7	DRAIN COCK	1		FOR TANK
18	S 7 0 C 8 0 4 0 8	WATER COIL ASSY (W)	1		CB18-24H/ WATER-WATER
19	S 7 0 C 5 0 3 5 7	SCALE TRAP	1		
20	S 7 0 C 4 5 2 6 6	FLOW SENSOR (BODY & CABLE)	1		
21	S 7 0 C 0 5 3 5 5	WATER PUMP	1	MP4	FOR SANITARY CIRCUIT
22	—	DIV FRAME H DWG	1		[BK00T057G01]
23	S 7 0 C 2 4 4 0 6	3WAY VALVE (DIVERTING VALVE)	1		
24	S 7 0 C 2 5 7 6 2	3WAY VALVE (DIVERTING MOTOR)	1	3WV	
25	S 7 0 C 2 0 5 1 5	TERMINAL BED	1		6P (#250LNE+S123)
26	S 7 0 C 3 9 7 0 8	CONTACTOR	1	IHC	30 A
27	S 7 0 C 2 0 2 3 9	EARTH LEAKAGE BREAKER	1	ECB2	1 ϕ 20 A
28	S 7 0 C 1 5 4 0 2	EXPANSION VESSEL	1		12 L
29	S 7 0 C 2 7 4 6 0	O-RING	3		ORANGE/ FOR SANITARY SIDE
30	S 7 0 C 2 3 4 6 0	O-RING	10		BLACK
31	S 7 0 C 1 0 4 6 5	FASTENER	11		FOR QUICK CONNECTION
32	S 7 0 C 0 1 8 0 0	GREASE	11 *		100 g / FOR QUICK CONNECTION

Do not reuse the O-ring or strainer packing that was once removed, but be sure to replace with a new one.

* Apply grease appropriately on the O-ring for the quick connection in the unit.

EHST20C-MHCWR2.UK



1. The part quantity below indicates the required number of pieces per unit.
2. The circled No. indicates that the part is not shown in the figure.

No.	Parts No.	Parts name	EHST20C-MHCWR2.UK	Wiring diagram symbol	Remarks [Drawing No.]
1	S 7 0 C 2 1 4 0 4	PRESSURE RELIEF VALVE	1		3 bar/ 6 years
2	S 7 0 C 6 0 0 9 6	FLARE JOINT	1		3/8F-R1/2
3	S 7 0 C 7 0 2 0 6	MANOMETER STAY	1		
4	S 7 0 C 1 7 1 5 0	AIR VENT (AUTOMATIC)	1		6 years
5	S 7 0 C 5 0 0 9 6	FLARE JOINT	2		3/8F-G3/8
6	S 7 0 C 2 0 2 0 5	MANOMETER	1		6 years
7	—	EXPANSION VESSEL CUSHION ASSY	1		[BK00T056G02]
8	—	TANK CUSHION TOP ASSY	1		[BK00T055G03]
9	S 7 0 C 1 5 4 4 1	BOOSTER HEATER	1		0 kW
10	—	HEATER STAY	1		[BK00R873G02]
11	S 7 0 C 7 0 4 0 8	WATER COIL ASSY (5HP)	1		MWA2/ REFRIGERANT-WATER
12	S 7 0 C 0 6 3 5 5	WATER PUMP	1	MP1	FOR PRIMARY CIRCUIT 20,000 hrs (3 years)(*)
13	S 7 0 C 2 0 3 5 6	PUMP VALVE	1		
14	S 7 0 C 1 0 3 5 8	DRAIN COCK/AIR VENT (WATER CAP ASSY 320)	4		FOR PRIMARY/SANITARY CIRCUIT 6 years
15	S 7 0 C 2 8 4 6 0	STRAINER PACKING	1		FOR STRAINER
16	S 7 0 C 2 0 4 5 2	STRAINER VALVE	1		
17	S 7 0 C 1 5 3 5 7	DRAIN COCK	1		FOR TANK
18	S 7 0 C 8 0 4 0 8	WATER COIL ASSY (W)	1		CB18-24H/ WATER-WATER
19	S 7 0 C 5 0 3 5 7	SCALE TRAP	1		
20	S 7 0 C 7 4 2 6 6	FLOW SENSOR (BODY & CABLE)	1		
21	S 7 0 C 0 5 3 5 5	WATER PUMP	1	MP4	FOR SANITARY CIRCUIT
22	—	DIV FRAME H DWG	1		[BK02N520G03]
23	S 7 0 C 2 4 4 0 6	3WAY VALVE (DIVERTING VALVE)	1		
24	S 7 0 C 2 5 7 6 2	3WAY VALVE (DIVERTING MOTOR)	1	3WV	
25	S 7 0 C 2 0 5 1 5	TERMINAL BED	1		6P (#250LNE+S123)
26	S 7 0 C 3 9 7 0 8	CONTACTOR	1	IHC	30 A
27	S 7 0 C 2 0 2 3 9	EARTH LEAKAGE BREAKER	1	ECB2	1 ϕ 20 A
28	S 7 0 C 1 5 4 0 2	EXPANSION VESSEL	1		12 L
29	S 7 0 C 2 7 4 6 0	O-RING	3		ORANGE/ FOR SANITARY SIDE
30	S 7 0 C 2 3 4 6 0	O-RING	8		BLACK
31	S 7 0 C 2 6 4 6 0	O-RING	2		BLACK/ FOR FLOW SENSOR
32	S 7 0 C 1 0 4 6 5	FASTENER	11		FOR QUICK CONNECTION
33	S 7 0 C 2 0 4 6 5	FASTENER	2		FOR FLOW SENSOR
34	S 7 0 C 0 1 8 0 0	GREASE	13 *		100 g / FOR QUICK CONNECTION

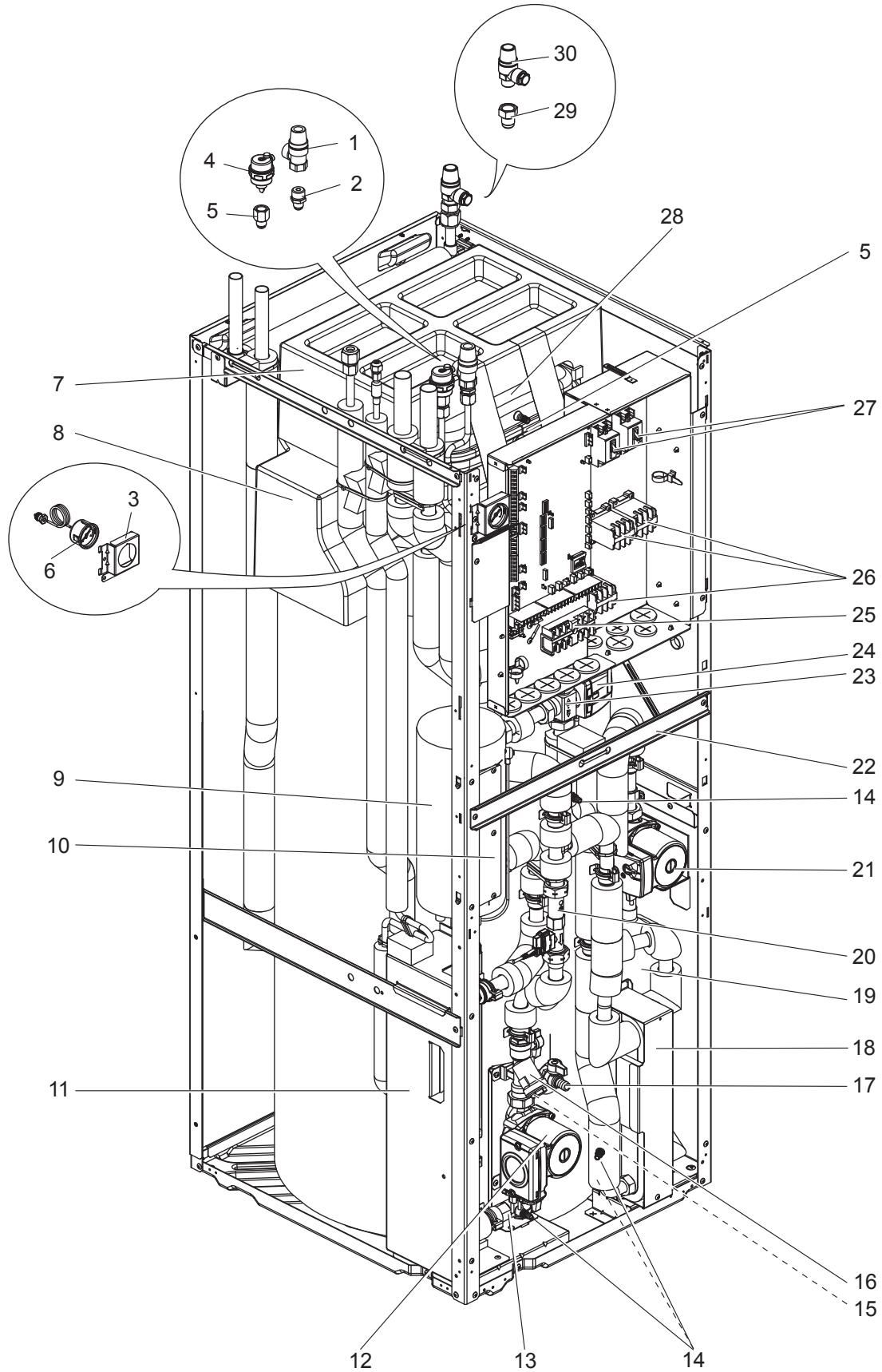
Do not reuse the O-ring or strainer packing that was once removed, but be sure to replace with a new one.

* Apply grease appropriately on the O-ring for the quick connection in the unit.

EHST20D-VM2C.UK
EHST20D-VM2CR1.UK
ERST20D-VM2C.UK
ERST20D-VM2CR1.UK

EHST20D-MHC.UK
EHST20D-MHCR1.UK

EHST20D-YM9C.UK
EHST20D-YM9CR1.UK



1. The part quantity below indicates the required number of pieces per unit.
2. The circled No. indicates that the part is not shown in the figure.

No.	Parts No.	Parts name	EHST20D-VM2C(R1),UK	EHST20D-MHC(R1),UK	EHST20D-YM9C(R1),UK	ERST20D-VM2C(R1),UK	Wiring diagram symbol	Remarks [Drawing No.]
1	S70 C21 404	PRESSURE RELIEF VALVE	1	1	1	1		3bar/ 6 years
2	S70 C60 096	FLARE JOINT	1	1	1	1		3/8F-R1/2
3	S70 C50 206	MANOMETER STAY	1	1	1	1		
4	S70 C17 150	AIR VENT (AUTOMATIC)	1	1	1	1		6 years
5	S70 C50 096	FLARE JOINT	2	2	2	2		3/8F-G3/8
6	S70 C20 205	MANOMETER	1	1	1	1		6 years
7	—	EXPANSION VESSEL CUSHION ASSY	1	1	1	1		[BK00T056G02]
8	—	TANK CUSHION TOP ASSY	1	1	1	1		[BK00T055G03]
9	S70 C11 441	BOOSTER HEATER	1			1	BH1	1 ϕ 230 V 2 kW
9	S70 C15 441	BOOSTER HEATER		1				0 kW
9	S70 C13 441	BOOSTER HEATER			1		BH1, BH2	3 ϕ 400 V 9 kW
10	—	HEATER STAY	1	1	1	1		[BK00R873G02]
11	S70 C60 408	WATER COIL ASSY (2HP)	1	1	1	1		MWA1/ REFRIGERANT-WATER
12	S70 C06 355	WATER PUMP	1	1	1		MP1	FOR PRIMARY CIRCUIT 20,000 hrs (3 years)(*)
12	S70 C09 355	WATER PUMP				1		
13	S70 C20 356	PUMP VALVE	1	1	1	1		
14	S70 C10 358	DRAIN COCK/AIR VENT (WATER CAP ASSY 320)	4	4	4	4		FOR PRIMARY/SANITARY CIRCUIT 6 years
15	S70 C28 460	STRAINER PACKING	1	1	1	1		FOR STRAINER
16	S70 C20 452	STRAINER VALVE	1	1	1	1		
17	S70 C15 357	DRAIN COCK	1	1	1	1		FOR TANK
18	S70 C80 408	WATER COIL ASSY (W)	1	1	1	1		CB18-24H/ WATER-WATER
19	S70 C50 357	SCALE TRAP	1	1	1	1		
20	S70 C45 266	FLOW SENSOR (BODY & CABLE)	1	1	1	1		
21	S70 C05 355	WATER PUMP	1	1	1	1	MP4	FOR SANITARY CIRCUIT
22	—	DIV FRAME H DWG	1	1	1	1		[BK00T057G01]
23	S70 C24 406	3WAY VALVE (DIVERTING VALVE)	1	1	1	1		
24	S70 C25 762	3WAY VALVE (DIVERTING MOTOR)	1	1	1	1	3WV	
25	S70 C20 515	TERMINAL BED	1	1	1	1		6P (#250LNE+S123)
26	S70 C39 708	CONTACTOR	1	1	2	1	BHC1, IHC	30 A
26	S70 C49 708	CONTACTOR	1		1	1	BHCP	32 A
27	S70 C20 239	EARTH LEAKAGE BREAKER	1	1		1	ECB1, ECB2	1 ϕ 20 A
27	S70 C70 239	EARTH LEAKAGE BREAKER			1		ECB1	3 ϕ 30 A
28	S70 C15 402	EXPANSION VESSEL	1	1	1	1		12 L
29	S70 C70 096	FLARE JOINT	1	1	1	1		5/8F-R1/2
30	S70 C30 404	PRESSURE RELIEF VALVE	1	1	1	1		10 bar / FOR SANITARY SIDE
31	S70 C23 460	O-RING	15	15	15	15		BLACK
32	S70 C10 465	FASTENER	13	13	13	13		FOR QUICK CONNECTION
33	S70 C01 800	GREASE	13*	13*	13*	13*		100 g / FOR QUICK CONNECTION

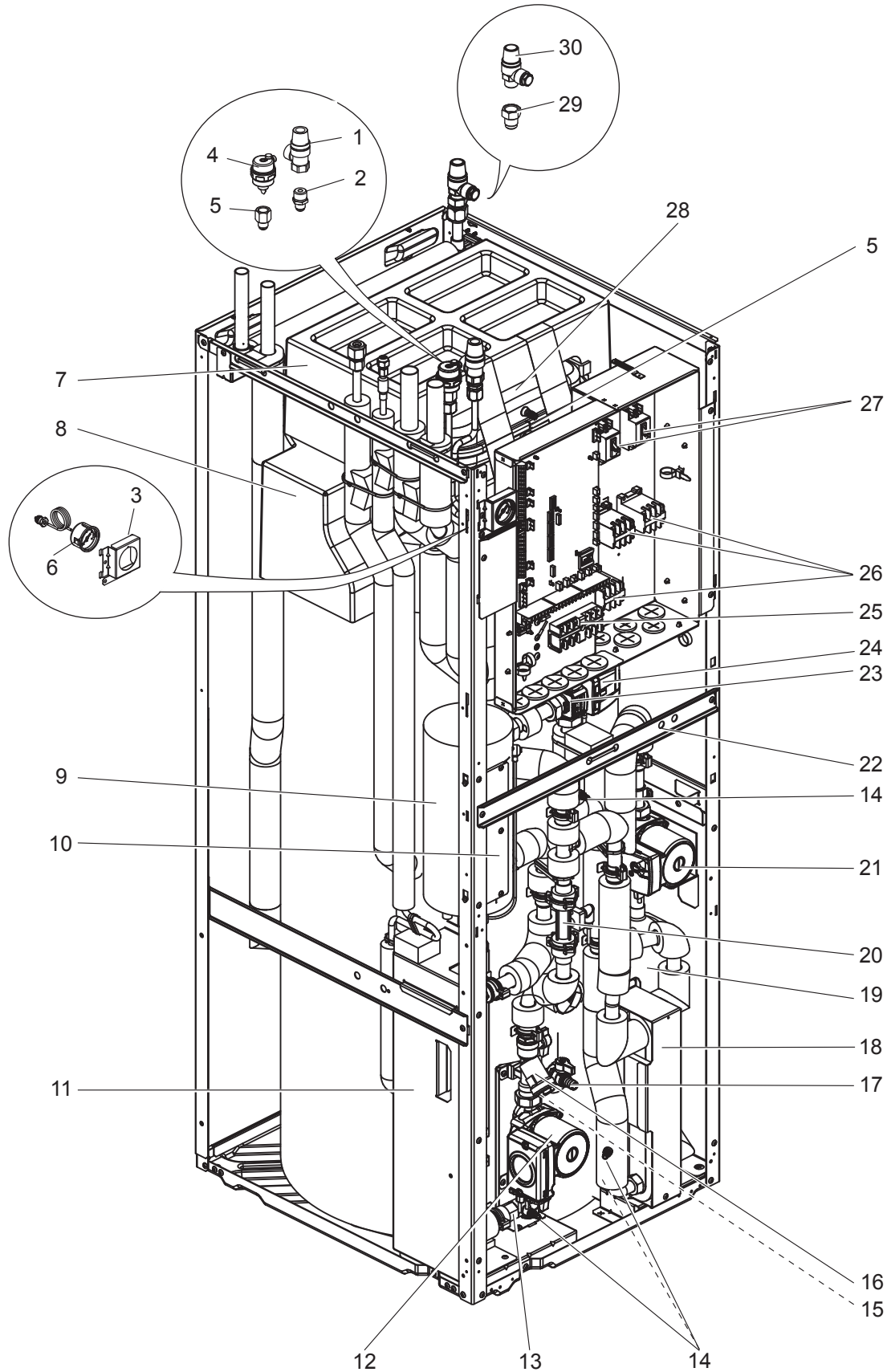
Do not reuse the O-ring or strainer packing that was once removed, but be sure to replace with a new one.

* Apply grease appropriately on the O-ring for the quick connection in the unit.

EHST20D-VM2CR2.UK
ERST20D-VM2CR2.UK

EHST20D-MHCR2.UK
EHST20D-VM2C2R2.UK

EHST20D-YM9CR2.UK
ERST20D-VM2C2R2.UK



1. The part quantity below indicates the required number of pieces per unit.
2. The circled No. indicates that the part is not shown in the figure.

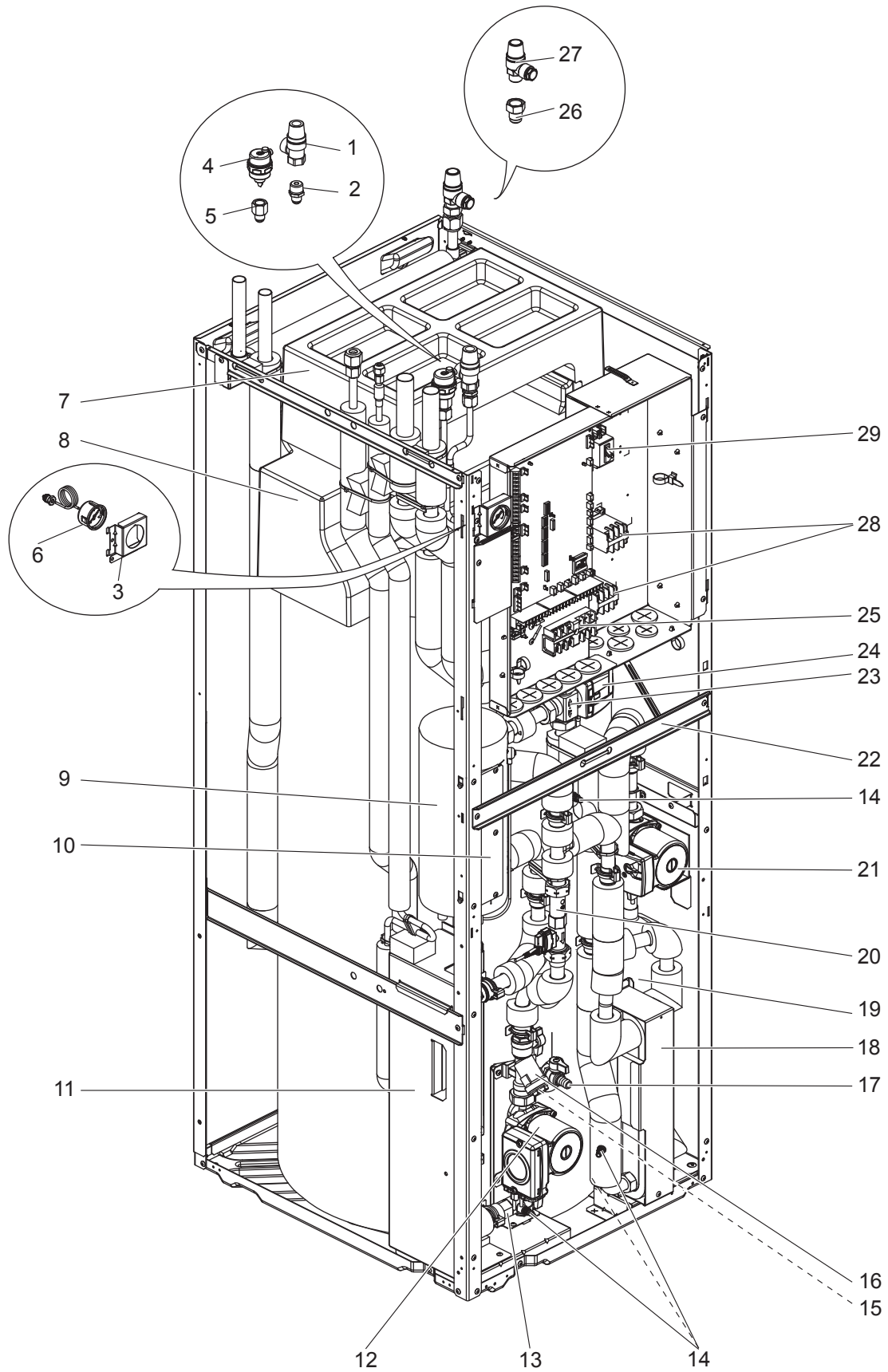
No.	Parts No.	Parts name					Wiring diagram symbol	Remarks [Drawing No.]
			EHST20D-VM2C(2)R2.UK	EHST20D-MHCR2.UK	EHST20D-YM9CR2.UK	ERST20D-VM2C(2)R2.UK		
1	S70 C21 404	PRESSURE RELIEF VALVE	1	1	1	1		3 bar/ 6 years
2	S70 C60 096	FLARE JOINT	1	1	1	1		3/8F-R1/2
3	S70 C70 206	MANOMETER STAY	1	1	1	1		
4	S70 C17 150	AIR VENT (AUTOMATIC)	1	1	1	1		6 years
5	S70 C50 096	FLARE JOINT	2	2	2	2		3/8F-G3/8
6	S70 C20 205	MANOMETER	1	1	1	1		6 years
7	—	EXPANSION VESSEL CUSHION ASSY	1	1	1	1		[BK00T056G02]
8	—	TANK CUSHION TOP ASSY	1	1	1	1		[BK00T055G03]
9	S70 C11 441	BOOSTER HEATER	1			1	BH1	1 ϕ 230 V 2 kW
9	S70 C15 441	BOOSTER HEATER		1				0 kW
9	S70 C13 441	BOOSTER HEATER			1		BH1, BH2	3 ϕ 400 V 9 kW
10	—	HEATER STAY	1	1	1	1		[BK00R873G02]
11	S70 C60 408	WATER COIL ASSY (2HP)	1	1	1	1		MWA1/ REFRIGERANT-WATER
12	S70 C06 355	WATER PUMP	1	1	1		MP1	FOR PRIMARY CIRCUIT 20,000 hrs (3 years)(*)
12	S70 C09 355	WATER PUMP				1		
13	S70 C20 356	PUMP VALVE	1	1	1	1		
14	S70 C10 358	DRAIN COCK/AIR VENT (WATER CAP ASSY 320)	4	4	4	4		FOR PRIMARY/SANITARY CIRCUIT 6 years
15	S70 C28 460	STRAINER PACKING	1	1	1	1		FOR STRAINER
16	S70 C20 452	STRAINER VALVE	1	1	1	1		
17	S70 C15 357	DRAIN COCK	1	1	1	1		FOR TANK
18	S70 C80 408	WATER COIL ASSY (W)	1	1	1	1		CB18-24H/ WATER-WATER
19	S70 C50 357	SCALE TRAP	1	1	1	1		
20	S70 C74 266	FLOW SENSOR (BODY & CABLE)	1	1	1	1		
21	S70 C05 355	WATER PUMP	1	1	1	1	MP4	FOR SANITARY CIRCUIT
22	—	DIV FRAME H DWG	1	1	1	1		[BK02N520G03]
23	S70 C24 406	3WAY VALVE (DIVERTING VALVE)	1	1	1	1		
24	S70 C25 762	3WAY VALVE (DIVERTING MOTOR)	1	1	1	1	3WV	
25	S70 C20 515	TERMINAL BED	1	1	1	1		6P (#250LNE+S123)
26	S70 C39 708	CONTACTOR	1	1	2	1	BHC1, IHC	30 A
26	S70 C49 708	CONTACTOR	1		1	1	BHCP	32 A
27	S70 C20 239	EARTH LEAKAGE BREAKER	1	1		1	ECB1, ECB2	1 ϕ 20 A
27	S70 C70 239	EARTH LEAKAGE BREAKER			1		ECB1	3 ϕ 30 A
28	S70 C15 402	EXPANSION VESSEL	1	1	1	1		12 L
29	S70 C70 096	FLARE JOINT	1	1	1	1		5/8F-R1/2
30	S70 C30 404	PRESSURE RELIEF VALVE	1	1	1	1		10 bar/ FOR SANITARY SIDE
31	S70 C23 460	O-RING	13	13	13	13		BLACK
32	S70 C26 460	O-RING	2	2	2	2		BLACK/ FOR FLOW SENSOR
33	S70 C10 465	FASTENER	13	13	13	13		FOR QUICK CONNECTION
34	S70 C20 465	FASTENER	2	2	2	2		FOR FLOW SENSOR
35	S70 C01 800	GREASE	15*	15*	15*	15*		100 g/ FOR QUICK CONNECTION

Do not reuse the O-ring or strainer packing that was once removed, but be sure to replace with a new one.
 * Apply grease appropriately on the O-ring for the quick connection in the unit.

EHST20D-VM2EC.UK
EHST20D-VM2ECR1.UK

EHST20D-MEC.UK
EHST20D-MECR1.UK

ERST20D-MEC.UK
ERST20D-MECR1.UK



1. The part quantity below indicates the required number of pieces per unit.
 2. The circled No. indicates that the part is not shown in the figure.

No.	Parts No.	Parts name	EHST20D-VM2EC(R1).UK	EHST20D-MEC(R1).UK	ERST20D-MEC(R1).UK	Wiring diagram symbol	Remarks [Drawing No.]
1	S70 C21 404	PRESSURE RELIEF VALVE	1	1	1		3 bar/ 6 years
2	S70 C60 096	FLARE JOINT	1	1	1		3/8F-R1/2
3	S70 C50 206	MANOMETER STAY	1	1	1		
4	S70 C17 150	AIR VENT (AUTOMATIC)	1	1	1		6 years
5	S70 C50 096	FLARE JOINT	1	1	1		3/8F-G3/8
6	S70 C20 205	MANOMETER	1	1	1		6 years
7	—	EXPANSION VESSEL CUSHION	1	1	1		[BK25Y363G02]
8	—	TANK CUSHION TOP	1	1	1		[BK25Y362G02]
9	S70 C15 441	BOOSTER HEATER		1	1		0 kW
9	S70 C11 441	BOOSTER HEATER	1			BH1	1 ϕ 230 V 2 kW
10	—	HEATER STAY	1	1	1		[BK00R873G02]
11	S70 C60 408	WATER COIL ASSY (2HP)	1	1	1		MWA1/ REFRIGERANT-WATER
12	S70 C06 355	WATER PUMP	1	1		MP1	FOR PRIMARY CIRCUIT 20,000 hrs (3 years)(*)
12	S70 C09 355	WATER PUMP			1		
13	S70 C20 356	PUMP VALVE	1	1	1		
14	S70 C10 358	DRAIN COCK/AIR VENT (WATER CAP ASSY 320)	4	4	4		FOR PRIMARY/SANITARY CIRCUIT 6 years
15	S70 C28 460	STRAINER PACKING	1	1	1		FOR STRAINER
16	S70 C20 452	STRAINER VALVE	1	1	1		
17	S70 C15 357	DRAIN COCK	1	1	1		FOR TANK
18	S70 C80 408	WATER COIL ASSY (W)	1	1	1		CB18-24H/ WATER-WATER
19	S70 C50 357	SCALE TRAP	1	1	1		
20	S70 C45 266	FLOW SENSOR (BODY & CABLE)	1	1	1		
21	S70 C05 355	WATER PUMP	1	1	1	MP4	FOR SANITARY CIRCUIT
22	—	DIV FRAME H DWG	1	1	1		[BK00T057G01]
23	S70 C24 406	3WAY VALVE (DIVERTING VALVE)	1	1	1		
24	S70 C25 762	3WAY VALVE (DIVERTING MOTOR)	1	1	1	3WV	
25	S70 C20 515	TERMINAL BED	1	1	1		6P (#250LNE+S123)
26	S70 C70 096	FLARE JOINT	1	1	1		5/8F-R1/2
27	S70 C30 404	PRESSURE RELIEF VALVE	1	1	1		10 bar/ FOR SANITARY SIDE
28	S70 C39 708	CONTACTOR	1			BHC1	30 A
28	S70 C49 708	CONTACTOR	1			BHCP	32 A
29	S70 C20 239	EARTH LEAKAGE BREAKER	1			ECB1	1 ϕ 20 A
30	S70 C23 460	O-RING	15	15	15		BLACK
31	S70 C10 465	FASTENER	13	13	13		FOR QUICK CONNECTION
32	S70 C01 800	GREASE	13*	13*	13*		100 g/ FOR QUICK CONNECTION

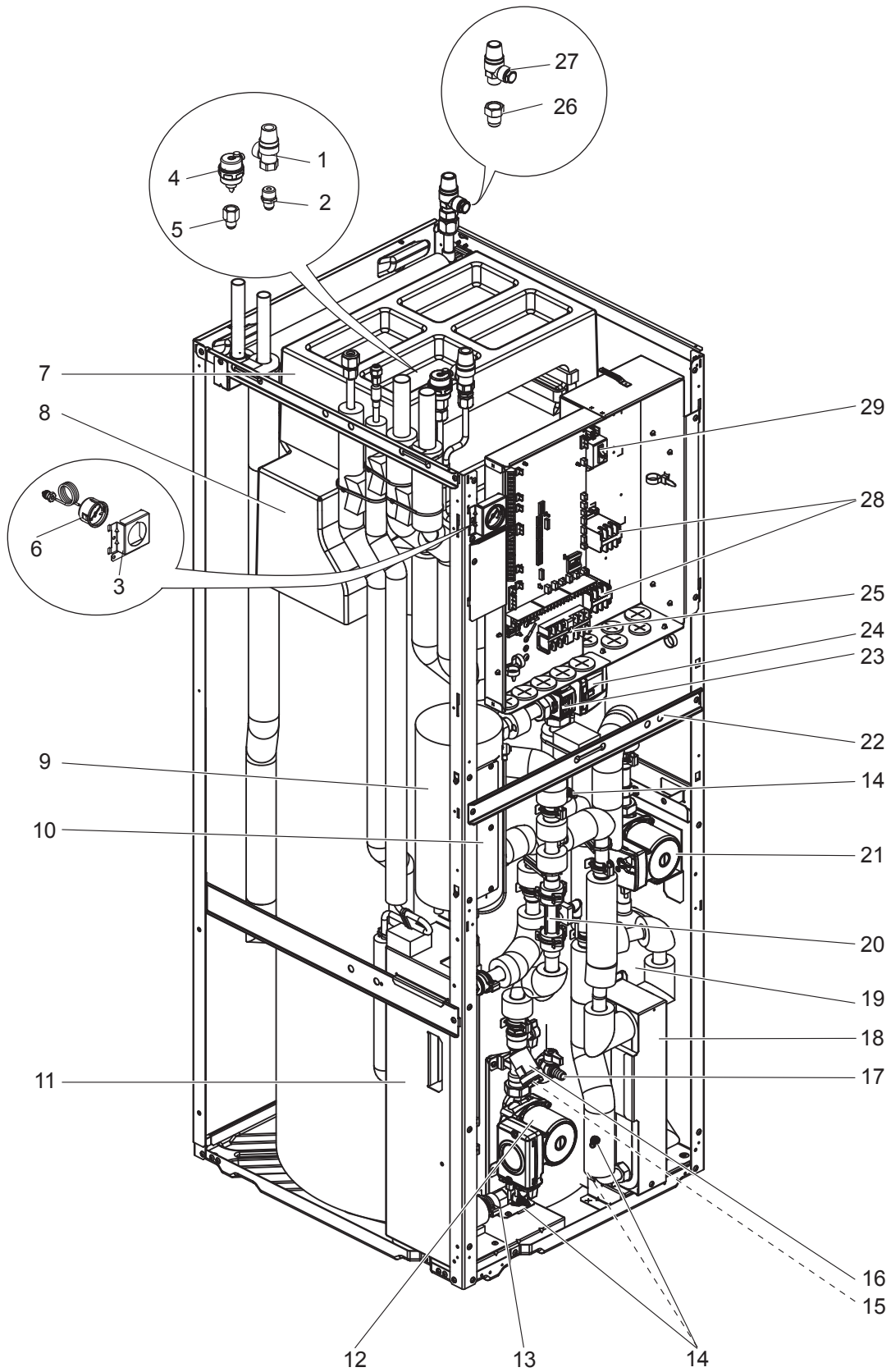
Do not reuse the O-ring or strainer packing that was once removed, but be sure to replace with a new one.

* Apply grease appropriately on the O-ring for the quick connection in the unit.

EHST20D-VM2ECR2.UK

EHST20D-MECR2.UK

ERST20D-MECR2.UK



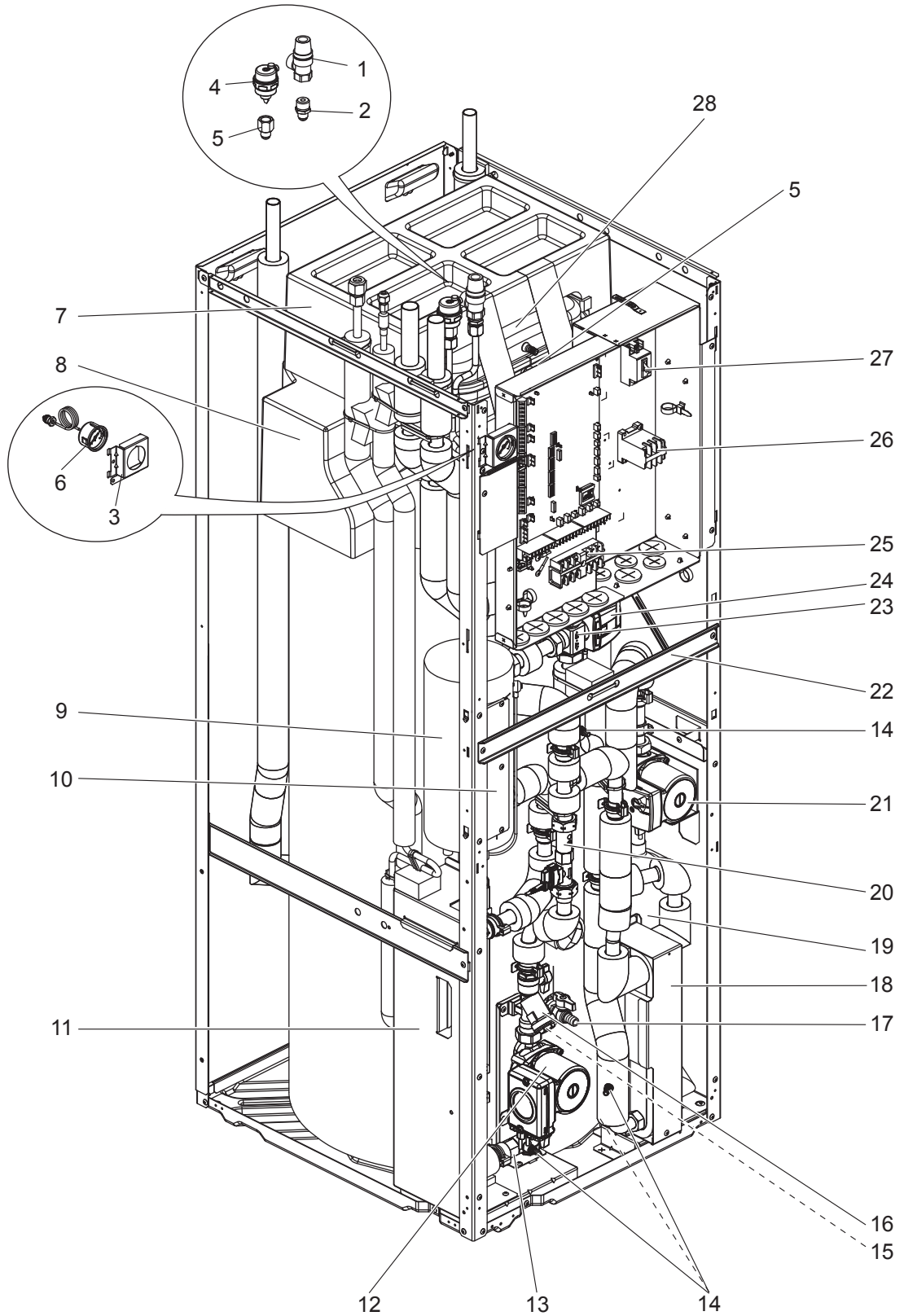
1. The part quantity below indicates the required number of pieces per unit.
2. The circled No. indicates that the part is not shown in the figure.

No.	Parts No.	Parts name	EHST20D-VM2ECR2.UK	EHST20D-MECCR2.UK	ERST20D-MECCR2.UK	Wiring diagram symbol	Remarks [Drawing No.]
1	S70 C21 404	PRESSURE RELIEF VALVE	1	1	1		3 bar/ 6 years
2	S70 C60 096	FLARE JOINT	1	1	1		3/8F-R1/2
3	S70 C70 206	MANOMETER STAY	1	1	1		
4	S70 C17 150	AIR VENT (AUTOMATIC)	1	1	1		6 years
5	S70 C50 096	FLARE JOINT	1	1	1		3/8F-G3/8
6	S70 C20 205	MANOMETER	1	1	1		6 years
7	—	EXPANSION VESSEL CUSHION	1	1	1		[BK25Y363G02]
8	—	TANK CUSHION TOP	1	1	1		[BK25Y362G02]
9	S70 C15 441	BOOSTER HEATER		1	1		0 kW
9	S70 C11 441	BOOSTER HEATER	1			BH1	1 ϕ 230 V 2 kW
10	—	HEATER STAY	1	1	1		[BK00R873G02]
11	S70 C60 408	WATER COIL ASSY (2HP)	1	1	1		MWA1/ REFRIGERANT-WATER
12	S70 C06 355	WATER PUMP	1	1		MP1	FOR PRIMARY CIRCUIT 20,000 hrs (3 years)(*)
	S70 C09 355	WATER PUMP			1		
13	S70 C20 356	PUMP VALVE	1	1	1		
14	S70 C10 358	DRAIN COCK/AIR VENT (WATER CAP ASSY 320)	4	4	4		FOR PRIMARY/SANITARY CIRCUIT 6 years
15	S70 C28 460	STRAINER PACKING	1	1	1		FOR STRAINER
16	S70 C20 452	STRAINER VALVE	1	1	1		
17	S70 C15 357	DRAIN COCK	1	1	1		FOR TANK
18	S70 C80 408	WATER COIL ASSY (W)	1	1	1		CB18-24H/ WATER-WATER
19	S70 C50 357	SCALE TRAP	1	1	1		
20	S70 C74 266	FLOW SENSOR (BODY & CABLE)	1	1	1		
21	S70 C05 355	WATER PUMP	1	1	1	MP4	FOR SANITARY CIRCUIT
22	—	DIV FRAME H DWG	1	1	1		[BK02N520G03]
23	S70 C24 406	3WAY VALVE (DIVERTING VALVE)	1	1	1		
24	S70 C25 762	3WAY VALVE (DIVERTING MOTOR)	1	1	1	3WV	
25	S70 C20 515	TERMINAL BED	1	1	1		6P (#250LNE+S123)
26	S70 C70 096	FLARE JOINT	1	1	1		5/8F-R1/2
27	S70 C30 404	PRESSURE RELIEF VALVE	1	1	1		10bar/ FOR SANITARY SIDE
28	S70 C39 708	CONTACTOR	1			BHC1	30 A
28	S70 C49 708	CONTACTOR	1			BHCP	32 A
29	S70 C20 239	EARTH LEAKAGE BREAKER	1			ECB1	1 ϕ 20 A
30	S70 C23 460	O-RING	13	13	13		BLACK
31	S70 C26 460	O-RING	2	2	2		BLACK/ FOR FLOW SENSOR
32	S70 C10 465	FASTENER	13	13	13		FOR QUICK CONNECTION
33	S70 C20 465	FASTENER	2	2	2		FOR FLOW SENSOR
34	S70 C01 800	GREASE	15*	15*	15*		100 g/ FOR QUICK CONNECTION

Do not reuse the O-ring or strainer packing that was once removed, but be sure to replace with a new one.

* Apply grease appropriately on the O-ring for the quick connection in the unit.

EHST20D-MHCW.UK
EHST20D-MHCWR1.UK

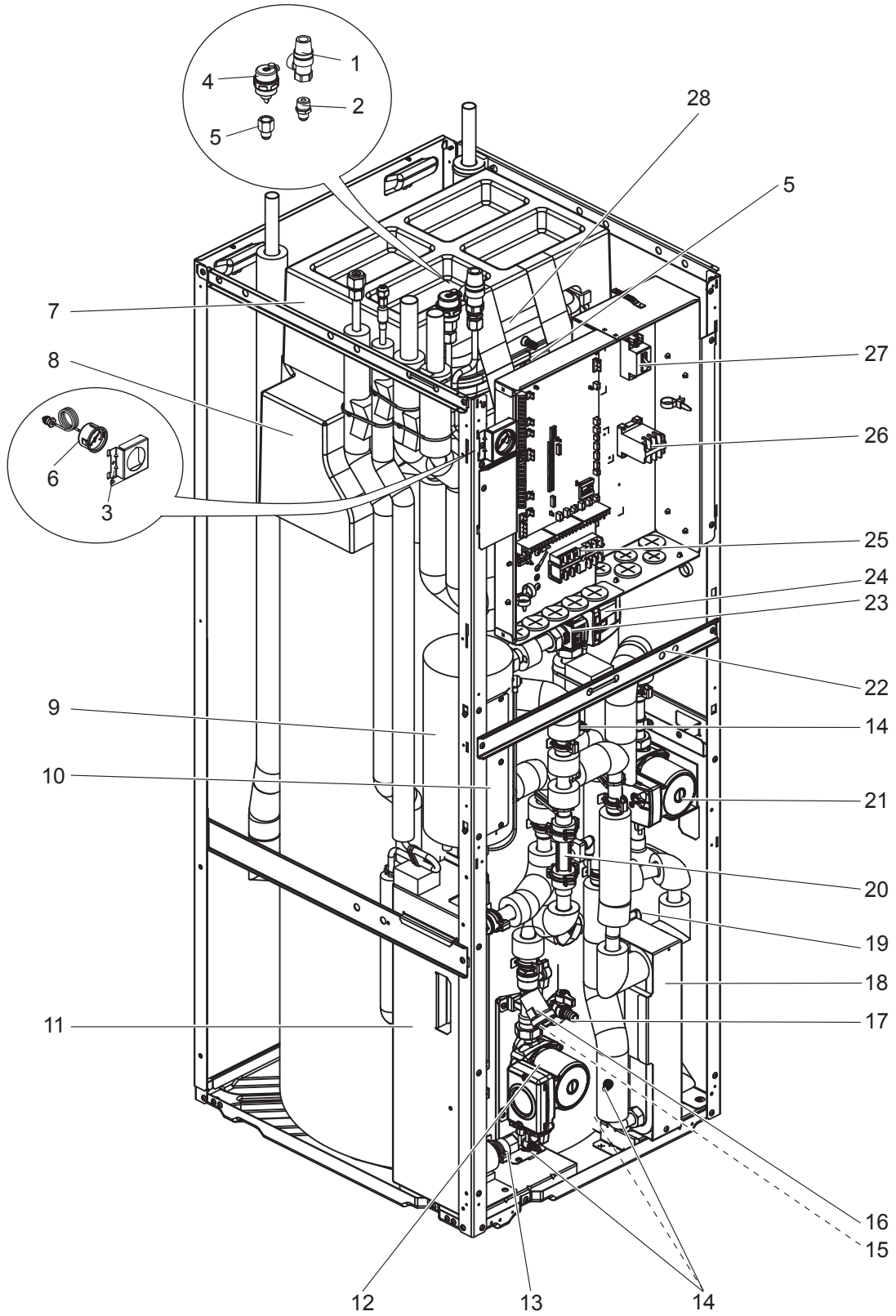


1. The part quantity below indicates the required number of pieces per unit.
2. The circled No. indicates that the part is not shown in the figure.

No.	Parts No.	Parts name	EHST20D-MHCW(R1).UK	Wiring diagram symbol	Remarks [Drawing No.]
1	S 7 0 C 2 1 4 0 4	PRESSURE RELIEF VALVE	1		3 bar/ 6 years
2	S 7 0 C 6 0 0 9 6	FLARE JOINT	1		3/8F-R1/2
3	S 7 0 C 5 0 2 0 6	MANOMETER STAY	1		
4	S 7 0 C 1 7 1 5 0	AIR VENT (AUTOMATIC)	1		6 years
5	S 7 0 C 5 0 0 9 6	FLARE JOINT	2		3/8F-G3/8
6	S 7 0 C 2 0 2 0 5	MANOMETER	1		6 years
7	—	EXPANSION VESSEL CUSHION ASSY	1		[BK00T056G02]
8	—	TANK CUSHION TOP ASSY	1		[BK00T055G03]
9	S 7 0 C 1 5 4 4 1	BOOSTER HEATER	1		0 kW
10	—	HEATER STAY	1		[BK00R873G02]
11	S 7 0 C 6 0 4 0 8	WATER COIL ASSY (2HP)	1		MWA1/ REFRIGERANT-WATER
12	S 7 0 C 0 6 3 5 5	WATER PUMP	1	MP1	FOR PRIMARY CIRCUIT 20,000 hrs (3 years)(*)
13	S 7 0 C 2 0 3 5 6	PUMP VALVE	1		
14	S 7 0 C 1 0 3 5 8	DRAIN COCK/AIR VENT (WATER CAP ASSY 320)	4		FOR PRIMARY/SANITARY CIRCUIT 6 years
15	S 7 0 C 2 8 4 6 0	STRAINER PACKING	1		FOR STRAINER
16	S 7 0 C 2 0 4 5 2	STRAINER VALVE	1		
17	S 7 0 C 1 5 3 5 7	DRAIN COCK	1		FOR TANK
18	S 7 0 C 8 0 4 0 8	WATER COIL ASSY (W)	1		CB18-24H/ WATER-WATER
19	S 7 0 C 5 0 3 5 7	SCALE TRAP	1		
20	S 7 0 C 4 5 2 6 6	FLOW SENSOR (BODY & CABLE)	1		
21	S 7 0 C 0 5 3 5 5	WATER PUMP	1	MP4	FOR SANITARY CIRCUIT
22	—	DIV FRAME H DWG	1		[BK00T057G01]
23	S 7 0 C 2 4 4 0 6	3WAY VALVE (DIVERTING VALVE)	1		
24	S 7 0 C 2 5 7 6 2	3WAY VALVE (DIVERTING MOTOR)	1	3WV	
25	S 7 0 C 2 0 5 1 5	TERMINAL BED	1		6P (#250LNE+S123)
26	S 7 0 C 3 9 7 0 8	CONTACTOR	1	IHC	30 A
27	S 7 0 C 2 0 2 3 9	EARTH LEAKAGE BREAKER	1	ECB2	1 ϕ 20 A
28	S 7 0 C 1 5 4 0 2	EXPANSION VESSEL	1		12 L
29	S 7 0 C 2 7 4 6 0	O-RING	3		ORANGE/ FOR SANITARY SIDE
30	S 7 0 C 2 3 4 6 0	O-RING	13		BLACK
31	S 7 0 C 1 0 4 6 5	FASTENER	14		FOR QUICK CONNECTION
32	S 7 0 C 0 1 8 0 0	GREASE	14 *		100 g/ FOR QUICK CONNECTION

Do not reuse the O-ring or strainer packing that was once removed, but be sure to replace with a new one.
* Apply grease appropriately on the O-ring for the quick connection in the unit.

EHST20D-MHCWR2.UK



1. The part quantity below indicates the required number of pieces per unit.
2. The circled No. indicates that the part is not shown in the figure.

No.	Parts No.	Parts name	EHST20D-MHCWR2.UK	Wiring diagram symbol	Remarks [Drawing No.]
1	S 70 C 21 404	PRESSURE RELIEF VALVE	1		3 bar/ 6 years
2	S 70 C 60 096	FLARE JOINT	1		3/8F-R1/2
3	S 70 C 70 206	MANOMETER STAY	1		
4	S 70 C 17 150	AIR VENT (AUTOMATIC)	1		6 years
5	S 70 C 50 096	FLARE JOINT	2		3/8F-G3/8
6	S 70 C 20 205	MANOMETER	1		6 years
7	—	EXPANSION VESSEL CUSHION ASSY	1		[BK00T056G02]
8	—	TANK CUSHION TOP ASSY	1		[BK00T055G03]
9	S 70 C 15 441	BOOSTER HEATER	1		0 kW
10	—	HEATER STAY	1		[BK00R873G02]
11	S 70 C 60 408	WATER COIL ASSY (2HP)	1		MWA1/ REFRIGERANT-WATER
12	S 70 C 06 355	WATER PUMP	1	MP1	FOR PRIMARY CIRCUIT 20,000 hrs (3 years)(*)
13	S 70 C 20 356	PUMP VALVE	1		
14	S 70 C 10 358	DRAIN COCK/AIR VENT (WATER CAP ASSY 320)	4		FOR PRIMARY/SANITARY CIRCUIT 6 years
15	S 70 C 28 460	STRAINER PACKING	1		FOR STRAINER
16	S 70 C 20 452	STRAINER VALVE	1		
17	S 70 C 15 357	DRAIN COCK	1		FOR TANK
18	S 70 C 80 408	WATER COIL ASSY (W)	1		CB18-24H/ WATER-WATER
19	S 70 C 50 357	SCALE TRAP	1		
20	S 70 C 74 266	FLOW SENSOR (BODY & CABLE)	1		
21	S 70 C 05 355	WATER PUMP	1	MP4	FOR SANITARY CIRCUIT
22	—	DIV FRAME H DWG	1		[BK02N520G03]
23	S 70 C 24 406	3WAY VALVE (DIVERTING VALVE)	1		
24	S 70 C 25 762	3WAY VALVE (DIVERTING MOTOR)	1	3WV	
25	S 70 C 20 515	TERMINAL BED	1		6P (#250LNE+S123)
26	S 70 C 39 708	CONTACTOR	1	IHC	30 A
27	S 70 C 20 239	EARTH LEAKAGE BREAKER	1	ECB2	1 ϕ 20 A
28	S 70 C 15 402	EXPANSION VESSEL	1		12 L
29	S 70 C 27 460	O-RING	3		ORANGE/ FOR SANITARY SIDE
30	S 70 C 23 460	O-RING	11		BLACK
31	S 70 C 26 460	O-RING	2		BLACK/ FOR FLOW SENSOR
32	S 70 C 10 465	FASTENER	14		FOR QUICK CONNECTION
33	S 70 C 20 465	FASTENER	2		FOR FLOW SENSOR
34	S 70 C 01 800	GREASE	16 *		100 g/ FOR QUICK CONNECTION

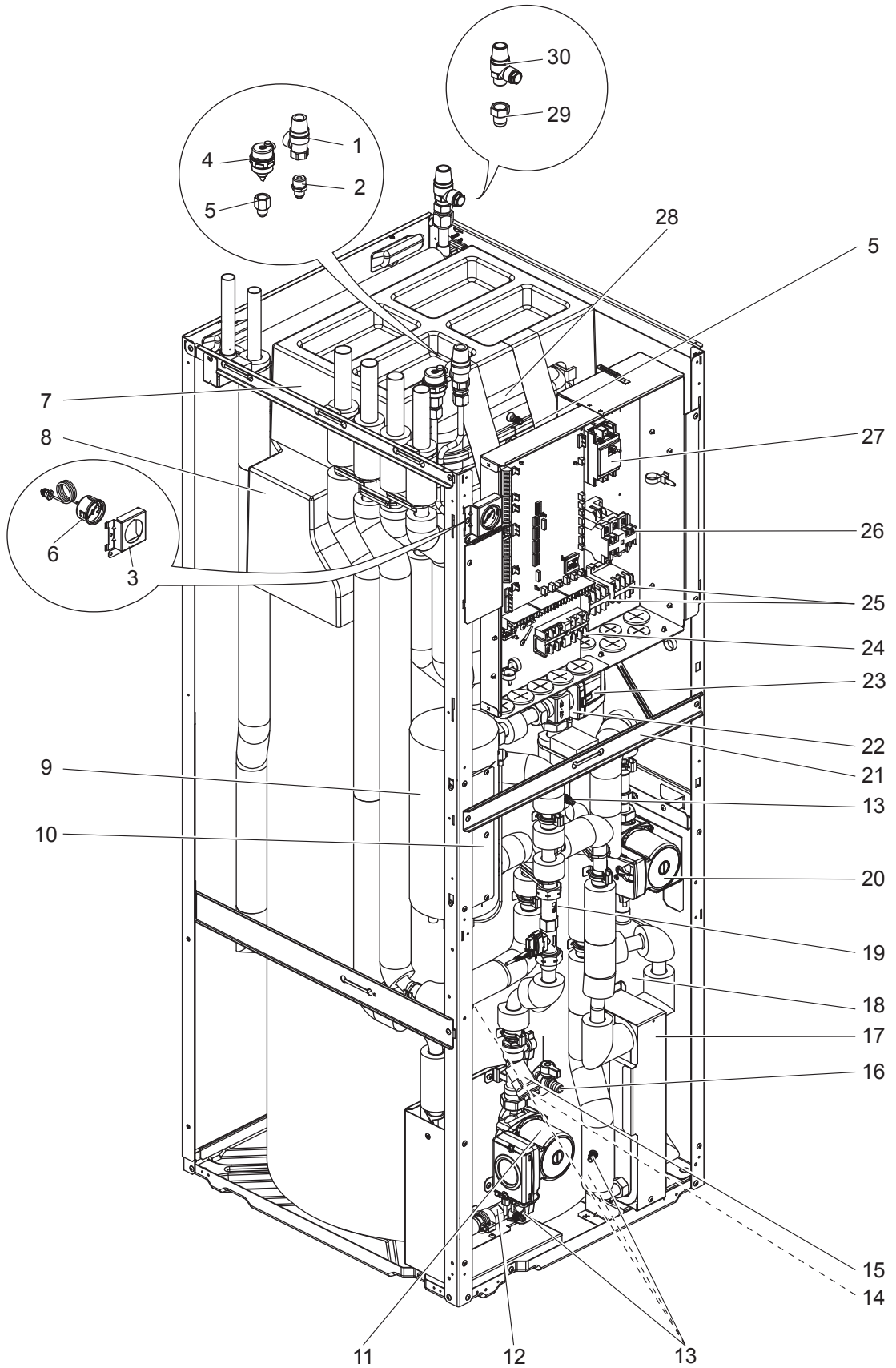
Do not reuse the O-ring or strainer packing that was once removed, but be sure to replace with a new one.

* Apply grease appropriately on the O-ring for the quick connection in the unit.

EHPT20X-VM2C.UK
EHPT20X-VM2CR1.UK
EHPT20X-TM9C.UK
EHPT20X-TM9CR1.UK

EHPT20X-VM6C.UK
EHPT20X-VM6CR1.UK

EHPT20X-YM9C.UK
EHPT20X-YM9CR1.UK



1. The part quantity below indicates the required number of pieces per unit.
2. The circled No. indicates that the part is not shown in the figure.

No.	Parts No.	Parts name	EHP20X-VM2C(R1).UK	EHP20X-VM6C(R1).UK	EHP20X-VM9C(R1).UK	EHP20X-TM9C(R1).UK	Wiring diagram symbol	Remarks [Drawing No.]
1	S70 C21 404	PRESSURE RELIEF VALVE	1	1	1	1		3 bar/ 6 years
2	S70 C60 096	FLARE JOINT	1	1	1	1		3/8F-R1/2
3	S70 C50 206	MANOMETER STAY	1	1	1	1		
4	S70 C17 150	AIR VENT (AUTOMATIC)	1	1	1	1		6 years
5	S70 C50 096	FLARE JOINT	2	2	2	2		3/8F-G3/8
6	S70 C20 205	MANOMETER	1	1	1	1		6 years
7	—	EXPANSION VESSEL CUSHION ASSY	1	1	1	1		[BK00T056G02]
8	—	TANK CUSHION TOP ASSY	1	1	1	1		[BK00T055G03]
9	S70 C11 441	BOOSTER HEATER	1				BH1	1 ϕ 230 V 2 kW
9	S70 C12 441	BOOSTER HEATER		1			BH1, BH2	1 ϕ 230 V 6 kW
9	S70 C13 441	BOOSTER HEATER			1		BH1, BH2	3 ϕ 400 V 9 kW
9	S70 C14 441	BOOSTER HEATER				1	BH1, BH2	3 ϕ 230 V 9 kW
10	—	HEATER STAY	1	1	1	1		[BK00R873G02]
11	S70 C06 355	WATER PUMP	1	1	1	1	MP1	FOR PRIMARY CIRCUIT 20,000 hrs (3 years)(*)
12	S70 C20 356	PUMP VALVE	1	1	1	1		
13	S70 C10 358	DRAIN COCK/AIR VENT (WATER CAP ASSY 320)	5	5	5	5		FOR PRIMARY/SANITARY CIRCUIT 6 years
14	S70 C28 460	STRAINER PACKING	1	1	1	1		FOR STRAINER
15	S70 C20 452	STRAINER VALVE	1	1	1	1		
16	S70 C15 357	DRAIN COCK	1	1	1	1		FOR TANK
17	S70 C80 408	WATER COIL ASSY (W)	1	1	1	1		CB18-24H/ WATER-WATER
18	S70 C50 357	SCALE TRAP	1	1	1	1		
19	S70 C45 266	FLOW SENSOR (BODY & CABLE)	1	1	1	1		
20	S70 C05 355	WATER PUMP	1	1	1	1	MP4	FOR SANITARY CIRCUIT
21	—	DIV FRAME H DWG	1	1	1	1		[BK00T057G01]
22	S70 C24 406	3WAY VALVE (DIVERTING VALVE)	1	1	1	1		
23	S70 C25 762	3WAY VALVE (DIVERTING MOTOR)	1	1	1	1	3WV	
24	S70 C20 515	TERMINAL BED	1	1	1	1		6P (#250LNE+S123)
25	S70 C39 708	CONTACTOR	1	2	2	2	BHC1, BHC2	30 A
26	S70 C49 708	CONTACTOR	1	1	1	1	BHCP	32 A
27	S70 C20 239	EARTH LEAKAGE BREAKER	1				ECB1	1 ϕ 20 A
27	S70 C60 239	EARTH LEAKAGE BREAKER		1			ECB1	1 ϕ 40 A
27	S70 C70 239	EARTH LEAKAGE BREAKER			1	1	ECB1	3 ϕ 30 A
28	S70 C15 402	EXPANSION VESSEL	1	1	1	1		12 L
29	S70 C70 096	FLARE JOINT	1	1	1	1		5/8F-R1/2
30	S70 C30 404	PRESSURE RELIEF VALVE	1	1	1	1		10 bar/ FOR TANK
31	S70 C23 460	O-RING	11	11	11	11		BLACK
32	S70 C10 465	FASTENER	9	9	9	9		FOR QUICK CONNECTION
33	S70 C01 800	GREASE	9*	9*	9*	9*		100 g/ FOR QUICK CONNECTION

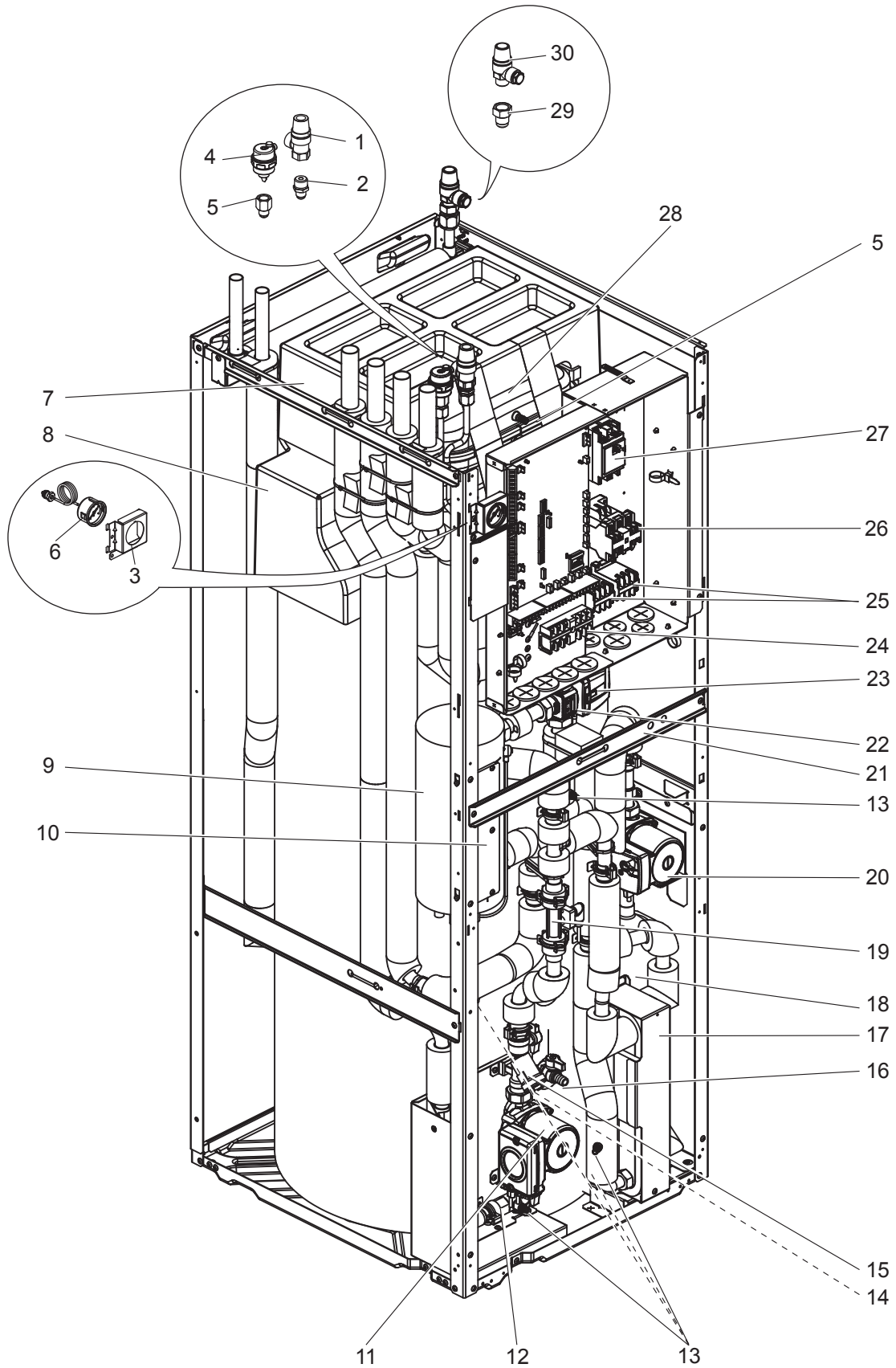
Do not reuse the O-ring or strainer packing that was once removed, but be sure to replace with a new one.

* Apply grease appropriately on the O-ring for the quick connection in the unit.

EHPT20X-VM2CR2.UK
EHPT20X-TM9CR2.UK

EHPT20X-VM6CR2.UK
EHPT20X-VM2C2R2.UK

EHPT20X-YM9CR2.UK



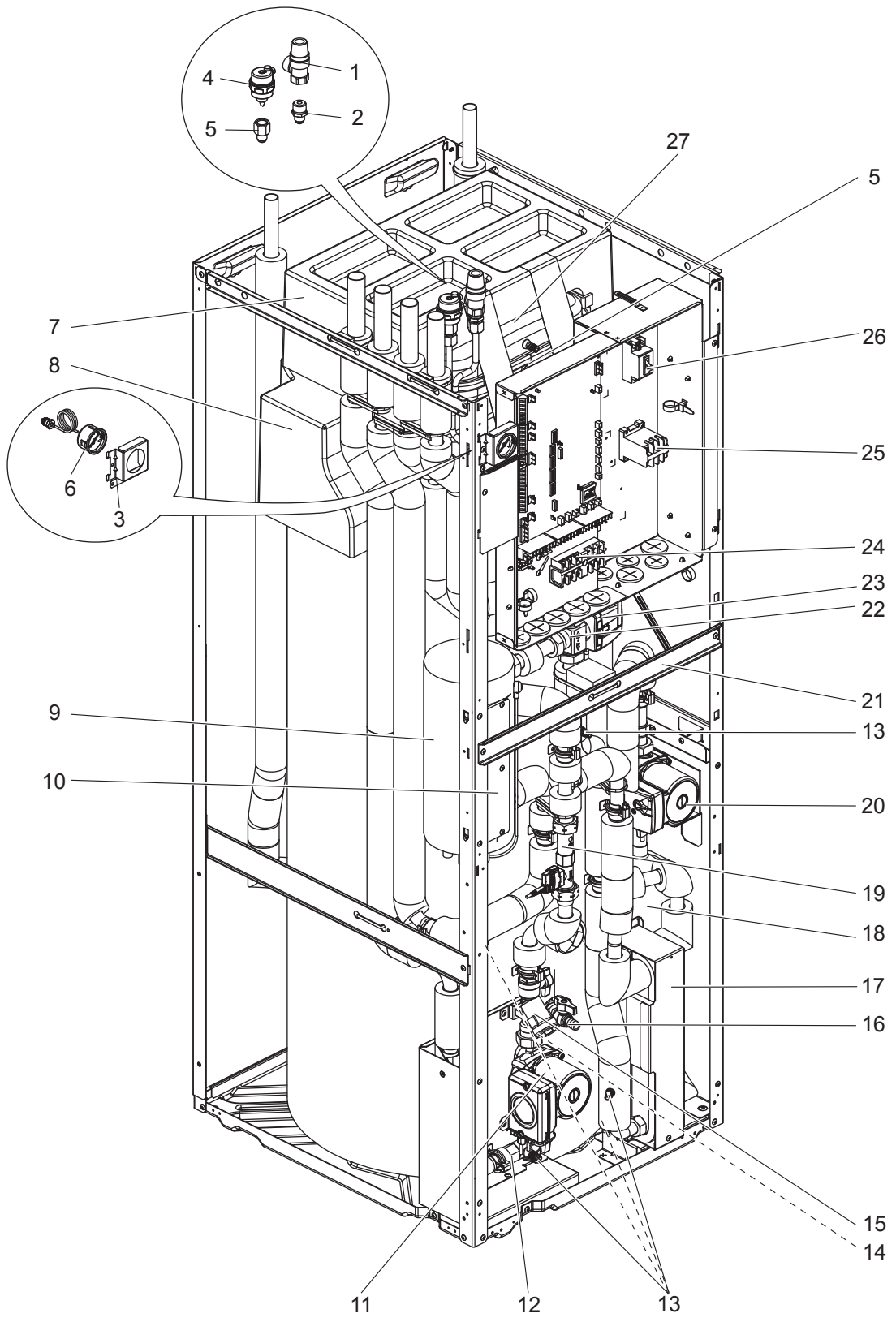
1. The part quantity below indicates the required number of pieces per unit.
2. The circled No. indicates that the part is not shown in the figure.

No.	Parts No.	Parts name					Wiring diagram symbol	Remarks [Drawing No.]
			EHPT20X-VM2C(2)R2.UK	EHPT20X-VM6CR2.UK	EHPT20X-YM9CR2.UK	EHPT20X-TM9CR2.UK		
1	S70 C21 404	PRESSURE RELIEF VALVE	1	1	1	1		3 bar/ 6 years
2	S70 C60 096	FLARE JOINT	1	1	1	1		3/8F-R1/2
3	S70 C70 206	MANOMETER STAY	1	1	1	1		
4	S70 C17 150	AIR VENT (AUTOMATIC)	1	1	1	1		6 years
5	S70 C50 096	FLARE JOINT	2	2	2	2		3/8F-G3/8
6	S70 C20 205	MANOMETER	1	1	1	1		6 years
7	—	EXPANSION VESSEL CUSHION ASSY	1	1	1	1		[BK00T056G02]
8	—	TANK CUSHION TOP ASSY	1	1	1	1		[BK00T055G03]
9	S70 C11 441	BOOSTER HEATER	1				BH1	1 ϕ 230 V 2 kW
9	S70 C12 441	BOOSTER HEATER		1			BH1, BH2	1 ϕ 230 V 6 kW
9	S70 C13 441	BOOSTER HEATER			1		BH1, BH2	3 ϕ 400 V 9 kW
9	S70 C14 441	BOOSTER HEATER				1	BH1, BH2	3 ϕ 230 V 9 kW
10	—	HEATER STAY	1	1	1	1		[BK00R873G02]
11	S70 C06 355	WATER PUMP	1	1	1	1	MP1	FOR PRIMARY CIRCUIT 20,000 hrs (3 years)(*)
12	S70 C20 356	PUMP VALVE	1	1	1	1		
13	S70 C10 358	DRAIN COCK/AIR VENT (WATER CAP ASSY 320)	5	5	5	5		FOR PRIMARY/SANITARY CIRCUIT 6 years
14	S70 C28 460	STRAINER PACKING	1	1	1	1		FOR STRAINER
15	S70 C20 452	STRAINER VALVE	1	1	1	1		
16	S70 C15 357	DRAIN COCK	1	1	1	1		FOR TANK
17	S70 C80 408	WATER COIL ASSY (W)	1	1	1	1		CB18-24H/ WATER-WATER
18	S70 C50 357	SCALE TRAP	1	1	1	1		
19	S70 C74 266	FLOW SENSOR (BODY & CABLE)	1	1	1	1		
20	S70 C05 355	WATER PUMP	1	1	1	1	MP4	FOR SANITARY CIRCUIT
21	—	DIV FRAME H DWG	1	1	1	1		[BK02N520G03]
22	S70 C24 406	3WAY VALVE (DIVERTING VALVE)	1	1	1	1		
23	S70 C25 762	3WAY VALVE (DIVERTING MOTOR)	1	1	1	1	3WV	
24	S70 C20 515	TERMINAL BED	1	1	1	1		6P (#250LNE+S123)
25	S70 C39 708	CONTACTOR	1	2	2	2	BHC1, BHC2	30 A
26	S70 C49 708	CONTACTOR	1	1	1	1	BHCP	32 A
27	S70 C20 239	EARTH LEAKAGE BREAKER	1				ECB1	1 ϕ 20 A
27	S70 C60 239	EARTH LEAKAGE BREAKER		1			ECB1	1 ϕ 40 A
27	S70 C70 239	EARTH LEAKAGE BREAKER			1	1	ECB1	3 ϕ 30 A
28	S70 C15 402	EXPANSION VESSEL	1	1	1	1		12 L
29	S70 C70 096	FLARE JOINT	1	1	1	1		5/8F-R1/2
30	S70 C30 404	PRESSURE RELIEF VALVE	1	1	1	1		10 bar/ FOR TANK
(31)	S70 C23 460	O-RING	9	9	9	9		BLACK
(32)	S70 C26 460	O-RING	2	2	2	2		BLACK/ FOR FLOW SENSOR
(33)	S70 C10 465	FASTENER	9	9	9	9		FOR QUICK CONNECTION
(34)	S70 C20 465	FASTENER	2	2	2	2		FOR FLOW SENSOR
(35)	S70 C01 800	GREASE	11 *	11 *	11 *	11 *		100 g/ FOR QUICK CONNECTION

Do not reuse the O-ring or strainer packing that was once removed, but be sure to replace with a new one.

* Apply grease appropriately on the O-ring for the quick connection in the unit.

EHPT20X-MHCW.UK
EHPT20X-MHCWR1.UK



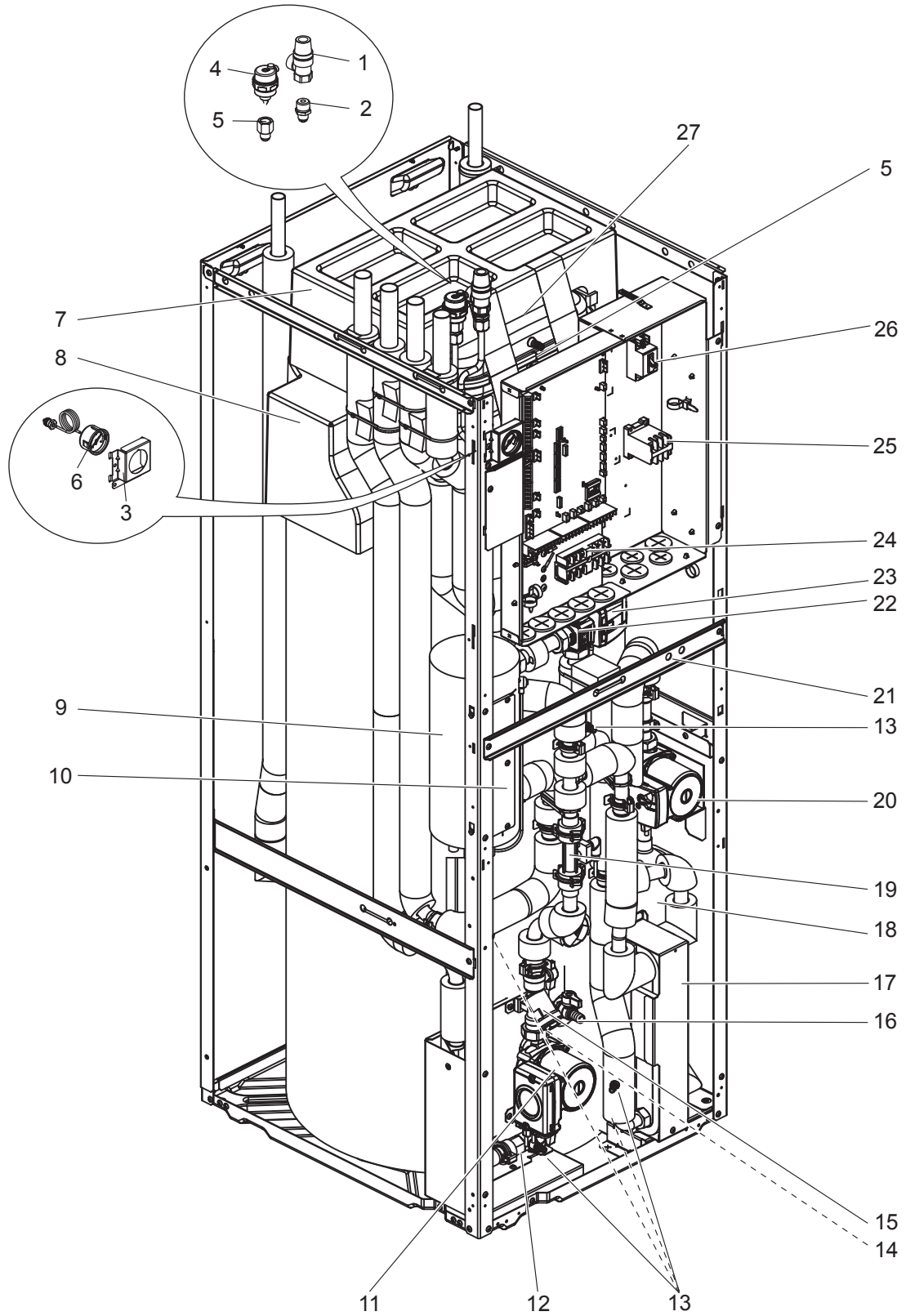
1. The part quantity below indicates the required number of pieces per unit.
2. The circled No. indicates that the part is not shown in the figure.

No.	Parts No.	Parts name	EHPT20X-MHCW(R1).UK	Wiring diagram symbol	Remarks [Drawing No.]
1	S 7 0 C 2 1 4 0 4	PRESSURE RELIEF VALVE	1		3 bar/ 6 years
2	S 7 0 C 6 0 0 9 6	FLARE JOINT	1		3/8F-R1/2
3	S 7 0 C 5 0 2 0 6	MANOMETER STAY	1		
4	S 7 0 C 1 7 1 5 0	AIR VENT (AUTOMATIC)	1		6 years
5	S 7 0 C 5 0 0 9 6	FLARE JOINT	2		3/8F-G3/8
6	S 7 0 C 2 0 2 0 5	MANOMETER	1		6 years
7	—	EXPANSION VESSEL CUSHION ASSY	1		[BK00T056G02]
8	—	TANK CUSHION TOP ASSY	1		[BK00T055G03]
9	S 7 0 C 1 5 4 4 1	BOOSTER HEATER	1		0 kW
10	—	HEATER STAY	1		[BK00R873G02]
11	S 7 0 C 0 6 3 5 5	WATER PUMP	1	MP1	FOR PRIMARY CIRCUIT 20,000 hrs (3 years)(*)
12	S 7 0 C 2 0 3 5 6	PUMP VALVE	1		
13	S 7 0 C 1 0 3 5 8	DRAIN COCK/AIR VENT (WATER CAP ASSY 320)	5		FOR PRIMARY/SANITARY CIRCUIT 6 years
14	S 7 0 C 2 8 4 6 0	STRAINER PACKING	1		FOR STRAINER
15	S 7 0 C 2 0 4 5 2	STRAINER VALVE	1		
16	S 7 0 C 1 5 3 5 7	DRAIN COCK	1		FOR TANK
17	S 7 0 C 8 0 4 0 8	WATER COIL ASSY (W)	1		CB18-24H/ WATER-WATER
18	S 7 0 C 5 0 3 5 7	SCALE TRAP	1		
19	S 7 0 C 4 5 2 6 6	FLOW SENSOR (BODY & CABLE)	1		
20	S 7 0 C 0 5 3 5 5	WATER PUMP	1	MP4	FOR SANITARY CIRCUIT
21	—	DIV FRAME H DWG	1		[BK00T057G01]
22	S 7 0 C 2 4 4 0 6	3WAY VALVE (DIVERTING VALVE)	1		
23	S 7 0 C 2 5 7 6 2	3WAY VALVE (DIVERTING MOTOR)	1	3WV	
24	S 7 0 C 2 0 5 1 5	TERMINAL BED	1		6P (#250LNE+S123)
25	S 7 0 C 3 9 7 0 8	CONTACTOR	1	IHC	30 A
26	S 7 0 C 2 0 2 3 9	EARTH LEAKAGE BREAKER	1	ECB2	1 ϕ 20 A
27	S 7 0 C 1 5 4 0 2	EXPANSION VESSEL	1		12 L
28	S 7 0 C 2 7 4 6 0	O-RING	3		ORANGE/ FOR SANITARY SIDE
29	S 7 0 C 2 3 4 6 0	O-RING	9		BLACK
30	S 7 0 C 1 0 4 6 5	FASTENER	10		FOR QUICK CONNECTION
31	S 7 0 C 0 1 8 0 0	GREASE	10 *		100 g/ FOR QUICK CONNECTION

Do not reuse the O-ring or strainer packing that was once removed, but be sure to replace with a new one.

* Apply grease appropriately on the O-ring for the quick connection in the unit.

EHPT20X-MHCWR2.UK



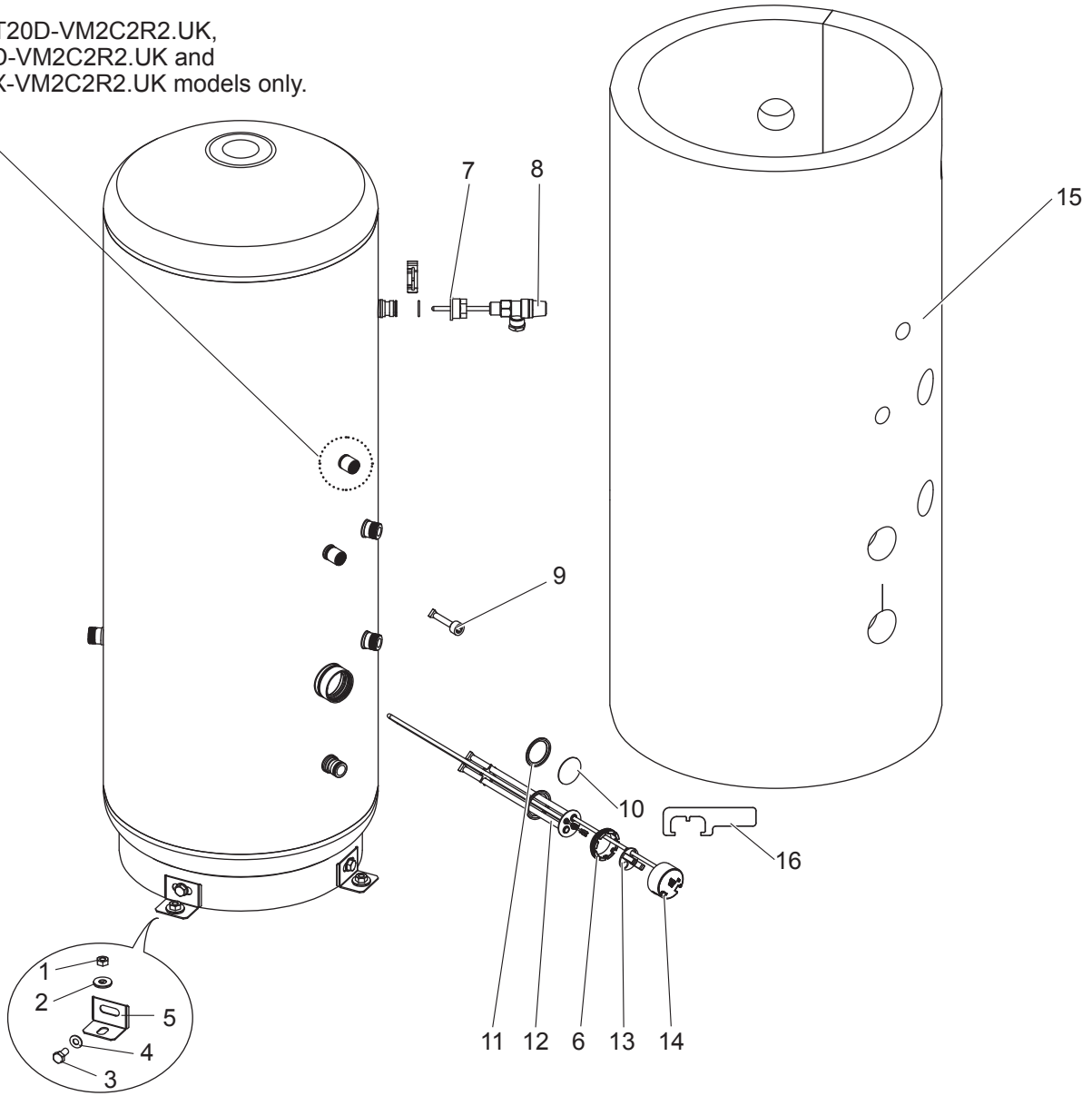
1. The part quantity below indicates the required number of pieces per unit.
2. The circled No. indicates that the part is not shown in the figure.

No.	Parts No.	Parts name	EHPT20X-MHCWR2.UK	Wiring diagram symbol	Remarks [Drawing No.]
1	S 7 0 C 2 1 4 0 4	PRESSURE RELIEF VALVE	1		3 bar/ 6 years
2	S 7 0 C 6 0 0 9 6	FLARE JOINT	1		3/8F-R1/2
3	S 7 0 C 7 0 2 0 6	MANOMETER STAY	1		
4	S 7 0 C 1 7 1 5 0	AIR VENT (AUTOMATIC)	1		6 years
5	S 7 0 C 5 0 0 9 6	FLARE JOINT	2		3/8F-G3/8
6	S 7 0 C 2 0 2 0 5	MANOMETER	1		6 years
7	—	EXPANSION VESSEL CUSHION ASSY	1		[BK00T056G02]
8	—	TANK CUSHION TOP ASSY	1		[BK00T055G03]
9	S 7 0 C 1 5 4 4 1	BOOSTER HEATER	1		0 kW
10	—	HEATER STAY	1		[BK00R873G02]
11	S 7 0 C 0 6 3 5 5	WATER PUMP	1	MP1	FOR PRIMARY CIRCUIT 20,000 hrs (3 years)(*)
12	S 7 0 C 2 0 3 5 6	PUMP VALVE	1		
13	S 7 0 C 1 0 3 5 8	DRAIN COCK/AIR VENT (WATER CAP ASSY 320)	5		FOR PRIMARY/SANITARY CIRCUIT 6 years
14	S 7 0 C 2 8 4 6 0	STRAINER PACKING	1		FOR STRAINER
15	S 7 0 C 2 0 4 5 2	STRAINER VALVE	1		
16	S 7 0 C 1 5 3 5 7	DRAIN COCK	1		FOR TANK
17	S 7 0 C 8 0 4 0 8	WATER COIL ASSY (W)	1		CB18-24H/ WATER-WATER
18	S 7 0 C 5 0 3 5 7	SCALE TRAP	1		
19	S 7 0 C 7 4 2 6 6	FLOW SENSOR (BODY & CABLE)	1		
20	S 7 0 C 0 5 3 5 5	WATER PUMP	1	MP4	FOR SANITARY CIRCUIT
21	—	DIV FRAME H DWG	1		[BK02N520G03]
22	S 7 0 C 2 4 4 0 6	3WAY VALVE (DIVERTING VALVE)	1		
23	S 7 0 C 2 5 7 6 2	3WAY VALVE (DIVERTING MOTOR)	1	3WV	
24	S 7 0 C 2 0 5 1 5	TERMINAL BED	1		6P (#250LNE+S123)
25	S 7 0 C 3 9 7 0 8	CONTACTOR	1	IHC	30 A
26	S 7 0 C 2 0 2 3 9	EARTH LEAKAGE BREAKER	1	ECB2	1 ϕ 20 A
27	S 7 0 C 1 5 4 0 2	EXPANSION VESSEL	1		12 L
28	S 7 0 C 2 7 4 6 0	O-RING	3		ORANGE FOR SANITARY SIDE
29	S 7 0 C 2 3 4 6 0	O-RING	7		BLACK
30	S 7 0 C 2 6 4 6 0	O-RING	2		BLACK FOR FLOW SENSOR
31	S 7 0 C 1 0 4 6 5	FASTENER	10		FOR QUICK CONNECTION
32	S 7 0 C 2 0 4 6 5	FASTENER	2		FOR FLOW SENSOR
33	S 7 0 C 0 1 8 0 0	GREASE	12*		100 g/ FOR QUICK CONNECTION

Do not reuse the O-ring or strainer packing that was once removed, but be sure to replace with a new one.

* Apply grease appropriately on the O-ring for the quick connection in the unit.

For EHST20D-VM2C2R2.UK,
ERST20D-VM2C2R2.UK and
EHPT20X-VM2C2R2.UK models only.



1. The part quantity below indicates the required number of pieces per unit.
2. The circled No. indicates that the part is not shown in the figure.

No.	Parts No.	Parts name	EHST20C-VM2C(R1).UK EHST20C-VM2CR2.UK EHST20C-VM6C(R1).UK EHST20C-VM6CR2.UK EHST20C-VM9C(R1).UK EHST20C-VM9CR2.UK EHST20C-TM9C(R1).UK EHST20C-TM9CR2.UK EHST20C-VM2EC(R1).UK EHST20C-VM2ECR2.UK EHST20C-VM6EC(R1).UK EHST20C-VM6ECR2.UK EHST20C-VM9EC(R1).UK EHST20C-VM9ECR2.UK EHST20C-MEC(R1).UK EHST20C-MECR2.UK EHST20D-MEC(R1).UK EHST20D-MECR2.UK EHST20D-VM2C(R1).UK EHST20D-VM2CR2.UK EHST20D-VM2EC(R1).UK EHST20D-VM2ECR2.UK EHST20D-VM9C(R1).UK EHST20D-VM9CR2.UK EHPT20X-VM2C(R1).UK EHPT20X-VM2CR2.UK EHPT20X-VM6C(R1).UK EHPT20X-VM6CR2.UK EHPT20X-VM9C(R1).UK EHPT20X-VM9CR2.UK EHPT20X-TM9C(R1).UK EHPT20X-TM9CR2.UK ERST20C-VM2C(R1).UK ERST20C-VM2CR2.UK ERST20C-MEC(R1).UK ERST20C-MECR2.UK ERST20D-VM2C(R1).UK ERST20D-VM2CR2.UK ERST20D-MEC(R1).UK ERST20D-MECR2.UK EHST20D-VM2C2R2.UK ERST20D-VM2C2R2.UK EHPT20X-VM2C2R2.UK	EHST20C-MHCW(R1).UK EHST20C-MHCWR2.UK EHST20D-MHCW(R1).UK EHST20D-MHCWR2.UK EHPT20X-MHCW(R1).UK EHPT20X-MHCWR2.UK	EHST20D-MHC(R1).UK EHST20D-MHCR2.UK	Wiring diagram symbol	Remarks [Drawing No.]
1	S70 C10 097	NUT	3	3	3	M10	
2	S70 C61 097	WASHER	3	3	3		
3	S70 C30 097	BOLT	3	3	3	M10×20	
4	S70 C20 097	WASHER	3	3	3		
5	S70 C30 042	TANK LEG	3	3	3		
6	S70 C60 097	BACK NUT	1	1	1		
7	S70 C20 405	JOINT (TEMPERATURE AND PRESSURE RELIEF VALVE)		1			
8	S70 C19 404	TEMPERATURE AND PRESSURE RELIEF VALVE		1		90°C/ 7 bar	
9	S70 C11 525	STAT POCKET ASSEMBLY	1	1	1		
10	S70 C40 446	BLANKING PLATE	1			FOR TANK	
11	S70 C33 460	ELEMENT PLATE GASKET	1	1	1		
12	S70 C50 445	IMMERSION HEATER		1	1	IH 1 φ 3 kW 2 years(*)	
13	S70 C33 461	ELEMENT PLATE TERMINAL COVER		1	1		
14	S70 C08 201	THERMOSTAT		1	1	IHT	
15	S70 C60 042	TANK INSLATOR	1	1	1		
16	S70 C10 406	JIG (FOR BACK NUT)	1	1	1		

Do not reuse the ELEMENT PLATE GASKET (No.11) that was once removed, but be sure to replace with a new one.

When removing and reinstalling the IMMERSION HEATER (No.12) or BLANKING PLATE (No.10), JIG (for BACK NUT) (No.16) is required.

EHST20C-VM2C.UK
 EHST20C-TM9C.UK
 EHST20C-YM9EC.UK
 EHST20D-VM2C.UK
 EHST20D-MEC.UK
 EHPT20X-VM2C.UK
 EHPT20X-TM9C.UK
 ERST20C-VM2C.UK
 ERST20D-VM2C.UK

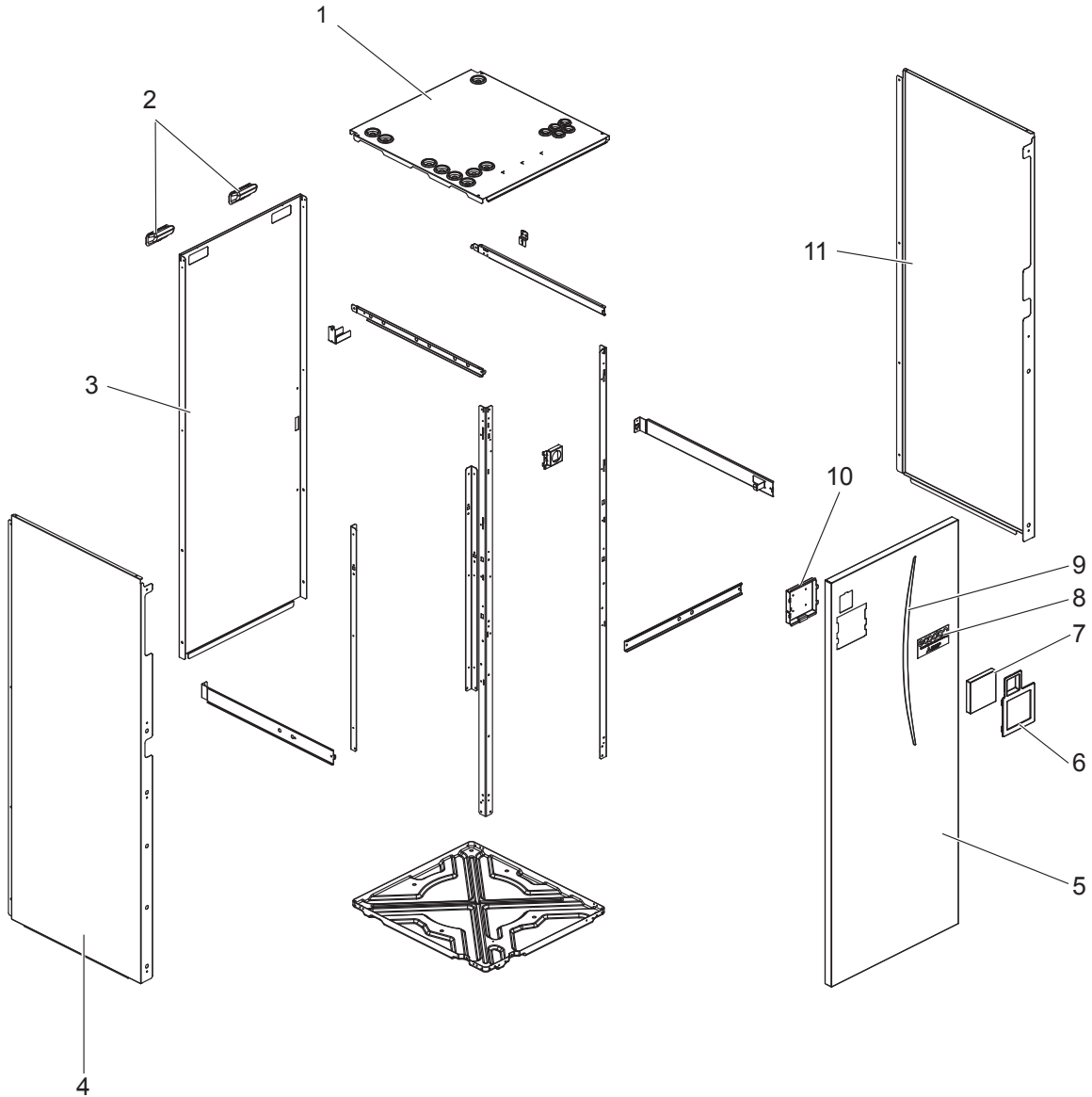
EHST20C-VM6C.UK
 EHST20C-VM2EC.UK
 EHST20C-MEC.UK
 EHST20D-VM2EC.UK
 EHST20D-MHC.UK
 EHPT20X-VM6C.UK

ERST20C-MEC.UK
 ERST20D-MEC.UK

EHST20C-YM9C.UK
 EHST20C-VM6EC.UK

EHST20D-YM9C.UK

EHPT20X-YM9C.UK



1. The part quantity below indicates the required number of pieces per unit.
2. The circled No. indicates that the part is not shown in the figure.

No.	Parts No.	Parts name	EHST20C-VM2C.UK	EHST20C-VM6C.UK	EHST20C-YM9C.UK	EHST20C-TM9C.UK	EHST20C-VM2EC.UK	EHST20C-VM6EC.UK	EHST20C-YM9EC.UK	EHST20C-MEC.UK	EHST20D-VM2C.UK	EHST20D-VM2EC.UK	EHST20D-YM9C.UK	EHST20D-MEC.UK	EHST20D-MHC.UK	EHPT20X-VM2C.UK	EHPT20X-VM6C.UK	EHPT20X-YM9C.UK	EHPT20X-TM9C.UK	ERST20C-VM2C.UK	ERST20C-MEC.UK	ERST20D-VM2C.UK	ERST20D-MEC.UK	Remarks [Drawing No.]
1	S70 C09 641	TOP PANEL ASSY	1	1	1	1	1	1	1	1	1	1	1	1	1					1	1	1	1	INCLUDES PIPE LOCATION LABEL & BUSH
1	S70 C10 641	TOP PANEL ASSY														1	1	1	1					
2	S70 30L 655	HANDLE	2	2	2	2	2	2	2	2	2	2	2	2	2	2	2	2	2	2	2	2	2	
3	S70 C19 661	BACK PANEL	1	1	1	1	1	1	1	1	1	1	1	1	1	1	1	1	1	1	1	1	1	
4	S70 C20 662	SIDE PANEL L	1	1	1	1	1	1	1	1	1	1	1	1	1	1	1	1	1					
4	S70 C30 662	SIDE PANEL L																		1	1	1	1	INSULATION EQUIPPED
5	S70 C21 668	FRONT PANEL	1	1	1	1	1	1	1	1	1	1	1	1	1	1	1	1	1	1	1	1	1	
6	S70 C21 710	MAIN REMOTE CONTROLLER HOLDER	1	1	1	1	1	1	1	1	1	1	1	1	1	1	1	1	1	1	1	1	1	
7	S70 C85 200	MAIN REMOTE CONTROLLER ASSY	1	1	1	1	1	1	1	1	1	1	1	1	1	1	1	1	1	1	1	1	1	
8	S70 C25 699	BRAND LABEL	1	1	1	1	1	1	1	1	1	1	1	1	1	1	1	1	1	1	1	1	1	
9	S70 C30 699	LEAF LABEL	1	1	1	1	1	1	1	1	1	1	1	1	1	1	1	1	1	1	1	1	1	
10	—	MAIN REMOTE CONTROLLER SUPPORT	1	1	1	1	1	1	1	1	1	1	1	1	1	1	1	1	1	1	1	1	1	[BK00R897G01]
11	S70 C08 662	SIDE PANEL R	1	1	1	1	1	1	1	1	1	1	1	1	1	1	1	1	1	1	1	1	1	
⑫	S70 C01 699	WIRING DIAGRAM FOR FRONT PANEL	1				1				1	1				1					1	1	2 kW	
⑫	S70 C02 699	WIRING DIAGRAM FOR FRONT PANEL		1				1									1							6 kW
⑫	S70 C03 699	WIRING DIAGRAM FOR FRONT PANEL			1				1				1					1						9 kW(Y)
⑫	S70 C04 699	WIRING DIAGRAM FOR FRONT PANEL				1														1				9 kW(T)
⑫	S70 C05 699	WIRING DIAGRAM FOR FRONT PANEL								1				1	1						1		1	0 kW

EHST20C-VM2CR1.UK
 EHST20C-TM9CR1.UK
 EHST20C-YM9ECR1.UK
 EHST20D-VM2CR1.UK
 EHST20D-MECCR1.UK
 EHPT20X-VM2CR1.UK
 EHPT20X-TM9CR1.UK
 ERST20C-VM2CR1.UK
 ERST20D-VM2CR1.UK

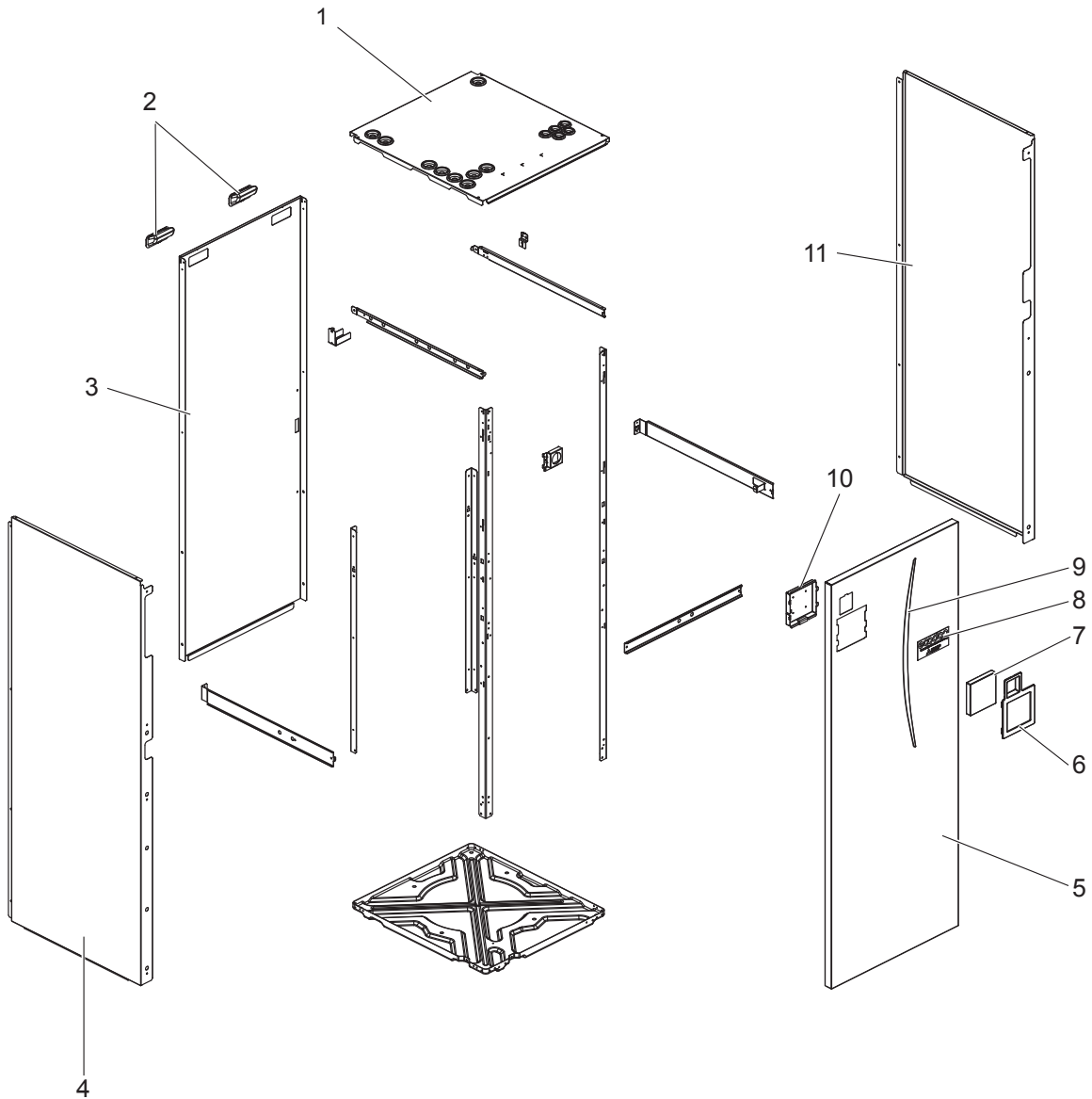
EHST20C-VM6CR1.UK
 EHST20C-VM2ECR1.UK
 EHST20C-MECCR1.UK
 EHST20D-VM2ECR1.UK
 EHST20D-MHCR1.UK
 EHPT20X-VM6CR1.UK

 ERST20C-MECCR1.UK
 ERST20D-MECCR1.UK

EHST20C-YM9CR1.UK
 EHST20C-VM6ECR1.UK

 EHST20D-YM9CR1.UK

 EHPT20X-YM9CR1.UK



1. The part quantity below indicates the required number of pieces per unit.
2. The circled No. indicates that the part is not shown in the figure.

No.	Parts No.	Parts name	EHST20C-VM2CR1.UK	EHST20C-VM6CR1.UK	EHST20C-VM9CR1.UK	EHST20C-TM9CR1.UK	EHST20C-VM2ECR1.UK	EHST20C-VM6ECR1.UK	EHST20C-VM9ECR1.UK	EHST20C-MECR1.UK	EHST20D-VM2CR1.UK	EHST20D-VM2ECR1.UK	EHST20D-VM9CR1.UK	EHST20D-MECR1.UK	EHST20D-MHCR1.UK	EHPT20X-VM2CR1.UK	EHPT20X-VM6CR1.UK	EHPT20X-VM9CR1.UK	EHPT20X-TM9CR1.UK	ERST20C-VM2CR1.UK	ERST20C-MECR1.UK	ERST20D-VM2CR1.UK	ERST20D-MECR1.UK	Remarks [Drawing No.]
			1	1	1	1	1	1	1	1	1	1	1	1	1	1	1	1	1	1	1	1	1	
1	S70 C09 641	TOP PANEL ASSY	1	1	1	1	1	1	1	1	1	1	1	1	1					1	1	1	1	INCLUDES PIPE LOCATION LABEL & BUSH
1	S70 C10 641	TOP PANEL ASSY														1	1	1	1					
2	S70 30L 655	HANDLE	2	2	2	2	2	2	2	2	2	2	2	2	2	2	2	2	2	2	2	2	2	
3	S70 C19 661	BACK PANEL	1	1	1	1	1	1	1	1	1	1	1	1	1	1	1	1	1	1	1	1	1	
4	S70 C20 662	SIDE PANEL L	1	1	1	1	1	1	1	1	1	1	1	1	1	1	1	1	1					
4	S70 C30 662	SIDE PANEL L																		1	1	1	1	INSULATION EQUIPPED
5	S70 C21 668	FRONT PANEL	1	1	1	1	1	1	1	1	1	1	1	1	1	1	1	1	1	1	1	1	1	
6	S70 C21 710	MAIN REMOTE CONTROLLER HOLDER	1	1	1	1	1	1	1	1	1	1	1	1	1	1	1	1	1	1	1	1	1	
7	S70 C85 200	MAIN REMOTE CONTROLLER ASSY	1	1	1	1	1	1	1	1	1	1	1	1	1	1	1	1	1	1	1	1	1	
8	S70 C25 699	BRAND LABEL	1	1	1	1	1	1	1	1	1	1	1	1	1	1	1	1	1	1	1	1	1	
9	S70 C30 699	LEAF LABEL	1	1	1	1	1	1	1	1	1	1	1	1	1	1	1	1	1	1	1	1	1	
10	—	MAIN REMOTE CONTROLLER SUPPORT	1	1	1	1	1	1	1	1	1	1	1	1	1	1	1	1	1	1	1	1	1	[BK00R897G01]
11	S70 C08 662	SIDE PANEL R	1	1	1	1	1	1	1	1	1	1	1	1	1	1	1	1	1	1	1	1	1	
⑫	S70 C07 699	WIRING DIAGRAM FOR FRONT PANEL	1				1				1	1				1				1		1		2 kW
⑫	S70 C08 699	WIRING DIAGRAM FOR FRONT PANEL		1				1									1							6 kW
⑫	S70 C09 699	WIRING DIAGRAM FOR FRONT PANEL			1				1			1						1						9 kW(Y)
⑫	S70 C10 699	WIRING DIAGRAM FOR FRONT PANEL				1													1					9 kW(T)
⑫	S70 C11 699	WIRING DIAGRAM FOR FRONT PANEL								1				1	1						1		1	0 kW

EHST20C-VM2CR2.UK
 EHST20C-TM9CR2.UK
 EHST20C-YM9ECR2.UK
 EHST20D-VM2CR2.UK
 EHST20D-MECCR2.UK
 EHPT20X-VM2CR2.UK
 EHPT20X-TM9CR2.UK
 ERST20C-VM2CR2.UK
 ERST20D-VM2CR2.UK
 EHST20D-VM2C2R2.UK

EHST20C-VM6CR2.UK
 EHST20C-VM2ECR2.UK
 EHST20C-MECCR2.UK
 EHST20D-VM2ECR2.UK
 EHST20D-MHCR2.UK
 EHPT20X-VM6CR2.UK

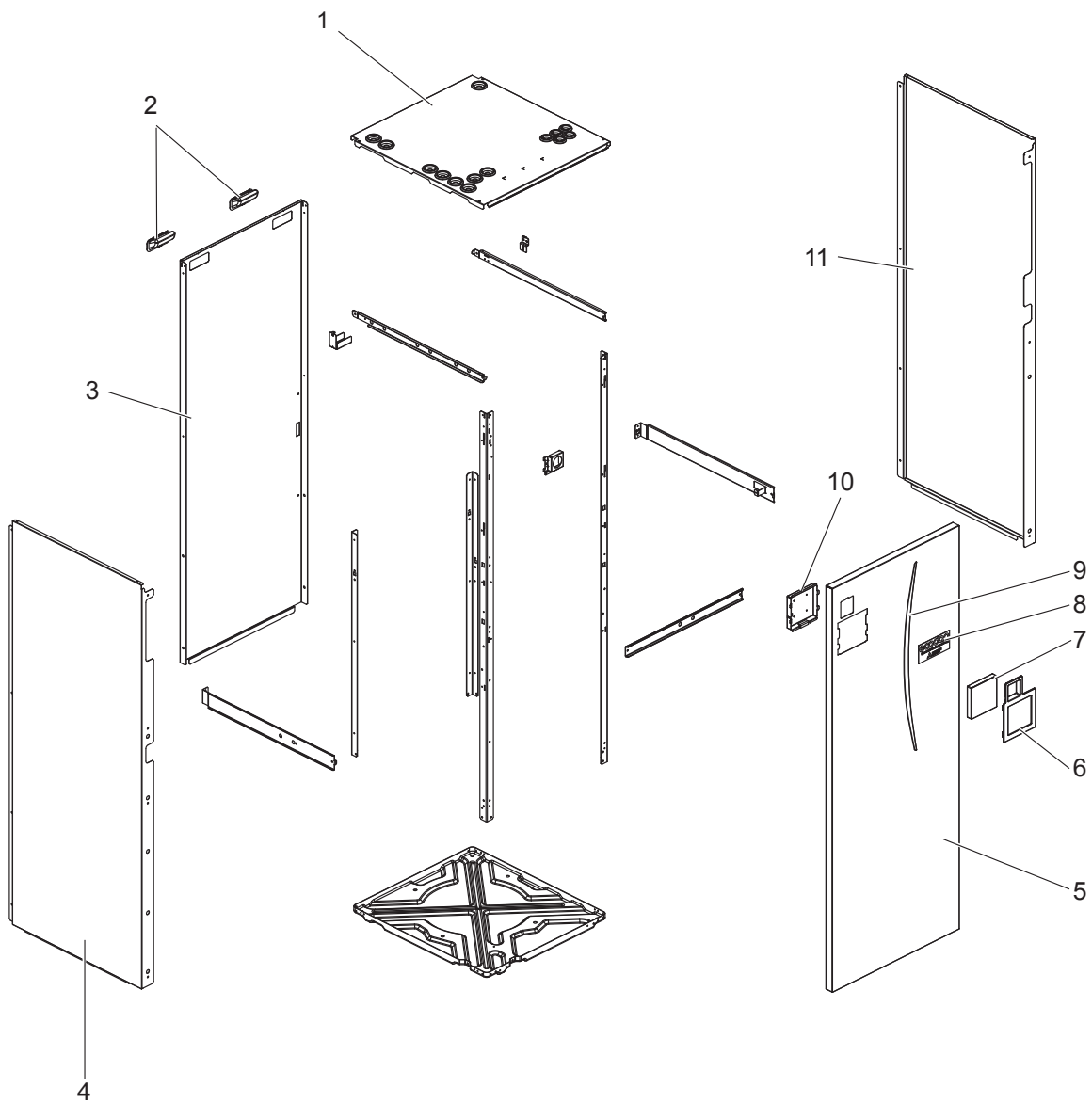
 ERST20C-MECCR2.UK
 ERST20D-MECCR2.UK
 ERST20D-VM2C2R2.UK

EHST20C-YM9CR2.UK
 EHST20C-VM6ECR2.UK

 EHST20D-YM9CR2.UK

 EHPT20X-YM9CR2.UK

 EHPT20X-VM2C2R2.UK



1. The part quantity below indicates the required number of pieces per unit.
2. The circled No. indicates that the part is not shown in the figure.

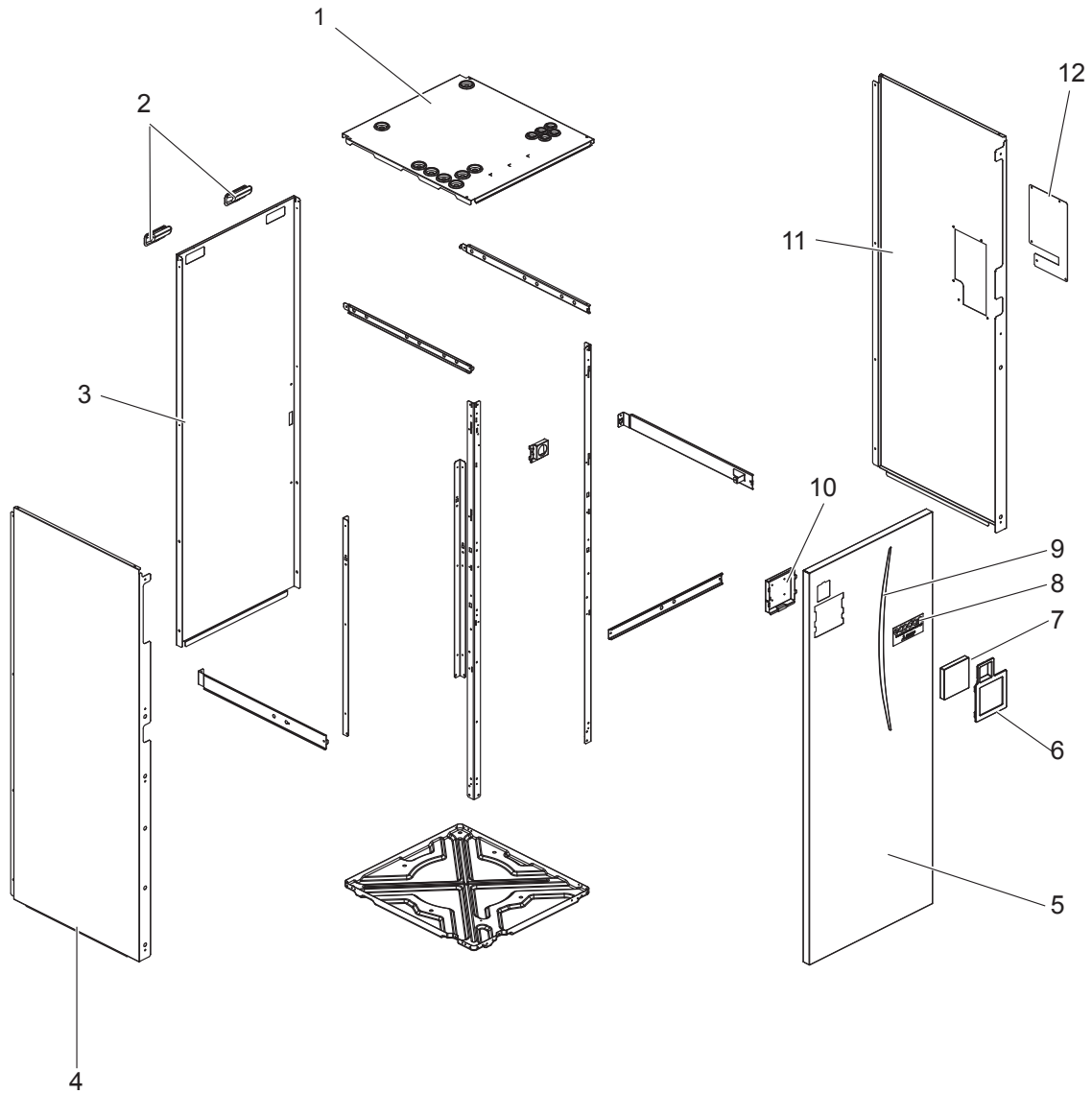
No.	Parts No.	Parts name	EHST20C-VM2CR2.UK	EHST20C-VM6CR2.UK	EHST20C-VM9CR2.UK	EHST20C-TM9CR2.UK	EHST20C-VM2ECCR2.UK	EHST20C-VM6ECCR2.UK	EHST20C-VM9ECCR2.UK	EHST20C-MECCR2.UK	EHST20D-VM2CR2.UK	EHST20D-VM2ECCR2.UK	EHST20D-VM9CR2.UK	EHST20D-MECCR2.UK	Remarks [Drawing No.]
1	S70 C18 641	TOP PANEL ASSY	1	1	1	1	1	1	1	1	1	1	1	1	INCLUDES PIPE LOCATION LABEL & BUSH
1	S70 C19 641	TOP PANEL ASSY													
2	S70 30L 655	HANDLE	2	2	2	2	2	2	2	2	2	2	2	2	
3	S70 C19 661	BACK PANEL	1	1	1	1	1	1	1	1	1	1	1	1	
4	S70 C40 662	SIDE PANEL L	1	1	1	1	1	1	1	1	1	1	1	1	
4	S70 C50 662	SIDE PANEL L													INSULATION EQUIPPED
5	S70 C22 668	FRONT PANEL	1	1	1	1	1	1	1	1	1	1	1	1	
6	S70 C31 710	MAIN REMOTE CONTROLLER HOLDER	1	1	1	1	1	1	1	1	1	1	1	1	
7	S70 C85 200	MAIN REMOTE CONTROLLER ASSY	1	1	1	1	1	1	1	1	1	1	1	1	
8	S70 C25 699	BRAND LABEL	1	1	1	1	1	1	1	1	1	1	1	1	
9	S70 C30 699	LEAF LABEL	1	1	1	1	1	1	1	1	1	1	1	1	
10	—	MAIN REMOTE CONTROLLER SUPPORT	1	1	1	1	1	1	1	1	1	1	1	1	[BK00R897G01]
11	S70 C10 662	SIDE PANEL R	1	1	1	1	1	1	1	1	1	1	1	1	
⑫	S70 C13 699	WIRING DIAGRAM FOR FRONT PANEL	1				1				1	1			2 kW
⑫	S70 C14 699	WIRING DIAGRAM FOR FRONT PANEL		1				1							6 kW
⑫	S70 C15 699	WIRING DIAGRAM FOR FRONT PANEL			1				1				1		9 kW(Y)
⑫	S70 C16 699	WIRING DIAGRAM FOR FRONT PANEL				1									9 kW(T)
⑫	S70 C17 699	WIRING DIAGRAM FOR FRONT PANEL								1				1	0 kW

No.	Parts No.	Parts name	EHST20D-MHCR2.UK	EHP20X-VM2CR2.UK	EHP20X-VM6CR2.UK	EHP20X-VM9CR2.UK	EHP20X-TM9CR2.UK	ERST20C-VM2CR2.UK	ERST20C-MECCR2.UK	ERST20D-VM2CR2.UK	ERST20D-MECCR2.UK	EHST20D-VM2C2R2.UK	EHP20X-VM2C2R2.UK	ERST20D-VM2C2R2.UK	Remarks [Drawing No.]
1	S70 C18 641	TOP PANEL ASSY	1					1	1	1	1	1		1	INCLUDES PIPE LOCATION LABEL & BUSH
1	S70 C19 641	TOP PANEL ASSY		1	1	1	1						1		
2	S70 30L 655	HANDLE	2	2	2	2	2	2	2	2	2	2	2	2	
3	S70 C19 661	BACK PANEL	1	1	1	1	1	1	1	1	1	1	1	1	
4	S70 C40 662	SIDE PANEL L	1	1	1	1	1					1	1		
4	S70 C50 662	SIDE PANEL L						1	1	1	1			1	INSULATION EQUIPPED
5	S70 C22 668	FRONT PANEL	1	1	1	1	1	1	1	1	1	1	1	1	
6	S70 C31 710	MAIN REMOTE CONTROLLER HOLDER	1	1	1	1	1	1	1	1	1	1	1	1	
7	S70 C85 200	MAIN REMOTE CONTROLLER ASSY	1	1	1	1	1	1	1	1	1	1	1	1	
8	S70 C25 699	BRAND LABEL	1	1	1	1	1	1	1	1	1	1	1	1	
9	S70 C30 699	LEAF LABEL	1	1	1	1	1	1	1	1	1	1	1	1	
10	—	MAIN REMOTE CONTROLLER SUPPORT	1	1	1	1	1	1	1	1	1	1	1	1	[BK00R897G01]
11	S70 C10 662	SIDE PANEL R	1	1	1	1	1	1	1	1	1	1	1	1	
⑫	S70 C13 699	WIRING DIAGRAM FOR FRONT PANEL		1				1		1					2 kW
⑫	S70 C14 699	WIRING DIAGRAM FOR FRONT PANEL			1										6 kW
⑫	S70 C15 699	WIRING DIAGRAM FOR FRONT PANEL				1									9 kW(Y)
⑫	S70 C16 699	WIRING DIAGRAM FOR FRONT PANEL					1								9 kW(T)
⑫	S70 C17 699	WIRING DIAGRAM FOR FRONT PANEL	1						1		1				0 kW
⑫	S70 C19 699	WIRING DIAGRAM FOR FRONT PANEL										1	1	1	2 kW

EHST20C-MHCW.UK
EHST20C-MHCWR1.UK
EHST20C-MHCWR2.UK

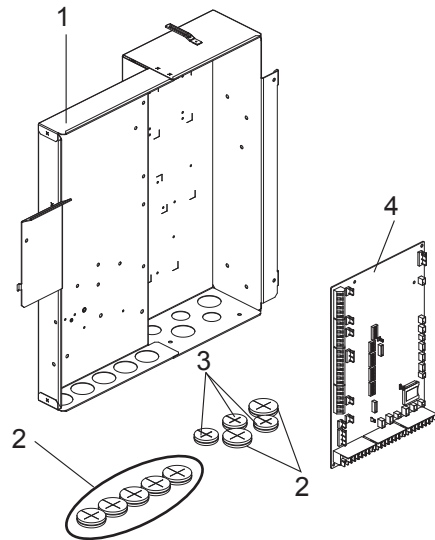
EHST20D-MHCW.UK
EHST20D-MHCWR1.UK
EHST20D-MHCWR2.UK

EHPT20X-MHCW.UK
EHPT20X-MHCWR1.UK
EHPT20X-MHCWR2.UK



1. The part quantity below indicates the required number of pieces per unit.
2. The circled No. indicates that the part is not shown in the figure.

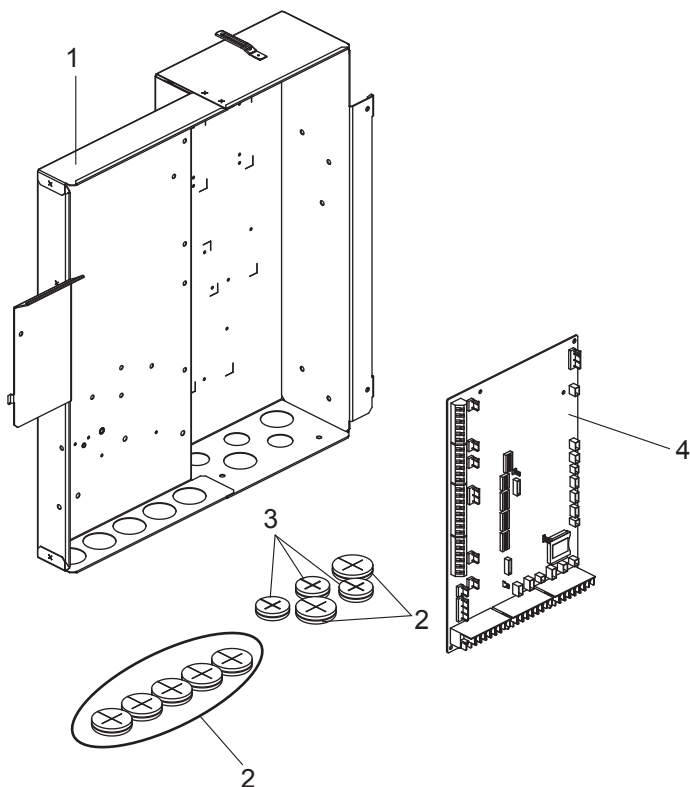
No.	Parts No.	Parts name										Remarks [Drawing No.]			
			EHST20C-MHCW.UK	EHST20C-MHCWR1.UK	EHST20C-MHCWR2.UK	EHST20D-MHCW.UK	EHST20D-MHCWR1.UK	EHST20D-MHCWR2.UK	EHPT20X-MHCW.UK	EHPT20X-MHCWR1.UK	EHPT20X-MHCWR2.UK				
1	S 70 C 11 641	TOP PANEL ASSY	1	1		1	1								INCLUDES PIPE LOCATION LABEL & BUSH
1	S 70 C 12 641	TOP PANEL ASSY							1	1					
1	S 70 C 20 641	TOP PANEL ASSY			1			1							
1	S 70 C 21 641	TOP PANEL ASSY										1			
2	S 70 30 L 655	HANDLE	2	2	2	2	2	2	2	2	2	2	2	2	
3	S 70 C 19 661	BACK PANEL	1	1	1	1	1	1	1	1	1	1	1	1	
4	S 70 C 20 662	SIDE PANEL L	1	1		1	1		1	1					
4	S 70 C 40 662	SIDE PANEL L			1			1				1			
5	S 70 C 21 668	FRONT PANEL	1	1		1	1		1	1					
5	S 70 C 22 668	FRONT PANEL			1			1				1			
6	S 70 C 21 710	MAIN REMOTE CONTROLLER HOLDER	1	1		1	1		1	1					
6	S 70 C 31 710	MAIN REMOTE CONTROLLER HOLDER			1			1					1		
7	S 70 C 85 200	MAIN REMOTE CONTROLLER ASSY	1	1	1	1	1	1	1	1	1	1	1	1	
8	S 70 C 25 699	BRAND LABEL	1	1	1	1	1	1	1	1	1	1	1	1	
9	S 70 C 30 699	LEAF LABEL	1	1	1	1	1	1	1	1	1	1	1	1	
10	—	MAIN REMOTE CONTROLLER SUPPORT	1	1	1	1	1	1	1	1	1	1	1	1	[BK00R897G01]
11	S 70 C 09 662	SIDE PANEL R	1	1		1	1		1	1					
11	S 70 C 11 662	SIDE PANEL R			1			1				1			
12	S 70 C 30 670	V/M PLATE	1	1		1	1		1	1					
12	S 70 C 40 670	V/M PLATE			1			1				1			
13	S 70 C 06 699	WIRING DIAGRAM FOR FRONT PANEL	1			1			1						
13	S 70 C 12 699	WIRING DIAGRAM FOR FRONT PANEL		1				1			1				
13	S 70 C 18 699	WIRING DIAGRAM FOR FRONT PANEL			1			1					1		



1. The part quantity below indicates the required number of pieces per unit.
 2. The circled No. indicates that the part is not shown in the figure.

No.	Parts No.	Parts name	EHST20C-VM2C.UK	EHST20C-VM2EC.UK	EHST20D-VM2C.UK	EHPT20X-VM2C.UK	EHST20C-VM2CR1.UK	EHST20C-VM2ECR1.UK	EHST20D-VM2CR1.UK	EHPT20X-VM2CR1.UK	EHST20C-VM6C.UK	EHST20C-VM6EC.UK	EHPT20X-VM6C.UK	EHST20C-VM6CR1.UK	EHST20C-VM6ECR1.UK	EHPT20X-VM6CR1.UK	EHST20C-YM9C.UK	EHST20C-TM9C.UK	EHST20C-YM9EC.UK	EHPT20X-YM9C.UK	EHPT20X-TM9C.UK	EHST20C-YM9CR1.UK	EHST20C-TM9CR1.UK	EHST20C-YM9ECR1.UK	EHPT20X-YM9CR1.UK	EHPT20X-TM9CR1.UK	EHST20C-MEC.UK	EHST20D-MEC.UK	EHST20C-MECR1.UK	EHST20D-MECR1.UK	EHST20C-MHCW.UK	EHST20D-MHCW.UK	EHST20D-MHC.UK	EHPT20X-MHCW.UK	EHST20C-MHCWR1.UK	EHST20D-MHCWR1.UK	EHST20D-MHCR1.UK	EHPT20X-MHCWR1.UK	Wiring diagram symbol	Remarks [Drawing No.]					
			1	1																																									
1	—	CONTROL BOX					1	1																																				[BK00N479G11]	
1	—	CONTROL BOX									1	1																																	[BK00N479G12]
1	—	CONTROL BOX															1	1																										[BK00N479G13]	
1	—	CONTROL BOX																									1	1																[BK00N479G14]	
1	—	CONTROL BOX																																1	1								[BK00N479G15]		
2	S70 C21 306	BUSH	12	12	12	12	12	12	12	12	12	12	12	12	12	12	12	12	12	12	12	12	12	12	12	12	12	12	12	12	12	12	12	12	12	12	12	12	12	12	12	12	12	FOR CABLE	
3	S70 C11 306	BUSH	3	3	3	3	3	3	3	3	3	3	3	3	3	3	3	3	3	3	3	3	3	3	3	3	3	3	3	3	3	3	3	3	3	3	3	3	3	3	3	3	3	FOR CABLE	
4	S70 C50 315	ATW CONTROLLER	1								1						1											1																FTC5	
4	S70 C80 315	ATW CONTROLLER					1							1																														FTC5	

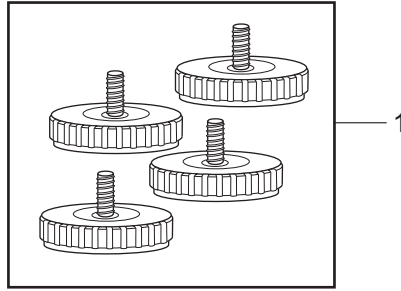
No.	Parts No.	Parts name	EHST20C-VM2CR2.UK	EHST20C-VM2ECR2.UK	EHST20D-VM2CR2.UK	EHPT20X-VM2CR2.UK	EHST20D-VM2C2R2.UK	EHPT20X-VM2C2R2.UK	EHST20C-VM6CR2.UK	EHST20C-VM6ECR2.UK	EHPT20X-VM6CR2.UK	EHST20C-VM9CR2.UK	EHST20C-TM9CR2.UK	EHST20C-YM9ECR2.UK	EHPT20X-YM9CR2.UK	EHPT20X-TM9CR2.UK	EHST20C-MECR2.UK	EHST20D-MECR2.UK	EHST20C-MHCWR2.UK	EHST20D-MHCWR2.UK	EHST20D-MHCR2.UK	EHPT20X-MHCWR2.UK	Wiring diagram symbol	Remarks [Drawing No.]	
			1	1	1	1	1	1	1	1	1	1	1	1	1	1	1	1	1	1	1	1			1
1	—	CONTROL BOX	1																						[BK00N479G16]
1	—	CONTROL BOX							1																[BK00N479G17]
1	—	CONTROL BOX											1												[BK00N479G18]
1	—	CONTROL BOX															1								[BK00N479G19]
1	—	CONTROL BOX																				1			[BK00N479G20]
2	S70 C21 306	BUSH	12	12	12	12	12	12	12	12	12	12	12	12	12	12	12	12	12	12	12	12	12	12	FOR CABLE
3	S70 C11 306	BUSH	3	3	3	3	3	3	3	3	3	3	3	3	3	3	3	3	3	3	3	3	3	3	FOR CABLE
4	S70 C11 315	ATW CONTROLLER	1						1					1											FTC5



1. The part quantity below indicates the required number of pieces per unit.
2. The circled No. indicates that the part is not shown in the figure.

No.	Parts No.	Parts name	EHST20D-VM2EC.UK			EHST20D-VM9C.UK			Wiring diagram symbol	Remarks [Drawing No.]
			EHST20D-VM2EC.UK	ERST20C-VM2C.UK	ERST20D-VM2C.UK	EHST20D-VM2ECR1.UK	ERST20C-VM2CR1.UK	ERST20D-VM2CR1.UK		
1	—	CONTROL BOX	1	1					[BK00N479G11]	
1	—	CONTROL BOX				1	1		[BK00N479G13]	
1	—	CONTROL BOX						1	1	[BK00N479G14]
2	S70 C21 306	BUSH	12	12	12	12	12	12	12	FOR CABLE
3	S70 C11 306	BUSH	3	3	3	3	3	3	3	FOR CABLE
4	S70 C50 315	ATW CONTROLLER	1			1		1		FTC5
4	S70 C80 315	ATW CONTROLLER		1			1		1	FTC5

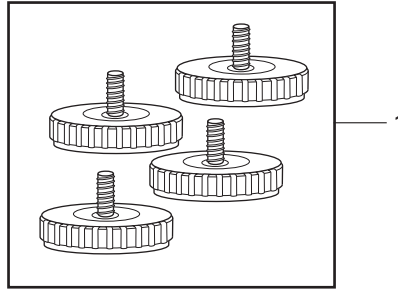
No.	Parts No.	Parts name	EHST20D-VM2ECR2.UK			Wiring diagram symbol	Remarks [Drawing No.]
			EHST20D-VM2ECR2.UK	ERST20C-VM2CR2.UK	ERST20D-VM2CR2.UK		
1	—	CONTROL BOX	1			[BK00N479G16]	
1	—	CONTROL BOX			1	[BK00N479G18]	
1	—	CONTROL BOX			1	[BK00N479G19]	
2	S70 C21 306	BUSH	12	12	12	FOR CABLE	
3	S70 C11 306	BUSH	3	3	3	FOR CABLE	
4	S70 C11 315	ATW CONTROLLER	1	1	1	FTC5	



1. The part quantity below indicates the required number of pieces per unit.
2. The circled No. indicates that the part is not shown in the figure.

No.	Parts No.	Parts name												Wiring diagram symbol	Remarks [Drawing No.]
			EHST20C-VM2C(R1).UK	EHST20C-VM6C(R1).UK	EHST20C-VM9C(R1).UK	EHST20C-TM9C(R1).UK	EHST20C-VM2EC(R1).UK	EHST20C-VM6EC(R1).UK	EHST20C-VM9EC(R1).UK	EHST20C-MHCW(R1).UK	EHST20C-MEC(R1).UK	ERST20C-VM2C(R1).UK	ERST20C-MEC(R1).UK		
1	S70 C40 097	ADJUST BOLT	4	4	4	4	4	4	4	4	4	4	4		ACCESSORY
②	S70 C15 202	THERMISTOR (TANK WATER TEMP)	1	1	1	1	1	1	1	1	1	1	1	THW5	
③	S70 C25 202	THERMISTOR (FLOW WATER TEMP & RETURN WATER TEMP)	1	1	1	1	1	1	1	1	1	1	1	THW1/2	
④	S70 C35 202	THERMISTOR (LIQUID REFRIGERANT TEMP)	1	1	1	1	1	1	1	1	1	1	1	TH2	
⑤	S70 C55 460	GASKET G1"	8	8	8	8	8	8	8	6	8	8	8	G1" FOR CONNECTION OF WATER CIRCUIT	
⑥	S70 C66 460	GASKET G3/4"	8	8	8	8	8	8	8	2	8	8	8	G3/4" FOR CONNECTION OF WATER CIRCUIT	
⑦	S70 C77 460	GASKET G3/8"	1	1	1	1				1		1		G3/8" FOR ONLY EXPANSION VESSEL	
⑧	S70 C88 460	GASKET G1/4"	1	1	1	1	1	1	1	1	1	1	1	G1/4"/ FOR ONLY MANOMETER	
⑨	S70 C24 460	PACKING WASHER 1"								2				1"/ FOR SANITARY SIDE	
⑩	S70 C25 460	PACKING WASHER 3/4"								6				3/4"/ FOR SANITARY SIDE	
⑪	—	PIPE COVER 19	√	√	√	√	√	√	√	√	√	√	√	ID19*OD44*L1200 [BH33T353U02] FOR REFRIGERANT (GAS) PIPE	
⑫	—	PIPE COVER 25	√	√	√	√	√	√	√	√	√	√	√	ID25*OD51*L900 [BH33T353K06] FOR WATER PIPE	
⑬	—	PIPE COVER 80	√	√	√	√	√	√	√	√	√	√	√	ID79.4*OD100*L220 [BH33T353U60] FOR SCALE TRAP	
⑭	—	PIPE COVER ELBOW	√	√	√	√	√	√	√	√	√	√	√	[BH33T353L01] FOR ELBOW PIPE BESIDE TANK	

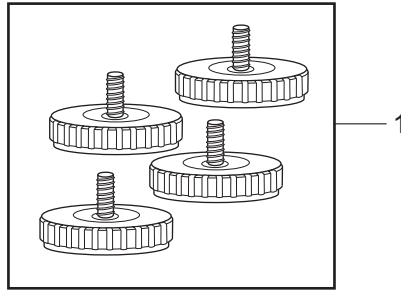
Do not reuse the gaskets (No.5 to 10) that were once removed, but be sure to replace with a new one.



1. The part quantity below indicates the required number of pieces per unit.
2. The circled No. indicates that the part is not shown in the figure.

No.	Parts No.	Parts name														Wiring diagram symbol	Remarks [Drawing No.]
			EHST20D-VM2C(R1).UK	EHST20D-VM2EC(R1).UK	EHST20D-YM9C(R1).UK	EHST20D-MHCW(R1).UK	EHST20D-MEC(R1).UK	EHST20D-MHC(R1).UK	EHPT20X-VM2C(R1).UK	EHPT20X-VM6C(R1).UK	EHPT20X-YM9C(R1).UK	EHPT20X-TM9C(R1).UK	EHPT20X-MHCW(R1).UK	ERST20D-VM2C(R1).UK	ERST20D-MEC(R1).UK		
1	S70 C40 097	ADJUST BOLT	4	4	4	4	4	4	4	4	4	4	4	4	4		ACCESSORY
②	S70 C15 202	THERMISTOR (TANK WATER TEMP)	1	1	1	1	1	1	1	1	1	1	1	1	1	THW5	
③	S70 C25 202	THERMISTOR (FLOW WATER TEMP & RETURN WATER TEMP)	1	1	1	1	1	1	1	1	1	1	1	1	1	THW1/2	
④	S70 C35 202	THERMISTOR (LIQUID REFRIGERANT TEMP)	1	1	1	1	1	1					1	1	TH2		
⑤	S70 C55 460	GASKET G1"	8	8	8	6	8	8	8	8	8	8	6	8	8	G1" FOR CONNECTION OF WATER CIRCUIT	
⑥	S70 C66 460	GASKET G3/4"	8	8	8	2	8	8	8	8	8	8	2	8	8	G3/4" FOR CONNECTION OF WATER CIRCUIT	
⑦	S70 C77 460	GASKET G3/8"	1		1	1		1	1	1	1	1	1	1		G3/8" FOR ONLY EXPANSION VESSEL	
⑧	S70 C88 460	GASKET G1/4"	1	1	1	1	1	1	1	1	1	1	1	1	1	G1/4"/ FOR ONLY MANOMETER	
⑨	S70 C24 460	PACKING WASHER 1"				2							2			1"/ FOR SANITARY SIDE	
⑩	S70 C25 460	PACKING WASHER 3/4"				6							6			3/4"/ FOR SANITARY SIDE	
⑪	—	PIPE COVER 10	√	√	√	√	√	√						√	√	ID10*OD35*L1050 [BH33T353R11] FOR REFRIGERANT (LIQUID) PIPE	
⑫	—	PIPE COVER 13	√	√	√	√	√	√						√	√	ID13*OD38*L1020 [BH33T353U50] FOR REFRIGERANT (GAS) PIPE	
⑬	—	PIPE COVER 25	√	√	√	√	√	√	√	√	√	√	√	√	√	ID25*OD51*L900 [BH33T353K06] FOR WATER PIPE	
⑭	—	PIPE COVER 80	√	√	√	√	√	√	√	√	√	√	√	√	√	ID79.4*OD100*L220 [BH33T353U60] FOR SCALE TRAP	
⑮	—	PIPE COVER ELBOW	√	√	√	√	√	√	√	√	√	√	√	√	√	[BH33T353L01] FOR ELBOW PIPE BESIDE TANK	

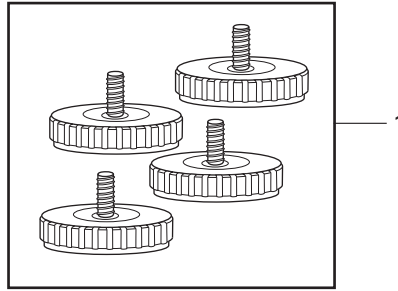
Do not reuse the gaskets (No.5 to 10) that were once removed, but be sure to replace with a new one.



1. The part quantity below indicates the required number of pieces per unit.
 2. The circled No. indicates that the part is not shown in the figure.

No.	Parts No.	Parts name												Wiring diagram symbol	Remarks [Drawing No.]
			EHST20C-VM2CR2.UK	EHST20C-VM6CR2.UK	EHST20C-YM9CR2.UK	EHST20C-TM9CR2.UK	EHST20C-VM2ECR2.UK	EHST20C-VM6ECR2.UK	EHST20C-YM9ECR2.UK	EHST20C-MHCWR2.UK	EHST20C-MECR2.UK	ERST20C-VM2CR2.UK	ERST20C-MECR2.UK		
1	S70 C40 097	ADJUST BOLT	4	4	4	4	4	4	4	4	4	4	4		ACCESSORY
②	S70 C15 202	THERMISTOR (TANK WATER TEMP)	1	1	1	1	1	1	1	1	1	1	1	THW5	
③	S70 C25 202	THERMISTOR (FLOW WATER TEMP & RETURN WATER TEMP)	1	1	1	1	1	1	1	1	1	1	1	THW1/2	
④	S70 C35 202	THERMISTOR (LIQUID REFRIGERANT TEMP)	1	1	1	1	1	1	1	1	1	1	1	TH2	
⑤	S70 C55 460	GASKET G1"	8	8	8	8	8	8	8	6	8	8	8	G1" FOR CONNECTION OF WATER CIRCUIT	
⑥	S70 C66 460	GASKET G3/4"	8	8	8	8	8	8	8	2	8	8	8	G3/4" FOR CONNECTION OF WATER CIRCUIT	
⑦	S70 C77 460	GASKET G3/8"	1	1	1	1				1		1		G3/8" FOR ONLY EXPANSION VESSEL	
⑧	S70 C88 460	GASKET G1/4"	1	1	1	1	1	1	1	1	1	1	1	G1/4"/ FOR ONLY MANOMETER	
⑨	S70 C24 460	PACKING WASHER 1"								2				1"/ FOR SANITARY SIDE	
⑩	S70 C25 460	PACKING WASHER 3/4"								6				3/4"/ FOR SANITARY SIDE	
⑪	—	PIPE COVER 19	√	√	√	√	√	√	√	√	√	√	√	ID19*OD44*L1200 [BH33T353U02] FOR REFRIGERANT (GAS) PIPE	
⑫	—	PIPE COVER 25	√	√	√	√	√	√	√	√	√	√	√	ID25*OD51*L900 [BH33T353K06] FOR WATER PIPE	
⑬	—	PIPE COVER 80	√	√	√	√	√	√	√	√	√	√	√	ID79.4* OD100*L220 [BH33T353U60] FOR SCALE TRAP	
⑭	—	PIPE COVER ELBOW	√	√	√	√	√	√	√	√	√	√	√	[BH33T353L01] FOR ELBOW PIPE BESIDE TANK	

Do not reuse the gaskets (No.5 to 10) that were once removed, but be sure to replace with a new one.



1. The part quantity below indicates the required number of pieces per unit.
2. The circled No. indicates that the part is not shown in the figure.

No.	Parts name	EHST20D-VM2C(2)R2.UK	EHST20D-VM2ECR2.UK	EHST20D-YM9CR2.UK	EHST20D-MHCWR2.UK	EHST20D-MECCR2.UK	EHST20D-MHCCR2.UK	EHPT20X-VM2C(2)R2.UK	EHPT20X-VM6CR2.UK	EHPT20X-YM9CR2.UK	EHPT20X-TM9CR2.UK	EHPT20X-MHCWR2.UK	ERST20D-VM2C(2)R2.UK	ERST20D-MECCR2.UK	Wiring diagram symbol	Remarks [Drawing No.]
1	ADJUST BOLT	4	4	4	4	4	4	4	4	4	4	4	4	4		ACCESSORY
②	THERMISTOR (TANK WATER TEMP)	1	1	1	1	1	1	1	1	1	1	1	1	1	THW5	
③	THERMISTOR (FLOW WATER TEMP & RETURN WATER TEMP)	1	1	1	1	1	1	1	1	1	1	1	1	1	THW1/2	
④	THERMISTOR (LIQUID REFRIGERANT TEMP)	1	1	1	1	1	1						1	1	TH2	
⑤	GASKET G1"	8	8	8	6	8	8	8	8	8	8	6	8	8		G1" FOR CONNECTION OF WATER CIRCUIT
⑥	GASKET G3/4"	8	8	8	2	8	8	8	8	8	8	2	8	8		G3/4" FOR CONNECTION OF WATER CIRCUIT
⑦	GASKET G3/8"	1		1	1		1	1	1	1	1	1	1			G3/8" FOR ONLY EXPANSION VESSEL
⑧	GASKET G1/4"	1	1	1	1	1	1	1	1	1	1	1	1	1		G1/4"/ FOR ONLY MANOMETER
⑨	PACKING WASHER 1"				2								2			1"/ FOR SANITARY SIDE
⑩	PACKING WASHER 3/4"				6								6			3/4"/ FOR SANITARY SIDE
⑪	PIPE COVER 10	√	√	√	√	√	√						√	√		ID10*OD35*L1050 [BH33T353R11] FOR REFRIGERANT (LIQUID) PIPE
⑫	PIPE COVER 13	√	√	√	√	√	√						√	√		ID13*OD38*L1020 [BH33T353U50] FOR REFRIGERANT (GAS) PIPE
⑬	PIPE COVER 25	√	√	√	√	√	√	√	√	√	√	√	√	√		ID25*OD51*L900 [BH33T353K06] FOR WATER PIPE
⑭	PIPE COVER 80	√	√	√	√	√	√	√	√	√	√	√	√	√		ID79.4*OD100*L220 [BH33T353U60] FOR SCALE TRAP
⑮	PIPE COVER ELBOW	√	√	√	√	√	√	√	√	√	√	√	√	√		[BH33T353L01] FOR ELBOW PIPE BESIDE TANK

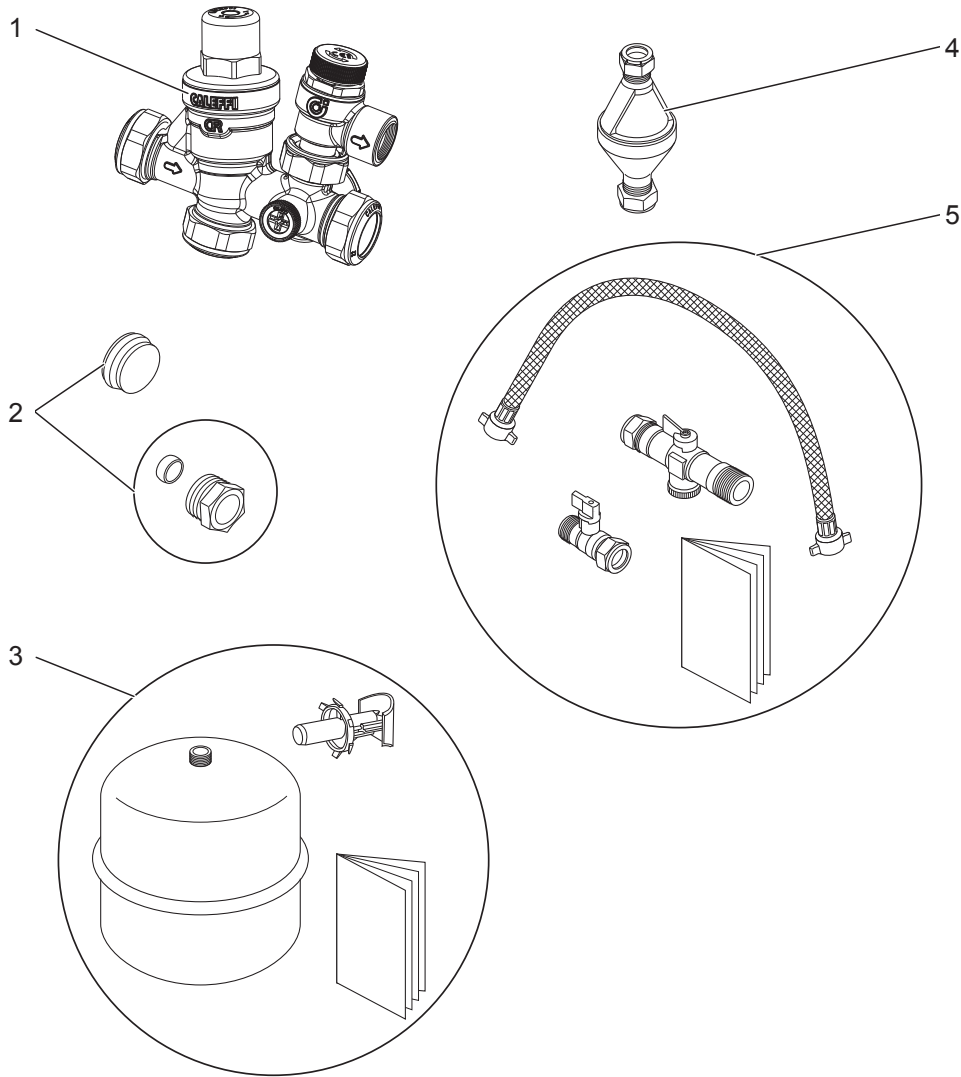
Do not reuse the gaskets (No.5 to 10) that were once removed, but be sure to replace with a new one.

2

OPTIONAL PARTS

2-1. EHPT ACCESSORIES for UK * Optional parts for EH*T20*-MHCW

Part No.	PAC-WK01UK-E
----------	--------------



1. The part quantity below indicates the required number of pieces per unit.
2. The circled No. indicates that the part is not shown in the figure.

No.	Parts No.	Parts name										Remarks [Drawing No.]	
			EHST20C-MHCW.UK	EHST20D-MHCW.UK	EHPT20X-MHCW.UK	EHST20C-MHCWR1.UK	EHST20D-MHCWR1.UK	EHPT20X-MHCWR1.UK	EHST20C-MHCWR2.UK	EHST20D-MHCWR2.UK	EHPT20X-MHCWR2.UK		
1	S 70 C 10 359	Unvented inlet control group (Pressure-reducing valve/Strainer/Check valves/ Expansion relief valve)	1	1	1	1	1	1	1	1	1	1	Pressure reducing valve:3.5 bar Expansion relief valve:6.0 bar
2	S 70 C 01 460	Accessory pack :Blanking cap, Olive & compression nut	1	1	1	1	1	1	1	1	1	1	22 mm, 15 mm
3	S 70 C 20 402	Expansion vessel 18L	1	1	1	1	1	1	1	1	1	1	R3/4"
4	S 70 C 02 460	Tundish	2	2	2	2	2	2	2	2	2	2	15 mm, 22 mm
5	S 70 C 03 460	Filling loop	1	1	1	1	1	1	1	1	1	1	15 mm

2-2. IMMERSION HEATER (1Ph 3kW)

Part No.	PAC-IH03V2-E
----------	--------------

2-3. WIRELESS REMOTE CONTROLLER

Part No.	PAR-WT50R-E
----------	-------------

2-4. WIRELESS RECEIVER

Part No.	PAR-WR51R-E
----------	-------------

2-5. REMOTE SENSOR

Part No.	PAC-SE41TS-E
----------	--------------

2-6. THERMISTOR

Part No.	PAC-TH011-E
----------	-------------

2-7. HIGH TEMPERATURE THERMISTOR

Part No.	PAC-TH011HT-E
----------	---------------

2-8. ecodan Wi-Fi INTERFACE

Part No.	PAC-WF010-E
----------	-------------

2-9. DRAIN PAN STAND

Part No.	PAC-DP01-E
----------	------------

* Optional part for ERST series.

2-10. 2-ZONE KIT

Part No.	PAC-TZ01-E
----------	------------

MITSUBISHI ELECTRIC CORPORATION

HEAD OFFICE: TOKYO BUILDING, 2-7-3, MARUNOUCHI, CHIYODA-KU, TOKYO 100-8310, JAPAN

©Copyright 2014 MITSUBISHI ELECTRIC CORPORATION

Issued: Dec. 2019 No.OCB570 REVISED EDITION-H

Issued: Jul. 2019 No.OCB570 REVISED EDITION-G

Issued: Sep. 2017 No.OCB570 REVISED EDITION-F

Issued: Apr. 2017 No.OCB570 REVISED EDITION-E

Issued: Sep. 2016 No.OCB570 REVISED EDITION-D

Issued: Oct. 2015 No.OCB570 REVISED EDITION-C

Issued: Aug. 2015 No.OCB570 REVISED EDITION-B

Issued: Apr. 2015 No.OCB570 REVISED EDITION-A

Published: Dec. 2014 No.OCB570

Made in Japan

Specifications are subject to change without notice.