

# PARTS CATALOG R410A

**<Outdoor unit>**
**[Model Name]**  
 PUAZ-W60VAA

**[Service Ref.]**
**PUAZ-W60VAA.UK**

PUAZ-W85VAA

**PUAZ-W85VAA.UK**

PUAZ-W112VAA

**PUAZ-W112VAA.UK**

PUAZ-W85YAA

**PUAZ-W85YAA.UK**

PUAZ-W112YAA

**PUAZ-W112YAA.UK**
**Salt proof model**

PUAZ-W60VAA-BS

**PUAZ-W60VAA-BS.UK**

PUAZ-W85VAA-BS

**PUAZ-W85VAA-BS.UK**

PUAZ-W112VAA-BS

**PUAZ-W112VAA-BS.UK**

PUAZ-W85YAA-BS

**PUAZ-W85YAA-BS.UK**

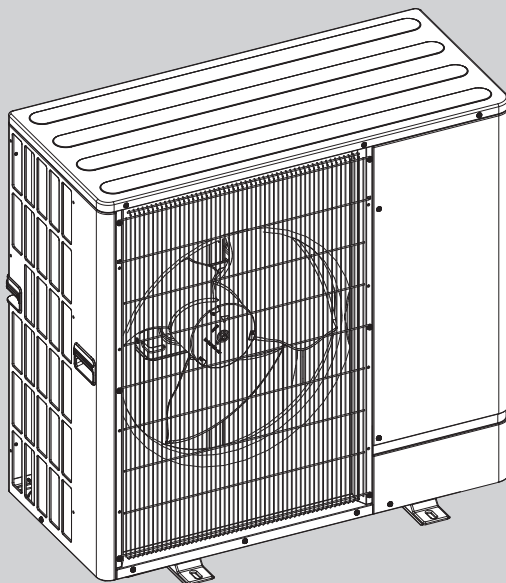
PUAZ-W112YAA-BS

**PUAZ-W112YAA-BS.UK**

## Revision:

- Some descriptions have been modified in REVISED EDITION-B.

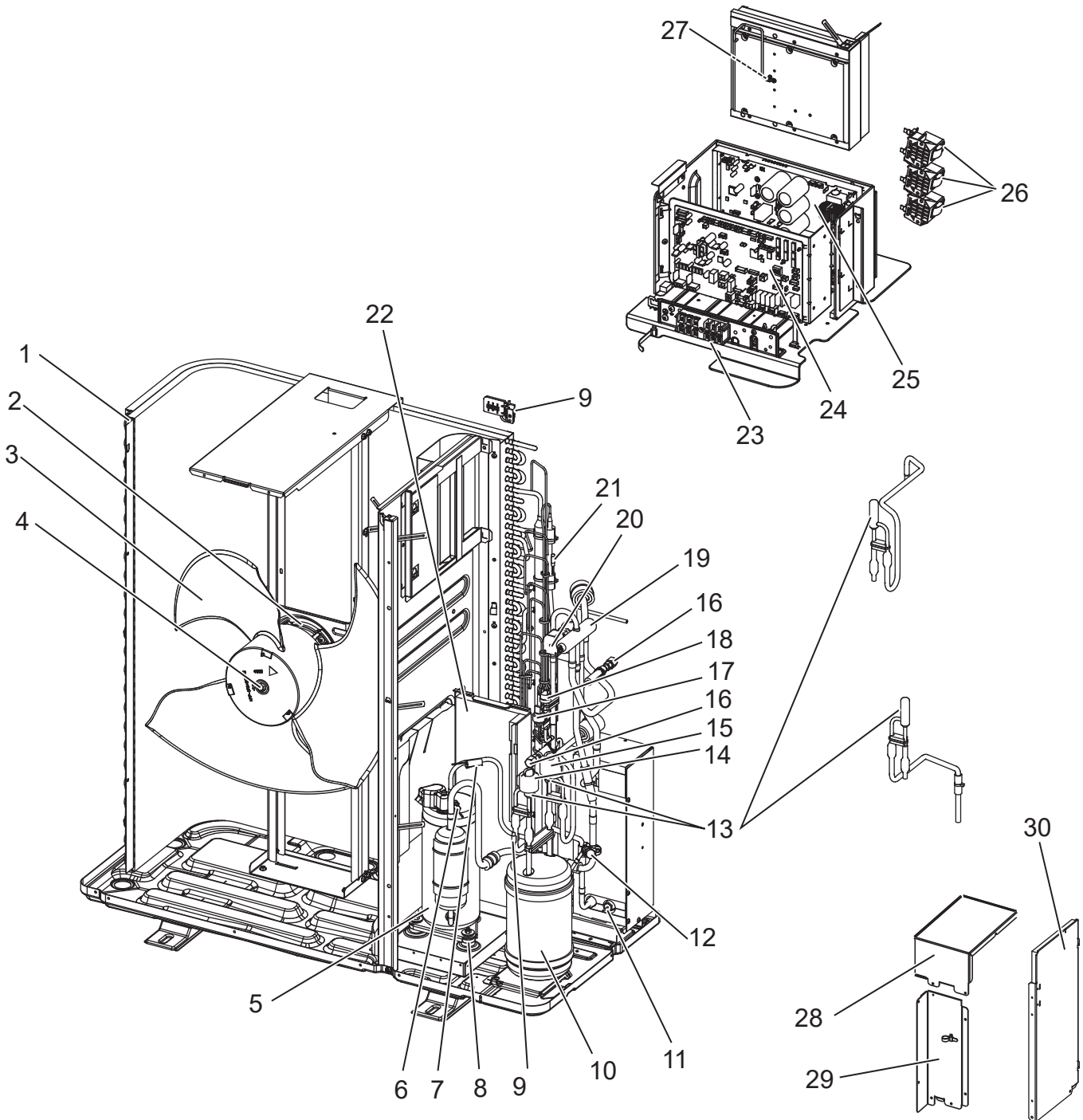
OCB681 REVISED EDITION-A is void.


**CONTENTS**

1. SERVICE PARTS LIST.....2
2. OPTIONAL PARTS..... 14

SERVICE MANUAL (OCH681)

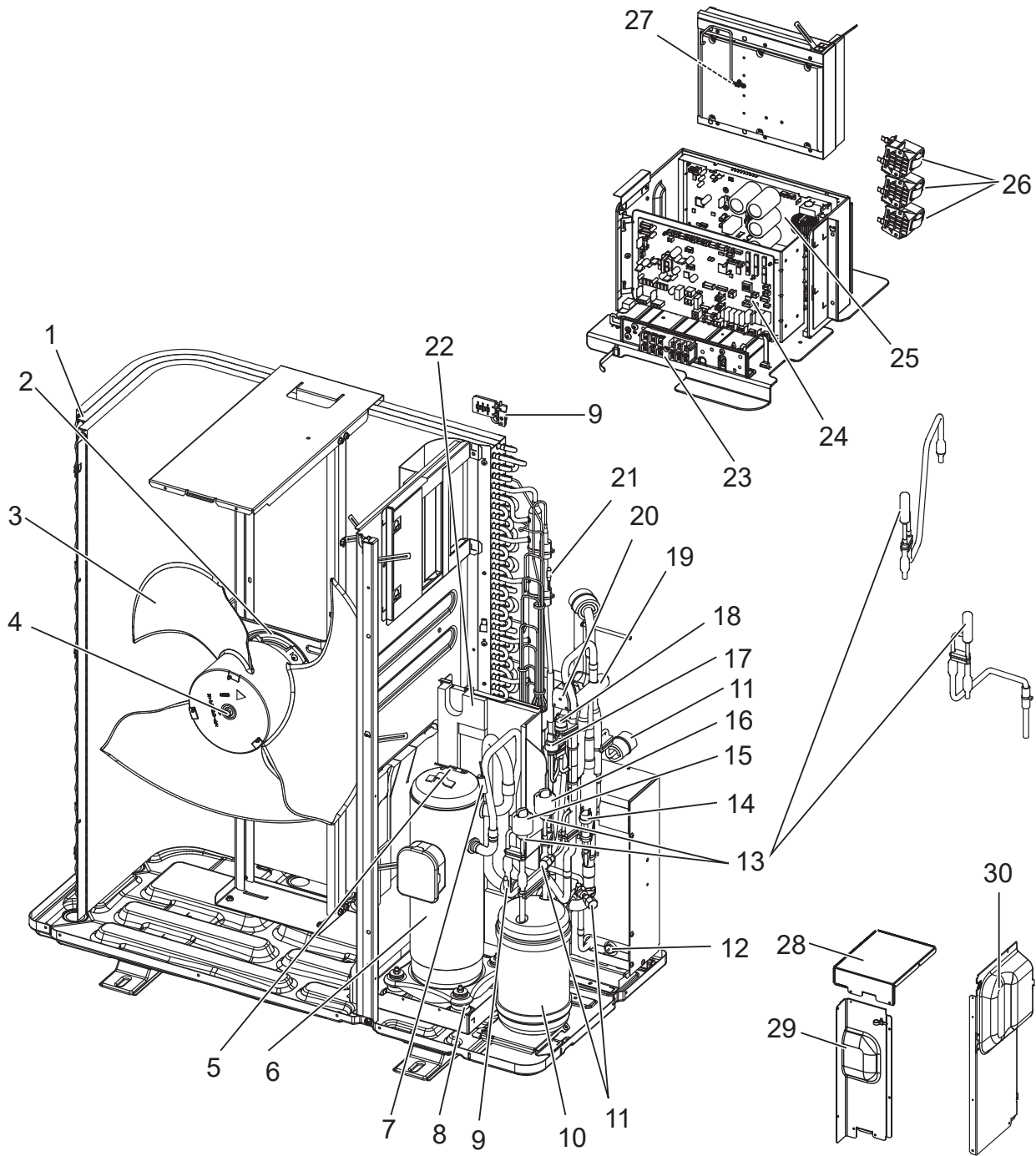
**FUNCTIONAL AND ELECTRICAL PARTS**  
**PUHZ-W60VAA.UK**  
**PUHZ-W60VAA-BS.UK**  
**PUHZ-W85VAA.UK**  
**PUHZ-W85VAA-BS.UK**





No.	Parts No.	Parts Name	Specification	Q'ty/unit				Remarks (Drawing No.)	Wiring Diagram Symbol
				PUHZ-W60VAA.UK	PUHZ-W60VAA-BS.UK	PUHZ-W85VAA.UK	PUHZ-W85VAA-BS.UK		
1	S70 E43 408H	HEAT EXCHANGER		1	1	1	1		
2	S70 E95 763	FAN MOTOR		1	1	1	1		MF1
3	S70 E50 115	PROPELLER FAN		1	1	1	1		
4	S70 K01 097	NUT		1	1	1	1		
5	S70 E37 400	COMPRESSOR	SNB220FEGMC-L1	1	1	1	1		MC
6	S70 E73 202	THERMISTOR (COMP. SURFACE)		1	1	1	1		TH33
7	S70 E77 202	THERMISTOR (DISCHARGE)		1	1	1	1		TH4
8	S70 E03 004	RUBBER MOUNT		3	3	3	3		
9	S70 E81 202	THERMISTOR-W (PLATE HEX LIQUID, AMBIENT)	1150/1150	1	1	1	1		TH6/7
10	S70 E20 440	RECEIVER		1	1	1	1		
11	S70 E80 202	THERMISTOR (WATER TEMP)		1	1	1	1		TH34
12	S70 E04 413	CHARGE PLUG		1	1	1	1		
13	S70 E80 401	EXPANSION VALVE	UKV-18D35	2	2	2	2		
14	S70 E87 402	LINEAR EXPANSION VALVE COIL	UKV-A211	1	1	1	1		LEV-B
15	S70 E88 402	LINEAR EXPANSION VALVE COIL	UKV-A212	1	1	1	1		LEV-A
16	S70 E05 413	CHARGE PLUG		2	2	2	2		
17	S70 E11 208H	HIGH PRESSURE SENSOR		1	1	1	1		63HS
18	S70 E10 208H	HIGH PRESSURE SWITCH	OFF 4.14MPA	1	1	1	1		63H
19	S70 E04 403	REVERSING VALVE		1	1	1	1		
20	S70 E15 242	SOLENOID COIL <4WAY COIL>		1	1	1	1		21S4
21	S70 E47 202	THERMISTOR-H (LIQUID)	1050 XAP	1	1	1	1		TH3
22	S70 E06 005	COMP CASE BACK		1	1	1	1		
23	S70 E11 716	TERMINAL BLOCK	6P(L,N,E + S1,S2,S3)	1	1	1	1		TB1
24	S70 E27 315	CONTROLLER CIRCUIT BOARD		1	1				C.B.
	S70 E26 315	CONTROLLER CIRCUIT BOARD				1	1		C.B.
25	S70 E50 313	POWER CIRCUIT BOARD		1	1	1	1		P.B.
26	S70 K95 259	REACTOR	18mH	3	3	3	3		DCL1,2,3
27	S70 E76 202	THERMISTOR (HEAT SINK)		1	1	1	1		TH8
28	S70 E06 008	COMP CASE TOP		1	1	1	1		
29	S70 E06 006H	COMP CASE FRONT		1	1	1	1		
30	S70 E06 007	COMP CASE SIDE		1	1	1	1		

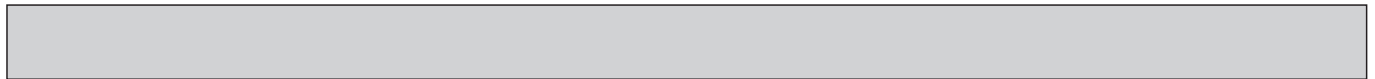
**FUNCTIONAL AND ELECTRICAL PARTS**  
**PUHZ-W112VAA.UK**  
**PUHZ-W112VAA-BS.UK**





No.	Parts No.	Parts Name	Specification	Q'ty/unit		Remarks (Drawing No.)	Wiring Diagram Symbol
				PUHZ-W112VAA.UK	PUHZ-W112VAA-BS.UK		
1	S70 E42 408H	HEAT EXCHANGER		1	1		
2	S70 E96 763	FAN MOTOR		1	1		MF1
3	S70 E50 115	PROPELLER FAN		1	1		
4	S70 K01 097	NUT		1	1		
5	S70 E74 202	THERMISTOR (COMP. SURFACE)		1	1		TH33
6	S70 E39 400	COMPRESSOR	DNB28FBAMT	1	1		MC
7	S70 E78 202	THERMISTOR (DISCHARGE)		1	1		TH4
8	S70 E04 004	RUBBER MOUNT		4	4		
9	S70 E81 202	THERMISTOR-W (PLATE HEX LIQUID, AMBIENT)	1150/1150	1	1		TH6/7
10	S70 E20 440	RECEIVER		1	1		
11	S70 E04 413	CHARGE PLUG		3	3		
12	S70 E80 202	THERMISTOR (WATER TEMP)		1	1		TH34
13	S70 E96 401	EXPANSION VALVE	UKV-25D251	2	2		
14	S70 H20 209	LOW PRESSURE SWITCH		1	1		63L
15	S70 E87 402	LINEAR EXPANSION VALVE COIL	UKV-A211	1	1		LEV-B
16	S70 E88 402	LINEAR EXPANSION VALVE COIL	UKV-A212	1	1		LEV-A
17	S70 E11 208H	HIGH PRESSURE SENSOR		1	1		63HS
18	S70 E10 208H	HIGH PRESSURE SWITCH	OFF 4.14MPA	1	1		63H
19	S70 E08 403	REVERSING VALVE		1	1		
20	S70 E20 242	SOLENOID COIL <4WAY COIL>		1	1		21S4
21	S70 E47 202	THERMISTOR-H (LIQUID)	1050 XAP	1	1		TH3
22	S70 E07 005	COMP CASE BACK		1	1		
23	S70 E11 716	TERMINAL BLOCK	6P(L,N,E + S1,S2,S3)	1	1		TB1
24	S70 E26 315	CONTROLLER CIRCUIT BOARD		1	1		C.B.
25	S70 E51 313	POWER CIRCUIT BOARD		1	1		P.B.
26	S70 K95 259	REACTOR	18mH	3	3		DCL1,2,3
27	S70 E76 202	THERMISTOR (HEAT SINK)		1	1		TH8
28	S70 E07 008	COMP CASE TOP		1	1		
29	S70 E07 006H	COMP CASE FRONT		1	1		
30	S70 E05 007	COMP CASE SIDE		1	1		

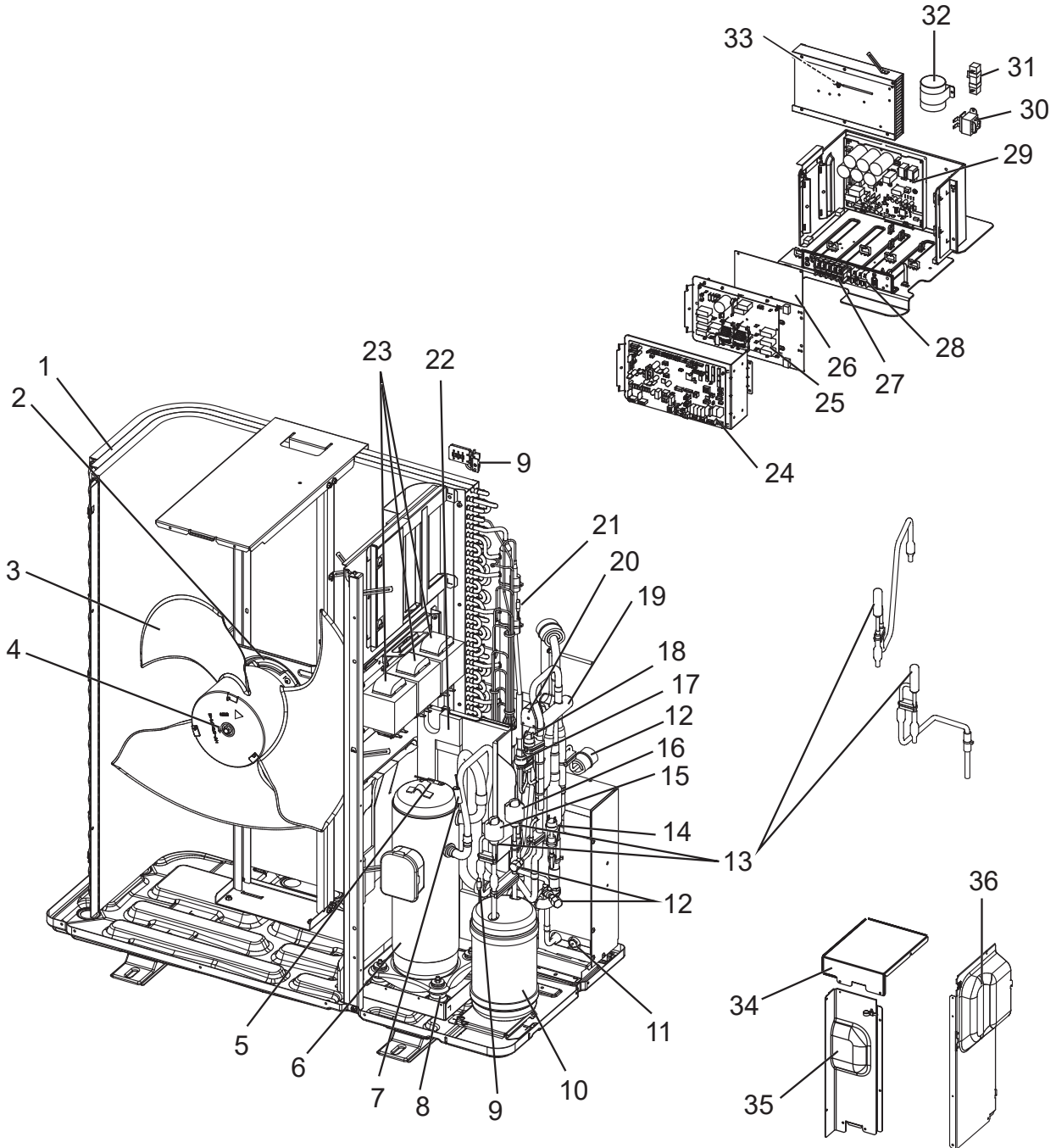




No.	Parts No.	Parts Name	Specification	Q'ty/unit		Remarks (Drawing No.)	Wiring Diagram Symbol
				PUHZ-W85YAA.UK	PUHZ-W85YAA-BS.UK		
1	S70 E43 408H	HEAT EXCHANGER		1	1		
2	S70 E95 763	FAN MOTOR		1	1		MF1
3	S70 E50 115	PROPELLER FAN		1	1		
4	S70 K01 097	NUT		1	1		
5	S70 E38 400	COMPRESSOR	SNB220FEAMC-L1	1	1		MC
6	S70 E73 202	THERMISTOR (COMP. SURFACE)		1	1		TH33
7	S70 E77 202	THERMISTOR (DISCHARGE)		1	1		TH4
8	S70 E03 004	RUBBER MOUNT		3	3		
9	S70 E81 202	THERMISTOR-W (PLATE HEX LIQUID, AMBIENT)	1150/1150	1	1		TH6/7
10	S70 E20 440	RECEIVER		1	1		
11	S70 E80 202	THERMISTOR (WATER TEMP)		1	1		TH34
12	S70 E04 413	CHARGE PLUG		1	1		
13	S70 E80 401	EXPANSION VALVE	UKV-18D35	2	2		
14	S70 E87 402	LINEAR EXPANSION VALVE COIL	UKV-A211	1	1		LEV-B
15	S70 E88 402	LINEAR EXPANSION VALVE COIL	UKV-A212	1	1		LEV-A
16	S70 E05 413	CHARGE PLUG		2	2		
17	S70 E11 208H	HIGH PRESSURE SENSOR		1	1		63HS
18	S70 E10 208H	HIGH PRESSURE SWITCH	OFF 4.14MPA	1	1		63H
19	S70 E04 403	REVERSING VALVE		1	1		
20	S70 E15 242	SOLENOID COIL <4WAY COIL>		1	1		21S4
21	S70 E47 202	THERMISTOR-H (LIQUID)	1050 XAP	1	1		TH3
22	S70 E06 005	COMP CASE BACK		1	1		
23	S70 K80 259	REACTOR		3	3		ACL1,2,3
24	S70 E26 315	CONTROLLER CIRCUIT BOARD		1	1		C.B.
25	S70 E85 346	NOISE FILTER CIRCUIT BOARD		1	1		N.F.
26	S70 E75 313	CONVERTOR CIRCUIT BOARD		1	1		CONV.B.
27	S70 E09 716	TERMINAL BLOCK	5P(L1,L2,L3,N,E)	1	1		TB1
28	S70 E08 716	TERMINAL BLOCK	3P(S1/S2/S3)	1	1		TB2
29	S70 E52 313	POWER CIRCUIT BOARD		1	1		P.B.
30	S70 K90 259	REACTOR		1	1		ACL4
31	S70 E20 234	RESISTOR		1	1		RS
32	S70 E81 255	CAPACITOR	30uF	1	1		CK
33	S70 E55 202	THERMISTOR (HEAT SINK)		1	1		TH8
34	S70 E06 008	COMP CASE TOP		1	1		
35	S70 E06 006H	COMP CASE FRONT		1	1		
36	S70 E06 007	COMP CASE SIDE		1	1		



**FUNCTIONAL AND ELECTRICAL PARTS**  
**PUHZ-W112YAA.UK**  
**PUHZ-W112YAA-BS.UK**





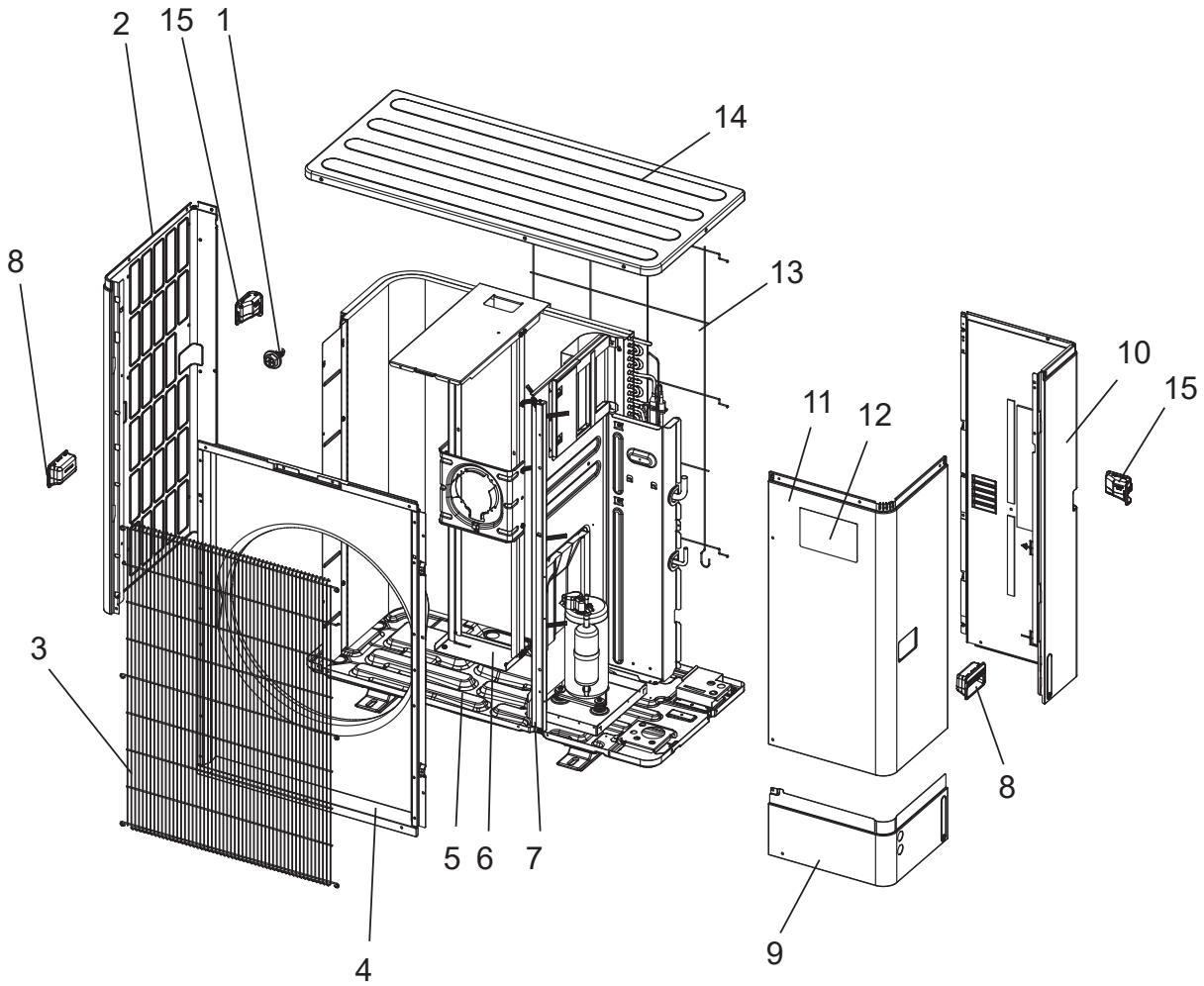


No.	Parts No.	Parts Name	Specification	Q'ty/unit		Remarks (Drawing No.)	Wiring Diagram Symbol
				PUHZ-W112YAA.UK	PUHZ-W112YAA-BS.UK		
1	S70 E42 408H	HEAT EXCHANGER		1	1		
2	S70 E96 763	FAN MOTOR		1	1		MF1
3	S70 E50 115	PROPELLER FAN		1	1		
4	S70 K01 097	NUT		1	1		
5	S70 E74 202	THERMISTOR (COMP. SURFACE)		1	1		TH33
6	S70 E23 400	COMPRESSOR	DNB28FBBMT	1	1		MC
7	S70 E78 202	THERMISTOR (DISCHARGE)		1	1		TH4
8	S70 E04 004	RUBBER MOUNT		4	4		
9	S70 E81 202	THERMISTOR-W (PLATE HEX LIQUID, AMBIENT)	1150/1150	1	1		TH6/7
10	S70 E20 440	RECEIVER		1	1		
11	S70 E80 202	THERMISTOR (WATER TEMP)		1	1		TH34
12	S70 E04 413	CHARGE PLUG		3	3		
13	S70 E96 401	EXPANSION VALVE	UKV-25D251	2	2		
14	S70 H20 209	LOW PRESSURE SWITCH		1	1		63L
15	S70 E87 402	LINEAR EXPANSION VALVE COIL	UKV-A211	1	1		LEV-B
16	S70 E88 402	LINEAR EXPANSION VALVE COIL	UKV-A212	1	1		LEV-A
17	S70 E11 208H	HIGH PRESSURE SENSOR		1	1		63HS
18	S70 E10 208H	HIGH PRESSURE SWITCH	OFF 4.14MPA	1	1		63H
19	S70 E08 403	REVERSING VALVE		1	1		
20	S70 E20 242	SOLENOID COIL <4WAY COIL>		1	1		21S4
21	S70 E47 202	THERMISTOR-H (LIQUID)	1050 XAP	1	1		TH3
22	S70 E07 005	COMP CASE BACK		1	1		
23	S70 K80 259	REACTOR		3	3		ACL1,2,3
24	S70 E26 315	CONTROLLER CIRCUIT BOARD		1	1		C.B.
25	S70 E85 346	NOISE FILTER CIRCUIT BOARD		1	1		N.F.
26	S70 E75 313	CONVERTOR CIRCUIT BOARD		1	1		CONV.B.
27	S70 E09 716	TERMINAL BLOCK	5P(L1,L2,L3,N,E)	1	1		TB1
28	S70 E08 716	TERMINAL BLOCK	3P(S1/S2/S3)	1	1		TB2
29	S70 E53 313	POWER CIRCUIT BOARD		1	1		P.B.
30	S70 K90 259	REACTOR		1	1		ACL4
31	S70 E20 234	RESISTOR		1	1		RS
32	S70 E81 255	CAPACITOR	30uF	1	1		CK
33	S70 E55 202	THERMISTOR (HEAT SINK)		1	1		TH8
34	S70 E07 008	COMP CASE TOP		1	1		
35	S70 E07 006H	COMP CASE FRONT		1	1		
36	S70 E05 007	COMP CASE SIDE		1	1		

**STRUCTURAL PARTS**  
**PUHZ-W60VAA.UK**  
**PUHZ-W60VAA-BS.UK**

**PUHZ-W85VAA.UK**  
**PUHZ-W85VAA-BS.UK**

**PUHZ-W85YAA.UK**  
**PUHZ-W85YAA-BS.UK**

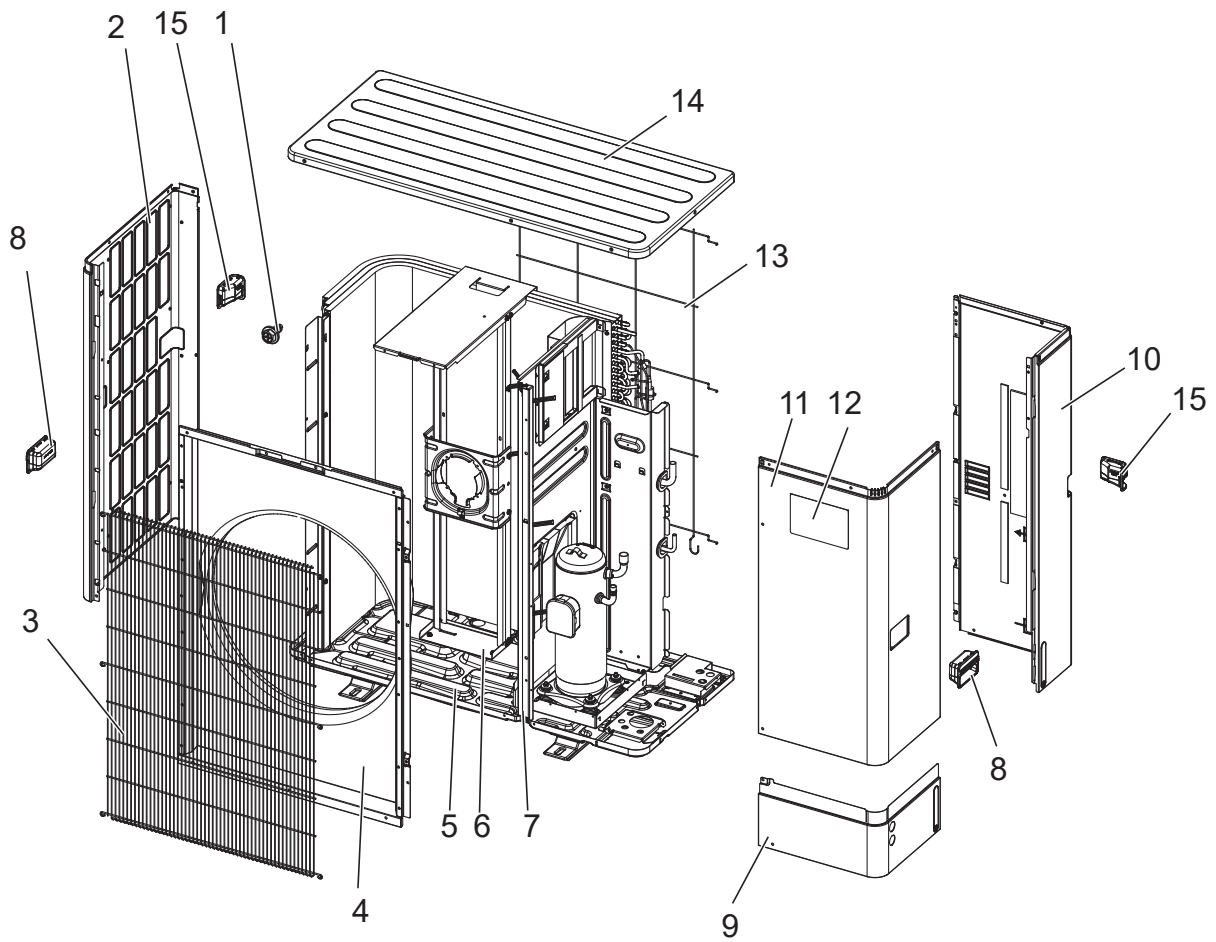




No.	Parts No.	Parts Name	Specification	Q'ty/unit						Remarks (Drawing No.)
				PUHZ-W60VAA.UK	PUHZ-W60VAA-BS.UK	PUHZ-W85VAA.UK	PUHZ-W85VAA-BS.UK	PUHZ-W85YAA.UK	PUHZ-W85YAA-BS.UK	
1	—	F.ST SCREW	(5×12)	57	57	57	57	57	57	(DG12F536H12)
2	S 70 E 22 662	SIDE PANEL (L)		1		1		1		
	S 70 E 23 662	SIDE PANEL (L)			1		1		1	
3	S 70 E 04 675	WIRE GRILLE		1	1	1	1	1	1	
4	S 70 E 73 668	FRONT PANEL		1		1		1		
	S 70 E 74 668	FRONT PANEL			1		1		1	
5	S 70 E 53 686	BASE ASSY		1		1		1		
	S 70 E 54 686	BASE ASSY			1		1		1	
6	S 70 E 76 130	MOTOR SUPPORT		1		1		1		
	S 70 E 77 130	MOTOR SUPPORT			1		1		1	
7	—	SEPARATOR		1		1				(BK00V807G17)
	—	SEPARATOR						1		(BK00V807G29)
	—	SEPARATOR			1		1			(BK00V807G18)
	—	SEPARATOR							1	(BK00V807G30)
8	S 70 E 40 655	HANDLE (FRONT)		2	2	2	2	2	2	
9	S 70 E 75 658	COVER PANEL (FRONT)		1		1		1		
	S 70 E 76 658	COVER PANEL (FRONT)			1		1		1	
10	S 70 E 75 662	SIDE PANEL(R)/COVER PANEL(R)		1		1		1		
	S 70 E 76 662	SIDE PANEL(R)/COVER PANEL(R)			1		1		1	
11	S 70 E 91 661	SERVICE PANEL		1		1		1		
	S 70 E 92 661	SERVICE PANEL			1		1		1	
12	S 70 E 95 699	BRAND LABEL (ECODAN)		1	1	1	1	1	1	
13	S 70 E 40 698	REAR GUARD		1	1	1	1	1	1	
14	S 70 E 70 641	TOP PANEL		1		1		1		
	S 70 E 80 641	TOP PANEL			1		1		1	
15	S 70 E 50 655	HANDLE (REAR)		2	2	2	2	2	2	

**STRUCTURAL PARTS**  
**PUHZ-W112VAA.UK**  
**PUHZ-W112VAA-BS.UK**

**PUHZ-W112YAA.UK**  
**PUHZ-W112YAA-BS.UK**





No.	Parts No.	Parts Name	Specification	Q'ty/unit				Remarks (Drawing No.)
				PUHZ-W112VAA.UK	PUHZ-W112VAA-BS.UK	PUHZ-W112YAA.UK	PUHZ-W112YAA-BS.UK	
1	—	F.ST SCREW	(5×12)	57	57	57	57	(DG12F536H12)
2	S 70 E 22 662	SIDE PANEL (L)		1		1		
	S 70 E 23 662	SIDE PANEL (L)			1		1	
3	S 70 E 04 675	WIRE GRILLE		1	1	1	1	
4	S 70 E 73 668	FRONT PANEL		1		1		
	S 70 E 74 668	FRONT PANEL			1		1	
5	S 70 E 60 686	BASE ASSY		1		1		
	S 70 E 61 686	BASE ASSY			1		1	
6	S 70 E 78 130	MOTOR SUPPORT		1		1		
	S 70 E 79 130	MOTOR SUPPORT			1		1	
7	—	SEPARATOR		1				(BK00V807G21)
	—	SEPARATOR			1			(BK00V807G22)
	—	SEPARATOR				1		(BK00V807G31)
	—	SEPARATOR					1	(BK00V807G32)
8	S 70 E 40 655	HANDLE (FRONT)		2	2	2	2	
9	S 70 E 75 658	COVER PANEL (FRONT)		1		1		
	S 70 E 76 658	COVER PANEL (FRONT)			1		1	
10	S 70 E 75 662	SIDE PANEL(R)/COVER PANEL (REAR)		1		1		
	S 70 E 76 662	SIDE PANEL(R)/COVER PANEL (REAR)			1		1	
11	S 70 E 91 661	SERVICE PANEL		1		1		
	S 70 E 92 661	SERVICE PANEL			1		1	
12	S 70 E 95 699	BRAND LABEL (ECODAN)		1	1	1	1	
13	S 70 E 40 698	REAR GUARD		1	1	1	1	
14	S 70 E 70 641	TOP PANEL		1		1		
	S 70 E 80 641	TOP PANEL			1		1	
15	S 70 E 50 655	HANDLE (REAR)		2	2	2	2	

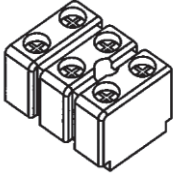

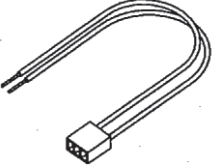
## 2

# OPTIONAL PARTS

### CONNECTOR FOR DRAIN HOSE HEATER

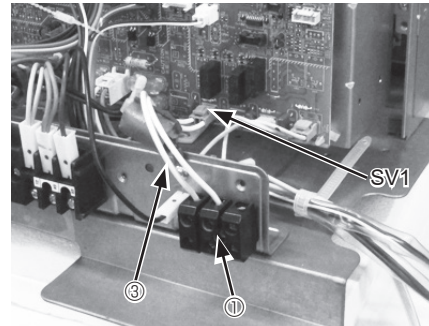
Parts No.	PAC-SE60RA-E
-----------	--------------

#### Contents

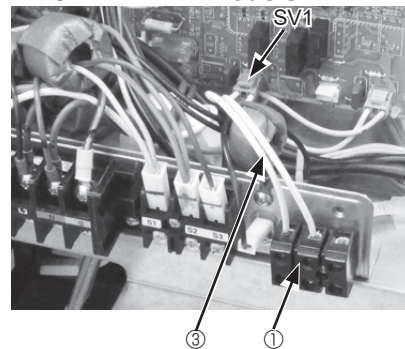
① Terminal block	×1
	
② Screw	×1
	
③ Lead wire with connector	×1
	

#### Installation

##### ● PUAZ-\*\*\*VAA models

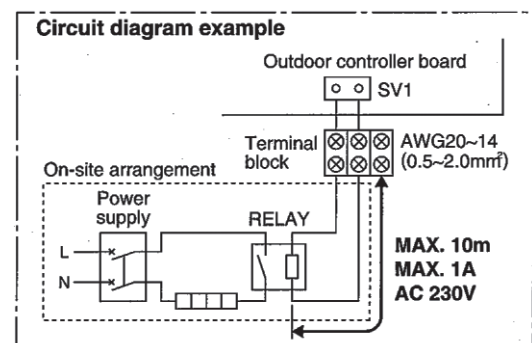


##### ● PUAZ-\*\*\*YAA models



1. Attach the terminal block ①, with the screw ②.
2. Connect the lead wire ③ connector side to SV1 port on the outdoor controller board.
3. Connect the lead wire ③ to the terminal block ①.
4. Wire local cables for a drain hose heater RELAY to the terminal block ①.

- Drain hose heater RELAY connection only
- MAX current 1A



SV1 on the controller board  
→ Drain hose heater signal output  
With PAC-SE60RA-E  
From defrost start  
For 15 min ON signal provided

### AIR DISCHARGE GUIDE

Parts No.	PAC-SH95AG-E
-----------	--------------

### AIR PROTECTION GUIDE

Parts No.	PAC-SH96SG-E
-----------	--------------

### ATTACHMENT (AIR DISCHARGE GUIDE/AIR PROTECTION GUIDE)

Parts No.	PAC-SJ82AT-E
-----------	--------------

### DRAIN SOCKET

Parts No.	PAC-SG61DS-E
-----------	--------------

### CENTRALIZED DRAIN PAN

Parts No.	PAC-SJ83DP-E
-----------	--------------

### SNOW GUARD FRONT

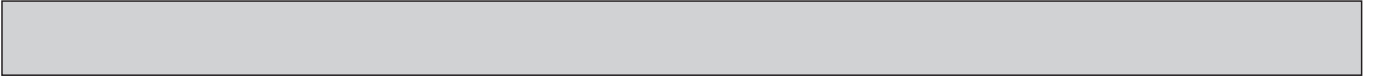
Parts No.	PAC-SNH11AF-E
-----------	---------------

### SNOW GUARD SIDE

Parts No.	PAC-SNH11AS-E
-----------	---------------

### SNOW GUARD BACK

Parts No.	PAC-SNH11AB-E
-----------	---------------





# **mitsubishi electric corporation**

HEAD OFFICE: TOKYO BUILDING, 2-7-3, MARUNOUCHI, CHIYODA-KU, TOKYO 100-8310, JAPAN

---

©Copyright 2018 MITSUBISHI ELECTRIC CORPORATION  
Issued: Jul. 2019 No. OCB681 REVISED EDITION-B  
Issued: Oct. 2018 No. OCB681 REVISED EDITION-A  
Published: Apr. 2018 No. OCB681  
Made in Japan

Specifications are subject to change without notice.