

PARTS CATALOG

[Model Name]

EHST17D-VM2D	EHST20C-YM9D	EHPT20X-TM9D
ERST17D-VM2D	EHST20C-YM9ED	EHPT20X-MHEDW
EHST20D-MED	EHST20C-TM9D	ERPT20X-MD
EHST20D-VM2D	ERST20C-VM2D	ERPT20X-VM2D
EHST20D-VM6D	EHST30C-MED	ERPT20X-VM6D
EHST20D-YM9D	EHST30C-VM6ED	EHPT30X-MED
EHST20D-YM9ED	EHST30C-YM9ED	EHPT30X-YM9ED
EHST20D-TM9D	EHST30C-TM9ED	ERPT30X-VM2ED
ERST20D-VM2D	ERST30C-VM2ED	
EHST30D-MED	EHPT17X-VM2D	
EHST30D-VM6ED	EHPT17X-VM6D	
EHST30D-YM9ED	EHPT17X-YM9D	
EHST30D-TM9ED	ERPT17X-VM2D	
ERST30D-VM2ED	EHPT20X-MED	
EHST20C-MED	EHPT20X-VM6D	
EHST20C-VM2D	EHPT20X-YM9D	
EHST20C-VM6D	EHPT20X-YM9ED	

Revision:

- Added packaged models
- Some descriptions have been modified in REVISED EDITION-A.

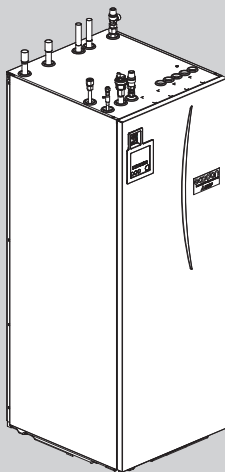
OCB714 is void.

[Service Ref.]

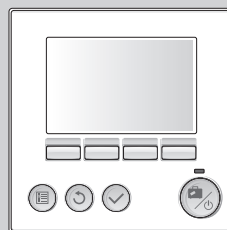
Refer to page 2.

CONTENTS

1. SERVICE PARTS LIST 4
2. OPTIONAL PARTS 34

SERVICE MANUAL (OCH714)


CYLINDER UNIT


 MAIN REMOTE
CONTROLLER

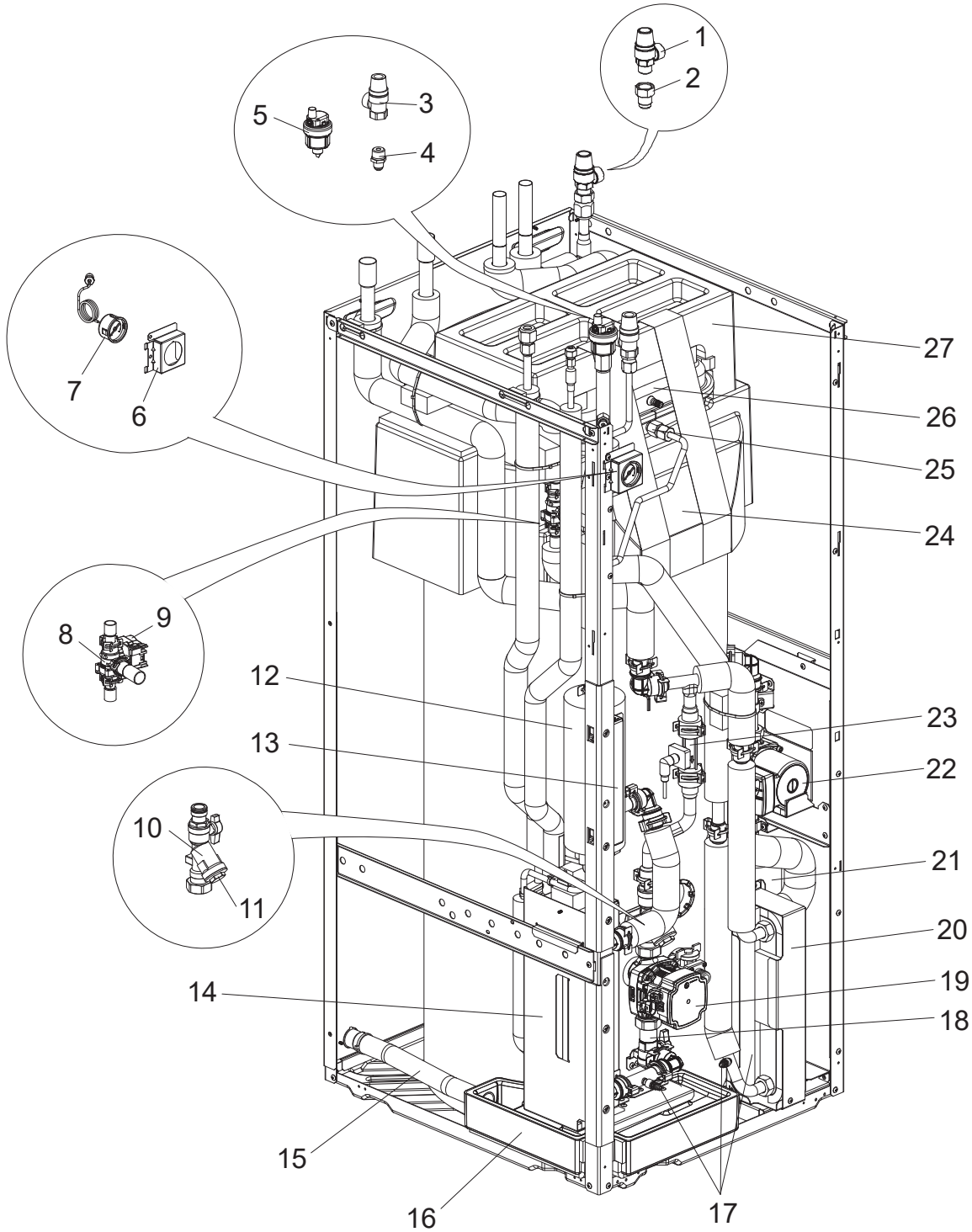
[Service Ref.]

EHST17D-VM2D.UK
ERST17D-VM2D.UK
EHST20D-MED.UK
EHST20D-VM2D.UK
EHST20D-VM6D.UK
EHST20D-YM9D.UK
EHST20D-YM9ED.UK
EHST20D-TM9D.UK
ERST20D-VM2D.UK
EHST30D-MED.UK
EHST30D-VM6ED.UK
EHST30D-YM9ED.UK
EHST30D-TM9ED.UK
ERST30D-VM2ED.UK
EHST20C-MED.UK
EHST20C-VM2D.UK
EHST20C-VM6D.UK
EHST20C-YM9D.UK
EHST20C-YM9ED.UK
EHST20C-TM9D.UK
ERST20C-VM2D.UK
EHST30C-MED.UK
EHST30C-VM6ED.UK
EHST30C-YM9ED.UK
EHST30C-TM9ED.UK
ERST30C-VM2ED.UK
EHPT17X-VM2D.UK
EHPT17X-VM6D.UK
EHPT17X-YM9D.UK
ERPT17X-VM2D.UK
EHPT20X-MED.UK
EHPT20X-VM6D.UK
EHPT20X-YM9D.UK
EHPT20X-YM9ED.UK
EHPT20X-TM9D.UK
EHPT20X-MHEDW.UK
ERPT20X-MD.UK
ERPT20X-VM2D.UK
ERPT20X-VM6D.UK
EHPT30X-MED.UK
EHPT30X-YM9ED.UK
ERPT30X-VM2ED.UK

This page is intentionally left blank.

EHST17D-VM2D.UK

ERST17D-VM2D.UK



1. The part quantity below indicates the required number of pieces per unit.
2. The circled No. indicates that the part is not shown in the figure

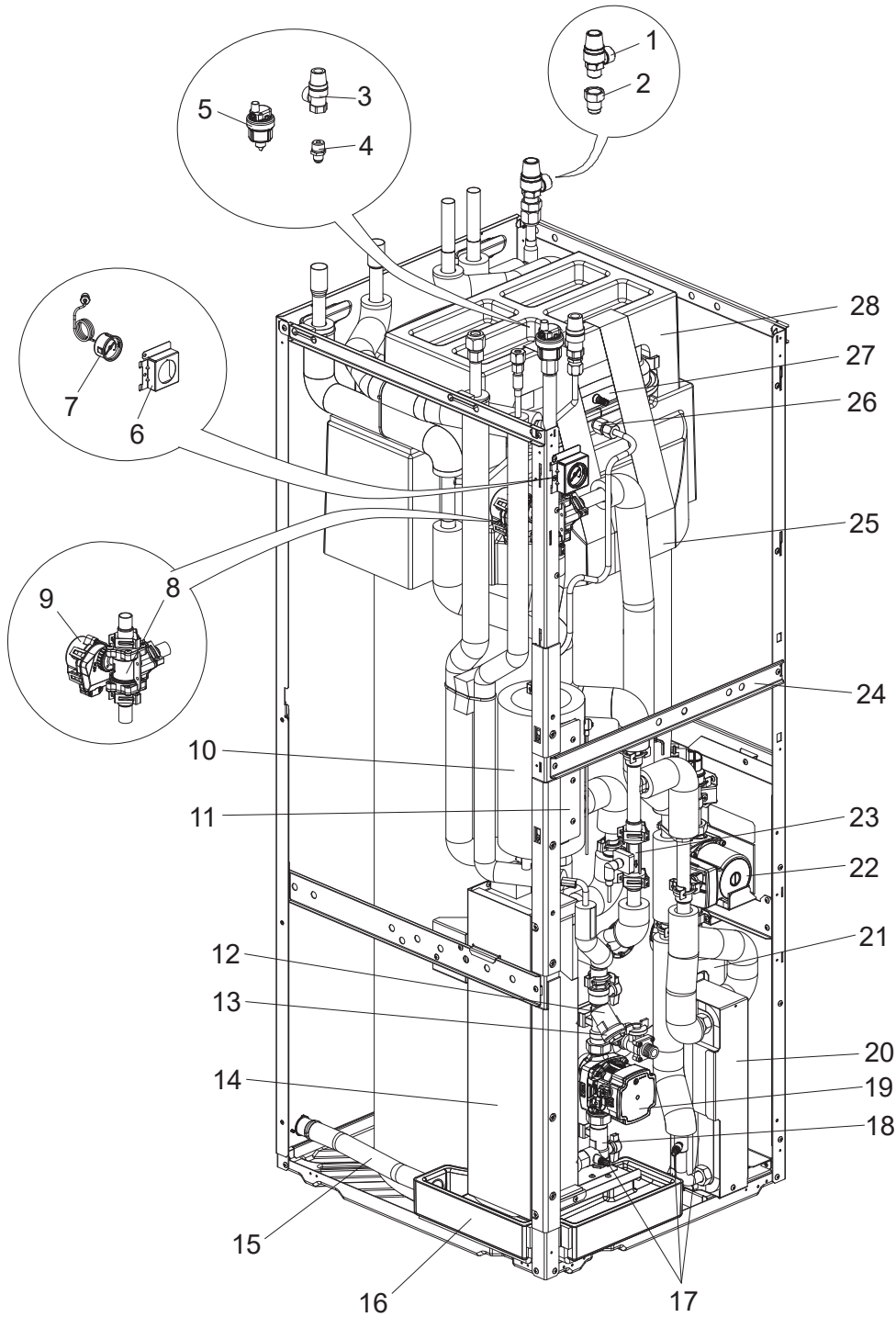
No.	Parts No.	Parts name	EHST17D-VM2D.UK	ERST17D-VM2D.UK	Wiring Diagram Symbol	Remarks [Drawing No.]
1	S70 C30 404	PRESSURE RELIEF VALVE	1	1		10 bar/ FOR SANITARY SIDE
2	S70 C70 096	FLARE JOINT	1	1		5/8F-R1/2
3	S70 C21 404	PRESSURE RELIEF VALVE	1	1		3 bar
4	S70 C60 096	FLARE JOINT	1	1		3/8F-R1/2
5	S70 C18 150	AIR VENT (AUTOMATIC)	1	1		
6	S70 C80 206	MANOMETER STAY	1	1		
7	S70 C20 205	MANOMETER	1	1		
8	S70 C34 406	3WAY VALVE	1	1		Small
9	S70 C34 406	3WAY VALVE (MOTOR)	1	1		Small
10	S70 C20 452	STRAINER VALVE	1	1		
11	S70 C28 460	STRAINER PACKING	1	1		
12	S70 C42 441	BOOSTER HEATER	1	1	BH1	1 ϕ 230 V 2 kW
13	—	BOOSTER HEATER STAY	1	1		[RK00L196G01]
14	S70 C51 408	WATER COIL ASSY (2HP)	1	1		
15	S70 C10 527	DRAIN HOSE		1		
16	S70 C20 529	DRAIN PAN ASSY		1		
17	S70 C10 358	DRAIN COCK/AIR VENT (WATER CAP ASSY 320)	3	3		FOR PRIMARY/ SANITARY CIRCUIT
18	S70 C60 356	PUMP VALVE	1	1		
19	S70 C11 355	WATER PUMP	1		MP1	FOR PRIMARY CIRCUIT
19	S70 C13 355	WATER PUMP		1		
20	S70 C90 408	WATER COIL ASSY (W)	1	1		MWA1/ REFRIGERANT-WATER
21	S70 C60 357	SCALE TRAP	1	1		
22	S70 C05 355	WATER PUMP	1	1	MP4	FOR SANITARY CIRCUIT
23	S70 C74 266	FLOW SENSOR (body & Cable)	1	1		
24	—	TANK CUSHION TOP	1	1		[RK25A422G02]
25	S70 C50 096	FLARE JOINT	1	1		3/8F-G3/8
26	S70 C15 402	EXPANSION VESSEL	1	1		12 L
27	—	EXPANSION VESSEL CUSHION	1	1		[RK25A423G01]
(28)	S70 C69 202	THERMISTOR(FLOW WATER TEMP & RETURN WATER TEMP)	1	1		
(29)	S70 C55 460	GASKET 1"	4	4		
(30)	S70 C66 460	GASKET 3/4"	7	7		
(31)	S70 C77 460	GASKET 3/8"	1	1		
(32)	S70 C88 460	GASKET 1/4"	1	1		
(33)	S70 C23 460	O-RING	18	18		BLACK
(34)	S70 C01 800	GREASE	1*	1*		FOR QUICK CONNECTION
(35)	S70 C10 465	FASTENER	18	18		FOR QUICK CONNECTION
(36)	S70 C45 097	ADJUST BOLT	4	4		ACCESSORY
(37)	S70 C26 460	O-RING	2	2		BLACK/ FOR FLOW SENSOR
(38)	S70 C30 460	O-RING	4	4		BLACK/ FOR 3WAY VALVE/TANK
(39)	S70 C20 465	FASTENER	2	2		FOR FLOW SENSOR
(40)	S70 C40 465	FASTENER	4	4		FOR 3WAY VALVE/TANK

Do not reuse the O-ring or strainer packing that was once removed, but be sure to replace with a new one.
 * Apply grease appropriately on the O-ring for the quick connection in the unit.

EHST20C-MED.UK
EHST20C-YM9D.UK
ERST20C-VM2D.UK

EHST20C-VM2D.UK
EHST20C-YM9ED.UK

EHST20C-VM6D.UK
EHST20C-TM9D.UK



1. The part quantity below indicates the required number of pieces per unit.
2. The circled No. indicates that the part is not shown in the figure.

No.	Parts No.	Parts name	EHST20C-MED.UK	EHST20C-VM2D.UK	EHST20C-VM6D.UK	EHST20C-YM9D.UK	EHST20C-YM9ED.UK	EHST20C-TM9D.UK	ERST20C-VM2D.UK	Wiring Diagram Symbol	Remarks [Drawing No.]
			1	1	1	1	1	1	1		
1	S70 C30 404	PRESSURE RELIEF VALVE	1	1	1	1	1	1	1		10 bar/ FOR SANITARY SIDE
2	S70 C70 096	FLARE JOINT	1	1	1	1	1	1	1		5/8F-R1/2
3	S70 C21 404	PRESSURE RELIEF VALVE	1	1	1	1	1	1	1		3 bar

No.	Parts No.	Parts name	EHST20C-MED.UK	EHST20C-VM2D.UK	EHST20C-VM6D.UK	EHST20C-VM9D.UK	EHST20C-YM9ED.UK	EHST20C-TM9D.UK	ERST20C-VM2D.UK	Wiring Diagram Symbol	Remarks [Drawing No.]
4	S70 C60 096	FLARE JOINT	1	1	1	1	1	1	1		3/8F-R1/2
5	S70 C18 150	AIR VENT (AUTOMATIC)	1	1	1	1	1	1	1		
6	S70 C80 206	MANOMETER STAY	1	1	1	1	1	1	1		
7	S70 C20 205	MANOMETER	1	1	1	1	1	1	1		
8	S70 C45 762	3WAY VALVE	1	1	1	1	1	1	1		Large
9	S70 C45 762	3WAY VALVE (MOTOR)	1	1	1	1	1	1	1		Large
10	S70 C41 441	BOOSTER HEATER	1								0 kW
10	S70 C42 441	BOOSTER HEATER		1					1	BH1	1 ϕ 230 V 2 kW
10	S70 C43 441	BOOSTER HEATER			1					BH1, BH2	1 ϕ 230 V 6 kW
10	S70 C44 441	BOOSTER HEATER				1	1			BH1, BH2	3 ϕ 400 V 9 kW
10	S70 C45 441	BOOSTER HEATER						1		BH1, BH2	3 ϕ 230 V 9 kW
11	—	BOOSTER HEATER STAY	1	1	1				1		[RK00L196G01]
11	—	BOOSTER HEATER STAY 9 kW				1	1	1			[RK00B922G01]
12	S70 C20 452	STRAINER VALVE	1	1	1	1	1	1	1		
13	S70 C28 460	STRAINER PACKING	1	1	1	1	1	1	1		
14	S70 C81 408	WATER COIL ASSY (5HP)	1	1	1	1	1	1	1		
15	S70 C10 527	DRAIN HOSE							1		
16	S70 C20 529	DRAIN PAN ASSY							1		
17	S70 C10 358	DRAIN COCK/AIR VENT (WATER CAP ASSY 320)	3	3	3	3	3	3	3		FOR PRIMARY/ SANITARY CIRCUIT
18	S70 C20 356	PUMP VALVE	1	1	1	1	1	1	1		
19	S70 C11 355	WATER PUMP	1	1	1	1	1	1		MP1	FOR PRIMARY CIRCUIT
19	S70 C13 355	WATER PUMP							1		
20	S70 C85 408	WATER COIL ASSY (W)	1	1	1	1	1	1	1		MWA2/ REFRIGERANT-WATER
21	S70 C60 357	SCALE TRAP	1	1	1	1	1	1	1		
22	S70 C05 355	WATER PUMP	1	1	1	1	1	1	1	MP4	FOR SANITARY CIRCUIT
23	S70 C74 266	FLOW SENSOR (body & Cable)	1	1	1	1	1	1	1		
24	—	DIV FRAME H	1	1	1	1	1	1	1		[BK02N520G03]
25	—	TANK CUSHION TOP	1	1	1	1	1	1	1		[RK25A422G02]
26	S70 C50 096	FLARE JOINT		1	1	1		1	1		3/8F-G3/8
27	S70 C15 402	EXPANSION VESSEL		1	1	1		1	1		12 L
28	—	EXPANSION VESSEL CUSHION	1	1	1	1	1	1	1		[RK25A423G01]
29	S70 C69 202	THERMISTOR (FLOW WATER TEMP & RETURN WATER TEMP)	1	1	1	1	1	1	1		
30	S70 C55 460	GASKET 1"	4	4	4	4	4	4	4		
31	S70 C66 460	GASKET 3/4"	7	7	7	7	7	7	7		
32	S70 C77 460	GASKET 3/8"		1	1	1		1	1		
33	S70 C88 460	GASKET 1/4"	1	1	1	1	1	1	1		
34	S70 C23 460	O-RING	13	13	13	13	13	13	13		BLACK
35	S70 C01 800	GREASE	1*	1*	1*	1*	1*	1*	1*		FOR QUICK CONNECTION
36	S70 C10 465	FASTENER	13	13	13	13	13	13	17		FOR QUICK CONNECTION
37	S70 C45 097	ADJUST BOLT	4	4	4	4	4	4	4		ACCESSORY
38	S70 C26 460	O-RING	5	5	5	5	5	5	5		BLACK/ FOR FLOW SENSOR/3WAY VALVE
39	S70 C30 460	O-RING	1	1	1	1	1	1	1		BLACK/ FOR TANK
40	S70 C20 465	FASTENER	5	5	5	5	5	5	5		FOR FLOW SENSOR/ 3WAY VALVE
41	S70 C40 465	FASTENER	1	1	1	1	1	1	1		FOR TANK

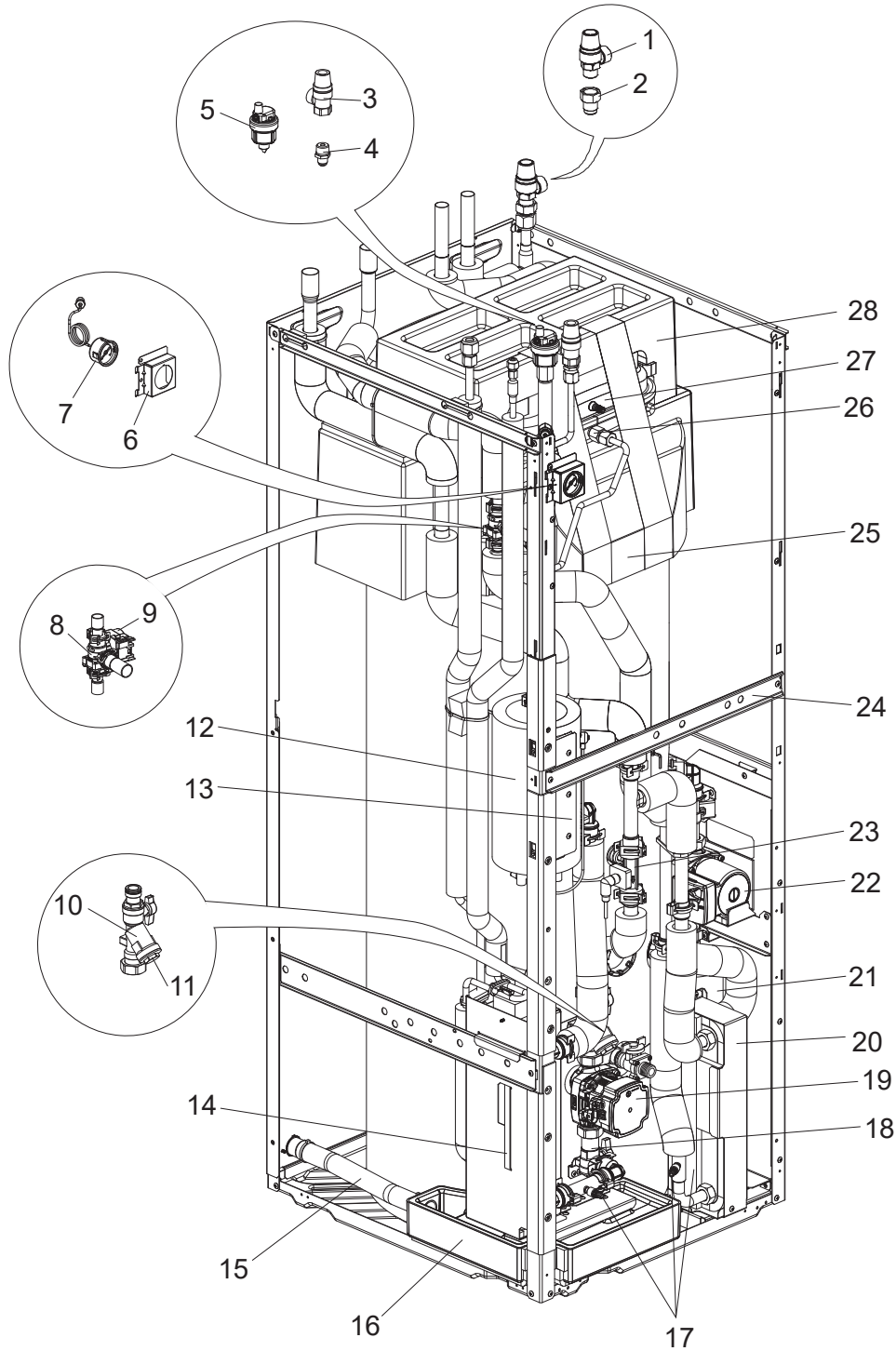
Do not reuse the O-ring or strainer packing that was once removed, but be sure to replace with a new one.

* Apply grease appropriately on the O-ring for the quick connection in the unit.

EHST20D-MED.UK
 EHST20D-YM9D.UK
 ERST20D-VM2D.UK

EHST20D-VM2D.UK
 EHST20D-YM9ED.UK

EHST20D-VM6D.UK
 EHST20D-TM9D.UK



1. The part quantity below indicates the required number of pieces per unit.
 2. The circled No. indicates that the part is not shown in the figure.

No.	Parts No.	Parts name	EHST20D-MED.UK	EHST20D-VM2D.UK	EHST20D-VM6D.UK	EHST20D-YM9D.UK	EHST20D-YM9ED.UK	EHST20D-TM9D.UK	ERST20D-VM2D.UK	Wiring Diagram Symbol	Remarks [Drawing No.]
1	S70 C30 404	PRESSURE RELIEF VALVE	1	1	1	1	1	1	1		10 bar/ FOR SANITARY SIDE
2	S70 C70 096	FLARE JOINT	1	1	1	1	1	1	1		5/8F-R1/2
3	S70 C21 404	PRESSURE RELIEF VALVE	1	1	1	1	1	1	1		3 bar

No.	Parts No.	Parts name	EHST20D-MED.UK	EHST20D-VM2D.UK	EHST20D-VM6D.UK	EHST20D-VM9D.UK	EHST20D-YM9ED.UK	EHST20D-TM9D.UK	ERST20D-VM2D.UK	Wiring Diagram Symbol	Remarks [Drawing No.]
4	S70 C60 096	FLARE JOINT	1	1	1	1	1	1	1		3/8F-R1/2
5	S70 C18 150	AIR VENT (AUTOMATIC)	1	1	1	1	1	1	1		
6	S70 C80 206	MANOMETER STAY	1	1	1	1	1	1	1		
7	S70 C20 205	MANOMETER	1	1	1	1	1	1	1		
8	S70 C34 406	3WAY VALVE	1	1	1	1	1	1	1		Small
9	S70 C34 406	3WAY VALVE (MOTOR)	1	1	1	1	1	1	1		Small
10	S70 C20 452	STRAINER VALVE	1	1	1	1	1	1	1		
11	S70 C28 460	STRAINER PACKING	1	1	1	1	1	1	1		
12	S70 C41 441	BOOSTER HEATER	1								0 kW
12	S70 C42 441	BOOSTER HEATER		1					1	BH1	1 ϕ 230 V 2 kW
12	S70 C43 441	BOOSTER HEATER			1					BH1, BH2	1 ϕ 230 V 6 kW
12	S70 C44 441	BOOSTER HEATER				1	1			BH1, BH2	3 ϕ 400 V 9 kW
12	S70 C45 441	BOOSTER HEATER						1		BH1, BH2	3 ϕ 230 V 9 kW
13	—	BOOSTER HEATER STAY	1	1	1				1		[RK00L196G01]
13	—	BOOSTER HEATER STAY 9 kW				1	1	1			[RK00B922G01]
14	S70 C61 408	WATER COIL ASSY (2HP)	1	1	1	1	1	1	1		
15	S70 C10 527	DRAIN HOSE							1		
16	S70 C20 529	DRAIN PAN ASSY							1		
17	S70 C10 358	DRAIN COCK/AIR VENT (WATER CAP ASSY 320)	3	3	3	3	3	3	3		FOR PRIMARY/ SANITARY CIRCUIT
18	S70 C60 356	PUMP VALVE	1	1	1	1	1	1	1		
19	S70 C11 355	WATER PUMP	1	1	1	1	1	1		MP1	FOR PRIMARY CIRCUIT
19	S70 C13 355	WATER PUMP							1		
20	S70 C90 408	WATER COIL ASSY (W)	1	1	1	1	1	1	1		MWA1/ REFRIGERANT-WATER
21	S70 C60 357	SCALE TRAP	1	1	1	1	1	1	1		
22	S70 C05 355	WATER PUMP	1	1	1	1	1	1	1	MP4	FOR SANITARY CIRCUIT
23	S70 C74 266	FLOW SENSOR (body & Cable)	1	1	1	1	1	1	1		
24	—	DIV FRAME H	1	1	1	1	1	1	1		[BK02N520G03]
25	—	TANK CUSHION TOP	1	1	1	1	1	1	1		[RK25A422G02]
26	S70 C50 096	FLARE JOINT		1	1	1		1	1		3/8F-G3/8
27	S70 C15 402	EXPANSION VESSEL		1	1	1		1	1		12 L
28	—	EXPANSION VESSEL CUSHION	1	1	1	1	1	1	1		[RK25A423G01]
(29)	S70 C69 202	THERMISTOR (FLOW WATER TEMP & RETURN WATER TEMP)	1	1	1	1	1	1	1		
(30)	S70 C55 460	GASKET 1"	4	4	4	4	4	4	4		
(31)	S70 C66 460	GASKET 3/4"	7	7	7	7	7	7	7		
(32)	S70 C77 460	GASKET 3/8"		1	1	1		1	1		
(33)	S70 C88 460	GASKET 1/4"	1	1	1	1	1	1	1		
(34)	S70 C23 460	O-RING	17	17	17	17	17	17	17		BLACK
(35)	S70 C01 800	GREASE	1*	1*	1*	1*	1*	1*	1*		FOR QUICK CONNECTION
(36)	S70 C10 465	FASTENER	17	17	17	17	17	17	17		FOR QUICK CONNECTION
(37)	S70 C45 097	ADJUST BOLT	4	4	4	4	4	4	4		ACCESSORY
(38)	S70 C26 460	O-RING	2	2	2	2	2	2	2		BLACK/ FOR FLOW SENSOR
(39)	S70 C30 460	O-RING	4	4	4	4	4	4	4		BLACK/ FOR 3WAY VALVE/TANK
(40)	S70 C20 465	FASTENER	2	2	2	2	2	2	2		FOR FLOW SENSOR
(41)	S70 C40 465	FASTENER	4	4	4	4	4	4	4		FOR 3WAY VALVE/TANK

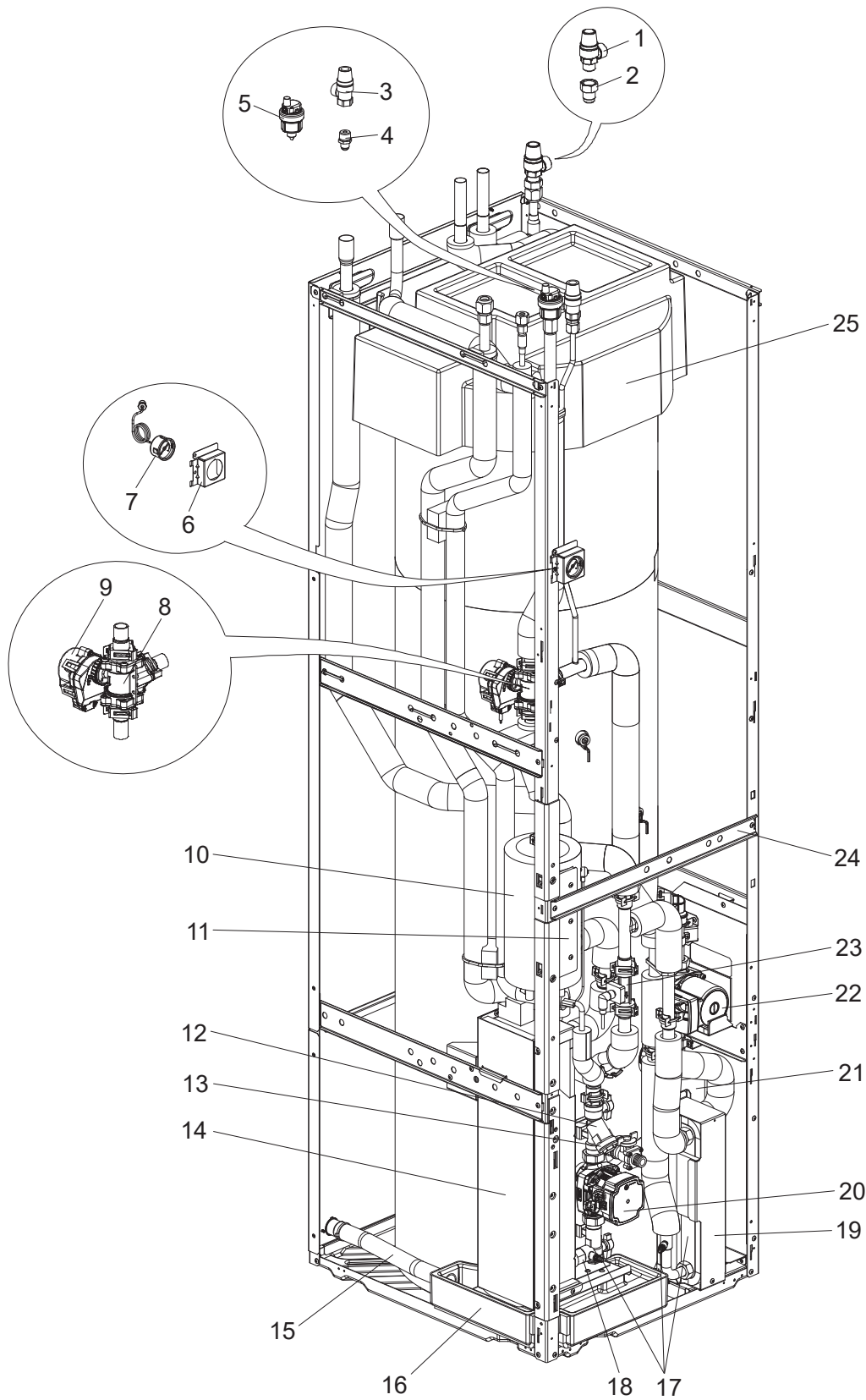
Do not reuse the O-ring or strainer packing that was once removed, but be sure to replace with a new one.

* Apply grease appropriately on the O-ring for the quick connection in the unit.

EHST30C-MED.UK
ERST30C-VM2ED.UK

EHST30C-YM9ED.UK
EHST30C-VM6ED.UK

EHST30C-TM9ED.UK



1. The part quantity below indicates the required number of pieces per unit.
2. The circled No. indicates that the part is not shown in the figure.

No.	Parts No.	Parts name						Wiring Diagram Symbol	Remarks [Drawing No.]
			EHST30C-MED.UK	EHST30C-YM9ED.UK	EHST30C-TM9ED.UK	ERST30C-VM2ED.UK	EHST30C-VM6ED.UK		
1	S70 C30 404	PRESSURE RELIEF VALVE	1	1	1	1	1		10 bar/ FOR SANITARY SIDE
2	S70 C70 096	FLARE JOINT	1	1	1	1	1		5/8F-R1/2
3	S70 C21 404	PRESSURE RELIEF VALVE	1	1	1	1	1		3 bar
4	S70 C60 096	FLARE JOINT	1	1	1	1	1		3/8F-R1/2
5	S70 C18 150	AIR VENT (AUTOMATIC)	1	1	1	1	1		
6	S70 C80 206	MANOMETER STAY	1	1	1	1	1		
7	S70 C20 205	MANOMETER	1	1	1	1	1		
8	S70 C45 762	3WAY VALVE	1	1	1	1	1		Large
9	S70 C45 762	3WAY VALVE (MOTOR)	1	1	1	1	1		Large
10	S70 C41 441	BOOSTER HEATER	1						0 kW
10	S70 C42 441	BOOSTER HEATER				1		BH1	1 ϕ 230 V 2 kW
10	S70 C43 441	BOOSTER HEATER					1	BH1, BH2	1 ϕ 230 V 6 kW
10	S70 C44 441	BOOSTER HEATER		1				BH1, BH2	3 ϕ 400 V 9 kW
10	S70 C45 441	BOOSTER HEATER			1			BH1, BH2	3 ϕ 230 V 9 kW
11	—	BOOSTER HEATER STAY	1			1	1		[RK00L196G01]
11	—	BOOSTER HEATER STAY 9kW		1	1				[RK00B922G01]
12	S70 C20 452	STRAINER VALVE	1	1	1	1	1		
13	S70 C28 460	STRAINER PACKING	1	1	1	1	1		
14	S70 C91 408	WATER COIL ASSY (5HP)	1	1	1	1	1		
15	S70 C10 527	DRAIN HOSE				1			
16	S70 C20 529	DRAIN PAN ASSY				1			
17	S70 C10 358	DRAIN COCK/AIR VENT (WATER CAP ASSY 320)	3	3	3	3	3		
18	S70 C20 356	PUMP VALVE	1	1	1	1	1		
19	S70 C85 408	WATER COIL ASSY (W)	1	1	1	1	1		MWA2/ REFRIGERANT-WATER
20	S70 C11 355	WATER PUMP	1	1	1		1	MP1	FOR PRIMARY CIRCUIT
20	S70 C13 355	WATER PUMP				1			
21	S70 C60 357	SCALE TRAP	1	1	1	1	1		
22	S70 C05 355	WATER PUMP	1	1	1	1	1	MP4	FOR SANITARY CIRCUIT
23	S70 C74 266	FLOW SENSOR (body & Cable)	1	1	1	1	1		
24	—	DIV FRAME H	1	1	1	1	1		[BK02N520G03]
25	—	TANK CUSHION TOP	1	1	1	1	1		[RK25A412G02]
(26)	S70 C69 202	THERMISTOR(FLOW WATER TEMP & RETURN WATER TEMP)	1	1	1	1	1		
(27)	S70 C55 460	GASKET 1"	4	4	4	4	4		
(28)	S70 C66 460	GASKET 3/4"	7	7	7	7	7		
(29)	S70 C88 460	GASKET 1/4"	1	1	1	1	1		
(30)	S70 C23 460	O-RING	13	13	13	13	13		BLACK
(31)	S70 C01 800	GREASE	1*	1*	1*	1*	1*		FOR QUICK CONNECTION
(32)	S70 C10 465	FASTENER	13	13	13	13	13		FOR QUICK CONNECTION
(33)	S70 C45 097	ADJUST BOLT	4	4	4	4	4		ACCESSORY
(34)	S70 C26 460	O-RING	5	5	5	5	5		BLACK/ FOR FLOW SENSOR/ 3WAY VALVE
(35)	S70 C30 460	O-RING	1	1	1	1	1		BLACK/ FOR TANK
(36)	S70 C20 465	FASTENER	5	5	5	5	5		FOR FLOW SENSOR/ 3WAY VALVE
(37)	S70 C40 465	FASTENER	1	1	1	1	1		FOR TANK

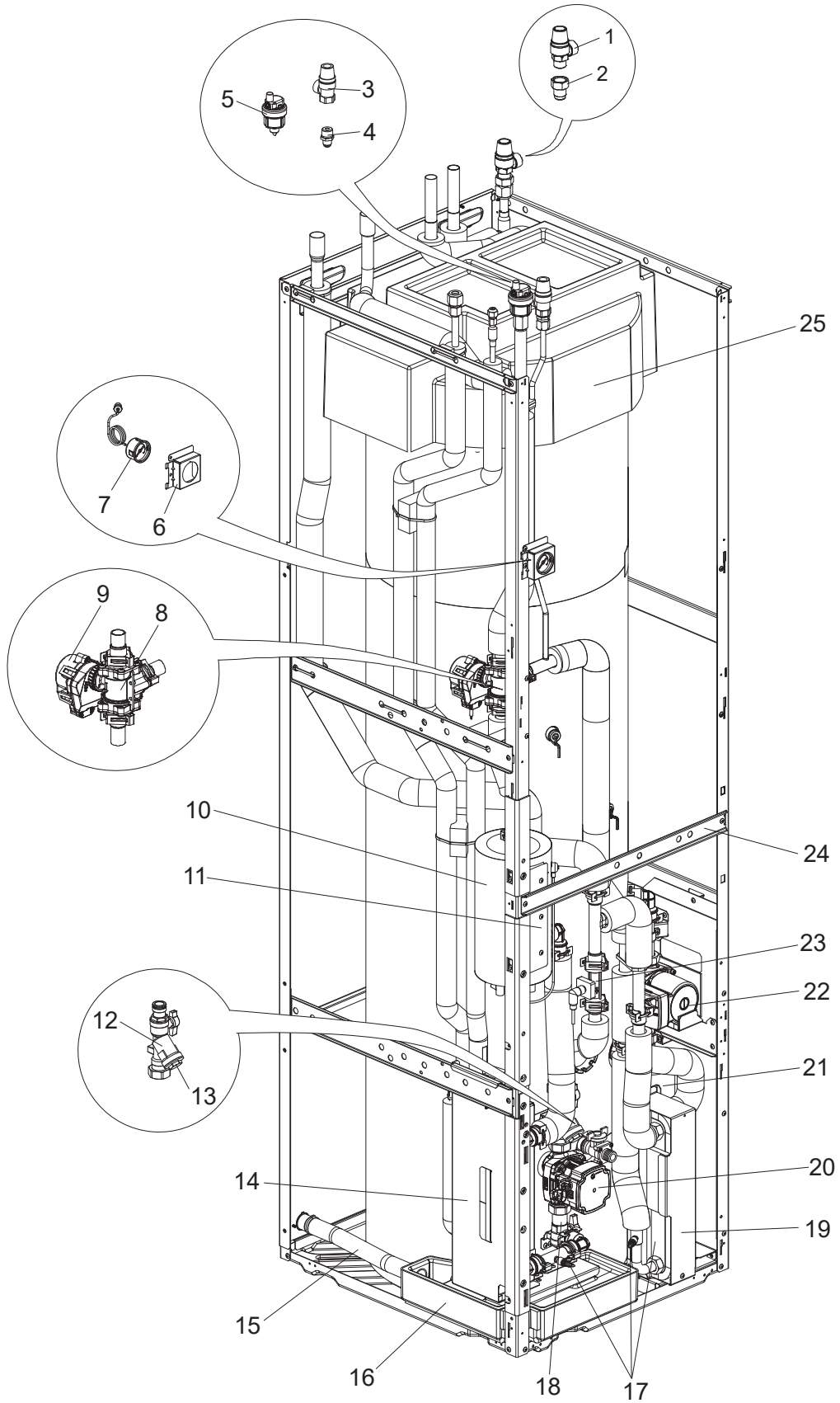
Do not reuse the O-ring or strainer packing that was once removed, but be sure to replace with a new one.

* Apply grease appropriately on the O-ring for the quick connection in the unit.

EHST30D-MED.UK
ERST30D-VM2ED.UK

EHST30D-YM9ED.UK
EHST30D-VM6ED.UK

EHST30D-TM9ED.UK



1. The part quantity below indicates the required number of pieces per unit.
2. The circled No. indicates that the part is not shown in the figure.

No.	Parts No.	Parts name						Wiring Diagram Symbol	Remarks [Drawing No.]
			EHST30D-MED.UK	EHST30D-YM9ED.UK	EHST30D-TM9ED.UK	ERST30D-VM2ED.UK	EHST30D-VM6ED.UK		
1	S70 C30 404	PRESSURE RELIEF VALVE	1	1	1	1	1		10 bar/ FOR SANITARY SIDE
2	S70 C70 096	FLARE JOINT	1	1	1	1	1		5/8F-R1/2
3	S70 C21 404	PRESSURE RELIEF VALVE	1	1	1	1	1		3 bar
4	S70 C60 096	FLARE JOINT	1	1	1	1	1		3/8F-R1/2
5	S70 C18 150	AIR VENT (AUTOMATIC)	1	1	1	1	1		
6	S70 C80 206	MANOMETER STAY	1	1	1	1	1		
7	S70 C20 205	MANOMETER	1	1	1	1	1		
8	S70 C45 762	3WAY VALVE	1	1	1	1	1		Large
9	S70 C45 762	3WAY VALVE (MOTOR)	1	1	1	1	1		Large
10	S70 C41 441	BOOSTER HEATER	1						0 kW
10	S70 C42 441	BOOSTER HEATER				1		BH1	1 ϕ 230 V 2 kW
10	S70 C43 441	BOOSTER HEATER					1	BH1, BH2	1 ϕ 230 V 6 kW
10	S70 C44 441	BOOSTER HEATER		1				BH1, BH2	3 ϕ 400 V 9 kW
10	S70 C45 441	BOOSTER HEATER			1			BH1, BH2	3 ϕ 230 V 9 kW
11	—	BOOSTER HEATER STAY	1			1	1		[RK00L196G01]
11	—	BOOSTER HEATER STAY 9kW		1	1				[RK00B922G01]
12	S70 C20 452	STRAINER VALVE	1	1	1	1	1		
13	S70 C28 460	STRAINER PACKING	1	1	1	1	1		
14	S70 C71 408	WATER COIL ASSY (2HP)	1	1	1	1	1		
15	S70 C10 527	DRAIN HOSE				1			
16	S70 C20 529	DRAIN PAN ASSY				1			
17	S70 C10 358	DRAIN COCK/AIR VENT (WATER CAP ASSY 320)	3	3	3	3	3		FOR PRIMARY/ SANITARY CIRCUIT
18	S70 C60 356	PUMP VALVE	1	1	1	1	1		
19	S70 C85 408	WATER COIL ASSY (W)	1	1	1	1	1		MWA2/ REFRIGERANT-WATER
20	S70 C11 355	WATER PUMP	1	1	1		1	MP1	FOR PRIMARY CIRCUIT
20	S70 C13 355	WATER PUMP				1			
21	S70 C60 357	SCALE TRAP	1	1	1	1	1		
22	S70 C05 355	WATER PUMP	1	1	1	1	1	MP4	FOR SANITARY CIRCUIT
23	S70 C74 266	FLOW SENSOR (body & Cable)	1	1	1	1	1		
24	—	DIV FRAME H	1	1	1	1	1		[BK02N520G03]
25	—	TANK CUSHION TOP	1	1	1	1	1		[RK25A412G02]
(26)	S70 C69 202	THERMISTOR (FLOW WATER TEMP & RETURN WATER TEMP)	1	1	1	1	1		
(27)	S70 C55 460	GASKET 1"	4	4	4	4	4		
(28)	S70 C66 460	GASKET 3/4"	7	7	7	7	7		
(29)	S70 C88 460	GASKET 1/4"	1	1	1	1	1		
(30)	S70 C23 460	O-RING	18	18	18	18	18		BLACK
(31)	S70 C01 800	GREASE	1*	1*	1*	1*	1*		FOR QUICK CONNECTION
(32)	S70 C10 465	FASTENER	18	18	18	18	18		FOR QUICK CONNECTION
(33)	S70 C45 097	ADJUST BOLT	4	4	4	4	4		ACCESSORY
(34)	S70 C26 460	O-RING	5	5	5	5	5		BLACK/ FOR FLOW SENSOR/3WAY VALVE
(35)	S70 C30 460	O-RING	1	1	1	1	1		BLACK/ FOR TANK
(36)	S70 C20 465	FASTENER	5	5	5	5	5		FOR FLOW SENSOR/ 3WAY VALVE
(37)	S70 C40 465	FASTENER	1	1	1	1	1		FOR TANK

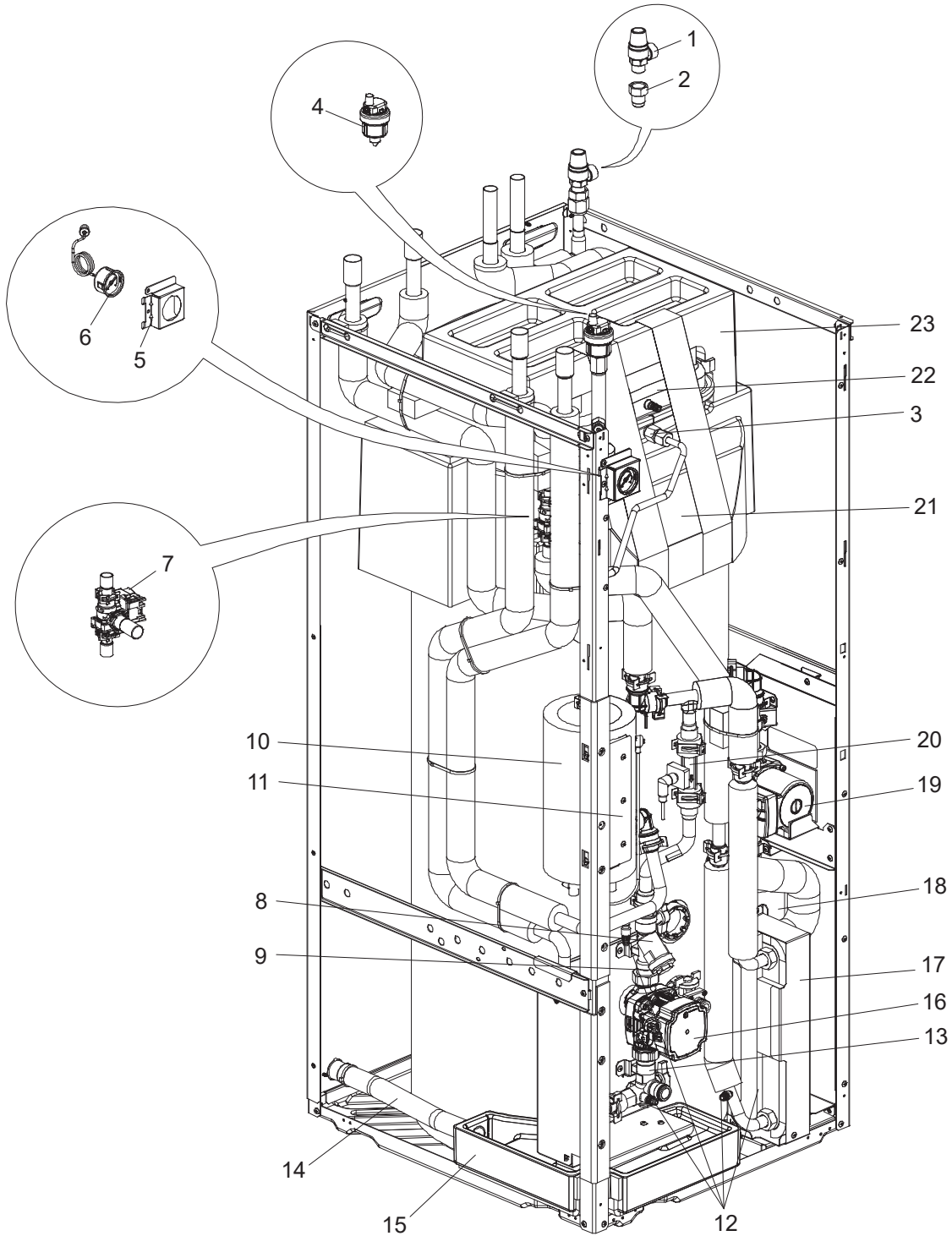
Do not reuse the O-ring or strainer packing that was once removed, but be sure to replace with a new one.

* Apply grease appropriately on the O-ring for the quick connection in the unit.

EHPT17X-VM2D.UK
ERPT17X-VM2D.UK

EHPT17X-VM6D.UK

EHPT17X-YM9D.UK



1. The part quantity below indicates the required number of pieces per unit.
2. The circled No. indicates that the part is not shown in the figure

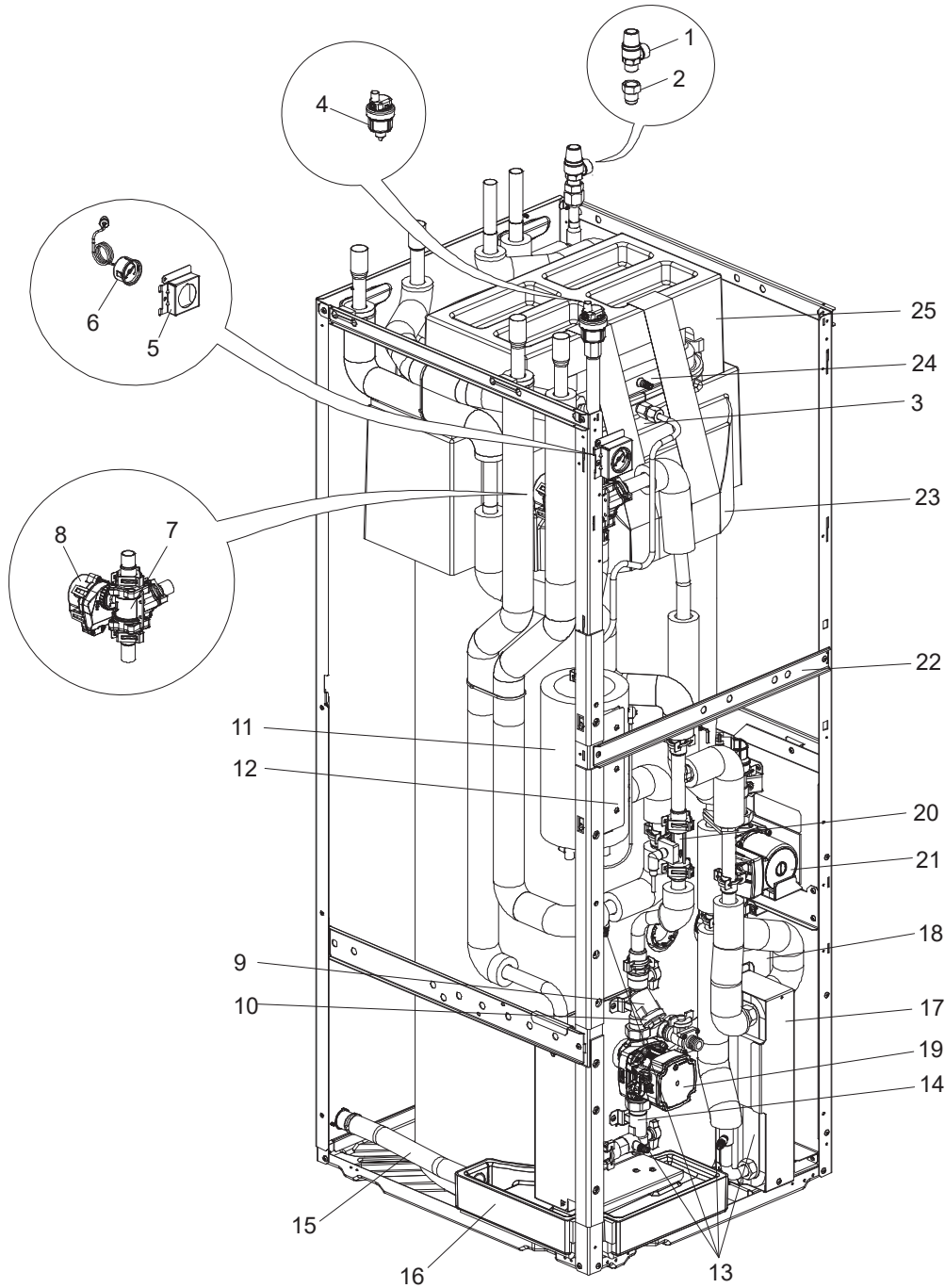
No.	Parts No.	Parts name	EHPT17X-VM2D.UK	EHPT17X-VM6D.UK	EHPT17X-VM9D.UK	ERPT17X-VM2D.UK	Wiring Diagram Symbol	Remarks [Drawing No.]
1	S70 C30 404	PRESSURE RELIEF VALVE	1	1	1	1		10 bar/ FOR SANITARY SIDE
2	S70 C70 096	FLARE JOINT	1	1	1	1		5/8F-R1/2
3	S70 C50 096	FLARE JOINT	1	1	1	1		3/8F-G3/8
4	S70 C18 150	AIR VENT (AUTOMATIC)	1	1	1	1		
5	S70 C80 206	MANOMETER STAY	1	1	1	1		
6	S70 C20 205	MANOMETER	1	1	1	1		
7	S70 C34 406	3WAY VALVE	1	1	1	1		Small
8	S70 C20 452	STRAINER VALVE	1	1	1	1		
9	S70 C28 460	STRAINER PACKING	1	1	1	1		FOR STRAINER
10	S70 C42 441	BOOSTER HEATER	1			1	BH1, BH2	1 ϕ 230 V 2 kW
10	S70 C43 441	BOOSTER HEATER		1			BH1, BH2	
10	S70 C44 441	BOOSTER HEATER			1			
11	—	BOOSTER HEATER STAY	1	1		1		[RK00L196G01]
11	—	BOOSTER HEATER STAY			1			[RK00B922G01]
12	S70 C10 358	DRAIN COCK/AIR VENT (WATER CAP ASSY 320)	4	4	4	4		FOR PRIMARY/ SANITARY CIRCUIT
13	S70 C20 356	PUMP VALVE	1	1	1	1		
14	S70 C10 527	DRAIN HOSE				1		
15	S70 C20 529	DRAIN PAN ASSY				1		
16	S70 C11 355	WATER PUMP	1	1	1		MP1	FOR PRIMARY CIRCUIT
16	S70 C13 355	WATER PUMP				1		
17	S70 C90 408	WATER COIL ASSY (W)	1	1	1	1		
18	S70 C60 357	SCALE TRAP	1	1	1	1		
19	S70 C05 355	WATER PUMP	1	1	1	1	MP4	FOR SANITARY CIRCUIT
20	S70 C74 266	FLOW SENSOR (body & Cable)	1	1	1	1		
21	—	TANK CUSHION TOP	1	1	1	1		[RK25A422G02]
22	S70 C15 402	EXPANSION VESSEL	1	1	1	1		12 L
23	—	EXPANSION VESSEL CUSHION	1	1	1	1		[RK25A423G01]
24	S70 C69 202	THERMISTOR (FLOW WATER TEMP & RETURN WATER TEMP)	1	1	1	1	THW1/2	
25	S70 C55 460	GASKET 1"	4	4	4	4		FOR CONNECTION OF WATER CIRCUIT
26	S70 C66 460	GASKET 3/4"	7	7	7	7		FOR CONNECTION OF WATER CIRCUIT
27	S70 C77 460	GASKET 3/8"	1	1	1	1		FOR ONLY EXPANSION VESSEL
28	S70 C88 460	GASKET 1/4"	1	1	1	1		FOR ONLY MANOMETER
29	S70 C23 460	O-RING	13	13	13	13		BLACK
30	S70 C01 800	GREASE	1*	1*	1*	1*		FOR QUICK CONNECTION/ 100g
31	S70 C10 465	FASTENER	13	13	13	13		FOR QUICK CONNECTION
32	S70 C45 097	ADJUST BOLT	4	4	4	4		ACCESSORY
33	S70 C26 460	O-RING	2	2	2	2		BLACK/ FOR FLOW SENSOR, 3WAY VALVE (Large)
34	S70 C30 460	O-RING	4	4	4	4		BLACK/ FOR 3WAY VALVE (Small), TANK
35	S70 C20 465	FASTENER	2	2	2	2		FOR FLOW SENSOR, 3WAY VALVE (Large)
36	S70 C40 465	FASTENER	4	4	4	4		FOR 3WAY VALVE (Small), TANK

Do not reuse the O-ring or strainer packing that was once removed, but be sure to replace with a new one.
 * Apply grease appropriately on the O-ring for the quick connection in the unit.

EHPT20X-MED.UK
EHPT20X-YM9ED.UK
ERPT20X-V2MD.UK

EHPT20X-VM6D.UK
EHPT20X-TM9D.UK
ERPT20X-V6MD.UK

EHPT20X-YM9D.UK
ERPT20X-MD.UK



1. The part quantity below indicates the required number of pieces per unit.
2. The circled No. indicates that the part is not shown in the figure

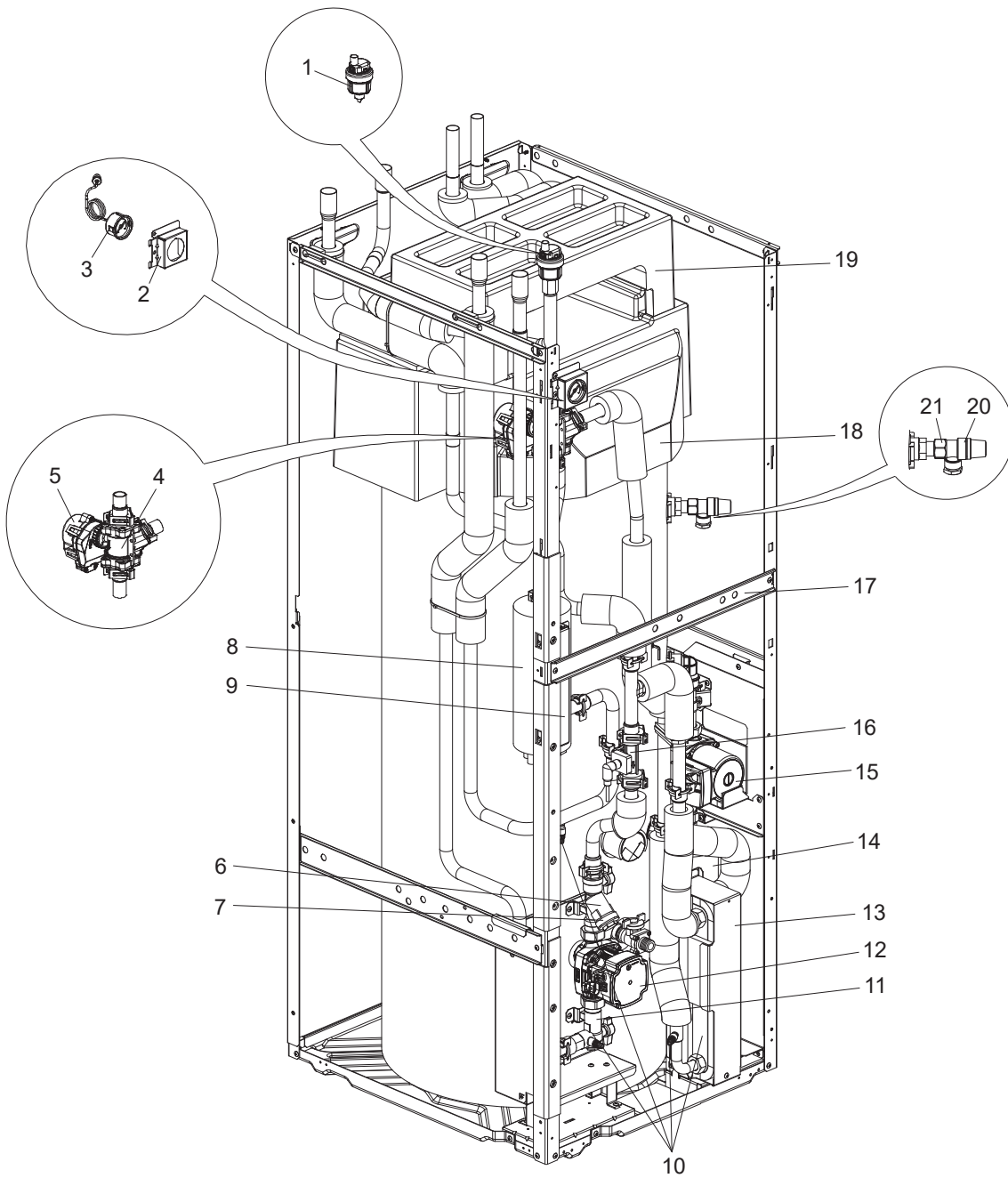
No.	Parts No.	Parts name	EHPT20X-MED.UK	EHPT20X-VM6D.UK	EHPT20X-YM9D.UK	EHPT20X-YM9ED.UK	EHPT20X-TM9D.UK	ERPT20X-MD.UK	ERPT20X-V2MD.UK	ERPT20X-V6MD.UK	Wiring Diagram Symbol	Remarks [Drawing No.]
1	S70 C30 404	PRESSURE RELIEF VALVE	1	1	1	1	1	1	1	1		10 bar/ FOR SANITARY SIDE
2	S70 C70 096	FLARE JOINT	1	1	1	1	1	1	1	1		5/8F-R1/2
3	S70 C50 096	FLARE JOINT		1	1		1	1	1	1		3/8F-G3/8/2
4	S70 C18 150	AIR VENT (AUTOMATIC)	1	1	1	1	1	1	1	1		



No.	Parts No.	Parts name	EHPT20X-MED.UK	EHPT20X-VM6D.UK	EHPT20X-YM9D.UK	EHPT20X-YM9ED.UK	EHPT20X-TM9D.UK	ERPT20X-IMD.UK	ERPT20X-V2MD.UK	ERPT20X-V6MD.UK	Wiring Diagram Symbol	Remarks [Drawing No.]
5	S70 C80 206	MANOMETER STAY	1	1	1	1	1	1	1	1		
6	S70 C20 205	MANOMETER	1	1	1	1	1	1	1	1		
7	S70 C45 762	3WAY VALVE	1	1	1	1	1	1	1	1		5HP
8	S70 C45 762	3WAY VALVE (MOTOR)	1	1	1	1	1	1	1	1		
9	S70 C20 452	STRAINER VALVE	1	1	1	1	1	1	1	1		
10	S70 C28 460	STRAINER PACKING	1	1	1	1	1	1	1	1		FOR STRAINER
11	S70 C41 441	BOOSTER HEATER	1					1			BH1	
11	S70 C42 441	BOOSTER HEATER							1		BH1, BH2	1 ϕ 230 V 2 kW
11	S70 C43 441	BOOSTER HEATER		1						1	BH1, BH2	
11	S70 C44 441	BOOSTER HEATER			1	1						
11	S70 C45 441	BOOSTER HEATER					1					
12	—	BOOSTER HEATER STAY	1	1				1	1	1		[RK00L196G01]
12	—	BOOSTER HEATER STAY			1	1	1					[RK00B922G01]
13	S70 C10 358	DRAIN COCK/AIR VENT (WATER CAP ASSY 320)	4	4	4	4	4	4	4	4		FOR PRIMARY/ SANITARY CIRCUIT
14	S70 C20 356	PUMP VALVE	1	1	1	1	1	1	1	1		
15	S70 C10 527	DRAIN HOSE						1	1	1		
16	S70 C20 529	DRAIN PAN ASSY						1	1	1		
17	S70 C85 408	WATER COIL ASSY (W)	1	1	1	1	1	1	1	1		
18	S70 C60 357	SCALE TRAP	1	1	1	1	1	1	1	1		
19	S70 C11 355	WATER PUMP	1	1	1	1	1				MP1	FOR PRIMARY CIRCUIT
19	S70 C13 355	WATER PUMP						1	1	1		
20	S70 C74 266	FLOW SENSOR (body & Cable)	1	1	1	1	1	1	1	1		
21	S70 C05 355	WATER PUMP	1	1	1	1	1	1	1	1	MP4	FOR SANITARY CIRCUIT
22	—	DIV FRAME H	1	1	1	1	1	1	1	1		[BK02N520G03]
23	—	TANK CUSHION TOP	1	1	1	1	1	1	1	1		[RK25A422G02]
24	S70 C15 402	EXPANSION VESSEL		1	1		1	1	1	1		12 L
25	—	EXPANSION VESSEL CUSHION	1	1	1	1	1	1	1	1		[RK25A423G01]
26	S70 C69 202	THERMISTOR (FLOW WATER TEMP & RETURN WATER TEMP)	1	1	1	1	1	1	1	1	THW1/2	
27	S70 C55 460	GASKET 1"	4	4	4	4	4	4	4	4		FOR CONNECTION OF WATER CIRCUIT
28	S70 C66 460	GASKET 3/4"	7	7	7	7	7	7	7	7		FOR CONNECTION OF WATER CIRCUIT
29	S70 C77 460	GASKET 3/8"		1	1		1	1	1	1		FOR ONLY EXPANSION VESSEL
30	S70 C88 460	GASKET 1/4"	1	1	1	1	1	1	1	1		FOR ONLY MANOMETER
31	S70 C23 460	O-RING	12	12	12	12	12	12	12	12		BLACK
32	S70 C01 800	GREASE	1*	1*	1*	1*	1*	1*	1*	1*		FOR QUICK CONNECTION
33	S70 C10 465	FASTENER	12	12	12	12	12	12	12	12		FOR QUICK CONNECTION
34	S70 C45 097	ADJUST BOLT	4	4	4	4	4	4	4	4		ACCESSORY
35	S70 C26 460	O-RING	5	5	5	5	5	5	5	5		BLACK/ FOR FLOW SENSOR, 3WAY VALVE (Large)
36	S70 C30 460	O-RING	1	1	1	1	1	1	1	1		BLACK/ FOR 3WAY VALVE (Small), TANK
37	S70 C20 465	FASTENER	5	5	5	5	5	5	5	5		FOR FLOW SENSOR, 3WAY VALVE (Large)
38	S70 C40 465	FASTENER	1	1	1	1	1	1	1	1		FOR 3WAY VALVE(Small),TANK

Do not reuse the O-ring or strainer packing that was once removed, but be sure to replace with a new one.
* Apply grease appropriately on the O-ring for the quick connection in the unit.

EHPT20X-MHEDW.UK



1. The part quantity below indicates the required number of pieces per unit.
2. The circled No. indicates that the part is not shown in the figure

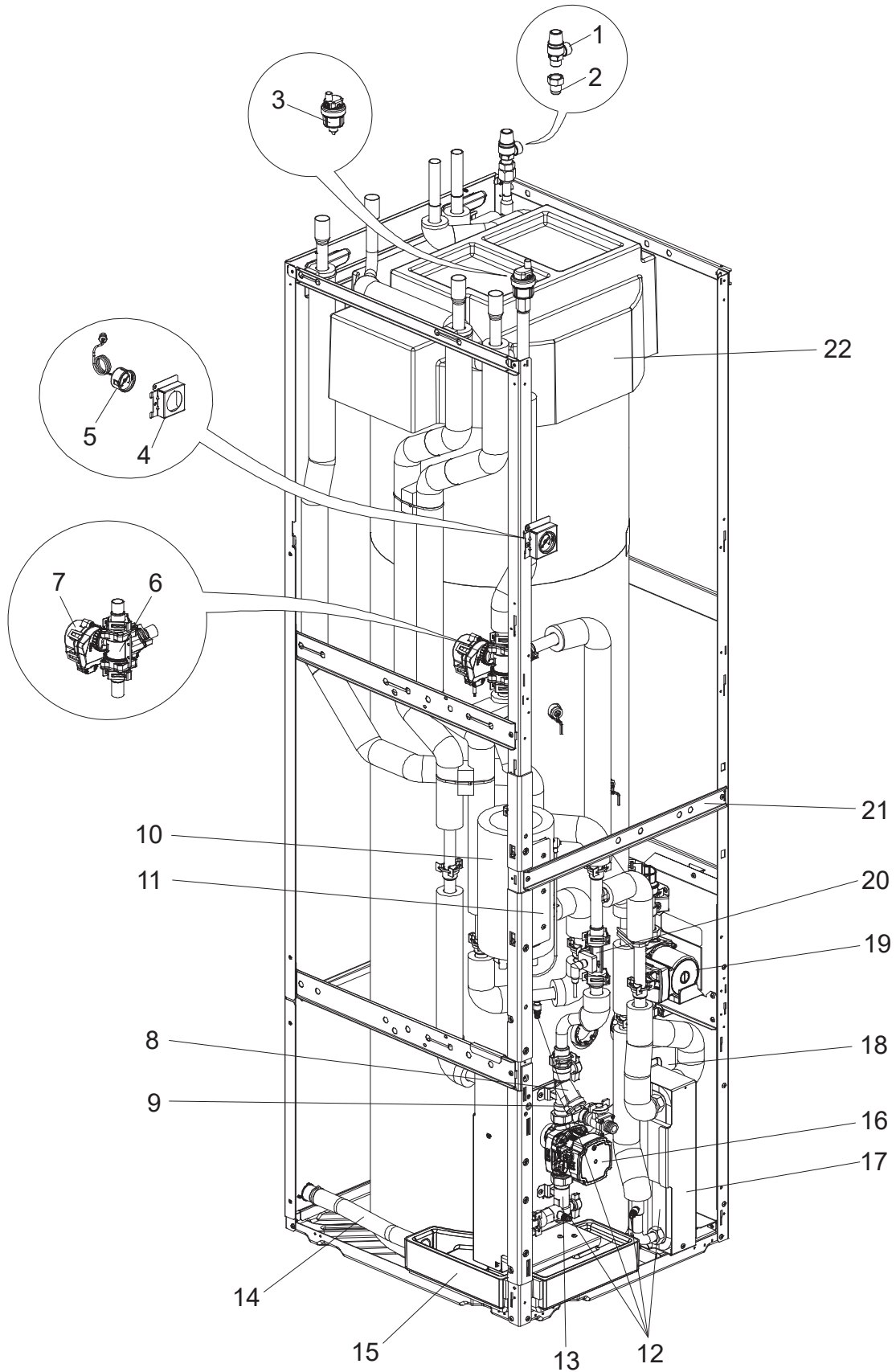
No.	Parts No.	Parts name	EHPT20X-MHEDW.UK	Wiring Diagram Symbol	Remarks [Drawing No.]
1	S70 C18 150	AIR VENT (AUTOMATIC)	1		
2	S70 C80 206	MANOMETER STAY	1		
3	S70 C20 205	MANOMETER	1		
4	S70 C45 762	3WAY VALVE	1		5HP
5	S70 C45 762	3WAY VALVE (MOTOR)	1		
6	S70 C20 452	STRAINER VALVE	1		
7	S70 C28 460	STRAINER PACKING	1		FOR STRAINER
8	S70 C41 441	BOOSTER HEATER	1	BH1	
9	—	BOOSTER HEATER STAY	1		[RK00L196G01]
10	S70 C10 358	DRAIN COCK/AIR VENT (WATER CAP ASSY 320)	4		FOR PRIMARY/ SANITARY CIRCUIT
11	S70 C20 356	PUMP VALVE	1		
12	S70 C11 355	WATER PUMP	1	MP1	FOR PRIMARY CIRCUIT
13	S70 C85 408	WATER COIL ASSY (W)	1		
14	S70 C60 357	SCALE TRAP	1		
15	S70 C05 355	WATER PUMP	1	MP4	FOR SANITARY CIRCUIT
16	S70 C74 266	FLOW SENSOR (body & Cable)	1		
17	—	DIV FRAME H	1		[BK02N520G03]
18	—	TANK CUSHION TOP	1		[RK25A422G02]
19	—	EXPANSION VESSEL CUSHION	1		[RK25A423G01]
20	S70 C19 404	TEMPERATURE AND PRESSURE RELIEF VALVE	1		90°C/ 7bar, FOR TANK
21	S70 C20 405	JOINT	1		
22	S70 C69 202	THERMISTOR (FLOW WATER TEMP & RETURN WATER TEMP)	1	THW1/2	
23	S70 C55 460	GASKET 1"	2		FOR CONNECTION OF WATER CIRCUIT
24	S70 C66 460	GASKET 3/4"	2		FOR CONNECTION OF WATER CIRCUIT
25	S70 C88 460	GASKET 1/4"	1		FOR ONLY MANOMETER
26	S70 C20 460	PACKING WASHER 1"	2		FOR SANITARY SIDE OF UK MODEL
27	S70 C25 460	PACKING WASHER 3/4"	5		FOR SANITARY SIDE OF UK MODEL
28	S70 C23 460	O-RING	8		BLACK
29	S70 C30 460	O-RING	1		BLACK/ FOR 3WAY VALVE (Small), TANK
30	S70 C01 800	GREASE	1*		FOR QUICK CONNECTION
31	S70 C10 465	FASTENER	13		FOR QUICK CONNECTION
32	S70 C45 097	ADJUST BOLT	4		ACCESSORY
33	S70 C26 460	O-RING	5		BLACK/ FOR FLOW SENSOR, 3WAY VALVE (Large)
34	S70 C27 460	O-RING	5		ORANGE/ FOR SANITARY SIDE OF UK MODEL
35	S70 C20 465	FASTENER	5		FOR FLOW SENSOR, 3WAY VALVE (Large)
36	S70 C40 465	FASTENER	1		FOR 3WAY VALVE(Small), TANK

Do not reuse the O-ring or strainer packing that was once removed, but be sure to replace with a new one.
 * Apply grease appropriately on the O-ring for the quick connection in the unit.

EHPT30X-MED.UK

EHPT30X-YM9ED.UK

ERPT30X-VM2ED.UK



1. The part quantity below indicates the required number of pieces per unit.
2. The circled No. indicates that the part is not shown in the figure

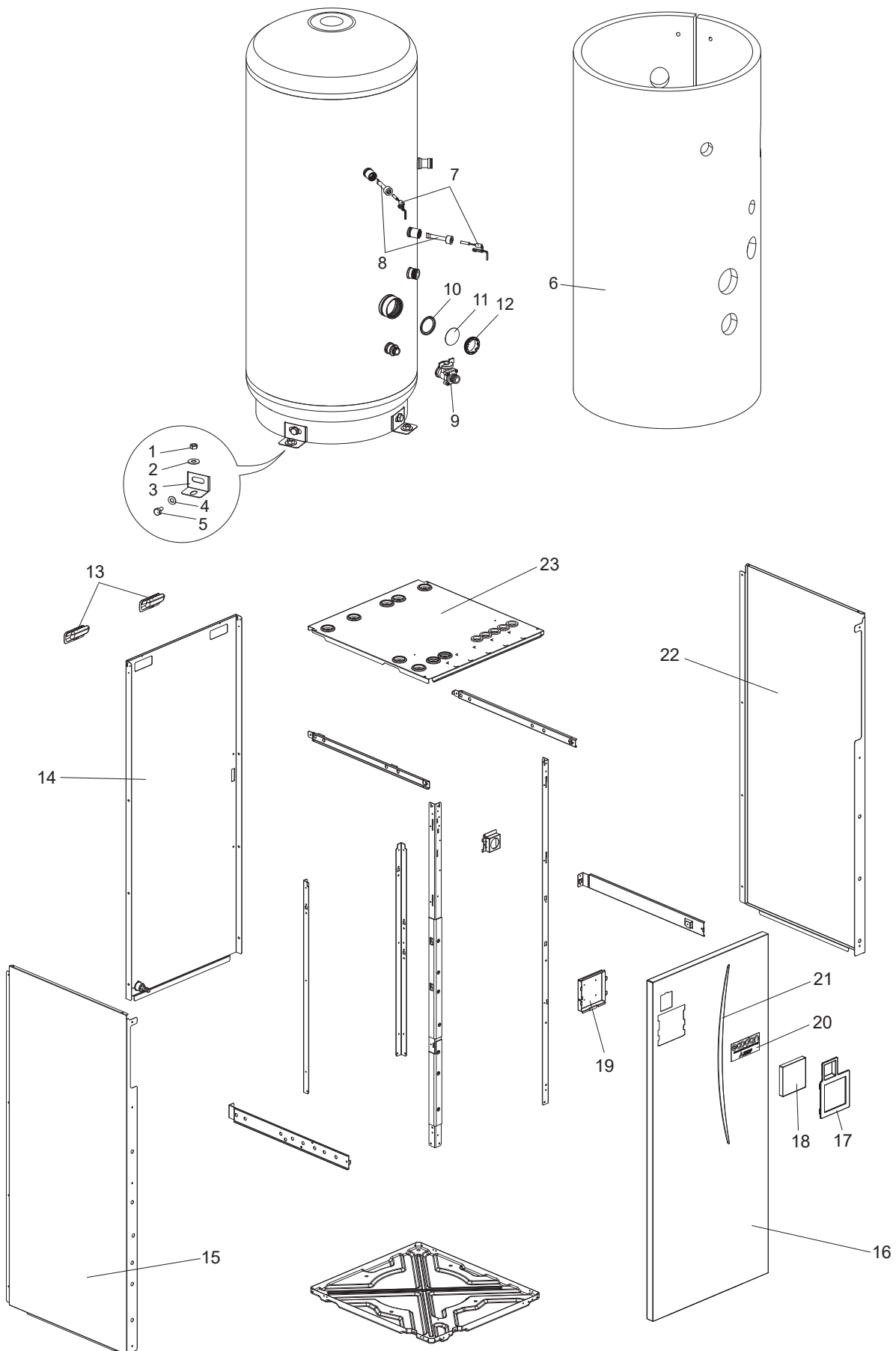
No.	Parts No.	Parts name	EHPT30X-MED.UK	EHPT30X-VM9ED.UK	ERPT30X-VM2ED.UK	Wiring Diagram Symbol	Remarks [Drawing No.]
1	S70 C30 404	PRESSURE RELIEF VALVE	1	1	1		10 bar/ FOR SANITARY SIDE
2	S70 C70 096	FLARE JOINT	1	1	1		5/8F-R1/2
3	S70 C18 150	AIR VENT (AUTOMATIC)	1	1	1		
4	S70 C80 206	MANOMETER STAY	1	1	1		
5	S70 C20 205	MANOMETER	1	1	1		
6	S70 C45 762	3WAY VALVE	1	1	1		5HP
7	S70 C45 762	3WAY VALVE (MOTOR)	1	1	1		
8	S70 C20 452	STRAINER VALVE	1	1	1		
9	S70 C28 460	STRAINER PACKING	1	1	1		FOR STRAINER
10	S70 C41 441	BOOSTER HEATER	1			BH1	1 ϕ 230 V 2 kW
10	S70 C42 441	BOOSTER HEATER			1	BH1, BH2	
10	S70 C44 441	BOOSTER HEATER		1			
11	—	BOOSTER HEATER STAY	1		1		[RK00L196G01]
11	—	BOOSTER HEATER STAY		1			[RK00B922G01]
12	S70 C10 358	DRAIN COCK/AIR VENT (WATER CAP ASSY 320)	4	4	4		FOR PRIMARY/ SANITARY CIRCUIT
13	S70 C20 356	PUMP VALVE	1	1	1		
14	S70 C10 527	DRAIN HOSE			1		
15	S70 C20 529	DRAIN PAN ASSY			1		
16	S70 C11 355	WATER PUMP	1	1		MP1	FOR PRIMARY CIRCUIT
16	S70 C13 355	WATER PUMP			1		
17	S70 C85 408	WATER COIL ASSY (W)	1	1	1		
18	S70 C60 357	SCALE TRAP	1	1	1		
19	S70 C05 355	WATER PUMP	1	1	1	MP4	FOR SANITARY CIRCUIT
20	S70 C74 266	FLOW SENSOR (body & Cable)	1	1	1		
21	—	DIV FRAME H	1	1	1		[BK02N520G03]
22	—	TANK CUSHION TOP	1	1	1		[RK25A412G02]
(23)	S70 C69 202	THERMISTOR (FLOW WATER TEMP & RETURN WATER TEMP)	1	1	1	THW1/2	
(24)	S70 C55 460	GASKET 1"	4	4	4		FOR CONNECTION OF WATER CIRCUIT
(25)	S70 C66 460	GASKET 3/4"	7	7	7		FOR CONNECTION OF WATER CIRCUIT
(26)	S70 C88 460	GASKET 1/4"	1	1	1		FOR ONLY MANOMETER
(27)	S70 C23 460	O-RING	14	14	14		BLACK
(28)	S70 C01 800	GREASE	1*	1*	1*		FOR QUICK CONNECTION
(29)	S70 C10 465	FASTENER	14	14	14		FOR QUICK CONNECTION
(30)	S70 C45 097	ADJUST BOLT	4	4	4		ACCESSORY
(31)	S70 C26 460	O-RING	5	5	5		BLACK/ FOR FLOW SENSOR, 3WAY VALVE (Large)
(32)	S70 C30 460	O-RING	1	1	1		BLACK/ FOR 3WAY VALVE (Small), TANK
(33)	S70 C20 465	FASTENER	5	5	5		FOR FLOW SENSOR, 3WAY VALVE (Large)
(34)	S70 C40 465	FASTENER	1	1	1		FOR 3WAY VALVE(Small),TANK

Do not reuse the O-ring or strainer packing that was once removed, but be sure to replace with a new one.
 * Apply grease appropriately on the O-ring for the quick connection in the unit.

EHST17D-VM2D.UK
EHPT17X-VM6D.UK

ERST17D-VM2D.UK
EHPT17X-VM9D.UK

EHPT17X-VM2D.UK
ERPT17X-VM2D.UK



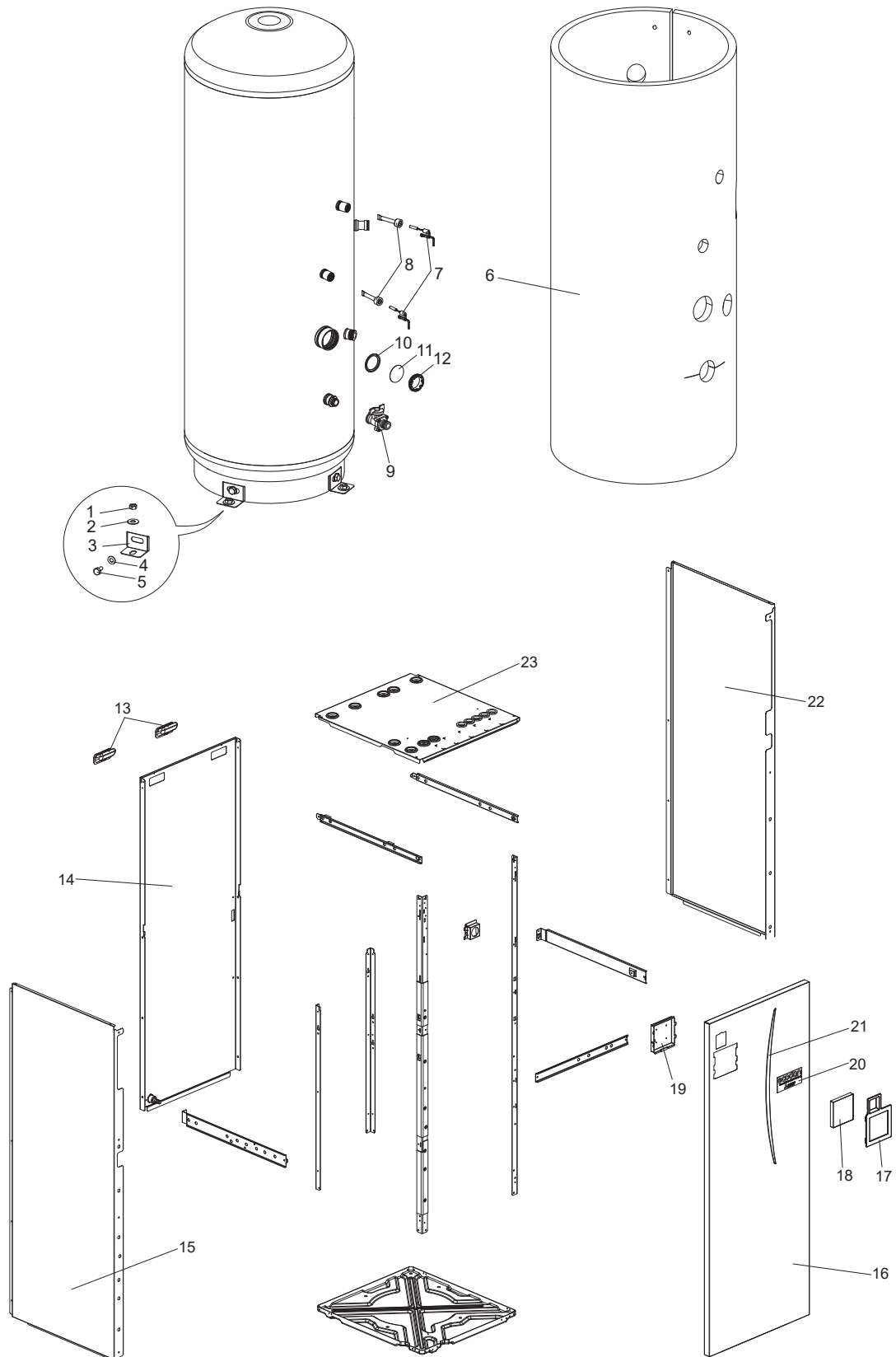
1. The part quantity below indicates the required number of pieces per unit.
2. The circled No. indicates that the part is not shown in the figure.

No.	Parts No.	Parts name	EHST17D-VM2D.UK	ERST17D-VM2D.UK	EHPT17X-VM2D.UK	EHPT17X-VM6D.UK	EHPT17X-VM9D.UK	ERPT17X-VM2D.UK	Wiring Diagram Symbol	Remarks [Drawing No.]
1	S70 C10 097	NUT	3	3	3	3	3	3		
2	S70 C61 097	WASHER	3	3	3	3	3	3		
3	S70 C30 042	TANK LEG	3	3	3	3	3	3		
4	S70 C20 097	WASHER	3	3	3	3	3	3		
5	S70 C30 097	BOLT	3	3	3	3	3	3		
6	S70 C65 042	TANK INSULATOR	1	1	1	1	1	1		
7	S70 C68 202	THERMISTOR (TANK WATER TEMP)	1	1	1	1	1	1	THW5	
8	S70 C11 525	STAT POCKET ASSEMBLY	1	1	1	1	1	1		
9	S70 C40 357	DRAIN COCK	1	1	1	1	1	1		FOR TANK
10	S70 C33 460	ELEMENT PLATE GASKET	1	1	1	1	1	1		
11	S70 C40 446	BLANKING PLATE	1	1	1	1	1	1		
12	S70 C60 097	BACKNUT	1	1	1	1	1	1		
13	S70 30L 655	HANDLE	2	2	2	2	2	2		
14	S70 C22 661	BACK PANEL			1	1	1			
14	S70 C26 661	BACK PANEL	1	1				1		
15	S70 C67 662	SIDE PANEL L	1	1	1	1	1	1		
16	S70 C35 668	FRONT PANEL	1	1	1	1	1	1		
17	—	MAIN REMOTE CONTROLLER SUPPORT	1	1	1	1	1	1		[BK00R897G01]
18	S70 C20 200	MAIN REMOTE CONTROLLER ASSY	1	1	1	1	1	1		
19	S70 C31 710	MAIN REMOTE CONTROLLER HOLDER	1	1	1	1	1	1		
20	S70 C25 699	BRAND LABEL	1	1	1	1	1	1		
21	S70 C30 699	LEAF LABEL	1	1	1	1	1	1		
22	S70 C72 662	SIDE PANEL R	1	1	1	1	1	1		
23	S70 C29 641	TOP PANEL DWG	1	1						
23	S70 C27 641	TOP PANEL DWG			1	1	1	1		
②4	S70 C21 699	WIRING DIAGRAM FOR FRONT PANEL	1	1	1			1		
②4	S70 C22 699	WIRING DIAGRAM FOR FRONT PANEL				1				
②4	S70 C23 699	WIRING DIAGRAM FOR FRONT PANEL					1			

EHST20C-MED.UK
 EHST20C-YM9D.UK
 ERST20C-VM2D.UK
 EHST20D-MED.UK
 EHST20D-YM9D.UK
 ERST20D-VM2D.UK

EHST20C-VM2D.UK
 EHST20C-YM9ED.UK
 EHST20D-VM2D.UK
 EHST20D-YM9ED.UK

EHST20C-VM6D.UK
 EHST20C-TM9D.UK
 EHST20D-VM6D.UK
 EHST20D-TM9D.UK



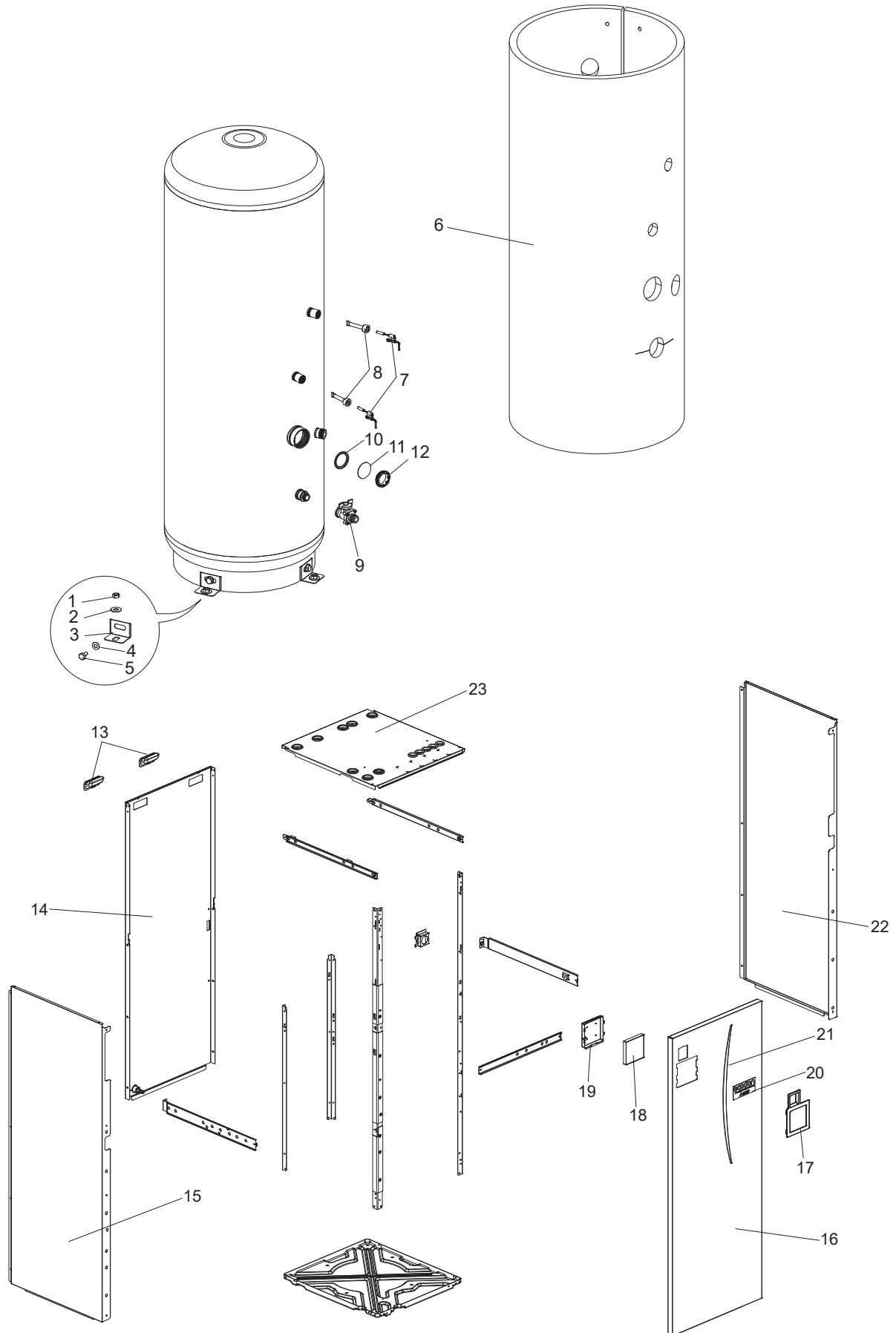
1. The part quantity below indicates the required number of pieces per unit.
2. The circled No. indicates that the part is not shown in the figure.

No.	Parts No.	Parts name															Wiring Diagram Symbol	Remarks [Drawing No.]
			EHST20C-MED.UK	EHST20C-VM2D.UK	EHST20C-VM6D.UK	EHST20C-YM9D.UK	EHST20C-YM9ED.UK	EHST20C-TM9D.UK	ERST20C-VM2D.UK	EHST20D-MED.UK	EHST20D-VM2D.UK	EHST20D-VM6D.UK	EHST20D-YM9D.UK	EHST20D-YM9ED.UK	ERST20D-TM9D.UK			
1	S70 C10 097	NUT	3	3	3	3	3	3	3	3	3	3	3	3	3			
2	S70 C61 097	WASHER	3	3	3	3	3	3	3	3	3	3	3	3	3			
3	S70 C30 042	TANK LEG	3	3	3	3	3	3	3	3	3	3	3	3	3			
4	S70 C20 097	WASHER	3	3	3	3	3	3	3	3	3	3	3	3	3			
5	S70 C30 097	BOLT	3	3	3	3	3	3	3	3	3	3	3	3	3			
6	S70 C75 042	TANK INSULATOR	1	1	1	1	1	1	1	1	1	1	1	1	1			
7	S70 C68 202	THERMISTOR (TANK WATER TEMP)	1	1	1	1	1	1	1	1	1	1	1	1	1	THW5		
8	S70 C11 525	STAT POCKET ASSEMBLY	1	1	1	1	1	1	1	1	1	1	1	1	1			
9	S70 C40 357	DRAIN COCK	1	1	1	1	1	1	1	1	1	1	1	1	1		FOR TANK	
10	S70 C33 460	ELEMENT PLATE GASKET	1	1	1	1	1	1	1	1	1	1	1	1	1			
11	S70 C40 446	BLANKING PLATE	1	1	1	1	1	1	1	1	1	1	1	1	1		FOR TANK	
12	S70 C60 097	BACKNUT	1	1	1	1	1	1	1	1	1	1	1	1	1			
13	S70 30L 655	HANDLE	2	2	2	2	2	2	2	2	2	2	2	2	2			
14	S70 C23 661	BACK PANEL	1	1	1	1	1	1		1	1	1	1	1	1			
14	S70 C25 661	BACK PANEL							1						1			
15	S70 C71 662	SIDE PANEL L	1	1	1	1	1	1	1	1	1	1	1	1	1			
16	S70 C22 668	FRONT PANEL	1	1	1	1	1	1	1	1	1	1	1	1	1			
17	—	MAIN REMOTE CONTROLLER SUPPORT	1	1	1	1	1	1	1	1	1	1	1	1	1		[BK00R897G01]	
18	S70 C20 200	MAIN REMOTE CONTROLLER ASSY	1	1	1	1	1	1	1	1	1	1	1	1	1			
19	S70 C31 710	MAIN REMOTE CONTROLLER HOLDER	1	1	1	1	1	1	1	1	1	1	1	1	1			
20	S70 C25 699	BRAND LABEL	1	1	1	1	1	1	1	1	1	1	1	1	1			
21	S70 C30 699	LEAF LABEL	1	1	1	1	1	1	1	1	1	1	1	1	1			
22	S70 C74 662	SIDE PANEL R	1	1	1	1	1	1	1	1	1	1	1	1	1			
23	S70 C30 641	TOP PANEL DWG	1	1	1	1	1	1	1	1	1	1	1	1	1			
②4	S70 C21 699	WIRING DIAGRAM FOR FRONT PANEL		1					1		1					1		
②4	S70 C22 699	WIRING DIAGRAM FOR FRONT PANEL			1							1						
②4	S70 C23 699	WIRING DIAGRAM FOR FRONT PANEL				1	1						1	1				
②4	S70 C24 699	WIRING DIAGRAM FOR FRONT PANEL						1								1		
②4	S70 C27 699	WIRING DIAGRAM FOR FRONT PANEL	1							1								

EHPT20X-MED.UK
EHPT20X-YM9ED.UK
ERPT20X-MD.UK

EHPT20X-VM6D.UK
EHPT20X-TM9D.UK
ERPT20X-V2MD.UK

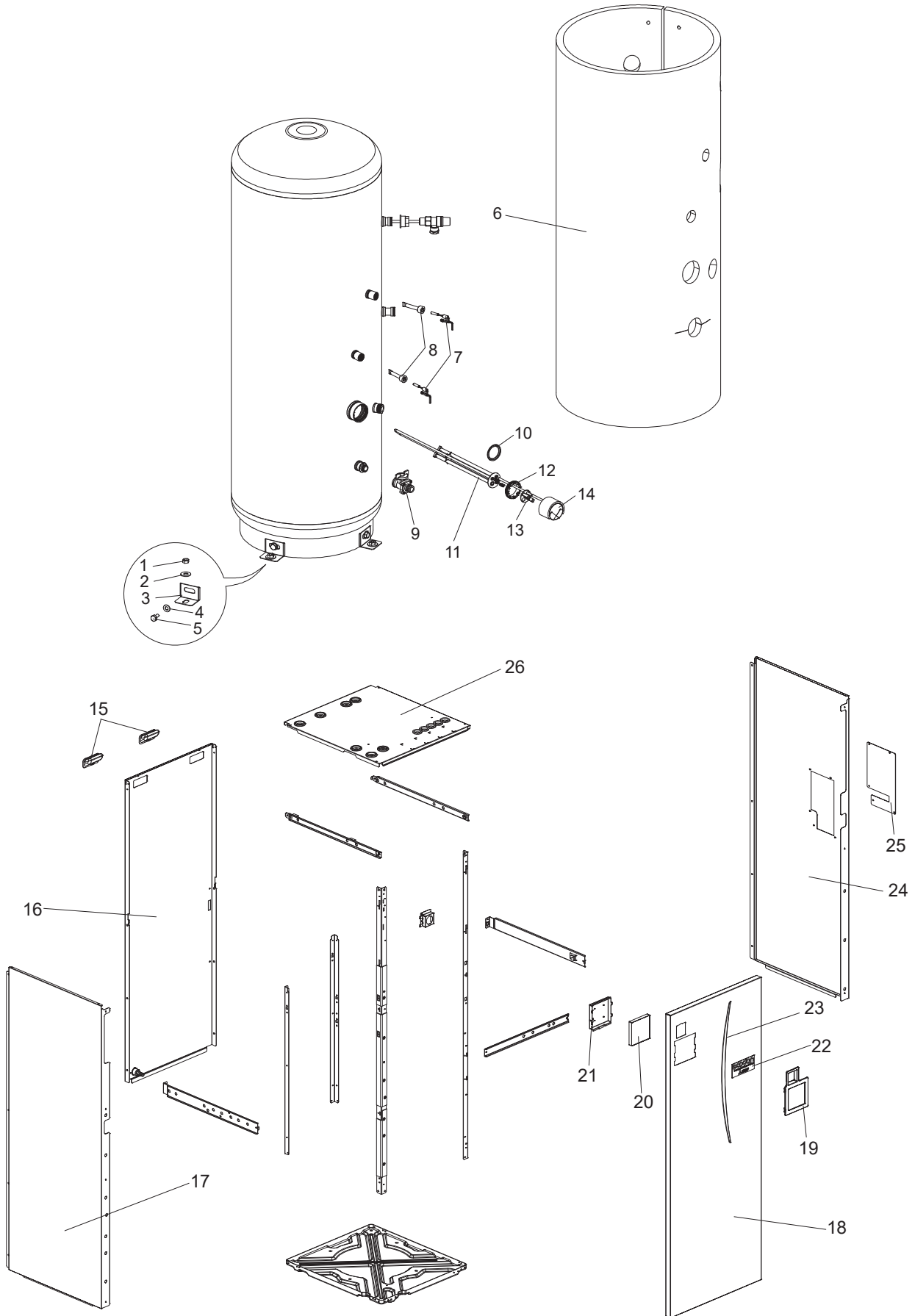
EHPT20X-YM9D.UK
ERPT20X-V6MD.UK



1. The part quantity below indicates the required number of pieces per unit.
2. The circled No. indicates that the part is not shown in the figure.

No.	Parts No.	Parts name	EHPT20X-MED.UK	EHPT20X-VM6D.UK	EHPT20X-YM9D.UK	EHPT20X-YM9ED.UK	EHPT20X-TM9D.UK	ERPT20X-MD.UK	ERPT20X-V2MD.UK	ERPT20X-V6MD.UK	Wiring Diagram Symbol	Remarks [Drawing No.]
1	S70 C10 097	NUT	3	3	3	3	3	3	3	3		
2	S70 C61 097	WASHER	3	3	3	3	3	3	3	3		
3	S70 C30 042	TANK LEG	3	3	3	3	3	3	3	3		
4	S70 C20 097	WASHER	3	3	3	3	3	3	3	3		
5	S70 C30 097	BOLT	3	3	3	3	3	3	3	3		
6	S70 C75 042	TANK INSULATOR	1	1	1	1	1	1	1	1		
7	S70 C68 202	THERMISTOR (TANK WATER TEMP)	1	1	1	1	1	1	1	1	THW5	
8	S70 C11 525	STAT POCKET ASSEMBLY	1	1	1	1	1	1	1	1		
9	S70 C40 357	DRAIN COCK	1	1	1	1	1	1	1	1		FOR TANK
10	S70 C33 460	ELEMENT PLATE GASKET	1	1	1	1	1	1	1	1		
11	S70 C40 446	BLANKING PLATE	1	1	1	1	1	1	1	1		FOR TANK
12	S70 C60 097	BACKNUT	1	1	1	1	1	1	1	1		
13	S70 30L 655	HANDLE	2	2	2	2	2	2	2	2		
14	S70 C23 661	BACK PANEL	1	1	1	1	1					
14	S70 C25 661	BACK PANEL						1	1	1		
15	S70 C71 662	SIDE PANEL L	1	1	1	1	1	1	1	1		
16	S70 C22 668	FRONT PANEL	1	1	1	1	1	1	1	1		
17	—	MAIN REMOTE CONTROLLER SUPPORT	1	1	1	1	1	1	1	1		[BK00R897G01]
18	S70 C20 200	MAIN REMOTE CONTROLLER ASSY	1	1	1	1	1	1	1	1		
19	S70 C31 710	MAIN REMOTE CONTROLLER HOLDER	1	1	1	1	1	1	1	1		
20	S70 C25 699	BRAND LABEL	1	1	1	1	1	1	1	1		
21	S70 C30 699	LEAF LABEL	1	1	1	1	1	1	1	1		
22	S70 C74 662	SIDE PANEL R	1	1	1	1	1	1	1	1		
23	S70 C26 641	TOP PANEL DWG	1	1	1	1	1	1	1	1		
(24)	S70 C21 699	WIRING DIAGRAM FOR FRONT PANEL							1			
(24)	S70 C22 699	WIRING DIAGRAM FOR FRONT PANEL		1						1		
(24)	S70 C23 699	WIRING DIAGRAM FOR FRONT PANEL			1	1						
(24)	S70 C24 699	WIRING DIAGRAM FOR FRONT PANEL					1					
(24)	S70 C27 699	WIRING DIAGRAM FOR FRONT PANEL	1					1				

EHPT20X-MHEDW.UK



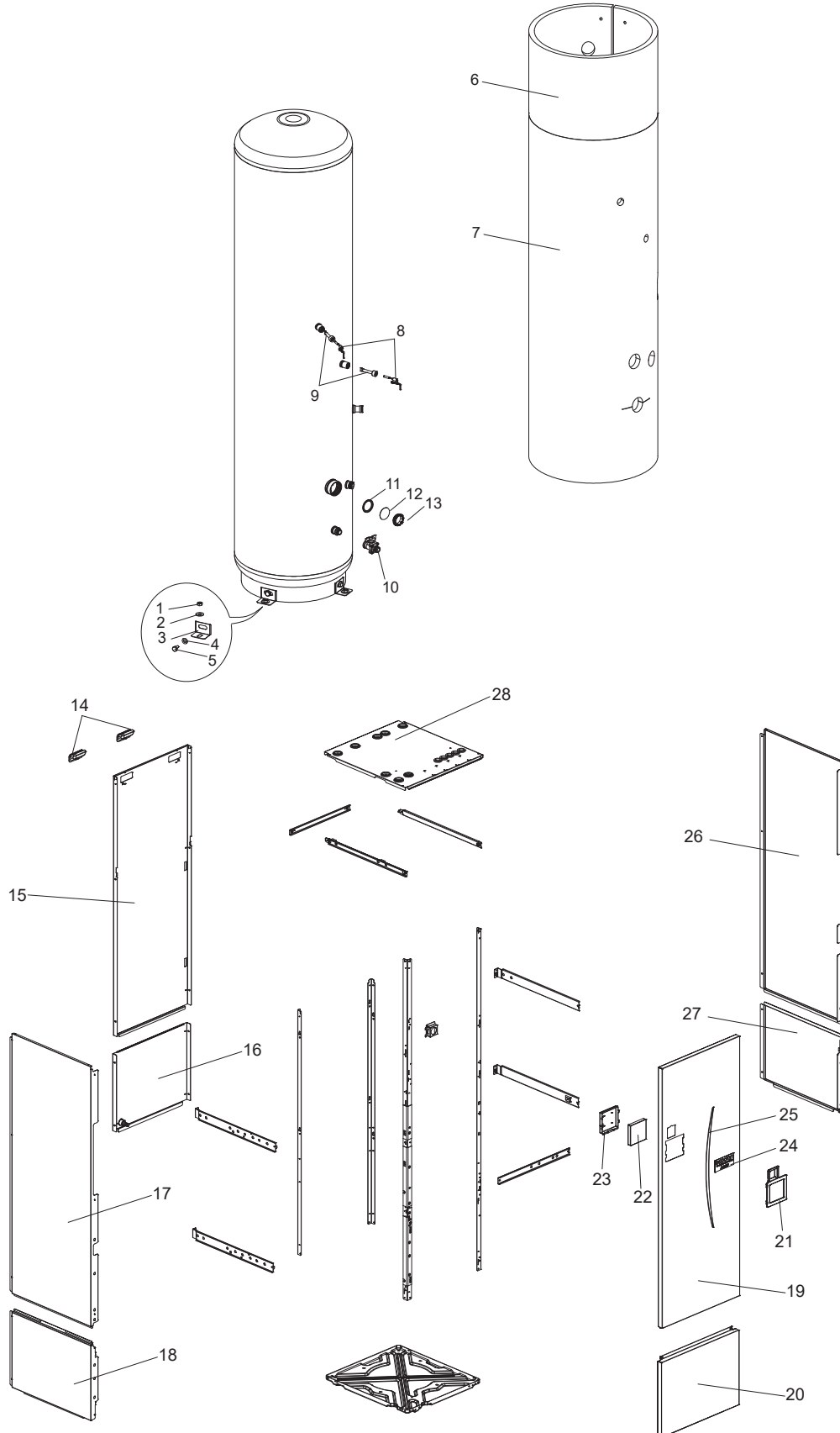
1. The part quantity below indicates the required number of pieces per unit.
2. The circled No. indicates that the part is not shown in the figure.

No.	Parts No.	Parts name	EHPT20X-MHEDW.UK	Wiring Diagram Symbol	Remarks [Drawing No.]
1	S70 C10 097	NUT	3		
2	S70 C61 097	WASHER	3		
3	S70 C30 042	TANK LEG	3		
4	S70 C20 097	WASHER	3		
5	S70 C30 097	BOLT	3		
6	S70 C75 042	TANK INSULATOR	1		
7	S70 C68 202	THERMISTOR (TANK WATER TEMP)	1	THW5	
8	S70 C11 525	STAT POCKET ASSEMBLY	1		
9	S70 C40 357	DRAIN COCK	1		FOR TANK
10	S70 C33 460	ELEMENT PLATE GASKET	1		
11	S70 C50 445	IMMERSION HEATER	1	IH	
12	S70 C60 097	BACKNUT	1		
13	S70 C33 461	ELEMENT PLATE TERMINAL COVER	1		
14	S70 C08 201	THERMOSTAT	1	IHT	
15	S70 30L 655	HANDLE	2		
16	S70 C23 661	BACK PANEL	1		
17	S70 C71 662	SIDE PANEL L	1		
18	S70 C22 668	FRONT PANEL	1		
19	—	MAIN REMOTE CONTROLLER SUPPORT	1		[BK00R897G01]
20	S70 C20 200	MAIN REMOTE CONTROLLER ASSY	1		
21	S70 C31 710	MAIN REMOTE CONTROLLER HOLDER	1		
22	S70 C25 699	BRAND LABEL	1		
23	S70 C30 699	LEAF LABEL	1		
24	S70 C76 662	SIDE PANEL R	1		
25	S70 C40 670	VM PLATE	1		
26	S70 C25 641	TOP PANEL DWG	1		
(27)	S70 C26 699	WIRING DIAGRAM FOR FRONT PANEL	1		

**EHST30C-MED.UK
ERST30C-VM2ED.UK
EHST30D-MED.UK
ERST30D-VM2ED.UK
EHPT30X-MED.UK**

**EHST30C-YM9ED.UK
EHST30C-VM6ED.UK
EHST30D-YM9ED.UK
EHST30D-VM6ED.UK
EHPT30X-YM9ED.UK**

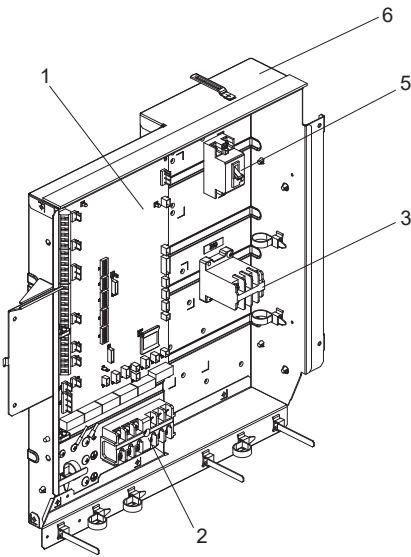
**EHST30C-TM9ED.UK
EHST30D-TM9ED.UK
ERPT30X-VM2ED.UK**



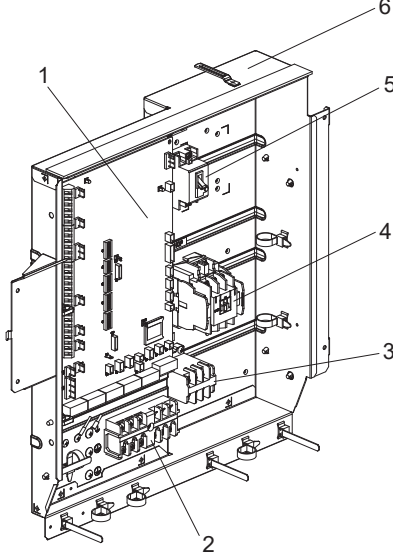
1. The part quantity below indicates the required number of pieces per unit.
2. The circled No. indicates that the part is not shown in the figure.

No.	Parts No.	Parts name													Wiring Diagram Symbol	Remarks [Drawing No.]
			EHST30C-MED.UK	EHST30C-YM9ED.UK	EHST30C-TM9ED.UK	ERST30C-VM2ED.UK	EHST30C-VM6ED.UK	EHST30D-MED.UK	EHST30D-YM9ED.UK	EHST30D-TM9ED.UK	ERST30D-VM2ED.UK	EHST30D-VM6ED.UK	EHPT30X-MED.UK	EHPT30X-YM9ED.UK		
1	S70 C10 097	NUT	3	3	3	3	3	3	3	3	3	3	3	3		
2	S70 C61 097	WASHER	3	3	3	3	3	3	3	3	3	3	3	3		
3	S70 C30 042	TANK LEG	3	3	3	3	3	3	3	3	3	3	3	3		
4	S70 C20 097	WASHER	3	3	3	3	3	3	3	3	3	3	3	3		
5	S70 C30 097	BOLT	3	3	3	3	3	3	3	3	3	3	3	3		
6	S70 C35 042	TANK INSULATOR TOP	1	1	1	1	1	1	1	1	1	1	1	1		
7	S70 C45 042	TANK INSULATOR UNDER	1	1	1	1	1	1	1	1	1	1	1	1		
8	S70 C68 202	THERMISTOR (TANK WATER TEMP)	1	1	1	1	1	1	1	1	1	1	1	1	THW5	
9	S70 C11 525	STAT POCKET ASSEMBLY	1	1	1	1	1	1	1	1	1	1	1	1		
10	S70 C40 357	DRAIN COCK	1	1	1	1	1	1	1	1	1	1	1	1		FOR TANK
11	S70 C33 460	ELEMENT PLATE GASKET	1	1	1	1	1	1	1	1	1	1	1	1		
12	S70 C40 446	BLANKING PLATE	1	1	1	1	1	1	1	1	1	1	1	1		FOR TANK
13	S70 C60 097	BACKNUT	1	1	1	1	1	1	1	1	1	1	1	1		
14	S70 30L 655	HANDLE	2	2	2	2	2	2	2	2	2	2	2	2		
15	S70 C20 661	BACK PANEL (TOP)	1	1	1	1	1	1	1	1	1	1	1	1		
16	S70 C21 661	BACK PANEL (UNDER)	1	1	1		1	1	1	1		1	1	1		
16	S70 C28 661	BACK PANEL (UNDER)				1					1			1		
17	S70 C63 662	SIDE PANEL L -TOP	1	1	1	1	1	1	1	1	1	1	1	1		
18	S70 C61 662	SIDE PANEL L-UNDER ASSY	1	1	1	1	1	1	1	1	1	1	1	1		
19	S70 C33 668	FRONT PANEL-TOP	1	1	1	1	1	1	1	1	1	1	1	1		
20	S70 C32 668	FRONT PANEL-UNDER	1	1	1	1	1	1	1	1	1	1	1	1		
21	—	MAIN REMOTE CONTROLLER SUPPORT	1	1	1	1	1	1	1	1	1	1	1	1		[BK00R897G01]
22	S70 C20 200	MAIN REMOTE CONTROLLER ASSY	1	1	1	1	1	1	1	1	1	1	1	1		
23	S70 C31 710	MAIN REMOTE CONTROLLER HOLDER	1	1	1	1	1	1	1	1	1	1	1	1		
24	S70 C25 699	BRAND LABEL	1	1	1	1	1	1	1	1	1	1	1	1		
25	S70 C30 699	LEAF LABEL	1	1	1	1	1	1	1	1	1	1	1	1		
26	S70 C66 662	SIDE PANEL R - TOP	1	1	1	1	1	1	1	1	1	1	1	1		
27	S70 C64 662	SIDE PANEL R - UNDER	1	1	1	1	1	1	1	1	1	1	1	1		
28	S70 C30 641	TOP PANEL DWG	1	1	1	1	1	1	1	1	1	1				
28	S70 C26 641	TOP PANEL DWG											1	1	1	
②9	S70 C21 699	WIRING DIAGRAM FOR FRONT PANEL				1					1				1	
②9	S70 C22 699	WIRING DIAGRAM FOR FRONT PANEL					1					1				
②9	S70 C23 699	WIRING DIAGRAM FOR FRONT PANEL		1					1					1		
②9	S70 C24 699	WIRING DIAGRAM FOR FRONT PANEL			1					1						
②9	S70 C27 699	WIRING DIAGRAM FOR FRONT PANEL	1						1					1		

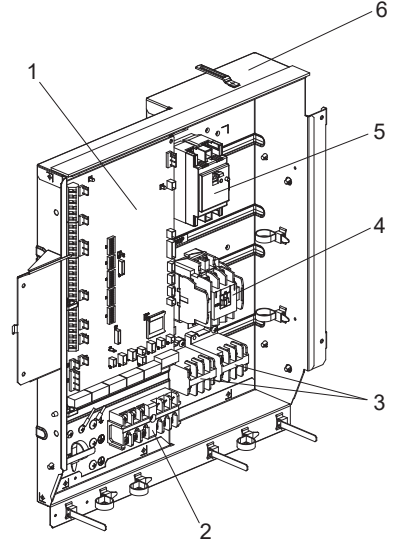
MHEDW



VM2D



VM6D



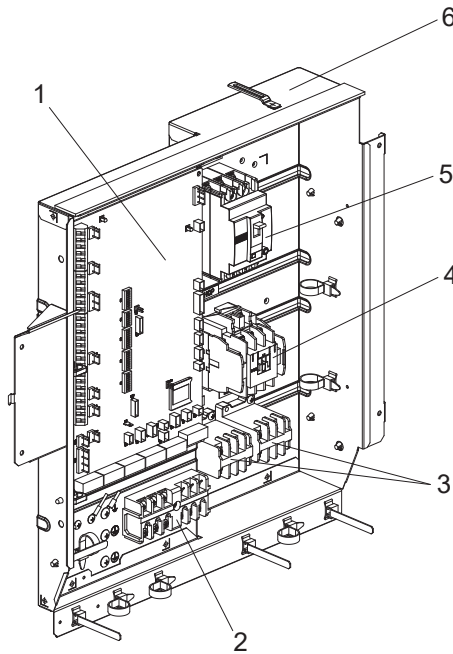
1. The part quantity below indicates the required number of pieces per unit.
2. The circled No. indicates that the part is not shown in the figure.

No.	Parts No.	Parts name																		Remarks [Drawing No.]				
			EHST20C-MED.UK	EHST20D-MED.UK	EHST30C-MED.UK	EHST30D-MED.UK	EHST17D-VM2D.UK	ERST17D-VM2D.UK	EHST20C-VM2D.UK	ERST20C-VM2D.UK	EHST20D-VM2D.UK	ERST20D-VM2D.UK	ERST30C-VM2ED.UK	ERST30D-VM2ED.UK	EHPT17X-VM2D.UK	ERPT17X-VM2D.UK	EHPT20X-MED.UK	EHPT20X-MHEDW.UK	ERPT20X-MD.UK		ERPT20X-VM2D.UK	EHPT30X-MED.UK	ERPT30X-VM2ED.UK	
1	S70 C85 315	ATW CONTROLLER	1	1	1	1	1	1	1	1	1	1	1	1	1	1	1	1	1	1	1	1	1	
2	S70 C20 515	TERMINAL BED	1	1	1	1	1	1	1	1	1	1	1	1	1	1	1	1	1	1	1	1	1	6P (#250LNE+S123)
3	S70 C39 708	CONTACTOR					1	1	1	1	1	1	1	1	1	1		1	1		1	1	30 A	
4	S70 C49 708	CONTACTOR					1	1	1	1	1	1	1	1	1	1				1	1		45 A	
5	S70 C20 239	EARTH LEAKAGE BREAKER					1	1	1	1	1	1	1	1	1		1	1		1	1		1 φ 20 A	
6	—	CONTROL BOX	1	1	1	1	1	1	1	1	1	1	1	1	1	1	1	1	1	1	1	1	[RK00A887G01]	

1. The part quantity below indicates the required number of pieces per unit.
2. The circled No. indicates that the part is not shown in the figure.

No.	Parts No.	Parts name								Remarks [Drawing No.]
			EHST20C-VM6D.UK	EHST20D-VM6D.UK	EHST30C-VM6ED.UK	EHST30D-VM6ED.UK	EHPT17X-VM6D.UK	EHPT20X-VM6D.UK	ERPT20X-VM6D.UK	
1	S70 C85 315	ATW CONTROLLER	1	1	1	1	1	1	1	
2	S70 C20 515	TERMINAL BED	1	1	1	1	1	1	1	6P (#250LNE+S123)
3	S70 C39 708	CONTACTOR	2	2	2	2	2	2	2	30 A
4	S70 C49 708	CONTACTOR	1	1	1	1	1	1	1	45 A
5	S70 C60 239	EARTH LEAKAGE BREAKER	1	1	1	1	1	1	1	1 φ 40 A
6	—	CONTROL BOX	1	1	1	1	1	1	1	[RK00A887G01]

YM9D



1. The part quantity below indicates the required number of pieces per unit.
2. The circled No. indicates that the part is not shown in the figure.

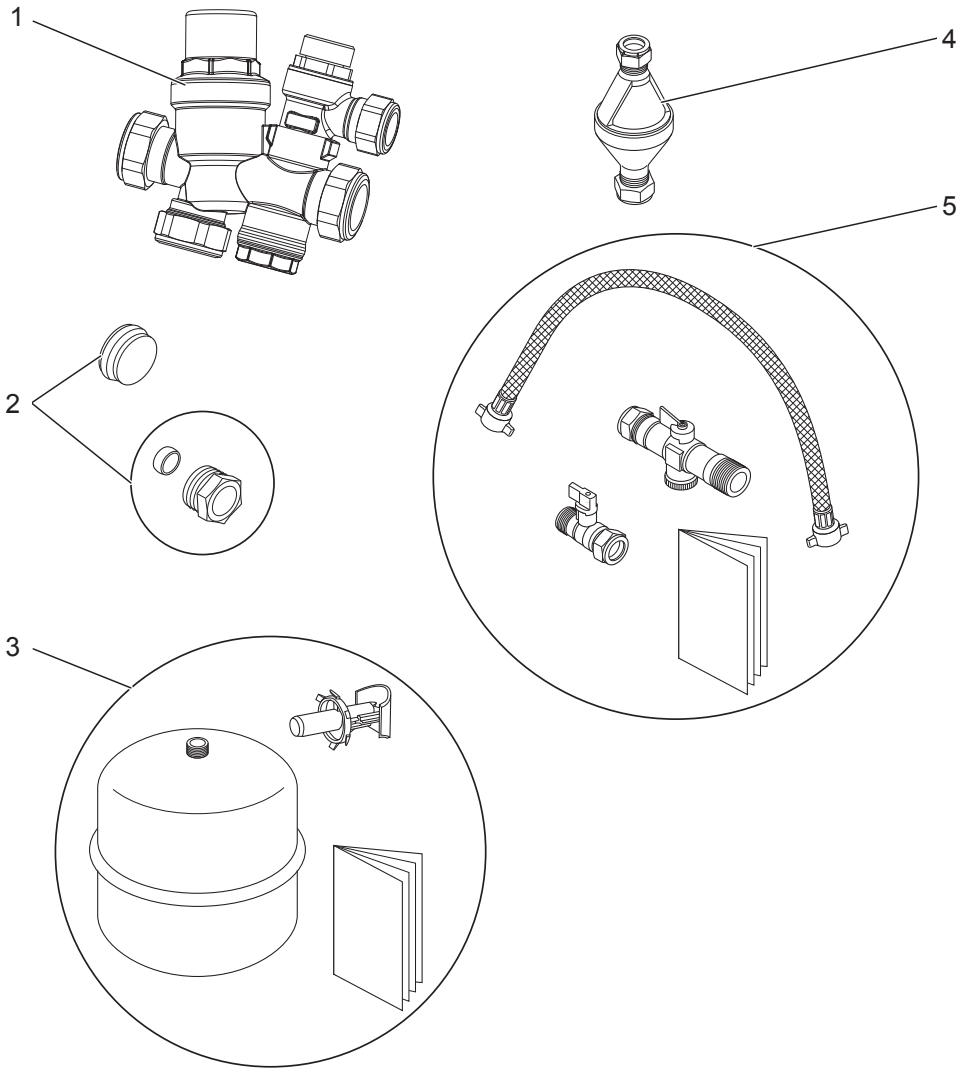
No.	Parts No.	Parts name															Remarks [Drawing No.]	
			EHST20C-YM9D.UK	EHST20C-YM9ED.UK	EHST20C-TM9D.UK	EHST20D-YM9D.UK	EHST20D-YM9ED.UK	EHST20D-TM9D.UK	EHST30C-YM9ED.UK	EHST30C-TM9ED.UK	EHST30D-YM9ED.UK	EHST30D-TM9ED.UK	EHPT17X-YM9D.UK	EHPT20X-YM9D.UK	EHPT20X-YM9ED.UK	EHPT20X-TM9D.UK		EHPT30X-YM9ED.UK
1	S70 C85 315	ATW CONTROLLER	1	1	1	1	1	1	1	1	1	1	1	1	1	1	1	
2	S70 C20 515	TERMINAL BED	1	1	1	1	1	1	1	1	1	1	1	1	1	1	1	6P (#250LNE+S123)
3	S70 C39 708	CONTACTOR	2	2	2	2	2	2	2	2	2	2	2	2	2	2	2	30 A
4	S70 C49 708	CONTACTOR	1	1	1	1	1	1	1	1	1	1	1	1	1	1	1	45 A
5	S70 C70 239	EARTH LEAKAGE BREAKER	1	1	1	1	1	1	1	1	1	1	1	1	1	1	1	3 φ 30 A
6	—	CONTROL BOX	1	1	1	1	1	1	1	1	1	1	1	1	1	1	1	[RK00A887G01]

2

OPTIONAL PARTS

2-1. EHPT ACCESSORIES for UK * Optional parts for EHPT20X-MHEDW

Part No.	PAC-WK02UK-E
----------	--------------



- 1. The part quantity below indicates the required number of pieces per unit.
- 2. The circled No. indicates that the part is not shown in the figure.

No.	Parts No.	Parts name	EHPT20X-MHEDW.UK	Wiring Diagram Symbol	Remarks
1	S70 C20 359	Unvented inlet control group (Pressurereducing valve/Strainer/ Check valves/Expansion relief valve)	1		Pressure reducing valve:3.5 bar Expansion relief vaive:6.0 bar
2	S70 C01 460	Accessory pack :Blanking cap, Olive & compression nut	1		22mm, 15mm
3	S70 C20 402	Expansion vessel 18L	1		R3/4"
4	S70 C02 460	Tundish	2		15 mm, 22 mm
5	S70 C03 460	Filling loop	1		15 mm



2-2. IMMERSION HEATER (1Ph 1kW)

Part No.	PAC-IH01V2-E
----------	--------------

2-3. IMMERSION HEATER (1Ph 3kW)

Part No.	PAC-IH03V2-E
----------	--------------

2-4. WIRELESS REMOTE CONTROLLER

Part No.	PAR-WT50R-E
----------	-------------

2-5. WIRELESS RECEIVER

Part No.	PAR-WR51R-E
----------	-------------

2-6. REMOTE SENSOR

Part No.	PAC-SE41TS-E
----------	--------------

2-7. THERMISTOR

Part No.	PAC-TH011-E
----------	-------------

2-8. HIGH TEMPERATURE THERMISTOR (5m)

Part No.	PAC-TH012HT-E
----------	---------------

2-9. HIGH TEMPERATURE THERMISTOR (30m)

Part No.	PAC-TH012HTL-E
----------	----------------

2-10. ecodan Wi-Fi INTERFACE

Part No.	MAC-567IF-E1
----------	--------------

2-11. EXPANSION VESSEL

Part No.	PAC-EVP12-E
----------	-------------

* Optional part for E***T***-M*ED* series.

2-12. 2-ZONE KIT

Part No.	PAC-TZ02-E
----------	------------

mitsubishi electric corporation

HEAD OFFICE: TOKYO BUILDING, 2-7-3, MARUNOUCHI, CHIYODA-KU, TOKYO 100-8310, JAPAN
