

# GUG-SL-E

## Lossnay Air Processing DX Unit

Return Air Temperature Control (14.1 to 22.3kW)



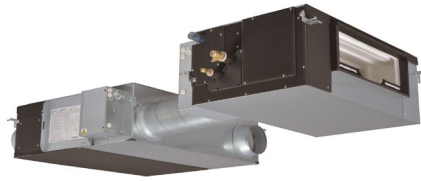
The **GUG-SL-E** combines a Lossnay Mechanical Ventilation with Heat Recovery (MVHR) unit with a Mr Slim Power Inverter outdoor heat pump to heat and cool the supply air delivery to the space.

In return-temperature control mode, the combination of these technologies provides both the fresh air and temperature control to a space from a single system, offering an ideal solution for offices, schools & retail.

### Key Features & Benefits:

- Effective fresh air ventilation for improved air quality
- Provides heat recovery ventilation and air conditioning from the same system
- Single system reduces installation time, cost and space
- Heating / cooling with no recirculation of extracted air in the space

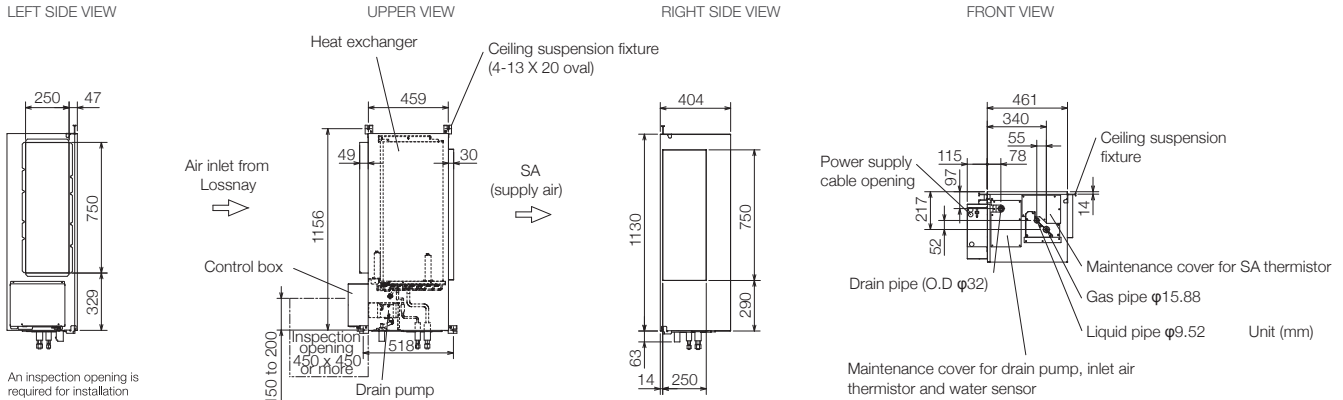




| MODEL   |                                | GUG160-141RAY3    | GUG200-168RAY3   | GUG200-168RAY3   | GUG200-184RAYT   | GUG200-184RAYT   | GUG250-223RAYT   | GUG250-223RAYT   |
|---|--------------------------------|-------------------|------------------|------------------|------------------|------------------|------------------|------------------|
| FAN SPEED 3 (75%)   | Air Volume (l/s)               | 313               | 417              | 417              | 417              | 417              | 521              | 521              |
|   | External Static Pressure (Pa)  | 95                | 71               | 71               | 82               | 82               | 79               | 79               |
| FAN SPEED 4 (100%)  | Air Volume (l/s)               | 417               | 556              | 556              | 556              | 556              | 694              | 694              |
|   | External Static Pressure (Pa)  | 169               | 125              | 125              | 145              | 145              | 140              | 140              |
| HEATING CAPACITY <sup>1</sup> (kW)                              | DX Coil Capacity               | 13                | 13.5             | 13.5             | 13.5             | 13.5             | 14               | 14               |
|   | Heat Recovery Capacity         | 6.6               | 8.6              | 8.6              | 10.3             | 10.3             | 12.1             | 12.1             |
|   | Total Capacity                 | 19.6              | 22.1             | 22.1             | 23.8             | 23.8             | 26.1             | 26.1             |
| COOLING CAPACITY <sup>1</sup> (kW)                              | DX Coil Capacity               | 9.5               | 10.0             | 10.0             | 10.0             | 10.0             | 12.5             | 12.5             |
|   | Heat Recovery Capacity         | 4.6               | 6.8              | 6.8              | 8.4              | 8.4              | 9.8              | 9.8              |
|   | Total Capacity                 | 14.1              | 16.8             | 16.8             | 18.4             | 18.4             | 22.3             | 22.3             |
| SHF   | Nominal                        | 0.65              | 0.74             | 0.74             | 0.76             | 0.76             | 0.87             | 0.87             |
|   | SYSTEM POWER INPUT (kW)        | Heating (nominal) | 4.90             | 4.75             | 4.75             | 4.89             | 4.89             | 5.49             |
|   | Cooling (nominal)              | 3.02              | 3.14             | 3.14             | 3.29             | 3.29             | 4.86             | 4.86             |
|   | PERFORMANCE INDEX <sup>2</sup> | Heating (nominal) | 4.00             | 4.66             | 4.66             | 4.86             | 4.86             | 4.75             |
| Cooling (nominal)   |                                | 4.68              | 5.34             | 5.34             | 5.59             | 5.59             | 4.59             | 4.59             |
| MAX PIPE LENGTH (m)   |                                | 75                | 75               | 75               | 75               | 75               | 75               | 75               |
| MAX HEIGHT DIFFERENCE (m)                                       |                                | 30                | 30               | 30               | 30               | 30               | 30               | 30               |
| PIPE SIZE mm(in)  | Gas                            | 15.88 (5/8")      | 15.88 (5/8")     | 15.88 (5/8")     | 15.88 (5/8")     | 15.88 (5/8")     | 15.88 (5/8")     | 15.88 (5/8")     |
|   | Liquid                         | 9.52 (3/8")       | 9.52 (3/8")      | 9.52 (3/8")      | 9.52 (3/8")      | 9.52 (3/8")      | 9.52 (3/8")      | 9.52 (3/8")      |
| GUG DIMENSIONS (mm)   | Width x Depth x Height         | 1130 x 576 x 404  | 1130 x 576 x 404 | 1130 x 576 x 404 | 1130 x 576 x 404 | 1130 x 576 x 404 | 1130 x 576 x 404 | 1130 x 576 x 404 |
| GUG WEIGHT (kg)   |                                | 28                | 28               | 28               | 28               | 28               | 28               | 28               |
| GUG ELECTRICAL SUPPLY (supplied from outdoor unit) <sup>3</sup> |                                | 220-240V / 50Hz   | 220-240V / 50Hz  | 220-240V / 50Hz  | 220-240V / 50Hz  | 220-240V / 50Hz  | 220-240V / 50Hz  | 220-240V / 50Hz  |
| GUG UNIT <sup>4</sup>   |                                | GUG-03SL-E        | GUG-03SL-E       | GUG-03SL-E       | GUG-03SL-E       | GUG-03SL-E       | GUG-03SL-E       | GUG-03SL-E       |
| MR SLIM OUTDOOR UNIT  |                                | PUHZ-ZRP100YKA3   | PUHZ-ZRP100VKA3  | PUHZ-ZRP100YKA3  | PUHZ-ZRP100VKA3  | PUHZ-ZRP100YKA3  | PUHZ-ZRP125VKA3  | PUHZ-ZRP125YKA3  |
| LOSSNAY UNIT  |                                | LGH-160RVX3-E     | LGH-200RVX3-E    | LGH-200RVX3-E    | LGH-200RVXT-E    | LGH-200RVXT-E    | LGH-250RVXT-E    | LGH-250RVXT-E    |
| LOSSNAY CONTROLLER  |                                | PZ-62DR-EB        | PZ-62DR-EB       | PZ-62DR-EB       | PZ-62DR-EB       | PZ-62DR-EB       | PZ-62DR-EB       | PZ-62DR-EB       |

Notes: <sup>1</sup> The cooling and heating capacities are based on the rated airflow of fan speed 4 and the following air conditions: Cooling Indoor: 27°CDB/19°CWB Outdoor: 35°CDB/24°CWB. Heating Indoor: 20°CDB/15°CWB Outdoor: 7°CDB/6°CWB. <sup>2</sup> Performance index is the total capacity divided by the total power consumption of the outdoor unit and Lossnay at the conditions above. <sup>3</sup> For electrical power requirements for Lossnay and Mr Slim outdoor unit, please refer to their respective sections. <sup>4</sup> GUG unit includes a dedicated controller.

GUG-03SL-E DIMENSIONS



Telephone: 01707 282880  
email: [air.conditioning@meuk.mee.com](mailto:air.conditioning@meuk.mee.com)  
[les.mitsubishielectric.co.uk](http://les.mitsubishielectric.co.uk)



Mitsubishi Electric Living  
Environmental Systems UK



Mitsubishi Electric  
Cooling and Heating UK



[mitsubishielectricuk\\_les](https://www.instagram.com/mitsubishielectricuk_les)



Mitsubishi Electric Living  
Environmental Systems UK



[thehub.mitsubishielectric.co.uk](http://thehub.mitsubishielectric.co.uk)

UNITED KINGDOM Mitsubishi Electric Europe Living Environment Systems Division, Travellers Lane, Hatfield, Hertfordshire, AL10 8XB, England. Telephone: 01707 282880 Fax: 01707 278881  
IRELAND Mitsubishi Electric Europe, Westgate Business Park, Ballymount, Dublin 24, Ireland. Telephone: (01) 419 8800 Fax: (01) 419 8890 International code: (003531)

Country of origin: United Kingdom - Italy - Turkey - Japan - Thailand - Malaysia. ©Mitsubishi Electric Europe 2023. Mitsubishi and Mitsubishi Electric are trademarks of Mitsubishi Electric Europe B.V. The company reserves the right to make any variation in technical specification to the equipment described, or to withdraw or replace products without prior notification or public announcement. Mitsubishi Electric is constantly developing and improving its products. All descriptions, illustrations, drawings and specifications in this publication present only general particulars and shall not form part of any contract. All goods are supplied subject to the Company's General Conditions of Sale, a copy of which is available on request. Third-party product and brand names may be trademarks or registered trademarks of their respective owners.

Note: Refer to 'Installation Manual' and 'Instruction Book' for further 'Technical Information'. The fuse rating is for guidance only and please refer to the relevant databook for detailed specification. It is the responsibility of a qualified electrician/electrical engineer to select the correct cable size and fuse rating based on current regulation and site specific conditions. Mitsubishi Electric's air conditioning equipment and heat pump systems contain a fluorinated greenhouse gas, R410A (GWP:2088), R32 (GWP:675), R407C (GWP:1774), R134a (GWP:1430), R513A (GWP:631), R454B (GWP:466), R1234ze (GWP:7) or R1234yf (GWP:4). \*These GWP values are based on Regulation (EU) No 517/2014 from IPCC 4th edition. In case of Regulation (EU) No.526/2011 from IPCC 3rd edition, these are as follows: R410A (GWP:1975), R32 (GWP:550), R407C (GWP:1650) or R134a (GWP:1300).

Effective as of March 2023

