

PLA-SM R32

4-Way Blow Ceiling Cassette System

Inverter Heat Pump

Mr. SLIM™

The **PLA-SM Inverter** cassette range offers customers all the features and benefits of inverter technology, whilst being very cost effective. Available as a single combination only, this range offers advanced control options, extremely flexible installation and a sophisticated, streamlined design.

R32

Key Features & Benefits:

- Increased comfort levels through advanced airflow
- Energy usage display available as standard with the PAR-41MAA controller
- **Optional filter lowering operation** down to 4m (PLP-6EAJ), allowing for easier maintenance
- **Optional black satin grille** (PLP-6EA-B), ideal for applications with exposed ceilings or stylish aesthetics
- **Small footprint, single fan chassis across entire outdoor unit range**
- **Optional V Blocking filter** (PAC-SK53KF-E) provides in-room air purification, neutralises viruses, bacteria, allergens, dust and mould
- **Compatible with Plasma Quad Connect** - an innovative, bolt-on air purifying device which neutralises viruses, bacteria, allergens, PM2.5, mould and dust (PAC-SK51FT-E)



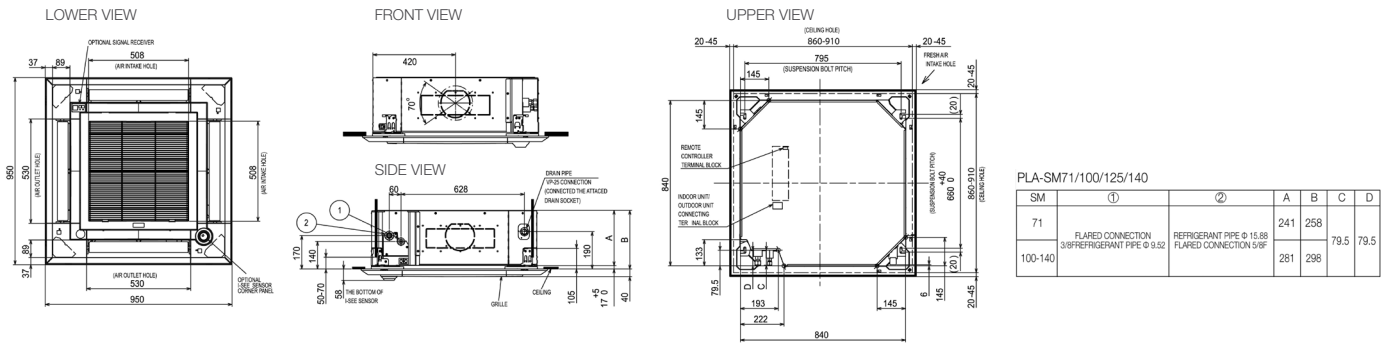


PLA-SM INDOOR UNITS		PLA-SM71EA	PLA-SM100EA	PLA-SM100EA	PLA-SM125EA	PLA-SM125EA	PLA-SM140EA	PLA-SM140EA
CAPACITY (kW)	Heating (nominal)	8.0 (2.2-8.1)	11.2 (2.8-12.5)	11.2 (2.8-12.5)	13.5 (4.1-15.0)	13.5 (4.1-15.0)	15.0 (4.2-15.8)	15.0 (4.2-15.8)
	Cooling (nominal)	7.1 (2.2-8.1)	9.5 (4.0-10.6)	9.5 (4.0-10.6)	12.1 (5.8-13.0)	12.1 (5.8-13.0)	13.4 (5.8-14.1)	13.4 (5.8-14.1)
	Heating (UK)	6.80 (1.87-6.89)	9.63 (2.41-10.75)	9.63 (2.41-10.75)	11.61 (3.53-12.90)	11.61 (3.53-12.90)	12.90 (3.61-13.59)	12.90 (3.61-13.59)
	Cooling (UK)	6.53 (2.03-7.45)	8.55 (3.60-11.25)	8.55 (3.60-11.25)	10.89 (5.22-11.70)	10.89 (5.22-11.70)	11.61 (5.22-12.69)	11.61 (5.22-12.69)
SHF (nominal)		0.75	0.77	0.77	0.73	0.73	0.70	0.70
COP / EER (nominal)		3.50 / 3.60	3.61 / 3.40	3.61 / 3.40	3.61 / 2.90	3.61 / 2.90	3.30 / 2.61	3.30 / 2.61
SCOP (ηsh) / SEER (ηsc) (BS EN14825)		3.90 / 6.00	4.50 / 6.00	4.50 / 6.00	3.9 (154.1%) / 5.5 (225.2%)	3.9 (154.1%) / 5.5 (225.2%)	3.9 (153.3%) / 5.5 (224.9%)	3.9 (153.3%) / 5.5 (224.9%)
ErP ENERGY EFFICIENCY CLASS	Heating/Cooling	A / A+	A+ / A+	A+ / A+	A / A	A / A	A / A	A / A
AIRFLOW (l/s)	Lo-M1-M12-Hi	233-283-317-350	317-383-433-483	317-383-433-483	350-417-467-517	350-417-467-517	400-433-483-533	400-433-483-533
PIPE SIZE mm (in)	Gas/ Liquid	15.88 (5/8") / 9.52 (3/8")	15.88 (5/8") / 9.52 (3/8")	15.88 (5/8") / 9.52 (3/8")	15.88 (5/8") / 9.52 (3/8")	15.88 (5/8") / 9.52 (3/8")	15.88 (5/8") / 9.52 (3/8")	15.88 (5/8") / 9.52 (3/8")
SOUND PRESSURE LEVEL (dBA)	Lo-M1-M12-Hi	28-30-32-34	31-34-37-40	31-34-37-40	33-37-41-44	33-37-41-44	36-39-42-44	36-39-42-44
SOUND POWER LEVEL (dBA)		56	61	61	65	65	65	65
DIMENSIONS (mm)	Width x Depth x Height (Grille)	840 (950) x 840 (950) x 258 (40)	840 (950) x 840 (950) x 298 (40)	840 (950) x 840 (950) x 298 (40)	840 (950) x 840 (950) x 298 (40)	840 (950) x 840 (950) x 298 (40)	840 (950) x 840 (950) x 298 (40)	840 (950) x 840 (950) x 298 (40)
WEIGHT (kg)	Unit / Grille	21 (5)	24 (5)	24 (5)	26 (5)	26 (5)	26 (5)	26 (5)
ELECTRICAL SUPPLY		Fed by Outdoor Unit	Fed by Outdoor Unit	Fed by Outdoor Unit	Fed by Outdoor Unit	Fed by Outdoor Unit	Fed by Outdoor Unit	Fed by Outdoor Unit
FUSE RATING (BS88) - HRC (A)		6	6	6	6	6	6	6
INTERCONNECTING CABLE No. CORES		4	4	4	4	4	4	4
SELF-ELEVATING GRILLE		PLP-6EAJ	PLP-6EAJ	PLP-6EAJ	PLP-6EAJ	PLP-6EAJ	PLP-6EAJ	PLP-6EAJ
GRILLE REFERENCE	White	PLP-6EA	PLP-6EA	PLP-6EA	PLP-6EA	PLP-6EA	PLP-6EA	PLP-6EA
	Black Satin	PLP-6EA-B	PLP-6EA-B	PLP-6EA-B	PLP-6EA-B	PLP-6EA-B	PLP-6EA-B	PLP-6EA-B
V BLOCKING FILTER		PAC-SK53KF-E	PAC-SK53KF-E	PAC-SK53KF-E	PAC-SK53KF-E	PAC-SK53KF-E	PAC-SK53KF-E	PAC-SK53KF-E
WIRED REMOTE CONTROLLER REFERENCE		PAR-41MAA	PAR-41MAA	PAR-41MAA	PAR-41MAA	PAR-41MAA	PAR-41MAA	PAR-41MAA
WIRELESS REMOTE CONTROLLER REFERENCE		PAR-SL101A-E	PAR-SL101A-E	PAR-SL101A-E	PAR-SL101A-E	PAR-SL101A-E	PAR-SL101A-E	PAR-SL101A-E

SUZ-SM / PUZ-SM OUTDOOR UNITS		SUZ-SM71VA	PUZ-SM100VKA2	PUZ-SM100YKA2	PUZ-SM125VKA2	PUZ-SM125YKA2	PUZ-SM140VKA2	PUZ-SM140YKA2
SOUND PRESSURE LEVEL (dBA)	Heating/Cooling	51 / 49	54 / 51	54 / 51	56 / 54	56 / 54	57 / 55	57 / 55
	Cooling	66	70	70	72	72	73	73
SOUND POWER LEVEL (dBA)		55	76	78	84	85	84	85
WEIGHT (kg)		55	76	78	84	85	84	85
DIMENSIONS (mm)	Width x Depth x Height	840 x 330 x 880	1050 x 330 x 981	1050 x 330 x 981	1050 x 330 x 981	1050 x 330 x 981	1050 x 330 x 981	1050 x 330 x 981
ELECTRICAL SUPPLY		220-240v, 50Hz	220-240v, 50Hz	380-415v, 50Hz	220-240v, 50Hz	380-415v, 50Hz	220-240v, 50Hz	380-415v, 50Hz
PHASE		Single	Single	Three	Single	Three	Single	Three
SYSTEM POWER INPUT (kW)	Heating/Cooling (nominal)	2.28 / 1.97	3.10 / 2.79	3.10 / 2.79	3.73 / 4.17	3.73 / 4.17	4.54 / 5.13	4.54 / 5.13
	Heating/Cooling (UK)	1.94 / 1.70	2.64 / 2.40	2.64 / 2.40	3.17 / 3.59	3.17 / 3.59	3.87 / 4.14	3.87 / 4.14
STARTING CURRENT (A)		10.0	13.4	4.8	17.4	6.3	22.3	8.1
SYSTEM RUNNING CURRENT (A)	Heating/Cooling [MAX]	9.7 / 8.3 [14.8]	13.4 / 12.1 [20.0]	4.8 / 4.3 [11.5]	15.6 / 17.4 [26.5]	5.6 / 6.3 [11.5]	19.0 / 22.3 [30.0]	6.9 / 8.1 [11.5]
FUSE RATING (BS88) - HRC (A)		20	32	16	32	16	40	16
MAINS CABLE No. CORES		3	3	5	3	5	3	5
MAX PIPE LENGTH (m)		30	30	30	40	40	40	40
MAX HEIGHT DIFFERENCE (m)		30	30	30	30	30	30	30
CHARGE REFRIGERANT (kg) / CO ₂ EQUIVALENT (t) - R32 (GWP 675)		1.45 / 0.98 (7m)	3.10 / 2.09 (30m)	3.10 / 2.09 (30m)	3.60 / 2.43 (30m)	3.60 / 2.43 (30m)	3.60 / 2.43 (30m)	3.60 / 2.43 (30m)
MAX ADDITIONAL REFRIGERANT (kg) / CO ₂ EQUIVALENT (t) - R32 (GWP 675)		2.37 / 1.80	N/A	3.50 / 2.36	4.00 / 2.70	4.00 / 2.70	4.00 / 2.70	4.00 / 2.70

Note: The PLP-6EAE 3D i-See sensor grille or PAC-SE1ME-E corner panel will NOT operate with this model.

PLA-SM71/100/125/140EA DIMENSIONS



Telephone: 01707 282880
email: air.conditioning@meuk.mee.com
les.mitsubishielectric.co.uk



UNITED KINGDOM Mitsubishi Electric Europe Living Environment Systems Division, Travellers Lane, Hatfield, Hertfordshire, AL10 8XB, England. Telephone: 01707 282880 Fax: 01707 278881
IRELAND Mitsubishi Electric Europe, Westgate Business Park, Ballymount, Dublin 24, Ireland. Telephone: (01) 419 8800 Fax: (01) 419 8890 International code: (003531)

Country of origin: United Kingdom - Italy - Turkey - Japan - Thailand - Malaysia. ©Mitsubishi Electric Europe 2023. Mitsubishi and Mitsubishi Electric are trademarks of Mitsubishi Electric Europe B.V. The company reserves the right to make any variation in technical specification to the equipment described, or to withdraw or replace products without prior notification or public announcement. Mitsubishi Electric is constantly developing and improving its products. All descriptions, illustrations, drawings and specifications in this publication present only general particulars and shall not form part of any contract. All goods are supplied subject to the Company's General Conditions of Sale, a copy of which is available on request. Third-party product and brand names may be trademarks or registered trademarks of their respective owners.

Note: Refer to 'Installation Manual' and 'Instruction Book' for further 'Technical Information'. The fuse rating is for guidance only and please refer to the relevant databook for detailed specification. It is the responsibility of a qualified electrician/electrical engineer to select the correct cable size and fuse rating based on current regulation and site specific conditions. Mitsubishi Electric's air conditioning equipment and heat pump systems contain a fluorinated greenhouse gas, R410A (GWP:2088), R32 (GWP:675), R407C (GWP:1774), R134a (GWP:1430), R513A (GWP:631), R454B (GWP:466), R1234ze (GWP:7) or R1234yf (GWP:4). *These GWP values are based on Regulation (EU) No 517/2014 from IPCC 4th edition. In case of Regulation (EU) No.626/2011 from IPCC 3rd edition, these are as follows. R410A (GWP:1975), R32 (GWP:550), R407C (GWP:1650) or R134a (GWP:1300).

Effective as of April 2023

