

# SLZ-M R32

## 600x600 4-Way Blow Ceiling Cassette System

Standard Inverter Heat Pump (Single Phase)

Mr. SLIM™

The **SLZ-M** Standard Inverter ceiling cassette unit provides a smart air conditioning solution for tight ceiling spaces. Combining a stylish square design with energy-saving technologies, it is designed to fit snugly into ceilings, making the unit ideal in both small commercial spaces, offices and retail applications.

**R32**

### Key Features & Benefits:

- Height of only 245mm to allow installation in narrow ceiling spaces
- Increased comfort levels through advanced airflow
- Energy usage display available as standard with the PAR-41MAA controller
- Small footprint, single fan chassis across entire outdoor unit range
- Optional 3D i-see sensor grille provides energy efficient, customised comfort by automatically monitoring room occupancy, position and body temperatures (SLP-2FAE)
- Optional V Blocking filter provides in-room air purification, neutralising viruses, allergens, dust and mould





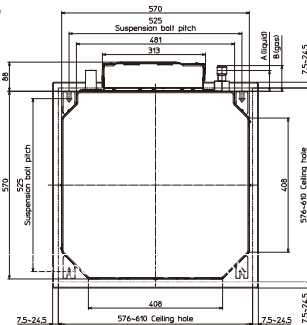
| SLZ-M INDOOR UNITS                   |                        | SLZ-M15FA                        | SLZ-M25FA                        | SLZ-M35FA                        | SLZ-M50FA                        | SLZ-M60FA                        |
|--------------------------------------|------------------------|----------------------------------|----------------------------------|----------------------------------|----------------------------------|----------------------------------|
| CAPACITY (kW)                        | Heating (nominal)      | 1.7 (0.9-3.1)                    | 3.2 (1.3-4.2)                    | 4.0 (1.0-5.0)                    | 5.0 (1.3-5.5)                    | 6.4 (1.6-7.3)                    |
|                                      | Cooling (nominal)      | 1.5 (0.9-2.4)                    | 2.5 (1.4-3.2)                    | 3.5 (0.7-3.9)                    | 4.6 (1.0-5.2)                    | 5.7 (1.5-6.3)                    |
|                                      | Heating (UK)           | -                                | 2.72 (1.11-3.57)                 | 3.40 (0.85-4.25)                 | 4.25 (1.11-4.68)                 | 5.44 (1.36-6.21)                 |
|                                      | Cooling (UK)           | -                                | 2.30 (1.29-2.94)                 | 3.22 (0.64-3.59)                 | 4.42 (0.92-4.79)                 | 5.25 (1.38-5.80)                 |
| SHF (nominal)                        |                        | -                                | 0.78                             | 0.72                             | 0.68                             | 0.68                             |
| COP / EER (nominal)                  |                        | -                                | 3.61 / 3.80                      | 3.71 / 3.20                      | 3.20 / 3.40                      | 3.00 / 3.40                      |
| SCOP (ηsh) / SEER (ηsc) (BS EN14825) |                        | -                                | 4.30 / 6.30                      | 4.30 / 6.70                      | 4.20 / 6.30                      | 4.10 / 6.20                      |
| ErP ENERGY EFFICIENCY CLASS          | Heating/Cooling        |                                  | A+ / A++                         | A+ / A++                         | A+ / A++                         | A+ / A++                         |
| AIRFLOW (l/s)                        | Lo-Mi-Hi               | 100-108-117                      | 108-125-142                      | 108-133-158                      | 117-150-192                      | 125-192-217                      |
| PIPE SIZE mm (in)                    | Gas                    | 9.52 (3/8")                      | 9.52 (3/8")                      | 9.52 (3/8")                      | 12.7 (1/2")                      | 15.88 (5/8")                     |
|                                      | Liquid                 | 6.35 (1/4")                      | 6.35 (1/4")                      | 6.35 (1/4")                      | 6.35 (1/4")                      | 6.35 (1/4")                      |
| SOUND PRESSURE LEVEL (dBA)           | Lo-Mi-Hi               | 24-26-28                         | 24-26-28                         | 25-30-31                         | 25-30-34                         | 27-34-39                         |
| SOUND POWER LEVEL (dBA)              |                        | 45                               | 45                               | 48                               | 51                               | 56                               |
| DIMENSIONS (mm)                      | Width x Depth x Height | 570 (625) x 570 (625) x 245 (10) | 570 (625) x 570 (625) x 245 (10) | 570 (625) x 570 (625) x 245 (10) | 570 (625) x 570 (625) x 245 (10) | 570 (625) x 570 (625) x 245 (10) |
| WEIGHT (kg)                          | Unit / Grille          | 15 / 3                           | 15 / 3                           | 15 / 3                           | 15 / 3                           | 15 / 3                           |
| ELECTRICAL SUPPLY                    |                        | Fed by Outdoor Unit              | Fed by Outdoor Unit              | Fed by Outdoor Unit              | Fed by Outdoor Unit              | Fed by Outdoor Unit              |
| FUSE RATING (BS88) - HRC (A)         |                        | 6                                | 6                                | 6                                | 6                                | 6                                |
| INTERCONNECTING CABLE No. CORES      |                        | 4                                | 4                                | 4                                | 4                                | 4                                |
| GRILLE REFERENCE                     |                        | SLP-2FA                          | SLP-2FA                          | SLP-2FA                          | SLP-2FA                          | SLP-2FA                          |
| WIRED REMOTE CONTROLLER REFERENCE    |                        | PAR-41MAA                        | PAR-41MAA                        | PAR-41MAA                        | PAR-41MAA                        | PAR-41MAA                        |

Note: SLZ-M15FA only available with R32 MXZ Multi-Split outdoor units.

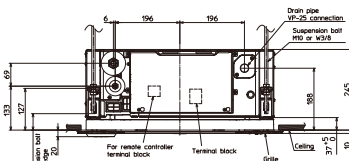
| SUZ-M OUTDOOR UNITS  |                           | N/A Multi-Split only | SUZ-M25VAR2     | SUZ-M35VAR2     | SUZ-M50VAR2      | SUZ-M60VAR2      |
|--|---------------------------|----------------------|-----------------|-----------------|------------------|------------------|
| SOUND PRESSURE LEVEL (dBA)   | Heating/Cooling           | -                    | 45 / 46         | 48 / 48         | 48 / 49          | 49 / 51          |
| SOUND POWER LEVEL (dBA)  | Cooling                   | -                    | 59              | 59              | 64               | 65               |
| WEIGHT (kg)  |                           | -                    | 30              | 35              | 41               | 54               |
| DIMENSIONS (mm)  | Width x Depth x Height    | -                    | 800 x 285 x 550 | 800 x 285 x 550 | 800 x 285 x 714  | 840 x 330 x 880  |
| ELECTRICAL SUPPLY  |                           | -                    | 220-240v, 50Hz  | 220-240v, 50Hz  | 220-240v, 50Hz   | 220-240v, 50Hz   |
| PHASE  |                           | -                    | Single          | Single          | Single           | Single           |
| SYSTEM POWER INPUT (kW)  | Heating/Cooling (nominal) | -                    | 0.88 / 0.65     | 1.07 / 1.09     | 1.56 / 1.35      | 2.13 / 1.67      |
|  | Heating/Cooling (UK)      | -                    | 0.75 / 0.56     | 0.91 / 0.94     | 1.33 / 1.16      | 1.81 / 1.44      |
| STARTING CURRENT (A)   |                           | -                    | 3.7             | 5.0             | 8.0              | 9.3              |
| SYSTEM RUNNING CURRENT (A)   | Heating/Cooling (MAX)     | -                    | 3.7 / 3.0 [6.8] | 5.0 / 4.1 [8.5] | 8.0 / 7.1 [13.5] | 9.3 / 8.4 [14.9] |
| FUSE RATING (BS88) - HRC (A)   |                           | -                    | 10              | 10              | 20               | 20               |
| MAINS CABLE No. CORES  |                           | -                    | 3               | 3               | 3                | 3                |
| MAX PIPE LENGTH (m)  |                           | -                    | 20              | 20              | 30               | 30               |
| MAX HEIGHT DIFFERENCE (m)  |                           | -                    | 12              | 12              | 30               | 30               |
| CHARGE REFRIGERANT (kg) / CO <sub>2</sub> EQUIVALENT (t) - R32 (GWP 675)         |                           | -                    | 0.65 / 0.44     | 0.90 / 0.61     | 1.20 / 0.81      | 1.25 / 0.84      |
| MAX ADDITIONAL REFRIGERANT (kg) / CO <sub>2</sub> EQUIVALENT (t) - R32 (GWP 675) |                           | -                    | 0.91 / 0.61     | 1.16 / 0.78     | 1.66 / 1.12      | 1.71 / 1.15      |

#### SLZ-M15/25/35/50/60FA DIMENSIONS

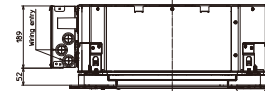
UPPER VIEW



SIDE VIEW



FRONT VIEW



Telephone: 01707 282880  
email: [air.conditioning@meuk.mee.com](mailto:air.conditioning@meuk.mee.com)  
[les.mitsubishielectric.co.uk](http://les.mitsubishielectric.co.uk)



Mitsubishi Electric Living  
Environmental Systems UK



Mitsubishi Electric  
Cooling and Heating UK



[mitsubishielectricuk\\_les](https://www.instagram.com/mitsubishielectricuk_les)



Mitsubishi Electric Living  
Environmental Systems UK



[thehub.mitsubishielectric.co.uk](http://thehub.mitsubishielectric.co.uk)

UNITED KINGDOM Mitsubishi Electric Europe Living Environment Systems Division, Travellers Lane, Hatfield, Hertfordshire, AL10 8XB, England. Telephone: 01707 282880 Fax: 01707 278881  
IRELAND Mitsubishi Electric Europe, Westgate Business Park, Ballymount, Dublin 24, Ireland. Telephone: (01) 419 8800 Fax: (01) 419 8890 International code: (003531)

Country of origin: United Kingdom - Italy - Turkey - Japan - Thailand - Malaysia. ©Mitsubishi Electric Europe 2023. Mitsubishi and Mitsubishi Electric are trademarks of Mitsubishi Electric Europe B.V. The company reserves the right to make any variation in technical specification to the equipment described, or to withdraw or replace products without prior notification or public announcement. Mitsubishi Electric is constantly developing and improving its products. All descriptions, illustrations, drawings and specifications in this publication present only general particulars and shall not form part of any contract. All goods are supplied subject to the Company's General Conditions of Sale, a copy of which is available on request. Third-party product and brand names may be trademarks or registered trademarks of their respective owners.

Note: Refer to 'Installation Manual' and 'Instruction Book' for further 'Technical Information'. The fuse rating is for guidance only and please refer to the relevant databook for detailed specification. It is the responsibility of a qualified electrician/electrical engineer to select the correct cable size and fuse rating based on current regulation and site specific conditions. Mitsubishi Electric's air conditioning equipment and heat pump systems contain a fluorinated greenhouse gas, R410A (GWP:2088), R32 (GWP:675), R407C (GWP:1774), R134a (GWP:1430), R513A (GWP:631), R454B (GWP:466), R1234ze (GWP:7) or R1234yf (GWP:4). \*These GWP values are based on Regulation (EU) No 517/2014 from IPCC 4th edition. In case of Regulation (EU) No.626/2011 from IPCC 3rd edition, these are as follows: R410A (GWP:1975), R32 (GWP:550), R407C (GWP:1650) or R134a (GWP:1300).

Effective as of September 2023



[greengateway.mitsubishielectric.co.uk](http://greengateway.mitsubishielectric.co.uk)