

# PEAD-M R32

Ceiling Concealed Ducted System  
Standard Inverter Heat Pump (Three Phase)

Mr. SLIM™

The cost effective **PEAD-M Standard Inverter** range is a ceiling concealed ducted system that blends a host of outstanding features with an unobtrusive design (only 250mm height) for easy installation and maintenance. Offering advanced control options and extended pipe runs, the units also come with a wide range of external static pressure settings, making this range an extremely flexible solution for applications such as light commercial, schools and warehousing.

**R32**

## Key Features & Benefits:

- Increased comfort levels through advanced airflow and smart defrost features
- Energy usage display available as standard with the PAR-41MAA controller
- Improved efficiency through new fan motor
- Drain pump included as standard
- Compatible with Plasma Quad Connect - an innovative, bolt-on air purifying device which neutralises viruses, bacteria, allergens, PM2.5, mould and dust





PEAD-M INDOOR UNITS		PEAD-M100JA2	PEAD-M125JA2	PEAD-M140JA2
CAPACITY (kW)	Heating (nominal)	11.2 (2.8-12.5)	13.5 (4.1-15.0)	15.0 (4.2-15.8)
	Cooling (nominal)	9.5 (4.0-10.6)	12.1 (6.0-13.0)	13.4 (6.1-14.1)
	Heating (UK)	9.63 (2.41-10.75)	11.61 (3.53-12.90)	12.90 (3.61-13.59)
	Cooling (UK)	8.65 (3.64-9.65)	11.01 (5.46-11.83)	12.19 (5.55-12.83)
SHF (nominal)		0.82	0.78	0.77
COP / EER (nominal)		3.80 / 3.30	3.61 / 3.01	3.61 / 2.81
SCOP (ηsh) / SEER (ηsc) (BS EN14825)		4.10 (161.4%) / 6.10 (257.3%)	3.80 (152.1%) / 5.30 (218.5%)	3.80 (151.9%) / 5.20 (213.3%)
ErP ENERGY EFFICIENCY CLASS	Heating/Cooling	A+ / A++	A / A	A / A
AIRFLOW (l/s)	Lo-Mi-Hi	383-467-533	467-567-617	492-592-667
PIPE SIZE mm (in)	Gas	15.88 (5/8")	15.88 (5/8")	15.88 (5/8")
	Liquid	9.52 (3/8")	9.52 (3/8")	9.52 (3/8")
EXTERNAL STATIC PRESSURE (Pa)		35-50-70-100-150	35-50-70-100-150	35-50-70-100-150
SOUND PRESSURE LEVEL (dBA)	Lo-Mi-Hi	31-36-39	35-39-41	34-38-41
SOUND POWER LEVEL (dBA)		62	66	66
DIMENSIONS (mm)	Width x Depth x Height	1400 x 732 x 250	1400 x 732 x 250	1600 x 732 x 250
WEIGHT (kg)		37	38	42
ELECTRICAL SUPPLY		Fed by Outdoor Unit	Fed by Outdoor Unit	Fed by Outdoor Unit
FUSE RATING (BS88) - HRC (A)		6	6	6
INTERCONNECTING CABLE No. CORES		4	4	4
WIRED REMOTE CONTROLLER REFERENCE		PAR-41MAA	PAR-41MAA	PAR-41MAA

PUZ-M OUTDOOR UNITS		PUZ-M100YKA2	PUZ-M125YKA2	PUZ-M140YKA2
SOUND PRESSURE LEVEL (dBA)	Heating/Cooling	51 / 54	54 / 56	55 / 57
SOUND POWER LEVEL (dBA)	Cooling	70	72	73
WEIGHT (kg)		78	85	85
DIMENSIONS (mm)	Width x Depth x Height	1050 x 330 x 981	1050 x 330 x 981	1050 x 330 x 981
ELECTRICAL SUPPLY		380-415v, 50Hz	380-415v, 50Hz	380-415v, 50Hz
PHASE		Three	Three	Three
SYSTEM POWER INPUT (kW)	Heating/Cooling (nominal)	2.947 / 2.878	3.739 / 4.019	4.155 / 4.768
	Heating/Cooling (UK)	2.35 / 2.47	3.32 / 3.41	3.69 / 4.05
STARTING CURRENT (A)		3.5	4.9	4.9
SYSTEM RUNNING CURRENT (A)	Heating/Cooling [MAX]	5.88 / 6.18 [13.8]	8.30 / 8.52 [12.8]	9.23 / 10.13 [12.9]
FUSE RATING (BS88) - HRC (A)		16	16	16
MAINS CABLE No. CORES		5	5	5
MAX PIPE LENGTH (m)		55	65	65
MAX HEIGHT DIFFERENCE (m)		30	30	30
CHARGE REFRIGERANT (kg) / CO <sub>2</sub> EQUIVALENT (t) - R32 (GWP 675)		3.10 / 2.09	3.60 / 2.43	3.60 / 2.43
MAX ADDITIONAL REFRIGERANT (kg) / CO <sub>2</sub> EQUIVALENT (t) - R32 (GWP 675)		4.10 / 2.77	5.00 / 3.38	5.00 / 3.38

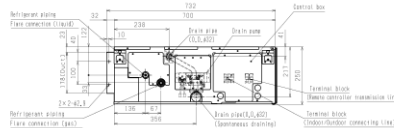
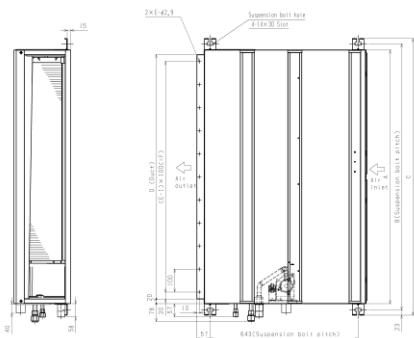
③ Three Phase

### PEAD-M100/125/140JA2 DIMENSIONS

FRONT VIEW

UPPER VIEW

SIDE VIEW



Model	A	B	C	D	E	F
PEAD-M100,125JA	1400	1454	1500	1360	14	1300
PEAD-M140JA	1600	1654	1700	1560	16	1500



Telephone: 01707 282880  
email: [air.conditioning@meuk.mee.com](mailto:air.conditioning@meuk.mee.com)  
[les.mitsubishielectric.co.uk](http://les.mitsubishielectric.co.uk)



Mitsubishi Electric Living  
Environmental Systems UK



Mitsubishi Electric  
Cooling and Heating UK



[mitsubishielectricuk\\_les](https://www.instagram.com/mitsubishielectricuk_les)



Mitsubishi Electric Living  
Environmental Systems UK



[thehub.mitsubishielectric.co.uk](http://thehub.mitsubishielectric.co.uk)

UNITED KINGDOM Mitsubishi Electric Europe Living Environment Systems Division, Travellers Lane, Hatfield, Hertfordshire, AL10 8XB, England. Telephone: 01707 282880 Fax: 01707 278881  
IRELAND Mitsubishi Electric Europe, Westgate Business Park, Ballymount, Dublin 24, Ireland. Telephone: (01) 419 8800 Fax: (01) 419 8890 International code: (003531)

Country of origin: United Kingdom - Italy - Turkey - Japan - Thailand - Malaysia. ©Mitsubishi Electric Europe 2023. Mitsubishi and Mitsubishi Electric are trademarks of Mitsubishi Electric Europe B.V. The company reserves the right to make any variation in technical specification to the equipment described, or to withdraw or replace products without prior notification or public announcement. Mitsubishi Electric is constantly developing and improving its products. All descriptions, illustrations, drawings and specifications in this publication present only general particulars and shall not form part of any contract. All goods are supplied subject to the Company's General Conditions of Sale, a copy of which is available on request. Third-party product and brand names may be trademarks or registered trademarks of their respective owners.

Note: Refer to 'Installation Manual' and 'Instruction Book' for further 'Technical Information'. The fuse rating is for guidance only and please refer to the relevant databook for detailed specification. It is the responsibility of a qualified electrician/electrical engineer to select the correct cable size and fuse rating based on current regulation and site specific conditions. Mitsubishi Electric's air conditioning equipment and heat pump systems contain a fluorinated greenhouse gas, R410A (GWP:2088), R32 (GWP:675), R407C (GWP:1774), R134a (GWP:1430), R513A (GWP:631), R454B (GWP:466), R1234ze (GWP:7) or R1234yf (GWP:4). \*These GWP values are based on Regulation (EU) No 517/2014 from IPCC 4th edition. In case of Regulation (EU) No.526/2011 from IPCC 3rd edition, these are as follows. R410A (GWP:1975), R32 (GWP:550), R407C (GWP:1650) or R134a (GWP:1300).

Effective as of September 2023



[greengateway.mitsubishielectric.co.uk](http://greengateway.mitsubishielectric.co.uk)