

GUG-SL-E

Lossnay Air Processing DX Unit

Return Air Temperature Control (7.5-17.6kW)



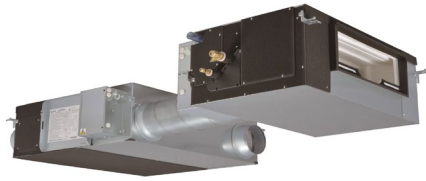
The **GUG-SL-E** combines a Lossnay Mechanical Ventilation with Heat Recovery (MVHR) unit with a Mr Slim Power Inverter outdoor heat pump, to heat and cool the supply air delivered to the space.

In supply air temperature control mode, the combination of both technologies provides effective tempering of fresh air entering a space, taking the load off other cooling/heating services, whilst eliminating any chance of draughts.

Key Features & Benefits:

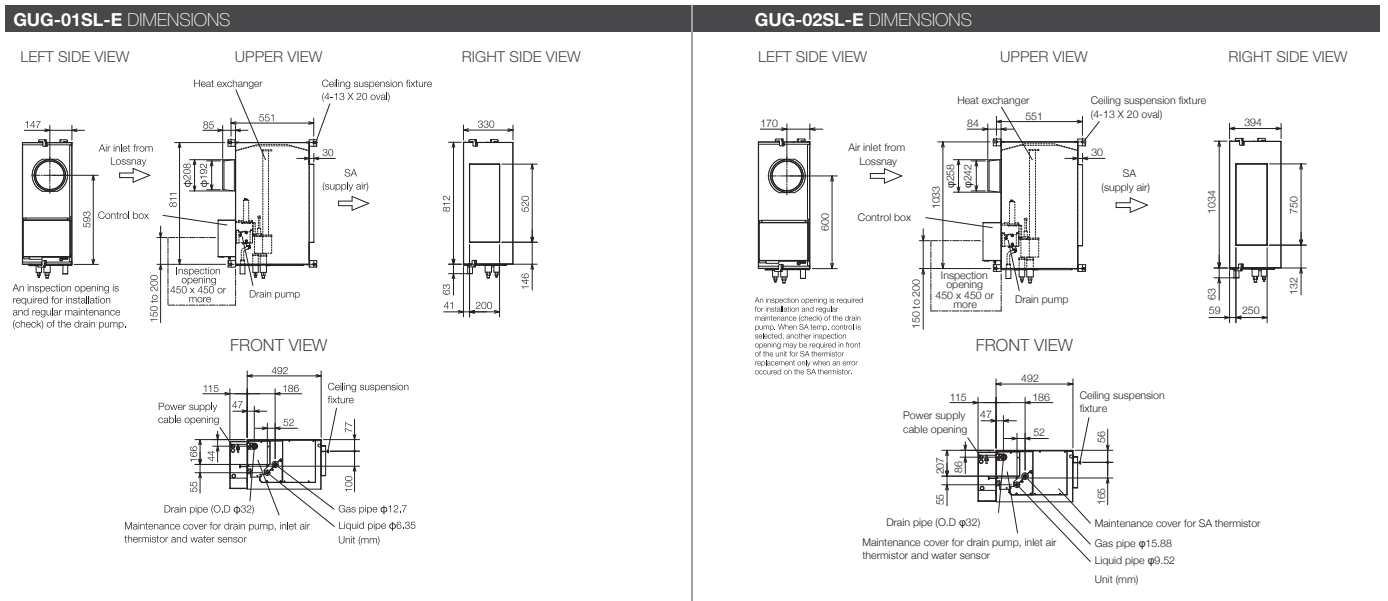
- Effective fresh air ventilation for improved air quality
- Provides heat recovery ventilation and air conditioning from the same system
- Single system reduces installation time, cost and space
- Heating / cooling with no recirculation of extracted air in the space





MODEL		GUG80-75SAV3	GUG100-85SAV3	GUG150-133SAVT	GUG160-117SAV3	GUG200-142SAV3	GUG200-159SAVT	GUG250-176SAVT
FAN SPEED 3 (75%)	Air Volume (l/s)	167	208	313	313	417	417	521
	External Static Pressure (Pa)	84	84	84	95	71	82	79
FAN SPEED 4 (100%)	Air Volume (l/s)	222	278	417	417	556	556	694
	External Static Pressure (Pa)	150	150	150	169	125	145	140
HEATING CAPACITY*1 (kW)	DX Coil Capacity	6.0	6.3	8.9	8.9	9.2	9.2	9.5
	Heat Recovery Capacity	3.5	4.3	7.4	6.6	8.6	10.3	12.1
	Total Capacity	9.5	10.6	16.3	15.5	17.8	19.5	21.6
COOLING CAPACITY*1 (kW)	DX Coil Capacity	5.0	5.3	7.1	7.1	7.4	7.4	7.8
	Heat Recovery Capacity	2.5	3.2	6.2	4.6	6.8	8.5	9.8
	Total Capacity	7.5	8.5	13.3	11.7	14.2	15.9	17.6
SHF	Nominal	0.66	0.69	0.86	0.81	0.87	0.90	0.95
	SYSTEM POWER INPUT (kW)	Heating (nominal)	2.17	2.26	3.16	3.06	3.10	3.25
	Cooling (nominal)	1.75	1.77	2.64	2.54	2.72	2.87	3.32
	PERFORMANCE INDEX*2	Heating (nominal)	4.37	4.70	5.16	5.07	5.74	6.01
Cooling (nominal)		4.28	4.81	5.03	4.61	5.21	5.54	5.31
MAX PIPE LENGTH (m)		50	50	50	50	50	50	50
MAX HEIGHT DIFFERENCE (m)		30	30	30	30	30	30	30
PIPE SIZE mm(in)	Gas	12.7 (1/2")	12.7 (1/2")	15.88 (5/8")	15.88 (5/8")	15.88 (5/8")	15.88 (5/8")	15.88 (5/8")
	Liquid	6.35 (1/4")	6.35 (1/4")	9.52 (3/8")	9.52 (3/8")	9.52 (3/8")	9.52 (3/8")	9.52 (3/8")
GUG DIMENSIONS (mm)	Width x Depth x Height	1034 x 607 x 394	1034 x 607 x 394	1130 x 576 x 404	1130 x 576 x 404	1130 x 576 x 404	1130 x 576 x 404	1130 x 576 x 404
GUG WEIGHT (kg)		26	26	28	28	28	28	28
GUG ELECTRICAL SUPPLY (supplied from outdoor unit)*3		220-240V / 50Hz	220-240V / 50Hz	220-240V / 50Hz	220-240V / 50Hz	220-240V / 50Hz	220-240V / 50Hz	220-240V / 50Hz
GUG UNIT*4		GUG-02SL-E	GUG-02SL-E	GUG-03SL-E	GUG-03SL-E	GUG-03SL-E	GUG-03SL-E	GUG-03SL-E
MR SLIM OUTDOOR UNIT		PUHZ-ZRP50VKA2	PUHZ-ZRP50VKA2	PUHZ-ZRP71VHA2	PUHZ-ZRP71VHA2	PUHZ-ZRP71VHA2	PUHZ-ZRP71VHA2	PUHZ-ZRP71VHA2
LOSSNAY UNIT		LGH-80RVX3-E	LGH-100RVX3-E	LGH-150RVXT-E	LGH-160RVX3-E	LGH-200RVX3-E	LGH-200RVXT-E	LGH-250RVXT-E
LOSSNAY CONTROLLER		PZ-62DR-EB	PZ-62DR-EB	PZ-62DR-EB	PZ-62DR-EB	PZ-62DR-EB	PZ-62DR-EB	PZ-62DR-EB

Notes: *1 The cooling and heating capacities are based on the rated airflow of fan speed 4 and the following air conditions: Cooling Indoor: 27°CDB/19°CWB Outdoor: 35°CDB/24°CWB Heating Indoor: 20°CDB/15°CWB Outdoor: 7°CDB/6°CWB. *2 Performance index is the total capacity divided by the total power consumption of the outdoor unit and Lossnay at the conditions above. *3 For electrical power requirements for Lossnay and Mr Slim outdoor unit, please refer to their respective sections. *4 GUG unit includes a dedicated controller.



Telephone: 01707 282880
email: air.conditioning@meuk.mee.com
les.mitsubishielectric.co.uk



UNITED KINGDOM Mitsubishi Electric Europe Living Environment Systems Division, Travellers Lane, Hatfield, Hertfordshire, AL10 8XB, England. Telephone: 01707 282880 Fax: 01707 278881
IRELAND Mitsubishi Electric Europe, Westgate Business Park, Ballymount, Dublin 24, Ireland. Telephone: (01) 419 8800 Fax: (01) 419 8890 International code: (003531)

Country of origin: United Kingdom - Italy - Turkey - Japan - Thailand - Malaysia. ©Mitsubishi Electric Europe 2023. Mitsubishi and Mitsubishi Electric are trademarks of Mitsubishi Electric Europe B.V. The company reserves the right to make any variation in technical specification to the equipment described, or to withdraw or replace products without prior notification or public announcement. Mitsubishi Electric is constantly developing and improving its products. All descriptions, illustrations, drawings and specifications in this publication present only general particulars and shall not form part of any contract. All goods are supplied subject to the Company's General Conditions of Sale, a copy of which is available on request. Third-party product and brand names may be trademarks or registered trademarks of their respective owners.

Note: Refer to 'Installation Manual' and 'Instruction Book' for further 'Technical Information'. The fuse rating is for guidance only and please refer to the relevant databook for detailed specification. It is the responsibility of a qualified electrician/electrical engineer to select the correct cable size and fuse rating based on current regulation and site specific conditions. Mitsubishi Electric's air conditioning equipment and heat pump systems contain a fluorinated greenhouse gas, R410A (GWP:2088), R32 (GWP:675), R407C (GWP:1774), R134a (GWP:1430), R513A (GWP:631), R454B (GWP:466), R1234ze (GWP:7) or R1234yf (GWP:4). *These GWP values are based on Regulation (EU) No 517/2014 from IPCC 4th edition. In case of Regulation (EU) No.526/2011 from IPCC 3rd edition, these are as follows: R410A (GWP:1975), R32 (GWP:550), R407C (GWP:1650) or R134a (GWP:1300).

Effective as of March 2023

