

PAC-IF013B-E R32 & R410A

Air Handling Unit Controller

Mr. SLIM™

The Air Handling Unit Controller can interface Mitsubishi Electric Mr Slim outdoor units to third party air handling units.

Up to six Mr Slim outdoor units can be used on a single air handling unit, providing a wide range of heating and cooling capacities.



Key Features & Benefits:

- Integration of DX heating and cooling to your air handling unit or air flow device, via packaged Mr Slim outdoor unit(s)
- Flexible control options between automatic (native Mitsubishi Electric), or manual step requests via external inputs with digital and analogue inputs, including direct Modbus
- Intelligent Multiple Outdoor Unit Control (IMOU) of up to 6 outdoor units per system in manual step mode, optimises the capacity steps of the outdoor units, rotates run hours with automatic backup, and minimises simultaneous defrosting
- Includes SD card to record operation history and perform software updates
- Board included as standard with Wizard AHU models

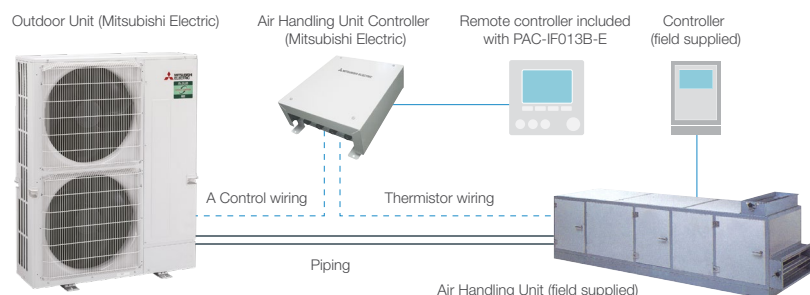




PAC-IF013B-E		SIZE 35	SIZE 50	SIZE 60	SIZE 71	SIZE 100	SIZE 125	SIZE 140	SIZE 200	SIZE 250		
CAPACITY (kW)	Heating (nominal)	4.1	6.0	7.0	8.0	11.2	14.0	16.0	22.4	27.0		
	Cooling (nominal)	3.5	5.0	6.0	7.1	10.0	12.5	14.0	20.0	25.0		
COMPATIBLE O.U	PUZ-ZM (R32)	PUZ-ZM35VKA2	PUZ-ZM50VKA2	PUZ-ZM60VHA2	PUZ-ZM71VHA2	PUZ-ZM100VKA2/YKA2	PUZ-ZM125VKA2/YKA2	PUZ-ZM140VKA2/YKA2	PUZ-ZM200VKA2	PUZ-ZM250VKA2		
	PUZ-M (R32)	N/A	N/A	N/A	N/A	N/A	N/A	N/A	PUZ-M200VKA2	PUZ-M250VKA2		
	PUHZ-ZRP (R410A)	PUHZ-ZRP35VKA2	PUHZ-ZRP50VKA2	PUHZ-ZRP60VHA2	PUHZ-ZRP71VHA2	PUHZ-ZRP100VKA3/YKA3	PUHZ-ZRP125VKA3/YKA3	PUHZ-ZRP140VKA3/YKA3	PUHZ-ZRP200VKA3	PUHZ-ZRP250VKA3		
	PUHZ-P (R410A)	N/A	N/A	N/A	N/A	N/A	N/A	N/A	PUHZ-P200VKA3	PUHZ-P250VKA3		
PIPE SIZE mm (in)	PUZ-ZM/M (R32)	Gas 12.7 (1/2") Liquid 6.35 (1/4")	Gas 12.7 (1/2") Liquid 6.35 (1/4")	Gas 15.88 (5/8") Liquid 9.52 (3/8")	Gas 15.88 (5/8") Liquid 9.52 (3/8")	Gas 15.88 (5/8") Liquid 9.52 (3/8")	Gas 15.88 (5/8") Liquid 9.52 (3/8")	Gas 15.88 (5/8") Liquid 9.52 (3/8")	Gas 28.58 (1 1/8") Liquid 9.52 (3/8")	Gas 28.58 (1 1/8") Liquid 12.7 (1/2")		
	PUHZ-ZRP/P (R410A)	Gas 12.7 (1/2") Liquid 6.35 (1/4")	Gas 12.7 (1/2") Liquid 6.35 (1/4")	Gas 15.88 (5/8") Liquid 9.52 (3/8")	Gas 15.88 (5/8") Liquid 9.52 (3/8")	Gas 15.88 (5/8") Liquid 9.52 (3/8")	Gas 15.88 (5/8") Liquid 9.52 (3/8")	Gas 15.88 (5/8") Liquid 9.52 (3/8")	Gas 28.58 (1 1/8") Liquid 9.52 (3/8")	Gas 28.58 (1 1/8") Liquid 12.7 (1/2")		
	HEAT EXCHANGER (cm ³)	Max Volume	>30m	1.05	1.5	1.8	2.13	3.0	3.75	4.2	6.0	7.5
			20m	1.35	1.8	2.7	3.03	3.9	4.65	5.1	7.8	9.3
		10m	1.65	2.1	3.6	3.93	4.8	5.55	6.0	9.6	11.1	
	Min Volume		0.35	0.5	0.6	0.71	1.0	1.25	1.4	2.0	2.5	
DIMENSIONS (mm)	Width x Depth x Height	336 x 69 x 278	336 x 69 x 278	336 x 69 x 278	336 x 69 x 278	336 x 69 x 278	336 x 69 x 278	336 x 69 x 278	336 x 69 x 278	336 x 69 x 278	336 x 69 x 278	
WEIGHT (No Accessories) (kg)		2.5	2.5	2.5	2.5	2.5	2.5	2.5	2.5	2.5		

Notes: One air handling unit controller is required per outdoor unit. Cooling: Indoor 27°C DB/19°C WB, Outdoor 35°C DB/24°C WB. Heating: Indoor 20°C DB, Outdoor 7°C DB/6°C WB.

EXAMPLE:



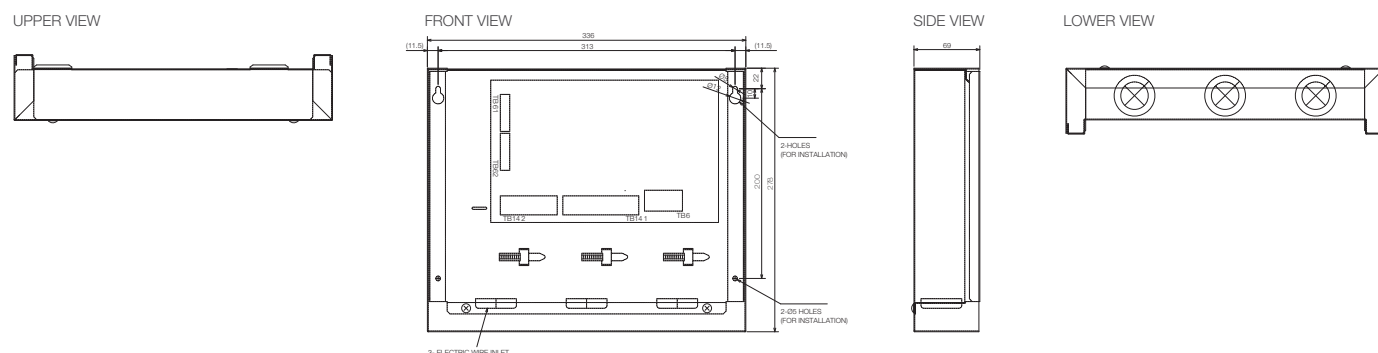
Notes:

One air handling unit controller is required per heat exchanger. If using more than one air handling unit controller on a single AHU, there are two options:

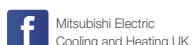
1. Connect 1 x PAC-IF013B-E unit per heat exchanger - these will operate as separate circuits with a controller on each which is included.
2. Connect 1 x PAC-IF013B-E for the first heat exchanger, then up to 5 additional slave PAC-SIF013B-E units. The included controller with the PAC-IF013B-E will additionally control the slave units

For further information of this feature please consult your local sales office.

PAC-IF013B-E DIMENSIONS



Telephone: 01707 282880
email: air.conditioning@meeuk.com
les.mitsubishielectric.co.uk



UNITED KINGDOM Mitsubishi Electric Europe Living Environment Systems Division, Travellers Lane, Hatfield, Hertfordshire, AL10 8XB, England. Telephone: 01707 282880 Fax: 01707 278881
IRELAND Mitsubishi Electric Europe, Westgate Business Park, Ballymount, Dublin 24, Ireland. Telephone: (01) 419 8800 Fax: (01) 419 8890 International code: (003531)

Country of origin: United Kingdom - Italy - Turkey - Japan - Thailand - Malaysia. ©Mitsubishi Electric Europe 2023. Mitsubishi and Mitsubishi Electric are trademarks of Mitsubishi Electric Europe B.V. The company reserves the right to make any variation in technical specification to the equipment described, or to withdraw or replace products without prior notification or public announcement. Mitsubishi Electric is constantly developing and improving its products. All descriptions, illustrations, drawings and specifications in this publication present only general particulars and shall not form part of any contract. All goods are supplied subject to the Company's General Conditions of Sale, a copy of which is available on request. Third-party product and brand names may be trademarks or registered trademarks of their respective owners.

Note: Refer to 'Installation Manual' and 'Instruction Book' for further 'Technical Information'. The fuse rating is for guidance only and please refer to the relevant databook for detailed specification. It is the responsibility of a qualified electrician/electrical engineer to select the correct cable size and fuse rating based on current regulation and site specific conditions. Mitsubishi Electric's air conditioning equipment and heat pump systems contain a fluorinated greenhouse gas, R410A (GWP:2088), R32 (GWP:675), R407C (GWP:1774), R134a (GWP:1430), R513A (GWP:631), R454B (GWP:466), R1234ze (GWP:7) or R1234yf (GWP:4). *These GWP values are based on Regulation (EU) No 517/2014 from IPCC 4th edition. In case of Regulation (EU) No.626/2011 from IPCC 3rd edition, these are as follows. R410A (GWP:1975), R32 (GWP:550), R407C (GWP:1650) or R134a (GWP:1300).

Effective as of April 2023

