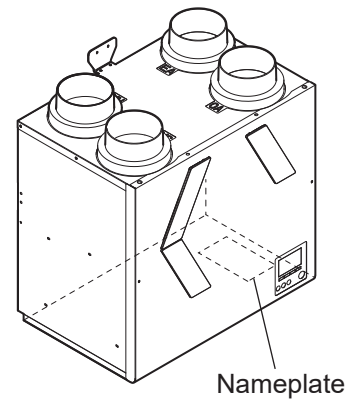


# LOSSNAY HEAT RECOVERY VENTILATOR HANDBOOK

---

## MODELS

**VL-250CZPVU-L-E**  
**VL-250CZPVU-R-E**  
**VL-350CZPVU-L-E**  
**VL-350CZPVU-R-E**



\* The figure shows VL-350CZPVU-R-E.

## Filter (Optional)

<b>P-250F-E</b>	<b>P-350F-E</b>
<b>P-250MF-E</b>	<b>P-350MF-E</b>
<b>P-250NF-E</b>	<b>P-350NF-E</b>
<b>P-250PF-E</b>	<b>P-350PF-E</b>
<b>P-250SF-E</b>	<b>P-350SF-E</b>

**Warning:**

Repair work must be performed by the manufacturer, its service agent or a similarly qualified person in order to avoid hazards.



**MITSUBISHI ELECTRIC CORPORATION**

# Contents

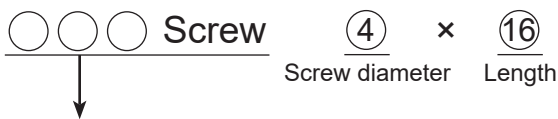
Parts catalog .....	3-27
VL-250CZPVU-L-E .....	4-9
VL-250CZPVU-R-E .....	10-15
VL-350CZPVU-L-E .....	16-21
VL-350CZPVU-R-E .....	22-27

# Parts catalog

## Please note the following when using the parts catalog.

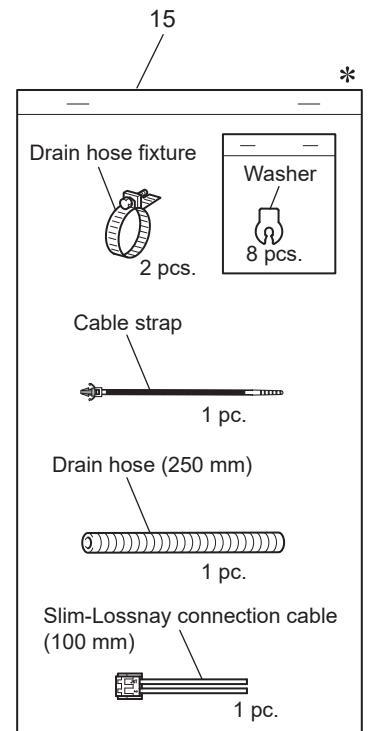
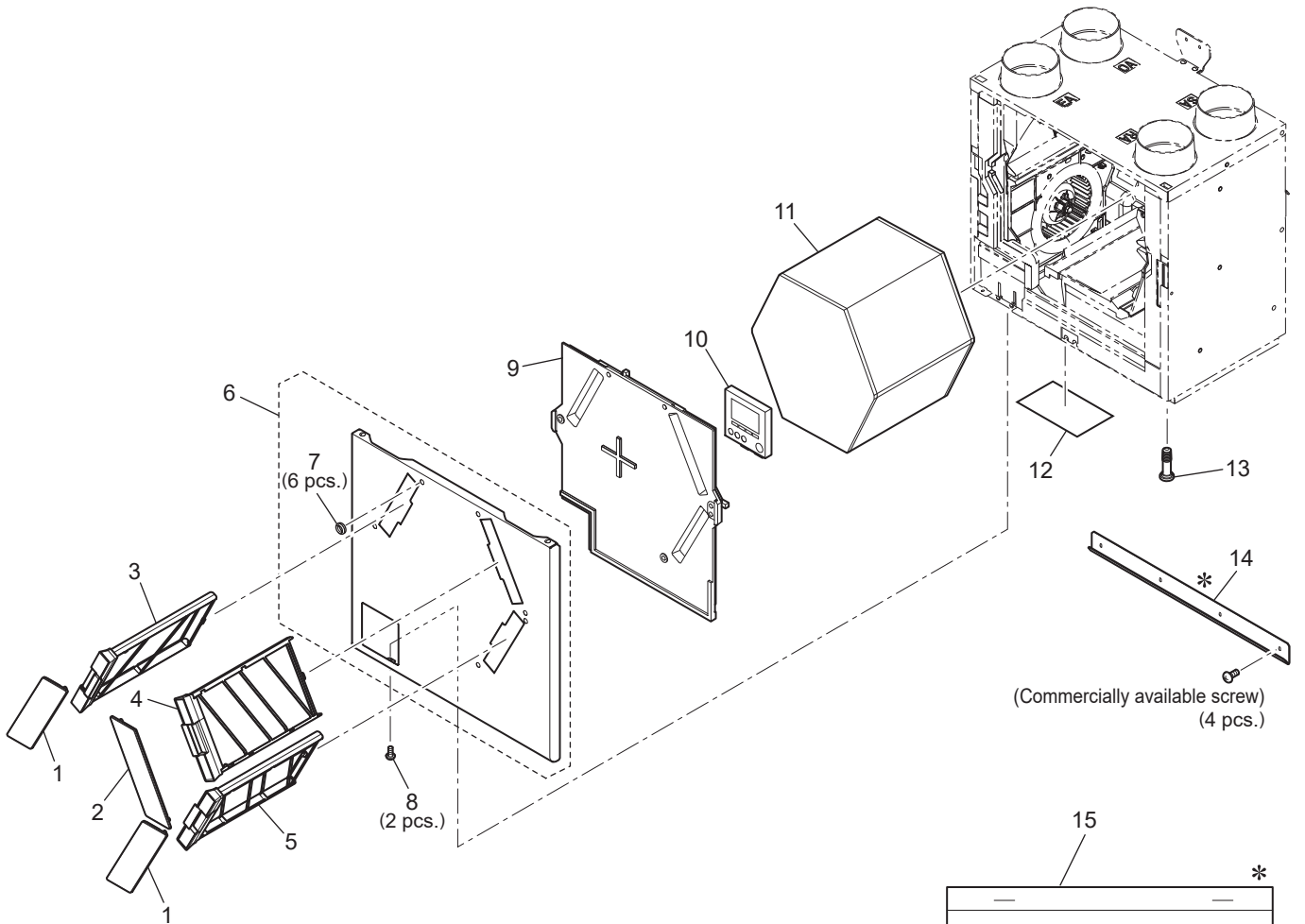
1. When ordering parts, the part number, part name, and the number of parts are required.
2. It may take time for you to receive the parts. Make an inquiry about a rush order.
3. Specifications may be subject to change without notice.
4. Parts marked with  and  are critical for safety.
5. To maintain safety and performance, use the parts specified in the parts catalog.
6. When replacing the parts to which the nameplate is attached, remove the nameplate and attach it to the new parts.

## Description of screw abbreviations



Abbreviation	Description
PC screw	Cross recess flat head machine screw
PRC screw	Cross recess oval head machine screw
PP screw	Cross recess pan head machine screw
SW · PP screw	Cross recess pan head screw with spring washer
PPT screw	Cross recess tapping screw
PCT screw	Cross recess flat head tapping screw
PTT screw	Cross recess truss head tapping screw
PT screw	Cross recess truss head machine screw
SET screw	Slotted head stop screw
SQ · SET screw	Square head stop screw
P · SET screw	Pan head stop screw
PMT screw	Primer truss head screw
HS · SET screw	Hexagon head stop screw
P · R · W screw	Cross recess round wood screw
P · C · W screw	Cross recess flat head wood screw
P · R · C · W screw	Cross recess round and flat wood screw
R · W screw	Slotted round wood screw
PW · PP screw	Cross recess pan head screw with small washer
SW-PW · PP screw	Cross recess pan head machine screw with spring washer and flat washer

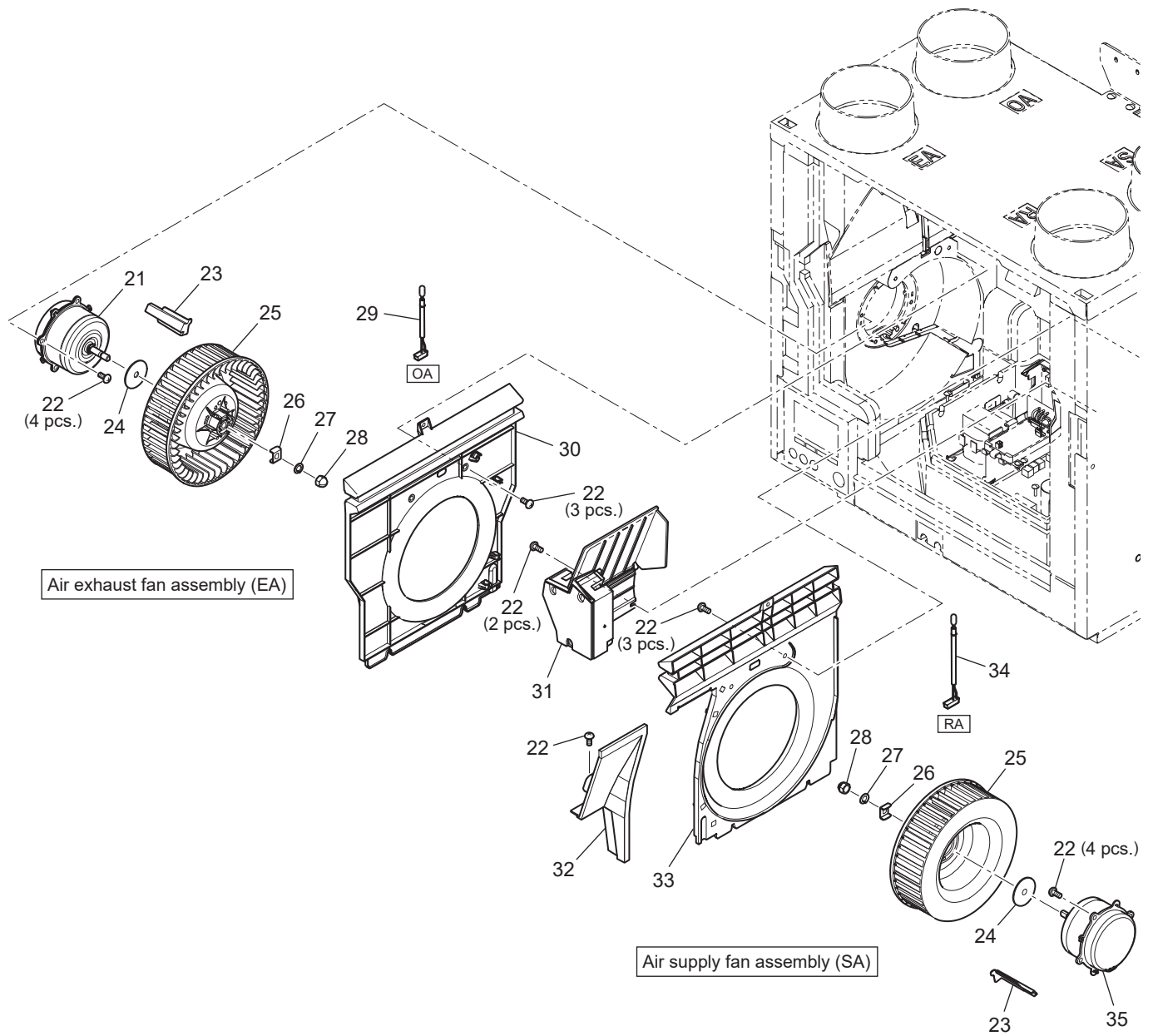
# VL-250CZPVU-L-E



\* shows accessory parts.

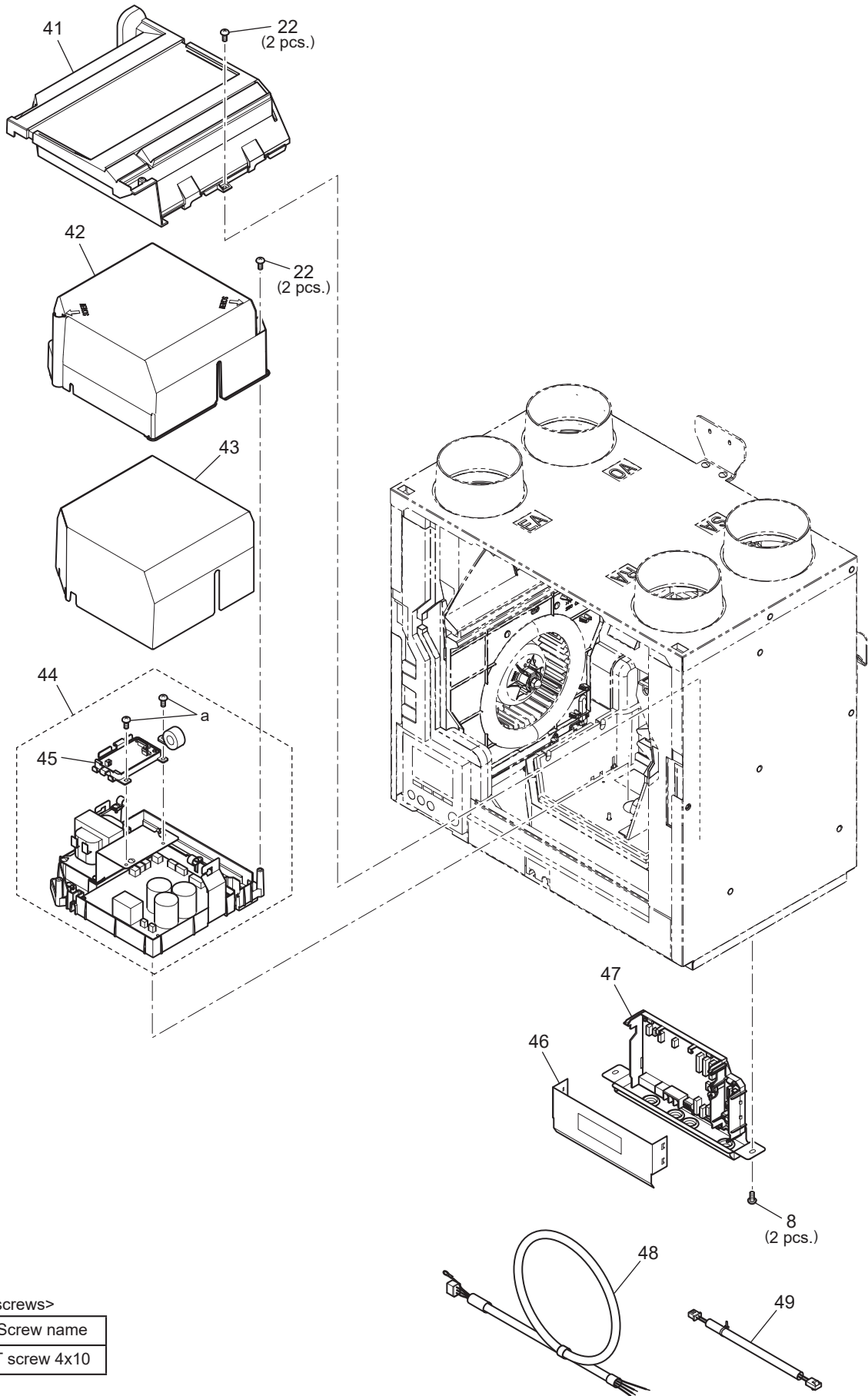
## VL-250CZPVU-L-E

No.	Name of part	Parts No.	Q'ty pcs/unit	Critical for safety	Remarks
1	Filter cover (B)	W36 008 717	2		
2	Filter cover (A)	W36 008 718	1		
3	Filter case (OA)	W36 008 719	1		
4	Filter case (RA)	W36 008 720	1		
5	Filter case (SA)	W36 008 721	1		
6	Front casing (OUT)	W36 008 830	1		
7	Bush	W36 008 225	6		
8	Spl PT screw 4x10	W36 008 045	4		
9	Front casing (IN)	W36 008 831	1		
10	Controller	W36 008 722	1	⚠	
11	Heat exchanger	W36 008 710	1	⚠	
12	Wiring diagram	W36 008 358	1		
13	Drain cap	W36 008 309	1		
14	Wall bracket	W36 008 380	1		
15	Parts in bag	W36 008 588	1		



## VL-250CZPVU-L-E

No.	Name of part	Parts No.	Q'ty pcs/unit	Critical for safety	Remarks
21	DC motor (EA)	W36 008 453	1	⚠	
22	Spl PTT screw 4x14	W36 008 046	21		
23	Cover	W36 008 832	2		
24	Special washer (8)	W50 003 477	2		Dia. 40mm
25	Centrifugal fan	W36 008 480	2	⚠	Dia. 180
26	Tab washer	W36 008 077	2		
27	Spring washer (8)	W00 000 129	2		
28	Special nut (M8)	W00 000 067	2		Left-handed
29	Thermistor	W36 008 167	1	⚠	OA
30	Orifice (EA)	W36 008 833	1		
31	Damper assembly	W36 008 715	1	⚠	
32	Bypass plate	W36 008 835	1		
33	Orifice (SA)	W36 008 834	1		
34	Thermistor	W36 008 168	1	⚠	RA
35	DC motor (SA)	W36 008 454	1	⚠	



<Standard screws>

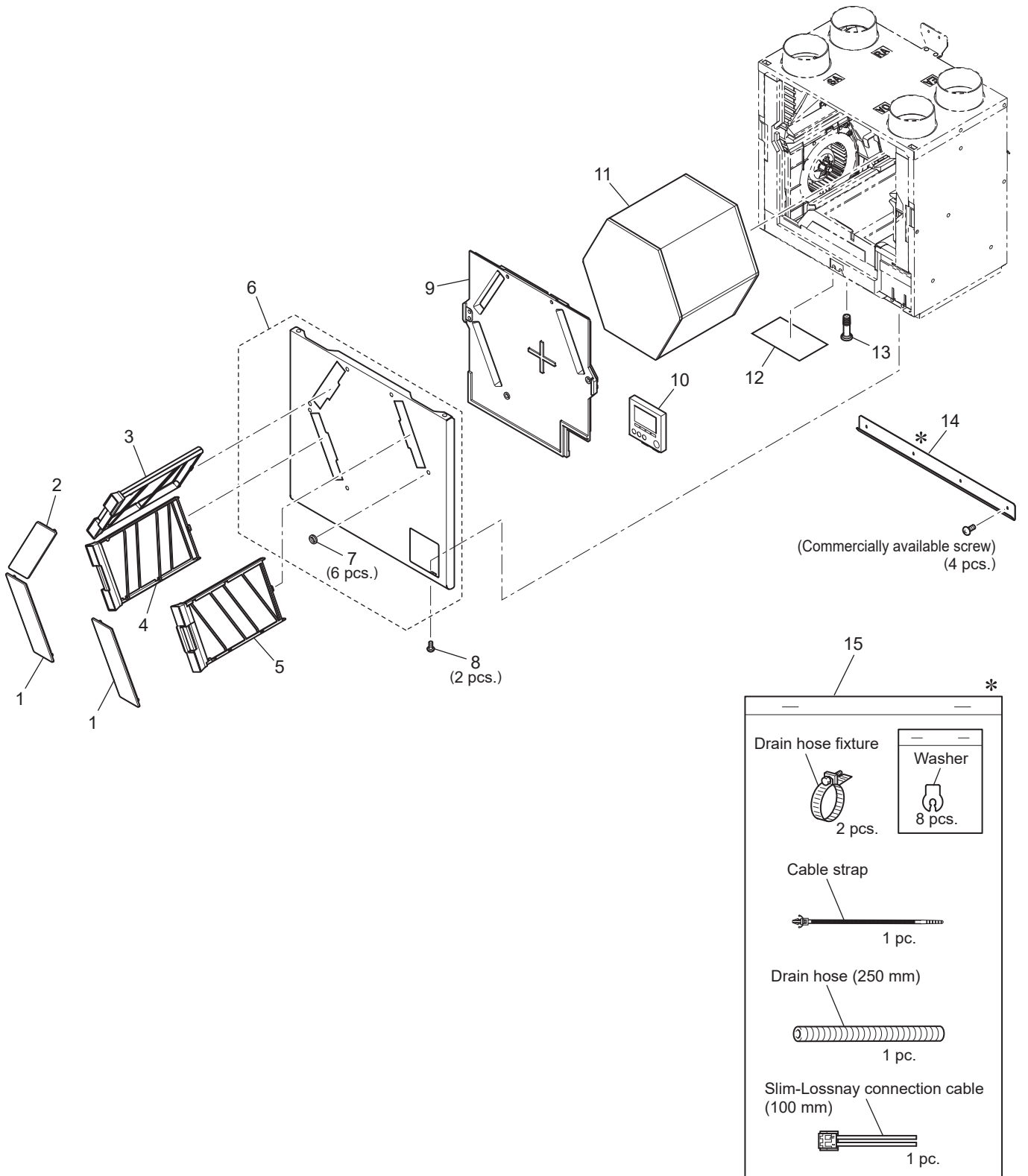
Symbol	Screw name
a	PT screw 4x10



## VL-250CZPVU-L-E

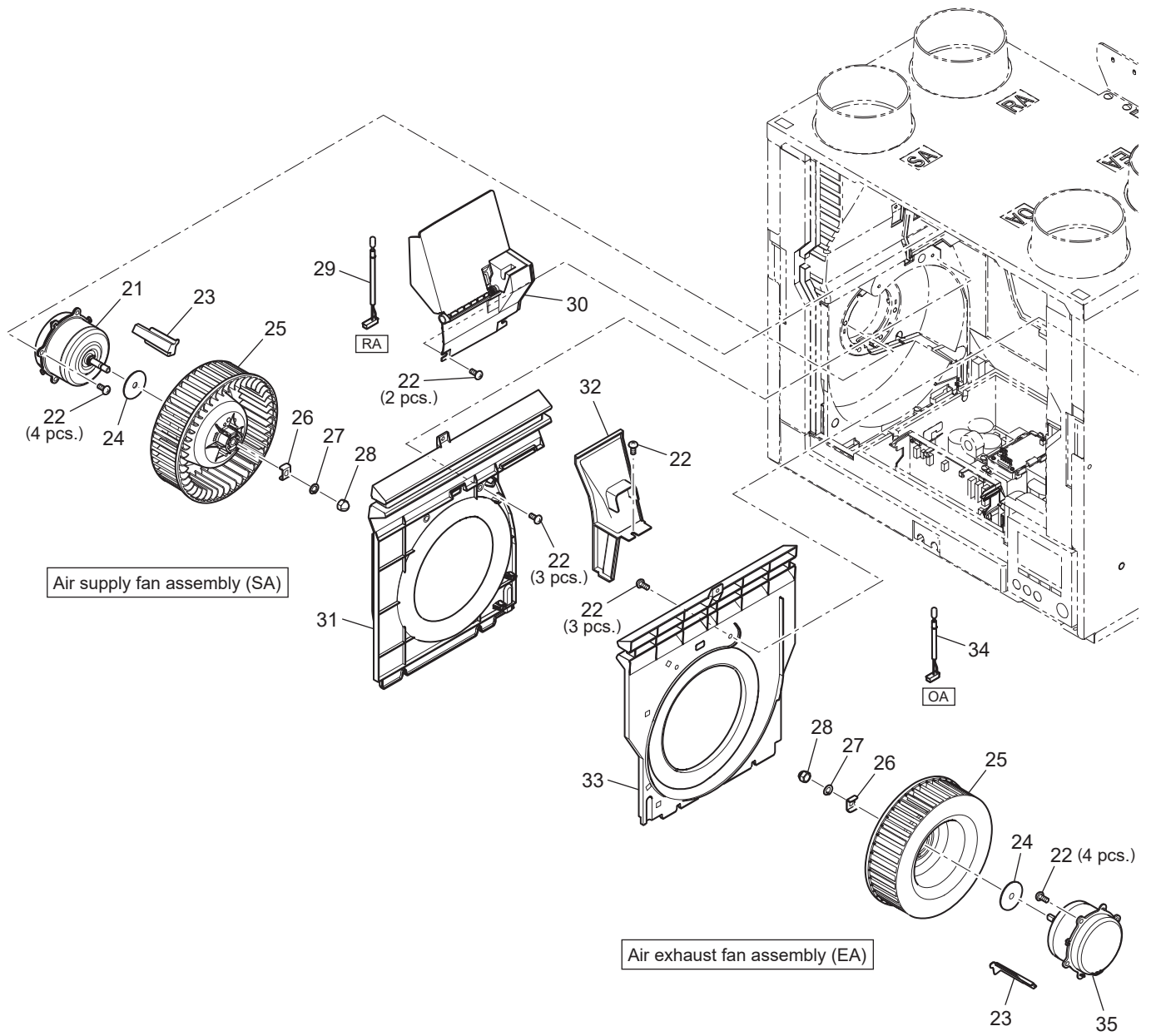
No.	Name of part	Parts No.	Q'ty pcs/unit	Critical for safety	Remarks
41	PCB plate	W36 008 836	1		
42	PCB cover (UP)	W36 008 704	1		
43	PCB cover (LOW)	W36 008 705	1		
44	Control box	W36 008 235	1	⚠	X07DC-E2-P,VL-40P
45	Circuit board	W36 008 236	1	⚠	VL-40P
46	Insulating sheet	W36 008 226	1	⚠	
47	Circuit board	W36 008 237	1	⚠	X07DC-E2-C,VL-40S
48	Power supply cord	W36 008 220	1	⚠	1850mm
49	Lead wire	W36 008 231	1	⚠	Controller

# VL-250CZPVU-R-E



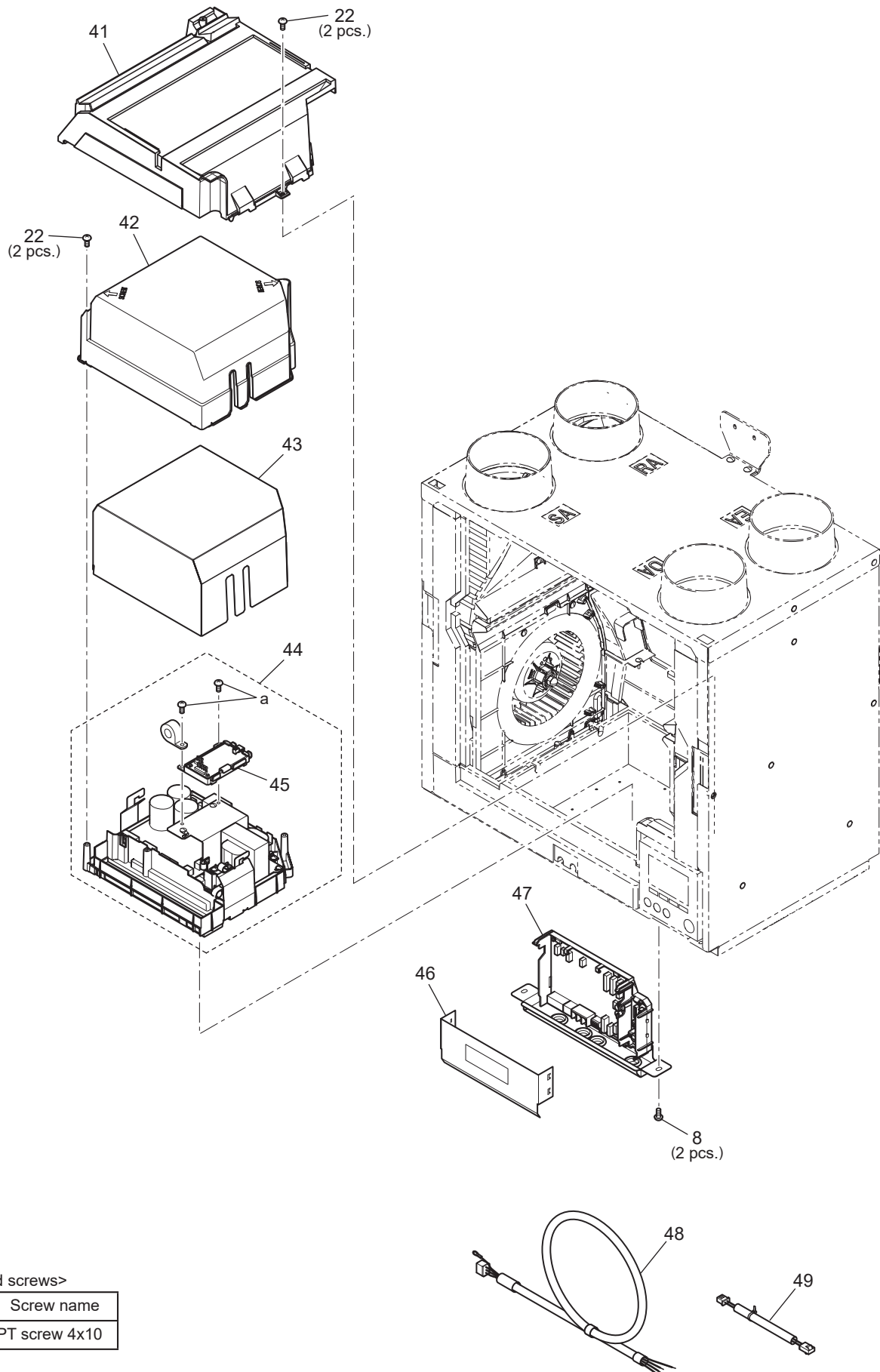
## VL-250CZPVU-R-E

No.	Name of part	Parts No.	Q'ty pcs/unit	Critical for safety	Remarks
1	Filter cover (A)	W36 008 718	2		
2	Filter cover (B)	W36 008 717	1		
3	Filter case (RA)	W36 008 723	1		
4	Filter case (SA)	W36 008 724	1		
5	Filter case (OA)	W36 008 725	1		
6	Front casing (OUT)	W36 008 837	1		
7	Bush	W36 008 225	6		
8	Spl PT screw 4x10	W36 008 045	4		
9	Front casing (IN)	W36 008 838	1		
10	Controller	W36 008 722	1	⚠	
11	Heat exchanger	W36 008 710	1	⚠	
12	Wiring diagram	W36 008 358	1		
13	Drain cap	W36 008 309	1		
14	Wall bracket	W36 008 380	1		
15	Parts in bag	W36 008 588	1		



## VL-250CZPVU-R-E

No.	Name of part	Parts No.	Q'ty pcs/unit	Critical for safety	Remarks
21	DC motor (SA)	W36 008 454	1	⚠	
22	Spl PTT screw 4x14	W36 008 046	21		
23	Cover	W36 008 832	2		
24	Special washer (8)	W50 003 477	2		Dia. 40mm
25	Centrifugal fan	W36 008 480	2	⚠	Dia. 180
26	Tab washer	W36 008 077	2		
27	Spring washer (8)	W00 000 129	2		
28	Special nut (M8)	W00 000 067	2		Left-handed
29	Thermistor	W36 008 169	1	⚠	RA
30	Damper assembly	W36 008 715	1	⚠	
31	Orifice (SA)	W36 008 834	1		
32	Bypass plate	W36 008 835	1		
33	Orifice (EA)	W36 008 833	1		
34	Thermistor	W36 008 167	1	⚠	OA
35	DC motor (EA)	W36 008 453	1	⚠	



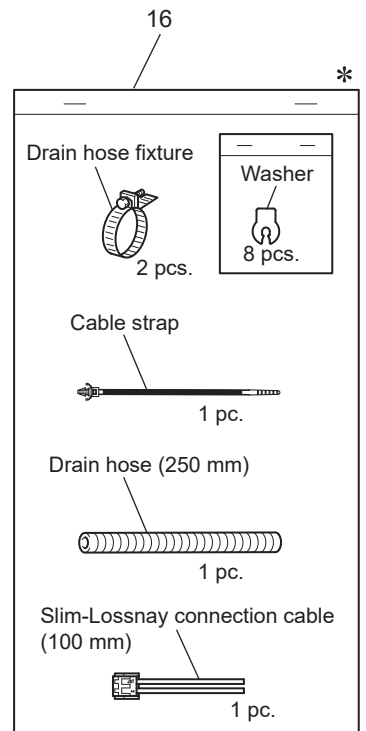
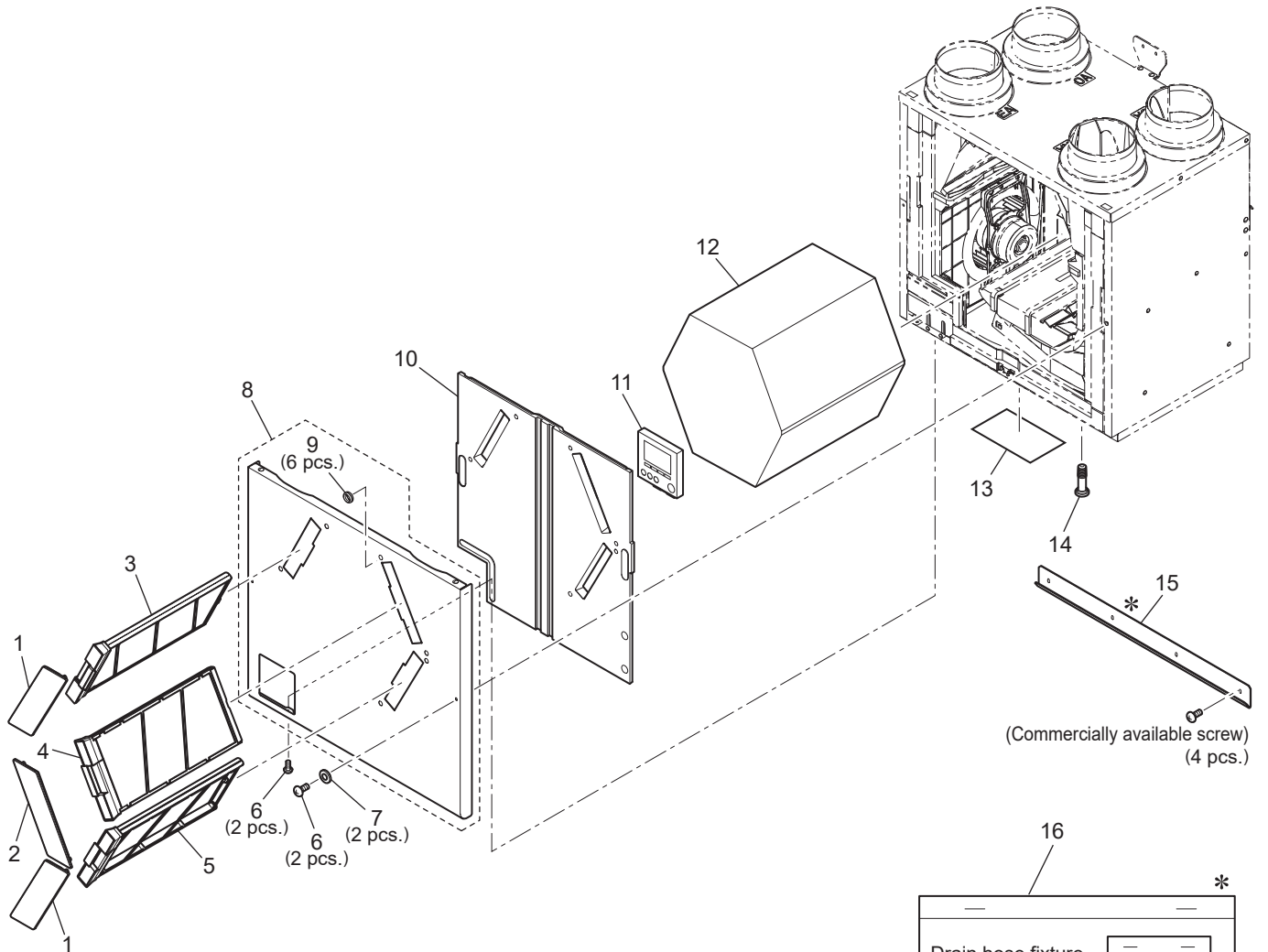
<Standard screws>

Symbol	Screw name
a	PT screw 4x10

## VL-250CZPVU-R-E

No.	Name of part	Parts No.	Q'ty pcs/unit	Critical for safety	Remarks
41	PCB plate	W36 008 836	1		
42	PCB cover (UP)	W36 008 704	1		
43	PCB cover (LOW)	W36 008 705	1		
44	Control box	W36 008 238	1	⚠	X07DC-E2-P,VL-40P
45	Circuit board	W36 008 236	1	⚠	VL-40P
46	Insulating sheet	W36 008 226	1	⚠	
47	Circuit board	W36 008 239	1	⚠	X07DC-E2-C,VL-40S
48	Power supply cord	W36 008 220	1	⚠	1850mm
49	Lead wire	W36 008 232	1	⚠	Controller

# VL-350CZPVU-L-E

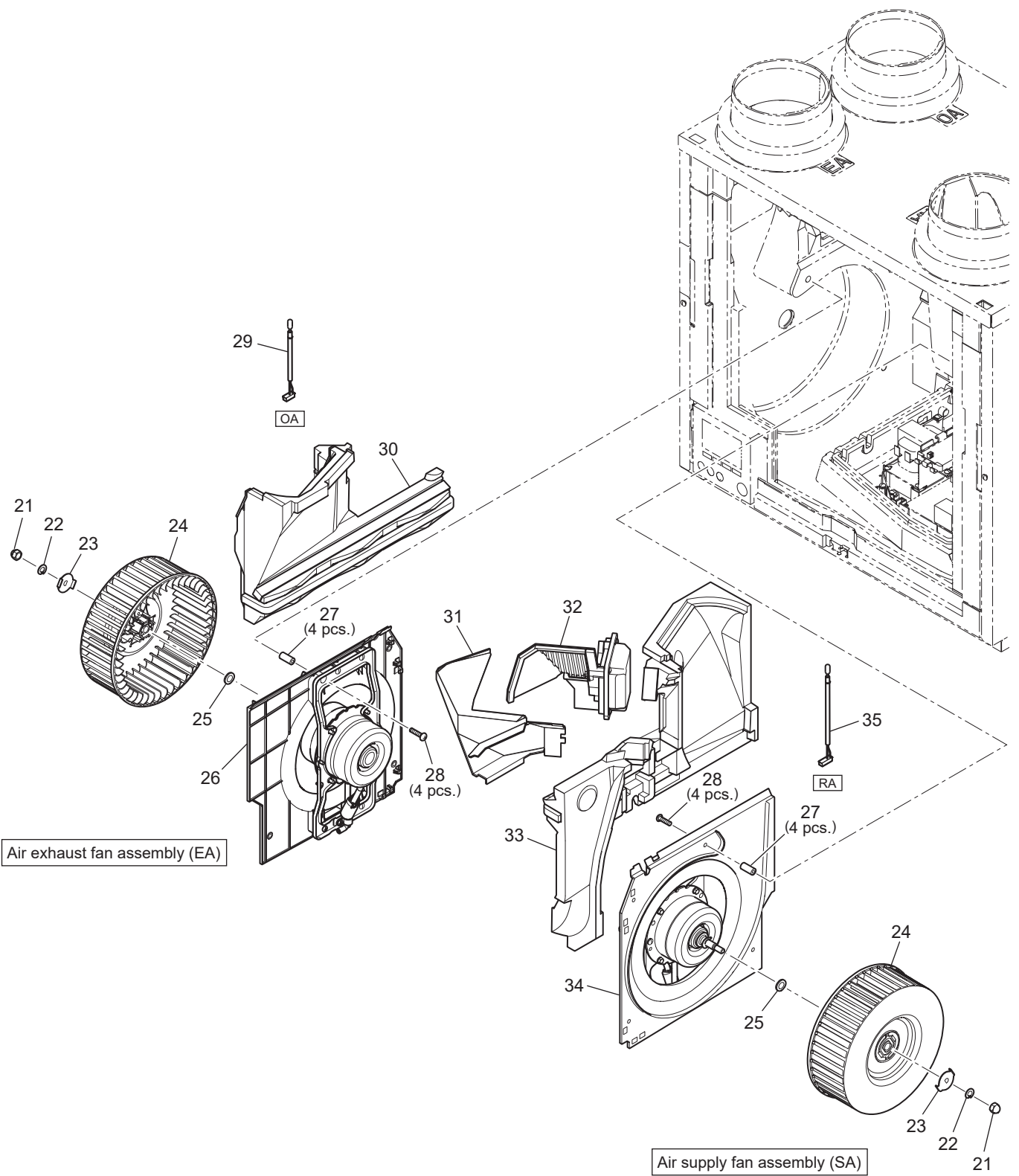


\* shows accessory parts.



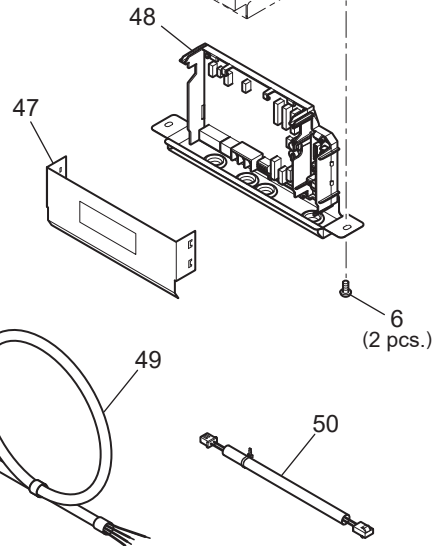
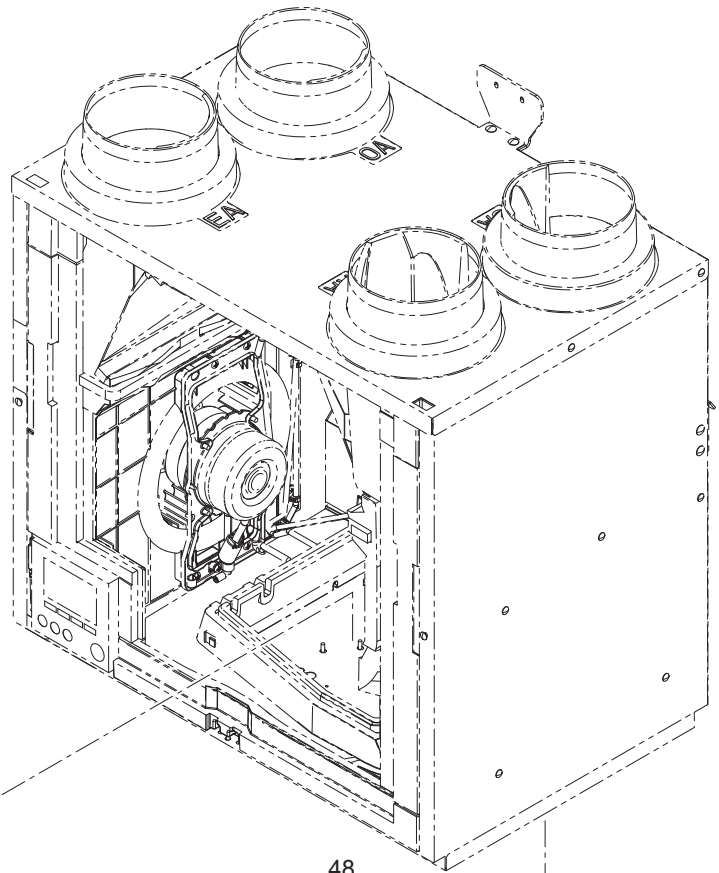
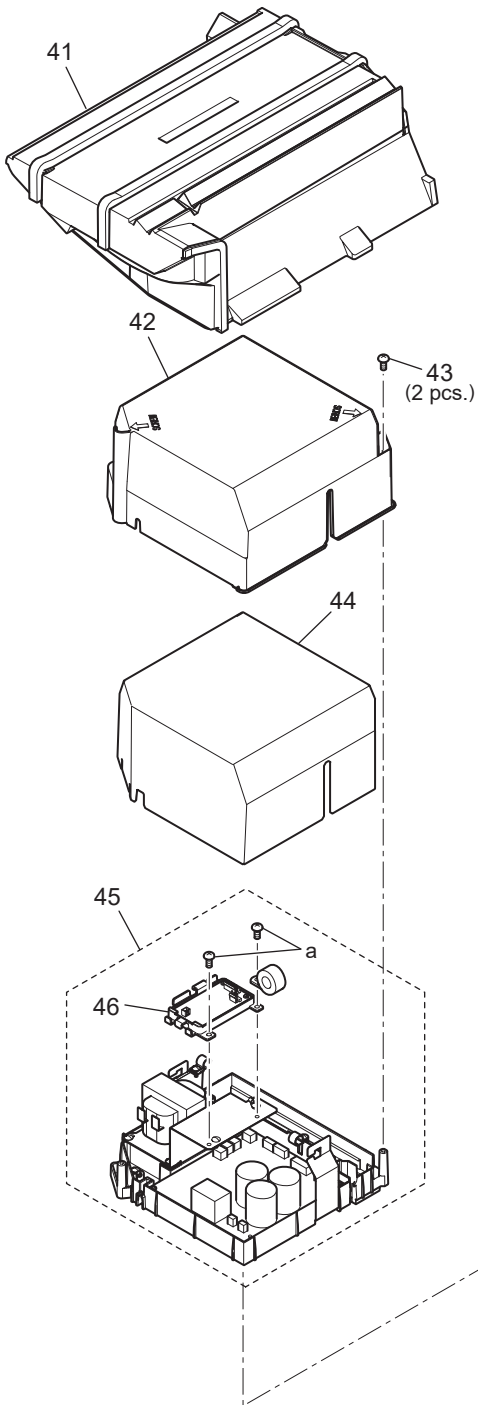
## VL-350CZPVU-L-E

No.	Name of part	Parts No.	Q'ty pcs/unit	Critical for safety	Remarks
1	Filter cover (B)	W36 008 717	2		
2	Filter cover (A)	W36 008 718	1		
3	Filter case (OA)	W36 008 726	1		
4	Filter case (RA)	W36 008 727	1		
5	Filter case (SA)	W36 008 728	1		
6	Spl PT screw 4x10	W36 008 045	6		
7	Special washer (3)	W00 000 167	2		
8	Front casing (OUT)	W36 008 839	1		
9	Bush	W36 008 225	6		
10	Front casing (IN)	W36 008 840	1		
11	Controller	W36 008 722	1	⚠	
12	Heat exchanger	W36 008 711	1	⚠	
13	Wiring diagram	W36 008 358	1		
14	Drain cap	W36 008 309	1		
15	Wall bracket	W36 008 381	1		
16	Parts in bag	W36 008 588	1		



## VL-350CZPVU-L-E

No.	Name of part	Parts No.	Q'ty pcs/unit	Critical for safety	Remarks
21	Special nut (M8)	W36 008 067	2		
22	Spring washer (8)	W00 000 126	2		
23	Tab washer	W00 000 134	2		
24	Centrifugal fan	W36 008 481	2	⚠	Dia. 210
25	Washer (10)	W36 008 071	2		
26	DC motor assy (EA)	W36 008 729	1	⚠	With fan casing
27	Spacer	W36 008 095	8		6X15
28	Spl PTT screw 4x30	W36 008 047	8		
29	Thermistor	W36 008 170	1	⚠	OA
30	Element guide (OA)	W36 008 841	1		
31	Damper frame	W36 008 716	1		
32	Damper assembly	W36 008 731	1	⚠	
33	Element guide (RA)	W36 008 842	1		
34	DC motor assy (SA)	W36 008 730	1	⚠	With fan casing
35	Thermistor	W36 008 171	1	⚠	RA



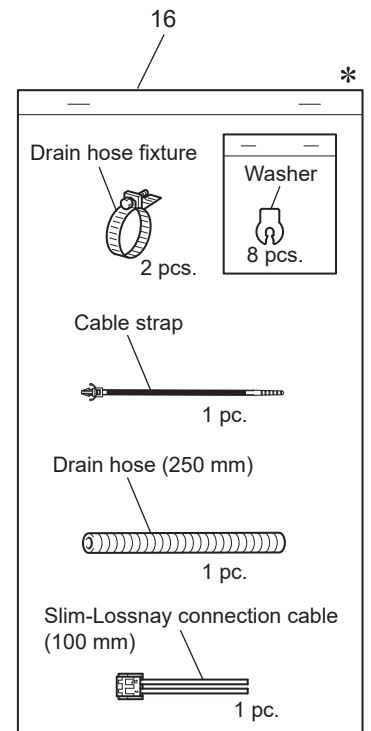
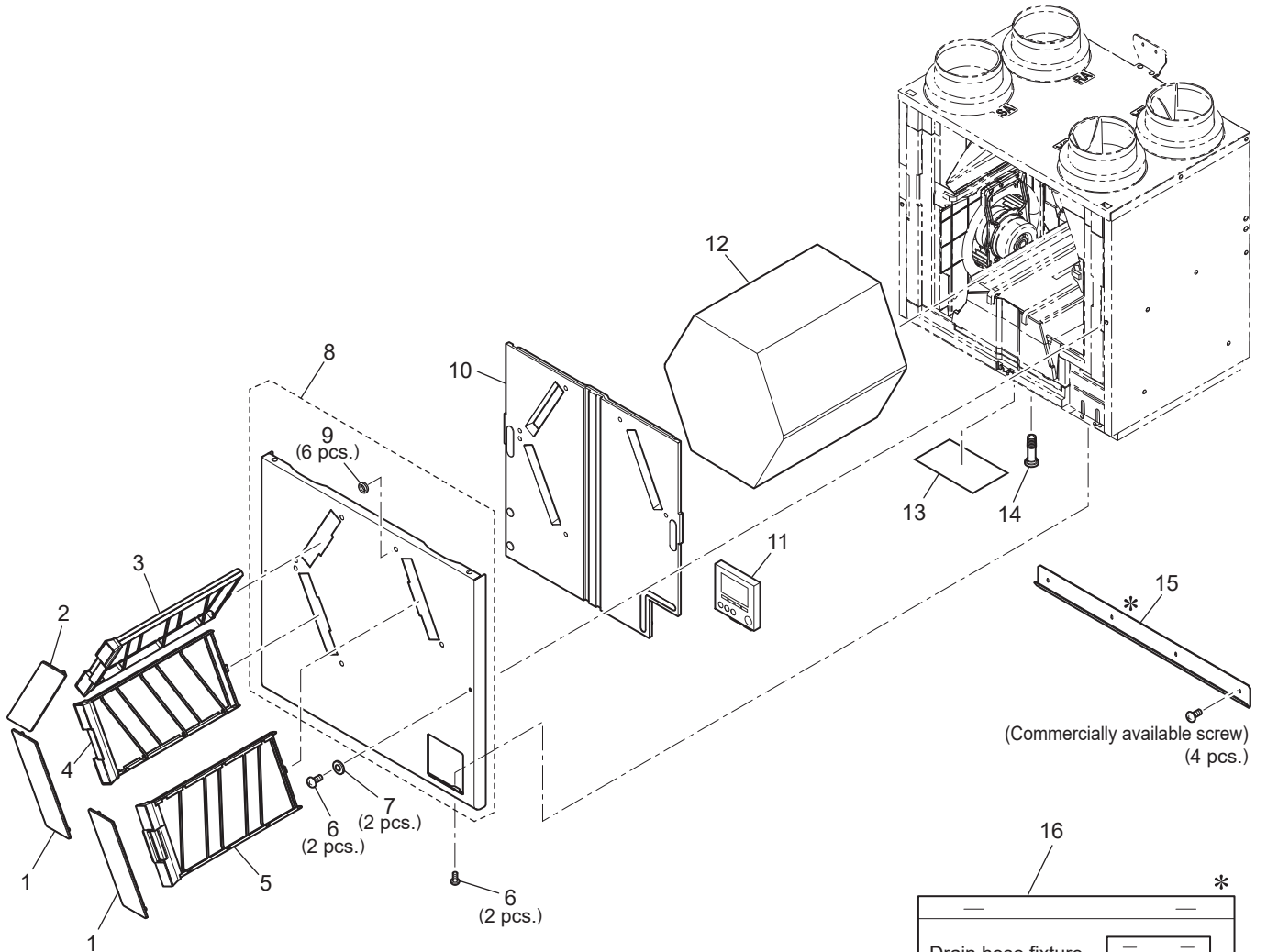
<Standard screws>

Symbol	Screw name
a	PT screw 4x10

## VL-350CZPVU-L-E

No.	Name of part	Parts No.	Q'ty pcs/unit	Critical for safety	Remarks
41	PCB plate	W36 008 843	1		
42	PCB cover (UP)	W36 008 704	1		
43	Spl screw PTT 4x12	W00 000 046	2		SUS
44	PCB cover (LOW)	W36 008 705	1		
45	Control box	W36 008 235	1	⚠	X07DC-E2-P
46	Circuit board	W36 008 236	1	⚠	VL-40P
47	Insulating sheet	W36 008 226	1	⚠	
48	Circuit board	W36 008 237	1	⚠	X07DC-E2-C
49	Power supply cord	W36 008 220	1	⚠	1850mm
50	Lead wire	W36 008 231	1	⚠	Controller

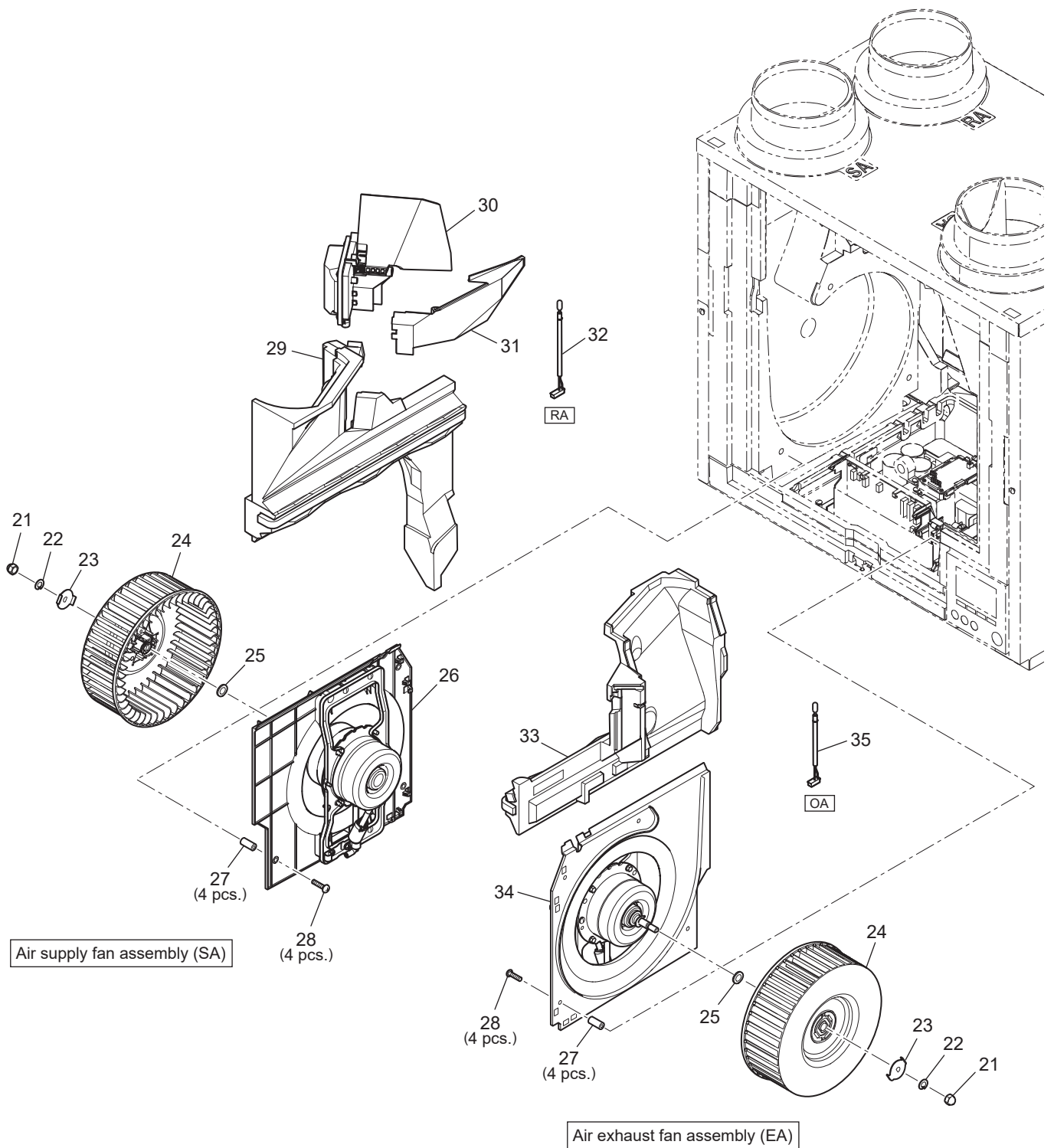
# VL-350CZPVU-R-E



\* shows accessory parts.

## VL-350CZPVU-R-E

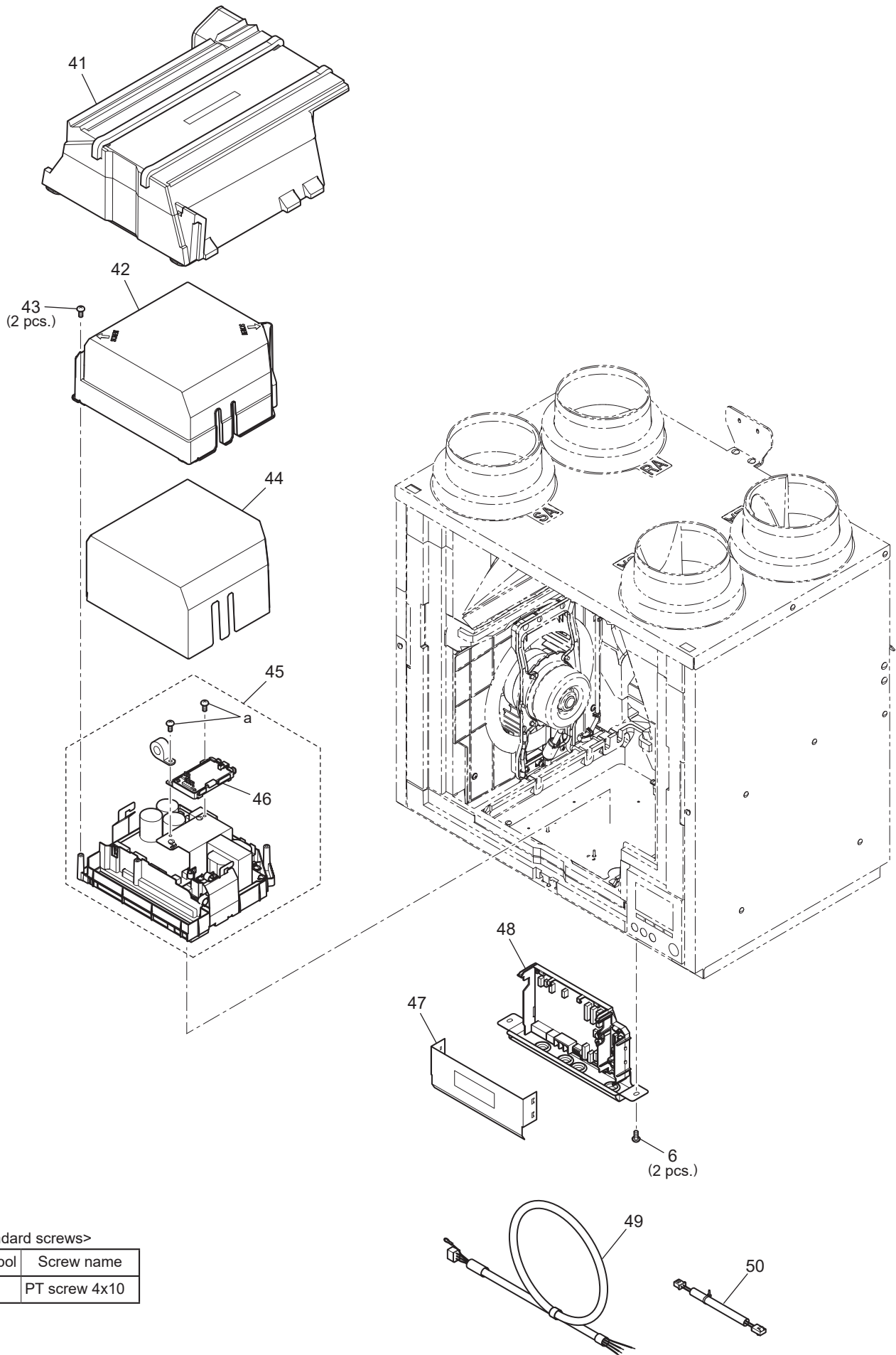
No.	Name of part	Parts No.	Q'ty pcs/unit	Critical for safety	Remarks
1	Filter cover (A)	W36 008 718	2		
2	Filter cover (B)	W36 008 717	1		
3	Filter case (RA)	W36 008 732	1		
4	Filter case (SA)	W36 008 733	1		
5	Filter case (OA)	W36 008 734	1		
6	Spl PT screw 4x10	W36 008 045	6		
7	Special washer (3)	W00 000 167	2		
8	Front casing (OUT)	W36 008 844	1		
9	Bush	W36 008 225	6		
10	Front casing (IN)	W36 008 845	1		
11	Controller	W36 008 722	1	⚠	
12	Heat exchanger	W36 008 711	1	⚠	
13	Wiring diagram	W36 008 358	1		
14	Drain cap	W36 008 309	1		
15	Wall bracket	W36 008 381	1		
16	Parts in bag	W36 008 588	1		





## VL-350CZPVU-R-E

No.	Name of part	Parts No.	Q'ty pcs/unit	Critical for safety	Remarks
21	Special nut (M8)	W36 008 067	2		
22	Spring washer (8)	W00 000 126	2		
23	Tab washer	W00 000 134	2		
24	Centrifugal fan	W36 008 481	2	⚠	Dia. 210mm
25	Washer (10)	W36 008 071	2		
26	DC motor assy (SA)	W36 008 730	1	⚠	With fan casing
27	Spacer	W36 008 095	8		6X15
28	Spl PTT screw 4x30	W36 008 047	8		
29	Element guide (RA)	W36 008 842	1		
30	Damper assembly	W36 008 731	1	⚠	
31	Damper frame	W36 008 716	1		
32	Thermistor	W36 008 172	1	⚠	RA
33	Element guide (OA)	W36 008 841	1		
34	DC motor assy (EA)	W36 008 729	1	⚠	With fan casing
35	Thermistor	W36 008 170	1	⚠	OA



<Standard screws>

Symbol	Screw name
a	PT screw 4x10

## VL-350CZPVU-R-E

No.	Name of part	Parts No.	Q'ty pcs/unit	Critical for safety	Remarks
41	PCB plate	W36 008 843	1		
42	PCB cover (UP)	W36 008 704	1		
43	Spl screw PTT 4x12	W00 000 046	2		SUS
44	PCB cover (LOW)	W36 008 705	1		
45	Control box	W36 008 238	1	⚠	X07DC-E2-P,VL-40P
46	Circuit board	W36 008 236	1	⚠	VL-40P
47	Insulating sheet	W36 008 226	1	⚠	
48	Circuit board	W36 008 239	1	⚠	X07DC-E2-C,VL-40S
49	Power supply cord	W36 008 220	1	⚠	1850mm
50	Lead wire	W36 008 232	1	⚠	Controller