

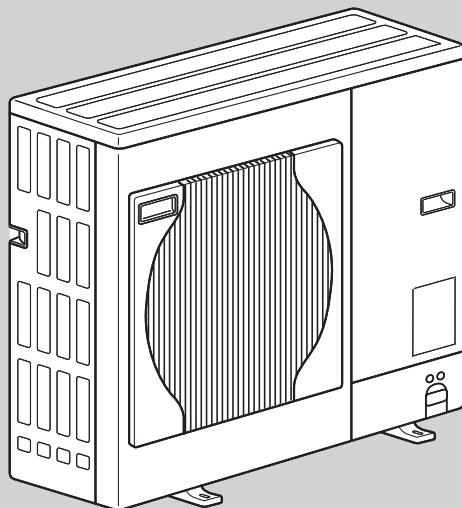
PARTS CATALOG R410A

Outdoor unit

| [Model Name] | [Service ref.] |
|----------------------|------------------------|
| PUHZ-SW75VHA | PUHZ-SW75VHAR6 |
| PUHZ-SW100VHA | PUHZ-SW100VHAR6 |
| PUHZ-SW120VHA | PUHZ-SW120VHAR6 |
| PUHZ-SW100YHA | PUHZ-SW100YHAR6 |
| PUHZ-SW120YHA | PUHZ-SW120YHAR6 |

 Revision:
 • Parts catalog has been updated in REVISED EDITION-A.

OCB755 is void.

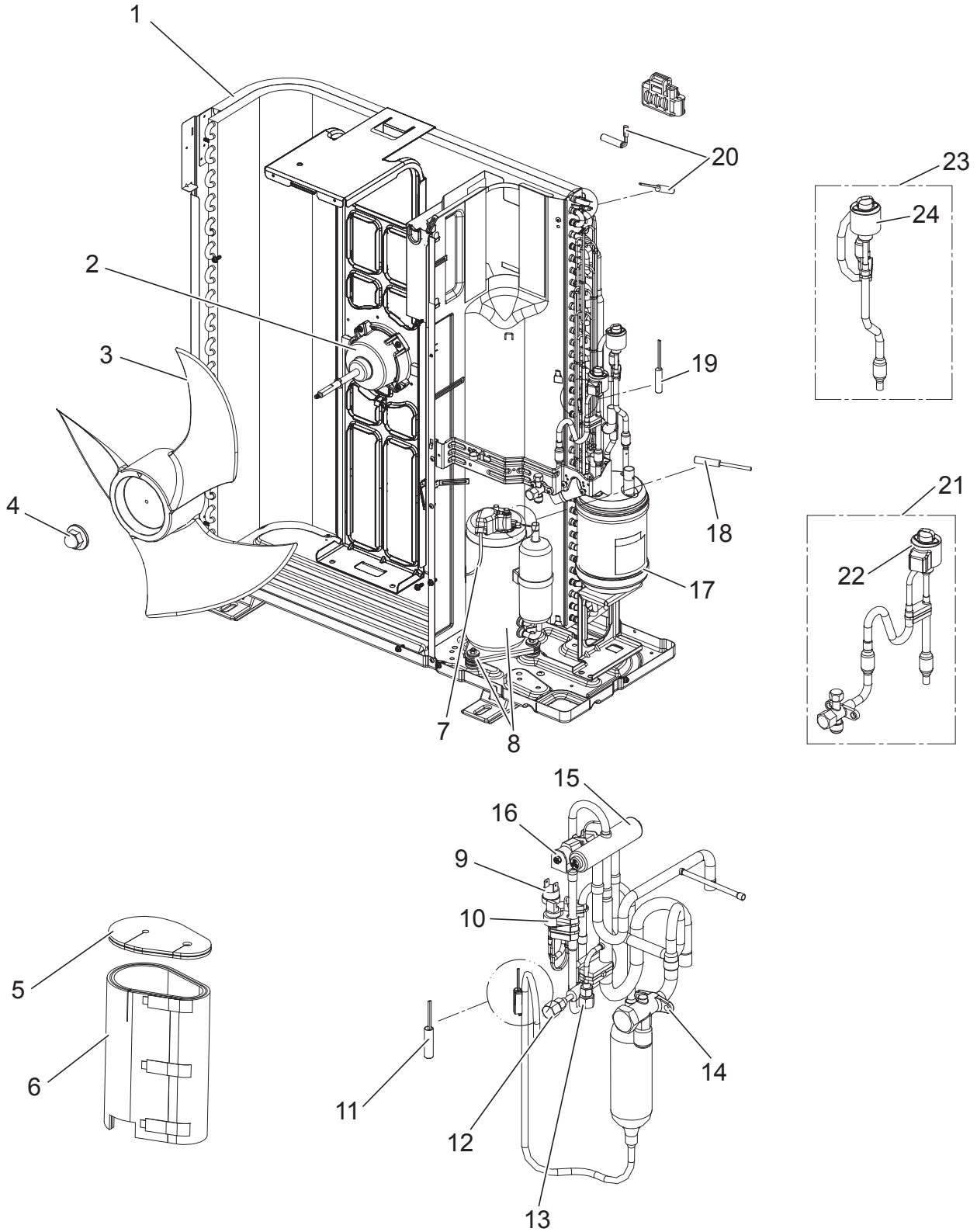

PUHZ-SW75VHAR6

CONTENTS

| | |
|----------------------------|---|
| 1. SERVICE PARTS LIST..... | 2 |
|----------------------------|---|

SERVICE MANUAL (OCH755)

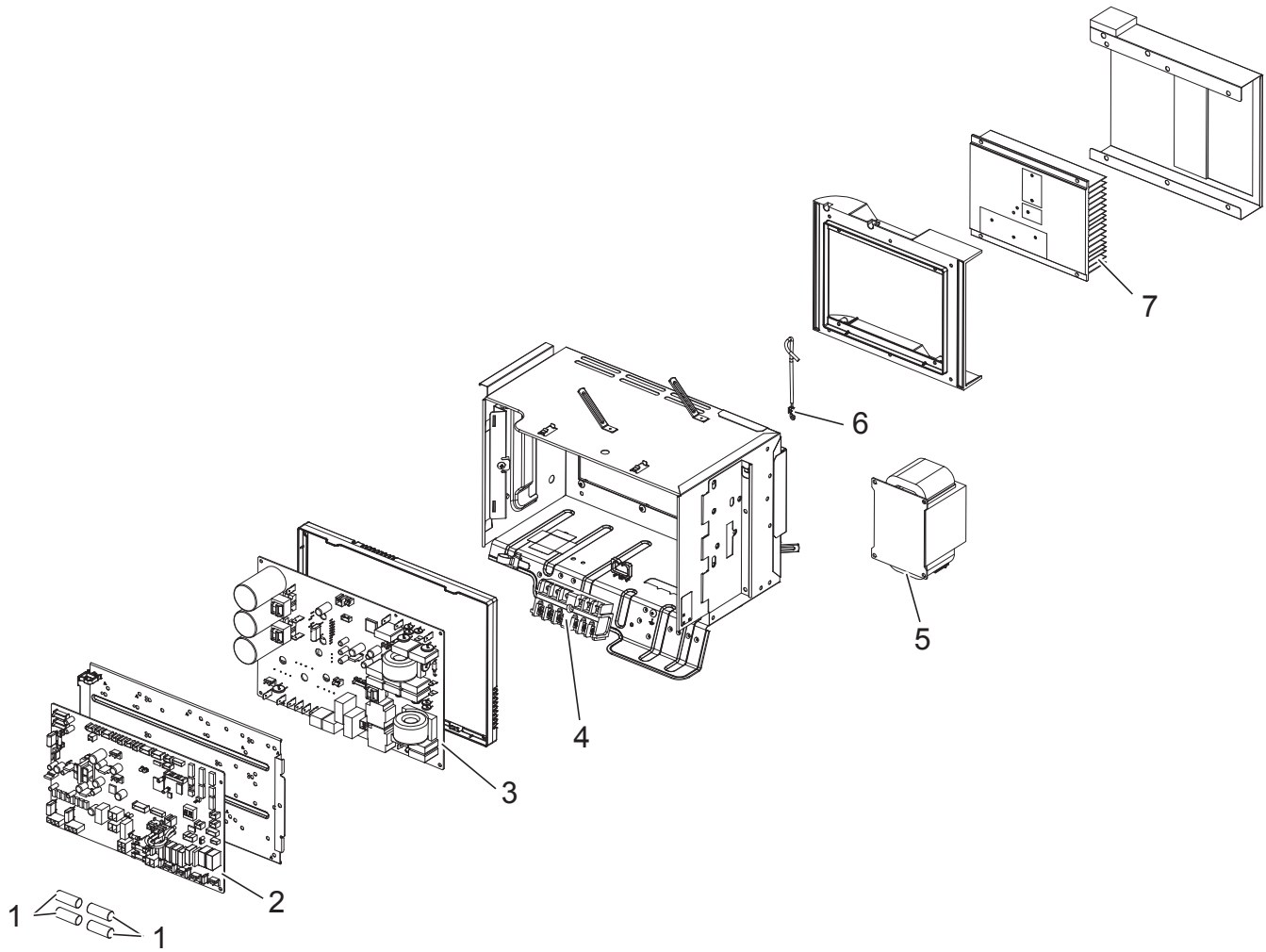
**FUNCTIONAL PARTS
PUHZ-SW75VHAR6**



1. The part quantity below indicates the required number of pieces per unit.
2. The circled No. indicates that the part is not shown in the figure.

| No. | Parts No. | Parts Name | PUHZ-SW75VHAR6 | Wiring Diagram Symbol | Remarks [Drawing No.] |
|-----|-------------|------------------------|----------------|-------------------------------------|---|
| 1 | T7W F03 408 | HEAT EXCHANGER | 1 | | |
| 2 | R01 F01 221 | FAN MOTOR | 1 | MF | |
| 3 | R01 E06 115 | PROPELLER FAN | 1 | | |
| 4 | R01 E16 097 | CAP NUT (MEC) M6 | 1 | | |
| 5 | T7W T13 602 | COMP FELT-T/SNB | 1 | | |
| 6 | T7W A09 602 | COMP FELT(BODY) | 1 | | |
| 7 | T7W C08 510 | LEAD ASSY COMP | 1 | | |
| 8 | T97 4S0 000 | COMPRESSOR | 1 | MC | SNB220FAGMC-L1 Includes RUBBER MOUNT |
| 9 | R01 H06 208 | HIGH PRESSURE SWITCH | 1 | 63H | |
| 10 | R01 H07 208 | HIGH PRESSURE SENSOR | 1 | 63HS | |
| 11 | R01 E41 201 | THERMISTOR (DIS) | 1 | TH4 (Discharge) | |
| 12 | R01 E18 413 | CHARGE PLUG/ ST | 1 | | Hi |
| 13 | R01 E31 413 | CHARGE PLUG/ LB90 | 1 | | Lo |
| 14 | T7W G00 411 | STOP VALVE & STRAINER | 1 | | 5/8 |
| 15 | R01 E28 403 | 4-WAY VALVE | 1 | 21S4 | |
| 16 | T7W E20 242 | SOLENOID COIL (21S4) | 1 | 21S4 | Includes SCREW |
| 17 | R01 H62 440 | POWER RECEIVER | 1 | | |
| 18 | R01 H90 202 | THERMISTOR | 1 | TH34 (COMP. Surface) | |
| 19 | R01 N01 202 | THERMISTOR-H | 1 | TH3 (Liquid) | |
| 20 | R01 H01 202 | THERMISTOR W | 1 | TH6 (2-Phase Pipe) TH7 (Ambient) | Combined Port |
| 21 | T7W B15 401 | LEV ASSY-B/REC-V | 1 | LEV-B | |
| 22 | R01 HR8 242 | COIL (LEV)/ XAP-5P RED | 1 | LEV-B | |
| 23 | T7W A15 401 | LEV ASSY-A/C-REC | 1 | LEV-A | |
| 24 | R01 HR9 242 | COIL (LEV)/ XAP-5P WH | 1 | LEV-A | |

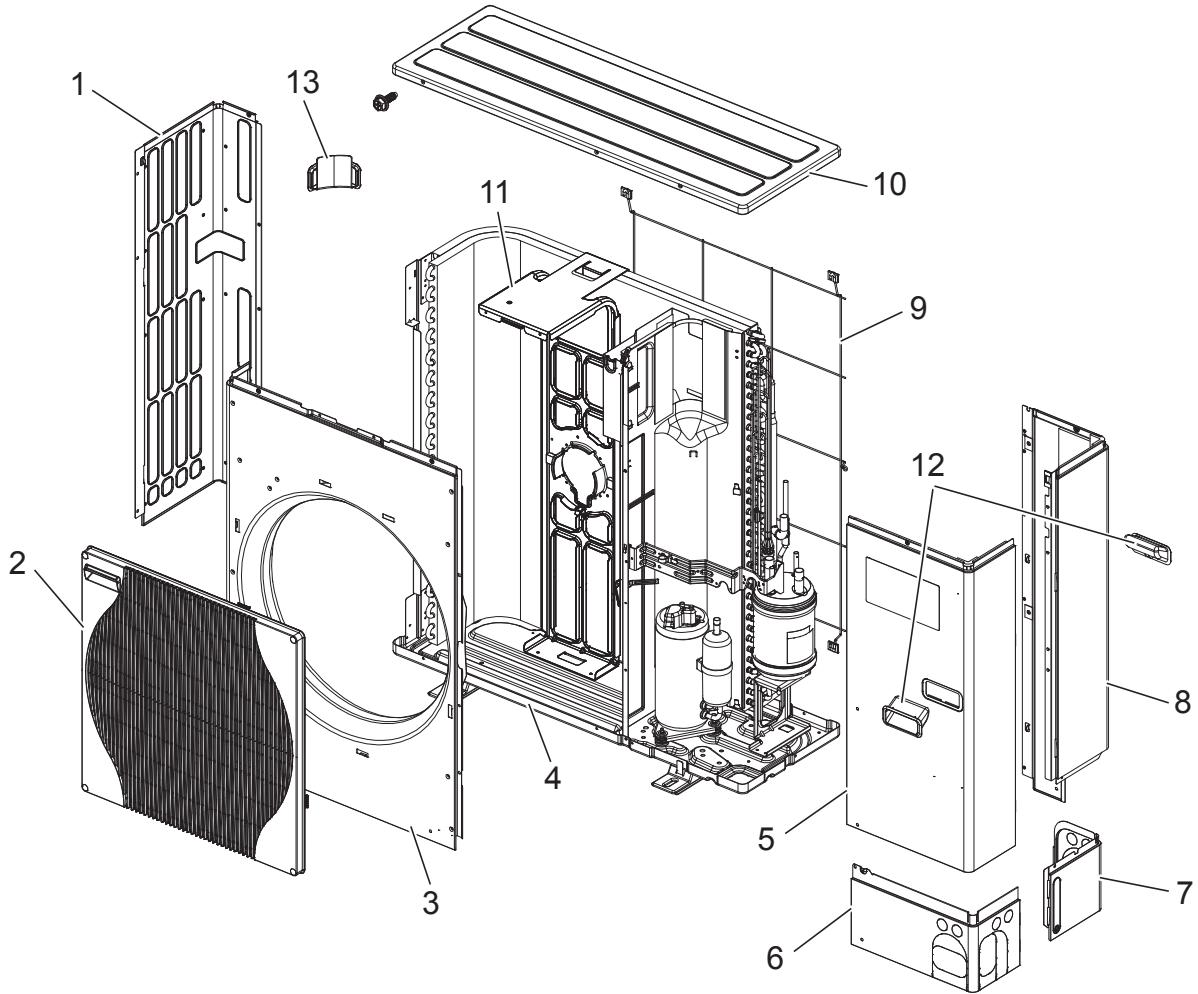
ELECTRICAL PARTS



1. The part quantity below indicates the required number of pieces per unit.
 2. The circled No. indicates that the part is not shown in the figure.

| No. | Parts No. | Parts Name | PUHZ-SW75VHAR6 | Wiring Diagram Symbol | Remarks [Drawing No.] |
|-----|-------------|--------------------|----------------|-----------------------|-----------------------|
| 1 | R01 E14 239 | FUSE 6.3 A 250 V | 4 | F1, 2, 3, 4 | |
| 2 | T7W S28 315 | CONTROLLER BOARD | 1 | C.B. | |
| 3 | T7W S15 323 | POWER BOARD | 1 | P.B. | |
| 4 | T7W E71 716 | T.B./ LNE.S1.S2.S3 | 1 | TB1 | |
| 5 | T7W E35 259 | REACTOR | 1 | ACL | |
| 6 | R01 N16 202 | THERMISTOR (HS) | 1 | TH8 (Heat sink) | |
| 7 | R01 A19 371 | HEAT SINK | 1 | | Includes SCREWS |

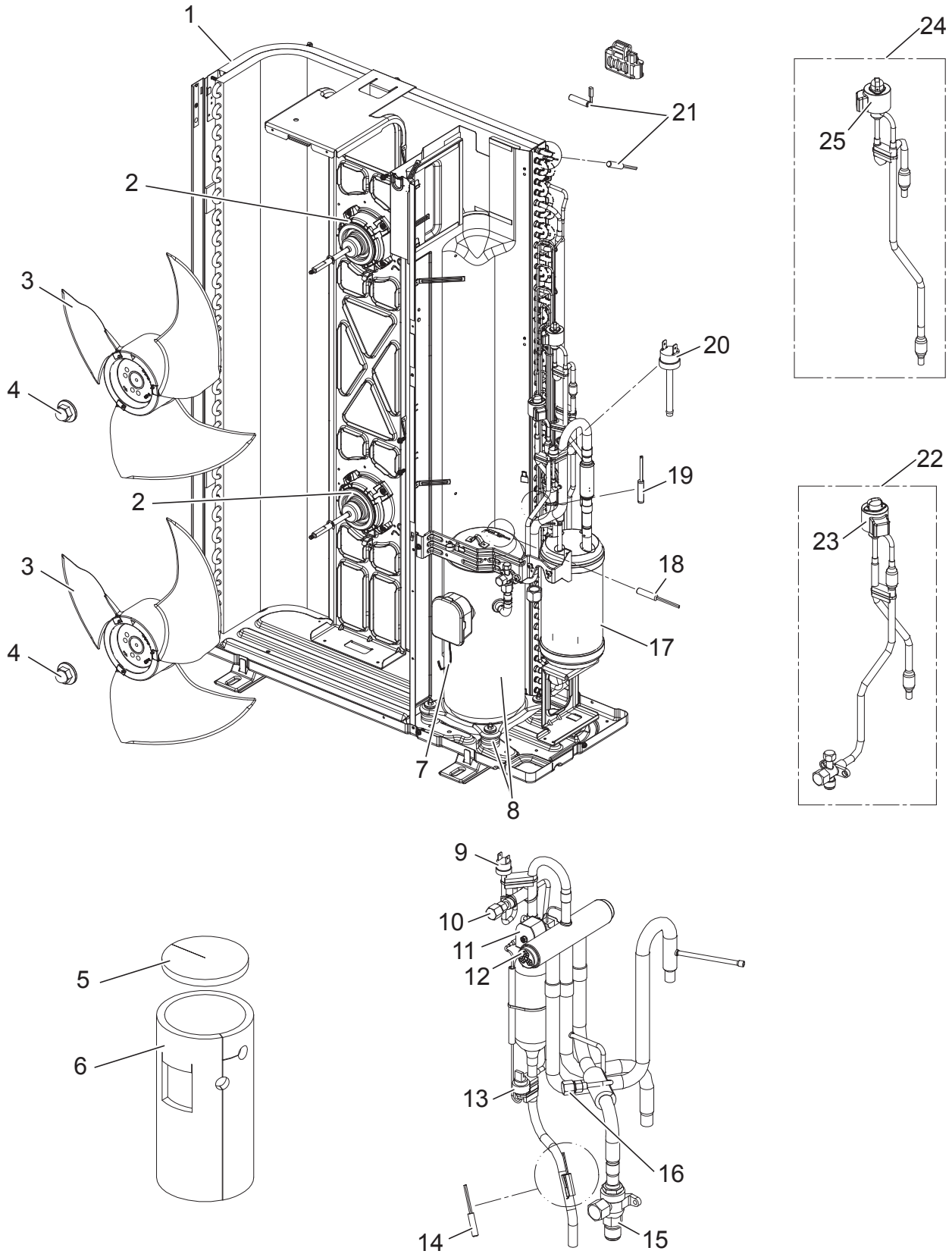
STRUCTURAL PARTS



| No. | Parts No. | Parts Name | PUHZ-SW75VHAR6 | Wiring Diagram Symbol | Remarks [Drawing No.] |
|-----|-------------|---------------------|----------------|-----------------------|-----------------------|
| 1 | R01 E19 662 | SIDE PANEL (L) | 1 | | |
| 2 | R01 E33 691 | GRILLE | 1 | | |
| 3 | R01 E15 668 | FRONT PANEL | 1 | | |
| 4 | R01 E56 686 | BASE ASSY | 1 | | |
| 5 | T7W E18 668 | SERVICE PANEL | 1 | | |
| 6 | R01 E13 658 | COVER PANEL (FRONT) | 1 | | |
| 7 | R01 E24 658 | COVER PANEL (REAR) | 1 | | |
| 8 | T7W E44 661 | SIDE PANEL (R) | 1 | | |
| 9 | R01 E06 698 | REAR GUARD | 1 | | |
| 10 | R01 E27 641 | TOP PANEL | 1 | | |
| 11 | T7W E21 130 | MOTOR SUPPORT | 1 | | |
| 12 | R01 E01 655 | HANDLE | 2 | | |
| 13 | R01 E02 655 | HANDLE | 1 | | |

FUNCTIONAL PARTS
PUHZ-SW100VHAR6
PUHZ-SW100YHAR6

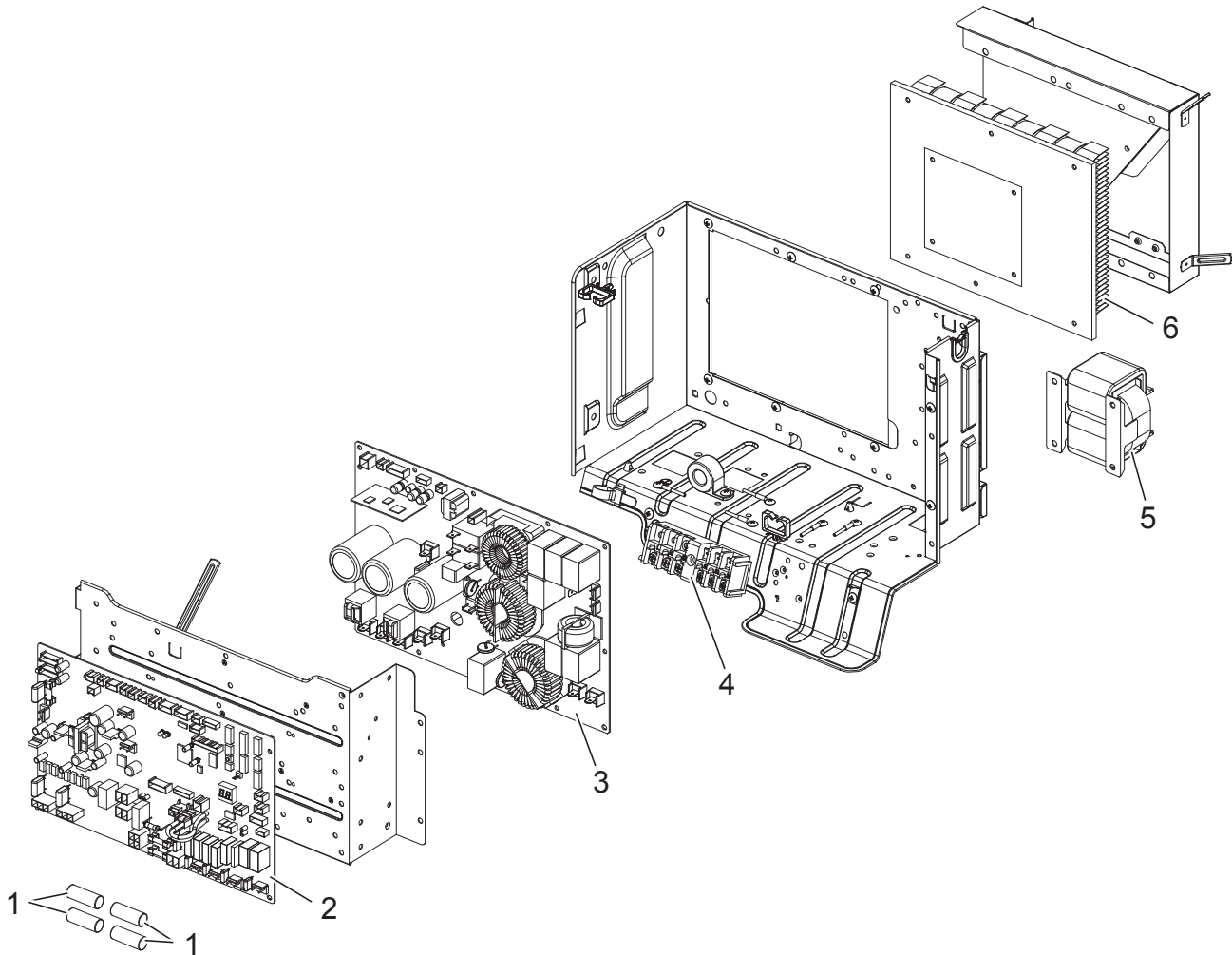
PUHZ-SW120VHAR6
PUHZ-SW120YHAR6



1. The part quantity below indicates the required number of pieces per unit.
2. The circled No. indicates that the part is not shown in the figure.

| No. | Parts No. | Parts Name | PUHZ-SW100VHAR6 | PUHZ-SW120VHAR6 | PUHZ-SW100YHAR6 | PUHZ-SW120YHAR6 | Wiring Diagram Symbol | Remarks [Drawing No.] |
|-----|-------------|------------------------|-----------------|-----------------|-----------------|-----------------|-------------------------------------|-------------------------------------|
| 1 | T7W F04 408 | HEAT EXCHANGER | 1 | 1 | 1 | 1 | | |
| 2 | R01 E88 221 | FAN MOTOR | 2 | 2 | 2 | 2 | MF1, 2 | |
| 3 | R01 E06 115 | PROPELLER FAN | 2 | 2 | 2 | 2 | | |
| 4 | R01 E16 097 | CAP NUT (MEC) M6 | 2 | 2 | 2 | 2 | | |
| 5 | R01 A57 602 | COMP FELT (TOP) | 1 | 1 | 1 | 1 | | |
| 6 | T7W A16 602 | COMP FELT (BODY) | 1 | 1 | 1 | 1 | | |
| 7 | T7W C09 510 | LEAD ASSY COMP | 1 | 1 | | | | |
| 7 | T7W C10 510 | LEAD ASSY COMP | | | 1 | 1 | | |
| 8 | T97 4A0 001 | COMPRESSOR | 1 | | | | MC | ANB33FNEMT Includes RUBBER MOUNT |
| 8 | T97 4A0 002 | COMPRESSOR | | 1 | | | MC | ANB42FNEMT Includes RUBBER MOUNT |
| 8 | T97 4A0 003 | COMPRESSOR | | | 1 | | MC | ANB33FNEMT Includes RUBBER MOUNT |
| 8 | T97 4A0 004 | COMPRESSOR | | | | 1 | MC | ANB42FNEMT Includes RUBBER MOUNT |
| 9 | R01 H06 208 | HIGH PRESSURE SWITCH | 1 | 1 | 1 | 1 | 63H | |
| 10 | R01 E18 413 | CHARGE PLUG/ ST | 1 | 1 | 1 | 1 | | Hi |
| 11 | T7W S02 242 | SOLENOID COIL (21S4) | 1 | 1 | | | 21S4 | Includes SCREW |
| 11 | T7W E20 242 | SOLENOID COIL (21S4) | | | 1 | 1 | 21S4 | Includes SCREW |
| 12 | R01 E34 403 | 4-WAY VALVE | 1 | 1 | 1 | 1 | 21S4 | |
| 13 | R01 H07 208 | HIGH PRESSURE SENSOR | 1 | 1 | 1 | 1 | 63HS | |
| 14 | R01 E35 201 | THERMISTOR (DIS) | 1 | 1 | | | TH4 (Discharge) | |
| 14 | R01 E41 201 | THERMISTOR (DIS) | | | 1 | 1 | TH4 (Discharge) | |
| 15 | R01 E12 410 | BALL VALVE 5/8F | 1 | 1 | 1 | 1 | | 5/8, Includes STRAINER |
| 16 | R01 E31 413 | CHARGE PLUG/ LB90 | 1 | 1 | 1 | 1 | | Lo |
| 17 | R01 E60 440 | POWER RECEIVER | 1 | 1 | 1 | 1 | | |
| 18 | R01 H90 202 | THERMISTOR | 1 | 1 | 1 | 1 | TH34 (COMP. Surface) | |
| 19 | R01 E67 202 | THERMISTOR | 1 | 1 | 1 | 1 | TH3 (Liquid) | |
| 20 | R01 H00 209 | LOW PRESSURE SWITCH | 1 | 1 | 1 | 1 | 63L | |
| 21 | R01 E94 202 | THERMISTOR W | 1 | 1 | | | TH6 (2-Phase Pipe) TH7 (Ambient) | Combined Port |
| 21 | R01 H01 202 | THERMISTOR W | | | 1 | 1 | TH6 (2-Phase Pipe) TH7 (Ambient) | Combined Port |
| 22 | T7W B16 401 | LEV ASSY-B/REC-V | 1 | 1 | 1 | 1 | LEV-B | |
| 23 | R01 HR8 242 | COIL (LEV)/ XAP-5P RED | 1 | 1 | 1 | 1 | LEV-B | |
| 24 | T7W A16 401 | LEV ASSY-A/C-REC | 1 | 1 | 1 | 1 | LEV-A | |
| 25 | R01 HR9 242 | COIL (LEV)/ XAP-5P WH | 1 | 1 | 1 | 1 | LEV-A | |

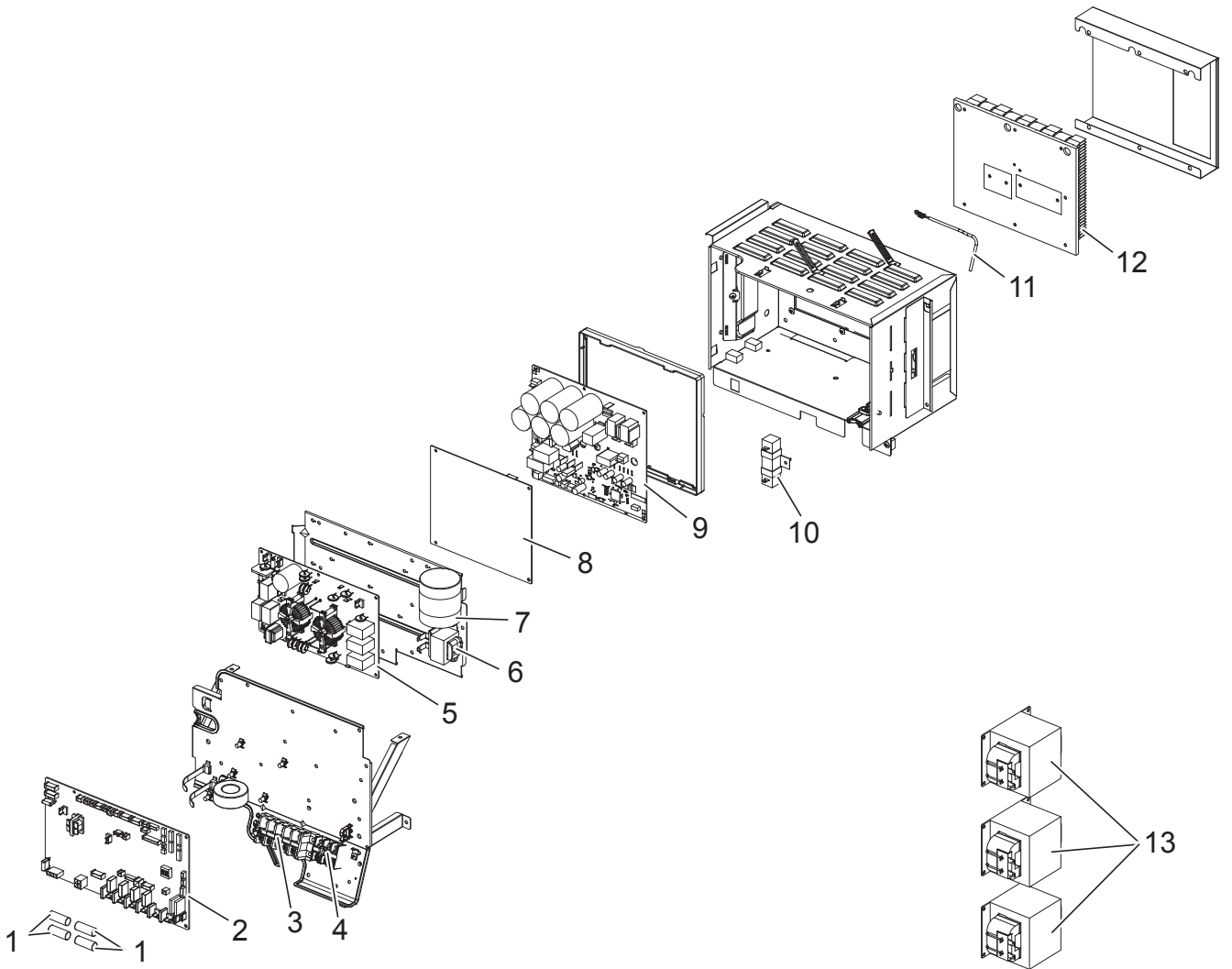
ELECTRICAL PARTS



1. The part quantity below indicates the required number of pieces per unit.
 2. The circled No. indicates that the part is not shown in the figure.

| No. | Parts No. | Parts Name | PUHZ-SW100VHAR6 | PUHZ-SW120VHAR6 | Wiring Diagram Symbol | Remarks [Drawing No.] |
|-----|-------------|--------------------|-----------------|-----------------|-----------------------|-----------------------|
| | | | | | | |
| 1 | R01 E14 239 | FUSE 6.3 A 250 V | 4 | 4 | F1,2,3,4 | |
| 2 | T7W S29 315 | CONTROLLER BOARD | 1 | 1 | C.B. | |
| 3 | T7W S16 323 | POWER BOARD | 1 | 1 | P.B. | |
| 4 | T7W E71 716 | T.B./ LNE.S1.S2.S3 | 1 | 1 | TB1 | |
| 5 | T7W E24 259 | REACTOR | 1 | 1 | DCL | |
| 6 | R01 A10 371 | HEAT SINK | 1 | 1 | | Includes SCREWS |

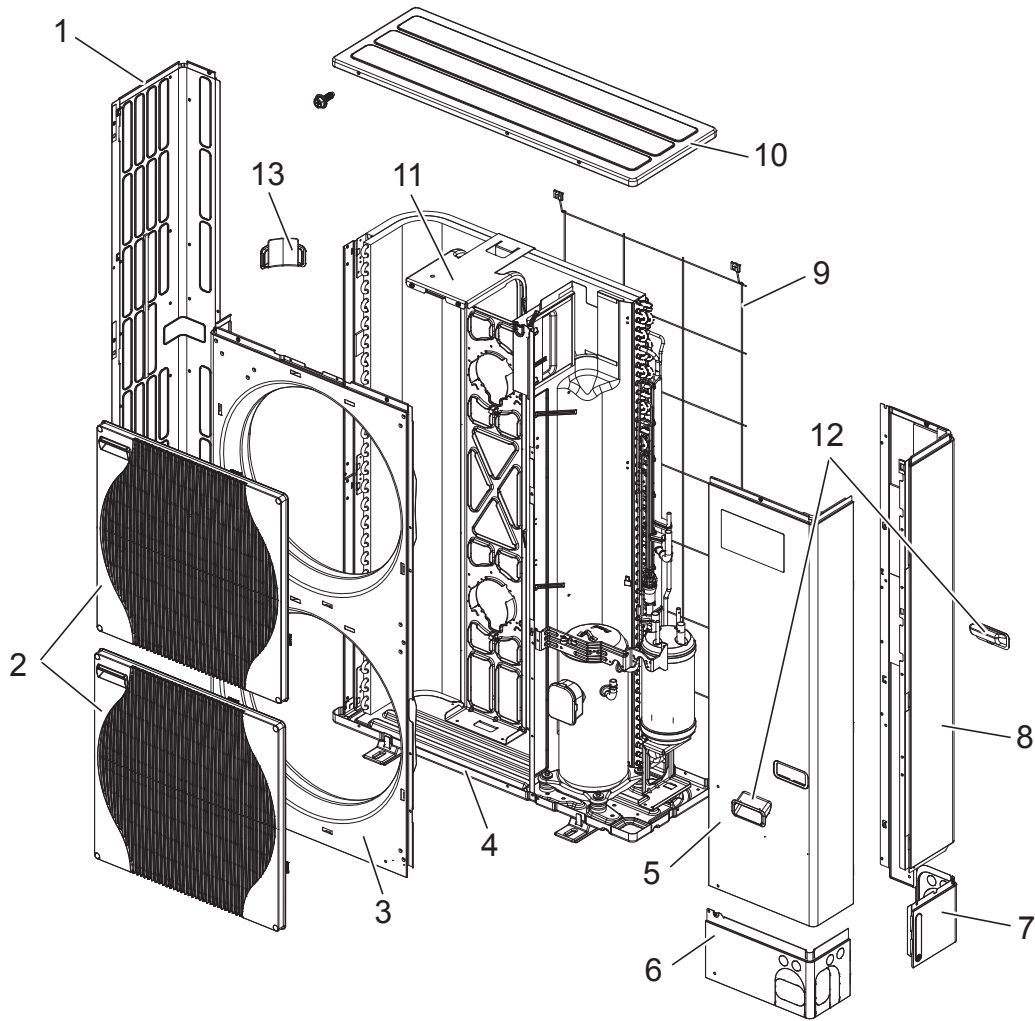
ELECTRICAL PARTS



1. The part quantity below indicates the required number of pieces per unit.
2. The circled No. indicates that the part is not shown in the figure.

| No. | Parts No. | Parts Name | | | Wiring Diagram Symbol | Remarks [Drawing No.] |
|-----|-------------|--------------------|-----------------|-----------------|-----------------------|-----------------------|
| | | | PUHZ-SW100YHAR6 | PUHZ-SW120YHAR6 | | |
| 1 | R01 E14 239 | FUSE 6.3 A 250 V | 4 | 4 | F1,2,3,4 | |
| 2 | T7W S29 315 | CONTROLLER BOARD | 1 | 1 | C.B. | |
| 3 | T7W E30 716 | T.B./ L1.L2.L3.N.E | 1 | 1 | TB1 | |
| 4 | R01 E19 246 | T.B./ S1.S2.S3 | 1 | 1 | TB2 | |
| 5 | T7W E33 346 | NOISE FILTER | 1 | 1 | N.F. | |
| 6 | R01 E31 259 | REACTOR | 1 | 1 | ACL4 | |
| 7 | T7W E10 254 | CAPACITOR | 1 | 1 | CK | |
| 8 | T7W F29 310 | CONVERTER BOARD | 1 | 1 | | |
| 9 | T7W S17 323 | POWER BOARD | 1 | 1 | P.B. | |
| 10 | R01 E10 233 | RESISTOR | 1 | 1 | RS | |
| 11 | R01 H93 202 | THERMISTOR (HS) | 1 | 1 | TH8 (Heat sink) | |
| 12 | T7W A05 371 | HEAT SINK | 1 | 1 | | Includes SCREWS |
| 13 | T7W E12 259 | REACTOR | 3 | 3 | ACL1,2,3 | |

STRUCTURAL PARTS



1. The part quantity below indicates the required number of pieces per unit.
 2. The circled No. indicates that the part is not shown in the figure.

| No. | Parts No. | Parts Name | | | | | Wiring Diagram Symbol | Remarks [Drawing No.] |
|-----|----------------|---------------------|-----------------|-----------------|-----------------|-----------------|-----------------------|-----------------------|
| | | | PUHZ-SW100VHAR6 | PUHZ-SW120VHAR6 | PUHZ-SW100YHAR6 | PUHZ-SW120YHAR6 | | |
| 1 | R 01 E 33 6 62 | SIDE PANEL (L) | 1 | 1 | 1 | 1 | | |
| 2 | R 01 E 33 6 91 | GRILLE | 2 | 2 | 2 | 2 | | |
| 3 | R 01 E 16 6 68 | FRONT PANEL | 1 | 1 | 1 | 1 | | |
| 4 | R 01 E 26 6 86 | BASE ASSY | 1 | 1 | 1 | 1 | | |
| 5 | T 7W E 26 6 67 | SERVICE PANEL | 1 | 1 | 1 | 1 | | |
| 6 | R 01 E 26 6 58 | COVER PANEL (FRONT) | 1 | 1 | 1 | 1 | | |
| 7 | R 01 E 24 6 58 | COVER PANEL (REAR) | 1 | 1 | 1 | 1 | | |
| 8 | T 7W E 45 6 61 | SIDE PANEL (R) | 1 | 1 | 1 | 1 | | |
| 9 | R 01 E 07 6 98 | REAR GUARD | 1 | 1 | 1 | 1 | | |
| 10 | R 01 E 27 6 41 | TOP PANEL | 1 | 1 | 1 | 1 | | |
| 11 | R 01 E 62 1 30 | MOTOR SUPPORT | 1 | 1 | 1 | 1 | | |
| 12 | R 01 E 01 6 55 | HANDLE | 2 | 2 | 2 | 2 | | |
| 13 | R 01 E 02 6 55 | HANDLE | 1 | 1 | 1 | 1 | | |



MITSUBISHI ELECTRIC CORPORATION

HEAD OFFICE: TOKYO BUILDING, 2-7-3, MARUNOUCHI, CHIYODA-KU, TOKYO 100-8310, JAPAN
