

PARTS CATALOG R410A

<Outdoor unit>

[Model Name]

PUMY-P250YBM

PUMY-P300YBM

PUMY-P250YBM-ER

PUMY-P300YBM-ER

PUMY-P250YBM-ET

PUMY-P300YBM-ET

Salt proof model

PUMY-P250YBM-BS

PUMY-P300YBM-BS

PUMY-P250YBM-ERBS

PUMY-P300YBM-ERBS

PUMY-P250YBM-ETBS

PUMY-P300YBM-ETBS

Service Ref.

PUMY-P250YBM.TH

PUMY-P300YBM.TH

PUMY-P250YBM-ER.TH

PUMY-P300YBM-ER.TH

PUMY-P250YBM-ET.TH

PUMY-P300YBM-ET.TH

PUMY-P250YBM-BS.TH

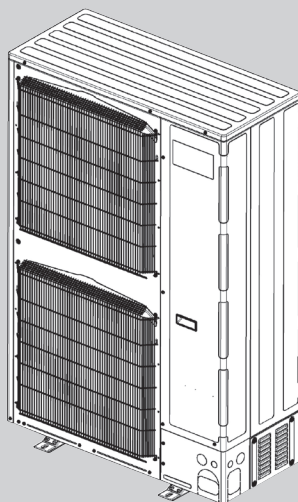
PUMY-P300YBM-BS.TH

PUMY-P250YBM-ERBS.TH

PUMY-P300YBM-ERBS.TH

PUMY-P250YBM-ETBS.TH

PUMY-P300YBM-ETBS.TH



OUTDOOR UNIT

CONTENTS

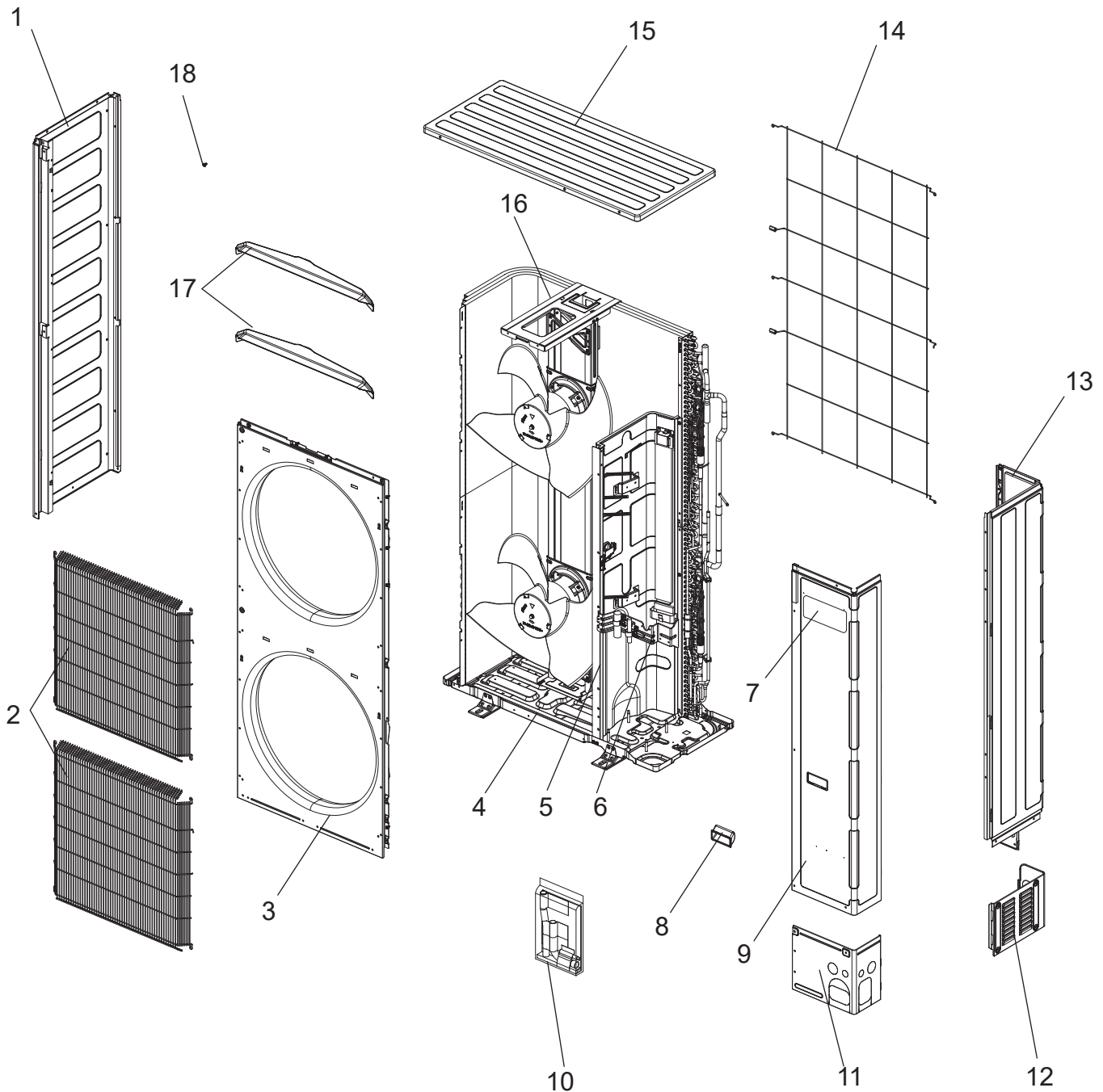
1. SERVICE PARTS LIST 2

SERVICE MANUAL (OCH760)

1-1. OUTDOOR UNIT STRUCTURAL PARTS

PUMY-P250YBM.TH
 PUMY-P250YBM-ER.TH
 PUMY-P250YBM-ET.TH
 PUMY-P250YBM-BS.TH
 PUMY-P250YBM-ERBS.TH
 PUMY-P250YBM-ETBS.TH

PUMY-P300YBM.TH
 PUMY-P300YBM-ER.TH
 PUMY-P300YBM-ET.TH
 PUMY-P300YBM-BS.TH
 PUMY-P300YBM-ERBS.TH
 PUMY-P300YBM-ETBS.TH

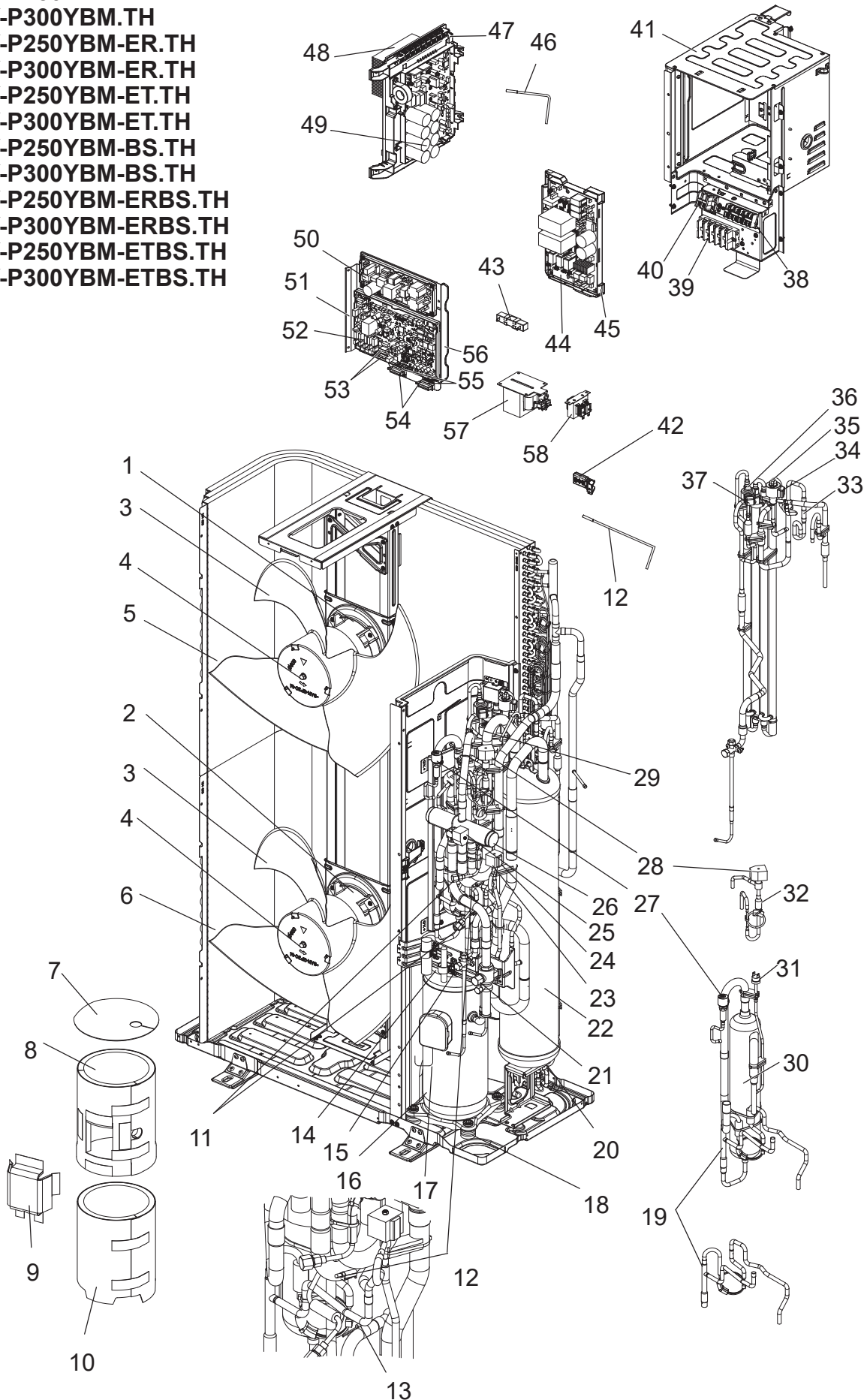


1. The part quantity below indicates the required number of pieces per unit.
2. The circled No. indicates that the part is not shown in the figure.

No.	Parts No.	Parts Name													Remarks [Drawing No.]
			PUMY-P250YBM.TH	PUMY-P250YBM-ER.TH	PUMY-P250YBM-ET.TH	PUMY-P250YBM-BS.TH	PUMY-P250YBM-ERBS.TH	PUMY-P250YBM-ETBS.TH	PUMY-P300YBM.TH	PUMY-P300YBM-ER.TH	PUMY-P300YBM-ET.TH	PUMY-P300YBM-BS.TH	PUMY-P300YBM-ERBS.TH	PUMY-P300YBM-ETBS.TH	
1	E 27 41E 086	SIDE PANEL (L)	1	1	1	1	1	1	1	1	1	1	1	1	
2	E 27 W53 521	WIRE GRILLE	2	2	2	2	2	2	2	2	2	2	2	2	
3	E 27 41E 232	FRONT PANEL	1	1	1	1	1	1	1	1	1	1	1	1	
4	E 27 37E 290	BASE	1	1	1	1	1	1	1	1	1	1	1	1	
5	E 27 41E 293	SEPARATOR	1	1	1	1	1	1	1	1	1	1	1	1	
6	—	VALVE BED	1	1	1	1	1	1	1	1	1	1	1	1	[RK00J349G03]
7	—	BRAND LABEL	1	1	1	1	1	1	1	1	1	1	1	1	[BT79G823H01]
8	E 22 819 009	HANDLE	1	1	1	1	1	1	1	1	1	1	1	1	
9	E 27 41E 245	SERVICE PANEL	1	1	1	1	1	1	1	1	1	1	1	1	
10	E 27 W54 890	ACCESSORY PIPES								1		1	1	1	
10	E 27 37E 890	ACCESSORY PIPES									1			1	
11	E 27 41E 006	COVER PANEL (FRONT)	1	1	1	1	1	1	1	1	1	1	1	1	
12	E 27 42E 006	COVER PANEL (REAR)	1	1	1	1	1	1	1	1	1	1	1	1	
13	E 27 41E 085	SIDE PANEL (R)	1	1	1	1	1	1	1	1	1	1	1	1	
14	E 27 W53 523	REAR GUARD	1	1	1	1	1	1	1	1	1	1	1	1	
15	E 27 41E 297	TOP PANEL	1	1	1	1	1	1	1	1	1	1	1	1	
16	E 27 41E 515	MOTOR SUPPORT	1	1	1	1	1	1	1	1	1	1	1	1	
17	E 27 W53 531	ICE GUARD	2	2	2	2	2	2	2	2	2	2	2	2	
18	E 27 942 250	F.ST SCREW	88	88	88	88	88	88	88	88	88	88	88	88	

1-2. OUTDOOR UNIT FUNCTIONAL AND ELECTRICAL PARTS

PUMY-P250YBM.TH
PUMY-P300YBM.TH
PUMY-P250YBM-ER.TH
PUMY-P300YBM-ER.TH
PUMY-P250YBM-ET.TH
PUMY-P300YBM-ET.TH
PUMY-P250YBM-BS.TH
PUMY-P300YBM-BS.TH
PUMY-P250YBM-ERBS.TH
PUMY-P300YBM-ERBS.TH
PUMY-P250YBM-ETBS.TH
PUMY-P300YBM-ETBS.TH



1. The part quantity below indicates the required number of pieces per unit.
2. The circled No. indicates that the part is not shown in the figure.

No.	Parts No.	Parts Name													Wiring Diagram Symbol	Remarks [Drawing No.]
			PUMY-P250YBM.TH	PUMY-P250YBM-ER.TH	PUMY-P250YBM-ET.TH	PUMY-P250YBM-BS.TH	PUMY-P250YBM-ERBS.TH	PUMY-P250YBM-ETBS.TH	PUMY-P300YBM.TH	PUMY-P300YBM-ER.TH	PUMY-P300YBM-ET.TH	PUMY-P300YBM-BS.TH	PUMY-P300YBM-ERBS.TH	PUMY-P300YBM-ETBS.TH		
1	E27 W53 301	OUTDOOR FAN MOTOR	1	1	1	1	1	1	1	1	1	1	1	1	MF1	WH, upper side
2	E27 W54 301	OUTDOOR FAN MOTOR	1	1	1	1	1	1	1	1	1	1	1	1	MF2	BU, bottom side
3	E27 W53 501	PROPELLER FAN	2	2	2	2	2	2	2	2	2	2	2	2		
4	E27 W53 508	PROPELLER FAN NUT	2	2	2	2	2	2	2	2	2	2	2	2		
5	E27 36A 630	OUTDOOR HEAT EXCHANGER (TOP)	1	1	1	1	1	1	1	1	1	1	1	1		
6	E27 37A 630	OUTDOOR HEAT EXCHANGER (UNDER)	1	1	1	1	1	1	1	1	1	1	1	1		
7	—	COMP FELT (TOP)	1	1	1	1	1	1	1	1	1	1	1	1		[RK33R570H01]
8	—	COMP FELT (BODY-UPPER)	1	1	1	1	1	1	1	1	1	1	1	1		[RK33J771H02]
9	—	COMP FELT (TERMINAL)	1	1	1	1	1	1	1	1	1	1	1	1		[RK33J599H02]
10	—	COMP FELT (BODY-BOTTOM)	1	1	1	1	1	1	1	1	1	1	1	1		[RK33J772H01]
11	E27 942 641	CHARGE PLUG	2	2	2	2	2	2	2	2	2	2	2	2		
12	E27 W53 307	THERMISTOR W	1	1	1	1	1	1	1	1	1	1	1	1	TH6, TH7	
13	E27 W50 307	THERMISTOR	1	1	1	1	1	1	1	1	1	1	1	1	TH2	
14	E27 W52 307	THERMISTOR SHELL	1	1	1	1	1	1	1	1	1	1	1	1	TH4	
15	E27 981 662	STOP VALVE 3/8F	1	1	1	1	1	1	1	1	1	1	1	1		For liquid
16	E27 W53 900	COMPRESSOR ANB78FSCMT	1	1	1	1	1	1	1	1	1	1	1	1	MC	
17	—	LEAD ASSY COMP	1	1	1	1	1	1	1	1	1	1	1	1		[RG78F280G04]
18	E22 267 506	COMPRESSOR RUBBER SET	4	4	4	4	4	4	4	4	4	4	4	4		4PCS/ SET
19	E27 W53 936	CAPILLARY TUBE ASSY	1	1	1	1	1	1	1	1	1	1	1	1		CT (ø2.4 x ø0.8 x 600) brazed assy
20	E27 W51 307	THERMISTOR	1	1	1	1	1	1	1	1	1	1	1	1	TH3	
21	E27 W53 661	BALL VALVE 7/8F	1	1	1	1	1	1	1	1	1	1	1	1		For gas
22	E27 37E 932	ACCUMULATOR	1	1	1	1	1	1	1	1	1	1	1	1		
23	E27 W54 492	SOLENOID VALVE	1	1	1	1	1	1	1	1	1	1	1	1	(SV3)	
24	E27 W54 490	SOLENOID COIL	1	1	1	1	1	1	1	1	1	1	1	1	SV3	BK
25	E27 37E 490	SOLENOID COIL	1	1	1	1	1	1	1	1	1	1	1	1	21S4	GN
26	E27 35E 961	4-WAY VALVE	1	1	1	1	1	1	1	1	1	1	1	1	(21S4)	
27	E27 M17 646	HIGH PRESSURE SENSOR	1	1	1	1	1	1	1	1	1	1	1	1	63HS	
28	E27 W53 490	SOLENOID COIL	1	1	1	1	1	1	1	1	1	1	1	1	SV1	GY
29	E27 W53 647	LOW PRESSURE SENSOR	1	1	1	1	1	1	1	1	1	1	1	1	63LS	
30	E27 W53 299	OIL SEPARATOR	1	1	1	1	1	1	1	1	1	1	1	1		
31	E27 942 646	HIGH PRESSURE SWITCH	1	1	1	1	1	1	1	1	1	1	1	1	63H	
32	E27 W53 492	SOLENOID VALVE	1	1	1	1	1	1	1	1	1	1	1	1	(SV1)	SV1&CT(ø4.0 x ø3.0 x 220) brazed assy
33	E27 W53 642	RESTRICTOR VALVE	1	1	1	1	1	1	1	1	1	1	1	1		
34	E27 W53 493	LINEAR EXPANSION VALVE COIL	1	1	1	1	1	1	1	1	1	1	1	1	LEV-A	WH
35	E27 W53 640	EXPANSION VALVE	1	1	1	1	1	1	1	1	1	1	1	1	(LEV-A)	
36	E22 02J 640	EXPANSION VALVE	1	1	1	1	1	1	1	1	1	1	1	1	(LEV-B)	
37	E27 W54 493	LINEAR EXPANSION VALVE COIL	1	1	1	1	1	1	1	1	1	1	1	1	LEV-B	RD
38	E27 W54 374	TERMINAL BLOCK	2	2	2	2	2	2	2	2	2	2	2	2	TB3, TB7	
39	E27 W52 374	TERMINAL BLOCK	1	1	1	1	1	1	1	1	1	1	1	1	TB1	
40	E27 W53 374	TERMINAL BLOCK	1	1	1	1	1	1	1	1	1	1	1	1	TB1B	
41	—	ELECTRICAL PARTS BOX	1	1	1	1	1	1	1	1	1	1	1	1		[RK00J657G06]
42	E27 W53 079	SENSOR HOLDER	1	1	1	1	1	1	1	1	1	1	1	1		For TH7 (Ambient)
43	E27 W53 360	RESISTOR	1	1	1	1	1	1	1	1	1	1	1	1	RS	
44	E27 W53 444	NOISE FILTER P.C.BOARD	1	1	1	1	1	1	1	1	1	1	1	1	N.F.	
45	—	BOARD CASE NF	1	1	1	1	1	1	1	1	1	1	1	1		[RK25A634G04]
46	E27 W54 307	THERMISTOR HS	1	1	1	1	1	1	1	1	1	1	1	1	TH8	
47	—	BOARD CASE POWER	1	1	1	1	1	1	1	1	1	1	1	1		[RK00N133G01]
48	—	HEAT SINK	1	1	1	1	1	1	1	1	1	1	1	1		[RK11B721H02]
49	E27 W53 440	POWER BOARD	1	1	1	1	1	1	1	1	1	1	1	1	P.B.	
50	E27 37E 456	M-NET POWER CIRCUIT BOARD	1	1	1	1	1	1	1	1	1	1	1	1	M-NET P.B.	
51	—	BOARD CASE M-NET	1	1	1	1	1	1	1	1	1	1	1	1		[RK25J178G04]
52	E27 37E 450	OUTDOOR CONTROL P.C. BOARD	1	1	1	1	1	1	1	1	1	1	1	1	MULTI B.	
53	E27 648 382	FUSE 250V 6.3A	2	2	2	2	2	2	2	2	2	2	2	2	F1, F2	T6.3AL250V
54	E22 735 382	FUSE	2	2	2	2	2	2	2	2	2	2	2	2	FUSE1, FUSE2	
55	E22 735 241	FUSE HOLDER	2	2	2	2	2	2	2	2	2	2	2	2		
56	—	BOARD CASE CONT	1	1	1	1	1	1	1	1	1	1	1	1		[RK25A635G03]
57	E27 W53 337	REACTOR	1	1	1	1	1	1	1	1	1	1	1	1	DCL	
58	E27 W54 337	REACTOR	1	1	1	1	1	1	1	1	1	1	1	1	DCL2	

mitsubishi electric corporation

HEAD OFFICE: TOKYO BUILDING, 2-7-3, MARUNOUCHI, CHIYODA-KU, TOKYO 100-8310, JAPAN
