

## Plasma Quad Connect

No. OBH901

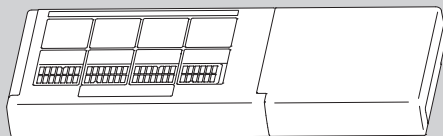
# SERVICE MANUAL

---

### Models

**MAC-100FT-E**

**MAC-110FT-E**



**MAC-100FT-E**

---

### CONTENTS

---

- 1. Connectable indoor units ..... 2
- 2. Precautions on failure diagnosis ..... 3
- 3. System Construction ..... 4
- 4. Procedure of failure diagnosis ..... 5

**PARTS CATALOG (OBB901)**

This Service Handbook includes only the contents about the Plasma Quad Connect. For indoor units or other interfaces connected to this product, refer to the service handbook of each device.

## 1 Connectable indoor units

### ■ MAC-100FT-E

Connectable indoor units are the MSZ series, PKA series, PKFY series, PEFY series, PEAD series and SEZ series with CN105, the connector for the optional parts for remote control.

See specifications of each indoor unit to find out if CN105 is installed or not.

### ■ MAC-110FT-E

Connectable indoor units are the PEFY series, MEXZ series, PEAZ series and PEAD series with CN105, the connector for the optional parts for remote control.

See specifications of each indoor unit to find out if CN105 is installed or not.





#### Note:






Some indoor units cannot be attached to the Plasma Quad Connect.



Ask your dealer about the details of the target models.

## [Precautions for setting up, or use of the Plasma Quad Connect]

## ■ Meanings of symbols used in this manual

 Be sure not to do.	 Never splash water on the unit.
 Never touch with wet hand.	 Be sure to follow the instruction.

 <b>Warning</b>			
(Improper handling may have serious consequences, including serious injury or death.)			
	<ul style="list-style-type: none"> <li>■ <b>Do not disassemble, modify, or repair by yourself (user).</b> It can cause electric shock, fire, or injury.</li> </ul>		<ul style="list-style-type: none"> <li>■ <b>Do not touch the Plasma Quad Connect with wet hands.</b> It can cause damage to the device, electric shock, or fire.</li> </ul>
	<ul style="list-style-type: none"> <li>■ <b>This appliance is not intended for use by persons (including children) with reduced physical, sensory or mental capabilities, or lack of experience and knowledge, unless they have been given supervision or instruction concerning use of the appliance by a person responsible for their safety.</b></li> </ul>		<ul style="list-style-type: none"> <li>■ <b>Do not splash water on the Plasma Quad Connect or use it in a bathroom.</b> It can cause damage to the device, electric shock, or fire.</li> </ul>
	<ul style="list-style-type: none"> <li>■ <b>Children should be supervised to ensure that they do not play with the appliances.</b></li> </ul>		<ul style="list-style-type: none"> <li>■ <b>Do not install the Plasma Quad Connect by yourself (user).</b> Improper installation may result in fire, electric shock, or injury due to fall of the Plasma Quad Connect. Consult the dealer from whom you purchased the Plasma Quad Connect or professional installer.</li> </ul>
	<ul style="list-style-type: none"> <li>■ <b>This appliance can be used by children aged from 8 years and above and persons with reduced physical, sensory or mental capabilities or lack of experience and knowledge if they have been given supervision or instruction concerning use of the appliance in a safe way and understand the hazards involved.</b></li> </ul>		<ul style="list-style-type: none"> <li>■ <b>When the Plasma Quad Connect is dropped, or the holder or cable is damaged, disconnect the power supply or turn the breaker OFF.</b> It may cause fire or electric shock. In this case, consult your dealer.</li> </ul>
	<ul style="list-style-type: none"> <li>■ <b>Children shall not play with the appliance. Cleaning and user maintenance shall not be made by children without supervision.</b></li> </ul>		<ul style="list-style-type: none"> <li>■ <b>In case of an abnormal condition (such as a burning smell), stop the indoor unit and disconnect the power supply or turn the breaker OFF.</b> A continued operation in the abnormal state may cause a malfunction, fire, or electric shock. In this case, consult your dealer.</li> </ul>
	<ul style="list-style-type: none"> <li>■ <b>Do not install the Plasma Quad Connect nearby the automatic control devices such as automatic doors or fire alarms.</b> It can cause accidents due to malfunctions.</li> </ul>		

 <b>Caution</b>	
(Improper handling may have consequences, including injury or damage to building.)	
	<ul style="list-style-type: none"> <li>■ <b>Do not mount the Plasma Quad Connect where children can reach.</b> It can cause injury.</li> </ul>
	<ul style="list-style-type: none"> <li>■ <b>Do not step on unstable stepstool to set up or clean the Plasma Quad Connect.</b> It may cause injury if you fall down.</li> </ul>

**Instructions for use**■ **Do not use or keep the product in the following environment**

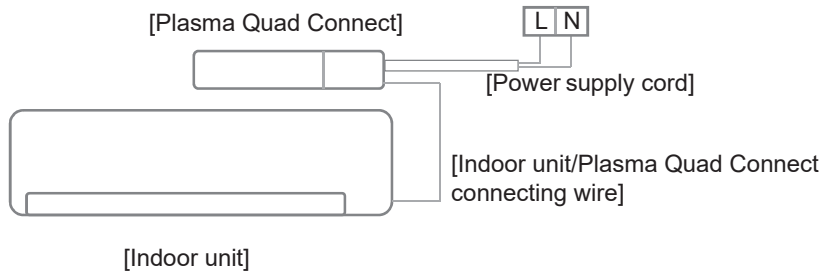
Where the product is exposed to direct sunlight

- Area with poor ventilation
- Where rain and fog enters
- Extremely high/low temperature area
- Dusty area

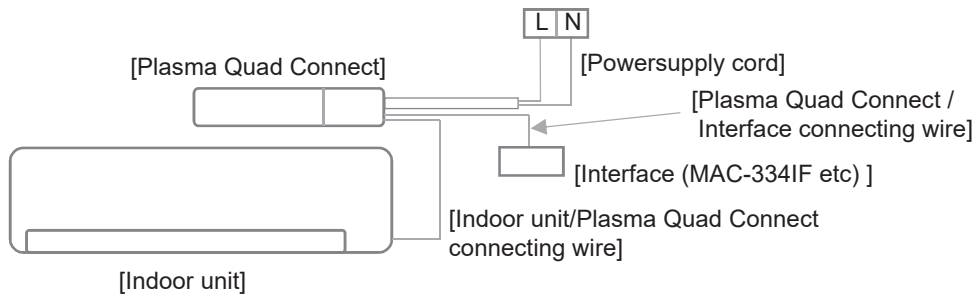
# 3

## System Construction

### ■ When only the Plasma Quad Connect is connected to an indoor unit



### ■ When the Plasma Quad Connect and other interfaces are connected to an indoor unit



When we connect Plasma Quad Connect and Interface, we switch the DIP\_SW after wiring.

# 4

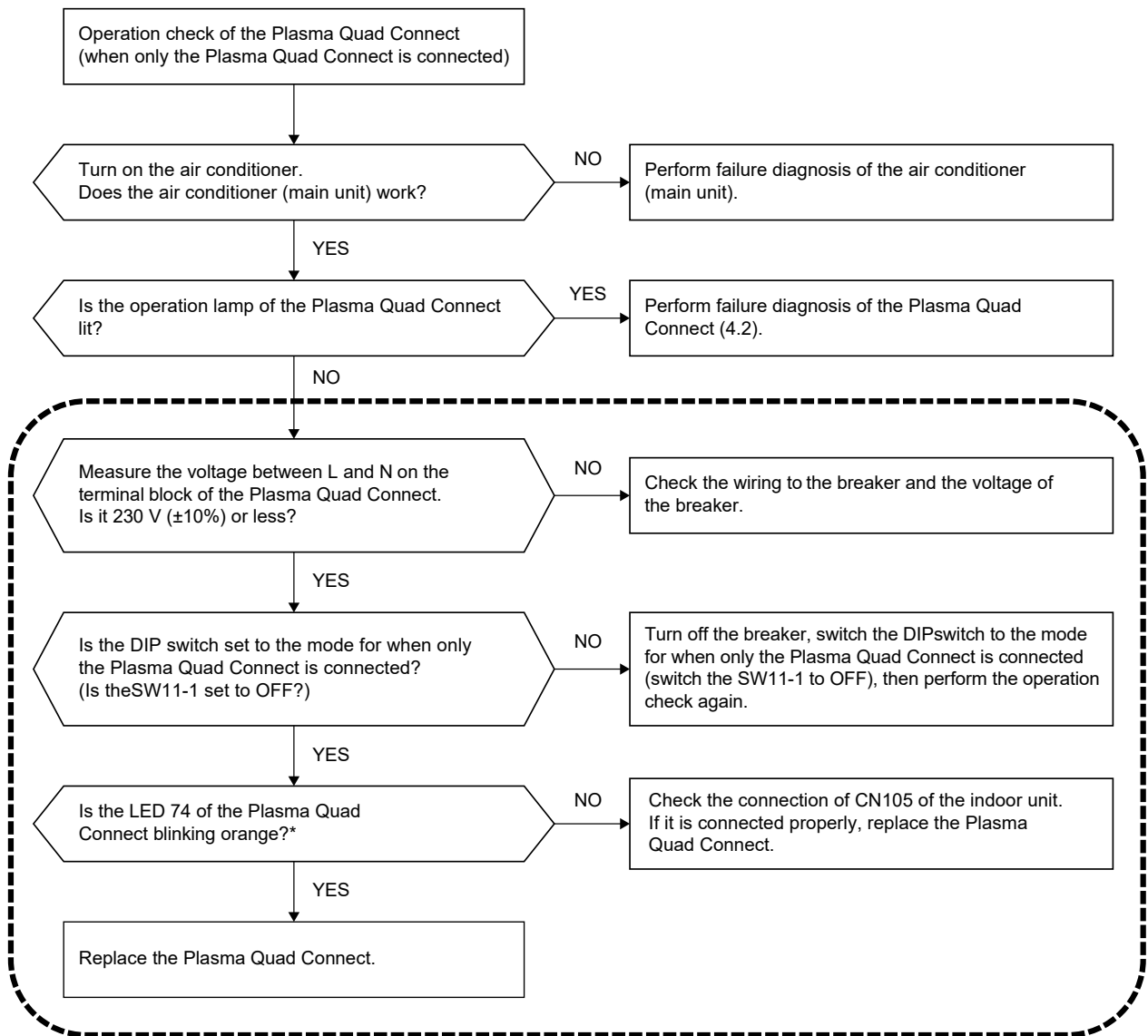
## Procedure of failure diagnosis

Check the following items when the Plasma Quad Connect or the other connected interface does not work properly.

### 4.1 Checking method when the Plasma Quad Connect does not work properly

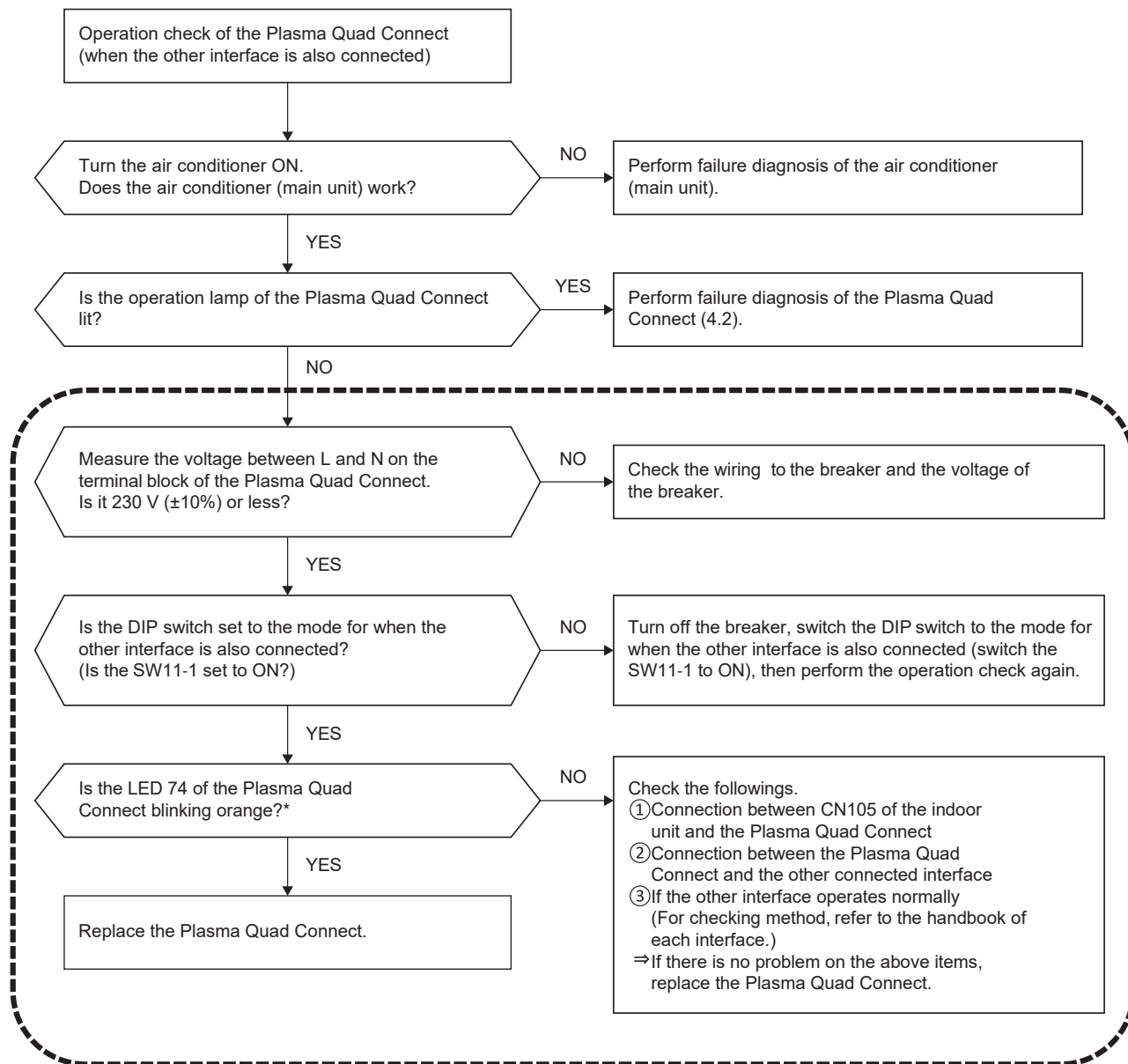
Perform operation check of the Plasma Quad Connect according to the following flow chart.

#### 4.1.1 When only the Plasma Quad Connect is connected



\* It will take up to about 3 minutes before the LED starts blinking orange after turning on the breaker.

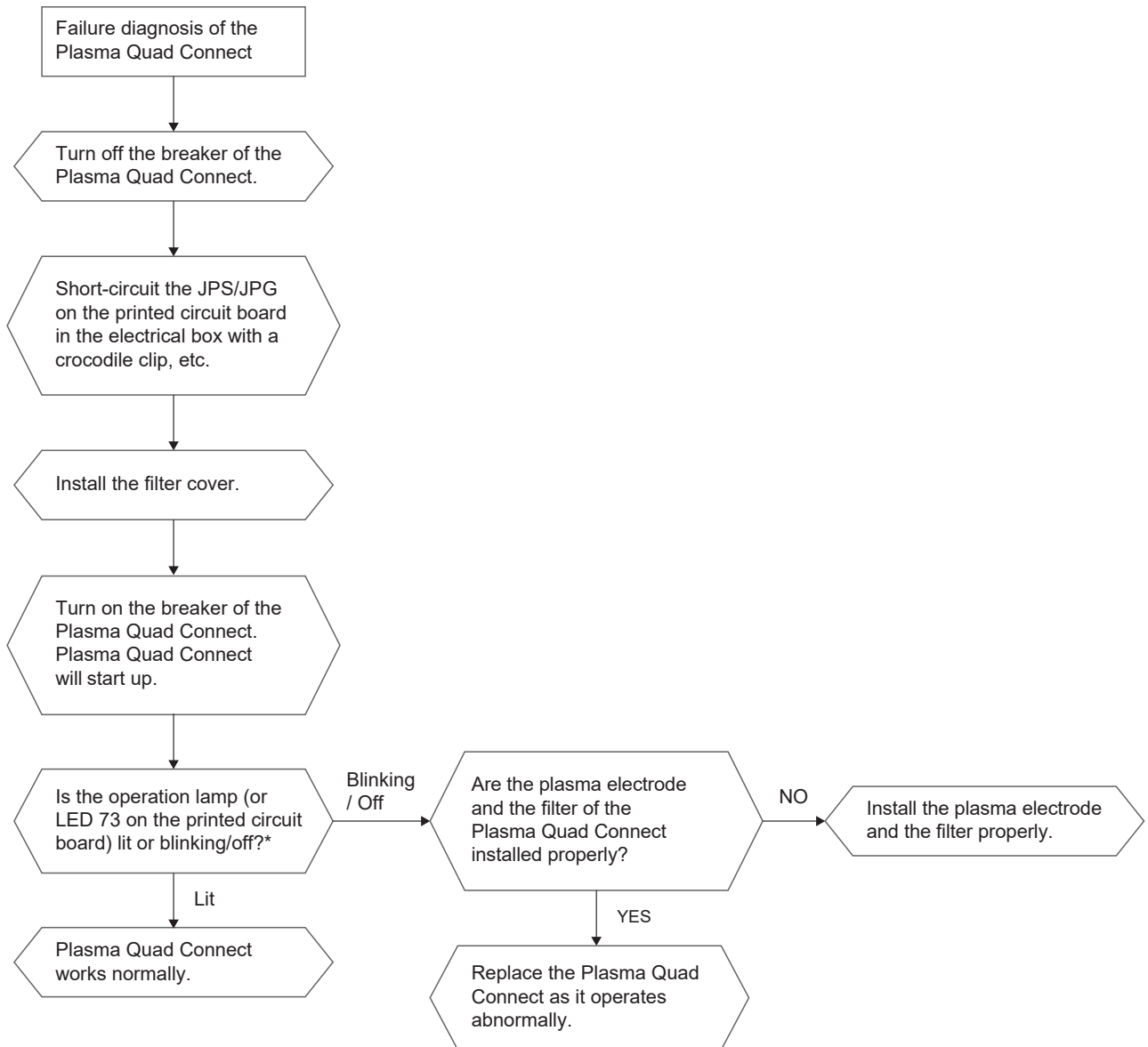
## 4.1.2 When the other interface is also connected



\* It will take up to about 3 minutes before the LED starts blinking orange after turning on the breaker.

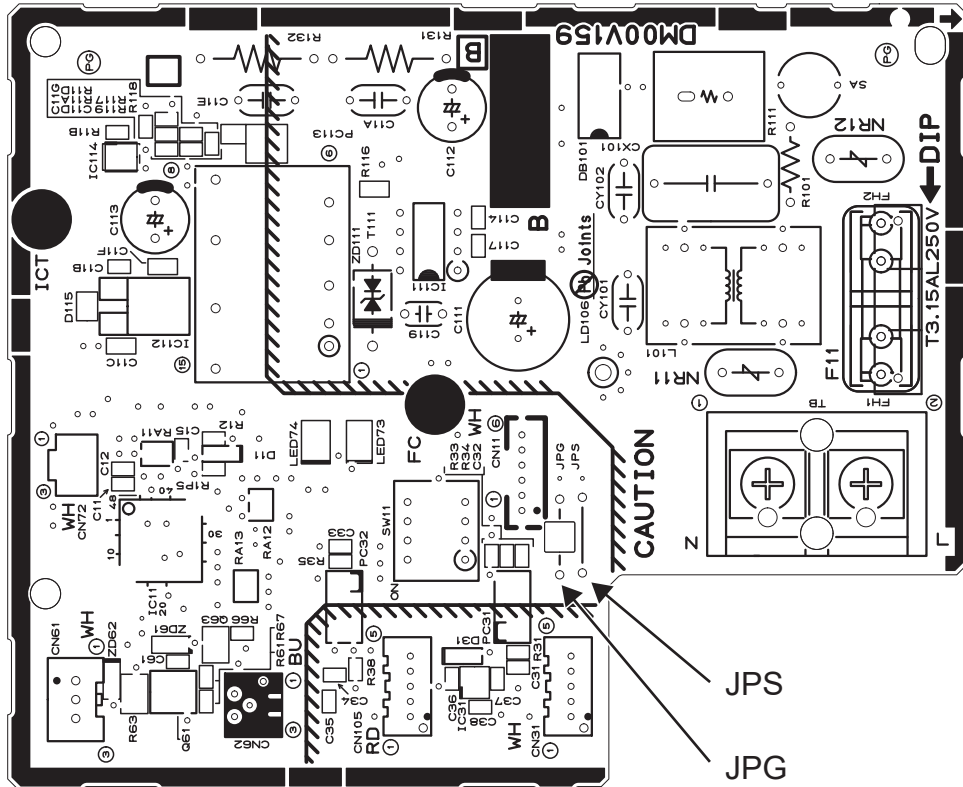
## 4.2 Failure diagnosis method of the Plasma Quad Connect

Perform failure diagnosis of the Plasma Quad Connect according to the following procedure.



\* It will take up to about 5 seconds before the operation lamp (or LED73 on the printed circuit board) starts lit after turning on the breaker.

Short-circuit the jumper wire on the printed circuit board with a crocodile clip, then turn on the power.



The LED on the printed circuit board indicates the state of the Plasma Quad Connect. The lighting pattern of each LED is shown in the table below.

#### LED71 / LED73 (White)

LED status	PQC status
Lit	PQC ON
Off	PQC OFF
Blink	Abnormal

The LED71 is placed on the display printed circuit board.  
The LED71 and LED73 indicate PQC status in the same lighting pattern.

#### LED74 (Orange)

LED status	PQC status
Blink	Normal communication
Off	Abnormal communication

## MITSUBISHI ELECTRIC CORPORATION

HEAD OFFICE: TOKYO BUILDING, 2-7-3, MARUNOUCHI, CHIYODA-KU, TOKYO 100-8310, JAPAN