

PARTS CATALOG

<Outdoor unit>
[Model Name]
[Service Ref.]

PUMY-P112VKM4	PUMY-P112VKM4	PUMY-P112VKM4R1	
PUMY-P125VKM4	PUMY-P125VKM4	PUMY-P125VKM4R1	
PUMY-P140VKM4	PUMY-P140VKM4	PUMY-P140VKM4R1	
PUMY-P112YKM4	PUMY-P112YKM4	PUMY-P112YKM4R1	
	PUMY-P112YKM4R2	PUMY-P112YKM4-ETR2	PUMY-P112YKM4-ERR2
PUMY-P125YKM4	PUMY-P125YKM4	PUMY-P125YKM4R1	
	PUMY-P125YKM4R2	PUMY-P125YKM4-ETR2	PUMY-P125YKM4-ERR2
PUMY-P140YKM4	PUMY-P140YKM4	PUMY-P140YKM4R1	
	PUMY-P140YKM4R2	PUMY-P140YKM4-ETR2	PUMY-P140YKM4-ERR2
PUMY-P112YKME4	PUMY-P112YKME4	PUMY-P112YKME4R1	PUMY-P112YKME4R2
PUMY-P125YKME4	PUMY-P125YKME4	PUMY-P125YKME4R1	PUMY-P125YKME4R2
PUMY-P140YKME4	PUMY-P140YKME4	PUMY-P140YKME4R1	PUMY-P140YKME4R2

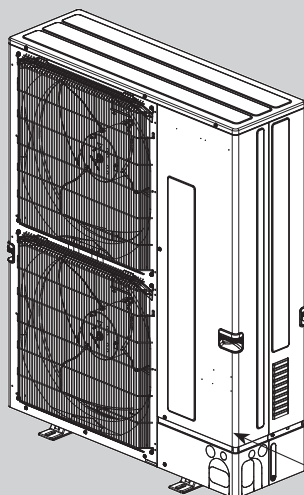
Revision:

- PUMY-P112YKM4(-BS)R2, PUMY-P125YKM4(-BS)R2, PUMY-P140YKM4(-BS)R2, PUMY-P112YKM4-ET(BS)R2, PUMY-P125YKM4-ET(BS)R2, PUMY-P140YKM4-ET(BS)R2, PUMY-P112YKM4-ER(BS)R2, PUMY-P125YKM4-ER(BS)R2, PUMY-P140YKM4-ER(BS)R2, PUMY-P112YKME4(-BS)R2, PUMY-P125YKME4(-BS)R2 and PUMY-P140YKME4(-BS)R2 have been added in REVISED EDITION-D.
- Some descriptions have been modified.

OCB673 REVISED EDITION-C is void.

Salt proof model

PUMY-P112VKM4-BS	PUMY-P112VKM4-BS	PUMY-P112VKM4R1-BS	
PUMY-P125VKM4-BS	PUMY-P125VKM4-BS	PUMY-P125VKM4R1-BS	
PUMY-P140VKM4-BS	PUMY-P140VKM4-BS	PUMY-P140VKM4R1-BS	
PUMY-P112YKM4-BS	PUMY-P112YKM4-BS	PUMY-P112YKM4R1-BS	
	PUMY-P112YKM4-BSR2	PUMY-P112YKM4-ETBSR2	PUMY-P112YKM4-ERBSR2
PUMY-P125YKM4-BS	PUMY-P125YKM4-BS	PUMY-P125YKM4R1-BS	
	PUMY-P125YKM4-BSR2	PUMY-P125YKM4-ETBSR2	PUMY-P125YKM4-ERBSR2
PUMY-P140YKM4-BS	PUMY-P140YKM4-BS	PUMY-P140YKM4R1-BS	
	PUMY-P140YKM4-BSR2	PUMY-P140YKM4-ETBSR2	PUMY-P140YKM4-ERBSR2
PUMY-P112YKME4-BS	PUMY-P112YKME4-BS	PUMY-P112YKME4R1-BS	PUMY-P112YKME4-BSR2
PUMY-P125YKME4-BS	PUMY-P125YKME4-BS	PUMY-P125YKME4R1-BS	PUMY-P125YKME4-BSR2
PUMY-P140YKME4-BS	PUMY-P140YKME4-BS	PUMY-P140YKME4R1-BS	PUMY-P140YKME4-BSR2


 Model name
 indication

OUTDOOR UNIT

CONTENTS

1. SERVICE PARTS LIST.....	2
2. OPTIONAL PARTS.....	16

SERVICE MANUAL (OCH673/OCH674)

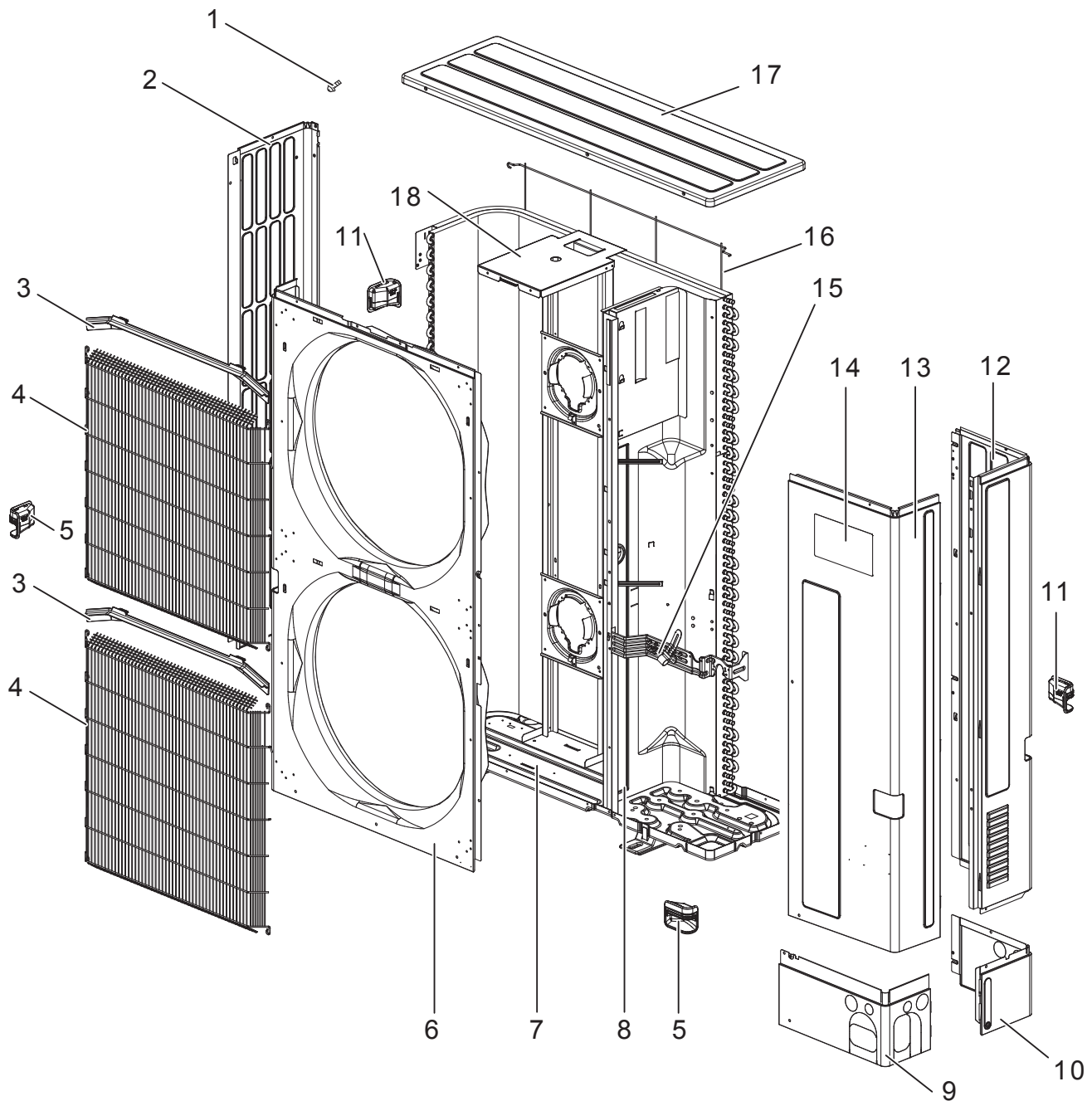
CITY MULTI

1-1. STRUCTURAL PARTS

PUMY-P112VKM4(R1)
 PUMY-P112VKM4(R1)-BS
 PUMY-P112YKM4(R1)
 PUMY-P112YKM4(R1)-BS
 PUMY-P112YKME4(R1)
 PUMY-P112YKME4(R1)-BS

PUMY-P125VKM4(R1)
 PUMY-P125VKM4(R1)-BS
 PUMY-P125YKM4(R1)
 PUMY-P125YKM4(R1)-BS
 PUMY-P125YKME4(R1)
 PUMY-P125YKME4(R1)-BS

PUMY-P140VKM4(R1)
 PUMY-P140VKM4(R1)-BS
 PUMY-P140YKM4(R1)
 PUMY-P140YKM4(R1)-BS
 PUMY-P140YKME4(R1)
 PUMY-P140YKME4(R1)-BS



1. The part quantity below indicates the required number of pieces per unit.

No.	Parts No.	Parts Name	PUMY-P112VKM4(R1)	PUMY-P125VKM4(R1)	PUMY-P140VKM4(R1)	PUMY-P112VKM4(R1)-BS	PUMY-P125VKM4(R1)-BS	PUMY-P140VKM4(R1)-BS	Wiring Diagram Symbol	Remarks [Drawing No.]
1	—	F. ST SCREW (5x12)	40	40	40	40	40	40		[BT12L041H12]
2	R01 E30 662	SIDE PANEL(L)	1	1	1	1	1	1		
3	R01 E02 631	ICE GUARD	2	2	2	2	2	2		
4	T7W E13 691	WIRE GRILLE	2	2	2	2	2	2		
5	R01 E05 655	HANDLE(FRONT)	2	2	2	2	2	2		
6	R01 E23 668	FRONT PANEL	1	1	1	1	1	1		
7	R01 E53 686	BASE ASSY	1	1	1	1	1	1		
8	—	SEPARATOR	1	1	1	1	1	1		[BK00B817GR6]
9	R01 E41 658	COVER PANEL(FRONT)	1	1	1	1	1	1		
10	R01 E34 658	COVER PANEL(REAR)	1	1	1	1	1	1		
11	R01 E06 655	HANDLE(REAR)	2	2	2	2	2	2		
12	R01 E55 661	SIDE PANEL(R)	1	1	1	1	1	1		
13	T7W E20 668	SERVICE PANEL	1	1	1	1	1	1		
14	T7W A11 005	BRAND LABEL (ME_CM)	1	1	1	1	1	1		
15	—	VALVE BED	1	1	1	1	1	1		[BK00C375G62]
16	R01 E10 698	REAR GUARD	1	1	1	1	1	1		
17	R01 E36 641	TOP PANEL	1	1	1	1	1	1		
18	R01 E59 130	MOTOR SUPPORT	1	1	1	1	1	1		

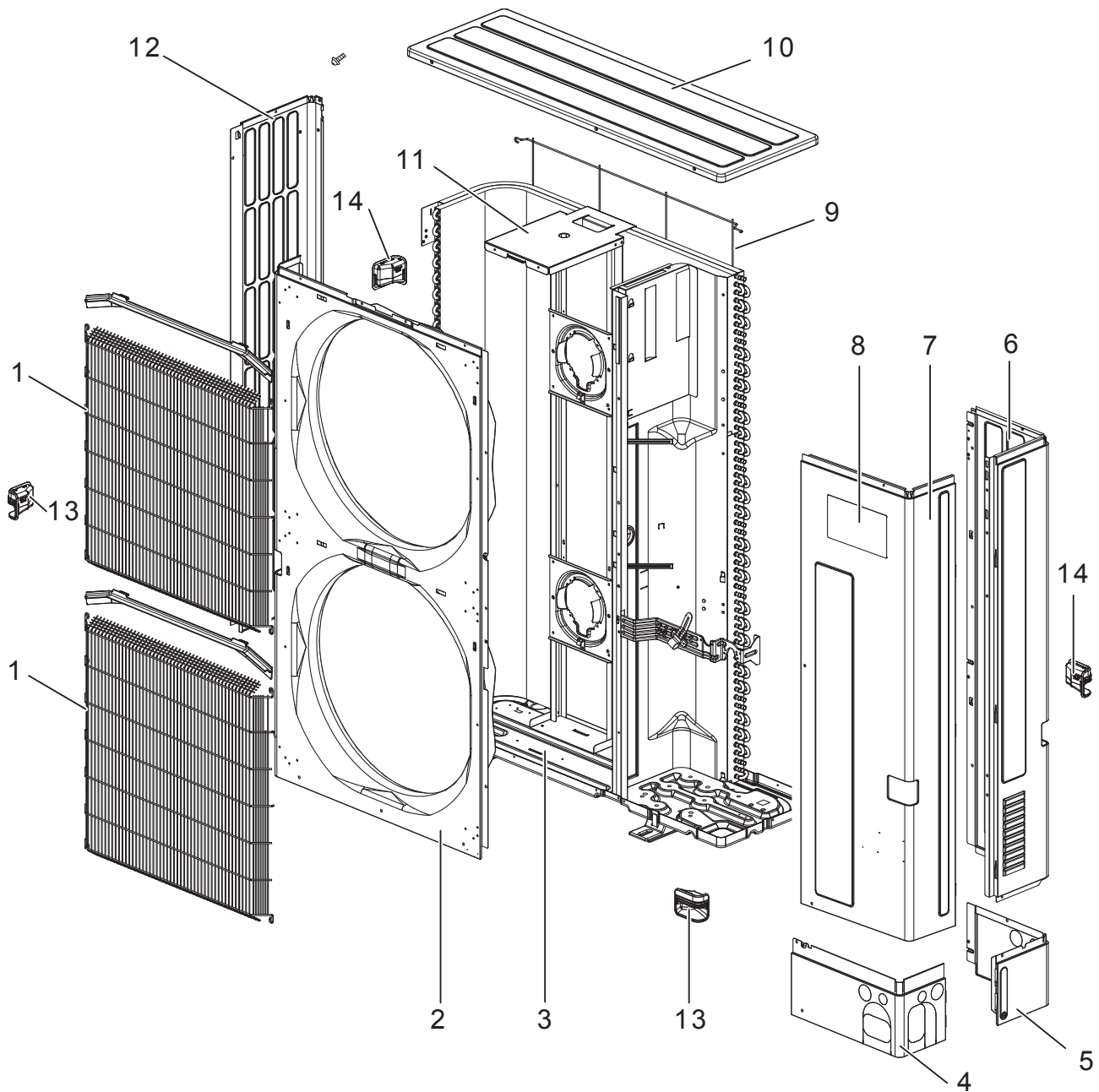
No.	Parts No.	Parts Name	PUMY-P112YKM4(R1)	PUMY-P125YKM4(R1)	PUMY-P140YKM4(R1)	PUMY-P112YKM4(R1)-BS	PUMY-P125YKM4(R1)-BS	PUMY-P140YKM4(R1)-BS	PUMY-P112YKME4(R1)	PUMY-P125YKME4(R1)	PUMY-P140YKME4(R1)	PUMY-P112YKME4(R1)-BS	PUMY-P125YKME4(R1)-BS	PUMY-P140YKME4(R1)-BS	Wiring Diagram Symbol	Remarks [Drawing No.]
1	—	F. ST SCREW (5X12)	40	40	40	40	40	40	40	40	40	40	40	40		[BT12L041H12]
2	R01 E30 662	SIDE PANEL(L)	1	1	1	1	1	1	1	1	1	1	1	1		
3	R01 E02 631	ICE GUARD	2	2	2	2	2	2	2	2	2	2	2	2		
4	T7W E13 691	WIRE GRILLE	2	2	2	2	2	2	2	2	2	2	2	2		
5	R01 E05 655	HANDLE(FRONT)	2	2	2	2	2	2	2	2	2	2	2	2		
6	R01 E23 668	FRONT PANEL	1	1	1	1	1	1	1	1	1	1	1	1		
7	R01 E53 686	BASE ASSY	1	1	1	1	1	1	1	1	1	1	1	1		
8	—	SEPARATOR	1	1	1	1	1	1	1	1	1	1	1	1		[BK00B817GR9]
9	R01 E41 658	COVER PANEL(FRONT)	1	1	1	1	1	1	1	1	1	1	1	1		
10	R01 E34 658	COVER PANEL(REAR)	1	1	1	1	1	1	1	1	1	1	1	1		
11	R01 E06 655	HANDLE(REAR)	2	2	2	2	2	2	2	2	2	2	2	2		
12	R01 E72 661	SIDE PANEL(R)	1	1	1	1	1	1	1	1	1	1	1	1		
13	T7W E21 667	SERVICE PANEL	1	1	1	1	1	1	1	1	1	1	1	1		
14	T7W A11 005	BRAND LABEL (ME_CM)	1	1	1	1	1	1	1	1	1	1	1	1		
15	—	VALVE BED	1	1	1	1	1	1	1	1	1	1	1	1		[BK00C375G62]
16	R01 E10 698	REAR GUARD	1	1	1	1	1	1	1	1	1	1	1	1		
17	R01 E36 641	TOP PANEL	1	1	1	1	1	1	1	1	1	1	1	1		
18	R01 E59 130	MOTOR SUPPORT	1	1	1	1	1	1	1	1	1	1	1	1		

STRUCTURAL PARTS

PUMY-P112YKM4R2
PUMY-P112YKM4-ETR2
PUMY-P112YKM4-ERR2
PUMY-P112YKM4-BSR2
PUMY-P112YKM4-ETBSR2
PUMY-P112YKM4-ERBSR2
PUMY-P112YKME4R2
PUMY-P112YKME4-BSR2

PUMY-P125YKM4R2
PUMY-P125YKM4-ETR2
PUMY-P125YKM4-ERR2
PUMY-P125YKM4-BSR2
PUMY-P125YKM4-ETBSR2
PUMY-P125YKM4-ERBSR2
PUMY-P125YKME4R2
PUMY-P125YKME4-BSR2

PUMY-P140YKM4R2
PUMY-P140YKM4-ETR2
PUMY-P140YKM4-ERR2
PUMY-P140YKM4-BSR2
PUMY-P140YKM4-ETBSR2
PUMY-P140YKM4-ERBSR2
PUMY-P140YKME4R2
PUMY-P140YKME4-BSR2



1. The part quantity below indicates the required number of pieces per unit.

No.	Parts No.	Parts Name	PUMY-P112YKM4R2														Wiring Diagram Symbol	Remarks [Drawing No.]			
			PUMY-P125YKM4R2	PUMY-P140YKM4R2	PUMY-P112YKM4-ETR2	PUMY-P125YKM4-ETR2	PUMY-P140YKM4-ETR2	PUMY-P112YKM4-ERR2	PUMY-P125YKM4-ERR2	PUMY-P140YKM4-ERR2	PUMY-P112YKM4-BSR2	PUMY-P125YKM4-BSR2	PUMY-P140YKM4-BSR2	PUMY-P112YKM4-ETBSR2	PUMY-P125YKM4-ETBSR2	PUMY-P140YKM4-ETBSR2			PUMY-P112YKM4-ERBSR2	PUMY-P125YKM4-ERBSR2	PUMY-P140YKM4-ERBSR2
1	T7W E13 691	WIRE GRILLE	2	2	2	2	2	2	2	2	2	2	2	2	2	2	2	2	2		
2	R01 E23 668	FRONT PANEL	1	1	1	1	1	1	1	1	1	1	1	1	1	1	1	1	1		
3	R01 E53 686	BASE ASSY	1	1	1	1	1	1	1	1	1	1	1	1	1	1	1	1	1		
4	R01 E41 658	COVER PANEL(FRONT)	1	1	1	1	1	1	1	1	1	1	1	1	1	1	1	1	1		
5	R01 E42 658	COVER PANEL(REAR)	1	1	1	1	1	1	1	1	1	1	1	1	1	1	1	1	1		
6	R01 E72 661	SIDE PANEL(R)	1	1	1	1	1	1	1	1	1	1	1	1	1	1	1	1	1		
7	T7W E21 667	SERVICE PANEL	1	1	1	1	1	1	1	1	1	1	1	1	1	1	1	1	1		
8	T7W A11 005	BRAND LABEL(ME_CM)	1	1	1	1	1	1	1	1	1	1	1	1	1	1	1	1	1		
9	R01 E10 698	REAR GUARD	1	1	1	1	1	1	1	1	1	1	1	1	1	1	1	1	1		
10	R01 E36 641	TOP PANEL	1	1	1	1	1	1	1	1	1	1	1	1	1	1	1	1	1		
11	R01 E59 130	MOTOR SUPPORT	1	1	1	1	1	1	1	1	1	1	1	1	1	1	1	1	1		
12	R01 E30 662	SIDE PANEL(L)	1	1	1	1	1	1	1	1	1	1	1	1	1	1	1	1	1		
13	R01 E05 655	HANDLE(FRONT)	2	2	2	2	2	2	2	2	2	2	2	2	2	2	2	2	2		
14	R01 E06 655	HANDLE(REAR)	2	2	2	2	2	2	2	2	2	2	2	2	2	2	2	2	2		

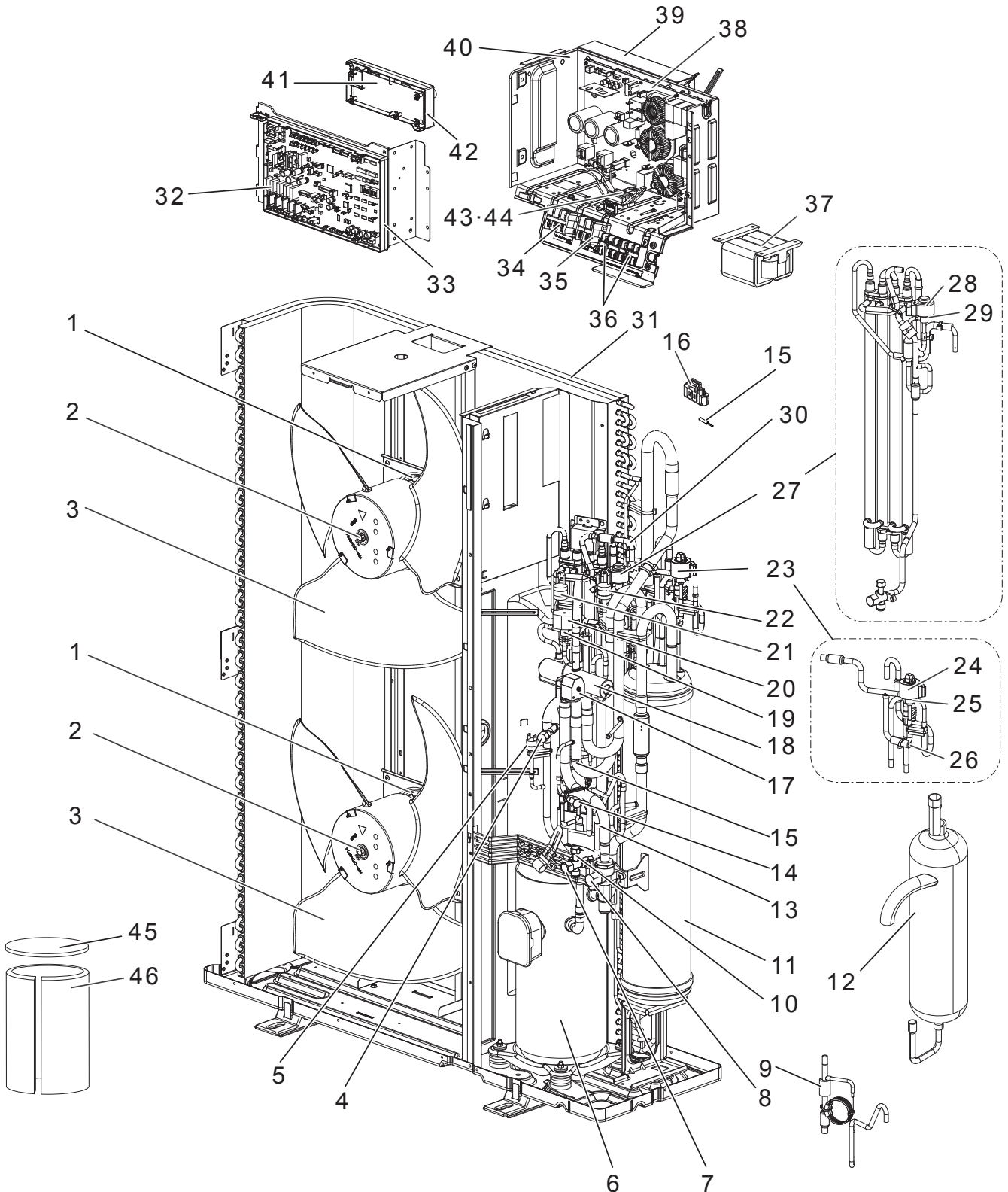
No.	Parts No.	Parts Name	PUMY-P112YKME4R2						PUMY-P125YKME4R2			PUMY-P140YKME4R2			Wiring Diagram Symbol	Remarks [Drawing No.]
			PUMY-P112YKME4R2	PUMY-P125YKME4R2	PUMY-P140YKME4R2	PUMY-P112YKME4-BSR2	PUMY-P125YKME4-BSR2	PUMY-P140YKME4-BSR2	PUMY-P112YKME4-BSR2	PUMY-P125YKME4-BSR2	PUMY-P140YKME4-BSR2					
1	T7W E13 691	WIRE GRILLE	2	2	2	2	2	2	2	2	2	2	2			
2	R01 E23 668	FRONT PANEL	1	1	1	1	1	1	1	1	1	1	1			
3	R01 E53 686	BASE ASSY	1	1	1	1	1	1	1	1	1	1	1			
4	R01 E41 658	COVER PANEL(FRONT)	1	1	1	1	1	1	1	1	1	1	1			
5	R01 E42 658	COVER PANEL(REAR)	1	1	1	1	1	1	1	1	1	1	1			
6	R01 E72 661	SIDE PANEL(R)	1	1	1	1	1	1	1	1	1	1	1			
7	T7W E21 667	SERVICE PANEL	1	1	1	1	1	1	1	1	1	1	1			
8	T7W A11 005	BRAND LABEL(ME_CM)	1	1	1	1	1	1	1	1	1	1	1			
9	R01 E10 698	REAR GUARD	1	1	1	1	1	1	1	1	1	1	1			
10	R01 E36 641	TOP PANEL	1	1	1	1	1	1	1	1	1	1	1			
11	R01 E59 130	MOTOR SUPPORT	1	1	1	1	1	1	1	1	1	1	1			
12	R01 E30 662	SIDE PANEL(L)	1	1	1	1	1	1	1	1	1	1	1			
13	R01 E05 655	HANDLE(FRONT)	2	2	2	2	2	2	2	2	2	2	2			
14	R01 E06 655	HANDLE(REAR)	2	2	2	2	2	2	2	2	2	2	2			

1-2. FUNCTIONAL PARTS

PUMY-P112VKM4(R1)
PUMY-P112VKM4(R1)-BS

PUMY-P125VKM4(R1)
PUMY-P125VKM4(R1)-BS

PUMY-P140VKM4(R1)
PUMY-P140VKM4(R1)-BS



1. The part quantity below indicates the required number of pieces per unit.
2. The circled No. indicates that the part is not shown in the figure.

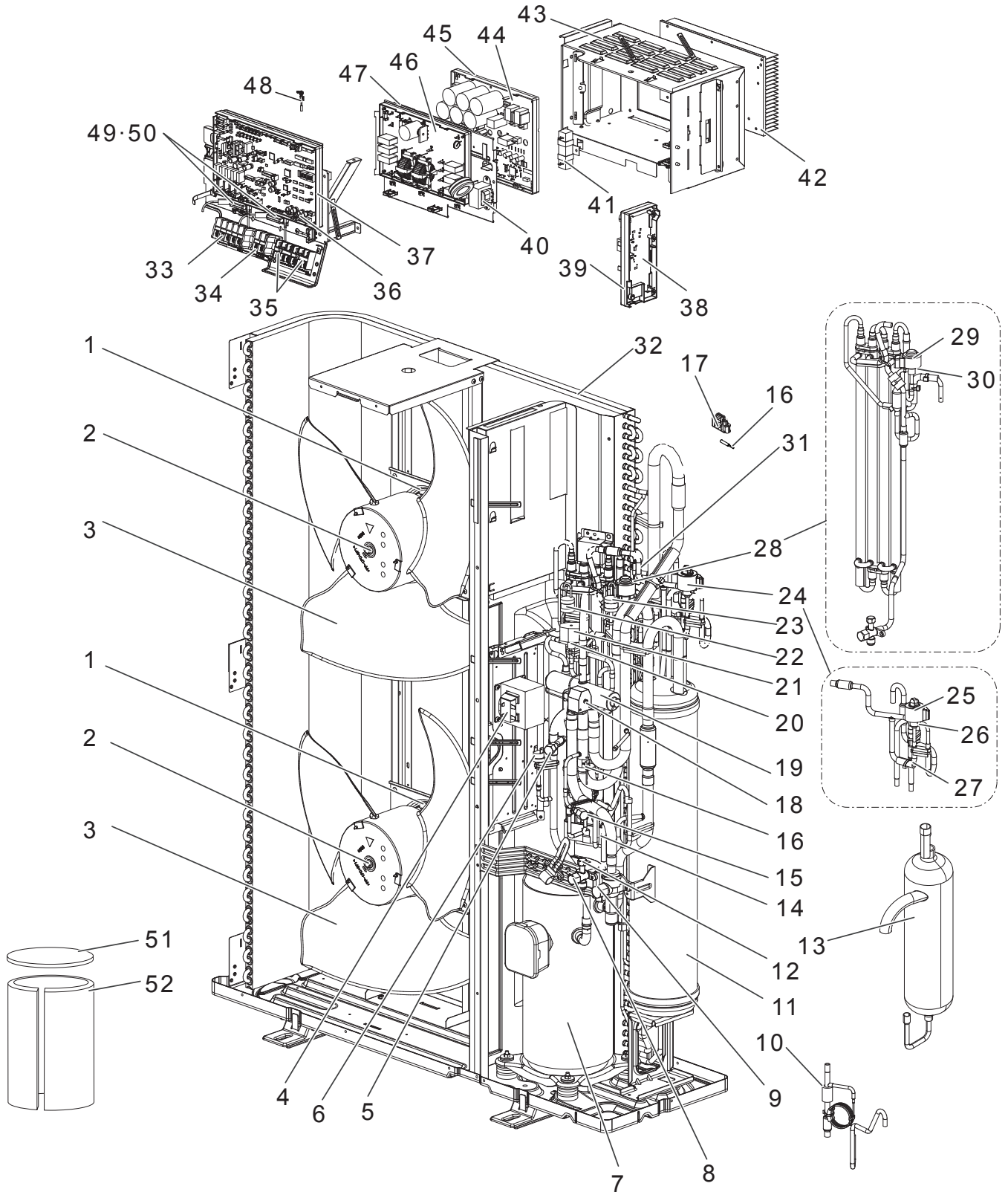
No.	Parts No.	Parts Name	PJMY-P112VKM4(R1)	PJMY-P125VKM4(R1)	PJMY-P140VKM4(R1)	PJMY-P112VKM4(R1)-BS	PJMY-P125VKM4(R1)-BS	PJMY-P140VKM4(R1)-BS	Wiring Diagram Symbol	Remarks [Drawing No.]
1	R01 E83 221	FAN MOTOR	2	2	2	2	2	2	MF1, MF2	
2	R01 E16 097	CAP NUT (MEC)M6	2	2	2	2	2	2		
3	R01 E16 115	PROPELLER FAN /D550	2	2	2	2	2	2		
4	R01 E29 413	CHARGE PLUG /LB54	1	1	1	1	1	1		
5	R01 H06 208	HIGH PRESSURE SWITCH	1	1	1	1	1	1	63H	
6	T97 477 077	COMPRESSOR	1	1	1	1	1	1	MC	ANB33FNHMT, Includes RUBBERMOUNT
7	R01 E25 410	STOP VALVE 3/8F	1	1	1	1	1	1		
8	R01 E16 411	BALL VALVE 5/8F	1	1	1	1	1	1		Includes STRAINER
9	R01 E02 426	CT ASSY	1	1	1	1	1	1		
10	R01 E36 201	THERMISTOR (SHELL)	1	1	1	1	1	1	TH4 (Compressor)	
11	R01 E81 440	ACCUMULATOR	1	1	1	1	1	1		
12	R01 E16 490	OIL SEPARATOR	1	1	1	1	1	1		
13	R01 H97 202	THERMISTOR	1	1	1	1	1	1	TH2 (HIC Pipe)	
14	R01 E24 413	CHARGE PLUG /LB90	1	1	1	1	1	1		
15	R01 H99 202	THERMISTOR W	1	1	1	1	1	1	TH6 (Suction Pipe) TH7 (Ambient)	Combined Port
16	R01 E05 091	THERMISTOR HOLDER	1	1	1	1	1	1		
17	T7W E89 242	SOLENOID COIL (21S4)	1	1	1	1	1	1	For 21S4	Includes BOLT (M5)
18	R01 E39 403	4WAY VALVE	1	1	1	1	1	1	21S4	
19	R01 E18 428	SOLENOID VALVE	1	1	1	1	1	1	SV1	Bypass Valve (SV1)
20	T7W H02 242	SOLENOID COIL (SV)	1	1	1	1	1	1	For SV1	
21	R01 E14 208	H.P. SENSOR	1	1	1	1	1	1	63HS	
22	R01 E04 209	LOW PRESSURE SENSOR	1	1	1	1	1	1	63LS	
23	R01 R27 401	LEV ASSY-A	1	1	1	1	1	1		Includes LEV COIL
24	R01 HR1 242	COIL (LEV) /XAP-5P WH	1	1	1	1	1	1	LEV-A	
25	R01 K23 401	LEV	1	1	1	1	1	1	LEV-A	
26	R01 E04 418	RESTRICTOR VALVE	1	1	1	1	1	1		
27	R01 R28 401	LEV ASSY HIC	1	1	1	1	1	1		Includes LEV COIL and STOP VALVE
28	R01 H58 242	COIL (LEV) /XAP-5P RED	1	1	1	1	1	1	LEV-B	
29	R01 K24 401	LEV	1	1	1	1	1	1	LEV-B	
30	R01 H87 202	THERMISTOR	1	1	1	1	1	1	TH3	Outdoor Liquid Pipe
31	R01 R65 408	HEAT EXCHANGER	1	1	1	1	1	1		
32	R01 M00 350	CONTROLLER BOARD	1	1	1	1	1	1	MULTI.B.	
33	—	BOARD CASE CONT	1	1	1	1	1	1		[BK25V808G02]
34	T7W A15 716	T.B. /L.N.E	1	1	1	1	1	1	TB1	3P(L,N,⊙)
35	T7W E57 716	T.B. /B1.B2	1	1	1	1	1	1	TB1B	2P(B1,B2)
36	R01 E27 246	T.B. /M1.M2.S	2	2	2	2	2	2	TB3, TB7	3P(M1,M2,S)
37	R01 E51 259	REACTOR	1	1	1	1	1	1	DCL	
38	R01 M02 353	POWER BOARD	1	1	1	1	1	1	P.B.	
39	R01 A10 371	HEAT SINK	1	1	1	1	1	1		Includes SCREWS
40	—	ELECTRICAL PARTS BOX	1	1	1	1	1	1		[BK00L626G20]
41	R01 E06 311	M-NET POWER BOARD	1	1	1	1	1	1	M-NET P.B.	
42	—	BOARD CASE M-NET PB	1	1	1	1	1	1		[BK25V813G04]
43	R01 E20 239	FUSE 20A 250V	2	2	2	2	2	2	FUSE1, FUSE2	20A 250V
44	R01 30L 241	FUSE HOLDER	2	2	2	2	2	2		
45	R01 A57 602	COMP FELT(TOP)	1	1	1	1	1	1		
46	T7W A08 602	COMP FELT(BODY)	1	1	1	1	1	1		
47	R01 E45 510	LEAD ASSY COMP	1	1	1	1	1	1		
48	R01 E14 239	FUSE 6.3A 250V	2	2	2	2	2	2	F1, F2	6.3A 250V

FUNCTIONAL PARTS

PUMY-P112YKM4(R1)
PUMY-P112YKM4(R1)-BS

PUMY-P125YKM4(R1)
PUMY-P125YKM4(R1)-BS

PUMY-P140YKM4(R1)
PUMY-P140YKM4(R1)-BS



1. The part quantity below indicates the required number of pieces per unit.
2. The circled No. indicates that the part is not shown in the figure.

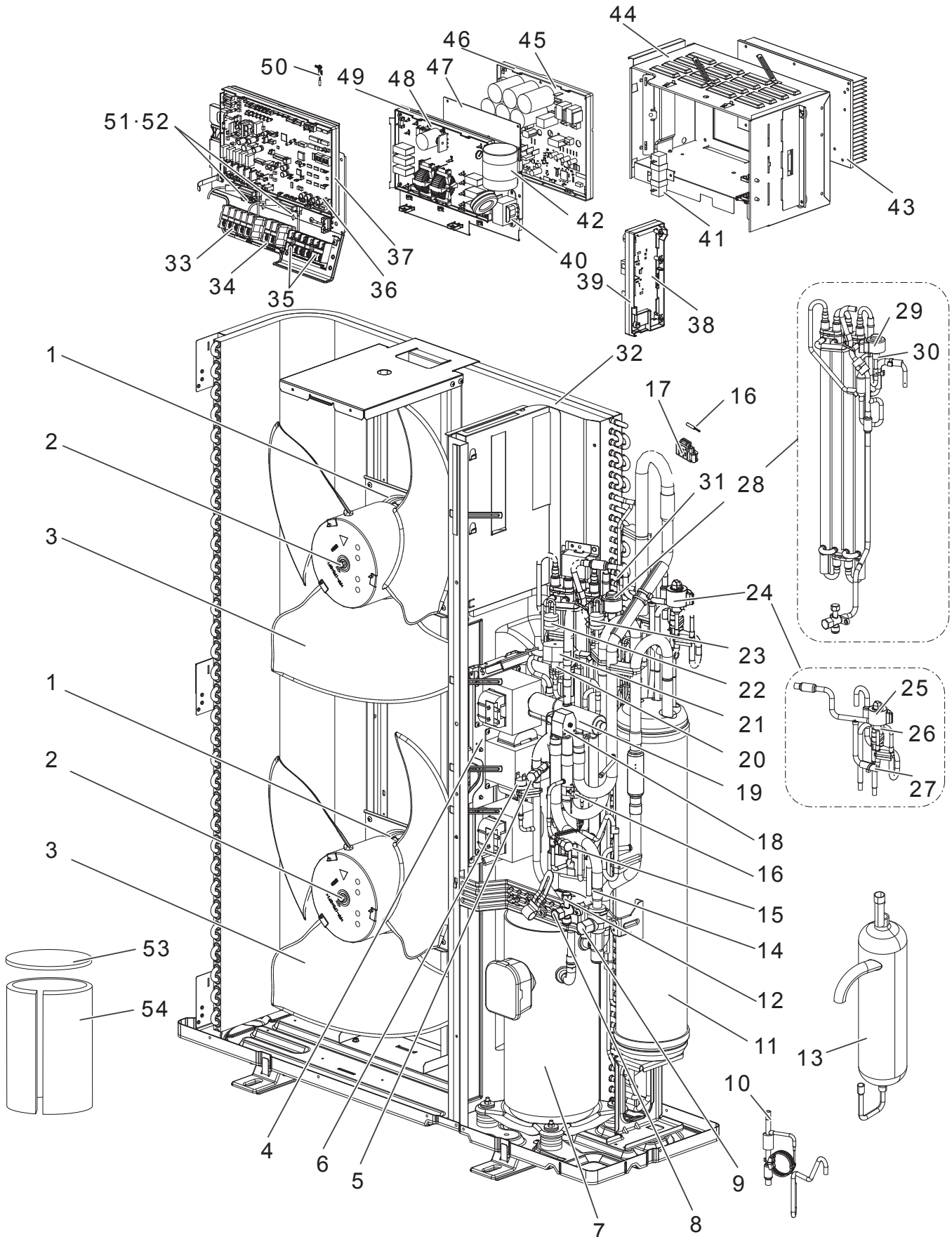
No.	Parts No.	Parts Name	PUMY-P112YKM4(R1)	PUMY-P125YKM4(R1)	PUMY-P140YKM4(R1)	PUMY-P112YKM4(R1)-BS	PUMY-P125YKM4(R1)-BS	PUMY-P140YKM4(R1)-BS	Wiring Diagram Symbol	Remarks [Drawing No.]
1	R01 E83 221	FAN MOTOR	2	2	2	2	2	2	MF1, MF2	
2	R01 E16 097	CAP NUT (MEC) M6	2	2	2	2	2	2		
3	R01 E16 115	PROPELLER FAN /D550	2	2	2	2	2	2		
4	R01 E50 259	REACTOR	1	1	1	1	1	1	DCL	
5	R01 E29 413	CHARGE PLUG /LB54	1	1	1	1	1	1		
6	R01 H06 208	HIGH PRESSURE SWITCH	1	1	1	1	1	1	63H	
7	T97 476 077	COMPRESSOR	1	1	1	1	1	1	MC	ANB33FNGMT Includes RUBBERMOUNT
8	R01 E25 410	STOP VALVE 3/8F	1	1	1	1	1	1		
9	R01 E16 411	BALL VALVE 5/8F	1	1	1	1	1	1		Includes STRAINER
10	R01 E02 426	CT ASSY	1	1	1	1	1	1		
11	R01 E81 440	ACCUMULATOR	1	1	1	1	1	1		
12	R01 E36 201	THERMISTOR (SHELL)	1	1	1	1	1	1	TH4 (Compressor)	
13	R01 E16 490	OIL SEPARATOR	1	1	1	1	1	1		
14	R01 H97 202	THERMISTOR	1	1	1	1	1	1	TH2 (HIC Pipe)	
15	R01 E24 413	CHARGE PLUG /LB90	1	1	1	1	1	1		
16	R01 H98 202	THERMISTOR W	1	1	1	1	1	1	TH6 (Suction Pipe) TH7 (Ambient)	Combined Port
17	R01 E05 091	THERMISTOR HOLDER	1	1	1	1	1	1		
18	T7W H68 242	SOLENOID COIL (21S4)	1	1	1	1	1	1	for 21S4	Includes BOLT (M5)
19	R01 E39 403	4WAY VALVE	1	1	1	1	1	1	21S4	
20	R01 E18 428	SOLENOID VALVE	1	1	1	1	1	1	SV1	Bypass Valve(SV1)
21	T7W H02 242	SOLENOID COIL (SV)	1	1	1	1	1	1	For SV1	
22	R01 E14 208	H.P. SENSOR	1	1	1	1	1	1	63HS	
23	R01 E04 209	LOW PRESSURE SENSOR	1	1	1	1	1	1	63LS	
24	R01 R27 401	LEV ASSY-A	1	1	1	1	1	1		Includes LEV COIL
25	R01 HR1 242	COIL (LEV) /XAP-5P WH	1	1	1	1	1	1	LEV-A	
26	R01 K23 401	LEV	1	1	1	1	1	1	LEV-A	
27	R01 E04 418	RESTRICTOR VALVE	1	1	1	1	1	1		
28	R01 R28 401	LEV ASSY HIC	1	1	1	1	1	1		Includes LEV COIL and STOP VALVE
29	R01 H58 242	COIL (LEV) /XAP-5P RED	1	1	1	1	1	1	LEV-B	
30	R01 K24 401	LEV	1	1	1	1	1	1	LEV-B	
31	R01 H87 202	THERMISTOR	1	1	1	1	1	1	TH3	Outdoor Liquid Pipe
32	R01 R65 408	HEAT EXCHANGER	1	1	1	1	1	1		
33	T7W E30 716	T.B. /L1.L2.L3.N.E	1	1	1	1	1	1	TB1	5P(L1,L2,L3,N,⊙)
34	T7W E57 716	T.B. /B1.B2	1	1	1	1	1	1	TB1B	2P(B1,B2)
35	R01 E27 246	T.B. /M1.M2.S	2	2	2	2	2	2	TB3, TB7	3P(M1,M2,S)
36	R01 M00 350	CONTROLLER BOARD	1	1	1	1	1	1	MULTI.B.	
37	—	BOARD CASE CONT	1	1	1	1	1	1		[BK25V808G02]
38	R01 E06 311	M-NET POWER BOARD	1	1	1	1	1	1	M-NET P.B.	
39	—	BOARD CASE M-NET PB	1	1	1	1	1	1		[BK25V813G04]
40	R01 E31 259	REACTOR	1	1	1	1	1	1	ACL4	
41	R01 E10 233	RESISTOR	1	1	1	1	1	1	RS	
42	R01 A11 371	HEAT SINK	1	1	1	1	1	1		Includes SCREWS
43	—	ELECTRICAL PARTS BOX	1	1	1	1	1	1		[BK00C410G36]
44	T7W BB0 323	POWER BOARD	1	1	1	1	1	1	P.B.	
45	—	BOARD CASE POWER	1	1	1	1	1	1		[BK25J690G02]
46	T7W E36 346	NOISE FILTER	1	1	1	1	1	1	N.F.	
47	—	BOARD CASE NF	1	1	1	1	1	1		[RK25B240G02]
48	R01 M16 202	THERMISTOR (HS)	1	1	1	1	1	1	TH8 (Heat sink)	
49	R01 E20 239	FUSE 20A 250V	2	2	2	2	2	2	FUSE1, FUSE2	20A 250V
50	R01 30L 241	FUSE HOLDER	2	2	2	2	2	2		
51	R01 A57 602	COMP FELT(TOP)	1	1	1	1	1	1		
52	T7W A08 602	COMP FELT(BODY)	1	1	1	1	1	1		
53	R01 H31 510	LEAD ASSY COMP	1	1	1	1	1	1		
54	R01 E14 239	FUSE 6.3A 250V	2	2	2	2	2	2	F1, F2	6.3A 250V

FUNCTIONAL PARTS

PUMY-P112YKME4(R1)
PUMY-P112YKME4(R1)-BS

PUMY-P125YKME4(R1)
PUMY-P125YKME4(R1)-BS

PUMY-P140YKME4(R1)
PUMY-P140YKME4(R1)-BS



1. The part quantity below indicates the required number of pieces per unit.
2. The circled No. indicates that the part is not shown in the figure.

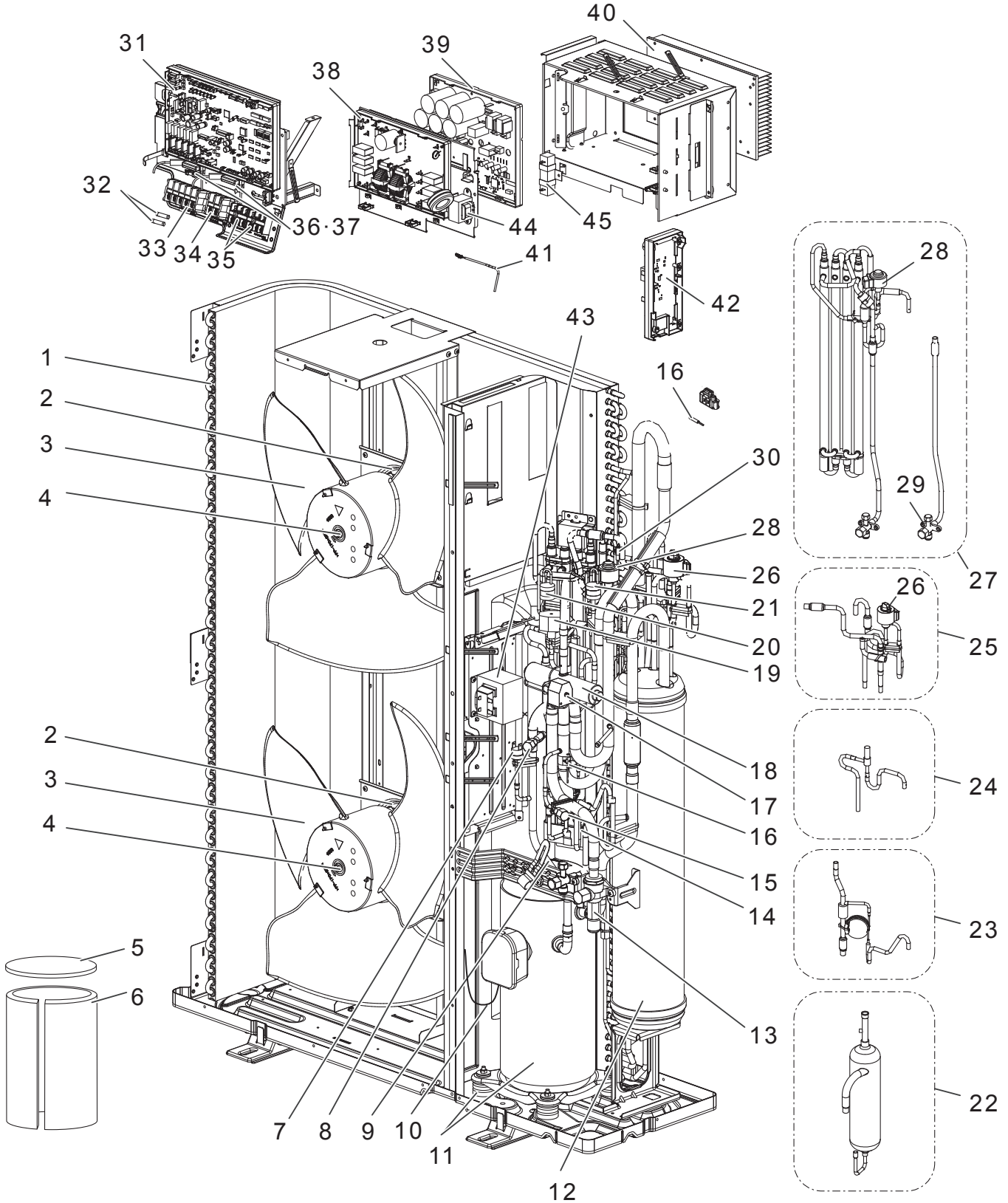
No.	Parts No.	Parts Name	PUMY-P112YKME4(R1)	PUMY-P125YKME4(R1)	PUMY-P140YKME4(R1)	PUMY-P112YKME4(R1)-BS	PUMY-P125YKME4(R1)-BS	PUMY-P140YKME4(R1)-BS	Wiring Diagram Symbol	Remarks [Drawing No.]
1	R01 E83 221	FAN MOTOR	2	2	2	2	2	2	MF1, MF2	
2	R01 E16 097	CAP NUT (MEC) M6	2	2	2	2	2	2		
3	R01 E16 115	PROPELLER FAN /D550	2	2	2	2	2	2		
4	T7W E12 259	REACTOR	3	3	3	3	3	3	ACL1, ACL2, ACL3	
5	R01 E29 413	CHARGE PLUG /LB54	1	1	1	1	1	1		
6	R01 H06 208	HIGH PRESSURE SWITCH	1	1	1	1	1	1	63H	
7	T97 476 077	COMPRESSOR	1	1	1	1	1	1	MC	ANB33FNGMT, Includes RUBBERMOUNT
8	R01 E25 410	STOP VALVE 3/8F	1	1	1	1	1	1		
9	R01 E16 411	BALL VALVE 5/8F	1	1	1	1	1	1		Includes STRAINER
10	R01 E02 426	CT ASSY	1	1	1	1	1	1		
11	R01 E81 440	ACCUMULATOR	1	1	1	1	1	1		
12	R01 E36 201	THERMISTOR (SHELL)	1	1	1	1	1	1	TH4 (Compressor)	
13	R01 E16 490	OIL SEPARATOR	1	1	1	1	1	1		
14	R01 H97 202	THERMISTOR	1	1	1	1	1	1	TH2 (HIC Pipe)	
15	R01 E24 413	CHARGE PLUG /LB90	1	1	1	1	1	1		
16	R01 H98 202	THERMISTOR W	1	1	1	1	1	1	TH6 (Suction Pipe) TH7 (Ambient)	Combined Port
17	R01 E05 091	THERMISTOR HOLDER	1	1	1	1	1	1		
18	T7W H68 242	SOLENOID COIL (21S4)	1	1	1	1	1	1	For 21S4	Includes BOLT (M5)
19	R01 E39 403	4WAY VALVE	1	1	1	1	1	1	21S4	
20	R01 E18 428	SOLENOID VALVE	1	1	1	1	1	1	SV1	Bypass Valve(SV1)
21	T7W H02 242	SOLENOID COIL (SV)	1	1	1	1	1	1	For SV1	
22	R01 E14 208	H.P. SENSOR	1	1	1	1	1	1	63HS	
23	R01 E04 209	LOW PRESSURE SENSOR	1	1	1	1	1	1	63LS	
24	R01 R27 401	LEV ASSY-A	1	1	1	1	1	1		Includes LEV COIL
25	R01 HR1 242	COIL (LEV) /XAP-5P WH	1	1	1	1	1	1	LEV-A	
26	R01 K23 401	LEV	1	1	1	1	1	1	LEV-A	
27	R01 E04 418	RESTRICTOR VALVE	1	1	1	1	1	1		
28	R01 R28 401	LEV ASSY HIC	1	1	1	1	1	1		Includes LEV COIL and STOP VALVE
29	R01 H58 242	COIL (LEV) /XAP-5P RED	1	1	1	1	1	1	LEV-B	
30	R01 K24 401	LEV	1	1	1	1	1	1	LEV-B	
31	R01 H87 202	THERMISTOR	1	1	1	1	1	1	TH3	Outdoor Liquid Pipe
32	R01 R65 408	HEAT EXCHANGER	1	1	1	1	1	1		
33	T7W E30 716	T.B. /L1.L2.L3.N.E	1	1	1	1	1	1	TB1	5P(L1,L2,L3,N,⊙)
34	T7W E57 716	T.B. /B1.B2	1	1	1	1	1	1	TB1B	2P(B1,B2)
35	R01 E27 246	T.B. /M1.M2.S	2	2	2	2	2	2	TB3, TB7	3P(M1,M2,S)
36	R01 M00 350	CONTROLLER BOARD	1	1	1	1	1	1	MULTI. B.	
37	—	BOARD CASE CONT	1	1	1	1	1	1		[BK25V808G02]
38	R01 E06 311	M-NET POWER BOARD	1	1	1	1	1	1	M-NET P.B.	
39	—	BOARD CASE M-NET PB	1	1	1	1	1	1		[BK25V813G04]
40	R01 E31 259	REACTOR	1	1	1	1	1	1	ACL4	
41	R01 E10 233	RESISTOR	1	1	1	1	1	1	RS	
42	T7W E10 254	CAPACITOR	1	1	1	1	1	1	CK	
43	R01 A11 371	HEAT SINK	1	1	1	1	1	1		Includes SCREWS
44	—	ELECTRICAL PARTS BOX	1	1	1	1	1	1		[BK00C410G36]
45	T7W BC0 323	POWER BOARD	1	1	1	1	1	1	P.B.	
46	—	BOARD CASE POWER	1	1	1	1	1	1		[BK25J690G02]
47	T7W F19 310	CONVERTER BOARD	1	1	1	1	1	1	CONV.B.	
48	T7W E37 346	NOISE FILTER	1	1	1	1	1	1	N.F.	
49	—	BOARD CASE NF	1	1	1	1	1	1		[RK25B240G02]
50	R01 M16 202	THERMISTOR (HS)	1	1	1	1	1	1	TH8	Heat sink
51	R01 E20 239	FUSE 20A 250V	2	2	2	2	2	2	FUSE1, FUSE2	20A 250V
52	R01 30L 241	FUSE HOLDER	2	2	2	2	2	2		
53	R01 A57 602	COMP FELT(TOP)	1	1	1	1	1	1		
54	T7W A08 602	COMP FELT(BODY)	1	1	1	1	1	1		
55	R01 H31 510	LEAD ASSY COMP	1	1	1	1	1	1		
56	R01 E14 239	FUSE 6.3A 250V	2	2	2	2	2	2	F1, F2	6.3A 250V

FUNCTIONAL PARTS

PUMY-P112YKM4R2
PUMY-P112YKM4-ETR2
PUMY-P112YKM4-ERR2
PUMY-P112YKM4-BSR2
PUMY-P112YKM4-ETBSR2
PUMY-P112YKM4-ERBSR2

PUMY-P125YKM4R2
PUMY-P125YKM4-ETR2
PUMY-P125YKM4-ERR2
PUMY-P125YKM4-BSR2
PUMY-P125YKM4-ETBSR2
PUMY-P125YKM4-ERBSR2

PUMY-P140YKM4R2
PUMY-P140YKM4-ETR2
PUMY-P140YKM4-ERR2
PUMY-P140YKM4-BSR2
PUMY-P140YKM4-ETBSR2
PUMY-P140YKM4-ERBSR2



1. The part quantity below indicates the required number of pieces per unit.

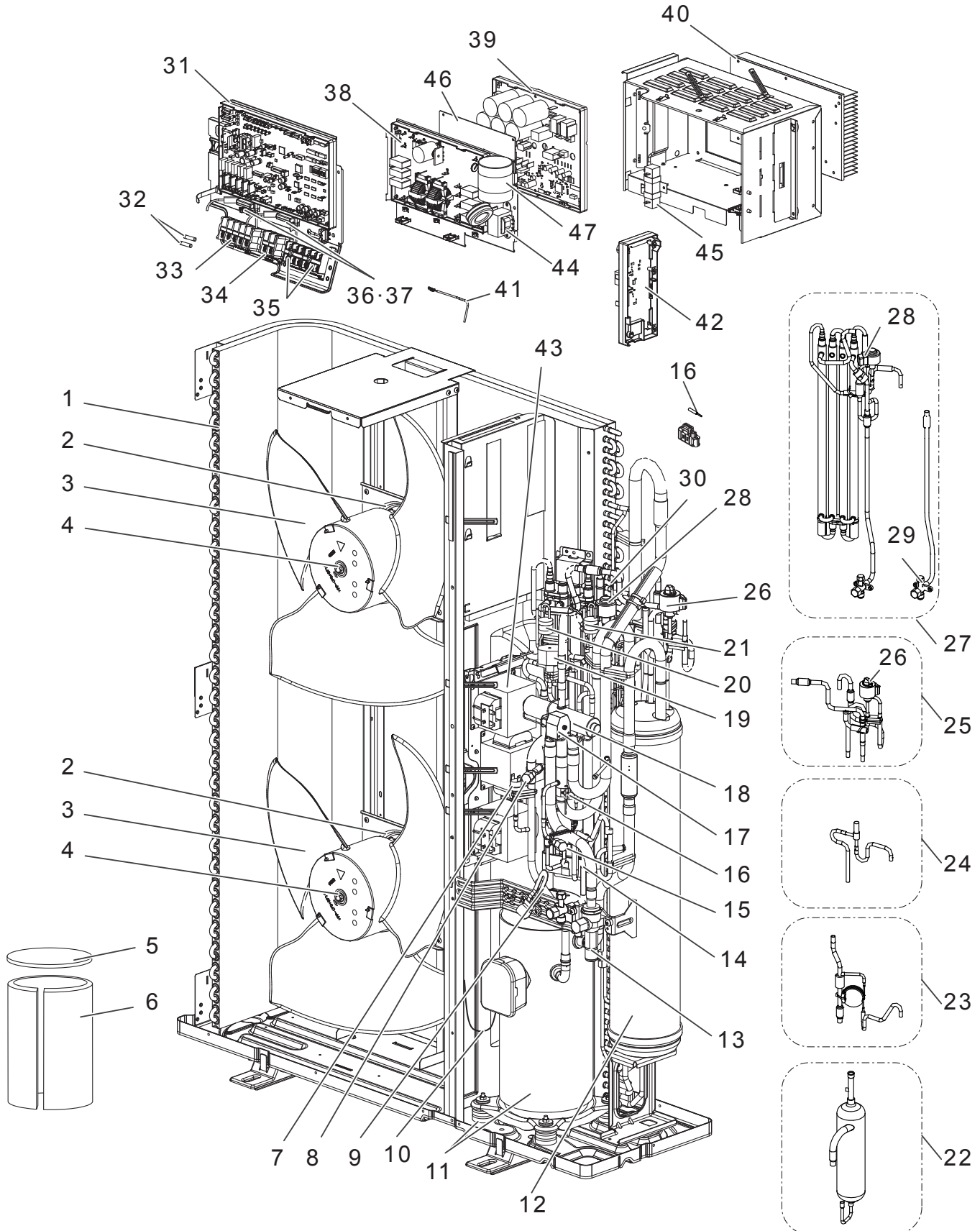
No.	Parts No.	Parts Name	PUMY-P112YKM4R2																Wiring Diagram Symbol	Remarks [Drawing No.]	
			PUMY-P125YKM4R2	PUMY-P140YKM4R2	PUMY-P112YKM4-ETR2	PUMY-P125YKM4-ETR2	PUMY-P140YKM4-ETR2	PUMY-P112YKM4-ERR2	PUMY-P125YKM4-ERR2	PUMY-P140YKM4-ERR2	PUMY-P112YKM4-BSR2	PUMY-P125YKM4-BSR2	PUMY-P140YKM4-BSR2	PUMY-P112YKM4-ETBSR2	PUMY-P125YKM4-ETBSR2	PUMY-P140YKM4-ETBSR2	PUMY-P112YKM4-ERBSR2	PUMY-P125YKM4-ERBSR2			PUMY-P140YKM4-ERBSR2
1	R01 R65 408	HEAT EXCHANGER	1	1	1	1	1	1	1	1	1	1	1	1	1	1	1	1			
2	R01 E83 221	FAN MOTOR	2	2	2	2	2	2	2	2	2	2	2	2	2	2	2	2	2	MF1, MF2	
3	R01 E16 115	PROPELLER FAN/D550	2	2	2	2	2	2	2	2	2	2	2	2	2	2	2	2	2		
4	R01 E16 097	CAP NUT(MEC) M6	2	2	2	2	2	2	2	2	2	2	2	2	2	2	2	2	2		
5	R01 A57 602	COMP FELT(TOP)	1	1	1	1	1	1	1	1	1	1	1	1	1	1	1	1	1		
6	T7W A08 602	COMP FELT(BODY)	1	1	1				1	1	1	1	1	1				1	1	1	
6	T7W B09 602	COMP FELT-B/ANB33(ET				1	1	1						1	1	1					
7	R01 H06 208	HIGH PRESSURE SWITCH	1	1	1	1	1	1	1	1	1	1	1	1	1	1	1	1	1	63H	
8	R01 E29 413	CHARGE PLUG/LB54	1	1	1	1	1	1	1	1	1	1	1	1	1	1	1	1	1		
9	R01 E36 201	THERMISTOR(SHELL)	1	1	1	1	1	1	1	1	1	1	1	1	1	1	1	1	1	TH4 (Compressor)	
10	R01 H31 510	LEAD ASSY COMP	1	1	1	1	1	1	1	1	1	1	1	1	1	1	1	1	1		
11	T97 476 077	COMPRESSOR	1	1	1	1	1	1	1	1	1	1	1	1	1	1	1	1	1	MC	ANB33FNGMT Includes RUBBER MOUNT
12	R01 E84 440	ACCUMULATOR	1	1	1	1	1	1	1	1	1	1	1	1	1	1	1	1	1		
13	R01 E16 411	BALL VALVE 5/8F	1	1	1	1	1	1	1	1	1	1	1	1	1	1	1	1	1		Includes STRAINER
14	R01 M30 202	THERMISTOR	1	1	1	1	1	1	1	1	1	1	1	1	1	1	1	1	1	TH2 (HIC Pipe)	
15	R01 E24 413	CHARGE PLUG/LB90	1	1	1	1	1	1	1	1	1	1	1	1	1	1	1	1	1		
16	R01 H98 202	THERMISTOR W	1	1	1	1	1	1	1	1	1	1	1	1	1	1	1	1	1	TH6 (Suction Pipe) TH7 (Ambient)	Combined Port
17	T7W H68 242	SOLENOID COIL(21S4)	1	1	1	1	1	1	1	1	1	1	1	1	1	1	1	1	1	21S4	Includes SCREW
18	R01 E39 403	4WAY VALVE	1	1	1	1	1	1	1	1	1	1	1	1	1	1	1	1	1	21S4	
19	T7W H02 242	SOLENOID COIL(SV)	1	1	1	1	1	1	1	1	1	1	1	1	1	1	1	1	1	SV1	Includes SCREW
20	R01 E14 208	H.P.SENSOR	1	1	1	1	1	1	1	1	1	1	1	1	1	1	1	1	1	63HS	
21	R01 E04 209	LOW PRESSURE SENSOR	1	1	1	1	1	1	1	1	1	1	1	1	1	1	1	1	1	63LS	
22	R01 E16 490	OIL SEPARATOR	1	1	1	1	1	1	1	1	1	1	1	1	1	1	1	1	1		
23	R01 E02 426	CT ASSY	1	1	1	1	1	1	1	1	1	1	1	1	1	1	1	1	1		
24	R01 E19 428	SV1 ASSY	1	1	1	1	1	1	1	1	1	1	1	1	1	1	1	1	1	SV1	
25	R01 R27 401	LEV ASSY-A	1	1	1	1	1	1	1	1	1	1	1	1	1	1	1	1	1	LEV-A	Includes RESTRICTOR VALVE
26	R01 HR1 242	COIL(LEV)/XAP-5P WH	1	1	1	1	1	1	1	1	1	1	1	1	1	1	1	1	1	LEV-A	
27	R01 R28 401	LEV ASSY HIC	1	1	1	1	1	1	1	1	1	1	1	1	1	1	1	1	1	LEV-B	
28	R01 H58 242	COIL(LEV)/XAP-5P RED	1	1	1	1	1	1	1	1	1	1	1	1	1	1	1	1	1	LEV-B	
29	R01 E36 410	STOP VALVE ASSY-3/8F	1	1	1	1	1	1	1	1	1	1	1	1	1	1	1	1	1		
30	R01 H87 202	THERMISTOR	1	1	1	1	1	1	1	1	1	1	1	1	1	1	1	1	1	TH3	
31	R01 M04 350	CONTROLLER BOARD	1	1	1	1	1	1	1	1	1	1	1	1	1	1	1	1	1	MULTI.B.	
32	R01 E14 239	FUSE 6.3A 250V	2	2	2	2	2	2	2	2	2	2	2	2	2	2	2	2	2	F1, F2	
33	T7W E30 716	T.B./L1.L2.L3.N.E	1	1	1	1	1	1	1	1	1	1	1	1	1	1	1	1	1	TB1	
34	T7W E57 716	T.B./B1.B2	1	1	1	1	1	1	1	1	1	1	1	1	1	1	1	1	1	TB1B	
35	R01 E27 246	T.B./M1.M2.S	2	2	2	2	2	2	2	2	2	2	2	2	2	2	2	2	2	TB3, TB7	
36	R01 E20 239	FUSE 20A 250V	2	2	2	2	2	2	2	2	2	2	2	2	2	2	2	2	2	FUSE1, FUSE2	
37	R01 30L 241	FUSE HOLDER	2	2	2	2	2	2	2	2	2	2	2	2	2	2	2	2	2		
38	T7W E36 346	NOISE FILTER	1	1	1	1	1	1	1	1	1	1	1	1	1	1	1	1	1	N.F.	
39	T7W M02 323	POWER BOARD	1	1	1	1	1	1	1	1	1	1	1	1	1	1	1	1	1	P.B.	
40	R01 A11 371	HEAT SINK	1	1	1	1	1	1	1	1	1	1	1	1	1	1	1	1	1		Includes SCREWS
41	R01 M16 202	THERMISTOR(HS)	1	1	1	1	1	1	1	1	1	1	1	1	1	1	1	1	1	TH8 (Heat sink)	
42	R01 E07 311	M-NET POWER BOARD	1	1	1	1	1	1	1	1	1	1	1	1	1	1	1	1	1	M-NET P.B.	
43	T7W E33 259	REACTOR	1	1	1	1	1	1	1	1	1	1	1	1	1	1	1	1	1	DCL	
44	R01 E31 259	REACTOR	1	1	1	1	1	1	1	1	1	1	1	1	1	1	1	1	1	ACL4	
45	R01 E10 233	RESISTOR	1	1	1	1	1	1	1	1	1	1	1	1	1	1	1	1	1	RS	

FUNCTIONAL PARTS

PUMY-P112YKME4R2
PUMY-P112YKME4-BSR2

PUMY-P125YKME4R2
PUMY-P125YKME4-BSR2

PUMY-P140YKME4R2
PUMY-P140YKME4-BSR2



1. The part quantity below indicates the required number of pieces per unit.

No.	Parts No.	Parts Name							Wiring Diagram Symbol	Remarks [Drawing No.]
			PUMY-P112YKME4R2	PUMY-P125YKME4R2	PUMY-P140YKME4R2	PUMY-P112YKME4-BSR2	PUMY-P125YKME4-BSR2	PUMY-P140YKME4-BSR2		
1	R01 R65 408	HEAT EXCHANGER	1	1	1	1	1	1		
2	R01 E83 221	FAN MOTOR	2	2	2	2	2	2	MF1, MF2	
3	R01 E16 115	PROPELLER FAN/D550	2	2	2	2	2	2		
4	R01 E16 097	CAP NUT(MEC) M6	2	2	2	2	2	2		
5	R01 A57 602	COMP FELT(TOP)	1	1	1	1	1	1		
6	T7W A08 602	COMP FELT(BODY)	1	1	1	1	1	1		
7	R01 H06 208	HIGH PRESSURE SWITCH	1	1	1	1	1	1	63H	
8	R01 E29 413	CHARGE PLUG/LB54	1	1	1	1	1	1		
9	R01 E36 201	THERMISTOR(SHELL)	1	1	1	1	1	1	TH4 (Compressor)	
10	R01 H31 510	LEAD ASSY COMP	1	1	1	1	1	1		
11	T97 476 077	COMPRESSOR	1	1	1	1	1	1	MC	ANB33FNGMT Includes RUBBER MOUNT
12	R01 E84 440	ACCUMULATOR	1	1	1	1	1	1		
13	R01 E16 411	BALL VALVE 5/8F	1	1	1	1	1	1		Includes STRAINER
14	R01 M30 202	THERMISTOR	1	1	1	1	1	1	TH2	
15	R01 E24 413	CHARGE PLUG/LB90	1	1	1	1	1	1		
16	R01 H98 202	THERMISTOR W	1	1	1	1	1	1	TH6 (Suction Pipe) TH7 (Ambient)	Combined Port
17	T7W H68 242	SOLENOID COIL(21S4)	1	1	1	1	1	1	21S4	Includes SCREW
18	R01 E39 403	4WAY VALVE	1	1	1	1	1	1	21S4	
19	T7W H02 242	SOLENOID COIL(SV)	1	1	1	1	1	1	SV1	Includes SCREW
20	R01 E14 208	H.P.SENSOR	1	1	1	1	1	1	63HS	
21	R01 E04 209	LOW PRESSURE SENSOR	1	1	1	1	1	1	63LS	
22	R01 E16 490	OIL SEPARATOR	1	1	1	1	1	1		
23	R01 E02 426	CT ASSY	1	1	1	1	1	1		
24	R01 E19 428	SV1 ASSY	1	1	1	1	1	1	SV1	
25	R01 R27 401	LEV ASSY-A	1	1	1	1	1	1	LEV-A	Includes RESTRICTOR VALVE
26	R01 HR1 242	COIL(LEV)/XAP-5P WH	1	1	1	1	1	1	LEV-A	
27	R01 R28 401	LEV ASSY HIC	1	1	1	1	1	1	LEV-B	
28	R01 H58 242	COIL(LEV)/XAP-5P RED	1	1	1	1	1	1	LEV-B	
29	R01 E36 410	STOP VALVE ASSY-3/8F	1	1	1	1	1	1		
30	R01 H87 202	THERMISTOR	1	1	1	1	1	1	TH3	
31	R01 M04 350	CONTROLLER BOARD	1	1	1	1	1	1	MULTI. B.	
32	R01 E14 239	FUSE 6.3A 250V	2	2	2	2	2	2	F1, F2	
33	T7W E30 716	T.B./L1.L2.L3.N.E	1	1	1	1	1	1	TB1	
34	T7W E57 716	T.B./B1.B2	1	1	1	1	1	1	TB1B	
35	R01 E27 246	T.B./M1.M2.S	2	2	2	2	2	2	TB3, TB7	
36	R01 E20 239	FUSE 20A 250V	2	2	2	2	2	2	FUSE1, FUSE2	
37	R01 30L 241	FUSE HOLDER	2	2	2	2	2	2		
38	T7W E37 346	NOISE FILTER	1	1	1	1	1	1	N.F.	
39	T7W M03 323	POWER BOARD	1	1	1	1	1	1	P.B.	
40	R01 A11 371	HEAT SINK	1	1	1	1	1	1		Includes SCREWS
41	R01 M16 202	THERMISTOR(HS)	1	1	1	1	1	1	TH8 (Heat sink)	
42	R01 E07 311	M-NET POWER BOARD	1	1	1	1	1	1	M-NET P.B.	
43	T7W E12 259	REACTOR	3	3	3	3	3	3	ACL 1, 2, 3	
44	R01 E31 259	REACTOR	1	1	1	1	1	1	ACL4	
45	R01 E10 233	RESISTOR	1	1	1	1	1	1	RS	
46	T7W F19 310	CONVERTER BOARD	1	1	1	1	1	1		
47	T7W E10 254	CAPACITOR	1	1	1	1	1	1	CK	

2

OPTIONAL PARTS

2-1. FOR OUTDOOR UNIT

Parts name	Parts No.
DRAIN SOCKET	PAC-SG61DS-E
AIR OUTLET GUIDE*1	PAC-SH96SG-E
AIR GUIDE*1	PAC-SH95AG-E
DRAIN PAN	PAC-SH97DP-E
2 BRANCH PIPE (Joint)	CMY-Y62-G-E
4 BRANCH PIPE (Joint)	CMY-Y64-G-E
8 BRANCH PIPE (Joint)	CMY-Y68-G-E
2-BRANCH PIPE (Joint) (In case of using 2-branch boxes)*2	MSDD-50AR-E (flare)
	MSDD-50BR-E (brazing)
JOINT PIPE (Unit→Extension pipe)	PAC-SG73RJ-E (ø9.52 → ø12.7)
	PAC-SG75RJ-E (ø15.88 → ø19.05)
BASE HEATER	PAC-SJ20BH-E
CONNECTION KIT	PAC-LV11M-J
BRANCH BOX	PAC-MK34BC (Flare)
	PAC-MK54BC (Flare)
INSULATION KIT	PAC-INS01-E
FAN MOTOR (For high outdoor static pressure use)	PAC-SJ71FM-E

*1 Need 2 pieces.

*2 Select a joint according to the connection method.

2-2. FOR BRANCH BOX

Parts name	Parts No.
BRANCH BOX OUTER COVER (for outdoor installation)	PAC-AK350CVR-E
REACTOR BOX	PAC-RB01BC

DIFFERENT-DIAMETER JOINT

Different-diameter joint (optional parts) (Fig.2-1)

Model name	Connected pipes diameter	Diameter A	Diameter B
	mm	mm	mm
PAC-493PI	ø6.35 → ø9.52	ø6.35	ø9.52
MAC-A454JP-E	ø9.52 → ø12.7	ø9.52	ø12.7
PAC-SG76RJ-E	ø9.52 → ø15.88	ø9.52	ø15.88
MAC-A455JP-E	ø12.7 → ø9.52	ø12.7	ø9.52
MAC-A456JP-E	ø12.7 → ø15.88	ø12.7	ø15.88

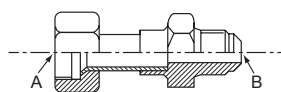


Fig.2-1

Conversion formula

1/4 inch	ø6.35 mm
3/8 inch	ø9.52 mm
1/2 inch	ø12.7 mm
5/8 inch	ø15.88 mm
3/4 inch	ø19.05 mm

MITSUBISHI ELECTRIC CORPORATION

HEAD OFFICE: TOKYO BUILDING, 2-7-3, MARUNOUCHI, CHIYODA-KU, TOKYO 100-8310, JAPAN