

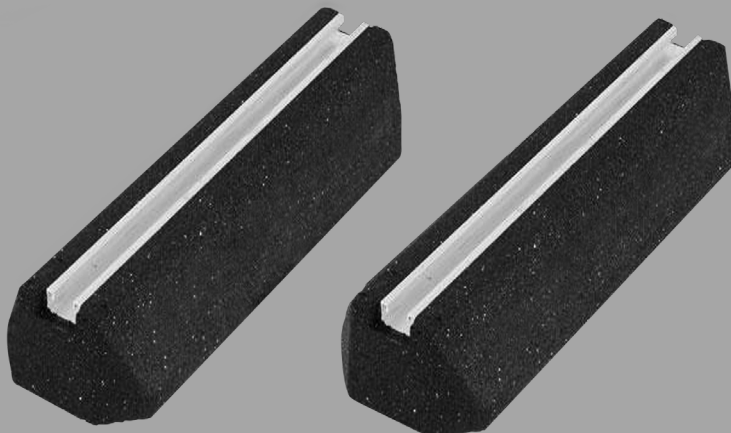
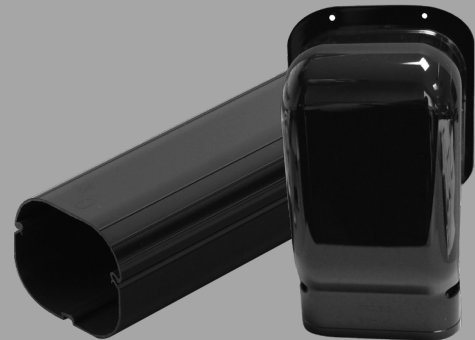
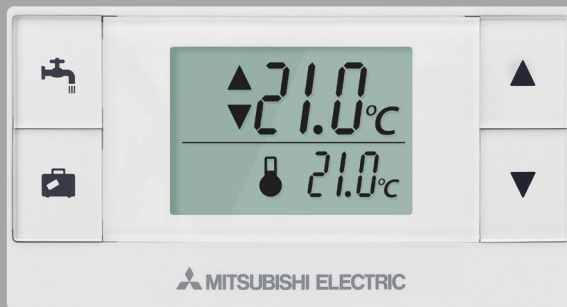
Ecodan Accessories / Optional Extras

Key Features:

- Wireless thermostat
- Heat pump anti-vibration mounts
- Anti-freeze
- External pipework trunking
- Heat pump isolator

Key Benefits:

- Optimise system control
- Minimise vibration and noise
- Protect against frost
- Ensure aesthetic installation
- Disconnect heat pump power supply



ecodan[®]
Renewable Heating Technology

Controller



Wireless Controller Transmitter



Wireless Controller Receiver



Modbus CN105 Interface

Ref Code	Model Name	Description
254308	PAR-WT50R-E	Wireless Controller Transmitter
254310	PAR-WR51R-E	Wireless Controller Receiver
579026	ACC-BEMS-A1M	Modbus CN105 Interface

Electrical



ODU Isolator



FTC6 Third Party Cylinder DHW Temperature Sensor



FTC Service Diagnostic Tool

Ref Code	Model Name	Description
408147	ACC-ISO-020	ODU Isolator 20A IP65
408148	ACC-ISO-032	ODU Isolator 32A IP65
415114	ACC-ISO-040	ODU Isolator 40A IP65
486294	PAC-TH012HT-E	FTC6 High Temperature Sensor 5m Cable
486296	PAC-TH012HTL-E	FTC6 High Temperature Sensor 30m Cable
258695	PAC-TH011-E	FTC Flow and Return Temperature Sensors 5m Cable
486211	PAC-TH011TK2-E	FTC6 Third Party Cylinder DHW Temperature Sensor 5m Cable
486293	PAC-TH011TKL2-E	FTC6 Third Party Cylinder DHW Temperature Sensor 30m Cable
584365	PAC-SK52ST	FTC Service Diagnostic Tool

Mechanical



Ecodan Anti-Vibration Fix-It-Foot 600mm Kit



Anti Freeze

Insulated Through Wall
Sleeve Kit (85mm)

External Pipework Trunking

ALL Flow
Balancing ValveInsulated Flexible
Connection Pipe

Ref Code	Model Name	Description
265072	ACC-AVM-001	Ecodan Anti-Vibration Fix-It-Foot 600mm Kit
408127	ACC-AVS-001	Ecodan Reinforced Lightweight Slab + Anti-Vibration Fix-It-Foot Kit
410358	PAC-SG61DS-E	Std Drain Socket Kit
246670	ACC-AFZ-010	10L Anti Freeze
246671	ACC-AFZ-025	25L Anti Freeze
408177	ACC-FCP-TW1	Insulated Through Wall Sleeve Kit (85mm)
408130	ACC-TRU-LE1	External Pipework Trunking Length (1m x 140mm Black x2)
408131	ACC-TRU-LE2	External Pipework Trunking Length (2m x 140mm Black x1)
408142	ACC-TRU-JO1	External Pipework Trunking Length Connector (140mm Black)
408143	ACC-TRU-CO1	External Pipework Trunking Wall Cover (140mm Black)
408144	ACC-TRU-EL1	External Pipework Trunking Elbow (140mm Black)
408145	ACC-TRU-EC1	External Pipework Trunking External Corner (140mm Black)
408146	ACC-TRU-IC1	External Pipework Trunking Internal Corner (140mm Black)
283364	ACC-2ZP-K01	Pack for 2 Zone Systems with Equal Temperatures
283363	ACC-2ZP-K02	Pack for 2 Zone Systems with Different Temperatures
217205	ACC-FBV-40L	ALL Flow Balancing Valve
293106	ACC-FCP-QUHZ	Insulated Flexible Connection Pipes (OUHZ: 750mm x 15mm) Standard Pair
408128	ACC-FCP-S22	Insulated Flexible Connection Pipes (22mm x 500mm) Standard Pair
277208	ACC-FCP-S28	Insulated Flexible Connection Pipes (28mm x 500mm) Standard Pair
408129	ACC-FCP-E28	Insulated Flexible Connection Pipes (28mm x 300mm) Elbow Pair
577787	PAC-EVP12-E1	12L Exp Vessel +PRV



Telephone: 01707 282880
email: heating@meuk.mee.com
ecodan.co.uk



UNITED KINGDOM Mitsubishi Electric Europe Living Environment Systems Division, Travellers Lane, Hatfield, Hertfordshire, AL10 8XB, England. Telephone: 01707 282880 Fax: 01707 278881
IRELAND Mitsubishi Electric Europe, Westgate Business Park, Ballymount, Dublin 24, Ireland. Telephone: (01) 419 8800 Fax: (01) 419 8890 International code: (003531)

Country of origin: United Kingdom - Japan - Thailand - Malaysia. ©Mitsubishi Electric Europe 2021. Mitsubishi and Mitsubishi Electric are trademarks of Mitsubishi Electric Europe B.V. The company reserves the right to make any variation in technical specification to the equipment described, or to withdraw or replace products without prior notification or public announcement. Mitsubishi Electric is constantly developing and improving its products. All descriptions, illustrations, drawings and specifications in this publication present only general particulars and shall not form part of any contract. All goods are supplied subject to the Company's General Conditions of Sale, a copy of which is available on request. Third-party product and brand names may be trademarks or registered trademarks of their respective owners.

Note: Refer to 'Installation Manual' and 'Instruction Book' for further 'Technical Information'. The fuse rating is for guidance only and please refer to the relevant databook for detailed specification. It is the responsibility of a qualified electrician/ electrical engineer to select the correct cable size and fuse rating based on current regulation and site specific conditions. Mitsubishi Electric's air conditioning equipment and heat pump systems contain a fluorinated greenhouse gas, R410A (GWP:2088), R32 (GWP:675), R407C (GWP:1774), R134a (GWP:1430), R513A (GWP:631), R454B (GWP:466), R1234ze (GWP:7) or R1234yf (GWP:4). *These GWP values are based on Regulation (EU) No 517/2014 from IPCC 4th edition. In case of Regulation (EU) No.626/2011 from IPCC 3rd edition, these are as follows. R410A (GWP:1975), R32 (GWP:550), R407C (GWP:1650) or R134a (GWP:1300).

Effective as of August 2021

