

PEFY-M-VMA-A1

Ceiling Concealed Ducted Indoor Unit

CITY MULTI

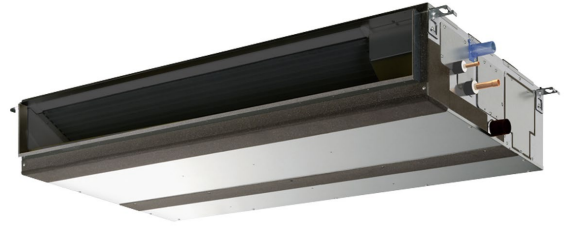
The **PEFY-M-VMA-A1** ducted indoor unit is concealed within the ceiling space to allow unobtrusive air conditioning.

Flexibility of duct layout allows air flow patterns to be arranged to suit any application.

Key Features & Benefits:

- Additional fan speed provides a wide range of airflows for greater flexibility and air distribution
- High sensible cooling capacity combined with improved airflows, enabling better off-coil temperatures for enhanced occupant comfort levels
- Low height - only 250mm
- Wide range of external static pressure settings across entire range (35-150Pa)
- Low noise levels - thanks to the use of a centrifugal fan
- Drain pump included as standard
- CN105 connector available - connect to MELCOBEMS MINI for simple BEMS interfacing
- Compatible with Plasma Quad Connect - an innovative, bolt-on air purifying device which neutralises viruses, bacteria, allergens, PM2.5, mould and dust (MAC-100FT-E)

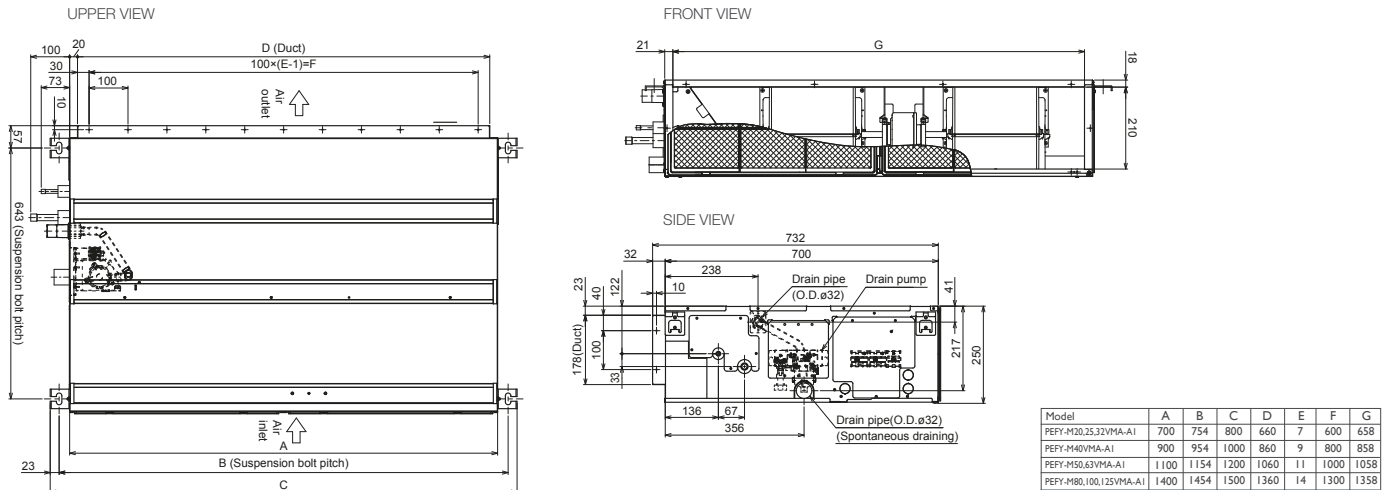




PEFY-M-VMA-A1 INDOOR UNITS		PEFY-M20VMA-A1	PEFY-M25VMA-A1	PEFY-M32VMA-A1	PEFY-M40VMA-A1	PEFY-M50VMA-A1	PEFY-M63VMA-A1	PEFY-M80VMA-A1	PEFY-M100VMA-A1	PEFY-M125VMA-A1
CAPACITY (kW)	Heating (nominal)	2.5	3.2	4.0	5.0	6.3	8.0	10.0	12.5	16.0
	Cooling (nominal)	2.2	2.8	3.6	4.5	5.6	7.1	9.0	11.2	14.0
	UK Heating	2.5	3.2	4.0	5.0	6.3	8.0	10.0	12.5	16.0
	UK Total Cooling - Hi (Sensible)	2.00 (1.90)	2.50 (2.10)	3.20 (2.60)	4.0 (3.6)	5.00 (4.80)	6.40 (5.40)	8.10 (7.2)	10.0 (8.4)	12.5 (9.70)
	UK Total Cooling - Mi1	1.92	2.40	3.05	3.57	4.27	5.79	6.86	9.64	12.37
	UK Total Cooling - Mi2	1.83	2.28	2.87	3.31	4.00	5.32	6.33	9.17	12.01
POWER INPUT (kW)	UK Total Cooling - Lo	1.65	2.06	2.62	3.07	3.60	4.86	5.62	8.38	11.09
	Heating (nominal)	0.04	0.04	0.06	0.09	0.13	0.23	0.22	0.21	0.22
	Cooling (nominal)	0.04	0.04	0.06	0.09	0.13	0.14	0.17	0.21	0.22
AIRFLOW (l/s) Cooling	Lo-Mi2-Mi1-Hi	100-125-142-166	100-125-142-166	123-150-175-208	166-191-225-316	208-241-275-426	225-266-320-436	241-300-350-518	383-466-533-616	425-516-566-616
AIRFLOW (l/s) Heating	Lo-Mi2-Mi1-Hi	100-125-142-166	100-125-142-166	123-150-175-208	166-191-225-316	208-241-275-426	225-266-320-516	241-300-350-610	383-466-533-616	425-516-566-616
EXTERNAL STATIC PRESSURE (Pa)		35-50-70-100-150	35-50-70-100-150	35-50-70-100-150	35-50-70-100-150	35-50-70-100-150	35-50-70-100-150	40-50-70-100-150	40-50-70-100-150	40-50-70-100-150
SOUND PRESSURE LEVEL (dBA)*1	Lo-Mi2-Mi1-Hi (50Pa) Cooling	21.5-23-26.5-30	21.5-23-26.5-30	24-28-31.5-35.5	23.5-25.5-28.5-37	22-24-26.5-37	23-26-30-37.5	22-25-27.5-38.5	29.5-34-37.5-40	31.5-36.5-38.5-40.5
	(50Pa) Heating	21.5-23-26.5-30	21.5-23-26.5-30	24-28-31.5-35.5	23.5-25.5-28.5-37	22-24-26.5-37	23-26-30-41.5	22-25-27.5-40.5	29.5-34-37.5-40	31.5-36.5-38.5-40.5
WEIGHT (kg)		21	21	21	25	30	30	37	37	38
DIMENSIONS (mm)	Width	700	700	700	900	1100	1100	1400	1400	1400
	Depth	732	732	732	732	732	732	732	732	732
	Height	250	250	250	250	250	250	250	250	250
ELECTRICAL SUPPLY		220-240v, 50Hz	220-240v, 50Hz	220-240v, 50Hz	220-240v, 50Hz	220-240v, 50Hz	220-240v, 50Hz	220-240v, 50Hz	220-240v, 50Hz	220-240v, 50Hz
PHASE		Single	Single	Single	Single	Single	Single	Single	Single	Single
RUNNING CURRENT (A)	Heating / Cooling	0.33/0.33	0.33/0.33	0.48/0.48	0.67/0.67	0.90/0.90	1.48/0.95	1.41/1.11	1.38/1.38	1.33/1.33
FUSE RATING (BS88) - HRC (A)		6	6	6	6	6	6	6	6	6
MAINS CABLE No. Cores		3	3	3	3	3	3	3	3	3

Note: *1 Measured in an anechoic chamber with a 1m inlet duct and 2m air outlet duct, 1.5m below unit.

PEFY-M20/25/32/40/50/63/71/80/100/125VMA-A1 DIMENSIONS



Telephone: 01707 282880
email: air.conditioning@meuk.mee.com
les.mitsubishielectric.co.uk



Mitsubishi Electric Living
Environmental Systems UK



Mitsubishi Electric
Cooling and Heating UK



[mitsubishielectricuk_les](https://www.instagram.com/mitsubishielectricuk_les)



Mitsubishi Electric Living
Environmental Systems UK



thehub.mitsubishielectric.co.uk

UNITED KINGDOM Mitsubishi Electric Europe Living Environment Systems Division, Travellers Lane, Hatfield, Hertfordshire, AL10 8XB, England. Telephone: 01707 282880 Fax: 01707 278881
IRELAND Mitsubishi Electric Europe, Westgate Business Park, Ballymount, Dublin 24, Ireland. Telephone: (01) 419 8800 Fax: (01) 419 8890 International code: (003531)

Country of origin: United Kingdom - Japan - Thailand - Malaysia. ©Mitsubishi Electric Europe 2022. Mitsubishi and Mitsubishi Electric are trademarks of Mitsubishi Electric Europe B.V. The company reserves the right to make any variation in technical specification to the equipment described, or to withdraw or replace products without prior notification or public announcement. Mitsubishi Electric is constantly developing and improving its products. All descriptions, illustrations, drawings and specifications in this publication present only general particulars and shall not form part of any contract. All goods are supplied subject to the Company's General Conditions of Sale, a copy of which is available on request. Third-party product and brand names may be trademarks or registered trademarks of their respective owners.

Note: Refer to 'Installation Manual' and 'Instruction Book' for further 'Technical Information'. The fuse rating is for guidance only and please refer to the relevant databook for detailed specification. It is the responsibility of a qualified electrician/electrical engineer to select the correct cable size and fuse rating based on current regulation and site specific conditions. Mitsubishi Electric's air conditioning equipment and heat pump systems contain a fluorinated greenhouse gas, R410A (GWP:2088), R32 (GWP:675), R407C (GWP:1774), R134a (GWP:1430), R513A (GWP:631), R454B (GWP:466), R1234ze (GWP:7) or R1234yf (GWP:4). *These GWP values are based on Regulation (EU) No 517/2014 from IPCC 4th edition. In case of Regulation (EU) No.626/2011 from IPCC 3rd edition, these are as follows. R410A (GWP:1975), R32 (GWP:550), R407C (GWP:1650) or R134a (GWP:1300).

Effective as of July 2022

