

WizardX-G07 E-OU

Air Handling Unit



The **Climaveneta WizardX Air Handling Units (AHU's)** utilise a combination of Mr Slim R32 Power Inverter heat pump technology, energy efficient thermal wheel heat recovery technology, and an integrated control system.

This integration of technologies results in highly advanced, efficient systems which are easy to install and commission.



Key Features & Benefits:

- Mr Slim R32 Power Inverter heat pump technology enables energy efficient tempering of fresh air
- Thermal wheel with hygroscopic coating for effective heat recovery
- Fully integrated controls and single point power supply, regardless of accessories, for ease of installation
- Class 4 dampers as standard on supply and return for maximum occupant safety
- Easy air flow commissioning with selectable target air volume control
- Units available in sections with all fixings, wiring, and electrical connectors included, reducing install costs and time on site
- Weatherproofed as standard for outdoor installation



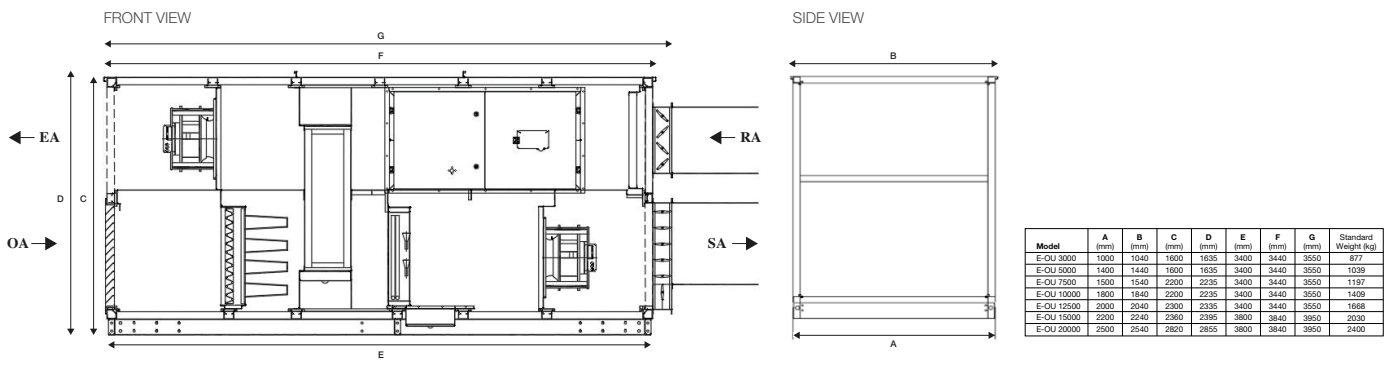


MODEL	WizardX-G07 E-OU 3000	WizardX-G07 E-OU 5000	WizardX-G07 E-OU 7500	WizardX-G07 E-OU 10000	WizardX-G07 E-OU 12500	WizardX-G07 E-OU 15000	WizardX-G07 E-OU 20000	
RATED AIR VOLUME (m³/s)	0.83	1.39	2.08	2.78	3.47	4.17	5.56	
AIR VOLUME RANGE (m³/s)	0.56 - 0.83	0.83 - 1.39	1.39 - 2.08	2.08 - 2.78	2.78 - 3.47	3.47 - 4.17	4.17 - 5.56	
EXTERNAL STATIC PRESSURE (Pa)	Standard fans	300	300	300	300	300	300	
	Up-rated fans	500	500	500	500	500	500	
COOLING CAPACITY (kW)	DX Coil Capacity	9.41	19.1	23.7	38.1	39.7	70.4	
	Wheel Recovery Capacity	24	39.4	57.7	77.8	96.2	115	
	Total Capacity	33.41	58.5	81.4	115.9	135.9	162.5	
HEATING CAPACITY (kW)	DX Coil Capacity	8.57	16.6	20.6	33	35.2	59.6	
	Wheel Recovery Capacity	30.9	49.9	73.6	98.9	123	206	
	Total Capacity	39.47	66.5	94.2	131.9	158.2	265.6	
HEAT RECOVERY EFFICIENCY (%)	79	75.5	74.7	75.1	74.7	74.6	78.9	
SPECIFIC FAN POWER (SFPint) (W/(l/s))	1.007	0.753	0.751	0.736	0.76	0.794	0.892	
SOUND POWER LEVEL (dB(A))	Fresh/Outdoor	69	74	75	78	75	81	
	Supply	79	82	85	86	84	89	
	Return	67	74	74	76	75	79	
	Exhaust	77	81	81	84	83	87	
UNIT DIMENSIONS (WxDxH)*1 (mm)	3700x1040x1600	3700x1440x1600	3700x1540x2200	3700x1840x2200	3700x2040x2300	4100x2240x2360	4100x2540x2820	
BASE WEIGHT (kg)	877	1039	1197	1409	1668	2030	2400	
STANDARD FILTRATION	Fresh air 1st stage	ISO Coarse 50% / G4						
	Fresh air 2nd stage	ISO ePM1 50% / F7 Bag Filter						
	Return air	ISO Coarse 50% / G4						
CONSTRUCTION	Profiles	60mm aluminium						
	Panels	45mm sandwich panels, galvanised steel sheets with a pre-painted external finish						
	Insulation	45 kg/m³ density polyurethane foam						
EN1886 ACHIEVED CLASSES (Deflection/Leakage/Thermal transmittance/Thermal bridging)	D1(M), L3, T2, TB4							
OPERATING RANGES (°C DB)	Target Supply Air Setpoint	17 - 28						
	DX On Coil Cooling	15 - 32						
	DX On Coil Heating	5 - 28						
ELECTRICAL POWER REQUIREMENTS	400VAC / 3ph+Positive Earth / 50Hz							
COMPATIBLE OUTDOOR UNITS	Power Inverter (R32)	2 x PUZ-ZM50	2 x PUZ-ZM100	2 x PUZ-ZM125	2 x PUZ-ZM200	3 x PUZ-ZM140	2 x PUZ-ZM250	3 x PUZ-ZM250

Notes: Please refer to Mr Slim section for outdoor unit specification data. The specification data is based on the rated conditions below, at the rated air flows.
*1 Units in sections as an option will include extra profiles, increasing the weight and dimensions of the final unit.

RATED CONDITIONS	SUMMER		WINTER	
INDOOR	23°C DB	50% RH	21°C DB	50% RH
OUTDOOR	35°C DB	50% RH	-5°C DB	85% RH

WizardX G07-E-OU DIMENSIONS



MITSUBISHI ELECTRIC
Changes for the Better
Telephone: 01707 282880
email: ventilation@meuk.mee.com
les.mitsubishielectric.co.uk

@meuk_les @green_gateway |
 Mitsubishi Electric Living Environmental Systems UK |
 Mitsubishi Electric Cooling and Heating UK |
 mitsubishielectricuk_les |
 Mitsubishi Electric Living Environmental Systems UK |
 thehub.mitsubishielectric.co.uk

UNITED KINGDOM Mitsubishi Electric Europe Living Environment Systems Division, Travellers Lane, Hatfield, Hertfordshire, AL10 8XB, England. Telephone: 01707 282880 Fax: 01707 278881
IRELAND Mitsubishi Electric Europe, Westgate Business Park, Ballymount, Dublin 24, Ireland. Telephone: (01) 419 8800 Fax: (01) 419 8890 International code: (003531)

Country of origin: United Kingdom - Italy - Turkey - Japan - Thailand - Malaysia. ©Mitsubishi Electric Europe 2022. Mitsubishi and Mitsubishi Electric are trademarks of Mitsubishi Electric Europe B.V. The company reserves the right to make any variation in technical specification to the equipment described, or to withdraw or replace products without prior notification or public announcement. Mitsubishi Electric is constantly developing and improving its products. All descriptions, illustrations, drawings and specifications in this publication present only general particulars and shall not form part of any contract. All goods are supplied subject to the Company's General Conditions of Sale, a copy of which is available on request. Third-party product and brand names may be trademarks or registered trademarks of their respective owners.

Note: Refer to 'Installation Manual' and 'Instruction Book' for further 'Technical Information'. The fuse rating is for guidance only and please refer to the relevant databook for detailed specification. It is the responsibility of a qualified electrician/electrical engineer to select the correct cable size and fuse rating based on current regulation and site specific conditions. Mitsubishi Electric's air conditioning equipment and heat pump systems contain a fluorinated greenhouse gas, R410A (GWP:2088), R32 (GWP:675), R407C (GWP:1774), R134a (GWP:1430), R513A (GWP:631), R454B (GWP:466), R1234ze (GWP:7) or R1234yf (GWP:4). *These GWP values are based on Regulation (EU) No 517/2014 from IPCC 4th edition. In case of Regulation (EU) No.626/2011 from IPCC 3rd edition, these are as follows. R410A (GWP:1975), R32 (GWP:550), R407C (GWP:1650) or R134a (GWP:1300).

Effective as of October 2022

