

PARTS CATALOG R410A

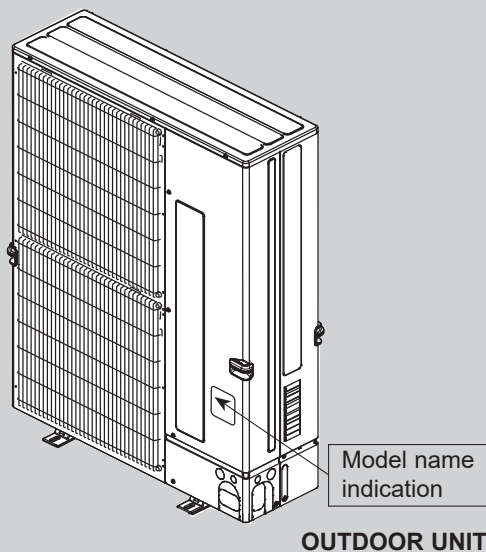
<Outdoor unit>

Model name

**PUMY-P200YKM3
PUMY-P200YKM3-ER
PUMY-P200YKM3-ET**

Salt proof model

**PUMY-P200YKM3-BS
PUMY-P200YKM3-ERBS
PUMY-P200YKM3-ETBS**



1. SERVICE REF.	3
2. SERVICE PARTS LIST	4
3. OPTIONAL PARTS	8

1 SERVICE REF.

**PUMY-P200YKM3
PUMY-P200YKM3-ER
PUMY-P200YKM3-ET**

**PUMY-P200YKM3-BS
PUMY-P200YKM3-ERBS
PUMY-P200YKM3-ETBS**

2 SERVICE PARTS LIST

STRUCTURAL PARTS

PUMY-P200YKM3

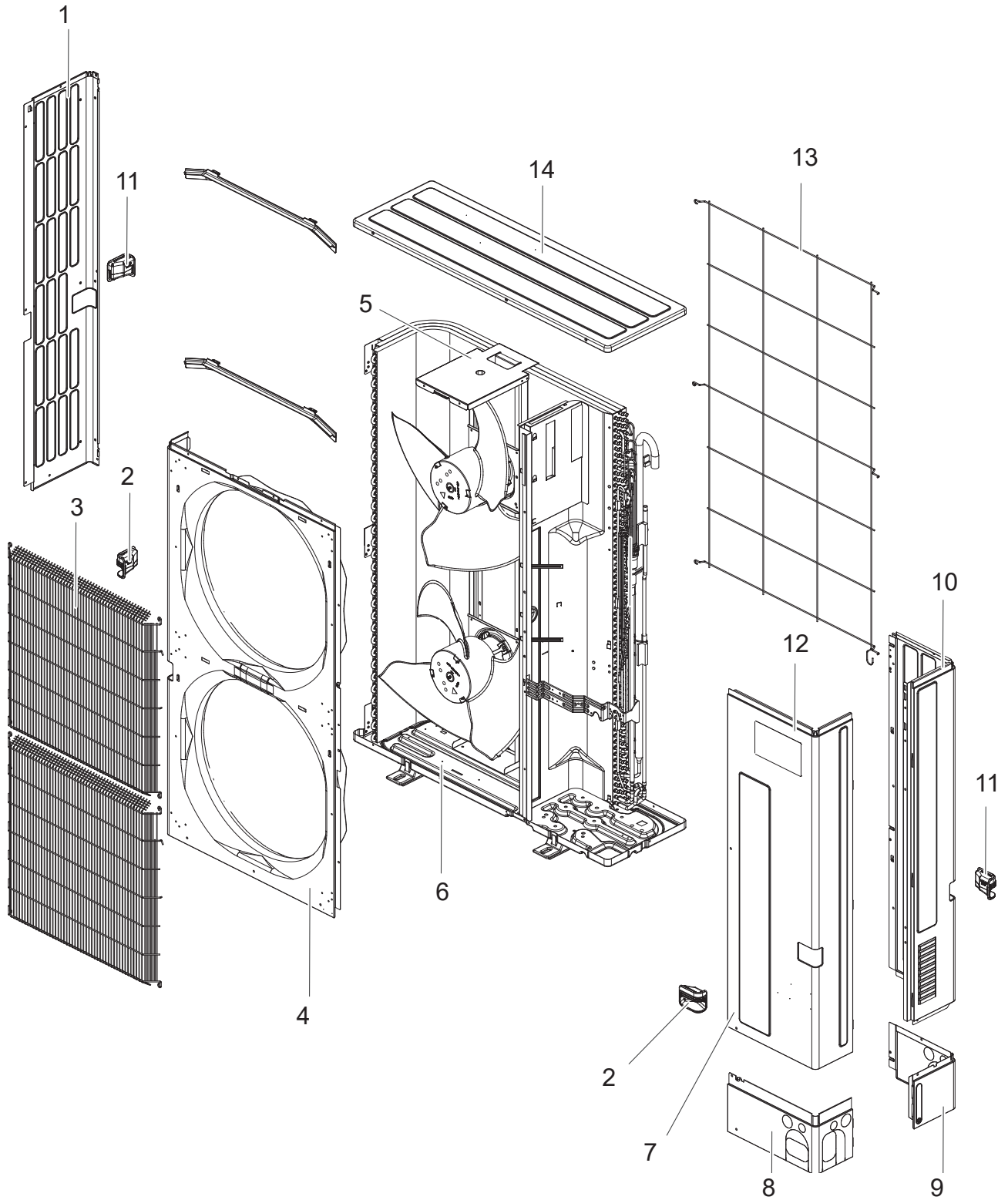
PUMY-P200YKM3-ER

PUMY-P200YKM3-ET

PUMY-P200YKM3-BS

PUMY-P200YKM3-ERBS

PUMY-P200YKM3-ETBS

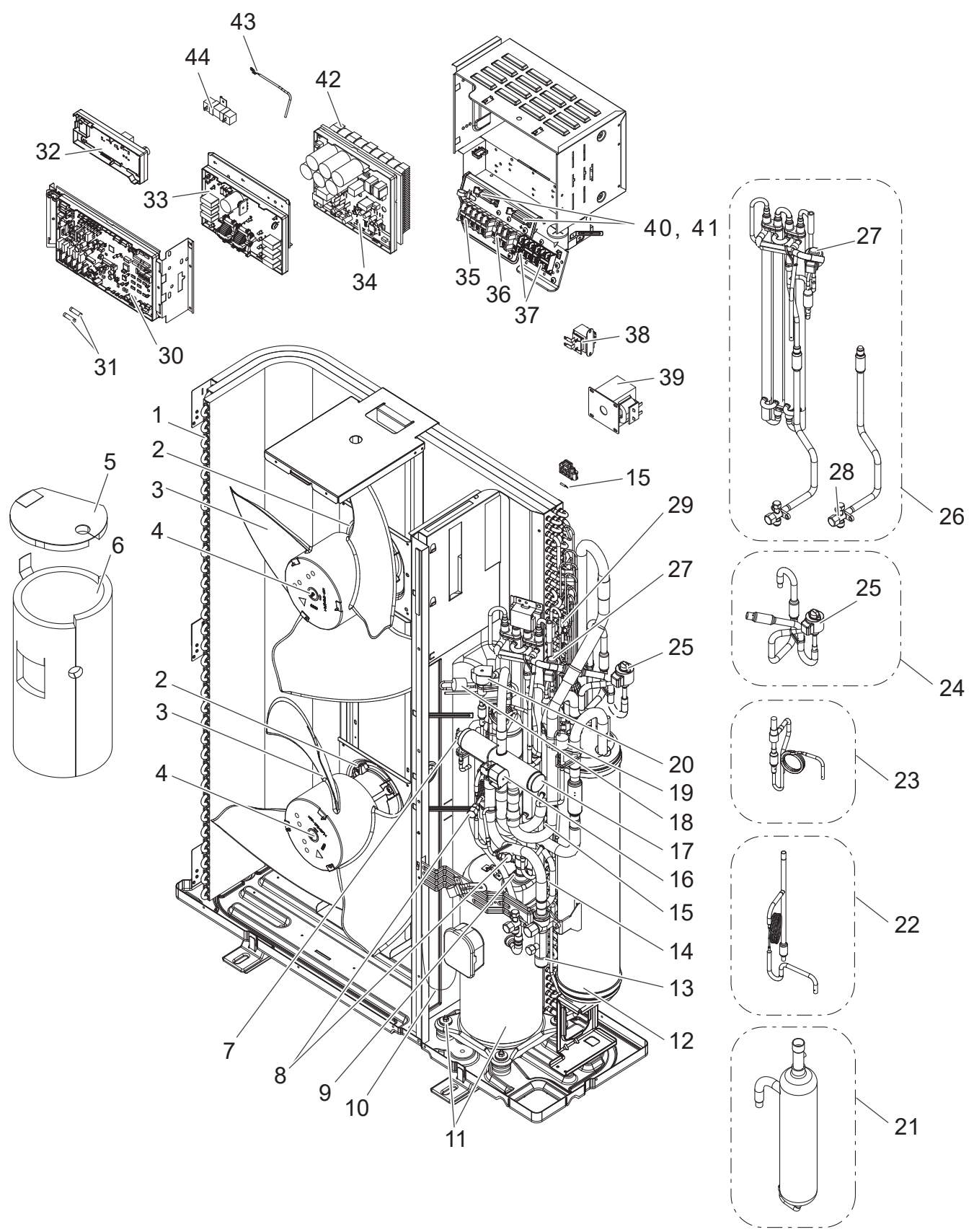


1. The part quantity below indicates the required number of pieces per unit.
2. The circled No. indicates that the part is not shown in the figure.

No.	Parts No.	Parts Name	PUMY-P200YKM3	PUMY-P200YKM3-ER	PUMY-P200YKM3-ET	PUMY-P200YKM3-BS	PUMY-P200YKM3-ERBS	PUMY-P200YKM3-ETBS	Symbol in Wiring Diagram	Remarks
1	R01 E30 662	SIDE PANEL(L)	1	1	1	1	1	1		
2	R01 E05 655	HANDLE(FRONT)	2	2	2	2	2	2		
3	T7W E13 691	WIRE GRILLE	2	2	2	2	2	2		
4	R01 E23 668	FRONT PANEL	1	1	1	1	1	1		
5	R01 E60 130	MOTOR SUPPORT	1	1	1	1	1	1		
6	R01 E53 686	BASE ASSY	1	1	1	1	1	1		
7	T7W E21 667	SERVICE PANEL	1	1	1	1	1	1		
8	R01 E41 658	COVER PANEL(FRONT)	1	1	1	1	1	1		
9	R01 E42 658	COVER PANEL(REAR)	1	1	1	1	1	1		
10	R01 E65 661	SIDE PANEL(R)	1	1	1	1	1	1		
11	R01 E06 655	HANDLE(REAR)	2	2	2	2	2	2		
12	T7W A11 005	BRAND LABEL(ME_CM)	1	1	1	1	1	1		
13	R01 E10 698	REAR GUARD	1	1	1	1	1	1		
14	R01 E36 641	TOP PANEL	1	1	1	1	1	1		

PUMY-P200YKM3
PUMY-P200YKM3-ER
PUMY-P200YKM3-ET

PUMY-P200YKM3-BS
PUMY-P200YKM3-ERBS
PUMY-P200YKM3-ETBS



1. The part quantity below indicates the required number of pieces per unit.
2. The circled No. indicates that the part is not shown in the figure.

No.	Parts No.	Parts Name	PUMY-P200YKM3	PUMY-P200YKM3-ER	PUMY-P200YKM3-ET	PUMY-P200YKM3-BS	PUMY-P200YKM3-ERBS	PUMY-P200YKM3-ETBS	Symbol in Wiring Diagram	Remarks [Drawing No.]
1	R01 R05 408	HEAT EXCHANGER	1	1	1	1	1	1		
2	R01 C01 221	FAN MOTOR	2	2	2	2	2	2	MF1,MF2	
3	R01 E16 115	PROPELLER FAN/D550	2	2	2	2	2	2		
4	R01 E16 097	CAP NUT(MEC) M6	2	2	2	2	2	2		
5	R01 T11 602	COMP FELT TOP/ANB	1	1	1	1	1	1		
6	T7W A14 602	COMP FELT(BODY)	1	1		1	1			
6	T7W B10 602	COMP FELT-B/ANB52(ET			1			1		
7	R01 H06 208	HIGH PRESSURE SWITCH	1	1	1	1	1	1	63H	
8	R01 SG0 413	CHARGE PLUG/LB90	2	2	2	2	2	2		
9	R01 E36 201	THERMISTOR/SHELL	1	1	1	1	1	1	TH4	Compressor
10	T7W H08 510	LEAD ASSY COMP	1	1	1	1	1	1		
11	T97 4A0 009	COMPRESSOR	1	1	1	1	1	1	MC	ANB52FYDMT Includes RUBBER MOUNT
12	R01 H67 440	ACCUMULATOR	1	1	1	1	1	1		
13	R01 E17 411	BALL VALVE 3/4F	1	1	1	1	1	1		Includes STRAINER
14	R01 M30 202	THERMISTOR	1	1	1	1	1	1	TH2	
15	R01 M04 202	THERMISTOR W	1	1	1	1	1	1	TH6 (Suction Pipe) TH7 (Ambient)	Combined Port
16	T7W S09 242	SOLENOID COIL(21S4)	1	1	1	1	1	1	21S4	Includes SCREW
17	R01 E52 403	4WAY VALVE	1	1	1	1	1	1	21S4	
18	R01 E14 208	H.P.SENSOR	1	1	1	1	1	1	63HS	
19	R01 E04 209	LOW PRESSURE SENSOR	1	1	1	1	1	1	63LS	
20	T7W H85 242	SOLENOID COIL(SV)	1	1	1	1	1	1	SV1	Includes SCREW
21	R01 E14 490	OIL SEPARATOR	1	1	1	1	1	1		
22	R01 C00 426	CT ASSY	1	1	1	1	1	1		
23	T7W H05 426	SV-CT ASSY	1	1	1	1	1	1	SV1	
24	T7W H61 401	LEV ASSY-A/C-HIC	1	1	1	1	1	1	LEV-A	
25	R01 HR7 242	COIL(LEV)/XAP-5P WH	1	1	1	1	1	1	LEV-A	
26	R01 B24 401	HIC&LEV-B ASSY	1	1	1	1	1	1	LEV-B	
27	R01 H62 242	COIL(LEV)/XAP-5P RED	1	1	1	1	1	1	LEV-B	
28	R01 E37 410	STOP VALVE ASSY-3/8F	1	1	1	1	1	1		
29	T7W E73 202	THERMISTOR	1	1	1	1	1	1	TH3	
30	T7W M30 315	CONTROLLER BOARD	1	1	1	1	1	1	MULTI.B.	
31	R01 E14 239	FUSE 6.3A 250V	2	2	2	2	2	2	F1, F2	
32	R01 E07 311	M-NET POWER BOARD	1	1	1	1	1	1	M-NET P.B.	
33	T7W E36 346	NOISE FILTER	1	1	1	1	1	1	N.F.	
34	T7W M04 323	POWER BOARD	1	1	1	1	1	1	P.B.	
35	T7W E30 716	T.B./L1.L2.L3.N.E	1	1	1	1	1	1	TB1	
36	T7W E57 716	T.B./B1.B2	1	1	1	1	1	1	TB1B	
37	R01 E27 246	T.B./M1.M2.S	2	2	2	2	2	2	TB3, TB7	
38	T7W E16 259	REACTOR	1	1	1	1	1	1	ACL4	
39	T7W E13 259	REACTOR	1	1	1	1	1	1	DCL	
40	R01 E20 239	FUSE 20A 250V	2	2	2	2	2	2	FUSE1, FUSE2	
41	R01 30L 241	FUSE HOLDER	2	2	2	2	2	2		
42	T7W A05 371	HEAT SINK	1	1	1	1	1	1		Includes SCREWS
43	R01 M16 202	THERMISTOR(HS)	1	1	1	1	1	1	TH8	
44	R01 E10 233	RESISTOR	1	1	1	1	1	1	RS	

3 OPTIONAL PARTS

3-1. FOR OUTDOOR UNIT

Parts name	Parts No.
DRAIN SOCKET	PAC-SG61DS-E
AIR OUTLET GUIDE*1	PAC-SH96SG-E
AIR GUIDE*1	PAC-SH95AG-E
DRAIN PAN	PAC-SH97DP-E
2 BRANCH PIPE (Joint)	CMY-Y62-G-E
4 BRANCH PIPE (Joint)	CMY-Y64-G-E
8 BRANCH PIPE (Joint)	CMY-Y68-G-E
2-BRANCH PIPE (Joint) (In case of using 2-branch boxes)*2	MSDD-50AR-E (flare)
	MSDD-50BR-E (brazing)
JOINT PIPE (Unit→Extension pipe)	PAC-SG73RJ-E (ø9.52 → ø12.7)
	PAC-SG75RJ-E (ø15.88 → ø19.05)
BASE HEATER	PAC-SJ20BH-E
CONNECTION KIT	PAC-LV11M-J
BRANCH BOX	PAC-MK34BC (Flare)
	PAC-MK54BC (Flare)

*1 Need 2 pieces.

*2 Select a joint according to the connection method.

3-2. FOR BRANCH BOX

Parts name	Parts No.
BRANCH BOX OUTER COVER (for outdoor installation)	PAC-AK350CVR-E

DIFFERENT-DIAMETER JOINT

Different-diameter joint (optional parts) (Fig.3-1)

Model name	Connected pipes diameter	Diameter A	Diameter B
	mm		
MAC-A454JP-E	ø9.52 → ø12.7	ø9.52	ø12.7
MAC-A455JP-E	ø12.7 → ø9.52	ø12.7	ø9.52
MAC-A456JP-E	ø12.7 → ø15.88	ø12.7	ø15.88
PAC-493PI	ø6.35 → ø9.52	ø6.35	ø9.52
PAC-SG76RJ-E	ø9.52 → ø15.88	ø9.52	ø15.88
PAC-SG75RJ-E	ø15.88 → ø19.05	ø15.88	ø19.05

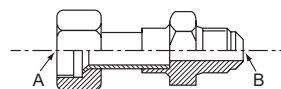


Fig.3-1

Conversion formula

1/4 in	ø6.35 mm
3/8 in	ø9.52 mm
1/2 in	ø12.7 mm
5/8 in	ø15.88 mm
3/4 in	ø19.05 mm
7/8 in	ø22.2 mm

mitsubishi electric corporation

HEAD OFFICE: TOKYO BUILDING, 2-7-3, MARUNOUCHI, CHIYODA-KU, TOKYO 100-8310, JAPAN