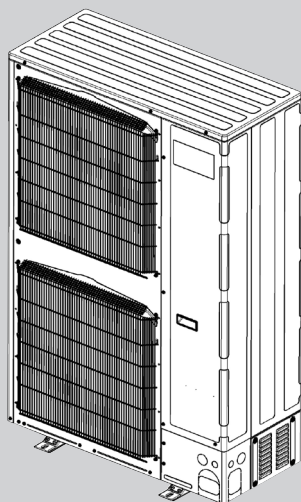


# PARTS CATALOG R410A

**<Outdoor unit>**
**[Model Name]**
**PUMY-P250YBM2**
**PUMY-P300YBM2**
**PUMY-P250YBM2-ER**
**PUMY-P300YBM2-ER**
**PUMY-P250YBM2-ET**
**PUMY-P300YBM2-ET**
**Salt proof model**
**PUMY-P250YBM2-BS**
**PUMY-P300YBM2-BS**
**PUMY-P250YBM2-ER-BS**
**PUMY-P300YBM2-ER-BS**
**PUMY-P250YBM2-ET-BS**
**PUMY-P300YBM2-ET-BS**
**Servive Ref.**
**PUMY-P250YBM2.TH**
**PUMY-P300YBM2.TH**
**PUMY-P250YBM2-ER.TH**
**PUMY-P300YBM2-ER.TH**
**PUMY-P250YBM2-ET.TH**
**PUMY-P300YBM2-ET.TH**
**PUMY-P250YBM2-BS.TH**
**PUMY-P300YBM2-BS.TH**
**PUMY-P250YBM2-ER-BS.TH**
**PUMY-P300YBM2-ER-BS.TH**
**PUMY-P250YBM2-ET-BS.TH**
**PUMY-P300YBM2-ET-BS.TH**

**OUTDOOR UNIT**


---

**CONTENTS**


---

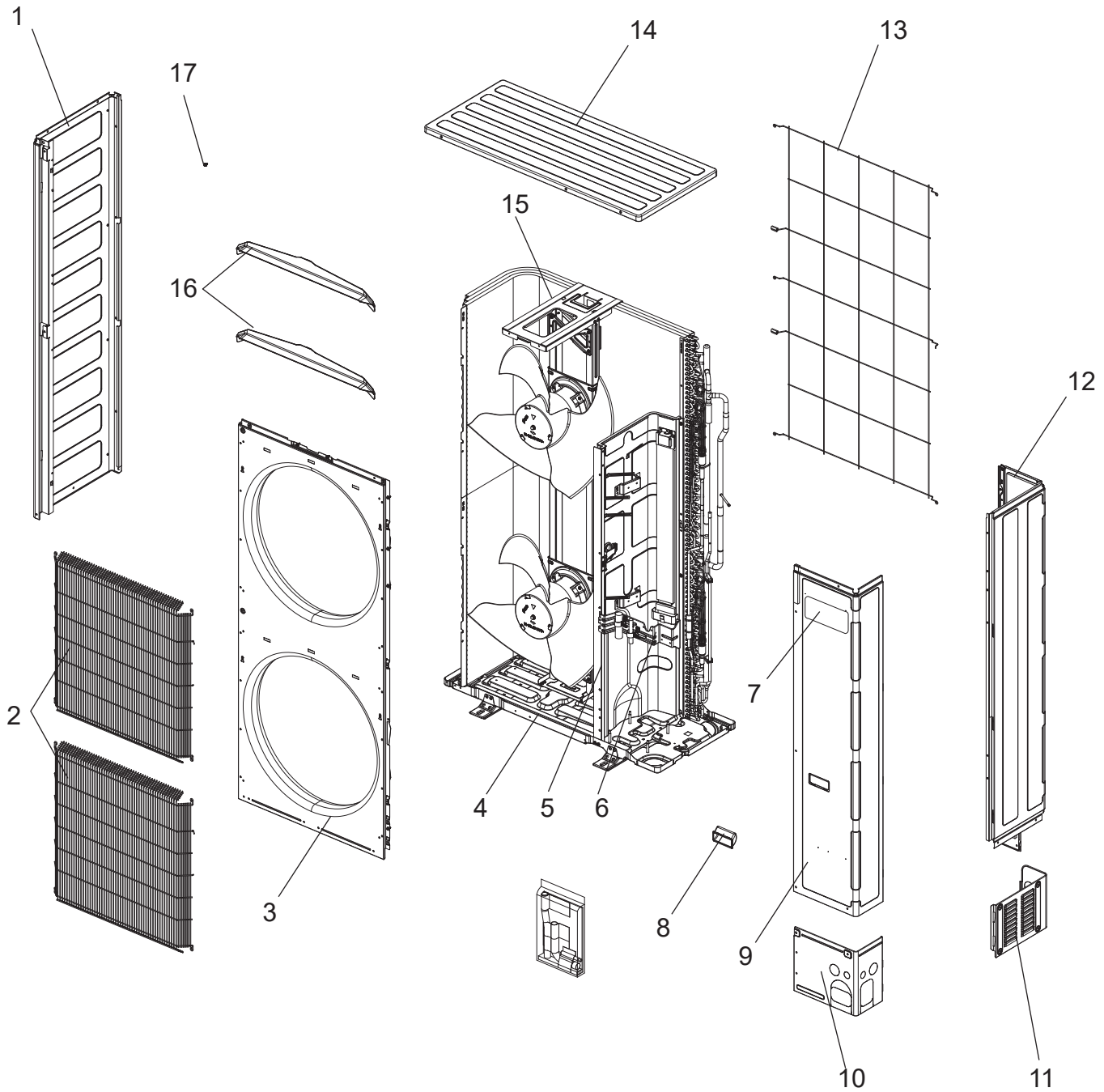
1. SERVICE PARTS LIST .....	2
-----------------------------	---

**SERVICE MANUAL (TCH091)**

**1-1. OUTDOOR UNIT STRUCTURAL PARTS**

PUMY-P250YBM2.TH  
 PUMY-P250YBM2-ER.TH  
 PUMY-P250YBM2-ET.TH  
 PUMY-P250YBM2-BS.TH  
 PUMY-P250YBM2-ER-BS.TH  
 PUMY-P250YBM2-ET-BS.TH

PUMY-P300YBM2.TH  
 PUMY-P300YBM2-ER.TH  
 PUMY-P300YBM2-ET.TH  
 PUMY-P300YBM2-BS.TH  
 PUMY-P300YBM2-ER-BS.TH  
 PUMY-P300YBM2-ET-BS.TH

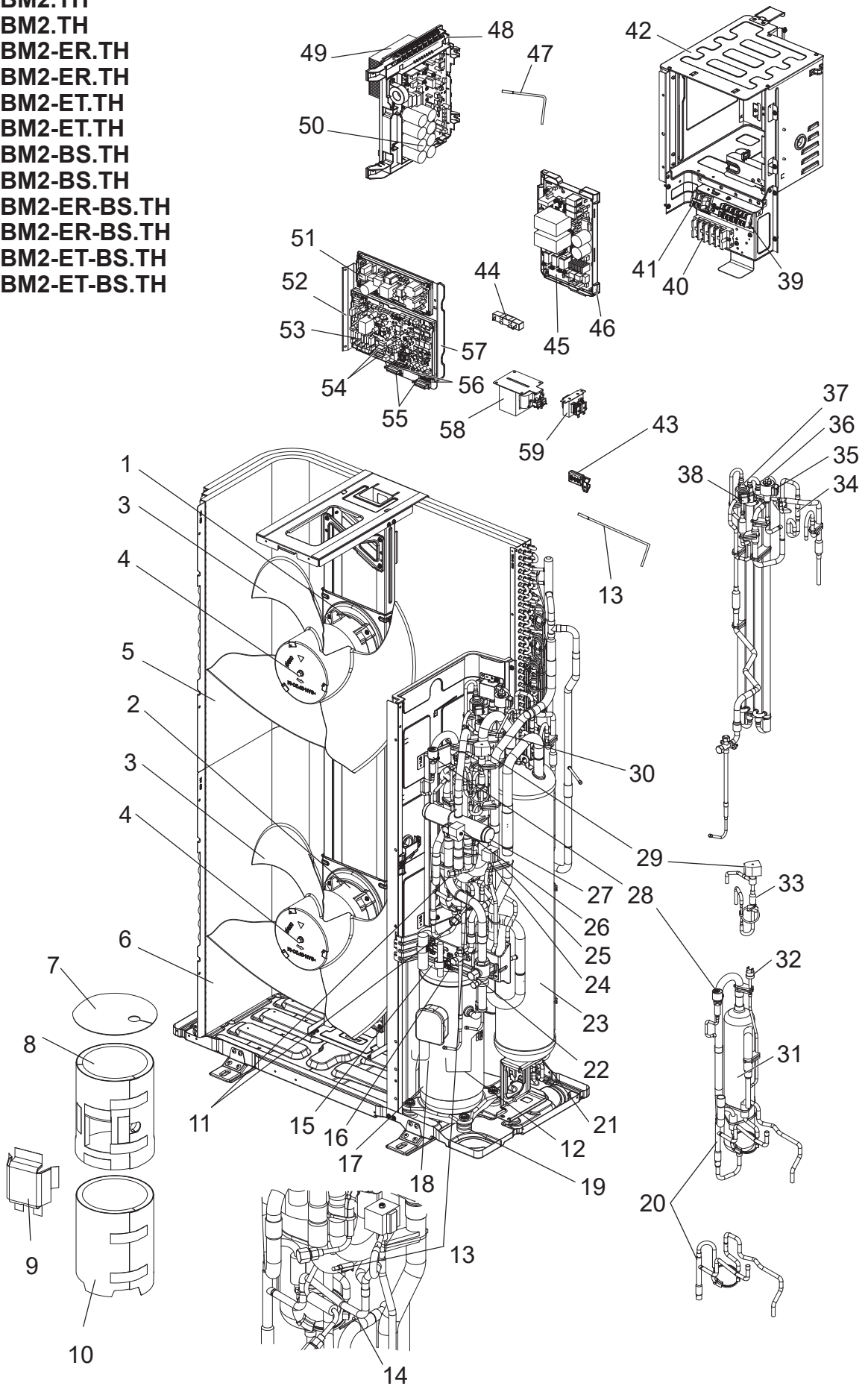


1. The part quantity below indicates the required number of pieces per unit.

No.	Parts No.	Parts Name													Remarks [Drawing No.]
			PUMY-P250YBM2.TH	PUMY-P250YBM2-ER.TH	PUMY-P250YBM2-ET.TH	PUMY-P250YBM2-BS.TH	PUMY-P250YBM2-ER-BS.TH	PUMY-P250YBM2-ET-BS.TH	PUMY-P300YBM2.TH	PUMY-P300YBM2-ER.TH	PUMY-P300YBM2-ET.TH	PUMY-P300YBM2-BS.TH	PUMY-P300YBM2-ER-BS.TH	PUMY-P300YBM2-ET-BS.TH	
1	E 27 41E 086	SIDE PANEL (L)	1	1	1	1	1	1	1	1	1	1	1	1	
2	E 27 41E 521	WIRE GRILLE	2	2	2	2	2	2	2	2	2	2	2	2	
3	E 27 41E 232	FRONT PANEL	1	1	1	1	1	1	1	1	1	1	1	1	
4	E 27 37E 290	BASE	1	1	1	1	1	1	1	1	1	1	1	1	
5	E 27 41E 293	SEPARATOR	1	1	1	1	1	1	1	1	1	1	1	1	
6	—	VALVE BED	1	1	1	1	1	1	1	1	1	1	1	1	[RK00J349G03]
7	—	BRAND LABEL	1	1	1	1	1	1	1	1	1	1	1	1	[BT79G823H01]
8	E 22 819 009	HANDLE	1	1	1	1	1	1	1	1	1	1	1	1	
9	E 27 41E 245	SERVICE PANEL	1	1	1	1	1	1	1	1	1	1	1	1	
10	E 27 41E 006	COVER PANEL (FRONT)	1	1	1	1	1	1	1	1	1	1	1	1	
11	E 27 42E 006	COVER PANEL (REAR)	1	1	1	1	1	1	1	1	1	1	1	1	
12	E 27 41E 085	SIDE PANEL (R)	1	1	1	1	1	1	1	1	1	1	1	1	
13	E 27 W53 523	REAR GUARD	1	1	1	1	1	1	1	1	1	1	1	1	
14	E 27 41E 297	TOP PANEL	1	1	1	1	1	1	1	1	1	1	1	1	
15	E 27 59N 515	MOTOR SUPPORT	1	1	1	1	1	1	1	1	1	1	1	1	
16	E 27 W53 531	ICE GUARD	2	2	2	2	2	2	2	2	2	2	2	2	
17	E 27 942 250	F.ST SCREW	88	88	88	88	88	88	88	88	88	88	88	88	

## 1-2. OUTDOOR UNIT FUNCTIONAL AND ELECTRICAL PARTS

PUMY-P250YBM2.TH  
 PUMY-P300YBM2.TH  
 PUMY-P250YBM2-ER.TH  
 PUMY-P300YBM2-ER.TH  
 PUMY-P250YBM2-ET.TH  
 PUMY-P300YBM2-ET.TH  
 PUMY-P250YBM2-BS.TH  
 PUMY-P300YBM2-BS.TH  
 PUMY-P250YBM2-ER-BS.TH  
 PUMY-P300YBM2-ER-BS.TH  
 PUMY-P250YBM2-ET-BS.TH  
 PUMY-P300YBM2-ET-BS.TH



1. The part quantity below indicates the required number of pieces per unit.

No.	Parts No.	Parts Name													Wiring Diagram Symbol	Remarks [Drawing No.]
			PJMY-P250YBM2.TH	PJMY-P250YBM2-ER.TH	PJMY-P250YBM2-ET.TH	PJMY-P250YBM2-BS.TH	PJMY-P250YBM2-ER-BS.TH	PJMY-P250YBM2-ET-BS.TH	PJMY-P300YBM2.TH	PJMY-P300YBM2-ER.TH	PJMY-P300YBM2-ET.TH	PJMY-P300YBM2-BS.TH	PJMY-P300YBM2-ER-BS.TH	PJMY-P300YBM2-ET-BS.TH		
1	E27 W53 301	OUTDOOR FAN MOTOR	1	1	1	1	1	1	1	1	1	1	1	1	MF1	WH, upper side
2	E27 W54 301	OUTDOOR FAN MOTOR	1	1	1	1	1	1	1	1	1	1	1	1	MF2	BU, bottom side
3	E27 W53 501	PROPELLER FAN	2	2	2	2	2	2	2	2	2	2	2	2		
4	E27 W53 508	PROPELLER FAN NUT	2	2	2	2	2	2	2	2	2	2	2	2		
5	E27 36A 630	OUTDOOR HEAT EXCHANGER (TOP)	1	1	1	1	1	1	1	1	1	1	1	1		
6	E27 37A 630	OUTDOOR HEAT EXCHANGER (UNDER)	1	1	1	1	1	1	1	1	1	1	1	1		
7	—	COMP FELT (TOP)	1	1	1	1	1	1	1	1	1	1	1	1		[RK33R570H01]
8	—	COMP FELT (BODY-UPPER)	1	1	1	1	1	1	1	1	1	1	1	1		[RK33J771H02]
9	—	COMP FELT (TERMINAL)	1	1	1	1	1	1	1	1	1	1	1	1		[RK33J599H02]
10	—	COMP FELT (BODY-BOTTOM )	1	1	1	1	1	1	1	1	1	1	1	1		[RK33J772H01]
11	E27 942 641	CHARGE PLUG	2	2	2	2	2	2	2	2	2	2	2	2		
12	E27 35F 381	COMPRESSOR PROTECTOR	1	1	1	1	1	1	1	1	1	1	1	1	TRS	
13	E27 W53 307	THERMISTOR W	1	1	1	1	1	1	1	1	1	1	1	1	TH6, TH7	
14	E27 W50 307	THERMISTOR	1	1	1	1	1	1	1	1	1	1	1	1	TH2	
15	E27 W52 307	THERMISTOR SHELL	1	1	1	1	1	1	1	1	1	1	1	1	TH4	
16	E27 981 662	STOP VALVE 3/8F	1	1	1	1	1	1	1	1	1	1	1	1		For liquid
17	E27 27F 900	COMPRESSOR ANB78FSFMT	1	1	1	1	1	1	1	1	1	1	1	1	MC	
18	—	LEAD ASSY COMP	1	1	1	1	1	1	1	1	1	1	1	1		[RG78F280G04]
19	E22 267 506	COMPRESSOR RUBBER SET	4	4	4	4	4	4	4	4	4	4	4	4		4PCS/ SET
20	E27 W53 936	CAPILLARY TUBE ASSY	1	1	1	1	1	1	1	1	1	1	1	1		CT (ø2.4 x ø0.8 x 600) brazed assy
21	E27 W51 307	THERMISTOR	1	1	1	1	1	1	1	1	1	1	1	1	TH3	
22	E27 W53 661	BALL VALVE 7/8F	1	1	1	1	1	1	1	1	1	1	1	1		For gas
23	E27 37E 932	ACCUMULATOR	1	1	1	1	1	1	1	1	1	1	1	1		
24	E27 W54 492	SOLENOID VALVE	1	1	1	1	1	1	1	1	1	1	1	1	(SV3)	
25	E27 W54 490	SOLENOID COIL	1	1	1	1	1	1	1	1	1	1	1	1	SV3	BK
26	E27 37E 490	SOLENOID COIL	1	1	1	1	1	1	1	1	1	1	1	1	21S4	GN
27	E27 35E 961	4-WAY VALVE	1	1	1	1	1	1	1	1	1	1	1	1	(21S4)	
28	E27 M17 646	HIGH PRESSURE SENSOR	1	1	1	1	1	1	1	1	1	1	1	1	63HS	
29	E27 W53 490	SOLENOID COIL	1	1	1	1	1	1	1	1	1	1	1	1	SV1	GY
30	E27 W53 647	LOW PRESSURE SENSOR	1	1	1	1	1	1	1	1	1	1	1	1	63LS	
31	E27 W53 299	OIL SEPARATOR	1	1	1	1	1	1	1	1	1	1	1	1		
32	E27 942 646	HIGH PRESSURE SWITCH	1	1	1	1	1	1	1	1	1	1	1	1	63H	
33	E27 W53 492	SOLENOID VALVE	1	1	1	1	1	1	1	1	1	1	1	1	(SV1)	SV1&CT(ø4.0 x ø3.0 x 220) brazed assy
34	E27 W53 642	RESTRICTOR VALVE	1	1	1	1	1	1	1	1	1	1	1	1		
35	E27 W53 493	LINEAR EXPANSION VALVE COIL	1	1	1	1	1	1	1	1	1	1	1	1	LEV-A	WH
36	E27 W53 640	EXPANSION VALVE	1	1	1	1	1	1	1	1	1	1	1	1	(LEV-A)	
37	E22 02J 640	EXPANSION VALVE	1	1	1	1	1	1	1	1	1	1	1	1	(LEV-B)	
38	E27 W54 493	LINEAR EXPANSION VALVE COIL	1	1	1	1	1	1	1	1	1	1	1	1	LEV-B	RD
39	E27 W54 374	TERMINAL BLOCK	2	2	2	2	2	2	2	2	2	2	2	2	TB3, TB7	
40	E27 W52 374	TERMINAL BLOCK	1	1	1	1	1	1	1	1	1	1	1	1	TB1	
41	E27 W53 374	TERMINAL BLOCK	1	1	1	1	1	1	1	1	1	1	1	1	TB1B	
42	—	ELECTRICAL PARTS BOX	1	1	1	1	1	1	1	1	1	1	1	1		[RK00J657G08]
43	E27 W53 079	SENSOR HOLDER	1	1	1	1	1	1	1	1	1	1	1	1		For TH7 (Ambient)
44	E27 W53 360	RESISTOR	1	1	1	1	1	1	1	1	1	1	1	1	RS	
45	E27 W53 444	NOISE FILTER P.C.BOARD	1	1	1	1	1	1	1	1	1	1	1	1	N.F.	
46	—	BOARD CASE NF	1	1	1	1	1	1	1	1	1	1	1	1		[RK25A634G04]
47	E27 W54 307	THERMISTOR HS	1	1	1	1	1	1	1	1	1	1	1	1	TH8	
48	—	BOARD CASE POWER	1	1	1	1	1	1	1	1	1	1	1	1		[RK00N133G01]
49	—	HEAT SINK	1	1	1	1	1	1	1	1	1	1	1	1		[RK11B721H02]
50	E27 35F 440	POWER BOARD	1	1	1	1	1	1	1	1	1	1	1	1	P.B.	
51	E27 35F 456	M-NET POWER CIRCUIT BOARD	1	1	1	1	1	1	1	1	1	1	1	1	M-NET P.B.	
52	—	BOARD CASE M-NET	1	1	1	1	1	1	1	1	1	1	1	1		[RK25J178G04]
53	E27 39N 450	OUTDOOR CONTROL P.C. BOARD	1	1	1	1	1	1	1	1	1	1	1	1	MULTI B.	
54	E27 648 382	FUSE 250V 6.3A	2	2	2	2	2	2	2	2	2	2	2	2	F1, F2	T6.3AL250V
55	E22 735 382	FUSE	2	2	2	2	2	2	2	2	2	2	2	2	FUSE1, FUSE2	
56	E22 735 241	FUSE HOLDER	2	2	2	2	2	2	2	2	2	2	2	2		
57	—	BOARD CASE CONT	1	1	1	1	1	1	1	1	1	1	1	1		[RK25A635G03]
58	E27 W53 337	REACTOR	1	1	1	1	1	1	1	1	1	1	1	1	DCL	
59	E27 W54 337	REACTOR	1	1	1	1	1	1	1	1	1	1	1	1	DCL2	

# **mitsubishi electric corporation**

HEAD OFFICE: TOKYO BUILDING, 2-7-3, MARUNOUCHI, CHIYODA-KU, TOKYO100-8310, JAPAN

**MITSUBISHI ELECTRIC CONSUMER PRODUCTS (THAILAND) CO., LTD.**  
**700/406 MOO 7, TAMBON DON HUA ROH,**  
**AMPHUR MUANG, CHONBURI 20000 THAILAND**  
**Published: Sep. 2022. No. TCB091**  
**Made in Thailand**

Specifications are subject to change without notice.