

OUTDOOR UNIT

PARTS CATALOG



No. OBB931

Models

MUZ-AY25VG - E1, ET1, ER1

MUZ-AY35VG - E1, ET1, ER1

MUZ-AY42VG - E1, ET1, ER1

MUZ-AY50VG - E1, ET1, ER1

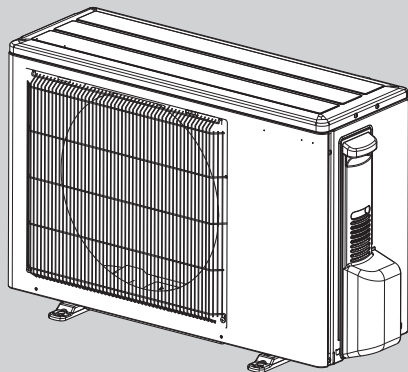
MUZ-AY25VGH - SC1

MUZ-AY35VGH - SC1

MUZ-AY42VGH - SC1

MUZ-AY50VGH - SC1

MUZ-AY25VG MUZ-AY25VGH
MUZ-AY35VG MUZ-AY35VGH
MUZ-AY42VG MUZ-AY42VGH



CONTENTS

1. SERVICE PARTS LIST 2

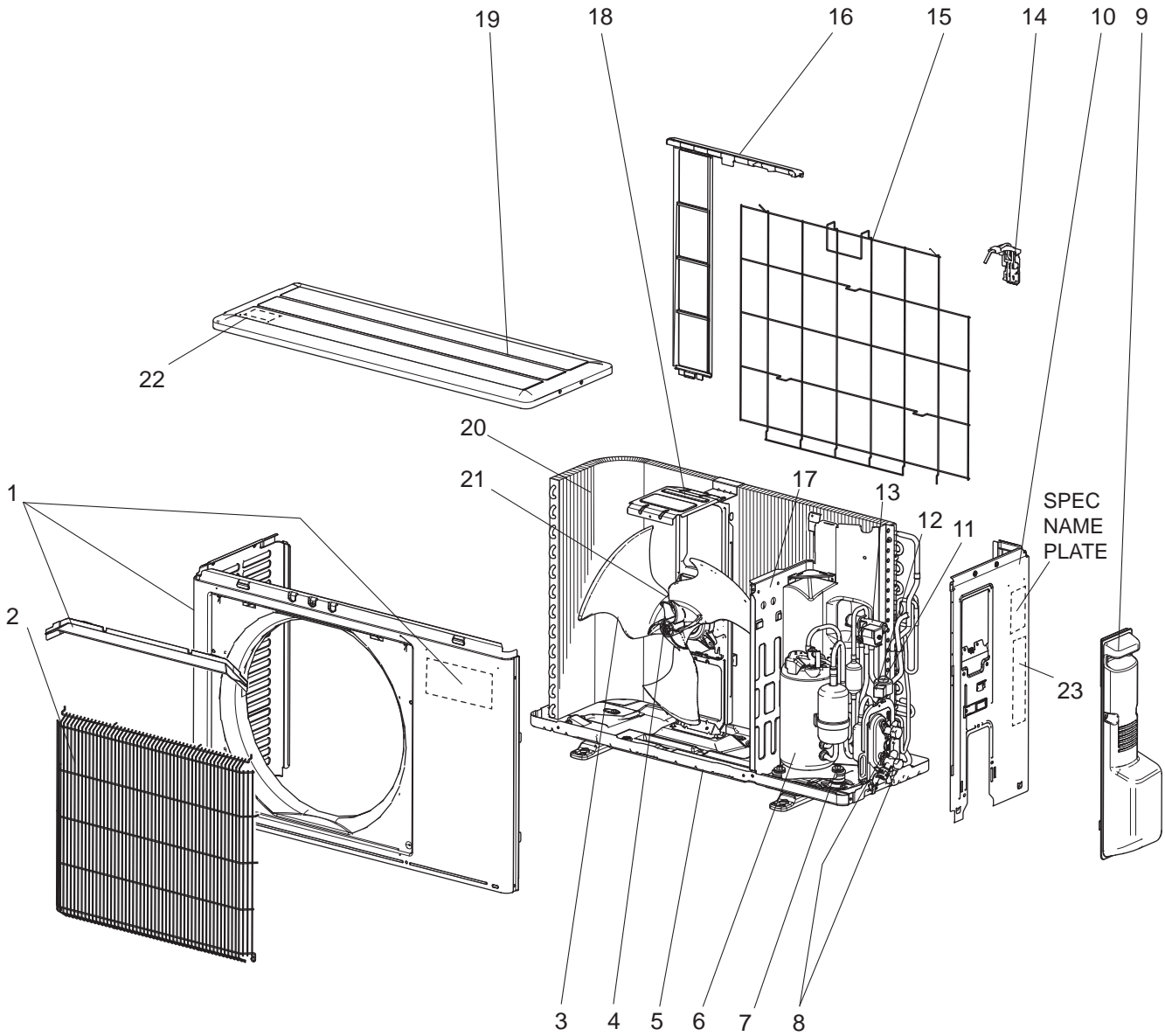
SERVICE MANUAL (OBH931)

1

SERVICE PARTS LIST

MUZ-AY25VG - [E1], [ET1], [ER1] MUZ-AY35VG - [E1], [ET1], [ER1]

1-1. OUTDOOR UNIT STRUCTURAL PARTS AND FUNCTIONAL PARTS



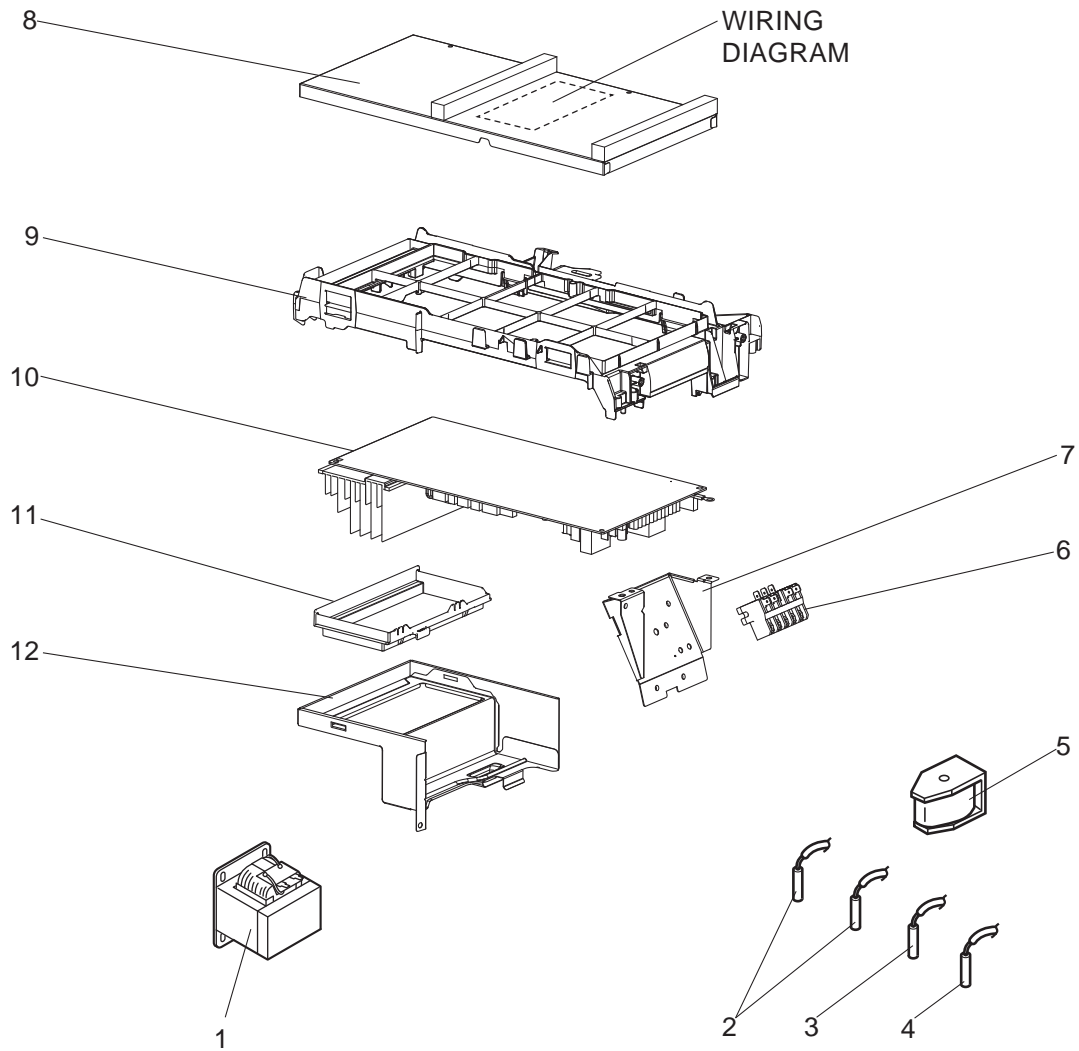
1-1. OUTDOOR UNIT STRUCTURAL PARTS AND FUNCTIONAL PARTS

1. The part quantity below indicates the required number of pieces per unit.

2. The circled No. indicates that the part is not shown in the figure.

No.	Part No.	Part Name	MUZ-AY25VG - [E1]	MUZ-AY25VG - [ET]	MUZ-AY25VG - [ER]	MUZ-AY35VG - [E1]	MUZ-AY35VG - [ET]	MUZ-AY35VG - [ER]	Symbol in Wiring Diagram	Remarks [Drawing No.]
1	G2W 004 050	CABINET ASSEMBLY	1	1	1	1	1	1		Includes ice guard, trade mark
2	G2W 001 063	WIRE GRILLE	1	1	1	1	1	1		
3	G2W 001 550	PROPELLER FAN	1	1	1	1	1	1		
4	G2W 001 753	PROPELLER FAN NUT	1	1	1	1	1	1		
5	G2W 001 055	BASE ASSEMBLY	1	1	1	1	1	1		
6	G2W 008 650	COMPRESSOR	1	1	1	1	1	1	MC	KVB073FYTMC
7	G2W 001 773	COMPRESSOR RUBBER SET	3	3	3	3	3	3		3 RUBBERS/SET
8	G2W 001 655	STOP VALVE ASSEMBLY	1	1	1	1	1	1		Gas: ø9.52 Liquid: ø6.35 Includes pipes
9	G2W 001 053	SERVICE PANEL ASSEMBLY	1	1	1	1	1	1		
10	G2W 003 060	BACK PANEL ASSEMBLY	1	1	1	1	1	1		Not including SPEC NAME PLATE or No. 23
11	G2W 006 668	EXPANSION VALVE ASSEMBLY	1	1	1	1	1	1		Includes capillary tube (2PCS: ø4.0xø2.4x240, ø3.0xø1.8x100)
12	G2W 004 362	EXPANSION VALVE COIL	1	1	1	1	1	1	LEV	
13	G2W 002 665	4-WAY VALVE	1	1	1	1	1	1		
14	—	THERMO HOLDER (AMBIENT)	1	1	1	1	1	1		[DK25A972G03]
15	G2W 001 067	CONDENSER WIRE NET ASSEMBLY	1	1	1	1	1	1		
16	G2W 002 065	CONDENSER NET	1	1	1	1	1	1		
17	G2W 001 150	SEPARATOR	1	1	1	1	1	1		
18	G2W 001 154	MOTOR SUPPORT	1	1	1	1	1	1		
19	G2W 001 057	TOP PANEL ASSEMBLY	1	1	1	1	1	1		Not including No. 22
20	G2W 007 660	OUTDOOR HEAT EXCHANGER	1	1	1					
20	G2W 008 660	OUTDOOR HEAT EXCHANGER				1	1	1		
21	G2W 003 350	OUTDOOR FAN MOTOR	1	1	1	1	1	1	MF	RC0J37-□□
22	—	LABEL	1	1	1	1	1	1		[JG79R840H02]
23	—	LABEL	1		1	1		1		[DG79T575H01]
23	—	LABEL		1				1		[DG79T575H02]
②④	G2W 005 371	COMPRESSOR LEAD WIRE ASSEMBLY	1	1	1	1	1	1		
②⑤	G2W 001 765	DRAIN SOCKET	1	1	1	1	1	1		

MUZ-AY25VG - [E1], [ET1], [ER1] MUZ-AY35VG - [E1], [ET1], [ER1]
1-2. OUTDOOR UNIT ELECTRICAL PARTS



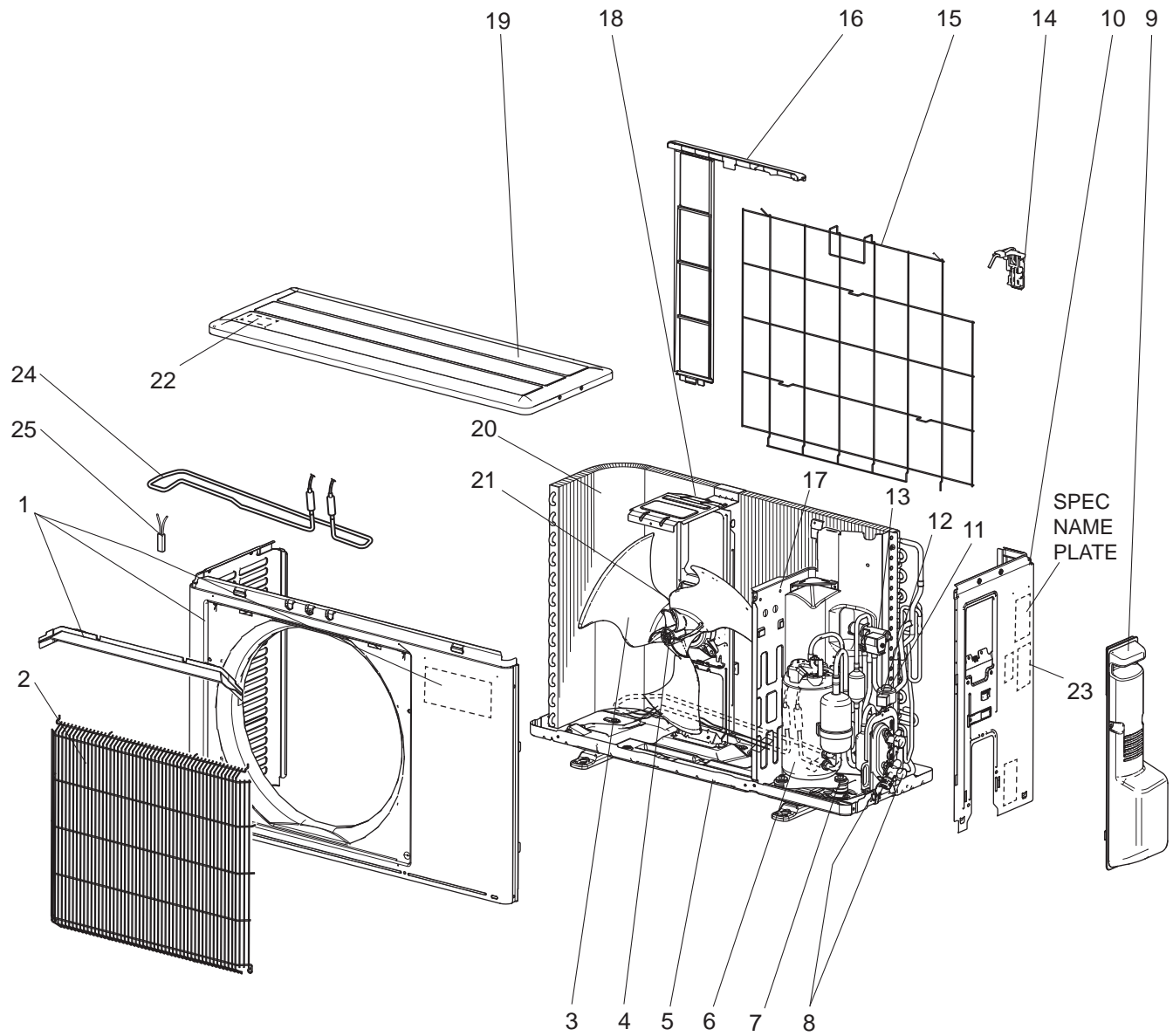
1-2. OUTDOOR UNIT ELECTRICAL PARTS

1. The part quantity below indicates the required number of pieces per unit.

No.	Part No.	Part Name							Symbol in Wiring Diagram	Remarks [Drawing No.]
			MUZ-AY25VG - [E1]	MUZ-AY25VG - [ET]	MUZ-AY25VG - [ER]	MUZ-AY35VG - [E1]	MUZ-AY35VG - [ET]	MUZ-AY35VG - [ER]		
1	G2W 001 359	REACTOR	1	1	1				L61	
1	G2W 002 359	REACTOR				1	1	1	L61	
2	G2W 001 353	THERMISTOR SET	1	1	1	1	1	1	RT61, RT62	DEFROST, DISCHARGE
3	G2W 001 355	AMBIENT TEMPERATURE THERMISTOR	1	1	1	1	1	1	RT65	
4	G2W 001 357	OUTDOOR HEAT EXCHANGER TEMPERATURE THERMISTOR	1	1	1	1	1	1	RT68	
5	G2W 002 365	R.V. COIL	1	1	1	1	1	1	21S4	
6	G2W 002 373	TERMINAL BLOCK	1	1	1	1	1	1	TB1	5P (S1, S2, S3, L, N)
7	—	TB SUPPORT	1	1	1	1	1	1		[DY00B879G05]
8	—	P.C. BOARD COVER	1	1	1	1	1	1		[DY02B869G01], [SQ33C889H05] (2 PCS)
9	—	P.C. BOARD SUPPORT	1	1	1	1	1	1		[DY25A804G03]
10	G2W 030 460	INVERTER P.C. BOARD ASSEMBLY	1	1	1					Includes heat sink and RT64
10	G2W 031 460	INVERTER P.C. BOARD ASSEMBLY				1	1	1		Includes heat sink and RT64
11	—	HS HOLDER ASSEMBLY	1	1	1	1	1	1		[DY00C493G05]
12	—	HS SUPPRORT ASSEMBLY	1	1	1	1	1	1		[DY00B872G04]

MUZ-AY25VGH - [SC1] MUZ-AY35VGH - [SC1]

1-3. OUTDOOR UNIT STRUCTURAL PARTS AND FUNCTIONAL PARTS

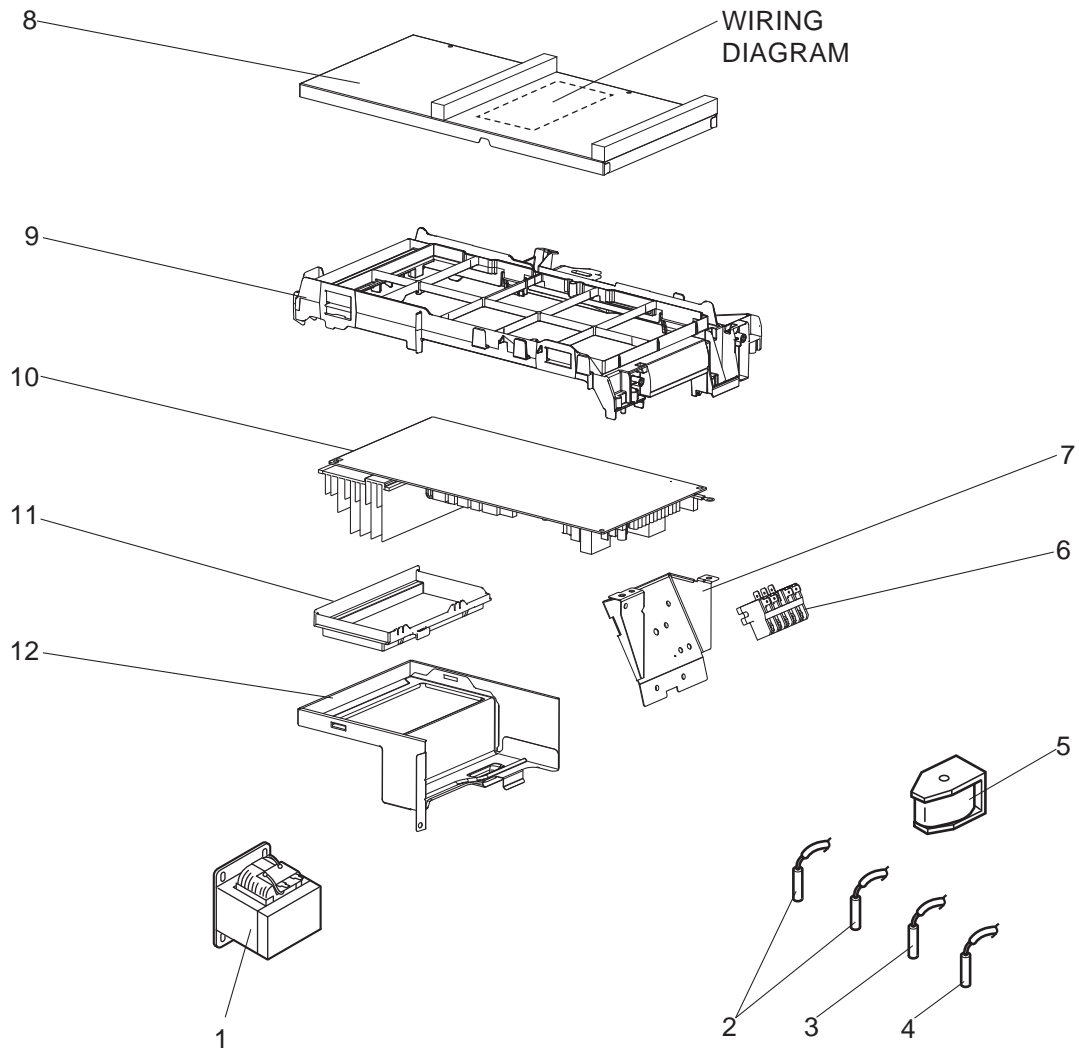


1-3. OUTDOOR UNIT STRUCTURAL PARTS AND FUNCTIONAL PARTS

1. The part quantity below indicates the required number of pieces per unit.
2. The circled No. indicates that the part is not shown in the figure.

No.	Part No.	Part Name	MUZ-AY25VGH - [SCI]	MUZ-AY35VGH - [SCI]	Symbol in Wiring Diagram	Remarks [Drawing No.]
1	G2W 004 050	CABINET ASSEMBLY	1	1		Includes ice guard, trade mark
2	G2W 001 063	WIRE GRILLE	1	1		
3	G2W 001 550	PROPELLER FAN	1	1		
4	G2W 001 753	PROPELLER FAN NUT	1	1		
5	G2W 002 055	BASE ASSEMBLY	1	1		
6	G2W 008 650	COMPRESSOR	1	1	MC	KVB073FYTMC
7	G2W 001 773	COMPRESSOR RUBBER SET	3	3		3 RUBBERS/SET
8	G2W 001 655	STOP VALVE ASSEMBLY	1	1		Gas: $\varnothing 9.52$ Liquid: $\varnothing 6.35$ Includes pipes
9	G2W 001 053	SERVICE PANEL ASSEMBLY	1	1		
10	G2W 003 060	BACK PANEL ASSEMBLY	1	1		Not including SPEC NAME PLATE or No. 23
11	G2W 006 668	EXPANSION VALVE ASSEMBLY	1	1		Includes capillary tube (2PCS: $\varnothing 4.0 \times \varnothing 2.4 \times 240$, $\varnothing 3.0 \times \varnothing 1.8 \times 100$)
12	G2W 004 362	EXPANSION VALVE COIL	1	1	LEV	
13	G2W 002 665	4-WAY VALVE	1	1		
14	—	THERMO HOLDER (AMBIENT)	1	1		[DK25A972G03]
15	G2W 001 067	CONDENSER WIRE NET ASSEMBLY	1	1		
16	G2W 002 065	CONDENSER NET	1	1		
17	G2W 002 150	SEPARATOR	1	1		
18	G2W 001 154	MOTOR SUPPORT	1	1		
19	G2W 001 057	TOP PANEL ASSEMBLY	1	1		Not including No. 22
20	G2W 007 660	OUTDOOR HEAT EXCHANGER	1			
20	G2W 008 660	OUTDOOR HEAT EXCHANGER		1		
21	G2W 003 350	OUTDOOR FAN MOTOR	1	1	MF	RC0J37-□□
22	—	LABEL	1	1		[JG79R840H02]
23	—	LABEL	1	1		[DG79T575H01]
24	G2W 002 368	DEFROST HEATER	1	1	H	
25	G2W 001 377	HEATER PROTECTOR ASSEMBLY	1	1	26H	
26	G2W 005 371	COMPRESSOR LEAD WIRE ASSEMBLY	1	1		
27	—	TRS HOLDER	1	1		[SQ25J934G03]
28	—	HEATER SUPPORT	1	1		[SQ02D016G01]
29	—	HEATER SUPPORT	1	1		[SQ02C462G01]

MUZ-AY25VGH - [SC1] MUZ-AY35VGH - [SC1]
1-4. OUTDOOR UNIT ELECTRICAL PARTS



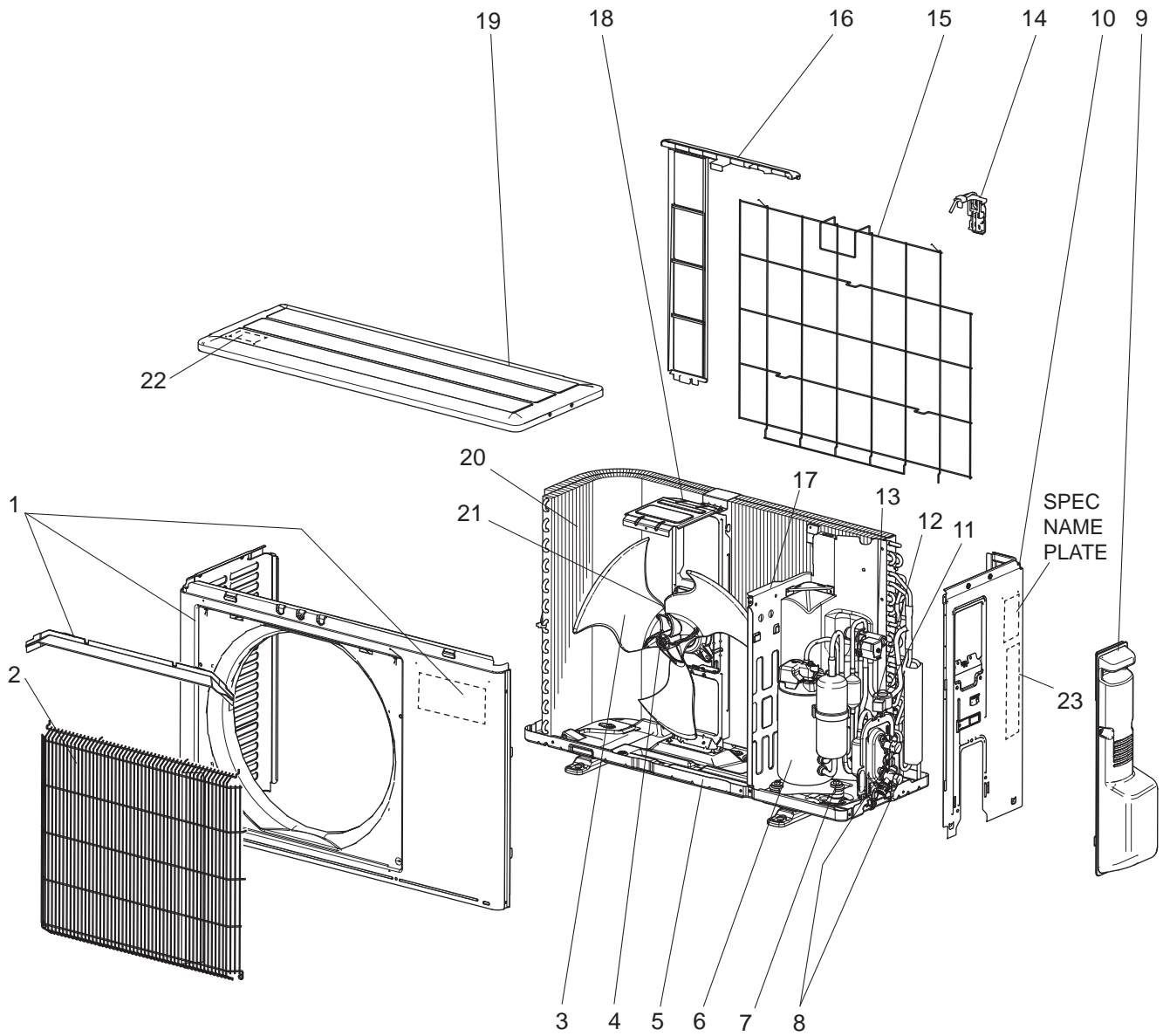
1-4. OUTDOOR UNIT ELECTRICAL PARTS

1. The part quantity below indicates the required number of pieces per unit.

No.	Part No.	Part Name	MUZ-AY25VGH - [SC1]	MUZ-AY35VGH - [SC1]	Symbol in Wiring Diagram	Remarks [Drawing No.]
1	G2W 001 359	REACTOR	1		L61	
1	G2W 002 359	REACTOR		1	L61	
2	G2W 001 353	THERMISTOR SET	1	1	RT61, RT62	DEFROST, DISCHARGE
3	G2W 001 355	AMBIENT TEMPERATURE THERMISTOR	1	1	RT65	
4	G2W 001 357	OUTDOOR HEAT EXCHANGER TEMPERATURE THERMISTOR	1	1	RT68	
5	G2W 002 365	R.V. COIL	1	1	21S4	
6	G2W 002 373	TERMINAL BLOCK	1	1	TB1	5P (S1, S2, S3, L, N)
7	—	TB SUPPORT	1	1		[DY00B879G05]
8	—	P.C. BOARD COVER	1	1		[DY02B869G01], [SQ33C889H05] (2 PCS)
9	—	P.C. BOARD SUPPORT	1	1		[DY25A804G03]
10	G2W 033 460	INVERTER P.C. BOARD ASSEMBLY	1			Includes heat sink and RT64
10	G2W 034 460	INVERTER P.C. BOARD ASSEMBLY		1		Includes heat sink and RT64
11	—	HS HOLDER ASSEMBLY	1	1		[DY00C493G05]
12	—	HS SUPPRORT ASSEMBLY	1	1		[DY00B872G04]

MUZ-AY42VG - E1, ET1, ER1

1-5. OUTDOOR UNIT STRUCTURAL PARTS AND FUNCTIONAL PARTS



1-5. OUTDOOR UNIT STRUCTURAL PARTS AND FUNCTIONAL PARTS

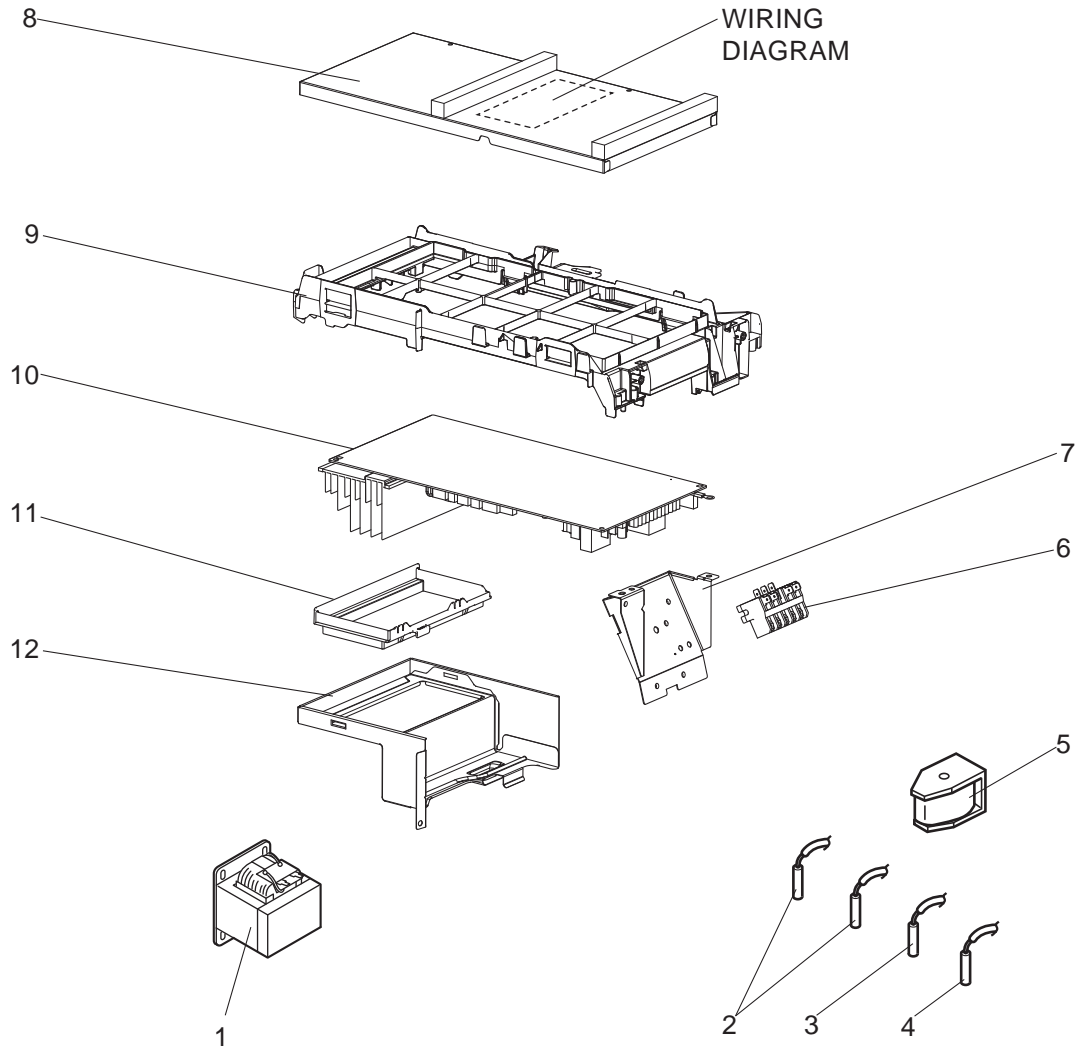
1. The part quantity below indicates the required number of pieces per unit.

2. The circled No. indicates that the part is not shown in the figure.

No.	Part No.	Part Name	MUZ-AY42VG - [LE1]	MUZ-AY42VG - [ET1]	MUZ-AY42VG - [ERT]	Symbol in Wiring Diagram	Remarks [Drawing No.]
1	G2W 004 050	CABINET ASSEMBLY	1	1	1		Includes ice guard, trade mark
2	G2W 001 063	WIRE GRILLE	1	1	1		
3	G2W 001 550	PROPELLER FAN	1	1	1		
4	G2W 001 753	PROPELLER FAN NUT	1	1	1		
5	G2W 001 055	BASE ASSEMBLY	1	1	1		
6	G2W 010 650	COMPRESSOR	1	1	1	MC	SVB130FBBMC
7	G2W 002 773	COMPRESSOR RUBBER SET	3	3	3		3 RUBBERS/SET
8	G2W 001 655	STOP VALVE ASSEMBLY	1	1	1		Gas: ø9.52 Liquid: ø6.35 Includes pipes
9	G2W 001 053	SERVICE PANEL ASSEMBLY	1	1	1		
10	G2W 003 060	BACK PANEL ASSEMBLY	1	1	1		Not including SPEC NAME PLATE or No. 23
11	G2W 007 668	EXPANSION VALVE ASSEMBLY	1	1	1		Includes capillary tube ø4.0xø2.4x240
12	G2W 004 362	EXPANSION VALVE COIL	1	1	1	LEV	
13	G2W 002 665	4-WAY VALVE	1	1	1		
14	—	THERMO HOLDER (AMBIENT)	1	1	1		[DK25A972G04]
15	G2W 002 067	CONDENSER WIRE NET ASSEMBLY	1	1	1		
16	G2W 001 065	CONDENSER NET	1	1	1		
17	G2W 003 150	SEPARATOR	1	1	1		
18	G2W 002 154	MOTOR SUPPORT	1	1	1		
19	G2W 001 057	TOP PANEL ASSEMBLY	1	1	1		Not including No. 22
20	G2W 006 660	OUTDOOR HEAT EXCHANGER	1	1	1		Includes No. 25
21	G2W 003 350	OUTDOOR FAN MOTOR	1	1	1	MF	RC0J37-□□
22	—	LABEL	1	1	1		[JG79R840H02]
23	—	LABEL	1	1	1		[DG79T575H01]
23	—	LABEL		1			[DG79T575H02]
②④	G2W 002 371	COMPRESSOR LEAD WIRE ASSEMBLY	1	1	1		
②⑤	G2W 001 672	CAPILLARY TUBE PIPE ASSEMBLY	1	1	1		Includes capillary tube ø3.0xø1.8x600 (x2)
②⑥	G2W 001 765	DRAIN SOCKET	1	1	1		

MUZ-AY42VG - E1, ET1, ER1

1-6. OUTDOOR UNIT ELECTRICAL PARTS



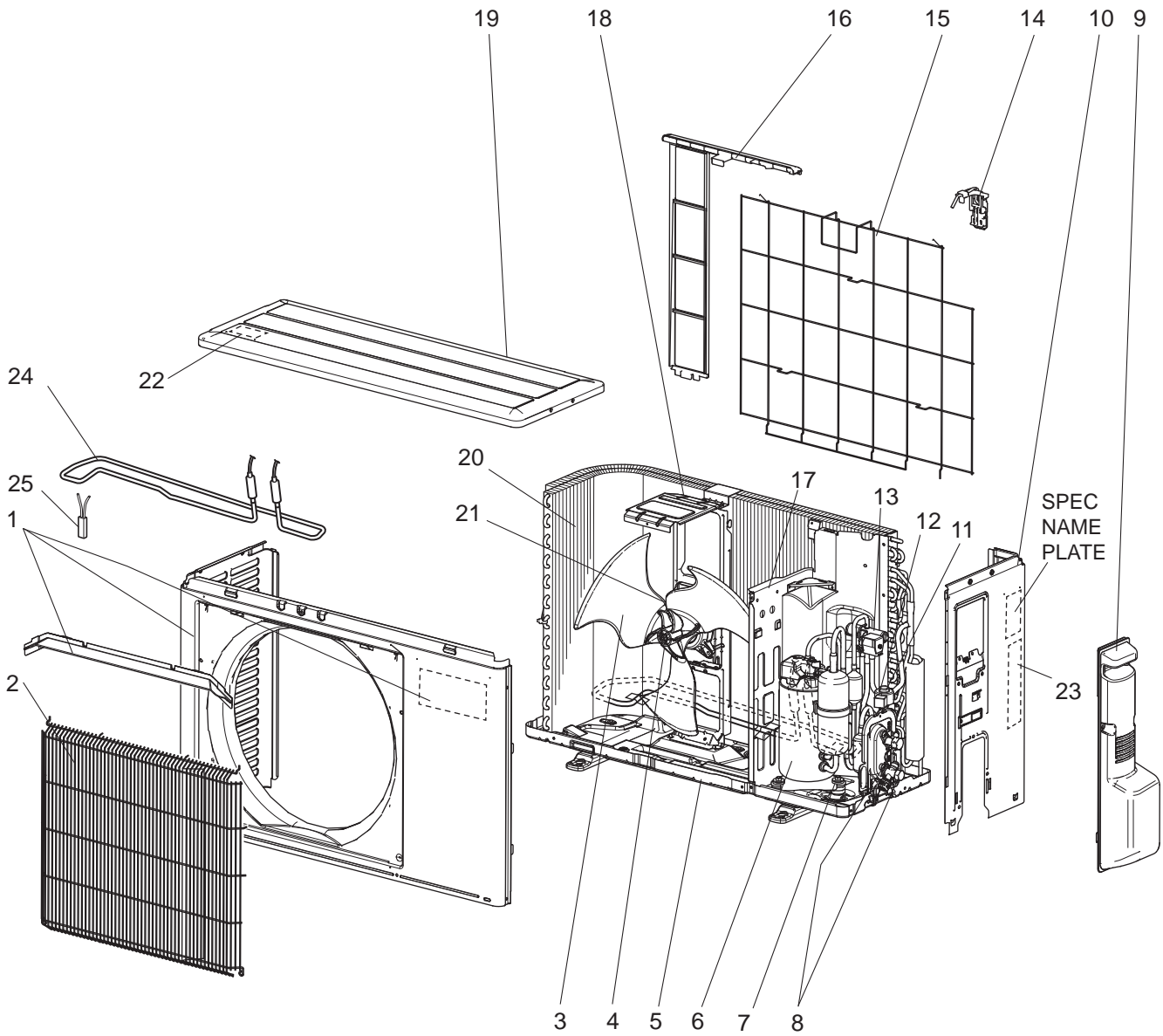
1-6. OUTDOOR UNIT ELECTRICAL PARTS

1. The part quantity below indicates the required number of pieces per unit.

No.	Part No.	Part Name	MUZ-AY42VG - [E1]	MUZ-AY42VG - [ET1]	MUZ-AY42VG - [ER1]	Symbol in Wiring Diagram	Remarks [Drawing No.]
1	G2W 002 359	REACTOR	1	1	1	L61	
2	G2W 001 353	THERMISTOR SET	1	1	1	RT61, RT62	DEFROST, DISCHARGE
3	G2W 001 355	AMBIENT TEMPERATURE THERMISTOR	1	1	1	RT65	
4	G2W 001 357	OUTDOOR HEAT EXCHANGER TEMPERATURE THERMISTOR	1	1	1	RT68	
5	G2W 002 365	R.V. COIL	1	1	1	21S4	
6	G2W 002 373	TERMINAL BLOCK	1	1	1	TB1	5P (S1, S2, S3, L, N)
7	—	TB SUPPORT	1	1	1		[DY00B879G05]
8	—	P.C. BOARD COVER	1	1	1		[DY02B869G01], [SQ33C889H05] (2 PCS)
9	—	P.C. BOARD SUPPORT	1	1	1		[DY25A804G03]
10	G2W 032 460	INVERTER P.C. BOARD ASSEMBLY	1	1	1		Includes heat sink and RT64
11	—	HS HOLDER ASSEMBLY	1	1	1		[DY00C493G05]
12	—	HS SUPPRORT ASSEMBLY	1	1	1		[DY00B872G04]

MUZ-AY42VGH - [SC1]

1-7. OUTDOOR UNIT STRUCTURAL PARTS AND FUNCTIONAL PARTS



1-7. OUTDOOR UNIT STRUCTURAL PARTS AND FUNCTIONAL PARTS

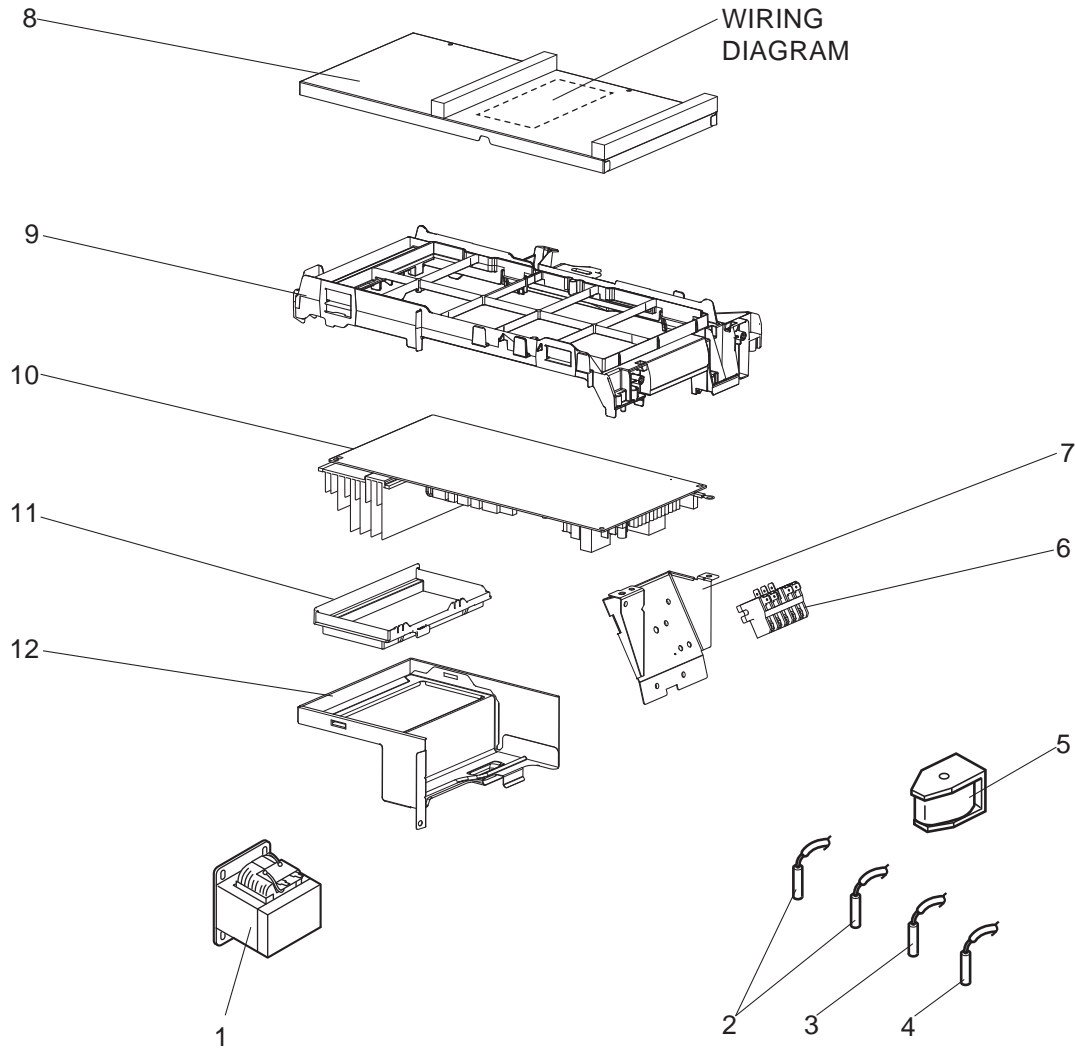
1. The part quantity below indicates the required number of pieces per unit.

2. The circled No. indicates that the part is not shown in the figure.

No.	Part No.	Part Name	MUZ-AY42VGH - [SC1]	Symbol in Wiring Diagram	Remarks [Drawing No.]
1	G2W 004 050	CABINET ASSEMBLY	1		Includes ice guard, trade mark
2	G2W 001 063	WIRE GRILLE	1		
3	G2W 001 550	PROPELLER FAN	1		
4	G2W 001 753	PROPELLER FAN NUT	1		
5	G2W 002 055	BASE ASSEMBLY	1		
6	G2W 010 650	COMPRESSOR	1	MC	SVB130FBBMC
7	G2W 002 773	COMPRESSOR RUBBER SET	3		3 RUBBERS/SET
8	G2W 001 655	STOP VALVE ASSEMBLY	1		Gas: ø9.52 Liquid: ø6.35 Includes pipes
9	G2W 001 053	SERVICE PANEL ASSEMBLY	1		
10	G2W 003 060	BACK PANEL ASSEMBLY	1		Not including SPEC NAME PLATE or No. 23
11	G2W 007 668	EXPANSION VALVE ASSEMBLY	1		Includes capillary tube ø4.0xø2.4x240
12	G2W 004 362	EXPANSION VALVE COIL	1	LEV	
13	G2W 002 665	4-WAY VALVE	1		
14	—	THERMO HOLDER (AMBIENT)	1		[DK25A972G04]
15	G2W 002 067	CONDENSER WIRE NET ASSEMBLY	1		
16	G2W 001 065	CONDENSER NET	1		
17	G2W 004 150	SEPARATOR	1		
18	G2W 002 154	MOTOR SUPPORT	1		
19	G2W 001 057	TOP PANEL ASSEMBLY	1		Not including No. 22
20	G2W 006 660	OUTDOOR HEAT EXCHANGER	1		Includes No. 27
21	G2W 003 350	OUTDOOR FAN MOTOR	1	MF	RC0J37-□□
22	—	LABEL	1		[JG79R840H02]
23	—	LABEL	1		[DG79T575H01]
24	G2W 002 368	DEFROST HEATER	1	H	
25	G2W 001 377	HEATER PROTECTOR ASSEMBLY	1	26H	
②⑥	G2W 002 371	COMPRESSOR LEAD WIRE ASSEMBLY	1		
②⑦	G2W 001 672	CAPILLARY TUBE PIPE ASSEMBLY	1		Includes capillary tube ø3.0xø1.8x600 (x2)
②⑧	—	TRS HOLDER	1		[SQ25J934G03]
②⑨	—	HEATER SUPPORT	1		[SQ02D016G01]
③⑩	—	HEATER SUPPORT	1		[SQ02C462G01]

MUZ-AY42VGH - [SC1]

1-8. OUTDOOR UNIT ELECTRICAL PARTS



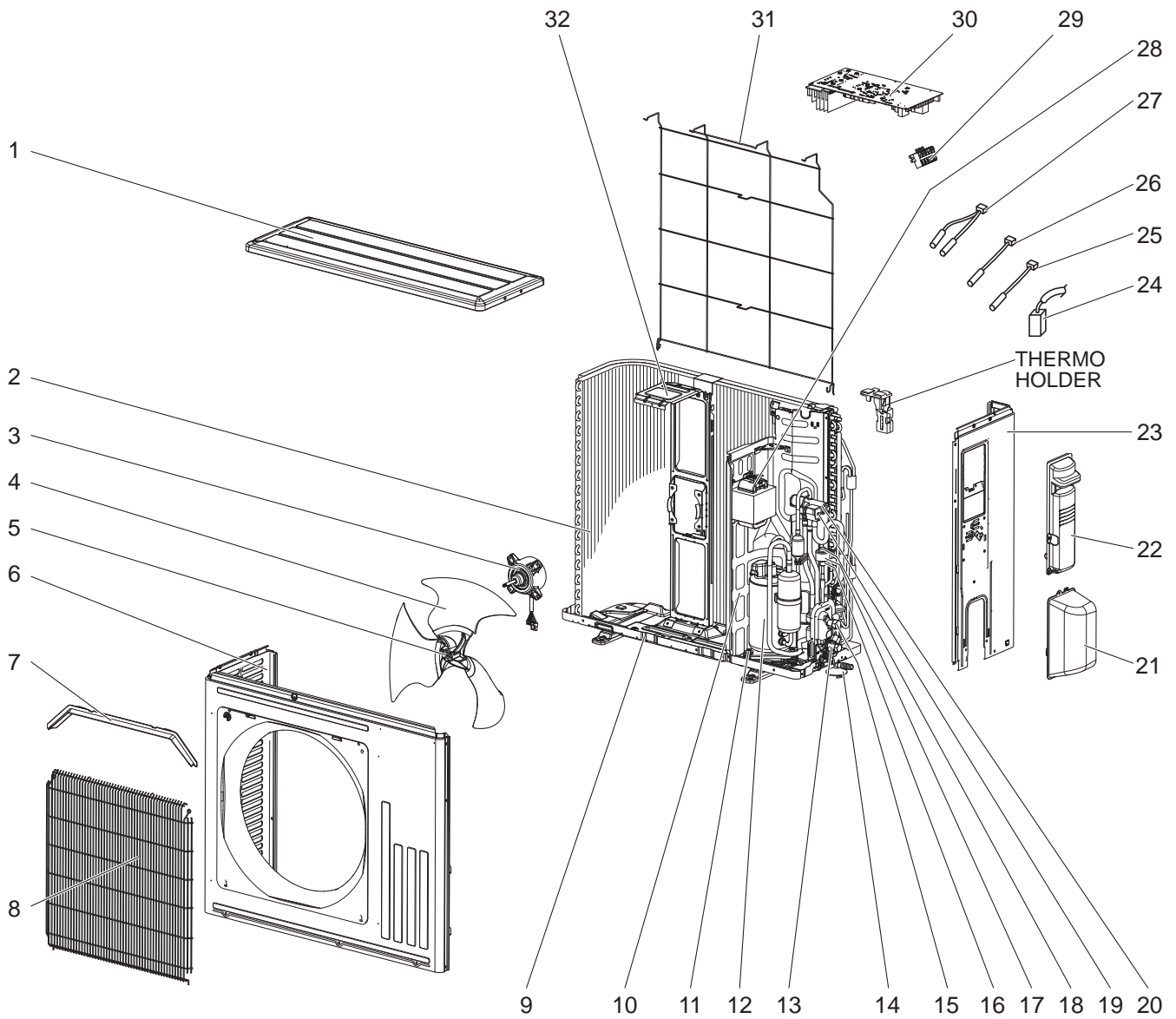
1-8. OUTDOOR UNIT ELECTRICAL PARTS

1. The part quantity below indicates the required number of pieces per unit.

No.	Part No.	Part Name	MUZ-AY42VGH - [SC1]	Symbol in Wiring Diagram	Remarks [Drawing No.]
1	G2W 002 359	REACTOR	1	L61	
2	G2W 001 353	THERMISTOR SET	1	RT61, RT62	DEFROST, DISCHARGE
3	G2W 001 355	AMBIENT TEMPERATURE THERMISTOR	1	RT65	
4	G2W 001 357	OUTDOOR HEAT EXCHANGER TEMPERATURE THERMISTOR	1	RT68	
5	G2W 002 365	R.V. COIL	1	21S4	
6	G2W 002 373	TERMINAL BLOCK	1	TB1	5P (S1, S2, S3, L, N)
7	—	TB SUPPORT	1		[DY00B879G05]
8	—	P.C. BOARD COVER	1		[DY02B869G01], [SQ33C889H05] (2 PCS)
9	—	P.C. BOARD SUPPORT	1		[DY25A804G03]
10	G2W 035 460	INVERTER P.C. BOARD ASSEMBLY	1		Includes heat sink and RT64
11	—	HS HOLDER ASSEMBLY	1		[DY00C493G05]
12	—	HS SUPPRORT ASSEMBLY	1		[DY00B872G04]

MUZ-AY50VG - [E1], [ET1], [ER1]

1-9. OUTDOOR UNIT STRUCTURAL PARTS, ELECTRICAL PARTS AND FUNCTIONAL PARTS



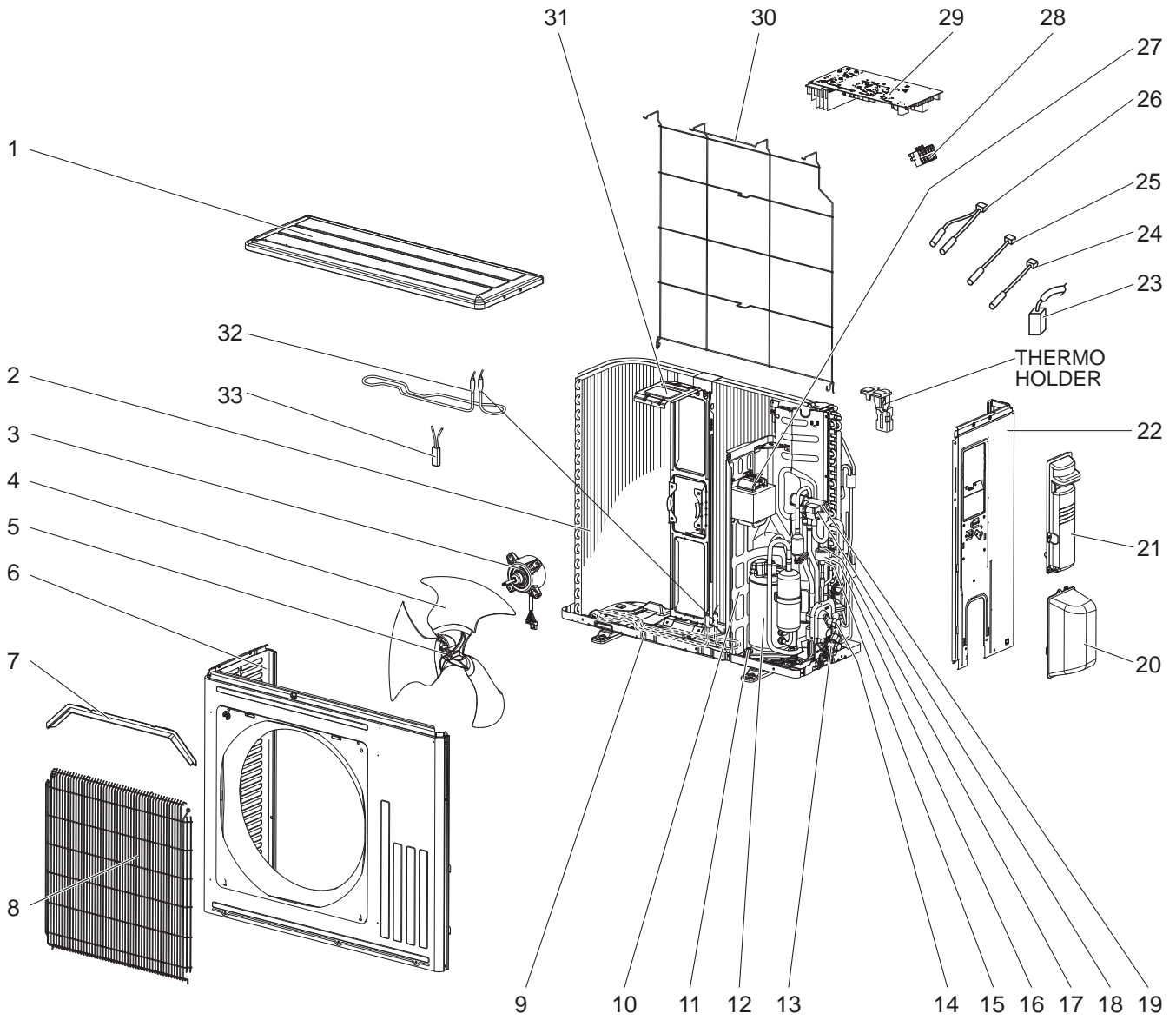
1-9. OUTDOOR UNIT STRUCTURAL PARTS, ELECTRICAL PARTS AND FUNCTIONAL PARTS

1. The part quantity below indicates the required number of pieces per unit.
2. The circled No. indicates that the part is not shown in the figure.

No.	Part No.	Part Name	MUZ-AY50VG - ^{ET}	MUZ-AY50VG - ^{ET1}	MUZ-AY50VG - ^{ET1}	Symbol in Wiring Diagram	Remarks
1	E22 Y86 297	TOP PANEL	1	1	1		
2	E22 Y86 630	OUTDOOR HEAT EXCHANGER	1	1	1		
3	E22 Y86 301	OUTDOOR FAN MOTOR	1	1	1	MF	RC0J50-□□
4	E22 Y86 501	PROPELLER FAN	1	1	1		
5	E27 L05 508	PROPELLER FAN NUT	1	1	1		
6	E22 41G 232	CABINET	1	1	1		
7	E22 Y86 531	ICE GUARD	1	1	1		
8	E22 Y86 521	GRILLE (OUT)	1	1	1		
9	E22 44P 290	BASE	1	1	1		
10	E22 Y86 293	SEPARATOR	1	1	1		
11	E22 C34 506	COMPRESSOR RUBBER SET	3	3	3		3 RUBBERS/SET
12	E22 R83 900	COMPRESSOR	1	1	1	MC	SVB130FBBMT
13	E22 75R 661	STOP VALVE (GAS)	1	1	1		ø9.52
14	E22 838 704	DRAIN SOCKET	1	1	1		
15	E22 75R 662	STOP VALVE (LIQUID)	1	1	1		ø6.35
16	E22 11L 640	EXPANSION VALVE	1	1	1		LEV body
17	E22 29K 493	EXPANSION VALVE COIL	1	1	1	LEV	
18	E22 75R 645	EXPANSION VALVE ASSY	1	1	1		Includes LEV body, capillary tube
19	E22 75R 490	R.V. COIL	1	1	1	21S4	
20	E22 75R 961	4-WAY VALVE	1	1	1		
21	E22 Y86 650	VALVE COVER	1	1	1		
22	E22 Y86 245	SERVICE PANEL	1	1	1		
23	E22 Y86 233	BACK PANEL (OUT)	1	1	1		
24	E22 41X 381	COMPRESSOR PROTECTOR	1	1	1	26C	
25	E22 Y86 309	AMBIENT TEMPERATURE THERMISTOR	1	1	1	RT65	Cased sensor in holder
26	E22 C34 307	OUTDOOR HEAT EXCHANGER TEMPERATURE THERMISTOR	1	1	1	RT68	
27	E22 Y86 306	THERMISTOR SET	1	1	1	RT61, RT62	DEFROST, DISCHARGE
28	E22 N94 337	REACTOR	1	1	1	L61	
29	E22 13L 374	TERMINAL BLOCK	1	1	1	TB1	5 P
30	E22 32X 451	INVERTER P.C. BOARD	1	1	1		Includes heat sink and RT64
31	E22 Y86 525	CONDENSER WIRE NET	1	1	1		
32	E22 Y86 515	MOTOR SUPPORT	1	1	1		
33	E22 P72 936	CAPILLARY TUBE	1	1	1		ø4.0 x ø2.4 x 240

MUZ-AY50VGH - [SC1]

1-10. OUTDOOR UNIT STRUCTURAL PARTS, ELECTRICAL PARTS AND FUNCTIONAL PARTS



1-10. OUTDOOR UNIT STRUCTURAL PARTS, ELECTRICAL PARTS AND FUNCTIONAL PARTS

1. The part quantity below indicates the required number of pieces per unit.
2. The circled No. indicates that the part is not shown in the figure.

No.	Part No.	Part Name	MUZ-AY50VGH - [SC1]	Symbol in Wiring Diagram	Remarks
1	E22 Y86 297	TOP PANEL	1		
2	E22 Y86 630	OUTDOOR HEAT EXCHANGER	1		
3	E22 Y86 301	OUTDOOR FAN MOTOR	1	MF	RC0J50-□□
4	E22 Y86 501	PROPELLER FAN	1		
5	E27 L05 508	PROPELLER FAN NUT	1		
6	E22 41G 232	CABINET	1		
7	E22 Y86 531	ICE GUARD	1		
8	E22 Y86 521	GRILLE (OUT)	1		
9	E22 Y96 290	BASE	1		
10	E22 42M 293	SEPARATOR	1		
11	E22 C34 506	COMPRESSOR RUBBER SET	3		3 RUBBERS/SET
12	E22 R83 900	COMPRESSOR	1	MC	SVB130FBBMT
13	E22 75R 661	STOP VALVE (GAS)	1		ø9.52
14	E22 75R 662	STOP VALVE (LIQUID)	1		ø6.35
15	E22 11L 640	EXPANSION VALVE	1		LEV body
16	E22 29K 493	EXPANSION VALVE COIL	1	LEV	
17	E22 75R 645	EXPANSION VALVE ASSY	1		Includes LEV body, capillary tube
18	E22 75R 490	R.V. COIL	1	21S4	
19	E22 75R 961	4-WAY VALVE	1		
20	E22 Y86 650	VALVE COVER	1		
21	E22 Y86 245	SERVICE PANEL	1		
22	E22 Y86 233	BACK PANEL (OUT)	1		
23	E22 41X 381	COMPRESSOR PROTECTOR	1	26C	
24	E22 Y86 309	AMBIENT TEMPERATURE THERMISTOR	1	RT65	Cased sensor in holder
25	E22 C34 307	OUTDOOR HEAT EXCHANGER TEMPERATURE THERMISTOR	1	RT68	
26	E22 Y86 306	THERMISTOR SET	1	RT61, RT62	DEFROST, DISCHARGE
27	E22 N94 337	REACTOR	1	L61	
28	E22 13L 374	TERMINAL BLOCK	1	TB1	5 P
29	E22 35X 451	INVERTER P.C. BOARD	1		Includes heat sink and RT64
30	E22 Y86 525	CONDENSER WIRE NET	1		
31	E22 Y86 515	MOTOR SUPPORT	1		
32	E22 42M 526	DEFROST HEATER	1	H	
33	E22 03B 381	HEATER PROTECTOR	1	26H	
③4	E22 P72 936	CAPILLARY TUBE	1		ø4.0 x ø2.4 x 240

mitsubishi electric corporation

HEAD OFFICE: TOKYO BUILDING, 2-7-3, MARUNOUCHI, CHIYODA-KU, TOKYO 100-8310, JAPAN

© Copyright 2022 MITSUBISHI ELECTRIC CORPORATION
Published: Nov. 2022. No. OBB931
Made in Japan

Specifications are subject to change without notice.